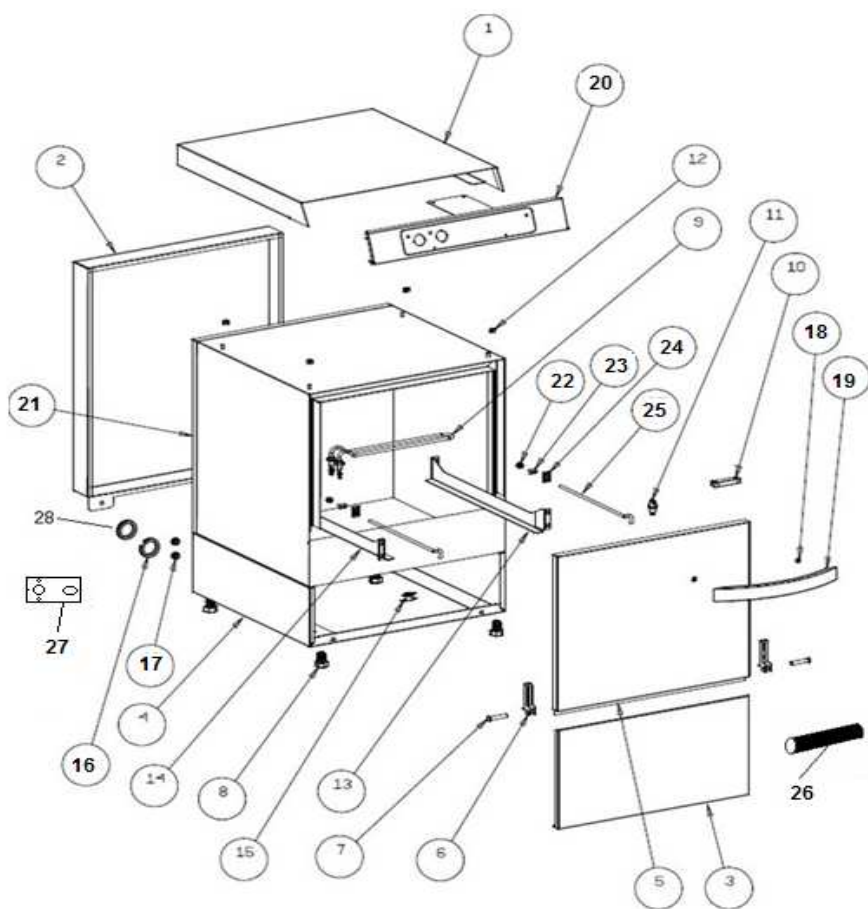


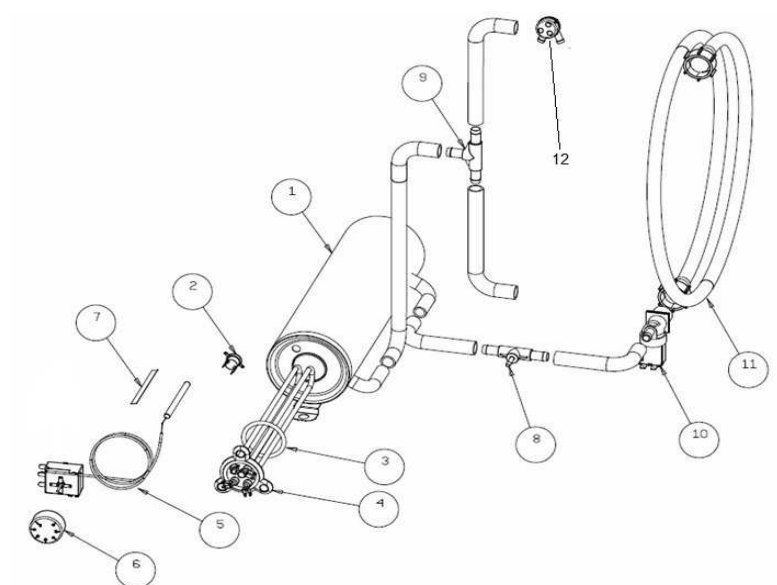
POS	CODE	DESCRIPTION	QTA
1	100206SILANOS-1	PANNELLERIA	1
2	100206SILANOS-2	RISCIACQUO	1
3	100206SILANOS-3	LAVAGGIO	1
4	100206SILANOS-4	GIRANTI	1
5	100206SILANOS-5	CABLAGGIO	1
6	100206SILANOS-6	DOSATORE	1



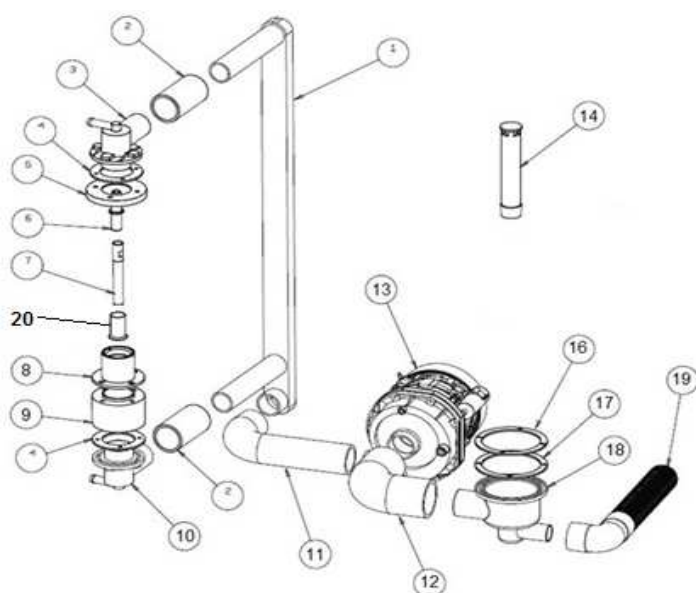
POS	CODE	DESCRIZIONE	DESCRIPTION	QTA
1	900554	PANNELLO SUPERIORE E50 ECO	UPPER PANEL E50 ECO	1
2	901802	PANNELLO POSTERIORE	BACK PANEL	1
3	904508	PANNELLO INFERIORE	LOWER PANEL	1
4	900254	BASAMENTO E50	BASEMENT E50	1
5	900013	PORTA N700-E50 STANDARD CON M.A.	STANDARD DOOR N700-E50 WITH STAINLESS-STEEL HANDLE	1
6	901245	CERNIERA PORTA SERIE S-N-E	DOOR HINGE MODEL S-N-E	2
7	904795	PERNO PORTA	DOOR PIVOT	2
8	905000	PIEDINO LAVAGGIO PVC NEW	FEET WASH PVC NEW	4
9	905745	RESIST. VASCA 2.5KW 230V	TANK ELEMENT POWER 2.5KW 230V	1
10	903651	MAGNETE + CUSTODIA FRONTALI	MAGNET + CONTAINER DISHWASHER	1
11	906121	SCROCCHETTO CON ROTELLA + DADO	LATCH WITH WHEEL + NUT	1
12	902132	GHIERA FISSAGGIO PANNELLO SUPERIORE	FERRULE UPPER PANEL FASTENING	4
13	909954	GUIDA CESTELLO DX E50/700	BASKET GUIDE RH E50/700	1
14	909955	GUIDA CESTELLO SX E50/700	BASKET GUIDE LH E50/700	1
15	907244	TERMOSTATO VASCA 55° PASTIGLIA	TANK THERMOSTAT 55° PADDLE	1
16	904721	PASSACAVO TUBO SCARICO LAVAGGIO	CABLE BUSHING DRAIN HOSE	1
17	904723	PASSACAVO TUBO BRILL./DET.	CABLE BUSHING RINSE PRODUCT/DETERGENT HOSE	1
18	906011	RONDELLA Ø5 P. PPL	WASHER Ø5 P. PPL	2
19	906217	MANIGLIA ALLUMINIO SATINATA PORTA 2016	GLAZED ALUMINUM HANDLE DOOR 2016	1
20	907900	RETROT. E 50 ECO 2016 COMPLETO	BACKPLATE E50 ECO 2016 COMPLETE	1
21	901861	VASCA E50	TANK E50	1
22	902040	DADO ATB 6	NUT ATB 6	2
23	905424	FERMO TIRANTE PORTA M6	TIE-ROD DOOR STOP M6	2
24	904952	PIASTRINA SCORR. TIRANTE PORTA	SLIDING PLATE FOR SPRINGS TIGHTENING	2
25	902740	TIRANTE PORTA M6X265	DOOR TIE-ROD M6X265	2
26	904958	PROT. RESISTENZA VASCA IN SILICONE	TANK-ELEMENT-POWER PROTECTION MADE OF SILICONE	2
27	TR2144	SQUAD. SUPPORTO REED T-N	SUPPORT BRACKET FOR REED T-N	1



POS	CODE	DESCRIZIONE	DESCRIPTION	QTA
1	900384	BOILER 600-700-N45-N50-N90 5LT.	BOILER 600-700-N45-N50-N90 5LT.	1
2	907297	TERMOSTATO SICUR. 110° PASTIGLIA	SAFETY THERMOSTAT 110° PADDLE	1
4	905569	RESIST. BOILER 3.5KW 230V +OR	BOILER ELEMENT POWER 3.5KW 230V +OR	1
5	TR0440	TERMOSTATO BOILER 0/90 LAVASTOVIGLIE	THERMOSTAT BOILER 0/90 DISHWASHER	1
6	903982	MANOPOLA TERMOSTATO 0/90°	THERMOSTAT KNOB 0/90°	1
7	904075	LAMELLA OTTONE	BRASS PLATE	1
8	905434	RACC. 3 VIE DOSATORE SU POMPA	THREE-WAY CONNECTION DOSING PUMP	1
9	905382	RACC. 3 VIE RISCIAQUO	THREE-WAY CONNECTION RINSE	1
10	902390	ELETTROV. 1 VIA Ø10	1-WAY SOLENOID VALVE Ø10	1
11	907348	TUBO CARICO 90° 1500MM S 800 HW	WATER LOAD HOSE 90° 1500MM S 800 HW	1
12	908762	VALVOLA ANTIRIFLUSSO 3/4 ESTERNA	EXTERNAL NON-RETURN VALVE 3/4	1

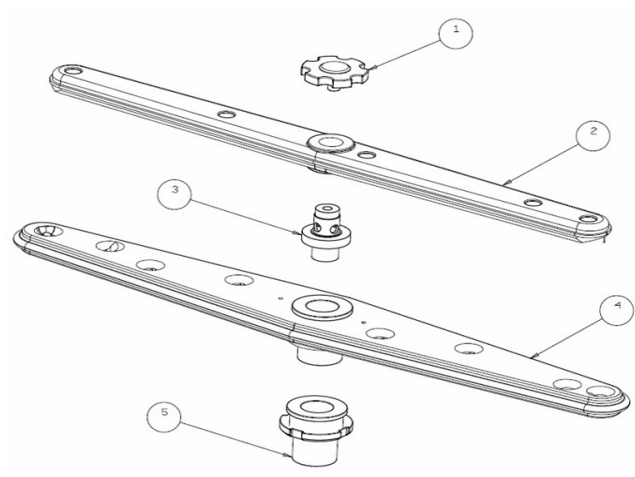


POS	CODE	DESCRIZIONE	DESCRIPTION	QTA
1	908701	COLONNA LAVAGGIO N700/E50	WASH COLUMN N700/E50	1
2	903756	TRONCHETTO MAND. N45/N50/N90/N700FH	INLET SOCKET N45/N50/N90/N700FH	2
3	905456	MOZZO LAV. DX	WASH HUB RH	1
4	908141	GUARN. RACC. LAV. N45/N50/N700/N1000	GASKET WASH JUNCTION N45/N50/N700/N1000	2
5	908154	FLANGIA NORYL MOZZO SUP. LAVAPIATTI	FLANGE UPPER HUB - DISHWASHER	1
6	904799	PERNO LAV. SUP. N600/N700/N45/N50	PIVOT UPPER WASH N600/N700/N45/N50	1
7	908705	PERNO LAV. INF. N600/N700/E45/E50	LOWER-WASH-ARM PIVOT N600/N700/E45/E50	1
8	905388	RACC. INF. LAV. E45/E50/N45/N50/N700/N1000	LOWER RINSE CONNECTION E45/E50/N45/N50/N700/N1000	1
9	908702	DISTANZIALE RACC. LAV. N700/N750	WASH CONNECTION SPACER N700/N750	1
10	905449	MOZZO LAV. SX	WASH HUB LH	1
11	909371	MANICOTTO MANDATA N750/E50/E45	INLET SLEEVE N750/E50/E45	1
12	903694	MANICOTTO ASPIRAZ. POMPA LAV. N750/E50	ASPIRATION SLEEVE WASH PUMP N750/E50	1
13	902263	POMPA 0.40KW 230/1/50 N700-N750-E45-E50	PUMP 0.40KW 230/1/50 N700-N750-E45-E50	1
14	905248	TROPPO PIENO 165MM N750/N750PS MOPLEN T	OVERFLOW CAP 165MM N750/N750PS MOPLEN T	1
15	902394	FILTRO POZZETTO N700PS/E50/E45	PIT FILTER N700PS/E50/E45	1
16	905256	FLANGIA POZZETTO ASP./SCAR.	FLANGE ASPIRATION/DRAIN SOAKAWAY	1
17	905257	GUARN. POZZETTO N650/N750/N45/N50/NE1000	PIT GASKET N650/N750/N45/N50/NE1000	1
18	905245	POZZ. ASPIRAZ. N45/N50/N90/E50/N650/N750	INCREASED SUMP N45/N50/N90/E50/N650/N750	1
19	907440	TUBO SCARICO Ø24 1500MM	DRAIN HOSE Ø24 1500MM	1
20	908456	BOCCOLA RIDUZ. PERNO LAV. N45/N700/N1000	REDUCING BUSHING OF WASH PIVOT	1

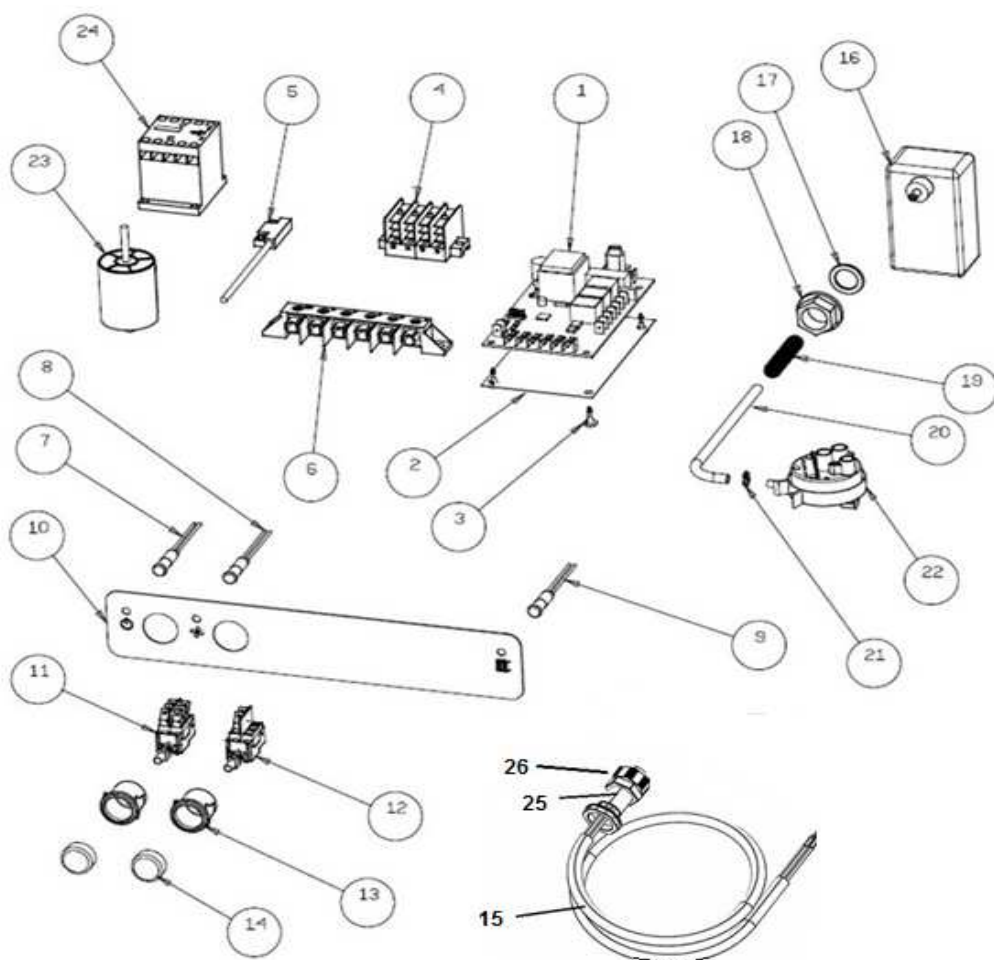


POS	CODE	DESCRIZIONE	DESCRIPTION	QTA
1	902880	GHIERA FERMO GIRANTI	FERRULE STOP ARMS	2
2	907958	GIRANTE RISCIAQUO 4 PPL	PP RINSE ARM 4	2
3	908771	PERNO GIRANTE RISC. PIATTA PPL E INOX	PIVOT FLAT RINSE ARM (POLYPROPYLENE AND STAINLESS STEEL)	2
4	902908	GIRANTE LAV. 4	WASH ARM 4	2
5	904277	MOZZO CON GHIERA GIRANTE LAV.	HUB WITH FERRULE WASH ARM	2





POS	CODE	DESCRIZIONE	DESCRIPTION	QTA
1	907169	SCHEDA TRONIC CLONE ELCA	TRONIC BOARD CLONE ELCA	1
2	903623	ISOLATORE SCHEDE 907169	BOARD INSULATOR 907169	1
3	902193	DISTANZIALE TIMER ELETTRONICO	ELECTRONIC TIMER SPACER	4
4	904167	MORSETTO QUADRIPOLORE CON SPALLA	4-POLE CLAMP WITH BRACKET	1
5	909290	REED MAGNETICO LAVASTOVIGLIE	MAGNETIC REED WAREWASHER	1
6	904150	MORSETTIERA 6 POLI N600-N700-E45-E50	TERMINAL BOX 6 POLES N600-N700-E45-E50	1
7	903688	LAMP. SPIA Ø 6 VERDE+CAVI	GREEN WARNING LIGHT Ø 6 + CABLES	1
8	903686	LAMP. SPIA Ø 6 ARANCIO+CAVI CICLO_DEP.	ORANGE WARNING LIGHT Ø 6 +CABLES	1
9	903689	LAMP. SPIA Ø 6 ARANCIO+CAVI BOILER	ORANGE WARNING LIGHT Ø 6 +BOILER CABLES	1
10	900190	TARGA SERIE ECO 2016 SILANOS VERDE	PLATE MODEL ECO 2016 SILANOS GREEN	1
11	905314	INTERRUTTORE/DEVIATORE 6 FASTON INCLIN.	SWITCH/DIVERTER 6 INCLINED FASTONS	1
12	905312	PULS. 2 FASTON INCLINATO	2-INCLINED-FASTON BUTTON	1
13	905341	SUPP. PULS. TONDO Ø25 ARG.	ROUND-BUTTON SUPPORT Ø25 SILVER	2
14	905330	TASTO TONDO Ø25 BLU LUCIDO	TASTO TONDO Ø25 GLOSSY BLUE	2
15	908192	CAVO ALIMENTAZ. 3X4X3500 H07	POWER-SOURCE CABLE 3X4X3500 H07	1
16	905262	TRAPPOLA ARIA 90MM GRIGIO CHIARO	AIR TRAP 90MM LIGHT GREY	1
17	903260	GUARN. 3/8" TR. ARIA	GASKET 3/8" AIR	1
18	902111	GHIERA 3/8" PPL	PLASTIC FERRULE 3/8"	1
19	904131	MOLLA PROTEZIONE TUBETTO	SPRING PROTECTOR TUBE	1
20	907279	TUBO SILICONE 4X7	SILICONE HOSE 4X7	0,5
21	902425	FASCETTA BIFILARE A MOLLA 7.8X8.3	TWO-WIRE SPRING CLAMP 7.8X8.3	1
22	905264	PRESSOSTATO 35/17	PRESSURE SWITCH 35/17	1
23	902108	FILTRO ANTIDISTURBO MONOFASE	ANTI NOISE FILTER MONO-PHASE	1
24	907190	TELERUTTORE 9A 230V CON ATTUATORE LOVATO	CONTACTOR 9A WITH ACTUATOR LOVATO	1
25	902683	PRESSACAVO PG16	CABLE GLAD PG16	1
26	902677	GHIERA PRESSACAVO PG16	FERRULE CABLE GLAND PG16	1



POS	CODE	DESCRIZIONE	DESCRIPTION	QTA
1	902201	DOSATORE BRILL. IDRAULICO SEKO	HYDRAULIC RINSE DOSING UNIT	1
2	906375	SUPP. DOSATORE BRILL. SEKO - GERMAC	SUPPORT FOR RINSE-PRODUCT DOSING UNIT SEKO GERMAC	1
3	907279	TUBO SILICONE	SILICONE HOSE 4X7	1
4	902046	TUBO CRYSTAL TRASP.	TRANSPARENT HOSE 4X7	1
5	906621	PESO +FILTRO POMP. DET./BRILL.	WEIGHT + FILTER RINSE PRODUCT/DETERGENT PUMP	1

