

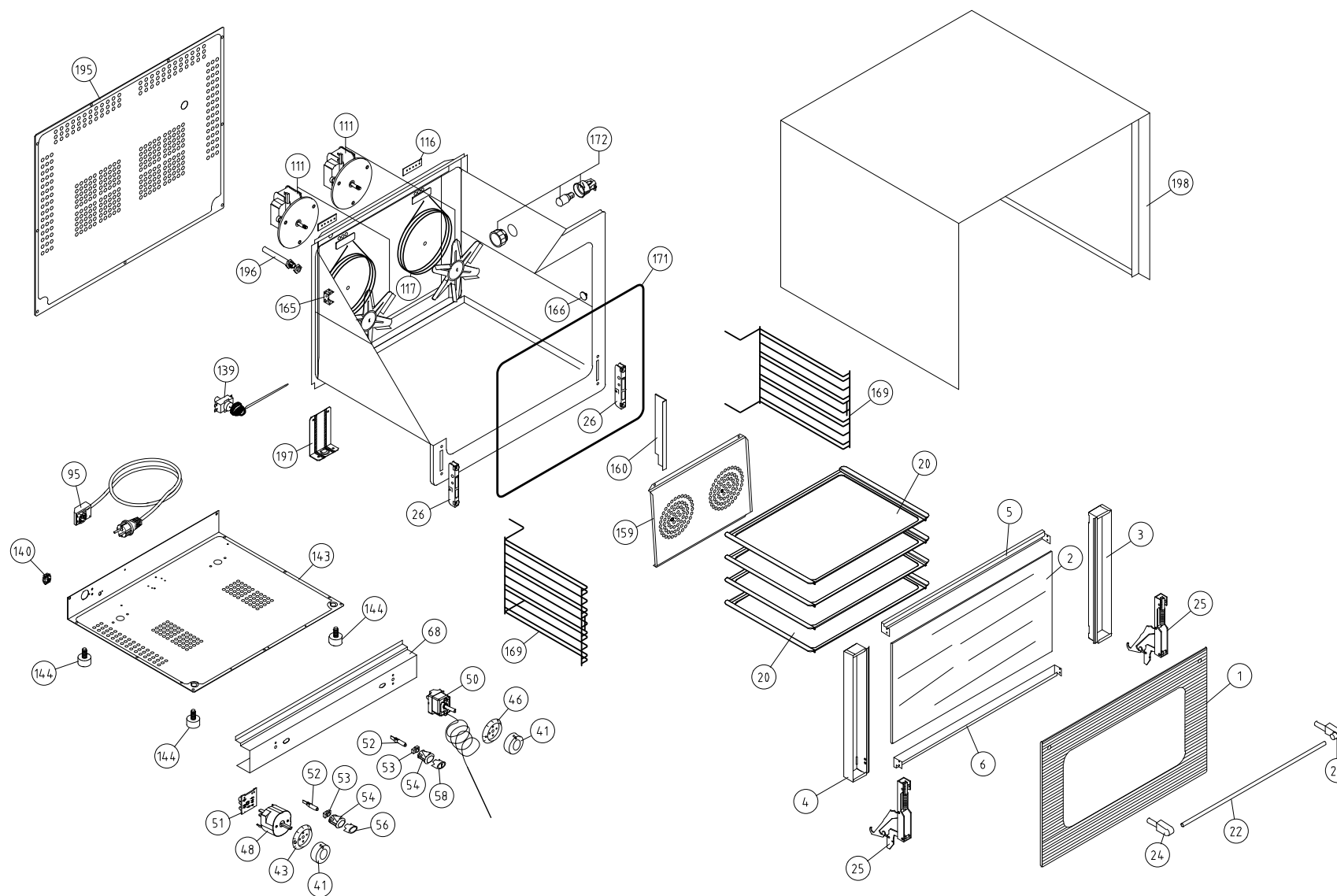
MOD: XF030-TG

EXPLODED VIEW DISEGNO ESPLOSO



LEGEND - LEGENDA

| | | | |
|----|----------|-----|----------|
| 1 | VT017A | 56 | VE165 |
| 2 | VT018A | 58 | VE164 |
| 3 | 2B113 | 68 | 2A0010 |
| 4 | 2B114 | 95 | CE116 |
| 5 | OB117 | 111 | VN050 |
| 6 | OB118 | 117 | RS090 |
| 20 | TG010 | 139 | TR254 |
| 22 | 2H038 | 140 | VM250 |
| 24 | MG119 | 143 | 2E010 |
| 25 | CR070 | 144 | PD031 |
| 26 | CR100 | 159 | OG011 |
| 41 | MN1000A0 | 160 | 6H013 |
| 43 | MN1050A0 | 165 | 0H318A |
| 46 | MN1065A0 | 166 | VI052 |
| 48 | TM023 | 169 | GR333A |
| 50 | TR006 | 171 | GN021A |
| 51 | TM012B | 172 | VE030 |
| 52 | VE177 | 195 | 6F010 |
| 53 | VE162 | 196 | 6H459 |
| 54 | VE161 | 197 | 0H1065A0 |
| | | 198 | 2D010 |



MOD: XF030-TG

EXPLODED VIEW DISEGNO ESPLOSO



DESCRIZIONE CODICI

| | | |
|----|----------|--|
| 1 | VT017A | VETRO PORTA EST.SER.578x448x4 BE TFL ARIA01 |
| 2 | VT018A | VETRO PORTA INT.491x442x4 TFG ARIA '01 |
| 3 | 2B113 | COLONNA LAT.DX PORTA ARIANNA/ROSSELLA |
| 4 | 2B114 | COLONNA LAT.SX PORTA ARIANNA/ROSSELLA |
| 5 | OB117 | LISTELLO SUP PORTA XF030 |
| 6 | OB118 | LISTELLO INFERIORE PORTA XF030 PIEGATO |
| 20 | TG010 | TEGUA PIANA ALLUMINIO ARIA 437x311 mm |
| 22 | 2H038 | MANIGL TUBO AISI304 D=15 L=519 ARIANNA SPAZZ. |
| 24 | MG119 | TERMINALE MANIGLIA F085C25APORTA FREDDA |
| 25 | CR070 | CERN DX/SX ELENA 41013300 |
| 26 | CR100 | PORTARULLINO FORI SVASATI 42008750 |
| 41 | MN1000A0 | MANOPOLA CON INDICE SERIGR. ARGENTO |
| 43 | MN1050A0 | GHIERA PER TIMER 0-120 MIN STD ARGENTO |
| 46 | MN1065A0 | GHIERA PER TERMOSTATO 80-300 °C XF006-016 ARGENTO |
| 48 | TM023 | TIMER MI2 120 min 2678 A 250V 16A |
| 50 | TR006 | TERMOSTATO 50-295 °C 55.19052.861 |
| 51 | TM012B | SUONERIA BUZZER ELETTR. 15 SEC. USA-EUR FASTON SALDATI |
| 52 | VE177 | LUCE SPIA FLUORO STD 230V |
| 53 | VE162 | SUPPORTO LAMPADA INTERNO |
| 54 | VE161 | SUPPORTO D16 ELLITTICO NERO PAST |

| | | |
|-----|----------|---|
| 56 | VE165 | GEMMA VERDE SINUSOIDE ORO |
| 58 | VE164 | GEMMA VERDE TERMOMETRO ORO |
| 68 | 2A0010 | CRUS ARNA INOX STD GREZZO |
| 95 | CE116 | CAVO 3x1,5 H07RN-F MT1,5+K1/3+SCHUK |
| 111 | VN050 | VENTIL. VR150 H40 220V 50Hz 6 PALE |
| 117 | RS090 | RES.CIRCOLARE 1260W 220-230V |
| 139 | TR254 | TERM.SIC.BIP.335 °C RIARMO MANUALE |
| 140 | VM250 | MORSETT.A.PETTINE |
| 143 | 2E010 | FONDO ARNA ZINCATO STD PIEGATO |
| 144 | PD031 | PIEDINO NERO H=20 4483.EB01 |
| 159 | OG011 | CARTER ARIA INOX ARIANNA |
| 160 | 6H013 | DIVISORIO INTERNO CARTER ARIA |
| 165 | 0H318A | SOSTEGNO BULBO STANDARD '02 |
| 166 | VI052 | NOTTOINO M5x12.5 OTT.CROM. FERMA GRIGLIE XF/XV/XG |
| 169 | GR333A | GRIGLIA LAT.SX/DX ARIANNA XF030 ANT. '01 |
| 171 | GN021A | GUARN.NERA XT55/65 8G L=1523 ARIANNA |
| 172 | VE030 | PORTALAMPADA COMPLETO ART7722212.10 |
| 195 | 6F010 | SCHIENA ARNA ZINCATA STD STAMPATA |
| 196 | 6H459 | CAMINO FUMI 16x96 Sp=1 ARIANNA '99 STAMPATO |
| 197 | 0H1065A0 | NUOVO SOSTEGNO MUFFOLA STANDARD |
| 198 | 2D010 | MANTELLO ARIANNA INOX GREZZO |

DESCRIPTION

| | | |
|----|----------|---|
| 1 | VT017A | EXT.SER.DOOR GLASS 578x448x4 BE TFL ARIA01 |
| 2 | VT018A | INT.DOOR GLASS 491x442x4 TFG ARIA '01 |
| 3 | 2B113 | DOOR RIGHT SIDE COLUMN ARIANNA/ROSSELLA |
| 4 | 2B114 | DOOR LEFT SIDE COLUMN ARIANNA/ROSSELLA |
| 5 | OB117 | DOOR UPPER LISTEL XF030 |
| 6 | OB118 | DOOR LOWER BENDED LISTEL XF030 |
| 20 | TG010 | FLAT ALUMINIUM PAN ARIA 437x311 mm |
| 22 | 2H038 | BRUSHED TUBE HANDLE AISI304 D 15 L=519 ARIANNA |
| 24 | MG119 | DOOR HANDLE TERMINAL |
| 25 | CR070 | RIGHT/LEFT HINGE ELENA |
| 26 | CR100 | ROLLER HOLDER COUNT.SUNK HOLE 42008750 |
| 41 | MN1000A0 | KNOB WITH SER.SILVER INDEX |
| 43 | MN1050A0 | PLASTIC DIAL FOR TIMER 0-120 MIN STD W/ SILVER DIGITS |
| 46 | MN1065A0 | PLASTIC DIAL FOR THERMOSTAT 80-300 °C XF006-016 SILVER DI |
| 48 | TM023 | TIMER MI2 120 min 2678 A 250V 16A |
| 50 | TR006 | THERMOSTAT 50-295 °C 55.19052.861 |
| 51 | TM012B | ELECTRONIC BUZZER 15 SEC. USA-EUR WELDED FASTON |
| 52 | VE177 | FLUORINE WARNING LIGHT STD 230V |
| 53 | VE162 | INTERNAL PILOT LAMP SUPPORT |
| 54 | VE161 | BLACK ELLIPTICAL SUPPORT D16 |

| | | |
|-----|----------|---|
| 56 | VE165 | GREEN PILOT WITH GOLD SINUSOIDE SERIGRAPHY |
| 58 | VE164 | GREEN PILOT WITH GOLD THERMOMETER SERIGRAPHY |
| 68 | 2A0010 | STANDARD UNPROCESSED STAINLESS STEEL CONTROL PANEL AR |
| 95 | CE116 | EL.CABLE3x1.5+SCHUKO+TERM. |
| 111 | VN050 | TWIN MOTOR FAN VR150 H40 220V 50Hz |
| 117 | RS090 | CIRC. HEAT. ELEMENT 1260W 220-230V |
| 139 | TR254 | SECURITY THERMOSTAT BIP. 335 °C |
| 140 | VM250 | "COMB" TERMINAL BOARD BM 5251 1 B3- |
| 143 | 2E010 | STANDARD BENDED ZINCED BOTTOM FOR ARIANNA |
| 144 | PD031 | BLACK FOOT H=20 4483.EA01X |
| 159 | OG011 | STAINLESS STEEL ARIANNA FAN GUARD |
| 160 | 6H013 | INNER DIVISION FAN GUARD |
| 165 | 0H318A | ENG-SOSTEGNO BULBO STANDARD '02 |
| 166 | VI052 | SCREW TO STOP LATERAL SUPPORTS XF/XV/XG M5x12.5 |
| 169 | GR333A | LATERAL GRID FOR ARIANNA OVEN |
| 171 | GN021A | BLACK DOOR GASKET XT55/65 8 HOOKS L=1253 ARIANNA |
| 172 | VE030 | COMPLETE INNER LIGHT ART7722212.10 |
| 195 | 6F010 | PRINTED ZINCED BACK FOR ARIANNA STANDARD |
| 196 | 6H459 | MOULDED EX-HAUST FUMES CHIMNEY 16x96 Sp=1 ARIANNA '99 |
| 197 | 0H1065A0 | NEW STANDARD CAVITY SUPPORT |
| 198 | 2D010 | FLAT STAINLESS STEEL COVER FOR ARIANNA OVEN |