



Mod.	From serial N°. A partir máq. N°.
PB32**	2.175.369
X13**	2.205.037

Parts Handbook for Flatwork Ironers Manual de Despiece para Planchadoras Secadoras Notice Vues Eclatées pour Sécheuses Repasseuses PB32** - X13**

GIRBAU, SA
Crta de Manlleu, km. 1
08500 VIC (Barcelona) • SPAIN

Comercial:
Tel.(+ 34) 902 300 359
comercial@girbau.es

Internacional:
Tel.(+ 34) 938 862 219
sales@girbau.es

Posventa:
Tel.(+ 34) 902 300 357
sat@girbau.es

Para **USA y CANADÁ:**
CONTINENTAL GIRBAU Inc.
2500 State Road 44
WI 54904 Oshkosh • USA
Tel. 1(920) 231-8222
info@continentalgirbau.com
www.continentalgirbau.com



**Parts Handbook
Despiece
Vues Eclatées**

PB32
X13****

NOTES TO USE PARTS LIST

Sheets no. 1,2,3,4,5 & 6:
Are common for all versions.

Sheet no. 7:
Relates to electrical heated machines.

Sheet no. 8:
Relates to gas heated machines.

(Models equivalence)

PB3215 = X13061
PB3221 = X13084

ACLARACIONES PARA EL USO DEL DESPIECE

Hojas nº 1,2,3,4,5 y 6:
Son comunes a todas las variantes.

Hoja nº 7:
Corresponde a las máquinas con calefacción eléctrica.

Hoja nº 8:
Corresponde a las máquinas con calefacción a gas.

(Equivalencia de modelos)

PB3215 = X13061
PB3221 = X13084

NOTES UTILISATION VUES ECLATEES

Feuilles no.1,2,3,4,5 et 6:
Sont communes à toutes les versions.

Feuille no. 7 :
Correspond aux machines à chauffage électrique.

Feuille no. 11 :
Correspond aux machines à chauffage à gaz.

(Équivalence des modèles)

PB3215 = X13061
PB3221 = X13084

VERY IMPORTANT:

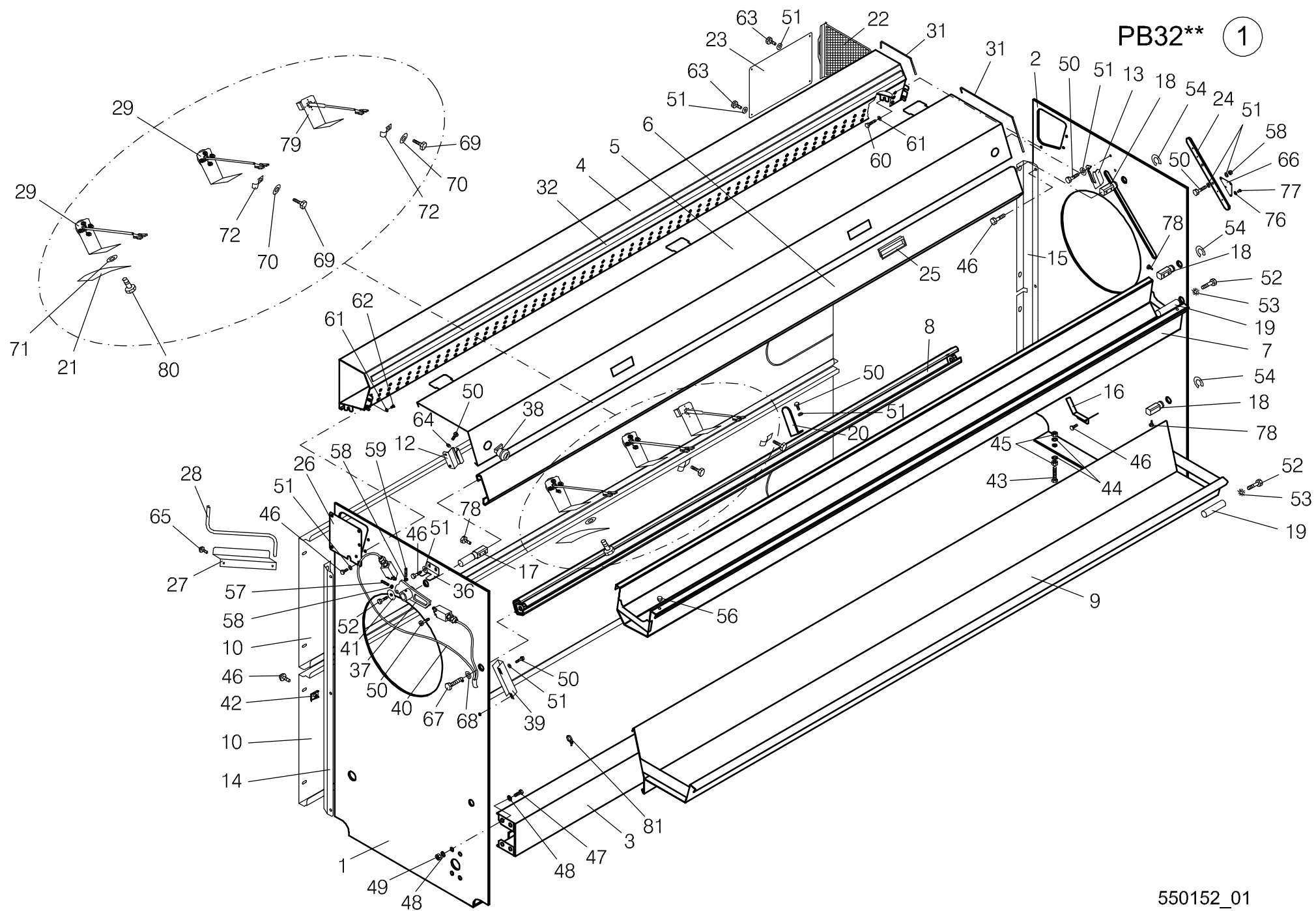
Before ordering parts be sure they have not been modified. Check it on modification sheet, after the corresponding sheet.

MUY IMPORTANTE:

Al pedir una pieza cerciorarse antes de que la misma no ha sido modificada. Si lo hubiese sido, estaría situada como hoja de modificaciones, detrás de la hoja correspondiente.

TRES IMPORTANT:

Avant de commander une pièce, s'assurer qu'elle n'a pas été modifiée. Le vérifier sur feuille de modifications, derrière la feuille correspondante.



Nº	REF	DENOMINATION	DENOMINACIÓN	DENOMINATION
1	530956	LEFT BASE	BANCADA IZQUIERDA	BATI GAUCHE
2	531004	RIGHT BASE	BANCADA DERECHA	BATI DROITE
3	528182	BASE JOINTING (FOR 3221)	UNION BANCADAS (PARA 3221)	UNION BATI (POUR 3221)
	537910	BASE JOINTING (FOR 3215)	UNION BANCADAS (PARA 3215)	UNION BATI (POUR 3215)
4	560292	STEAM INTAKE HOSE (FOR 3221)	TUBO ASPIRACION VAHOS (PARA 3221)	TUBE ASPIRATION BUEES (POUR 3221)
	560284	STEAM INTAKE HOSE (FOR 3215)	TUBO ASPIRACION VAHOS (PARA 3215)	TUBE ASPIRATION BUEES (POUR 3215)
5	606079	UPPER COVER (FOR 3221)	TAPA SUPERIOR (PARA 3221)	COUVERCLE SUPERIEUR (POUR 3221)
	606095	UPPER COVER (FOR 3215)	TAPA SUPERIOR (PARA 3215)	COUVERCLE SUPERIEUR (POUR 3215)
6	528208	FINGER PROTECTION (FOR 3221)	GUARDAMANOS (PARA 3221)	PROTECTIO-DOIGTS (POUR 3221)
	538009	FINGER PROTECTION (FOR 3215)	GUARDAMANOS (PARA 3215)	PROTECTIO-DOIGTS (POUR 3215)
7	535765	INLET TRAY (FOR 3221)	BANDEJA ENTRADA (PARA 3221)	PLATEAU ENTREE (POUR 3221)
	539122	INLET TRAY (FOR 3215)	BANDEJA ENTRADA (PARA 3215)	PLATEAU ENTREE (POUR 3215)
8	527952	OUTLET SPRING BAR (FOR 3221)	BARRA MUELLES SALIDA (PARA 3221)	BARRE RESSORTS SORTIE (POUR 3221)
	537555	OUTLET SPRING BAR (FOR 3215)	BARRA MUELLES SALIDA (PARA 3215)	BARRE RESSORTS SORTIE (POUR 3215)
9	536177	OUTLET TRAY (FOR 3221)	BANDEJA SALIDA (PARA 3221)	PLATEAU SORTIE (POUR 3221)
	539148	OUTLET TRAY (FOR 3215)	BANDEJA SALIDA (PARA 3215)	PLATEAU SORTIE (POUR 3215)
10	560276	REAR COVER (FOR 3221)	TAPA POSTERIOR (PARA 3221)	COUVERCLE POSTERIEUR (POUR 3221)
	560268	REAR COVER (FOR 3215)	TAPA POSTERIOR (PARA 3215)	COUVERCLE POSTERIEUR (POUR 3215)
12	522243	UPPER COVER LEFT BRACKET	SOPORTE IZQUIERDO TAPA SUPERIOR	SUPPORT GAUCHE COUVERCLE SUP.
13	522219	UPPER COVER RIGHT BRACKET	SOPORTE DERECHO TAPA SUPERIOR	SUPPORT DROIT COUVERCLE SUP.

Nº	REF	DENOMINATION	DENOMINACIÓN	DENOMINATION
14	529164	REAR COVER LEFT BRACKET	SOPORTE IZQUIERDA TAPA POSTERIOR	SUPPORT GAUCHE COUVERCLE POST.
15	529172	REAR COVER RIGHT BRACKET	SOPORTE DERECHA TAPA POSTERIOR	SUPPORT DROIT COUVERCLE POST.
16	523514	TIGHTENER ROLL END-PIECE	TOPE RODILLO TENSOR	BUTEE ROULEAU TENDEUR
17	523498	FINGER-PROTECTION BRACKET	SOPORTE GUARDAMANOS	SUPPORT PROTECTION-DOIGTS
18	528877	INLET TRAY BRACKET	SOPORTE BANDEJA ENTRADA	SUPPORT PLATEAU ENTREE
19	262667	TRAY BAR END-PIECE	TOPE BARRA BANDEJA	ARRET BARRE PLATEAU
20	536300	INLET TRAY BRACKET	SOPORTE BANDEJA ENTRADA	SUPPORT PLATEAU ENTREE
21	192567	OUTLET SPRING	MUELLE SALIDA	RESSORT SORTIE
22	530907	EXTRACTION FILTER	FILTRO ASPIRACION	FILTRE ASPIRATION
23	535351	EXTRACTION HOSE CLEANING PLATE	PLACA LIMPIEZA TUBO ASPIRACION	PLAQUE NETTOYAGE TUBE ASPIRATION
24	549550	BASE ISOLATION	AISLANTE BANCADA	BATI ISOLANT
25	16-0049	HANDLE ENCLIPSABLE ALFAPLEX	ASA (TIRADOR) ENCLIPSABLE ALFAPLEX	POIGNEE ENCLIPSABLE ALFAPLEX
26	528463	ASPIRATION CONTROL PLATE	CHAPA REGISTRO ASPIRACION	PLAQUE CONTROL ASPIRATION
27	263525	HANDLE BRACKET	SOPORTE MANIVELA	SUPPORT MANIVELLE
28	268458	HANDLE	MANIVELA	MANIVELLE
29	554006	PS/PB TEMPERATURE PROBE	SONDA TEMPERATURA PS/PB	SONDE TEMPERATURE PS/PB
31	165472	ETHILENE-PROP. PROFILE (1 METER)	PERFIL ETILENO-PROP.REF.44117L (1 METRO)	PROFILE ETHILENE-PROP. (1 METRE)
32	110114	PROFILE EXTRA 5463GREY 6X9X4 (1 METER)	BURL.AISLAN.TESA 5463-22 6X9X4 (1 METRO)	PROFILE EXTRA 5463GRIS 6X9X4 (1 METRE)
36	530766	FINGER PROTECTION END-PIECE	TOPE GUARDAMANOS	BUTEE PROTECTION DOIGTS
37	545103	MICROSWITCH DRIVE	ACCIONADOR MICRORRUPTOR	ACTIONNEMENT MICRORRUPTEUR
38	521518	POLYAMIDE LOCK *	CIERRE POLIAMIDA *	FERMETURE POLYAMIDE *
39	536722	INSTALLATION PROTECTION	PROTECCION INSTALACION	PROTECTION INSTALLATION
40	536623	FINGER PROTEC. ELEC.INSTAL.	INST.ELEC.PROTECCION MANOS	INSTAL.ÉLEC.PROTEC.DOIGTS
	305029	SWITCH (FINGER PROTEC. ELEC.INSTAL. INCLUDED)	INT. POSICION XCK-P2102G11 (INCLUIDO EN INST.ELEC.PROTECCION MANOS)	INTERRUPTEUR (COMPRIS DANS INSTAL.ELEC.PROTEC.DOIGTS)
	140301	REDUCER PG11-9 BRASS (FINGER PROTEC. ELEC.INSTAL. INCLUDED)	REDUCCIÓN DE ROSCA PG11-9 LATON (INCLUIDO EN INST.ELEC.PROTECCION MANOS)	REDUCTEUR PG11-9 LAITON (COMPRIS DANS INSTAL.ELEC.PROTEC.DOIGTS)
	310243	STUFFING-BOX PG 9 POLYAMIDE * (FINGER PROTEC. ELEC.INSTAL. INCLUDED)	PRENSAESTOPAS PG 9 POLIAMIDA* (INCLUIDO EN INST.ELEC.PROTECCION MANOS)	PRESSE-ETOUPES PG 9 POLYAMIDE * (COMPRIS DANS INSTAL.ELEC.PROTEC.DOIGTS)

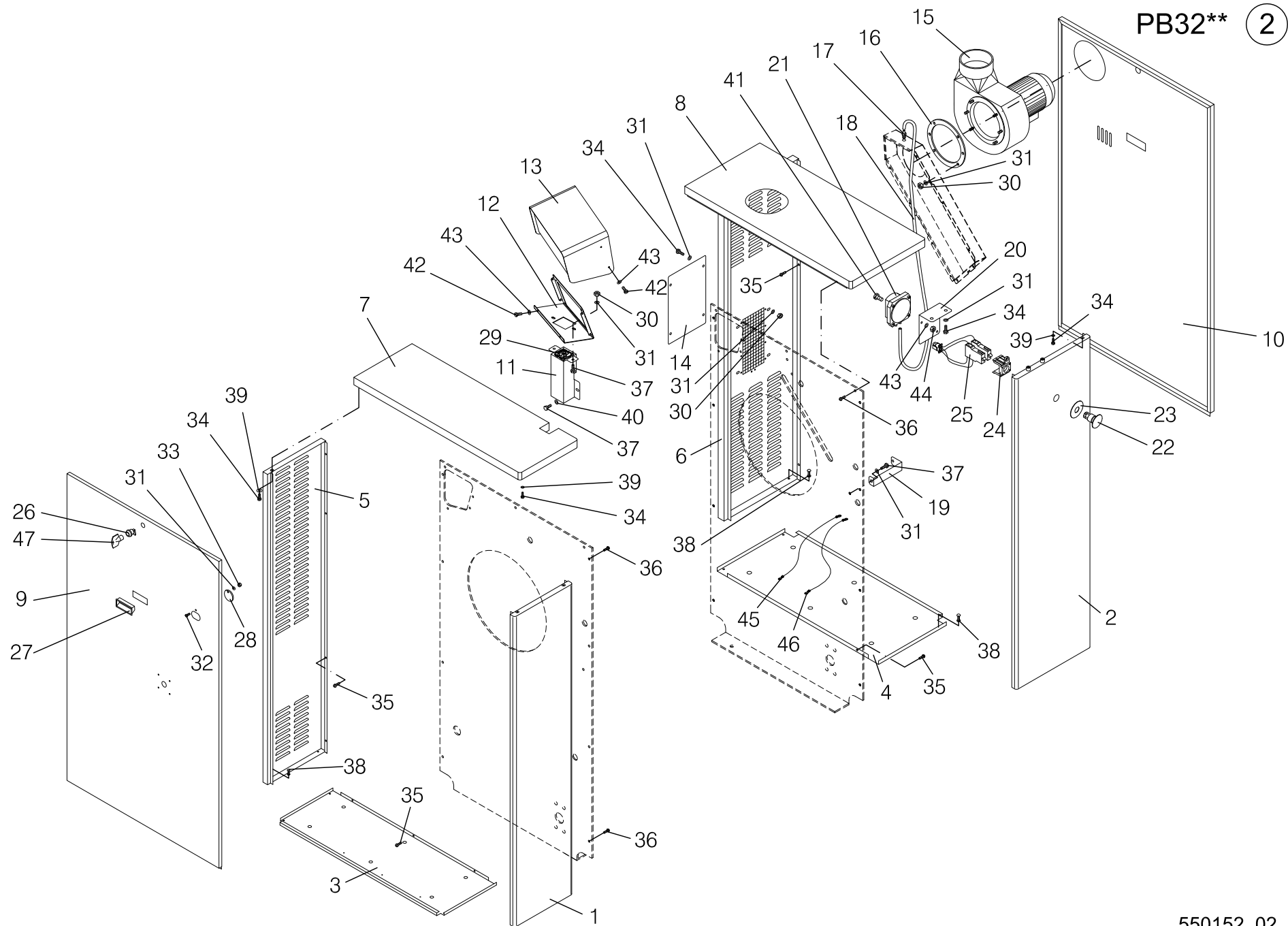
Nº	REF	DENOMINATION	DENOMINACIÓN	DENOMINATION
41	281469	WASHER 47X9X0.4 PVC TRANSPORT FIXING PIECES	ARANDELA 47X9X0.4 PVC PIEZAS FIJACION TRANSPORTE	RONDELLE 47X9X0.4 PVC PIECES FIXATION TRANSPORT
42	332114	NUT M6	TUER.RAPIDA TRT M6-1 0212827	ECROU M6
43	146688	BI HEX.SCREW DIN933-8. M12X 50	TOR.EX.DIN933-8.8 B.TRI.M12X50	VIS HEX.DIN933-8.8 BICR.M12X50
44	149419	BICR.WASHER B DIN125-ST 13	ARAN.B DIN125-ST B.TRI.13	RONDELLE B DIN125-ST BICR.13
45	150235	BICR.HEX NUT DIN 934-8 M-12	TUER.EX.DIN934-8 B.TRI.M12	ECROU HEX DIN 934-8 BICR.M-12
46	328245	PAN HEAD SCREW T25 AR.18ESTR.M 6X10	TORNILLO C.ALOM.T25 M 6X10 (ESPECIAL)*	VIS À TÊTE PAN T25 AR.18ESTR.M 6X10
47	147009	HEX SCREW 8G DIN 933 M-10X25	TOR.EX.DIN933-8.8 B.TRI.M10X25	VIS HEX. DIN 933 M-10X25 8G
48	149690	BICR.EXT TOOT.WASH.DIN6798 M10	ARAN.DEN.EXT.B.TRI.DIN6798M10	RONDEL DEN EX.BICR.DIN6798 M10
49	150193	BICR HEX NUT DIN 934-8 M10	TUER.EX.DIN934-8 B.TRI.M10	ECROU HEX DIN 934-8 BICR.M10
50	165621	BIC HEX SCREW DIN933-8,8 M6X10	TOR.EX.DIN933-8.8 B.TRI.M 6X10	VIS HEX DIN933-8,8 BICR M6X10
51	149526	BICR.WASHER B DIN125-ST 6,4	ARAN.B DIN125-ST B.TRI. 6,4	RONDELLE B DIN125-ST BICR.6,4
52	192849	BIC.HEX SCREW DIN933-8 M-8X25	TOR.EX.DIN933-8.8 B.TRI.M 8X25	VIS HEX.DIN933-8,8 BICR.M-8X25
53	149708	BICR.EXT.TOOT.WASH.DIN6798 M8	ARAN.DEN.EXT.B.TRI.DIN6798M 8	RONDEL.DEN.EX.BICR.DIN6798 M8
54	132555	SAFETY WASHER 15 DIN 6799	ARANDELA SEGURIDAD 15 DIN 6799	RONDELLE SECURITE 15 DIN 6799
55	144782	INOX HEX SCREW DIN933 M 5X15	TOR.EX.DIN933INOX A2-70 M 5X15	VIS HEX INOX DIN933 M 5X15
56	539734	END-PIECE REF.10152	TOPE A PRESION REF.10152	ARRET REF.10152
57	144071	ALLEN BUMP DIN916 M6X12	ESP.ALL.DIN916-10.9 M 6X12	GOUJON ALLEN DIN916 M6X12
58	150227	BICR HEX NUT DIN934-8 M6	TUER.EX.DIN934-8 B.TRI.M 6	ECROU HEX DIN934-8 BICR.M6
59	144147	ALLEN BUMP DIN913-10.9 M6X30	ESP.ALL.DIN913-10.9 M 6X30	GOUJON ALLEN DIN913-10.9 M6X30
60	144923	INOX HEX.SCREW DIN 933 M-6X20	TOR.EX.DIN933INOX A2-70 M 6X20	VIS HEX INOX DIN 933 M-6X20
61	149310	INOX.A2 WASHER DIN125 6,4	ARAN. DIN125 INOX A2 6,4	RONDELLE INOX.A2 DIN125 6,4
62	144907	INOX HEX SCREW DIN 933 M-6X10	TOR.EX.DIN933INOX A2-70 M 6X10	VIS HEX INOX DIN 933 M-6X10
63	146233	BICR.HEX SCREW DIN933-8 M6X15	TOR.EX.DIN933-8.8 B.TRI.M 6X15	VIS HEX DIN933-8.8 BICR.M6X15
64	149716	BICR.EXT TOOT.WASH.DIN6798 M6	ARAN.DEN.EXT.B.TRI.DIN6798M 6	RONDEL.DEN.EX.BICR DIN6798 M6
65	183400	PLATE SCREW ST-4, 20 P.F. C/AL.T25	TORNILLO CHAPA ST-4 (ESPECIAL)*	VIS PLAQUE ST-4, 20 P.F. C/AL.T25
66	549543	BASE ISOLATION BRACKET	SOPORTE AISLANTE BANCADA	SUPPORT ISOLANT BATI
67	116764	HEX SCREW 8G DIN933 M-12X25	TOR.EX.DIN933-8.8 B.TRI.M12X25	VIS HEX. 8G DIN933 M-12X25
68	149682	BICR.EXT.TOOT.WASH.DIN6798 M12	ARAN.DEN.EXT.B.TRI.DIN6798M12	RONDEL.DEN.EX.BICR.DIN6798 M12

Nº	REF	DENOMINATION	DENOMINACIÓN	DENOMINATION
69	146258	BIC.HEX SCREW DIN933-4.8 M4X10	TOR.EX.DIN933-4.8 B.TRI.M 4X10	VIS HEX DIN933-4.8 BICR.M 4X10
70	149476	BICR.WASHER B DIN125-ST 4,3	ARAN.B DIN125-ST B.TRI. 4,3	RONDELLE B DIN125-ST BICR.4,3
71	302547	GASKET TEFLON D15 XD 7X1,5	JUNTA TEFLON D14XD4,5X1,5	JOINT TEFLON D15 XD 7X1,5
72	198507	FIXING CLAMP 1X 8 DIN 72571	ABRAZ.FIJACION 1X 8 DIN 72571	BRIDE FIXATION 1X 8 DIN 72571
76	149328	INOX A2 WASHER DIN 125 4,3	ARAN. DIN125 INOX A2 4,3	RONDELLE INOX A2 DIN 125 4,3
77	339374	SCREW RF81T 4X8	TORNILLO RF81T 4X8 (ESPECIAL)	VIS RF81T 4X8
78	333294	SCREW T25 AR.18ESTR.M 6X15 INOX	TORNILLO ALOM.T25 M 6X15 INOX(ESPECIA	VIS T25 AR.18ESTR.M 6X15 INOX
79	623405	SET THERMOSTAT PB32	CONJUNTO TERMOSTATO PB32	THERMOSTAT PB32
80	328229	SCREW ALO.T25 AR.18ESTR.M 4X10	TORNILLO ALOM.T25 M 4X10 (ESPECIAL)*	VIS ALOM.T25 AR.18ESTR.M 4X10
81	140525	CLAMP 2244-0	BRIDA UNEX 2244-0 *	BRIDE 2244-0

N°	REF	DENOMINATION	DENOMINACIÓN	DENOMINATION
		FROM MACHINE Nr: 2.175.784 2.205.108	A PARTIR DE LA MAQUINA No : 2.175.784 2.205.108	A PARTIR DE LA MACHINE NR: 2.175.784 2.205.108
29	638726	PB TEMPERATURE PROBE	SONDA TEMPERATURA PB32	SONDE TEMPERATURE PB

PB32**

2

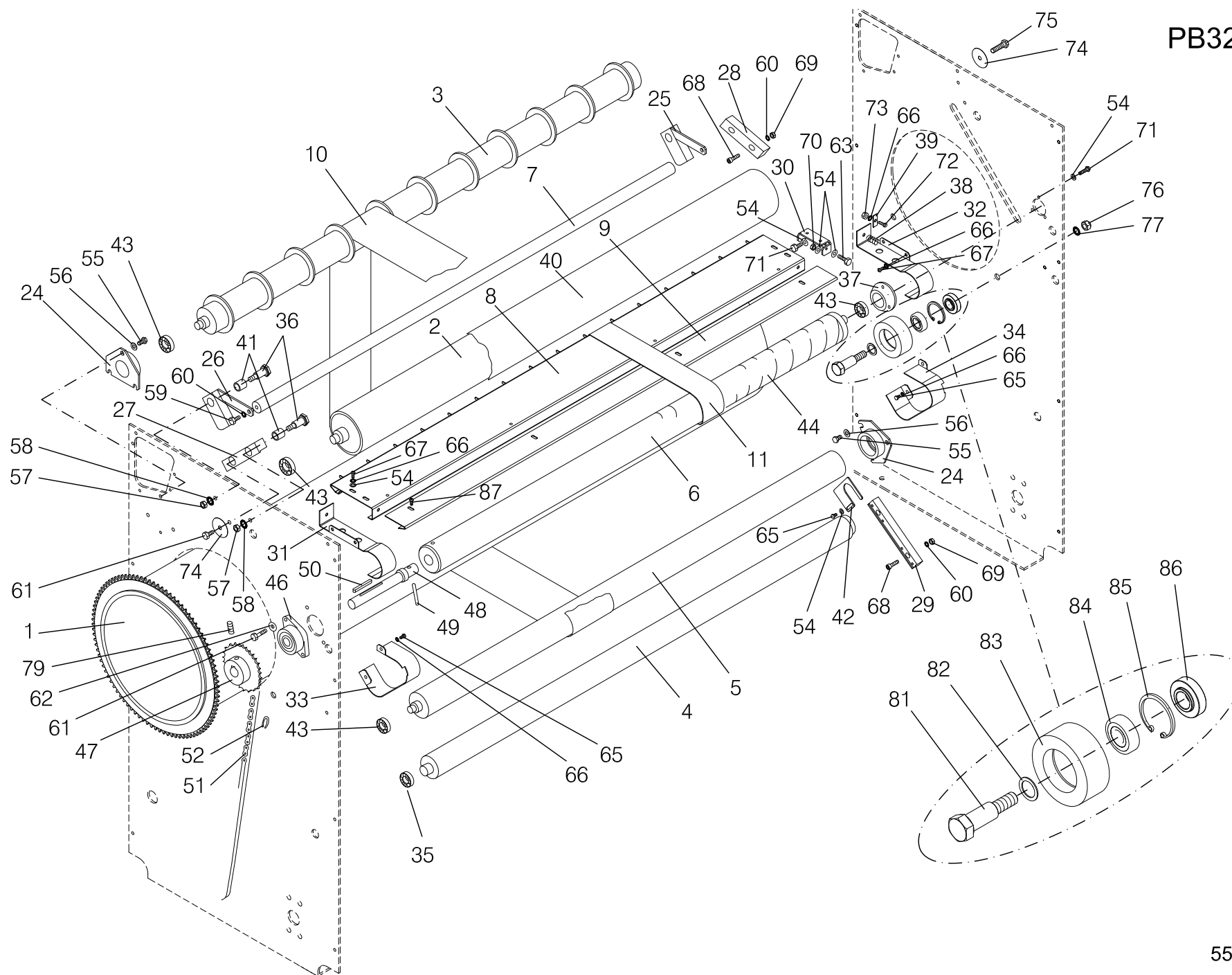


Nº	REF	DENOMINATION	DENOMINACIÓN	DENOMINATION
1	540484	LEFT FRONT COVER	TAPA FRONTAL IZQUIERDA	COUVERCLE FRONTAL GAUCHE
2	540476	RIGHT FRONT COVER	TAPA FRONTAL DERECHA	COUVERCLE FRONTAL DROIT
3	529693	LEFT LOWER COVER	TAPA INFERIOR IZQUIERDA	COUVERCLE INFERIEUR GAUCHE
4	540203	RIGHT LOWER COVER	TAPA INFERIOR DERECHA	COUVERCLE INFERIEUR DROIT
5	529834	LEFT REAR COVER	TAPA POSTERIOR IZQUIERDA	COUVERCLE POSTERIEUR GAUCHE
6	529842	RIGHT REAR COVER	TAPA POSTERIOR DERECHA	COUVERCLE POSTERIEUR DROIT
7	540468	LEFT UPPER COVER	TAPA SUPERIOR IZQUIERDA	COUVERCLE SUPERIEUR GAUCHE
8	540450	RIGHT UPPER COVER	TAPA SUPERIOR DERECHA	COUVERCLE SUPERIEUR DROIT
9	606020	LEFT SIDE PANEL	TAPA LATERAL IZQUIERDA	COUVERCLE LATERAL GAUCHE
10	606038	RIGHT SIDE PANEL	TAPA LATERAL DERECHA	COUVERCLE LATERAL DROIT
11	521930	CONTROL BOX BRACKET	SOPORTE CAJA MANDOS	SUPPORT BOITE COMMANDES
12	532366	CONTROL BOX	CAJA MANDOS	BOITE COMMANDEMENTS
13	532432	CONTROL BOX COVER SET	CONJUNTO TAPA CAJA MANDOS	ENSEMBLE COUVERCLE BOITE COMMANDES
14	517771	GRID COVER (FOR MACHINES ELECTR.HEATING) (ATMOSPHERIC BURNER)	TAPA REJILLA (PARA MODELOS CALEFAC.ELECTR.) (PARA QUEMADOR ATMOSFERICO)	COUVERCLE GRILLAGE (POUR MACHINES CHAUF.ELECTR.) (POUR BRÔLEUR ATMOSPHERIQUE)
15	521229	FAN PB-32 *	VENTILADOR EXTRACTOR PB-32	VENTILATEUR PB-32*
16	522359	EXTRACTOR DIVIDER	SEPARADOR EXTRACTOR	SEPARATEUR EXTRACTEUR
17	336081	PRESSURE SWITCH INTAKE	TOMA PRESOSTATO	PRISE PRESSOSTAT
18	302026	SILICONE HOSE (1 METER)	TUBO SILICONA SILIGLASS 3X6MM (1 METRO)	TUBE SILICONE (1 METRE)
19	536920	INSTALLATION BRACKET	SOPORTE INSTALACION	SUPPORT INSTALLATION
20	545152	PRESSURE SWITCH BRACKET	SOPORTE PRESOSTATO	SUPPORT PRESSOSTAT
21	549568	AIR DIFF.PRESSOSTAT (SETTING 60PA) *	PRESOSTATO DIF.AIRE (TARAJE: 60PA) *	PRESSOSTAT DIFF.AIR (RÉGLAGE 60 PA) *
22	341479	MUSHROOM PUSH BUTTON A223-M	PUL.HONGO ENCL.A22E-M	PULSATEUR TYPE COUPE DE POING A22E-M
23	192294	YELLOW RING	ARO AMARILLO	BAGUE JAUNE
24	341503	CONNECTION BRACKET A22-3200	SOPORTE CONEXION A22-3200	SUPPORT CONNEXION A22-3200
25	534206	EMERGENCY STOP PLUG	CONECTORA PARO EMERGENCIA	CONNECTEUR ARRET EMERGENCE
26	521518	POLYAMIDE LOCK *	CIERRE POLIAMIDA *	FERMETURE POLYAMIDE *
27	16-0049	HANDLE ENCLIPSABLE ALFAPLEX	ASA (TIRADOR) ENCLIPSABLE ALFAPLEX	POIGNEE ENCLIPSABLE ALFAPLEX

Nº	REF	DENOMINATION	DENOMINACIÓN	DENOMINATION
28	530931	HANDLE INLET COVER	TAPA ENTRADA MANIVELA	COUVERCLE ENTREE MANIVELLE
29	292383	CERAMIC FIBER	FIBRA CERAMICA (60X100 MM.)	FIBRE CERAMIQUE
30	150227	BICR HEX NUT DIN934-8 M6	TUER.EX.DIN934-8 B.TRI.M 6	ECROU HEX DIN934-8 BICR.M6
31	149526	BICR.WASHER B DIN125-ST 6,4	ARAN.B DIN125-ST B.TRI. 6,4	RONDELLE B DIN125-ST BICR.6,4
32	145367	INOX SCREW DIN85 M6X20 A2-70	TOR.PLA.DIN85 INOX A2-70 M6X20	VIS INOX DIN85 M6X20 A2-70
33	176834	SELF-LOCKING NUT DIN985-8 B.TRI.M6	TUER.AUTOBL.DIN985-8 B.TRI.M6	ECROU AUTOBLOCANT DIN985-8 B.TRI.M6
34	146233	BICR.HEX SCREW DIN933-8 M6X15	TOR.EX.DIN933-8.8 B.TRI.M 6X15	VIS HEX DIN933-8.8 BICR.M6X15
35	328245	PAN HEAD SCREW T25 AR.18ESTR.M 6X10	TORNILLO C.ALOM.T25 M 6X10 (ESPECIAL)*	VIS À TÊTE PAN T25 AR.18ESTR.M 6X10
36	333294	SCREW T25 AR.18ESTR.M 6X15 INOX	TORNILLO ALOM.T25 M 6X15 INOX(ESPECIA	VIS T25 AR.18ESTR.M 6X15 INOX
37	165621	BIC HEX SCREW DIN933-8,8 M6X10	TOR.EX.DIN933-8.8 B.TRI.M 6X10	VIS HEX DIN933-8,8 BICR M6X10
38	151878	RIVET POP TLP/D/636/BS4,8X 9,1	REMA.POP TLP/D/636/BS 4,8X 9,1	RIVET TLP/D/636/BS 4,8X 9,1
39	153205	WASHER 20X7X2	ARANDELA 20X7X2 TRIVALEN.	RONDELLE 20X7X2
40	149716	BICR.EXT TOOT.WASH.DIN6798 M6	ARAN.DEN.EXT.B.TRI.DIN6798M 6	RONDEL.DEN.EX.BICR DIN6798 M6
41	145631	INOX FLAT SCREW DIN85 A2-70 M4X16	TOR.PLA.DIN85 INOX A2-70 M4X16	VIS PLAT INOX DIN85 A2-70 M4X16
42	145664	INOX FLAT SCREW DIN85 M 4X8	TOR.PLA.DIN85 INOX A2-70 M4X 8	VIS PLAT INOX DIN85 M 4X8
43	149328	INOX A2 WASHER DIN 125 4,3	ARAN. DIN125 INOX A2 4,3	RONDELLE INOX A2 DIN 125 4,3
44	150185	BICR.HEX.NUT DIN934-8 M4	TUER.EX.DIN934-8 B.TRI.M 4	ECROU HEX.DIN934-8 BICR.M4
45	549055	GROUND WIRE	CABLE TIERRA	PRISE DE TERRE
46	549063	GROUND WIRE	CABLE TIERRA	PRISE DE TERRE
47	568352	KEY FOR LOCK	LLAVE PARA CIERRE *	CLE POUR FERMETURE

PB32**

3

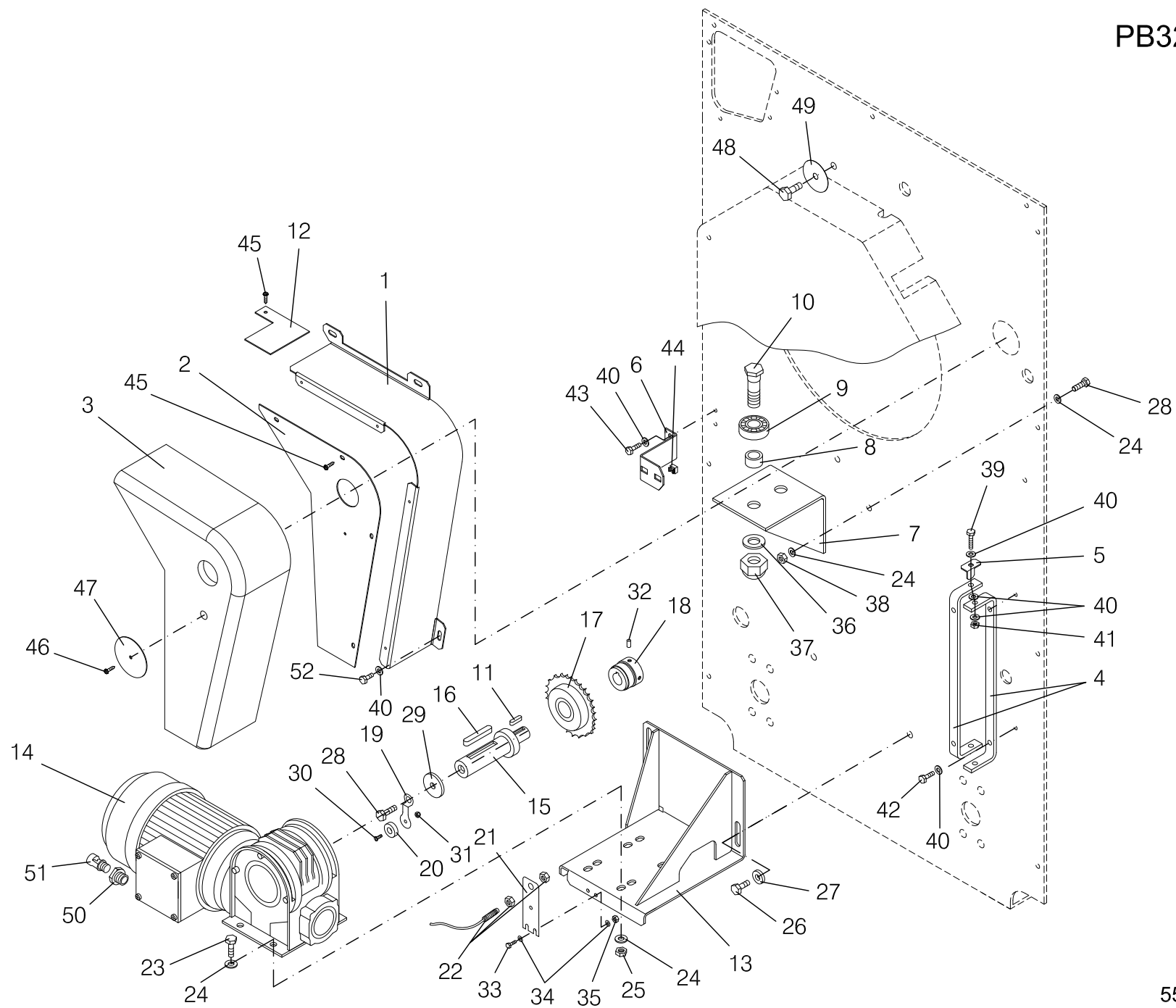


Nº	REF	DENOMINATION	DENOMINACIÓN	DENOMINATION
1	526939	CHROMED CYLINDER SET (FOR 3221)	CONJUNTO CILINDRO (CROMADO) (PARA 3221)	ENSEMBLE CYLINDRE (CHROME) (POUR 3221)
	537274	CHROMED CYLINDER SET (FOR 3215)	CONJUNTO CILINDRO (CROMADO) (PARA 3215)	ENSEMBLE CYLINDRE (CHROME) (POUR 3215)
2	527325	UPPER ROLL (FOR 3221)	RODILLO SUPERIOR (PARA 3221)	ROULEAU SUPERIEUR (POUR 3221)
	537175	UPPER ROLL (FOR 3215)	RODILLO SUPERIOR (PARA 3215)	ROULEAU SUPERIEUR (POUR 3215)
3	527242	REAR ROLL (FOR 3221)	RODILLO POSTERIOR (PARA 3221)	ROULEAU ARRIERE (POUR 3221)
	537159	REAR ROLL (FOR 3215)	RODILLO POSTERIOR (PARA 3215)	ROULEAU ARRIERE (POUR 3215)
4	527473	TIGHTENING ROLL (FOR 3221)	RODILLO TENSOR (PARA 3221)	ROULEAU TENDEUR (POUR 3221)
	537209	TIGHTENING ROLL (FOR 3215)	RODILLO TENSOR (PARA 3215)	ROULEAU TENDEUR (POUR 3215)
5	527077	LOWER ROLL (FOR 3221)	RODILLO INFERIOR (PARA 3221)	ROULEAU INFERIEUR (POUR 3221)
	537134	LOWER ROLL (FOR 3215)	RODILLO INFERIOR (PARA 3215)	ROULEAU INFERIEUR (POUR 3215)
6	559492	CLOTH INLET ROLL(WITH SHAFT) (FOR 3221) (SHAFT INCLUDED)	RODILLO ENTRADA ROPA (PARA 3221) (INCLUYE EJE)	ROULEAU ENTREE LINGE(AVEC AXE) (POUR 3221) (COMPRIS AXE)
	559443	CLOTH INLET ROLL(WITH SHAFT) (FOR 3215) (SHAFT INCLUDED)	RODILLO ENTRADA ROPA (PARA 3215) (INCLUYE EJE)	ROULEAU ENTREE LINGE(AVEC AXE) (POUR 3215) (COMPRIS AXE)
7	527556	KNOB (FOR 3221)	TIRADOR (PARA 3221)	POIGNEE (POUR 3221)
	281873	KNOB (FOR 3215)	TIRADOR (PARA 3215)	POIGNEE (POUR 3215)
8	528729	CLOTH INLET (FOR 3221)	ENTRADA ROPA (PARA 3221)	ENTREE LINGE (POUR 3221)
	538447	CLOTH INLET (FOR 3215)	ENTRADA ROPA (PARA 3215)	ENTREE LINGE (POUR 3215)
9	528745	CLOTH INLET PROTECTION (FOR 3221)	PROTECCION ENTRADA ROPA (PARA 3221)	PROTECTION ENTREE LINGE (POUR 3221)
	538454	CLOTH INLET PROTECTION (FOR 3215)	PROTECCION ENTRADA ROPA (PARA 3215)	PROTECTION ENTREE LINGE (POUR 3215)

Nº	REF	DENOMINATION	DENOMINACIÓN	DENOMINATION
10	528067	IRONING STRAP (PIN INCLUDED)	BANDA PLANCHADO (INCLUYE PASADOR)	BANDE REPASSAGE (COMPRIS GOUJON)
	196048	PIN 194MM	PASADOR ROJO PARA BANDA 194MM.	GOUJON 194MM
11	528083	CLOTH INLET BAND	BANDA ENTRADA ROPA	BANDE ENTREE LINGE
13	526855	BEARING CENTRAL BODY	CUERPO CENTRAL RODAMIENTO	CORPS CENTRAL ROULEMENT
14	526848	DIVIDER RING	ANILLO SEPARADOR	BAGUE SEPARATEUR
15	526830	WASHER 18X8.5X3	ARANDELA 18X8.5X3 TRIVALEN.	RONDELLE 18X8.5X3
16	526772	BEARING SPRING	BULON RODAMIENTOS	BOULON ROULEMENTS
17	526350	FLEXIBLE RING E-35 DIN 471	ANILLO ELASTICO E-35 DIN 471	BAGUE ELASTIQUE E-35 DIN 471
18	526343	FLEXIBLE RING I-26 DIN 472	ANILLO ELASTICO I-26 DIN 472	BAGUE ELASTIQUE I-26 DIN 472
19	316687	FLEXIBLE RING I-62 DIN 472	ANILLO ELASTICO I- 62 DIN 472	BAGUE ELASTIQUE I-62 DIN 472
20	526335	RADIAL HINGE JOINT TYPE GE 15C	ROTULA RADIAL TIPO GE 15C	ROTULE RADIAL TYPE GE 15C
21	526103	SPECIAL BEARING	RODAMIENTO ESPECIAL	ROULEMENT SPECIAL
22	149708	BICR.EXT.TOOT.WASH.DIN6798 M8	ARAN.DEN.EXT.B.TRI.DIN6798M 8	RONDEL.DEN.EX.BICR.DIN6798 M8
23	150201	BICR.HEX NUT DIN 934-8 M-8	TUER.EX.DIN934-8 B.TRI.M 8	ECROU HEX.DIN 934-8 BICR.M-8
24	527028	ROLL BRACKET	SOPORTE RODILLOS	SUPPORT ROULEAU
25	281592	ROLL PRES.CAM	LEVA RODILLO PRESOR	LEVE ROULEAU
26	281600	ROLL PRES.CAM	LEVA RODILLO PRESOR	LEVE ROULEAU PRES.
27	526970	ROLL GUIDE	GUIA RODILLO	GUIDE ROULEAU
28	281279	ROLL GUIDE	GUIA RODILLO	GUIDE ROULEAU
29	526947	ROLL GUIDE	GUIA RODILLO	GUIDE ROULEAU
30	528760	CLOTH INLET BRACKET	SOPORTE ENTRADA ROPA	SUPPORT ENTREE LINGE
31	528802	LEFT SIDE PROTECTION	PROTECCION LATERAL IZQUIERDA	PROTECTION LATERAL GAUCHE
32	528885	RIGHT SIDE PROTECTION	PROTECCION LATERAL DERECHA	PROTECTION LATERAL DROITE
33	529230	ROLL LEFT PROTECTION	PROTECCION IZQUIERDA RODILLO	PROTECTION GAUCHE ROULEAU
34	529248	ROLL RIGHT PROTECTION	PROTECCION DERECHA RODILLO	PROTECTION DROITE ROULEAU
36	527580	SPRING	BULON	BOULON
37	559435	CLOTH INLET ROLL BRACKET	SOPORTE RODILLO ENTRADA ROPA	SUPPORT ROULEAU ENTREE LINGE
38	196303	FINGER PROTECTION SPRING	MUELLE GUARDAMANOS	RESSORT PROTECTION DOIGTS

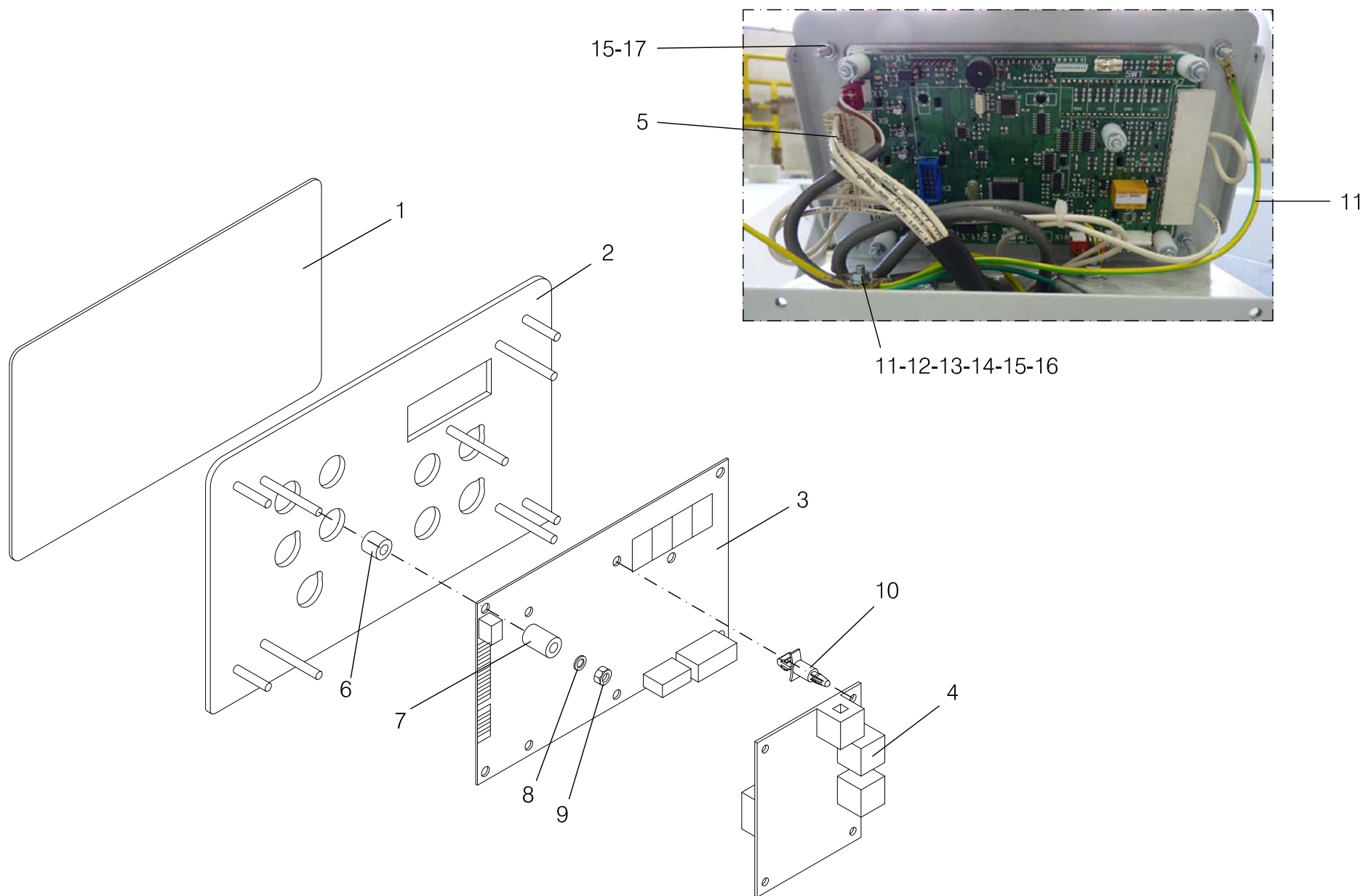
Nº	REF	DENOMINATION	DENOMINACIÓN	DENOMINATION
39	268987	FINGERS PROTECT.SPRING FIXING	SUJECCION MUELLE GUARDAMANOS	FIXATION RESSORT PROTECT.DOIGT
40	537753	NOMEX FELT OR EQUIVALENT 600G1,220X2,212 (FOR 3221)	MULET.NOMEX O EQUIVAL.600GR.1,220X2,212 (PARA 3221)	MOLLET. NOMEX OU ÉQUIVAL.600G1,220X2,212 (POUR 3221)
	553487	NOMEX FELT OR EQUIVALENT 600G1,220X1,630 (FOR 3215)	MULET.NOMEX O EQUIVAL. 600GR.1,220X1,630 (PARA 3215)	MOLLET. NOMEX OU ÉQUIVAL.600G1,220X1,630 (POUR 3215)
	149062	GAMMA ADHESIVE 3085/25 (5 L.)	ADHESIVO GAMMA 3088/25 LATA 5L	ADHESIVE GAMMA 3085/25 (5 L.)
41	302596	SELFOIL SLEEVE B11A20-15-20	COJ. SELFOIL B11A20-15-20	FRETTE SELFOIL B11A20-15-20
42	558064	TRANSPORT FIXING	FIJACION TRANSPORTE	FIXATION TRANSPORT
43	523555	SPECIAL BEARING	RODAMIENTO ESPECIAL	ROULEMENT SPECIAL
44	332866	ADHESIVE POLY RIBBON 50X1.8MM (1 METER)	CINTA POLY-SIL ADHESI.50X1.8MM (1 METRO)	SANGLE POLY-SIL ADHES.50X1.8MM (1 METRE)
	151993	ADHESIVE FABRIC 50X19 (1 COIL)	TEJIDO VISCOSILLA AUTOAD.50X19 (1 ROLLO)	TISSU ADHÉSIF 50X19 (1 ROULEAU)
46	132829	CLAMP BRACKET ATM UCFL-20	SOPORTE BRIDA ATM UCFL-20	SUPPORT BRIDE ATM UCFL-20
47	258830	CLOTH INLET PINION	PIÑON ENTRADA ROPA	PIGNON ENTREE LINGE
48	269787	CLOTH INLET SHAFT	EJE ENTRADA ROPA	AXE ENTREE LINGE
49	196451	FLEXIBLE PIN DIN1481 D8X60	PASADOR ELASTICO DIN1481 D8X60	GOUJON ELASTIQUE DIN1481 D8X60
50	128751	PIN DIN6885-A 55X6X6	CHAVETA DIN 6885-A 55X 6X6	CLAVETTE DIN6885-A 55X6X6
51	132381	SIMPLE CHAIN ISO083 12,7X4,88 (1 METER)	CADENA SIMPLE ISO083 12,7X4,88 (1 METRO)	CHAINE SIMPLE ISO083 12,7X4,88 (1 METRE)
52	131680	CHAIN JOINTING ISO083 12,7X4,8	UNION CADENA ISO-083 12,7X4,88	UNION CHAINE ISO-083 12,7X4,88
54	149526	BICR.WASHER B DIN125-ST 6,4	ARAN.B DIN125-ST B.TRI. 6,4	RONDELLE B DIN125-ST BICR.6,4
55	166652	BIC.HEX SCREW DIN933-8.8 M8X15	TOR.EX.DIN933-8.8 B.TRI.M 8X15	VIS HEX DIN933-8.8 BICR. M8X15
56	149518	BICR.WASHER B DIN125-ST 8,4	ARAN.B DIN125-ST B.TRI. 8,4	RONDELLE.B DIN125-ST BICR.8,4
57	150193	BICR HEX NUT DIN 934-8 M10	TUER.EX.DIN934-8 B.TRI.M10	ECROU HEX DIN 934-8 BICR.M10
58	149690	BICR.EXT TOOT.WASH.DIN6798 M10	ARAN.DEN.EXT.B.TRI.DIN6798M10	RONDEL DEN EX.BICR.DIN6798 M10
59	146399	BICR HEX SCREW DIN933-8 M8X20	TOR.EX.DIN933-8.8 B.TRI.M 8X20	VIS HEX DIN933-8.8 BICR.M8X20
60	149708	BICR.EXT.TOOT.WASH.DIN6798 M8	ARAN.DEN.EXT.B.TRI.DIN6798M 8	RONDEL.DEN.EX.BICR.DIN6798 M8
61	146480	BICR.HEX SCREW DIN933-8 M10X20	TOR.EX.DIN933-8.8 B.TRI.M10X20	VIS HEX BICR.DIN933-8 M 10X20
62	149500	BICR.WASHER B DIN125-ST 10,5	ARAN.B DIN125-ST B.TRI.10,5	RONDELLE B DIN125-ST BICR.10,5
63	146332	HEX SCREW DIN 933 8,8 M6x30 TRIVALENT	TORNILLO HEXAGONAL DIN 933 8,8 M6x30 TRI	VIS HEXAGONALE DIN 933 8,8 M6x30 TRIVALE

Nº	REF	DENOMINATION	DENOMINACIÓN	DENOMINATION
65	165621	BIC HEX SCREW DIN933-8,8 M6X10	TOR.EX.DIN933-8.8 B.TRI.M 6X10	VIS HEX DIN933-8,8 BICR M6X10
66	149716	BICR.EXT TOOT.WASH.DIN6798 M6	ARAN.DEN.EXT.B.TRI.DIN6798M 6	RONDEL.DEN.EX.BICR DIN6798 M6
67	507525	SCREW RE.E.I.ISO7380 A2-70 M6X16	TOR.RE.E.I.ISO7380 A2-70 M6X16	VIS RE.E.I.ISO7380 A2-70 M6X16
68	144402	ALLEN SCREW DIN 912 M-8X30	TOR.ALLDIN912-8.8 B.TRI.M 8X30	VIS ALLEN DIN 912 M-8X30
69	150201	BICR.HEX NUT DIN 934-8 M-8	TUER.EX.DIN934-8 B.TRI.M 8	ECROU HEX.DIN 934-8 BICR.M-8
70	150227	BICR HEX NUT DIN934-8 M6	TUER.EX.DIN934-8 B.TRI.M 6	ECROU HEX DIN934-8 BICR.M6
71	146316	BICR.HEX SCREW DIN933-8 M-6X20	TOR.EX.DIN933-8.8 B.TRI.M 6X20	VIX HEX BICR.DIN933-8.8 M-6X20
72	145813	SCREW DIN85 INOX A2-70 M 6X12	TOR.PLA.DIN85 INOX A2-70 M6X12	VIS P.DIN85 INOX A2-70 M 6X12
73	149971	INOX. HEX. NUT DIN 934 M-6	TUER.EX.DIN934 INOX A2-70 M 6	ECROU HEX. INOX. DIN 934 M-6
74	281469	WASHER 47X9X0.4 PVC	ARANDELA 47X9X0.4 PVC	RONDELLE 47X9X0.4 PVC
75	146977	HEX SCREW 8G DIN 933 M-10X35	TOR.EX.DIN933-8.8 B.TRI.M10X35	VIS HEX 8G DIN 933 M-10X35
76	164350	SELF-LOCKING NUT DIN 985 8 M14 TRIVALENT	TUERCA AUTOBLOCANTE DIN 985 8 M14 TRIVAL	ECROU AUTOFREINE DIN 985 8 M14 TRIVALENT
77	149674	EXT.TOOTHED WASHER DIN6798 M14	ARAN.DEN.EXT.B.TRI.DIN6798M14	RONDELLE DENT.EXT.DIN6798 M14
78	149393	WASHER DIN 125B M14 ST TRIVALENT	ARANDELA DIN 125B M14 ST TRIVALENTE	RONDELLE DIN 125B M14 ST TRIVALENT
79	144196	ALLEN BUMP DIN913 M8X20	ESP.ALL.DIN913-10.9 M 8X20	GOUJON ALLEN DIN913 M8X20
81	558536	BEARING BOLT	BULON RODAMIENTO	BOULON ROULEMENTS
82	562033	INOX WASHER 28X20 2X2.5	ARANDELA 28X20.2X2.5 INOX	RONDELLE 28X20 2X2.5 INOX
83	558528	BEARING SLEEVE	CASQUILLO RODAMIENTO	FRETTE ROULEMENT
84	197293	SPECIAL BEARING	RODAMIENTO ESPECIAL	ROULEMENT SPECIAL
85	509422	FLEXIBLE RING I- 50 DIN 472	ANILLO ELASTICO I- 52 DIN 472	BAGUE ELASTIQUE I- 50 DIN 472
86	558544	SEPARATOR 45X21X16	SEPARADOR 45X20.5X14	SEPARATEUR 45X21X16
87	333294	SCREW T25 AR.18ESTR.M 6X15 INOX	TORNILLO ALOM.T25 M 6X15 INOX(ESPECIA	VIS T25 AR.18ESTR.M 6X15 INOX
	792309	KIT BEARING SET PB-32	KIT CONJUNTO RODAMIENTO PB-32	KIT ENSEMBLE ROULEMENT
		WITHOUT ILLUSTRATION	SIN ILUSTRACION	SANS ILLUSTRATION
570655		SYRINGE GREASE INTERFLON HTG	JERINGA GRASA INTERFLON HTG	SERINGUE GRAISSE INTERFLON HTG



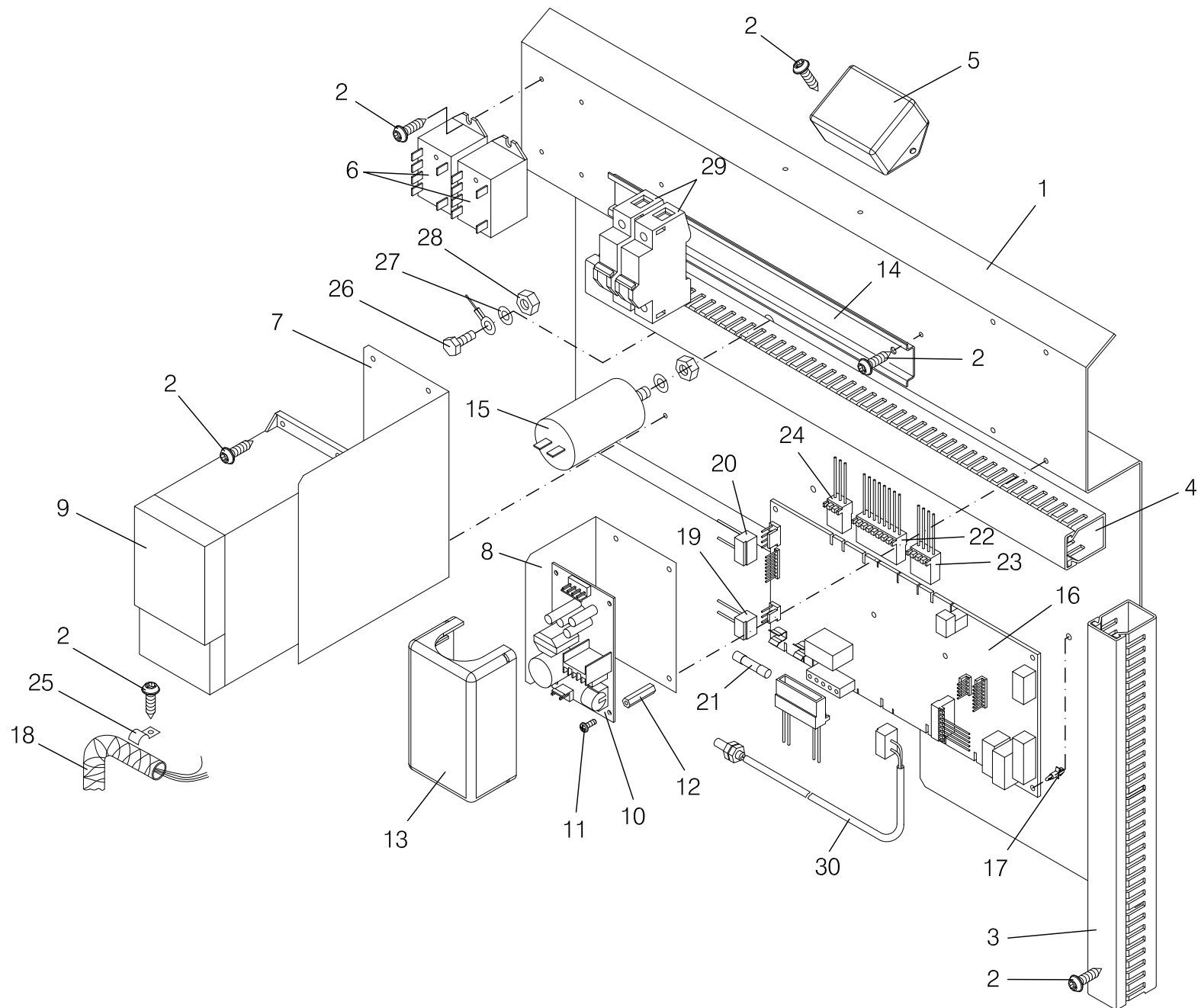
Nº	REF	DENOMINATION	DENOMINACIÓN	DENOMINATION
1	530303	TRANSMISSION PROTECTION	PROTECCION TRANSMISION	PROTECTION TRANSMISSION
2	530311	TRANSMISSION COVER	TAPA TRANSMISION	COUVERCLE TRANSMISSION
3	549022	TRANSMISSION ISOLATION	AISLANTE TRANSMISION	ISOLANT TRANSMISSION
4	277061	INSTALLATION BOX BRACKET	SOPORTE CAJA INSTALACION	SUPPORT BOITE INSTALLATION
5	536987	INSTALLATION BOX END-PIECE	TOPE CAJA INSTALACION	BUTEE BOX INSTALLATION
6	277376	INSTALLATION BOX BRACKET	SOPORTE CAJA INSTALACION	SUPPORT BOITE INSTALLATION
7	262618	BEARING BRACKET	SOPORTE RODAMIENTOS	SUPPORT ROULEMENTS
8	268144	SEPARATOR 1/2"X16,1X13	SEPARADOR 1/2"X16,1X13	SEPARATEUR 1/2"X16,1X13
9	142828	SPECIAL BEARING	RODAMIENTO ESPECIAL	ROULEMENT SPECIAL
10	264325	BEARING BOLT	BULON RODAMIENTOS	BOULON ROULEMENTS
11	301598	PIN DIN 6885-A 20X 5X 5	CHAVETA DIN 6885-A 20X 5X5	CLAVETTE DIN 6885-A 20X 5X 5
12	261974	CHAIN COVER	TAPA CADENA	COUVERCLE CHAINE
13	529594	MOTOR BRACKET	SOPORTE MOTOR	SUPPORT MOTEUR
14	537597	WORM GEARMOTOR *	MOTORREDUCTOR SINFIN 0.25KW *	MOTOREDUCTEUR A VIS *
	537605	WORM GEARMOTOR * (HIGH SPEED)	MOTORREDUCTOR SINFIN 0.45KW CSA/UL * (ALTA VELOCIDAD)	MOTOREDUCTEUR A VIS * (HAUTE VITESSE)
15	527606	GEAR-MOTOR SHAFT	EJE MOTORREDUCTOR	AXE MOTEUR-REDUCTEUR
16	317487	PIN DIN 6885-A 50X 8X 7	CHAVETA DIN 6885-A 50X 8X7	CLAVETE DIN 6885-A 50X 8X 7
17	132480	PINION 12,7 Z20	PIÑON RUEDA LIBRE 12,7 Z20 *	PIGNON 12,7 Z20
18	537001	PINION BUSH	MANGUITO PIÑON	MANCHON PIGNON
19	535476	MAGNET BRACKET	SOPORTE IMAN	SUPPORT AIMANT
20	544940	MAGNET ø20x6 NEODYMIUM	IMAN ø20x6 NEODIMIO	AIMANT ø20X6 NÉODYME
21	535492	ROTATION MAGNETIC SENSOR BRACKET	SOPORTE SENSOR MAGNETICO ROTACION	SUPPORT SENSEUR MAGNET.ROTATION
22	547018	ROTATION DETECTOR PB-32	DETECTOR DE GIRO PB-32	DETECTEUR DE ROTATION PB-32
23	146399	BICR HEX SCREW DIN933-8 M8X20	TOR.EX.DIN933-8.8 B.TRI.M 8X20	VIS HEX DIN933-8.8 BICR.M8X20
24	149518	BICR.WASHER B DIN125-ST 8,4	ARAN.B DIN125-ST B.TRI. 8,4	RONDELLE.B DIN125-ST BICR.8,4
25	150201	BICR.HEX NUT DIN 934-8 M-8	TUER.EX.DIN934-8 B.TRI.M 8	ECROU HEX.DIN 934-8 BICR.M-8
26	166652	BIC.HEX SCREW DIN933-8.8 M8X15	TOR.EX.DIN933-8.8 B.TRI.M 8X15	VIS HEX DIN933-8.8 BICR. M8X15
27	258822	WASHER 19X8.5X4	ARANDELA 19X8.5X4 TRIVALEN.	RONDELLE 19X8.5X4

Nº	REF	DENOMINATION	DENOMINACIÓN	DENOMINATION
28	192849	BIC.HEX SCREW DIN933-8 M-8X25	TOR.EX.DIN933-8.8 B.TRI.M 8X25	VIS HEX.DIN933-8,8 BICR.M-8X25
29	111278	WASHER 35X9X4	ARANDELA 35X9X4 TRIVALEN.	RONDELLE 35X9X4
30	147629	COUNTERSUNK SCREW DIN 963 4,8 M4x13 TRIV	TORNILLO AVELLANADO DIN 963 4,8 M4x13 TR	VIS FRAISEE DIN 963 4,8 M4x13 TRIVALENT
31	132043	SELF-LOCKING NUT DIN985-8 B.TRI.M 4	TUER.AUTOBL.DIN985-8 B.TRI.M 4	ECROU AUTOBLOCANT DIN985-8 B.TRI.M 4
32	144014	ALLEN BUMP DIN913 M5X10	ESP.ALL.DIN913-10.9 M 5X10	GOUJON ALLEN DIN913 M5X10
33	146258	BIC.HEX SCREW DIN933-4.8 M4X10	TOR.EX.DIN933-4.8 B.TRI.M 4X10	VIS HEX DIN933-4.8 BICR.M 4X10
34	149328	INOX A2 WASHER DIN 125 4,3	ARAN. DIN125 INOX A2 4,3	RONDELLE INOX A2 DIN 125 4,3
35	150185	BICR.HEX.NUT DIN934-8 M4	TUER.EX.DIN934-8 B.TRI.M 4	ECROU HEX.DIN934-8 BICR.M4
36	149385	BICR.WASHER B DIN125-ST 17	ARAN.B DIN125-ST B.TRI.17	RONDELLE B DIN125-ST BICR.17
37	173260	SELF-LOCKING NUT DIN985-8B.TRI.M16	TUER.AUTOBL.DIN985-8B.TRI.M16	ECROU AUTOBLOCANT DIN985-8B.TRI.M16
38	164285	SELF-LOCKING NUT DIN985-8 B.TRI.M8	TUER.AUTOBL.DIN985-8 B.TRI.M8	ECROU AUTOBLOCANT DIN985-8 B.TRI.M8
39	192856	HEX SCREW 8G DIN 933 M 6X 25	TOR.EX.DIN933-8.8 B.TRI.M 6X25	VIS HEX.8G DIN 933 M 6X 25
40	149526	BICR.WASHER B DIN125-ST 6,4	ARAN.B DIN125-ST B.TRI. 6,4	RONDELLE B DIN125-ST BICR.6,4
41	176834	SELF-LOCKING NUT DIN985-8 B.TRI.M6	TUER.AUTOBL.DIN985-8 B.TRI.M6	ECROU AUTOBLOCANT DIN985-8 B.TRI.M6
42	146233	BICR.HEX SCREW DIN933-8 M6X15	TOR.EX.DIN933-8.8 B.TRI.M 6X15	VIS HEX DIN933-8.8 BICR.M6X15
43	165621	BIC HEX SCREW DIN933-8,8 M6X10	TOR.EX.DIN933-8.8 B.TRI.M 6X10	VIS HEX DIN933-8,8 BICR M6X10
44	165613	CAGED NUT M-6 2,6-3,5	TUER.ENJ.M6 2,6-3,5 R.310009-5	*ECROU ENCAGE M-6 2,6-3,5
45	183400	PLATE SCREW ST-4, 20 P.F. C/AL.T25	TORNILLO CHAPA ST-4 (ESPECIAL)*	VIS PLAQUE ST-4, 20 P.F. C/AL.T25
46	195552	PLATE SCREW DIN7971 8X3/4"	TOR.CHAPA CILI.DIN7971 8X3/4"	VIS DE PLAQUE DIN7971 8X3/4"
47	222166	WASHER 60X4.5X1	ARANDELA 60X4.5X1	RONDELLE 60X4.5X1
48	146480	BICR.HEX SCREW DIN933-8 M10X20	TOR.EX.DIN933-8.8 B.TRI.M10X20	VIS HEX BICR.DIN933-8 M 10X20
49	281469	WASHER 47X9X0.4 PVC	ARANDELA 47X9X0.4 PVC	RONDELLE 47X9X0.4 PVC
50	540922	AMPLIFIER M20-M25 BRASS	AMPLIFICADOR M20-M25 LATON	AMPLIFICATEUR M20-M25 LAITON
51	356055	STUFFING-BOX EXAD. CLAMP 82505 M25	PRENSAE.EXAD.BRIDA 82505 M25	PRESSE-ETOUPE EXAD.BRIDE 82505 M25
52	328245	PAN HEAD SCREW T25 AR.18ESTR.M 6X10	TORNILLO C.ALOM.T25 M 6X10 (ESPECIAL)*	VIS À TÊTE PAN T25 AR.18ESTR.M 6X10



Nº	REF	DENOMINATION	DENOMINACIÓN	DENOMINATION
1	533125	PB-32 FOLDER KEYBOARD	TECLADO PLANCHADORA PB-32	CLAVIER PLIEUSE PB-32
2	532390	CONTROL PANEL BRACKET SET	CONJUNTO SOPORTE PANEL MANDOS	ENSEMBLE SUPPORT PANNEAU COMMANDES
3	534172	MICROPROCESSOR BOARD PB-32/A	PLACA MICROP. PB-32/A	PLAQUE MICROPROCESSEUR PB-32/A
4	565895	COMMUNICATION BOARD COM-C * (WITH COM)	PLACA COMUNICACIONES COM-C * (PARA COM)	PLAQUE COMMUNICATIONS COM-C/609164 (AVEC COM)
5	536631	TEMP.SONDE ELEC.INST.	INST.ELEC. SONDAS TEMP.	DETECTEUR DE ROTATION PB-32
6	322768	MICRO BOARD SEPARATOR	SEPARADOR PLACA MICRO	SEPARATEUR PLAQUE MICRO
7	338038	MICRO BOARD SPACER	SEPARADOR PLACA MICRO	SEPARATEUR PLAQUE MICRO
8	149476	BICR.WASHER B DIN125-ST 4,3	ARAN.B DIN125-ST B.TRI. 4,3	RONDELLE B DIN125-ST BICR.4,3
9	150185	BICR.HEX.NUT DIN934-8 M4	TUER.EX.DIN934-8 B.TRI.M 4	ECROU HEX.DIN934-8 BICR.M4
10	332809	CIRCUIT BRACKET LCBS-4-7-01 (WITH COM)	SOPORTE CIRCUITO LCBS-4-7-01 (PARA COM)	SUPPORT CIRCUIT LCBS-4-7-01 (AVEC COM)
11	549063	GROUND WIRE	CABLE TIERRA	PRISE DE TERRE
12	191254	ALLEN SCREW DIN 912 M 4X 15	TOR.ALDDIN912-8.8 B.TRI.M 4X15	VIS ALLEN DIN 912 M 4X 15
13	149732	BICR.EXT TOOT.WASH DIN6798 M4	ARAN.DEN.EXT.B.TRI.DIN6798M 4	RONDEL.DEN.EX.BICR.DIN6798 M4
14	149476	BICR.WASHER B DIN125-ST 4,3	ARAN.B DIN125-ST B.TRI. 4,3	RONDELLE B DIN125-ST BICR.4,3
15	150185	BICR.HEX.NUT DIN934-8 M4	TUER.EX.DIN934-8 B.TRI.M 4	ECROU HEX.DIN934-8 BICR.M4
16	350694	ALUMINIUM CLAMP AL4	ABRAZADERA ALUMINIO AL4	BRIDE ALUMINIUM AL4
17	149328	INOX A2 WASHER DIN 125 4,3	ARAN. DIN125 INOX A2 4,3	RONDELLE INOX A2 DIN 125 4,3

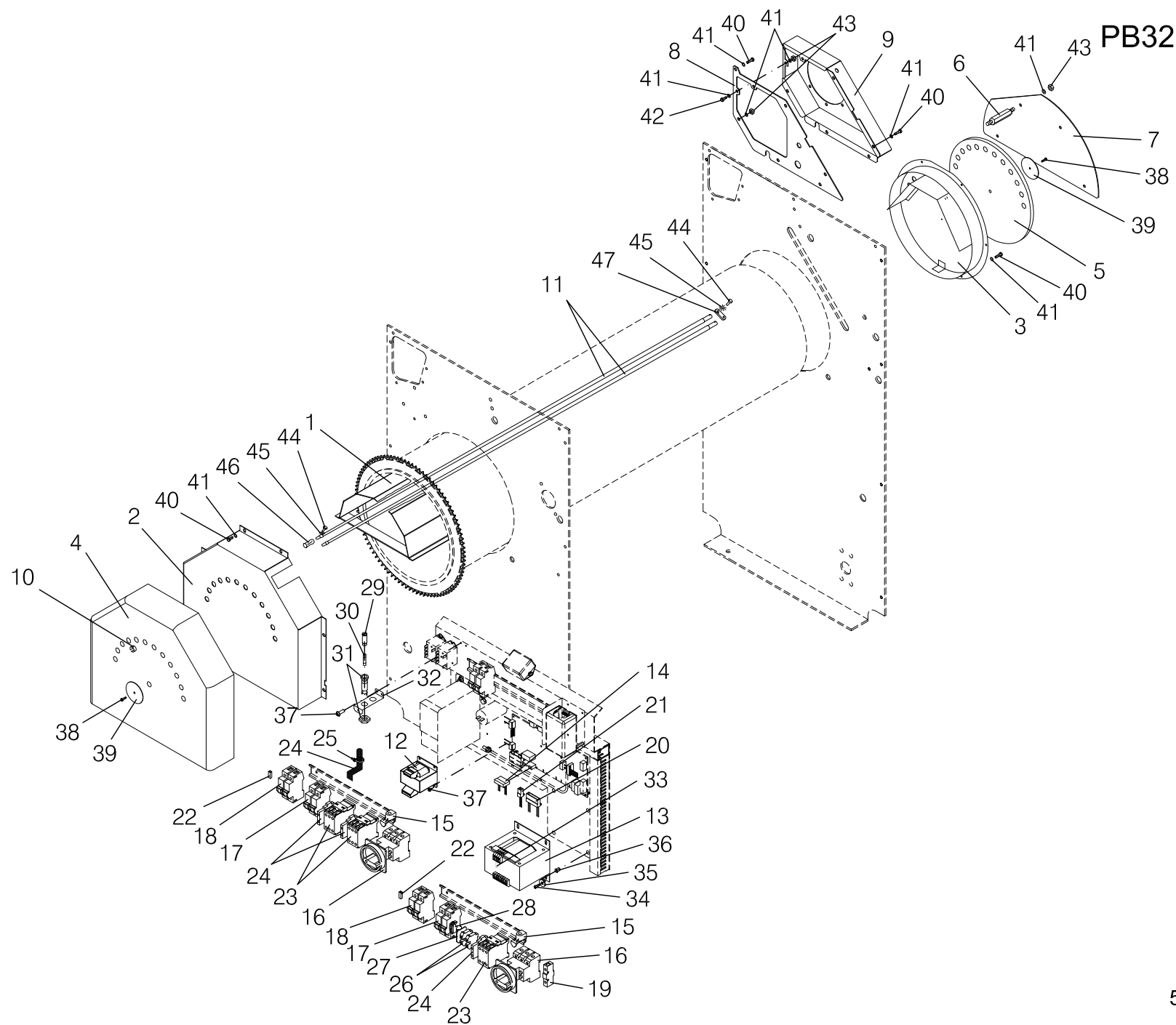
N°	REF	DENOMINATION	DENOMINACIÓN	DENOMINATION
		FROM MACHINE Nr: 2.175.509 2.205.053	A PARTIR DE LA MAQUINA No : 2.175.509 2.205.053	A PARTIR DE LA MACHINE NR: 2.175.509 2.205.053
3	615138	MICROPROCESSOR BOARD PB-32/A	PLACA MICROP. PB-32/A	PLAQUE MICROPROCESSEUR PB-32/A



Nº	REF	DENOMINATION	DENOMINACIÓN	DENOMINATION
1	530170	INSTALLATION BOX PLATE	PLACA CAJA INSTALACION	PLAQUE BOITE INSTALLATION
2	183400	PLATE SCREW ST-4, 20 P.F. C/AL.T25	TORNILLO CHAPA ST-4 (ESPECIAL)*	VIS PLAQUE ST-4, 20 P.F. C/AL.T25
3	142430	CHANNEL 40X30 (L=320 MM)	CANAL 60X30 (L=320 MM)	CANAL 60X30 (L=320 MM)
4	142430	CHANNEL 40X30 (L=480 MM)	CANAL 60X30 (L=480 MM)	CANAL 60X30 (L=480 MM)
5	551549	FILTER RFI TIPO FL-4Z	FILTRO DE RED RFI TIPO FL-4Z	FILTRE RFI TIPO FL-4Z
6	322701	RELAY 12VDC	RELE 12VDC*	RELAIS 12VDC
7	551614	CEM SCREEN VLT	PANTALLA CEM VLT	ECRAN CEM VLT
8	551622	CEM SCREEN PS25	PANTALLA CEM PS25	ECRAN CEM PS25
9	535856	FREQ.INVERTER VLT FC-051 0.37kW	VARIADOR VLT FC-051 0.37kW *	VARIATEUR FREQ. VLT FC-051 0.37kW
10	332718	POWER SOURCE MW PS-25-12	FUENTE ALIMENT.MW PS-25-12	FONT ALIMENT.MW PS-25-12
11	322693	SCREW PT KN35X10 WN1412	TORNILLO PT KN35X10 WN1412 (ESPECIAL)	VIS PT KN35X10 WN1412
12	322685	SEPARATOR HEX.HS6-8	SEPARADOR EXAGONAL HS6-8	SEPARATEUR HEX. HS6-8
13	326843	MICROPROCESSOR PLATE COVER	TAPA PLACA MICROPROCESADOR	COUVERCLE PLAQUE MICROPROSSEUR
14	122812	CONTACTORS FIXING PROFILE	PERFIL FIJACION CONTACTORES	PROFILE FIXATIONS CONTACTEURS
15	550509	CAPACITOR 20MF	CONDENSADOR 20MF *	CONDENSATEUR 20MF
16	534156	INTELI LABEL E/S-21/A	PLACA INTELI E/S-21/A	PLAQUE INTELI E/S-21/A
17	332809	CIRCUIT BRACKET LCBS-4-7-01	SOPORTE CIRCUITO LCBS-4-7-01	SUPPORT CIRCUIT LCBS-4-7-01
18	536649	MOTOR ELEC.INSTAL. PB-32	INST. ELEC. MOTOR PB-32	INSTAL. ELEC. MOTEUR PB-32
19	536607	PLUG ELEC.INST. X14	INST.ELEC.CONECTORA X14	INST.ELEC. CONNECTEUR X14
20	533273	PLUG ELEC.INST. X9	INST.ELEC.CONECTORA X9	INST.ELEC. CONNECTEUR X9
21	321125	FUSE SPT 1 A	CART.FUSIB.SPT 0001.2524 1 A*	CARTOUCHE FUS. SPT 1 A
22	536599	PLUG ELEC.INST. X10-X12	INST.ELEC.CONECTORA X10-X12	INST.ELEC. CONNECTEUR X10-X12
23	536623	FINGER PROTEC. ELEC.INSTAL.	INST.ELEC.PROTECCION MANOS	INSTAL.ÉLEC.PROTEC.DOIGTS
24	536573	PLUG ELEC.INST. X1-X2	INST.ELEC.CONECTORA X1-X2	INST.ELEC. CONNECTEUR X1-X2
25	521443	CEM S-6 CLAMP	ABRAZADERA CEM S-6	BRIDE CEM S-6
26	144295	BICR.SCREW ALLEN912-8.8 M 5X25	TOR.ALLDIN912-8.8 B.TRI.M 5X25	VIS ALLDIN912-8.8 BICR.M 5X 25
27	149724	BICR EXT.TOOT.WASH.DIN6798 M5	ARAN.DEN.EXT.B.TRI.DIN6798M 5	RONDEL DEN.EX.BICR.DIN6798 M5

N°	REF	DENOMINATION	DENOMINACIÓN	DENOMINATION
28	150177	BICR HEX NUT DIN934-8 M5	TUER.EX.DIN934-8 B.TRI.M 5	ECROU HEX DIN934-8 BIC.M5
29	544403	AUTOMATIC SWITCH 3A	INTERRUPTOR AUT. 3A CURVA D*	INTERRUPTEUR AUT.3A
30	547018	ROTATION DETECTOR PB-32	DETECTOR DE GIRO PB-32	DETECTEUR DE ROTATION PB-32

N°	REF	DENOMINATION	DENOMINACIÓN	DENOMINATION
		FROM MACHINE Nr: 2.175.509 2.205.053	A PARTIR DE LA MAQUINA No : 2.175.509 2.205.053	A PARTIR DE LA MACHINE NR: 2.175.509 2.205.053
18	615021	MOTOR ELEC.INSTAL. PB-32	INST. ELEC. MOTOR PB-32	INSTAL. ELEC. MOTEUR PB-32



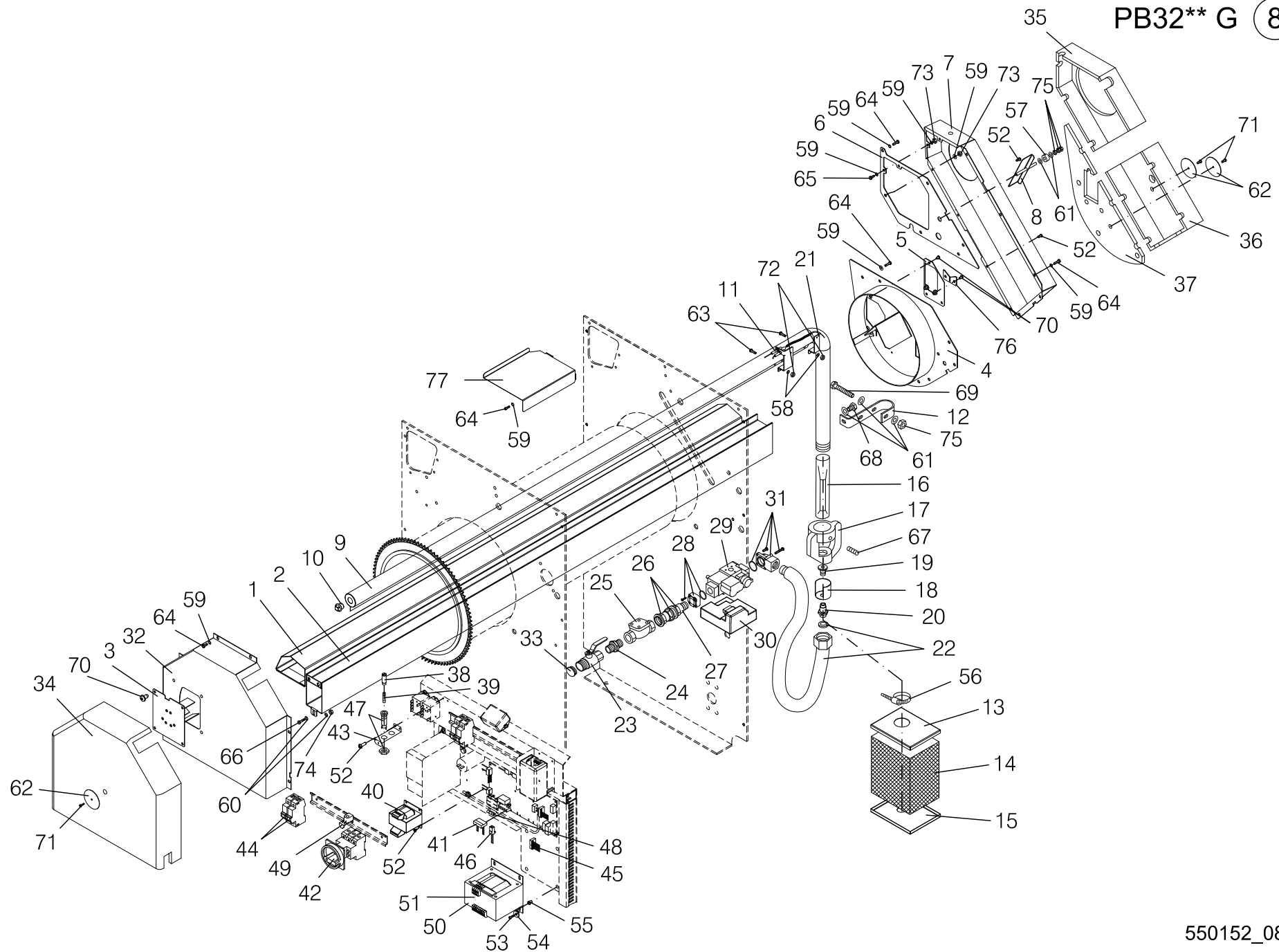
PB32** E 7

Nº	REF	DENOMINATION	DENOMINACIÓN	DENOMINATION
1	532465	HEATER BRACKET SET (FOR 3221)	CONJUNTO SOPORTE RESISTENCIAS (PARA 3221)	ENSEMBLE SUPPORT RESISTANCES (POUR 3221)
	539163	HEATER BRACKET SET (FOR 3215)	CONJUNTO SOPORTE RESISTENCIAS (PARA 3215)	ENSEMBLE SUPPORT RESISTANCES (POUR 3215)
2	531301	ROLL LEFT COVER	TAPA IZQUIERDA RODILLO	COUVERCLE GAUCHE ROULEAU
3	531335	ROLL RIGHT COVER	TAPA DERECHA RODILLO	COUVERCLE DROIT ROULEAU
4	549030	LEFT COVER ISOLATION	AISLANTE TAPA IZQUIERDA	ISOLANT COUVERCLE GAUCHE
5	549048	RIGHT COVER ISOLATION	AISLANTE TAPA DERECHA	ISOLANT COUVERCLE DROITE
6	272146	HEATER COVER SCREW	TORNILLO TAPA CALEFACTORES	VIS COUVERCLE RESISTANCES
7	531285	HEATER COVER	TAPA CALEFACTORES	COUVERCLE RESISTANCES
8	539676	EXTRACTOR BOX BASE	BASE CAJA ASPIRACION	BASE BOITE EXTRACTEUR
9	535211	EXTRACTOR BOX	CAJA ASPIRACION	BOITE EXTRACTEUR
10	196196	CLAMP 10	ABRAZ.DE MUELLE DE 10 201406-8	BRIDE 10
11	534974	HEATER 104V 1935W (FOR 3221) (FOR 200V-208V)	CALEFACTOR 104V 1935W (PARA 3221) (PARA 200V-208V)	RESISTANCE 104V 1935W (POUR 3221) (POUR 200V-208V)
	534982	HEATER 104V 1375W (FOR 3215) (FOR 200V-208V)	CALEFACTOR 104V 1375W (PARA 3215) (PARA 200V-208V)	RESISTANCE 104V 1375W (POUR 3215) (POUR 200V-208V)
	533026	HEATER 115V 1935W (FOR 3221) (FOR 220V-230V-380V-400V)	CALEFACTOR 115V 1935W (PARA 3221) (PARA 220V-230V-380V-400V)	RESISTANCE 115V 1935W (POUR 3221) (POUR 220V-230V-380V-400V)
	534990	HEATER 115V 1375W (FOR 3215) (FOR 220V-230V-380V-400V)	CALEFACTOR 115V 1375W (PARA 3215) (PARA 220V-230V-380V-400V)	RESISTANCE 115V 1375W (POUR 3215) (POUR 220V-230V-380V-400V)
	533042	HEATER 120V 1935W (FOR 3221) (FOR (208+240)V-240V-415V)	CALEFACTOR 120V 1935W UL (PARA 3221) (PARA (208+240)V-240V-415V)	RESISTANCE 120V 1935W (POUR 3221) (POUR (208+240)V-240V-415V)
	535005	HEATER 120V 1375W (FOR 3215) (FOR (208+240)V-240V-415V)	CALEFACTOR 120V 1375W UL (PARA 3215) (PARA (208+240)V-240V-415V)	RESISTANCE 120V 1375W (POUR 3215) (POUR (208+240)V-240V-415V)
12	540286	TRANSFORMER 100VA 2X115V_2 * (FOR 200V-208V-220V-230V-240V) (FOR (208+240)V)	TRANSFORMADOR 100VA 2X115V_2 * (PARA 200V-208V-220V-230V-240V) (PARA (208+240)V)	TRANSFORMATEUR 100VA 2X115V_2 * (POUR 200V-208V-220V-230V-240V) (POUR (208+240)V)
	540286	TRANSFORMER 100VA 2X115V_2 * (FOR 380V-400V-415V)	TRANSFORMADOR 100VA 2X115V_2 * (PARA 380V-400V-415V)	TRANSFORMATEUR 100VA 2X115V_2 * (POUR 380V-400V-415V)

N°	REF	DENOMINATION	DENOMINACIÓN	DENOMINATION
13	508929	TRANSFORMER 1kVA 2X115V * (FOR 380V-400V-415V) (WITHOUT NEUTRAL)	TRANSFORMADOR 1KVA 2X115V * (PARA 380V-400V-415V) (SIN NEUTRO)	TRANSFORMATEUR 1kVA 2X115V * (POUR 380V-400V-415V) (SANS NEUTRE)
14	533265	X8 PLUG ELEC.INST. (FOR 200V-208V-220V-230V-240V) (FOR (208÷240)V)	INST.ELEC.CONECTORA X8 (PARA 200V-208V-220V-230V-240V) (PARA (208÷240)V)	INST.ELEC. CONNECTEUR X8 (POUR 200V-208V-220V-230V-240V) (POUR (208÷240)V)
	533265	X8 PLUG ELEC.INST. (FOR 380V-400V-415V)	INST.ELEC.CONECTORA X8 (PARA 380V-400V-415V)	INST.ELEC. CONNECTEUR X8 (POUR 380V-400V-415V)
	555862	PLUG ELEC.INST. X8_NON (FOR 380V-400V-415V) (WITHOUT NEUTRAL)	INST.ELEC.CONECTORA X8_NON (PARA 380V-400V-415V) (SIN NEUTRO)	INST.ELEC. CONNECTEUR X8_NON (POUR 380V-400V-415V) (SANS NEUTRE)
15	302828	ACCESSOR.H-P3	CUBREBORNES H-P3 MOELLER	ACCESOR.H-P3
16	300384	PAQUET.SWITCH P3-63/V/SVB	INTERRUPT.GENERAL P3-63/V/SVB*	INTERRUPTEUR PAQUET.P3-63/V/SVB
17	518191	AUTOMATIC SWITCH 4A (FOR 200V-208V-220V-230V-240V) (FOR (208÷240)V)	INTERRUPTOR AUT. 4A CURVA D* (PARA 200V-208V-220V-230V-240V) (PARA (208÷240)V)	INTERRUPTEUR AUT. 4A (POUR 200V-208V-220V-230V-240V) (POUR (208÷240)V)
	518191	AUTOMATIC SWITCH 4A (FOR 380V-400V-415V)	INTERRUPTOR AUT. 4A CURVA D* (PARA 380V-400V-415V)	INTERRUPTEUR AUT. 4A (POUR 380V-400V-415V)
	518191	AUTOMATIC SWITCH 4A (FOR 380V-400V-415V) (WITHOUT NEUTRAL)	INTERRUPTOR AUT. 4A CURVA D* (PARA 380V-400V-415V) (SIN NEUTRO)	INTERRUPTEUR AUT. 4A (POUR 380V-400V-415V) (SANS NEUTRE)
18	544411	AUTOMATIC SWITCH 0,5A (FOR 200V-208V-220V-230V-240V) (FOR (208÷240)V)	INTERRUPTOR AUT. 0,5A CURVA D* (PARA 200V-208V-220V-230V-240V) (PARA (208÷240)V)	INTERRUPTEUR AUT.0,5A (POUR 200V-208V-220V-230V-240V) (POUR (208÷240)V)
	544411	AUTOMATIC SWITCH 0,5A (FOR 380V-400V-415V)	INTERRUPTOR AUT. 0,5A CURVA D* (PARA 380V-400V-415V)	INTERRUPTEUR AUT.0,5A (POUR 380V-400V-415V)
19	198879	SECTION.NEUTRE N-P1Z (FOR 380V-400V-415V)	NEUTRO SECCIONABLE N-P1Z (PARA 380V-400V-415V)	NEUTRE SECCON.N-P1Z (POUR 380V-400V-415V)
20	546838	HEATING RELAY ELEC.INST.	INST.ELEC. RELES CALEFACCION	INST.ELEC. RELAIS CHAUFFAGE
21	536581	PLUG ELEC.INST. X7	INST.ELEC.CONECTORA X7	INST.ELEC. CONNECTEUR X7
22	135442	CONNECTION-BOARD MAI E-ST-1	REGLETA PLANA 12ELEM. REF.PA21	REGLETTE MAI E-ST-1 12ELE
23	326223	CONTACTOR 3RT10 26-1AL200	CONTACTOR 3RT10 26-1AL200	CONTACTEUR 3RT10 26-1AL200
24	536664	HEATER ELEC.INST.	INST.ELEC. CALEFACTORES	INST.ELEC. CHAUFFAGE
25	140525	CLAMP 2244-0	BRIDA UNEX 2244-0 *	BRIDE 2244-0
26	312314	TERMINAL WDU16 BEIGE 102040 (FOR 380V-400V-415V) (FOR 380V-400V-415V) (WITHOUT NEUTRAL)	BORNE WDU16 BEIGE 102040 (PARA 380V-400V-415V) (PARA 380V-400V-415V) (SIN NEUTRO)	BORNE WDU16 BEIGE 102040 (POUR 380V-400V-415V) (POUR 380V-400V-415V) (SANS NEUTRE)

Nº	REF	DENOMINATION	DENOMINACIÓN	DENOMINATION
27	312330	BORNE COVER WAP16-35 (FOR 380V-400V-415V) (FOR 380V-400V-415V) (WITHOUT NEUTRAL)	TAPA BORNE WAP16-35 (PARA 380V-400V-415V) (PARA 380V-400V-415V) (SIN NEUTRO)	COUVERCLE BORNE WAP16-35 (POUR 380V-400V-415V) (POUR 380V-400V-415V) (SANS NEUTRE)
28	142331	FIXING CLAMP (FOR 380V-400V-415V) (FOR 380V-400V-415V) (WITHOUT NEUTRAL)	TOPE FIJACION PARA RAILES * (PARA 380V-400V-415V) (PARA 380V-400V-415V) (SIN NEUTRO)	BRIDE FIXATION (POUR 380V-400V-415V) (POUR 380V-400V-415V) (SANS NEUTRE)
29	137661	BAYONET HEAD (FOR 380V-400V-415V) (WITHOUT NEUTRAL)	CABEZA BAYONETA FEK.031.1613 (PARA 380V-400V-415V) (SIN NEUTRO)	TETE BAYONETTE (POUR 380V-400V-415V) (SANS NEUTRE)
30	326371	FUSE FST 8A (FOR 380V-400V-415V) (WITHOUT NEUTRAL)	CART.FUSIB.FST 0034.5244 8 A* (PARA 380V-400V-415V) (SIN NEUTRO)	CARTOUCHE FUSIBLE FST 8A (POUR 380V-400V-415V) (SANS NEUTRE)
31	160119	FUSE HOLDER REF.FEC 031 1631 (FOR 380V-400V-415V) (WITHOUT NEUTRAL)	PORTAFUSIBLES REF.FEC.031.1631 (PARA 380V-400V-415V) (SIN NEUTRO)	PORTE-FUSIBLE REF.FEC 031 1631 (POUR 380V-400V-415V) (SANS NEUTRE)
32	542654	FUSE BRACKET (FOR 380V-400V-415V) (WITHOUT NEUTRAL)	SOPORTE FUSIBLES (PARA 380V-400V-415V) (SIN NEUTRO)	SUPPORT FUSIBLES (POUR 380V-400V-415V) (SANS NEUTRE)
33	344366	HEATER BRIDGE WIRE (FOR 380V-400V-415V) (WITHOUT NEUTRAL)	CABLE PUENTE CALEFACTOR (PARA 380V-400V-415V) (SIN NEUTRO)	CABLE PONT RESISTANCE (POUR 380V-400V-415V) (SANS NEUTRE)
34	144279	ALLEN SCREW DIN 912 M-5X15 (FOR 380V-400V-415V) (WITHOUT NEUTRAL)	TOR.ALLDIN912-8.8 B.TRI.M 5X15 (PARA 380V-400V-415V) (SIN NEUTRO)	VIS ALLEN DIN 912 M-5X15 (POUR 380V-400V-415V) (SANS NEUTRE)
35	153205	WASHER 20X7X2 (FOR 380V-400V-415V) (WITHOUT NEUTRAL)	ARANDELA 20X7X2 TRIVALEN. (PARA 380V-400V-415V) (SIN NEUTRO)	RONDELLE 20X7X2 (POUR 380V-400V-415V) (SANS NEUTRE)
36	183541	CYLIN. NUT M5 R-310077-3 (FOR 380V-400V-415V) (WITHOUT NEUTRAL)	TUER.ENJ.M5 CILINDR.R-310077-3 (PARA 380V-400V-415V) (SIN NEUTRO)	ECROU M5 CYLIN. R-310077-3 (POUR 380V-400V-415V) (SANS NEUTRE)
37	183400	PLATE SCREW ST-4, 20 P.F. C/AL.T25	TORNILLO CHAPA ST-4 (ESPECIAL)*	VIS PLAQUE ST-4, 20 P.F. C/AL.T25
38	195552	PLATE SCREW DIN7971 8X3/4"	TOR.CHAPA CILI.DIN7971 8X3/4"	VIS DE PLAQUE DIN7971 8X3/4"
39	222166	WASHER 60X4.5X1	ARANDELA 60X4.5X1	RONDELLE 60X4.5X1
40	165621	BIC HEX SCREW DIN933-8,8 M6X10	TOR.EX.DIN933-8.8 B.TRI.M 6X10	VIS HEX DIN933-8,8 BICR M6X10
41	149526	BICR.WASHER B DIN125-ST 6,4	ARAN.B DIN125-ST B.TRI. 6,4	RONDELLE B DIN125-ST BICR.6,4
42	146233	BICR.HEX SCREW DIN933-8 M6X15	TOR.EX.DIN933-8.8 B.TRI.M 6X15	VIS HEX DIN933-8.8 BICR.M6X15
43	150227	BICR HEX NUT DIN934-8 M6	TUER.EX.DIN934-8 B.TRI.M 6	ECROU HEX DIN934-8 BICR.M6

N°	REF	DENOMINATION	DENOMINACIÓN	DENOMINATION
44	328229	SCREW ALO.T25 AR.18ESTR.M 4X10	TORNILLO ALOM.T25 M 4X10 (ESPECIAL)*	VIS ALOM.T25 AR.18ESTR.M 4X10
45	149732	BICR.EXT TOOT.WASH DIN6798 M4	ARAN.DEN.EXT.B.TRI.DIN6798M 4	RONDEL.DEN.EX.BICR.DIN6798 M4
46	222315	HEATER PROTECTOR	PROTECTOR CALEFACTOR	PROTECTEUR RESISTANCE
47	281287	HEATER BRIDGE	PUENTE CALEFACTORES	PONT RESISTANCES



Nº	REF	DENOMINATION	DENOMINACIÓN	DENOMINATION
1	530204	STEAM DUCT (FOR 3221)	CONDUCTO HUMOS (PARA 3221)	CONDUIT BUEES (POUR 3221)
	538827	STEAM DUCT (FOR 3215)	CONDUCTO HUMOS (PARA 3215)	CONDUIT BUEES (POUR 3215)
2	530279	STEAMS INTAKE HOSE (FOR 3221)	TUBO ASPIRACION GASES (PARA 3221)	TUBE ASPIRATION BUEES (POUR 3221)
	528539	STEAMS INTAKE HOSE (FOR 3215)	TUBO ASPIRACION GASES (PARA 3215)	TUBE ASPIRATION BUEES (POUR 3215)
3	535393	BURNER BRACKET SET (ATMOSPHERIC BURNER)	CONJUNTO SOPORTE QUEMADOR (PARA QUEMADOR ATMOSFERICO)	ENSEMBLE SUPPORT BRULEUR (POUR BRÔLEUR ATMOSPHERIQUE)
4	530576	ROLL RIGHT PLATE	TAPA DERECHA RODILLO	COUVERCLE DROIT ROULEAU
5	531350	BURNER COVER (ATMOSPHERIC BURNER)	TAPA QUEMADOR (PARA QUEMADOR ATMOSFERICO)	COUVERCLE BRULEUR- (POUR BRÔLEUR ATMOSPHERIQUE)
6	539676	EXTRACTOR BOX BASE	BASE CAJA ASPIRACION	BASE BOITE EXTRACTEUR
7	530857	EXTRACTOR BOX	CAJA ASPIRACION	BOITE EXTRACTEUR
8	536557	EXTRACTOR CONTROL	REGISTRO ASPIRACION	CONTROLE EXTRACTEUR
9	527895	BURNER (FOR 3221) (ATMOSPHERIC BURNER)	QUEMADOR (PARA 3221) (PARA QUEMADOR ATMOSFERICO)	BRULEUR (POUR 3221) (POUR BRÔLEUR ATMOSPHERIQUE)
	527887	BURNER (FOR 3215) (ATMOSPHERIC BURNER)	QUEMADOR (PARA 3215) (PARA QUEMADOR ATMOSFERICO)	BRULEUR (POUR 3215) (POUR BRÔLEUR ATMOSPHERIQUE)
10	129825	ELBOW FIG. 290 1/2" GALV. (FOR MACHINES GAS HEATING ATMOS. BURNER)	FIGURA 290 DE 1/2" GALV. (PARA MOD. CAL. GAS QUEMAD. ATMOSFERICO)	COUDE FIG. 290 1/2" GALV. (POUR MACHINES CHAUF.GAZ BRULEUR ATMOS.)
11	548438	ATMOSPHER.GAS BURNER ELECTRODES (ATMOSPHERIC BURNER)	ELECTRODOS QUEMADOR GA (PARA QUEMADOR ATMOSFERICO)	ELECTRODES BURNER GAZ ATMOSPHER. (POUR BRÔLEUR ATMOSPHERIQUE)
12	546903	BURNER CLAMP (ATMOSPHERIC BURNER)	BRIDA QUEMADOR (PARA QUEMADOR ATMOSFERICO)	BRIDE BRULEUR (POUR BRÔLEUR ATMOSPHERIQUE)
13	281543	FILTER COVER (FOR MACHINES GAS HEATING ATMOS. BURNER)	TAPA FILTRO (PARA MOD. CAL. GAS QUEMAD. ATMOSFERICO)	COUVERCLE FILTRE (POUR MACHINES CHAUF.GAZ BRULEUR ATMOS.)
14	281527	FILTER AIR (FOR MACHINES GAS HEATING ATMOS. BURNER)	FILTRO AIRE (PARA MOD. CAL. GAS QUEMAD. ATMOSFERICO)	FILTRE AIR (POUR MACHINES CHAUF.GAZ BRULEUR ATMOS.)
15	281550	FILTER COVER (FOR MACHINES GAS HEATING ATMOS. BURNER)	TAPA FILTRO (PARA MOD. CAL. GAS QUEMAD. ATMOSFERICO)	COUVERCLE FILTRE (POUR MACHINES CHAUF.GAZ BRULEUR ATMOS.)
16	264051	VENTURI HOSE (FOR MACHINES GAS HEATING ATMOS. BURNER)	TUBO VENTURI (PARA MOD. CAL. GAS QUEMAD. ATMOSFERICO)	TUBE VENTURI (POUR MACHINES CHAUF.GAZ BRULEUR ATMOS.)

Nº	REF	DENOMINATION	DENOMINACIÓN	DENOMINATION
17	260729	INJECTOR BRACKET (FOR MACHINES GAS HEATING ATMOS. BURNER)	SOPORTE INYECCION (PARA MOD. CAL. GAS QUEMAD. ATMOSFERICO)	SUPPORT INJECTEUR (POUR MACHINES CHAUF.GAZ BRULEUR ATMOS.)
18	260695	PRIMARY DEFLECTOR (FOR MACHINES GAS HEATING ATMOS. BURNER)	DEFLECTOR PRIMARIO (PARA MOD. CAL. GAS QUEMAD. ATMOSFERICO)	DEFLECTEUR PRIMAIRE (POUR MACHINES CHAUF.GAZ BRULEUR ATMOS.)
	286732	PRIMARY DEFLECTOR (FOR MACHINES GAS HEATING ATMOS. BURNER) (FOR USA AND CANADA ONLY)	DEFLECTOR PRIMARIO (PARA MOD. CAL. GAS QUEMAD. ATMOSFERICO) (SOLO PARA USA Y CANADA)	DEFLECTEUR PRIMAIRE (POUR MACHINES CHAUF.GAZ BRULEUR ATMOS.) (SEULEMENT POUR USA ET CANADA)
19	275818	INJECTOR (FOR 3221) (ATMOSPHERIC BURNER) (FOR PROPANE GAS G31-37 MBAR)	INYECTOR (PARA 3221) (PARA QUEMADOR ATMOSFERICO) (PARA GAS PROPANO G31-37 MBAR)	INJECTEUR (POUR 3221) (POUR BRÔLEUR ATMOSPHERIQUE) (POUR GAZ PROPANE G31-37 MBAR)
	260166	INJECTOR (FOR 3215) (ATMOSPHERIC BURNER) (FOR PROPANE GAS G31-37 MBAR)	INYECTOR (PARA 3215) (PARA QUEMADOR ATMOSFERICO) (PARA GAS PROPANO G31-37 MBAR)	INJECTEUR (POUR 3215) (POUR BRÔLEUR ATMOSPHERIQUE) (POUR GAZ PROPANE G31-37 MBAR)
	548511	INJECTOR (FOR 3221) (ATMOSPHERIC BURNER) (FOR PROPANE GAS G31-50 MBAR)	INYECTOR (PARA 3221) (PARA QUEMADOR ATMOSFERICO) (PARA GAS PROPANO G31-50 MBAR)	INJECTEUR (POUR 3221) (POUR BRÔLEUR ATMOSPHERIQUE) (POUR GAZ PROPANE G31-50 MBAR)
	284760	INJECTOR (FOR 3215) (ATMOSPHERIC BURNER) (FOR PROPANE GAS G31-50 MBAR)	INYECTOR (PARA 3215) (PARA QUEMADOR ATMOSFERICO) (PARA GAS PROPANO G31-50 MBAR)	INJECTEUR (POUR 3215) (POUR BRÔLEUR ATMOSPHERIQUE) (POUR GAZ PROPANE G31-50 MBAR)
	548552	INJECTOR (FOR 3221) (ATMOSPHERIC BURNER) (FOR NATURAL GAS G20)	INYECTOR (PARA 3221) (PARA QUEMADOR ATMOSFERICO) (PARA GAS NATURAL G20)	INJECTEUR (POUR 3221) (POUR BRÔLEUR ATMOSPHERIQUE) (POUR GAZ NATUREL G20)
	554949	INJECTOR (FOR 3215) (ATMOSPHERIC BURNER) (FOR NATURAL GAS G20)	INYECTOR (PARA 3215) (PARA QUEMADOR ATMOSFERICO) (PARA GAS NATURAL G20)	INJECTEUR (POUR 3215) (POUR BRÔLEUR ATMOSPHERIQUE) (POUR GAZ NATUREL G20)
	284737	INJECTOR (FOR 3221) (ATMOSPHERIC BURNER) (FOR NATURAL GAS G25)	INYECTOR (PARA 3221) (PARA QUEMADOR ATMOSFERICO) (PARA GAS NATURAL G25)	INJECTEUR (POUR 3221) (POUR BRÔLEUR ATMOSPHERIQUE) (POUR GAZ NATUREL G25)
	548545	INJECTOR (FOR 3215) (ATMOSPHERIC BURNER) (FOR NATURAL GAS G25)	INYECTOR (PARA 3215) (PARA QUEMADOR ATMOSFERICO) (PARA GAS NATURAL G25)	INJECTEUR (POUR 3215) (POUR BRÔLEUR ATMOSPHERIQUE) (POUR GAZ NATUREL G25)
	548578	INJECTOR (FOR X13084) (ATMOSPHERIC BURNER) (FOR PROPANE GAS)	INYECTOR (PARA X13084) (PARA QUEMADOR ATMOSFERICO) (PARA GAS PROPANO)	INJECTEUR (POUR X13084) (POUR BRÔLEUR ATMOSPHERIQUE) (POUR GAZ PROPANE)

Nº	REF	DENOMINATION	DENOMINACIÓN	DENOMINATION
	548586	INJECTOR (FOR X13061) (ATMOSPHERIC BURNER) (FOR PROPANE GAS)	INYECTOR (PARA X13061) (PARA QUEMADOR ATMOSFERICO) (PARA GAS PROPANO)	INJECTEUR (POUR X13061) (POUR BRÛLEUR ATMOSPHERIQUE) (POUR GAZ PROPANE)
	548594	INJECTOR (FOR X13084) (ATMOSPHERIC BURNER) (FOR NATURAL GAS)	INYECTOR (PARA X13084) (PARA QUEMADOR ATMOSFERICO) (PARA GAS NATURAL)	INJECTEUR (POUR X13084) (POUR BRÛLEUR ATMOSPHERIQUE) (POUR GAZ NATUREL)
	284687	INJECTOR (FOR X13061) (ATMOSPHERIC BURNER) (FOR NATURAL GAS)	INYECTOR (PARA X13061) (PARA QUEMADOR ATMOSFERICO) (PARA GAS NATURAL)	INJECTEUR (POUR X13061) (POUR BRÛLEUR ATMOSPHERIQUE) (POUR GAZ NATUREL)
20	264127	INJECTOR HOLDER (ATMOSPHERIC BURNER)	PORTA-INYECTOR (PARA QUEMADOR ATMOSFERICO)	PORTE-INJECTEUR (POUR BRÛLEUR ATMOSPHERIQUE)
21	529891	ELEC. INSTALLATION BRACKET (ATMOSPHERIC BURNER)	SOPORTE INSTALACION ELECTRODO (PARA QUEMADOR ATMOSFERICO)	SUPPORT INSTALLATION ELEC. (POUR BRÛLEUR ATMOSPHERIQUE)
22	300723	FLEX INOX HOSE	TUBO FLEX.EXTEN.INOX GM150401*	TUBE FLEX INOX
23	531707	BALL GAS VALVE 3/4" MxH	VALVULA GAS DE BOLA 3/4" BSP MxH	VALVE GAZ A BILLES 3/4" MxH
	538595	BALL GAS VALVE 3/4" NPT MxH * (FOR USA AND CANADA ONLY)	VALVULA GAS DE BOLA 3/4" NPT MxH * (SOLO PARA USA Y CANADA)	VALVE GAZ A BILLES 3/4" NPT MxH* (SEULEMENT POUR USA ET CANADA)
24	304220	MALE DOUBLE JOINTING 3/4"	UNION DOBLE MACHO 3/4 01212727*	UNION DOUBLE MALE 3/4"
	249508	STEAM INLET SLEEVE (FOR USA AND CANADA ONLY)	MANGUITO ENTRADA VAPOR (SOLO PARA USA Y CANADA)	MANCHON ENTREE VAPEUR (SEULEMENT POUR USA ET CANADA)
25	198465	FILTER FOR GAS MOD. 70608 3/4"	FILTRO PARA GAS MOD.70608 3/4"	FILTRE POUR GAZ MOD.70608 3/4"
26	306258	BRASS NUT 3/4"	TUERCA LATON CON VALONA 3/4"	ECROU LAITON 3/4"
27	546911	GAS INLET HOSE	TUBO ENTRADA GAS	TUBE ENTREE GAZ
28	537837	GAS VALVE FLANGE* (FOR MACHINES GAS HEATING ATMOS. BURNER)	BRIDA PARA VALVULA DE GAS* (PARA MOD. CAL. GAS QUEMAD. ATMOSFERICO)	BRIDE VALVE GAZ* (POUR MACHINES CHAUF.GAZ BRULEUR ATMOS.)
29	556886	GAS VALVE CE/CSA (FOR MACHINES GAS HEATING ATMOS. BURNER)	VALVULA DE GAS CE/CSA (PARA MOD. CAL. GAS QUEMAD. ATMOSFERICO)	VALVE GAZ CE/CSA (POUR MACHINES CHAUF.GAZ BRULEUR ATMOS.)
30	542688	BURNER ELEC. CONTROL * (FOR MACHINES GAS HEATING ATMOS. BURNER)	CONTROL ELECTRO. QUEMADOR * (PARA MOD. CAL. GAS QUEMAD. ATMOSFERICO)	CONTROLE ELEC. BRULEUR * (POUR MACHINES CHAUF.GAZ BRULEUR ATMOS.)
31	546945	GAS VALVE 1/2" FLANGE * (FOR MACHINES GAS HEATING ATMOS. BURNER)	BRIDA CURVA 1/2" PARA VALVULA GAS * (PARA MOD. CAL. GAS QUEMAD. ATMOSFERICO)	BRIDE 1/2" POUR VALVE GAZ * (POUR MACHINES CHAUF.GAZ BRULEUR ATMOS.)
32	535377	ROLL LEFT COVER	TAPA IZQUIERDA RODILLO	COUVERCLE GAUCHE ROULEAU
33	548065	CONICAL PLUG D19.8 GPN 600B198	TAPON CONICO D19.8 GPN 600B198	BOUCHON CONIQUE D19.8 GPN 600B198

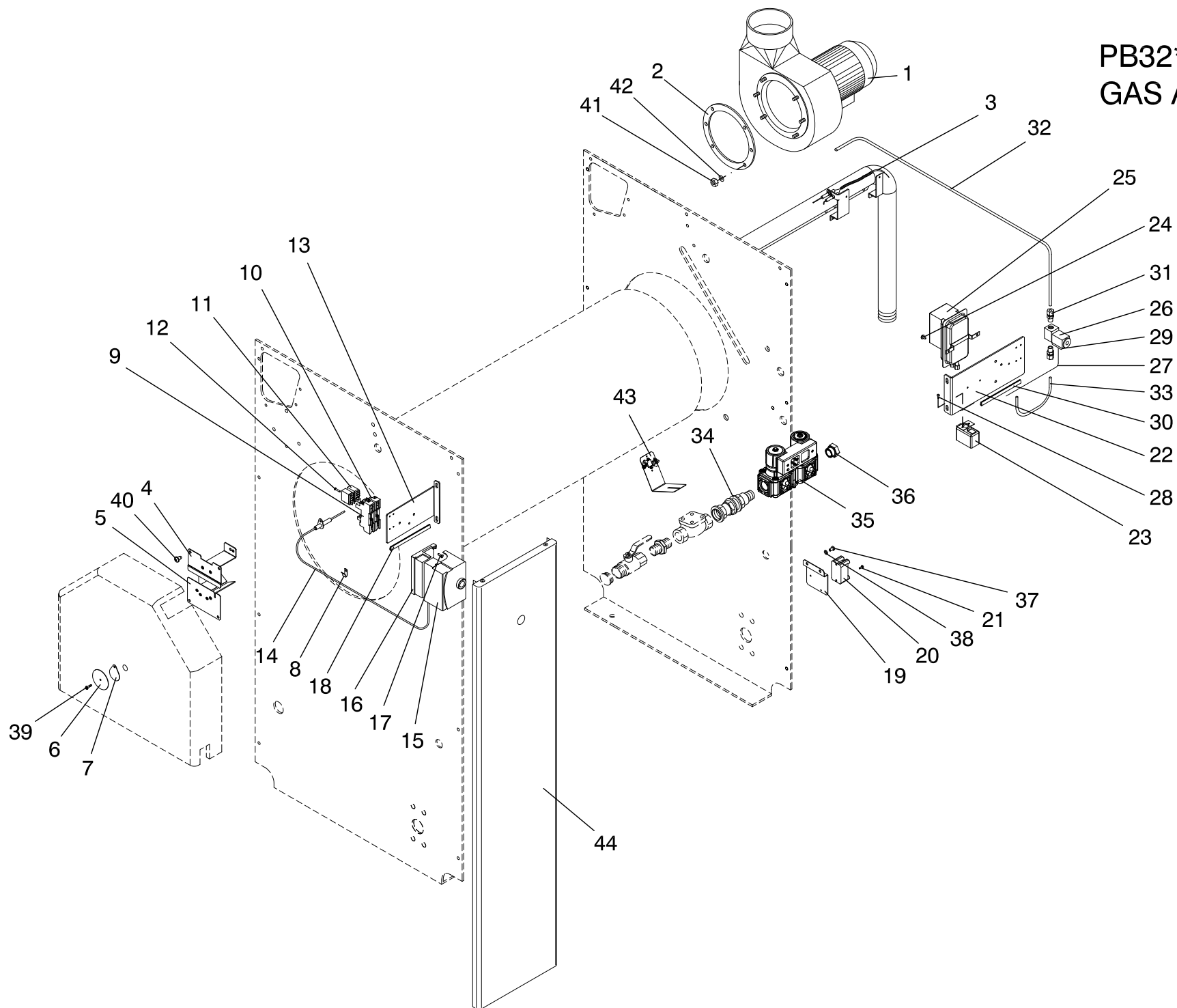
Nº	REF	DENOMINATION	DENOMINACIÓN	DENOMINATION
34	548768	LEFT COVER ISOLATION	AISLANTE TAPA IZQUIERDA	ISOLANT COUVERCLE GAUCHE
35	548776	INTAKE BOX INSULATION	AISLANTE CAJA ASPIRACION	ISOLANT BOITE ASPIRATION
36	548784	INTAKE BOX INSULATION	AISLANTE CAJA ASPIRACION	ISOLANT BOITE ASPIRATION
37	548792	RIGHT COVER ISOLATION (FOR MACHINES GAS HEATING ATMOS. BURNER)	AISLANTE TAPA DERECHA (PARA MOD. CAL. GAS QUEMAD. ATMOSFERICO)	ISOLANT COUVERCLE DROITE (POUR MACHINES CHAUF.GAZ BRULEUR ATMOS.)
38	137661	BAYONET HEAD	CABEZA BAYONETA FEK.031.1613	TETE BAYONETTE
39	326371	FUSE FST 8A	CART.FUSIB.FST 0034.5244 8 A*	CARTOUCHE FUSIBLE FST 8A
40	540286	TRANSFORMER 100VA 2X115V_2 * (FOR 200V-208V-220V-230V-240V) (FOR 208-240V) (FOR 380V-400V-415V)	TRANSFORMADOR 100VA 2X115V_2 * (PARA 200V-208V-220V-230V-240V) (PARA 208-240V) (PARA 380V-400V-415V)	TRANSFORMATEUR 100VA 2X115V_2 * (POUR 200V-208V-220V-230V-240V) (POUR 208-240V) (POUR 380V-400V-415V)
41	539056	X8_1 PLUG ELEC.INST. (FOR MACHINES GAS HEATING ATMOS. BURNER) (FOR 200V-208V-220V-230V-240V) (FOR 208-240V) (FOR 380V-400V-415V)	INST.ELEC.CONECTORA X8_1 (PARA MOD. CAL. GAS QUEMAD. ATMOSFERICO) (PARA 200V-208V-220V-230V-240V) (PARA 208-240V) (PARA 380V-400V-415V)	INST.ELEC. CONNECTEUR X8_1 (POUR MACHINES CHAUF.GAZ BRULEUR ATMOS.) (POUR 200V-208V-220V-230V-240V) (POUR 208-240V) (POUR 380V-400V-415V)
	555847	PLUG ELEC.INST. X8_1_NON (FOR MACHINES GAS HEATING ATMOS. BURNER) (380-400-415-440-480V WITHOUT NEUTRAL) (FOR (440÷480)V WITHOUT NEUTRAL)	INST.ELEC.CONECTORA X8_1_NON (PARA MOD. CAL. GAS QUEMAD. ATMOSFERICO) (PARA 380-400-415-440-480V SIN NEUTRO) (PARA (440÷480)V SIN NEUTRO)	INST.ELEC. CONNECTEUR X8_1_NON (POUR MACHINES CHAUF.GAZ BRULEUR ATMOS.) (POUR 380-400-415-440-480V SANS NEUTRE) (POUR (440÷480)V SANS NEUTRE)
42	198861	GRAL.SWITCH P1-25/V/SVB	INTERRUPT.GENERAL P1-25/V/SVB	INTERRUPTEUR GRAL.P1-25/V/SVB
43	542654	FUSE BRACKET	SOPORTE FUSIBLES	SUPPORT FUSIBLES
44	544411	AUTOMATIC SWITCH 0,5A (FOR MACHINES GAS HEATING ATMOS. BURNER) (FOR 200V-208V-220V-230V-240V) (FOR 208-240V) (FOR 380V-400V-415V)	INTERRUPTOR AUT. 0,5A CURVA D* (PARA MOD. CAL. GAS QUEMAD. ATMOSFERICO) (PARA 200V-208V-220V-230V-240V) (PARA 208-240V) (PARA 380V-400V-415V)	INTERRUPTEUR AUT.0,5A (POUR MACHINES CHAUF.GAZ BRULEUR ATMOS.) (POUR 200V-208V-220V-230V-240V) (POUR 208-240V) (POUR 380V-400V-415V)
	518191	AUTOMATIC SWITCH 4A (380-400-415-440-480V WITHOUT NEUTRAL) (FOR (440÷480)V WITHOUT NEUTRAL)	INTERRUPTOR AUT. 4A CURVA D* (PARA 380-400-415-440-480V SIN NEUTRO) (PARA (440÷480)V SIN NEUTRO)	INTERRUPTEUR AUT. 4A (POUR 380-400-415-440-480V SANS NEUTRE) (POUR (440÷480)V SANS NEUTRE)
45	547513	BURNER GA ELEC.INST. (ATMOSPHERIC BURNER)	INST.ELEC. QUEMADOR GA (PARA QUEMADOR ATMOSFERICO)	INST.ELEC. BRULEUR GA (POUR BRÛLEUR ATMOSPHERIQUE)
46	539064	X7_1 PLUG ELEC.INST.	INST.ELEC. X7_1	INST.ELEC. CONNECTEUR X7_1
47	160119	FUSE HOLDER REF.FEC 031 1631	PORTAFUSIBLES REF.FEC.031.1631	PORTE-FUSIBLE REF.FEC 031 1631
48	302612	FUSE FST 0034.3117 1A (FOR MACHINES GAS HEATING ATMOS. BURNER) (FOR 200V-208V-220V-230V-240V) (FOR 208-240V) (FOR 380V-400V-415V)	CART.FUSIB.FST 0034.3117 1A (PARA MOD. CAL. GAS QUEMAD. ATMOSFERICO) (PARA 200V-208V-220V-230V-240V) (PARA 208-240V) (PARA 380V-400V-415V)	CART.FUSIBLE FST 0034.3117 1A (POUR MACHINES CHAUF.GAZ BRULEUR ATMOS.) (POUR 200V-208V-220V-230V-240V) (POUR 208-240V) (POUR 380V-400V-415V)

Nº	REF	DENOMINATION	DENOMINACIÓN	DENOMINATION
	302612	FUSE FST 0034.3117 1A (FOR MACHINES GAS HEATING ATMOS. BURNER) (380-400-415-440-480V WITHOUT NEUTRAL) (FOR (440÷480)V WITHOUT NEUTRAL)	CART.FUSIB.FST 0034.3117 1A (PARA MOD. CAL. GAS QUEMAD. ATMOSFERICO) (PARA 380-400-415-440-480V SIN NEUTRO) (PARA (440÷480)V SIN NEUTRO)	CART.FUSIBLE FST 0034.3117 1A (POUR MACHINES CHAUF.GAZ BRULEUR ATMOS.) (POUR 380-400-415-440-480V SANS NEUTRE) (POUR (440÷480)V SANS NEUTRE)
49	553826	ACCESSOR.H-P1	CUBREBORNES H-P1 MOELLER	ACCESOR.H-P1
50	508929	TRANSFORMER 1kVA 2X115V * (FOR MACHINES GAS HEATING ATMOS. BURNER) (FOR MACHINES GAS HEATING ATMOS. BURNER) (380-400-415-440-480V WITHOUT NEUTRAL)	TRANSFORMADOR 1KVA 2X115V * (PARA MOD. CAL. GAS QUEMAD. ATMOSFERICO) (PARA MOD. CAL. GAS QUEMAD. ATMOSFERICO) (PARA 380-400-415-440-480V SIN NEUTRO)	TRANSFORMATEUR 1kVA 2X115V * (POUR MACHINES CHAUF.GAZ BRULEUR ATMOS.) (POUR MACHINES CHAUF.GAZ BRULEUR ATMOS.) (POUR 380-400-415-440-480V SANS NEUTRE)
51	344366	HEATER BRIDGE WIRE (FOR MACHINES GAS HEATING ATMOS. BURNER) (380-400-415-440-480V WITHOUT NEUTRAL) (FOR (440÷480)V WITHOUT NEUTRAL)	CABLE PUENTE CALEFACTOR (PARA MOD. CAL. GAS QUEMAD. ATMOSFERICO) (PARA 380-400-415-440-480V SIN NEUTRO) (PARA (440÷480)V SIN NEUTRO)	CABLE PONT RESISTANCE (POUR MACHINES CHAUF.GAZ BRULEUR ATMOS.) (POUR 380-400-415-440-480V SANS NEUTRE) (POUR (440÷480)V SANS NEUTRE)
52	183400	PLATE SCREW ST-4, 20 P.F. C/AL.T25	TORNILLO CHAPA ST-4 (ESPECIAL)*	VIS PLAQUE ST-4, 20 P.F. C/AL.T25
53	144279	ALLEN SCREW DIN 912 M-5X15	TOR.ALLDIN912-8.8 B.TRI.M 5X15	VIS ALLEN DIN 912 M-5X15
54	153205	WASHER 20X7X2	ARANDELA 20X7X2 TRIVALEN.	RONDELLE 20X7X2
55	183541	CYLIN. NUT M5 R-310077-3	TUER.ENJ.M5 CILINDR.R-310077-3	ECROU M5 CYLIN. R-310077-3
56	132282	CLAMP 32-50	ABRAZADERA 32- 50	BRIDE 32-50
57	259796	SEPARATOR 20X8,25X10	SEPARADOR 20X8,25X10	SEPARATEUR 20X8,25X10
58	149534	BICR.WASHER B DIN125-ST 5,3	ARAN.B DIN125-ST BICR. 5,3	RONDELLE B BICR.DIN125-ST 5,3
59	149526	BICR.WASHER B DIN125-ST 6,4	ARAN.B DIN125-ST B.TRI. 6,4	RONDELLE B DIN125-ST BICR.6,4
60	149310	INOX.A2 WASHER DIN125 6,4	ARAN. DIN125 INOX A2 6,4	RONDELLE INOX.A2 DIN125 6,4
61	149518	BICR.WASHER B DIN125-ST 8,4	ARAN.B DIN125-ST B.TRI. 8,4	RONDELLE.B DIN125-ST BICR.8,4
62	222166	WASHER 60X4.5X1	ARANDELA 60X4.5X1	RONDELLE 60X4.5X1
63	146274	BICR.HEX SCREW DIN933-8 M-5X10	TOR.EX.DIN933-8.8 B.TRI.M 5X10	VIS HEX.BICR.DIN933-8.8 M-5X10
64	165621	BIC HEX SCREW DIN933-8,8 M6X10	TOR.EX.DIN933-8.8 B.TRI.M 6X10	VIS HEX DIN933-8,8 BICR M6X10
65	146233	BICR.HEX SCREW DIN933-8 M6X15	TOR.EX.DIN933-8.8 B.TRI.M 6X15	VIS HEX DIN933-8.8 BICR.M6X15
66	144923	INOX HEX.SCREW DIN 933 M-6X20	TOR.EX.DIN933INOX A2-70 M 6X20	VIS HEX INOX DIN 933 M-6X20
67	144113	ALLEN BUMP DIN 916 M-6X20	ESP.ALL.DIN916-10.9 M 6X20	GOUJON ALLEN DIN 916 M-6X20
68	166652	BIC.HEX SCREW DIN933-8.8 M8X15	TOR.EX.DIN933-8.8 B.TRI.M 8X15	VIS HEX DIN933-8.8 BICR. M8X15
69	193391	HEX SCREW 8G DIN933 M- 8X 70	TOR.EX.DIN933-8.8 B.TRI.M 8X70	VIS HEX.8G DIN933 M- 8X 70
70	328245	PAN HEAD SCREW T25 AR.18ESTR.M 6X10	TORNILLO C.ALOM.T25 M 6X10 (ESPECIAL)*	VIS À TÊTE PAN T25 AR.18ESTR.M 6X10
71	195552	PLATE SCREW DIN7971 8X3/4"	TOR.CHAPA CILI.DIN7971 8X3/4"	VIS DE PLAQUE DIN7971 8X3/4"

Nº	REF	DENOMINATION	DENOMINACIÓN	DENOMINATION
72	150177	BICR HEX NUT DIN934-8 M5	TUER.EX.DIN934-8 B.TRI.M 5	ECROU HEX DIN934-8 BIC.M5
73	150227	BICR HEX NUT DIN934-8 M6	TUER.EX.DIN934-8 B.TRI.M 6	ECROU HEX DIN934-8 BICR.M6
74	149971	INOX. HEX. NUT DIN 934 M-6	TUER.EX.DIN934 INOX A2-70 M 6	ECROU HEX. INOX. DIN 934 M-6
75	150201	BICR.HEX NUT DIN 934-8 M-8	TUER.EX.DIN934-8 B.TRI.M 8	ECROU HEX.DIN 934-8 BICR.M-8
76	559070	BURNER COVER	TAPA QUEMADOR	COUVERCLE BRULEUR
77	567388	GAS INLET PROTECTION PLATE	CHAPA PROTECCION ENTRADA GAS	PLAQUE PROTECTION ENTREE DE GAZ
		GAS CONVERSION KITS (ATMOSPHERIC BURNER) (FOR USA AND CANADA ONLY)	KITS CAMBIO GAS (PARA QUEMADOR ATMOSFERICO) (SOLO PARA USA Y CANADA)	KITS CHANGEMENT GAZ (POUR BRÛLEUR ATMOSPHERIQUE) (SEULEMENT POUR USA ET CANADA)
794461		KIT ATM.GAS CONVER. X13061 PROP. TO NAT.	KIT CAMBIO GAS ATM. X13061 PROP. A NAT.	KIT CONVER. GAZ ATM. X13061 PROP. A NAT.
792028		KIT ATM.GAS CONVER. X13084 PROP. TO NAT.	KIT CAMBIO GAS ATM. X13084 PROP. A NAT.	KIT CONVER. GAZ ATM. X13084 PROP. A NAT.
794479		KIT ATM.GAS CONVER. X13061 NAT. TO PROP.	KIT CAMBIO GAS ATM. X13061 NAT. A PROP.	KIT CONVER. GAZ ATM. X13061 NAT. A PROP.
792036		KIT ATM.GAS CONVER. X13084 NAT. TO PROP.	KIT CAMBIO GAS ATM. X13084 NAT. A PROP.	KIT CONVER. GAZ ATM. X13084 NAT. A PROP.
		GAS CONVERSION KITS (ATMOSPHERIC BURNER)	KITS CAMBIO GAS (PARA QUEMADOR ATMOSFERICO)	KITS CHANGEMENT GAZ (POUR BRÛLEUR ATMOSPHERIQUE)
794420		KIT ATM.GAS CONVER. PB3215 TO NAT. G20	KIT CAMBIO GAS ATM. PB3215 A NAT. G20	KIT CONVER. GAZ ATM. PB3215 A NAT. G20
794438		KIT ATM.GAS CONVER. PB3215 TO NAT. G25	KIT CAMBIO GAS ATM. PB3215 A NAT. G25	KIT CONVER. GAZ ATM. PB3215 A NAT. G25
794446		KIT ATM.GAS CONVER.PB3215 TO PROP. G3137	KIT CAMBIO GAS ATM. PB3215 A PROP. G3137	KIT CONVER. GAZ ATM.PB3215 A PROP. G3137
794453		KIT ATM.GAS CONVER.PB3215 TO PROP. G3150	KIT CAMBIO GAS ATM. PB3215 A PROP. G3150	KIT CONVER. GAZ ATM.PB3215 A PROP. G3150
794487		KIT ATM.GAS CONVER. PB3221 TO NAT. G20	KIT CAMBIO GAS ATM. PB3221 A NAT. G20	KIT CONVER. GAZ ATM. PB3221 A NAT. G20
794495		KIT ATM.GAS CONVER. PB3221 TO NAT. G25	KIT CAMBIO GAS ATM. PB3221 A NAT. G25	KIT CONVER. GAZ ATM. PB3221 A NAT. G25
792002		KIT ATM.GAS CONVER. PB3221 TO NAT. G3137	KIT CAMBIO GAS ATM. PB3221 A PROP. G3137	KIT CONVER. GAZ ATM. PB3221 A NAT. G3137
792010		KIT ATM.GAS CONVER. PB3221 TO NAT. G3150	KIT CAMBIO GAS ATM. PB3221 A PROP. G3150	KIT CONVER. GAZ ATM. PB3221 A NAT. G3150

PB32**
GAS AGA

9



Nº	REF	DENOMINATION	DENOMINACIÓN	DENOMINATION
1	690602	FAN PB-51 AGA	VENTILADOR PB-32 AGA	VENTILATEUR PB-51 AGA
2	522359	EXTRACTOR DIVIDER	SEPARADOR EXTRACTOR	SEPARATEUR EXTRACTEUR
3	690586	AGA IGNITION ELECTRICAL INSTALLATION	INSTALACIÓN ELÉCTRICA ENCENDIDO AGA	INSTALLATION ELECTRIQUE ALLUMAGE AGA
4	10038776	BURNER BRACKET ASSEMBLY	CONJUNTO SOPORTE QUEMADOR	ENSEMBLE SUPPORT BRULEUR
5	10070357	BURNER BRACKET ASSEMBLY	CONJUNTO SOPORTE QUEMADOR	ENSEMBLE SUPPORT BRULEUR
6	222166	WASHER 60X4.5X1	ARANDELA 60X4.5X1	RONDELLE 60X4.5X1
7	10022531	SPYHOLE	MIRILLA	REGARD
8	350694	ALUMINIUM CLAMP AL4	ABRAZADERA ALUMINIO AL4	BRIDE ALUMINIUM AL4
9	313304	RELAY BASE 1P REF.P2RF-05-E	BASE RELE 1P. REF. P2RF-05-E	BASE RELAIS 1P REF.P2RF-05-E
10	686774	RELAY OMROM REF.G2R-1-SN 110VAC	RELE OMRON RF.G2R-1-SN 110VAC	RELAIS OMROM REF.G2R-1-SN 110VAC
11	686782	RELAY OMROM REF.G2R-1-SN 240VAC	RELE OMRON RF.G2R-1-SN 240VAC	RELAIS OMROM REF.G2R-1-SN 240VAC
12	144758	INOX LENS HEAD S.DIN963 M 3X16	TOR.AV.DIN963 INOX A2-70 M3X16	VIS T/FRAI.INOX DIN963 M 3X16
13	10101897	BURNER ELECTRIC CONTROL SUPPORT	SOPORTE CONTROL ELECTRICO QUEMADOR	SUPPORT CONTROLE ELECTRIQUE BRULEUR
14	690610	LIGHTING IONIZATION AGA INSTALLATION	INSTALACIÓN ELECTRODO IONIZACION AGA	ELECTRODE IONISATION AGA INSTALLATION
15	651141	BURNER ELEC. CONTROL AGA	CONTROL ELECTRO. QUEMADOR AGA	CONTROLE ELEC. BRULEUR AGA
	688242	ELECTRIC INTSALATION GAS AGA	INSTALACIÓN ELÉCTRICA QUEMADOR G AGA	IINSTALLATION ÉLECTRIQUE GAZ AGA
	690545	AGA ELECTRIC CONTROL CABLE INLET	ENTRADA CABLE CONTROL ELÉCTRICO AGA	ENTRÉE CÂBLE COMMANDE ÉLECTRIQUE
16	651224	BURNER ELEC. CONTROL BASE AGA	BASE CONTROL ELECTRO. QUEMADOR AGA	BASE CONTROLE ELEC. BRULEUR AGA
17	147629	COUNTERSUNK SCREW DIN 963 4,8 M4x13 TRIV	TORNILLO AVELLANADO DIN 963 4,8 M4x13 TR	VIS FRAISEE DIN 963 4,8 M4x13 TRIVALENT
18	192021	PROFILE	ENCUADERNADOR P (NEGRO) 2MT.	PROFILE
19	10286516	TRANSFORMER SUPPORT	SOPORTE TRANSFORMADOR	SUPPORT TRANSFORMATEUR
20	651232	TRANSFORMER AGA BURNER	TRANSFORMADOR QUEMADOR AGA	TRANSFORMATEUR BRULEUR AGA
21	322693	SCREW PT KN35X10 WN1412	TORNILLO PT KN35X10 WN1412 (ESPECIAL)	VIS PT KN35X10 WN1412
22	10131043	AGA SUPPORT WIRING	SOPORTE INSTALACION AGA	SUPPORT INSTALLATION AGA
23	10019891	OIL THERMOSTAT 240°C AGA	TERMOSTATO ACEITE 240°C AGA *	THERMOSTAT D'HUILE 240°C AGA
24	183400	PLATE SCREW ST-4, 20 P.F. C/AL.T25	TORNILLO CHAPA ST-4 (ESPECIAL)*	VIS PLAQUE ST-4, 20 P.F. C/AL.T25
25	651190	AIR PRESSURE SW. (40PA)	PRESOSTATO PARA AIRE (AGA)	PRESSOSTAT AIR (40PA)
26	651133	ELECTROVALVE 3 TRACKS 1/4"	ELECTROVALVULA 3 VIAS 1/4"	ELECTROVANNE 3 VOIES 1/4"

Nº	REF	DENOMINATION	DENOMINACIÓN	DENOMINATION
27	688226	ELECTRIC INTSALATION GAS AGA	INSTALACIÓN ELÉTRICA GAS AGA	IINSTALLATION ÉLECTRIQUE GAZ AGA
28	145623	SCREW DIN85 INOX A2-70 M 3X 8	TOR.PLA.DIN85 INOX A2-70 M3X 8	VIS P DIN85 INOX A2-70 M 3X 8
29	10290336	VALVE CONNECTOR TYPE B	CONECTOR VALVULA TIPO B	CONNECTEUR VALVE TYPE B
30	192021	PROFILE	ENCUADERNADOR P (NEGRO) 2MT.	PROFILE
31	690164	STRAIGHT FITTING 1/8"G Ø6	RACOR RECTO 1/8"G Ø6	RACCORD DROIT 1/8"G Ø6
32	690636	COPPER HOSE	TUBO COBRE	TUBE CUIVRE
33	690644	COPPER HOSE	TUBO COBRE	TUBE CUIVRE
34	289405	GAS INLET HOSE	TUBO ENTRADA GAS	TUBE ENTREE GAZ
35	651182	GAS VALVE 240V AGA	VALVULA DE GAS 240V AGA	VALVE GAZ 240V AGA
36	10374163	REDUCER M-F BSP G3/4" - G1/2"	REDUCCION M-H BSP G3/4" - G1/2" *	REDUCTION M-F BSP G3/4" - G1/2"
37	165621	BIC HEX SCREW DIN933-8,8 M6X10	TOR.EX.DIN933-8.8 B.TRI.M 6X10	VIS HEX DIN933-8,8 BICR M6X10
38	149526	BICR.WASHER B DIN125-ST 6,4	ARAN.B DIN125-ST B.TRI. 6,4	RONDELLE B DIN125-ST BICR.6,4
39	195552	PLATE SCREW DIN7971 8X3/4"	TOR.CHAPA CILI.DIN7971 8X3/4"	VIS DE PLAQUE DIN7971 8X3/4"
40	328245	PAN HEAD SCREW T25 AR.18ESTR.M 6X10	TORNILLO C.ALOM.T25 M 6X10 (ESPECIAL)*	VIS À TÊTE PAN T25 AR.18ESTR.M 6X10
41	150227	BICR HEX NUT DIN934-8 M6	TUER.EX.DIN934-8 B.TRI.M 6	ECROU HEX DIN934-8 BICR.M6
42	149526	BICR.WASHER B DIN125-ST 6,4	ARAN.B DIN125-ST B.TRI. 6,4	RONDELLE B DIN125-ST BICR.6,4
43	10390789	THERMOSTAT ASSEMBLY PB51 AGA	CONJUNTO TERMOSTATO PB32 AGA	ENSEMBLE THERMOSTAT PB51 AGA
44	10105963	LEFT FRONT COVER	TAPA FRONTAL IZQUIERDA	COUVERCLE FRONTAL GAUCHE