



# **ED SERIES**

## **Electric Designer**

# **PARTS LIST**

Toll Free Phone, (US & Canada): (800) 427-6668

Toll Free Fax, (US & Canada): (800) 361-7745

<http://www.garland-group.com>



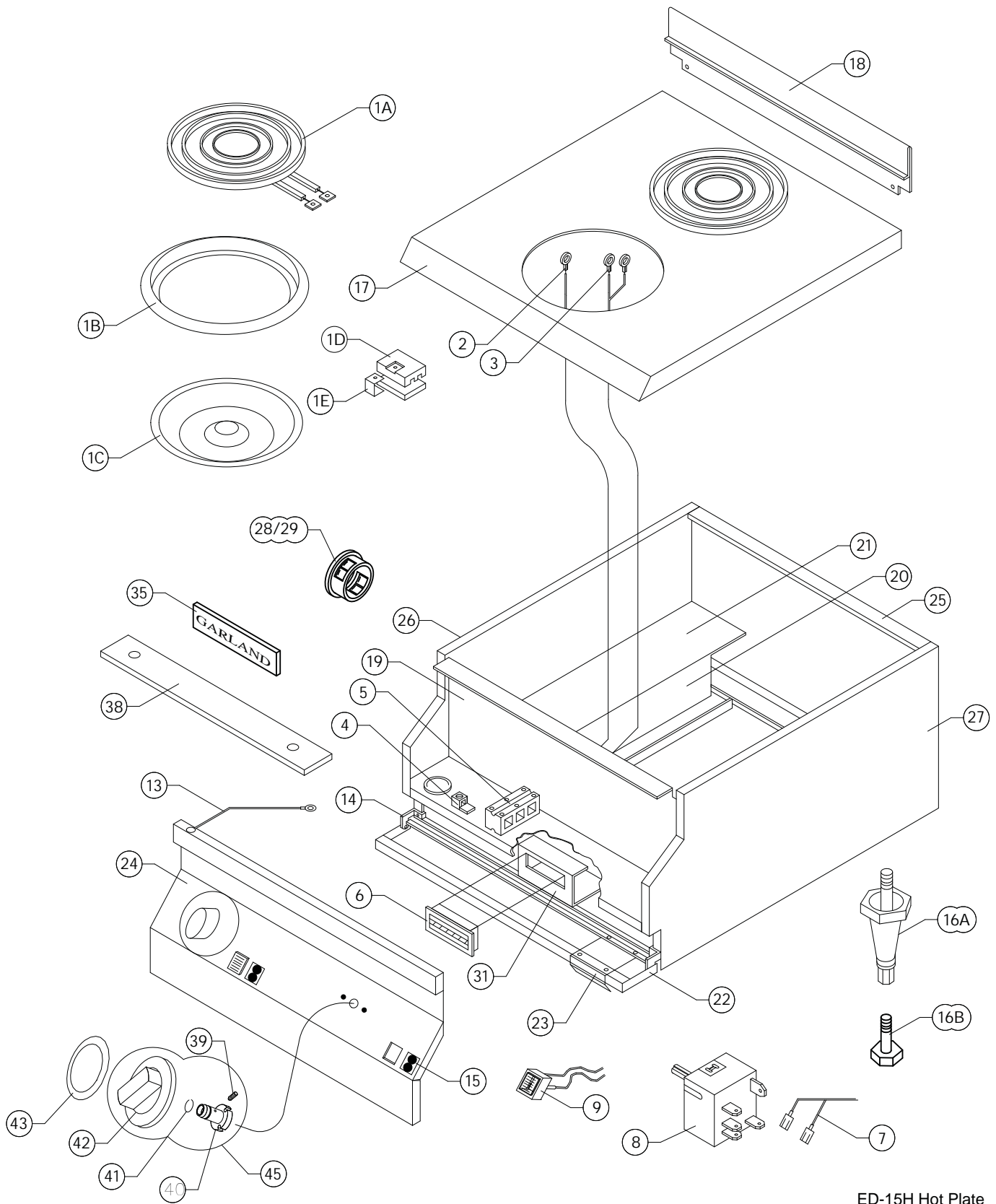


# **ED SERIES**

# **Electric Designer**

## ***Contents:***

Hot Plate ED-15H .....	Page 4
Hot Plates ED-15HSE, ED-15THSE & EDU-15HSE .....	Page 8
Griddles ED/EDU-15G, ED/EDU-24G, ED/EDU-36G .....	Page 12
Broiler ED/EDU-15B, ED/EDU-30B, ED/EDU-42B .....	Page 16
Food Warmer ED/EDU-15W/ED-15WP .....	Page 20
Electric Super Fryer ED-15SF, ED-30SFT, EDU-18-36SF .....	Page 24
Electric Fryer ED-15-30F, EDU-18-36FT .....	Page 30
Digital Photos .....	Page 35
Revision History .....	Page 36



ED-15H Hot Plate

# GARLAND PARTS IDENTIFICATION

## Hot Plate ED-15H

ITEM	PART #	DESCRIPTION	MODEL ED-15H	DATE		CRITICAL
			QTY	FROM	TO	
1A	<b>2195000</b>	<b>8" Surface Element 208V (2.1Kw)</b>	2			C
	<b>2195001</b>	<b>8" Surface Element 240V (2.1Kw)</b>	2			C
	<b>2195002</b>	<b>8" Surface Element 220V (2.1Kw)</b>	2			C
1B	2602399	8" Ring Assembly	2			
1C	2195300	8" Pan Reflector	2			
1D	2195800	Split Terminal Block (Small)	2			
1E	2627700	Terminal Block Clip	2			
2	2147703	Ground Wire	2			
3	2148100	Element Wire Harness	1			
4	G01500-1	Ground Terminal 55 Amp	1			
5	<b>2147300</b>	<b>Terminal Block 3 Circuit</b>	1			C
	<b>2147302</b>	<b>Terminal Block 3 Circuit Export</b>	1			C
6	<b>078174-1</b>	<b>Magnetic Door Catch</b>	1			C
7	2148000	Primary Wires	1			
8	<b>G03185-2</b>	<b>Infinite Switch-240 Volt</b>	2			C
9	<b>2138504</b>	<b>Pilot Green (Neon Lamp Housing w/Green Lens)</b>	2			C
13	2147700	Ground Wire	1			
14	2149400	Door Hinge Right Hand	1			
	2149401	Door Hinge Left Hand	1			
15	2150000	Element Identification Plate	2			
16A	078109-2	4" Adjustable Metal Leg	4			
16B	F157	Leveling Bolt-3/8-16x1 1/16"	4			
16C*	G01503-10	Leg Weld Nut	4			
17	2132699	Main Top Assembly	1			
18	2168000	Back Splash to 12/07/95	1		07-Dec-95	
	2385500	Back Splash from 12/07/95	1	07-Dec-95		
19	2132798	Control Shield Assembly	1		23-Feb-93	
	2132799	Control Shield Assembly	1	23-Feb-93	04-Apr-94	
	2351899	Control Shield Assembly	1	04-Apr-94		
20	2149600	Wireway	1			
21	2156500	Body Shield	1			
22	2149299	Door Assembly 15"	1			
23	2149300	Door Pull	1			
24	2137700	Control Panel	1		4-Apr-94	
	2349600	Control Panel	1	4-Apr-94		
25	2180900	Body Back & Bottom	1			
	2180901	Body Back & Bottom S/S	1			
26	2180699	Body Side Assembly LH - Black (Code 9402CG0180)	1		21-Feb-94	
	2180698	Body Side Assembly LH S/S (Code 9402CG0180)	1		21-Feb-94	
	2349498	Body Side Assembly LH (Code 9402CG0181)	1	21-Feb-94		
	2349496	Body Side Assembly LH (Code 9402CG0181)	1	21-Feb-94		
27	2180599	Side Assembly RH - Black (Code 9402CG0180)	1		21-Feb-94	
	2180598	Side - Right Assembly S/S (Code 9402CG0180)	1		21-Feb-94	
	2349499	Body Side Assembly RH (Code 9402CG0181)	1	21-Feb-94		
	2349497	Body Side Assembly RH (Code 9402CG0181)	1	21-Feb-94		
28	G01487-8	Heyco Bushing 11/16 ID	1			
29	G01487-5	Heyco Bushing 1-5/16 ID	1			
30*	2174500	Joiner Tab	2			
31	2139600	Magnet Mounting Bracket to 5/07/91	1		7-May-91	
	2183500	Magnet Bracket from 5/07/91	1	7-May-91		
32*	2149800	Access Panel	1			

\* NOT ILLUSTRATED

### RECOMMENDED STOCK PARTS

## GARLAND PARTS IDENTIFICATION

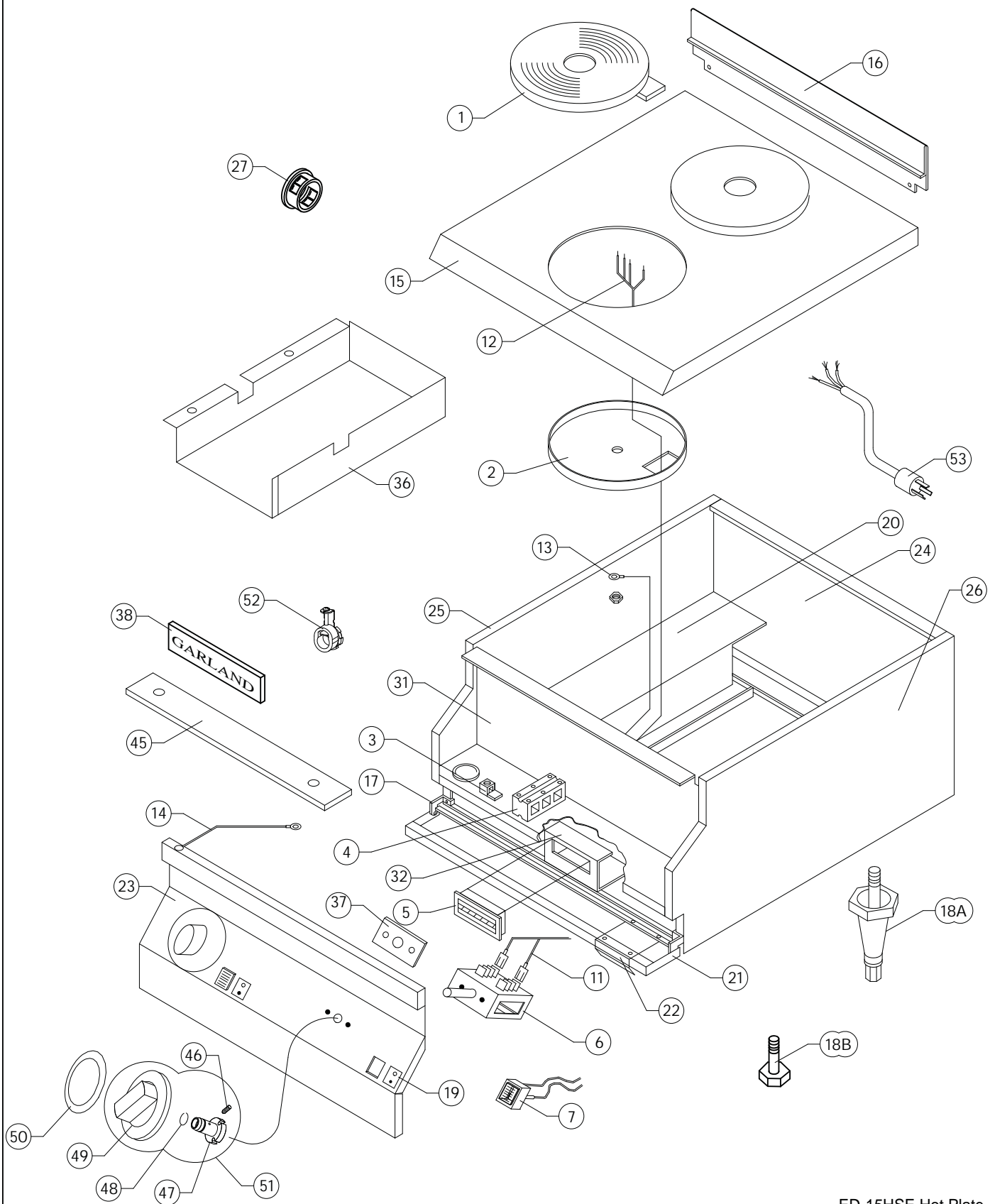
### Hot Plate ED-15H

ITEM	PART #	DESCRIPTION	MODEL ED-15H	DATE		CRITICAL
			QTY	FROM	TO	
33*	2171400	Terminal Block Mounting Bracket	1			
34*	2139700	Control Panel Clip	2			
35	3077101	Garland Nameplate 4 7/8"	1			
36*	2146100	Wiring Diagram (Domestic) Ed-15H 208V				
37*	2146200	Wiring Diagram (Export) Ed-15H 220V				
38	2285999	Leg Channel Assembly 15"	2			
39	F561	10-32 - 3/16 Socket Head Screw	2			
40	3043207	Knob Hub	2			
41	3043300	Retaining Spring	2			
42	3043100	Dial	2			
43	2139000	Dial Insert	2			
45	4512224	Dial Kit – Includes Items: 39, 40, 41, 42				

\* NOT ILLUSTRATED

#### **RECOMMENDED STOCK PARTS**

## ***NOTES***



ED-15HSE Hot Plate



**GARLAND PARTS IDENTIFICATION**  
**Hot Plates ED-15HSE, ED15THSE & EDU-15HSE**

ITEM	PART#	DESCRIPTION	MODEL QUANTITY			DATE		CRITICAL
			ED-15HSE	ED-15THSE	EDU-15HSE	FROM	TO	
1	<b>2590200</b>	<b>Sealed Element 208 Tim Hortons Only</b>		2				C
	<b>2590201</b>	<b>Sealed Element 220 Tim Hortons Only</b>		2				C
	<b>2590202</b>	<b>Sealed Element 240 Tim Hortons Only</b>		2				C
	<b>2147100</b>	<b>Sealed Element 208</b>	2		2			C
	<b>2147101</b>	<b>Sealed Element 220</b>	2		2			C
	<b>2147102</b>	<b>Sealed Element 240</b>	2		2			C
2	2147200	Screening Sheet 237mm	2		2			
	2147201	Screening Street 180mm Tim Hortons Only		2				
3	G01500-1	Ground Terminal 55 Amp	1	1	1			
4	<b>2147300</b>	<b>Terminal Block 3 Circuit</b>	1	1				C
	<b>2147302</b>	<b>Terminal Block 3 Circuit Export</b>	1		1			C
5	<b>078174-1</b>	<b>Magnetic Door Catch</b>	1	1	1			C
6	<b>2146900</b>	<b>6 Heat Switch</b>	2	2	2			C
7	<b>2138504</b>	<b>Pilot Green (Neon Lamp Housing w/Green Lens)</b>	2	2	2			C
11	2147800	Primary Wires Harness	1	1	1			
12	2147900	Element Wires Harness	2	2	2			
13	2147702	Ground Wire Rear	2	2	2			
14	2147700	Ground Wire	1	1	1			
15	2147399	Main Top Assembly	1		1			
	2137298	Main Top Assembly Tom Hortons Only		1				
16	2168000	Back Splash	1		1		07-Dec-95	
	2385500	Back Splash	1	1	1	07-Dec-95		
17	2149400	Door Hinge Right Hand	1	1	1			
	2139401	Door Hinge Left Hand	1	1	1			
18A	078109-2	4" Adjustable Metal Leg	4	4	4			
18B	F-157	Leveling Bolt-3/8-16x1-1/16"	4	4	4			
18C*	G01503-10	Leg Weld Nut	4	4	4			
19	2150000	Element Identification Plate	2	2	2			
20	2149600	Wireway	1	1	1			
21	2149299	Door Assembly 15"	1	1	1			
22	2149300	Door Pull	1	1	1		06-Mar-00	
	2149301	Door Handle	1	1	1	06-Mar-00		
23	2137700	Control Panel	1				04-Apr-94	
	2349600	Control Panel	1	1		04-Apr-94		
	9349602	Control Panel			1			
24	2180900	Body Back & Bottom	1	1	1			
	2180901	Body Back & Bottom S/S	1	1	1			
25	2180699	Body Side Assembly LH Black (Code 9402CG0180)	1	1			21-Feb-94	
	2180698	Body Side Assembly LH S/S (Code 9402CG0180)	1	1			21-Feb-94	
	2349498	Body Side Assembly LH (Code 9402CG0181)	1	1	1	21-Feb-94		
	2349496	Body Side Assembly LH (Code 9402CG0181)	1	1	1	21-Feb-94		

\* NOT ILLUSTRATED

**RECOMMENDED STOCK PARTS**

## GARLAND PARTS IDENTIFICATION

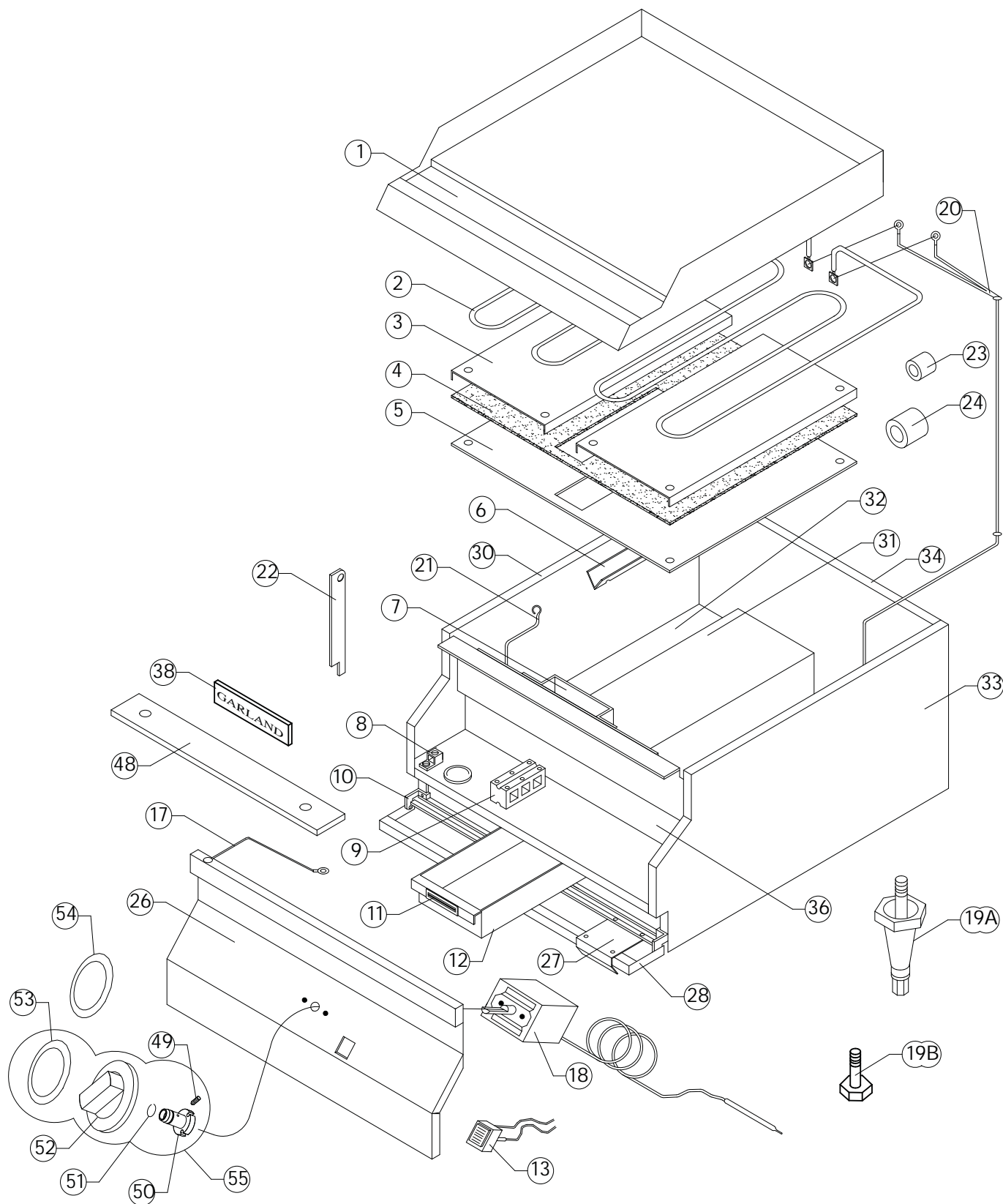
### Hot Plates ED-15HSE, ED15THSE & EDU-15HSE

ITEM	PART#	DESCRIPTION	MODEL			DATE		CRITICAL
			QUANTITY			FROM	TO	
			ED-15HSE	ED-15THSE	EDU-15HSE			
26	2180599	Side Assembly RH (Code 9402CG0180)	1	1			21-Feb-94	
	2180598	Side - Right Assembly S/S (Code 9402CG0180)	1	1			21-Feb-94	
	2394999	Body Side Assembly RH (Code 9402CG0181)	1	1	1	21-Feb-94		
	2349497	Body Side Assembly RH (Code 9402CG0181)	1	1	1	21-Feb-94		
27	G01487-8	Heyco Bushing 11/16 ID	1	1	1			
28*	G01487-5	Heyco Bushing 1-5/16 ID	1	1	1			
29*	2193700	Control Panel Clip	2	2	2			
30*	2174500	Joiner Tab	2	2	2			
31	2132799	Control Shield Assembly	1	1		23-Feb-93	04-Apr-94	
	2351899	Control Shield Assembly	1	1	1	04-Apr-94		
32	2139600	Magnet Mounting Bracket	1	1	1		07-May-94	
	2183500	Magnetic Bracket	1	1	1	07-May-94		
33*	2149800	Access Panel	1	1	1			
34*	2150200	Bottom Baffle	1	1	1			
35*	2171400	Terminal Black Mounting Bracket	1	1	1			
36	2608700	Wireway			1			
37	2618500	Switch Seal			2			
38	3077101	Garland Nameplate 4 7/8"	1	1	1			
39*	26186600	Side Seal			2			
40*	2618700	Front Seal			1			
41*	2146401	Wiring Diagram, EDU-15HSE-CE V			1			
42*	2146300	Wiring Diagram ED-15HSE 208DOM	1					
43*	2146400	Wiring Diagram ED-15HSE 220EXP	1					
44*	2146301	Wiring Diagram Tim Hortons Only		1				
45	2285999	Leg Channel Assembly 15"	2	2	2			
46	F561	10-32 – 3/16 Socket Head Screw	2	2	2			
47	3043207	Knob Hub	2	2	2			
48	3043300	Retaining Spring	2	2	2			
49	3043100	Dial	2	2	2			
50	2139000	Dial Insert	2	2	2			
51	4512224	Dial Kit – Inculdes Items: 46, 47, 48, 49						
52	G01497-1	Bx Connector Straight 3/8"		1				
53	4523405	Power Cord W/L6-30 Plug – Only Available On ED-15THSE - 208 Volts 1/Phase Models Manufactured From Serial # 0803100100956		1		17-Mar-08		

\* NOT ILLUSTRATED

**RECOMMENDED STOCK PARTS**

## ***NOTES***



**GARLAND PARTS IDENTIFICATION**  
**Griddles ED/EDU-15G, ED/EDU-24G, ED/EDU-36G**

ITEM	PART #	DESCRIPTION	MODEL			DATE		CRITICAL
			QUANTITY			FROM	TO	
			ED/EDU-15G	ED/EDU-24G	ED/EDU-36G			
1	2142699	Griddle Assembly 15"	1					
	2220399	15" Grooved Griddle Assembly	1					
	2151097	Griddle Assembly 24"		1				
	2220499	24" Griddle Assy Fully Grooved		1				
	2220498	24" Griddle Assy 12" Grooved LT		1				
	2220497	24" Griddle Assy 12" Grooved RT		1				
	2151197	Griddle Assembly 36"			1			
	2220599	36" Griddle Assy Fully Grooved			1			
	2220597	36" Griddle Assy. 24" Grooved RT			1			
	2220598	36" Griddle Assy. 24" Grooved LT			1			
	2220595	36" Griddle Ass'y 12" Grooved LT			1			
	2220596	36" Griddle Ass'y 12" Grooved RT			1			
2	<b>G01816-1</b>	<b>Element 208V, 3350W</b>	1	2	3			C
	<b>G01816-2</b>	<b>Element 240V, 3350W</b>	1	2	3			C
	<b>G01816-3</b>	<b>Element 220V, 3350W</b>	1	2	3			C
	<b>G01816-4</b>	<b>Element 230 Volts EDU Models Only</b>	1	2	3			C
3	G01884-1-6	Element Clamp	2	4	6			
4	4526300	Superwool 607 Biofriendly Insulation	1	2	3			
5	2142700	Element Cover	1	2	3			
6	G01891-1-6	Bulb Clamp	1	2	3			
7	2155499	Grease Chute Assembly	1	1	1			
8	G01500-1	Ground Terminal 55 Amp	1	1	1			
9	<b>2147300</b>	<b>Terminal Block 3 Circuit</b>	1	1	1			C
	<b>2147302</b>	<b>Terminal Block 3 Circuit Export</b>	1	1	1			C
	<b>2147301</b>	<b>Terminal Block-4 Circuit</b>	1	1	1			C
10	2149400	Door Hinge Right Hand	1	1	1			
	2149401	Door Hinge Left Hand	1	1	1			
11	<b>078174-1</b>	<b>Magnetic Door Catch</b>	1	1	1			C
12	2142800	Grease Tray	1	1	1			
13	<b>2138500</b>	<b>Pilot Amber (Neon Lamp Housing w/AmberLens)</b>	1	2	3			C
17	2147700	Ground Wire	1	1	1			
18	G2674-1	Thermostat G1 150F TO 450F	1	2	3			
19A	078109-2	4" Adjustable Metal Leg	4	4	4			
19B	F157	Leveling Bolt-3/8-16x1 1/16"	4	4	4			
19C*	G01503-10	Leg Weld Nut	4	4	4			
20	2158900	Wire Harness	1					
	2158901	Wire Harness		1				
	2158902	Wire Harness			1			
21	H87	14 Ga Nickel Wire Bare 651ALOY	1	1	1			
22	G2402-3-5	Top Support Prop	1	1	1			
23	G01487-8	Heyco Bushing 11/16 ID	1	2	3			
24	G01487-5	Heyco Bushing 1-5/16 ID	1	1	1			
25*	2139700	Control Panel Clip	2	2	3			

\* NOT ILLUSTRATED

**RECOMMENDED STOCK PARTS**

**GARLAND PARTS IDENTIFICATION**  
**Griddles ED/EDU-15G, ED/EDU-24G, ED/EDU-36G**

ITEM	PART #	DESCRIPTION	MODEL			DATE		CRITICAL
			QUANTITY			FROM	TO	
			ED/EDU-15G	ED/EDU-24G	ED/EDU-36G			
26	2137900	Control Panel	1				6-May-94	
	2349700	Control Panel 15"	1			6-May-94		
	2138000	Control Panel		1			23-Feb-94	
	2349800	Control Panel 24"		1		23-Feb-94		
	2138300	Control Panel			1		23-Feb-94	
	2350100	Control Panel 36"			1	23-Feb-94		
27	2149300	Door Pull	1	1	1			
28	2149299	Door Assembly 15"	1					
	2149297	Door Assembly 24"		1				
	2149295	Door Assembly 36"			1			
29*	2372800	Body Side Stiffener	2	2	2			
30	2180699	Body Side Assy LH Black (Code 9402CG0180)	1	1	1			
	2180698	Body Side Assy LH S/S (Code 9402CG0180)	1	1	1			
	2349498	Body Side Assembly LH (Code 9402CG0181)	1	1	1			
	2349496	Body Side Assembly LH (Code 9402CG0181)	1	1	1			
31	2156300	Tray Cover	1	1	1			
32	2149600	Wireway	1	1	1			
33	2180599	Side Assembly RH (Code 9402CG0180)	1	1	1			
	2180598	Side - Right Assembly S/S (Code 9402CG0180)	1	1	1			
	2349499	Body Side Assembly RH (Code 9402CG0181)	1	1	1			
	2349497	Body Side Assembly RH (Code 9402CG0181)	1	1	1			
34	2180900	Body Back & Bottom	1					
	2180901	Body Back & Bottom S/S	1					
	2181100	Body Back & Bottom (24G)		1				
	2181101	Body Back & Bottom S/S		1				
	2181400	Body Back & Bottom (36G)			1			
	2181401	Body Back & Bottom S/S			1			
35*	2155700	Grease Tray Slide	2	2	2			
36	2156199	Control Shield Assembly	1				3-Mar-94	
	2352299	Control Shield Assembly	1			3-Mar-94		
	2156999	Control Shield Assembly		1			23-Feb-94	
	2352499	Control Shield Assembly		1		23-Feb-94		
	2156699	Control Shield Assembly			1		23-Feb-94	
	2352399	Control Shield Assembly			1	23-Feb-94		
37*	2174500	Joiner Tab	2	2	2			
38	3077101	Garland Nameplate 4 7/8"	1	1	1			
39*	2144500	Wiring Diagram						
40*	2144600	Wiring Diagram						
41*	2144601	Wiring Diagram, EDU-15G-CE VER.						
42*	2144700	Wiring Diagram						
43*	2144800	Wiring Diagram						
44*	2144801	Wiring Diagram, EDU-24G-CE VER						
45*	2144900	Wiring Diagram						
46*	2145000	Wiring Diagram						
47*	2145001	Wiring Diagram, EDU-36G-CE VER						

\* NOT ILLUSTRATED

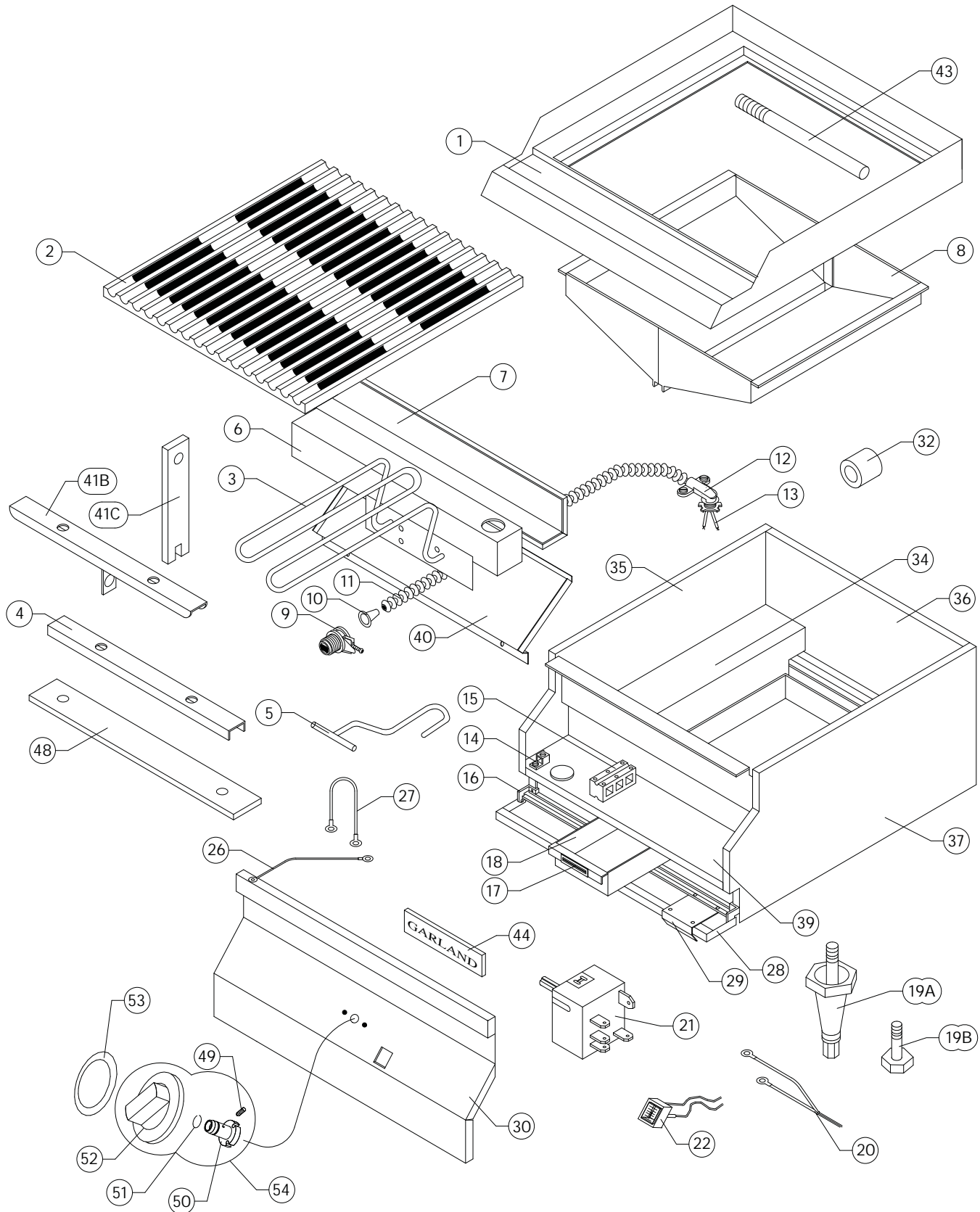
**RECOMMENDED STOCK PARTS**

**GARLAND PARTS IDENTIFICATION**  
**Griddles ED/EDU-15G, ED/EDU-24G, ED/EDU-36G**

ITEM	PART #	DESCRIPTION	MODEL			DATE		CRITICAL
			QUANTITY					
			ED/EDU-15G	ED/EDU-24G	ED/EDU-36G	FROM	TO	
48	2285999	Leg Channel Assembly 15"	2					
	2285997	Leg Channel Assembly 24"		2				
	2285995	Leg Channel Assembly 36"			2			
49	F561	10-32 – 3/16 Socket Head Screw	1	2	3			
50	3043207	Knob Hub	1	2	3			
51	3043300	Retaining Spring	1	2	3			
52	3043100	Dial	1	2	3			
53	2138800	Dial Insert Degrees F	1	2	3			
54	2138801	Dial Insert Degrees C	1	2	3			
55	4512111	Dial Kit – Includes Items: 49, 50, 51, 52, 53						

\* NOT ILLUSTRATED

**RECOMMENDED STOCK PARTS**



ED-15,30,42B BROILERS



**GARLAND PARTS IDENTIFICATION**  
**Broiler ED/EDU-15B, ED/EDU-30B, ED/EDU-42B**

ITEM	PART #	DESCRIPTION	MODEL			DATE		CRITICAL
			QUANTITY			FROM	TO	
			ED/EDU-15B	ED/EDU-30B	ED/EDU-42B			
1	2134899	Main Top Assembly	1					
	2161499	Main Top Assembly		1				
	2165399	Main Top Assembly			1			
2	G0844-1	Broiler Grate	1	2	3			
3	<b>G0875-2</b>	<b>Element Broiler 208V, 1.35KW</b>	2	4	6			C
	<b>G0875-1</b>	<b>Element Broiler 240V, 1.35KW</b>	2	4	6			C
	<b>G0875-4</b>	<b>Element Broiler 220V, 1.35KW - No Longer Available Use Part number G0875-5</b>	2	4	6			C
	<b>G0875-5</b>	<b>Element Assy, 230V, 1350W EDU Models Only</b>	2	4	6			C
4	4526176	Element Clamp	2	4	6			
5	2135799	Grate Handle Assembly	1	1	1			
6	2135400	Element Terminal Box	1	2	3			
7	2135500	Element Terminal Box Cover	1	2	3			
8	2159499	Grease Collector Assembly	1					
	2162199	Grease Collector Assembly		1				
	2165899	Grease Collector Assembly			1			
9	G01497-1	Bx Connector Straight 3/8"	1	2	3			
10	1029600	Antishots # 1	2	4	6			
11	1029400	BX Cable 3/8"	1	2	3			
12	1028500	Connector 3/8" 90 DEG. Romex	1	2	3			
13	2159100	Element Wires	1	2	3			
14	G01500-1	Ground Terminal 55 Amp	1	1	1			
15	<b>2147300</b>	<b>Terminal Block 3 Circuit</b>	1	1	1			C
	<b>2147302</b>	<b>Terminal Block 3 Circuit Export</b>	1	1				C
	<b>2147301</b>	<b>Terminal Block 4 Circuit</b>			1			C
16	2149400	Door Hinge Right Hand	1	1	1			
	2149401	Door Hinge Left Hand	1	1	1			
17	<b>078174-1</b>	<b>Magnetic Door Catch</b>	1	1	1			C
18	2142800	Grease Tray	1	1				
	2222900	Grease Tray			1			
19A	078109-2	4" Adjustable Metal Leg	4	4	4			
19B	F157	Bolt-3/8-16x1 1/16"	4	4	4			
19C*	G01503-10	Leg Weld Nut	4	4	4			
20	2159000	Primary Wires	1					
	2159001	Primary Wires		1				
	2159002	Primary Wires			1			
21	<b>G03185-2</b>	<b>Infinite Switch-240 Volt</b>	1	2	3			C
22	<b>2138504</b>	<b>Pilot Green (Neon Lamp Housing w/Green Lens)</b>	1	2	3			C
26	2147700	Ground Wire	1	1	1			
27	2159101	Element Wires	2	4	6			
28	2149299	Door Assembly 15"	1					
	2149296	Door Assembly 30"		1				
	2149289	Door Assembly 42"			1			
29	2149300	Door Pull	1	1	1			

\* NOT ILLUSTRATED

**RECOMMENDED STOCK PARTS**

**GARLAND PARTS IDENTIFICATION**  
**Broiler ED/EDU-15B, ED/EDU-30B, ED/EDU-42B**

ITEM	PART #	DESCRIPTION	MODEL			DATE		CRITICAL
			QUANTITY					
			ED/EDU-15B	ED/EDU-30B	ED/EDU-42B	FROM	TO	
30	2137900	Control Panel	1				6-May-94	
	2349700	Control 15"	1			6-May-94		
	2138100	Control Panel		1			4-Apr-94	
	2349900	Control Panel 30"		1		4-Apr-94		
	2139400	Control Panel			1		28-Mar-94	
	2350200	Control Panel 42"			1	28-Mar-94		
31*	2139700	Control Panel Clip	2	2	3			
32	G01487-5	Heyco Bushing 1-5/16 ID	1	1	1			
33*	2155700	Grease Tray Slide	2	2	2			
34	2149600	Wireway	1	1	1			
35	2180699	Body Side Assy LH - Black (Code 9402CG0180)	1	1	1			
	2180698	Body Side Assy LH S/S (Code 9402CG0180)	1	1	1			
	2349498	Body Side Assembly LH (Code 9402CG0181)	1	1	1			
	2349496	Body Side Assembly LH (Code 9402CG0181)	1	1	1			
36	2181000	Body Back & Bottom	1					
	2181001	Body Back & Bottom S/S	1					
	2181200	Body Back & Bottom (30B)		1				
	2181201	Body Back & Bottom S/S		1				
	2181500	Body Back & Bottom (42B)			1			
	2181501	Body Back & Bottom S/S			1			
37	2180599	Side Assembly RH (Code 9402CG0180)	1	1	1			
	2180598	Side -Right Assembly S/S (Code 9402CG0180)	1	1	1			
	2349499	Body Side Assembly RH (Code 9402CG0181)	1	1	1			
	2349497	Body Side Assembly RH (Code 9402CG0181)	1	1	1			
38*	22174500	Joiner Tab	2	2	2			
39	2135199	Control Shield Assembly	1				3-Mar-94	
	2352199	Control Shield Assembly	1			3-Mar-94		
	2161699	Control Shield Assembly		1			4-Apr-94	
	2352699	Control Shield Assembly		1		4-Apr-94		
	2165299	Control Shield Assembly			1		3-Mar-94	
	2352799	Control Shield Assembly			1	3-Mar-94		
40	2135600	Shield	1	2	3			
41B	4526178	Prop Hanger	1	2	3			
41C	2436100	Prop	1	2	3			
43	2159800	Grate Stop	1	2	3			
44	3077101	Garland Nameplate 4 7/8"	1	1	1			
45*	2145100	Wiring Diagram ED-15B-Domestic						
	2145200	Wiring Diagram ED-15B-Exp						
	2145201	Wiring Diagram -EDU-15B-CE VER.						
46*	2155300	Wiring Diagram ED-30B-Domestic						
	2145400	Wiring Diagram ED-30B-Exp.						
	2145401	Wiring Diagram -EDU-30B-CE VER.						
47*	2145500	Wiring Diagram ED-42B-Domestic						
	2145600	Wiring Diagram ED-42B-Exp.						
	2145601	Wiring Diagram EDU-42B-CE VER.						

\* NOT ILLUSTRATED

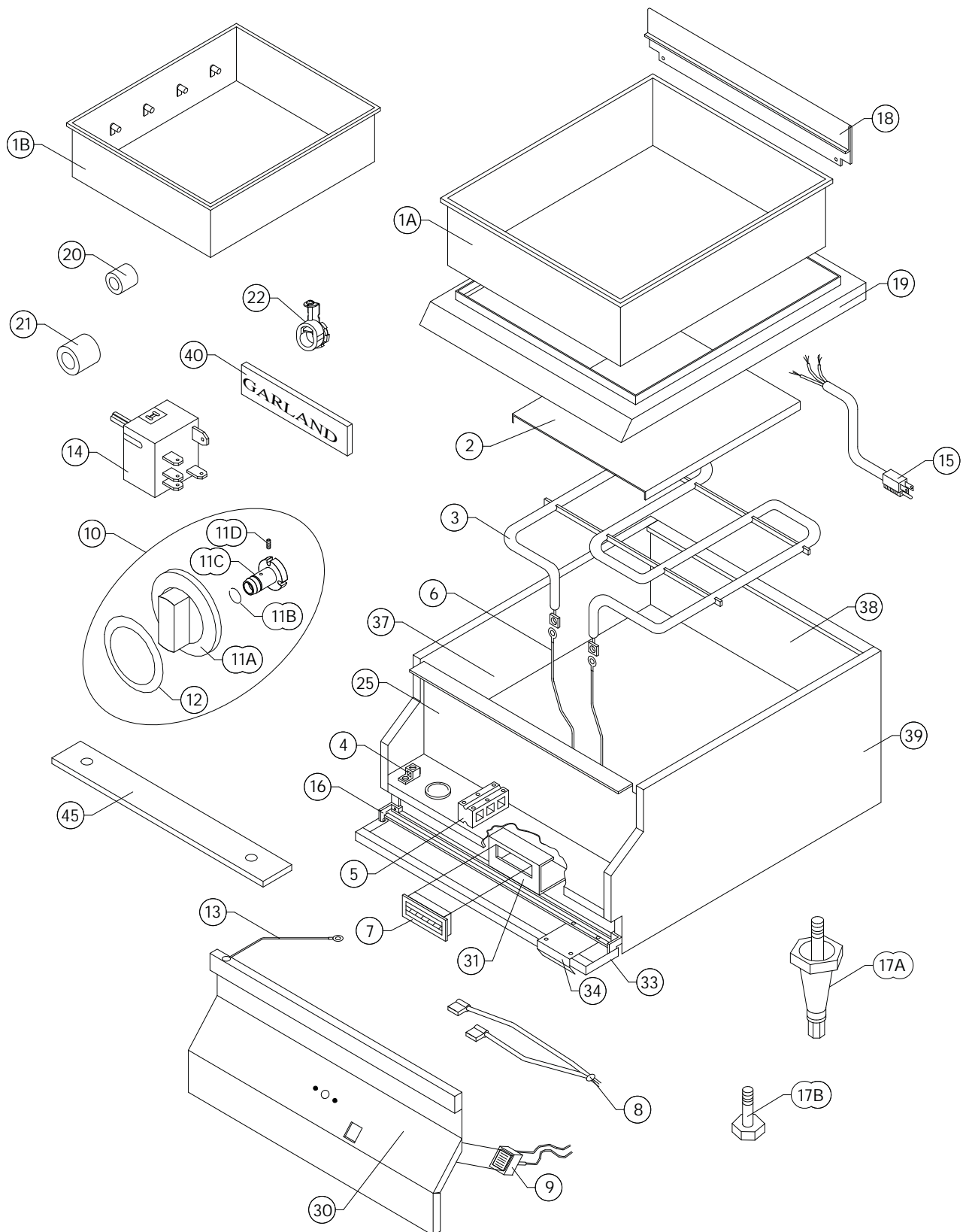
**RECOMMENDED STOCK PARTS**

**GARLAND PARTS IDENTIFICATION**  
**Broiler ED/EDU-15B, ED/EDU-30B, ED/EDU-42B**

ITEM	PART #	DESCRIPTION	MODEL			DATE		CRITICAL
			QUANTITY					
			ED/EDU-15B	ED/EDU-30B	ED/EDU-42B	FROM	TO	
48	2285999	Leg Channel Assembly 15"	2					
	2285996	Leg Channel Assembly 30"		2				
	2285994	Leg Channel Assembly 42"			2			
49	F561	10-32 – 3/16 Socket Head Screw	2	2	2			
50	3043207	Knob Hub	2	2	2			
51	3043300	Retaining Spring	2	2	2			
52	3043100	Dial	2	2	2			
53	2139000	Dial Insert	2	2	2			
54	4512224	Dial Kit – Includes Items: 49, 50, 51, 52						

\* NOT ILLUSTRATED

**RECOMMENDED STOCK PARTS**



**GARLAND PARTS IDENTIFICATION**  
**Food Warmer ED/EDU-15W, ED-15WP**

ITEM	PART #	DESCRIPTION	MODEL		DATE		CRITICAL
			QTY				
			ED/EDU-15W	ED-15WP	FROM	TO	
1A	2186100	Food Warmer Tank	1	1			C
1B	2186199	Food Well With Pan Stop (Tim Hortons Only)		1			C
2	2156400	Element Plate	1	1			
3	G0569-1	Element 120V, 1KW		1			C
	G0569-2	Element 208V, 1KW	1				C
	G0569-3	Element 240V, 1KW	1				C
	G0569-5	Element 230V, 1.1KW EDU Models Only	1				C
4	G01500-1	Ground Terminal 55 Amp	1	1			
5	2147300	Terminal Block 3 Circuit	1	1			
	2147302	Terminal Block 3 Circuit Export					
6	2148300	Element Wires	1	1			
7	078174-1	Magnetic Door Catch	1	1			C
8	2148200	Primary Wires		1			
	2148201	Primary Wires	1				
9	2138504	Pilot Green (Neon Lamp Housing w/Green Lens)	1	1			C
10	4512115	Knob Kit 2138700,2139000 Include Items # 11A, 11B, 11C, 11D & 12	1	1			
11A	3043100	Dial	1	1			
11B	3043300	Retaining Spring	1	1			
11C	3043207	Knob Hub	1	1			
11D	F561	10-32 – 3/16 Socket Head Screw	1	1			
12	2139000	Dial Insert	1	1			
13	2147700	Ground Wire	1	1			
14	G03185-1	Infinite Switch-120 Volt		1			C
	G03185-2	Infinite Switch-240 Volt	1				C
15	4523398	Power Cord 6Ft 3/14Ga 15Amp SJ00W		1			
16	2149400	Door Hinge Right Hand	1	1			
	2149401	Door Hinge Left Hand	1	1			
17A	078109-2	4" Adjustable Metal Leg	4	4			
17B	F157	Leveling Bolt-3/8-16x1 1/16"	4	4			
17C*	G01503-10	Leg Weld Nut	4	4			
18	2168000	Back Splash to 12/07/95	1	1			
	2385500	Back Splash from 12/07/95	1	1			
19	2133700	Main Top	1	1			
20	G01487-8	Heyco Bushing 11/16 ID	1	1			
21	G01487-5	Heyco Bushing 1-5/16 ID	1	1			
22	G01497-1	Bx Connector Straight 3/8"	1	1			
23*	G0577-1-6	Element Baffle Pan	1	1			
24*	1472205	Insulation 17 x 12 x 1	1	1			
25	2133899	Control Shield Assembly	1	1		18-Aug-94	
	2352099	Control Shield Assembly	1	1	18-Aug-94		
26*	079113-1	Fibrebrax 970J 1/8"	1	1			
27*	2133999	Element Tray Assembly	1	1			
28*	2134000	Side Liner	2	2			
29*	2134500	Front Liner	1	1			
30	2137900	Control Panel	1	1		6-May-94	
	2349700	Control Panel 15"	1	1	6-May-94		

\* NOT ILLUSTRATED

**RECOMMENDED STOCK PARTS**

## GARLAND PARTS IDENTIFICATION

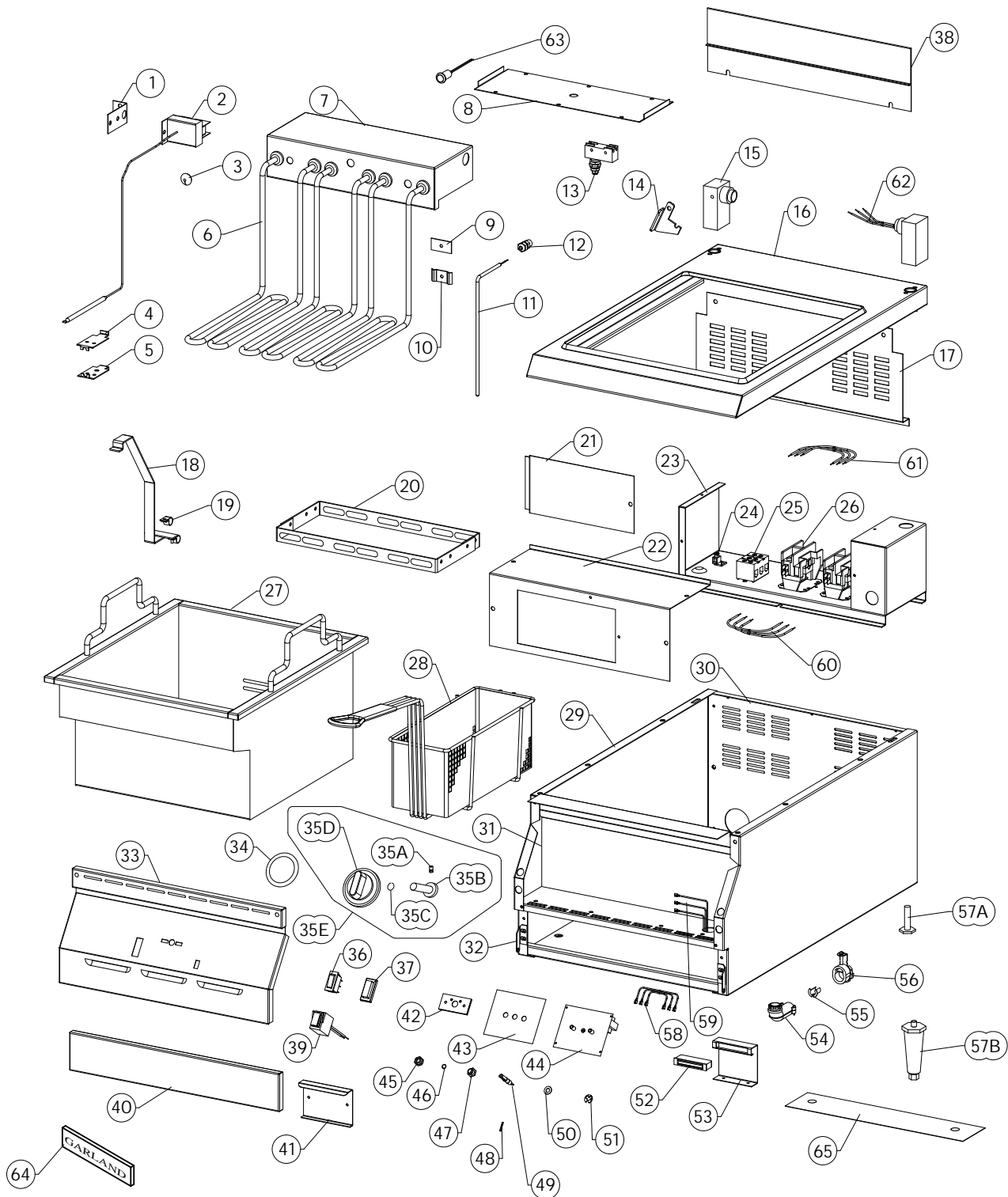
### Food Warmer ED/EDU-15W, ED-15WP

ITEM	PART #	DESCRIPTION	MODEL QTY		DATE		CRITICAL
			ED/EDU-15W	ED-15WP	FROM	TO	
31	2139600	Magnet Mounting Bracket	1	1		7-May-94	
	2183500	Magnet Bracket	1	1	7-May-94		
32*	2139700	Control Panel Clip	2	2			
33	2149299	Door Assembly 15"	1	1			
34	2149300	Door Pull	1	1			
35*	2149600	Wireway	1	1			
36*	2174500	Joiner Tab	2	2			
37	2180699	Side Assembly LH - Black (Code 9402CG0180)	1	1			
	2180698	Side - Left Assembly S/S (Code 9402CG0180)	1	1			
	2349498	Body Side Assembly LH (Code 9402CG0181)	1	1			
	2349496	Body Side Assembly LH (Code 9402CG0181)	1	1			
38	2181000	Body Back & Bottom	1	1			
	2181001	Body Back & Bottom S/S	1	1			
39	2180599	Side Assembly RH (Code 9402CG0180)	1	1			
	2180598	Side - Right Assembly S/S (Code 9402CG0180)	1	1			
	2349499	Body Side Assembly RH (Code 9402CG0181)	1	1			
	2349497	Body Side Assembly RH (Code 9402CG0181)	1	1			
40	3077101	Garland Nameplate 4 7/8"	1	1			
41*	2146500	Wiring Diagram Domestic ED-15W					
42*	2146600	Wiring Diagram Export ED-15W					
43*	2146601	Wiring Diagram EDU-15W CE VER.					
44*	2146700	Wiring Diagram ED-15WP					
45	2285999	Leg Channel Assembly 15"	2	2			

\* NOT ILLUSTRATED

#### **RECOMMENDED STOCK PARTS**

## ***NOTES***



Electric Super Fryer



**GARLAND PARTS IDENTIFICATION**  
**Electric Super Fryer ED-15SF, ED-30SFT, EDU-18-36SF**

ITEM	PART#	DESCRIPTION	MODEL				DATE		CRITICAL
			QUANTITY				FROM	UP TO	
			ED-15SF	ED-30SFT	EDU-18SF	EDU-36SF			
1	2158300	Hi-Limit Mounting Bracket	1	2	1	2			
2	2147600	Hi Limit 430 Degrees F	1	2	1	2			
3	G1155-1	Black PVC Grommet #315-463	1	2	1	2			
4	2160700	Bulb Clamp Top	1	2	1	2			
5	2160899	Bulb Clamp Bottom Assembly	1	2	1	2			
6	<b>2147500</b>	<b>Super Fryer Element 208 Volt</b>	2	6					C
	<b>2147501</b>	<b>Super Fryer Element 220 Volt</b>	3	6					C
	<b>2147502</b>	<b>Supper Fryer Element 230 Volts</b>	3	6	3	6			C
	<b>2147503</b>	<b>Super Fryer Element 230 Volts EDU Model Only - NLA No Longer Used. IMPORTANT NOTE: Use P/N 2185502 Fryer Element 240V in place of P/N 2185503 Fryer Element 230V</b>			3	6			C
7	2158499	Termination Box Assembly	1	2	1	2			
8	2158500	Termination Box cover	1	2					
	2158501	Termination Box Cover CE			1	2			
9	2160499	Clamp Back Assembly	1	2	1	2			
10	2160300	Rtd Clamp	1	2	1	2			
11	<b>2147000</b>	<b>Rtd Sensor-Fryer</b>	1	2	1	2			C
12	2147400	Liquid-Tite Fitting #3444	1	2	1	2			
13	<b>2398600</b>	<b>Switch W/Sealing Cap X01-E1G6</b>			1	2			C
14	2385400	Termination Box Support	1	2	1	2			
15	2157398	End Post Assembly	2	4	2	4			
16	2384999	Main Top Assembly	1						
	2385199	Main Top Assembly		1					
	2384998	Main Top Assembly			1				
	2385198	Main Top Assembly				1			
17	2157800	Rear Shield	1						
	2157801	Rear Shield		1					
	2157802	Rear Shield			1				
	2157803	Rear Shield				1			
18	2160598	Element Lifting Handle	1	2	1	2			
19	F141	Clam-Tube Tinnerman Use GF141	2	4	2	4			
20	2158699	Element Clamp Assembly	1	2	1	2			
21	2176000	Inspection Cover	1	1	1	1			
22	2157900	Contacto Box Cover	1						
	2157700	Contacto Box Cover		1					
	2157901	Contacto Box Cover			1				
	2157701	Contacto Box Cover				1			
23	<b>2158100</b>	<b>Contacto Box</b>	1						C
	<b>2158000</b>	<b>Contacto Box</b>		1					C
	<b>2158101</b>	<b>Contacto Box</b>			1				C
	<b>2158001</b>	<b>Contacto Box</b>				1			C
24	G01500-1	Ground Terminal 55 Amp	1		1				
	G01499-1	Ground Terminal 105A Large SLU-70		1		1			

\* NOT ILLUSTRATED

^ PHOTO AT END

**RECOMMENDED STOCK PARTS**

**GARLAND PARTS IDENTIFICATION**  
**Electric Super Fryer ED-15SF, ED-30SFT, EDU-18-36SF**

ITEM	PART#	DESCRIPTION	MODEL				DATE		CRITICAL
			QUANTITY				FROM	UP TO	
			ED-15SF	ED-30SFT	EDU-18SF	EDU-36SF			
25	2147300	Terminal Block 3 Circuit	1		1				
	G01268-1	Terminal Block #824 Export N.L.A.		3					
	G01268-1	Terminal Block # 824 Export N.L.A.		4					
	G01268-2	Terminal Block # 830 N.L.A.		1					
	G01280-3-7	Terminal Block Channel 3 LUG Domestic N.L.A.		1					
	G01280-4-7	Terminal Block Channel 4 LUG Export N.L.A.		1					
	2694800	Export Terminal Block (5)				1			
26	<b>077062-1</b>	<b>Contactor, 3 Pole, 220V Coil, 30Amp</b>	2	4	2	4			C
27	<b>2133599</b>	<b>Fry-Tank Assembly</b>	1	2	1	2			C
28	<b>G02700-3</b>	<b>Fryer Basket Twin RH</b>	1	2	1	2			C
	<b>G02700-4</b>	<b>Fryer Basket Twin LH</b>	1	2	1	2			C
	G02701-2	Fryer Basket Single	Optional						
29	2180699	Body Side Assembly LH - Black (Code 9402CG0180)	1	1	1	1			
	2180698	Body Side Assembly LH S/S (Code 9402CG0180)	1	1	1	1			
	2180599	Side Assembly RH (Code 9402CG0180)	1	1	1	1			
	2180598	Side - Right Assembly S/S (Code 9402CG0180)	1	1	1	1			
	2349499	Body Side Assembly RH (Code 9402CG0181)	1	1	1	1			
	2349498	Body Side Assembly LH (Code 9402CG0181)	1	1	1	1			
	2349497	Body Side Assembly RH (Code 9402CG0181)	1	1	1	1			
	2349496	Body Side Assembly LH (Code 9402CG0181)	1	1	1	1			
30	2180899	Body Back & Bottom Assy (15F)	1						
	2180898	Body Back & Bottom S/S	1						
	2181399	Body Back & Bottom Assy (30FT)		1					
	2182398	Body Back & Bottom S/S		1					
	2180897	Body Back & Bottom Assembly 18" W.C.			1				
	2180896	Body Back & Bottom Assembly S/S			1				
	2181397	Back and Bottom Assembly				1			
	2181396	Back and Bottom Assembly				1			
31	2351900	Control Shield	1						
	2352500	Control Shield		1					
	2351902`	Control Shield			1				
	2352502	Control Shield				1			
32	2149400	Door Hinge Right Hand	1	1	1	1			
	2149401	Door Hinge Left Hand	1	1	1	1			
33	2349500	Control Panel	1						
	2350000	Control Panel		1					
	2349501	Control Panel			1				
	2350001	Control Panel				1			
34	2138900	Dial Insert F/ED-15F, 30F (F) 200-375	1	2	1	2			
	2138901	Dial Insert F/ED-15FE, 30FE (C) 95-192	1	2	1	2			
35A	F561	10-32 – 3/16 Socket Head Screw	1	2	1	2			
35B	3043207	Knob Hub	1	2	1	2		27-Jan-10	
	3043208	Hub 1/4" Not Flat SN: 1001100100982, MD: ED15F-0008					27-Jan-10		
35C	3043300	Retaining Spring	1	2	1	2			
35D	3043100	Dial	1	2	1	2			

\* NOT ILLUSTRATED

^ PHOTO AT END

**RECOMMENDED STOCK PARTS**

# GARLAND PARTS IDENTIFICATION

## Electric Super Fryer ED-15SF, ED-30SFT, EDU-18-36SF

ITEM	PART#	DESCRIPTION	MODEL				DATE		CRITICAL
			QUANTITY				FROM	UP TO	
			ED-15SF	ED-30SFT	EDU-18SF	EDU-36SF			
35E	4512224	Dial Kit – Includes Items: 35A, 35B, 35C, 35D	1	2	1	2		27-Jan-10	
	4527733	ED-Fryer Knob Assy SN: 1001100100982, MD: ED15F-0008 Note: P/N 4527733 Also Used On Older Equipment Equipped With New T-Stat Conversion Kit-ED Fryers, P/N 4527731					27-Jan-10		
36^	2146800	Illuminated Power Switch	1	2	1	2			
37^	3011400	PVC Clear Cap c/w Black Bezel			1	2			
38	2385500	Back Splash	1						
	2385600	Back Splash		1					
	2385501	Back Splash			1				
	2385601	Back Splash 36"				1			
39	<b>2138500</b>	<b>Pilot Amber (Neon Lamp Housing w/Amber Lens)</b>	1	2	1	2			C
40	2149299	Door Assembly 15"	1						
	2149296	Door Assembly 30"		1					
	2149298	Door Assembly 18"			1				
	2149295	Door Assembly 36"				1			
41	2149300	Door Pull	1	1	1	1			
42	2491500	Stop Plate Assembly	1	2	1	2		27-Jan-10	
	4527806	Mechanical Limiter Plate ED-Fryers					28-Jan-10		
43	2159300	Insulator - Thermostat	1	2	1	2			
44	<b>2142000</b>	<b>Electronic Thermostat 200-375 F</b>	1	2	1	2		27-Jan-10	C
		<b>Note #1:</b> P/N 2142000 NLA - Thermostat Conversion Kit P/N 4527731 is now required. Kit includes new T-Stat P/N 4527081, Knob assembly with hardware and, installation instructions. <b>Note #2:</b> New Thermostat P/N 4527081 was implemented from Jan-28-2010, serial# 1001100100982, model# ED-15F-0008. Thermostat Conversion Kit P/N 4527731 can also be used for equipment manufactured after Jan-28-2010.							
45	2358200	Shaft Seal N9030 x 1/4	1	2	1	2		27-Jan-10	
46	2382800	Shaft Retaining Spring	1	2	1	2		27-Jan-10	
47	2167300	Panel Bearing Assembly	1	2	1	2		27-Jan-10	
48	2167000	Spring Tension Pin	1	2	1	2		27-Jan-10	
49	2166800	Potentiometer Shaft	1	2	1	2		27-Jan-10	
50	2167100	Bowed Spring Washer	1	2	1	2		27-Jan-10	
51	2167200	Retaining Ring	1	2	1	2		27-Jan-10	
52	<b>078174-1</b>	<b>Magnetic Door Catch</b>	1	1	1	1			C
53	2139600	Magnet Mounting Bracket To 5/07/91	1	1	1	1			
	2183500	Magnet Bracket From 5/07/91	1	1	1	1			
54	1028500	Connector 3/8" 90 Deg. Romex	1	2	1	2			
55	1029600	Antishorts # 1	2	4	2	4			
56	G01497-1	Bx Connector Straight 3/8"	1	2	1	2			
57A	F157	Leveling Bolt-3/8-16x1 1/16"	4	4	4	4			
57B	078109-2	Metal Leg (Optional)	4	4	4	4			
57C*	G01503-10	Leg Weld Nut	4	4	4	4			
58	2169200	Panel Control Wire F/FED 15F, 30F	1	2	1	2			

\* NOT ILLUSTRATED

^ PHOTO AT END

**RECOMMENDED STOCK PARTS**

**GARLAND PARTS IDENTIFICATION**  
**Electric Super Fryer ED-15SF, ED-30SFT, EDU-18-36SF**

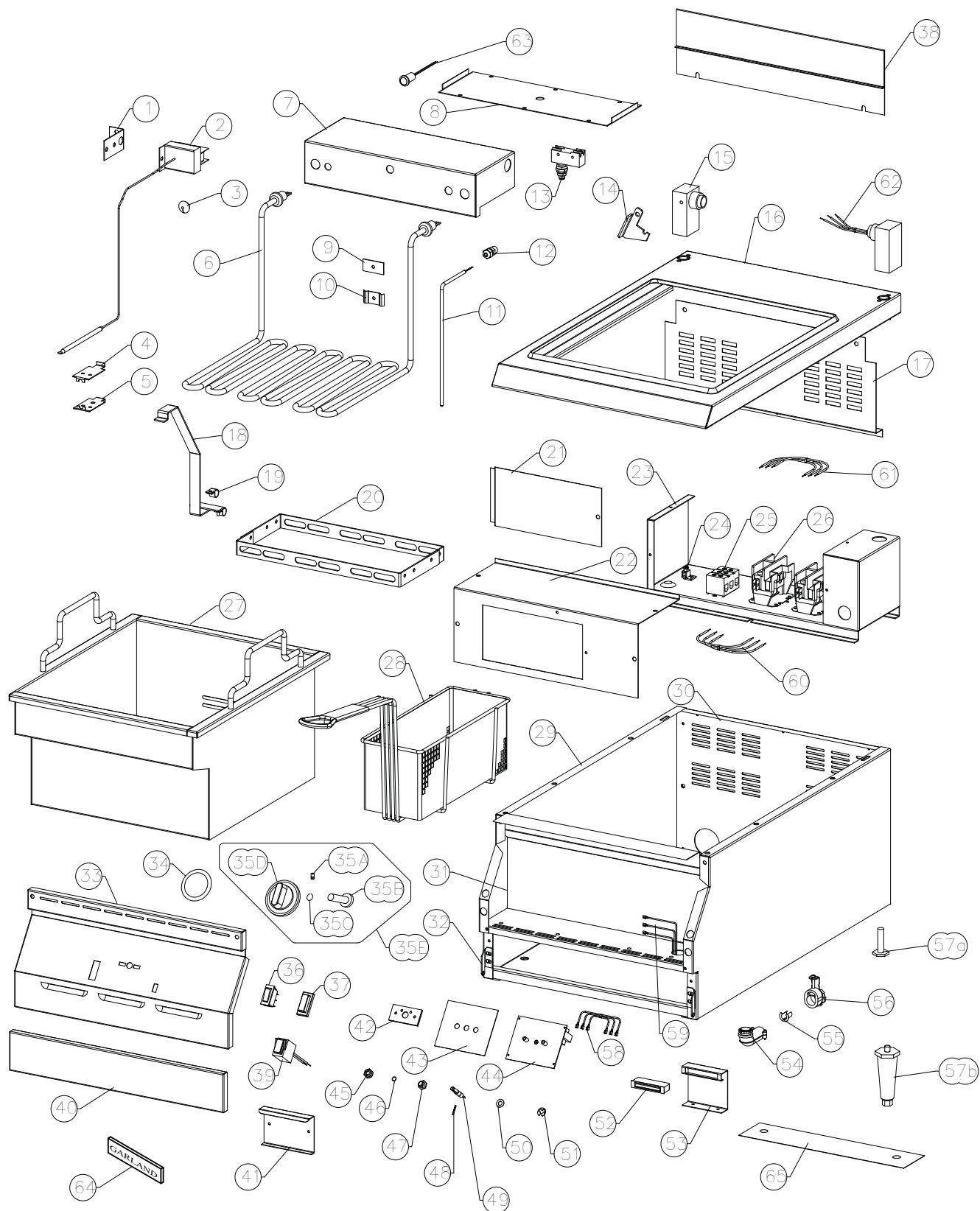
ITEM	PART#	DESCRIPTION	MODEL				DATE		CRITICAL
			QUANTITY				FROM	UP TO	
			ED-15SF	ED-30SFT	EDU-18SF	EDU-36SF			
59	2169100	Contact Control Wire F/ED-15F	1						
	2170500	Contact Control Wire F/ED-30F		1					
	2169101	Control Wires - Contactor			1				
	2170501	Control Wires - Contactor				1			
60	2168800	Contact Jumper F/ED-15F-30F Export	1	2	1				
	2168801	Contact Jumper				2			
	2169900	Contact Jumper F/ED-30F Domestic		1					
61	2168700	Contact Wire F/ED-15F Domestic	1						
	2168701	Contact Wire F/ED-15F Export	1		1				
	2169900	Contact Wire F/ED-30F Domestic		1					
	2169901	Contact Wires F/ED-30F Export		1		1			
62	2168900	Left End Post Wire F/ED-15F Domestic	1						
	2168901	Left End Post Wire F/ED-15F Export	1						
	2168902	Left End Post Wires Harness			1				
	2169000	Right End Post Wire F/ED-15F Domestic	1						
	2169001	Right End Post Wire F/ED-15F Export	1		1				
	2170100	LF Left End Post Wire F/ED-30F Domestic		1					
	2170101	LF Left End Post Wire EXPED30F Export		1					
	2170102	LF Left End Post Wires Harness				1			
	2170200	LF Right End Post Wire F/ED30F Domestic		1					
	2170201	LF Right End Post Wire F/ED30F Export		1		1			
	2170300	RF Left End Post Wire F/ED-30F Domestic		1					
	2170301	RF Left End Post Wire F/ED-30F Export		1					
	2170302	RF Left End Post Wire Harness				1			
	2170400	RF Right End Post Wire F/ED30F Domestic		1					
	2170401	Right End Post Wire F/ED30F Export		1		1			
63	<b>G01296-1</b>	<b>Pilot Red 240V</b>			1	1			C
64	3077101	Garland Nameplate 4 7/8"	1	1	1	1			
65	2285999	Leg Channel Assembly 15"	2						
	2285998	Leg Channel Assembly 18"			2				
	2285996	Leg Channel Assembly 30"		2					
	2285995	Leg Channel Assembly 36"				2			
66*	2145700	Wiring Diagram	ED-15SF-DOM						
	2145800	Wiring Diagram	ED-15SE-EXP						
67*	2145900	Wiring Diagram	ED-30SF-DOM						
	2144600	Wiring Diagram	ED-30SF-Exp						
68*	2145801	Wiring Diagram	EDU-18SF						
69*	2146001	Wiring Diagram	EDU-36SF						

\* NOT ILLUSTRATED

^ PHOTO AT END

**RECOMMENDED STOCK PARTS**

## ***NOTES***



Electric Fryer

**GARLAND PARTS IDENTIFICATION**  
**Electric Fryer ED-15F,ED-30FT, EDU-18-36FT**

ITEM	PART#	DESCRIPTION	MODEL				DATE		CRITICAL
			QUANTITY				FROM	UP TO	
			ED-15F	ED-30FT	EDU-18F	EDU-36FT			
1	2158300	Hi-Limit Mounting Bracket	1	2	1	2			
2	2147600	Hi Limit 430 Degrees F	1	2	1	2			
3	G1155-1	Black PVC Grommet # 315-463	1	2	1	2			
4	2160700	Bulb Clamp Top	1	2	1	2			
5	2160899	Bulb Clamp Bottom Assembly	1	2	1	2			
6	<b>2185500</b>	<b>Fryer Element, 208V 5.3 kW</b>	1	2	1	2			C
	<b>2185501</b>	<b>Fryer Element, 220V 5.929 kW</b>	1	2	1	2			C
	<b>2185502</b>	<b>Fryer Element, 240V 5.3 kW</b>	1	2	1	2			C
	<b>2185503</b>	<b>Fryer Element, 230V 5.3 kW EDU Model Only</b>			1	2			C
7	2158499	Termination Box Assembly	1	2	1	2			
8	2158500	Termination Box Cover	1	2					
	2158501	Termination Box Cover CE			1	2			
9	2160499	Clamp Back Assembly	1	2	1	2			
10	2160300	Rtd Clamp	1	2	1	2			
11	<b>2147000</b>	<b>Rtd Sensor-Fryer</b>	1	2	1	2			C
12	2147400	Liquid-Tite Fitting #3444	1	2	1	2			
13	<b>2898600</b>	<b>Switch W/Sealing Cap X01-E-1G6</b>			1	2			C
14	2385400	Termination Box Support	1	2	1	2			
15	2157398	End Post Assembly	2	4	2	4			
16	2384999	Main Top Assembly	1						
	2385199	Main Top Assembly		1					
	2384998	Main Top Assembly			1				
	2385198	Main Top Assembly				1			
17	2157800	Rear Shield	1						
	2157801	Rear Shield		1					
	2157802	Rear Shield			1				
	2157803	Rear Shield				1			
18	2160598	Element Lifting Handle	1	2	1	2			
19	F141	Clamp-Tube Timmerman Use GF141	2	4	2	4			
20	2158699	Element Clamp Assembly	1	2	1	2			
21	2176000	Inspection Cover	1	1	1	1			
22	2157900	Contactor Box Cover	1						
	2157700	Contactor Box Cover		1					
	2157901	Contactor Box Cover			1				
	2157701	Contactor Box Cover				1			
23	<b>2158100</b>	<b>Contactor Box</b>	1						C
	<b>2158000</b>	<b>Contactor Box</b>		1					C
	<b>2158101</b>	<b>Contactor Box</b>			1				C
	<b>2158001</b>	<b>Contactor Box</b>				1			C
24	G01500-1	Ground Terminal 55 Amp	1		1				
	G10499-1	Ground Terminal 105A Large SLU-70		1		1			
25	2147300	Terminal Block circuit	1						
	G01268-1	Terminal Block # 824 Export N.L.A.		3					
	G01268-1	Terminal Block # 824 Export N.L.A.		4					
	G01268-2	Terminal Block End #830 N.L.A.		1					
	G01280-3-7	Terminal Block Channel 3 LUG Domestic N.L.A.		1					
	G01280-4-7	Terminal Block Channel 4 LUG Export N.L.A.		1					
	2694800	Terminal Block Assembly				1			

\* NOT ILLUSTRATED

^ PHOTO AT END

**RECOMMENDED STOCK PARTS**



**GARLAND PARTS IDENTIFICATION**  
**Electric Fryer ED-15F,ED-30FT, EDU-18-36FT**

ITEM	PART#	DESCRIPTION	MODEL				DATE		CRITICAL
			QUANTITY						
			ED-15F	ED-30FT	EDU-18F	EDU-36FT	FROM	UP TO	
26	2186900	Contactor Single Pole	2	4	2	4			C
27	2133599	Fry-Tank Assembly	1	2	1	2			C
28	G02700-3	Fryer Basket Twin RH	1	2	1	2			C
	G02700-4	Fryer Basket Twin LH	1	2	1	2			C
	G02701-2	Fryer Basket Single	Optional						
29	2180699	Body Side Assembly LH - Black (Code 9402CG0180)	1	1	1	1			
	2180698	Body Side Assembly LH S/S (Code 9402CG0180)	1	1	1	1			
	2180599	Side Assembly RH (Code 9402CG0180)	1	1	1	1			
	2180598	Side - Right Assembly S/S (Code 9402CG0180)	1	1	1	1			
	2348499	Body Side Assembly RH (Code 9402CG0181)	1	1	1	1			
	2349498	Body Side Assembly LH (Code 9402CG0181)	1	1	1	1			
	2349497	Body Side Assembly RH (Code 9402CG0181)	1	1	1	1			
	2349496	Body Side Assembly LH (Code 9402CG0181)	1	1	1	1			
30	2180899	Body Back & Bottom Assembly (15F)	1						
	2180898	Body Back & Bottom Assembly S/S	1						
	2181399	Body Back & Bottom Assembly (30FT)		1					
	2181398	Body Back & Bottom Assembly S/S		1					
	2180897	Body Back & Bottom Assembly 18"W.C.			1				
	2180896	Body Back & Bottom Assembly S/S			1				
	2181397	Back and Bottom Assembly W.C.				1			
31	2181396	Back and Bottom Assembly S/S				1			
	2351900	Control Shield	1						
	2352500	Control Shield		1					
	2351902	Control Shield			1				
32	2352502	Control Shield				1			
	2149400	Door Hinge Right Hand	1	1	1	1			
33	2149401	Door Hinge Left Hand	1	1	1	1			
	2349500	Control Panel	1						
	2350000	Control Panel		1					
	2349501	Control Panel			1				
34	2350001	Control Panel				1			
	2138900	Dial Insert F/ED-15, 30F (F) 300-375	1	2	1	2			
	2138901	Dial Insert F/ED-15FE, 30FE (C) 95-192	1	2	1	2			
35A	F561	10 23 - 3/16 Socket Head Screw	1	2	1	2			
35B	3043207	Knob Hub	1	2	1	2		27-Jan-10	
	3043208	Hub 1/4" Not Flat SN: 1001100100982, MD: ED15F-0008					27-Jan-10		
35C	3043300	Retaining Spring	1	2	1	2			
35D	3043100	Dial	1	2	1	2			
35E	4512224	Dial Kit – Includes Items: 35A, 35B, 35C, 35D	1	2	1	2		27-Jan-10	
	4527733	ED-Fryer Knob Assy SN: 1001100100982, MD: ED15F-0008 Note: P/N 4527733 Also Used On Older Equipment Equipped With New T-Stat Conversion Kit-ED Fryers, P/N 4527731					27-Jan-10		
36^	2146800	Illuminated Power Switch	1	2	1	2			
37^	3011401	PVC Clear Cap c/w Black Bezel			1	2			

\* NOT ILLUSTRATED

^ PHOTO AT END

**RECOMMENDED STOCK PARTS**



**GARLAND PARTS IDENTIFICATION**  
**Electric Fryer ED-15F,ED-30FT, EDU-18-36FT**

ITEM	PART#	DESCRIPTION	MODEL				DATE		CRITICAL
			QUANTITY				FROM	UP TO	
			ED-15F	ED-30FT	EDU-18F	EDU-36FT			
38	2385500	Back Splash	1						
	2385600	Back Splash		1					
	2385501	Back Splash			1				
	2385601	Back Splash 36"				1			
39	2138500	<b>Pilot Amber (Neon Lamp Housing w/Amber Lens)</b>	1	2	1	2			C
40	2149299	Door Assembly 15"	1						
	2149292	Door Assembly 30"		1					
	2149298	Door Assembly 18"			1				
	2149295	Door Assembly 36"				1			
41	2149300	Door Pull	1	1	1	1			
42	2491500	Stop Plate Assembly	1	1	1	1		27-Jan-10	
	4527806	Mechanical Limiter Plate ED-Fryers					28-Jan-10		
43	2153900	Insulator - Thermostat	1	2	1	2			
44	2142000	<b>Electronic Thermostat 200-375 F</b>	1	2	1	2		27-Jan-10	C
		<b>Note #1:</b> P/N 2142000 NLA - Thermostat Conversion Kit P/N 4527731 is now required. Kit includes new T-Stat P/N 4527081, Knob assembly with hardware and, installation instructions. <b>Note #2:</b> New Thermostat P/N 4527081 was implemented from Jan-28-2010, serial# 1001100100982, model# ED-15F-0008. Thermostat Conversion Kit P/N 4527731 can also be used for equipment manufactured after Jan-28-2010.							
45	2358200	Shaft Seal N9030 x 1/4	1	2	1	2			
46	2382800	Shaft Retaining Spring	1	2	1	2			
47	2167300	Panel Bearing Assembly	1	2	1	2			
48	2167000	Spring Tension Pin	1	2	1	2			
49	2166800	Potentiometer Shaft	1	2	1	2			
50	2167100	Bowed Spring Washer	1	2	1	2			
51	2167200	Retainer Ring	1	2	1	2			
52	<b>078174-1</b>	<b>Magnetic Door Catch</b>	1	1	1	1			C
53	2139600	Magnet Mounting Bracket To 05/07/91	1	1	1	1			
	2183500	Magnet Bracket From 05/07/91	1	1	1	1			
54	1028500	Connector 3/8" 90 Deg Romex	1	2	1	2			
55	1029600	Antishorts # 1	2	4	2	4			
56	G1497-1	Bx Connector Straight 3/8"	1	2	1	2			
57A	F57	Bolt-3/8-16x 1 1/16"	4	4	4	4			
57B	0780109-2	Metal Leg (Optional)	4	4	4	4			
57C*	G010503-G	Leg Weld Nut	4	4	4	4			
58	2169200	Panel Control Wire F/ED 15F, 30F	1	2	1	2			
59	2169100	Contactor Control Wire F/ED-15F	1						
	2170500	Contactor Control Wire F/ED-30F		1					
	2169101	Control Wires - Contactor			1				
	2170501	Control Wires - Contactor				1			
60	2168800	Contactor Jumper F/ED-15, 30F Export	1	2					
	2168801	Contactor Jumper			1	2			
61	2184801	Contactor Wires	1						
	2184803	Contactor Wires	1		1				
	2184800	Contactor Wires		1					
	2184802	Contactor Wires		1		1			

\* NOT ILLUSTRATED

^ PHOTO AT END

**RECOMMENDED STOCK PARTS**

**GARLAND PARTS IDENTIFICATION**  
**Electric Fryer ED-15F,ED-30FT, EDU-18-36FT**

ITEM	PART#	DESCRIPTION	MODEL				DATE		CRITICAL
			QUANTITY						
			ED-15F	ED-30FT	EDU-18F	EDU-36FT	FROM	UP TO	
62	2184900	Left End Post Wires	1						
	2184901	Left End Post Wire Harness			1				
	2185000	Right End Post Wires	1						
	2185001	Right End Post Wires	1		1				
	2185100	L.F. Left End Post Wires		1					
	2185101	L.F. Left End Post Wires Harness				1			
	2185200	L.F. Right End Post Wires		1					
	2185201	L.F. Right End Post Wires		1		1			
	2185300	R.F Left End Post Wires		1					
	2185301	R.F. Left End Post Wires Harness				1			
	2185400	R.F. Right End Post Wires		1					
	2185401	R.F. Right End Post Wires		1		1			
63	<b>G01296-1</b>	<b>Pilot Red 240V</b>			1	2			C
64	3077101	Garland Nameplate 4 7/8"	1	1	1	1			
65	2285999	Leg Channel Assembly 15"	2						
	2285998	Leg Channel Assembly 18"			2				
	2285996	Leg Channel Assembly 30"		2					
	2285995	Leg Channel Assembly 36"				2			
66*	2184400	Wiring Diagram	ED-15 - Dom						
	2184500	Wiring Diagram	ED-15F - Exp						
67*	2184600	Wiring Diagram	ED-30F - Dom						
	2184700	Wiring Diagram	ED-30F- Exp						
68*	2184501	Wiring Diagram	EDU-18F						
	2184701	Wiring Diaaam	EDU-36F						

\* NOT ILLUSTRATED

^ PHOTO AT END

**RECOMMENDED STOCK PARTS**



2146800  
ILUMINATED POWER SWITCH



3011400  
PVC CLEAR CAP C/W BLACK BEZEL

## GARLAND PARTS IDENTIFICATION

### Revision History

REV. #	PAGE #	ITEM #	NOTE	DATE
14	Entire Book		Critical Column Added	Mar 17/08
	8		New Drawing	
	10	52, 53	New Part Numbers Added	
15	10	53	Serial Number Added	Mar 28/08
16	24, 30		New Drawing	Apr 03/08
	26	38	Part Number Added	
	32			
17	21	15	New Part Number – Was G2840-1 (Cord & Plug Set 3/14 Wire 15A)	Jul 11/08
18	13	4	Part # changed - was 0791130-1 (Fibrebrax 970J 1/8")	Oct 18/10
	16		New drawing	
	17	3	Part # G0875-4 no longer available	
		4	Part # changed - was G0857-1-9	
			Quantity changed	
	18	40	Item now illustrated	
		41A	New part number added	
		41B	Item # changed - was 41	
			Part # changed - was 2426000	
		41C	Item # changed - was 42	
	25	6	Note added into description	
	26,32	35B	Part number 3043208 added - Dates added	
		35E	Part number 4527733 added - Dates added	
	27	"45,46,47,48 49,50,51"	"Used Up To" date added	
	27,32	42	Part number 4527806 added - Dates added	
		44	Note added into description	
19	18	41A	Part number removed - was CK140 (Prop Kit)	Nov 1/10
	26	26	Revised p/n and description of contactor.	Feb 9/12

## ***NOTES***

## ***NOTES***

## ***NOTES***

