

SLDG800



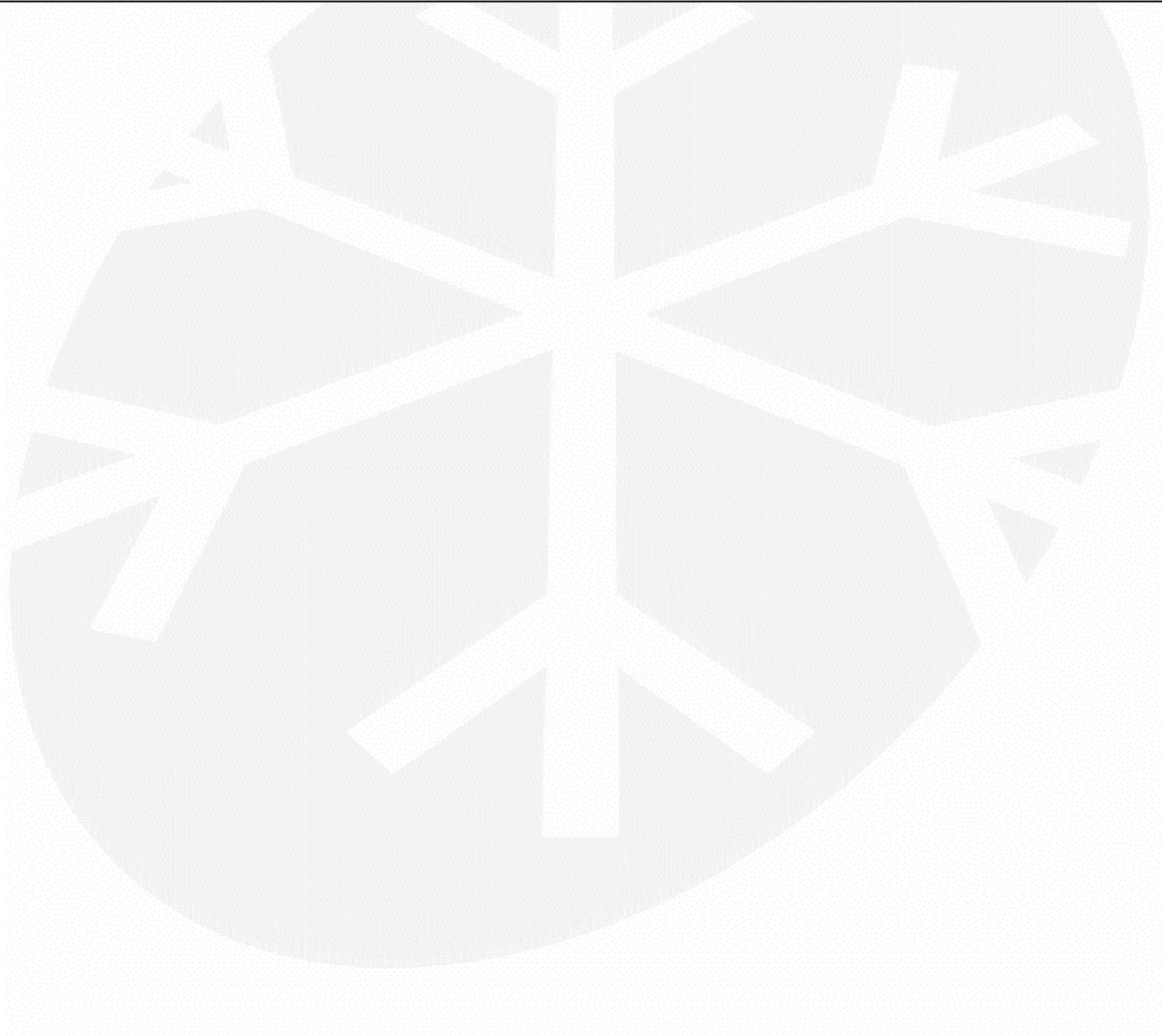
04-05-2011

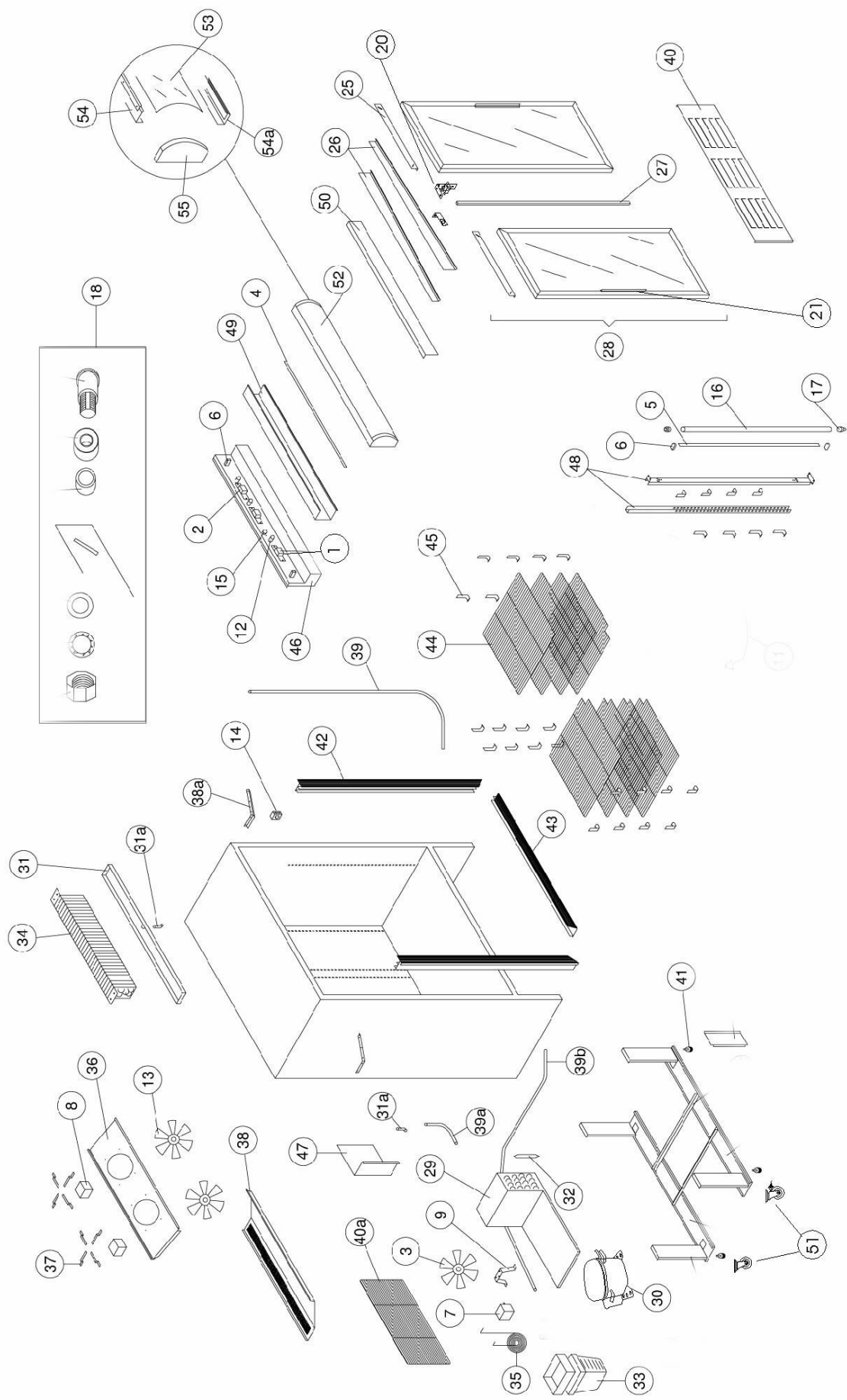
POS.	PART NO	ITEM	EUR	DKK
1	9130102201	BALLAST 30W	3,76	28
1	9130102201	BALLAST 30W	3,76	28
2	9110102202	BALLAST 40W	5,38	40
2	9110102202	BALLAST 40W	5,38	40
3	9110102203	FAN BLADE COND.MOTOR	4,03	30
4	9130102204	FLOURESCENT TUBES 30W	2,96	22
5	9110102205	FLOURESCENT TUBES 36W	2,96	22
6	9110102206	FLUOR.TUBE HOLDER, CANOPY	0,81	6
7	9110102207	COND.FAN MOTOR 16W/CA03-22	14,25	106
8	9110102208	EVAPORATOR FAN MOTOR/CF01-25	17,07	127
9	9110102209	FAN BRACKET COND.MOTOR	2,28	17
12	9110102212	STARTER & SOCKET	1,75	13
13	9140102210	FAN BLADE EVAP MOTOR	4,03	30
14	9110102214	TEMP.GAUGE MECHANICAL	6,18	46
15	9110102215	BEV.THERMOSTAT MECH	11,02	82
16	9110102216	PROTECT-A-LITE TUBE	3,36	25
17	9110102217	TUBE END CAPS WHITE	0,40	3
18	9110102218	ROLLER BRG COMPLETE	4,97	37
25	9130102225	GALV HANGER, RIGHT	4,30	32
25	9130102226	GALV HANGER, LEFT	4,30	32
26	9130102227	GALV RUNNER, RIGHT	6,72	50
26	9130102228	GALV RUNNER, LEFT	6,72	50
27	9110102262	SPONGE SEAL	2,15	16
28	9130102230	DOOR ASSY, RIGHT	61,83	460
28	9130102229	DOOR ASSY, LEFT	61,83	460
29	9110102231	CONDENSOR COIL	38,58	287
30	9110102232	COMPRESSOR 3/8 HP	107,93	803
31	9130102233	EVAP DRIP TRAY ASS	6,59	49
31A	9140102250	DRAIN PLUG	1,48	11
32	9110102234	DRIER PENCIL TYPE 40G	2,42	18
33	9110102235	EVAPORATION PAN ASSY	13,04	97
34	9130102236	EVAPORATOR COIL	63,17	470
35	9110102237	EVAP COIL NICKEL PLATED	7,80	58
36	9110102238	FAN COVER EVAP MOTOR	7,26	54
37	9110102239	BRACKET EVAP F/MOTOR	1,08	8
38	9130102242	EVAP COVER	8,74	65
38A	9140102238	BRACKET EVAP COVER	1,08	8
39	9140102242	DRAIN PIPE WHITE INTERNAL	1,34	10
39A	9140102243	DRAIN PIPE BLACK PAN	1,34	10
39B	9140102244	DRAIN PIPE BLACK OVERFLOW	1,34	10
40	9130102241	GRILL	19,89	148
40A	9130102243	WIRE GRILL	8,74	65
41	9110102243	LEVELLING FEET 8MM	0,40	3
42	9110102244	E SECTION SIDES	9,01	67
43	9130102245	E SECTION BOTTOM	5,65	42
44	9130102246	SHELF, RIGHT	15,05	112
44	9130102247	SHELF, LEFT	15,05	112
45	9110102248	SHELF HOOK METAL	0,67	5
46	9130102249	LIGHT BOX	13,98	104
47	9110102250	INNER CHANNEL	4,57	34
48	9110102251	CENTRE POST FRONT ASSY	6,99	52
49	9130102252	CE COVER PLATE ELECTRICAL PANE	4,57	34

50	9130102253	DEFLECTOR PANEL	2,02	15
51	9110102260	CASTORS WITH BOLTS	14,78	110
51	9110102261	CASTORS W.BRAKE AND BOLTS	18,15	135
52	9130102255	CANOPY	28,23	210
53	9130102256	UHI OPAL DISPLAY	11,69	87
55	9110102256	END CAP PLASTIC LEFT	2,02	15
55	9110102257	END CAP PLASTIC RIGHT	2,02	15

Ved køb af reservedele under 1.000,00 kr. / 135,00 Euro, vil der blive afregnet et ekspeditionsgebyr på 150,00 kr. / 20,00 Euro, pr. gang.

For spare parts orders under the amount of 1.000,00 DKK / 135,00 EUR, a handling charge of 150,00 DKK / 20,00 EUR will be added for each delivery.





080927

Explode SLDG800

TEFCOLD

