



**DANUBE  
INTERNATIONAL**

*MANUEL TECHNIQUE*

*TECHNICAL MANUAL*

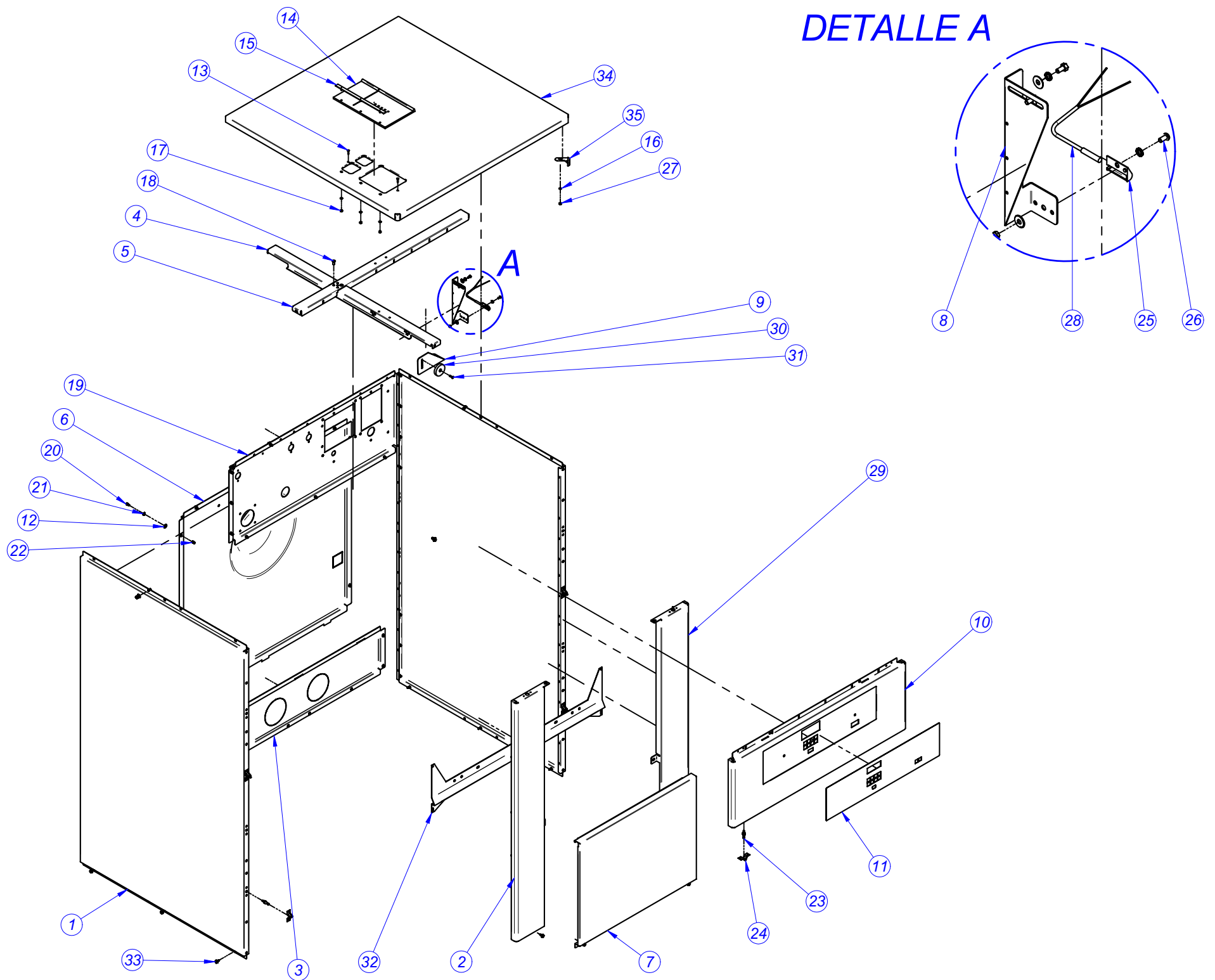
*MANUAL TECNICO*

**FOR...**

**.....K ED10-13-18**

**(VERSION « AS TEC WED10-13-18.& DU 2\* #\$, #8%**

# DETALLE A



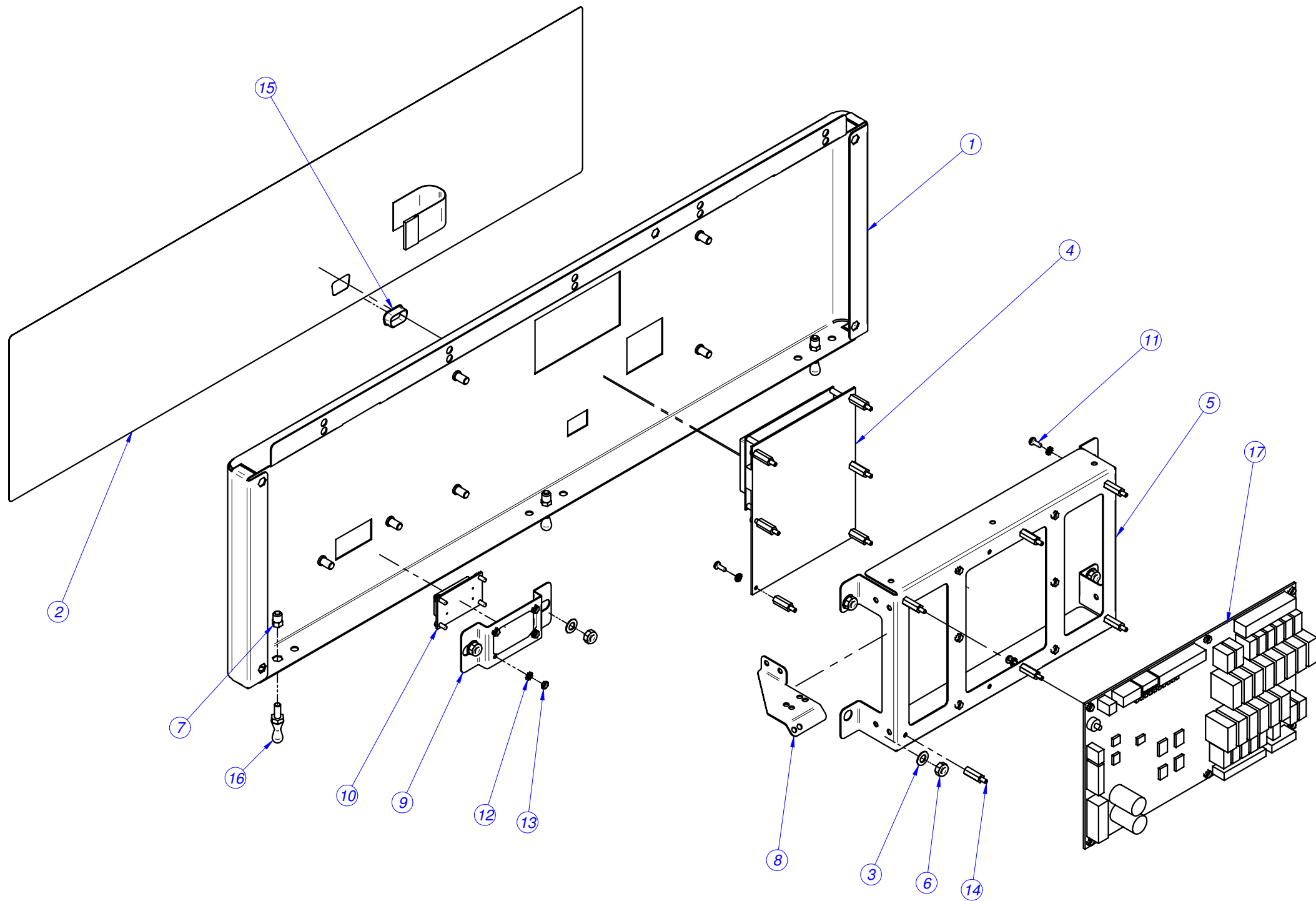
MOD.	WASHER EXTRACTOR WED-10 MPP		AREA	FITTING	
Nº	REFERENCE	DENOMINATION	QUANT.		
1	P610339000	SIDE PANEL 10	2		
2	P617504000	LEFT COLUMN DANUBE 10	1		
3	P610306000	REAR PANEL DRAIN PIPE 10	1		
4	P610340000	LONGITUDINAL CROSSBAR 10	1		
5	P610335000	PARALLEL CROSSBAR 10	1		
6	P610326000	REAR PANEL 10	1		
7	P617005000	SKIRTING 10	1		
8	P630315000	SAFETY MICRO BRACKET 10	1		
9	P627063000	MAGNET SUPPORT V2	1		
10	P617531000	CONTROL HOLDER COMP.MPP 10	1		
11	P647509000	ADHESIVE HOLDER DANUBE 10	1		
12	Q302022000	WASHER 16X6X1.2 A.304	26		
13	Q042022000	COUNTERSUNK SCREW M4X15	2		
14	P440704000	TRAY LID 1002436	1		
15	P440705000	TUB TRAY SUPPORT, COMPLETE	1		
16	Q232030000	WASHER A5	5		
17	Q162030000	HEX NUT M5	3		
18	Q411302000	MONOBOLT RIVET D6.35	2		
19	P610325000	REAR PANEL	1		
20	Q012031000	HEX BOLT M5X10 A.304	25		
21	Q242030000	WASHER A5 A.304	26		
22	Q221342000	HEXAGONAL RIVET M5	36		
23	X012612000	LOCK SPIKE	7		
24	X010503000	SPRING LOCK	7		
25	Z203010000	MAGNETIC SWITCH FASTENER	1		
26	Q032031000	SCREW M5X10	1		
27	Q222030000	SELF-LOCK.NUT.M5	3		
28	P533081000	MAGNETIC SENSOR A061 NC	1		
29	P617505000	RIGHT COLUMN DANUBE 25	1		
30	P620337000	IMBALANCE MAGNET DIAM. 50	1		
31	Q042032000	COUNTERSUNK SCREW M5X15 A304	1		
32	P617006000	FRONT CROSSBAR	1		
33	Q151335000	BOLT W/WASHER.A.5.6X13	12		
34	P610341000	COMPLETE WORKTOP	1		
35	P620316000	TOP CORNER PROTECTOR	2		

MOD.	WASHER EXTRACTOR WED-13MPP		AREA	FITTING	
Nº	REFERENCE	DENOMINATION	QUANT.		
1	P620360000	SIDE PANEL 13	2		
2	P627502000	LEFT COLUMN DANUBE 13	1		
3	P620306000	REAR PANEL DRAIN PIPE 13	1		
4	P620353000	LONGITUDINAL CROSSBAR 13	1		
5	P620354000	PARALLEL CROSSBAR 13	1		
6	P620334000	REAR PANEL 13	1		
7	P627005000	SKIRTING 13	1		
8	P630315000	SAFETY MICRO BRACKET 13	1		
9	P627063000	MAGNET SUPPORT V2	1		
10	P627534000	CONTROL HOLDER COMP.MPP 13	1		
11	P647509000	ADHESIVE HOLDER DANUBE 13	1		
12	Q302022000	WASHER 16X6X1.2 A.304	26		
13	Q042022000	COUNTERSUNK SCREW M4X15	2		
14	P440704000	TRAY LID 1002436	1		
15	P440705000	TUB TRAY SUPPORT, COMPLETE	1		
16	Q232030000	WASHER A5	5		
17	Q162030000	HEX NUT M5	3		
18	Q411302000	MONOBOLT RIVET D6.35	2		
19	P620331000	REAR PANEL	1		
20	Q012031000	HEX BOLT M5X10 A.304	25		
21	Q242030000	WASHER A5 A.304	26		
22	Q221342000	HEXAGONAL RIVET M5	36		
23	X012612000	LOCK SPIKE	7		
24	X010503000	SPRING LOCK	7		
25	Z203010000	MAGNETIC SWITCH FASTENER	1		
26	Q032031000	SCREW M5X10	1		
27	Q222030000	SELF-LOCK.NUT.M5	3		
28	P533081000	MAGNETIC SENSOR A061 NC	1		
29	P627503000	RIGHT COLUMN DANUBE 25	1		
30	P620337000	IMBALANCE MAGNET DIAM. 50	1		
31	Q042032000	COUNTERSUNK SCREW M5X15 A304	1		
32	P627006000	FRONT CROSSBAR	1		
33	Q151335000	BOLT W/WASHER.A.5.6X13	12		
34	P620345000	COMPLETE WORKTOP	1		
35	P620316000	TOP CORNER PROTECTOR	2		

MOD.	WASHER EXTRACTOR WED-18 MPP		AREA	FITTING	
Nº	REFERENCE	DENOMINATION	QUANT.		
1	P630342000	SIDE PANEL 18	2		
2	P637502000	LEFT COLUMN DANUBE 18	1		
3	P630307000	REAR PANEL DRAIN PIPE 18	1		
4	P630329000	LONGITUDINAL CROSSBAR 18	1		
5	P630330000	PARALLEL CROSSBAR 18	1		
6	P630318000	REAR PANEL 18	1		
7	P637005000	SKIRTING 18	1		
8	P630315000	SAFETY MICRO BRACKET 18	1		
9	P627063000	MAGNET SUPPORT V2	1		
10	P637516000	CONTROL HOLDER COMP.MPP 18	1		
11	P647509000	ADHESIVE HOLDER DANUBE 18	1		
12	Q302022000	WASHER 16X6X1.2 A.304	26		
13	Q042022000	COUNTERSUNK SCREW M4X15	2		
14	P440704000	TRAY LID 1002436	1		
15	P440705000	TUB TRAY SUPPORT, COMPLETE	1		
16	Q232030000	WASHER A5	5		
17	Q162030000	HEX NUT M5	3		
18	Q411302000	MONOBOLT RIVET D6.35	2		
19	P630317000	REAR PANEL	1		
20	Q012031000	HEX BOLT M5X10 A.304	25		
21	Q242030000	WASHER A5 A.304	26		
22	Q221342000	HEXAGONAL RIVET M5	36		
23	X012612000	LOCK SPIKE	7		
24	X010503000	SPRING LOCK	7		
25	Z203010000	MAGNETIC SWITCH FASTENER	1		
26	Q032031000	SCREW M5X10	1		
27	Q222030000	SELF-LOCK.NUT.M5	3		
28	P533081000	MAGNETIC SENSOR A061 NC	1		
29	P637503000	RIGHT COLUMN DANUBE 25	1		
30	P620337000	IMBALANCE MAGNET DIAM. 50	1		
31	Q042032000	COUNTERSUNK SCREW M5X15 A304	1		
32	P637006000	FRONT CROSSBAR	1		
33	Q151335000	BOLT W/WASHER.A.5.6X13	12		
34	P630323000	COMPLETE WORKTOP	1		
35	P620316000	TOP CORNER PROTECTOR	2		

MOD.		WASHER EXTRACTOR WED-13 <u>before March 2008 before 33038</u>		AREA	FITTING	
Nº	REFERENCE	DENOMINATION	QUANT.			
1	P620360000	SIDE PANEL 13	2			
2	P627502000	LEFT COLUMN DANUBE 13	1			
3	P620306000	REAR PANEL DRAIN PIPE 13	1			
4	P620353000	LONGITUDINAL CROSSBAR 13	1			
5	P620354000	PARALLEL CROSSBAR 13	1			
6	P620334000	REAR PANEL 13	1			
7	P627005000	SKIRTING 13	1			
8	P630315000	SAFETY MICRO BRACKET 13	1			
9	P627063000	MAGNET SUPPORT V2	1			
10	P627505000	CONTROL HOLDER COMP.MPP 13	1			
11	P627501000	ADHESIVE HOLDER DANUBE 13	1			
12	Q302022000	WASHER 16X6X1.2 A.304	26			
13	Q042022000	COUNTERSUNK SCREW M4X15	2			
14	P440704000	TRAY LID 1002436	1			
15	P440705000	TUB TRAY SUPPORT, COMPLETE	1			
16	Q232030000	WASHER A5	5			
17	Q162030000	HEX NUT M5	3			
18	Q411302000	MONOBOLT RIVET D6.35	2			
19	P620331000	REAR PANEL	1			
20	Q012031000	HEX BOLT M5X10 A.304	25			
21	Q242030000	WASHER A5 A.304	26			
22	Q221342000	HEXAGONAL RIVET M5	36			
23	X012612000	LOCK SPIKE	7			
24	X010503000	SPRING LOCK	7			
25	Z203010000	MAGNETIC SWITCH FASTENER	1			
26	Q032031000	SCREW M5X10	1			
27	Q222030000	SELF-LOCK.NUT.M5	3			
28	P533081000	MAGNETIC SENSOR A061 NC	1			
29	P627503000	RIGHT COLUMN DANUBE 25	1			
30	P620337000	IMBALANCE MAGNET DIAM. 50	1			
31	Q042032000	COUNTERSUNK SCREW M5X15 A304	1			
32	P627006000	FRONT CROSSBAR	1			
33	Q151335000	BOLT W/WASHER.A.5.6X13	12			
34	P620345000	COMPLETE WORKTOP	1			
35	P620316000	TOP CORNER PROTECTOR	2			

MOD.	WASHER EXTRACTOR WED-18 <u>before March 2008 before 33038</u>		AREA	FITTING	
Nº	REFERENCE	DENOMINATION	QUANT.		
1	P630342000	SIDE PANEL 18	2		
2	P637502000	LEFT COLUMN DANUBE 18	1		
3	P630307000	REAR PANEL DRAIN PIPE 18	1		
4	P630329000	LONGITUDINAL CROSSBAR 18	1		
5	P630330000	PARALLEL CROSSBAR 18	1		
6	P630318000	REAR PANEL 18	1		
7	P637005000	SKIRTING 18	1		
8	P630315000	SAFETY MICRO BRACKET 18	1		
9	P627063000	MAGNET SUPPORT V2	1		
10	P637505000	CONTROL HOLDER COMP.MPP 18	1		
11	P637501000	ADHESIVE HOLDER DANUBE 18	1		
12	Q302022000	WASHER 16X6X1.2 A.304	26		
13	Q042022000	COUNTERSUNK SCREW M4X15	2		
14	P440704000	TRAY LID 1002436	1		
15	P440705000	TUB TRAY SUPPORT, COMPLETE	1		
16	Q232030000	WASHER A5	5		
17	Q162030000	HEX NUT M5	3		
18	Q411302000	MONOBOLT RIVET D6.35	2		
19	P630317000	REAR PANEL	1		
20	Q012031000	HEX BOLT M5X10 A.304	25		
21	Q242030000	WASHER A5 A.304	26		
22	Q221342000	HEXAGONAL RIVET M5	36		
23	X012612000	LOCK SPIKE	7		
24	X010503000	SPRING LOCK	7		
25	Z203010000	MAGNETIC SWITCH FASTENER	1		
26	Q032031000	SCREW M5X10	1		
27	Q222030000	SELF-LOCK.NUT.M5	3		
28	P533081000	MAGNETIC SENSOR A061 NC	1		
29	P637503000	RIGHT COLUMN DANUBE 25	1		
30	P620337000	IMBALANCE MAGNET DIAM. 50	1		
31	Q042032000	COUNTERSUNK SCREW M5X15 A304	1		
32	P637006000	FRONT CROSSBAR	1		
33	Q151335000	BOLT W/WASHER.A.5.6X13	12		
34	P630323000	COMPLETE WORKTOP	1		
35	P620316000	TOP CORNER PROTECTOR	2		



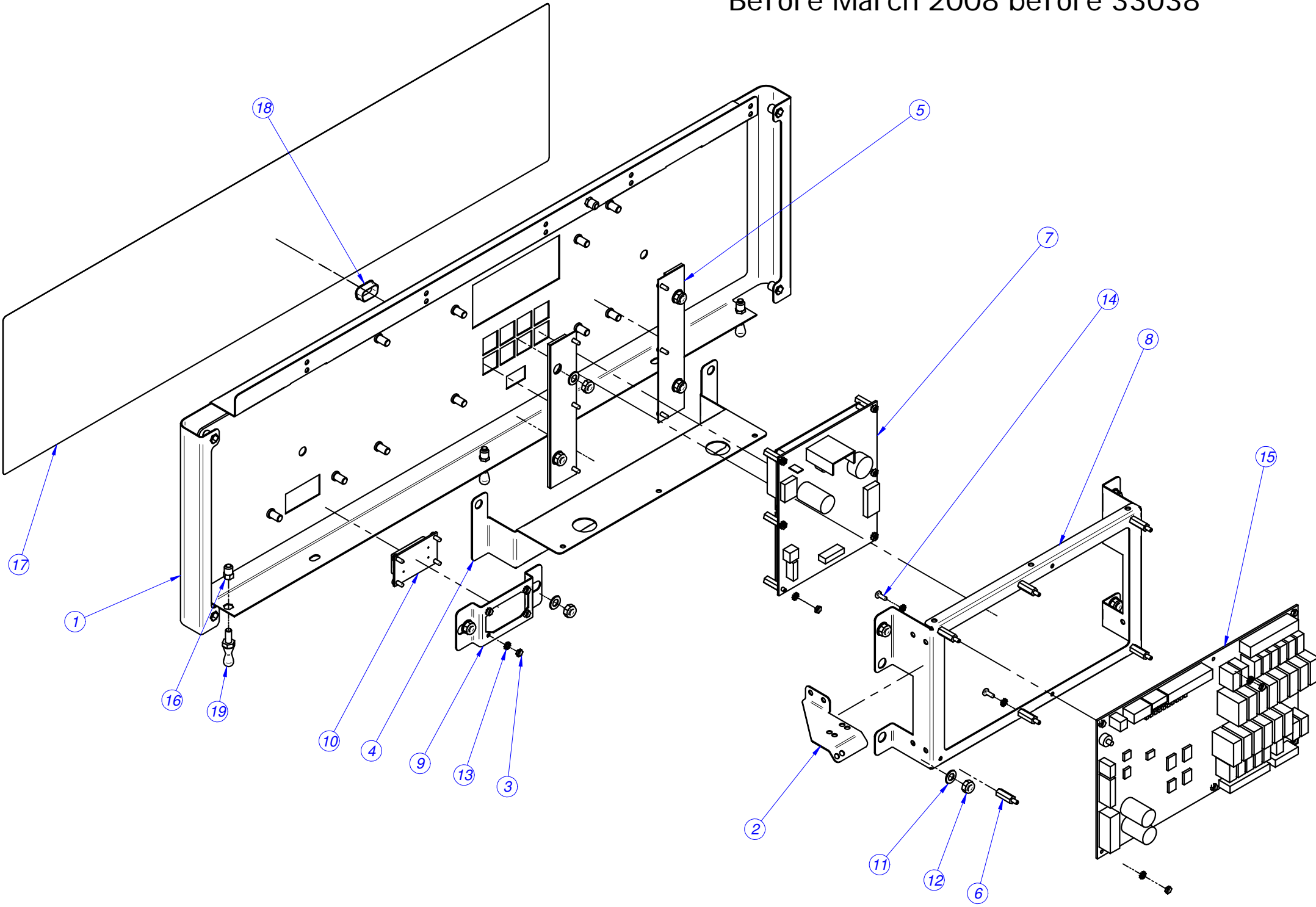


MOD.	WASHER EXTRACTOR WED-8-10 MPP		AREA	CONTROL HOLDER	
Nº	REFERENCE	DENOMINATION	QUANT.		
1	P617531000	CONTROL HOLDER WED 8-10 MPP PANEL	1		
2	P647509000	MPP BUTTON LABEL	1		
3	Q232040000	WASHER A6	6		
4	P643007000	MPP GRAPHIC DISPLAY CARD	1		
5	P643009000	MPP DISPLAY SUPPORT	1		
6	Q222012000	SELF-LOCK.NUT.M6	6		
7	Q221342000	HEXAGONAL RIVET M5	3		
8	P620359000	PRESSOSTAT HOSE SUPPORT	1		
9	P620338000	C.I. SWITCH HOLDER	1		
10	P623017000	C.I. POWER SWITCH	1		
11	T133008000	ANCHORING SCREW M3	16		
12	Q242010000	WASHER A.3 A304	28		
13	Q162010000	HEX.SCREW.M3	16		
14	T133007000	SPACER M3	12		
15	P613014000	PROG. SERIES PORT PLUG.	1		
16	P450303000	LOCK SPIKE	3		
17	P613005000	INLET-OUTLET RELAY CARD	1		

MOD.	WASHER EXTRACTOR WED-13		AREA	CONTROL HOLDER	
Nº	REFERENCE	DENOMINATION	QUANT.		
1	P627534000	CONTROL HOLDER WED 13 MPP PANEL	1		
2	P647509000	MPP BUTTON LABEL	1		
3	Q232040000	WASHER A6	6		
4	P643007000	MPP GRAPHIC DISPLAY CARD	1		
5	P643009000	MPP DISPLAY SUPPORT	1		
6	Q222012000	SELF-LOCK.NUT.M6	6		
7	Q221342000	HEXAGONAL RIVET M5	3		
8	P620359000	PRESSOSTAT HOSE SUPPORT	1		
9	P620338000	C.I. SWITCH HOLDER	1		
10	P623017000	C.I. POWER SWITCH	1		
11	T133008000	ANCHORING SCREW M3	16		
12	Q242010000	WASHER A.3 A304	28		
13	Q162010000	HEX.SCREW.M3	16		
14	T133007000	SPACER M3	12		
15	P613014000	PROG. SERIES PORT PLUG.	1		
16	P450303000	LOCK SPIKE	3		
17	P613005000	INLET-OUTLET RELAY CARD	1		

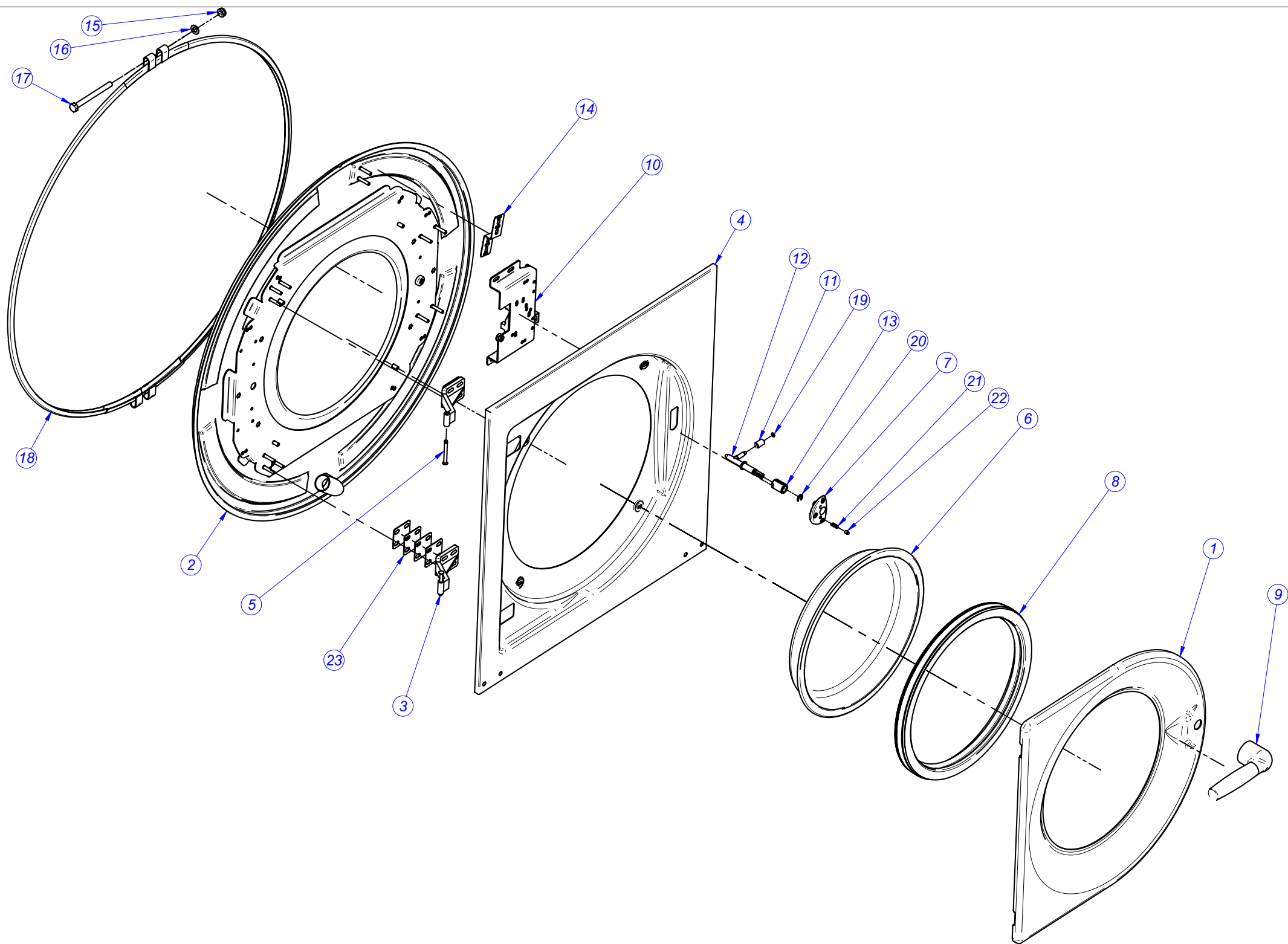
MOD.	WASHER EXTRACTOR WED-18			AREA	CONTROL HOLDER	
Nº	REFERENCE	DENOMINATION	QUANT.			
1	P637516000	CONTROL HOLDER WED 18 MPP PANEL	1			
2	P647509000	MPP BUTTON LABEL	1			
3	Q232040000	WASHER A6	6			
4	P643007000	MPP GRAPHIC DISPLAY CARD	1			
5	P643009000	MPP DISPLAY SUPPORT	1			
6	Q222012000	SELF-LOCK.NUT.M6	6			
7	Q221342000	HEXAGONAL RIVET M5	3			
8	P620359000	PRESSOSTAT HOSE SUPPORT	1			
9	P620338000	C.I. SWITCH HOLDER	1			
10	P623017000	C.I. POWER SWITCH	1			
11	T133008000	ANCHORING SCREW M3	16			
12	Q242010000	WASHER A.3 A304	28			
13	Q162010000	HEX.SCREW.M3	16			
14	T133007000	SPACER M3	12			
15	P613014000	PROG. SERIES PORT PLUG.	1			
16	P450303000	LOCK SPIKE	3			
17	P613005000	INLET-OUTLET RELAY CARD	1			

Before March 2008 before 33038



MOD.	WASHER EXTRACTOR WED-13 <u>before March 2008 before 33038</u>		AREA	CONTROL HOLDER	
Nº	REFERENCE	DENOMINATION	QUANT.		
1	P627505000	COMP. CONTROL HOLDER MPP 13	1		
2	P620359000	PRESSOSTAT HOSE SUPPORT	1		
3	Q162010000	HEX.SCREW.M3	16		
4	P530404000	PROGRAMMER COVER	1		
5	P620344000	COMPL. PROGRAMMER SUPPORT	2		
6	T133007000	SPACER M3	12		
7	P613006000	DISPLAY CIRCUIT MPP	1		
8	P620328000	PLATE BRACKET	1		
9	P620338000	C.I. SWITCH HOLDER	1		
10	P623017000	C.I. POWER SWITCH	1		
11	Q232040000	WASHER A6	10		
12	Q222012000	SELF-LOCK.NUT.M6	10		
13	Q242010000	WASHER A.3 A304	22		
14	T133008000	ANCHORING SCREW M3	16		
15	P613005000	INPUT-OUTPUT RELAY CARD MPP	1		
16	Q221342000	HEXAGONAL RIVET M5	8		
17	P627501000	WED-13 MPP CONTROL HOLDER ADHESIVE	1		
18	P613014000	PROG. SERIES PORT PLUG.	1		
19	P450303000	LOCK SPIKE	3		

MOD.		WASHER EXTRACTOR WED-18 <u>before March 2008 before 33038</u>	AREA	CONTROL HOLDER	
N°	REFERENCE	DENOMINATION	QUANT.		
1		COMP. CONTROL HOLDER MPP 18	1		
2	P620359000	PRESSOSTAT HOSE SUPPORT	1		
3	Q162010000	HEX.SCREW.M3	16		
4	P530404000	PROGRAMMER COVER	1		
5	P620344000	COMPL. PROGRAMMER SUPPORT	2		
6	T133007000	SPACER M3	12		
7	P613006000	DISPLAY CIRCUIT MPF	1		
8	P620328000	PLATE BRACKET	1		
9	P620338000	C.I. SWITCH HOLDER	1		
10	P623017000	C.I. POWER SWITCH	1		
11	Q232040000	WASHER A6	10		
12	Q222012000	SELF-LOCK.NUT.M6	10		
13	Q242010000	WASHER A.3 A304	22		
14	T133008000	ANCHORING SCREW M3	16		
15	P613005000	INPUT-OUTPUT RELAY CARD MPP	1		
16	Q221342000	HEXAGONAL RIVET M5	8		
17	P637501000	WED-18 MPP CONTROL HOLDER ADHESIVE	1		
18	P613014000	PROG. SERIES PORT PLUG.	1		
19	P450303000	LOCK SPIKE	3		

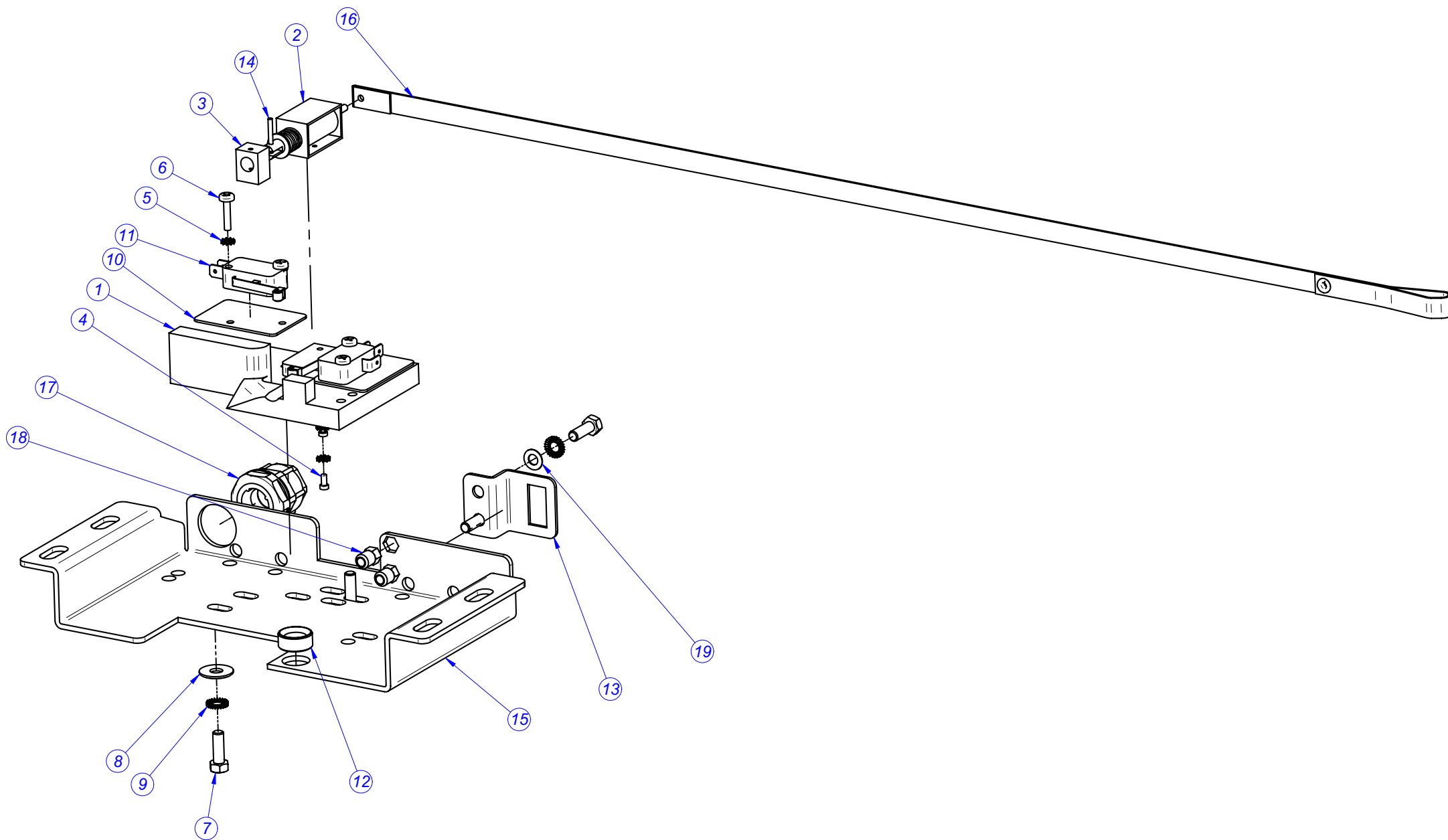


MOD.	WASHER EXTRACTOR WED-8-10 MPP		AREA	FRONT TUB	
Nº	REFERENCE	DENOMINATION	QUANT.		
1	P617514000	COMPLETE DOOR FRAME WED-8-10	1		
2	P617511000	COMPLETE FRONT TUBE WED-8-10	1		
3	P627512000	DANUBE HINGE	2		
4	P610331000	SPACER FOR DOOR FRONT METAL PANEL	2		
5	P620514000	DOOR PIN	2		
6	P440503000	DOOR GLASS	1		
7	P617508000	SUPPORT OF THE GUIDE BUSHING	1		
8	P440502000	DOOR GASKET	1		
9	P510502000	DOOR HANDLE SUPPORT	1		
10	P520512000	DOOR HANDLE	1		
11	P617528000	COMPLETE LOCK FOR WED-8-10	1		
12	P627048000	BLACK PLASTIC CYLINDER	1		
13	P627059000	DOOR LITTLE SHAFT STOP	1		
14	P617032000	DOOR MAIN SHAFT	1		
15	P510503000	GUIDE BUSHING	1		
16	P617518000	DOOR FRONT METAL PANEL	1		
17	Q372002000	PIN FOR DOOR SHAFTS	1		



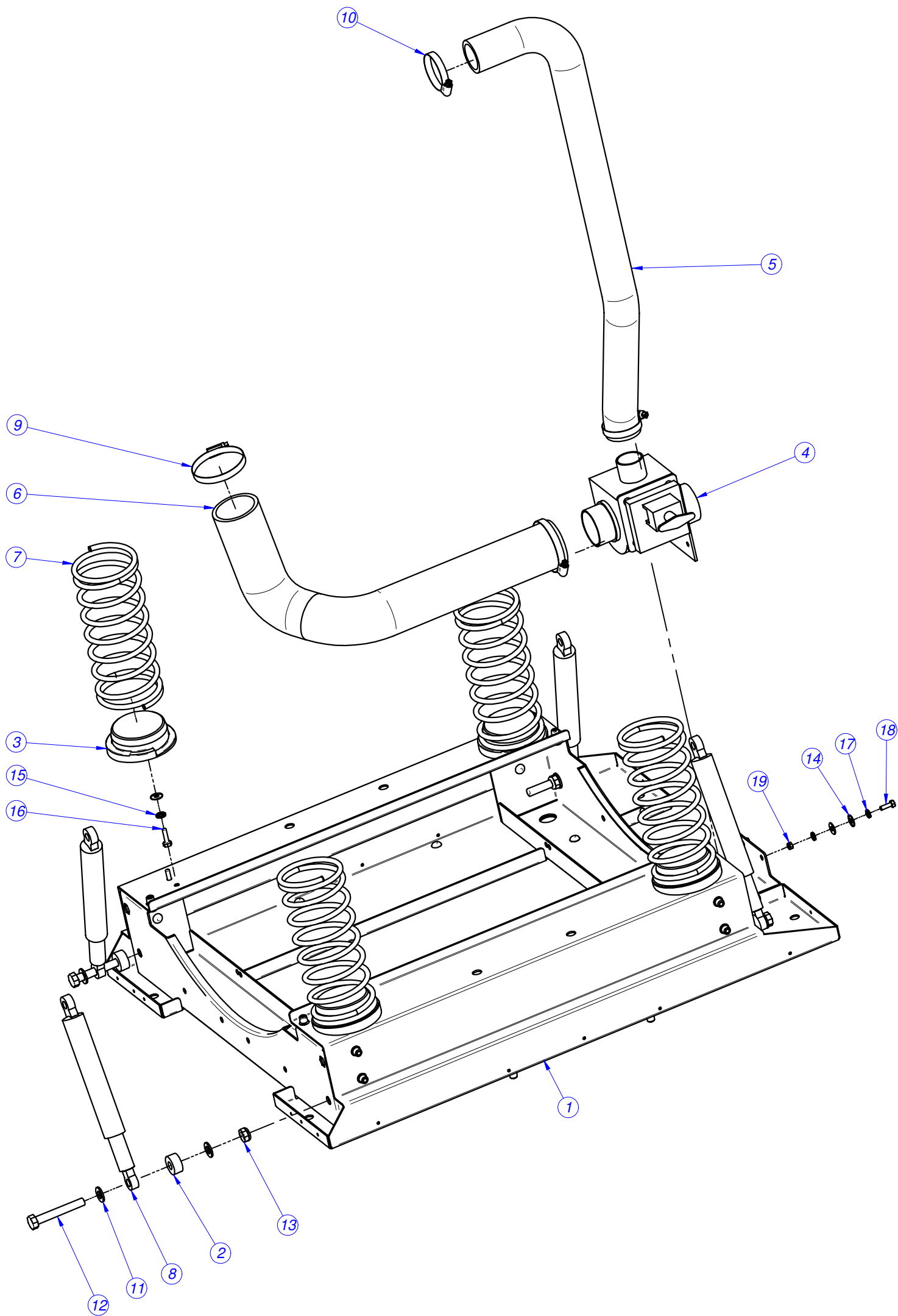
MOD.	WASHER EXTRACTOR WED-13 MPP		AREA	FRONT TUBE	
Nº	REFERENCE	DENOMINATION	QUANT.		
1	P627530000	COMP. DOOR DANUBE 13,18,25	1		
2	P627532000	TUB FRONT DNB 13 COMPL	1		
3	P627512000	HINGE DANUBE	2		
4	P647501000	DOOR FRONT PANEL DNB 13,18,25	1		
5	P620514000	DOOR PIN	2		
6	P530503000	DOOR GLASS	1		
7	P627041000	SUPPORT OF THE GUIDE BUSHING	1		
8	P620528000	DOOR GASKET 13,18,25	1		
9	P530538000	DOOR HANDLE	1		
10	P627527000	LOCK DANUBE INT 13,18	1		
11	P627048000	BLACK PLASTIC CYLINDER	1		
12	P627039000	LOCKING LEVER	1		
13	P510503000	GUIDE BUSHING	1		
14	P626128000	PRESSOSTAT PIPE SUPPORT	1		
15	Q221306000	HEX.SCREW.AUT.M10 8.8 ZINC	1		
16	Q232060000	WASHER A10	1		
17	Q151356000	HEX BOLT M10X110	1		
18	P626118000	TUB LOCK 13	1		
19	Q272020000	SAFETY WASHER 4	1		
20	Q271006000	SAFETY WASHER 8	1		
21	Z200606000	RES.DOOR LOCK	1		
22	P507038000	HOSE END	1		
23	P627514000	HINGE SPACERS DNB	8		

MOD.	WASHER EXTRACTOR WED-18 MPP		AREA	FRONT TUBE	
Nº	REFERENCE	DENOMINATION	QUANT.		
1	P627530000	COMP. DOOR DANUBE 13,18,25	1		
2	P637514000	TUB FRONT DNB 18 COMPL	1		
3	P627512000	HINGE DANUBE	2		
4	P647501000	DOOR FRONT PANEL DNB 13,18,25	1		
5	P620514000	DOOR PIN	2		
6	P530503000	DOOR GLASS	1		
7	P627041000	SUPPORT OF THE GUIDE BUSHING	1		
8	P620528000	DOOR GASKET 13,18,25	1		
9	P530538000	DOOR HANDLE	1		
10	P627527000	LOCK DANUBE INT 13,18	1		
11	P627048000	BLACK PLASTIC CYLINDER	1		
12	P627039000	LOCKING LEVER	1		
13	P510503000	GUIDE BUSHING	1		
14	P626128000	PRESSOSTAT PIPE SUPPORT	1		
15	Q221306000	HEX.SCREW.AUT.M10 8.8 ZINC	1		
16	Q232060000	WASHER A10	1		
17	Q151356000	HEX BOLT M10X110	1		
18	P636112000	TUB LOCK 18	1		
19	Q272020000	SAFETY WASHER 4	1		
20	Q271006000	SAFETY WASHER 8	1		
21	Z200606000	RES.DOOR LOCK	1		
22	P507038000	HOSE END	1		
23	P627514000	HINGE SPACERS DNB	8		



MOD.	WASHER EXTRACTOR WED-8-10 MPP		AREA	LOCK	
Nº	REFERENCE	DENOMINATION	QUANT.		
	P617528000	COMPLETE LOCK WED 8-10	1		
1	P627516000	LOCK BASE	1		
2	P613002000	DOOR ELECTROMAGNET	1		
3	P627047000	LOCK BLOCKED PLASTIC STOP	1		
4	Q151396000	ALLEN SCREW M2.5x5	2		
5	Q242010000	WASHER A5 A.304	4		
6	Q032012000	SCREW M3X15	4		
7	Q012032000	SCREW. M5X15 A.304	4		
8	Q302022000	WASHER 16X6X1.2 A.304	2		
9	Q242030000	WASHER. A5 A.304	4		
10	R010535000	SPACER PLATE	2		
11	R010534000	DOOR CLOSED SWITCH	2		
12	P617016000	WEDGE LOCK BUSHING	1		
13	P627535000	PLATE FOR DOOR PULL	1		
14	P627053000	PIN FOR LOCK BLOCKED	1		
15	P617527000	COMPLETE LOCK WEDGE	1		
16	P627536000	DOOR PULL WED 18/25	1		
17	R073004000	STUFFING BOX	1		
18	Q221342000	EXAGONAL RIVET M5	2		
19	Q232030000	WASHER A5	2		
20	P623010000	DOOR WIRING	1		

MOD.	WASHER EXTRACTOR WED 13,18,2007/25 MPP		AREA	LOCK	
Nº	REFERENCE	DENOMINATION	QUANT.		
	P627527000	COMPLETE LOCK WED 13-18-2007/25 MPP	1		
1	P627516000	LOCK BASE	1		
2	P613002000	DOOR ELECTROMAGNET	1		
3	P627047000	LOCK BLOCKED PLASTIC STOP	1		
4	Q151396000	ALLEN SCREW M2.5x5	2		
5	Q242010000	WASHER A5 A.304	4		
6	Q032012000	SCREW M3X15	4		
7	Q012032000	SCREW. M5X15 A.304	4		
8	Q302022000	WASHER 16X6X1.2 A.304	2		
9	Q242030000	WASHER. A5 A.304	4		
10	R010535000	SPACER PLATE	2		
11	R010534000	DOOR CLOSED SWITCH	2		
12	P537081000	WEDGE LOCK BUSHING	1		
13	P627535000	PLATE FOR DOOR PULL	1		
14	P627053000	PIN FOR LOCK BLOCKED	1		
15	P627526000	COMPLETE LOCK WEDGE	1		
16	P627536000	DOOR PULL WED 18/25	1		
17	R073004000	STUFFING BOX	1		
18	Q221342000	EXAGONAL RIVET M5	2		
19	Q232030000	WASHER A5	2		
20	P623010000	DOOR WIRING	1		

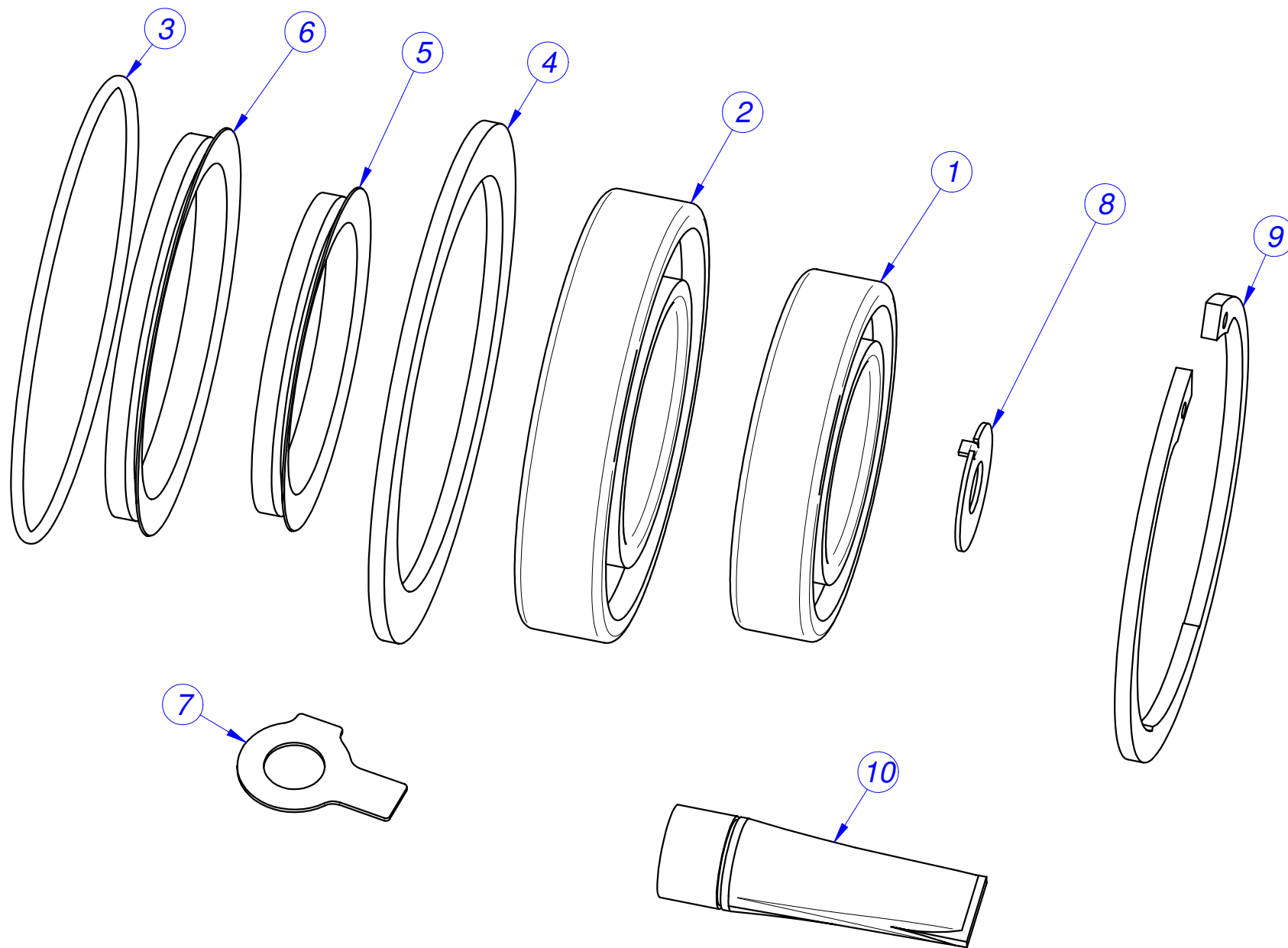


MOD.	WASHER EXTRACTOR WED-10 MPP		AREA	FRAME	
Nº	REFERENCE	DENOMINATION	QUANT.		
1	P610114000	COMPLETE FRAME 10	1		
2	P620107000	SHOCK ABSORBER BUSHING	4		
3	P620106000	SPRING BASE	4		
4	P302120000	DRAINAGE VALVE	1		
5	P610702000	OVERFLOW PIPE 8-10	1		
6	P610703000	DRAIN PIPE 8-10	1		
7	P610105000	SPRING 8-10	4		
8	P620115000	SHOCK ABSORB. 120NW	4		
9	Q881324000	CLAMP 50-70L	2		
10	Q881306000	CLAMP 32-50L	2		
11	Q232060000	WASHER A10	8		
12	Q011369000	HEX.SCREW.M10X70 H.ZINC	4		
13	Q221306000	HEX.SCREW.AUT.M10 8.8 ZINC	4		
14	Q302022000	WASHER 16X6X1.2 A.304	12		
15	Q242040000	WASHER A6 A.304	8		
16	Q012043000	HEX BOLT M6X20 A.304	8		
17	Q242030000	WASHER A5 A.304	4		
18	Q012032000	HEX BOLT M5X15 A.304	2		
19	Q221308000	HEX.SCREW.AUT.M5 H.ZINC	2		

MOD.	WASHER EXTRACTOR WED-13		AREA	FRAME	
Nº	REFERENCE	DENOMINATION	QUANT.		
1	P620104000	COMPLETE FRAME 13	1		
2	P620107000	SHOCK ABSORBER BUSHING	4		
3	P620106000	SPRING BASE	4		
4	P302120000	DRAINAGE VALVE	1		
5	P620704000	OVERFLOW PIPE 13	1		
6	P620703000	DRAIN PIPE 13	1		
7	P620105000	SPRING 13	4		
8	P620115000	SHOCK ABSORB. 120NW	4		
9	Q881324000	CLAMP 50-70L	2		
10	Q881306000	CLAMP 32-50L	2		
11	Q232060000	WASHER A10	2		
12	Q011369000	HEX.SCREW.M10X70 H.ZINC	1		
13	Q221306000	HEX.SCREW.AUT.M10 8.8 ZINC	1		
14	Q302022000	WASHER 16X6X1.2 A.304	12		
15	Q242040000	WASHER A6 A.304	8		
16	Q012043000	HEX BOLT M6X20 A.304	8		
17	Q242030000	WASHER A5 A.304	4		
18	Q012032000	HEX BOLT M5X15 A.304	2		
19	Q221308000	HEX.SCREW.AUT.M5 H.ZINC	2		



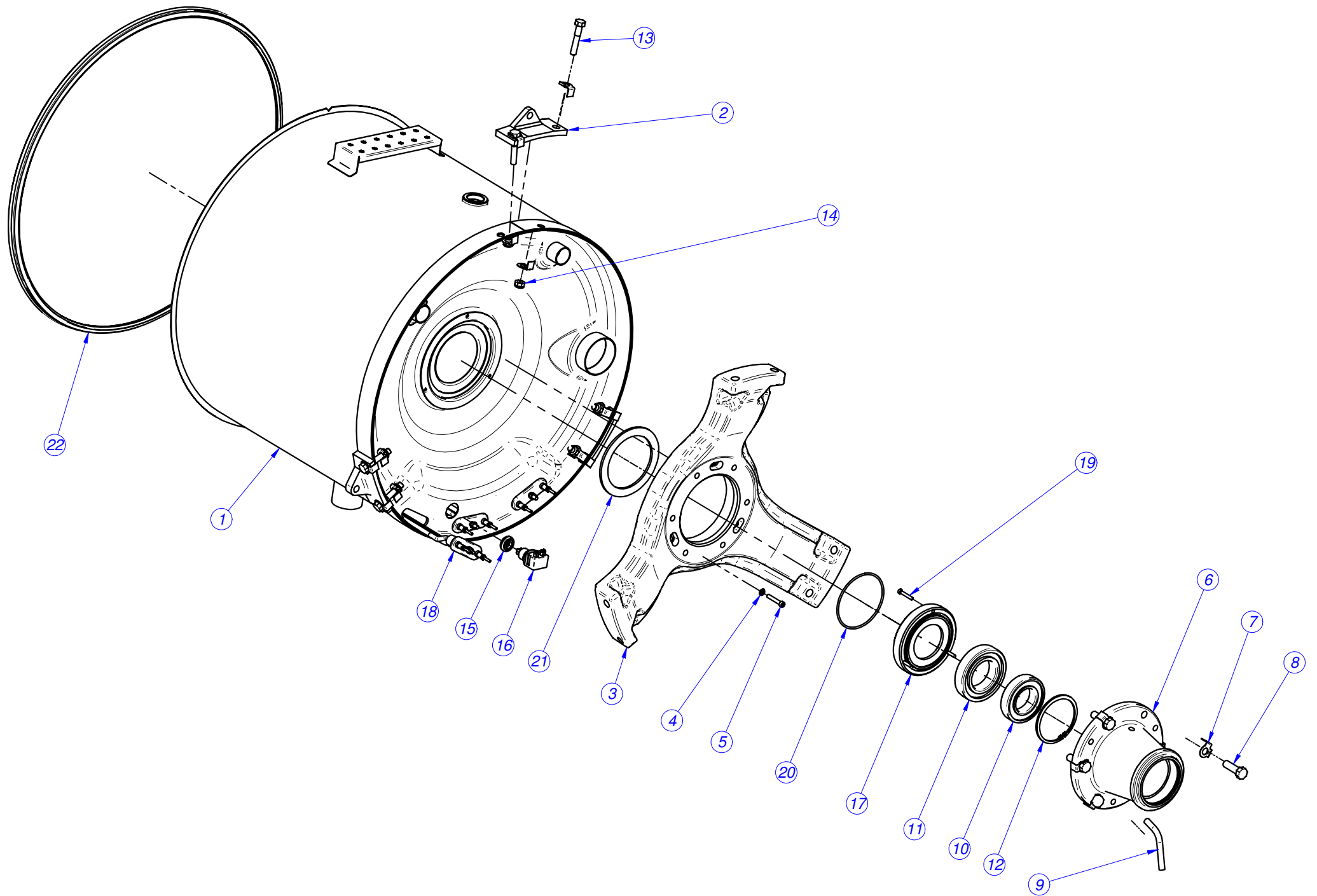
MOD.	WASHER EXTRACTOR WED-18		AREA	FRAME	
Nº	REFERENCE	DENOMINATION	QUANT.		
1	P630104000	COMPLETE FRAME 18	1		
2	P620107000	SHOCK ABSORBER BUSHING	4		
3	P620106000	SPRING BASE	4		
4	P302120000	DRAINAGE VALVE	1		
5	P610702000	OVERFLOW PIPE	1		
6	P610703000	DRAIN PIPE	1		
7	P630106000	SPRING 18	4		
8	P620115000	SHOCK ABSORB. 120N	8		
9	Q881324000	CLAMP 50-70L	2		
10	Q881306000	CLAMP 32-50L	2		
11	Q232060000	WASHER A10	2		
12	Q011369000	HEX.SCREW.M10X70 H.ZINC	1		
13	Q221306000	HEX.SCREW.AUT.M10 8.8 ZINC	1		
14	Q302022000	WASHER 16X6X1.2 A.304	12		
15	Q242040000	WASHER A6 A.304	8		
16	Q012043000	HEX BOLT M6X20 A.304	8		
17	Q242030000	WASHER A5 A.304	4		
18	Q012032000	HEX BOLT M5X15 A.304	2		
19	Q221308000	HEX.SCREW.AUT.M5 H.ZINC	2		



MOD.	WASHER EXTRACTOR WED-8-10 MPP		AREA	BEARING KIT	
No	CODE	DENOMINATION	Quant.		
	1300000083	BEARING-SEALS KIT FOR WASHER 8-10 KG.			
		Included:			
1	P616009	BEARING 55/100/21	1		
2	P616008	BEARING 45/85/19	1		
3	Q307073	O RING GASKET 102x3	1		
4	P616007	COUNTERRETAIN SEAL 10	1		
5	P614911	V-RING RETAINER 63	1		
6	P634911	V-RING RETAINER 78	1		
7	Q271302	SECURITY WASHER 13	8		
8	Q301329	SECURITY WASHER 13	1		
9	Q301044	SAFET. RING SEEGER INT.85	1		
10	P536544	GREASE AMBLYGON TA 15/2	1		

MOD.	WASHER EXTRACTOR WED-13 MPP		AREA	BEARING KIT	
No	CODE	DENOMINATION	Quant.		
	1300000084	BEARING-SEALS KIT FOR WASHER 13 KG.			
		Included:			
1	P626008	BEARING 50/90/20	1		
2	P626009	BEARING 60/110/22	1		
3	Q307075	O RING GASKET 114x3	1		
4	P626007	COUNTERRETAIN SEAL 13	1		
5	P624913	V-RING RETAINER 70	1		
6	P624914	V-RING RETAINER 85	1		
7	Q271302	SECURITY WASHER 13	8		
7	Q271303	SECURITY WASHER 15	8		
8	Q301329	SECURITY WASHER 13	1		
9	Q301030	SAFET. RING SEEGER INT.90	1		
10	P536544	GREASE AMBLYGON TA 15/2	1		

MOD.	WASHER EXTRACTOR WED-18 MPP		AREA	BEARING KIT	
No	CODE	DENOMINATION	Quant.		
	1300000085	BEARING-SEALS KIT FOR WASHER 18 KG.			
		Included:			
1	P626009	BEARING 60/110/22	1		
2	P636008	BEARING 70/125/24	1		
3	Q307077	O RING GASKET 128x3	1		
4	P636005	COUNTERRETAIN SEAL 18	1		
5	P634911	V-RING RETAINER 78	1		
6	P624912	V-RING RETAINER 92	1		
7	Q271303	SECURITY WASHER 15	8		
8	Q301329	SECURITY WASHER 13	1		
9	Q301036	SAFET. RING SEEGER J110x4	1		
10	P536544	GREASE AMBLYGON TA 15/2	1		

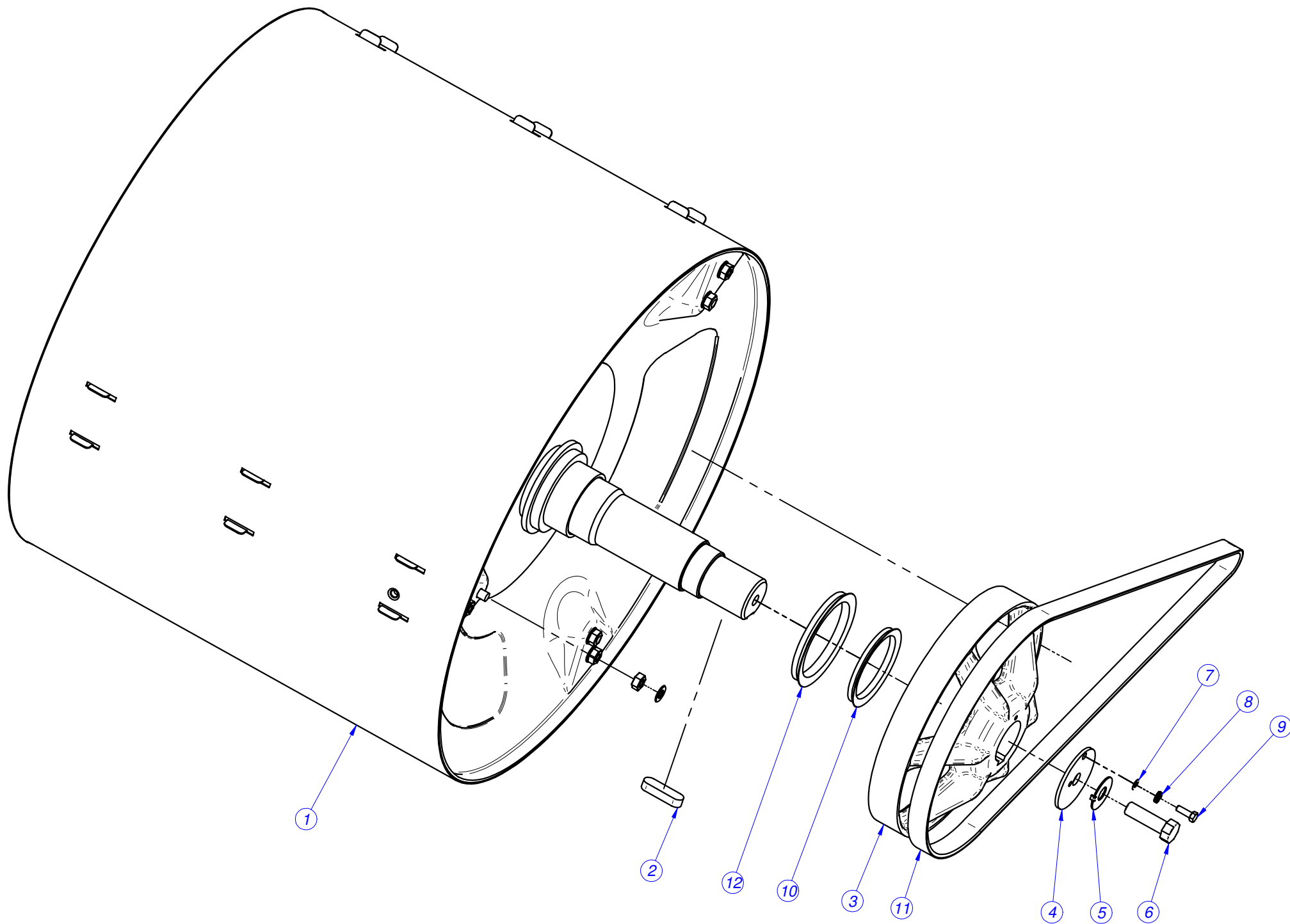


MOD.	WASHER EXTRACTOR WED-10 MPP		AREA	TUB	
Nº	REFERENCE	DENOMINATION	QUANT.		
1	P616117000	COMPLETE TUB 10	1		
2	P616011000	BOLT SUPPORT 10	3		
3	P616003000	TUB BASE REINFORCEMENT 10	1		
4	Q232040000	WASHER A6	3		
5	Q122045000	BOLT, ALLEN M6x35 INOX	3		
6	P616004000	BEARING SUPPORT 10	1		
7	Q271301000	SAFETY WASHER 10.5 DIN 463	18		
8	Q012076000	HEX. BOLT M12x40 INOX	6		
9	P626015000	DRAINAGE PIPE	1		
10	P616008000	BEARING 6209-2Z	1		
11	P616009000	BEARING 6211-2RS1	1		
12	Q301044000	INT. SAFETY RING 85	1		
13	Q012068000	HEX. BOLT M10x55 DIN 931	6		
14	Q221306000	HEX.SCREW.AUT.M10 8.8 ZINC	6		
15	Z953003000	RUBBER BUSHING FOR THERMOSTAT	1		
16	P503025000	THERMOSTAT	1		
17	P616005000	COUNTER RETAINER BUSHING 8	1		
18	P613008000	HEATING ELEMENT 2000W	3		
19	Q122034000	BOLT, ALLEN M5x30 INOX	3		
20	Q307073000	"O" RING. 102x3	1		
21	P616007000	BUSHING GASKET SEALS 10	1		
22	P616104000	TUB FRONT GASKET 10	1		

MOD.	WASHER EXTRACTOR WED-13		AREA	TUB	
Nº	REFERENCE	DENOMINATION	QUANT.		
1	P626115000	COMPLETE TUB 13	1		
2	P626014000	BOLT SUPPORT 13	3		
3	P626001000	TUB BASE REINFORCEMENT 13	1		
4	Q232040000	WASHER A6	3		
5	Q122045000	ALLEN BOLT M6x35 INOX	3		
6	P626002000	BEARING SUPPORT 13	1		
7	Q271302000	SAFETY WASHER 13 DIN 463	18		
8	Q151529000	HEX BOLT M12x55	6		
9	P626015000	DRAINAGE PIPE	1		
10	P626008000	BEARING 6210-2Z	1		
11	P626009000	BEARING 6212-2RS1	1		
12	Q301030000	INT. SAFETY RING 90	1		
13	Q151530000	HEX BOLT M14x50 DIN 931	6		
14	Q221307000	HEX NUT AUT.M12	6		
15	Z953003000	RUBBER BUSHING FOR THERMOSTAT	1		
16	P503025000	THERMOSTAT	1		
17	P626003000	COUNTER RETAINER BUSHING 13	1		
18	P623005000	HEATING ELEMENT 3000w	3		
19	Q122034000	BOLT, ALLEN M5x30 INOX	3		
20	Q307075000	"O" RING. 114x3	1		
21	P626007000	BUSHING GASKET SEALS 13	1		
22	P626110000	TUB FRONT GASKET 13	1		



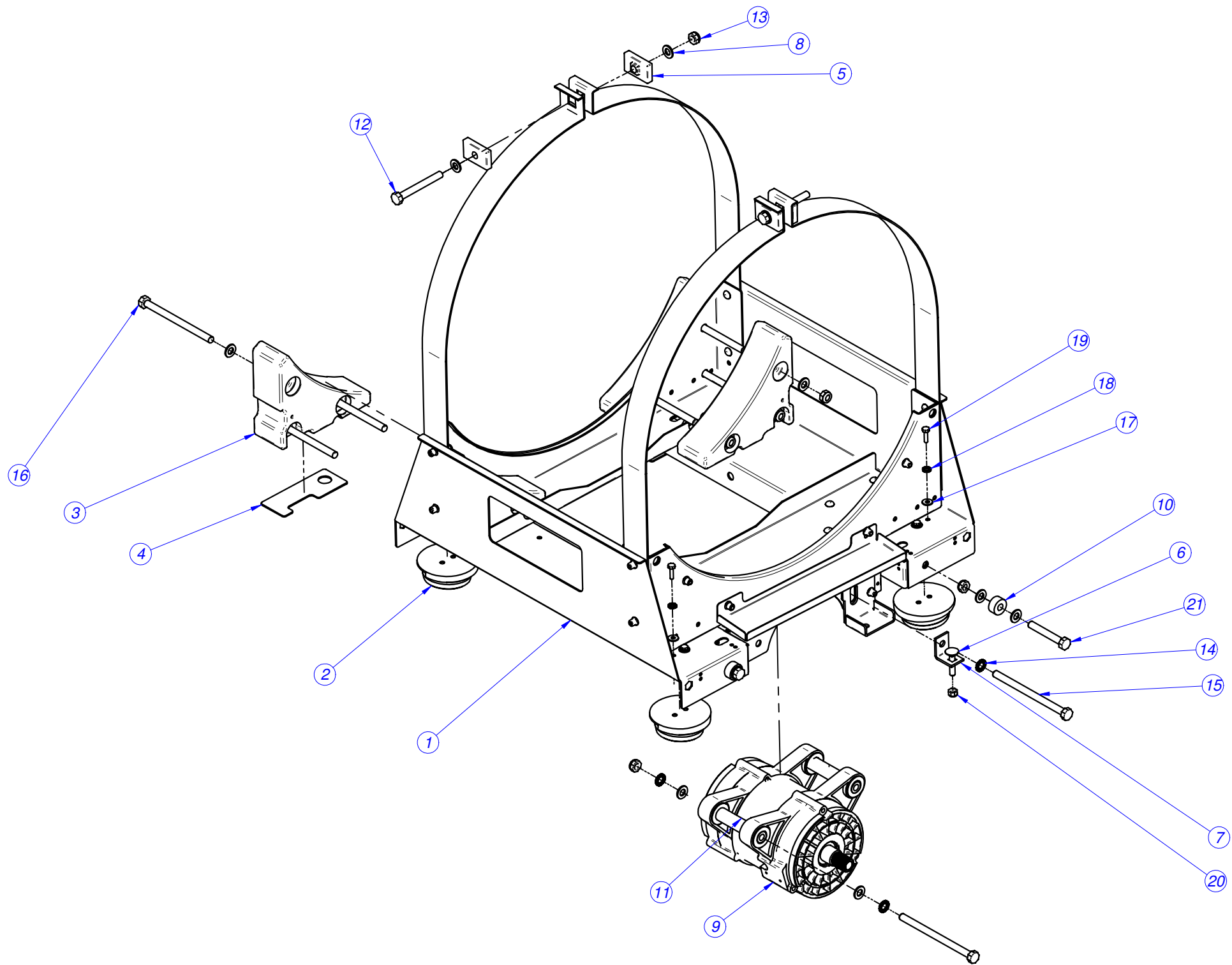
MOD.	WASHER EXTRACTOR WED-18		AREA	TUB	
Nº	REFERENCE	DENOMINATION	QUANT.		
1	P636107000	COMPLETE TUB 18	1		
2	P636009000	BOLT SUPPORT 18	3		
3	P636001000	TUB BASE REINFORCEMENT 18	1		
4	Q232040000	WASHER A6	3		
5	Q122045000	BOLT, ALLEN M6x35 INOX	3		
6	P636002000	BEARING SUPPORT 18	1		
7	Q271303000	SAFETY WASHER 15 DIN 463	18		
8	Q151535000	M14x70 12.9 DIN 933	6		
9	P626015000	DRAINAGE PIPE	1		
10	P626009000	BEARING 6212-2RS1	1		
11	P636008000	BEARING 6214-2RS1	1		
12	Q301036000	SAF. RING SEEGER J110x4	1		
13	Q151589000	HEX. BOLT M14x70 10.9	6		
14	Q221338000	HEX NUT AUT.M14	6		
15	Z953003000	RUBBER BUSHING FOR THERMOSTAT	1		
16	P503025000	THERMOSTAT	1		
17	P636003000	COUNTER RETAINER BUSHING 18	1		
18	P633002000	HEATING ELEMENT LA-18 4000W	3		
19	Q122034000	BOLT, ALLEN M5x30 INOX	3		
20	Q307077000	"O" RING. 128x3	1		
21	P636005000	BUSHING GASKET SEALS 18	1		
22	P636108000	TUB FRONT GASKET 18	1		



MOD.	WASHER EXTRACTOR WED-10 MPP		AREA	DRUM	
Nº	REFERENCE	DENOMINATION	QUANT.		
1	P614916000	COMPLETE DRUM 10	1		
2	P614914000	KEY 12x8x40	1		
3	P616006000	DRUM PULLEY 10	1		
4	P616010000	PULLEY WASHER 10	1		
5	Q301329000	SAFETY WASHER 13	1		
6	Q011376000	HEX.SCREW.M12X40 H.ZINC	1		
7	Q232030000	WASHER A5	1		
8	Q242030000	WASHER A5 A.304	1		
9	Q012032000	HEX BOLT M5X15 A.304	1		
10	P614911000	V-RING RETAINER 65	1		
11	P615902000	BELT LA-10	1		
12	P634911000	V-RING RETAINER 78	1		

MOD.	WASHER EXTRACTOR WED-13		AREA	DRUM	
Nº	REFERENCE	DENOMINATION	QUANT,		
1	P624909000	COMPLETE DRUM 13	1		
2	P626010000	PIN 14x9x50	1		
3	P626006000	DRUM PULLEY 13.18	1		
4	P626012000	PULLEY WASHER 13.18	1		
5	Q301329000	SAFETY WASHER 13	1		
6	Q011376000	HEX.SCREW.M12X40 H.ZINC	1		
7	Q232030000	WASHER A5	1		
8	Q242030000	WASHER A5 A.304	1		
9	Q012032000	HEX BOLT M5X15 A.304	1		
10	P624913000	V-RING RETAINER VA070	1		
11	P625903000	BELT 13	1		
12	P624914000	V-RING RETAINER VA085	1		

MOD.	WASHER EXTRACTOR WED-18		AREA	DRUM	
Nº	REFERENCE	DENOMINATION	QUANT.		
1	P634910000	COMPLETE DRUM 18	1		
2	P626010000	PIN 14x9x50	1		
3	P626006000	DRUM PULLEY 13.18	1		
4	P626012000	PULLEY WASHER 13.18	1		
5	Q301329000	SAFETY WASHER 13	1		
6	Q011376000	HEX.SCREW.M12X40 H.ZINC	1		
7	Q232030000	WASHER A5	1		
8	Q242030000	WASHER A5 A.304	1		
9	Q012032000	HEX BOLT M5X15 A.304	1		
10	P634911000	V-RING RETAINER 78	1		
11	P635902000	BELT 18	1		
12	P634912000	V-RING RETAINER 92	1		

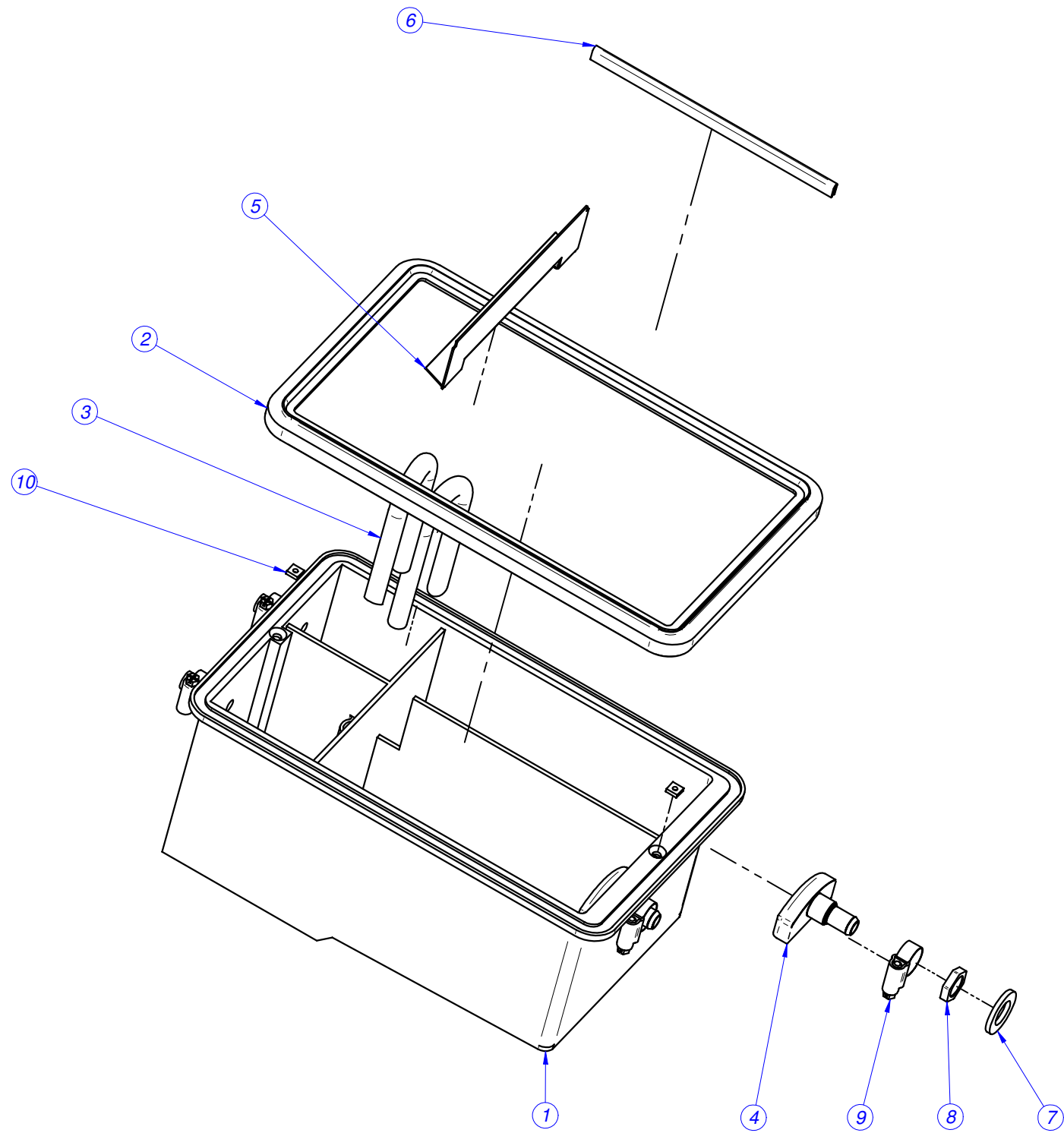


MOD.	WASHER EXTRACTOR WED-10 MPP		AREA	CRADLE	
Nº	REFERENCE	DENOMINATION	QUANT.		
1	P610216000	COMPLETE CRADLE 10	1		
2	P620106000	SPRING BASE	4		
3	P610207000	COUNTERWEIGHT 10	4		
4	P610212000	COUNTERWEIGHT SUPPORT 8,10,13	2		
5	P620208000	TUB FASTENER	4		
6	Q151393000	SCREW DIN 603 M8x35	1		
7	P620214000	MOTOR TENSOR	1		
8	Q232060000	WASHER A10	27		
9	P615906000	MOTOR 10	1		
10	P620107000	SHOCK ABSORBER BUSHING	4		
11	P615908000	MOTOR BRACKET PIPE 10	2		
12	Q011360000	HEXAGONAL SCREW M10X80	2		
13	Q221306000	HEX.SCREW.AUT.M10 8.8 ZINC	14		
14	Q241560000	WASHER A10 DIN6798	4		
15	Q151525000	HEX BOLT M10X150(8.8) DIN931	2		
16	Q151394000	HEX BOLT M10x140	6		
17	Q302022000	WASHER 16X6X1.2 A.304	8		
18	Q242040000	WASHER A6 A.304	8		
19	Q012043000	HEX BOLT M6X20 A.304	8		
20	Q221309000	HEX.SCREW.AUT.M8 8.8 ZINC	1		
21	Q011369000	HEX.SCREW.M10X70 H.ZINC	4		

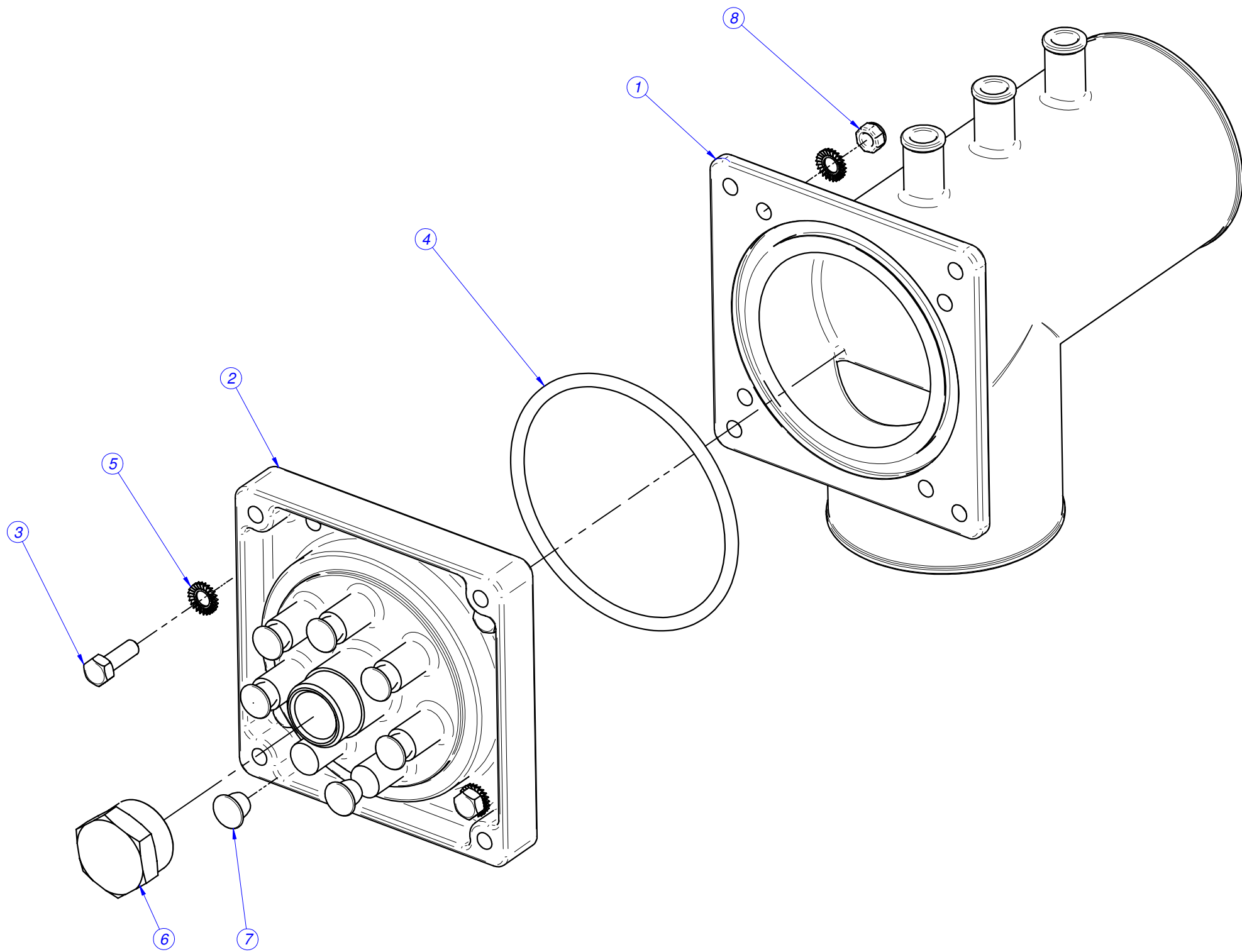
MOD.	WASHER EXTRACTOR WED-13		AREA	CRADLE	
Nº	REFERENCE	DENOMINATION	QUANT.		
1	P620207000	COMPLETE CRADLE 13	1		
2	P620106000	SPRING BASE	4		
3	P620201000	COUNTERWEIGHT 13	4		
4	P610212000	COUNTERWEIGHT SUPPORT 8, 13	2		
5	P620208000	TUB FASTENER	4		
6	Q151393000	SCREW DIN 603 M8x35	1		
7	P620214000	MOTOR TENSOR	1		
8	Q232060000	WASHER A10	27		
9	P625905000	MOTOR 13	1		
10	P620107000	SHOCK ABSORBER BUSHING	8		
11	P625901000	MOTOR BRACKET PIPE 13	2		
12	Q011360000	HEXAGONAL SCREW M10X80	2		
13	Q221306000	HEX.SCREW.AUT.M10 8.8 ZINC	14		
14	Q241560000	WASHER A10 DIN6798	4		
15	Q151525000	HEX BOLT M10X150(8.8) DIN931	2		
16	Q151394000	HEX BOLT M10x140	6		
17	Q302022000	WASHER 16X6X1.2 A.304	8		
18	Q242040000	WASHER A6 A.304	8		
19	Q012043000	HEX BOLT M6X20 A.304	8		
20	Q221309000	HEX.SCREW.AUT.M8 8.8 ZINC	1		
21	Q011369000	HEX.SCREW.M10X70 H.ZINC	4		



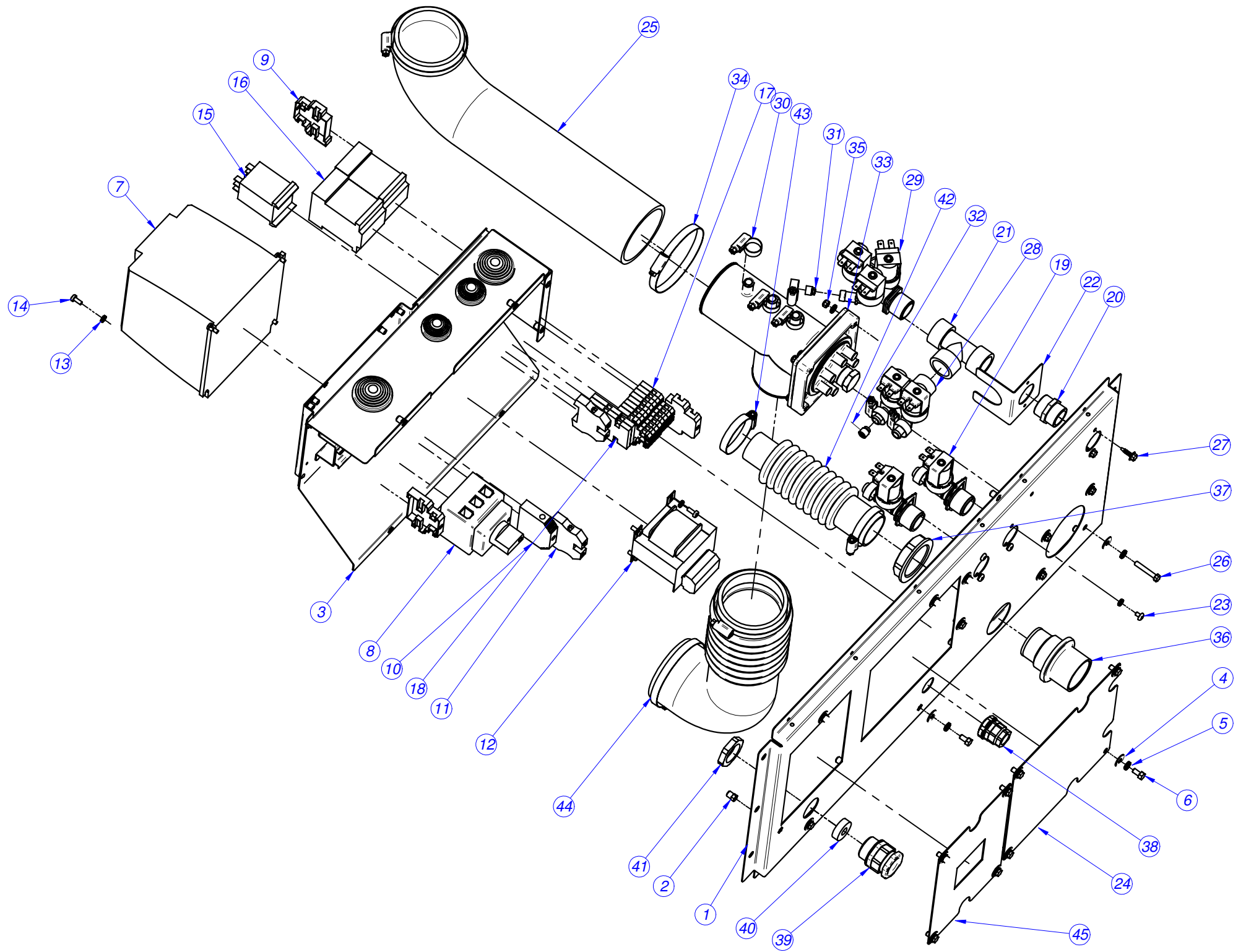
MOD.	WASHER EXTRACTOR WED-18		AREA	CRADLE	
Nº	REFERENCE	DENOMINATION	QUANT.		
1	P630207000	COMPLETE CRADLE 18	1		
2	P620106000	SPRING BASE	4		
3	P630212000	FRONT COUNTERWEIGHT 18	4		
3a	P630218000	REAR COUNTERWEIGHT 18	4		
4	P610212000	COUNTERWEIGHT SUPPORT 8, 13	2		
5	P620208000	TUB FASTENER	4		
6	Q151393000	SCREW DIN 603 M8x35	1		
7	P620214000	MOTOR TENSOR	1		
8	Q232060000	WASHER A10	27		
9	P635906000	MOTOR 18	1		
10	P620107000	SHOCK ABSORBER BUSHING	8		
11	P635907000	MOTOR BRACKET PIPE 18	2		
12	Q011360000	HEXAGONAL SCREW M10X80	2		
13	Q221306000	HEX.SCREW.AUT.M10 8.8 ZINC	14		
14	Q241560000	WASHER A10 DIN6798	4		
15	Q151525000	HEX BOLT M10X150(8.8) DIN931	2		
16	Q151394000	HEX BOLT M10x140	6		
17	Q302022000	WASHER 16X6X1.2 A.304	8		
18	Q242040000	WASHER A6 A.304	8		
19	Q012043000	HEX BOLT M6X20 A.304	8		
20	Q221309000	HEX.SCREW.AUT.M8 8.8 ZINC	1		
21	Q011369000	HEX.SCREW.M10X70 H.ZINC	4		



MOD.	WASHER EXTRACTOR WED-8-10-13-18		AREA	TRAY	
Nº	REFERENCE	DENOMINATION	QUANT.		
1	P440700000	DETERGENT TRAY	1		
2	P500702000	TRAY JOINT 1003431	1		
3	P440702000	SIPHON PIPE	2		
4	P440701000	DETERGENT DISPERSER	2		
5	P440715000	BRACKET PROTECTION	1		
6	P440721000	REINFORCEMENT PROFILE	1		
7	Q301302000	FLAT WASHER A17	2		
8	Q223018000	NUT 16X1.5	2		
9	Q881305000	CLAMP 25-40	4		
10	Q222004000	SQUARE NUT M.4	2		



MOD.	WASHER EXTRACTOR WED-8-10-13-18		AREA	DOSING	
Nº	REFERENCE	DENOMINATION	QUANT.		
	P620707000	COMPLETE DOSING	1		
1	P620701000	INT. DISPENSER INLET P	1		
2	P620706000	OUTER DOSING INLET	1		
3	Q012032000	HEX BOLT M5X15 A.304	4		
4	Q307081000	"O" RING 75x4	1		
5	Q242030000	WASHER A5 A.304	8		
6	P620710000	COVER 1/2"	1		
7	P620709000	DISPENSER PLUG	7		
8	Q222030000	SELF-LOCK.NUT.M5	4		

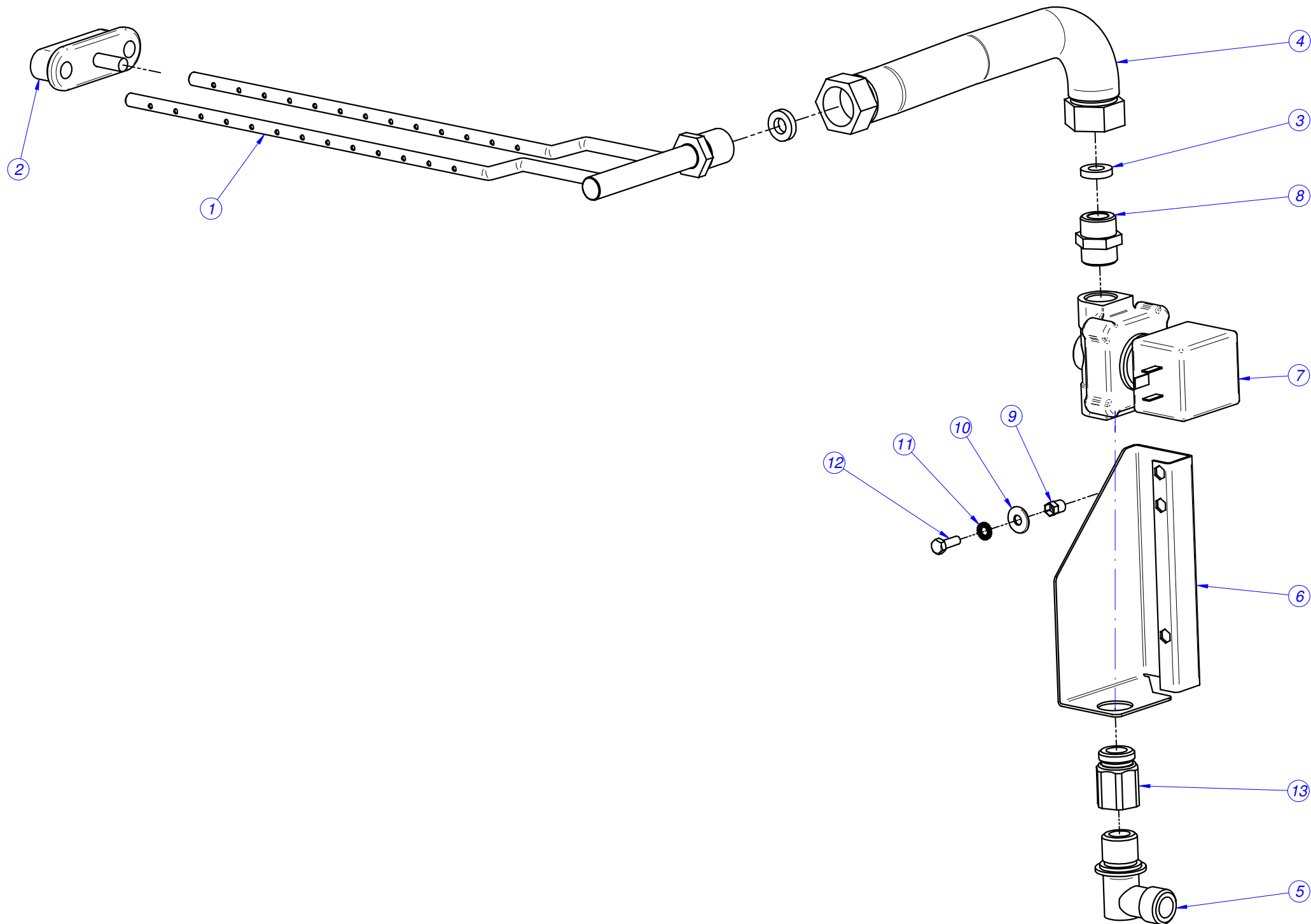


MOD.	WASHER EXTRACTOR WED-8-10 MPP		AREA	SOLENOID SUPPORT	
Nº	REFERENCE	DENOMINATION	QUANT.		
1	P610325000	INLETS REAR PANEL 8 V2	1		
2	Q221342000	HEXAGONAL RIVET M5	14		
3	P620347000	SUPPLY PANEL HOLDER COMP.V2	1		
4	Q302022000	WASHER 16X6X1.2 A.304	18		
5	Q242030000	WASHER A5 A.304	22		
6	Q012031000	HEX BOLT M5X10 A.304	14		
7	P613007000	FRECUENCY INVERTER 1.1 Kw	1		
8	P623003000	SECTION SWITCH 32A	1		
9	Z263303000	END STOP	3		
10	Z263302000	BLUE THROUGH TERMINAL	1		
11	P453026000	TERMINAL TIER 10 WPE-10103.O	2		
12	P623028000	TRANSFORMER 220/-20-0-20 VAC	1		
13	Q242020000	WASHER A.4 A304	12		
14	Q032021000	CURVED SCREW M4X10	8		
15	Z203062000	RELAY 230V 16A 50-60 HZ	1		
16	Z203050000	CONTAC. SIRIUS 3R 230V.50-60	2		
17	P623006000	TERMINAL STRIP 2 PISOS	8		
18	R073005000	FUSE HOLDER TERMINALS	2		
19	Z701135000	E.V.SIMP.220V	2		
20	Z102301000	HOSE 3/4"	1		
21	P535020000	T at 90°-3/4"	1		
22	P535003000	SOLENOID VALVE STOP	1		
23	Q151320000	CURVED SCREW.M4X6 H.ZINC	4		
24	P620342000	REAR COVER V2	1		
25	P610701000	DISPENSER TRAY PIPE 13	1		
26	Q011353000	HEXAGONAL SCREW M5X30	4		
27	Q151323000	SCREW BIT 4.8X16	2		
28	P255001000	DOUBLE SOLENOID VALVE	1		
29	Z611123000	E.V. TRIPLE SOLENOID VALVE	1		
30	Q881302000	CLAMP 12-20	10		
31	P443042000	REGULATOR 3L NE.254.023	1		
32	Z601156000	REGULATOR 8L RED 254.034	1		
33	P620707000	COMPLETE DOSING INLET	1		
34	Q881326000	CLAMP 70-90	4		
35	Q222030000	SELF-LOCK.NUT.M5	4		
36	Z740701000	STEAM VACUUM PLASTIC PIPE	1		
37	Z710708000	WALL BUSHING NUT	1		
38	R073004000	STUFFING BOX	1		
39	R023013000	STUFFING BOX PG-21	1		
40	R023026000	RUBBER SEAL (GAES)	1		
41	Q223016000	SCREW THREAD Pg 21	1		
42	P620708000	STEAM OUTLET PIPE	1		
43	Q881306000	CLAMP 32-50L	2		
44	P610704000	TUB DISPENSER PIPE	1		
45	P620341000	CIRCUIT BREAKER COVER V2	1		

MOD.	WASHER EXTRACTOR WED-13		AREA	SOLENOID SUPPORT	
Nº	REFERENCE	DENOMINATION	QUANT.		
1	P620331000	INLETS REAR PANEL 13 V2	1		
2	Q221342000	HEXAGONAL RIVET M5	14		
3	P620347000	SUPPLY PANEL HOLDER COMP.V2	1		
4	Q302022000	WASHER 16X6X1.2 A.304	18		
5	Q242030000	WASHER A5 A.304	22		
6	Q012031000	HEX BOLT M5X10 A.304	14		
7	P623002000	FRECUENCY INVERTER 1.5 Kw	1		
8	P623003000	SECTION SWITCH 32A	1		
9	Z263303000	END STOP	3		
10	Z263302000	BLUE THROUGH TERMINAL	1		
11	P453026000	TERMINAL TIER 10 WPE-10103.O	2		
12	P623028000	TRANSFORMER 220/20-0-20 VAC	1		
13	Q242020000	WASHER A.4 A304	12		
14	Q032021000	CURVED SCREW M4X10	8		
15	Z203062000	RELAY 230V 16A 50-60 HZ	1		
16	Z203050000	CONTAC. SIRIUS 3R 230V.50-60	2		
17	P623006000	TERMINAL STRIP 2 PISOS	8		
18	R073005000	FUSE HOLDER TERMINALS	2		
19	Z701135000	E.V.SIMP.220V COD.255.208	2		
20	Z102301000	HOSE 3/4"	1		
21	P535020000	T at 90°-3/4"	1		
22	P535003000	SOLENOID VALVE STOP	1		
23	Q151320000	CURVED SCREW.M4X6 H.ZINC	4		
24	P620342000	REAR COVER V2	1		
25	P620705000	DISPENSER TRAY PIPE 13	1		
26	Q011353000	HEXAGONAL SCREW M5X30	4		
27	Q151323000	SCREW BIT 4.8X16	2		
28	P255001000	DOUBLE SOLENOID VALVE	1		
29	Z611123000	TRIPLE SOLENOID VALVE	1		
30	Q881302000	CLAMP 12-20	10		
31	P443042000	REGULATOR 3L NE.254.023	1		
32	Z601156000	REGULATOR 8L RED 254.034	1		
33	P620707000	COMPLETE DOSING INLET	1		
34	Q881326000	CLAMP 70-90	4		
35	Q222030000	SELF-LOCK.NUT.M5	4		
36	Z740701000	STEAM VACUUM PLASTIC PIPE	1		
37	Z710708000	WALL BUSHING NUT	1		
38	R073004000	STUFFING BOX	1		
39	R023013000	STUFFING BOX PG-21	1		
40	R023026000	RUBBER SEAL (GAES)	1		
41	Q223016000	SCREW THREAD Pg 21	1		
42	P620708000	STEAM OUTLET PIPE	1		
43	Q881306000	CLAMP 32-50L	2		
44	P620702000	TUB DISPENSER PIPE 13	1		
45	P620341000	CIRCUIT BREAKER COVER V2	1		



MOD.	WASHER EXTRACTOR WED-18		ZONA	SOLENOID SUPPORT	
Nº	REFERENCE	DENOMINATION	QUANT.		
1	P630317000	INLETS REAR PANEL 18 V2	1		
2	Q221342000	HEXAGONAL RIVET M5	14		
3	P620347000	SUPPLY PANEL HOLDER COMP.V2	1		
4	Q302022000	WASHER 16X6X1.2 A.304	18		
5	Q242030000	WASHER A5 A.304	22		
6	Q012031000	HEX BOLT M5X10 A.304	14		
7	P633005000	FRECUENCY INVERTER 18 PROGRAMMED	1		
8	P623003000	SECTION SWITCH 32A	1		
9	Z263303000	END STOP	3		
10	Z263302000	BLUE THROUGH TERMINAL	1		
11	P453026000	TERMINAL TIER 10 WPE-10103.O	2		
12	P623028000	TRANSFORMER 220/20-0-20 VAC	1		
13	Q242020000	WASHER A.4 A304	12		
14	Q032021000	CURVED SCREW M4X10	8		
15	Z203062000	RELAY 230V 16A 50-60 HZ	1		
16	Z203050000	CONTAC. SIRIUS 3R 230V.50-60	2		
17	P623006000	TERMINAL STRIP 2 PISOS	8		
18	R073005000	FUSE HOLDER TERMINALS	2		
19	Z701135000	E.V.SIMP.220V COD.255.208	2		
20	Z102301000	HOSE 3/4"	1		
21	P535020000	T at 90°-3/4"	1		
22	P535003000	SOLENOID VALVE STOP	1		
23	Q151320000	CURVED SCREW.M4X6 H.ZINC	4		
24	P620342000	REAR COVER V2	1		
25	P620705000	DISPENSER TRAY PIPE 13	1		
26	Q011353000	HEXAGONAL SCREW M5X30	4		
27	Q151323000	SCREW BIT 4.8X16	2		
28	P255001000	DOUBLE SOLENOID VALVE	1		
29	Z611123000	TRIPLE SOLENOID VALVE	1		
30	Q881302000	CLAMP 12-20	10		
31	P443042000	REGULATOR 3L NE.254,023	1		
32	Z601156000	REGULATOR 8L RED 254.034	1		
33	P620707000	COMPLETE DOSING INLET	1		
34	Q881326000	CLAMP 70-90	4		
35	Q222030000	SELF-LOCK.NUT.M5	4		
36	Z740701000	STEAM VACUUM PLASTIC PIPE	1		
37	Z710708000	WALL BUSHING NUT	1		
38	R073004000	STUFFING BOX	1		
39	R023013000	STUFFING BOX PG-21	1		
40	R023026000	RUBBER SEAL (GAES)	1		
41	Q223016000	SCREW THREAD Pg 21	1		
42	P620708000	STEAM OUTLET PIPE	1		
43	Q881306000	CLAMP 32-50L	2		
44	P630701000	TUB DISPENSER PIPE 18	1		
45	P620341000	CIRCUIT BREAKER COVER V2	1		



MOD.	WASHER EXTRACTOR WED-8-10-13- 18		AREA	STEAM	
Nº	REFERENCE	DENOMINATION	QUANT.		
1	P615001000	STEAM JET 10,13,18	1		
2	P445011000	COMPLETE LOCK	1		
3	P615002000	STEAM WASHER 10,13,18	2		
4	P525005000	STEAM PIPE	1		
5	S115013000	BRASS ELBOW	1		
6	P620327000	STEAM VALVE BRACKET	1		
7	P615003000	STEAM VALVE 1/2" 50/60 Hz	1		
8	S205023000	DOUBLE SLEEVE 1/2	1		
9	Q221342000	HEXAGONAL RIVET M5	1		
10	Q302022000	WASHER 16X6X1.2 A.304	1		
11	Q242030000	WASHER A5 A.304	1		
12	Q012032000	HEX BOLT M5X15 A.304	1		
13	X162101000	CONNECTION 1-2	1		

**Wires reference WED-8-10-13-18 MPP**

<i>TEXT</i>	<i>REFERENCE</i>	<i>QUANTITY</i>
<i>General electric wiring (Included the motor wire)</i>	<i>P623007</i>	<i>1</i>
<i>Heating elements wire.</i>	<i>P623008</i>	<i>1</i>
<i>Display card-Relay card wire.</i>	<i>P623009</i>	<i>1</i>
<i>Door lock device wire.</i>	<i>P623010</i>	<i>1</i>
<i>PTC supply coil door.</i>	<i>P643005</i>	<i>1</i>
<i>Inverter-motor wire.</i>	<i>P633006</i>	<i>1</i>