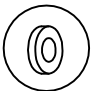


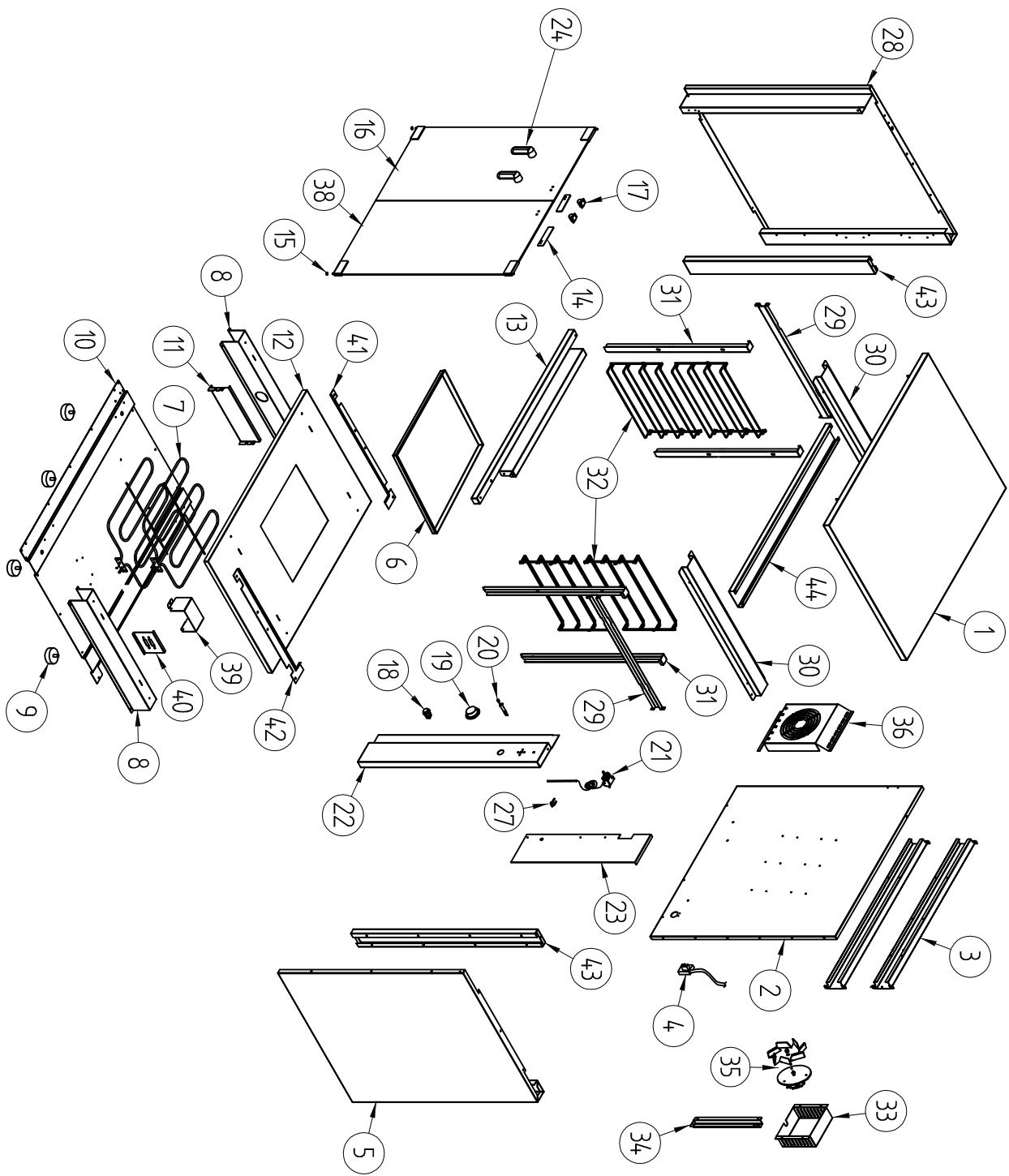


- DETAIL 15
- DETAIL 17
- DETAIL 27



TOLLERANZE: UNI 5307		SCALA		DENOMINAZIONE		DISEGNATO	
4		da 1 a 6	±0,08	ESPLOSO LIEVITATORE 900, 900V		CONTE R.	
3		da 6 a 18	±0,12				
2		da 18 a 50	±0,18				
1		da 50 a 80	±0,23				
19/01/2011	Nuovo manopola con ghiera	da 80 a 120	±0,27				
RELEASE	MODIFICHE	da 120 a 250	±0,33				
		da 250 a 400	±0,42				
		da 400 a oltre	±0,50				
		DATA	22/07/2010	www.piron.it			
		TRATTAMENTO	...	FILE		ESP30046_R01	
		MATERIALE	..	MODELLO		LIEV. 900, 900V	
		VERIFICATO	..	DISEGNO		.....	