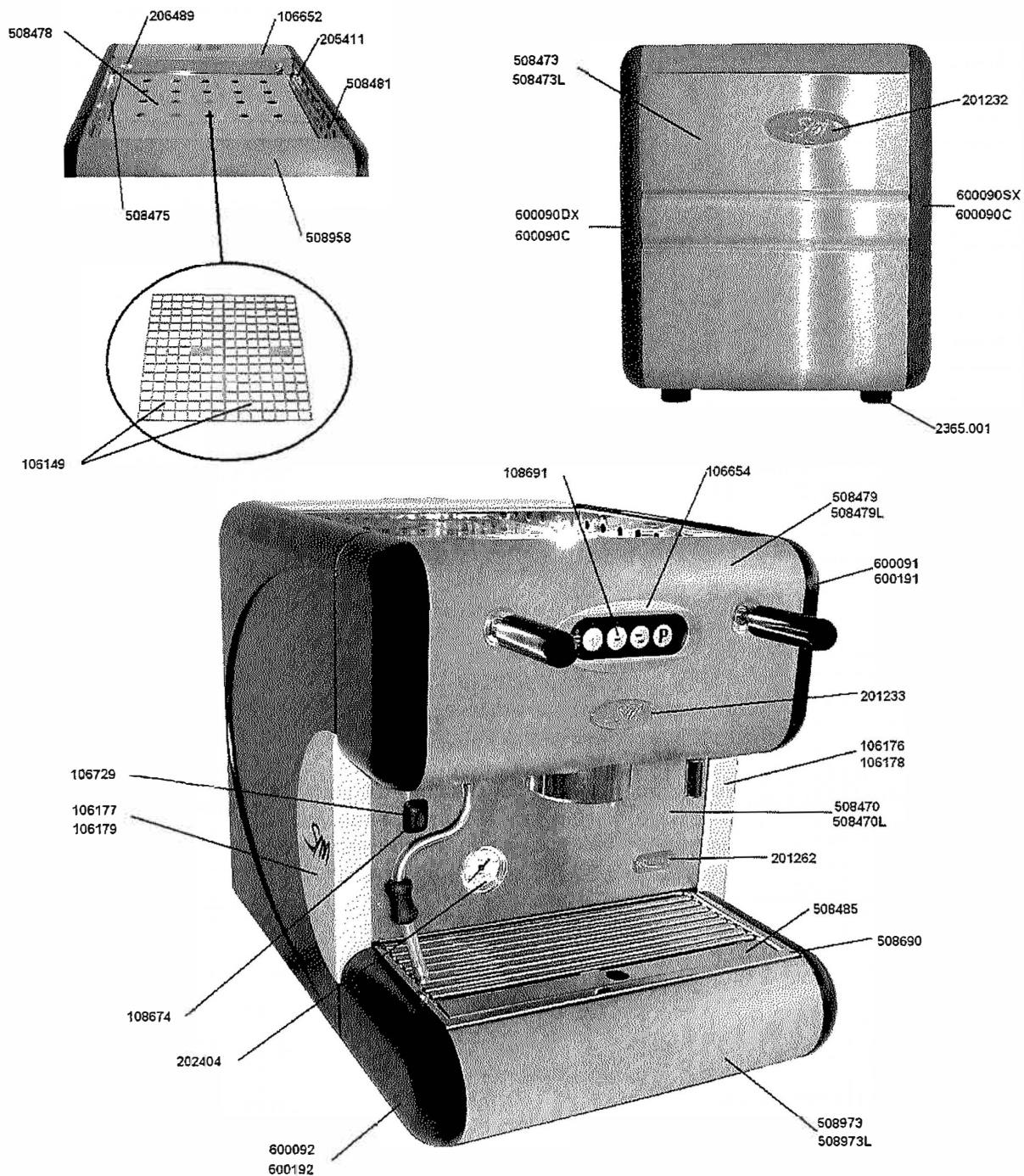




Spare parts for "85 RANGE FLEXA-E MODEL"

Section: Structure and panels

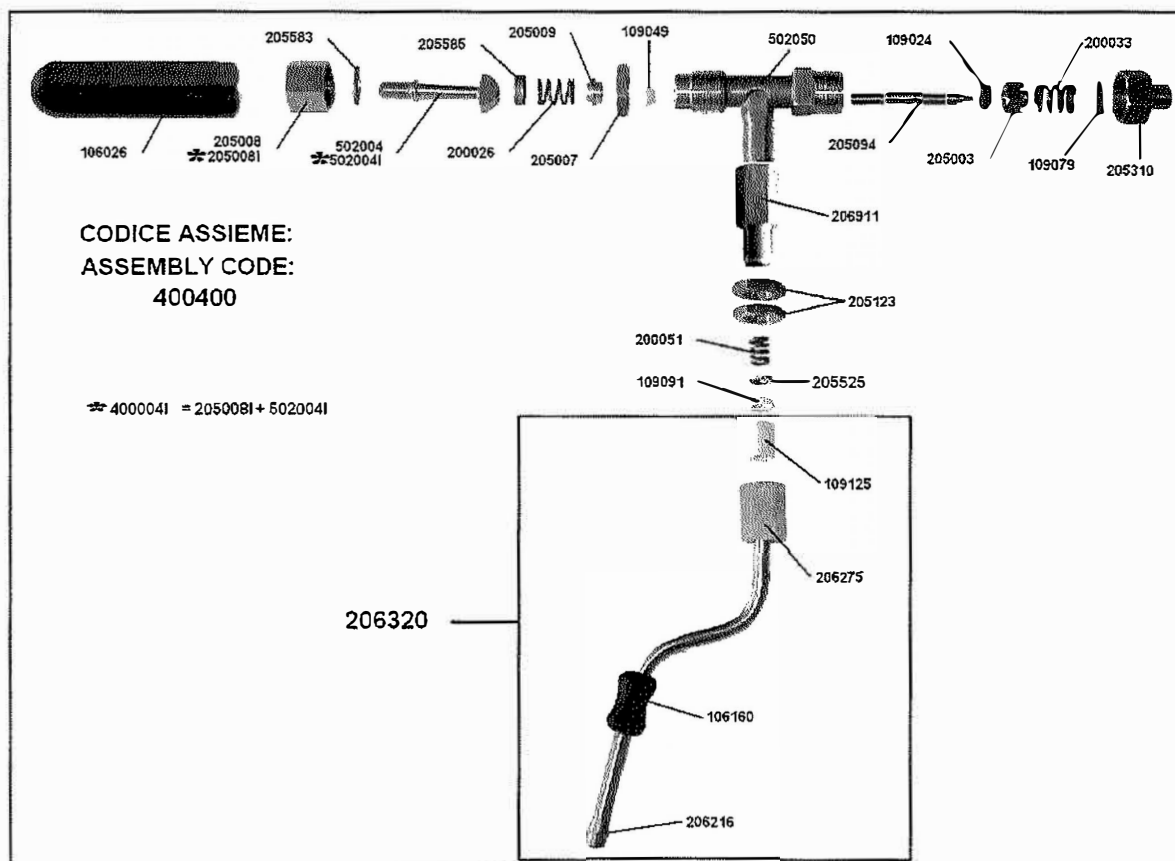
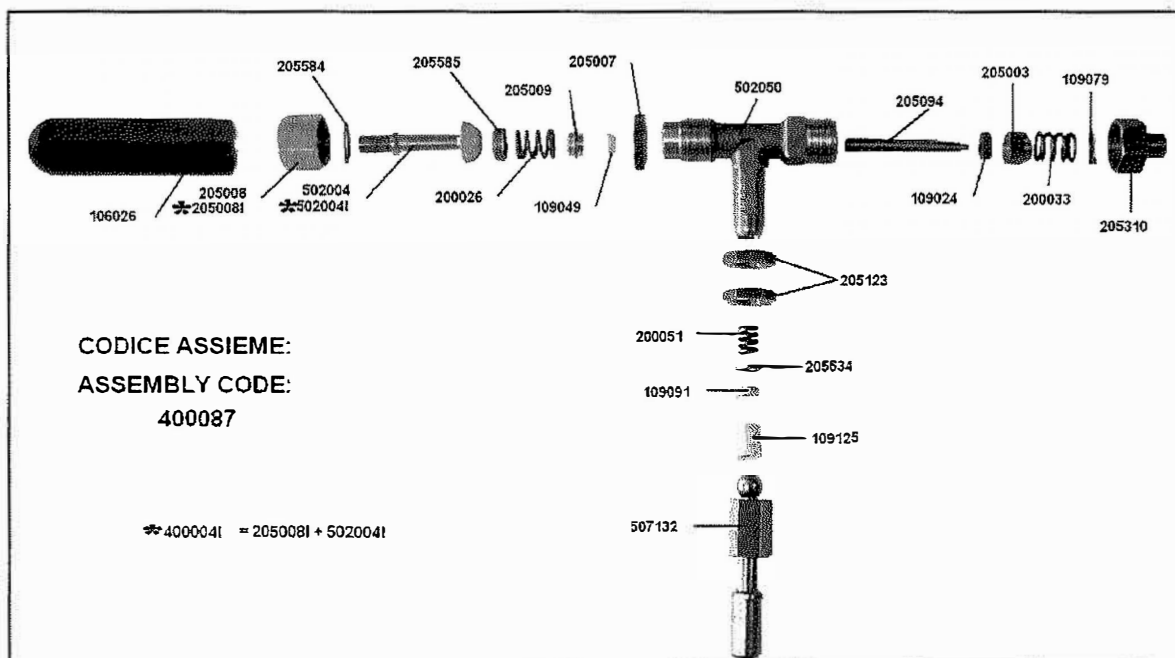


Part Number	Description	P1	
106149	Small cupholder	€	
106176	Right black bow panel	€	
106177	Left black bow panel		€
106178	Right grey bow panel		€
106179	Left grey bow panel	€	
106652	Water tank cap	€	
106654	FLEXA keyboard frame		€
106729	Main switch guard		€
108674	Cupwarmer switch		€
108691	FLEXA Membrane keyboard	€	
201232	SM plate (95,5x38,6)	€	
201233	SM plate (25x22,8)	€	
201262	85-FLEXA-E plate	€	
202404	85-FLEXA-E manometer		€
205411	Upper grid fixing screw	€	
206489	Water tray fixing nut	€	
2365.001	Rubber support Ø = 40	€	
508470	FLEXA side door - satined	€	
508470L	FLEXA side door		€
508473	FLEXA Front side panel - satined	€	
508473L	FLEXA Front side panel	€	
508475	FLEXA Upper tray		€
508478	FLEXA Upper grid		€
508479	Group-cover 85-FLEXA - satined		€
508479L	Group-cover 85-FLEXA		€
508481	FLEXA frame		€
508485	FLEXA Lower grid		€
508690	FLEXA drip tray		€
508958	Upper Group-cover 85 Practical S-E		€
508973	85 Practical basement - satined	€	
508973L	85 Practical basement	€	
600090C	Large chrome lateral panel	€	
600090DX	Large right-side panel	€	
600090SX	Large left-side panel	€	
600091	85 Medium side panel	€	
600092	85 Small side panel		€
600191	85 Medium chrome side panel	€	
600192	85 Small chrome side panel	€	



Spare parts for "85 RANGE FLEXA-E MODEL"

Section: Steam and water valves

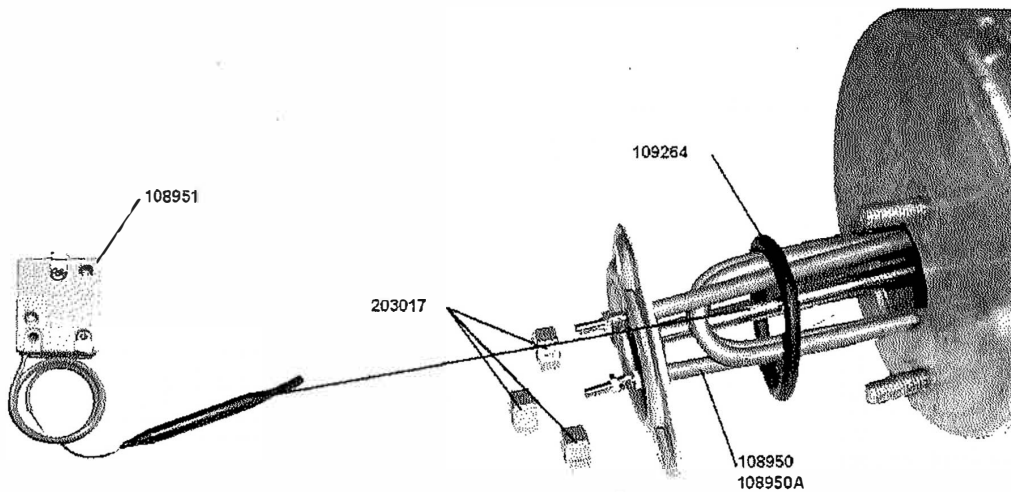
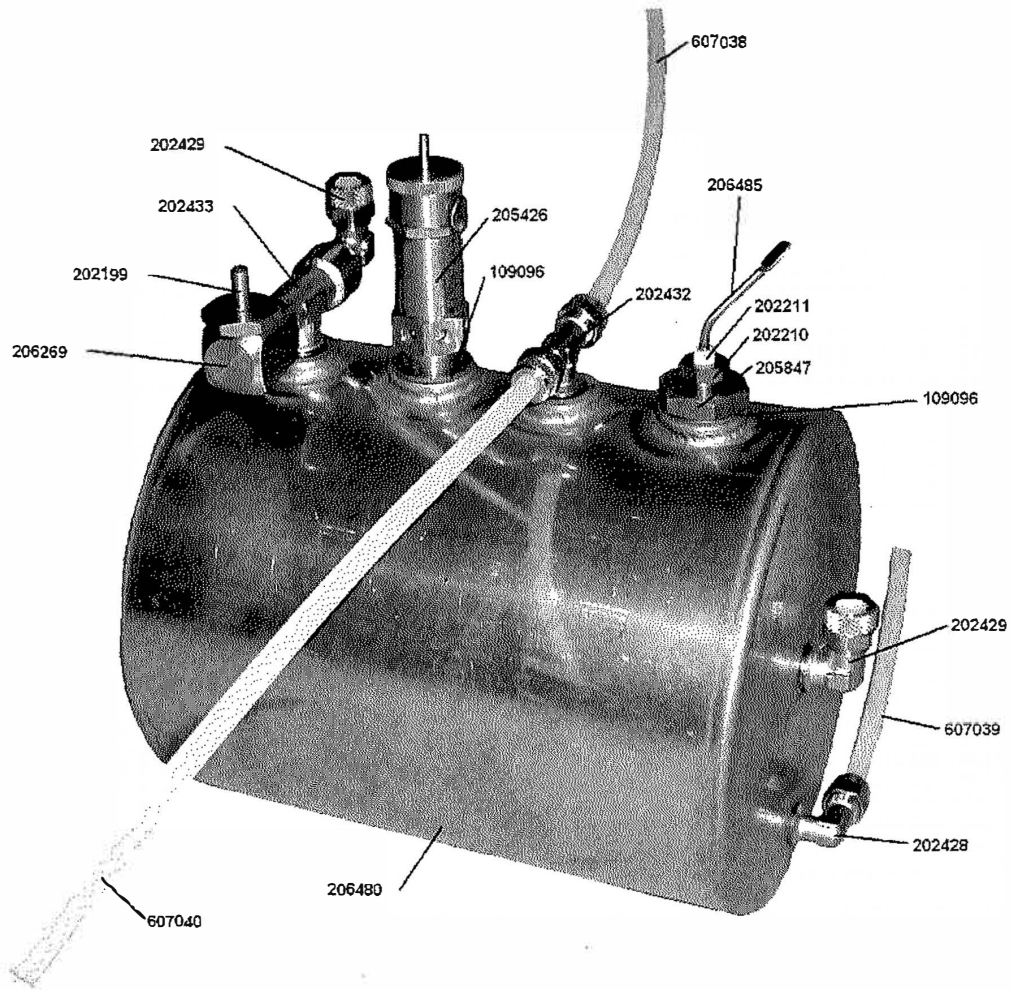


Part Number	Description	Price
106026	Steam-water handle	2 €
106160	Anti-burns sleeve	0 €
109024	Steam-maker's gasket	0 €
109049	Supply water/steam-maker's gasket	0 €
109079	Steam-maker's gasket	0 €
109091	Articulated steam-maker's gasket	0 €
109125	Steam joint sleeve	€
200026	Steam unit spring	€
200033	Steam unit spring	€
200051	Button spring	€
205003	Gasket-holder piston	€
205007	Steam-maker's fixing nut	€
205008	Nichel-plated steam-maker's nut	€
205008I	Steam-maker's nut	€
205009	Gasket-clamp ring	€
205094	Stainless steel wand steam/button	€
205123	Steam nut / check valve	€
205310	Steam-maker's junction	€
205525	Steam-maker's washer	0 €
205534	Water valve ring	0 €
205583	Shaped washer for steam-maker	€
205584	Plain washer for steam-maker	0 €
205585	Spring driving bowl	€
206216	Steam nozzle	1 €
206275	Nut + teflon sleeve	€
206320	Articulated steam wand 85	€
206911	Nipple-steam valve	1 €
400004I	Nut + stainless steel steam lever - assembled	€
400087	Complete water valve	€
400400	Complete steam valve	€
502004	Steam maker's control lever	€
502004I	Stainless steel command lever for steam maker	€
502050	Steam maker's body	€
507132	Complete water pipe	€



Spare parts for "85 RANGE FLEXA-E MODEL"

Section: Steam, water and circulation boiler

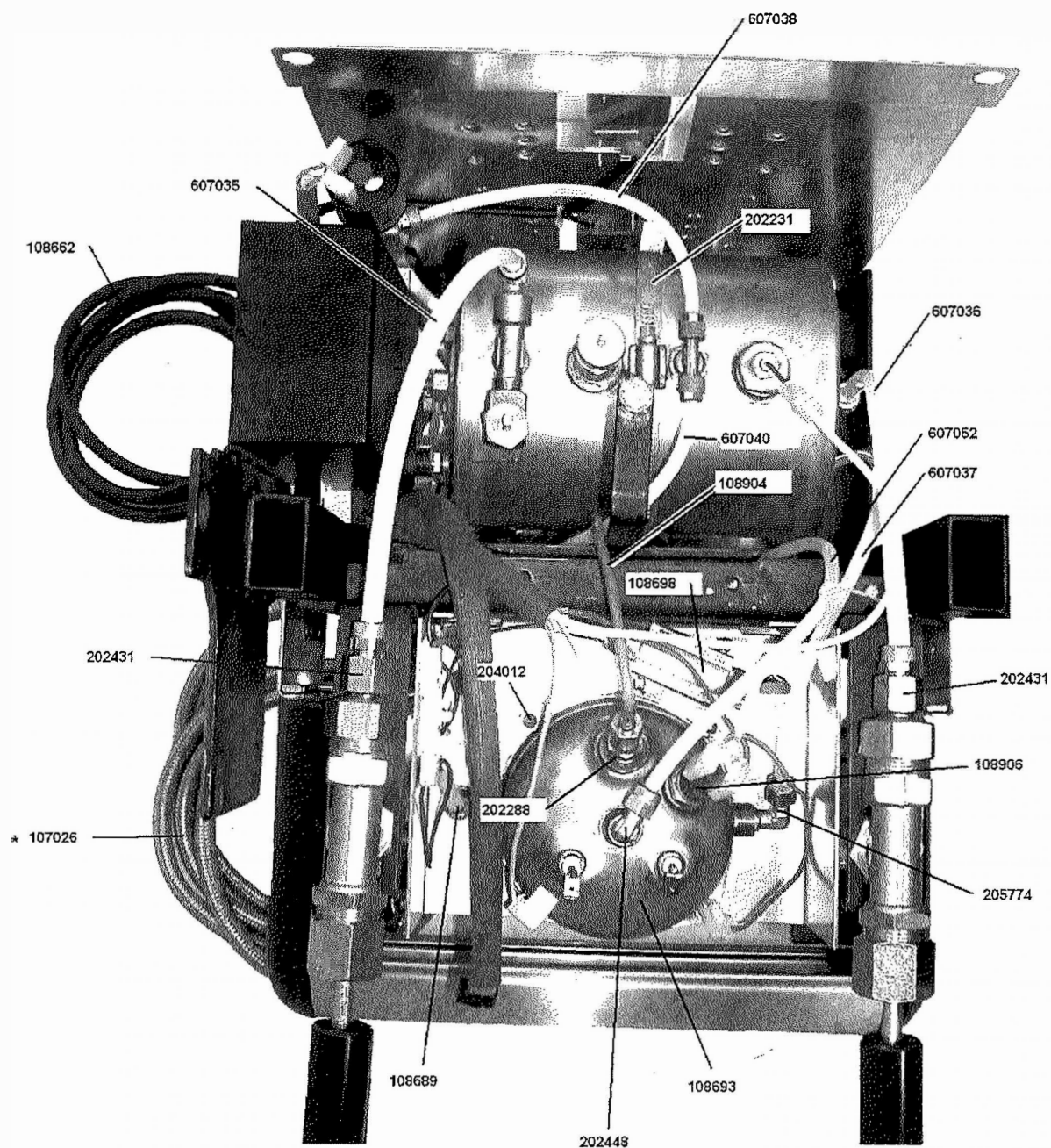


Part Number	Description	P e
108950	FLEXA heat element 230V 2000W	1 €
108950A	FLEXA heat element 115V 1750W	€
108951	Safety thermostat for FLEXA	€
109096	Copper washer 17x23x1,5	€
109264	Silicone gasket OR 6187	€
202199	Vacuum valve	€
202210	TL 10 stuffing	€
202211	TL 10 teflon insulator	€
202428	"L" junction tap 1/4"-6/4"	€
202429	"L" junction tap 1/4"-6/8"	€
202432	"T" junction second tap 1/4"-6/4"	5 €
202433	"T" junction second tap 1/4"-1/4"	€
203017	Nut	€
205426	CE certified boiler safety valve	1 €
205847	Autofill probe connection	€
206269	Vacuum valve connection	€
206480	FLEXA SS boiler	1 4 €
206485	FLEXA autofill probe stem	€
607038	FLEXA pressure switch-boiler pipe L= 190	€
607039	FLEXA boiler-pump pipe L= 120	€
607040	FLEXA boiler-manometer pipe L= 220	€



Spare parts for "85 RANGE FLEXA-E MODEL"

Section: Delivery unit boiler



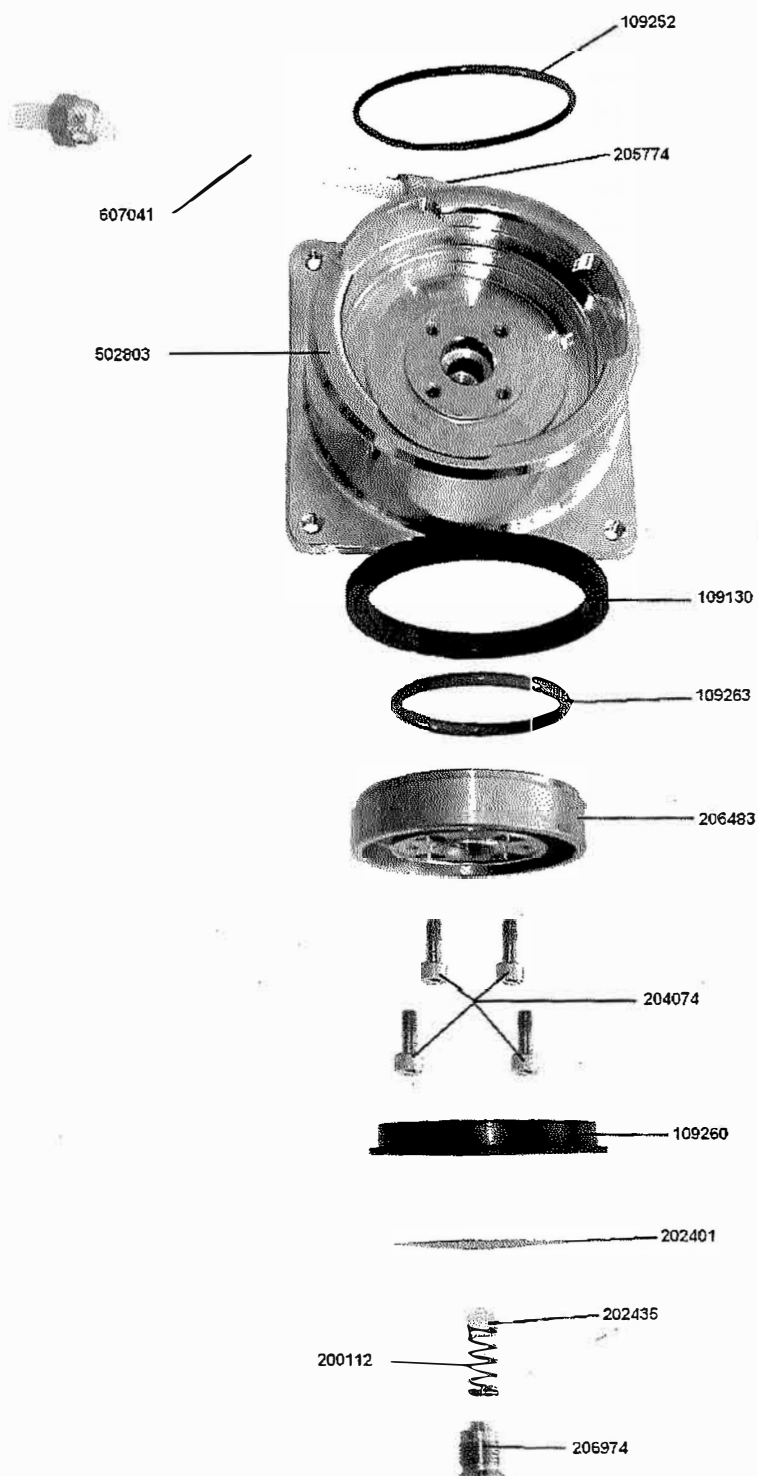
Part Number	Description	Price
107026	Stainless steel flexible pipe 2500 mm 3/8" F+3/8" F90°	1, €
108662	FLEXA feeding cable	5, €
108689	85-FLEXA-E fuseholder	1, €
108693	FLEXA delivery unit 230V boiler	€ 3 €
108698	PTC for 85-FLEXA-E	2, -€
108904	Boiler temperature probe L=520mm	2, !€
108906	Water thermostat	2, €
202288	Straight junction boiler probe	2, €
202231	Boiler sleeve 120-140	2, €
202431	Female straight junction 1/4" 6/8"	2, €
202448	"L" junction conical tap 1/8" FLEXA	2, €
204012	SS screw 6x18 TCCE	2, €
205774	"L" junction tap 6/4" 1/8"	2, €
607035	FLEXA steam pipe L=220	2, €
607036	FLEXA water pipe L=240mm	2, €
607037	FLEXA boiler-pump pipe L=380mm	2, €
607038	FLEXA boiler-pressure switch pipe L=190mm	2, €
607040	FLEXA boiler-manometer pipe L=220mm	2, €
607052	FLEXA electrovalve-boiler pipe L=330mm D.3x6	2, €



Spare parts for "85 RANGE FLEXA-E MODEL"

Section: Delivery unit

*** FINE TABULATO ***

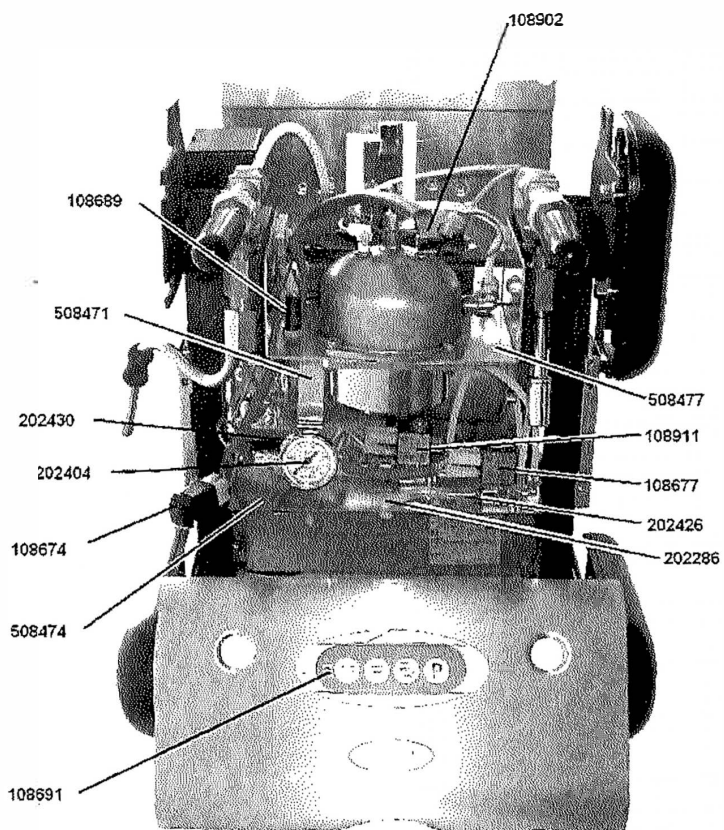
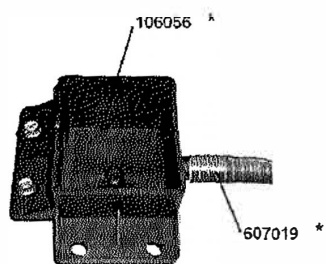
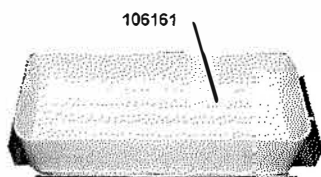
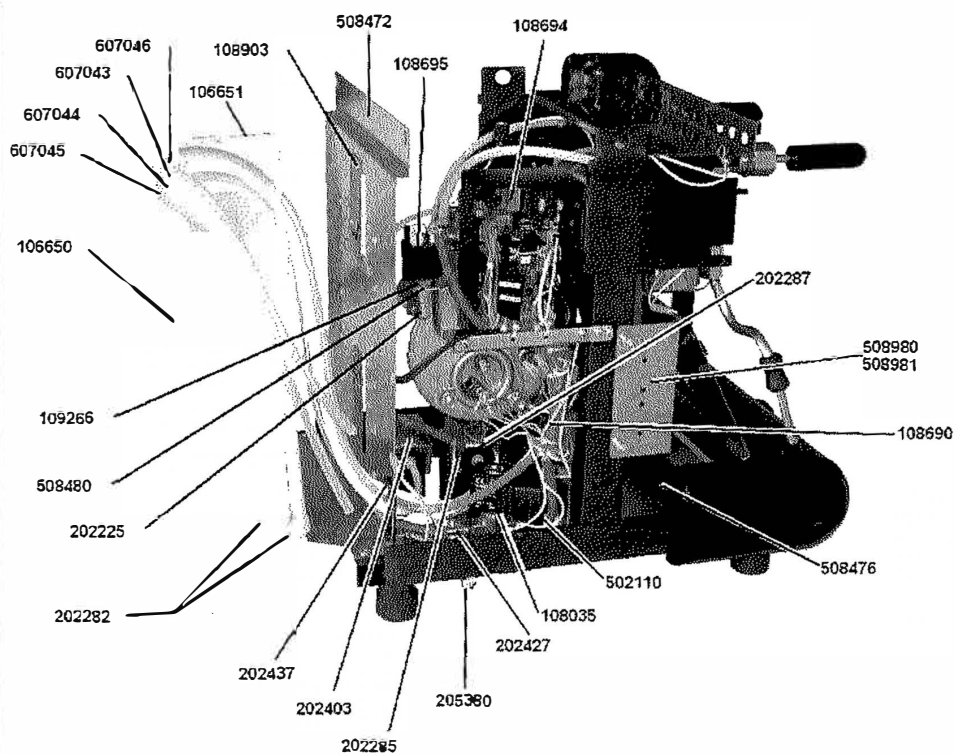


Part Number	Description	Unit Price
109130	MD undercup gasket	€
109252	Silicone 3218 OR Gasket	€
109260	FLEXA pods' gasket	€
109263	FLEXA OR 4150 gutter group	€
200112	4 bar valve spring	€
202401	FLEXA gutter	€
202435	FLEXA 4 bar valve	€
204074	SS screw 4x12 TCCE	€
205774	"L" junction tap 6/4" 1/8"	€
206483	FLEXA Gutter piston	€
206974	Valve special screw	€
502803	FLEXA delivery unit	€
607041	FLEXA electrovalve-unit pipe L=180	€



Spare parts for "85 RANGE FLEXA-E MODEL"

Section: Inner machine

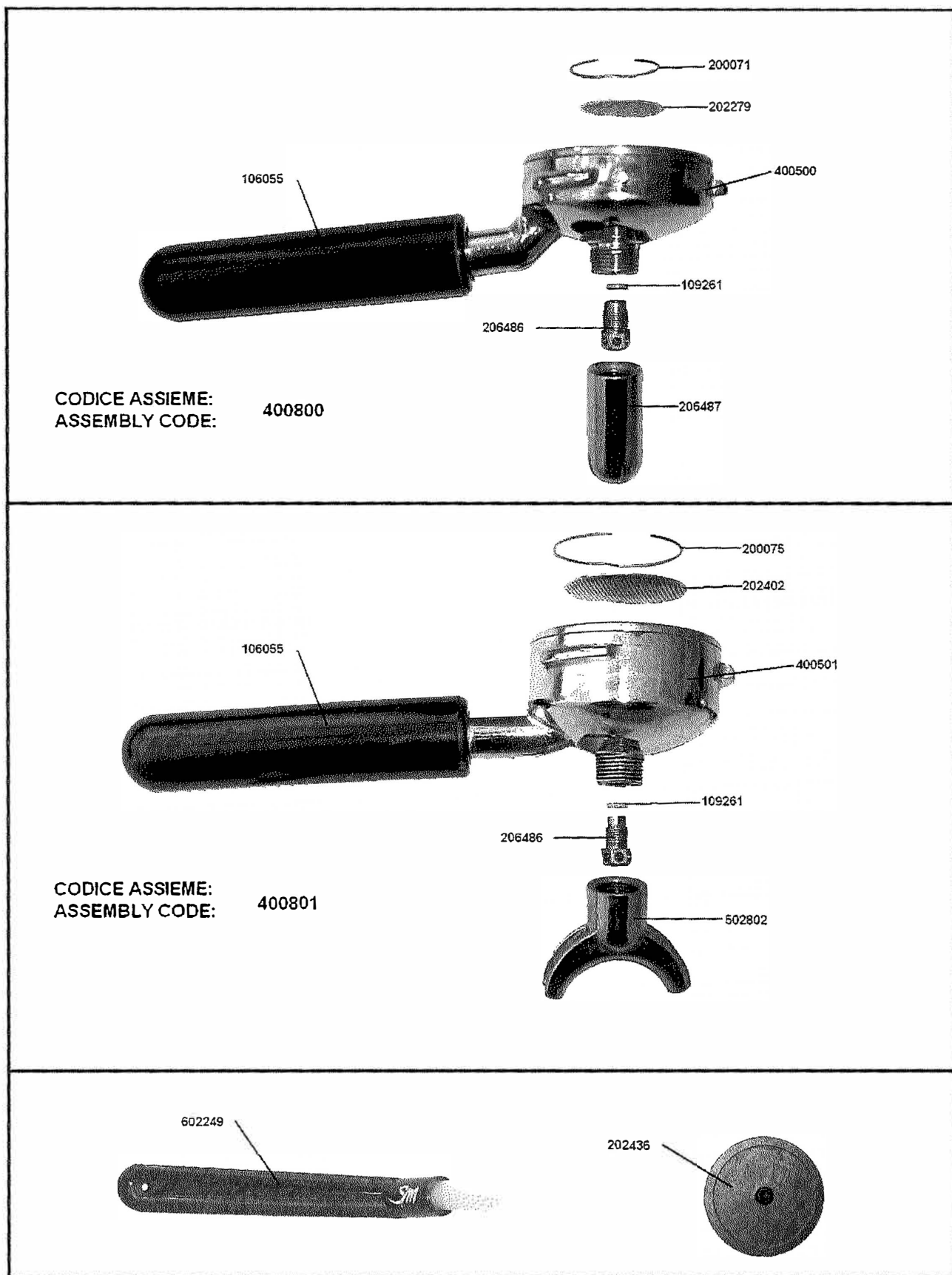


* SOLO PER MACCHINA CON AUTOLIVELLO
 * FOR MACHINE WITH AUTOFILL ONLY



Spare parts for "85 RANGE FLEXA-E MODEL"

Section: Outfit





Spare parts for "85 RANGE FLEXA-E MODEL"

Section: Components ETL/110

