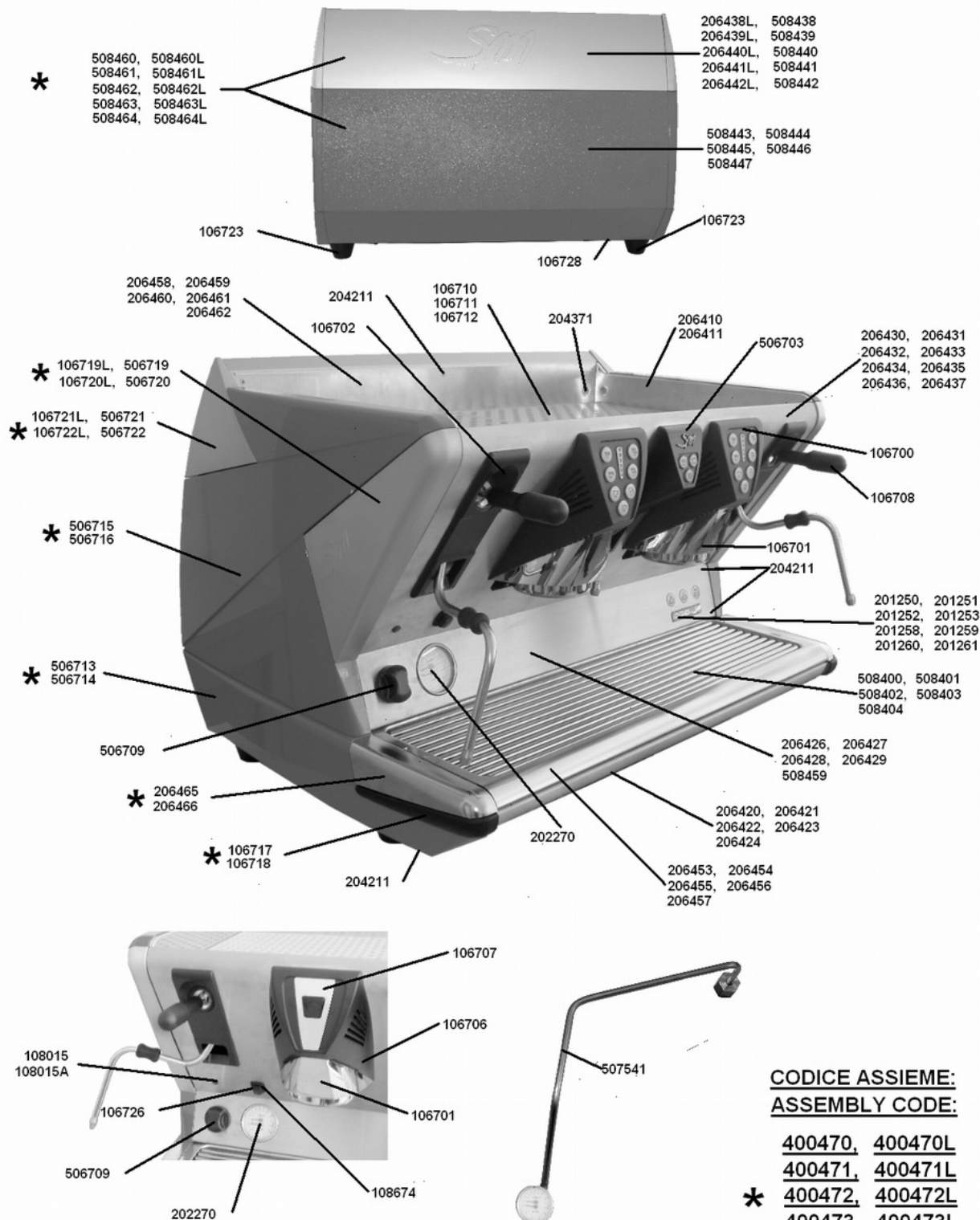




## Spare parts for "100 S/E RANGE"

### Section: Structure and panels



Part Number	Description	
106700	Group cover - automatic	
106701	Group cover - chrome	
106702	Manual steam plastic covering	
106706	Group cover - manual	
106707	Chrome covering - manual	
106708	Steam/water handle SM100	
106710	Grid Practical/2 gr. SM100	
106711	Grid Sprint/4 gr. SM100	
106712	Grid 3 gr. SM100	
106717	Right buffer SM100	
106718	Left buffer SM100	
106719L	Right chrome triangular panel w/logo	
106720L	Left chrome triangular panel w/logo	
106721L	Right satined chrome triangular panel	
106722L	Left chrome triangular panel	
106723	Rubber foot SM100	
106726	Cupswarmer switch plug	
106728	M4 screw protection bush	
108015	Warning light PVC 230V	
108015A	Warning light 110-250V UL	
108674	Cupswarmer switch SM100	
201250	Plate Sprint 100 S	
201251	Plate Sprint 100 E	
201252	Plate 100 S	
201253	Plate 100 E	
201258	Plate Practical 100 S	
201259	Plate Practical 100 E	
201260	Plate 100 S DTC	
201261	Plate 100 E DTC	
202270	Manometer 3-25 bar SM100	
204211	Stainless steel screw TSP M4x10	
204371	Stainless steel screw TSP 4x10 (+)	
206410	Right lateral plate/panel SM100	
206411	Left lateral plate/panel SM100	
206420	Bottom front side panel Practical SM100	
206421	Bottom front side panel Sprint SM100	
206422	Bottom front side panel 2 gr. SM100	
206423	Bottom front side panel 3 gr. SM100	
206424	Bottom front side panel 4 gr. SM100	

206426	Medium front side panel Sprint SM100
206427	Medium front side panel 2 gr. SM100
206428	Medium front side panel 3 gr. SM100
206429	Medium front side panel 4 gr. SM100
206430	Top front side panel Practical SM100 S/E
206431	Top front side panel Sprint SM100 S/E
206432	Top front side panel 2 gr. E SM100
206433	Top front side panel 3 gr. E SM100
206434	Top front side panel 4 gr. E SM100
206435	Top front side panel 2 gr. S SM100
206436	Top front side panel 3 gr. S SM100
206437	Top front side panel 4 gr. S SM100
206438L	Top rear panel Practical SM100
206439L	Top rear panel Sprint SM100
206440L	Top rear panel 2 gr. SM100
206441L	Top rear panel 3 gr. SM100
206442L	Top rear panel 4 gr. SM100
206453	Bottom tray Practical SM100
206454	Bottom tray Sprint SM100
206455	Bottom tray 2 gr. SM100
206456	Bottom tray 3 gr. SM100
206457	Bottom tray 4 gr. SM100
206458	Upper tray Practical SM100
206459	Upper tray Sprint SM100
206460	Upper tray 2 gr. SM100
206461	Upper tray 3 gr. SM100
206462	Upper tray 4 gr. SM100
206465	Right grid-edge SM100
206466	Left grid-edge SM100
400470	Complete satinized machine body 100/Practical
400470L	Complete polished machine body 100/Practical
400471	Complete satinized machine body 100/Sprint
400471L	Complete polished machine body 100/Sprint
400472	Complete satinized machine body 100/2 gr.
400472L	Complete polished machine body 100/2 gr.
400473	Complete satinized machine body 100/3 gr.
400473L	Complete polished machine body 100/3 gr.
400474	Complete satinized machine body 100/4 gr.
400474L	Complete polished machine body 100/4 gr.
506703	Serigraph water delivery plastic covering
506709	Serigraph main switch handle SM100

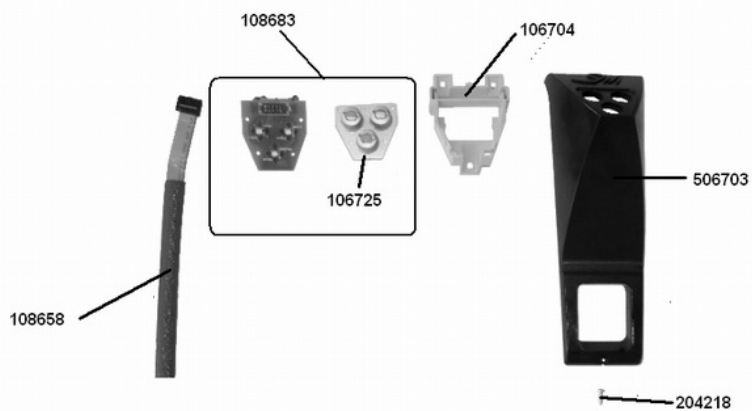
506713	Painted bottom lateral panel-right SM100	
506714	Painted bottom lateral panel-left SM100	
506715	Painted top lateral panel-right SM100	
506716	Painted top lateral panel-left SM100	
506719	Right satined chrome triangular panel w/logo	
506720	Left satined chrome triangular panel w/logo	
506721	Right satined chrome triangular panel	
506722	Left satined chrome triangular panel	
507541	Tube manometer/boiler 2/3/4 gr. SM100	
508400	Bottom grid - Practical SM100	
508401	Bottom grid - Sprint SM100	
508402	Bottom grid - 2 gr. SM100	
508403	Bottom grid - 3 gr. SM100	
508404	Bottom grid - 4 gr. SM100	
508438	Top rear panel Practical SM100 satinized	
508439	Top rear panel Sprint SM100 satinized	
508440	Top rear panel - 2 gr. SM100 satinized	
508441	Top rear panel - 3 gr. SM100 satinized	
508442	Top rear panel - 4 gr. SM100 satinized	
508443	Bottom rear panel Practical SM100	
508444	Bottom rear panel Sprint SM100	
508445	Bottom rear panel 2 gr. SM100	
508446	Bottom rear panel 3 gr. SM100	
508447	Bottom rear panel 4 gr. SM100	
508459	Medium front side panel Practical SM100	
508460	Complete satinized rear panel Practical 100	
508460L	Complete polished rear panel Practical 100	
508461	Complete satinized rear panel Sprint 100	
508461L	Complete polished rear panel Sprint 100	
508462	Complete satinized rear panel 2 gr. 100	
508462L	Complete polished rear panel 2 gr. 100	
508463	Complete satinized rear panel 3 gr. 100	
508463L	Complete polished rear panel 3 gr. 100	
508464	Complete satinized rear panel 4 gr. 100	
508464L	Complete polished rear panel 4 gr. 100	



## Spare parts for "100 S/E RANGE"

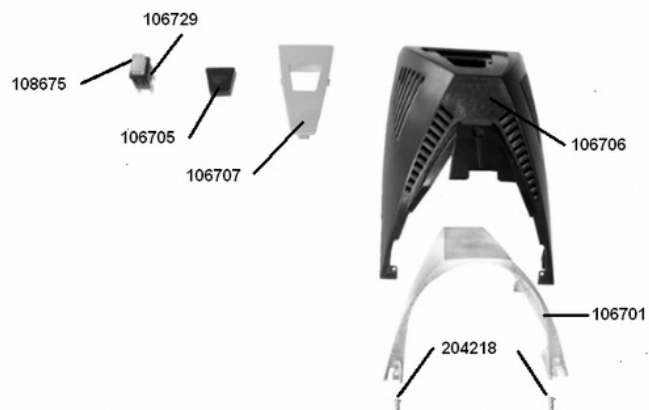
### Section: Deliveries and level control

## ACQUA

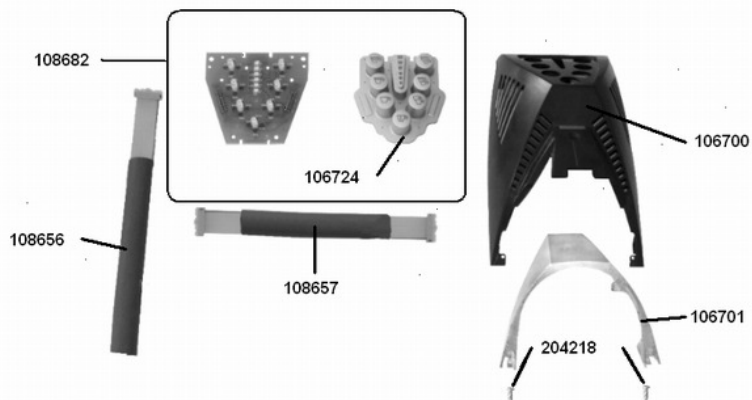


## WATER

## MOD. "S"

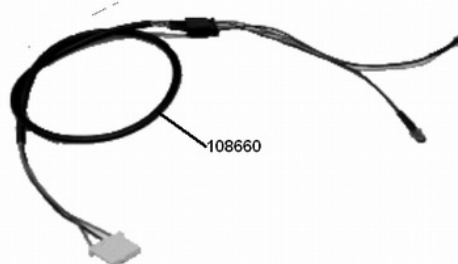
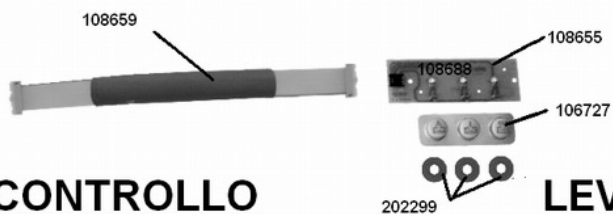


## MOD. "E"



## CONTROLLO LIVELLO

## LEVEL CONTROL



Part Number	Description	
106700	Group cover - automatic	
106701	Group cover - chrome	
106704	Water keyboard support	
106705	Delivery switch plug	
106706	Group cover - Manual	
106707	Manual chrome covering	
106724	Silicon keyboard	
106725	Water silicon keyboard	
106727	Cover for level indicator 100	
106729	Deliveries switch protection SM100 S	
108655	Electronic level control 100 2/3/4 gr.	
108656	Triggerbox-deliveries keyboard cable 100	
108657	Keyboard-keyboard cable 100	
108658	Triggerbox-water keyboard cable 100	
108659	Triggerbox-level control cable 100 Sprint/2 gr.	
108660	Cabling Led 100 Practical	
108675	Delivery switch 100 "S"	
108682	Complete deliveries keyboard 100 "E"	
108683	Complete water keyboard 100 "E"	
108688	Triggerbox-level control cable 100 3/4 gr.	
202299	Plastic washer 20x6,3x1	
204218	Self-tapping screw TC (+) 2,2x9,5 7981-galvanized	
506703	Serigraph water delivery plastic covering	





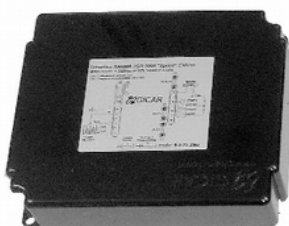
## Spare parts for "100 S/E RANGE"

### Section: Electronic controls

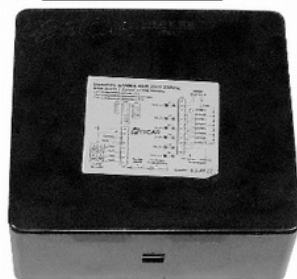
## PRACTICAL "E"

## SPRINT/ 2/3/4 GR.

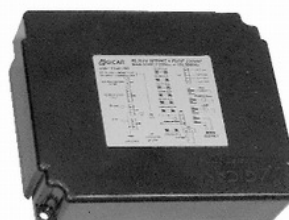
## MOD."S"



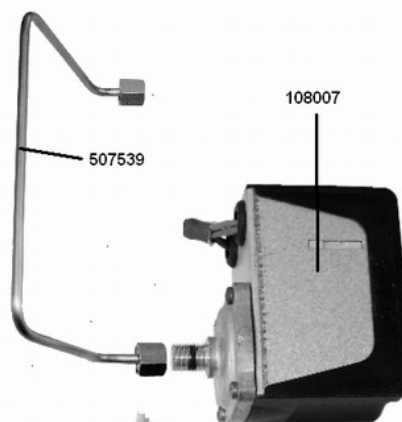
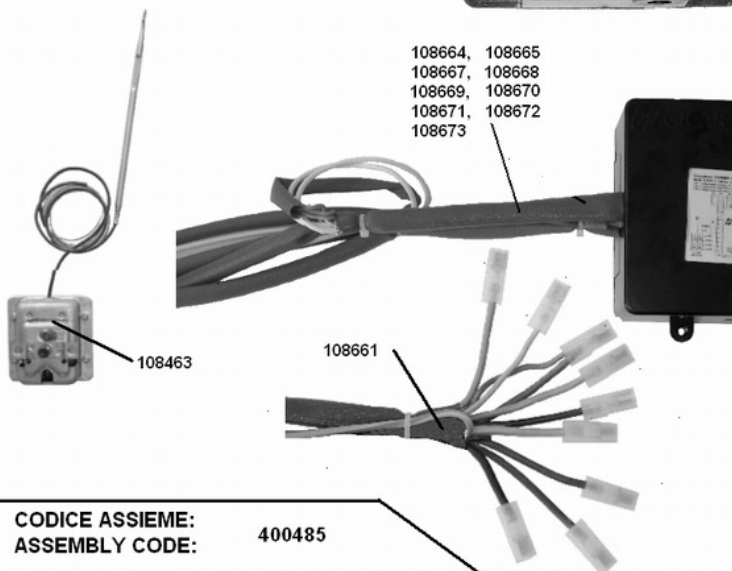
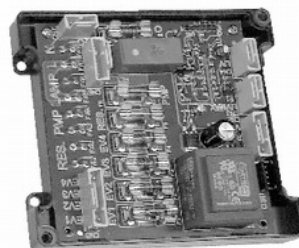
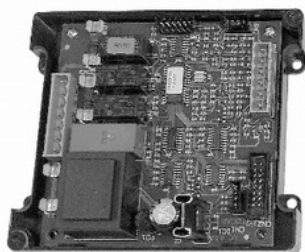
108651



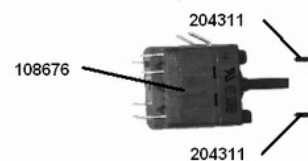
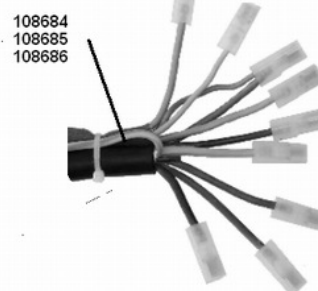
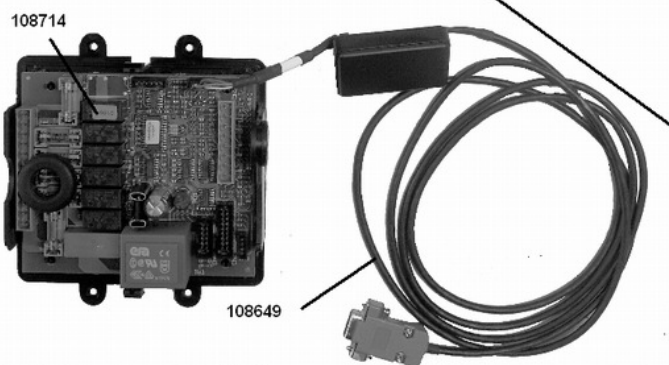
108652



108650



**CODICE ASSIEME:**  
**ASSEMBLY CODE:** 400485

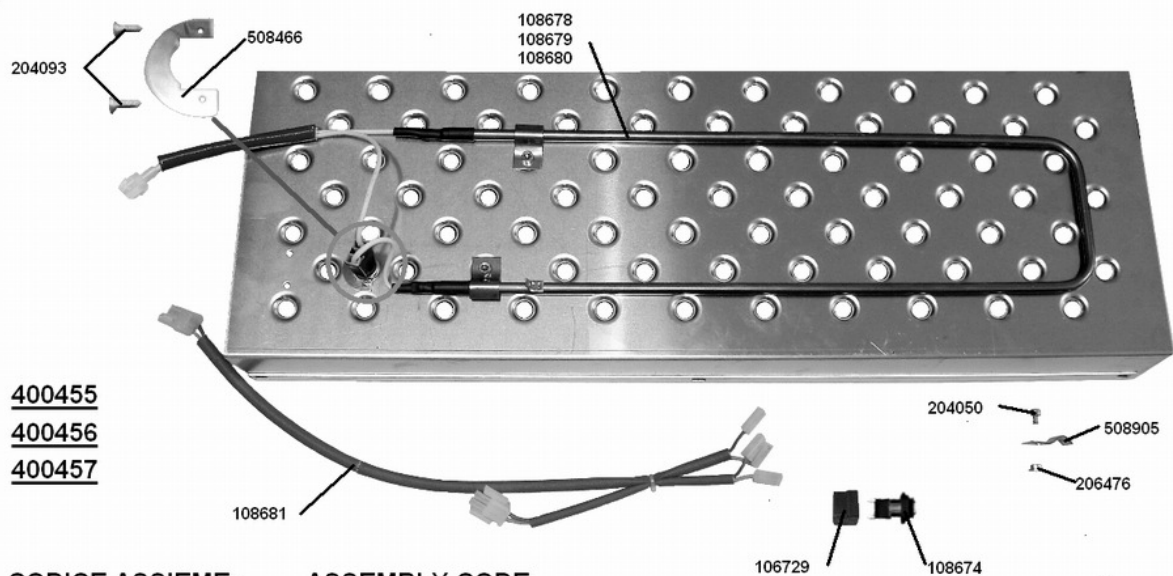


Part Number	Description
108007	Pressure switch
108463	Thermostat EGO-5532532020
108649	Interface cable Model 100
108650	Triggerbox 100 "S"
108651	Triggerbox 100 Practical "E"
108652	Triggerbox 100 Sprint/2/3/4 gr "E"
108661	Grounding cabling 100
108664	Cabling Practical 100 "S"
108665	Cabling Sprint/2 gr. 100 "S"
108667	Cabling 3 gr. 100 "S"
108668	Cabling 4 gr. 100 "S"
108669	Cabling Practical 100 "E"
108670	Cabling Sprint 100 "E"
108671	Cabling 2 gr. 100 "E"
108672	Cabling 3 gr. 100 "E"
108673	Cabling 4 gr. 100 "E"
108676	Main switch 100 Practical/Sprint/2/3/4 gr.
108684	Main switch cabling Practical 100
108685	Main switch cabling Sprint 100 monophas
108686	Main switch cabling Sprint/2/3/4 gr. 100
108714	Trigger box for remote control cash unit via RS232
204311	Screw 3,5x6,4 6954-71 zinc-plated
400485	Remote control cash uni via RS232 for SM100
507539	Tube-pressure regulator/boiler 2/3/4 gr. 100



## Spare parts for "100 S/E RANGE"

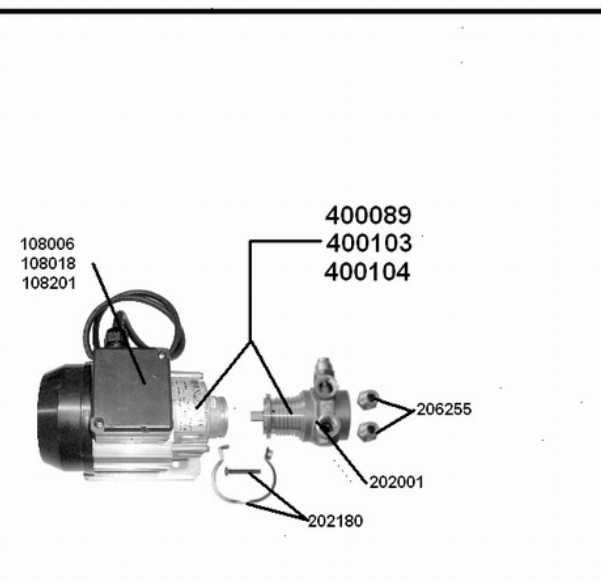
### Section: Electric and hydraulic components



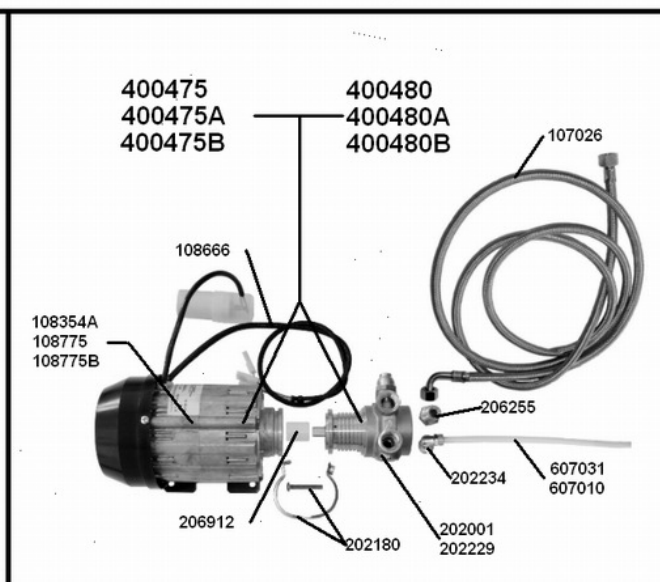
400455  
400456  
400457

CODICE ASSIEME:

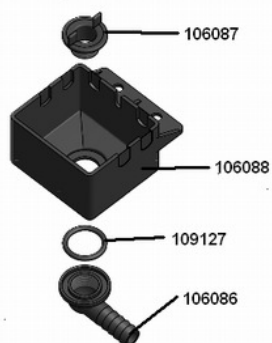
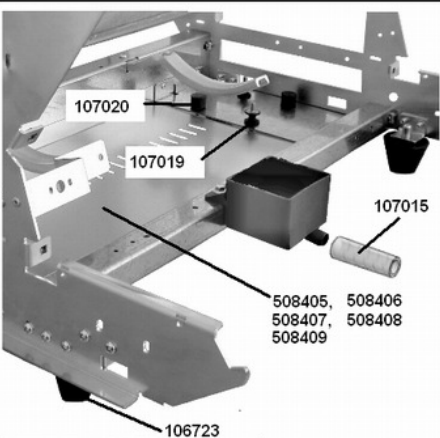
ASSEMBLY CODE:



**MOTORE ESTERNO- EXTERNAL MOTOR**



**MOTORE INTERNO- INTERNAL MOTOR**



**ASSEMBLY CODE:**  
**CODICE ASSIEME:** 400486



Part Number	Description
106086	Hose fitting
106087	Connection
106088	Drain cup 90°
106483	Unit drainage conveyor
106490	Drainage tray 100
106723	Rubber foot SM100
106729	Deliveries switch protection SM 100 S
107015	Exhaust rubber hose 14x20 (in meters)
107019	Antivibrating 20x15
107020	Cylindric-shaped antivibrating 20x15
107026	Stainless steel plaited rubber hose 3/8"+3/8"F 90°
107034	Silicone pipe 7x12 (x meter)
108006	Motor for pump 240 V
108018	Motor for pump 110 V
108201	External motor 230 V
108354A	Inner pump motor 110V
108666	Pump cable SM100
108674	Cup warmer switch SM100
108678	Heating element-cup warmer 2 gr. 100
108679	Heating element-cup warmer 3 gr. 100
108680	Heating element-cup warmer 4 gr. 100
108681	Cabling-cup warmer 100
108775	Inner motor pump 230V
108775B	(Joint) inner motor 240V
109127	Gasket OR 134 drain cup 90°
202001	Volumetric pump
202180	Hose clamp-motor
202229	Volumetric pump 50 Lt.
202234	Junction 1500 3/8"-6/4"
202405	Clamp
204050	Stainless steel screw 5x6 TCCE
204093	Self-tapping screw 4X3/8" KV (+) 7982 nichel-plated
206255	Nipple (for pump)
206476	Fixing bush heat element-cup warmer SM100
206912	Joint for motor pump
400089	Pump + motor 230 V - complete
400103	Pump + motor 110 V - complete
400104	Pump + motor 240 V - complete
400455	Complete cup warmer kit 100 2 gr.

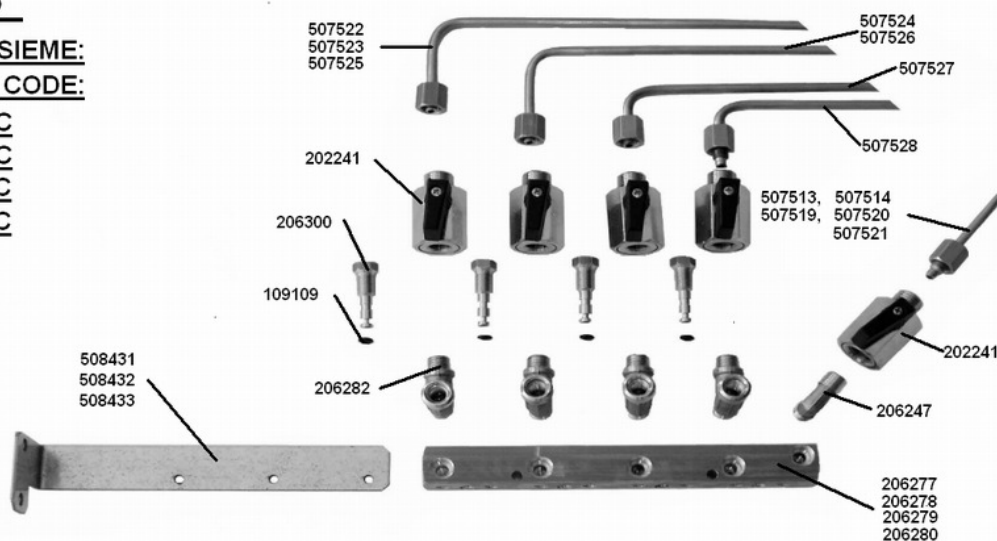
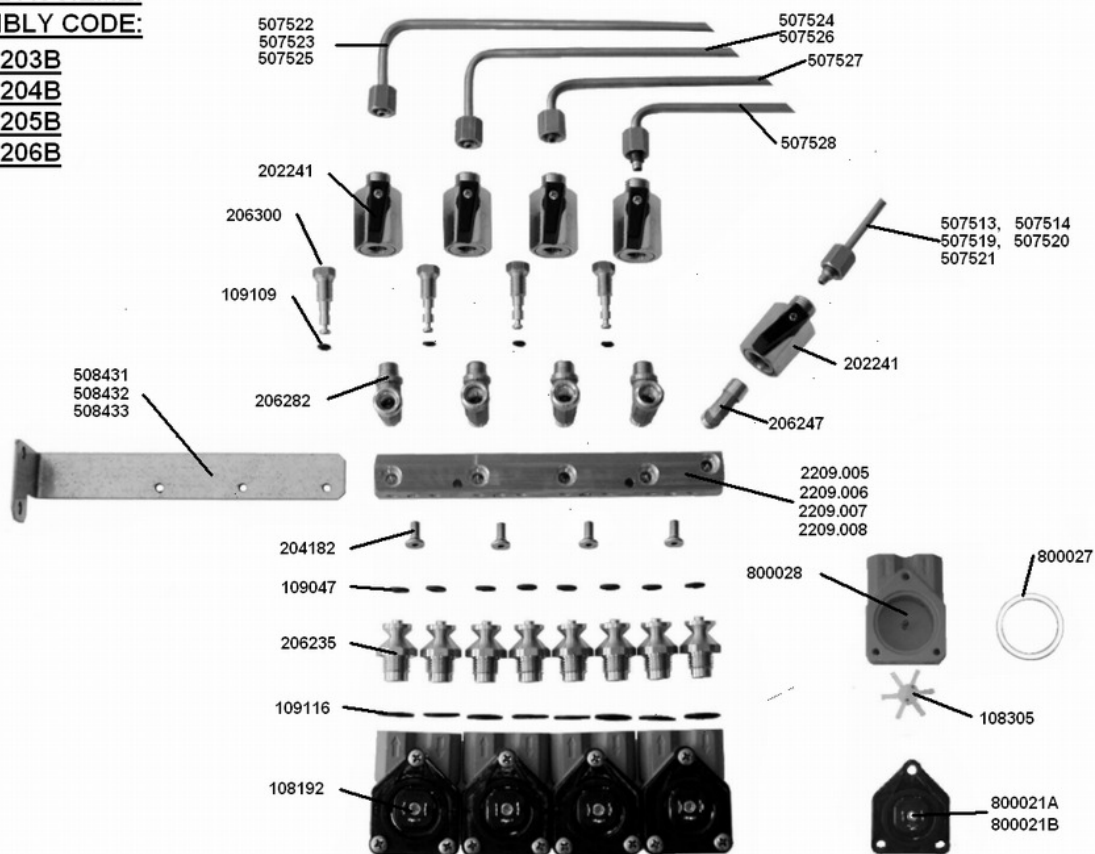
400456	Complete cup warmer kit 100 3 gr.	
400457	Complete cup warmer kit 100 4 gr.	
400475	Motor+pump 100 Practical 230 V	
400475A	Motor+pump 100 Practical 110 V	
400475B	Motor+pump 100 Practical 240 V	
400480	Motor+pump 100 Sprint/2/3/4 gr. 230 V	
400480A	Motor+pump 100 Sprint/2/3/4 gr. 110 V	
400480B	Motor+pump 100 Sprint/2/3/4 gr. 240 V	
400486	Drain kit	
508405	Protection frame Practical SM100	
508406	Protection frame Sprint SM100	
508407	Protection frame 2 gr. SM100	
508408	Protection frame 3 gr. SM100	
508409	Protection frame 4 gr. SM100	
508466	Cup warmer thermostat support 100	
508905	Cup warmer support	
607010	Tail pipe pump x Practical	
607031	Pipe pump-block SM100	



## Spare parts for "100 S/E RANGE"

### Section: Hydraulic systems Mod. "S/E"



**MOD."S"****CODICE ASSIEME:****ASSEMBLY CODE:**608203C608204C608205C608206C**MOD."E"****CODICE ASSIEME:****ASSEMBLY CODE:**608203B608204B608205B608206B

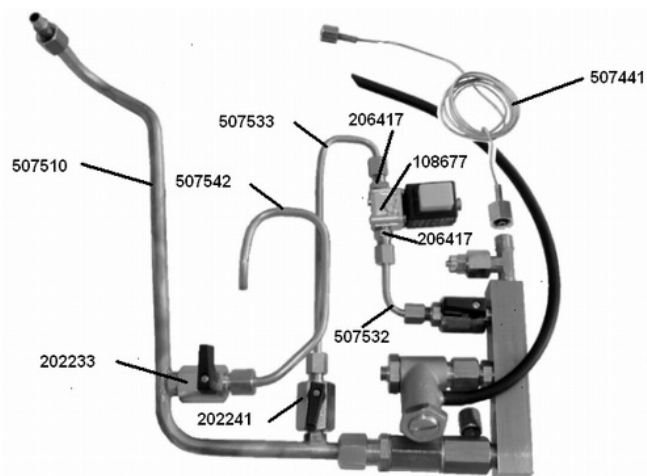
Part Number	Description
108192	Flow meter
108305	Impeller for flow meter
109047	OR gasket 02025
109109	Mixer pin OR gasket
109116	Flow meter junction OR gasket
202241	1/8"M/F Unit 5,2mm hole + 45° broken
204182	Stainless steel screw 5x12 TPSCE
206235	Flow meter junction "new"
206247	"L" Junction
206277	Water distributor Practical
206278	Water distributor 2 gr.
206279	Water distributor 3 gr.
206280	Water distributor 4 gr.
206282	"T" Junction for gicleur
206300	Gicleur 0,7 + filter
2209.005	Flow meter distributor Practical
2209.006	Flow meter distributor 2 gr.
2209.007	Flow meter distributor 3 gr.
2209.008	Flow meter distributor 4 gr.
507513	Valves-flow meter pipe Practical 100
507514	Valves-flow meter pipe Sprint 100
507519	Valves-flow meter pipe 2 gr. 100
507520	Valves-flow meter pipe 3 gr. 100
507521	Valves-flow meter pipe 4 gr. 100
507522	Flow meter-injector pipe Practical 100
507523	1st flow meter-1st injector pipe Sprint 100
507524	2nd flow meter-2nd injector pipe Sprint 100
507525	1st flow meter-1st injector pipe 2/3/4 gr. 100
507526	2nd flow meter-2nd injector pipe 2/3/4 gr. 100
507527	3rd flow meter-3rd injector pipe 2/3/4 gr. 100
507528	4th flow meter-4th injector pipe 2/3/4 gr. 100
508431	Flow meter support Sprint/2 gr 100
508432	Flow meter support 3/4 gr 100
508433	Flow meter support Practical 100
608203B	Flow meter unit Practical 100 E
608203C	Distribution unit Practical 100 S
608204B	Flow meter unit Sprint/2 gr. 100 E
608204C	Distribution unit Sprint/2 gr. 100 S
608205B	Flow meter unit 3 gr. 100 E

608205C	Distribution unit 3 gr. 100 S
608206B	Flow meter unit 4 gr. 100 E
608206C	Distribution unit 4 gr. 100 S
800021A	Flow meter guard
800021B	Flow meter Verton guard
800027	Flow meter OR gasket
800028	Flow meter casing

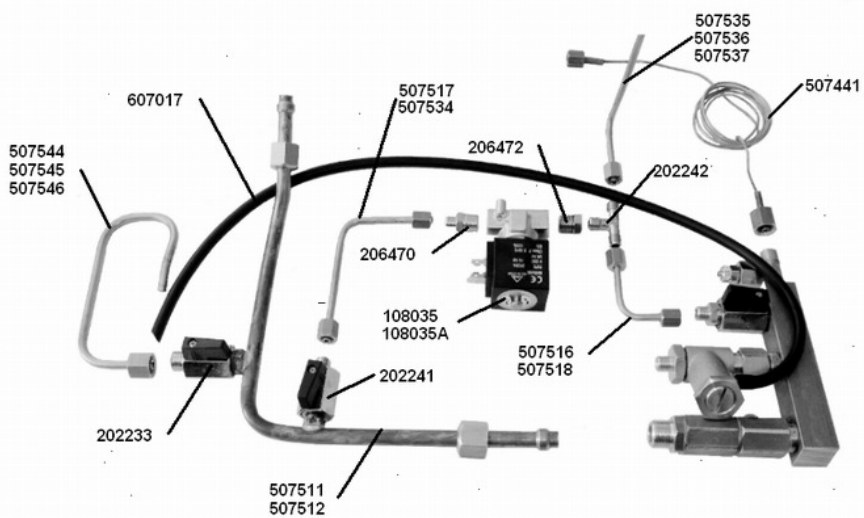


## Spare parts for "100 S/E RANGE"

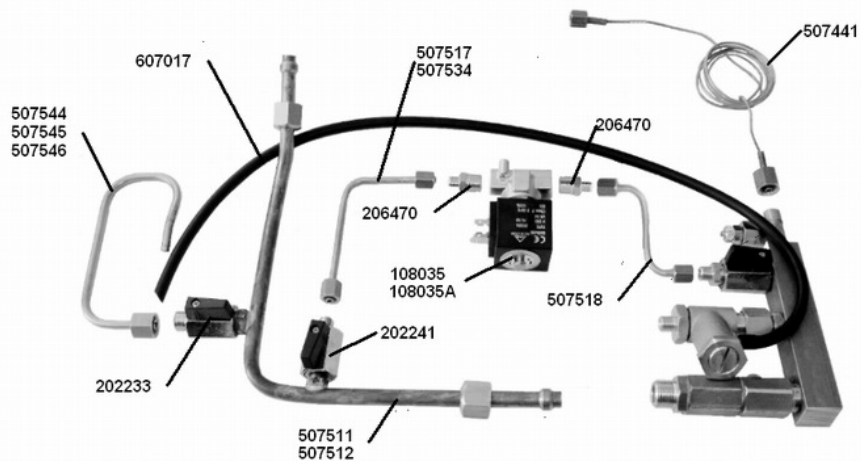
**Section: Autofill-exhaust system Mod.PracticalSprint/2/3/4 gr.**



MOD. PRACTICAL



MOD. SPRINT/2/3/4 GR. "E"



MOD. SPRINT/2/3/4 GR. "S"

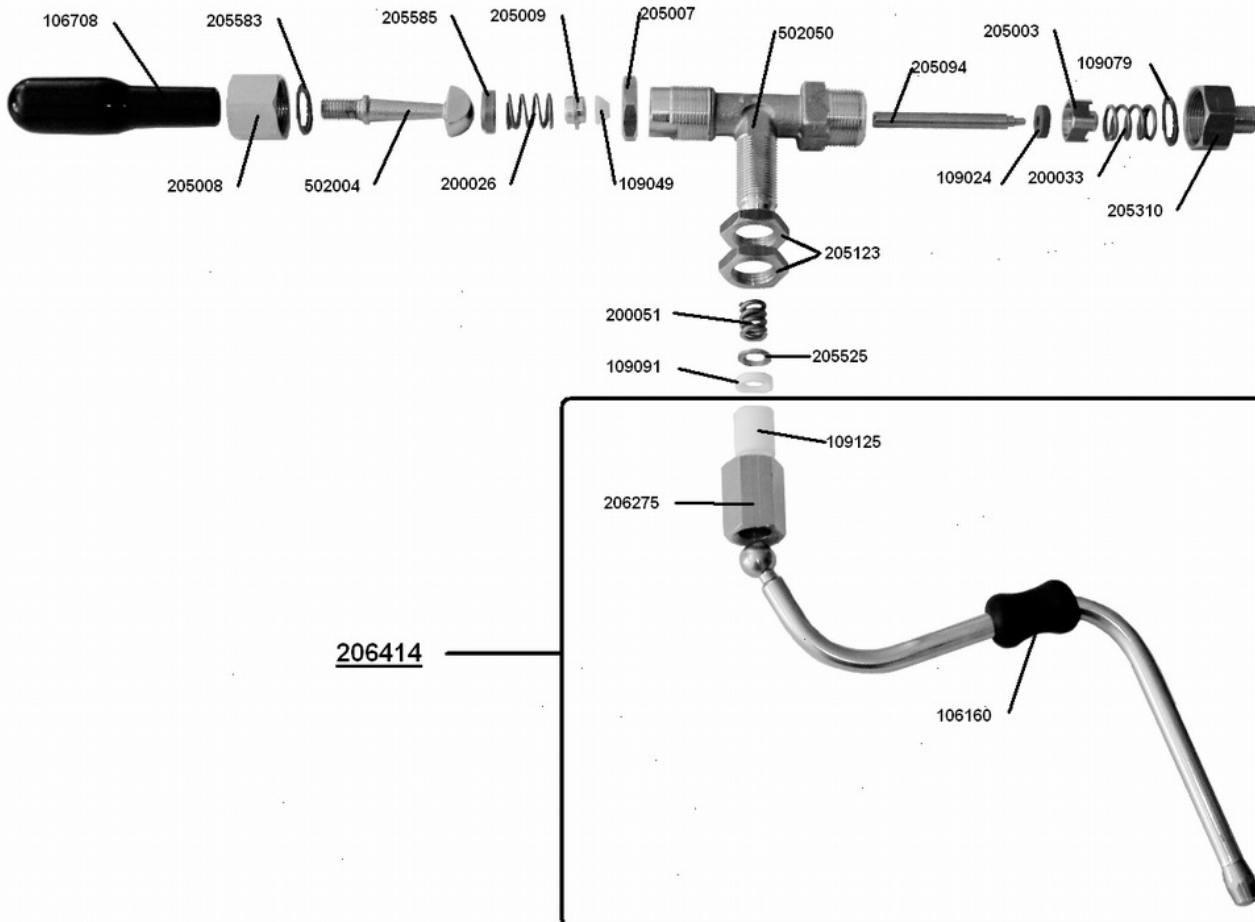
Part Number	Description	
108035	2 way autofill electrovalve 230V	
108035A	2 way autofill electrovalve 115/120 V 60Hz	
108677	2 way autofill electrovalve 1/8" Ø=2,3 230 V	
202233	1/4"M/F Unit 6,2mm hole + 45° broken	
202241	1/8"M/F Unit 5,2mm hole + 45° broken	
202242	"T" connection 1/8"-1/8"1/8"	
206417	Nipple 1/8"x1/8" 100	
206470	Nipple 1/4"x1/8" 100	
206472	Gicleur for autofill electrovalve 100	
507441	Copper capillary pipe	
507510	Supply pipe Practical 100	
507511	Supply pipe Sprint 100	
507512	Supply pipe 2/3/4 gr. 100	
507516	Autofill inlet pipe 2/3/4 gr. 100 E	
507517	Autofill outlet pipe 2/3/4 gr. 100 E	
507518	Autofill inlet pipe 2/3/4 gr. S-Sprint S/E 100	
507532	Autofill inlet pipe Practical 100	
507533	Autofill outlet pipe Practical 100	
507534	Autofill outlet pipe Sprint 100	
507535	Mixer autofill pipe 2 gr. 100 E	
507536	Mixer autofill pipe 3 gr. 100 E	
507537	Mixer autofill pipe 4 gr. 100 E	
507542	Exhaust pipe Practical100	
507544	Exhaust pipe Sprint/2 gr.100	
507545	Exhaust pipe 3 gr.100	
507546	Exhaust pipe 4 gr.100	
607017	Exhaust valve pipe	



## Spare parts for "100 S/E RANGE"

### Section: Steam unit/valve SM100

CODICE ASSIEME: 400450  
ASSEMBLY CODE:



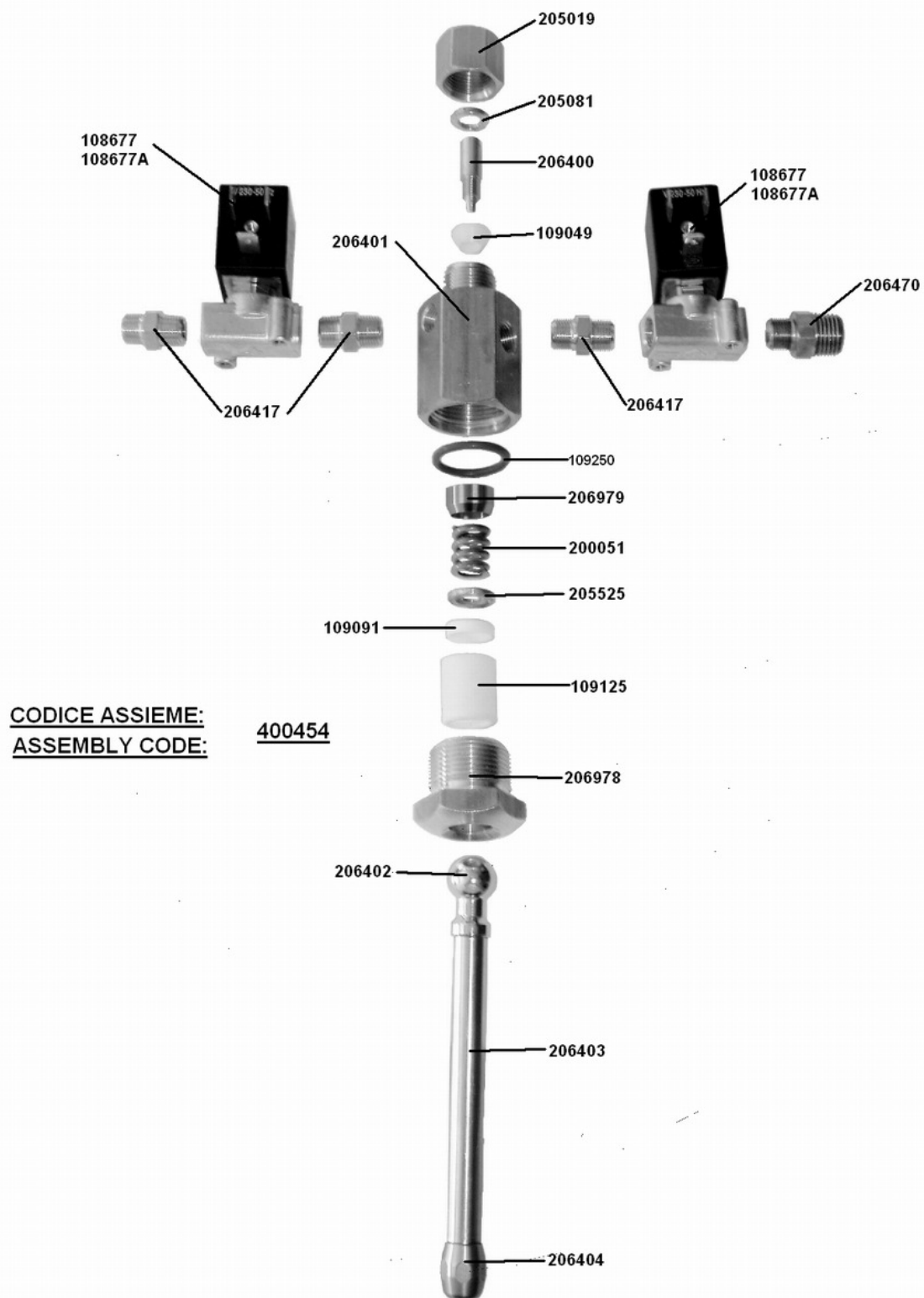


Part Number	Description
106160	Anti-burns sleeve
106708	Steam/water handle SM100
109024	Steam-maker's gasket
109049	Supply water/steam-maker's gasket
109079	Steam-maker's gasket
109091	Articulated steam-maker's gasket
109125	Steam joint sleeve
200026	Steam unit spring
200033	Steam unit spring
200051	Button spring
205003	Gasket-holder piston
205007	Steam-maker's fixing nut
205008	Steam-maker's nut
205009	Gasket-clamp ring
205094	Stainless steel stem steam/button
205123	Steam nut/check valve
205310	Steam-maker's junction
205525	Steam-maker's washer
205583	Shaped washer for steam-maker
205585	Cup for steam-maker
206275	Nylon sleeve + nut
206414	Steam pipe SM100
400450	Complete steam unit SM100
502004	Steam-maker control lever
502050	Steam-maker's casing



## Spare parts for "100 S/E RANGE"

### Section: Mixer water unit/valve 2/3/4 gr Mod. "E"



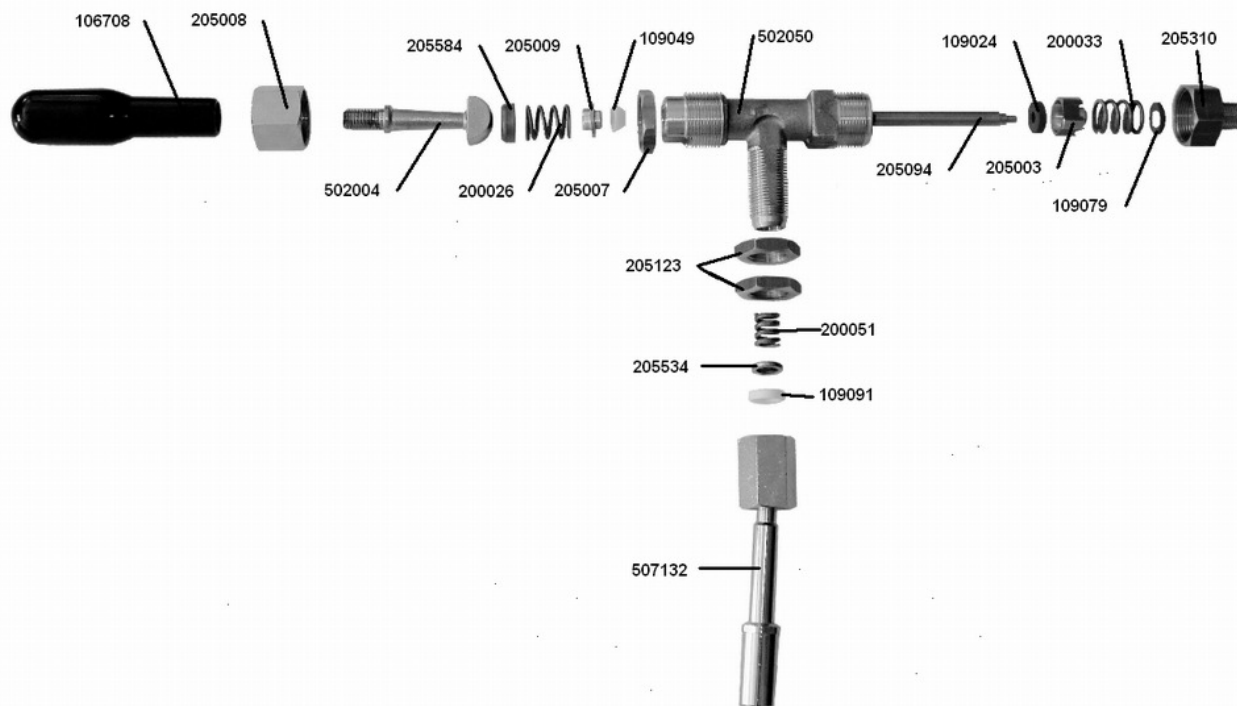
Part Number	Description	
108677	2 way electrovalve 230V 1/8" Ø=2,3	
108677A	2 way electrovalve 110V 1/8" Ø=2,3	
109049	OR 3075 gasket	
109091	Supply water/steam gasket	
109125	Articulated steam-maker's gasket	
109250	Steam joint sleeve	
200051	Button spring	
205019	Nut 3/8" gas hole Ø 8	
205081	Lever group washer	
205525	Steam-maker washer	
206400	Water needle SM100	
206401	Water mixer block SM100	
206402	Water joint SM100	
206403	Water SS pipe SM100	
206404	Water nozzle SM100	
206417	Nipple 1/8"x1/8" SM100	
206470	Nipple 1/8"x1/8" SM100	
206978	Steam pipe support nut	
206979	Seal cone	
400454	Complete water unit 2/3/4 gr 100 "E"	



## Spare parts for "100 S/E RANGE"

**Section: Water unit/valve Practical/Sprint/2/3/4 gr Mod. "S"**

CODICE ASSIEME:     400451  
ASSEMBLY CODE:



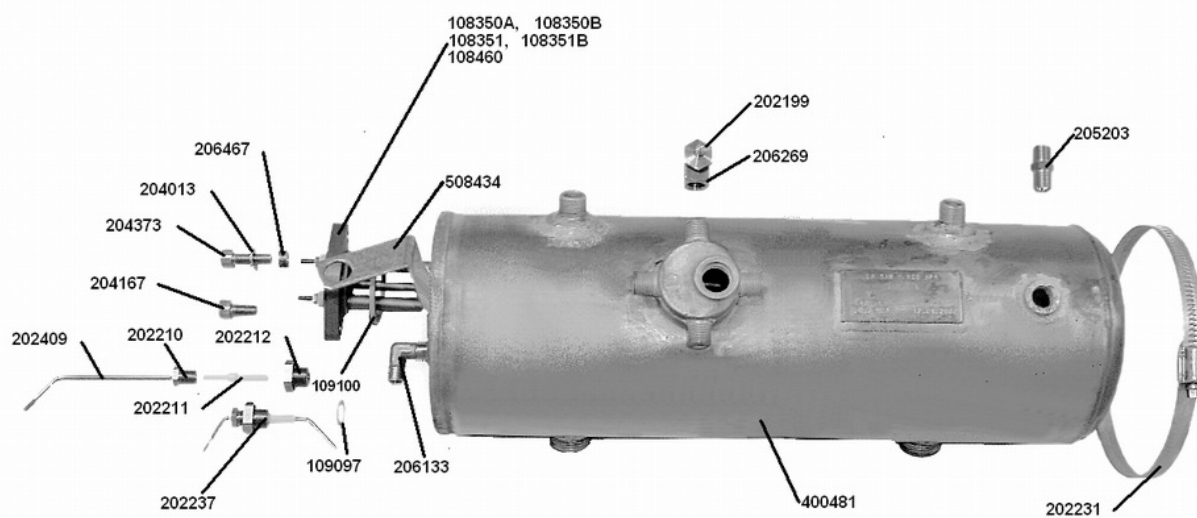
Part Number	Description	
106708	Steam/water handle SM100	
109024	Steam-maker's gasket	
109049	Supply water/steam gasket	
109079	Steam-maker's gasket	
109091	Articulated steam-maker's gasket	
200026	Steam unit spring	
200033	Steam unit spring	
200051	Button spring	
205003	Gasket-holder piston	
205007	Steam-maker's fixing nut	
205008	Steam-maker's nut	
205009	Gasket-clamp ring	
205094	Stainless steel stem steam/button	
205123	Steam nut/check valve	
205310	Steam-maker's junction	
205534	Water unit junction	
205584	Plain washer for steam-maker	
400451	Complete water unit 100 Practical/Sprint/2/3/4 gr. "S"	
502004	Steam-maker control lever	
502050	Steam-maker's casing	
507132	Joint water pipe	



## Spare parts for "100 S/E RANGE"

### Section: Boiler Mod. Sprint





Part Number	Description	
108350A	Heat element Sprint 3000 W 110 V	
108350B	Heat element Sprint 3000 W 240 V	
108351	Heat element Sprint 4500 W 230/400 V	
108351B	Heat element Sprint 4500 W 240 V	
108460	Heat element Sprint 3000 W 230 V	
109097	Seal-level probe	
109100	Seal-flange Practical/Sprint	
202199	Vacuum valve	
202210	Wad pusher TL 10	
202211	Teflon insulator TI 10	
202212	Connection TL 10	
202231	Hose clamp-boiler Sprint	
202237	Autofill probe	
202409	Autofill probe 100	
204013	External indented zinc-plated washer Ø 8	
204167	Stainless steel screw 8x16 TCCE	
204373	Stainless steel screw 8x25 TCCE	
205203	Nipple 1/4"X1/4" hole Ø 8	
206133	"L" connection for Practical/Sprint	
206269	Vacuum valve connection	
206467	Bush-heat element Practical/Sprint 100	
400481	Boiler body Sprint 100	
508434	Support pressure regulator Sprint 100	



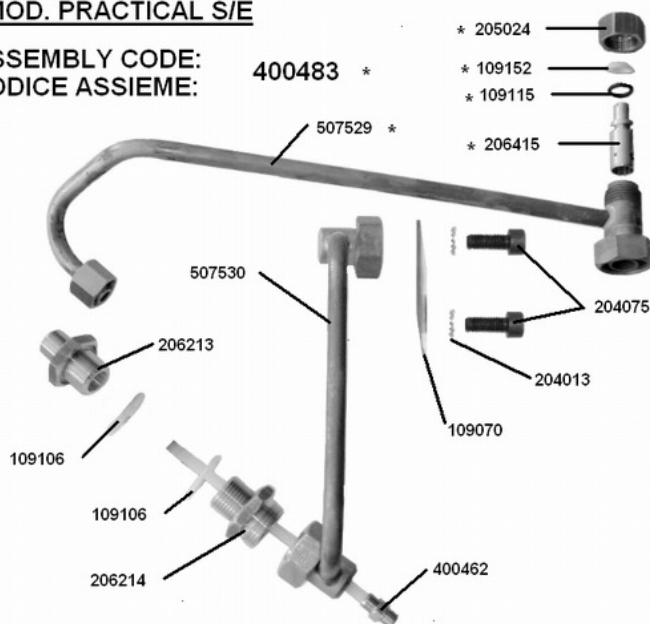
## Spare parts for "100 S/E RANGE"

**Section: Circulation and unit Mod. Practical/Sprint/2/3/4 gr.**

**MOD. PRACTICAL S/E**

ASSEMBLY CODE:  
CODICE ASSIEME:

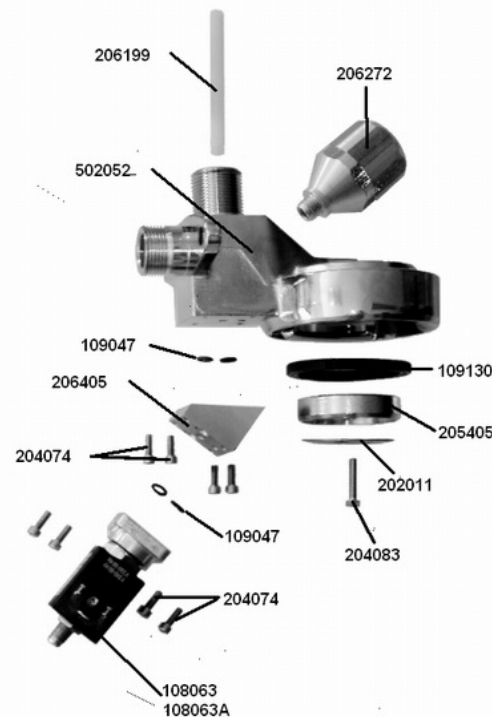
400483 \*



**PER TUTTI I MODELLI  
FOR ALL MODELS**

CODICE ASSIEME:  
ASSEMBLY CODE:

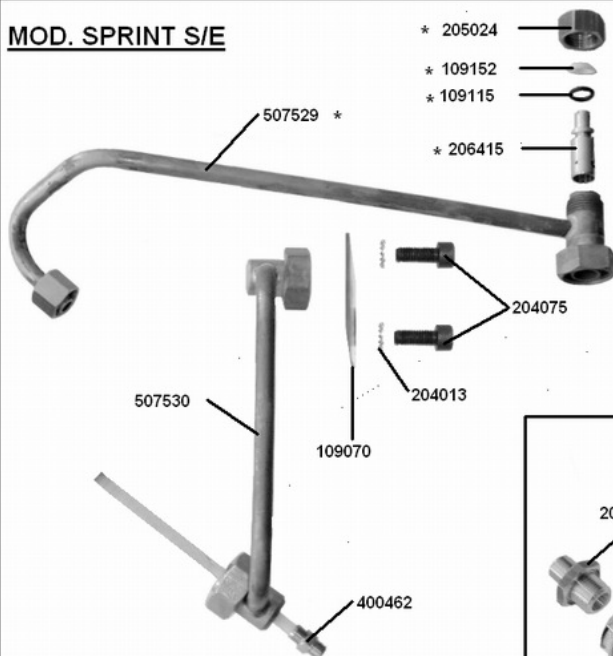
400453



**MOD. SPRINT S/E**

ASSEMBLY CODE:  
CODICE ASSIEME:

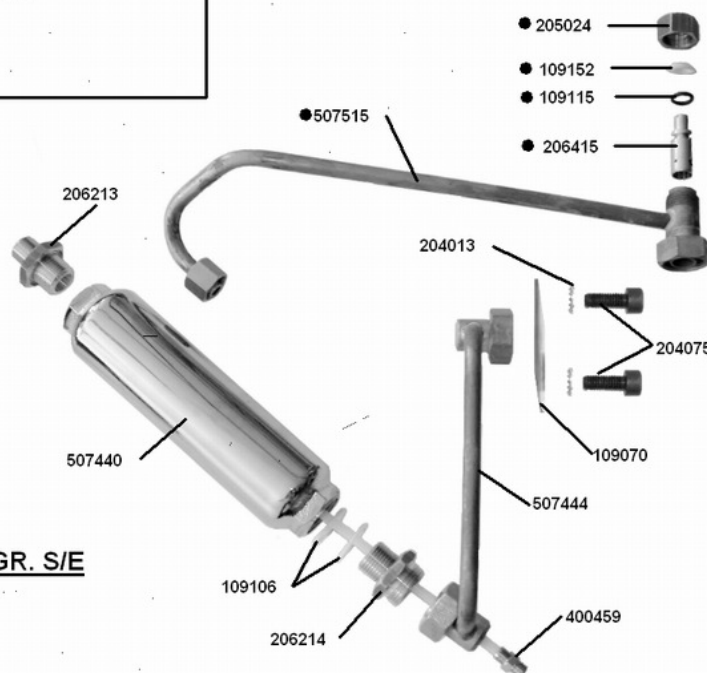
400483 \*



**MOD. 2/3/4 GR. S/E**

ASSEMBLY CODE:  
CODICE ASSIEME:

400484 •

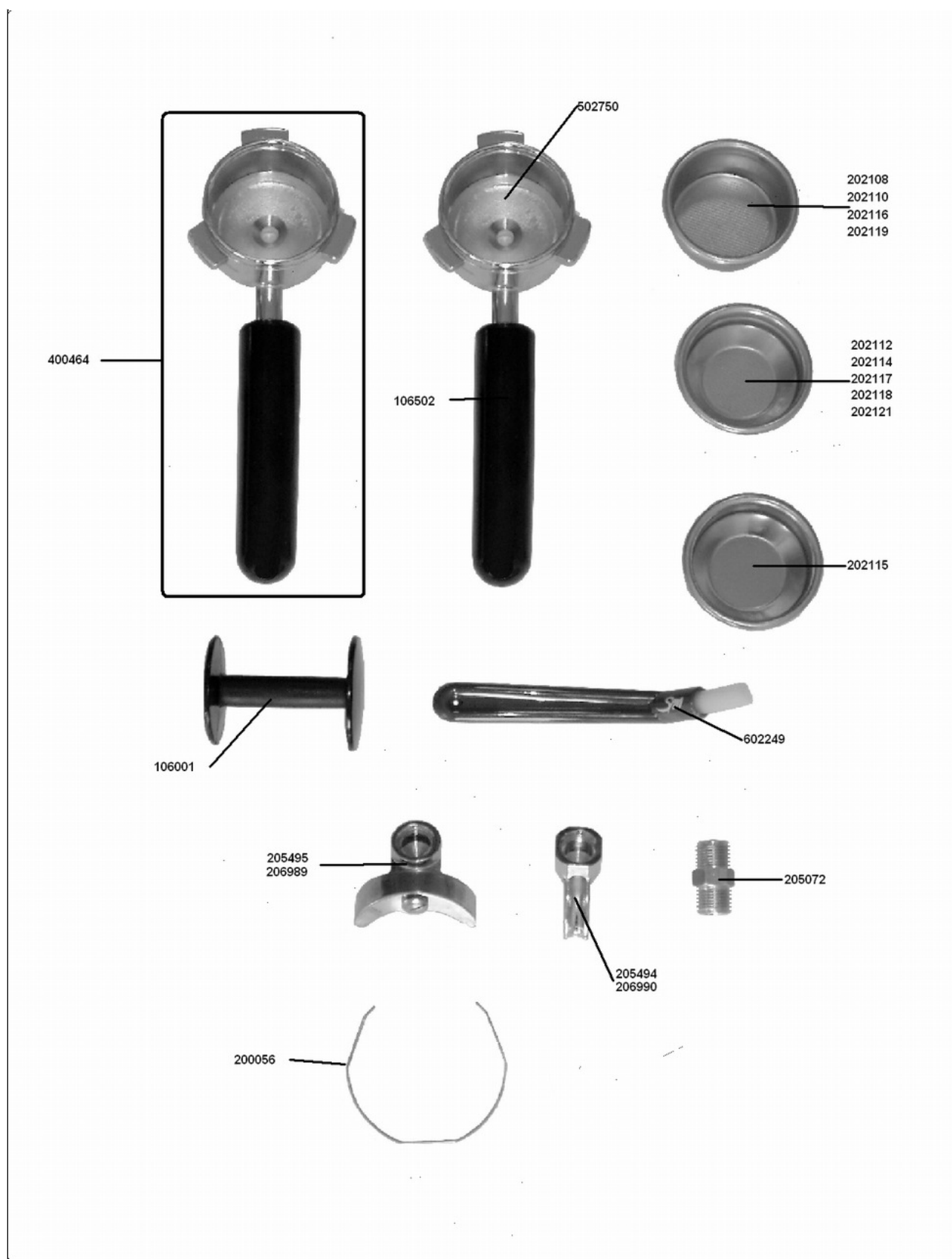


Part Number	Description
108063	3 ways electrovalve 230V unit
108063A	3 ways electrovalve 115V 60Hz
109047	OR 02025 gasket
109070	Gasket-T1 group head
109106	3/8" exchanger gasket
109115	OR 0112 silicone gasket
109130	Undercup MD gasket
109152	Gasket for circulation piston 100
202011	Undercup screen
204013	Galvanized washer external Ø 8
204074	Stainless steel screw 4x12 TCCE
204075	Stainless screw 8x20 TCCE
204083	Stainless steel screw 5x22 TE
205024	Nut 1/2" gas hole 12mm
205405	Screenholding piston
206199	Circulation injector pipe 1/2"
206213	Circulation top connection
206214	Circulation bottom connection
206272	38 cc infuser
206405	Electrovalve block
206415	Drilled piston SM100
400453	Complete T1 unit + infuser 100
400459	Nipple 1/8" injector L=175mm
400462	Nipple 1/8" injector L=86 mm
400483	Complete upper circulation tube 100 Practical/Sprint
400484	Complete upper circulation tube 100 2/3/4 groups
502052	T1 unit
507440	Thermic exchanger Ø 50 mm. circulation 1/2"
507444	Circulation bottom pipe 2/3/4 gr.
507515	Circulation top pipe SM100 2/3/4 gr.
507529	Circulation top pipe SM100 Practical
507530	Circulation bottom pipe SM100 Practical/Sprint



## Spare parts for "100 S/E RANGE"

### Section: Connections and accessories



Part Number	Description	
106001	Hand tamper	
106502	Cup handle-black satined	
200056	Filter basket clip	
202108	Filter 6 gr.	
202110	Filter 8 gr.	
202112	Filter 12 gr.	
202114	Filter 16 gr.	
202115	Blind filter	
202116	Filter 7 gr.	
202117	Filter 14 gr.	
202118	Filter 21 gr.	
202119	Filter 9 gr.	
202121	Filter 18 gr.	
205072	Nipple 3/8"x3/8"	
205494	Single spout	
205495	Double spout	
206989	Double spout height=43	
206990	Single spout height=43	
400464	Complete cup model SM100	
502750	slanting filter holding cup	
602249	Brush for gutter cleaning	





## Spare parts for "100 S/E RANGE"

### Section: Assembly thermostat steam wand SM100



Part Number	Description	
01.00837	Milker air adjustment assembly	
106613	Switch support steam-aut. 100	
108035	2 way autofill electrovalve 230 V	
108920	Card for autosteam wand with NTC	
108925	Cabling thermostat autosteam wand	
108932	Bipolar switch for wand SM100	
202429	"L" junction tap 1/4"-6/8"	
202431	Female straight junction 1/4"-6/8"	
202440	Reduction 1/4"-1/8" F	
204161	Screw 4.8 7687 4x6 TB (+) zinc plated	
205775	Straight junction 1/8"-6/4 tapped M6	
206994	inox autosteam wand + drill NTC 3K3	
400407	Assembly thermostat steam wand SM100	
509025	Support thermostat autosteam wand	
509026	Support trigger box wand	
509027	Regulator air support for thermostat	
607032	Teflon support pipe L=25 mm	
607049	Pipe solenoid valve -boiler L= 270mm for SM100	
607050	Pipe wand-air regulator L= 650mm for SM100	