

# Structure and panels

Pos.	Code	Colour	Description	Price (€)
0000				
0000	BAFUS0470		BACK PROFILE	29.94
0000	BAFUS0480		BACK PROFILE	35.78
0000	BAFUS0490		Black profile 95-4 gr.	36.93
0000	BAFUS0500		PROFILE	23.11
0000	BAFUS0510		BACK PROFILE	28.47
0000	BFFRO0370		FRONT PANEL	66.49
0000	BFFRO0380		FRONT PANEL	78.18
0000	BFFRO0390		FRONT PANEL	88.85
0000	BFFRO0400		FRONT PANEL	56.53
0000	BFFRO0410		FRONT PANEL	63.63
0000	BFFRO0420		FRONT PANEL	74.40
0000	BFFRO0430		FRONT PANEL	110.81
0000	BFFRO0440		FRONT PANEL	182.25
0000	BFPRO0250		GAS PROTECTION	6.60
0000	BFPRO0260		GAS PROTECTION	6.91
0000	BFPRO0270		Gas protection 95-4 gr.	7.20
0000	BFSUP0390		General switch support 95-2/3/4 gr.	4.51
0000	BFSUP0410		SUPPORT-GENERAL SWITCH	4.20
0000	BFSUP0530		SUPPORT FOR MANOMETER	2.00
0000	BFSUP0550		Support for manometer 95-Practical	2.00
0000	BIBAS0460		BASEMENT	21.90
0000	BIBAS0470		(BASEMENT 95-SPRINT)	28.66
0000	BIBAS0480		Basement 95-26-2 gr.	56.56
0000	BIBAS0490		Basement 95-26-3 gr.	71.65
0000	BIBAS0500		Basement 95-26-4 gr.	101.94
0000	BIBAS0510		BASEMENT	32.90
0000	BIBAS0520		FLAT	31.71
0000	BIBAS0530		BASE	49.63
0000	BIBAS0540		Basement 95-31/32-2 gr.-gas	99.19
0000	BIBAS0550		BASEMENT	73.80
0000	BIBAS0560		BASE	147.57
0000	BIBAS0570		Basement 95-31/32-4 gr.	112.37
0000	BIBAS0580		Basement 95-31/32-4 gr.-gas	209.95

## Structure and panels

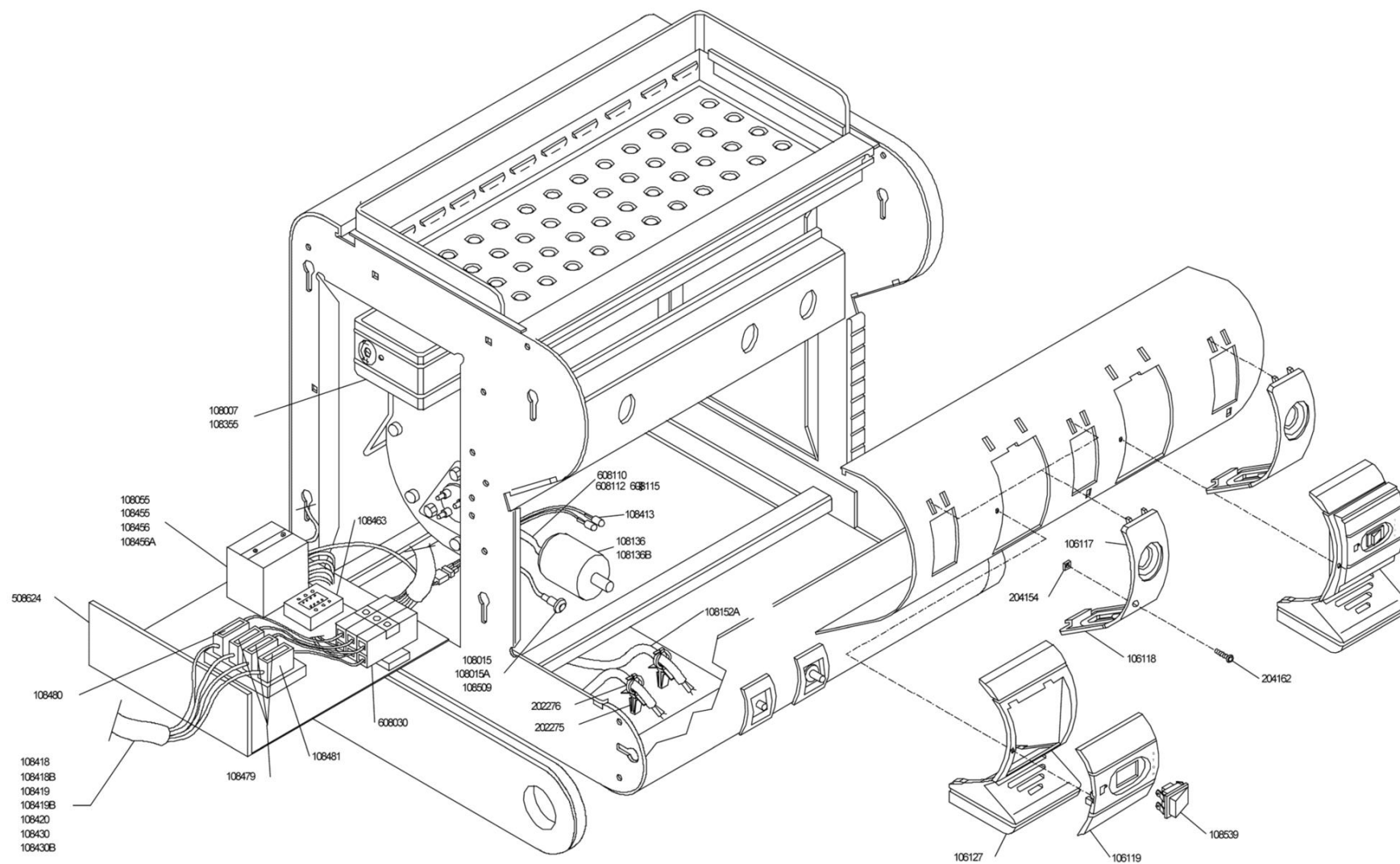
Pos.	Code	Colour	Description	Price (€)
0000	BIBAS0590		BASEMENT	39.00
0000	BIBAS0600		Basement 95-3 gr. for gas	38.75
0000	BIBAS0610		BASEMENT	48.87
0000	BIBAS0620		BASEMENT FOR GAS	48.87
0000	BICOF0720		COVER-GROUP	65.64
0000	BICOF0730		GROUP COVER	100.62
0000	BICOF0740		Cover group 95-26/31/32-4 gr.	134.09
0000	BICOF0750		COVER GROUP	40.15
0000	BICOF0760		(GROUP COVER 95-SPRINT)	51.91
0000	BICOF0770		GROUP COVER	58.48
0000	BICOF0780		GROUP COVER	71.73
0000	BICOF0790		COVER GROUP	80.32
0000	BIGRI0020		LOWER GRATE	42.97
0000	BIGRI0030		(SHAPED LOWER DRIP TRAY GRILL	51.85
0000	BIGRI0040		LOWER SHAPED GREATE	57.15
0000	BIGRI0050		LOWER SHAPED GRATE	73.18
0000	BIGRI0060		GRILL 4 GRP	82.29
0000	BIGRS0140		UPPER DRIP TRAY GRILL	35.78
0000	BIGRS0150		(UPPER DRIP TRAY GRILL 95-SPRINT)	42.84
0000	BIGRS0160		UPPER DRIP TRAY GRILL	55.58
0000	BIGRS0170		UPPER GRATE 3 GR	67.70
0000	BIGRS0180		Upper drip tray grill 95-4 gr.	87.37
0000	BILAT0050		SIDE BEZEL-RIGHT	16.58
0000	BIPIA0010		DRIP TRAY WITH DOUBLE FOLD	51.54
0000	BIPIA0040		DRIP TRAY 3 GR WITH DOUBLE FOLD	59.35
0000	BIPIA0060		DRIP TRAY 4 GRP	85.12
0000	BIPIA0090		STEEL BASIN	39.14
0000	BIPIA0150		(DRIP TRAY WITH DOUBLE FOLD	46.97
0000	BIPOR0780		BOARD	26.44
0000	BIPOR0790		STAINLESS STEEL LOWER BOARD	30.80
0000	BIPOR0800		STAINLESS STEEL LOWER BOARD	34.30
0000	BIPOR0810		STAINLESS STEEL LOWER BOARD	41.59
0000	BIPOR0820		Stainless steel lower board 95-21-4 gr.	50.18
0000	BIPOR0830		LOWER BOARD	38.04

# Structure and panels

Pos.	Code	Colour	Description	Price (€)
0000	BIPOR0840		STAINLESS STEEL LOWER BOARD	49.24
0000	BIVAS0010		UPPER CUP 1 GROUP	38.83
0000	BIVAS0020		UPPER DRAIN CUP	42.16
0000	BIVAS0030		UPPER CUP	43.63
0000	BIVAS0040		UPPER CUP 3 GR.85/95	60.11
0000	BIVAS0050		Upper cup 95-4 gr.	64.05
0000	BPSTA0250		SIDE PANEL -RIGHT	39.61
0000	BPSTA0260		SMALL SIDE PANEL-RIGHT	23.08
0000	BPSTA0270		SMALL SIDE PANEL-LEFT	23.08
0000	BPSTA0280		SIDE PANEL-LEFT	39.61
0000	BVASS0360		COMPLETE SET OF PANNELS	192.38
0000	BVASS0370		GREY	204.08
0000	BVASS0380		COMPLETE SET OF PANELS	182.43
0000	BVASS0390		COMPLETE SET OF PANELS	189.52
0000	CCEINT0060		SWITCH	2.14
0000	CCMMIN3410		FIXING SCREW SUPPORT	0.45
0000	CCMTAR0080		Plate-Practical S	7.70
0000	CCMTAR0090		Plate-Sprint S	7.70
0000	CCMTAR0100		SM PLATE	7.70
0000	CCMTAR0110		PLATE	7.70
0000	CCMTAR0120		Plate-Practical E	7.70
0000	CCMTAR0130		PLATE-SPRINT E	7.70
0000	CCMTAR0140		PLATE	7.70
0000	CCMTAR0150		PLATE	7.70
0000	CCMTAR0160		Plate 95/23	7.70
0000	CCMTAR0170		Plate-95-33	7.70
0000	CCMTAR0180		Plate-95-26	7.70
0000	CCMTAR0190		Plate-95-36	7.70
0000	CCMTAR0200		PLATE	6.72
0000	CCMTAR0210		LOGO PLATE FOR GRINDER	5.05
0000	CCMTAR0220		LSM LOGO PLATE	9.18
0000	CCMTRA1470		STAINLESS STEEL LOWER BOARD	60.11
0000	CCMTRA1480		Stainless steel lower board 95-26/31-3 gr.	75.85
0000	CCMTRA1490		Stainless steel lower board 95-26/31-4 gr.	128.31

# Structure and panels

Pos.	Code	Colour	Description	Price (€)
0000	CCMTRA1500		Stainless steel lower board 95-32-2 gr.	69.34
0000	CCMTRA1510		SHUT	75.85
0000	CCMTRA1520		STAINLESS STEEL LOWER BOARD	128.31
0000	CMPSTA0220		SIGHT GLASS	2.25
0000	CMPSTA0340		PLASTIC FOR CUP WARMER SWITCH	0.45
0000	CMPSTA0360		ON/OFF KNOB	1.50
0000	CMPSTA0380		(MANUAL SWITCH PLASTIC-SPRINT)	4.16
0000	CMPSTA0410		BASEMENT SUPPORT	2.00
0000	CMPSTA0530		(TRIANGLE-RIGHT)	6.03
0000	CMPSTA0540		(TRIANGLE-LEFT)	6.03
0000	CMPSTA0600		BLOCKING PIN	0.59
0000	CMPSTA0640		(PLEXIGLASS PARTS FOR BLOCKING	1.50
0000	CMPSTA0660		(PLASTIC BLOCK FOR COVER GROUP)	1.80
0000	CMPSTA0690		TRAY INSERT SMALL	2.25
0000	CMPSTA0700		TRAY INSERT LARGE	2.46
0000	CMPSTA1470		SWITCH CAP ON-OFF	0.67
0000	CMPSTA4470		RUBBER FOOT	3.86
0000	CMPTAR0270		LSM LOGO	7.86
0000	CMPTAR0280		PLATE - SM SPRINT/2GR.	8.09
0000	CMPTAR0290		Plate-SM 95-3 gr.	6.60
0000	CMPTAR0300		TARGHETTA MARCHIO SM	12.22
0000	CMPTRA0030		CUP HOLDER SURROUND PRACT.	29.06
0000	CMPTRA0040		(CUP HOLDER SURROUND FOR SPRINT)	35.17
0000	CMPTRA0050		CUP HOLDER SURROUND	41.29
0000	CMPTRA0060		CUP HOLDER 95/3GR	44.37
0000	CMPTRA0070		CUP-HOLDER	50.51
0000	CPCDAD0070		NUT	0.32
0000	CPCVIT0320		SELF TAPPING SCREW	0.40
0000	CPCVIT0370		SCREW	0.27
0000	CPCVIT0380		SCREW SS BLACKENED	0.23

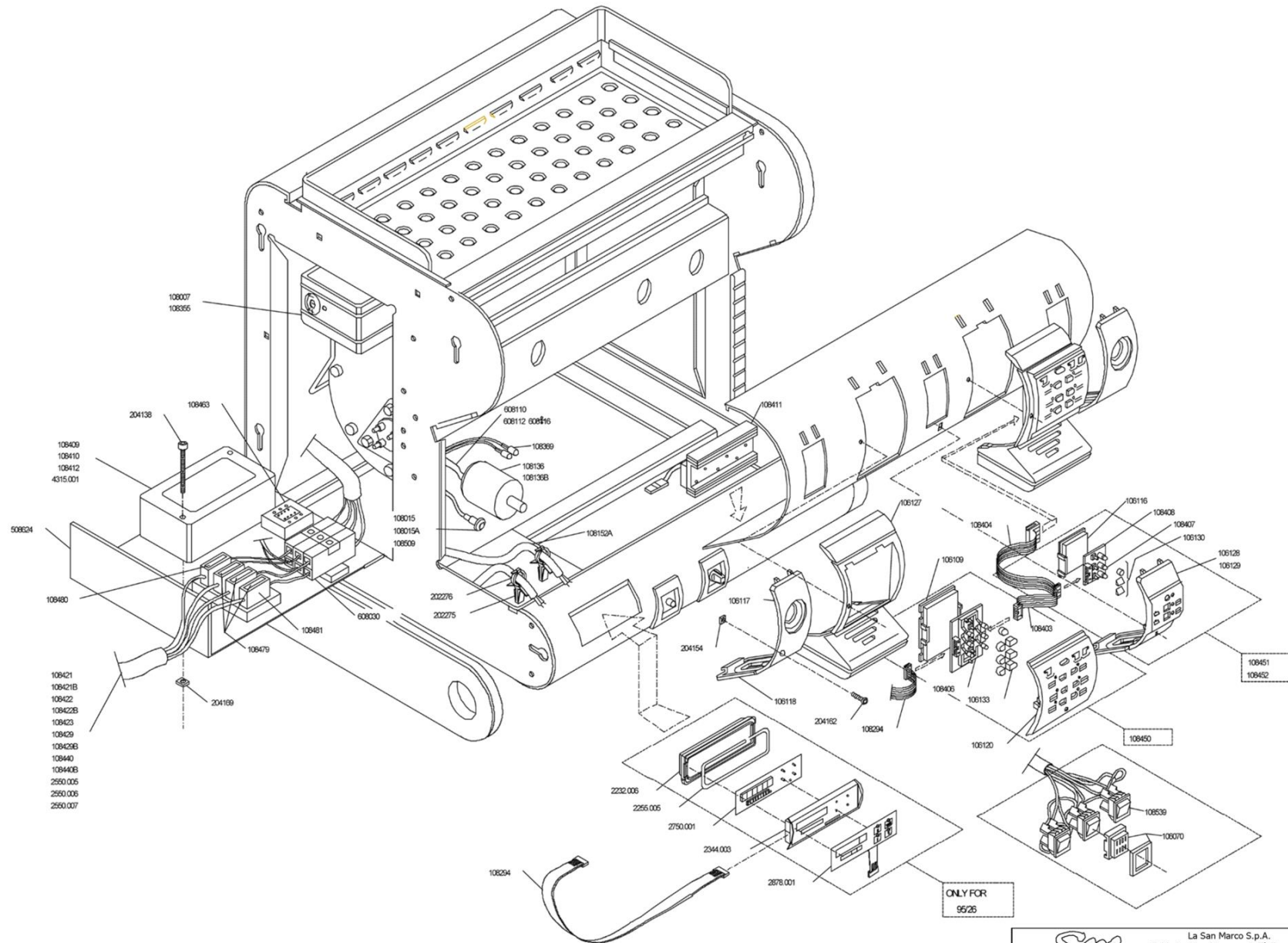


# Cabling 95-Practical-S/Sprint-S/21/31-2/3/4 gr.

Pos.	Code	Colour	Description	Price (€)
0000				
0000	BFBOX0030		BOX	22.28
0000	BVASS0100		General switch cabling 32 Amp. -2/3/4 gr. ETL	113.75
0000	CCECAB0210		CABLING	102.27
0000	CCECAB0430		CABLING	70.06
0000	CCECAB0620		GENERAL SWITCH CABLING	108.18
0000	CCECAB0670		CABLING	8.80
0000	CCECAB0950		CABLING	87.25
0000	CCECAB0960		CABLING	108.61
0000	CCECAB0970		Cabling 12/21-4 gr.	139.10
0000	CCECAB1370		Cabling 12/21-2 gr. ETL	157.46
0000	CCECAB1380		Cabling 12/21-3 gr. ETL	212.84
0000	CCECAB1400		Cabling 95-Practical-S ETL	117.36
0000	CCECAB1950		PUMP CABLE	11.60
0000	CCEFUS0030		FUSE 0,5A	0.59
0000	CCEFUS0050		FUSE 5A	0.59
0000	CCEINT0060		SWITCH	2.14
0000	CCEINT0100		GENERAL SWITCH	57.17
0000	CCEINT0110		GENERAL SWITCH	43.41
0000	CCEPOR0010		FUSE HOLDER	10.69
0000	CCSEEG0010		PILOT LAMP	3.29
0000	CCSEEG0020		PILOT LAMP	3.29
0000	CCICEN0040		AUTOLEVELLER TRIGGER BOX	88.25
0000	CCICEN0050		TRIGGER BOX	88.25
0000	CCICEN0080		AUTOFILL TRIGGER BOX	76.44
0000	CMPSTA0450		(UPPER STEAM-WATER VALVE PLASTIC)	2.00
0000	CMPSTA0460		(LOWER STEAM-WATER VALVE PLASTIC)	1.50
0000	CMPSTA0470		ON-OFF SWITCH SUPPORT	5.16
0000	CMPSTA0550		(BUTTON PANEL PIECE 95)	7.49
0000	CPCDAD0070		NUT	0.32
0000	CPCFAS0100		HOSE CLAMP	0.21
0000	CPCPLA0080		SUPPORT	0.38
0000	CPCVIT0380		SCREW SS BLACKENED	0.23
0000	CSCPRE0010		PRESSURE SWITCH	82.42

Pos.	Code	Colour	Description	Price (€)
0000	CSCTER0070		THERMOSTAT	48.74



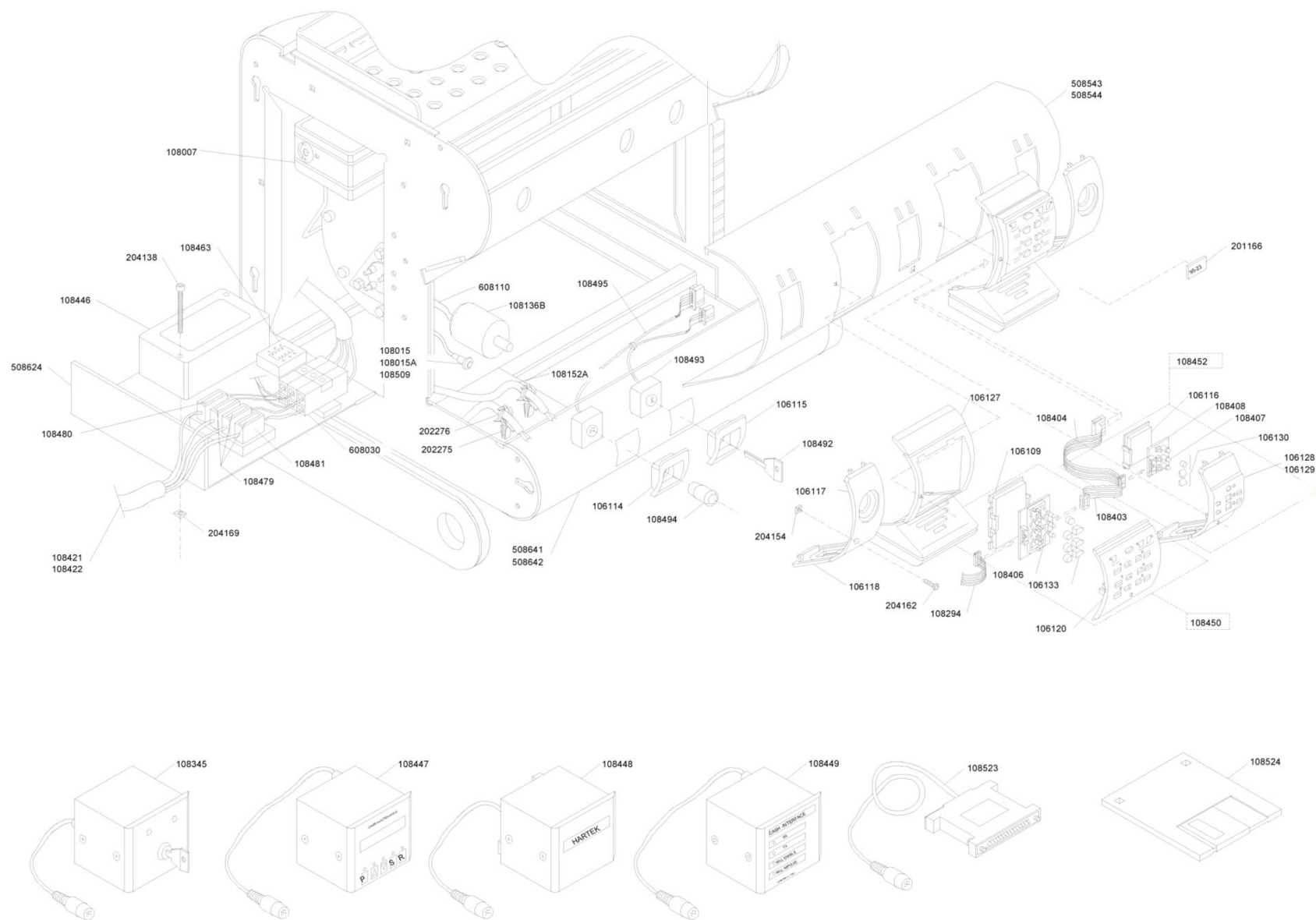


*SM*  
 La San Marco S.p.A.  
 Fabbrica Macchine per Caffè Espresso  
 34072 Gradisca d'Isonzo (GO) Italia  
<http://www.lasanmarco.com>

# Cabling 95-Practical-E/Sprint-E/22/26/32/36

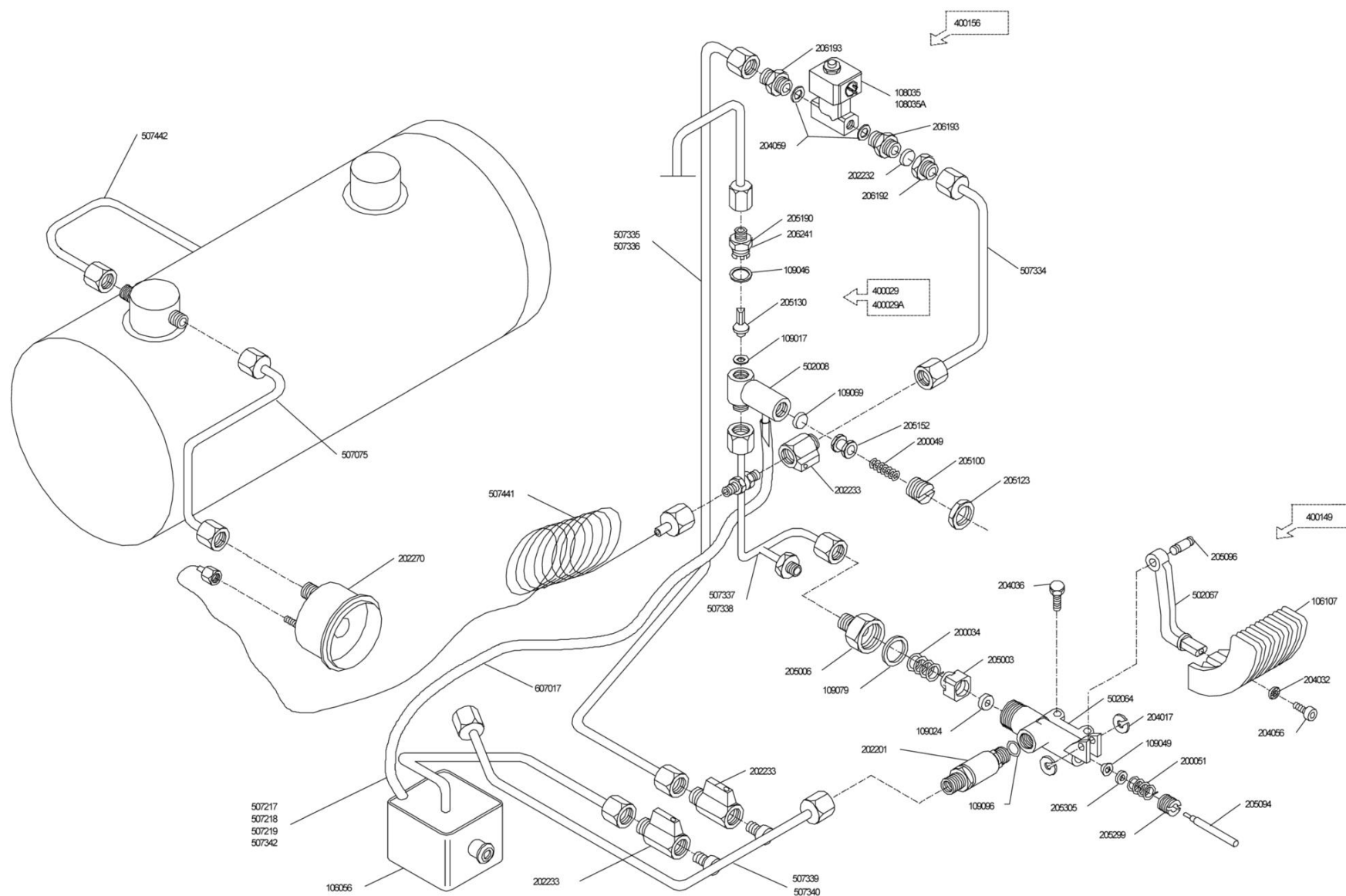
Pos.	Code	Colour	Description	Price (€)
0000				
0000	BFBOX0030		BOX	22.28
0000	BVASS0120		General switch cabling 32 Amp. 95-26-2/3/4 gr.	79.02
0000	CCECAB0210		CABLING	102.27
0000	CCECAB0440		CABLING	183.70
0000	CCECAB0450		Cabling Sprint-E ETL	175.63
0000	CCECAB0460		Cabling 95-22-2 gr. ETL	266.04
0000	CCECAB0470		Cabling 95-22-3 gr. ETL	293.00
0000	CCECAB0620		GENERAL SWITCH CABLING	108.18
0000	CCECAB0680		CABLE WATER LEVEL	8.80
0000	CCECAB0740		Cabling Practical -E ETL	136.28
0000	CCECAB1330		CABLING	157.46
0000	CCECAB1340		Cabling 95-26-2 gr.	157.46
0000	CCECAB1350		Cabling 95-26-3 gr.	183.70
0000	CCECAB1360		Cabling 95-26-4 gr.	215.75
0000	CCECAB1590		Cabling Practical -E	74.40
0000	CCECAB1740		WIRING	103.53
0000	CCECAB1950		PUMP CABLE	11.60
0000	CCECAV0340		CABLE TRIGGER BOX	11.08
0000	CCECAV0440		TOUCHPAD CONNECTOR	6.60
0000	CCECAV0490		CABLING	8.05
0000	CCEFUS0030		FUSE 0,5A	0.59
0000	CCEFUS0050		FUSE 5A	0.59
0000	CCEINT0060		SWITCH	2.14
0000	CCEINT0100		GENERAL SWITCH	57.17
0000	CCEINT0110		GENERAL SWITCH	43.41
0000	CCEPOR0010		FUSE HOLDER	10.69
0000	CCSEEG0010		PILOT LAMP	3.29
0000	CCSEEG0020		PILOT LAMP	3.29
0000	CCICEN0130		VOLUMETRIC CONTROL BOX	247.82
0000	CCICEN0300		VOLUMETRIC CONTROL BOX	306.12
0000	CCICEN0310		TRIGGER BOX	416.90
0000	CCICEN0320		TRIGGER BOX A.T. TRIAC	150.16
0000	CCICEN0520		TRIGGER BOX	772.60

Pos.	Code	Colour	Description	Price (€)
0000	CCICEN0680		DISPLAY CARD	120.30
0000	CCITAS0130		WATER KEYBOARD	19.01
0000	CCITAS0150		COMPLETE HOT WATER PAD	28.34
0000	CCITAS0160		WATER KEYBOARD + DISPLAY	46.41
0000	CCITAS0220		ASSEMBLED DOSING KEYBOARD	54.86
0000	CCITAS0290		ELECTRONIC KEYBOARD	36.49
0000	CCITAS0400		ASSEMBLED TEA KEYBOARD + DISPLAY	57.19
0000	CCITAS0430		MEMBRANE KEYBOARD	153.20
0000	CMPSTA0370		KEYBOARD COVER	1.89
0000	CMPSTA0440		COVER WATER KEYBOARD	1.45
0000	CMPSTA0450		(UPPER STEAM-WATER VALVE PLASTIC)	2.00
0000	CMPSTA0460		(LOWER STEAM-WATER VALVE PLASTIC)	1.50
0000	CMPSTA0480		DOSING BUTTON SUPPORT	5.32
0000	CMPSTA0550		(BUTTON PANEL PIECE 95)	7.49
0000	CMPSTA0560		PLASTIC TRIM-HOT WATER	3.96
0000	CMPSTA0570		TEA BUTTON SUPPORT	4.00
0000	CMPSTA0580		HOT WATER KEYS	3.47
0000	CMPSTA0590		DELIVERY BOTTON KIT	1.15
0000	CMPSTA4450		Back keyboard	2.82
0000	CMPSTA4460		PANNEL	2.82
0000	CPCDAD0070		NUT	0.32
0000	CPCDAD0100		NUT	0.31
0000	CPCFAS0100		HOSE CLAMP	0.21
0000	CPCGUA0030		RUBBER CORD	3.77
0000	CPCPLA0080		SUPPORT	0.38
0000	CPCVIT0030		SCREW	0.34
0000	CPCVIT0380		SCREW SS BLACKENED	0.23
0000	CSCPRE0010		PRESSURE SWITCH	82.42
0000	CSCTER0070		THERMOSTAT	48.74



Pos.	Code	Colour	Description	Price (€)
0000				
0000	BFBOX0030		BOX	22.28
0000	BIBAS0520		FLAT	31.71
0000	BIBAS0600		Basement 95-3 gr. for gas	38.75
0000	BIPOR0800		STAINLESS STEEL LOWER BOARD	34.30
0000	BIPOR0810		STAINLESS STEEL LOWER BOARD	41.59
0000	CCECAB0440		CABLING	183.70
0000	CCECAB0620		GENERAL SWITCH CABLING	108.18
0000	CCECAB1330		CABLING	157.46
0000	CCECAB1950		PUMP CABLE	11.60
0000	CCECAV0340		CABLE TRIGGER BOX	11.08
0000	CCECAV0440		TOUCHPAD CONNECTOR	6.60
0000	CCECAV0490		CABLING	8.05
0000	CCECAV0720		CABLE	29.21
0000	CCEFUS0030		FUSE 0,5A	0.59
0000	CCEFUS0050		FUSE 5A	0.59
0000	CCEINT0110		GENERAL SWITCH	43.41
0000	CCEPOR0010		FUSE HOLDER	10.69
0000	CCSEEG0010		PILOT LAMP	3.29
0000	CCSEEG0020		PILOT LAMP	3.29
0000	CCEVAR0100		KEYS	55.88
0000	CCEVAR0110		KEY	14.65
0000	CCICEN0260		TRIGGER BOX	583.04
0000	CCICEN0570		HARTEK INTERFACE	204.09
0000	CCICEN0590		Interface RS232 23	102.07
0000	CCICEN0600		INTERFACE	174.95
0000	CCICEN0610		LOCK	61.27
0000	CCICEN0620		MEMO BOX	291.54
0000	CCITAS0130		WATER KEYBOARD	19.01
0000	CCITAS0160		WATER KEYBOARD + DISPLAY	46.41
0000	CCITAS0220		ASSEMBLED DOSING KEYBOARD	54.86
0000	CCITAS0290		ELECTRONIC KEYBOARD	36.49
0000	CCITAS0400		ASSEMBLED TEA KEYBOARD + DISPLAY	57.19
0000	CCMTAR0160		Plate 95/23	7.70

Pos.	Code	Colour	Description	Price (€)
0000	CMPSTA0370		KEYBOARD COVER	1.89
0000	CMPSTA0420		BUTTON SUPPORT	1.50
0000	CMPSTA0430		SECURITY GAS BUTTON SUPPORT	2.28
0000	CMPSTA0440		COVER WATER KEYBOARD	1.45
0000	CMPSTA0450		(UPPER STEAM-WATER VALVE PLASTIC)	2.00
0000	CMPSTA0460		(LOWER STEAM-WATER VALVE PLASTIC)	1.50
0000	CMPSTA0480		DOSING BUTTON SUPPORT	5.32
0000	CMPSTA0550		(BUTTON PANEL PIECE 95)	7.49
0000	CMPSTA0560		PLASTIC TRIM-HOT WATER	3.96
0000	CMPSTA0570		TEA BUTTON SUPPORT	4.00
0000	CMPSTA0580		HOT WATER KEYS	3.47
0000	CMPSTA0590		DELIVERY BOTTON KIT	1.15
0000	CPCDAD0070		NUT	0.32
0000	CPCDAD0100		NUT	0.31
0000	CPCFAS0100		HOSE CLAMP	0.21
0000	CPCPLA0080		SUPPORT	0.38
0000	CPCVIT0030		SCREW	0.34
0000	CPCVIT0380		SCREW SS BLACKENED	0.23
0000	CSCPRE0010		PRESSURE SWITCH	82.42
0000	CSCTER0070		THERMOSTAT	48.74

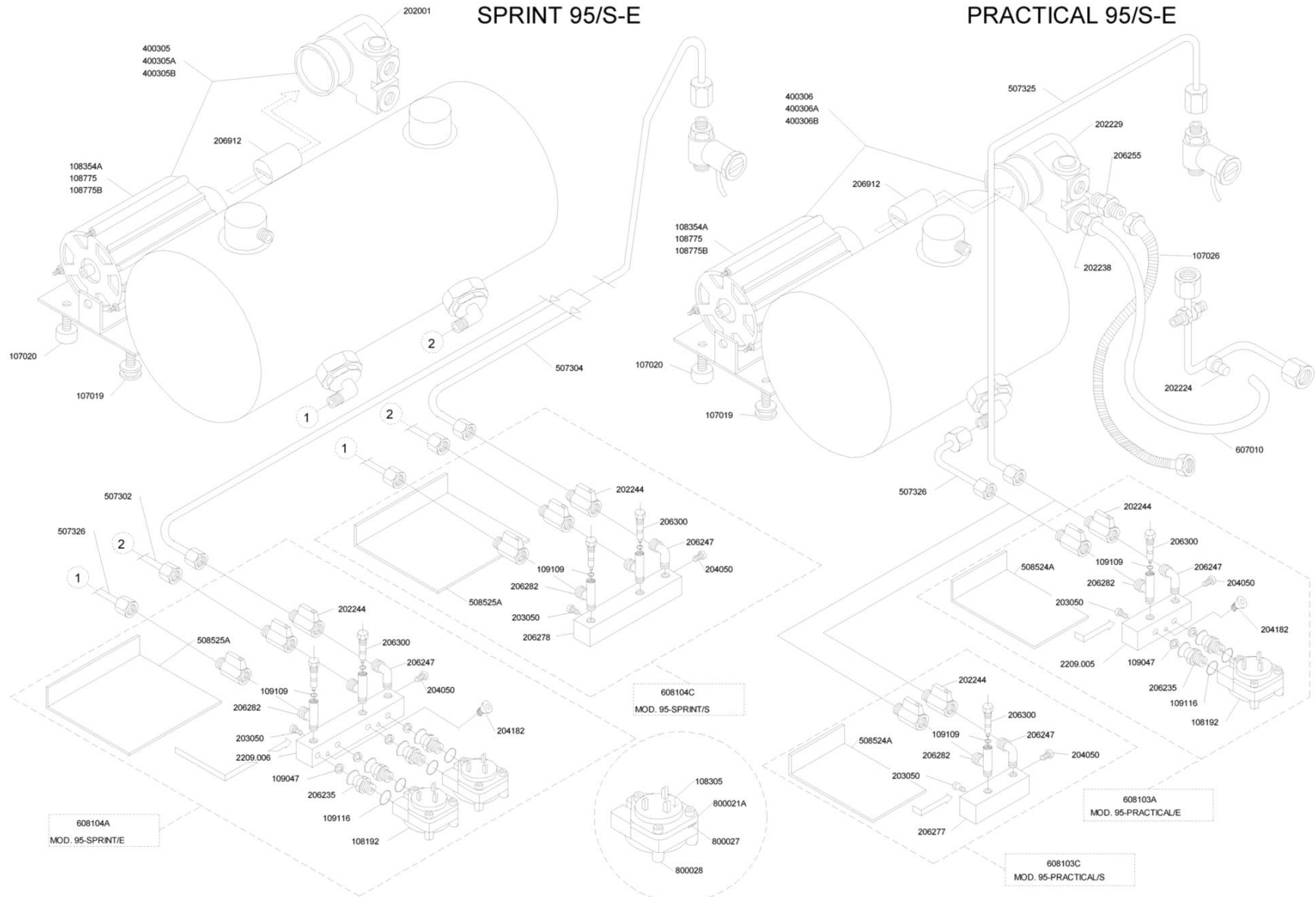


## Autofill hydraulic system 95

Pos.	Code	Colour	Description	Price (€)
0000	BOFUS0150		VALVE BODY	14.89
0000	BOFUS0200		VALVE BODY	26.73
0000	BOFUS0710		BUTTON LEVER	6.91
0000	BPTUB0310		VALVE DISCHARGE PIPE	1.16
0000	BRTUB0630		PIPE	23.38
0000	BRTUB0780		FEED PIPE	23.42
0000	BRTUB1140		PIPE-COPPER	7.31
0000	BRTUB1280		BOILER TUBE	8.22
0000	BRTUB1290		PIPE	13.19
0000	BRTUB1330		SUPPLY PIPE	30.09
0000	BRTUB1340		FEED PIPE	30.09
0000	BRTUB1630		AUTOFILL PIPE	8.24
0000	BRTUB2480		EXHAUST PIPE	5.42
0000	BRTUB2510		EXHAUST PIPE	5.95
0000	BRTUB2540		AUTOFILL INLET PIPE 2-3-4 GR.	6.45
0000	BRTUB2640		DRAIN-PIPE	5.49
0000	BRTUB2950		AUTOFILL PIPE	9.44
0000	BRTUB2960		TUBE	9.80
0000	BVASS1720		COMPLETE BUTTON	80.89
0000	BVASS2280		COMPLETE VALVE	37.81
0000	BVASS2290		NO RETURN VALVE	37.89
0000	BVKIT0020		AUTOFILL KIT	255.11
0000	CCEELE0090		INLET SOLENOID	51.07
0000	CCEELE0140		ELECTROVALVE-AUTOFILL	51.07
0000	CCMFILO230		STAINLES STEEL FILTER	0.64
0000	CCMMIN0110		STAINLESS STEEL PIN	1.73
0000	CCMMIN1020		STEAM NUT	1.36
0000	CCMMIN1260		FERRULE	2.33
0000	CCMMIN1280		BLOCKING RING	1.30
0000	CCMMIN1380		BLOCKING RING	1.89
0000	CCMMIN1610		NIPPLE	2.28
0000	CCMMIN1780		NIPPLE	3.51
0000	CCMMIN1800		NIPPLE	3.61
0000	CCMMIN1950		PIN FOR HANDLE	1.80



Pos.	Code	Colour	Description	Price (€)
0000	CCMMIN2070		HOLDING PISTON	1.67
0000	CCMMIN2170		PISTON	1.94
0000	CCMMIN2200		NO RETURN VALVE PISTON	1.64
0000	CCMMIN2700		REDUCTION	4.32
0000	CCMMIN2870		GROMMET	0.48
0000	CCMMOL0040		SPRING	1.50
0000	CCMMOL0070		SPRING	0.86
0000	CCMMOL0080		SPRING	1.15
0000	CMPSTA0160		WASTE DRAIN	2.61
0000	CMPSTA0350		HANDLE	2.82
0000	CPCMAN0040		DOUBLE MANOMETER	40.17
0000	CPCRON0050		SEEGER RING	0.17
0000	CPCRON0130		GROMMET	0.21
0000	CPCRON0250		WASHER	0.32
0000	CPCRUB0020		TAP	9.25
0000	CPCVAL0030		CHECK VALVE	11.60
0000	CPCVIT0060		SCREW	0.27
0000	CPCVIT0100		SCREW	0.23
0000	CTSGUA0110		SEAL	1.08
0000	CTSGUA0150		SEAL	0.78
0000	CTSGUA0210		SEAL	1.08
0000	CTSGUA0270		GASKET	0.40
0000	CTSGUA0320		SEAL	0.69
0000	CTSORI0010		SEAL O-RING	0.40
0000	CTSORI0030		SEAL O-RING	0.34

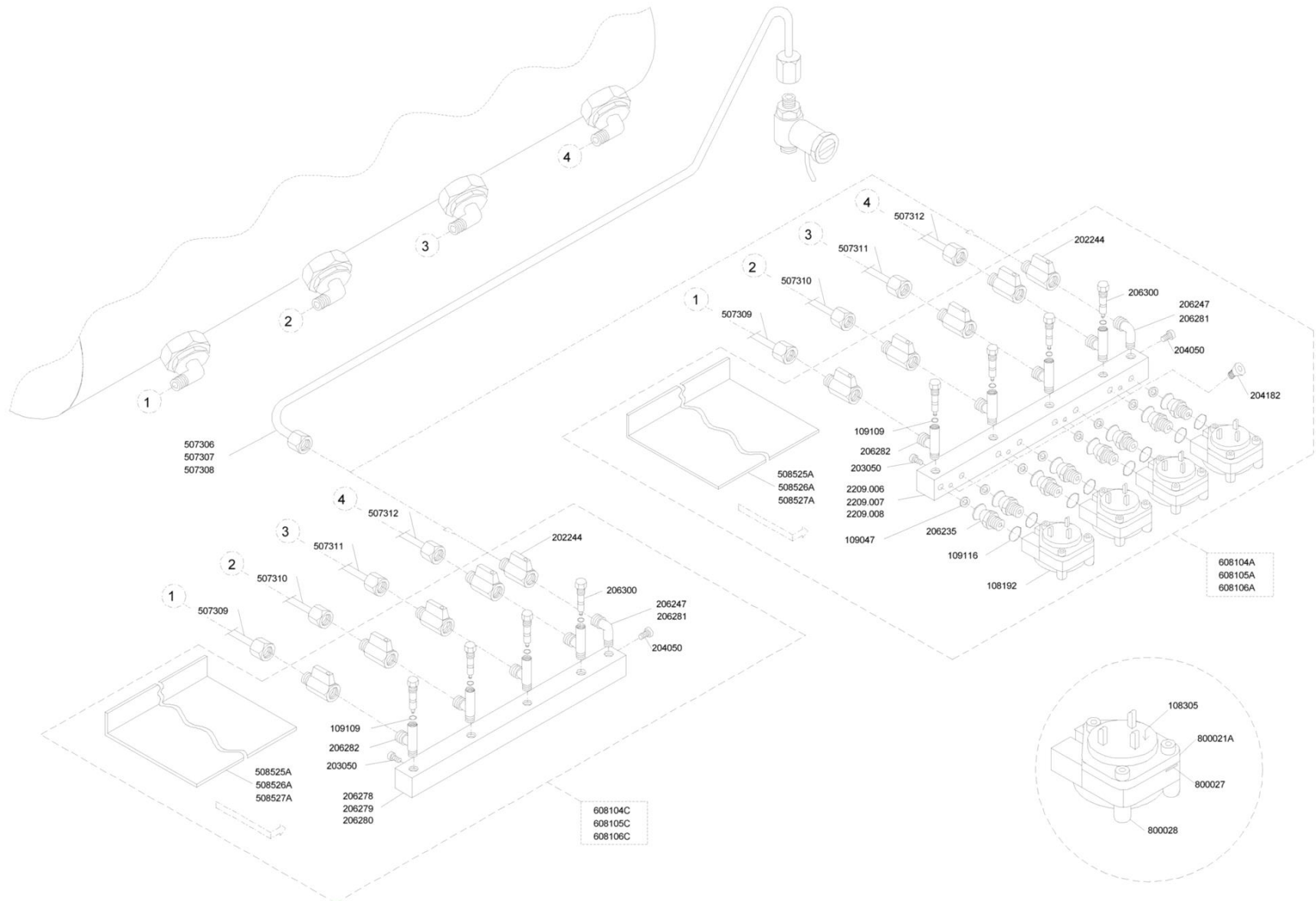


# Hydraulic system 95-Practical/Sprint

Pos.	Code	Colour	Description	Price (€)
0000				
0000	800021A		IMPELLER CAP	43.77
0000	800027		O-RING	0.43
0000	800028		FLOW METER	28.56
0000	BFSUP1130		CLUTCH POS WATER METER SUPPORT	6.77
0000	BFSUP1160		Clutch support for positin water meters 95-Practical	5.76
0000	BPTUB0040		TAIL PIPE - SPRINT E PUMP	3.40
0000	BRTUB3040		VALVE PIPE/BLOCK	8.63
0000	BRTUB3380		VALVE PIPE - POSIT. WATER METER	9.23
0000	BRTUB3700		POSIT. WATER METER PIPE-2ND INJECTO	8.74
0000	BRTUB3750		PIPE-POS.WATER METER/FIST INJECT.	8.20
0000	BVASS1050		CLUTCH FLOW 2 GR	224.50
0000	BVASS1065		Clutch flow meters-95 21 -2 gr.-assembly	71.46
0000	BVASS1170		CLUTCH FLOW METERS - ASSEMBLY	139.96
0000	BVASS1560		MOTOR + PUMP	324.41
0000	BVASS1570		PUMP+ENGINE 240V.COMPLETE	313.29
0000	BVASS1610		MOTOR+PUMP FOR 1 GROUP	320.88
0000	BVASS1630		ENGINE + PUMP	314.51
0000	CCEMOT0020		ENGINE FOR INTERNAL PUMP 110V.	154.68
0000	CCEMOT0050		INTERNAL MOTOR FOR JOINT	166.21
0000	CCEMOT0070		INTERNAL MOTOR	166.21
0000	CCEVAR0020		IMPELLER	13.16
0000	CCICON0010		POSITION WATER METER	78.75
0000	CCMMIN1180		Water distributor-Practical	9.51
0000	CCMMIN1190		POSITION WATER METER DISTRIBUTOR	15.05
0000	CCMMIN1220		Distributor-flow meter Practical	11.08
0000	CCMMIN1230		WATER DISTRIBUTION 2 GR.	13.76
0000	CCMMIN1440		GIGLEUR + FILTER + 109047+109109	1.82
0000	CCMMIN1720		NIPPLE	2.99
0000	CCMMIN2400		T CONNECTION	7.20
0000	CCMMIN2670		NEW CONNECTION FOR POSITION WATER M	2.64
0000	CPCANT0010		ANTIVIBRATING	6.03
0000	CPCANT0020		ANTIVIBRATING	3.92
0000	CPCPLA0200		JOINT FOR MOTOR PUMP	1.72

# Hydraulic system 95-Practical/Sprint

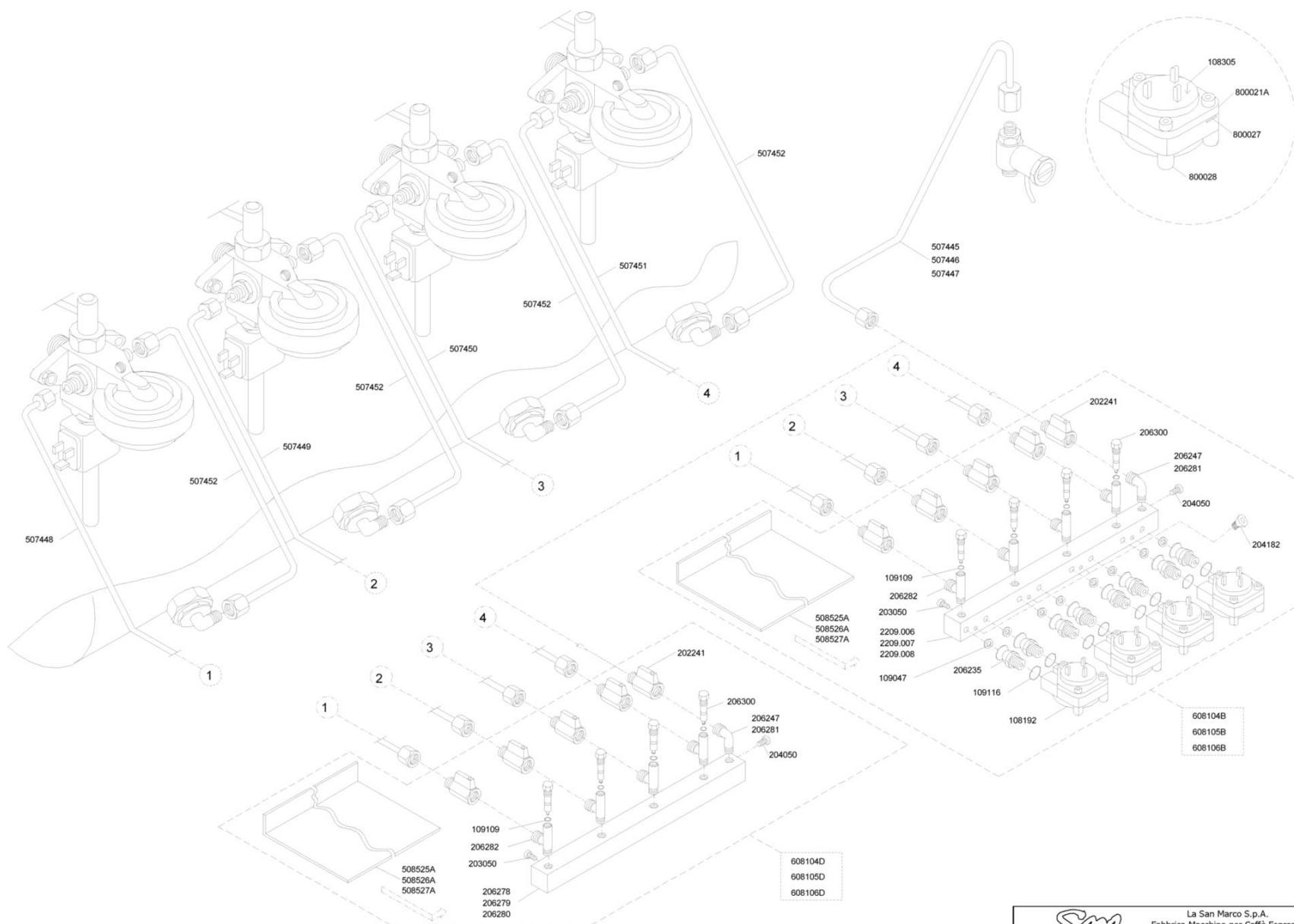
Pos.	Code	Colour	Description	Price (€)
0000	CPCRAC0060		PIPE FITTING	2.15
0000	CPCRAC0330		NIPPLE	5.16
0000	CPCRAC0480		"L" CONNECTION	4.16
0000	CPCRUB0010		VALVE	9.25
0000	CPCTGO0100		HOSE FLEX	16.95
0000	CPCVIT0430		SCREW	0.50
0000	CPCVIT0480		SCREW	0.40
0000	CPCVIT0880		SCREW	0.23
0000	CSCPOM0090		(VOLUMETRIC PUMP)	131.23
0000	CSCPOM0110		(PUMP OFR SPRINT)	151.63
0000	CTSORI0040		SEAL	0.64
0000	CTSORI0070		GASKET	0.40
0000	CTSORI0110		O-RING	0.34



Pos.	Code	Colour	Description	Price (€)
0000				
0000	800021A		IMPELLER CAP	43.77
0000	800027		O-RING	0.43
0000	800028		FLOW METER	28.56
0000	BFSUP1130		CLUTCH POS WATER METER SUPPORT	6.77
0000	BFSUP1140		SUPPORT	8.21
0000	BFSUP1150		Clutch position water meters support 95-4 gr.	11.01
0000	BRTUB0060		PIPE-1ST POS.WATER METER-1ST INJECT	7.92
0000	BRTUB0230		PIPE-2ND POS. WATER METER-2ND INJEC	8.74
0000	BRTUB0350		PIPE-3RD POS.WATER METER-3RD INJECT	9.62
0000	BRTUB0440		Pipe - 4th pos.water meter/4th injector 95	10.40
0000	BRTUB3350		PIPE	9.68
0000	BRTUB3360		PIPE	10.50
0000	BRTUB3370		PIPE	11.46
0000	BVASS1050		CLUTCH FLOW 2 GR	224.50
0000	BVASS1065		Clutch flow meters-95 21 -2 gr.-assembly	71.46
0000	BVASS1080		SET OF POSITION WATER METERS	306.12
0000	BVASS1095		Clutch flow meters-95 21 -3 gr.-assembly	95.08
0000	BVASS1100		CLUCH FLOW METER- 4 GR ASSEMBLY	390.64
0000	BVASS1105		Clutch flow meters-95 21 -4 gr.-assembly	122.72
0000	CCEVAR0020		IMPELLER	13.16
0000	CCICON0010		POSITION WATER METER	78.75
0000	CCMMIN1170		Water distributor-4 gr.	21.89
0000	CCMMIN1190		POSITION WATER METER DISTRIBUTOR	15.05
0000	CCMMIN1200		POSITION WATER METER DISTRIBUTOR	20.77
0000	CCMMIN1210		POSITION WATER-METER DISTRIBUTOR 4G	32.10
0000	CCMMIN1230		WATER DISTRIBUTION 2 GR.	13.76
0000	CCMMIN1240		WATER DISTRIBUTOR 3 GR	15.07
0000	CCMMIN1440		GIGLEUR + FILTER + 109047+109109	1.82
0000	CCMMIN2400		T CONNECTION	7.20
0000	CCMMIN2670		NEW CONNECTION FOR POSITION WATER M	2.64
0000	CPCRAC0480		"L" CONNECTION	4.16
0000	CPCRUB0010		VALVE	9.25
0000	CPCVIT0430		SCREW	0.50

# Hydraulic system 95-21/22/23/26

Pos.	Code	Colour	Description	Price (€)
0000	CPCVIT0480		SCREW	0.40
0000	CPCVIT0880		SCREW	0.23
0000	CTSORI0040		SEAL	0.64
0000	CTSORI0070		GASKET	0.40
0000	CTSORI0110		O-RING	0.34

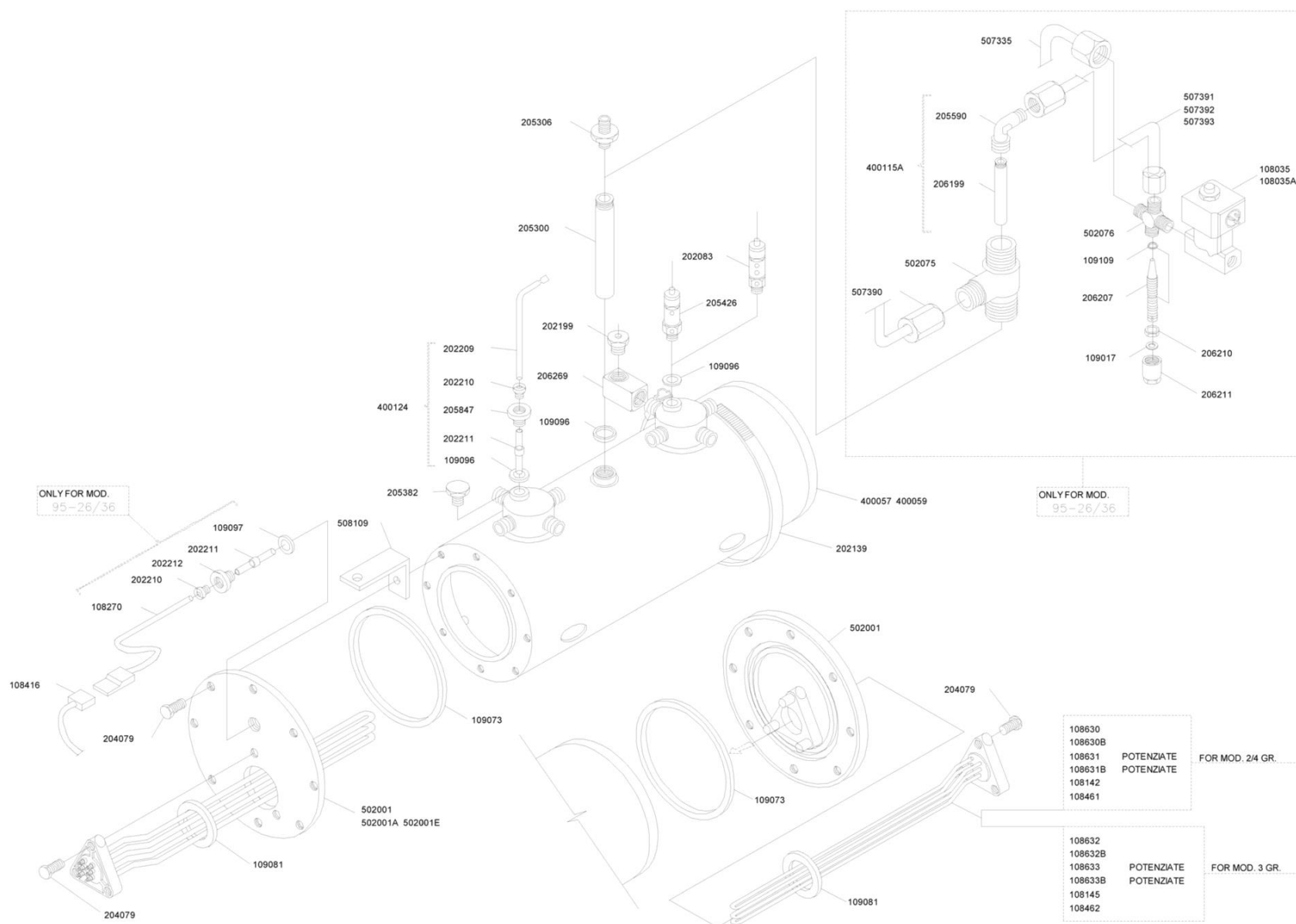




Pos.	Code	Colour	Description	Price (€)
0000				
0000	800021A		IMPELLER CAP	43.77
0000	800027		O-RING	0.43
0000	800028		FLOW METER	28.56
0000	BFSUP1130		CLUTCH POS WATER METER SUPPORT	6.77
0000	BFSUP1140		SUPPORT	8.21
0000	BFSUP1150		Clutch position water meters support 95-4 gr.	11.01
0000	BRTUB0020		PIPE 1ST POS. WATER METER-COOLED	7.44
0000	BRTUB0180		PIPE	8.16
0000	BRTUB0330		PIPE	8.83
0000	BRTUB0420		PIPE	9.52
0000	BRTUB1930		INJECTOR PIPE-COOLED GROUP	6.82
0000	BRTUB3320		PIPE	8.32
0000	BRTUB3330		TUBE	8.79
0000	BRTUB3340		TUBE	9.45
0000	BVASS1060		Clutch flow meters-95 32/33/36-2 gr.-assembly	233.25
0000	BVASS1090		CLUTCH FLOW METERS-ASSEMBLY	319.23
0000	CCEVAR0020		IMPELLER	13.16
0000	CCICON0010		POSITION WATER METER	78.75
0000	CCMMIN1170		Water distributor-4 gr.	21.89
0000	CCMMIN1190		POSITION WATER METER DISTRIBUTOR	15.05
0000	CCMMIN1200		POSITION WATER METER DISTRIBUTOR	20.77
0000	CCMMIN1210		POSITION WATER-METER DISTRIBUTOR 4G	32.10
0000	CCMMIN1230		WATER DISTRIBUTION 2 GR.	13.76
0000	CCMMIN1240		WATER DISTRIBUTOR 3 GR	15.07
0000	CCMMIN1440		GIGLEUR + FILTER + 109047+109109	1.82
0000	CCMMIN2400		T CONNECTION	7.20
0000	CCMMIN2670		NEW CONNECTION FOR POSITION WATER M	2.64
0000	CPCRAC0480		"L" CONNECTION	4.16
0000	CPCRUB0030		TAP	9.25
0000	CPCVIT0430		SCREW	0.50
0000	CPCVIT0480		SCREW	0.40
0000	CPCVIT0880		SCREW	0.23
0000	CTSORI0040		SEAL	0.64

# Hydraulic system 95-31/32/36

Pos.	Code	Colour	Description	Price (€)
0000	CTSORI0070		GASKET	0.40
0000	CTSORI0110		O-RING	0.34



108630  
108630B  
108631 POTENZIATE  
108631B POTENZIATE  
108142  
108461

POTENZIATE  
POTENZIATE

FOR MOD. 2/4 GR.

108632  
108632B  
108633  
108633B  
108145  
108462

POTENZIATE  
POTENZIATE

POTENZIAT  
POTENZIAT

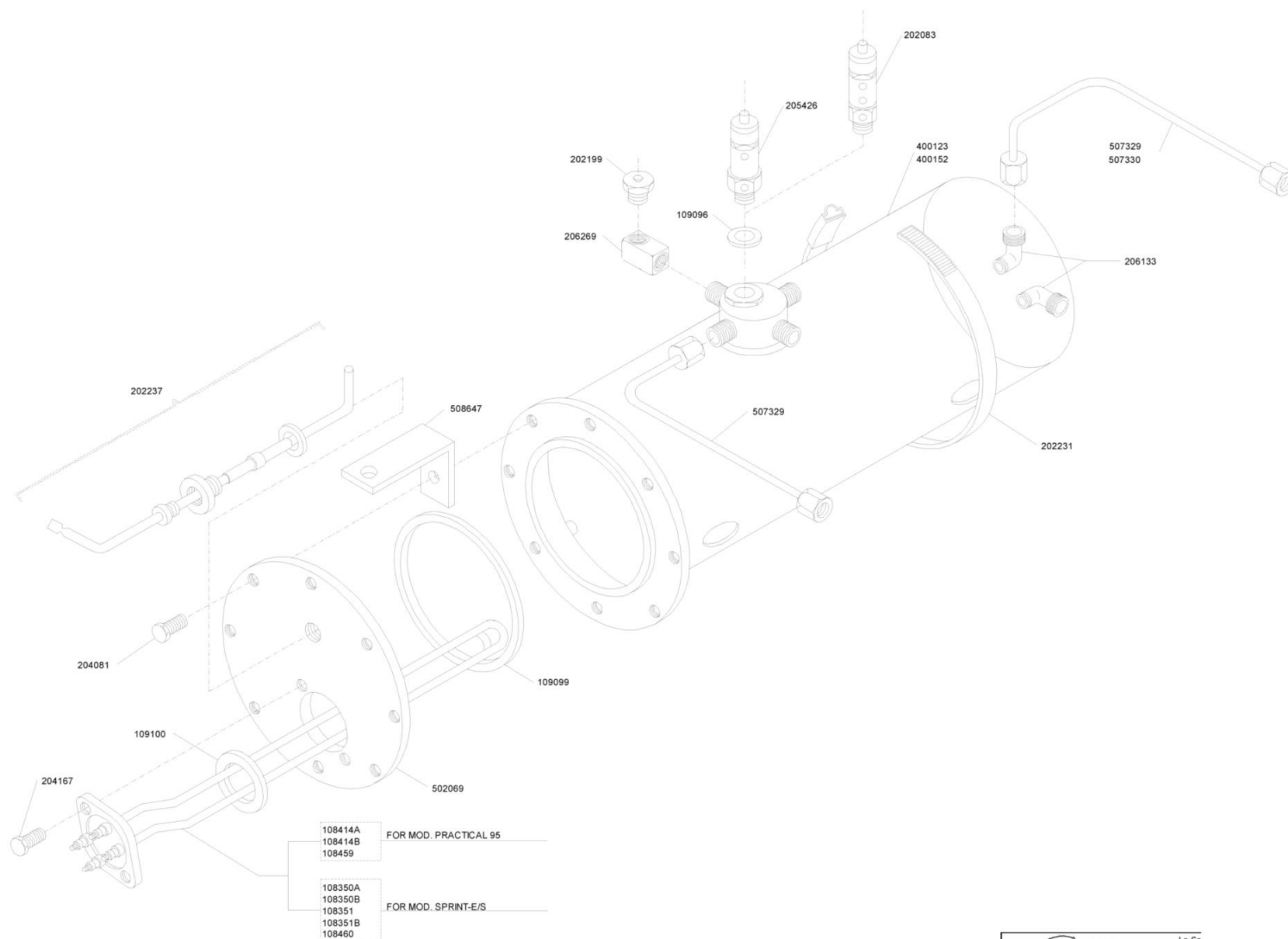
FOR MOD. 3 GR.



La San Marco S.p.A.  
Fabbrica Macchine per Caffè Espresso  
34072 Gradisca d'Isonzo (GO) Italia  
<http://www.lasanmarco.com>

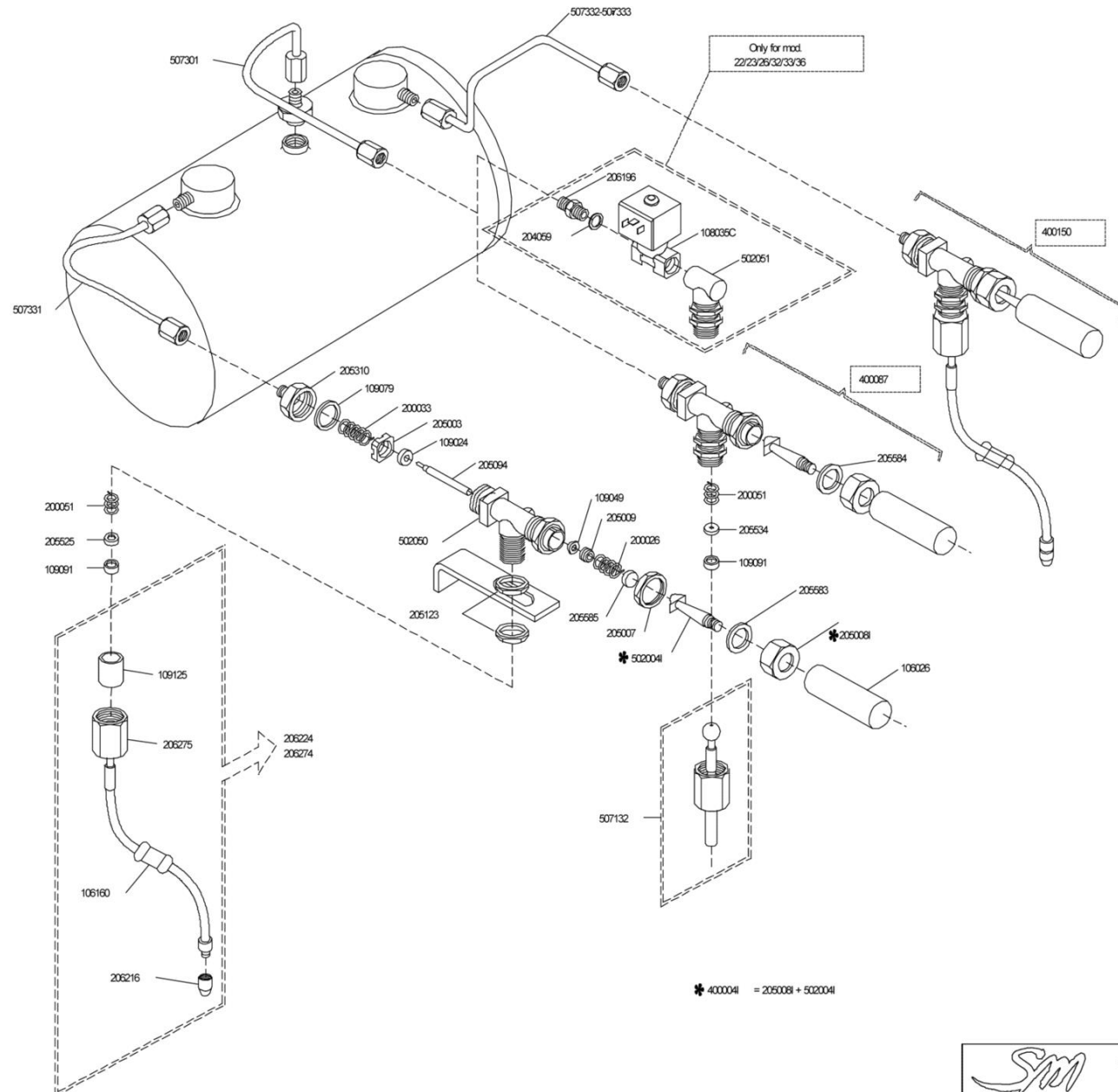
Pos.	Code	Colour	Description	Price (€)
0000				
0000	BFSUP0680		PRESSURE REGULATOR SUPPORT	3.29
0000	BOFUS0260		BOILE COVER	111.45
0000	BOFUS0340		WATER CONNECTION FOR MIXER	13.76
0000	BOFUS0750		4-WAY CONNECTION FOR MIXER	9.39
0000	BRCAL0240		BOILER BODY	458.06
0000	BRCAL0260		BOILER-BODY	773.33
0000	BRTUB2040		Mixer pipe 2 gr.	8.81
0000	BRTUB2050		Mixer pipe 3 gr.	9.51
0000	BRTUB2060		Mixer pipe 4 gr.	10.54
0000	BRTUB2210		Drawing water pipe for mixer	8.32
0000	BRTUB2950		AUTOFILL PIPE	9.44
0000	BVASS1670		COMPLETE INJECTOR	8.86
0000	BVASS2000		AUTOFILL COMPLETE PROBE	12.53
0000	CCECAV0350		TEMPERATURE PROBE CABLE	8.80
0000	CCEELE0090		INLET SOLENOID	51.07
0000	CCEELE0140		ELECTROVALVE-AUTOFILL	51.07
0000	CCERES0240		BOILER ELEMENT	74.08
0000	CCERES0350		HEAT-ELEMENT	64.05
0000	CCERES0360		HEATING ELEMENT	64.05
0000	CCERES0380		HEATING ELEMENT	64.05
0000	CCERES0400		HEATING ELEMENT	64.05
0000	CCERES0410		HEAT ELEMENT	74.08
0000	CCERES0420		Heat element-4500W 110 V	74.08
0000	CCERES0430		HEATING ELEMENT	64.05
0000	CCERES0460		HEAT ELEMENT	64.05
0000	CCERES0480		HEATING ELEMENT	74.08
0000	CCERES0500		HEAT-ELEMENT	74.08
0000	CCERES0510		HEATING ELEMENT	74.08
0000	CCISON0080		TEMPERATURE PROBE	40.67
0000	CCMMIN0020		PROBE	2.61
0000	CCMMIN0930		REGISTER NUT	1.11
0000	CCMMIN1770		NIPPLE	5.88
0000	CCMMIN2370		"L" INJECTOR CONNECTION	4.83

Pos.	Code	Colour	Description	Price (€)
0000	CCMMIN2650		VACCUM VALVE CONNECTION	5.68
0000	CCMMIN2730		RING	3.51
0000	CCMMIN3260		Register pin	1.70
0000	CCMMIN3460		BLIND PLUG	2.18
0000	CCMMIN3480		PLUG-BLIND	1.89
0000	CMPTOR0080		TEFLON INSULATOR	5.16
0000	CMPTOR0130		CIRCULATION INJECTOR PIPE	2.33
0000	CMPTOR0140		WATER EXTRACTING TUBE	3.12
0000	CPCFAS0060		CLIPS FIXING BOILER TO FRAME	6.26
0000	CPCRAC0130		CONNECTION NUT	11.56
0000	CPCRAC0140		RING	2.68
0000	CPCVAL0040		AIR RELEASE VALVE	5.98
0000	CPCVIT0350		SCREW	0.99
0000	CSCSIC0020		SECURITY VALVE FOR BOILER	27.74
0000	CTSGUA0240		SEAL	13.29
0000	CTSGUA0280		GASKET	1.89
0000	CTSGUA0320		SEAL	0.69
0000	CTSGUA0330		GASKET FOR SIGHT GLASS PROBE	0.59
0000	CTSORI0010		SEAL O-RING	0.40
0000	CTSORI0070		GASKET	0.40



**Boiler 95-Practical-S/E Sprint-S/E**

Pos.	Code	Colour	Description	Price (€)
0000				
0000	BFSUP0730		SUPPORT	3.29
0000	BOFUS0250		BOILER-LID PRACTICAL	68.85
0000	BRCAL0350		BOILER BODY 1 GROUP	369.28
0000	BRCAL0360		BOILER BODY	276.98
0000	BRTUB2090		HOT WATER PIPE/PRACTICAL	8.98
0000	BRTUB3660		STEAM/WATER PIPE	9.01
0000	CCERES0310		HEATING ELEMET	39.41
0000	CCERES0320		HEATING ELEMENT	39.41
0000	CCERES0330		HEATING ELEMENT	44.69
0000	CCERES0580		HEATING ELEMENT SPRINT 3000W 110V	53.55
0000	CCERES0590		HEATING ELEMENT	53.55
0000	CCERES0600		HEATING ELEMENT	53.55
0000	CCERES0610		HEATING ELEMENT	63.74
0000	CCERES0620		HEATING ELEMENT	63.74
0000	CCMMIN0030		AUTOFILL PROBE	14.69
0000	CCMMIN2380		L CONNECTION	4.52
0000	CCMMIN2650		VACCUM VALVE CONNECTION	5.68
0000	CPCVAL0040		AIR RELEASE VALVE	5.98
0000	CPCVIT0540		S/S SCREW	0.92
0000	CPCVIT0930		SCREW	0.86
0000	CSCSIC0020		SECURITY VALVE FOR BOILER	27.74
0000	CTSGUA0320		SEAL	0.69
0000	CTSGUA0340		GASKET	7.78
0000	CTSGUA0350		ELEMENT GASKET SPRINT	1.68





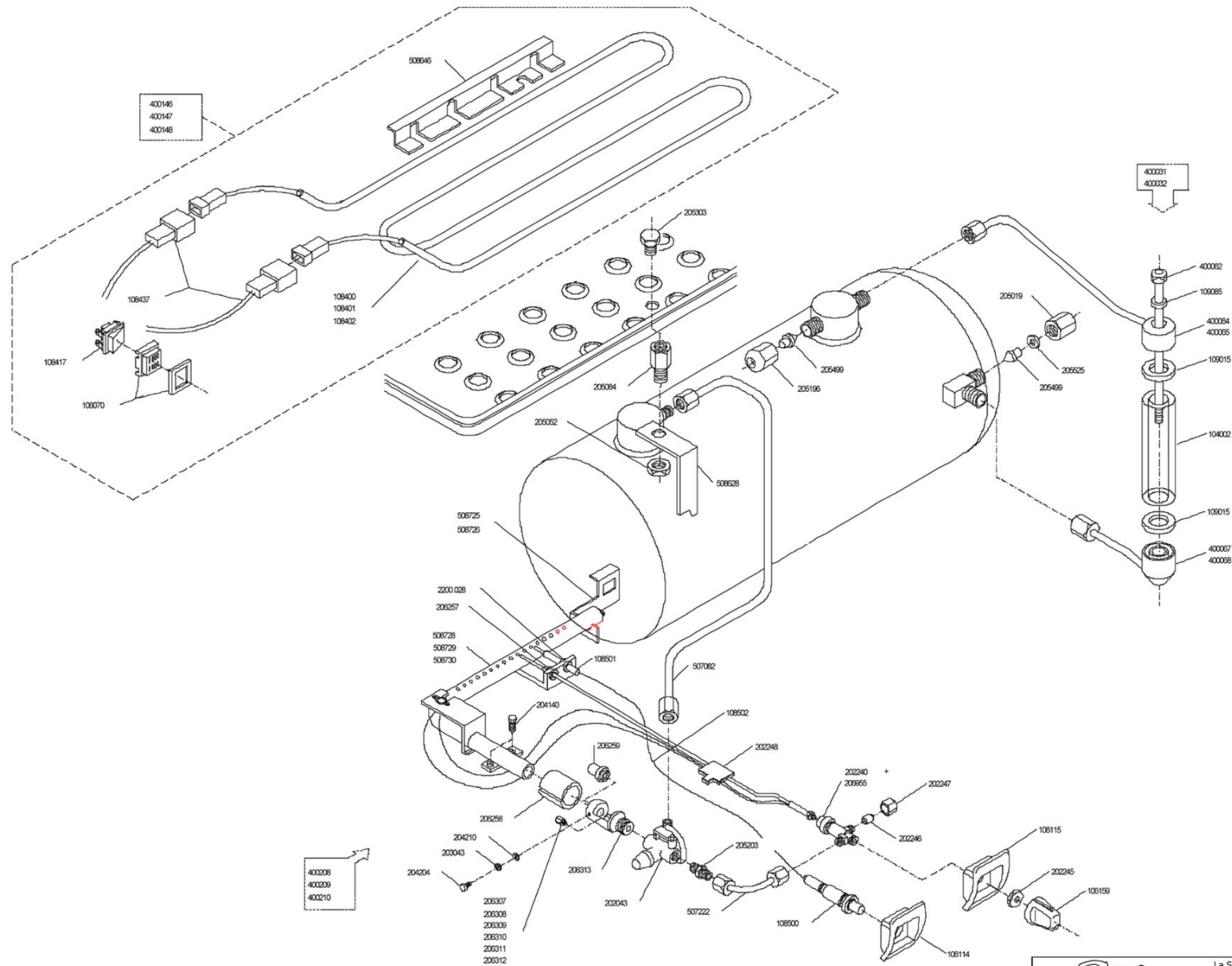
# Steam and water valve 95

Pos.	Code	Colour	Description	Price (€)
0000				
0000	BOFUS0160		STEAM VALVE BODY	20.42
0000	BRTUB0470		WATER PIPE	24.42
0000	BRTUB2170		DRAWING WATER TUBE	8.74
0000	BRTUB2320		STEAM DRAWING TUBE 2/3 GR	8.77
0000	BRTUB2370		STEAM DRAWING TUBE 2-3 GR	9.01
0000	BRTUB3500		STEAM PIPE RIGHT 3-4 GR	8.98
0000	BVASS0800		(NUT + STEAM LEVER-STAINLESS STEEL)	14.96
0000	BVASS1820		COMPLETE WATER TAP	103.47
0000	BVASS1910		COMPLETE STEAM VALVE	98.19
0000	CCEELE0100		ELECTROVALVE-WATER DRAWING	51.07
0000	CCMMIN0110		STAINLESS STEEL PIN	1.73
0000	CCMMIN0660		NUT	5.42
0000	CCMMIN0820		NUT	1.37
0000	CCMMIN1020		STEAM NUT	1.36
0000	CCMMIN1040		STEAM-MARKER'S NUT	5.68
0000	CCMMIN1350		RING	0.88
0000	CCMMIN1570		COMMAND LEVER FOR STEAM-MAKER	9.30
0000	CCMMIN1710		NIPPLE	3.04
0000	CCMMIN2070		HOLDING PISTON	1.67
0000	CCMMIN2720		RING	0.56
0000	CCMMIN2740		NIPPLE	4.59
0000	CCMMIN2890		WASHER	0.42
0000	CCMMIN2990		COMPLETE STEAM WAND 95 SERIES	21.92
0000	CCMMIN3010		LONG STEAM WAND	23.84
0000	CCMMIN3110		STEAM WAND TIP	2.98
0000	CCMMOL0020		SPRING	0.86
0000	CCMMOL0030		SPRING	0.92
0000	CCMMOL0080		SPRING	1.15
0000	CCMSTA0150		STAINLESS STEEL WASHER	0.64
0000	CCMSTA0160		WASHER	0.78
0000	CCMSTA0180		BOWL	0.78
0000	CMPSTA0040		(HANDLE- STEAM/WATER)	2.48
0000	CMPSTA0760		ANTIBURNING SHEAT	1.35

# Steam and water valve 95

Pos.	Code	Colour	Description	Price (€)
0000	CPCRON0250		WASHER	0.32
0000	CTSGUA0110		SEAL	1.08
0000	CTSGUA0150		SEAL	0.78
0000	CTSGUA0270		GASKET	0.40
0000	CTSGUA0300		SEAL	0.98
0000	CTSGUA0410		SLEEVE	1.84

# Sight glass unit,cup,warmer and details of gas apparatus 95



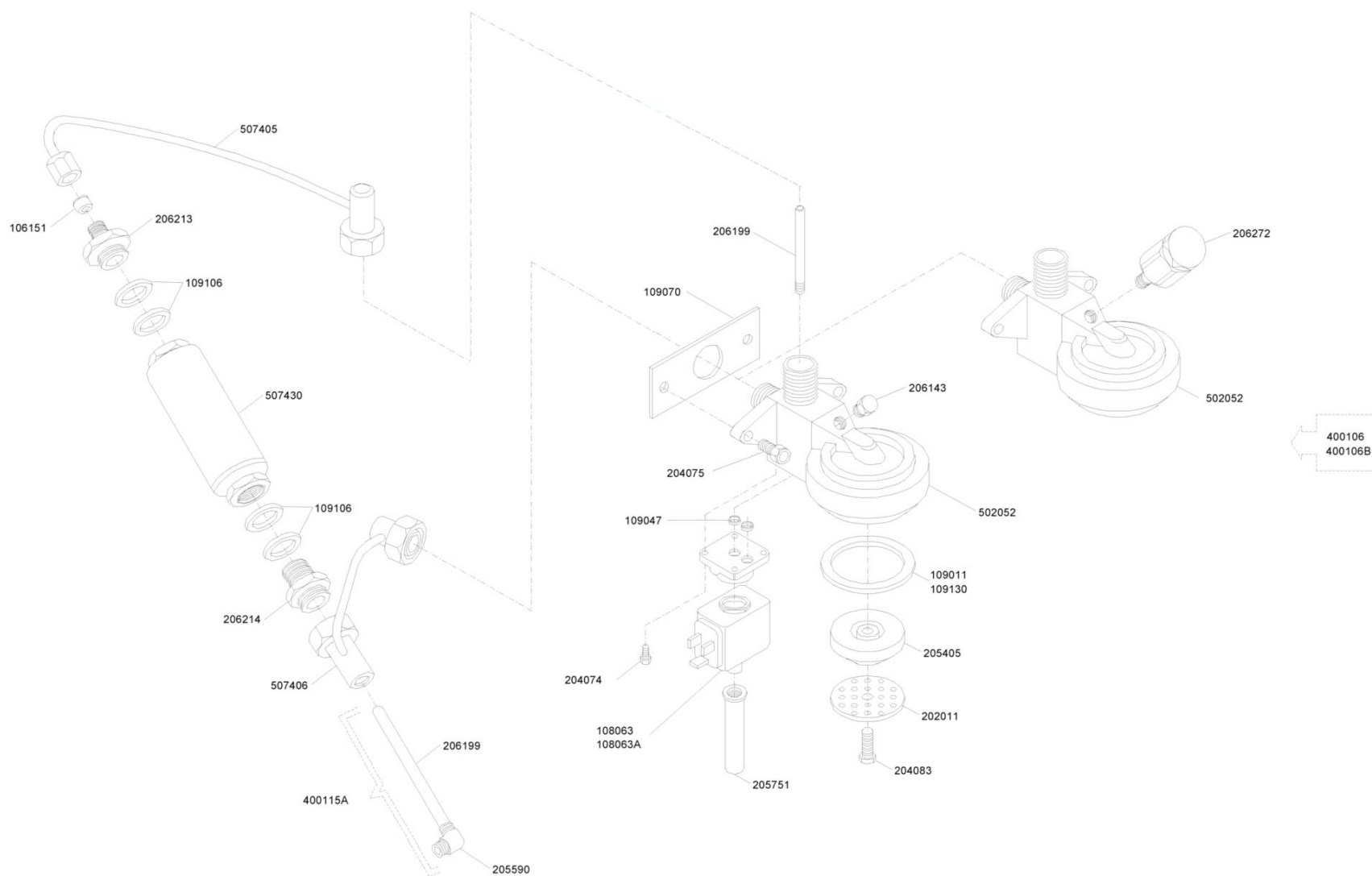

 La San Marco S.p.A.  
 Fabbrica Macchine per Caffè Espresso  
 34072 Gradisca d'Isonzo (GO) Italia  
<http://www.lasanmarco.com>

## Sight glass unit,cup,warmers and details of gas apparatus 95

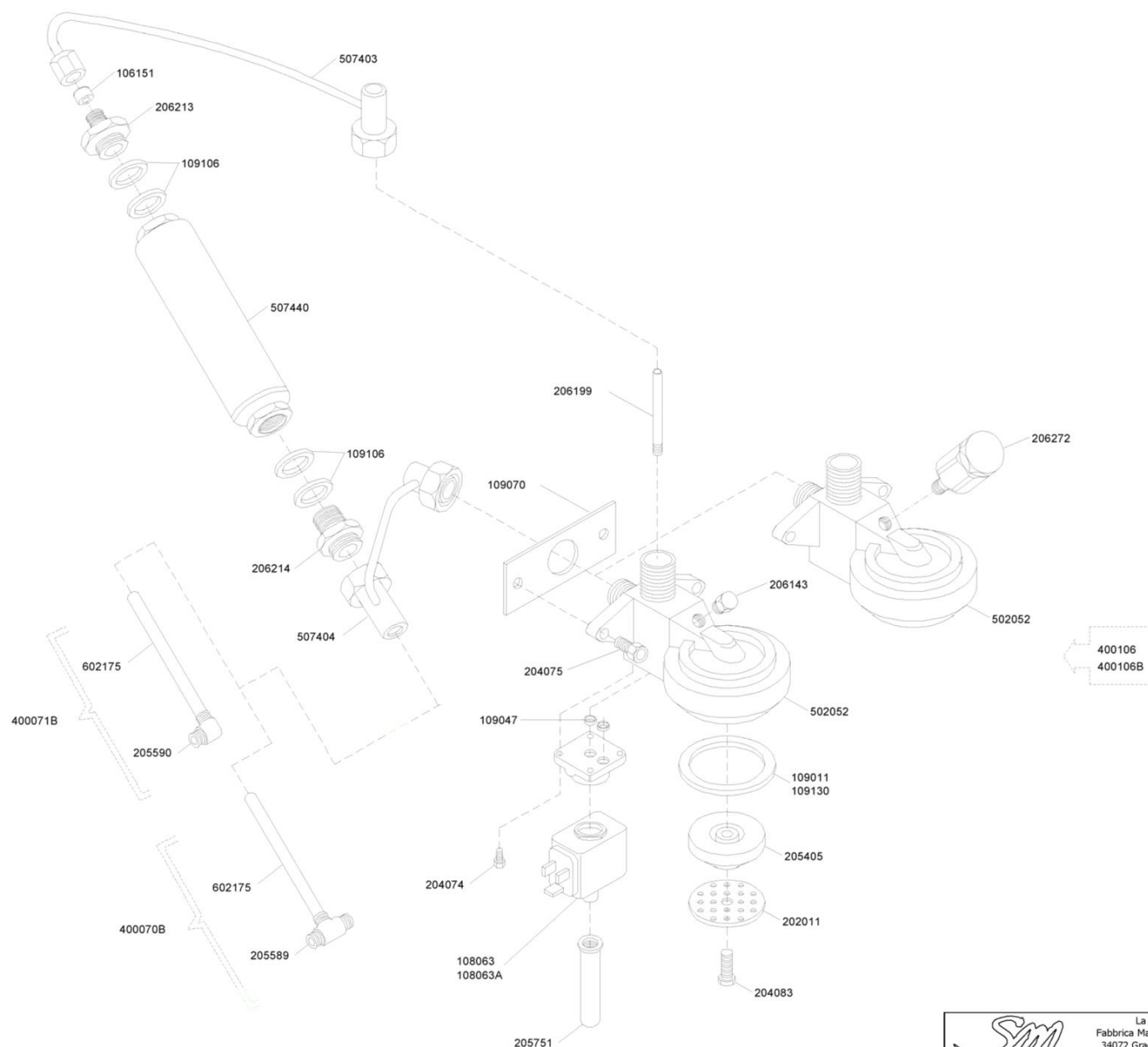
Pos.	Code	Colour	Description	Price (€)
0000				
0000	BFSUP0250		Support- burner-2 gr.	3.72
0000	BFSUP0260		SUPPORT BURNER	3.72
0000	BFSUP0870		HEAT-ELEMENT RETAINER	4.51
0000	BFSUP0930		Cup warmer support 95	3.29
0000	BIBRU0010		Complete 2 group burner	53.01
0000	BIBRU0020		COMPLETE BURNER 3 GR	57.12
0000	BIBRU0030		Complete 4 group burner	60.45
0000	BRTUB2660		SAFETY TUBE - GAS	7.92
0000	BVASS0060		BOLT	7.49
0000	BVASS0900		GAS DEVICE	296.41
0000	BVASS0910		GAS DEVICE	307.34
0000	BVASS1280		LOWER LEVEL	19.81
0000	BVASS1300		TUBE	21.70
0000	BVASS1500		LEVEL-COMPLETE	72.08
0000	BVASS1510		LEVEL COMPLETE	73.95
0000	BVASS2030		Sight glass -upper part 85/95-2/3 gr.	17.92
0000	BVASS2060		SIGH GLASS TOP	17.92
0000	BVKIT0250		KIT - CUPWARMER	44.50
0000	BVKIT0260		CUP WARMER KIT	54.49
0000	BVKIT0270		Complete cup warmer kit 95-4 gr.	100.60
0000	CCECAB1680		CUP-WARMER-WIRE-ASSEMBLY	18.26
0000	CCECAV0010		CONNECTION CABLE-PIEZOELECTRIC	2.73
0000	CCEINT0140		SWITCH - CUP WARMER	2.63
0000	CCERES0270		HEAT-ELEMENT	22.49
0000	CCERES0560		Heat element -cup warmer 3 gr. 125 W	32.47
0000	CCERES0570		HEAT ELEMENT FOR CUP WARMER	79.64
0000	CCEVAR0060		PIEZOELECTRIC IGNITION	16.18
0000	CCEVAR0070		PIEZOELECTRIC IGNITION PLUG	14.93
0000	CCMMIN0380		Bushing 2/3/4 gr.	4.32
0000	CCMMIN0610		Nozzle holding body M6	16.35
0000	CCMMIN0680		NUT	1.30
0000	CCMMIN0740		NUT	1.76
0000	CCMMIN0830		NUT	0.55

## Sight glass unit,cup,warmers and details of gas apparatus 95

Pos.	Code	Colour	Description	Price (€)
0000	CCMMIN0910		NUT FOR PIEZOEL. IGNITION PLUG	0.50
0000	CCMMIN1030		NUT	0.70
0000	CCMMIN1370		Air adjusting ring	6.34
0000	CCMMIN1500		STEAM GIGLEUR	1.94
0000	CCMMIN1620		NIPPLE	1.89
0000	CCMMIN1760		NIPPLE	2.38
0000	CCMMIN1840		BLIND PLUG FOR TUBE	0.84
0000	CCMMIN2610		GAS-JOINT	1.04
0000	CCMMIN2890		WASHER	0.42
0000	CCMMIN3590		SIGHT GLASS	8.80
0000	CMPSTA0420		BUTTON SUPPORT	1.50
0000	CMPSTA0430		SECURITY GAS BUTTON SUPPORT	2.28
0000	CMPSTA0730		GAS COCK HANDLE	1.64
0000	CPCBEC0070		GPL GAS NOZZLE	1.46
0000	CPCBEC0080		NOZZLE	1.46
0000	CPCBEC0090		Nozzle GPL 0,65 M6	1.46
0000	CPCBEC0100		Nozzle methane 0,60 M6	1.46
0000	CPCBEC0110		Nozzle methane 0,81 M6	1.46
0000	CPCBEC0120		NOZZLE METHANE	1.46
0000	CPCDAD0150		NUT	0.21
0000	CPCRON0220		External stainless steel washer	0.16
0000	CPCVIT0320		SELF TAPPING SCREW	0.40
0000	CPCVIT0640		Stainless steel screw M5X20 UNI 5961-67 TCCE	0.19
0000	CSCRUB0010		(GAS VALVE BUSHING)	0.23
0000	CSCRUB0020		VALVE GAS COCK FIXING NUT	1.06
0000	CSCRUB0030		FIXING NUT	0.55
0000	CSCRUB0040		Automatic gas adjuster	61.36
0000	CSCRUB0050		GAS-TAP	27.77
0000	CSCTER0150		Thermocouple int. + thermostat 140°	30.34
0000	CTSGUA0070		GASKET	0.86
0000	CTSGUA0290		GASKET	0.32



Pos.	Code	Colour	Description	Price (€)
0000	BOFUS0590		GROUP HEAD	114.02
0000	BRSTA0040		HEAT EXCHANGE	43.54
0000	BRTUB1420		LOWER CIRCULATION PIPE-WELDED	22.79
0000	BRTUB1440		UPPER CIRCULATION PIPE-WELDED	19.95
0000	BVASS1010		T1 COMPLETE GROUP	235.57
0000	BVASS1020		COMPLETE T1 GROUPHEAD	256.59
0000	BVASS1670		COMPLETE INJECTOR	8.86
0000	CCEELE0070		3 WAY SOLENOID	43.50
0000	CCEELE0150		ELECTROVALVE 110	52.34
0000	CCMFIL0040		screen	2.12
0000	CCMMIN1530		INFUSOR	15.20
0000	CCMMIN2140		GUTTER HOLDING PISTON	11.34
0000	CCMMIN2370		"L" INIECTOR CONNECTION	4.83
0000	CCMMIN2540		LOWER CONNECTION INJECTOR	5.67
0000	CCMMIN2630		UPPER CIRCULATION CONNECTION	6.15
0000	CCMMIN2790		GROUP EXHAUST	8.80
0000	CCMMIN3500		BLIND PLUG	1.45
0000	CMPTOR0020		NUT	1.20
0000	CMPTOR0130		CIRCULATION INJECTOR PIPE	2.33
0000	CPCVIT0120		SCREW	0.36
0000	CPCVIT0400		SCREW	0.50
0000	CPCVIT0470		SCREW	0.34
0000	CTSGUA0030		undercup screen	1.38
0000	CTSGUA0230		SEAL	1.94
0000	CTSGUA0380		GASKET	0.50
0000	CTSGUA0430		UNDERCUP SEAL	2.75
0000	CTSORI0040		SEAL	0.64



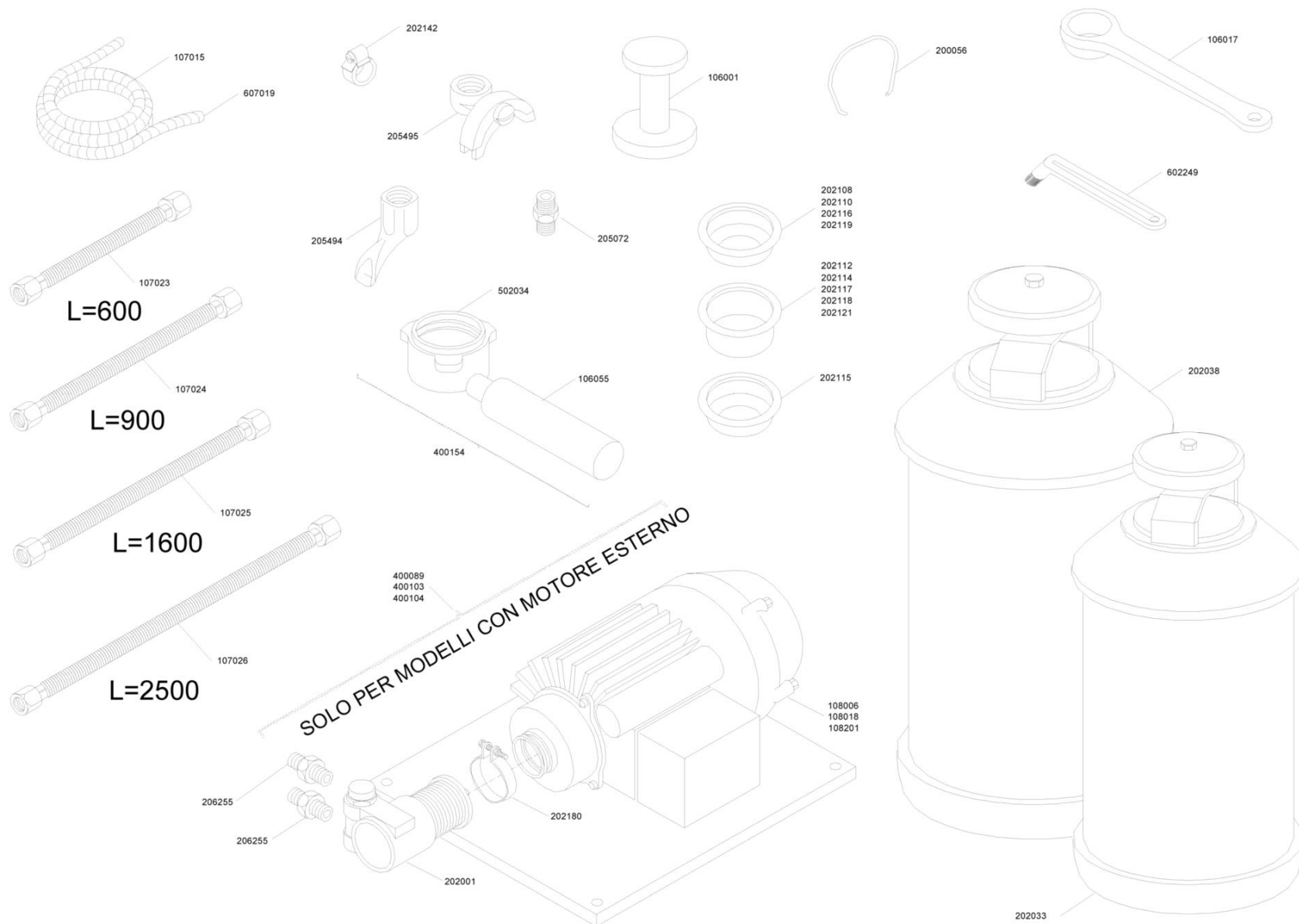


Pos.	Code	Colour	Description	Price (€)
0000	BOFUS0590		GROUP HEAD	114.02
0000	BRSTA0050		HEAT EXCHANGER	43.54
0000	BRTUB1370		LOWER CIRCULATION PIPE-WELDED	22.88
0000	BRTUB1430		UPPER CIRCULATION PIPE-WELDED	20.47
0000	BVASS1010		T1 COMPLETE GROUP	235.57
0000	BVASS1020		COMPLETE T1 GROUPHEAD	256.59
0000	BVASS1320		COMPLETE"L" INJECTOR	9.38
0000	BVASS1330		"T" INJECTOR	10.80
0000	CCEELE0070		3 WAY SOLENOID	43.50
0000	CCEELE0150		ELECTROVALVE 110	52.34
0000	CCMFIL0040		screen	2.12
0000	CCMMIN1530		INFUSOR	15.20
0000	CCMMIN2140		GUTTER HOLDING PISTON	11.34
0000	CCMMIN2370		"L" INJECTOR CONNECTION	4.83
0000	CCMMIN2390		"T" INJECTOR CONNECTION	6.40
0000	CCMMIN2540		LOWER CONNECTION INJECTOR	5.67
0000	CCMMIN2630		UPPER CIRCULATION CONNECTION	6.15
0000	CCMMIN2790		GROUP EXHAUST	8.80
0000	CCMMIN3500		BLIND PLUG	1.45
0000	CMPTOR0020		NUT	1.20
0000	CMPTOR0070		CIRCULATION INJECTOR PIPE L=185MM	2.84
0000	CMPTOR0130		CIRCULATION INJECTOR PIPE	2.33
0000	CPCVIT0120		SCREW	0.36
0000	CPCVIT0400		SCREW	0.50
0000	CPCVIT0470		SCREW	0.34
0000	CTSGUA0030		undercup screen	1.38
0000	CTSGUA0230		SEAL	1.94
0000	CTSGUA0380		GASKET	0.50
0000	CTSGUA0430		UNDERCUP SEAL	2.75
0000	CTSORI0040		SEAL	0.64



Pos.	Code	Colour	Description	Price (€)
0000				
0000	BOFUS0610		T1 GROUP	152.83
0000	BRSTA0010		EXCHANGER	43.54
0000	BRTUB1410		PIPE	22.25
0000	BRTUB1430		UPPER CIRCULATION PIPE-WELDED	20.47
0000	BVASS1310		INJECTOR	7.35
0000	BVKIT0310		TRANSFORMATION KIT O-RING	23.20
0000	CCEELE0070		3 WAY SOLENOID	43.50
0000	CCEELE0150		ELECTROVALVE 110	52.34
0000	CCMFIL0040		screen	2.12
0000	CCMMIN0260		WASHER	0.48
0000	CCMMIN1530		INFUSOR	15.20
0000	CCMMIN2140		GUTTER HOLDING PISTON	11.34
0000	CCMMIN2540		LOWER CONNECTION INJECTOR	5.67
0000	CCMMIN2600		CONNECTION FOR COOLED GROUP	4.82
0000	CCMMIN2630		UPPER CIRCULATION CONNECTION	6.15
0000	CCMMIN2710		REDUCTION	4.59
0000	CCMMIN2790		GROUP EXHAUST	8.80
0000	CCMMIN2920		INOX SLEEVE	2.48
0000	CMPTOR0060		INJECTOR-PIPE	2.45
0000	CMPTOR0130		CIRCULATION INJECTOR PIPE	2.33
0000	CPCRAC0480		"L" CONNECTION	4.16
0000	CPCVIT0120		SCREW	0.36
0000	CPCVIT0400		SCREW	0.50
0000	CPCVIT0470		SCREW	0.34
0000	CTSGUA0030		undercup screen	1.38
0000	CTSGUA0230		SEAL	1.94
0000	CTSGUA0380		GASKET	0.50
0000	CTSGUA0390		WASHER	2.99
0000	CTSGUA0430		UNDERCUP SEAL	2.75
0000	CTSORI0040		SEAL	0.64
0000	CTSORI0080		GASKET	1.23
0000	CTSORI0090		GASKET	0.92

## Connections and accessories



**SM**  
 La San Marco S.p.A.  
 Fabbrica Macchine per Caffè Espresso  
 34072 Gradisca d'Isonzo (GO) Italia  
<http://www.lasanmarco.com>

# Connections and accessories

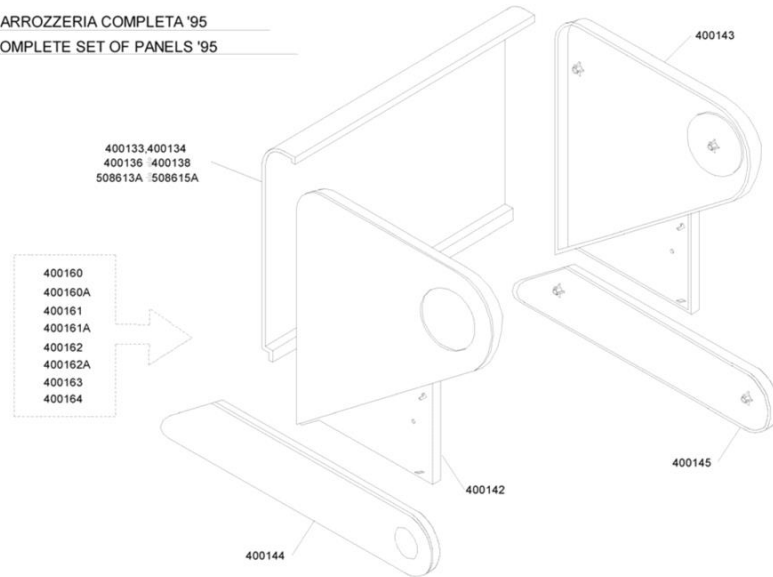
Pos.	Code	Colour	Description	Price (€)
0000	BOFUS0470		FILTER HOLDING CUP	33.61
0000	BPTUB0420		EXHAUST RUBBER HOSE	8.37
0000	BVASS0630		COMPLETE CUP	43.21
0000	BVASS1640		PUMP + ENGINE	345.41
0000	BVASS1650		PUMP AND MOTOR	341.23
0000	BVASS1660		PUMP + ENGINE	351.30
0000	BVASS2440		BRUSH	4.21
0000	CCEMOT0010		ENGINE FOR PUMP	176.76
0000	CCEMOT0040		(ENGINE FOR PUMP 230V)	172.57
0000	CCEMOT0060		ENGINE FOR PUMP	182.67
0000	CCMFIL0060		FILTER 12 GR	3.77
0000	CCMFIL0070		14 GRAM FILTER	3.77
0000	CCMFIL0080		FILTER 16G	3.77
0000	CCMFIL0090		FILTER 18 GR LEVA	3.94
0000	CCMFIL0110		FILTER 21 GR.	5.61
0000	CCMFIL0120		FILTER 6 GR	3.77
0000	CCMFIL0130		FILTER 7G	3.77
0000	CCMFIL0140		FILTER 8 GRM	3.77
0000	CCMFIL0150		9 GR FILTER	3.77
0000	CCMFIL0200		15BLIND FILTER BASKET	2.40
0000	CCMMIN1650		HOSE CONNECTOR	2.49
0000	CCMMIN1720		NIPPLE	2.99
0000	CCMMOL0100		FILTER BASKET CLIP	0.86
0000	CMPSTA0150		BACKELITE HANDLE	6.60
0000	CPCBEC0050		SINGLE SPOUT	5.93
0000	CPCBEC0060		DOUBLE SPOUT	8.51
0000	CPCFAS0080		RING-CLAMP	1.45
0000	CPCFAS0090		HOSE FOR ENGINE	4.16
0000	CPCPLA0210		Hand tamper	3.56
0000	CPCPLA0230		108400	1.08
0000	CPCTGO0020		SUPPLY RUBBER HOSE IN METERS	5.58
0000	CPCTGO0040		HOSE FLEX	6.33
0000	CPCTGO0060		STAINLESS STEEL PLAITED RUBBER HOSE	7.63
0000	CPCTGO0080		HOSE FLEX	10.81

## Connections and accessories

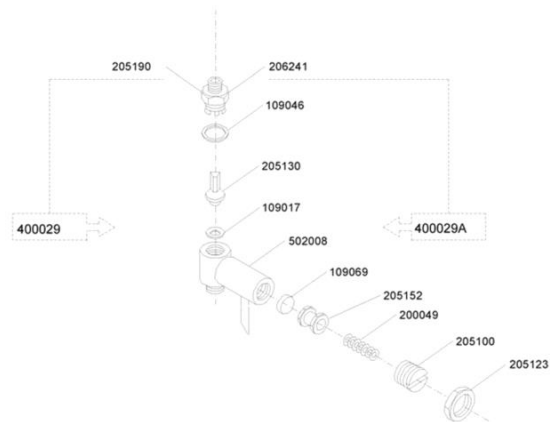
Pos.	Code	Colour	Description	Price (€)
0000	CPCTGO0100		HOSE FLEX	16.95
0000	CSCADD0050		WATER SOFTENER 12 LITRES	137.00
0000	CSCADD0060		WATER SOFTENER 8 LITRES	118.00
0000	CSCPOM0090		(VOLUMETRIC PUMP)	131.23

# ASSEMBLY: Complete set of panels, complete supply button 95, complete no return

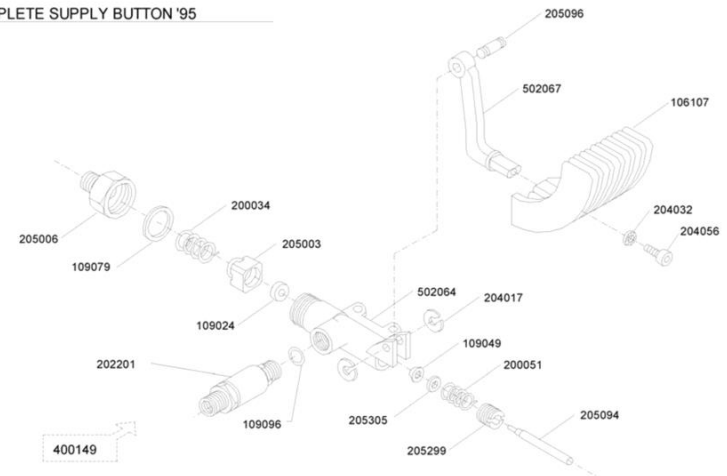
CARROZZERIA COMPLETA '95  
COMPLETE SET OF PANELS '95



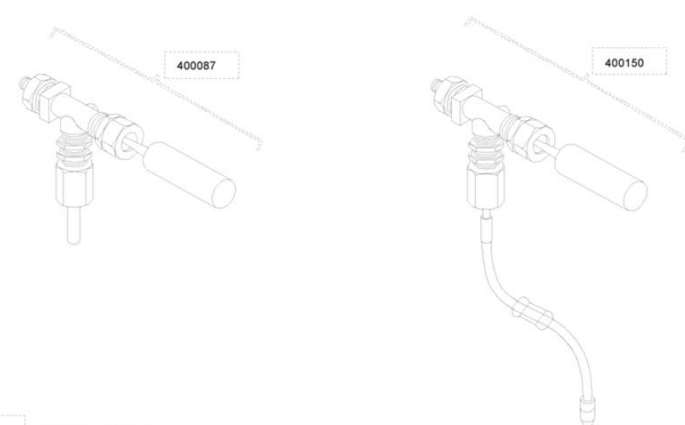
VALVOLA DI RITEGNO COMPLETA  
COMPLETE NO-RETURN VALVE



PULSANTE ALIMENTAZIONE COMPLETO '95  
COMPLETE SUPPLY BUTTON '95



RUBINETTI ACQUA-VAPORE COMPLETI  
COMPLETE WATER-STEAM VALVES



N.B.:

CODICE = CODICE ASSIEME

CODE = ASSEMBLY CODE

 La San Marco S.p.A.  
Fabbrica Macchine per Caffè Espresso  
34072 Gradisca d'Isonzo (GO) Italia  
<http://www.lasanmarco.com>

**ASSEMBLY:Complete set of panels,complete supply button 95,complete no return**

Pos.	Code	Colour	Description	Price (€)
0000				
0000	BFFRO0370		FRONT PANEL	66.49
0000	BFFRO0390		FRONT PANEL	88.85
0000	BFFRO0400		FRONT PANEL	56.53
0000	BFFRO0410		FRONT PANEL	63.63
0000	BFFRO0420		FRONT PANEL	74.40
0000	BFFRO0440		FRONT PANEL	182.25
0000	BOFUS0150		VALVE BODY	14.89
0000	BOFUS0200		VALVE BODY	26.73
0000	BOFUS0710		BUTTON LEVER	6.91
0000	BPSTA0250		SIDE PANEL -RIGHT	39.61
0000	BPSTA0260		SMALL SIDE PANEL-RIGHT	23.08
0000	BPSTA0270		SMALL SIDE PANEL-LEFT	23.08
0000	BPSTA0280		SIDE PANEL-LEFT	39.61
0000	BVASS0360		COMPLETE SET OF PANNELS	192.38
0000	BVASS0370		GREY	204.08
0000	BVASS0380		COMPLETE SET OF PANELS	182.43
0000	BVASS0390		COMPLETE SET OF PANELS	189.52
0000	BVASS1720		COMPLETE BUTTON	80.89
0000	BVASS1820		COMPLETE WATER TAP	103.47
0000	BVASS1910		COMPLETE STEAM VALVE	98.19
0000	BVASS2280		COMPLETE VALVE	37.81
0000	BVASS2290		NO RETURN VALVE	37.89
0000	CCMMIN0110		STAINSLESS STEEL PIN	1.73
0000	CCMMIN1020		STEAM NUT	1.36
0000	CCMMIN1280		BLOCKING RING	1.30
0000	CCMMIN1380		BLOCKING RING	1.89
0000	CCMMIN1780		NIPPLE	3.51
0000	CCMMIN1800		NIPPLE	3.61
0000	CCMMIN1950		PIN FOR HANDLE	1.80
0000	CCMMIN2070		HOLDING PISTON	1.67
0000	CCMMIN2170		PISTON	1.94
0000	CCMMIN2200		NO RETURN VALVE PISTON	1.64
0000	CCMMIN2700		REDUCTION	4.32



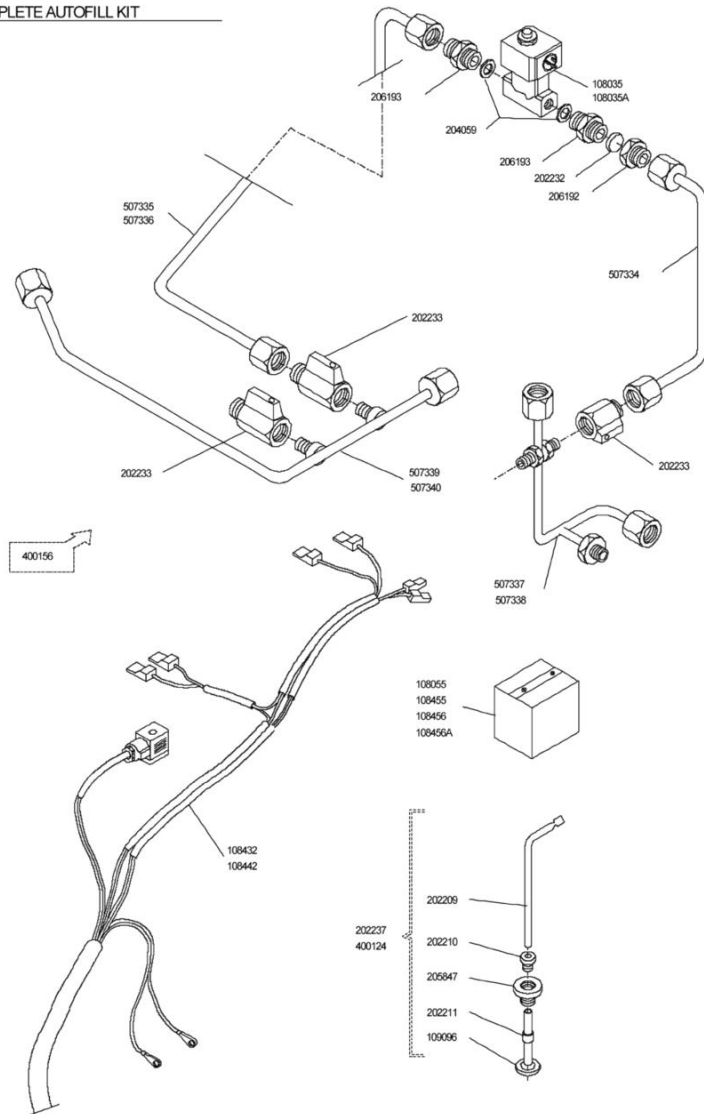
**ASSEMBLY:Complete set of panels,complete supply button 95,complete no return**

Pos.	Code	Colour	Description	Price (€)
0000	CCMMIN2870		GROMMET	0.48
0000	CCMMOL0040		SPRING	1.50
0000	CCMMOL0070		SPRING	0.86
0000	CCMMOL0080		SPRING	1.15
0000	CMPSTA0350		HANDLE	2.82
0000	CPCRON0050		SEEGER RING	0.17
0000	CPCRON0130		GROMMET	0.21
0000	CPCVAL0030		CHECK VALVE	11.60
0000	CPCVIT0100		SCREW	0.23
0000	CTSGUA0110		SEAL	1.08
0000	CTSGUA0150		SEAL	0.78
0000	CTSGUA0210		SEAL	1.08
0000	CTSGUA0270		GASKET	0.40
0000	CTSGUA0320		SEAL	0.69
0000	CTSORI0010		SEAL O-RING	0.40
0000	CTSORI0030		SEAL O-RING	0.34

# ASSEMBLY: Complete autofill kit, complete sight glass unit, complete gas device.

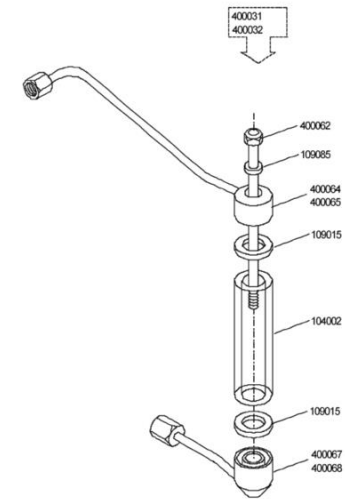
KIT AUTOLIVELLO COMPLETO

COMPLETE AUTOFILL KIT



LIVELLO COMPLETO

COMPLETE SIGHT GLASS UNIT



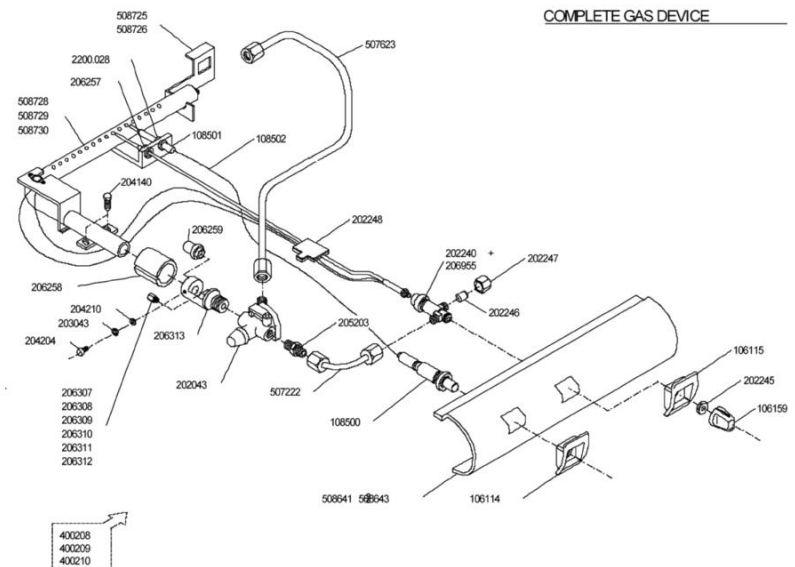
NB:

CODICE = CODICE ASSIEME

CODE = ASSEMBLY CODE

DISPOSITIVO GAS 95 COMPLETO

COMPLETE GAS DEVICE



 La San Marco S.p.A.  
Fabbrica Macchine per Caffè Espresso  
34072 Gradisca d'Isonzo (GO) Italia  
<http://www.lasanmarco.com>

**ASSEMBLY:Complete autofill kit,complete sight glass unit,complete gas device.**

Pos.	Code	Colour	Description	Price (€)
0000				
0000	BFSUP0250		Support- burner-2 gr.	3.72
0000	BFSUP0260		SUPPORT BURNER	3.72
0000	BIBAS0520		FLAT	31.71
0000	BIBAS0620		BASEMENT FOR GAS	48.87
0000	BIBRU0010		Complete 2 group burner	53.01
0000	BIBRU0020		COMPLETE BURNER 3 GR	57.12
0000	BIBRU0030		Complete 4 group burner	60.45
0000	BRTUB0630		PIPE	23.38
0000	BRTUB0780		FEED PIPE	23.42
0000	BRTUB1070		BOILER PIPE	8.37
0000	BRTUB1330		SUPPLY PIPE	30.09
0000	BRTUB1340		FEED PIPE	30.09
0000	BRTUB1630		AUTOFILL PIPE	8.24
0000	BRTUB2660		SAFETY TUBE - GAS	7.92
0000	BRTUB2950		AUTOFILL PIPE	9.44
0000	BRTUB2960		TUBE	9.80
0000	BVASS0060		BOLT	7.49
0000	BVASS0900		GAS DEVICE	296.41
0000	BVASS0910		GAS DEVICE	307.34
0000	BVASS1280		LOWER LEVEL	19.81
0000	BVASS1300		TUBE	21.70
0000	BVASS1500		LEVEL-COMPLETE	72.08
0000	BVASS1510		LEVEL COMPLETE	73.95
0000	BVASS2000		AUTOFILL COMPLETE PROBE	12.53
0000	BVASS2030		Sight glass -upper part 85/95-2/3 gr.	17.92
0000	BVASS2060		SIGH GLASS TOP	17.92
0000	BVKIT0020		AUTOFILL KIT	255.11
0000	CCECAB0480		AUTOFILL CABLE	24.40
0000	CCECAB0490		AUTOFILL-CABLE	28.93
0000	CCECAV0010		CONNECTION CABLE-PIEZOELECTRIC	2.73
0000	CCEELE0090		INLET SOLENOID	51.07
0000	CCEELE0140		ELECTROVALVE-AUTOFILL	51.07
0000	CCEVAR0060		PIEZOELECTRIC IGNITION	16.18

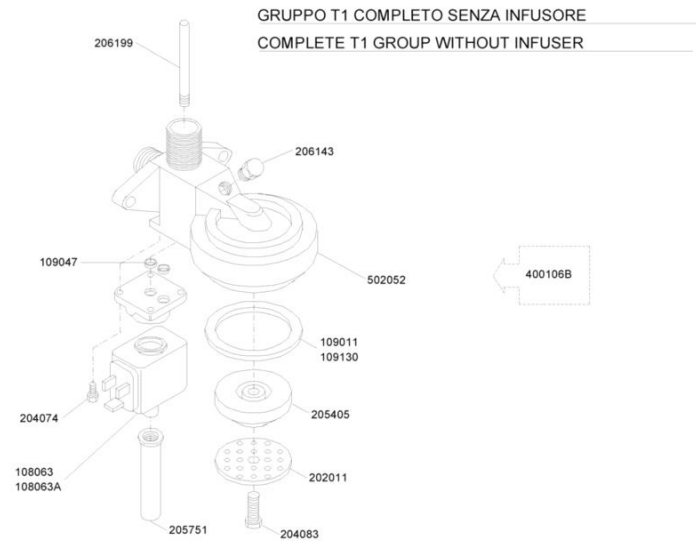
**ASSEMBLY:Complete autofill kit,complete sight glass unit,complete gas device.**

Pos.	Code	Colour	Description	Price (€)
0000	CCEVAR0070		PIEZOELECTRIC IGNITION PLUG	14.93
0000	CCICEN0040		AUTOLEVELLER TRIGGER BOX	88.25
0000	CCICEN0050		TRIGGER BOX	88.25
0000	CCICEN0080		AUTOFILL TRIGGER BOX	76.44
0000	CCMFIL0230		STAINLES STEEL FILTER	0.64
0000	CCMMIN0020		PROBE	2.61
0000	CCMMIN0030		AUTOFILL PROBE	14.69
0000	CCMMIN0380		Bushing 2/3/4 gr.	4.32
0000	CCMMIN0610		Nozzle holding body M6	16.35
0000	CCMMIN0830		NUT	0.55
0000	CCMMIN0910		NUT FOR PIEZOEL. IGNITION PLUG	0.50
0000	CCMMIN1260		FERRULE	2.33
0000	CCMMIN1370		Air adjusting ring	6.34
0000	CCMMIN1610		NIPPLE	2.28
0000	CCMMIN1620		NIPPLE	1.89
0000	CCMMIN2610		GAS-JOINT	1.04
0000	CCMMIN2730		RING	3.51
0000	CCMMIN3590		SIGHT GLASS	8.80
0000	CMPSTA0420		BUTTON SUPPORT	1.50
0000	CMPSTA0430		SECURITY GAS BUTTON SUPPORT	2.28
0000	CMPSTA0730		GAS COCK HANDLE	1.64
0000	CMPTOR0080		TEFLON INSULATOR	5.16
0000	CPCBEC0070		GPL GAS NOZZLE	1.46
0000	CPCBEC0080		NOZZLE	1.46
0000	CPCBEC0090		Nozzle GPL 0,65 M6	1.46
0000	CPCBEC0100		Nozzle methane 0,60 M6	1.46
0000	CPCBEC0110		Nozzle methane 0,81 M6	1.46
0000	CPCBEC0120		NOZZLE METHANE	1.46
0000	CPCDAD0150		NUT	0.21
0000	CPCRAC0140		RING	2.68
0000	CPCRON0220		External stainless steel washer	0.16
0000	CPCRON0250		WASHER	0.32
0000	CPCRUB0020		TAP	9.25
0000	CPCVIT0320		SELF TAPPING SCREW	0.40

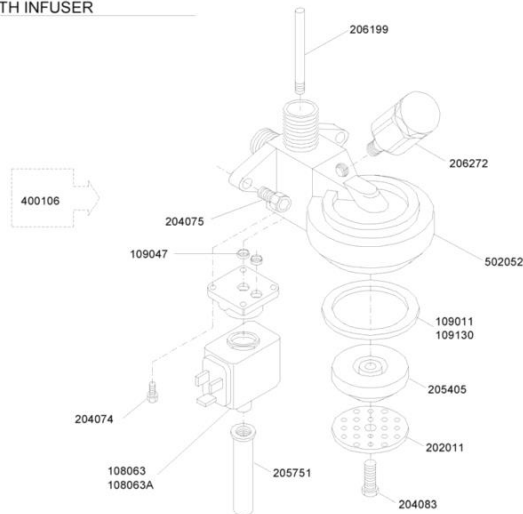
**ASSEMBLY:Complete autofill kit,complete sight glass unit,complete gas device.**

Pos.	Code	Colour	Description	Price (€)
0000	CPCVIT0640		Stainless steel screw M5X20 UNI 5961-67 TCCE	0.19
0000	CSCRUB0010		(GAS VALVE BUSHING)	0.23
0000	CSCRUB0020		VALVE GAS COCK FIXING NUT	1.06
0000	CSCRUB0030		FIXING NUT	0.55
0000	CSCRUB0040		Automatic gas adjuster	61.36
0000	CSCRUB0050		GAS-TAP	27.77
0000	CSCTER0150		Thermocouple int. + thermostat 140°	30.34
0000	CTSGUA0070		GASKET	0.86
0000	CTSGUA0290		GASKET	0.32
0000	CTSGUA0320		SEAL	0.69

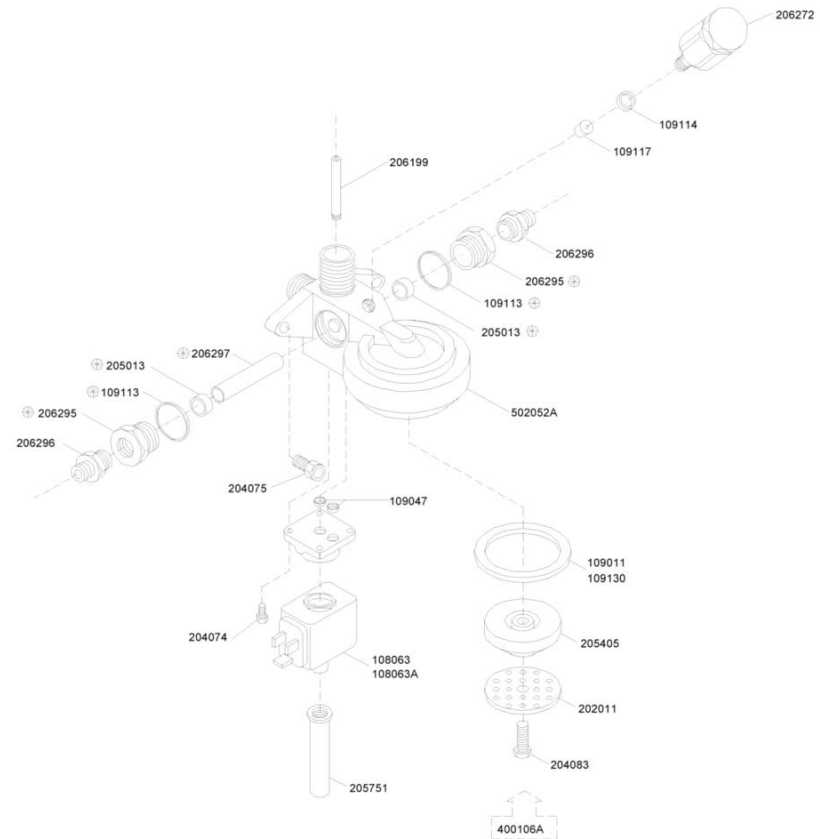
# ASSEMBLY: Complete T1 group without infuser, complete T1 group with



GRUPPO T1 COMPLETO CON INFUSORE  
COMPLETE T1 GROUP WITH INFUSER



GRUPPO T1 COMPLETO RAFFREDDATO  
COMPLETE T1 GROUP-COOLED



N.B.:

CODICE = CODICE ASSIEME

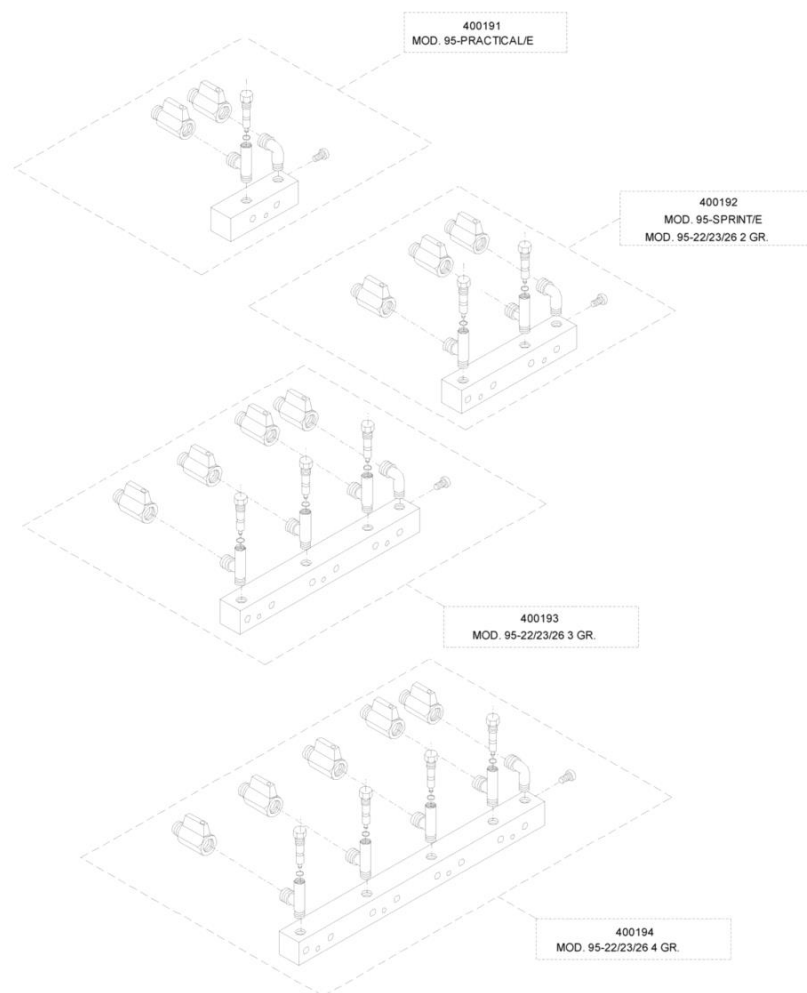
CODE = ASSEMBLY CODE



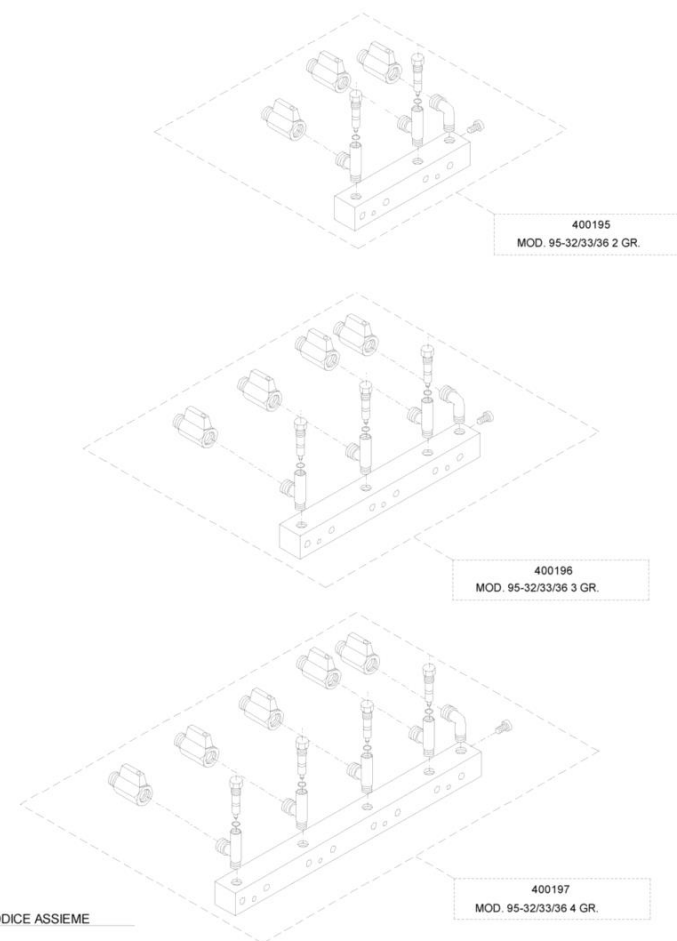
# ASSEMBLY:Complete T1 group without infuser, complete T1 group with

Pos.	Code	Colour	Description	Price (€)
0000				
0000	BOFUS0590		GROUP HEAD	114.02
0000	BVASS1010		T1 COMPLETE GROUP	235.57
0000	BVASS1020		COMPLETE T1 GROUPHEAD	256.59
0000	BVASS1040		GROUP T1 COMPLETE	326.53
0000	CCEELE0070		3 WAY SOLENOID	43.50
0000	CCEELE0150		ELECTROVALVE 110	52.34
0000	CCMFIL0040		screen	2.12
0000	CCMMIN0260		WASHER	0.48
0000	CCMMIN1530		INFUSOR	15.20
0000	CCMMIN2140		GUTTER HOLDING PISTON	11.34
0000	CCMMIN2600		CONNECTION FOR COOLED GROUP	4.82
0000	CCMMIN2710		REDUCTION	4.59
0000	CCMMIN2790		GROUP EXHAUST	8.80
0000	CCMMIN2920		INOX SLEEVE	2.48
0000	CCMMIN3500		BLIND PLUG	1.45
0000	CMPTOR0130		CIRCULATION INJECTOR PIPE	2.33
0000	CPCVIT0120		SCREW	0.36
0000	CPCVIT0400		SCREW	0.50
0000	CPCVIT0470		SCREW	0.34
0000	CTSGUA0030		undercup screen	1.38
0000	CTSGUA0390		WASHER	2.99
0000	CTSGUA0430		UNDERCUP SEAL	2.75
0000	CTSORI0040		SEAL	0.64
0000	CTSORI0080		GASKET	1.23
0000	CTSORI0090		GASKET	0.92

KIT MODIFICA GICLEUR SERIE 95/22/23/26  
MODIFYING KIT-GICLEUR SERIES 95/22/23/26



KIT MODIFICA GICLEUR SERIE 95/32/33/36  
MODIFYING KIT-GICLEUR SERIES 95/32/33/36



N.B.:

CODICE = CODICE ASSIEME

CODE = ASSEMBLY CODE

 La San Marco S.p.A.  
Fabbrica Macchine per Caffè Espresso  
34072 Gradisca d'Isonzo (GO) Italia  
<http://www.lasanmarco.com>



# Modifying kit-gicleur series 95

Pos.	Code	Colour	Description	Price (€)
0000				
0000	BVKIT0120		KIT	96.70
0000	BVKIT0130		CHANGE-KIT	65.93
0000	BVKIT0140		Modifying kit-gicleur 95-32-33-36 / 3 gr.	95.80
0000	BVKIT0150		CHANGES-KIT	66.61
0000	BVKIT0160		KIT FOR MODIFICATION GIGLEUR	42.54