

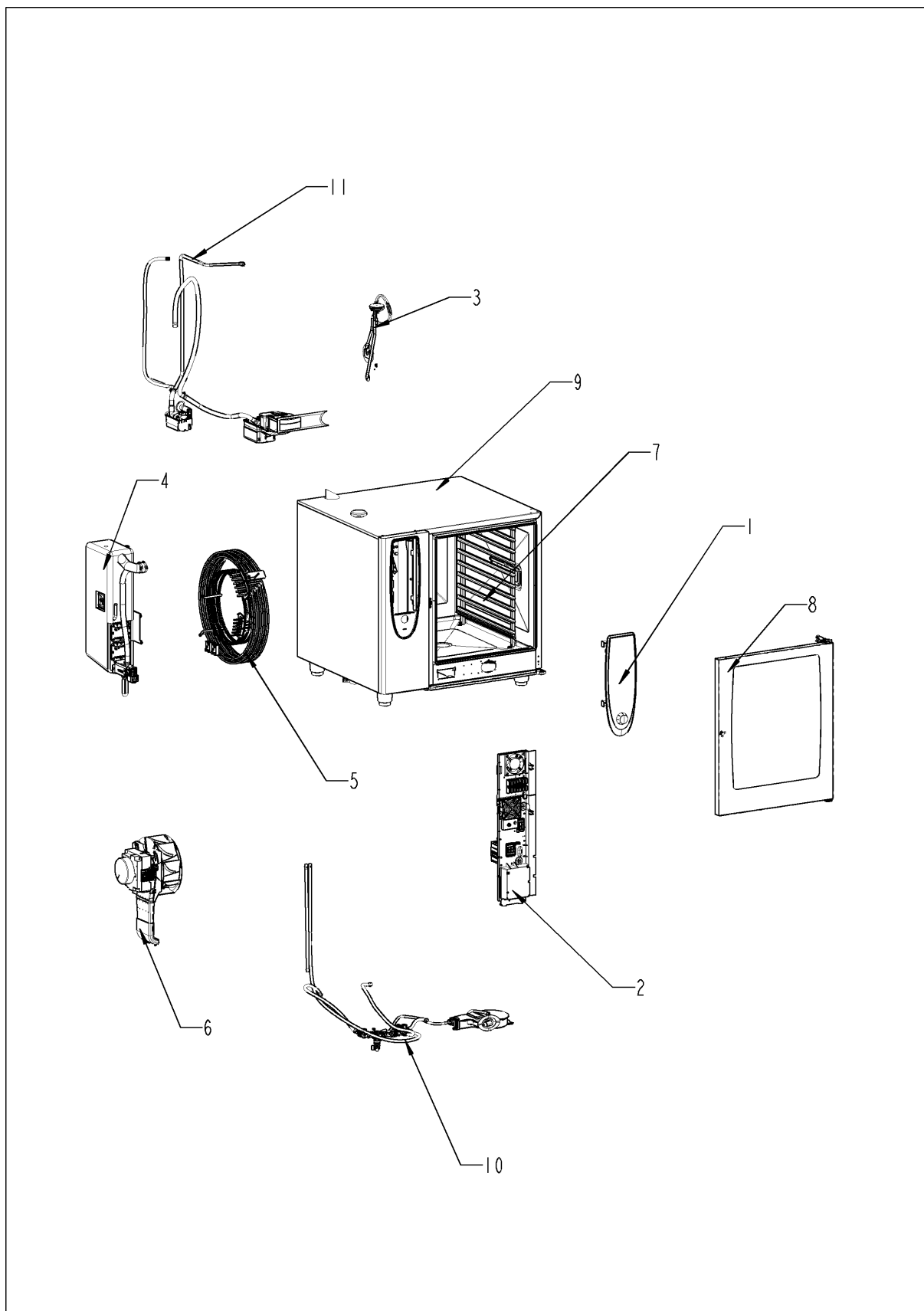
Service part catalogue

SelfCooking Center® Linie SelfCooking Center 102E

validity: 10/2008



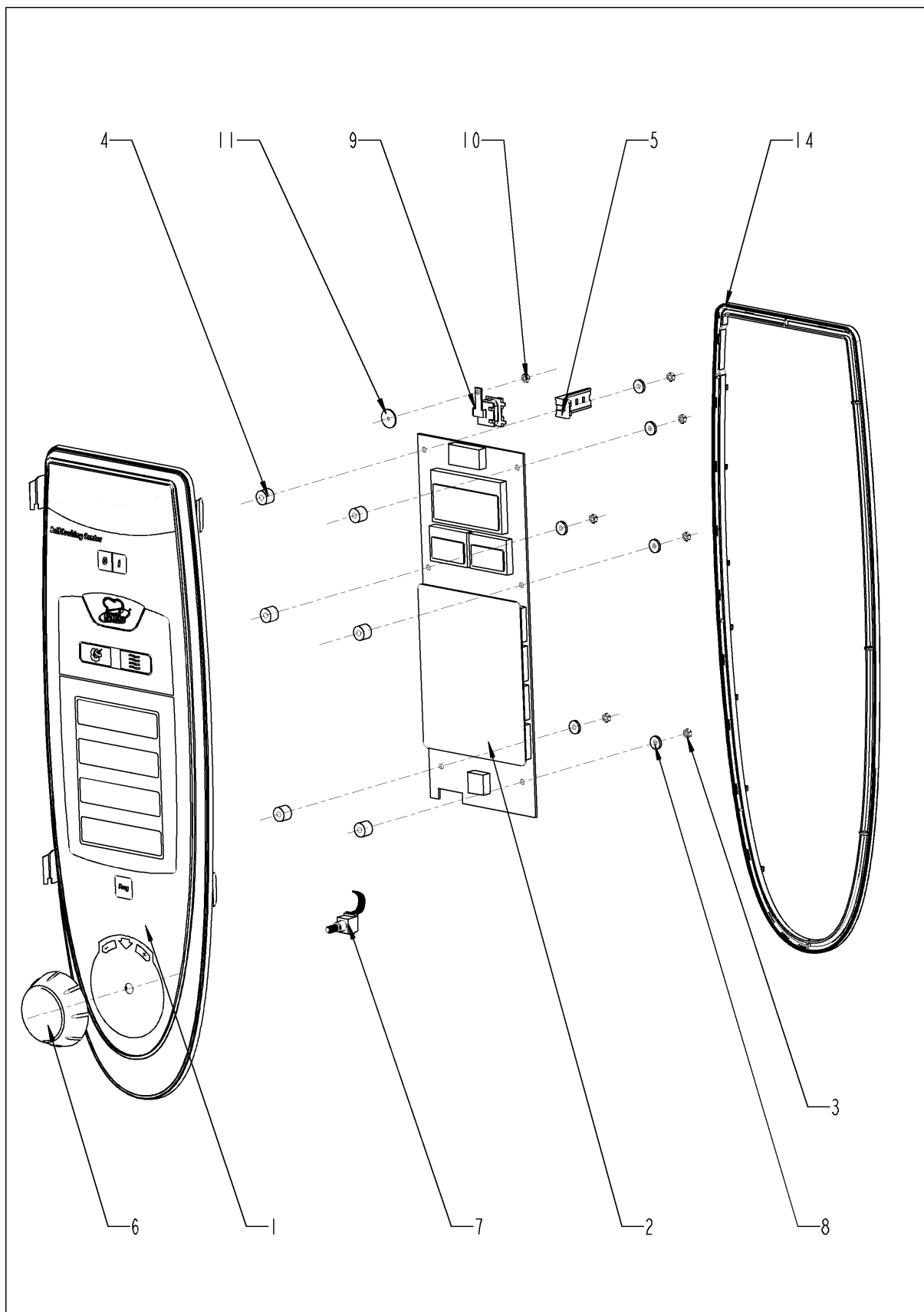
Overview



Overview

Pos.	Module	Page
1	Control panel	4
2	Electrical installation	6
3	ClimaPlus	10
4	Steam generator	12
5	Hot air heating	18
6	Motor and fan wheel	20
7	Interior cabinet	22
8	Door	26
9	Exterior cabinet	30
10	Water	34
11	CleanJet + Care	38
13	Miscellaneous	40

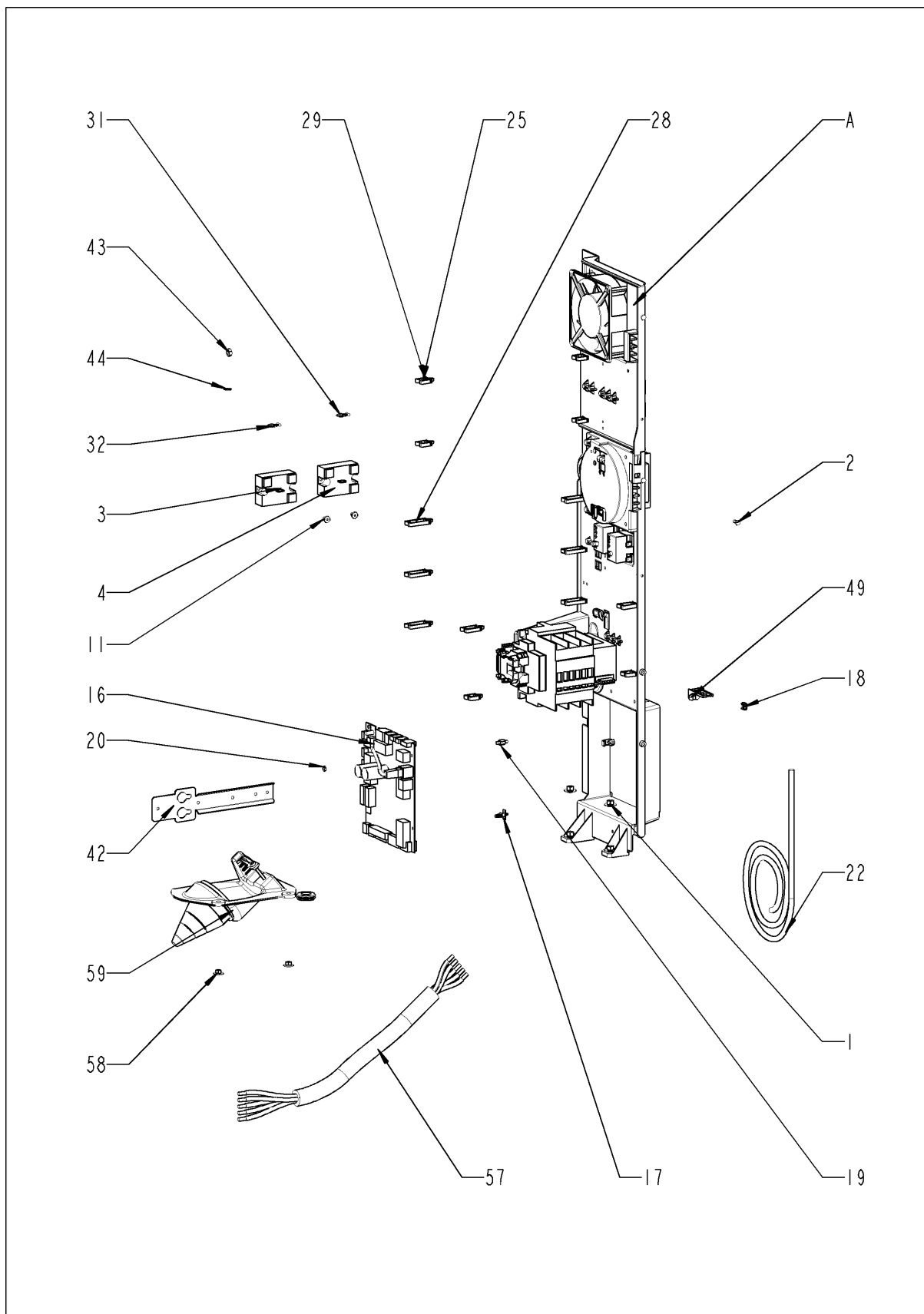
Control panel



Control panel

Pos.	Part No.	Description	Qty.
1	87.00.000	Control panel insert with overlay	1
2	42.00.002	Control pcb	1
3	10.00.916	Hex nut M4 w. locking	6
4	10.00.355	Spacer black	6
5	2020.0400	Fixing device for cable harness	1
6	16.00.232	Dial f. pulse generator blue	1
7	40.00.404	Pulse generator	1
9	40.02.087	Buzzer	1
10	1104.0121	Hex nut M4 self locking	1
11	5110.1029	Gasket mode switch	1
14	16.00.387	Mounting device f.sealing + sealing lip	1

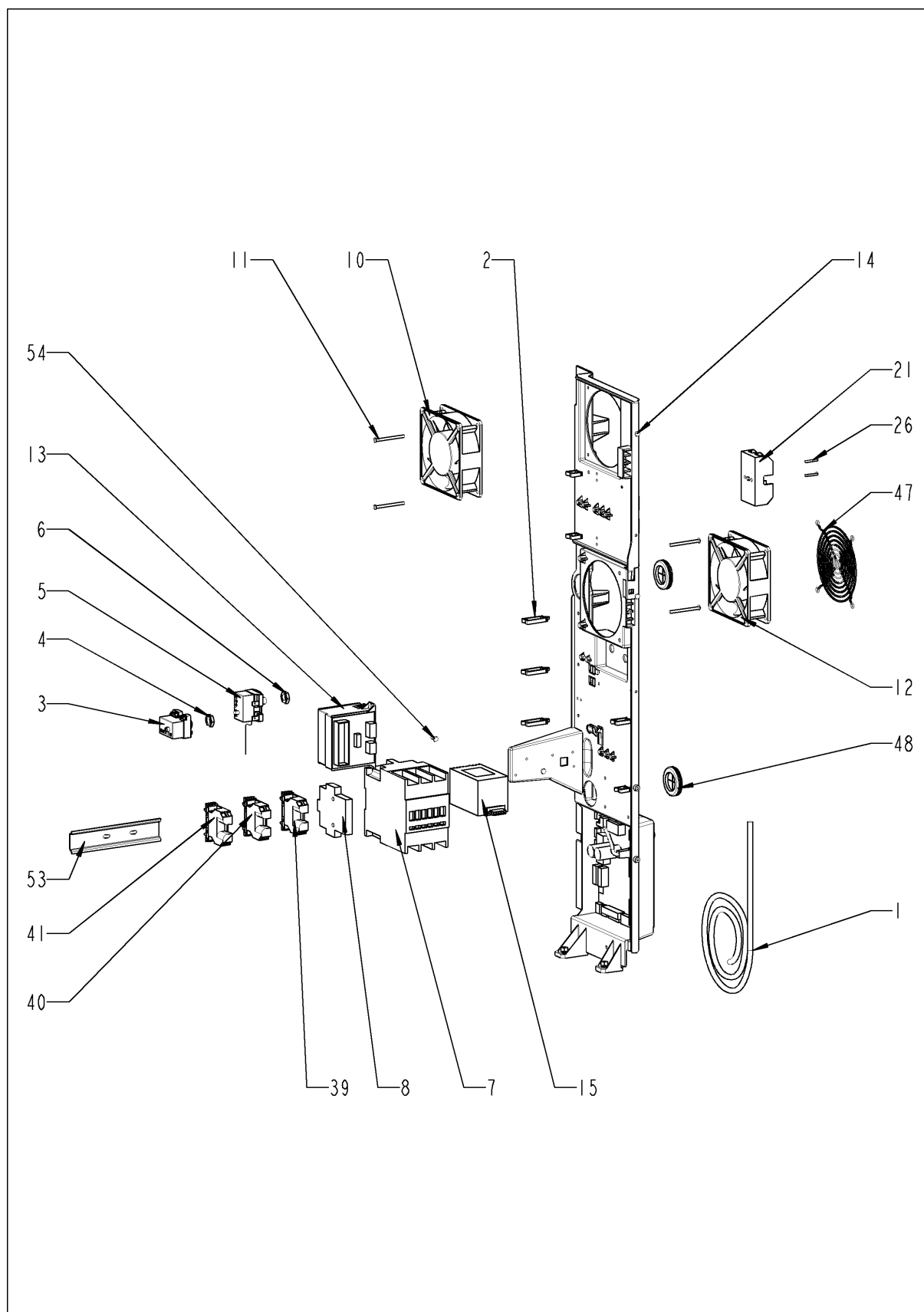
Electrical installation



Electrical installation

Pos.	Part No.	Description	Qty.
1	10.00.709	Hex nut M6 w. locking	2
2	10.00.239	EJOT PT-Screw Torx 4x10	5
3	40.00.453	Solid state relais	1
4	40.00.453	Solid state relais	1
11	10.00.507	Pan head screw Torx 5/16" T20	6
12	10.00.706	Oval head cap screw T20 M4x10	4
16	42.00.065	Relay-I/O pcb	1
17	40.00.417	Fixing clip f. pcb	1
18	1104.0801	Cage nut M4	1
19	10.00.243	Spacer M4x8	1
20	1104.0120	Hex nut M4	1
22	40.00.471	Bus cable 0.8m	1
25	10.00.112	Cable clip short	4
28	10.00.111	Cable clip long	1
28	10.00.111	Cable clip long	5
29	10.00.112	Cable clip short	2
31	10.00.471	Cable clip d10-12mm	3
32	10.00.471	Cable clip d10-12mm	3
43	1106.0160	Hex nut M6	1
44	1206.0120	Tooth lock washer A6,4	1
57	40.00.593	Power supply cable 5x10mm ²	1
58	1105.0121	Hex combination nut M5 galv	2
59	40.00.306	Cable entry	1
A		Electrical installation	1

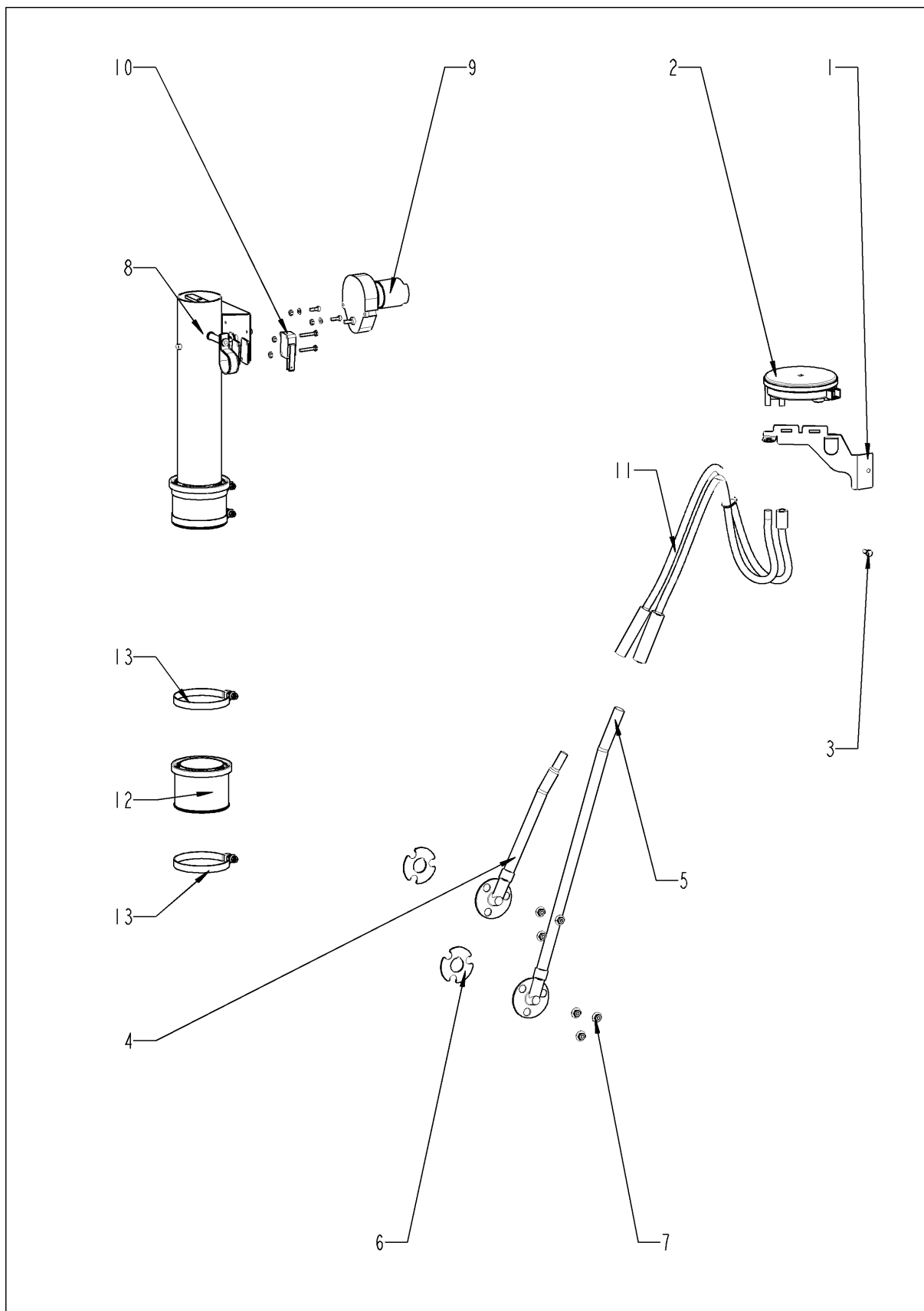
Electrical installation



Electrical installation

Pos.	Part No.	Description	Qty.
1	40.02.933	Cable control harness	1
2	10.00.111	Cable clip long	4
3	40.01.329	Dry up protector 183°	1
4	3014.0302	Hex nut M10 for dry-up protector	1
5	40.01.482	Safety temperature limiter 365°C	1
6	3014.0327	Hex nut M10x1,0	1
7	40.02.765	Contactor B&J K3-40B00 230	1
8	40.02.641	Auxilliary contact B&J HN10 N/O	1
10	3101.1008	Cooling fan	1
11	10.00.238	Screw Torx 4x50	4
12	3101.1008	Cooling fan	1
13	40.00.277	Control transformer	1
14	10.00.239	EJOT PT-Screw Torx 4x10	1
15	40.02.424	Electronic noise filter	1
21	40.02.512	Fuse holder 2x6.3A	1
26	10.00.240	Screw Torx 3x20	2
39	4001.1233	Terminal block yellow/green 35mm ²	1
40	4001.1252	Terminal block, blue 35 mm ²	1
41	4001.1206	Terminal block 35mm ² grey	1
47	2005.0106	Protective grid for cooling fan	1
48	4007.0620	Membrane DGC 29	2
53	40.02.428	Installation rail for Contactor	1
54	10.00.239	EJOT PT-Screw Torx 4x10	2

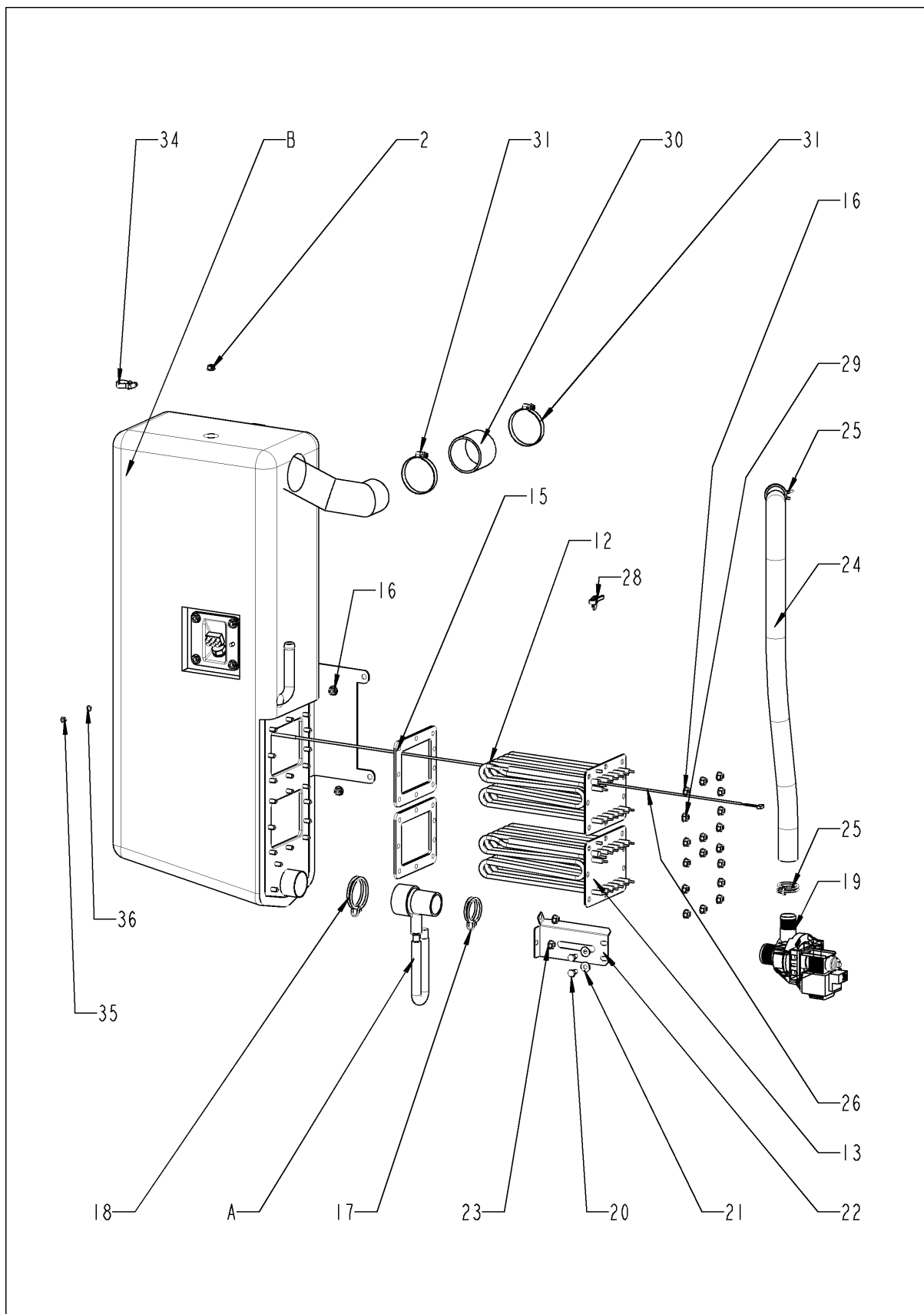
ClimaPlus



ClimaPlus

Pos.	Part No.	Description	Qty.
1	22.00.563	Mounting device f. pressure sensor	1
2	3017.1011	Pressure sensor for humidity control Huba 401	1
3	10.00.239	EJOT PT-Screw Torx 4x10	1
4	22.00.517	Inner humidity meas. Piece	1
5	22.00.200	Outer humidity meas. Piece	1
6	22.00.198	Gasket f. hum. meas. Pipe	2
7	1104.0122	Hex combination nut M4 galv	6
8	22.00.576	Humidity control cpl. with motor	1
9	3101.1010	Humidity control motor	1
10	3016.0102	Micro switch	1
11	22.00.525	Hose set f. humidity control	1
12	22.00.564	Gasket f. ventilation	1
13	2066.0504	Hose clamp 40-60mm	1

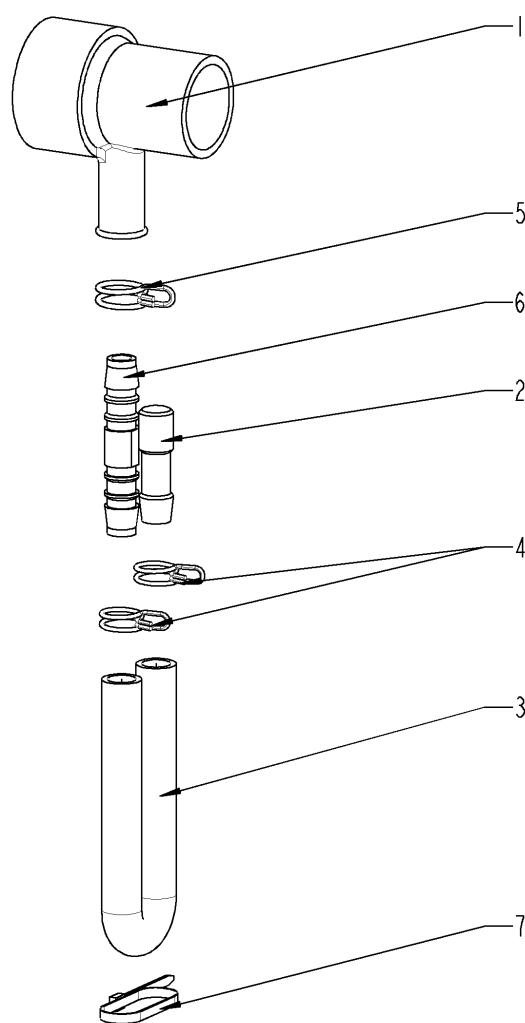
Steam generator



Steam generator

Pos.	Part No.	Description	Qty.
1	1106.0803	Hex combination nut M6 galv	1
2	10.00.709	Hex nut M6 w. locking	3
12	44.00.195	Heating element	1
13	44.00.533	Heating element w/o pipe	1
15	44.00.279	Gasket f. heating element	2
16	10.00.709	Hex nut M6 w. locking	18
17	2066.0519	Hose clamp 35,6mm	1
18	2066.0526	Hose clamp ø46mm	1
19	44.00.207	Emptying pump	1
20	1006.0762	Hex screw M6x10	2
21	1306.0222	Washer A6,4x15x1,5	2
22	44.00.232	Fixing device f. pump steam generator	1
23	10.00.709	Hex nut M6 w. locking	2
24	44.00.216	Drain hose steam generator	1
25	2066.0518	Hose clamp 30mm	2
26	40.00.291	Thermocouple steam generator	1
28	10.00.414	Cable strap black 120°	1
29	1104.0122	Hex combination nut M4 galv	1
30	2112.1006	Steam hose 50x7mm	1
31	2066.0504	Hose clamp 40-60mm	2
34	2066.0205	Hose clamp 8-16x9 mm SW 7mm	1
35	1105.0120	Hex nut M5	1
36	1205.0120	Tooth lock washer A5,3	1
A	8354.1320	Pump connection spout cpl.	1
B	44.00.173	Steam generator insulated	1

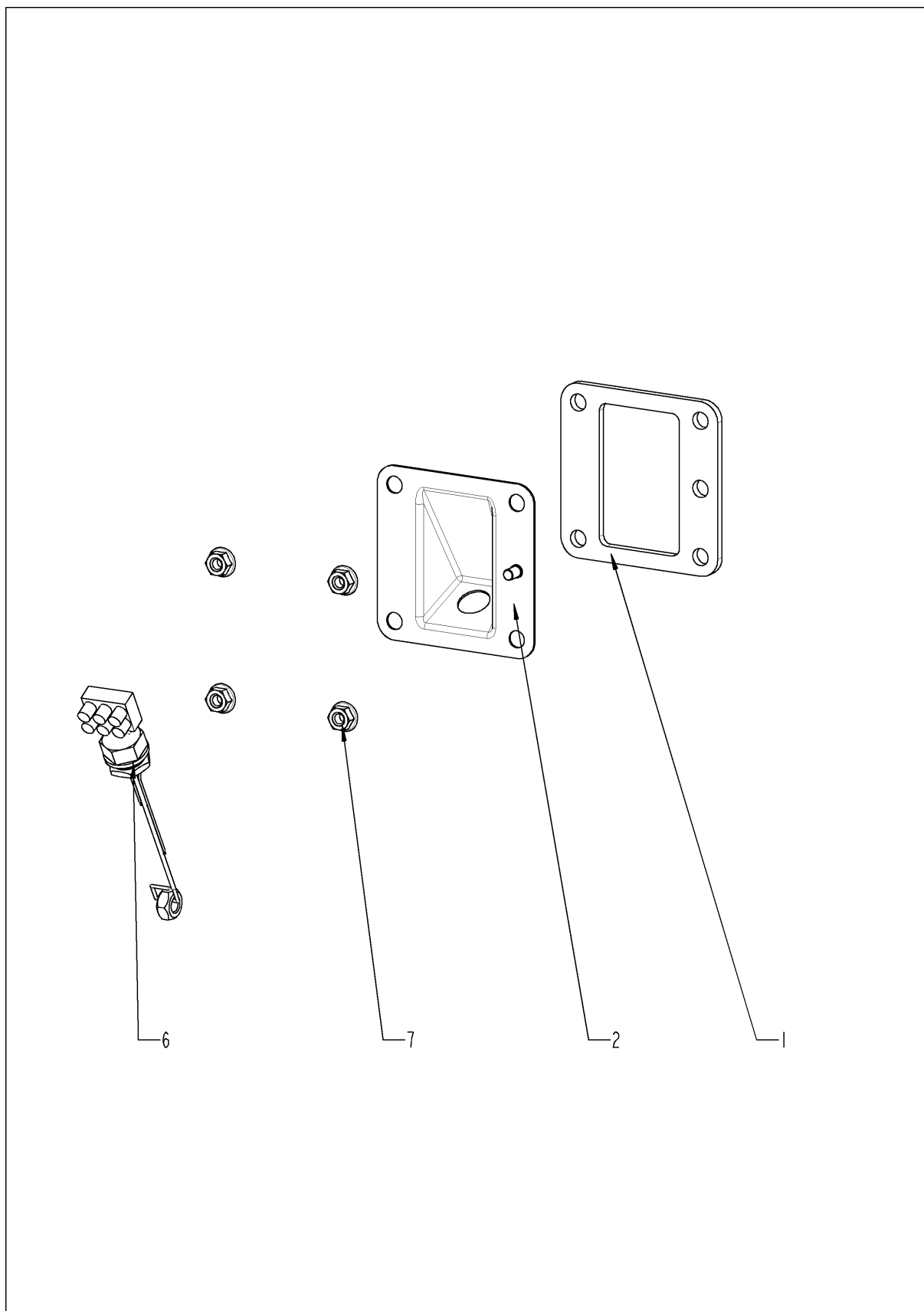
Pump connection spout



Pump connection spout

Pos.	Part No.	Description	Qty.
1	2118.1000	Pump connection spout	1
2	2120.1259	Stop plug 10mm	1
3	2110.1008	Silicon hose ø10x2mm	1
4	2066.0527	Hose clamp ø14mm	2
5	2066.0530	Hose clamp ø16.4mm	1
6	2062.0331	Junction pressure hose GS 10	1
7	4005.0101	Tie rap 145 mm	1

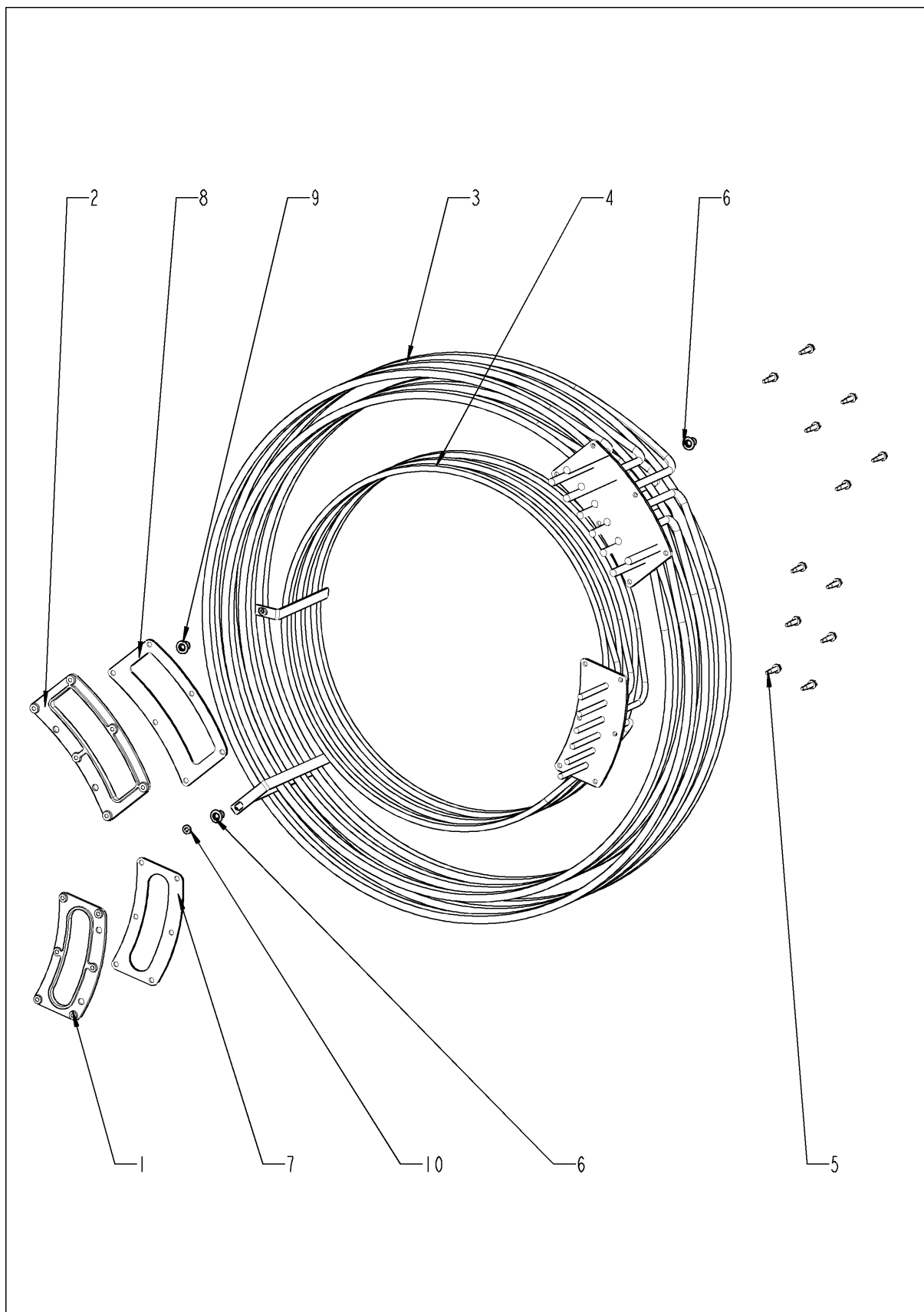
Steam generator, insulated



Steam generator, insulated

Pos.	Part No.	Description	Qty.
1	44.00.280	Gasket f. heating element+Level elektrode insert	1
2	2920.1300	Level elektrode insert	1
6	3002.0402	Filling level electrode 90 mm	1
7	10.00.709	Hex nut M6 w. locking	4

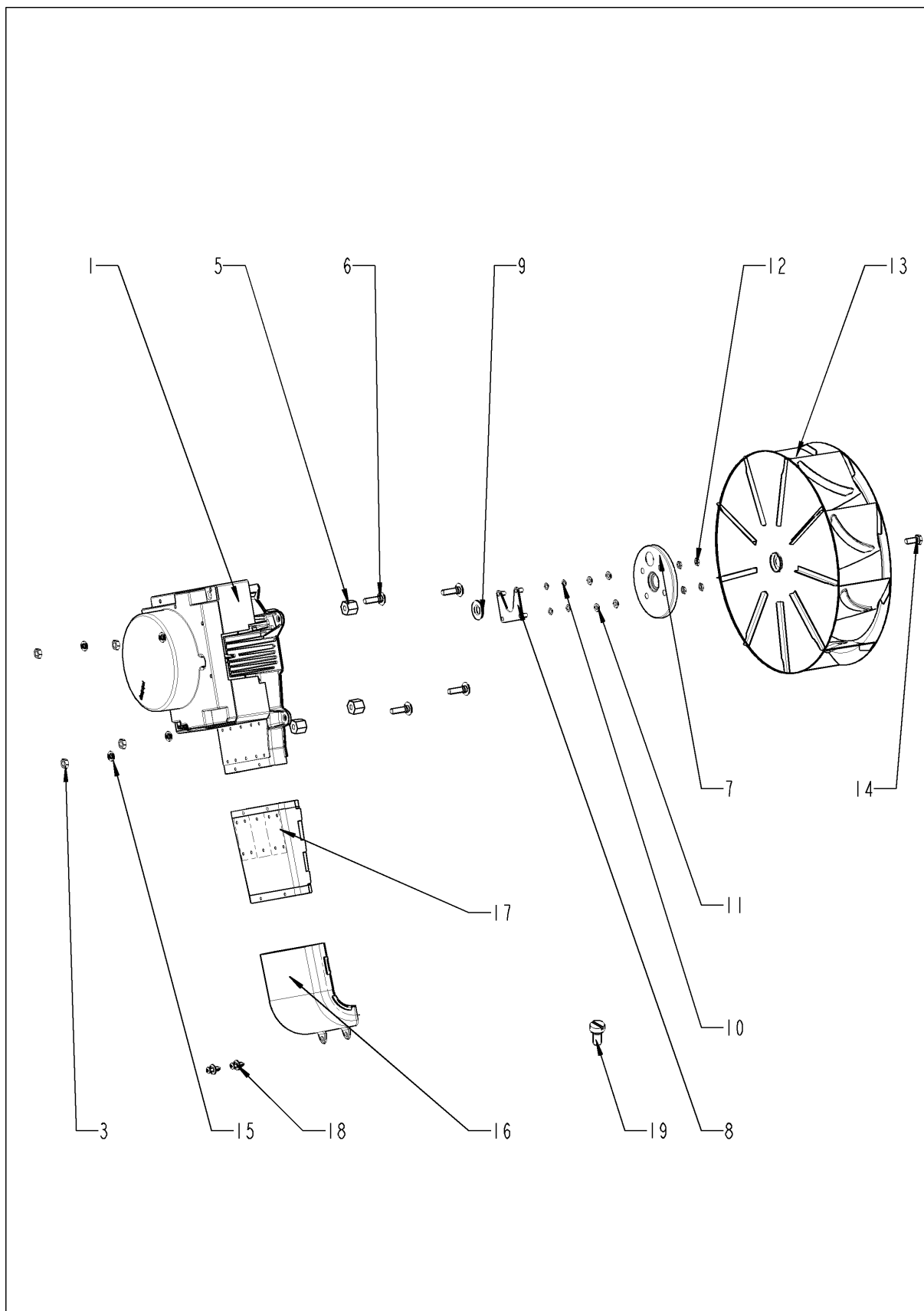
Hot air heating



Hot air heating

Pos.	Part No.	Description	Qty.
1	40.00.305	Mating flange f. heating assembly	1
2	40.00.330	Mating flange f. heating assembly	1
3	40.00.267	Heating assembly	1
4	40.00.271	Heating assembly	1
5	10.00.109	Hex screw M5x23	12
6	10.00.745	Cap nut M6*A2	2
7	40.00.332	Gasket f. heating assembly	1
8	40.00.331	Gasket f. heating assembly	1
9	1107.0103	Star lock ø3	4

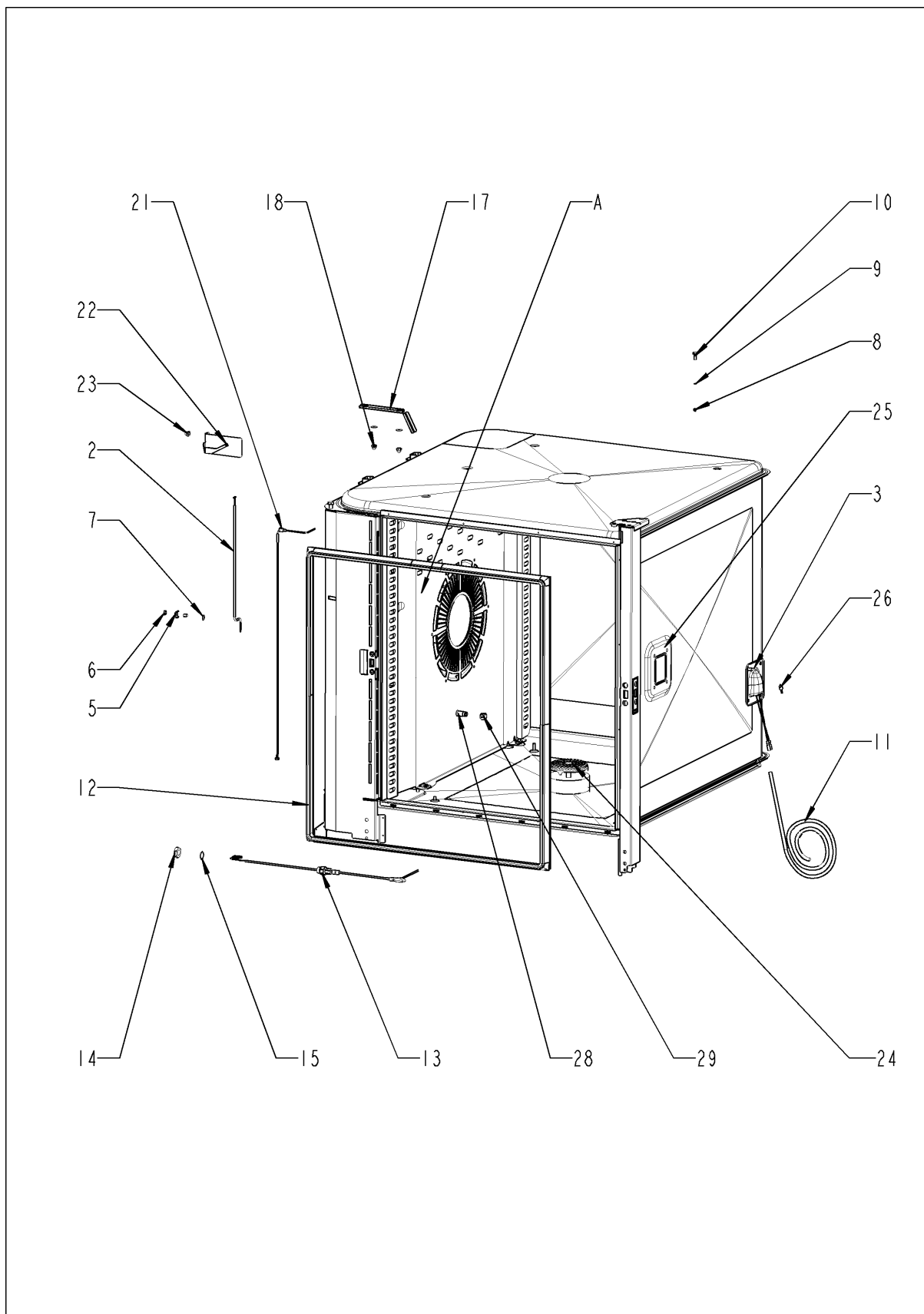
Motor and fan wheel



Motor and fan wheel

Pos.	Part No.	Description	Qty.
1	40.00.274	Fan motor	1
3	10.00.710	Hex nut M8 w. locking	4
5	2120.1306	Spacer SW19x17	4
6	1008.1005	Square necked mushroom head bolt 8x40	4
7	22.00.123	Flange f. motor shaft gasket	1
8	22.00.120	Mounting support f. gasket flange	1
9	22.00.083	Motor shaft gasket	1
10	1315.0101	Copper washer 6x10	4
11	1306.0120	Washer A6,4	4
12	1106.0220	Hex nut M6 flat	4
13	22.00.192	Fan wheel d340x135	1
14	10.00.565	Hex screw M8x20	1
15	1308.0162	Washer A8,4	1
16	40.00.310	Exhaust pipe below	1
17	40.00.435	Exhaust channel f. SSR	1
18	10.00.989	Rivet with screw	2
19	10.00.706	Oval head cap screw T20 M4x10	2

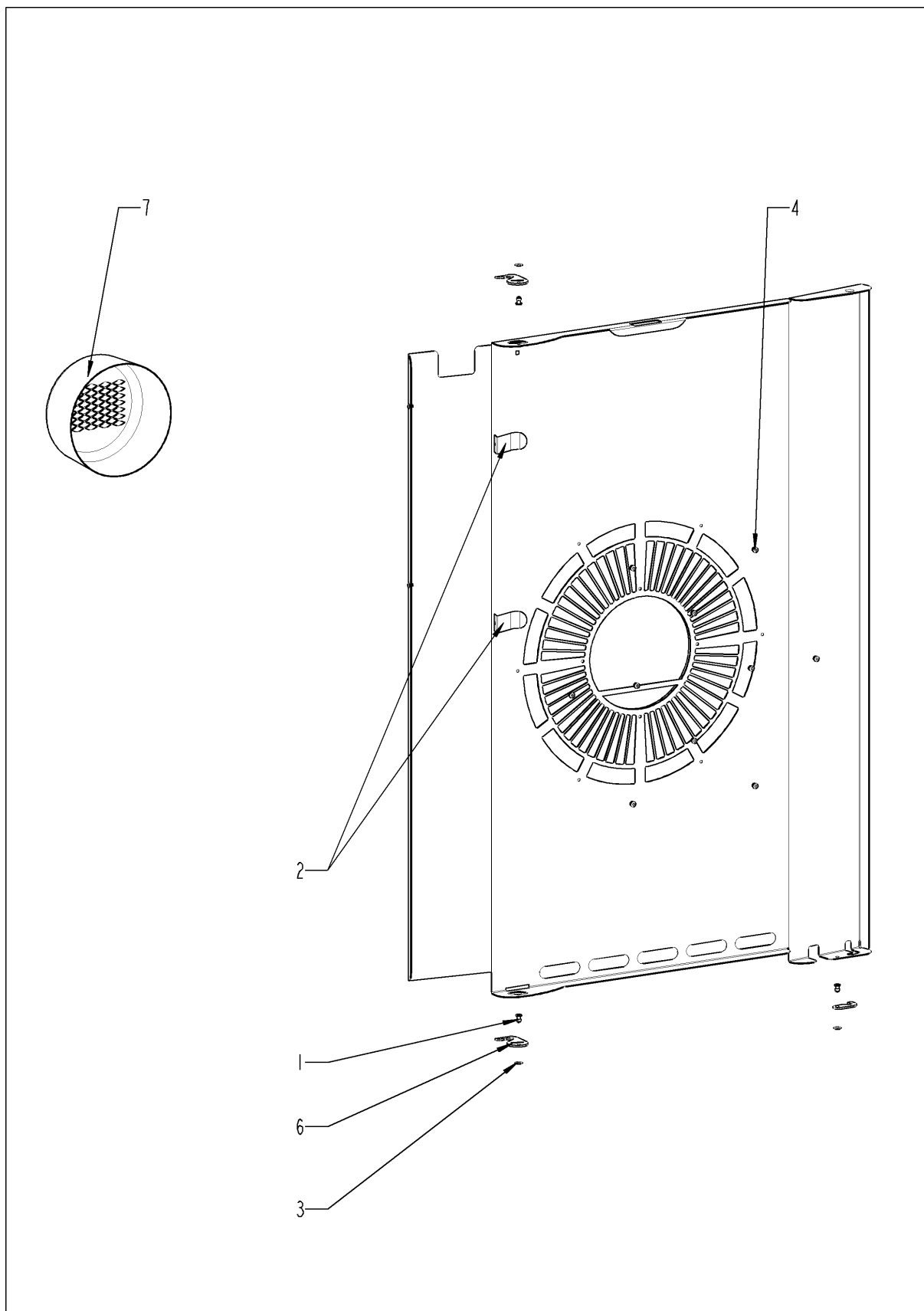
Interior cabinet



Interior cabinet

Pos.	Part No.	Description	Qty.
1	2120.1277	Base for sensor connection	1
2	40.00.290	Thermocouple humidity	1
3	40.00.098	Reflector f. interior light	1
4	10.00.041	Rivet nut M5 hexagon closed	4
5	1330.0100	Clamp strap f. sensor	1
6	1106.0224	Hex nut M6 self locking	1
7	1306.0120	Washer A6,4	1
8	1104.0120	Hex nut M4	1
9	1204.0120	Tooth lock washer A4,3	1
10	1006.0760	Hex screw M6x16	1
11	40.00.223	Wiring interior light	1
12	20.00.397	Door gasket	1
13	40.00.606	Meat probe sensor	1
14	10.00.612	Hex nut M16 flat	1
15	1315.0104	Copper washer 16x20x1,5	1
17	40.01.317	Screen core temperature sensor	1
18	10.00.745	Cap nut M6*A2	2
21	40.00.395	Thermocouple interior cabinet	1
22	40.02.136	Screen interior cabinet sensor	1
23	10.00.745	Cap nut M6*A2	1
24	20.00.999	Outlet sieve Ø80	1
25	40.00.091	Gasket frame w. glass a. gaskets	1
26	3024.0201	Halogen bulb 300°C	1
28	50.00.844	Nozzle f. moistening	1
29	50.00.846	Union nut M12x13.2 N	1
A	22.00.383	Air baffle	1

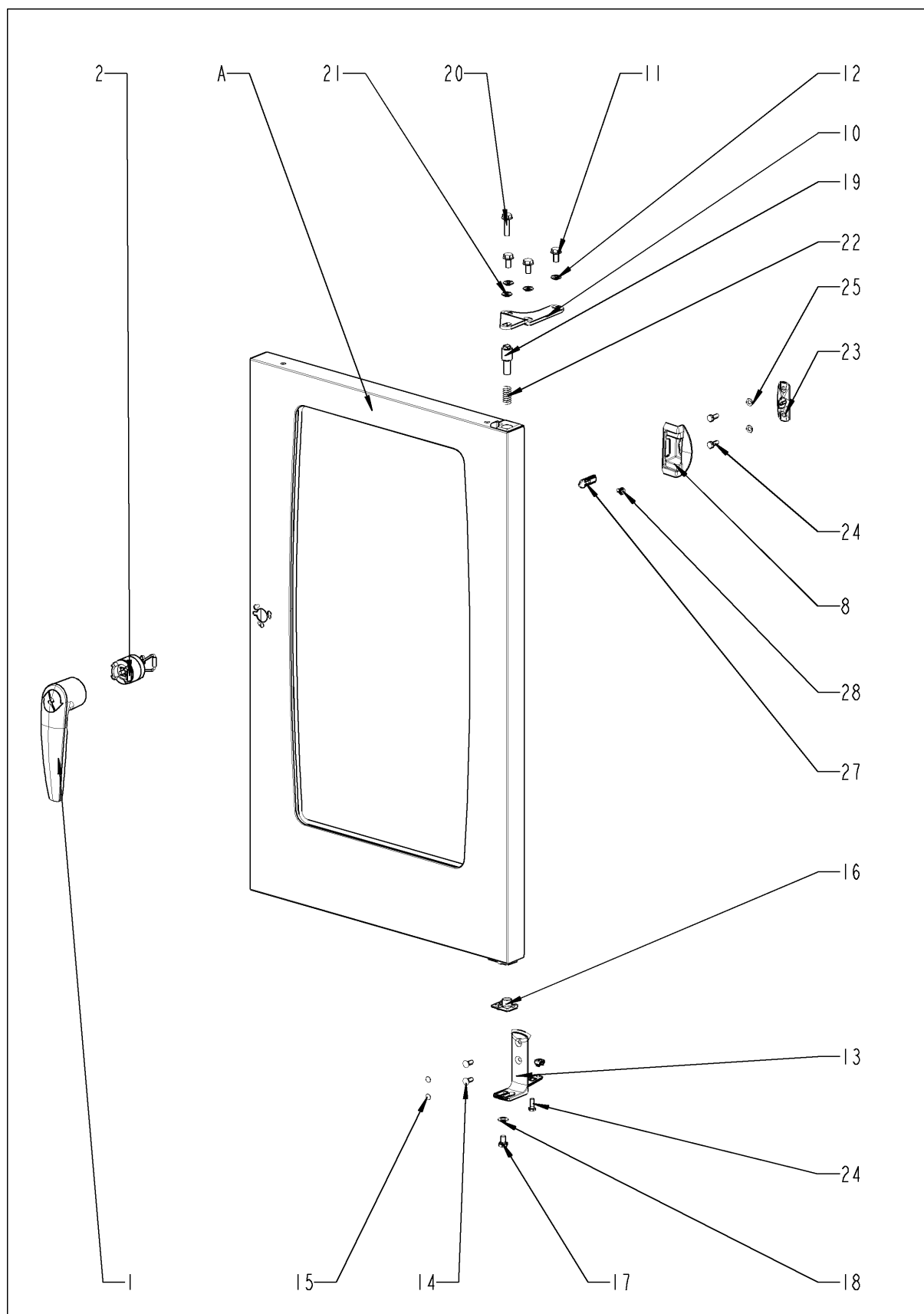
Air baffle



Air baffle

Pos.	Part No.	Description	Qty.
1	10.00.515	Rivet 3,2x5 A4	1
2	40.01.289	Fixing clip core temp. cable	1
3	10.00.744	Washer A4,3 *A4	1
4	1604.0167	Rivet 4x10	1
6	2760.1370	Latch hook for air baffle	1
7	22.00.361	Deep-draw f. air baffle	1

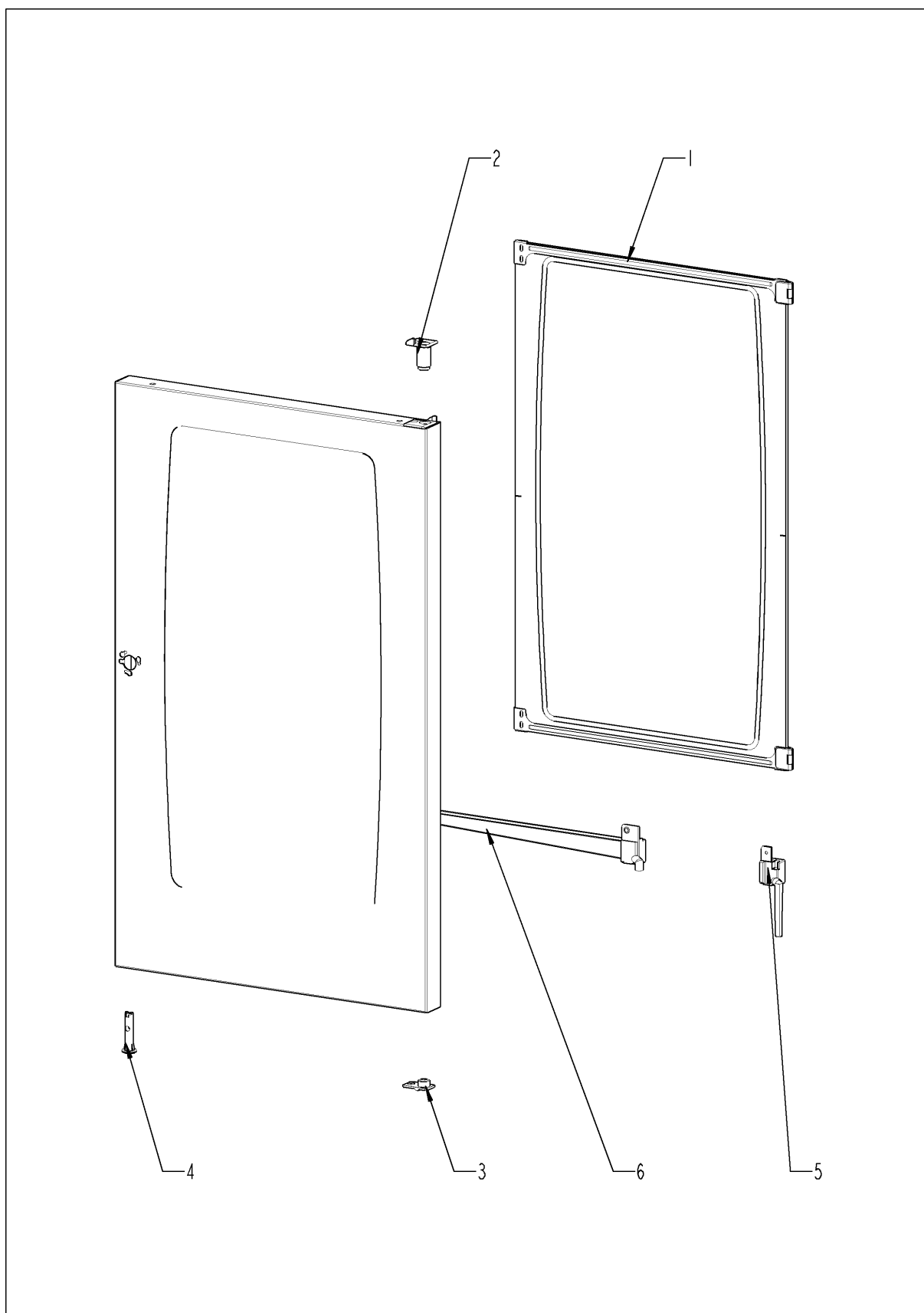
Door



Door

Pos.	Part No.	Description	Qty.
1	24.00.152	Door handle	1
2	24.00.176	Door lock	1
8	24.00.504	Lock cover	1
10	24.00.133	Door mounting support top	1
11	1008.0768	Ornamental screw M8x16	3
12	1308.0160	Washer A8,4	3
13	24.00.223	Door mounting support bottom	1
14	1006.1962	Countersunk screw Torx M6x16	2
15	10.00.090	Cap f. Torx T30	2
16	24.00.137	Door bolt	1
17	10.00.099	Hex screw M8x12	1
18	1308.0160	Washer A8,4	1
19	24.00.048	Door bolt	1
20	1008.0769	Ornamental screw M8x30	1
21	1308.0160	Washer A8,4	1
22	2001.0109	Compression spring	1
23	24.00.141	Holding bracket f. door catch	1
24	1006.0760	Hex screw M6x16	2
25	1306.0120	Washer A6,4	2
27	24.00.142	Door catch	1
28	1005.2000	Interlocking tooth screw M5x8	1
A	24.00.113	Door	1

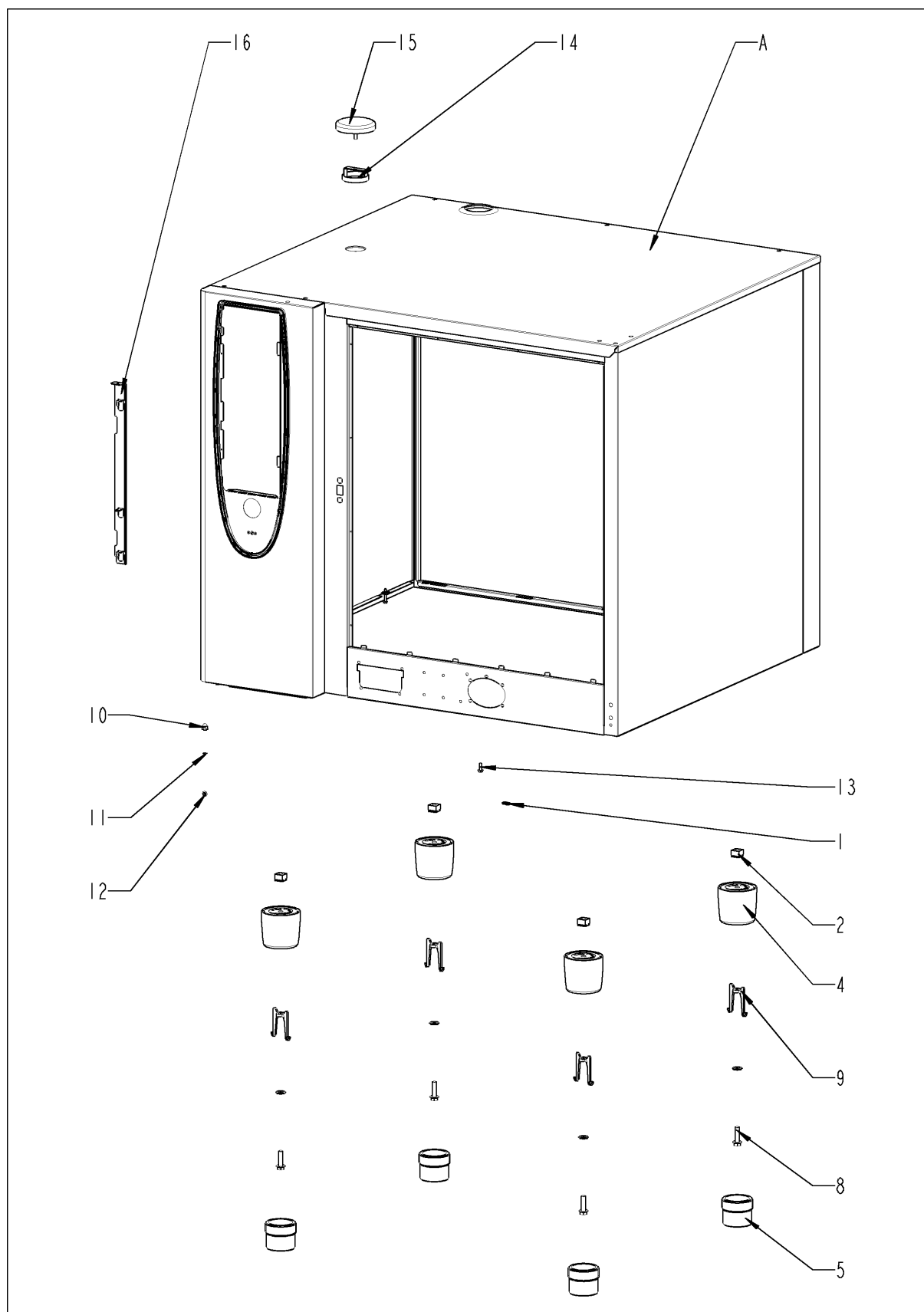
Door



Door

Pos.	Part No.	Description	Qty.
1	24.00.200	Inner glass pane	1
2	24.00.147	Sleeve for door bolt top	1
3	24.00.146	Door setting bolt	1
4	24.00.502	Fixing device f. magnet with magnet	1
5	24.01.188	Drain door drip collector	1
6	24.01.801	Door drip collector	1
9	24.00.171	Silicone buffer 7mm	1

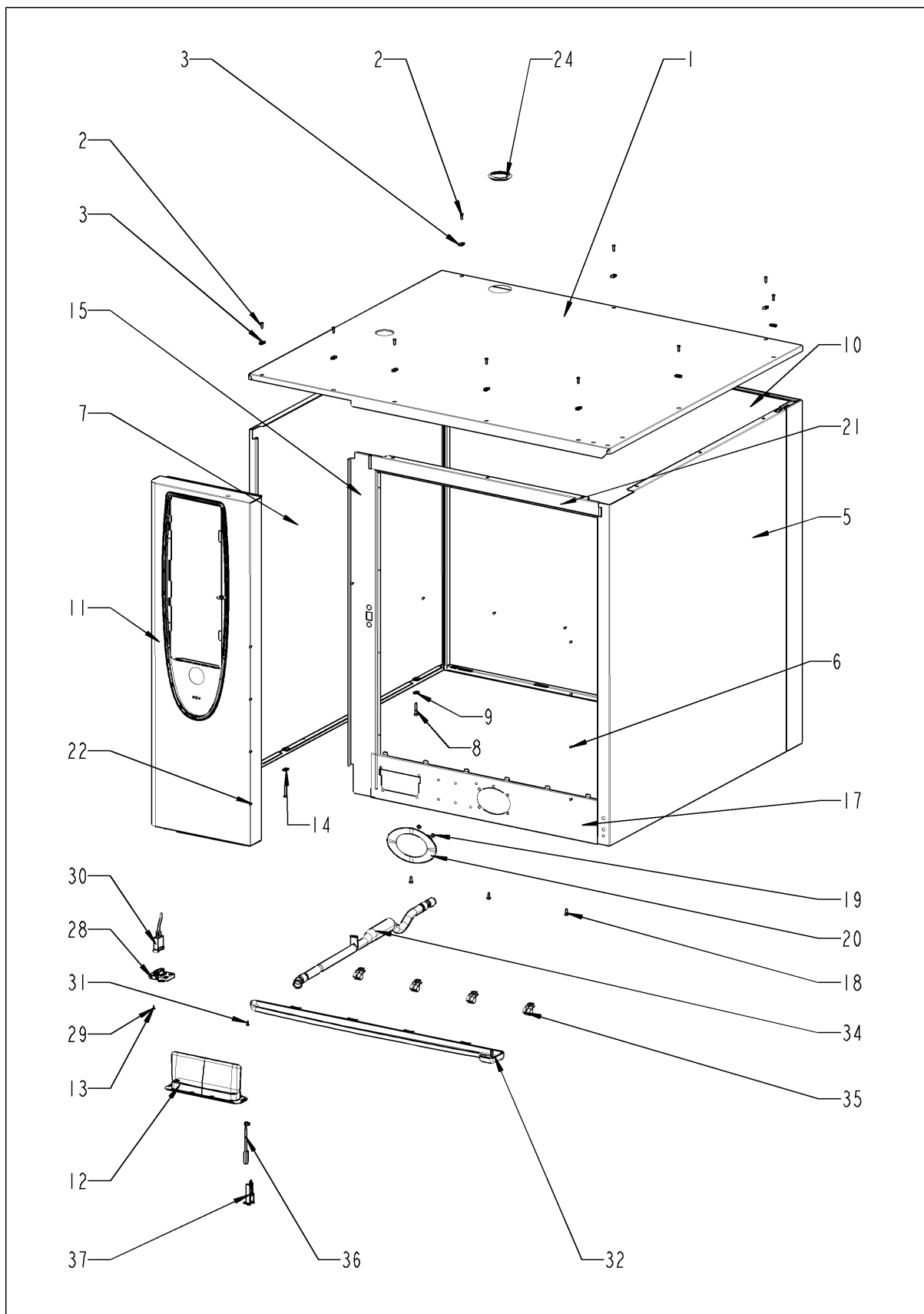
Exterior cabinet



Exterior cabinet

Pos.	Part No.	Description	Qty.
1	1104.0820	Snap nut 4,2mm	3
2	1110.0800	Cage nut M10	4
4	12.00.205	Upper part of pedestal	4
5	12.00.206	Lower part of pedestal	4
7	1328.0102	Safety washer A10,2	4
8	10.00.975	Hex screw M10x35	4
9	12.00.516	Turning lock f. lower part of pedestal	4
10	10.00.745	Cap nut M6*A2	1
11	1206.0120	Tooth lock washer A6,4	1
13	1005.2100	Interlocking tooth screw M5x16	1
14	22.00.354	Spacer ring	1
15	22.00.353	Vent cover	1
16	16.01.327	Opening mechanism for panel insert	1
23	1106.0802	Cage nut M6	4
A		Exterior cabinet	1

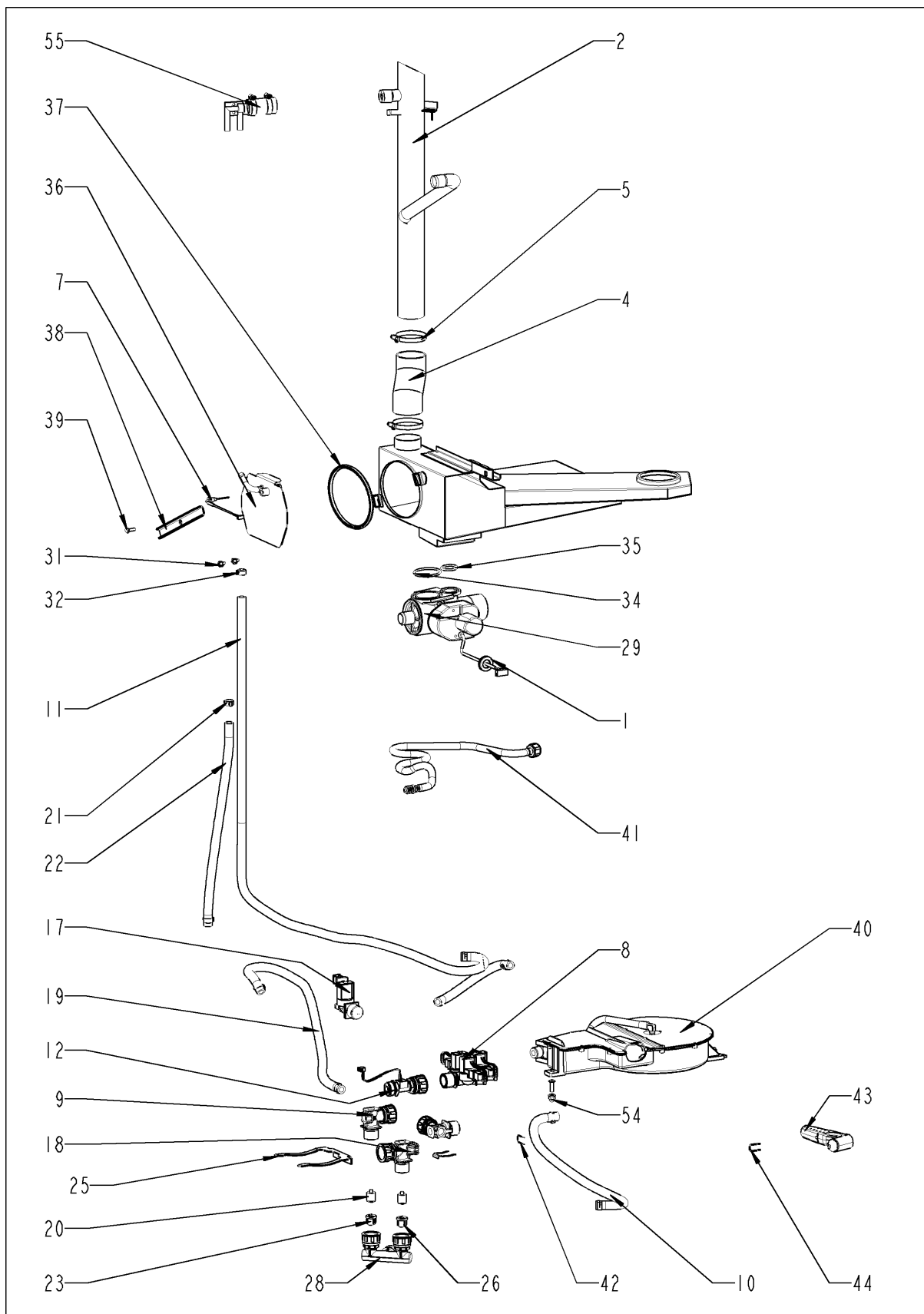
Exterior cabinet



Exterior cabinet

Pos.	Part No.	Description	Qty.
1	16.00.340	Top cover	1
2	1003.2265	Countersunk self tapping screw 4,2x16	5
3	1104.0820	Snap nut 4,2mm	5
5	16.00.154	Side panel right	1
6	1603.0166	Rivet 3,2x7,9 CNS closed	4
7	16.00.155	Side panel left	1
8	10.00.102	Hex self tapping screw B4,2x32	2
9	1104.0820	Snap nut 4,2mm	2
10	16.00.188	Back panel	1
11	16.00.299	Front panel	1
12	16.00.673	Air inlet filter	1
13	10.00.103	EJOT PT-screw KA 3.5x10	1
14	1104.0820	Snap nut 4,2mm	1
15	16.00.681	Crossbar front panel	1
17	16.01.511	Crossbar below	1
18	1004.2160	Hex self tapping screw 4,2x16	3
19	1107.0100	Star lock ø4	5
20	50.00.751	Tulip for handshower with tape	1
21	16.00.331	Crossbar top	1
22	1603.0166	Rivet 3,2x7,9 CNS closed	4
24	16.01.434	Gasket f. breather tube d=74mm	1
28	16.00.329	Cover f. USB interface	1
29	10.00.103	EJOT PT-screw KA 3.5x10	1
30	40.00.469	Interface cable USB 0.9m	1
31	10.00.460	EJOT PT-Screw Torx 3,5x14	2
32	50.00.300	Drip collector	1
34	50.01.192	Drain pipe	1
35	50.00.296	Clip f. drip collector	4
36	40.00.335	Door switch	1
37	16.01.146	Bracket for door contact switch	1

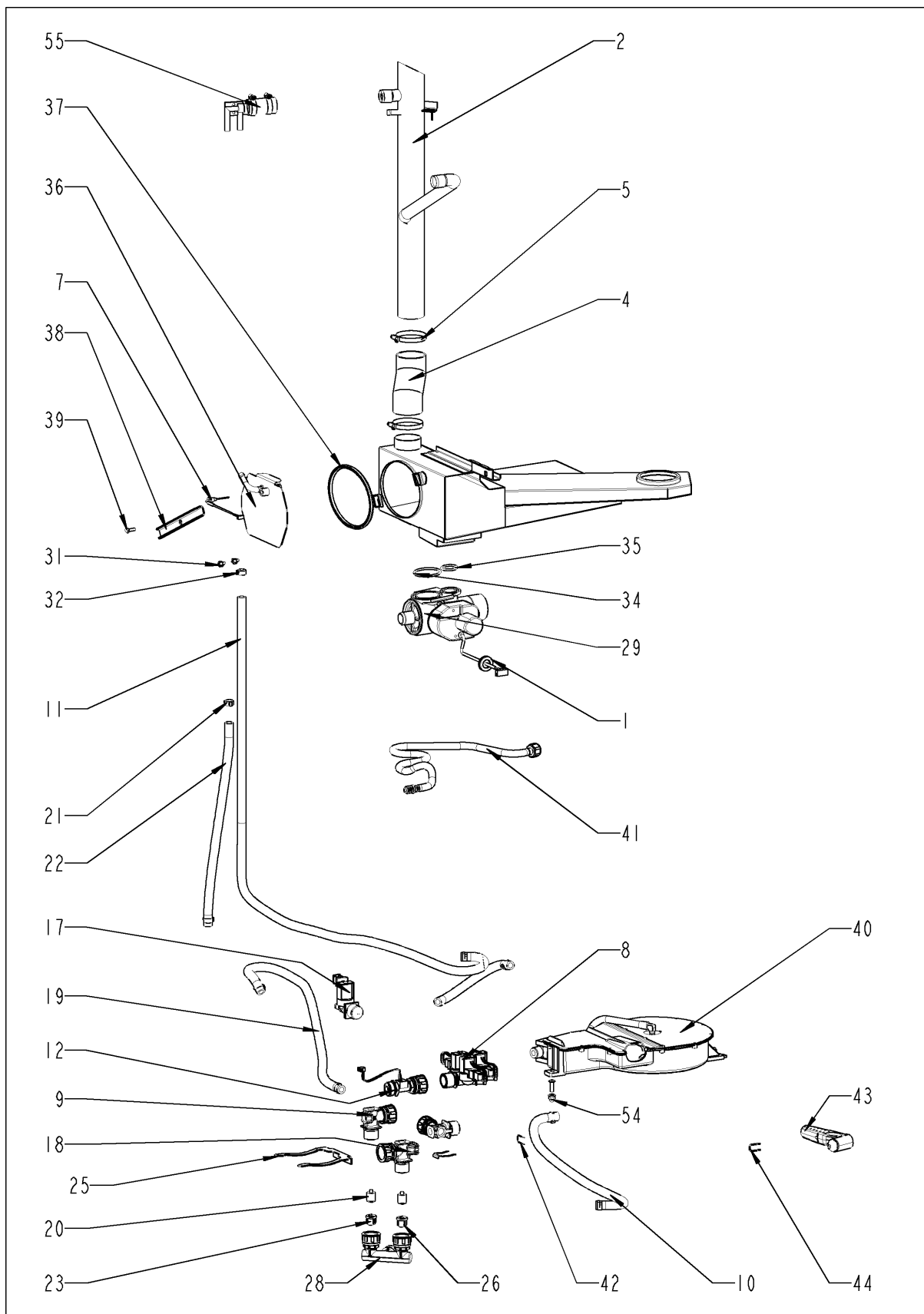
Water



Water

Pos.	Part No.	Description	Qty.
1	2022.0101	Grommet d8mm	1
2	54.00.220	Exhaust pipe	1
4	54.00.094	Rubber form piece venting pipe	1
5	2066.0516	Hose clamp 60-80 mm	2
7	40.00.287	Thermocouple quenching	1
8	50.01.050	Triple solenoid valve	1
9	50.00.071	Water distribution hor. w/o roll guide con.	1
10	2067.0050	Pressure hose d10mm	.96
11	2067.0050	Pressure hose d10mm	1.24
12	50.00.934	Water volume sensor	1
17	50.01.146	Single solenoid valve	1
18	50.00.070	Water distribution hor roll guide con.	1
19	2067.0050	Pressure hose d10mm	.74
20	50.00.078	Non return valve DW16/DN12	2
21	10.00.810	Hose clamp Cobra 16/8	7
22	2067.0050	Pressure hose d10mm	.65
23	1900.0202	Water filter	3
25	50.00.086	Locking plate f. water distribution	1
27	10.00.873	Hose clamp CLIC d=15.5mm	2
28	8664.1301	T-fitting water connection	1
29	54.00.357	Ball valve drain SCC cpl.	1
31	10.00.449	Pan head screw M6x16	2
32	10.00.249	Plastic cable clamp D4.5	1
33	1104.0120	Hex nut M4	1
34	10.00.511	O-ring for ball valve drain 46x3.5	1
35	10.00.512	O-ring for ball valve drain 26x3.5	1
36	54.00.781	Inspection lid with quenching nozzle	1
37	54.00.805	Gasket f. inspection lid quenching	1
38	54.00.225	Clamping bar	1
39	1008.0750	Hex screw M5x16	1
40	50.00.140	Hand shower roll guide	1
41	50.01.173	Connect. pipe f. hand shower roll guide	1
41	50.00.174	Connect. pipe f. hand shower roll guide	1
42	50.00.085	Plug-in spring f. hand shower roll guide	1
43	50.00.130	Hand shower	1
44	50.00.156	Clamp f. hand shower roll guide	1

Water



SelfCooking Center 102E

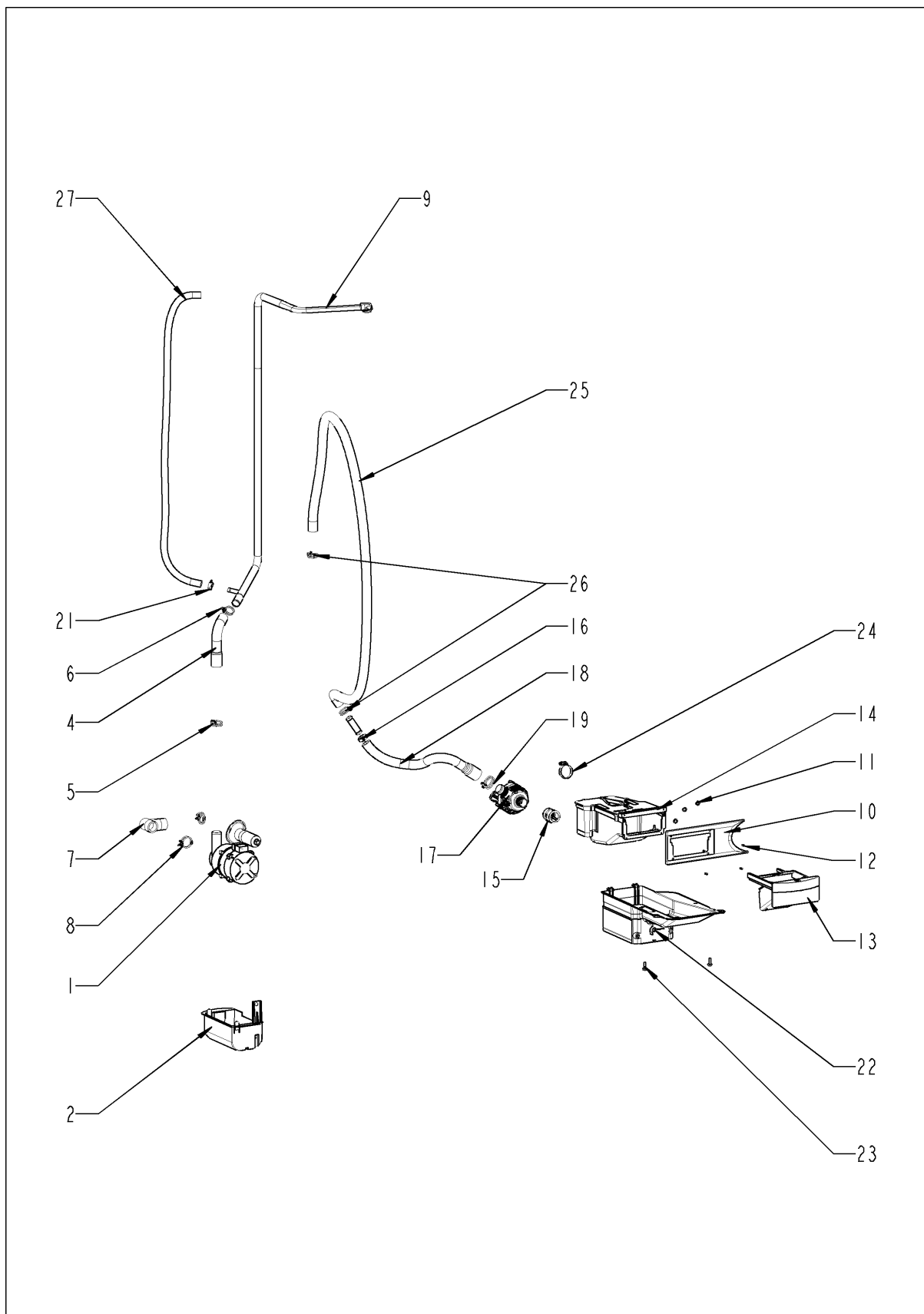
validity: 10/2008



Water

Pos.	Part No.	Description	Qty.
54	1105.0121	Hex combination nut M5 galv	1
55	8354.1304	Venting valve for steam generator	1
56	2067.0050	Pressure hose d10mm	.1

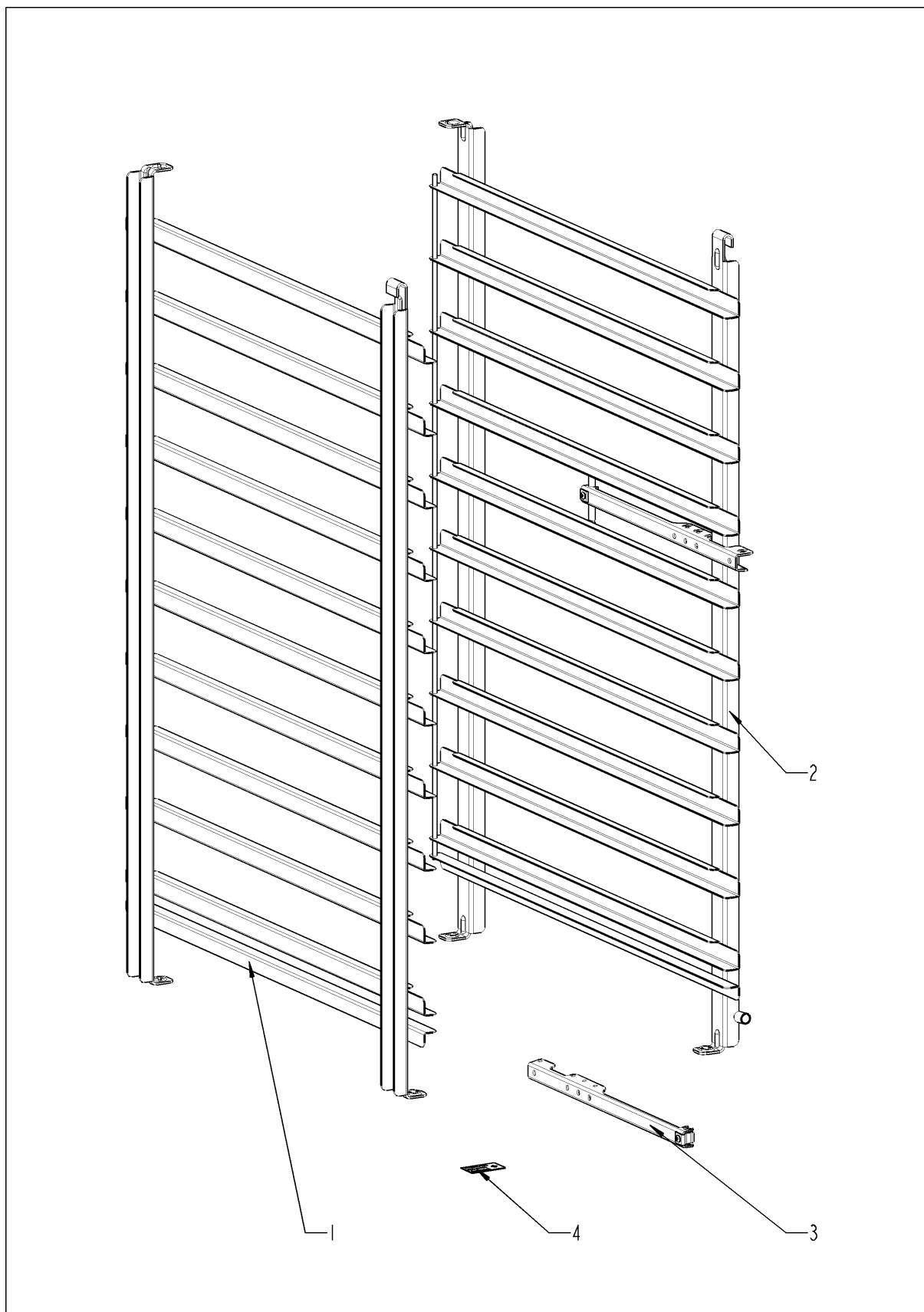
CleanJet + Care



CleanJet + Care

Pos.	Part No.	Description	Qty.
1	56.00.153	Pump f. cleaning UP30	1
2	12.00.319	Housing f. Cleaning pump	1
4	56.00.166	Pressure hose f. cleaning	1
5	2066.0518	Hose clamp 30mm	1
6	2066.0521	Hose clamp 27mm	1
7	56.00.120	Suction hose f. cleaning	1
8	2066.0518	Hose clamp 30mm	2
9	56.00.163	Pipe f. Cleaning	1
10	56.00.445	Frame for drawer CareControl	1
11	1107.0100	Star lock ø4	6
12	10.00.980	EJOT PT-Screw K30x10	4
13	56.00.488	Drawer Care container	1
14	56.00.492	Care container table unit	1
15	56.00.462	Bushing care container/pump	1
16	2066.0506	Hose clamp 20-32mm	1
17	87.00.352	Pump f. CareControl DPS 35	1
18	56.00.540	Care hose 1	1
19	2066.0518	Hose clamp 30mm	1
20	2067.0156	Pressure hose ø10mm, 440mm long	1
21	2066.0202	Hose clamp 12-22 mm	1
22	56.00.380	Cover for pump	1
23	1005.2100	Interlocking tooth screw M5x16	2
24	2066.0506	Hose clamp 20-32mm	1
25	56.00.428	Care hose 2	1
26	10.00.605	Hose clamp ø25.3	2
27	2067.0050	Pressure hose d10mm	.89

Miscellaneous



Miscellaneous

Pos.	Part No.	Description	Qty.
1	60.12.003	Hinging rack left	1
2	60.12.004	Hinging rack right	1
3	60.71.022	Positioning support f. core sensor	1
4	10.00.399	Sticker set	1

Index

Part-no.	Description	Page
22.00.383	Air baffle	23
16.00.673	Air inlet filter	33
40.02.641	Auxilliary contact B&J HN10 N/O	9
16.00.188	Back panel	33
54.00.357	Ball valve drain SCC cpl.	35
2120.1277	Base for sensor connection	23
16.01.146	Bracket for door contact switch	33
40.00.471	Bus cable 0.8m	7
56.00.462	Bushing care container/pump	39
40.02.087	Buzzer	5
10.00.471	Cable clip d10-12mm	7
10.00.111	Cable clip long	7, 9
10.00.112	Cable clip short	7
40.02.933	Cable control harness	9
40.00.306	Cable entry	7
10.00.414	Cable strap black 120°	13
1104.0801	Cage nut M4	7
1106.0802	Cage nut M6	31
1110.0800	Cage nut M10	31
10.00.090	Cap f. Torx T30	27
10.00.745	Cap nut M6*A2	19, 23, 31
56.00.492	Care container table unit	39
56.00.540	Care hose 1	39
56.00.428	Care hose 2	39
50.00.156	Clamp f. hand shower roll guide	35
1330.0100	Clamp strap f. sensor	23
54.00.225	Clamping bar	35
50.00.296	Clip f. drip collector	33
2001.0109	Compression spring	27
50.01.173	Connect. pipe f. hand shower roll guide	35
50.00.174	Connect. pipe f. hand shower roll guide	35
40.02.765	Contactor B&J K3-40B00 230	9

Index

Part-no.	Description	Page
87.00.000	Control panel insert with overlay	5
42.00.002	Control pcb	5
40.00.277	Control transformer	9
3101.1008	Cooling fan	9
1315.0101	Copper washer 6x10	21
1315.0104	Copper washer 16x20x1,5	23
1006.1962	Countersunk screw Torx M6x16	27
1003.2265	Countersunk self tapping screw 4,2x16	33
16.00.329	Cover f. USB interface	33
56.00.380	Cover for pump	39
16.01.511	Crossbar below	33
16.00.681	Crossbar front panel	33
16.00.331	Crossbar top	33
22.00.361	Deep-draw f. air baffle	25
16.00.232	Dial f. pulse generator blue	5
24.00.113	Door	27
24.00.137	Door bolt	27
24.00.048	Door bolt	27
24.00.142	Door catch	27
24.01.801	Door drip collector	29
20.00.397	Door gasket	23
24.00.152	Door handle	27
24.00.176	Door lock	27
24.00.223	Door mounting support bottom	27
24.00.133	Door mounting support top	27
24.00.146	Door setting bolt	29
40.00.335	Door switch	33
24.01.188	Drain door drip collector	29
44.00.216	Drain hose steam generator	13
50.01.192	Drain pipe	33
56.00.488	Drawer Care container	39
50.00.300	Drip collector	33

Index

Part-no.	Description	Page
40.01.329	Dry up protector 183°	9
10.00.980	EJOT PT-Screw K30x10	39
10.00.103	EJOT PT-screw KA 3.5x10	33
10.00.460	EJOT PT-Screw Torx 3,5x14	33
10.00.239	EJOT PT-Screw Torx 4x10	7, 9, 11
40.02.424	Electronic noise filter	9
44.00.207	Emptying pump	13
40.00.435	Exhaust channel f. SSR	21
54.00.220	Exhaust pipe	35
40.00.310	Exhaust pipe below	21
40.00.274	Fan motor	21
22.00.192	Fan wheel d340x135	21
3002.0402	Filling level electrode 90 mm	17
40.01.289	Fixing clip core temp. cable	25
40.00.417	Fixing clip f. pcb	7
24.00.502	Fixing device f. magnet with magnet	29
44.00.232	Fixing device f. pump steam generator	13
2020.0400	Fixing device for cable harness	5
22.00.123	Flange f. motor shaft gasket	21
56.00.445	Frame for drawer CareControl	39
16.00.299	Front panel	33
40.02.512	Fuse holder 2x6.3A	9
16.01.434	Gasket f. breather tube d=74mm	33
40.00.332	Gasket f. heating assembly	19
40.00.331	Gasket f. heating assembly	19
44.00.279	Gasket f. heating element	13
44.00.280	Gasket f. heating element+Level elektrode insert	17
22.00.198	Gasket f. hum. meas. Pipe	11
54.00.805	Gasket f. inspection lid quenching	35
22.00.564	Gasket f. ventilation	11
40.00.091	Gasket frame w. glass a. gaskets	23
5110.1029	Gasket mode switch	5

Index

Part-no.	Description	Page
2022.0101	Grommet d8mm	35
3024.0201	Halogen bulb 300°C	23
50.00.130	Hand shower	35
50.00.140	Hand shower roll guide	35
40.00.267	Heating assembly	19
40.00.271	Heating assembly	19
44.00.195	Heating element	13
44.00.533	Heating element w/o pipe	13
1104.0122	Hex combination nut M4 galv	11, 13
1105.0121	Hex combination nut M5 galv	7, 37
1106.0803	Hex combination nut M6 galv	13
1104.0120	Hex nut M4	7, 23, 35
1104.0121	Hex nut M4 self locking	5
10.00.916	Hex nut M4 w. locking	5
1105.0120	Hex nut M5	13
1106.0160	Hex nut M6	7
1106.0220	Hex nut M6 flat	21
1106.0224	Hex nut M6 self locking	23
10.00.709	Hex nut M6 w. locking	7, 13, 17
10.00.710	Hex nut M8 w. locking	21
3014.0302	Hex nut M10 for dry-up protector	9
3014.0327	Hex nut M10x1,0	9
10.00.612	Hex nut M16 flat	23
1008.0750	Hex screw M5x16	35
10.00.109	Hex screw M5x23	19
1006.0762	Hex screw M6x10	13
1006.0760	Hex screw M6x16	23, 27
10.00.099	Hex screw M8x12	27
10.00.565	Hex screw M8x20	21
10.00.975	Hex screw M10x35	31
1004.2160	Hex self tapping screw 4,2x16	33
10.00.102	Hex self tapping screw B4,2x32	33

Index

Part-no.	Description	Page
60.12.003	Hinging rack left	41
60.12.004	Hinging rack right	41
24.00.141	Holding bracket f. door catch	27
2066.0205	Hose clamp 8-16x9 mm SW 7mm	13
2066.0202	Hose clamp 12-22 mm	39
2066.0506	Hose clamp 20-32mm	39
2066.0521	Hose clamp 27mm	39
2066.0518	Hose clamp 30mm	13, 39
2066.0519	Hose clamp 35,6mm	13
2066.0504	Hose clamp 40-60mm	11, 13
2066.0516	Hose clamp 60-80 mm	35
10.00.873	Hose clamp CLIC d=15.5mm	35
10.00.810	Hose clamp Cobra 16/8	35
2066.0527	Hose clamp ø14mm	15
2066.0530	Hose clamp ø16.4mm	15
10.00.605	Hose clamp ø25.3	39
2066.0526	Hose clamp ø46mm	13
22.00.525	Hose set f. humidity control	11
12.00.319	Housing f. Cleaning pump	39
22.00.576	Humidity control cpl. with motor	11
3101.1010	Humidity control motor	11
24.00.200	Inner glass pane	29
22.00.517	Inner humidity meas. Piece	11
54.00.781	Inspection lid with quenching nozzle	35
40.02.428	Installation rail for Contactor	9
40.00.469	Interface cable USB 0.9m	33
1005.2000	Interlocking tooth screw M5x8	27
1005.2100	Interlocking tooth screw M5x16	31, 39
2062.0331	Junction pressure hose GS 10	15
2760.1370	Latch hook for air baffle	25
2920.1300	Level elektrode insert	17
24.00.504	Lock cover	27

Index

Part-no.	Description	Page
50.00.086	Locking plate f. water distribution	35
12.00.206	Lower part of pedestal	31
40.00.305	Mating flange f. heating assembly	19
40.00.330	Mating flange f. heating assembly	19
40.00.606	Meat probe sensor	23
4007.0620	Membrane DGC 29	9
3016.0102	Micro switch	11
22.00.083	Motor shaft gasket	21
22.00.563	Mounting device f. pressure sensor	11
16.00.387	Mounting device f.sealing + sealing lip	5
22.00.120	Mounting support f. gasket flange	21
50.00.078	Non return valve DW16/DN12	35
50.00.844	Nozzle f. moistening	23
10.00.512	O-ring for ball valve drain 26x3.5	35
10.00.511	O-ring for ball valve drain 46x3.5	35
16.01.327	Opening mechanism for panel insert	31
1008.0768	Ornamental screw M8x16	27
1008.0769	Ornamental screw M8x30	27
22.00.200	Outer humidity meas. Piece	11
20.00.999	Outlet sieve Ø80	23
10.00.706	Oval head cap screw T20 M4x10	7, 21
10.00.449	Pan head screw M6x16	35
10.00.507	Pan head screw Torx 5/16" T20	7
56.00.163	Pipe f. Cleaning	39
10.00.249	Plastic cable clamp D4.5	35
50.00.085	Plug-in spring f. hand shower roll guide	35
60.71.022	Positioning support f. core sensor	41
40.00.593	Power supply cable 5x10mm ²	7
2067.0050	Pressure hose d10mm	35, 37, 39
56.00.166	Pressure hose f. cleaning	39
2067.0156	Pressure hose ø10mm, 440mm long	39
3017.1011	Pressure sensor for humidity control Huba 401	11

Index

Part-no.	Description	Page
2005.0106	Protective grid for cooling fan	9
40.00.404	Pulse generator	5
2118.1000	Pump connection spout	15
8354.1320	Pump connection spout cpl.	13
87.00.352	Pump f. CareControl DPS 35	39
56.00.153	Pump f. cleaning UP30	39
40.00.098	Reflector f. interior light	23
42.00.065	Relay-I/O pcb	7
10.00.515	Rivet 3,2x5 A4	25
1603.0166	Rivet 3,2x7,9 CNS closed	33
1604.0167	Rivet 4x10	25
10.00.041	Rivet nut M5 hexagon closed	23
10.00.989	Rivet with screw	21
54.00.094	Rubber form piece venting pipe	35
40.01.482	Safety temperature limiter 365°C	9
1328.0102	Safety washer A10,2	31
40.01.317	Screen core temperature sensor	23
40.02.136	Screen interior cabinet sensor	23
10.00.240	Screw Torx 3x20	9
10.00.238	Screw Torx 4x50	9
16.00.155	Side panel left	33
16.00.154	Side panel right	33
2110.1008	Silicon hose Ø10x2mm	15
24.00.171	Silicone buffer 7mm	29
50.01.146	Single solenoid valve	35
24.00.147	Sleeve for door bolt top	29
1104.0820	Snap nut 4,2mm	31, 33
40.00.453	Solid state relais	7
10.00.355	Spacer black	5
10.00.243	Spacer M4x8	7
22.00.354	Spacer ring	31
2120.1306	Spacer SW19x17	21

Index

Part-no.	Description	Page
1008.1005	Square necked mushroom head bolt 8x40	21
1107.0103	Star lock ø3	19
1107.0100	Star lock ø4	33, 39
44.00.173	Steam generator insulated	13
2112.1006	Steam hose 50x7mm	13
10.00.399	Sticker set	41
2120.1259	Stop plug 10mm	15
56.00.120	Suction hose f. cleaning	39
8664.1301	T-fitting water connection	35
4001.1206	Terminal block 35mm ² grey	9
4001.1233	Terminal block yellow/green 35mm ²	9
4001.1252	Terminal block, blue 35 mm ²	9
40.00.290	Thermocouple humidity	23
40.00.395	Thermocouple interior cabinet	23
40.00.287	Thermocouple quenching	35
40.00.291	Thermocouple steam generator	13
4005.0101	Tie rap 145 mm	15
1204.0120	Tooth lock washer A4,3	23
1205.0120	Tooth lock washer A5,3	13
1206.0120	Tooth lock washer A6,4	7, 31
16.00.340	Top cover	33
50.01.050	Triple solenoid valve	35
50.00.751	Tulip for handshower with tape	33
12.00.516	Turning lock f. lower part of pedestal	31
50.00.846	Union nut M12x13.2 N	23
12.00.205	Upper part of pedestal	31
22.00.353	Vent cover	31
8354.1304	Venting valve for steam generator	37
10.00.744	Washer A4,3 *A4	25
1306.0120	Washer A6,4	21, 23, 27
1306.0222	Washer A6,4x15x1,5	13
1308.0162	Washer A8,4	21

Index

Part-no.	Description	Page
1308.0160	Washer A8,4	27
50.00.070	Water distribution hor roll guide con.	35
50.00.071	Water distribution hor. w/o roll guide con.	35
1900.0202	Water filter	35
50.00.934	Water volume sensor	35
40.00.223	Wiring interior light	23

