



SELF-CONTAINED CUBER

PARTS LIST

[HE] [GENERAL(60Hz)] [KOREA(60Hz)] [HS]

E1FE-D010,D011,D012,D015,D021,D022,D026,D027
-D210

B-1 SEP. 2012
G-1 APR. 2017
G-2 - - (only 100NE)
G-3 NOV.2017
J-1 JUL. 2019
J-2 SEP. 2019
J-3 NOV.2019

IM-100CNE
IM-100CNE-23
IM-100CNE-21
IM-100CNE(KR)
IM-100CNE-21(KR)
IM-100CNE-23(KR)
IM-100CNE(HS)
IM-100CNE-SN

List of Specifications

IM-100CNE	E1FE-D010	Standard
IM-100CNE-23	E1FE-D011	23mm ICE of IM-100CNE
IM-100CNE-21	E1FE-D012	21mm ICE of IM-100CNE
IM-100CNE	E1FE-D015	GENERAL 230V, 60Hz
IM-100CNE(KR)	E1FE-D021	For KOREA 220V, 60Hz
IM-100CNE-21(KR)	E1FE-D022	21mm ICE of IM-100CNE for KOREA 220V 60Hz
IM-100CNE(HS)	E1FE-D026	For Singapore special water valve
IM-100CNE-23(KR)	E1FE-D027	23mm ICE of IM-100CNE for KOREA 220V 60Hz
IIM-100CNE-SN	E1FE-D210	Ti Evaporator

Auxiliary Codes

Auxiliary Code Breakdown

The auxiliary code is the first two characters in the serial number. The first character indicates the year. Years progress or regress in alphabetical order. The series runs from "A" through "V" and the letters "I" and "O" are skipped. The second character indicates significant part changes within a year. Base is "0" and this number advances for each change. In cases where there is a letter in parentheses, this designates the month. This is the last character in the serial number. The series runs from "(A)" through "(M)" and the letter "(I)" is skipped. This designation is only included when identifying a parts change within an auxiliary code.

Note About Ordering Parts

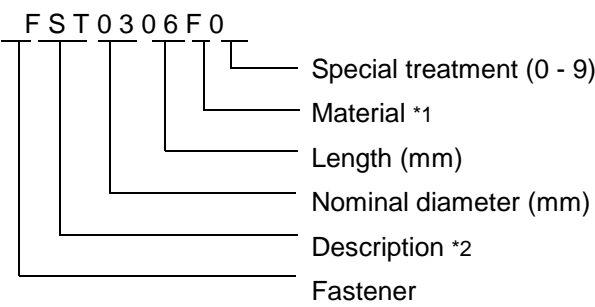
Most assemblies cannot be ordered as complete units; parts in the assemblies generally must be ordered separately.

MARKS LOCATED UNDER THE AUXILIARY CODE

- = Part deleted.

FASTENER PART NUMBER

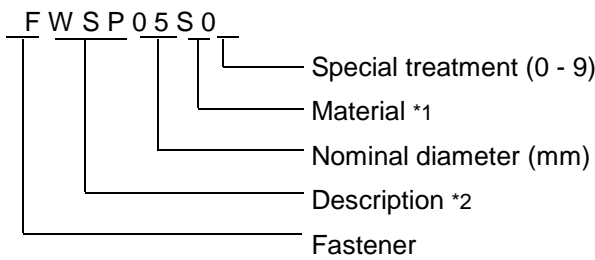
SCREWS



*1

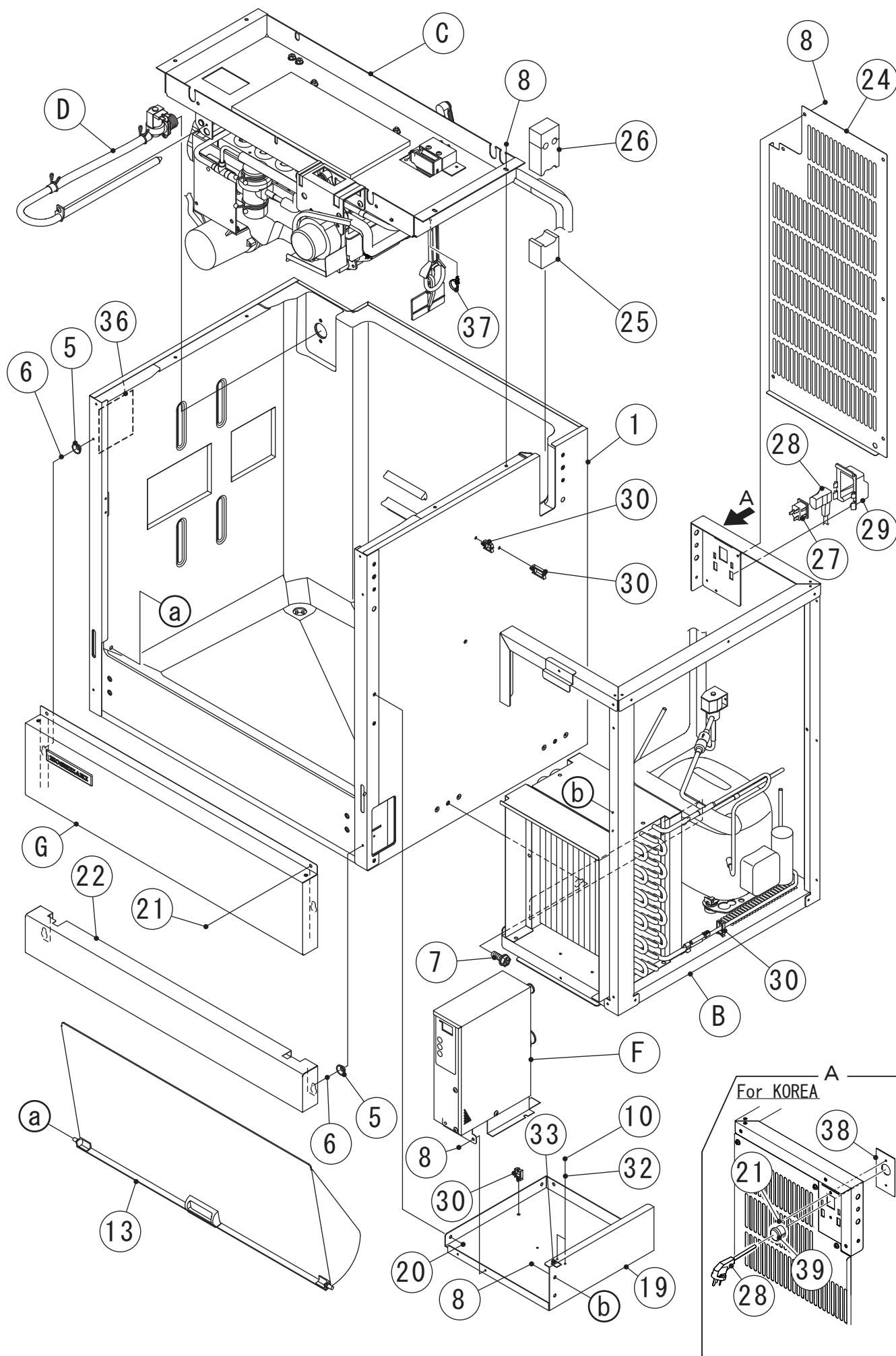
- F: Steel
- S: Austenitic stainless steel
- M: Martensitic stainless steel
- B: Copper alloy
- P: Polycarbonate
- N: Polyamide
- V: PVC
- A: ABS
- X: Polyacetal
- L: Aluminum

NUTS & WASHERS



*2

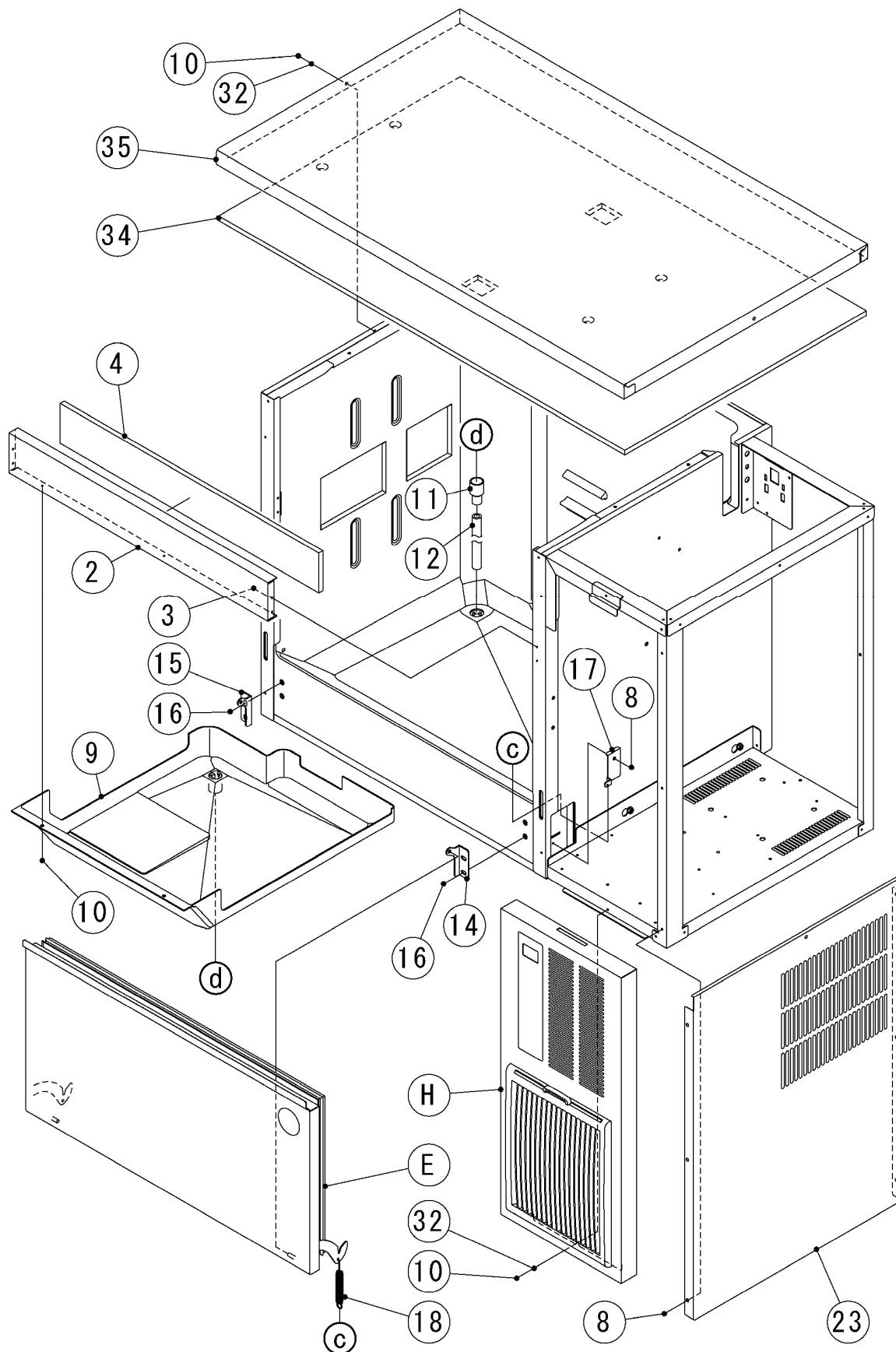
- First letter
- S: Machine screw
- T: Tapping screw
- M: Wood screw
- B: Bolt
- W: Washer
- N: Nut



IM-100CNE (-23, -21)

A. ICE CUBBER ASSY (2/2)

(B-1) and later

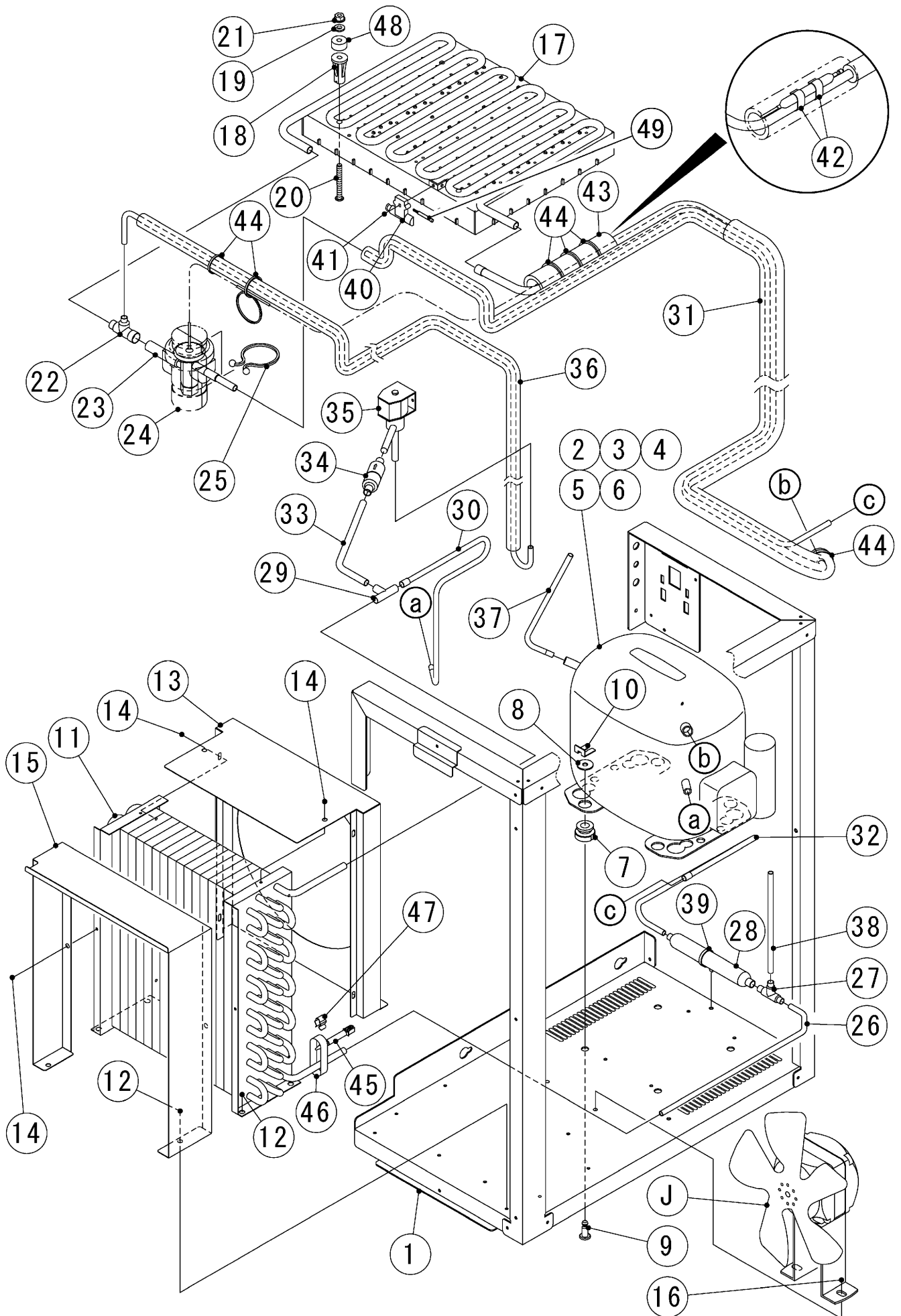


MODEL: IM-100CNE(-23,-21)				TITLE: A.ICE CUBBER ASSY				
INDEX NO.	DESCRIPTION	MATERIAL OR MODEL NUMBER	PART NUMBER	REQ'D NUMBER				
				B-1 G-0	G-1 G-2	G-3 J-0	J-1	J-2
B	REFRIGERATION ASSY		1H5198A01	1	1	-	-	-
			1H6007A01	-	-	1	1	1
		IM-100CNE-21	1H5198A01	1	1	1	1	1
		IM-100CNE-23	1H5198A01	1	1	1	1	-
			1H6007A01	-	-	-	-	1
C	MECHANISM ASSY		2X1206A01	1	1	1	1	1
D	WATER CIRCUIT ASSY		2X1210A01	1	1	1	1	1
E	DOOR ASSY		3Y5436A03	1	1	1	1	1
F	CONTROL BOX ASSY		2X2519A01	1	1	-	-	-
			2X3409A01	-	-	1	-	-
			2X3409A02	-	-	-	1	1
		IM-100CNE-21,-23	2X2519A01	1	1	1	1	-
			2X3409A01	-	-	-	-	1
G	FRONT COVER UPPER ASSY		3Y6321A01	1	1	1	1	1
H	FRONT COVER(R) ASSY		3Y6324A01	1	1	1	1	1
1	BODY		1H5055G01	1	1	1	1	1
2	FRONT FRAME		3Y6326M01	1	1	1	1	1
3	RIVET	SSD41SSBS	7170-0006	4	4	4	4	4
4	INSULATION - FRONT FRAME		4Y7624P01	1	1	1	1	1
5	TAPER COLLAR		4H0171-01	4	4	4	4	4
6	RIVET	SSD42SSBS	7170-0002	4	4	4	4	4
7	TAPPING SCREW - HEX		442040-01	4	4	4	4	4
8	Flange Bolt (C-TITE)		FTR0408M0	19	19	19	19	19
9	DRAIN PAN		2H6143G01	1	1	1	1	1
10	S-TITE TRUSS HEAD SCREW		FTS0408M0	7	7	7	7	7
11	DRAIN TUBE		4H2585-01	1	1	1	1	1
12	DRAIN PIPE		4Y7493P03	1	1	1	1	1
13	SLOPE		3H2978G01	1	1	1	1	1
14	HINGE (RIGHT)		4H2583-01	1	1	1	1	1
15	HINGE (LEFT)		4H2584-01	1	1	1	1	1
16	HEX HEAD BOLT (SPRING WASHER AND FLAT WASHER)		FBK0620S0	4	4	4	4	4
17	BRACKET - SPRING		4Y7620M01	1	1	1	1	1
18	SPRING		4X5209-01	1	1	1	1	1
19	PLATE - FRAME		2X0948M01	1	1	1	1	1
20	T2 TRUSS HEAD SCREW		FT20408F0	2	2	2	2	2

MODEL: IM-100CNE(-23,-21)			TITLE: A.ICE CUBBER ASSY					
INDEX NO.	DESCRIPTION	MATERIAL OR MODEL NUMBER	PART NUMBER	REQ'D NUMBER				
				B-1 G-0	G-1 G-2	G-3 J-0	J-1	J-2
21	TRUSS HEAD SCREW		FST0408S0	2	2	2	2	2
		(KR)		-	-	4	4	4
22	FRONT COVER LOWER		3Y6322G01	1	1	1	1	1
23	SIDE PANEL(R) - UNIT		2X0959M01	1	1	1	1	1
24	REAR PANEL - UNIT		268093M01	1	1	1	1	1
25	INSULATION(A)		4H2683-01	1	1	1	1	1
26	INSULATION(B)		4Y7510P01	1	1	1	1	1
27	CONNECTOR	Except (KOREA)	P00245-02	1	1	1	1	1
28	POWER SUPPLY CORD	EU-PLUG(10A)	P03359-01	1	1	1	1	1
		UK-PLUG(10A)	P03360-01	1	1	1	1	1
		AS-PLUG(10A)	P03361-01	1	1	1	1	1
		KC-PLUG(16A)	P04435-01	-	-	1	1	1
29	COVER - CONNECTOR	Except (KOREA)	2X0271P01	1	1	1	1	1
30	WIRE SADDLE		428060-02	4	4	4	4	4
32	SPRING WASHER		FWSP04S0	5	5	5	5	5
33	LABEL - GROUND(B)		450452-02	1	1	1	1	1
34	INSULATION - TOP		3Y6327P01	1	1	1	1	1
35	TOP PANEL		1H5071M01	1	1	1	1	1
36	NAME PLATE		N/A	1	1	1	1	1
37	TIE		P05042-01	1	1	1	1	1
38	BRACKET - POWER CORD	(KR)	483273M01	-	-	1	1	1
39	BUSHING	(KR)	420472-02	-	-	1	1	1

MODEL: IM-100CNE(-23,-21)				TITLE: A.ICE CUBBER ASSY				
INDEX NO.	DESCRIPTION	MATERIAL OR MODEL NUMBER	PART NUMBER	REQ'D NUMBER				
				J-3				
B	REFRIGERATION ASSY		1H6007A01	1				
		IM-100CNE-21	1H5198A01	-				
			1H6007A01	1				
C	MECHANISM ASSY		2X1206A01	1				
D	WATER CIRCUIT ASSY		2X1210A01	1				
E	DOOR ASSY		3Y5436A03	1				
F	CONTROL BOX ASSY		2X3409A02	1				
		IM-100CNE-21	2X2519A01	-				
			2X3409A01	1				
		IM-100CNE-23	2X3409A01	1				
G	FRONT COVER UPPER ASSY		3Y6321A01	1				
H	FRONT COVER(R) ASSY		3Y6324A01	1				
1	BODY		1H5055G01	1				
2	FRONT FRAME		3Y6326M01	1				
3	RIVET	SSD41SSBS	7170-0006	4				
4	INSULATION - FRONT FRAME		4Y7624P01	1				
5	TAPER COLLAR		4H0171-01	4				
6	RIVET	SSD42SSBS	7170-0002	4				
7	TAPPING SCREW - HEX		442040-01	4				
8	Flange Bolt (C-TITE)		FTR0408M0	19				
9	DRAIN PAN		2H6143G01	1				
10	S-TITE TRUSS HEAD SCREW		FTS0408M0	7				
11	DRAIN TUBE		4H2585-01	1				
12	DRAIN PIPE		4Y7493P03	1				
13	SLOPE		3H2978G01	1				
14	HINGE (RIGHT)		4H2583-01	1				
15	HINGE (LEFT)		4H2584-01	1				
16	HEX HEAD BOLT (SPRING WASHER AND FLAT WASHER)		FBK0620S0	4				
17	BRACKET - SPRING		4Y7620M01	1				
18	SPRING		4X5209-01	1				
19	PLATE - FRAME		2X0948M01	1				
20	T2 TRUSS HEAD SCREW		FT20408F0	2				
21	TRUSS HEAD SCREW		FST0408S0	2				
		(KR)		4				
22	FRONT COVER LOWER		3Y6322G01	1				
23	SIDE PANEL(R) - UNIT		2X0959M01	1				

MODEL: IM-100CNE(-23,-21)				TITLE: A.ICE CUBBER ASSY				
INDEX NO.	DESCRIPTION	MATERIAL OR MODEL NUMBER	PART NUMBER	REQ'D NUMBER				
				J-3				
24	REAR PANEL - UNIT		268093M01	1				
25	INSULATION(A)		4H2683-01	1				
26	INSULATION(B)		4Y7510P01	1				
27	CONNECTOR	Except (KOREA)	P00245-02	1				
28	POWER SUPPLY CORD	EU-PLUG(10A)	P03359-01	1				
		UK-PLUG(10A)	P03360-01	1				
		AS-PLUG(10A)	P03361-01	1				
		KC-PLUG(16A)	P04435-01	1				
29	COVER - CONNECTOR	Except (KOREA)	2X0271P01	1				
30	WIRE SADDLE		428060-02	4				
32	SPRING WASHER		FWSP04S0	5				
33	LABEL - GROUND(B)		450452-02	1				
34	INSULATION - TOP		3Y6327P01	1				
35	TOP PANEL		1H5071M01	1				
36	NAME PLATE		N/A	1				
37	TIE		P05042-01	1				
38	BRACKET - POWER CORD	(KR)	483273M01	1				
39	BUSHING	(KR)	420472-02	1				

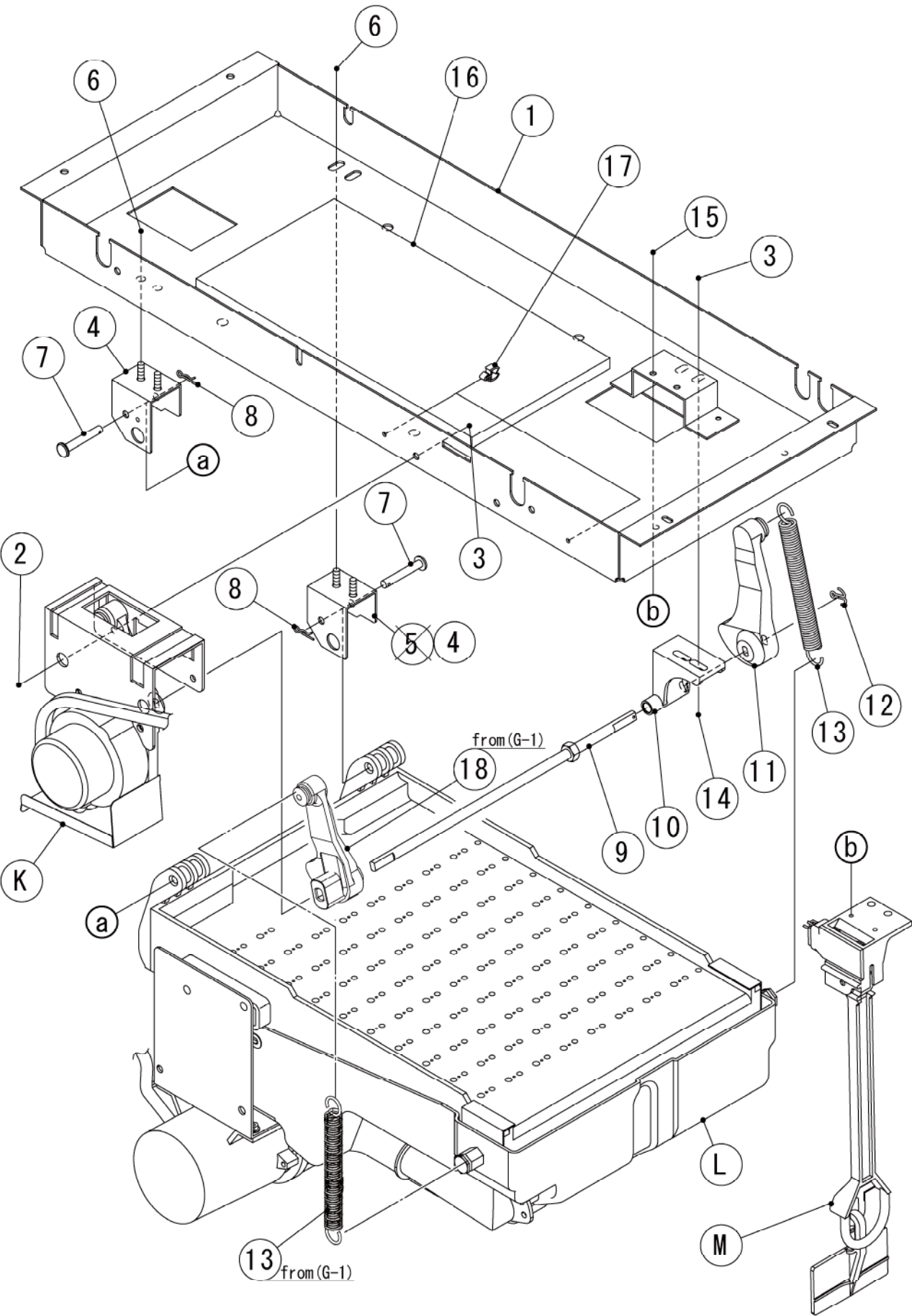


MODEL: IM-100CNE(-23,-21)				TITLE: B. REFRIGERATION ASSY				
INDEX NO.	DESCRIPTION	MATERIAL OR MODEL NUMBER	PART NUMBER	REQ'D NUMBER				
				B-1 G-0	G-1 G-2	G-3 J-0	J-1	J-2
J	FAN MOTOR ASSY		3Y6055A01	1	1	1	1	1
1	UNIT FRAME G		2X1207G01	1	1	1	1	1
2	COMPRESSOR		452236-01	1	1	1	1	1
3	STARTING RELAY		452237-01	1	1	1	1	1
4	START CAPACITOR		456350-01	1	1	1	1	1
5	CORD RELIEF		452239-01	1	1	1	1	1
6	COVER		459924-01	1	1	1	1	1
7	GROMMET		450897-01	4	4	4	4	4
8	WASHER CUSHION		450894-01	4	4	4	4	4
9	STEEL PIN		452255-01	4	4	4	4	4
10	CLIP		452256-01	4	4	4	4	4
11	CONDENSER - AIR COOLED		P03374-01	1	1	1	1	1
12	Flange Bolt (C-TITE)		FTR0408M0	6	6	6	6	6
13	SHROUD(A)		2X0938M01	1	1	1	1	1
14	T2 TRUSS HEAD SCREW		FT20408F0	8	8	8	8	8
15	SHROUD(B)		3Y6296M01	1	1	1	1	1
16	HEX HEAD BOLT		FBK0612F0	2	2	2	2	2
	(SPRING WASHER AND FLAT WASHER)							
17	EVAPORATOR		2H6438G03	1	1	-	-	-
			2X2463G01	-	-	1	1	1
		IM-100CNE for KOREA	2H6438G03	1	1	-	-	-
			2E0064G01	-	-	1	1	1
	EVAPORATOR 23MM	IM-100CNE-23	2H1836G01	1	1	1	1	-
			2X2590G01	-	-	-	-	1
		IM-100CNE-23 for KOREA	2H1836G01	1	1	1	1	-
			2E0066G01	-	-	-	-	1
	EVAPORATOR 21MM	IM-100CNE-21	2H0716G02	1	1	1	1	1
		IM-100CNE-21 for KOREA	2E0068G01	1	1	1	1	1
18	COLLAR		3H3879-01	4	4	4	4	4
19	WASHER		4H0777-01	4	4	4	4	4
20	SCREW EVAPORATOR		4Y4922M02	4	4	4	4	4
		IM-100CNE-23,-21	4Y4922M03	4	4	4	4	4
21	FLANGE NUT		FNHF06S0	4	4	4	4	4
22	TEE	IM-100CNE,-23	420335-01	1	1	1	1	1
23	EXPANSION VALVE		P00650-01	1	1	1	1	1
24	VALVE COVER		3Y3051P01	1	1	1	1	1
25	CLAMP		P00752-01	2	2	2	2	2

MODEL: IM-100CNE(-23,-21)				TITLE: B.REFRIGERATION ASSY				
INDEX NO.	DESCRIPTION	MATERIAL OR MODEL NUMBER	PART NUMBER	REQ'D NUMBER				
				B-1 G-0	G-1 G-2	G-3 J-0	J-1	J-2
26	COPPER TUBE(B) - HIGH SIDE		4Y7588M01	1	1	1	1	1
27	TEE		456655-01	1	1	1	1	1
28	DRIER		458776-01	1	1	1	1	1
29	TEE		420041-11	1	1	1	1	1
30	COPPER TUBE(A) - HIGT SIDE		4Y7589M01	1	1	1	1	1
31	HEAT EXCHANGER		2X1208G01	1	1	1	1	1
32	COPPER TUBE(C) - HIGH SIDE		4Y7590M01	1	1	1	1	1
33	COPPER TUBE(A) - HOT GAS		4Y7591M01	1	1	1	1	1
34	STRAINER		P00812-01	1	1	1	1	1
35	HOT GAS VALVE		P04242-01	1	1	1	1	1
		(KR) 60Hz	P01871-01	-	-	1	1	1
36	COPPER TUBE(B) - HOT GAS		2X0930G01	1	1	1	1	1
37	PROCESS TUBE		4X4047-01	1	1	1	1	1
38	PROCESS TUBE		4Y0273-01	1	1	1	1	1
39	TIE		P05042-01	1	1	1	1	1
40	HOLDER - THERMISTOR		315479-01	1	1	1	1	1
41	S-TITE TRUSS HEAD SCREW		FTS0408M0	1	1	1	1	1
42	CLIP		452254-01	2	2	2	2	2
43	INSULATION		4X8643-01	1	1	1	1	1
44	TIE	CV-150	7920-0003	6	6	6	6	6
45	THERMISTOR(G) - FILTER		4Y4859G01	1	1	1	1	1
46	ALUMINUM TAPE		1H5198-01	1	1	1	1	1
47	CLIP - THERMISTOR		4R2938-01	1	1	1	1	1
48	WASHER	IM-100CNE-23	4H1365-05	4	4	4	4	4
		IM-100CNE-21	4H1365-06	4	4	4	4	4
49	THERMISTOR - CUBE CONTROL		P00350-03	1	1	1	1	1

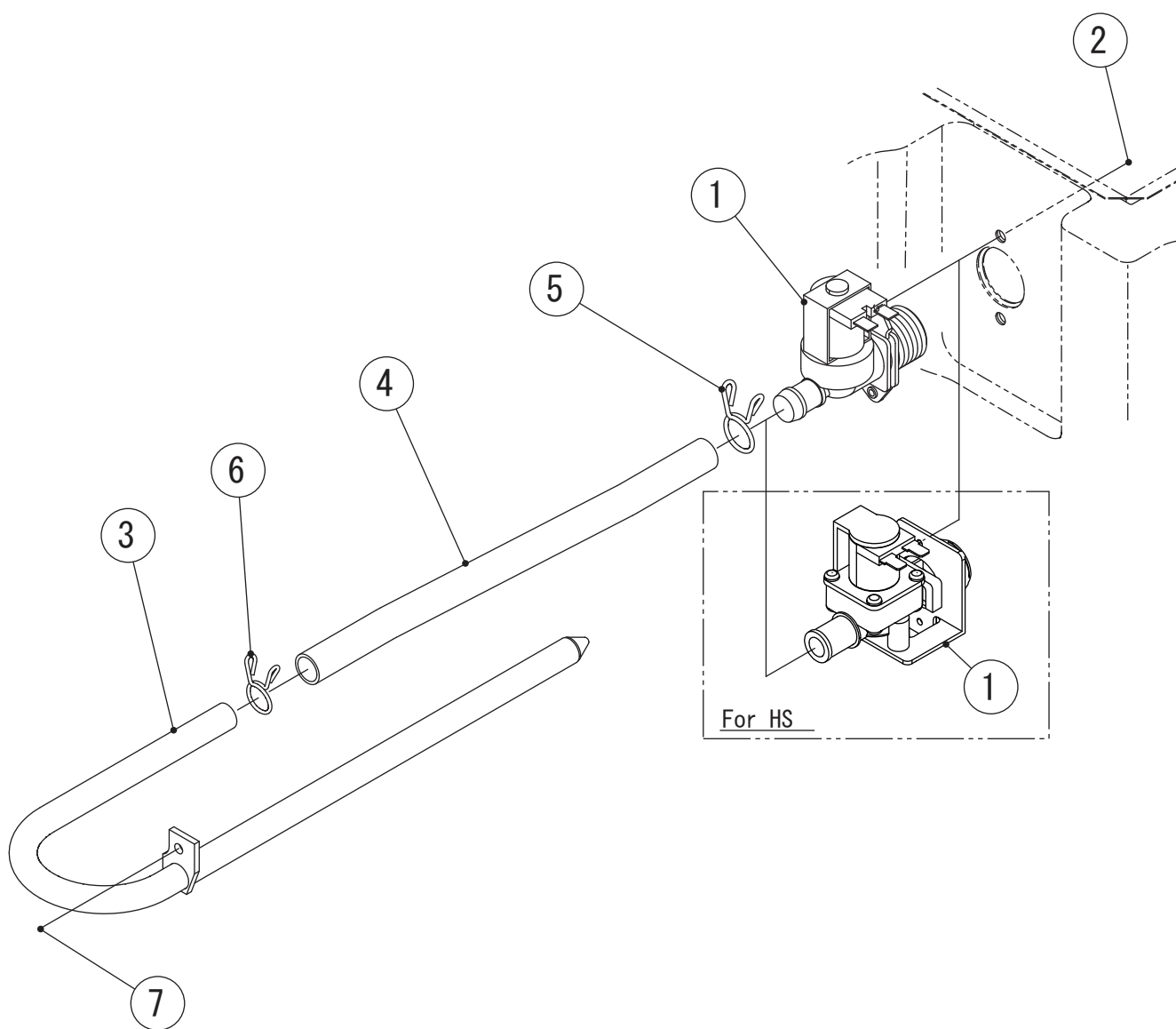
MODEL: IM-100CNE(-23,-21)				TITLE: B.REFRIGERATION ASSY				
INDEX NO.	DESCRIPTION	MATERIAL OR MODEL NUMBER	PART NUMBER	REQ'D NUMBER				
				J-3				
J	FAN MOTOR ASSY		3Y6055A01	1				
1	UNIT FRAME G		2X1207G01	1				
2	COMPRESSOR		452236-01	1				
3	STARTING RELAY		452237-01	1				
4	START CAPACITOR		456350-01	1				
5	CORD RELIEF		452239-01	1				
6	COVER		459924-01	1				
7	GROMMET		450897-01	4				
8	WASHER CUSHION		450894-01	4				
9	STEEL PIN		452255-01	4				
10	CLIP		452256-01	4				
11	CONDENSER - AIR COOLED		P03374-01	1				
12	Flange Bolt (C-TITE)		FTR0408M0	6				
13	SHROUD(A)		2X0938M01	1				
14	T2 TRUSS HEAD SCREW		FT20408F0	8				
15	SHROUD(B)		3Y6296M01	1				
16	HEX HEAD BOLT		FBK0612F0	2				
	(SPRING WASHER AND FLAT WASHER)							
17	EVAPORATOR		2X2463G01	1				
		IM-100CNE for KOREA IM-100NE-SN	2E0064G01	1				
	EVAPORATOR 23MM	IM-100CNE-23	2X2590G01	1				
		IM-100CNE-23 for KOREA	2E0066G01	1				
	EVAPORATOR	IM-100CNE-21	2H0716G02	-				
			2X2541G01	1				
		IM-100CNE-21 for KOREA	2H0716G02	-				
			2E0068G01	1				
18	COLLAR		3H3879-01	4				
19	WASHER		4H0777-01	4				
20	SCREW EVAPORATOR		4Y4922M02	4				
		IM-100CNE-23,-21	4Y4922M03	4				
21	FLANGE NUT		FNHF06S0	4				
22	TEE	IM-100CNE,-23	420335-01	1				
23	EXPANSION VALVE		P00650-01	1				
24	VALVE COVER		3Y3051P01	1				
25	CLAMP		P00752-01	2				
26	COPPER TUBE(B) - HIGH SIDE		4Y7588M01	1				

MODEL: IM-100CNE(-23,-21)				TITLE: B.REFRIGERATION ASSY				
INDEX NO.	DESCRIPTION	MATERIAL OR MODEL NUMBER	PART NUMBER	REQ'D NUMBER				
				J-3				
27	TEE		456655-01	1				
28	DRIER		458776-01	1				
29	TEE		420041-11	1				
30	COPPER TUBE(A) - HIGT SIDE		4Y7589M01	1				
31	HEAT EXCHANGER		2X1208G01	1				
32	COPPER TUBE(C) - HIGH SIDE		4Y7590M01	1				
33	COPPER TUBE(A) - HOT GAS		4Y7591M01	1				
34	STRAINER		P00812-01	1				
35	HOT GAS VALVE		P04242-01	1				
		(KR) 60Hz	P01871-01	1				
36	COPPER TUBE(B) - HOT GAS		2X0930G01	1				
37	PROCESS TUBE		4X4047-01	1				
38	PROCESS TUBE		4Y0273-01	1				
39	TIE		P05042-01	1				
40	HOLDER - THERMISTOR		315479-01	1				
41	S-TITE TRUSS HEAD SCREW		FTS0408M0	1				
42	CLIP		452254-01	2				
43	INSULATION		4X8643-01	1				
44	TIE	CV-150	7920-0003	6				
45	THERMISTOR(G) - FILTER		4Y4859G01	1				
46	ALUMINUM TAPE		1H5198-01	1				
47	CLIP - THERMISTOR		4R2938-01	1				
48	WASHER	IM-100CNE-23	4H1365-05	4				
		IM-100CNE-21	4H1365-06	4				
49	THERMISTOR - CUBE CONTROL		P00350-03	1				



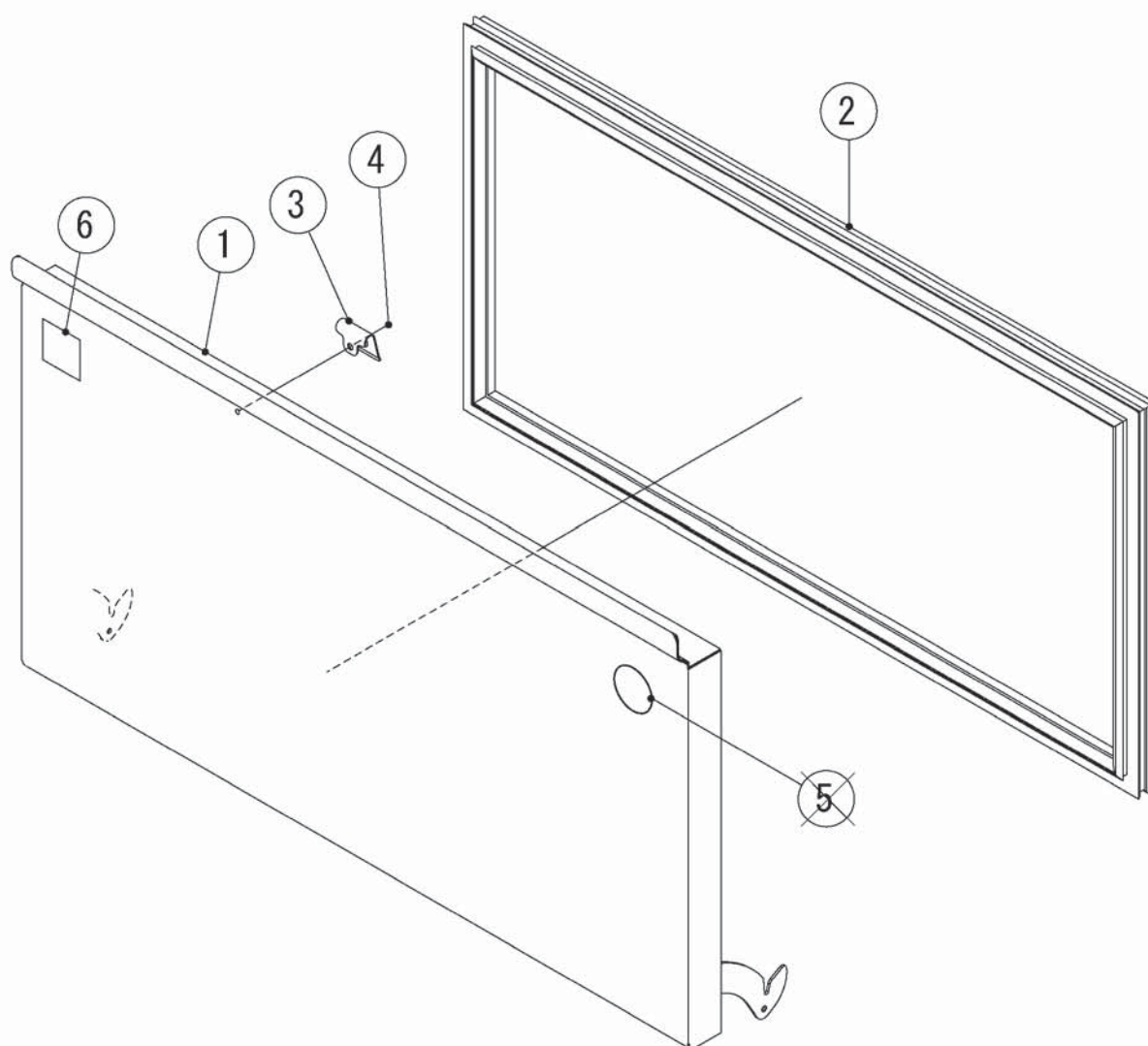
MODEL: IM-100CNE(-23,-21)				TITLE: C.MECHANISM ASSY				
INDEX NO.	DESCRIPTION	MATERIAL OR MODEL NUMBER	PART NUMBER	REQ'D NUMBER				
				B-1 G-0	G-1 G-2	G-3 J-0	J-1	J-2
K	ACTUATOR MOTOR ASSY		3Y8847A02	1	-	-	-	-
			3Y9860A01	-	1	1	1	1
L	WATER PAN ASSY		2X0844A01	1	1	1	1	1
M	BIN CONTROL SWITCH		3H1538A02	1	1	1	1	1
1	MECHANISM BASE		3Y6726G01	1	1	1	1	1
		IM-100CNE-21	3Y6879G01	1	1	1	1	1
2	TRUSS HEAD MACHINE SCREW		FST0512S0	2	2	2	2	2
3	FLANGE NUT		FNHF05S0	4	4	4	4	4
4	BEARING PLATE		3H1440G03	2	2	2	2	2
5	BEARING PLATE		3H1440G04	-	-	-	-	-
6	FLANGE NUT		FNHF06S0	4	4	4	4	4
7	SHAFT(B)		4H1184-02	2	2	2	2	2
8	SNAP PIN		715S-0006	2	2	2	2	2
9	CAM SHAFT		4H2702G02	1	1	1	1	1
10	BEARING - CAM SHAFT		3X8307-02	1	1	1	1	1
11	CAM(B)		376546P01	1	1	1	1	1
12	CUTTER PIN		711S-0212	1	1	1	1	1
13	SPRING		4H0287-01	1	2	2	2	2
14	HEX HEAD BOLT		FBK0516S0	2	2	2	2	2
15	T2 TRUSS HEAD SCREW		FT20410S0	2	2	2	2	2
16	INSULATION(D)		4Y7504P01	1	1	1	1	1
17	CLAMP		426197-01	2	2	2	2	2
18	CAM (A)		306543G04	-	1	1	1	1

MODEL: IM-100CNE(-23,-21)			TITLE:C.MECHANISM ASSY					
INDEX NO.	DESCRIPTION	MATERIAL OR MODEL NUMBER	PART NUMBER	REQ'D NUMBER				
				J-3				
K	ACTUATOR MOTOR ASSY		3Y9860A01	1				
L	WATER PAN ASSY		2X0844A01	1				
M	BIN CONTROL SWITCH		3H1538A02	1				
1	MECHANISM BASE		3Y6726G01	1				
		IM-100CNE-21	3Y6879G01	1				
2	TRUSS HEAD MACHINE SCREW		FST0512S0	2				
3	FLANGE NUT		FNHF05S0	4				
4	BEARING PLATE		3H1440G03	2				
5	BEARING PLATE		3H1440G04	-				
6	FLANGE NUT		FNHF06S0	4				
7	SHAFT(B)		4H1184-02	2				
8	SNAP PIN		715S-0006	2				
9	CAM SHAFT		4H2702G02	1				
10	BEARING - CAM SHAFT		3X8307-02	1				
11	CAM(B)		376546P01	1				
12	CUTTER PIN		711S-0212	1				
13	SPRING		4H0287-01	2				
14	HEX HEAD BOLT		FBK0516S0	2				
15	T2 TRUSS HEAD SCREW		FT20410S0	2				
16	INSULATION(D)		4Y7504P01	1				
17	CLAMP		426197-01	2				
18	CAM (A)		306543G04	1				



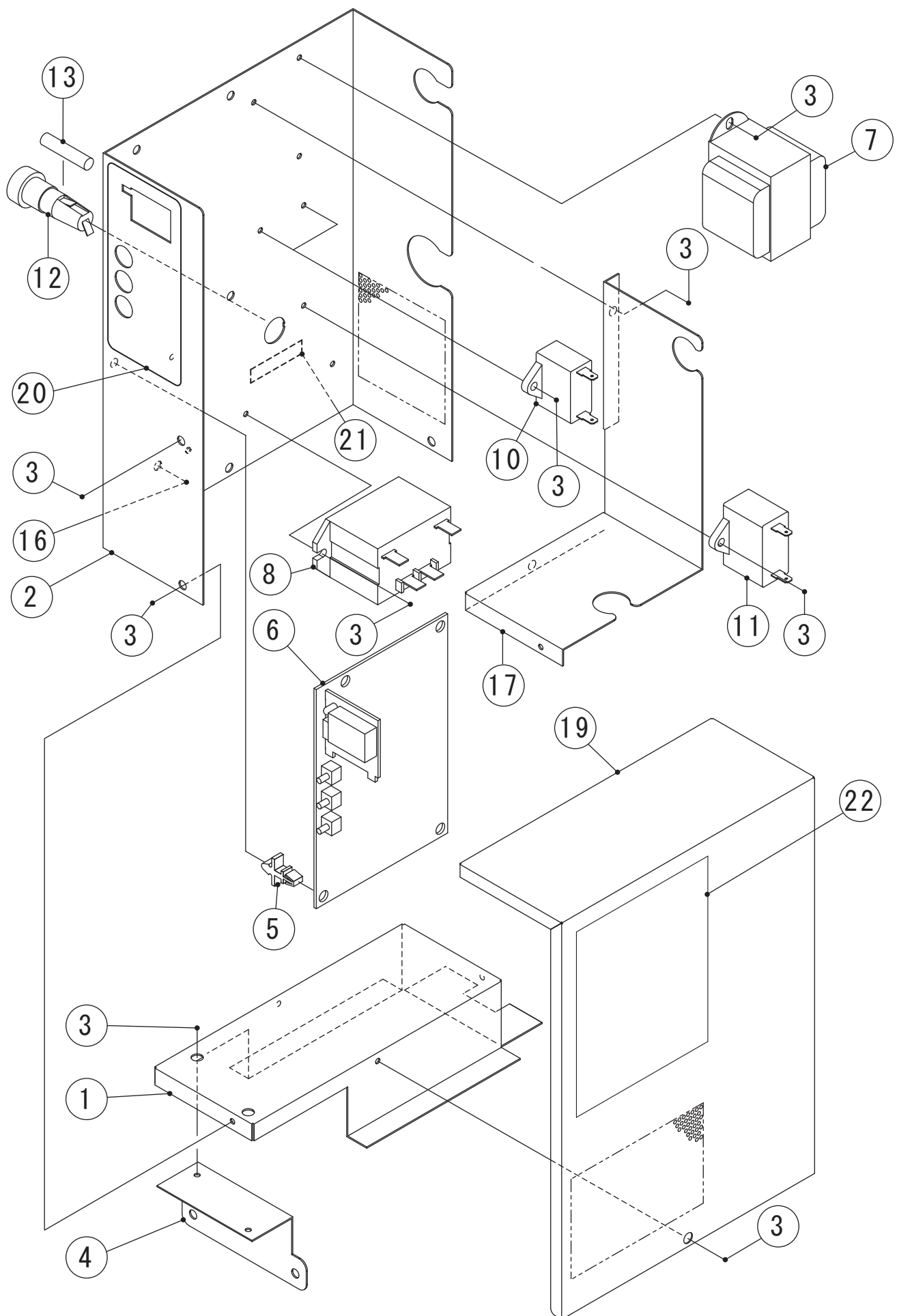
MODEL: IM-100CNE(-23,-21)				TITLE: D.WATER CIRCUIT ASSY				
INDEX NO.	DESCRIPTION	MATERIAL OR MODEL NUMBER	PART NUMBER	REQ'D NUMBER				
				B-1 G-0	G-1 G-2	G-3 J-0	J-1	J-2
1	WATER VALVE		P05355-01	1	1	1	1	1
	WATER VALVE	KR Only	P02056-01	1	1	1	1	1
	WATER VALVE ASSY	HS Only	4Z0427A01	1	1	1	1	1
2	HEX HEAD BOLT SW		FBF0408S0	2	2	2	2	2
3	WATER SUPPLY PIPE		3H9532G01	1	1	1	1	1
4	SILICONE HOSE		4Y6912R08	1	1	1	1	1
5	HOSE CLAMP		435934-03	1	1	1	1	1
6	HOSE CLAMP		435934-02	1	1	1	1	1
7	TRUSS HEAD SCREW		FST0408S0	1	1	1	1	1

MODEL: IM-100CNE(-23,-21)				TITLE: D.WATER CIRCUIT ASSY				
INDEX NO.	DESCRIPTION	MATERIAL OR MODEL NUMBER	PART NUMBER	REQ'D NUMBER				
				J-3				
1	WATER VALVE		P05355-01	1				
	WATER VALVE	KR Only	P02056-01	1				
	WATER VALVE ASSY	HS Only	4Z0427A01	1				
2	HEX HEAD BOLT SW		FBF0408S0	2				
3	WATER SUPPLY PIPE		3H9532G01	1				
4	SILICONE HOSE		4Y6912R08	1				
5	HOSE CLAMP		435934-03	1				
6	HOSE CLAMP		435934-02	1				
7	TRUSS HEAD SCREW		FST0408S0	1				



MODEL: IM-100CNE(-23,-21)				TITLE:E.DOOR ASSY				
INDEX NO.	DESCRIPTION	MATERIAL OR MODEL NUMBER	PART NUMBER	REQ'D NUMBER				
				B-1 G-0	G-1 G-2	G-3 J-0	J-1	J-2
1	DOOR G		3Y5435G01	1	1	1	1	1
2	DOOR GASKET		3Y8291P04	1	1	1	1	1
3	CATCH - SLOPE		4X7644-01	1	1	1	1	1
4	T2 TRUSS HEAD SCREW		FT20408S0	1	1	1	1	1
5	LABEL - PENGUIN		471486L01	-	-	-	-	-
6	LABEL - HACCP		476519L01	1	1	1	1	1

MODEL: IM-100CNE(-23,-21)				TITLE: E.DOOR ASSY				
INDEX NO.	DESCRIPTION	MATERIAL OR MODEL NUMBER	PART NUMBER	REQ'D NUMBER				
				J-3				
1	DOOR G		3Y5435G01	1				
2	DOOR GASKET		3Y8291P04	1				
3	CATCH - SLOPE		4X7644-01	1				
4	T2 TRUSS HEAD SCREW		FT20408S0	1				
6	LABEL - HACCP		476519L01	1				

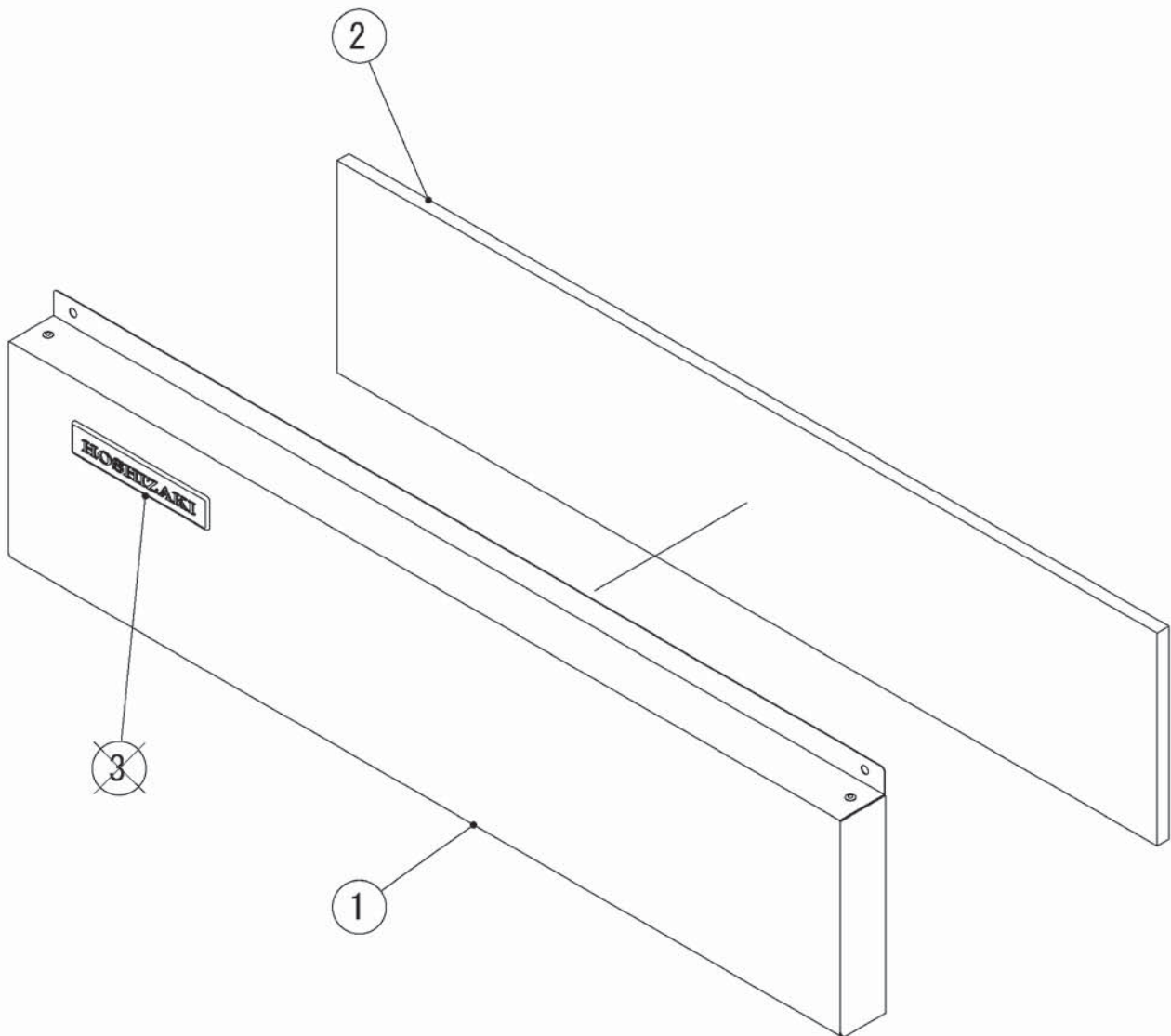


MODEL: IM-100CNE(-23,-21)				TITLE: F.CONTROL BOX ASSY				
INDEX NO.	DESCRIPTION	MATERIAL OR MODEL NUMBER	PART NUMBER	REQ'D NUMBER				
				B-1 G-0	G-1 G-2	G-3 J-0	J-1	J-2
1	CONTROL BOX(A)		3Y9037M01	1	1	1	1	1
2	CONTROL BOX(B)		2X1251M01	1	1	1	1	1
3	T2 TRUSS HEAD SCREW		FT20410F0	16	16	16	16	16
4	PLATE - BOX		4Y7215M01	1	1	1	1	1
5	BOARD SUPPORT		P04204-01	4	4	4	4	4
6	CONTROLLER BOARD		P01873-01	1	1	-	-	-
			P01873-02	-	-	1	1	1
		IM-100CNE-23	P01873-01	1	1	1	1	-
			P01873-02	-	-	-	-	1
		IM-100CNE-21	P01873-01	1	1	1	1	1
7	TRANSFORMER		P02714-01	1	1	1	1	1
8	POWER RELAY		P00034-01	1	1	1	1	1
10	CAPACITOR		P01870-01	2	2	2	2	2
11	CAPACITOR		P01910-01	1	1	1	1	1
12	FUSE HOLDER		P02829-01	1	1	1	1	1
13	FUSE		P04203-01	1	1	1	1	1
16	TRUSS HEAD SCREW		FST0408S0	1	1	1	1	1
17	SEPARATOR - BOX		3Y6512M01	1	1	1	1	1
19	CONTROL BOX COVER		3Y6513M01	1	1	1	1	1
20	CONTROL LABEL		475642L01	1	1	1	-	-
	CONTROL LABEL(A)		481284L01	-	-	-	1	1
21	LABEL - FUSE		466798-01	1	1	1	1	1
22	WIRING LABEL		3Y6137L01	1	1	1	1	1

MODEL: IM-100CNE(-23,-21)				TITLE: F.CONTROL BOX ASSY				
INDEX NO.	DESCRIPTION	MATERIAL OR MODEL NUMBER	PART NUMBER	REQ'D NUMBER				
				J-3				
1	CONTROL BOX(A)		3Y9037M01	1				
2	CONTROL BOX(B)		2X1251M01	1				
3	T2 TRUSS HEAD SCREW		FT20410F0	16				
4	PLATE - BOX		4Y7215M01	1				
5	BOARD SUPPORT		P04204-01	4				
6	CONTROLLER BOARD		P01873-02	1				
		IM-100CNE-21	P01873-01	-				
			P01873-02	1				
7	TRANSFORMER		P02714-01	1				
8	POWER RELAY		P00034-01	1				
10	CAPACITOR		P01870-01	2				
11	CAPACITOR		P01910-01	1				
12	FUSE HOLDER		P02829-01	1				
13	FUSE		P04203-01	1				
16	TRUSS HEAD SCREW		FST0408S0	1				
17	SEPARATOR - BOX		3Y6512M01	1				
19	CONTROL BOX COVER		3Y6513M01	1				
20	CONTROL LABEL		475642L01	-				
	CONTROL LABEL(A)		481284L01	1				
21	LABEL - FUSE		466798-01	1				
22	WIRING LABEL		3Y6137L01	1				

IM-100CNE (-23, -21)

G. FRONT COVER UPPER ASSY (B-1) and later



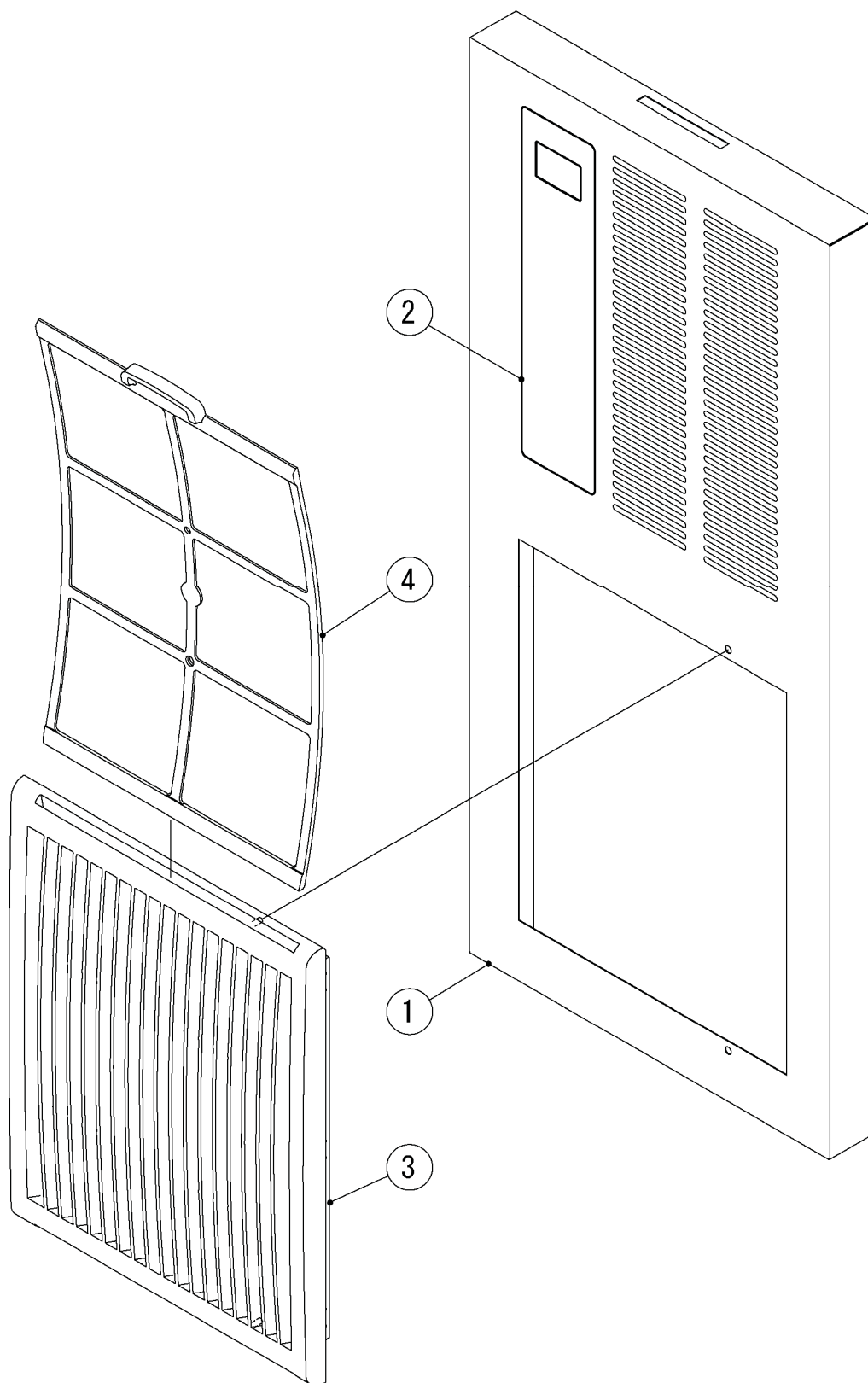
MODEL: IM-100CNE(-23,-21)				TITLE: G.FRONT COVER UPPER ASSY				
INDEX NO.	DESCRIPTION	MATERIAL OR MODEL NUMBER	PART NUMBER	REQ'D NUMBER				
				B-1 G-0	G-1 G-2	G-3 J-0	J-1	J-2
1	FRONT COVER UPPER		3Y6320G01	1	1	1	1	1
2	INSULATION - FRONT(A)		4Y7621P01	1	1	1	1	1
3	EMBLEM		340842-01	-	-	-	-	-

MODEL: IM-100CNE(-23,-21)				TITLE:G.FRONT COVER UPPER ASSY				
INDEX NO.	DESCRIPTION	MATERIAL OR MODEL NUMBER	PART NUMBER	REQ'D NUMBER				
				J-3				
1	FRONT COVER UPPER		3Y6320G01	1				
2	INSULATION - FRONT(A)		4Y7621P01	1				

IM-100CNE (-23, -21)

H. FRONT COVER (R) ASSY

(B-1) and later



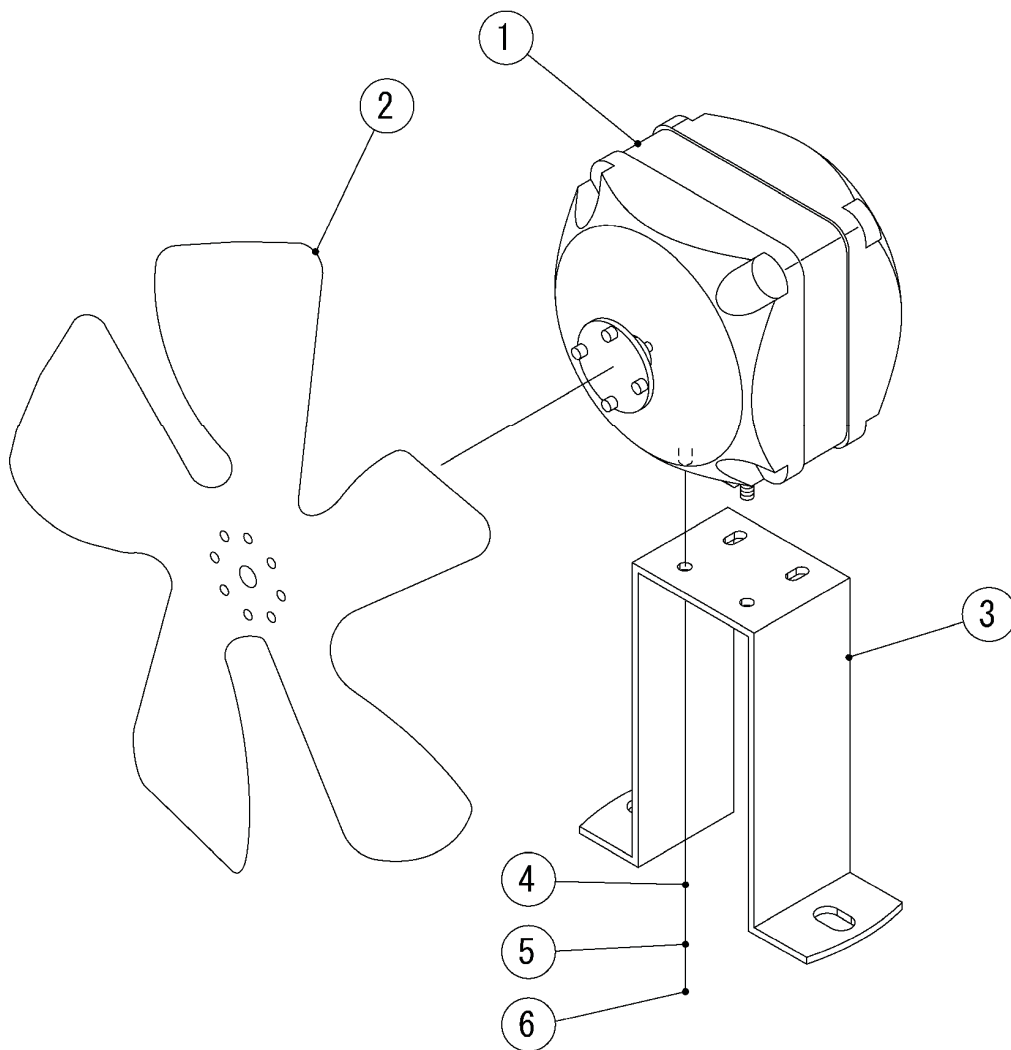
MODEL: IM-100CNE(-23,-21)				TITLE:H.FRONT COVER(R) ASSY				
INDEX NO.	DESCRIPTION	MATERIAL OR MODEL NUMBER	PART NUMBER	REQ'D NUMBER				
				B-1 G-0	G-1 G-2	G-3 J-0	J-1	J-2
1	FRONT COVER(R)		3Y6323G01	1	1	1	1	1
2	OPERATION LABEL		383148L01	1	1	1	1	1
3	LOUVER		1H4811P01	1	1	1	1	1
4	AIR FILTER		2X0416G01	1	1	1	1	1

MODEL: IM-100CNE(-23,-21)				TITLE:H.FRONT COVER(R) ASSY				
INDEX NO.	DESCRIPTION	MATERIAL OR MODEL NUMBER	PART NUMBER	REQ'D NUMBER				
				J-3				
1	FRONT COVER(R)		3Y6323G01	1				
2	OPERATION LABEL		383148L01	1				
3	LOUVER		1H4811P01	1				
4	AIR FILTER		2X0416G01	1				

IM-100CNE (-23, -21)

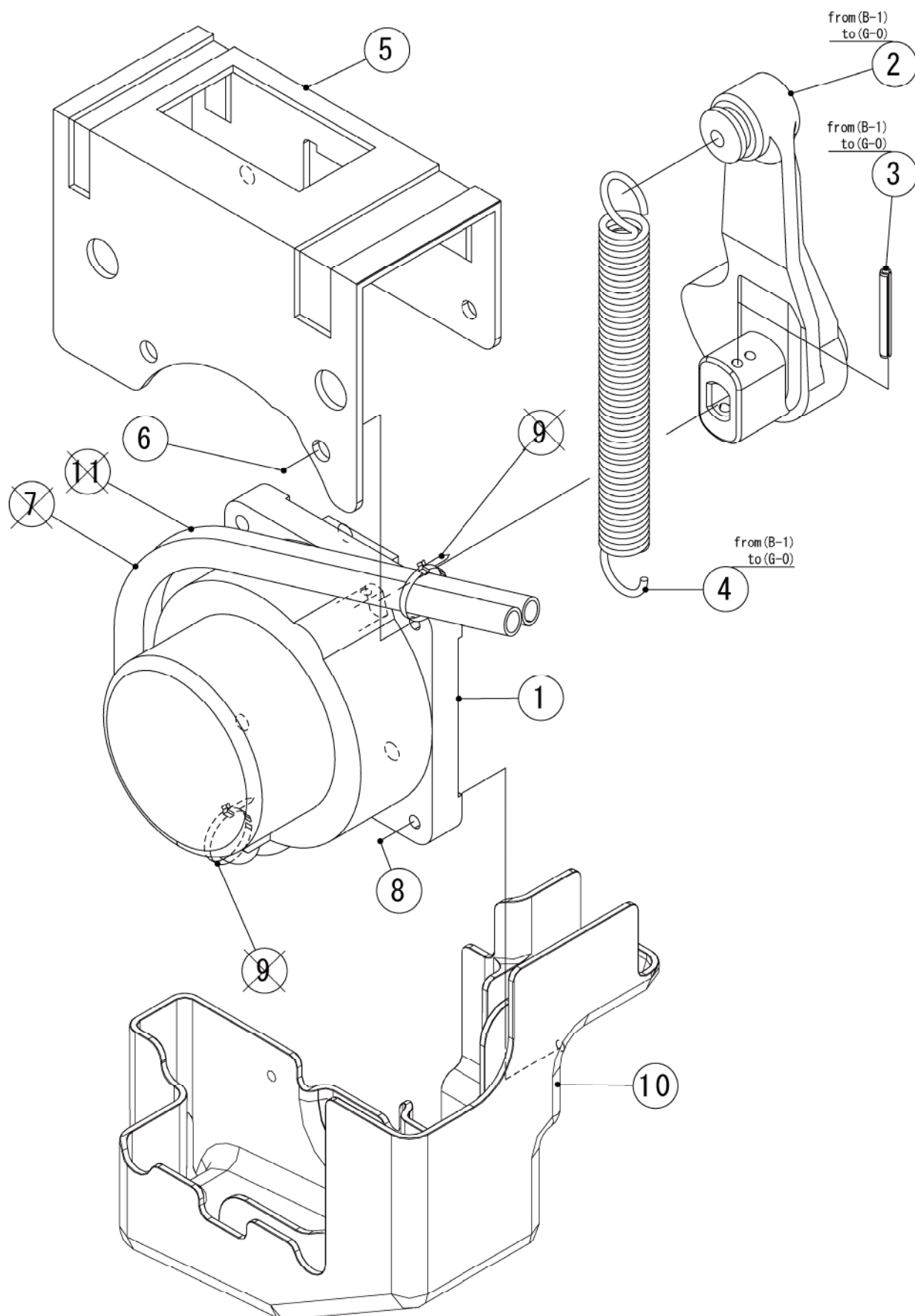
J. FAN MOTOR ASSY

(B-1) and later



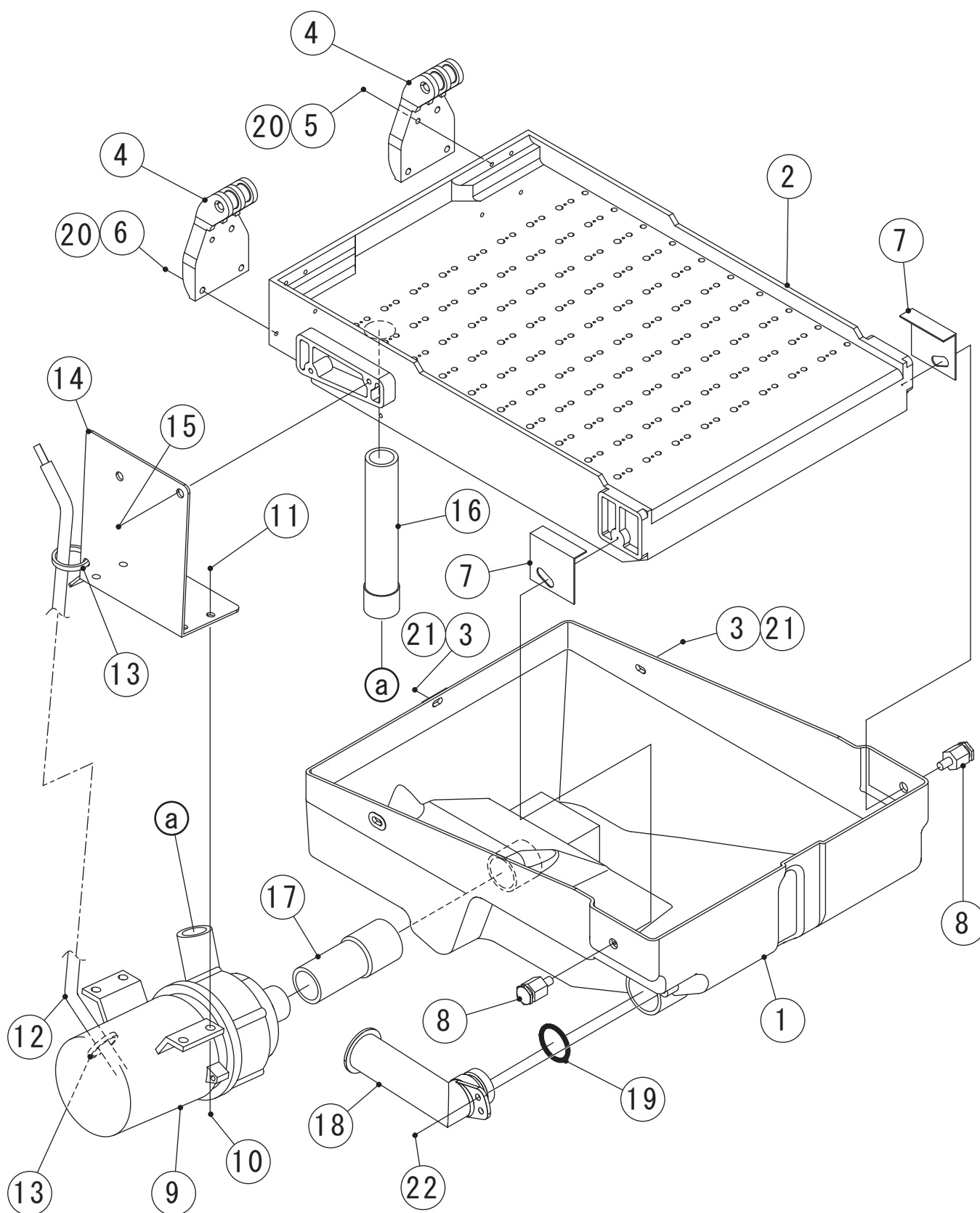
MODEL: IM-100CNE(-23,-21)				TITLE: J.FAN MOTOR ASSY				
INDEX NO.	DESCRIPTION	MATERIAL OR MODEL NUMBER	PART NUMBER	REQ'D NUMBER				
				B-1 G-0	G-1 G-2	G-3 J-0	J-1	J-2
1	FAN MOTOR		P00022-01	1	1	1	1	1
2	FAN		P00031-01	1	1	1	1	1
3	BRACKET - FM		3Y6143M01	1	1	1	1	1
4	FLAT WASHER		FWPL04S0	2	2	2	2	2
5	SPRING WASHER		FWSP04S0	2	2	2	2	2
6	NUT		FNH104S0	2	2	2	2	2

MODEL: IM-100CNE(-23,-21)				TITLE: J.FAN MOTOR ASSY				
INDEX NO.	DESCRIPTION	MATERIAL OR MODEL NUMBER	PART NUMBER	REQ'D NUMBER				
				J-3				
1	FAN MOTOR		P00022-01	1				
2	FAN		P00031-01	1				
3	BRACKET - FM		3Y6143M01	1				
4	FLAT WASHER		FWPL04S0	2				
5	SPRING WASHER		FWSP04S0	2				
6	NUT		FNH104S0	2				



MODEL: IM-100CNE(-23,-21)				TITLE: K.ACTUATOR MOTOR ASSY				
INDEX NO.	DESCRIPTION	MATERIAL OR MODEL NUMBER	PART NUMBER	REQ'D NUMBER				
				B-1 G-0	G-1 G-2	G-3 J-0	J-1	J-2
1	ACTUATOR MOTOR		4Y8998G01	1	1	1	1	1
2	CAM(A)		306543G03	1	-	-	-	-
3	SPRING PIN 3*28		712S-0328	1	-	-	-	-
4	SPRING		4H0287-01	1	-	-	-	-
5	BRACKET - AM		3Y2924M01	1	1	1	1	1
6	HEX HEAD BOLT (SPRING WASHER AND FLAT WASHER)		FBK0620S0	2	2	2	2	2
7	TUBE - SILICONE		4Y6751Z08	-	-	-	-	-
8	T2 TRUSS HEAD SCREW		FT20416S0	2	2	2	2	2
9	TIE	CV-150	7920-0003	-	-	-	-	-
10	COVER - ACTUATOR MOTOR		1H4881P01	1	1	1	1	1
11	TUBE - SILICONE		4X8017-07	-	-	-	-	-

MODEL: IM-100CNE(-23,-21)				TITLE: K.ACTUATOR MOTOR ASSY				
INDEX NO.	DESCRIPTION	MATERIAL OR MODEL NUMBER	PART NUMBER	REQ'D NUMBER				
				J-3				
1	ACTUATOR MOTOR		4Y8998G01	1				
5	BRACKET - AM		3Y2924M01	1				
6	HEX HEAD BOLT (SPRING WASHER AND FLAT WASHER)		FBK0620S0	2				
8	T2 TRUSS HEAD SCREW		FT20416S0	2				
10	COVER - ACTUATOR MOTOR		1H4881P01	1				



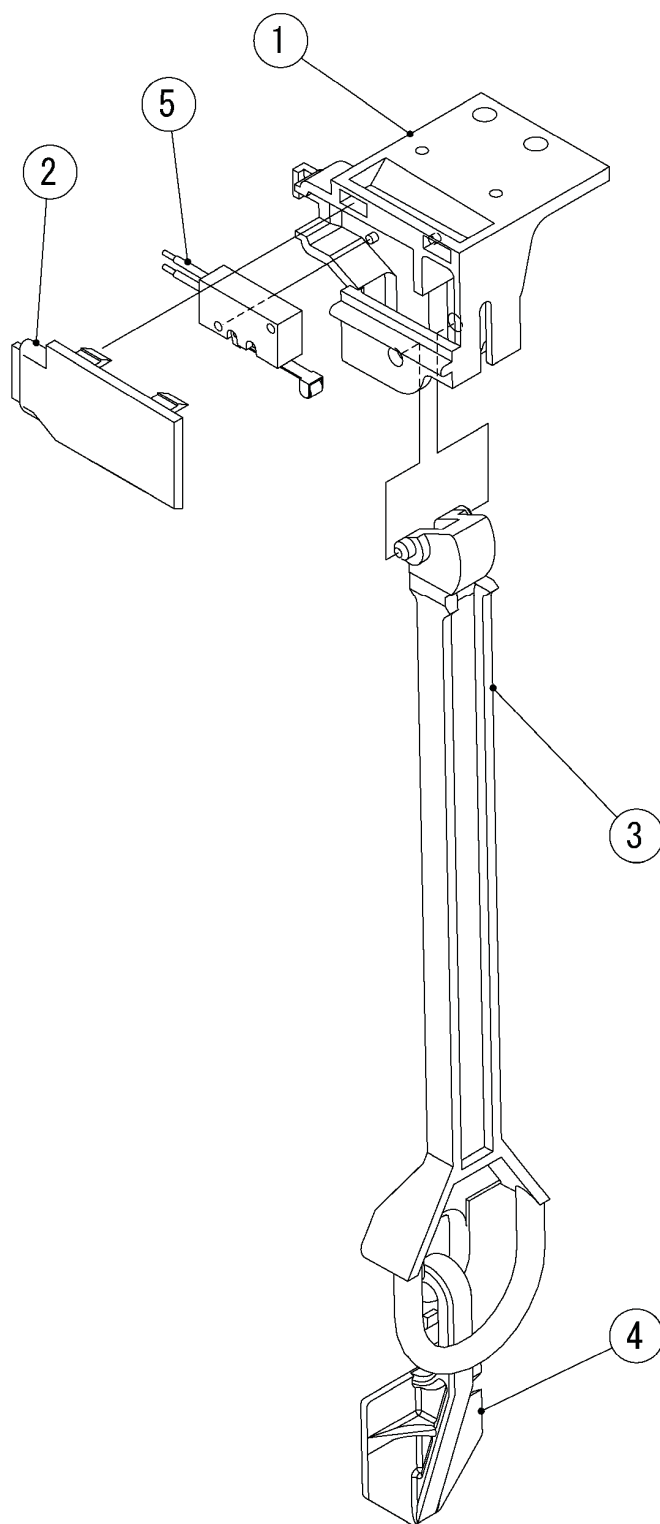
MODEL: IM-100CNE(-23,-21)				TITLE: L.WATER PAN ASSY				
INDEX NO.	DESCRIPTION	MATERIAL OR MODEL NUMBER	PART NUMBER	REQ'D NUMBER				
				B-1 G-0	G-1 G-2	G-3 J-0	J-1	J-2
1	WATER TANK		2H2286G01	1	1	1	1	1
2	WATER PLATE		2H0833G02	1	1	1	1	1
	WATER PLATE	IM-100CNE-21	1H0291G01	1	1	1	1	1
3	T2 TRUSS HEAD SCREW	IM-100CNE,-23	FT20410S0	3	3	3	3	3
4	WATER PAN HANGER		3H2059-01	2	2	2	2	2
5	TRUSS HEAD TAPPING SCREW T2	IM-100CNE,-23	FT20420S0	4	4	4	4	4
6	T2 TRUSS HEAD SCREW	IM-100CNE,-23	FT20416S0	4	4	4	4	4
7	BRACKET		402957-01	2	2	2	2	2
8	SCREW SPRING HOOK		4H2582G01	2	2	2	2	2
9	PUMP MOTOR	PMX-352BHZ1S	P02715-01	1	1	1	1	1
10	HEX HEAD BOLT (SPRING WASHER AND FLAT WASHER)		FBK0412S0	4	4	4	4	4
11	FLANGE NUT		FNHF04S0	4	4	4	4	4
12	TUBE - SILICONE		4Y6751Z10	1	1	1	1	1
13	TIE	CV-100	7920-0002	2	2	2	2	2
14	BRACKET - PUMP		4Y7503M01	1	1	1	1	1
15	TRUSS HEAD TAPPING SCREW T2		FT20516S0	2	2	2	2	2
	TRUSS HEAD MACHINE SCREW	IM-100CNE-21	FST0516S0	2	2	2	2	2
16	TUBING - PUMP DISCHARGE		4E0020R01	1	1	1	1	1
17	SUCTION TUBE		4E0019G01	1	1	1	1	1
18	PIPE - DRAIN		315530-01	1	1	1	1	1
19	O-RING		7611-G025	1	1	1	1	1
20	TRUSS HEAD MACHINE SCREW	IM-100CNE-21	FST0420S0	8	8	8	8	8
21	TRUSS HEAD SCREW	IM-100CNE-21	FST0408S0	3	3	3	3	3
22	TRUSS HEAD SCREW		FST0412S0	1	1	1	1	1

MODEL: IM-100CNE(-23,-21)				TITLE:L.WATER PAN ASSY				
INDEX NO.	DESCRIPTION	MATERIAL OR MODEL NUMBER	PART NUMBER	REQ'D NUMBER				
				J-3				
1	WATER TANK		2H2286G01	1				
2	WATER PLATE		2H0833G02	1				
	WATER PLATE	IM-100CNE-21	1H0291G01	1				
3	T2 TRUSS HEAD SCREW	IM-100CNE,-23	FT20410S0	3				
4	WATER PAN HANGER		3H2059-01	2				
5	TRUSS HEAD TAPPING SCREW T2	IM-100CNE,-23	FT20420S0	4				
6	T2 TRUSS HEAD SCREW	IM-100CNE,-23	FT20416S0	4				
7	BRACKET		402957-01	2				
8	SCREW SPRING HOOK		4H2582G01	2				
9	PUMP MOTOR	PMX-352BHZ1S	P02715-01	1				
10	HEX HEAD BOLT (SPRING WASHER AND FLAT WASHER)		FBK0412S0	4				
11	FLANGE NUT		FNHF04S0	4				
12	TUBE - SILICONE		4Y6751Z10	1				
13	TIE	CV-100	7920-0002	2				
14	BRACKET - PUMP		4Y7503M01	1				
15	TRUSS HEAD TAPPING SCREW T2		FT20516S0	2				
	TRUSS HEAD MACHINE SCREW	IM-100CNE-21	FST0516S0	2				
16	TUBING - PUMP DISCHARGE		4E0020R01	1				
17	SUCTION TUBE		4E0019G01	1				
18	PIPE - DRAIN		315530-01	1				
19	O-RING		7611-G025	1				
20	TRUSS HEAD MACHINE SCREW	IM-100CNE-21	FST0420S0	8				
21	TRUSS HEAD SCREW	IM-100CNE-21	FST0408S0	3				
22	TRUSS HEAD SCREW		FST0412S0	1				

IM-100CNE (-23, -21)

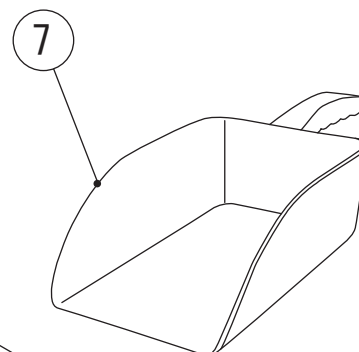
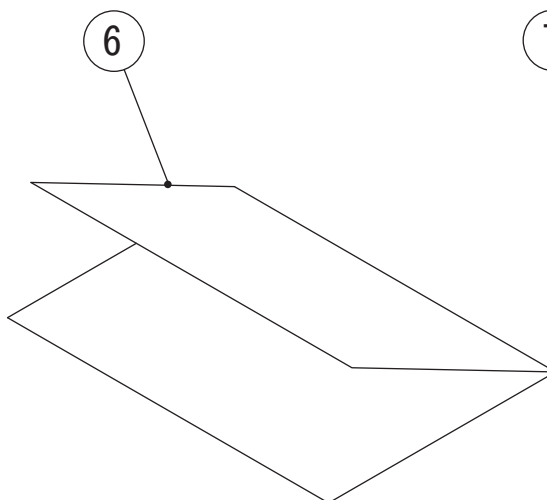
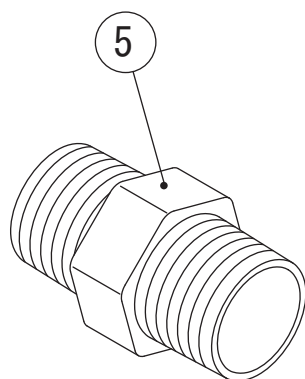
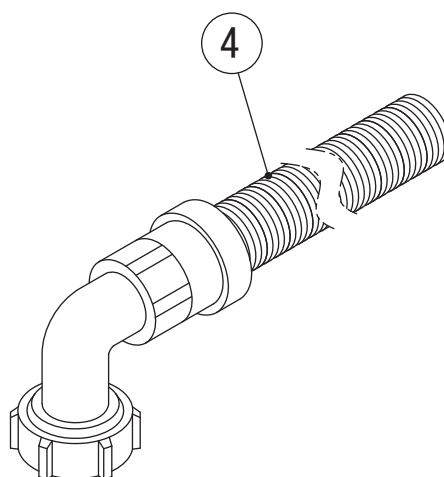
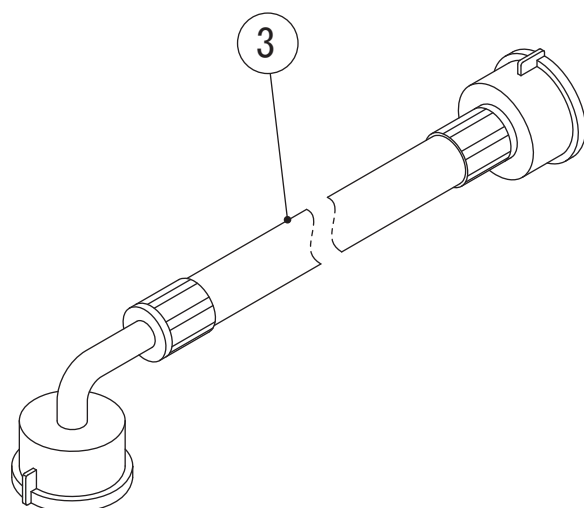
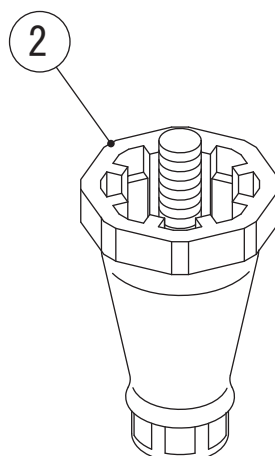
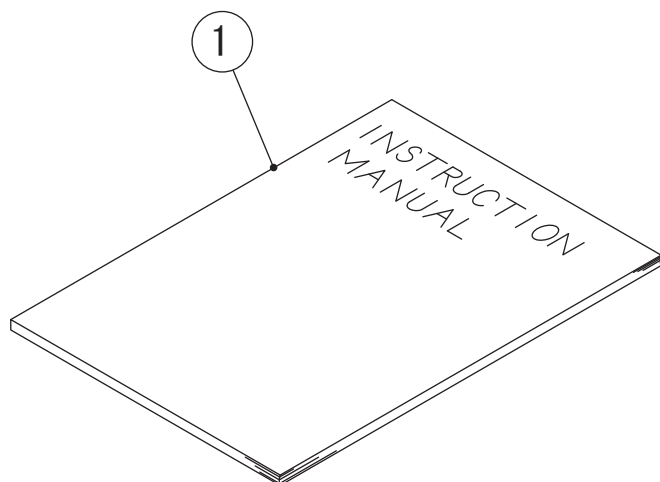
M. BIN CONTROL SWITCH

(B-1) and later



MODEL: IM-100CNE(-23,-21)				TITLE:M.BIN CONTROL SWITCH				
INDEX NO.	DESCRIPTION	MATERIAL OR MODEL NUMBER	PART NUMBER	REQ'D NUMBER				
				B-1 G-0	G-1 G-2	G-3 J-0	J-1	J-2
1	SWICH BOX		2H2043-01	1	1	1	1	1
2	SWITCH BOX COVER		4H8785-01	1	1	1	1	1
3	SWITCH ACTUATOR		3H1369-02	1	1	1	1	1
4	DETECTOR		311044-01	1	1	1	1	1
5	MICRO SWITCH		456432-02	1	1	1	1	1

MODEL: IM-100CNE(-23,-21)				TITLE: M.BIN CONTROL SWITCH				
INDEX NO.	DESCRIPTION	MATERIAL OR MODEL NUMBER	PART NUMBER	REQ'D NUMBER				
				J-3				
1	SWICH BOX		2H2043-01	1				
2	SWITCH BOX COVER		4H8785-01	1				
3	SWITCH ACTUATOR		3H1369-02	1				
4	DETECTOR		311044-01	1				
5	MICRO SWITCH		456432-02	1				



MODEL: IM-100CNE(-23,-21)				TITLE: N.ACCESSORIES				
INDEX NO.	DESCRIPTION	MATERIAL OR MODEL NUMBER	PART NUMBER	REQ'D NUMBER				
				B-1 G-0	G-1 G-2	G-3 J-0	J-1	J-2
1	INSTRUCTION MANUAL		L1E1EC203	1	1	1	1	1
		(CHINA)	L1E1EC301	1	1	1	1	1
		(KOREA)	L1E1EC401	1	1	1	1	1
		(HL)	L1E1EC113	1	1	1	1	1
2	LEG		446729-01	5	5	5	5	5
3	INLET HOSE	TC138-AF-HY	P03534-01	1	1	1	1	1
4	OUTLET HOSE		452365-01	1	1	1	1	1
5	NIPPLE		4H6125-01	1	1	1	1	1
6	INSTRUCTION MANUAL		121594L01	1	1	1	1	1
7	SCOOP		P00314-01	1	1	1	1	1

MODEL: IM-100CNE(-23,-21)				TITLE: N.ACCESSORIES				
INDEX NO.	DESCRIPTION	MATERIAL OR MODEL NUMBER	PART NUMBER	REQ'D NUMBER				
				J-3				
1	INSTRUCTION MANUAL		L1E1EC203	1				
		(CHINA)	L1E1EC301	1				
		(KOREA)	L1E1EC401	1				
		(HL)	L1E1EC113	1				
2	LEG		446729-01	5				
3	INLET HOSE	TC138-AF-HY	P03534-01	1				
4	OUTLET HOSE		452365-01	1				
5	NIPPLE		4H6125-01	1				
6	INSTRUCTION MANUAL		121594L01	1				
7	SCOOP		P00314-01	1				