

NO. E1EC-3584

ISSUED: JUL.2011

REVISED: DEC.2011

SERVICE INFORMATION

: HE-11022



## **HOSHIZAKI MODULAR CUBER**

**MODEL   IM-240NE  
          IM-240NE-23  
          IM-240WNE**

## **PARTS LIST**

**[ HE ]**

A-1   AUG. 2011

## AUXILIARY CODE

U - 1

The auxiliary code is the first two characters in the serial number. The first character indicates the production year. Years progress or regress in alphabetical order. The series of letters and skipped letters depend on UL listing, production, and model. See the auxiliary code(s) and corresponding year(s) on the front cover.

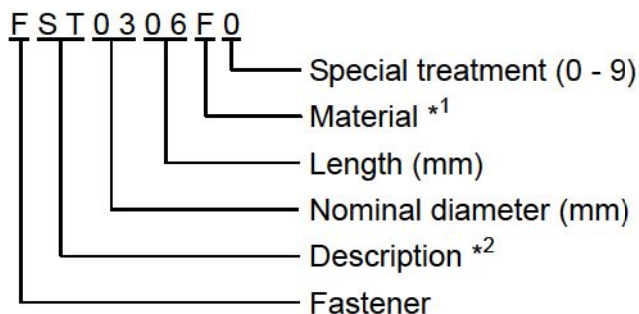
The second character indicates significant part changes within the same year. Base is "1" and this number advances for each change. If there is no significant part change at the turn of the year, this number starts from "0."

## MARKS LOCATED UNDER THE AUXILIARY CODE

- = Part deleted.
- x = Part deleted and replaced by "o" part.
- o = New part in place of "x" part.

## FASTENER PART NUMBER

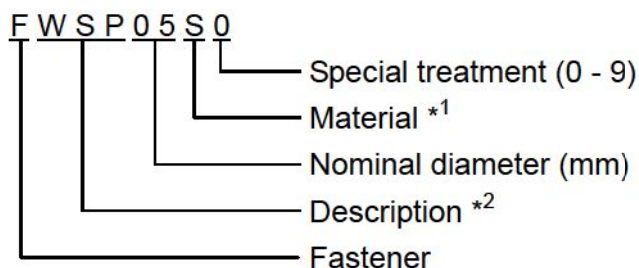
### SCREWS



\*<sup>1</sup> Material

F: Steel  
S: Austenitic stainless steel  
M: Martensitic stainless steel  
B: Copper alloy  
P: Polycarbonate  
N: Polyamide  
V: PVC  
A: ABS  
X: Polyacetal  
L: Aluminum

### NUTS & WASHERS

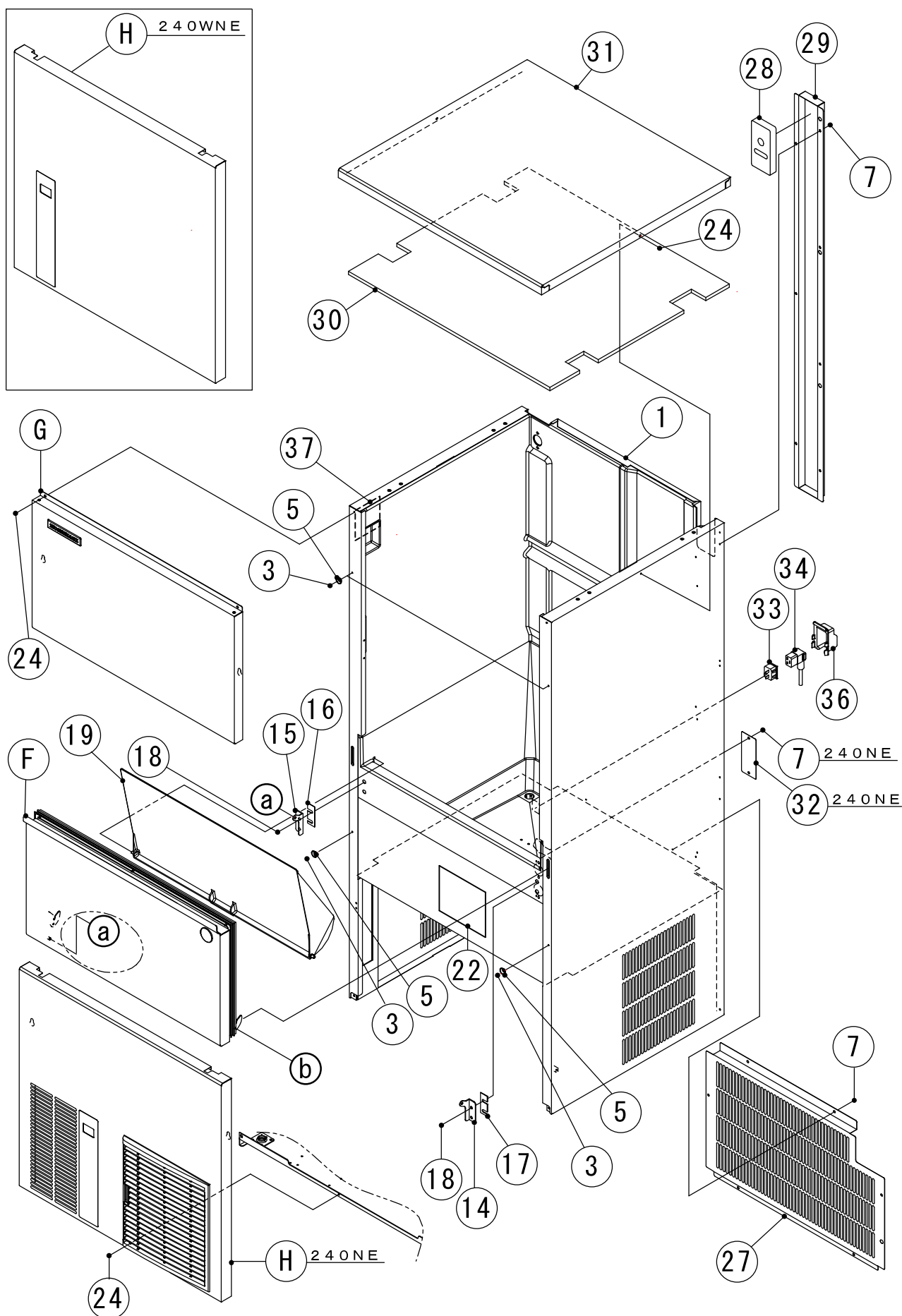


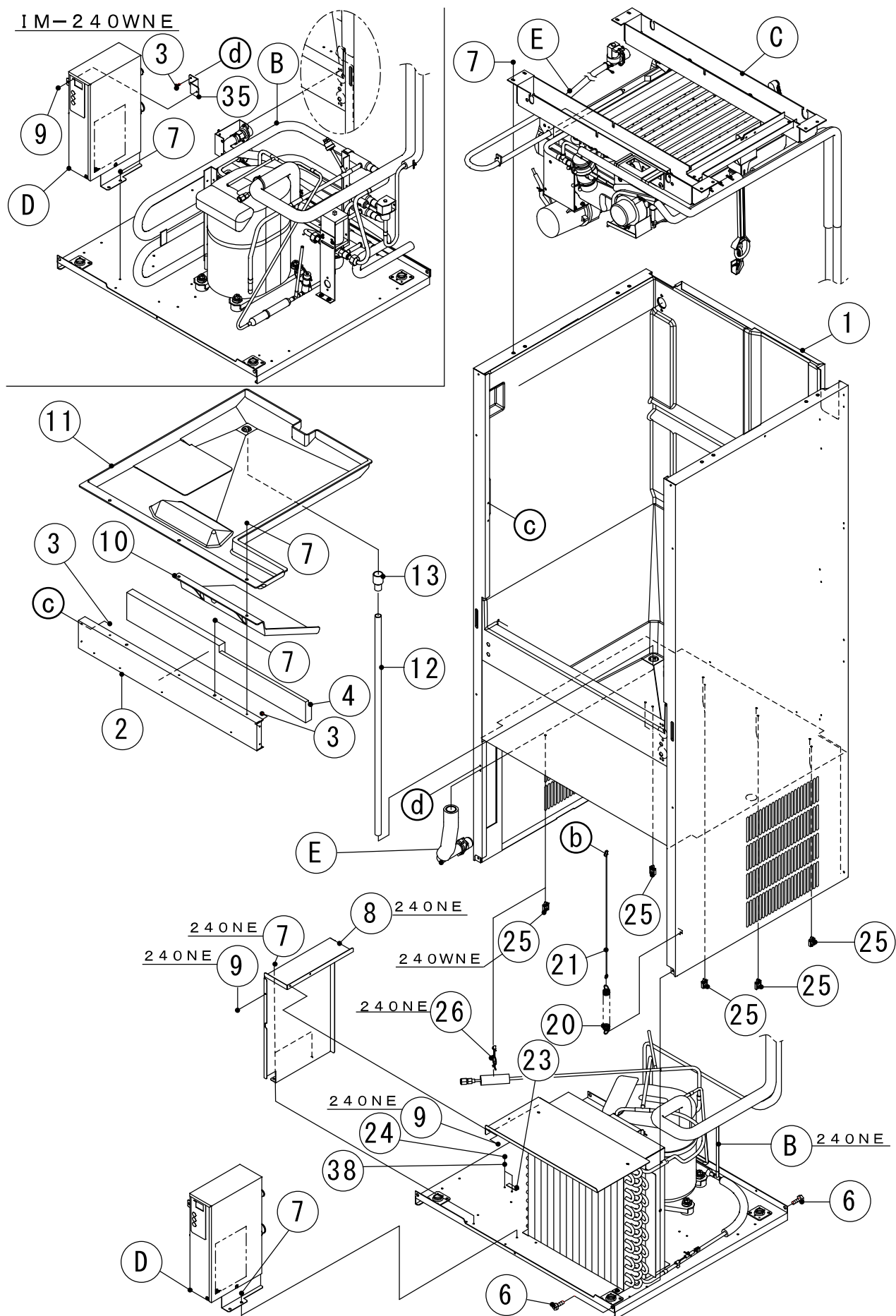
\*<sup>2</sup> Description

First letter  
S: Machine screw  
T: Tapping screw  
M: Wood screw  
B: Bolt  
W: Washer  
N: Nut

IM-240NE  
IM-240WNE

# A. ICE CUBBER ASSY (1/2) (A-1) and later



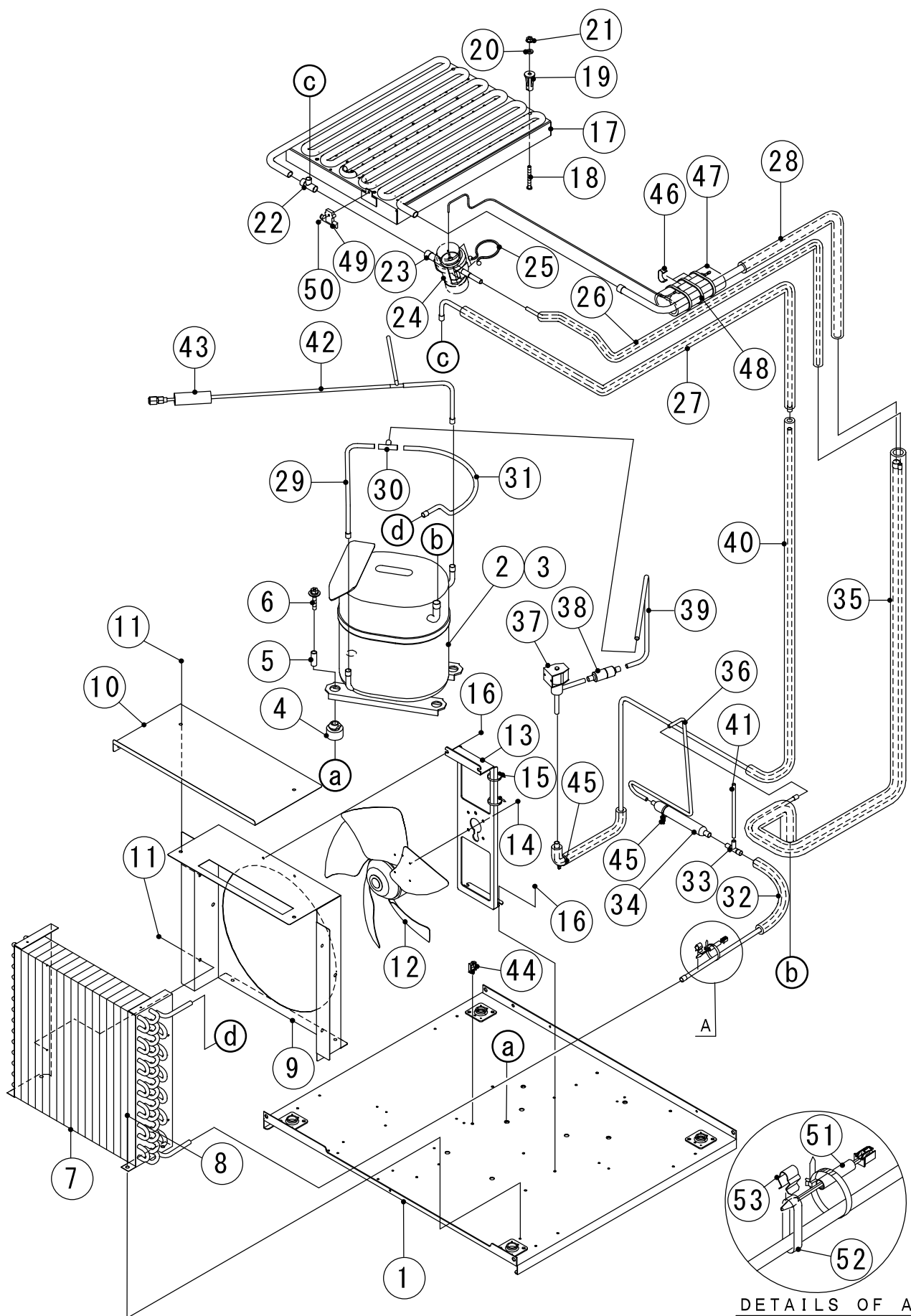


HE

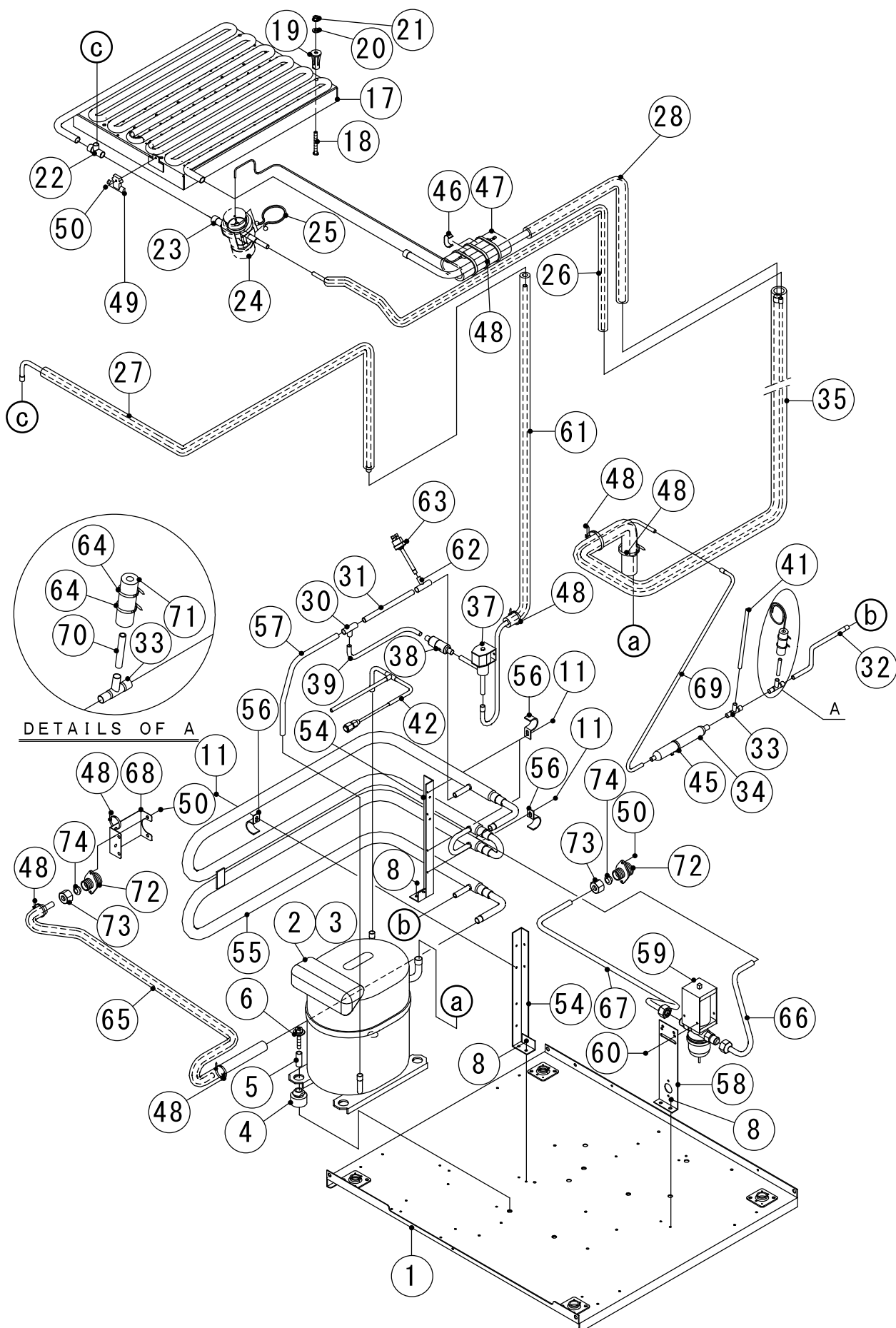
MODEL: IM-240NE,-23 IM-240WNE			TITLE: A.ICE CUBBER ASSY (1/2)				
INDEX NO.	DESCRIPTION	MATERIAL OR MODEL NUMBER	PART NUMBER	REQ'D NUMBER			
				A-1			
B	REFRIGERATION ASSY	(IM-240NE)	1H4761A01	1			
		(IM-240WNE)	1H4791A01	1			
C	MECHANISM ASSY		1H4762A01	1			
D	CONTROL BOX ASSY	(IM-240NE)	2X0291A01	1			
		(IM-240WNE)	2X0366A01	1			
E	WATER CIRCUIT ASSY		2X0293A01	1			
F	DOOR ASSY		3Y5436A01	1			
G	FRONT COVER UPPER ASSY		3Y5438A01	1			
H	FRONTCOVER(LOWER) ASSY	(IM-240NE)	3Y5439A01	1			
		(IM-240WNE)	3Y5544A01	1			
M	ACCESSORIES						
1	BODY		1H4759G01	1			
2	FRONT FRAME		3X9103-01	1			
3	RIVET	(IM-240NE)	7170-0002	8			
		(IM-240WNE)		10			
4	INSULATION - FRONT FRAME		4Y6991P01	1			
5	TAPER COLLAR		4H0171-01	4			
6	T2 SCREW	(IM-240NE)	1H4766-01	4			
		(IM-240WNE)	1H4794-01	4			
7	FLANGE BOLT (S-TITE)	(IM-240NE)	FTR0408M0	32			
		(IM-240WNE)		29			
8	COVER - CONT	(IM-240NE)	2X0292M01	1			
9	TRUSS HEAD TAPPING SCREW T2	(IM-240NE)	FT20408F0	3			
		(IM-240WNE)	FT20408F0	1			
10	ICE GUIDE G		4Y7002G01	1			
11	DRAIN PAN		3Y5434G01	1			
12	DRAIN PIPE		4X7117-02	1			
13	DRAIN TUBE		4H2585-01	1			
14	HINGE (RIGHT)		4H2583-01	1			
15	HINGE (LEFT)		4H2584-01	1			
16	HINGE SPACER (A)		4H0605-01	1			
17	HINGE SPACER (B)		4H0605-02	1			
18	HEX HEAD BOLT (SPRING WASHER AND FLAT WASHER)		FBK0616S0	4			
19	SLOPE		3X4854G01	1			

HE

[illegible]



DETAILS OF A





HE

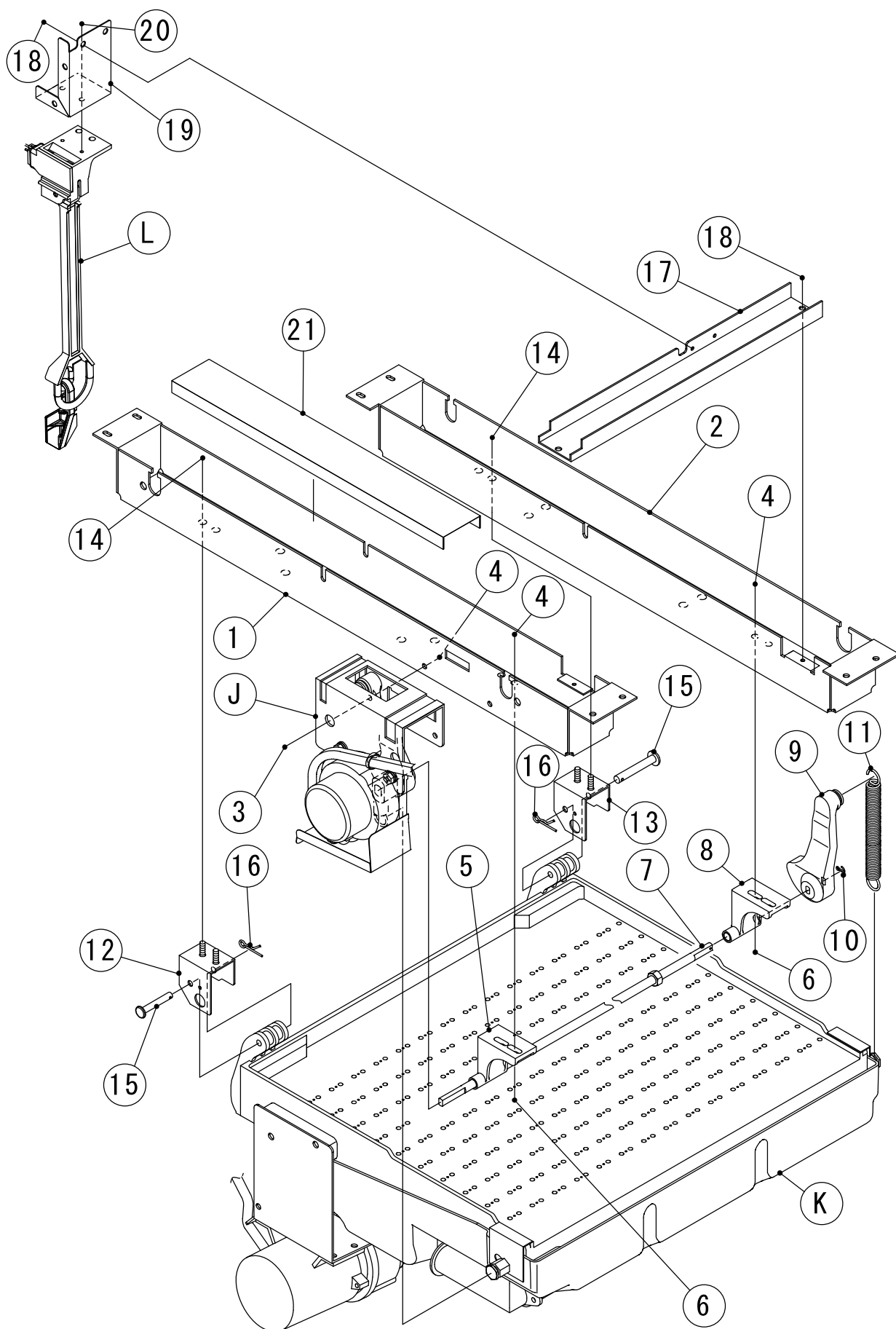
MODEL: <b>IM-240NE,-23</b> <b>IM-240WNE</b>				TITLE: <b>B.REFRIGERATION ASSY</b> <b>(1/3)</b>			
INDEX NO.	DESCRIPTION	MATERIAL OR MODEL NUMBER	PART NUMBER	REQ'D NUMBER			
				A-1			
1	BASE	(IM-240NE)	3Y5423G01	1			
		(IM-240WNE)	3Y5539G01	1			
2	COMPRESSOR		4A1581-01	1			
3	MOTOR PROTECTOR		4A1581F01	1			
4	GROMMET		434922-02	4			
5	SPACER		434921-01	4			
6	BOLT		436206-04	4			
7	CONDENSER - AIR COOLED	(IM-240NE)	P01875-01	1			
8	FLANGE BOLT (S-TITE)	(IM-240NE)	FTR0408M0	2			
		(IM-240WNE)		6			
9	SHROUD	(IM-240NE)	2H9947M01	1			
10	PLATE - COND	(IM-240NE)	4Y6996M01	1			
11	TRUSS HEAD TAPPING SCREW T2	(IM-240NE)	FT20408F0	6			
		(IM-240WNE)		4			
12	FAN MOTOR	(IM-240NE)	P02545-01	1			
13	BRACKET - FM	(IM-240NE)	3Y5075M01	1			
14	HEX HEAD BOLT (SPRING WASHER AND FLAT WASHER)	(IM-240NE)	FBK0408F0	5			
15	NYLON TIE	(IM-240NE)	7920-0002	2			
16	HEX HEAD BOLT (SPRING WASHER AND FLAT WASHER)	(IM-240NE)	FBK0510F0	4			
17	EVAPORATOR		2H7526G02	1			
		(IM-240NE-23)	2H1833G03	1			
18	SCREW EVAPORATOR		4Y4922M02	4			
		(IM-240NE-23)	4Y4922M03	4			
19	COLLAR		3H3879-01	4			
20	WASHER		4H0777-01	4			
21	FLANGE NUT		FNHF06S0	4			
22	TEE		430608-01	1			
23	EXPANSION VALVE		P01874-01	1			
24	VALVE COVER		3Y3051P01	1			
25	CLAMP		P00752-01	2			
26	COPPER TUBE(D) - HIGH SIDE		3Y5424G01	1			
27	COPPER TUBE(C) - HOT GAS		3Y5425G01	1			
28	COPPER TUBE(A) - LOW SIDE		3Y5426G01	1			
29	COPPER TUBE(A) - HIGH SIDE	(IM-240NE)	4Y6992M01	1			

HE

MODEL: <b>IM-240NE,-23</b> <b>IM-240WNE</b>				TITLE: <b>B.REFRIGERATION ASSY</b> <b>(2/3)</b>			
INDEX NO.	DESCRIPTION	MATERIAL OR MODEL NUMBER	PART NUMBER	REQ'D NUMBER			
				A-1			
30	TEE	(IM-240NE)	420041-11	1			
		(IM-240WNE)	420041-09	1			
31	COPPER TUBE(A-2) - HIGH SIDE	(IM-240NE)	4Y6993M01	1			
		(IM-240WNE)	4Y7079M01	1			
32	COPPER TUBE(B) - HIGH SIDE	(IM-240NE)	4Y6994G01	1			
		(IM-240WNE)	4Y7080M01	1			
33	TEE	(IM-240NE)	4Y4060Z01	1			
		(IM-240WNE)		2			
34	DRIER		458776-01	1			
35	HEAT EXCHANGER	(IM-240NE)	2X0289G01	1			
		(IM-240WNE)	2X0364G01	1			
36	COPPER TUBE(B2) - HIGH SIDE	(IM-240NE)	4Y7057M01	1			
37	HOT GAS VALVE		P01871-01	1			
38	STRAINER		P00812-01	1			
39	COPPER TUBE(A) - HOT GAS	(IM-240NE)	3Y5427M01	1			
		(IM-240WNE)	4Y7082M01	1			
40	COPPER TUBE(B) - HOT GAS	(IM-240NE)	2X0290G01	1			
41	PROCESS TUBE		4Y0273-01	1			
42	COPPER TUBE(G) - PROCESS	(IM-240NE)	3Y5508G01	1			
		(IM-240WNE)	3Y5534G01	1			
43	INSULATION TUBE	(IM-240NE)	H71323070	1			
44	WIRE SADDLE	(IM-240NE)	428060-03	1			
45	PUSH MOUNT TIE	(IM-240NE)	436156-01	2			
		(IM-240WNE)		1			
46	CLIP		452254-02	2			
47	INSULATION		4X8643-01	1			
48	TIE	(IM-240NE)	7920-0003	3			
		(IM-240WNE)		9			
49	HOLDER - THERMISTOR		3H9642-01	1			
50	TRUSS HEAD TAPPING SCREW (S-TITE)	(IM-240NE)	FTS0408M0	1			
		(IM-240WNE)		5			
51	THERMISTOR(G) - FILTER	(IM-240NE)	4Y4859G01	1			
52	ALUMINUM TAPE	(IM-240NE)	1H4761-01	1			
53	CLIP - THERMISTOR	(IM-240NE)	4R2938-01	1			
54	BRACKET CONDENSER	(IM-240WNE)	425490-01	2			
55	CONDENSER - WATER COOLED	(IM-240WNE)	103099G01	1			

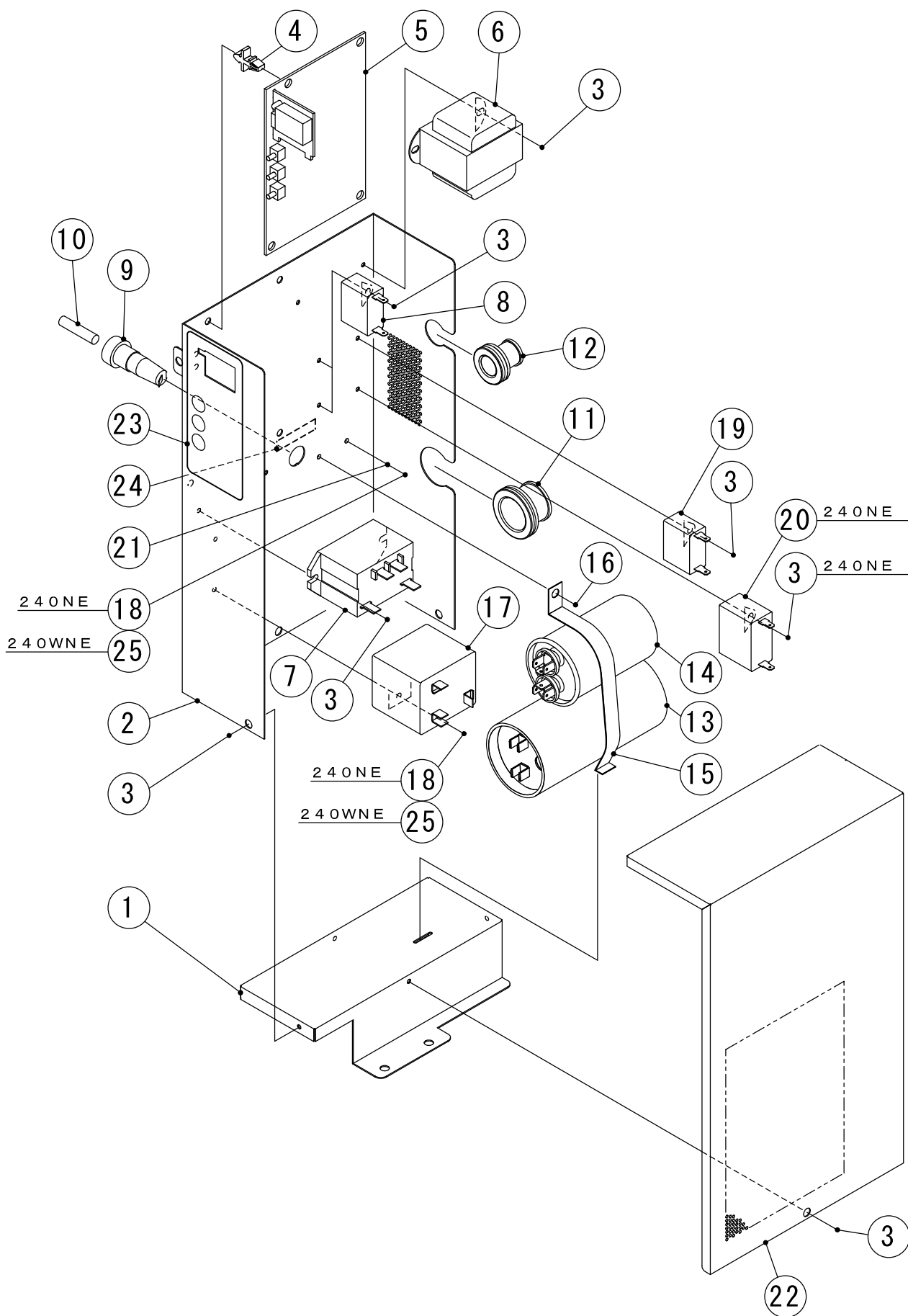
HE

[illegible]



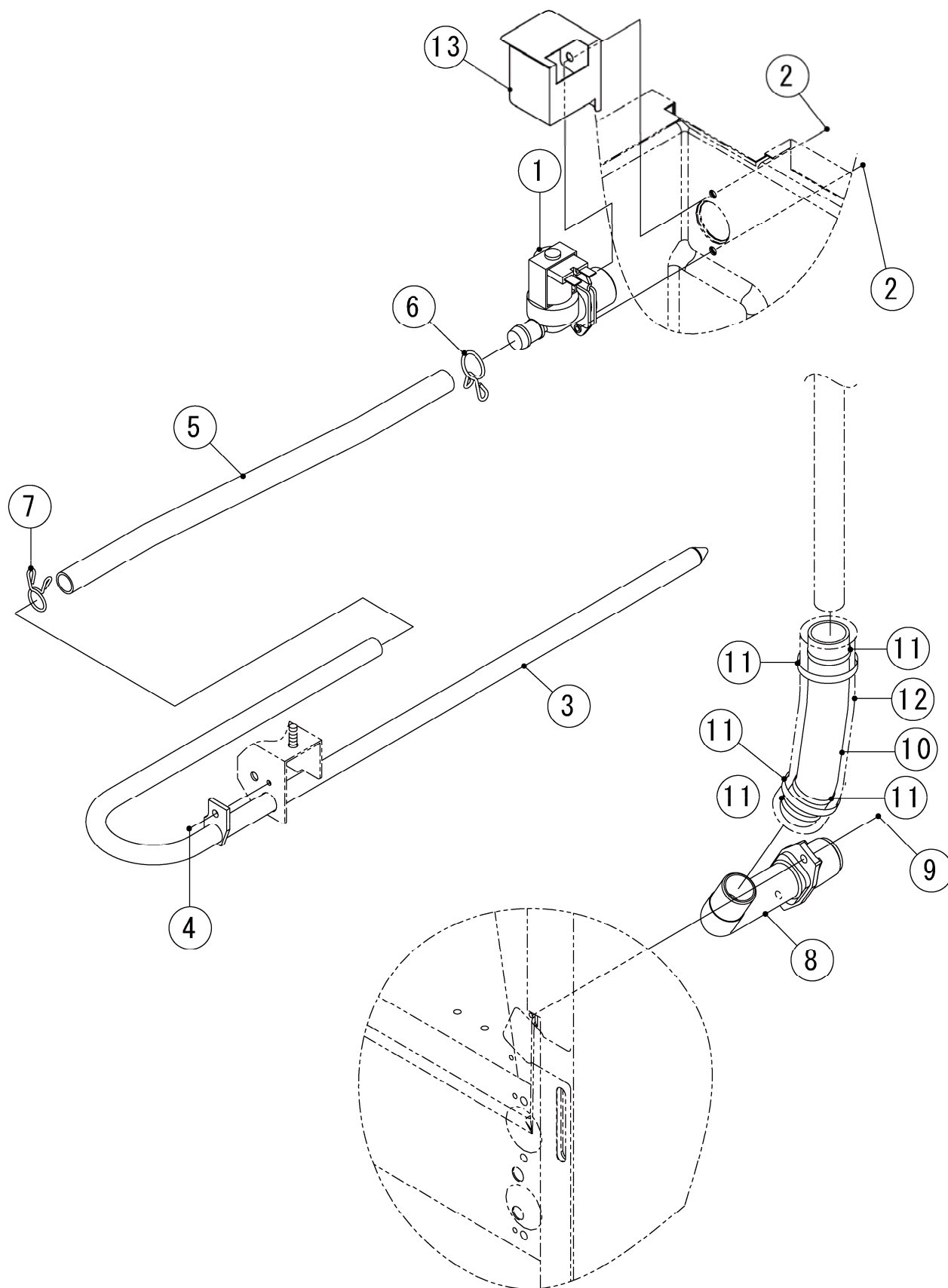
HE

[illegible]



HE

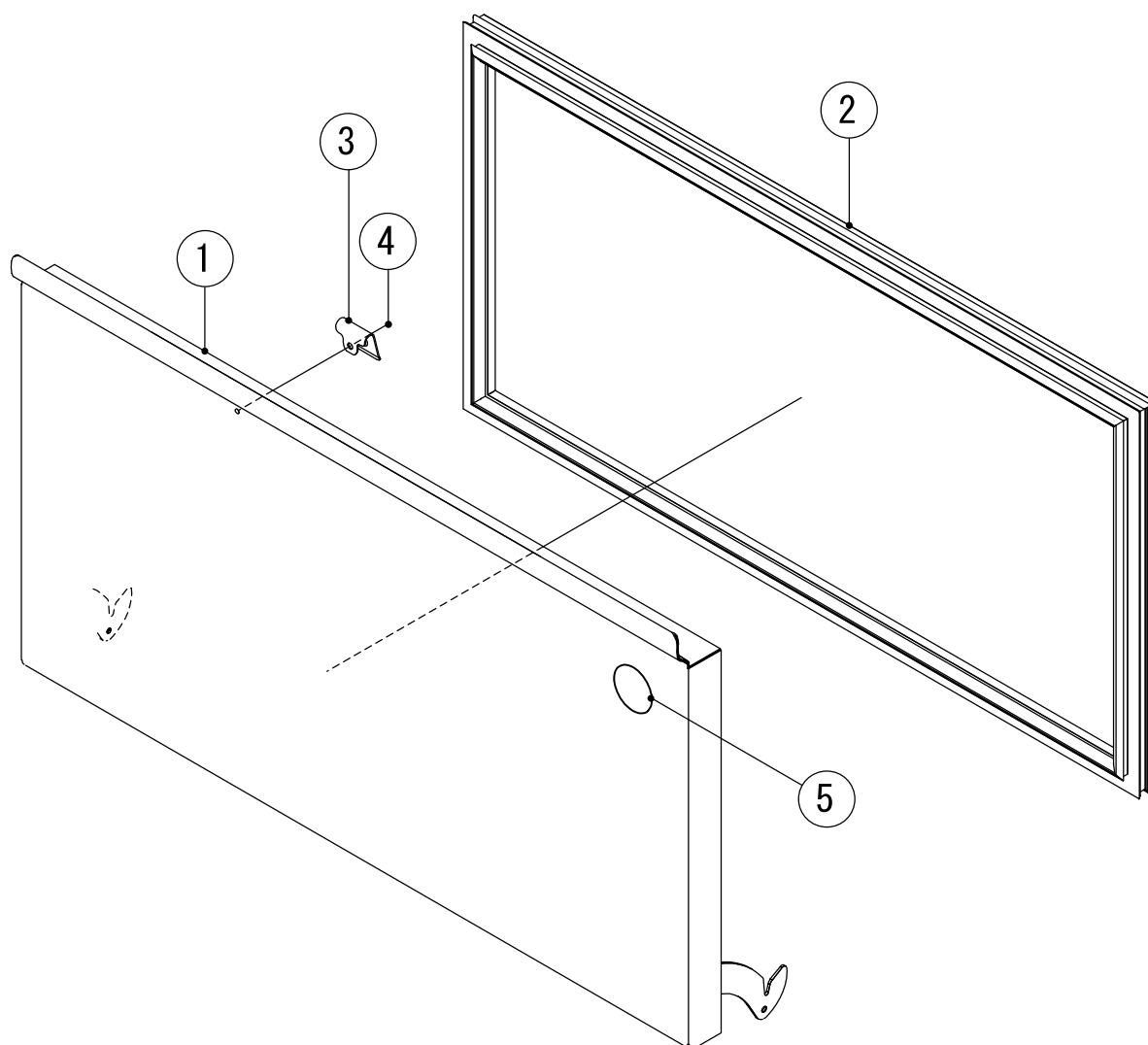
[illegible]





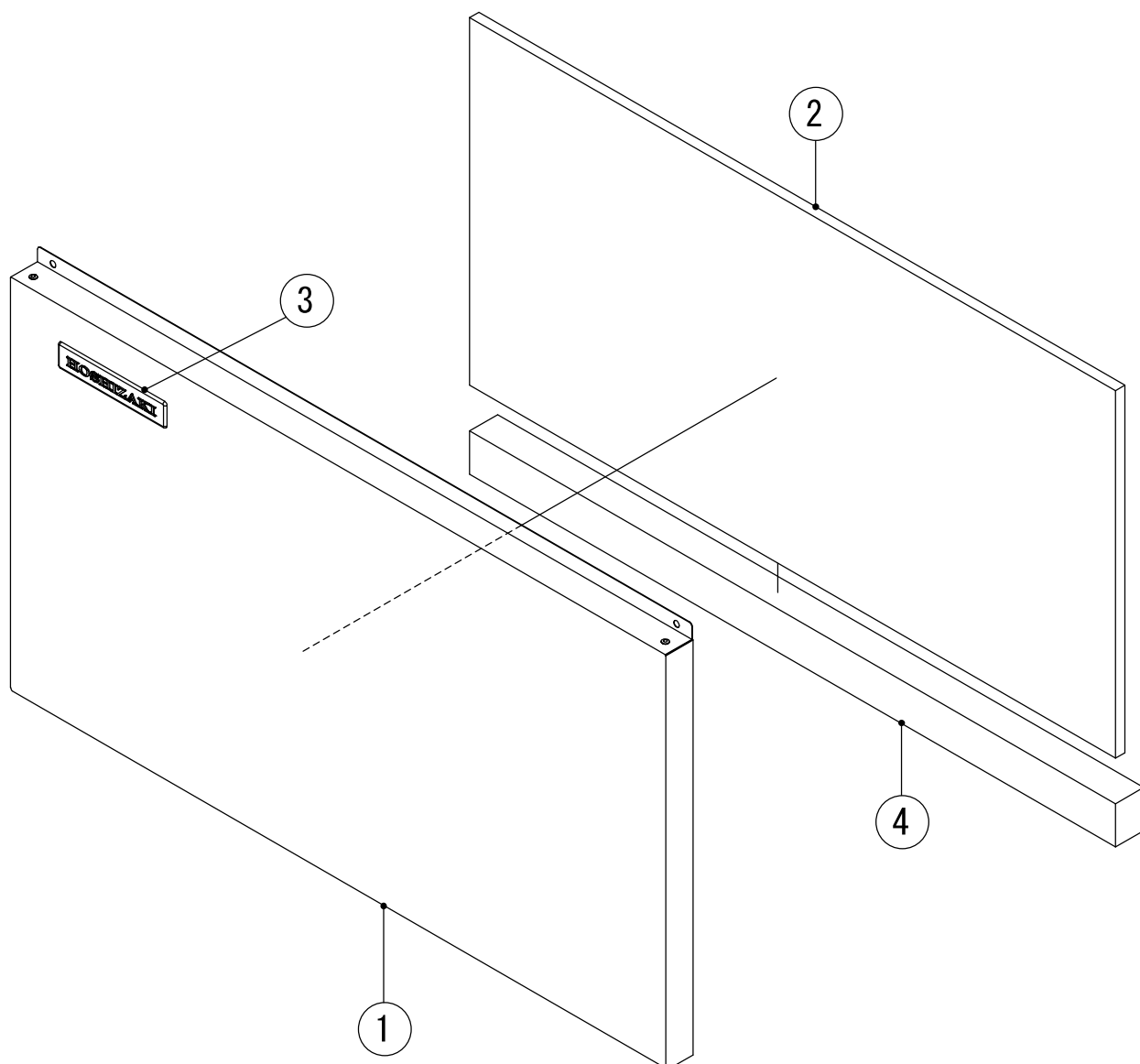
HE

[illegible]

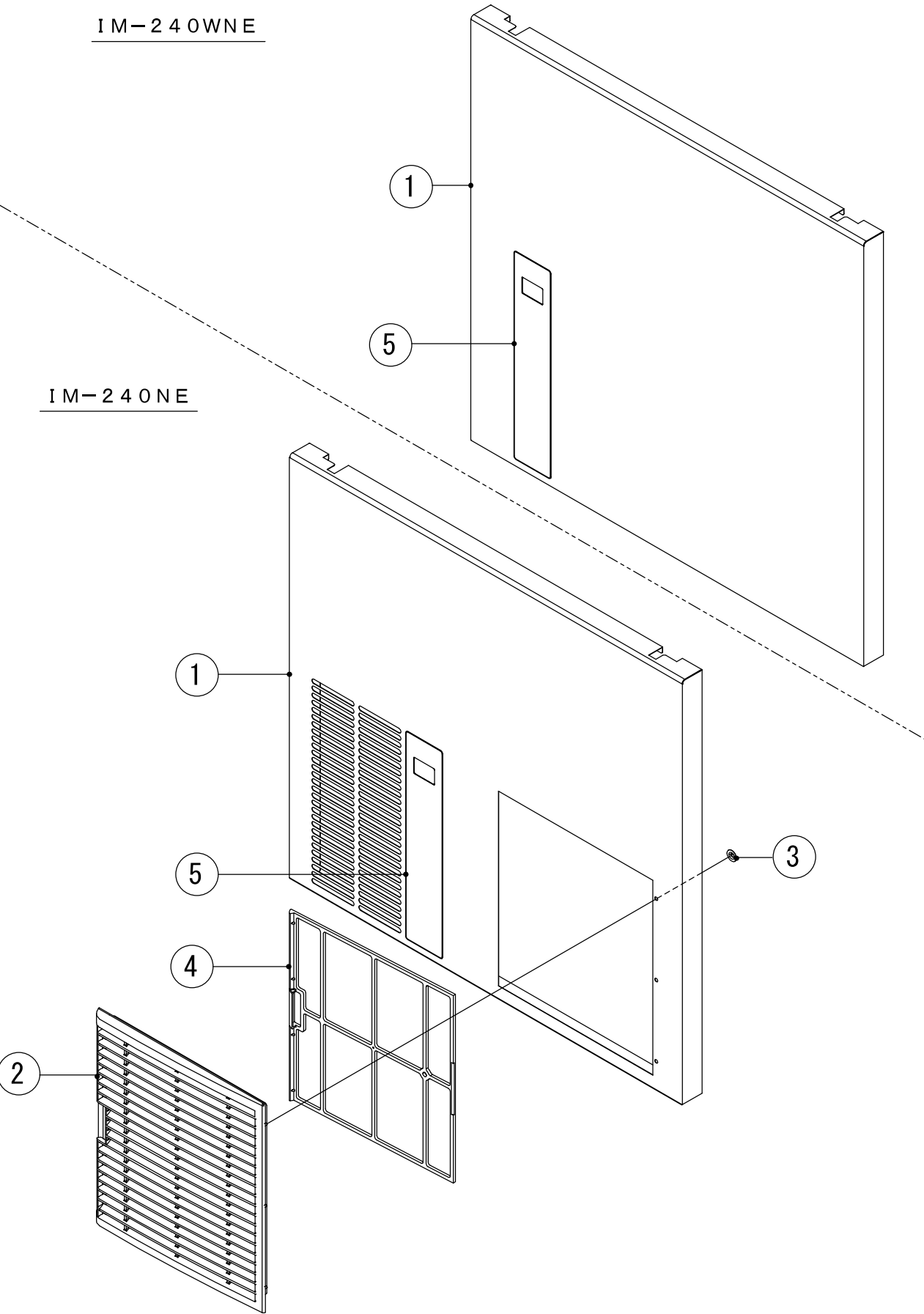


HE

[illegible]





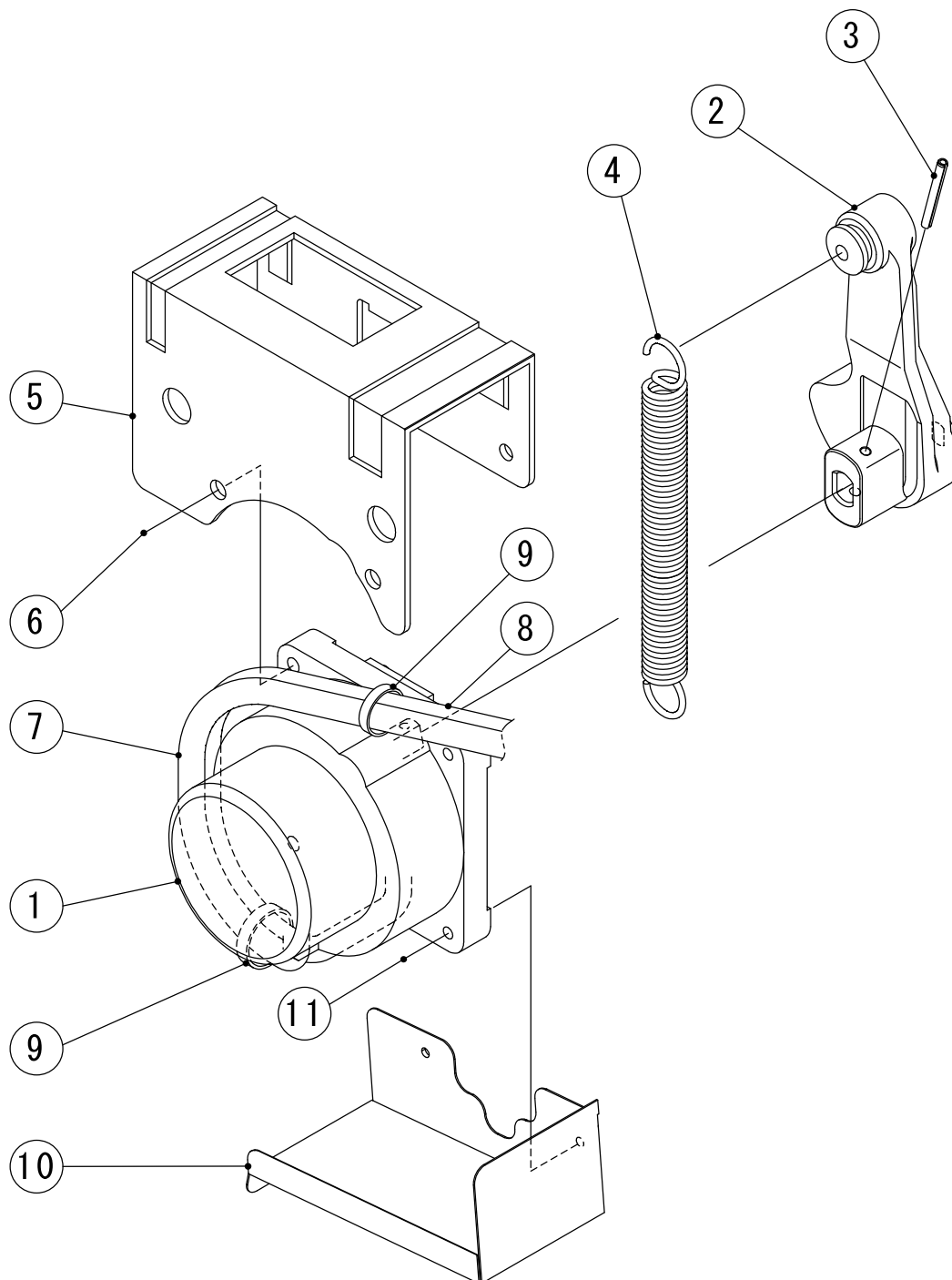


HE

[illegible]

IM-240NE  
IM-240WNE

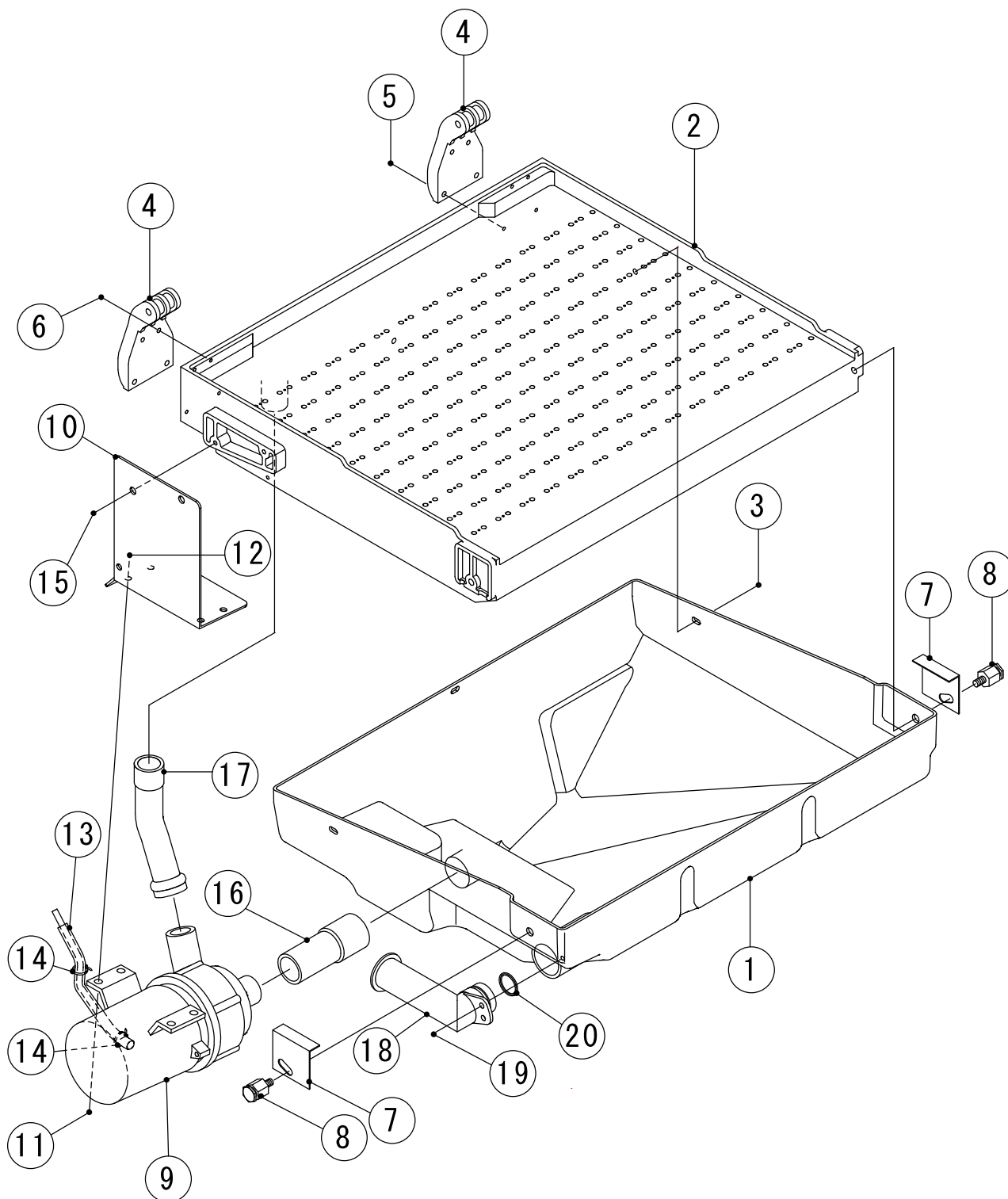
J. ACTUATOR MOTOR ASSY (A-1) and later





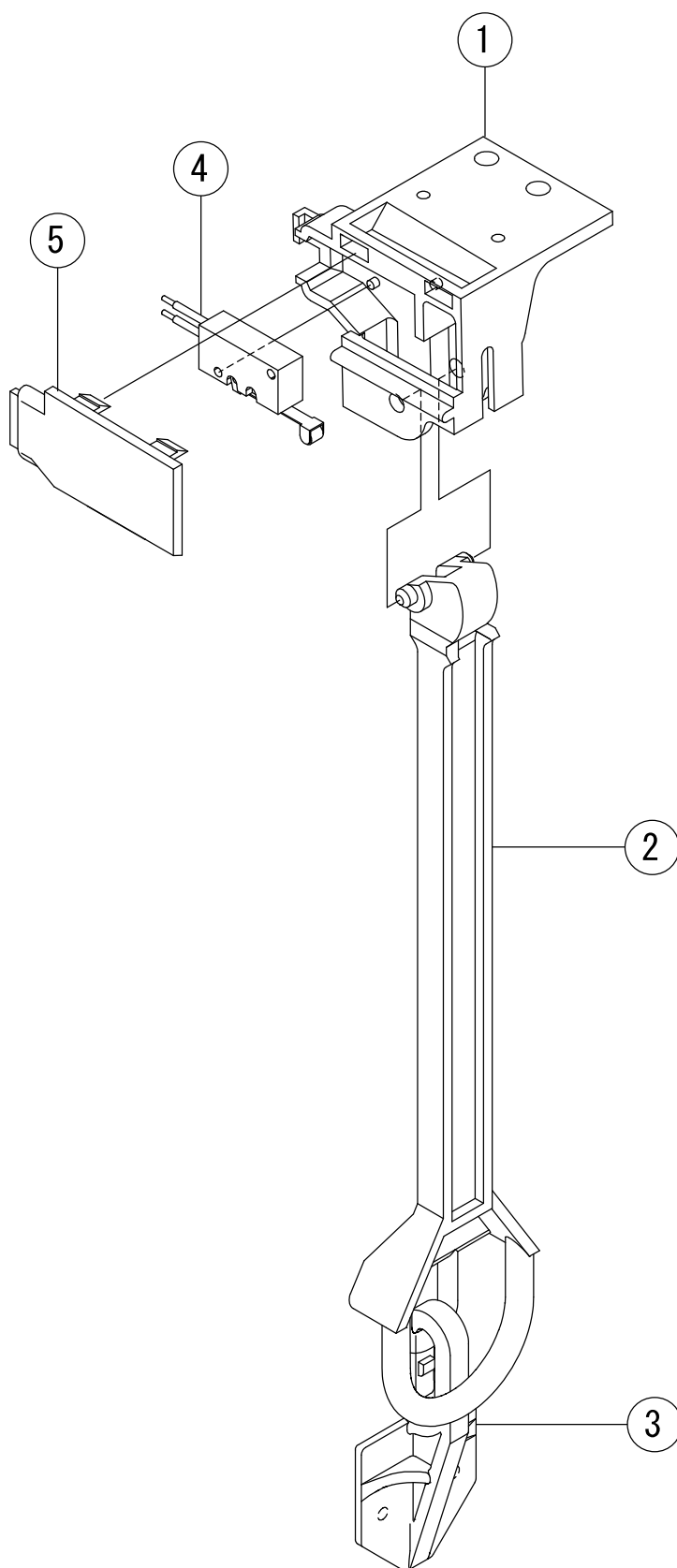
HE

[illegible]



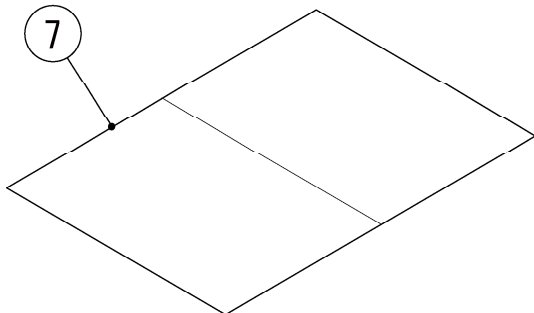
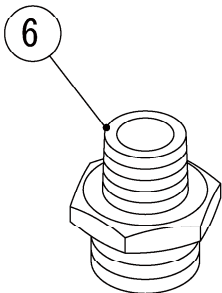
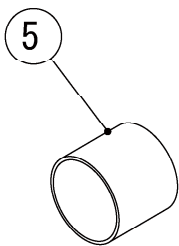
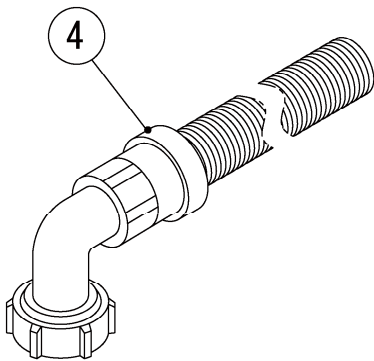
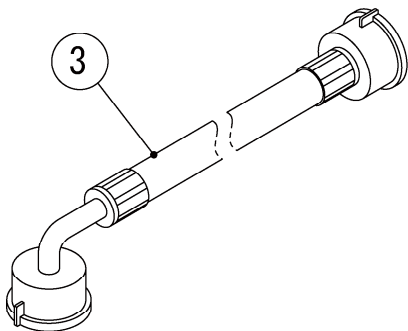
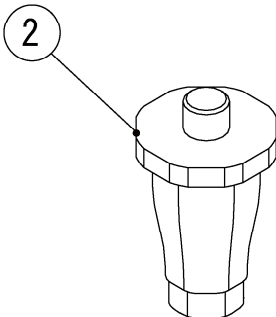
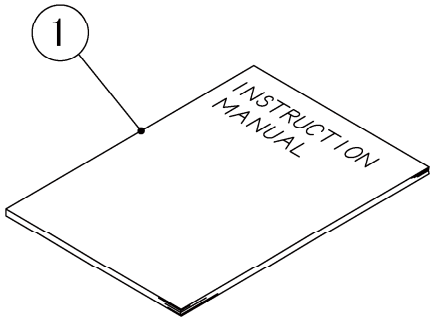
HE

[illegible]



HE

[illegible]



HE

[illegible]