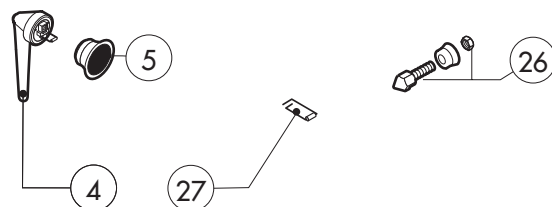
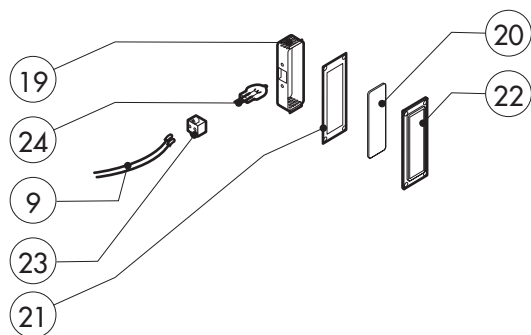
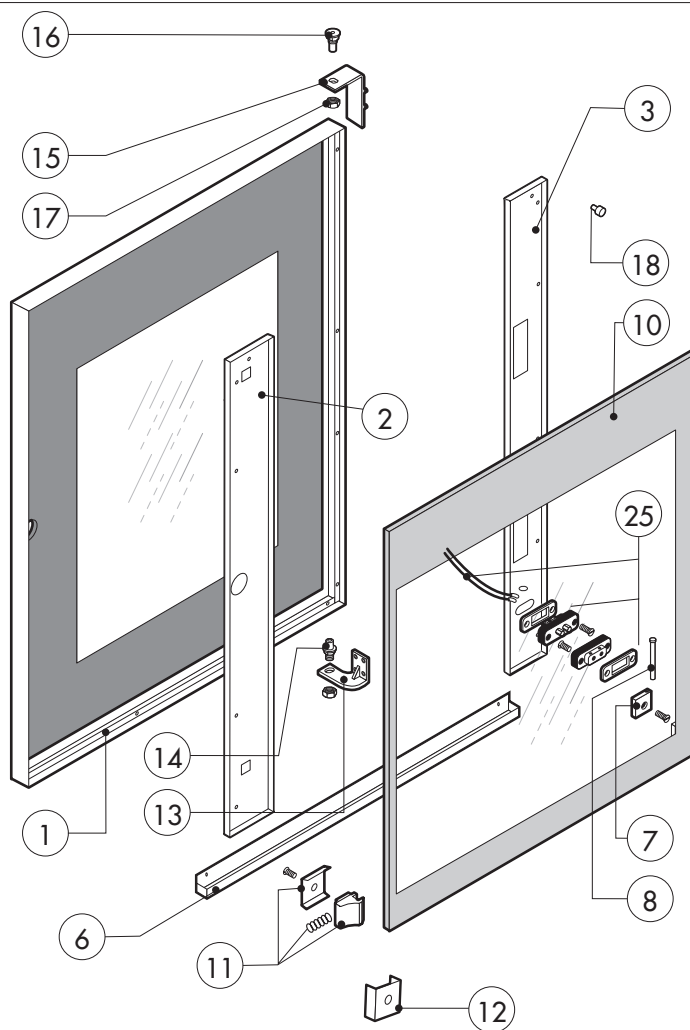
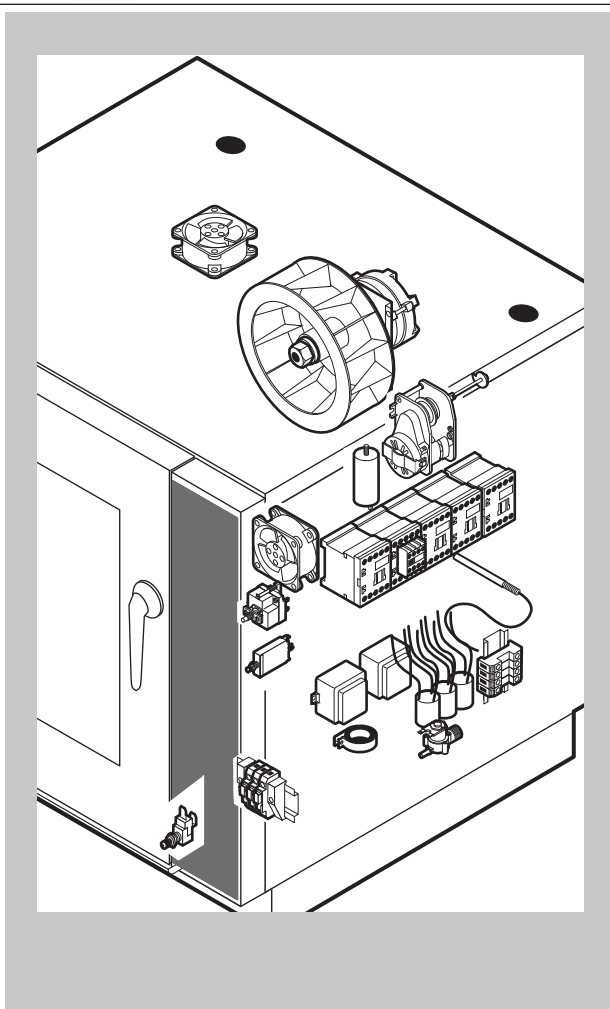


[illegible]



| POS. | CODE | PIECES | DESCRIPTION |
|------|-----------|--------|--------------------------|
| 1 | R18203260 | 1 | DOOR |
| 2 | R18420761 | 1 | RIGHT DOOR POST |
| 3 | R18420771 | 1 | LEFT DOOR POST |
| 4 | R69010210 | 1 | DOORHANDLE |
| 5 | R69010630 | 1 | DOORHANDLE COVER |
| 6 | R18420811 | 1 | DOOR BASIN |
| 7 | R58001760 | 2 | INNER GLASS SOLID HINGE |
| 8 | R58001770 | 2 | INNER GLASS HINGE PIN |
| 9 | R66110320 | 1 | DOOR LAMPS CABLE SET |
| 10 | R71201550 | 1 | OUTER DOOR GLASS |
| 11 | R58001780 | 2 | INNER GLASS CATCH KIT |
| 12 | R11401350 | 2 | OUTER DOOR GLASS FLANGE |
| 13 | R18404500 | 1 | LOWER DOOR HINGE |
| 14 | R58002520 | 1 | LOWER HINGE PIN |
| 15 | R11401410 | 1 | UPPER DOOR HINGE |
| 16 | R58002150 | 1 | UPPER HINGE PIN |
| 17 | R58004050 | 2 | NUT FOR UPPER DOOR HINGE |
| 18 | R70050100 | 6 | GLASS SILICON SPACERS |
| 19 | R11401440 | 1 | LAMP COVER |

[illegible]

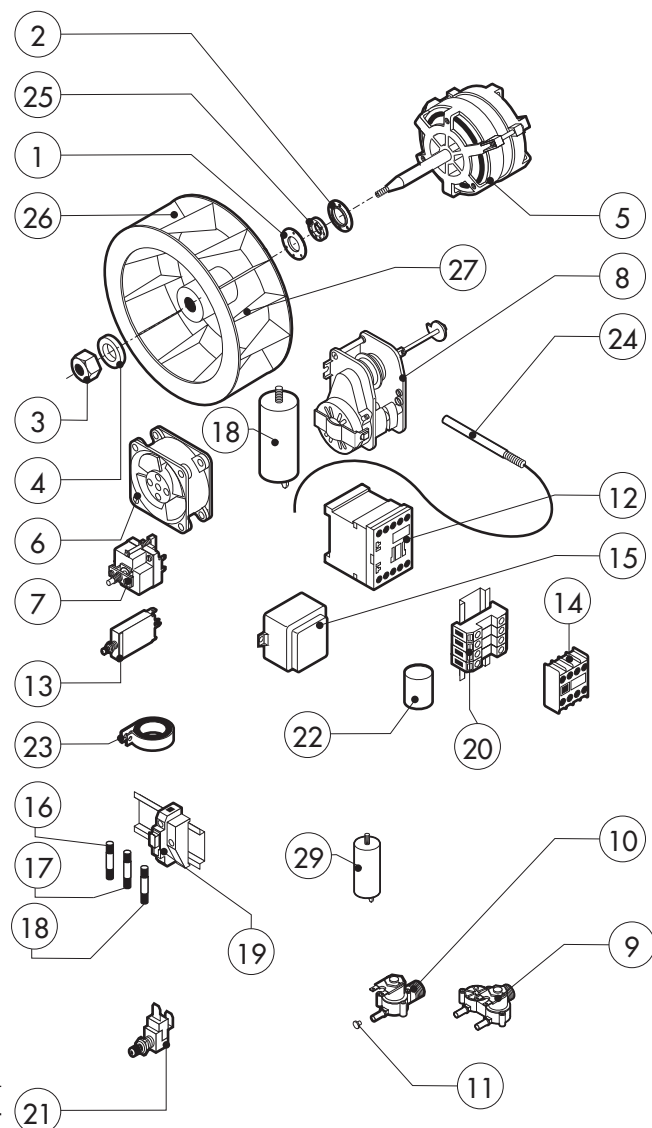


TWO SPEED FAN

| POS. | CODE | PIECES | DESCRIPTION |
|------|------------|--------|------------------------------------|
| 5 | *R65040431 | 1 | MOTOR KW 025/005 2-4P 220-240V KIT |
| 12 | *R65140700 | 7 | CONTACTOR DIL M9-01 4KW-20A |
| 28 | *R65160300 | 1 | THERMIC PROTECTION T12-211S-0,8A |
| | | | |
| | | | |
| | | | |



| POS. | CODE | PIECES | DESCRIPTION |
|------|------------|--------|---------------------------------------|
| 1 | R58003860 | 1 | MOTOR GASKET BRASS FLANGE |
| 2 | R58003870 | 1 | MOTOR GASKET BRASS COUNTER FLANGE |
| 3 | R58004020 | 1 | FAN SECURITY NUT M10 SX |
| 4 | R61400052 | 1 | FAN WASHER Ø 21/10.5 |
| 5 | *R65040421 | 1 | MOTOR KW 025 2P 220-240V KIT |
| 6 | R65060050 | 2 | COMPONENTS VENTILATION MOTOR Ø 120 |
| 7 | R65070350 | 1 | CHAMBER SAFETY THERMOSTAT |
| 8 | R65095000 | 1 | DAMPER SYSTEM |
| 9 | R65110230 | 1 | SOLENOID VALVE 220V 50HZ |
| 10 | R65110200 | 1 | SOLENOID VALVE 220V 50HZ |
| 11 | R65110520 | 1 | 22 LT/H WATER FLOW REDUCER |
| 12 | *R65140700 | 5 | CONTACTOR DIL M9-01 4KW-20A |
| 13 | *R65160320 | 1 | THERMIC PROTECTION T12-211S-2A |
| 14 | *R65140730 | 1 | AUX.CONTACT 1L+1R DILM32-XH11 4-7,5KW |
| 15 | R65180420 | 2 | TRANSFORMER 20VA |
| 16 | R65200200 | 1 | FUSE 2A |
| 17 | R65200320 | 1 | FUSE 0.200A (T) |
| 18 | R65200086 | 1 | FUSE 0.125A (T) |
| 19 | R65210020 | 3 | FUSE CARRIER |

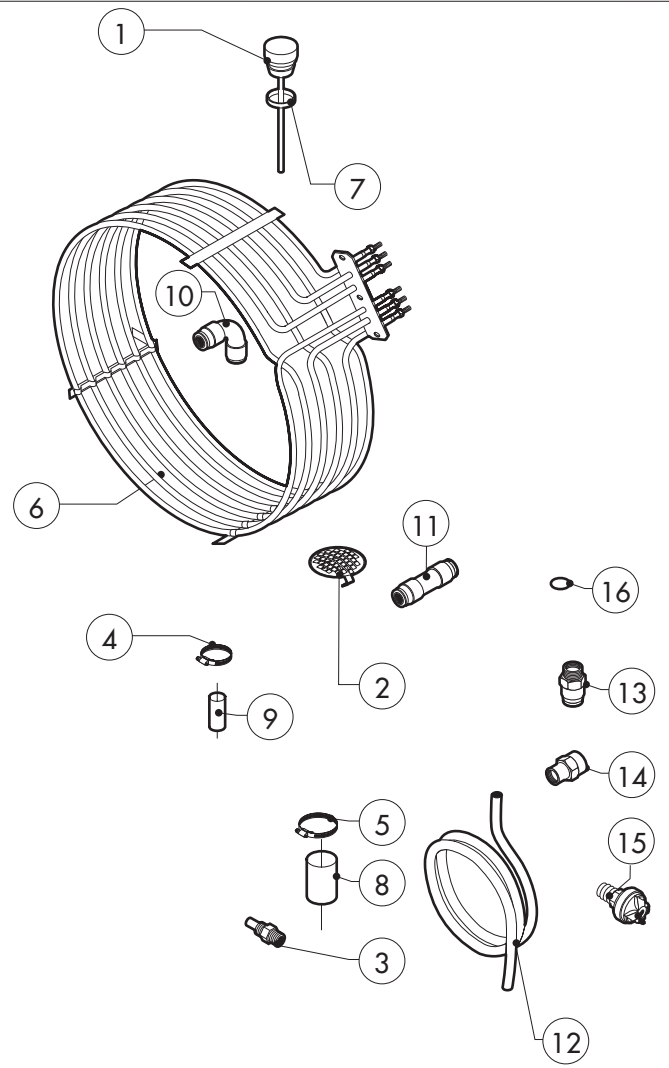
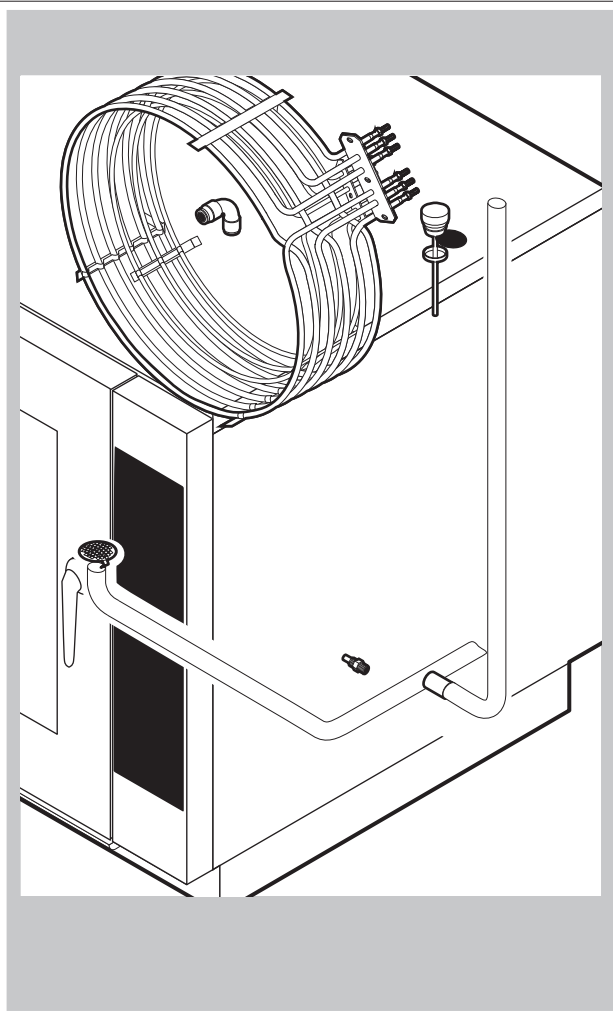


| POS. | CODE | PIECES | DESCRIPTION |
|------|------------|--------|------------------------------|
| 20 | R65220091 | 1 | TERMINAL BOARD |
| 21 | R65260540 | 1 | DOOR SWITCH |
| 22 | *R65280200 | 3 | INTERFERENCE SUPPRESSOR |
| 23 | *R65280490 | 1 | FERRITE FT35 |
| 24 | R65320220 | 2 | PROBE "K" 6X80 1,5ML. |
| 25 | R70020040 | 1 | MOTOR GASKET |
| 26 | *R75400490 | 1 | FAN Ø 220X80/8 P.D. 50HZ . |
| 27 | R75400530 | 1 | FAN Ø 220x80/8 60HZ P.D. KIT |
| 29 | R65190180 | 1 | CAPACITOR 10 µF |
| | | | |
| | | | |
| | | | |
| | | | |
| | | | |
| | | | |
| | | | |
| | | | |
| | | | |

*COMPONENT SUBMITTED TO CHANGEMENTS CAUSED BY TENSION
DIFFERENT FROM THE STANDARD (3N AC 400V 50HZ)

SVE 071 S

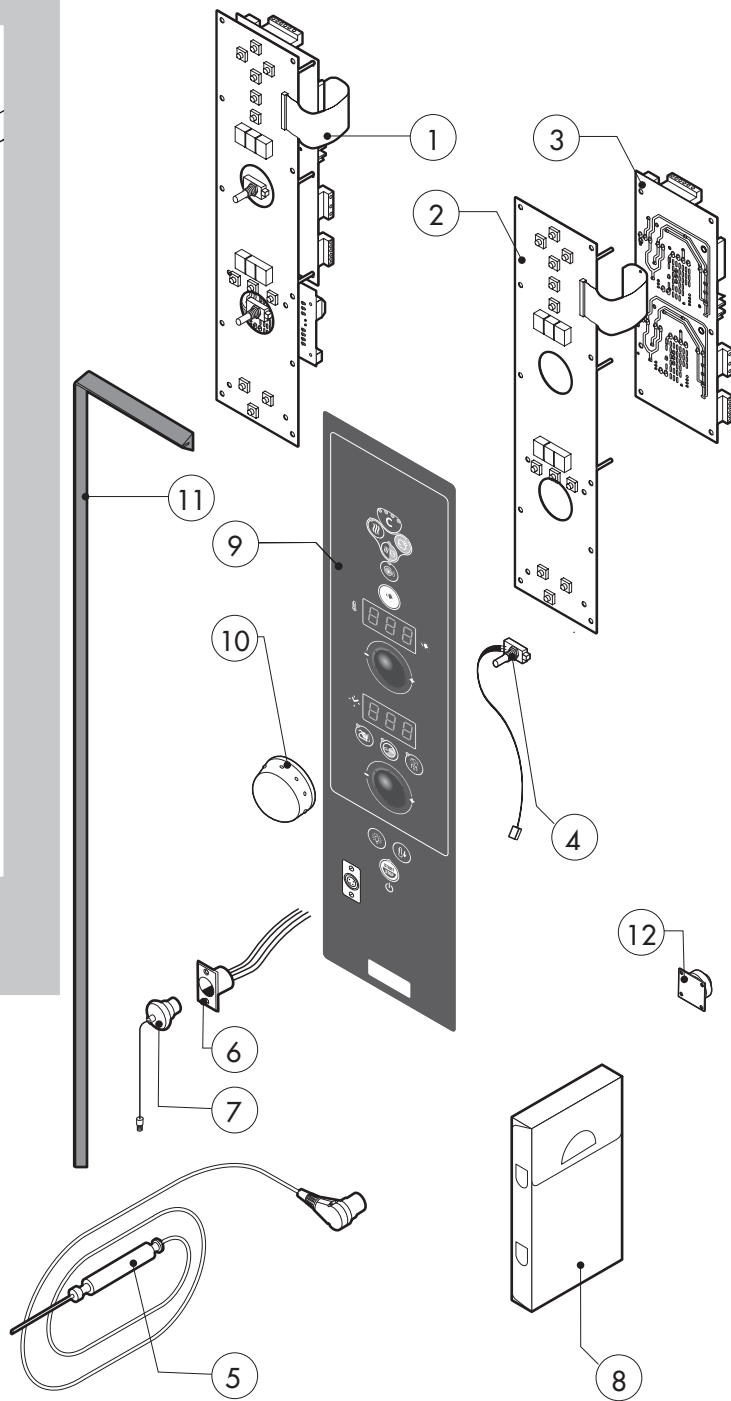
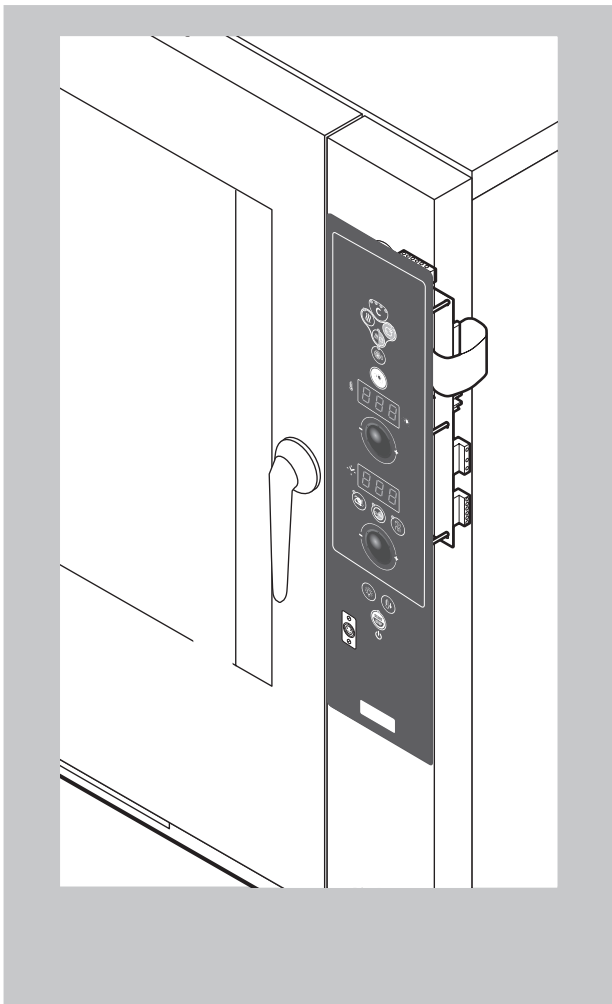
tav. C



| POS. | CODE | PIECES | DESCRIPTION |
|------|------------|--------|--|
| 1 | R10100140 | 1 | DAMPER SYSTEM CAP |
| 2 | R10201700 | 1 | DRAIN FILTER |
| 3 | R58006130 | 1 | STEAM QUENCHING NOZZLE Ø 1 |
| 4 | R61630011 | 2 | METAL CLAMPS 12-22/9 |
| 5 | R61630021 | 2 | METAL CLAMPS 30-45/9 |
| 6 | *R65011900 | 1 | CHAMBER HEATING ELEMENT 9000W |
| 7 | R70060020 | 1 | DAMPER SYSTEM CAP GASKET |
| 8 | R70060010 | 1 | SILICON COUPLING Ø 30 |
| 9 | R70060080 | 1 | SILICON COUPLING Ø 13 |
| 10 | R62090478 | 3 | ELBOW MIDDING PIPE FITTING D.10 |
| 11 | R62090458 | 1 | STRAIGHT MIDDING PIPE FITTING D.10 |
| 12 | R70070050 | 1 | PE D.10 MM X7 WATER FLEXIBLE PIPE (3 MT LONG) |
| 13 | R62090508 | 1 | 10X1/4 STRAIGHT THREADED TERMINAL PIPE FITTING |
| 14 | R62030118 | 1 | 1/8"-1/4" FEMALE REDUCTION COUPLING |
| 15 | R63070050 | 1 | WATER SAFETY PRESSURE SWITCH 1/8" 0,5-0,35 BAR |
| 16 | R70010050 | 1 | GASKET |
| | | | |
| | | | |

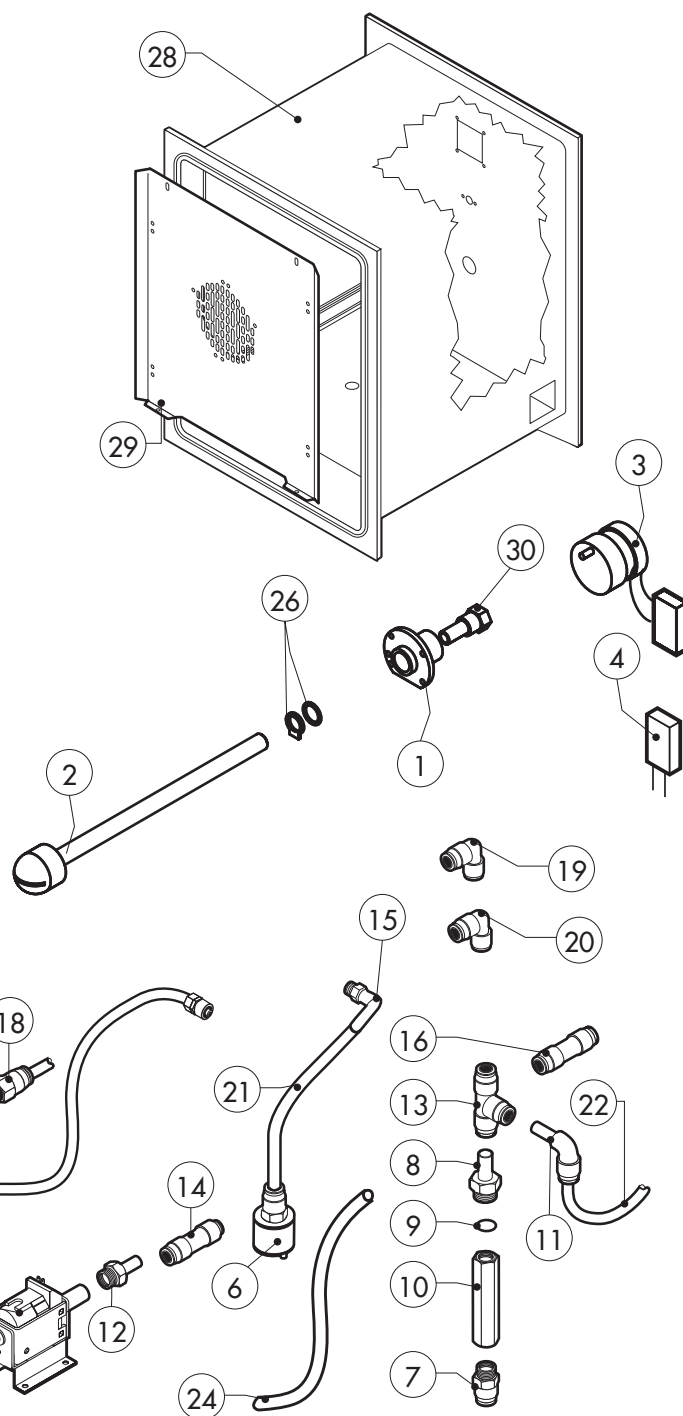
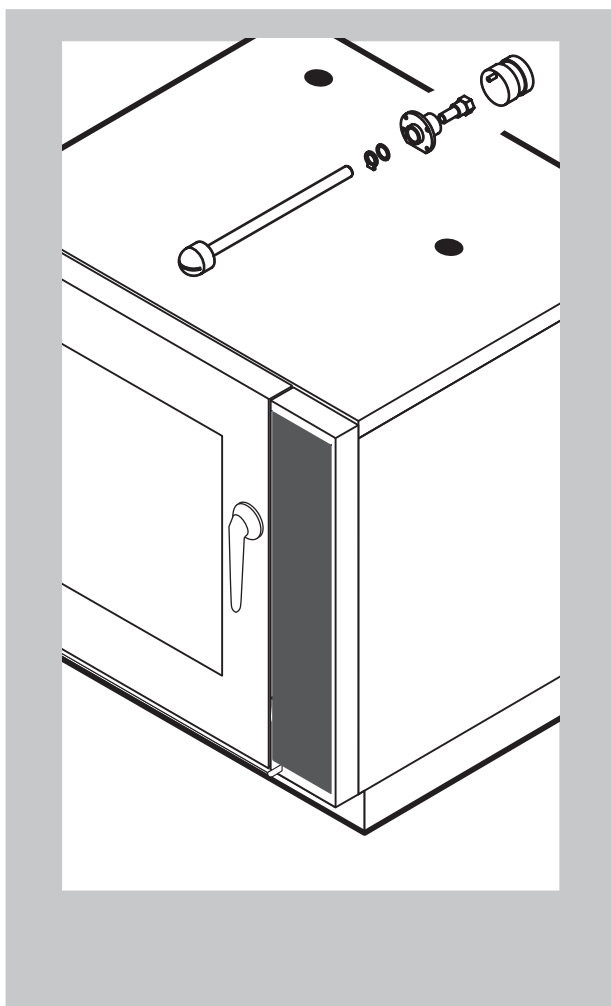
| POS. | CODE | PIECES | DESCRIPTION |
|------|------|--------|-------------|
| | | | |
| | | | |
| | | | |
| | | | |
| | | | |
| | | | |
| | | | |
| | | | |
| | | | |
| | | | |
| | | | |
| | | | |
| | | | |
| | | | |
| | | | |
| | | | |
| | | | |
| | | | |
| | | | |
| | | | |

*COMPONENT SUBMITTED TO CHANGEMENTS CAUSED BY TENSION
DIFFERENT FROM THE STANDARD (3N AC 400V 50HZ)



| POS. | CODE | PIECES | DESCRIPTION |
|------|-----------|--------|---|
| 1 | R65302100 | 1 | CONTROL PANEL P.C. BOARD "S" MOD |
| 2 | R65302240 | 1 | RELAY PC BOARD "S" MOD |
| 3 | R65302250 | 1 | MAIN PC BOARD "S" MOD |
| 4 | R65301940 | 2 | FRONT PC BOARD ENCODER |
| 5 | R65321120 | 1 | CORE TEMPERATURE PROBE |
| 6 | R65320920 | 1 | CORE TEMPERATURE PROBE FEMALE CONNECTOR |
| 7 | R65321020 | 1 | COVER FOR FEMALE CONNECTOR |
| 8 | R86020420 | 1 | CORE TEMPERATURE PROBE BOX |
| 9 | - | 1 | PLATE "S" |
| 10 | R69030280 | 2 | KNOB |
| 11 | R70044260 | 1 | CONTROL PANEL GASKET |
| 12 | R65301960 | 1 | PC BOARD BUZZER |
| | | | |
| | | | |
| | | | |
| | | | |
| | | | |
| | | | |
| | | | |
| | | | |
| | | | |

| POS. | CODE | PIECES | DESCRIPTION |
|------|------|--------|-------------|
| | | | |
| | | | |
| | | | |
| | | | |
| | | | |
| | | | |
| | | | |
| | | | |
| | | | |
| | | | |
| | | | |
| | | | |
| | | | |
| | | | |
| | | | |
| | | | |
| | | | |
| | | | |
| | | | |
| | | | |
| | | | |



| POS. | CODE | PIECES | DESCRIPTION |
|------|-----------|--------|--|
| 1 | R58007020 | 1 | WASHING SYSTEM FLANGE |
| 2 | R58007040 | 1 | WASHING SYSTEM INNER ASSEMBLY |
| 3 | R65090250 | 1 | WASHING GEARED MOTORS WITH CAPACITOR |
| 4 | R65110230 | 1 | CAPACITOR 0,27 µF |
| 5 | R65110600 | 1 | DETRGENT PUMP |
| 6 | R65110650 | 1 | BOTTOM FILTER |
| 7 | R62090508 | 1 | 10X1/4 STRAIGHT THREADED TERMINAL PIPE FITTING |
| 8 | R62090518 | 5 | 10X1/4 END SIDE PIPE FITTING (WITH TANG) |
| 9 | R70010050 | 6 | OR GASKETS |
| 10 | R65110640 | 2 | ANTI-BACK FLOW |
| 11 | R62090528 | 3 | ELBOW PIPE FITTING (WITH TANG) 10 X 10 |
| 12 | R62090608 | 1 | 8X1/8 END SIDE PIPE FITTING (WITH TANG) |
| 13 | R62090468 | 1 | "T" MIDDLING PIPE FITTING D.10 |
| 14 | R62090618 | 1 | 10-8 REDUCTION PIPE FITTING |
| 15 | R62090648 | 1 | ELBOW PIPE FITTING |
| 16 | R62090458 | 1 | STRAIGHT MIDDLING PIPE FITTING D.10 |
| 17 | R62090482 | 1 | RAPID MALE PIPE FITTING |
| 18 | R62090538 | 1 | 1/4" FEMALE STRAIGHT PIPE FITTING FOR D.8X6 PIPE |
| 19 | R62090633 | 1 | ELBOW PIPE FITTING BRASS D.10 |

| POS. | CODE | PIECES | DESCRIPTION |
|------|-----------|--------|---|
| 20 | R62090663 | 1 | ELBOW PIPE FITTING BRASS D.10x1/4" |
| 21 | R70070100 | 1 | PE D.8 MM X 6 DETERGENT FLEXIBLE PIPE |
| 22 | R70070070 | 1 | PE D.10 MM X7 WATER FLEXIBLE PIPE (3 MT LONG) |
| 23 | R70070080 | 1 | PE D.23 MM X13 FLEXIBLE PIPE (1 MT LONG) |
| 24 | R70070090 | 1 | PE D.12 MM X7 SILICONE PIPE (1 MT LONG) |
| 25 | R65110210 | 1 | SOLENOID VALVE 220V 50HZ |
| 26 | R70045120 | 1 | GASKETS KIT |
| 27 | R61630011 | 2 | METAL CLAMPS 12-22/9 |
| 28 | R18210431 | 1 | COOKING CABINET ASSEMBLY |
| 29 | R18422070 | 1 | FAN GUARD PANEL ASSEMBLY |
| 30 | R58007000 | 1 | ROTATING PIVOT |
| | | | |
| | | | |
| | | | |
| | | | |
| | | | |
| | | | |
| | | | |
| | | | |
| | | | |