



ABBATTITORE PENTAVALENTE

ESPLOSI RICAMBI / Dimensioni 790x720x850

PENTAVALENT BLAST CHILLER

SPARE SPARTS / Dimensions 790x720x850

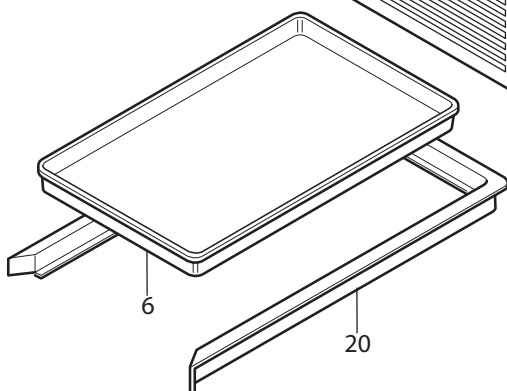
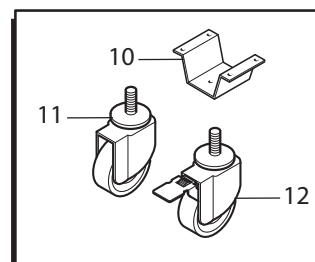
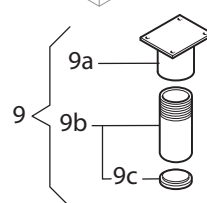
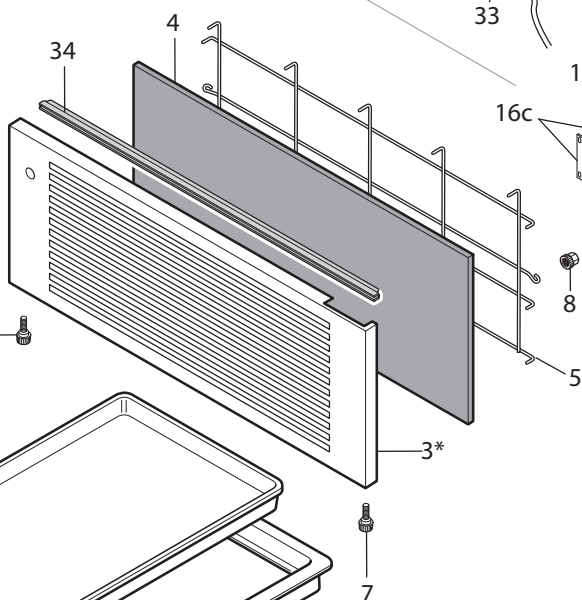
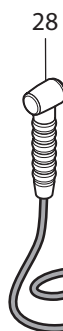
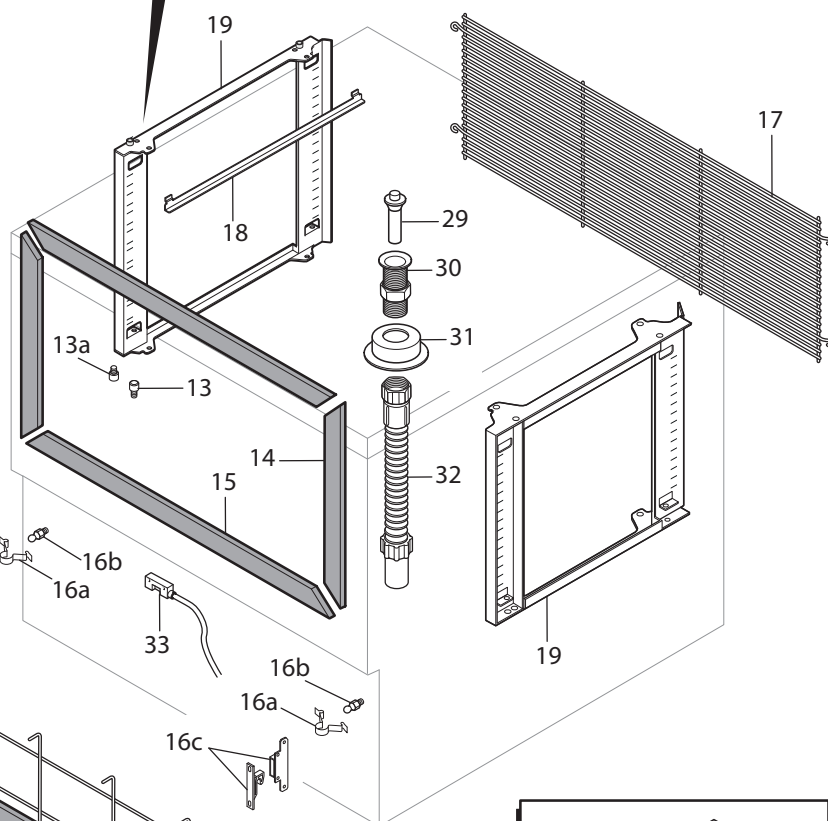
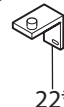
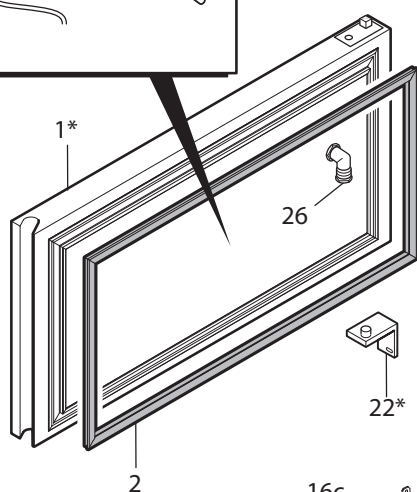
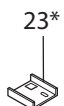
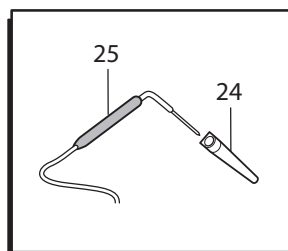
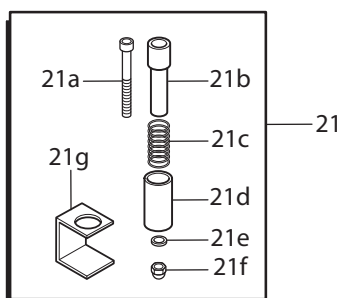
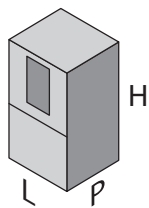
ABBATTITORE PENTAVALENTE
PENTAVALENT BLAST CHILLER

Dimensioni Modello
Model Dimensions

L790 - P720
H850 mm

TAV1

230 V
1PH+N 50Hz



* Kit inversione porta DX 1a+3a+22a+23a+23c
* Kit reversing door RX

* Kit inversione porta SX 1b+3b+22b+23b+23d
* Kit reversing door LX

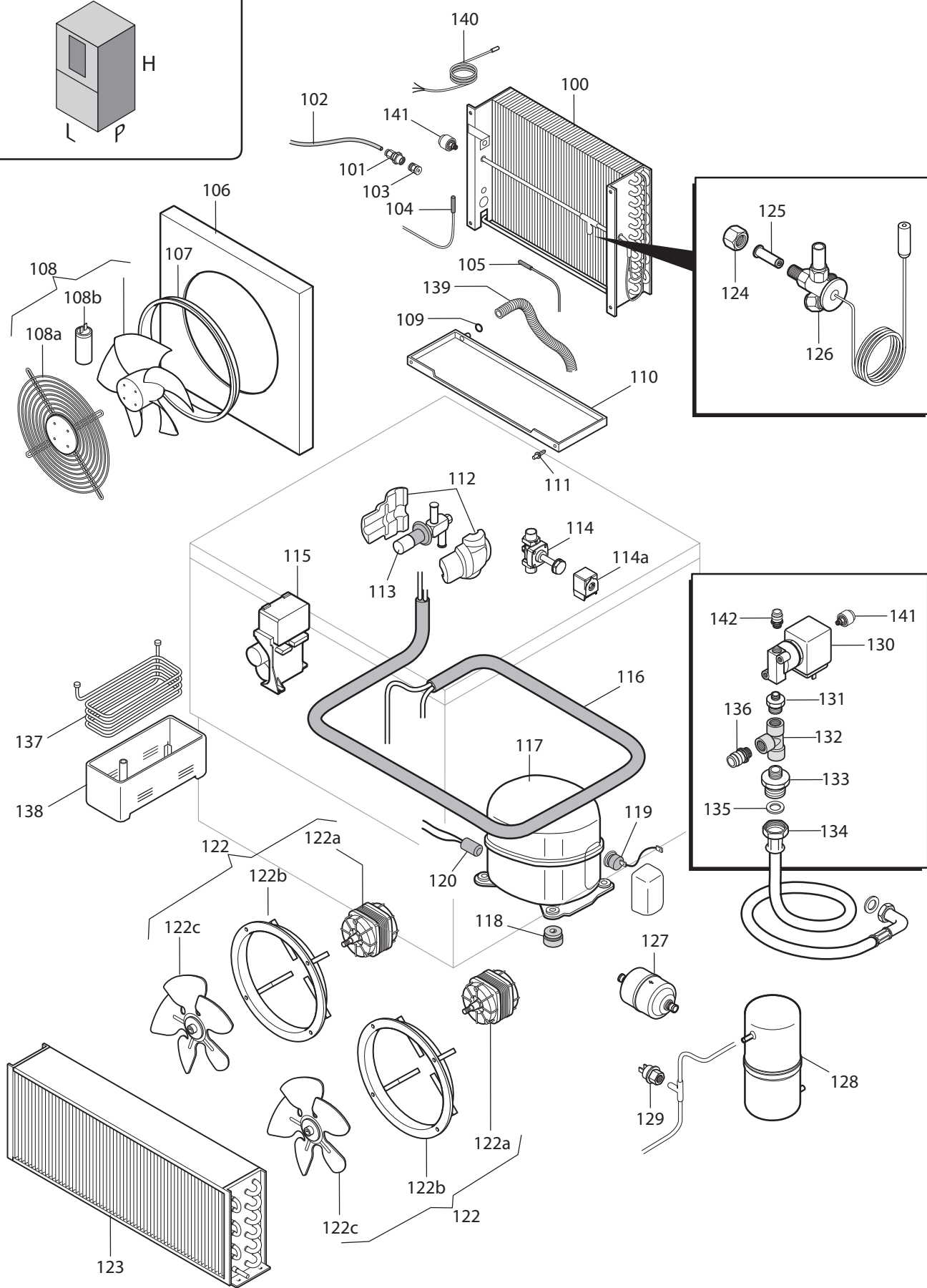
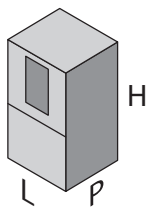
**ABBATTITORE PENTAVALENTE
PENTAVALENT BLAST CHILLER**

**Dimensioni Modello
Model Dimensions**

**L790 - P720
H850 mm**

TAV2

**230 V
1PH+N 50Hz**



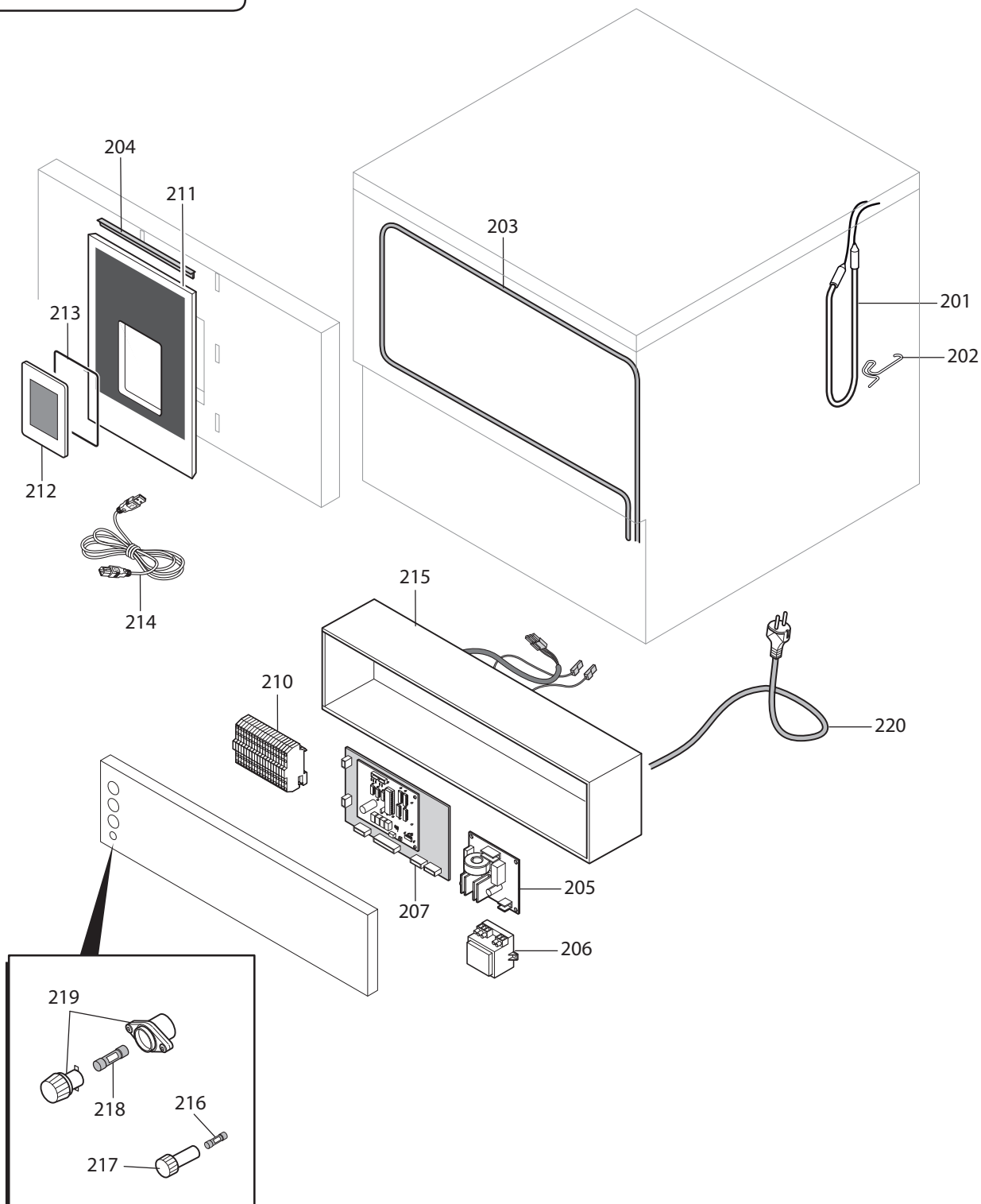
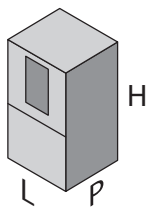
ABBATTITORE PENTAVALENTE
PENTAVALENT BLAST CHILLER

Dimensioni Modello
Model Dimensions

L790 - P720
H850 mm

TAV3

230 V
1PH+N 50Hz



| | | | |
|---|--|-----------------------|---------------------|
| ABBATTITORE PENTAVALENTE PENTAVALENT BLAST CHILLER | Dimensioni Modello Model Dimensions | L790 - P720 - H850 mm | 230 V 1PH+N 50Hz |
|---|--|-----------------------|---------------------|

| Posizione | Codice | Descrizione | Data Validità | Ricambi consigliati |
|-----------|-----------|---|-----------------|---------------------|
| 1a | FR6237050 | ASS. PORTA SCHIUMATA DX AB 051 PENTAV | | |
| 1b | FR6237350 | ASS. PORTA SCHIUM. SX ABB. 051 PENTAV | | |
| 2 | FR4501492 | NN22 GUAR.PORTA BF051 400X690 1630/07 | | |
| 3a | FR614B230 | ASS. PANN.INF.ANT. RAL 9005 051 PENTAV | | |
| 3b | FR614B370 | ASS. PANN.INF.ANT.SX RAL 9005 051 PENTAV | | |
| 4 | FR5110140 | FILTRO PPI 20 NERO 051 PENTAV 600X180X10 | | |
| 5 | FR6358600 | GRIGLIA SUPPORTO FILTRO AB 051 PENTAV | | |
| 6 | FR6350400 | BACINEL.RACCOGL COND.GN1/1 H50 PST NERO | | |
| 7 | FR2110980 | VITE M5X10 ZINC.TE.CIL.IN PLASTICA ZIGRI | | |
| 8 | FR2761070 | DADO M5X10 ZINC.TE CIL.IN PLASTICA ZIGR | | |
| 9 | FR6810911 | AS.PIED.INOX 2'R.70/100 AA60ECNR225CAG | | |
| 9a | FR6131500 | AS.SUPP.PIEDE-PIASTR.L=60 PIASTR.76X96 | | |
| 9b | FR3110280 | PIEDE INOX 2' GAS L=60 ABB 051 | | |
| 9c | FR4710740 | TAPPO X PIEDE 2' AB 051 PVC NERO | | |
| 10 | FR1223180 | SUPPORTO RUOTA D=80 TAVOLI STAR | | |
| 11 | FR6810420 | RUOTA S/F 2870 PJO 060/22 S75-M10x20 | | |
| 12 | FR6810430 | RUOTA C/F 2877 PJO 060/22 S75-M10x20 | | |
| 13 | FR2118150 | PERNO AGGANCIO R/GUIDE INF. AB 051 PENTAV | | |
| 13a | FR2118160 | PERNO AGGANCIO R/GUIDE AB PENTAV | | |
| 14 | FR4407120 | AB16 PREST.BAT.GUA.L= 447 ORIZ AB051PEN | | |
| 15 | FR4407110 | AB16 PROF.EST.BAT.GUA.L= 737 ORIZ AB PEN | | |
| 16a | FR1168170 | MOLLA X PERNO FILETTATO M5 A SCATTO | fino 30-11-2016 | |
| 16b | FR1168160 | PERNO FILETTATO M5 A SCATTO ART.R 6333 | fino 30-11-2016 | |
| 16c | FR910200 | KIT CHIUSURA SPINTA ABB. PENTAVALENTI | da 1-12-2016 | |
| 17 | FR6352062 | GRIGLIA PROTEZ.POST.AB.051 C/GRADINO '14 | | |
| 18 | FR1238870 | GUIDA SUPTEGLIE L=345 AB 051:161 PENTAV | | |
| 19 | FR615C700 | ASS.STRUTTURA REGGI GUIDE AB 051 PENTAV | | |
| 20 | FR1220521 | SUPP.BACINELL.RAC.COND.051/081/121/161 | | |
| 21 | FR966412 | KIT AGGANCIO SUP REGGIGUIDE AB PENTAV | | |
| 21a | FR2729220 | VITE TCEI M5x40 INOX A2 UNI 5931 | | |
| 21b | FR2118170 | PIOLO AGGANCIO REGGI GUIDE AB PENTAV | | |
| 21c | FR3410530 | MOLLA AGGANCIO REGGI GUIDE AB PENTAV | | |
| 21d | FR2118180 | GUIDA PIOLO AGG.REGGI GUIDE AB PENTAV | | |
| 21e | FR2738030 | RONDELLA PIANA DIN 125-A d.5 INOX A2 | | |
| 21f | FR2768150 | DADO CIECO M5 INOX | | |
| 21g | FR2118190 | FERMO PIOLO AGG.REGGI GUIDE AB PENTAV | | |
| 22a | FR6419260 | CERNIERA INFER. DX PRESSOFUSA AB PENTAV | | |
| 22b | FR6419270 | ASS.CERN.INF.SX PASS.CAVI.INF AB PENTAV | | |
| 23a | FR112C250 | PIASTR. SUP. REGOL.PORTA DX 20°AB PENTAV | | |
| 23b | FR112C280 | PIASTR. SUP. REGOL.PORTA SX 20°AB PENTAV | | |
| 23*c | FR112C330 | PIASTR.CIECA ABB PENTA. PORTA DX | | |
| 23*d | FR112C300 | PIASTR. CIECA ABB. PENTAV PORTA SX | | |

| Posizione | Codice | Descrizione | Data Validità | Ricambi consigliati |
|-----------|------------|--|-----------------|---------------------|
| 24 | FR112C120 | CUSTODIA SONDA AL CUORE COPERCHIO MCP | | |
| 25 | FR663A800 | SONDA SPIL PT1000 4 LIV 90°RISC 1.5M 12V | | |
| 26 | FR4718631 | PRESSAC. METALLO SKINDICHT PG.9 52004190 | | |
| 27 | FR2471990 | INNESTO FEMM.VALVOL.PASSAP. PMCDI1204BLK | | |
| 28 | FR997433 | KIT DOCCETTA AB PENTAV | | |
| 29 | FR4710700 | TAPPO PILETTA DI SCARICO 1"G ABS H=74 | | |
| 30 | FR6510011 | ASS.PILETTA AP3 1"G L=80 CON GHIERA | | |
| 31 | FR4740100 | PROTEZIONE PER SCHIUMATURA PILETTA | | |
| 32 | FR6510140 | RACCORDO SCARICO 1"G ABB051 L=40CM | | |
| 33 | FR6640291 | MICROPORTA MAGNETICO STEM E510 | | |
| 34 | | | | |
| 100 | FR652A540 | BATTERIA EVAPOR. 3 RANGHI AB 051 PENTAV | | |
| 101 | FR2471920 | MANIC. RIDUZ. 3010 1/8-1/4" ART.27530184 | | |
| 102 | FR4618261 | TUBO FLEX -60+240°C PTFE 2,5X4,0 mm PENT | | |
| 103 | FR2118120 | UG. X GENER.UMIDITA'1/4 CFE411/AB PENTAV | | |
| 104 | FR6631540 | SONDA PTC GRIGIA SILIC.L=2500 CELLA | | |
| 105 | FR6631260 | SONDA PTC ROSSA SILIC.L=2500 EVAPO | | |
| 106 | FR1344370 | CONVOGL.EVAP. VENTIL D=250 AB 051 PENTAV | | |
| 107 | FR4740255 | COLLARE CONVOGLIAT.D=250 AB PC/ABS NERO | | |
| 108 | FR6678570 | VENT.HIDRIA D250 2P R09R-2525P-2M-3510AL | | |
| 108a | FR6352040 | GRIGLIA PROTEZ.INOX VENTIL D=250 AB UL | | |
| 108b | FR6633530 | CONDENSAT. ELETT.4MF/400 VOLT C/FASTON | | |
| 109 | BN14410009 | O-RING Ø10 INT. SPESSORE 2,5MM | | |
| 110 | FR4740276 | VASCHETTA R.COND. AB P700 PA6 30% F.V. | | |
| 111 | FR2708040 | RIVETTO TB A2/A2 DIN7337 d. 4 x 6 FAR | | |
| 112 | FR4711850 | GUSCIO ISOLANTE COZCRO04 X SPORLAN CRO4 | | |
| 113 | FR6860040 | REGOL PRESSIONE CRO-4-0/50+Filtro (R404A | | |
| 114 | FR6850332 | VAL.SOLEN.MDF08021 6MM MDF A03-3H005 | | |
| 114a | FR6851142 | BOBINA MQ-A0322G-000001 220/240V 50/60HZ | | |
| 115 | FR663A850 | BOX EL.1272253 EMBRACO NT2180GK 230/1/50 | | |
| 116 | FR323B380 | TUBO SCAMB.D=6-10-16 AB 051 PENTAV | | |
| 117 | FR6682990 | COMPR.O NT 2180GK R404 230/1/50 | | |
| 118 | NO CODE | | | |
| 119 | NO CODE | | | |
| 120 | NO CODE | | | |
| 122 | FR6670590 | AS.VENTIL.10 W D=200-34°C/ANELLO TAGLIAT | | |
| 122a | FR6671400 | MOTORE MOD.NET1T10ZVN002 | | |
| 122b | FR6671420 | ANEL VEN.CO.AB31/51/81/121 MOD.3255118 | | |
| 112c | FR6671410 | VENTOLA MOD.4012201 | | |
| 123 | FR652A100 | CONDENSATORE RIV. COMPACT 0950440C50 | | |
| 124 | FR6851210 | ADATTATORE VALV.ODF 6MM 68-2063 DANFOSS | fino 31-07-2016 | |
| 124 | FR2470040 | RACCORDO FILETTATO OT 1/2'SAE D=12 | da 1-08-2016 | |

| | | | |
|---|--|-----------------------|---------------------|
| ABBATTITORE PENTAVALENTE PENTAVALENT BLAST CHILLER | Dimensioni Modello Model Dimensions | L790 - P720 - H850 mm | 230 V 1PH+N 50Hz |
|---|--|-----------------------|---------------------|

| Posizione | Codice | Descrizione | Data Validità | Ricambi consigliati |
|-----------|-----------|--|-----------------|---------------------|
| 125 | FR6851310 | ORIFIZIO N.01 VALV.ODF 068-2091 C/FILTRO | fino 31-07-2016 | |
| 125 | FR6852610 | ORIFIZ.VALV. RFKA 0023-01 C/FILT. SANHUA | da 1-08-2016 | |
| 126 | FR6851180 | VALV.TS2 68Z3436 ODF -40-15 C/MOP R404 | fino 31-07-2016 | |
| 126 | FR6852680 | VALV.T. SANHUA RFKA03-3.4-04 C/M R404 | da 1-08-2016 | |
| 127 | FR6525570 | FILTRO DISIDRATORE ODF DML032S 023Z4551 | | |
| 128 | FR6521550 | RICEVITORE LIQUIDO 0,58 LT 065/205VS00 | | |
| 129 | FR6635030 | PRESSOST.DANFOSS CB 061F8486 ACB2UB136 | | |
| 130 | FR6860150 | ELETTROVALV. ACQUA 3/8" CFE411/AB PENTAV | | |
| 131 | FR2471960 | NIPPLO RID.CIL.1/8-1/4"ART.020300001ATNB | | |
| 132 | FR2471940 | RACC. T MASC.LATER.1/4"ART.04050000103NB | | |
| 133 | FR2471950 | RIDUZ.CILIND. 3/4"-1/4"ART.020900001EDNT | | |
| 134 | FR6860000 | GOMMA ALIMENTAZ.IDR.3/4 GAS (L=3000 '15) | | |
| 135 | FR6860010 | FILTRO X GOMMA ALIMENT.IDR.3/4' | | |
| 136 | FR2471980 | RACC.DIR.M.CIL1/4"TUBO4-6 ART.5002000004 | | |
| 137 | FR323B430 | TUBO SERPENTINA EVAP-COND AB 051 PENTAV | | |
| 138 | FR4740240 | VASCHET.EVAPACQUA CONDENSE ABB.NEW | | |
| 139 | FR5720110 | GUAINA SPIRALATA GRIGIA D=16 PVC | | |
| 140 | FR6622490 | TERMOS.BIMET. 105°C/CAVO L=3MT AB PENTAV | | |
| 141 | FR2471930 | RACC.DIR.M.CIL 50020 4-1/8" ART.27521304 | | |
| 142 | FR2472010 | RACC. DRITTO MASCH. D6 M5 ART.5002000020 | | |
| 201 | FR6622440 | RES.CORAZZATA 230V 500W AB 051 PENTAV | | |
| 202 | FR3410540 | MOLLA FISSAGGIO RESIST. AB PENTAV | | |
| 203 | FR6621661 | RESIS.CORNICE PORTA ABB051 15W/M | | |
| 204 | NO CODE | | | |
| 205 | FR6635190 | SCHEDA ESPANS.TAGLIO FASE 650W 50HZ PWM | | |
| 206 | FR663A680 | TRASFORMATORE 20VA 230/12V AB PENTAV | | |
| 207 | FR663A670 | SCHEDA DI POTENZA EVCLP33BZ2E AB PENTAV | | |
| 210 | FR669A220 | CABLAG. SCAT. EL. AB 051 230/1/50-60 | | |
| 211 | FR930182 | ASS.CRU.NERO+VET+CORN AB051/081 PENT | | |
| 212 | FR663A660 | MODULO DISPLAY7"EVCLC300XX02 AB PENTAV | | |
| 213 | FR5430260 | GUARNIZIONE DISPLAY 7" AB PENTAV | | |
| 214 | FR5740270 | CAVO USB 2.0 L=0,5M A FEM/JST 1256800336 | | |
| 215 | FR6837670 | ASS. SCAT. ELET. MONOFASE AB 051 PENTAV | | |
| 216 | FR966117 | FUSIBI 5X20 RAPIDO 500MA (10PZ) | | |
| 217 | FR6648590 | PORTAFUSIBILE FH-B528H FUSIT 5X20 | | |
| 218 | FR995919 | KIT FUSIBILI 10A AM 10X38 (5PZ AM) | | |
| 219 | FR6641260 | PORTAFUS HK10380 X FU10X38 WEBER 32A 1POLO | | |
| 220 | FR6691540 | CAVO ALIMENTAZIONE AR-TR SCHUCO | | |

