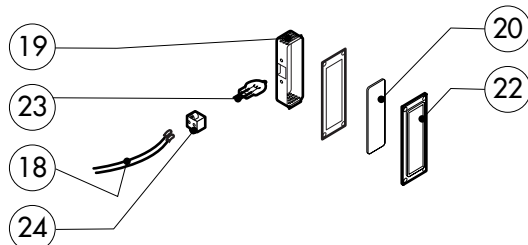
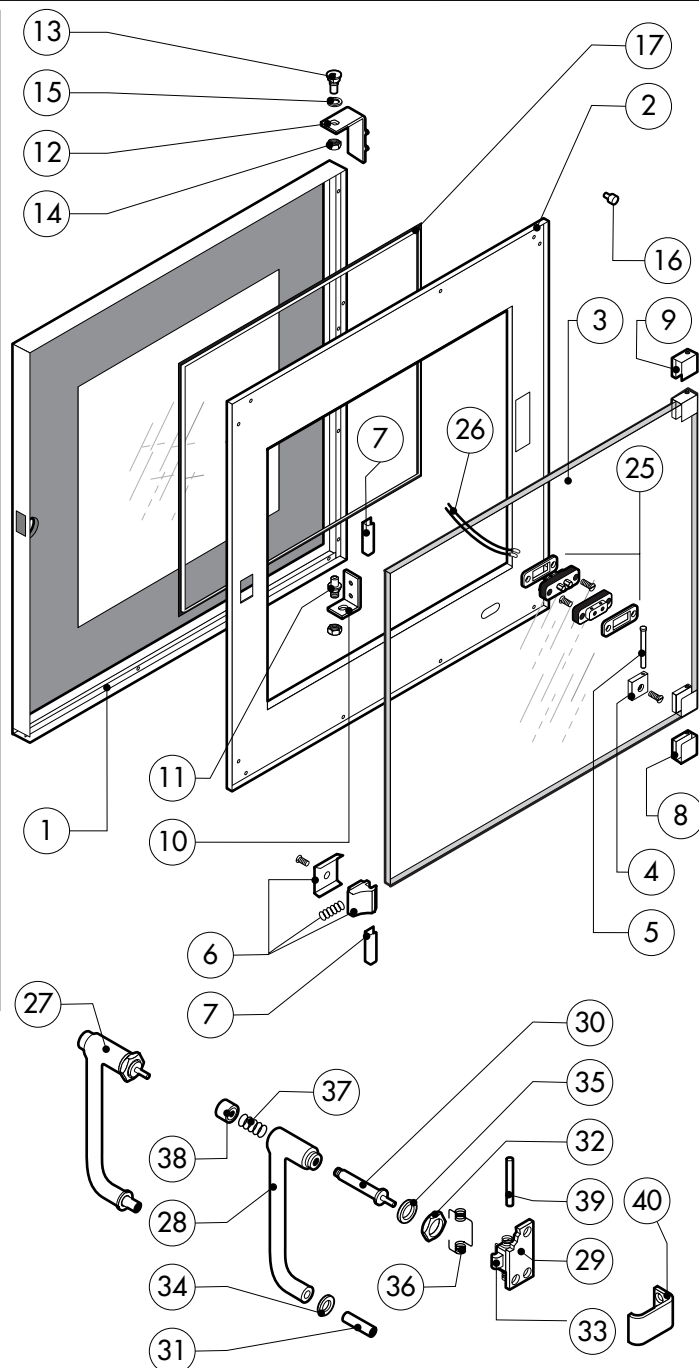
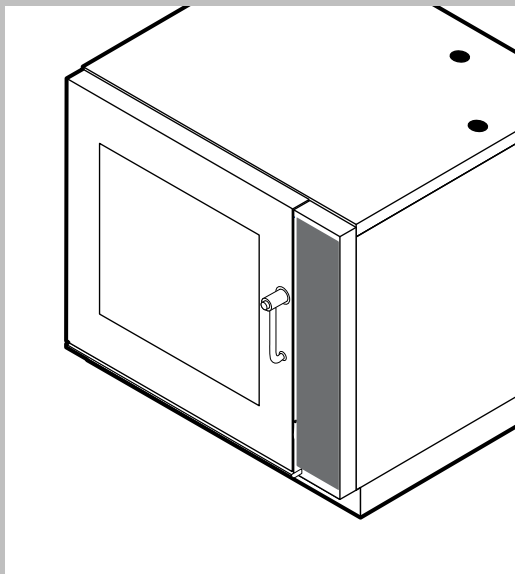


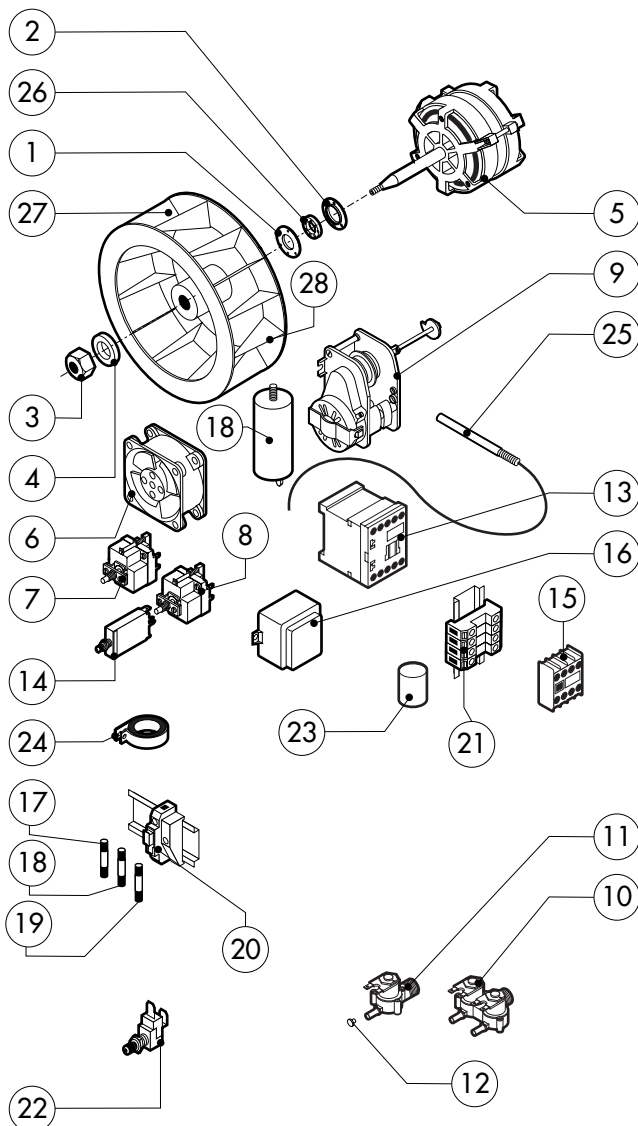
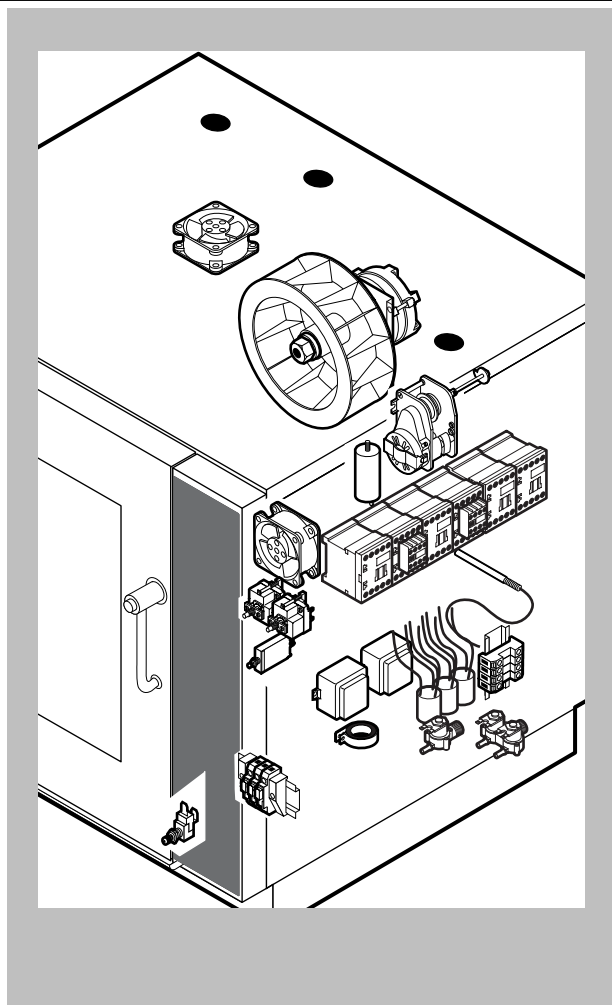
| POS. | CODE      | PIECES | DESCRIPTION               |
|------|-----------|--------|---------------------------|
| 1    | R18100040 | 1      | DOOR ASSEMBLY             |
| 2    | R18210860 | 1      | CONTROL PANEL             |
| 3    | R11200650 | 1      | SPRITZER EXTENSION        |
| 4    | R11202270 | 1      | SPRITZER UNION            |
| 5    | R18210840 | 1      | COOKING CABINET ASSEMBLY  |
| 6    | R18404240 | 1      | FAN GUARD PANEL ASSEMBLY  |
| 7    | R18404330 | 2      | SIDE PANEL                |
| 8    | R18404320 | 1      | REAR PANEL                |
| 9    | R18418900 | 1      | COVER PANEL               |
| 10   | R58006400 | 4      | FAN GUARD FASTENING SCREW |
| 11   | R70044230 | 1      | FRONT GASKET              |
| 12   | R18201830 | 1      | REMOVABLE RACK DX         |
| 13   | R18201840 | 1      | REMOVABLE RACK SX         |
|      |           |        |                           |
|      |           |        |                           |
|      |           |        |                           |
|      |           |        |                           |
|      |           |        |                           |
|      |           |        |                           |
|      |           |        |                           |
|      |           |        |                           |

| POS. | CODE | PIECES | DESCRIPTION |
|------|------|--------|-------------|
|      |      |        |             |
|      |      |        |             |
|      |      |        |             |
|      |      |        |             |
|      |      |        |             |
|      |      |        |             |
|      |      |        |             |
|      |      |        |             |
|      |      |        |             |
|      |      |        |             |
|      |      |        |             |
|      |      |        |             |
|      |      |        |             |
|      |      |        |             |
|      |      |        |             |
|      |      |        |             |
|      |      |        |             |
|      |      |        |             |
|      |      |        |             |
|      |      |        |             |
|      |      |        |             |



| POS. | CODE      | PIECES | DESCRIPTION                 |
|------|-----------|--------|-----------------------------|
| 1    | R18202060 | 1      | DOOR                        |
| 2    | R18202010 | 1      | INNER DOOR PANEL            |
| 3    | R71201500 | 1      | INNER DOOR GLASS            |
| 4    | R58001760 | 2      | INNER GLASS SOLID HINGE     |
| 5    | R58001770 | 2      | INNER GLASS HINGE PIN       |
| 6    | R58001780 | 2      | INNER GLASS CATCH KIT       |
| 7    | R11401340 | 2      | TOP "C" PROFILE             |
| 8    | R18203910 | 1      | LOWER SUPPORT GLASS         |
| 9    | R18203920 | 1      | TOP SUPPORT GLASS           |
| 10   | R18404500 | 1      | LOWER DOOR HINGE            |
| 11   | R58002520 | 1      | LOWER HINGE PIN             |
| 12   | R11200560 | 1      | UPPER DOOR HINGE            |
| 13   | R58002150 | 1      | HINGE PIN                   |
| 14   | R58004050 | 2      | NUT FOR UPPER DOOR HINGE    |
| 15   | R10401710 | 1      | WASHER FOR UPPER DOOR HINGE |
| 16   | R70050100 | 6      | GLASS SILICON SPACERS       |
| 17   | R70044650 | 1      | GLASS GASKET                |
| 18   | R66110320 | 1      | DOOR LAMPS CABLE SET        |
| 19   | R11401440 | 1      | LAMP COVER                  |
| 20   | R71500150 | 1      | GLASS LAMP                  |
| 21   | R70044200 | 1      | LAMP GASKET                 |

| POS. | CODE      | PIECES | DESCRIPTION                         |
|------|-----------|--------|-------------------------------------|
| 22   | R11401450 | 1      | GLASS HOLDER LAMP FLANGE            |
| 23   | R65270020 | 1      | LIGHT 20W 12V G4                    |
| 24   | R65270450 | 1      | LIGHT SOCKET                        |
| 25   | R65260750 | 1      | LAMPS CONTACT BLOCK                 |
| 26   | R66110300 | 1      | LAMPS CONTACT CABLE SET             |
| 27   | R69015000 | 1      | DOOR HANDLE ASSEMBLY                |
| 28   | R09200230 | 1      | DOOR HANDLE                         |
| 29   | R10100110 | 1      | PRONG FLANGE                        |
| 30   | R58003240 | 1      | DOOR HANDLE BUTTON ROD              |
| 31   | R58004270 | 1      | DOOR HANDLE SPACER                  |
| 32   | R58004830 | 1      | RING NUT M18x1                      |
| 33   | R58005050 | 1      | DOOR HANDLE PRONG                   |
| 34   | R58005340 | 1      | DOOR HANDLE LOWER INSULATION WASHER |
| 35   | R58005350 | 1      | DOOR HANDLE UPPER INSULATION WASHER |
| 36   | R61620012 | 1      | DOOR HANDLE CATCH SPRING            |
| 37   | R61620041 | 1      | DOOR HANDLE BUTTON SPRING           |
| 38   | R69031190 | 1      | DOOR HANDLE PUSH BUTTON             |
| 39   | R58002160 | 1      | DOOR HANDLE PRONG PIN               |
| 40   | R18202020 | 1      | DOOR HANDLE PRONG COUPLER           |



#### TWO SPEED FAN

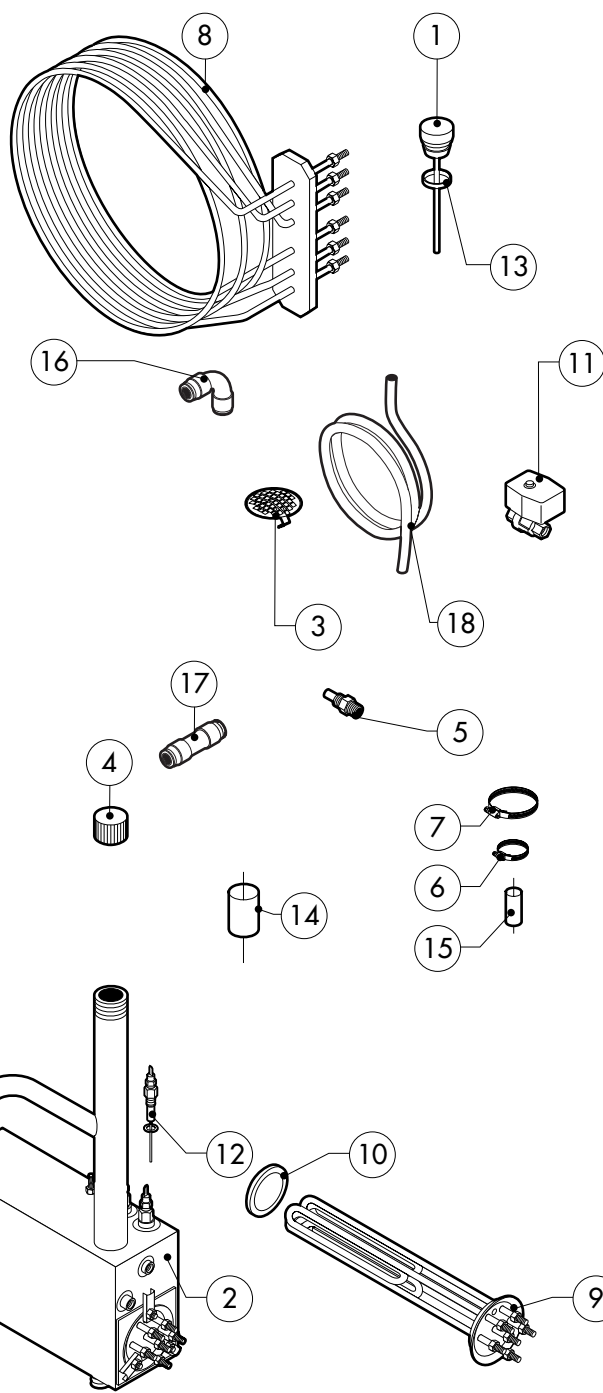
| POS. | CODE       | PIECES | DESCRIPTION                             |
|------|------------|--------|---|
| 5    | *R65040431 | 1      | MOTOR KW 025/005 2-4P 220-240V KIT      |
| 13   | *R65140700 | 8      | CONTACTOR DIL M9-01 4KW-20A             |
| 15   | *R65140730 | 3      | AUX.CONTACT 1L+1R DILM32-XH11 1 4-7,5KW |
| 29   | *R65160300 | 1      | THERMIC PROTECTION T12-211S-0,8A        |
| 30   | R65080150  | 1      | 2 POSITIONS SELECTOR SWITCH             |



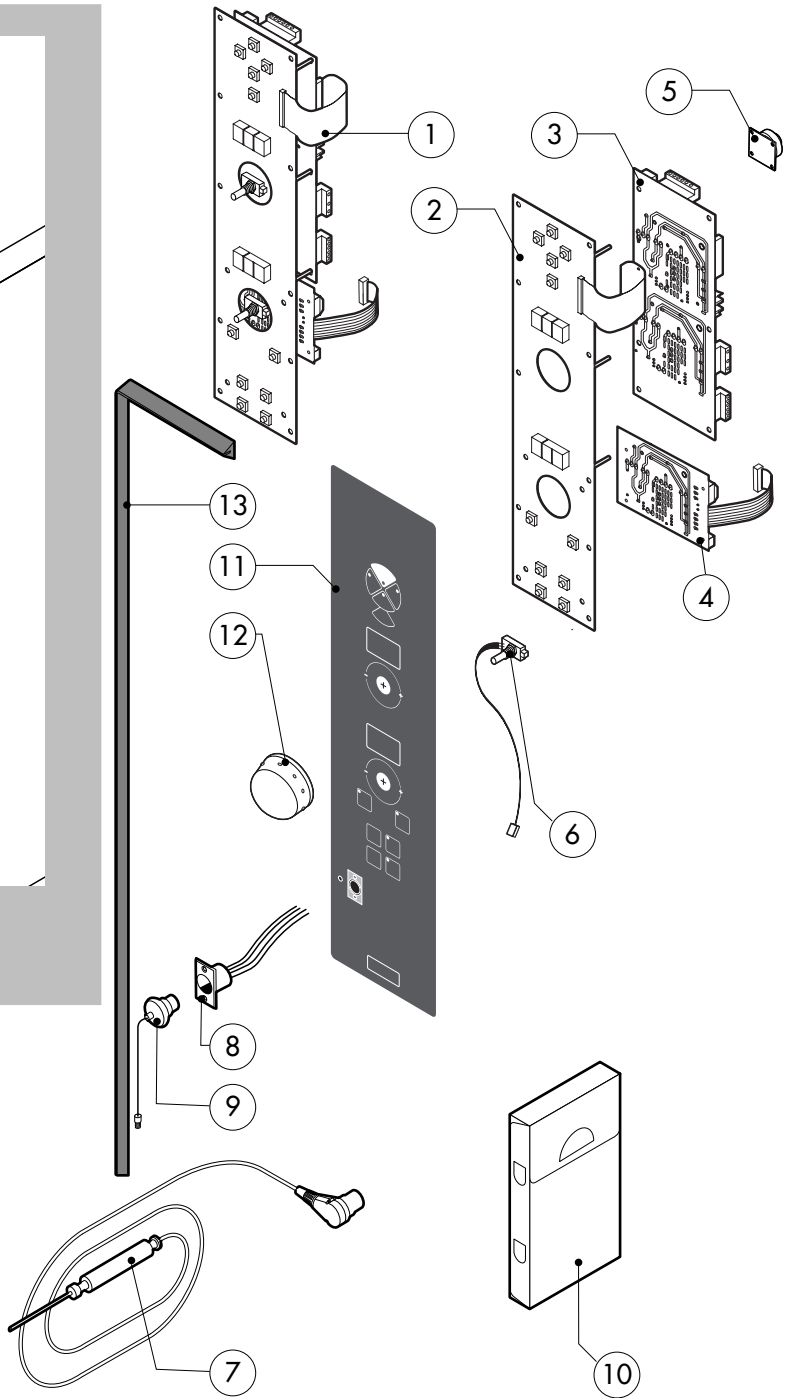
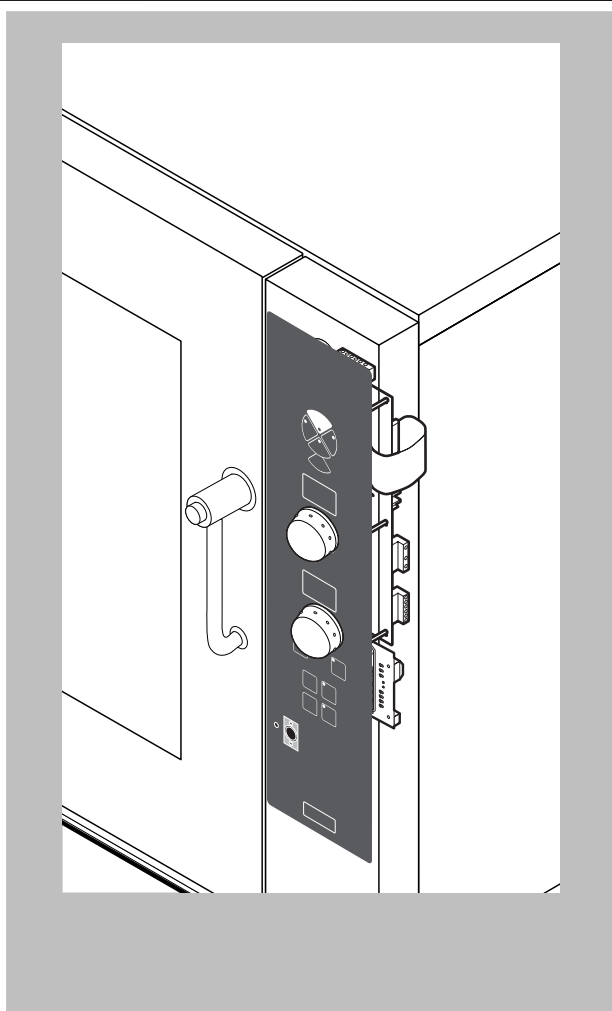
| POS. | CODE       | PIECES | DESCRIPTION                             |
|------|------------|--------|---|
| 1    | R58003860  | 1      | MOTOR GASKET BRASS FLANGE               |
| 2    | R58003870  | 1      | MOTOR GASKET BRASS COUNTER FLANGE       |
| 3    | R58004020  | 1      | FAN SECURITY NUT M10 SX                 |
| 4    | R61400052  | 1      | FAN WASHER Ø 21/10.5                    |
| 5    | *R65040421 | 1      | MOTOR KW 025 2P 220-240V KIT            |
| 6    | R65060050  | 2      | COMPONENTS VENTILATION MOTOR Ø 120      |
| 7    | R65070350  | 1      | CHAMBER SAFETY THERMOSTAT               |
| 8    | R65070081  | 1      | STEAM GENERATOR SAFETY THERMOSTAT       |
| 9    | R65095000  | 1      | DAMPER SYSTEM                           |
| 10   | R65110210  | 1      | SOLENOID VALVE 220V 50HZ                |
| 11   | R65110200  | 1      | SOLENOID VALVE 220V 50HZ                |
| 12   | R65110500  | 1      | 10 LT/H WATER FLOW REDUCER              |
| 13   | *R65140700 | 6      | CONTACTOR DIL M9-01 4KW-20A             |
| 14   | *R65160320 | 1      | THERMIC PROTECTION T12-211S-2A          |
| 15   | *R65140730 | 2      | AUX.CONTACT 1L+1R DILM32-XH11 1 4-7,5KW |
| 16   | R65180420  | 2      | TRANSFORMER 20VA                        |
| 17   | R65200200  | 1      | FUSE 2A                                 |
| 18   | R65200320  | 1      | FUSE 0.200A (T)                         |
| 19   | R65200086  | 1      | FUSE 0.125A (T)                         |

| POS. | CODE       | PIECES | DESCRIPTION                   |
|------|------------|--------|-------------------------------|
| 20   | R65210020  | 3      | FUSE CARRIER                  |
| 21   | R65220090  | 1      | TERMINAL BOARD                |
| 22   | R65260540  | 1      | DOOR SWITCH                   |
| 23   | *R65280200 | 3      | INTERFERENCE SUPPRESSOR       |
| 24   | *R65280490 | 1      | FERRITE FT35                  |
| 25   | R65325000  | 3      | PROBE PT100                   |
| 26   | R70020040  | 1      | MOTOR GASKET                  |
| 27   | *R75400400 | 1      | FAN Ø 220x78/12 50HZ P.D. KIT |
| 28   | R75400420  | 1      | FAN Ø 220x78/8 60HZ P.D. KIT  |

\*COMPONENT SUBMITTED TO CHANGEMENTS CAUSED BY TENSION DIFFERENT FROM THE STANDARD (3N AC400V 50HZ)

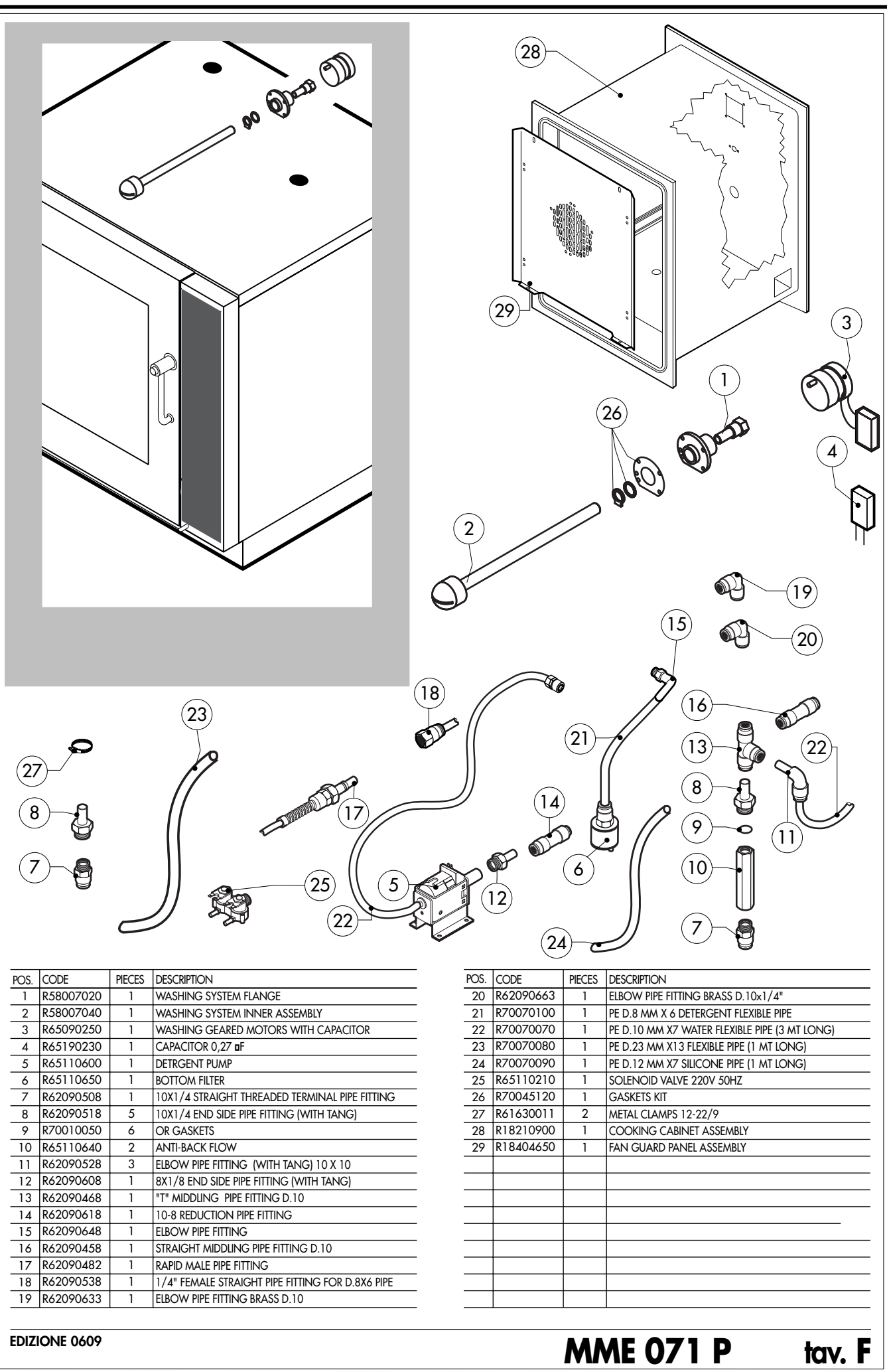
[illegible]

\*COMPONENT SUBMITTED TO CHANGEMENTS CAUSED BY TENSION DIFFERENT FROM THE STANDARD (3N AC400V 50HZ)



| POS. | CODE      | PIECES | DESCRIPTION                             |
|------|-----------|--------|---|
| 1    | R65302160 | 1      | CONTROL PANEL P.C. BOARD "P" MOD        |
| 2    | R65302180 | 1      | RELAY PC BOARD "P" MOD                  |
| 3    | R65302190 | 1      | MAIN PC BOARD "P" MOD                   |
| 4    | R65301480 | 1      | BOILER CONTROL PC BOARD "P" MOD         |
| 5    | R65301440 | 1      | PC BOARD BUZZER                         |
| 6    | R65301450 | 2      | FRONT PC BOARD ENCODER                  |
| 7    | R65321120 | 1      | CORE TEMPERATURE PROBE                  |
| 8    | R65320920 | 1      | CORE TEMPERATURE PROBE FEMALE CONNECTOR |
| 9    | R65321020 | 1      | COVER FOR FEMALE CONNECTOR              |
| 10   | R86020420 | 1      | CORE TEMPERATURE PROBE BOX              |
| 11   | -         | 1      | PLATE "P"                               |
| 12   | R69030260 | 2      | KNOB                                    |
| 13   | R70044250 | 1      | CONTROL PANEL GASKET                    |
|      |           |        |   |
|      |           |        |   |
|      |           |        |   |
|      |           |        |   |
|      |           |        |   |
|      |           |        |   |
|      |           |        |   |
|      |           |        |   |
|      |           |        |   |

| POS. | CODE | PIECES | DESCRIPTION |
|------|------|--------|-------------|
|      |      |        |             |
|      |      |        |             |
|      |      |        |             |
|      |      |        |             |
|      |      |        |             |
|      |      |        |             |
|      |      |        |             |
|      |      |        |             |
|      |      |        |             |
|      |      |        |             |
|      |      |        |             |
|      |      |        |             |
|      |      |        |             |
|      |      |        |             |
|      |      |        |             |
|      |      |        |             |
|      |      |        |             |
|      |      |        |             |
|      |      |        |             |
|      |      |        |             |
|      |      |        |             |



| POS. | CODE      | PIECES | DESCRIPTION                                      |
|------|-----------|--------|--|
| 1    | R58007020 | 1      | WASHING SYSTEM FLANGE                            |
| 2    | R58007040 | 1      | WASHING SYSTEM INNER ASSEMBLY                    |
| 3    | R65090250 | 1      | WASHING GEARED MOTORS WITH CAPACITOR             |
| 4    | R65190230 | 1      | CAPACITOR 0,27 µF                                |
| 5    | R65110600 | 1      | DETRGENT PUMP                                    |
| 6    | R65110650 | 1      | BOTTOM FILTER                                    |
| 7    | R62090508 | 1      | 10X1/4 STRAIGHT THREADED TERMINAL PIPE FITTING   |
| 8    | R62090518 | 5      | 10X1/4 END SIDE PIPE FITTING (WITH TANG)         |
| 9    | R70010050 | 6      | OR GASKETS                                       |
| 10   | R65110640 | 2      | ANTI-BACK FLOW                                   |
| 11   | R62090528 | 3      | ELBOW PIPE FITTING (WITH TANG) 10 X 10           |
| 12   | R62090608 | 1      | 8X1/8 END SIDE PIPE FITTING (WITH TANG)          |
| 13   | R62090468 | 1      | "T" MIDLING PIPE FITTING D.10                    |
| 14   | R62090618 | 1      | 10-8 REDUCTION PIPE FITTING                      |
| 15   | R62090648 | 1      | ELBOW PIPE FITTING                               |
| 16   | R62090458 | 1      | STRAIGHT MIDLING PIPE FITTING D.10               |
| 17   | R62090482 | 1      | RAPID MALE PIPE FITTING                          |
| 18   | R62090538 | 1      | 1/4" FEMALE STRAIGHT PIPE FITTING FOR D.8X6 PIPE |
| 19   | R62090633 | 1      | ELBOW PIPE FITTING BRASS D.10                    |

| POS. | CODE      | PIECES | DESCRIPTION                                   |
|------|-----------|--------|---|
| 20   | R62090663 | 1      | ELBOW PIPE FITTING BRASS D.10x1/4"            |
| 21   | R70070100 | 1      | PE D.8 MM X 6 DETERGENT FLEXIBLE PIPE         |
| 22   | R70070070 | 1      | PE D.10 MM X7 WATER FLEXIBLE PIPE (3 MT LONG) |
| 23   | R70070080 | 1      | PE D.23 MM X13 FLEXIBLE PIPE (1 MT LONG)      |
| 24   | R70070090 | 1      | PE D.12 MM X7 SILICONE PIPE (1 MT LONG)       |
| 25   | R65110210 | 1      | SOLENOID VALVE 220V 50HZ                      |
| 26   | R70045120 | 1      | GASKETS KIT                                   |
| 27   | R61630011 | 2      | METAL CLAMPS 12-22/9                          |
| 28   | R18210900 | 1      | COOKING CABINET ASSEMBLY                      |
| 29   | R18404650 | 1      | FAN GUARD PANEL ASSEMBLY                      |
|      |           |        |   |
|      |           |        |   |
|      |           |        |   |
|      |           |        |   |
|      |           |        |   |
|      |           |        |   |
|      |           |        |   |
|      |           |        |   |
|      |           |        |   |