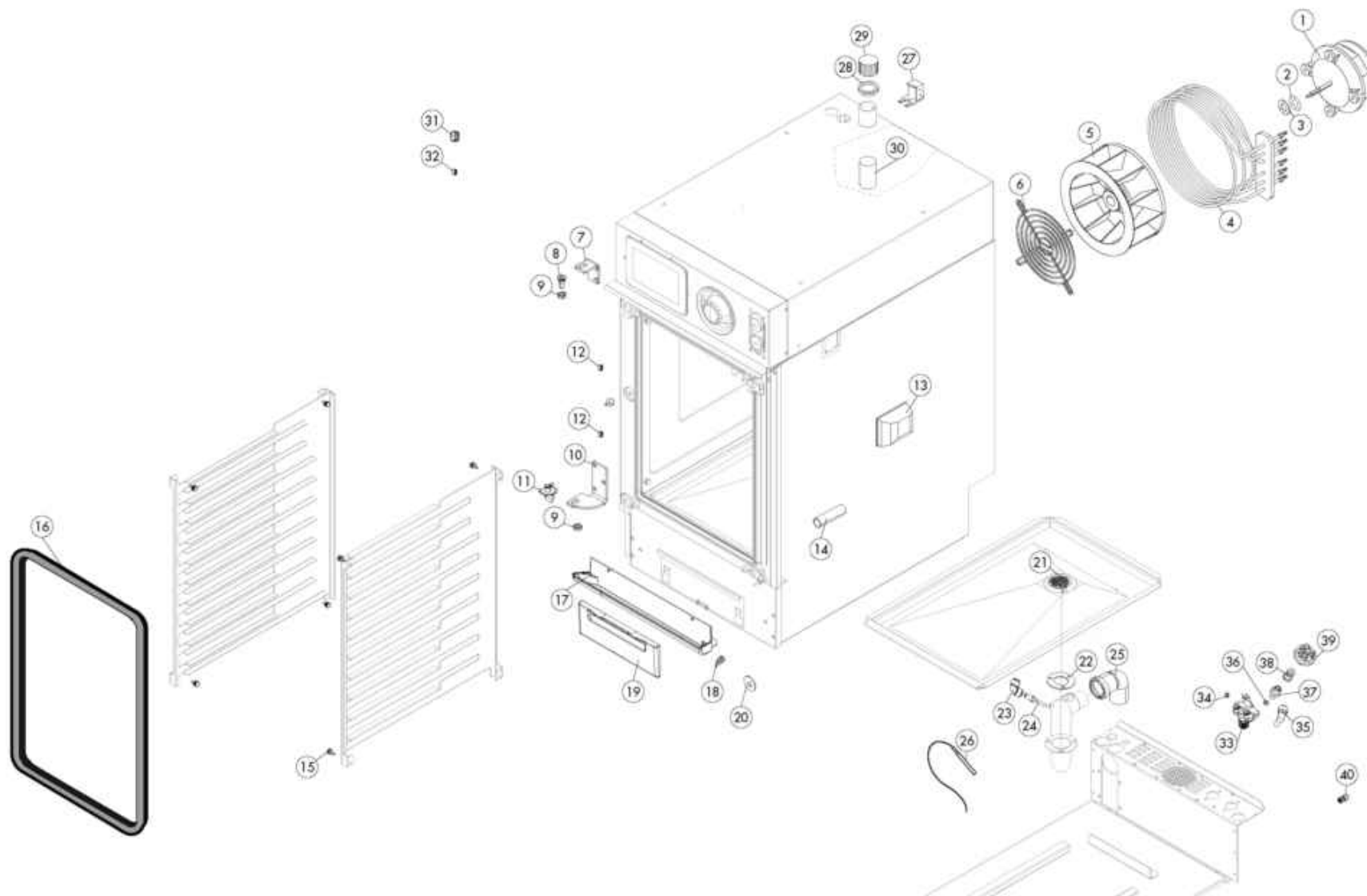


ATTENZIONE: PER TENSIONI SPECIALI, SPECIFICARE SEMPRE IL MODELLO DI FORNO ED IL NUMERO DI MATRICOLA.
ATTENTION: FOR SPECIAL VOLTAGES, PLEASE ALWAYS SPECIFY THE OVEN MODEL AND THE SERIAL NUMBER.

ATTENTION: POUR TENSIONS SPÉCIALES, MERCI DE SPÉCIFIER TOUJOURS LE MODÈLE DU FOUR ET LE NUMÉRO DE SÉRIE.
ACHTUNG: BEI SONDERSPANNUNGEN, BITTE IMMER OFEN-MODELL UND SERIENNUMMER GEBEN.

ed. 0316



TAV. A

COEN061

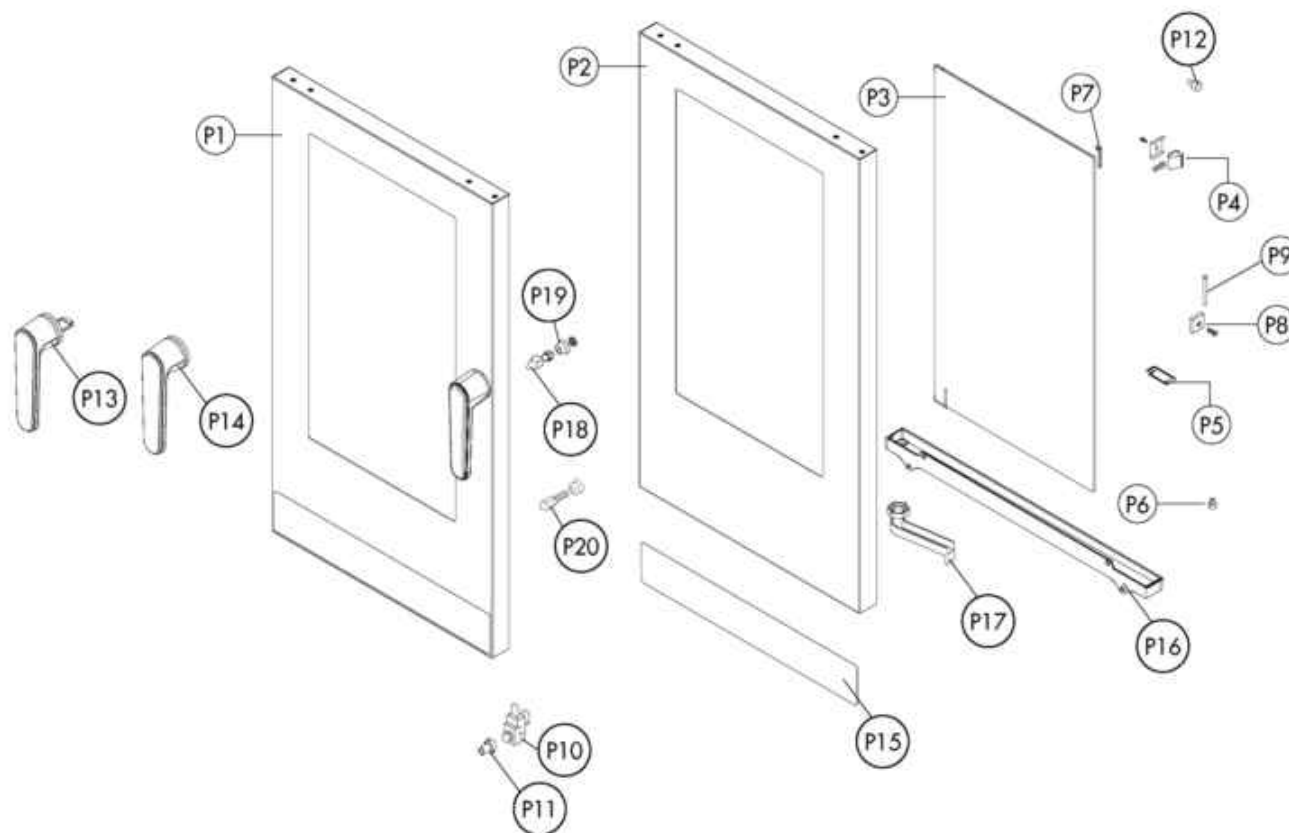
Pos.	Code	Codice precedente	Description	Notes	From:	To:
0001	LA65210100		FUSE CARRIER [C] 2X38	UL Version (USA-CAN)		
0001	LAR65041020		MOTOR [C] 230V 130W UL 1F 2V	UL Version (USA-CAN)		
0001	LAR65041040		MOTOR [C] 1F.125Win-75Wout 2 VEL			
0001	LAR65200400		FUSIBILE X MOT. KTK-R-6 600V 6A CL. CC	UL Version (USA-CAN)		
0002	LAR58005500		SEAT [C]			
0003	LA70020020	LAR70020020	GASKET [C] 8X22			
0004	LAR65011660		HEATING ELEMENT [C] 7500W230V CHAMBER			
0004	LAR65011680		RESISTENZA 7500W254V CAM. DOPPIO ANELLO	Marine Version 254V (3AC 440V)		
0004	LAR65011760		HEATING ELEMENT [C] 7500W208V	UL Version 208V (USA-CAN)		
0004	LAR65011770		RESISTENZA 7500W277V	UL Version 277V (USA-CAN 3AC 480V)		
0005	LA75400580	LAR75400580	FAN [C] D. 200X50 50HZ	50Hz		
0005	LA75400610		VENTOLA D.200X42 60HZ P.D. CEV.	60Hz		
0006	LA75300170	LAR75300170	PLATE [C] FAN D.200			
0007	LAR18424150		UPPER HINGE [C] DOOR CEV			
0008	LA58002150	LAR58002150	PIN [C]			
0009	LA58004050	LAR58004050	NUT [C] FOR HINGE PIN M/106-220			
0010	LAR18212360		ASS.CERNIERA INFERIORE COE_026/061/101			
0011	LA58002670	LAR58002670	PIN [C] HINGE SR.2005			
0012	LA69130570	LAR69130570	CAP [C] D. 8,5-14,5			
0013	LAR65270510		LAMP HOLDER [C]			
0014	LAR70060080		COUPLING [C] D. 13X18X80			
0015	LA58001850	LAR58001850	PIN [C]			
0016	LA70044892	LAR70044890	GASKET [C] DOOR CEV 061-026			
0017	LAR69180390		DRAIN CONTAINER [C] COE_026/061/101			
0018	LA69180250	LAR69180250	FILTER [C] BASIN DRAINAGE			
0019	LAR69180370		DOOR [C]			
0020	LA70010250	LAR70010250	GASKET [C] 17,17X1,78			
0021	LA10201700	LAR10201700	FILTER [C] D.76/44.5 M/106-11			
0022	LA70030170	LAR70010140	GASKET [C] 76X40,3X3			

Pos.	Code	Codice precedente	Description	Notes	From:	To:
0023	LA62090478	LAR62090478	CONNECTOR [C] D.10			
0024	LA58006160	LAR58006160	NOZZLE [C] D. 0,80			
0025	LA62280028	LAR62280028	CURVE [C] D.40 D.40X			
0026	LAR65320220		PROBE [C] K 6X80 1,5ML			
0027	LA65090300	LAR65090300	ACTUATOR [C]			
0028	LA70050130	LAR70050130	GASKET [C] D.50			
0029	LAR18422130		CAP [C] E_042-051-044			
0030	LA70060010	LAR70060010	COUPLING [C] D. 30			
0031	LAR69130580		CAP [C] D. 32			
0032	LAR69130600		CAP [C] D. 8			
0033	LAR65110340		SOLENOID VALVE [C] 230V 50/60HZ 2 WAYS 1P+1D OUT J.G. D10			
0034	LA65110500	LAR65110500	REGULATOR [C]			
0035	LA62090528	LAR62090528	CONNECTOR [C] 10X10			
0036	LAR70010050		GASKET [C] 7,60X2,62			
0037	LA62090518	LAR62090518	CONNECTOR [C] 10X1/4			
0038	LA62030113	LAR62030113	COUPLING [C] FF 1/8-1/4 BRASS			
0039	LAR63070050		PRESSURE SWITCH [C] 1/8 0,5-0,35 BAR			
0040	LAR65240200		FAIRLEAD [C] V-TEC 21			

ATTENZIONE: PER TENSIONI SPECIALI, SPECIFICARE SEMPRE IL MODELLO DI FORNO ED IL NUMERO DI MATRICOLA.
ATTENTION: FOR SPECIAL VOLTAGES, PLEASE ALWAYS SPECIFY THE OVEN MODEL AND THE SERIAL NUMBER.

ATTENTION: POUR TENSIONS SPÉCIALES, MERCI DE SPÉCIFIER TOUJOURS LE MODÈLE DU FOUR ET LE NUMÉRO DE SÉRIE.
ACHTUNG: BEI SONDERSPANNUNGEN, BITTE IMMER OFEN-MODELL UND SERIENNUMMER GEBEN.

ed. 0316



TAV. B

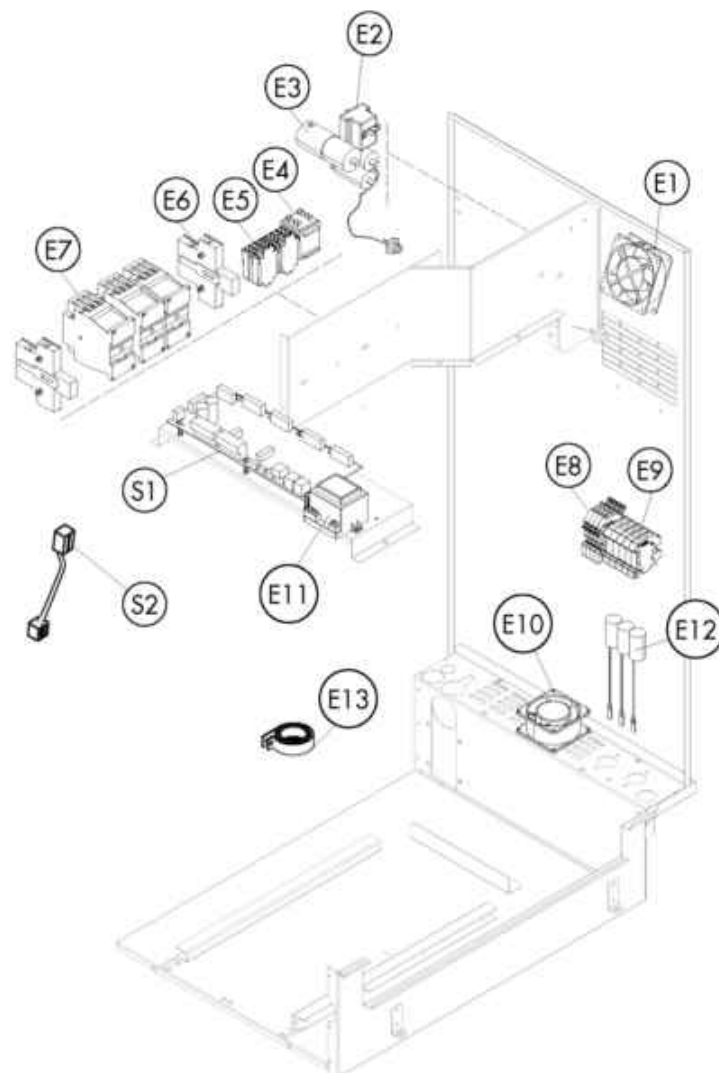
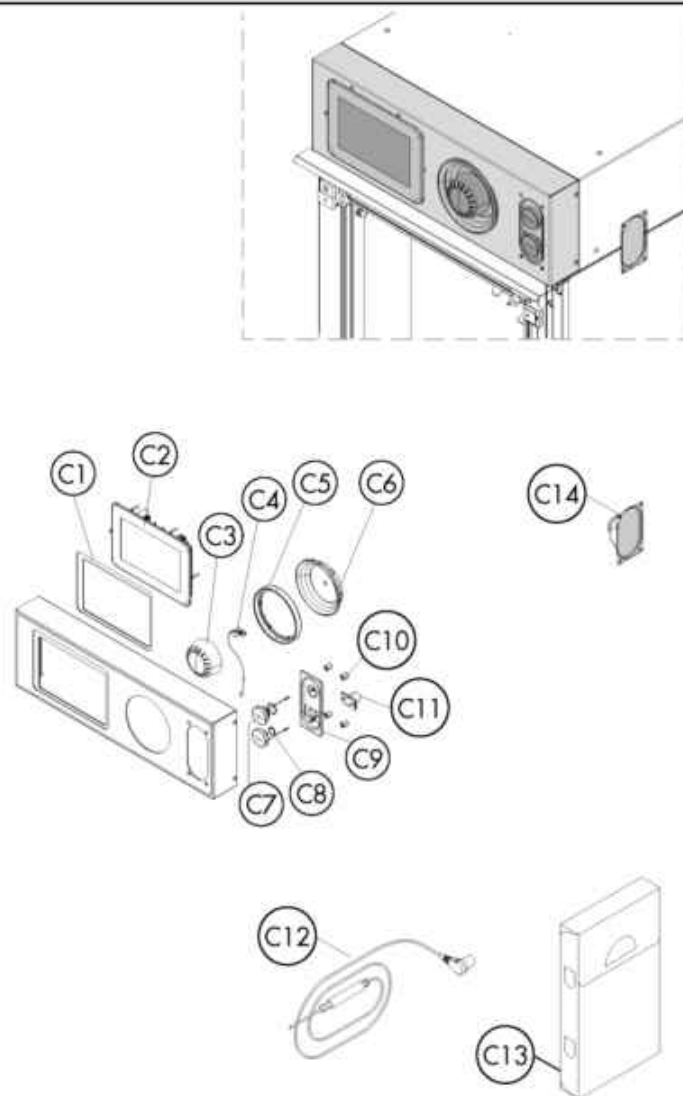
COEN061

Pos.	Code	Codice precedente	Description	Notes	From:	To:
OOP1	LAR18109070		DOOR [C] COEN026/061			
OOP2	LAR18212480		PORTA ESTERNA COEN026/061			
OOP3	LAR71200951		GLASS PLATE [C] CEV061 435X465X6			
OOP4	LAR58001780		CATCH [C] DOOR P2000			
OOP5	LA61620152	LAR61620152	SPRING [C]			
OOP7	LA11423460	LAR11423460	PROTECTION [C] DOOR GLASS K E T 2011			
OOP8	LA58001760	LAR58001760	HINGE [C] GLASS SR2000			
OOP9	LA58001770	LAR58001770	PIN [C]			
OP10	LAR65260540		MICROSWITCH [C]			
OP11	LA58001860	LAR58001860	PIN [C]			
OP12	LAR70050180	LAR70050100	SPACER [C] GLASS 15x8 M4x12 A2			
OP13	LA69010900	LAR69010900	HANDLE [C]			
OP14	LA69011000	LAR18211890	COVER [C] CLOSURE SYSTEM 6303 COMPACT			
OP15	LAR67018230		RIV.PORTA COMP.NABOO COEN026/061/101 LX			
OP16	LA69180380	LAR69180380	DOOR CONTAINER [C] COE_026/061/101			
OP17	LA69180010	LAR69180010	DRAIN [C]			
OP18	LA69010260	LAR69010260	PRONG [C]			
OP18	LAR69010270		PRONG [C]			
OP19	LA70050160	LAR70050160	GASKET [C]			

ATTENZIONE: PER TENSIONI SPECIALI, SPECIFICARE SEMPRE IL MODELLO DI FORNO ED IL NUMERO DI MATRICOLA.
ATTENTION: FOR SPECIAL VOLTAGES, PLEASE ALWAYS SPECIFY THE OVEN MODEL AND THE SERIAL NUMBER.

ATTENTION: POUR TENSIONS SPÉCIALES, MERCI DE SPÉCIFIER TOUJOURS LE MODÈLE DU FOUR ET LE NUMÉRO DE SÉRIE.
ACHTUNG: BEI SONDERSPANNUNGEN, BITTE IMMER OFEN-MODELL UND SERIENNUMMER GEBEN.

ed. 0316



TAV. C

COEN061

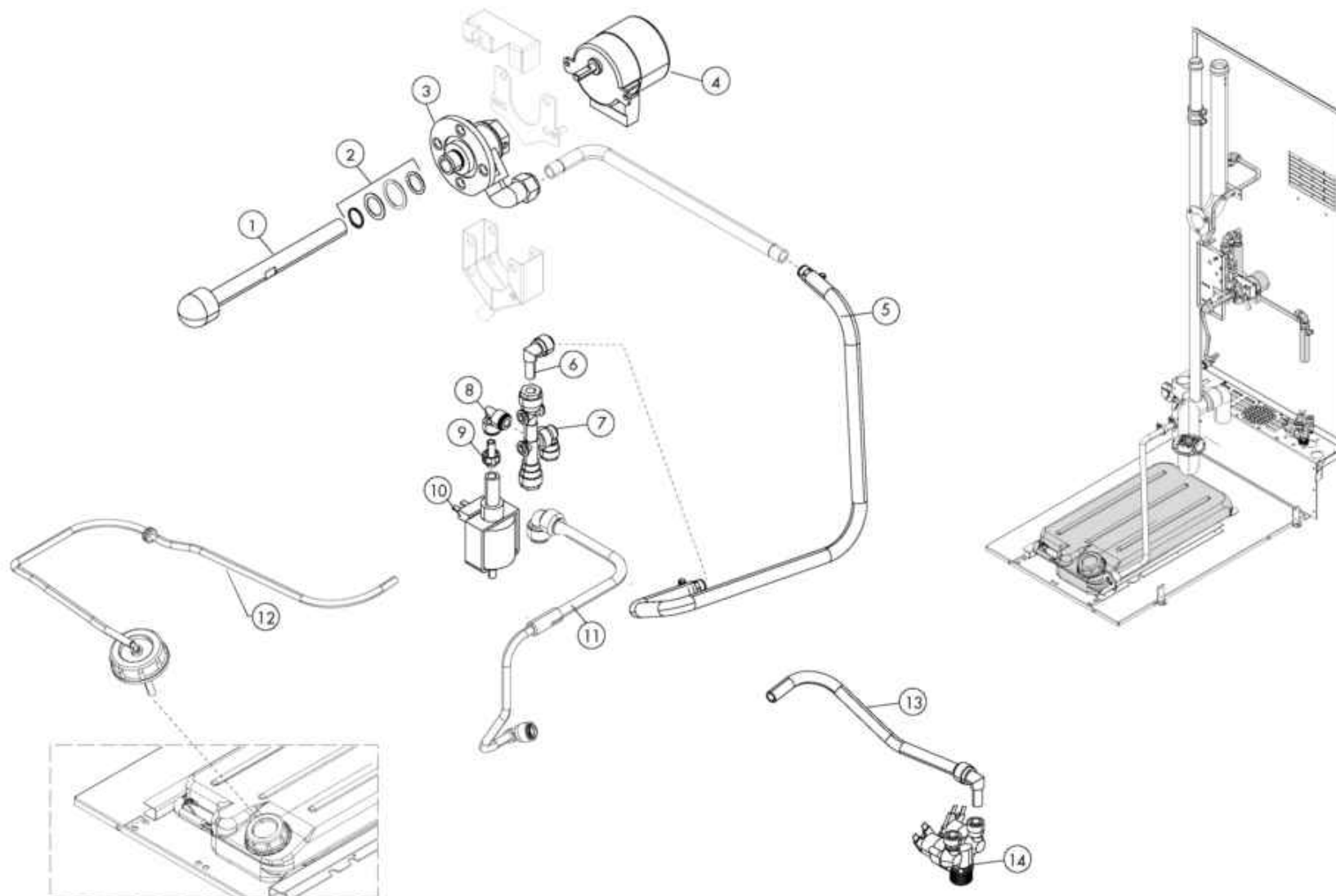
Pos.	Code	Codice precedente	Description	Notes	From:	To:
00C1	LAR70040040		GASKET [C] CONTROL PANEL T 2015			
00C2	LA65302691		SCHEDA DISPLAY NABOO7+FRAME ORIZ. SOM E			
00C3	LA69030240	LAR69030240	KNOB [C] ENCODER D.70 BLACK			
00C4	LA65302500	LAR65302500	ENCODER [C] PUSH NABOO+CABLE L=60CM			
00C5	LA69030330	LAR69030330	COUNTER FLANGE [C] D.116 FOR ENCODER N 2014			
00C6	LA69030320	LAR69030320	RING NUT [C] D. 116			
00C7	LAR65321310		CAP [C]			
00C8	LA65321330	LAR65321330	CAP [C] N/S 2014			
00C9	LA69180350	LAR69180350	PLATE [C] USB LEO/COMPACT			
00E1	LA65060050	LAR65060050	FAN [R] D. 120			
00E2	LA65070350	LAR65070350	THERMOSTAT [C] 360Å°C			
00E2	LA65070370	LAR65070370	THERMOSTAT [C] 360Å°C	UL Version (USA-CAN)		
00E3	LA65190240	LAR65190240	CONDENSER [C] 10ÅµF C/OUT 4 FASTON 6,35			
00E3	LA65190370		CONDENSER [C] 10ÅµF C/OUT 4 FASTON 6,35 UL	UL Version (USA-CAN)		
00E4	LA65170170	LAR65170170	RELAY [C]			
00E5	LA65170100	LAR65170100	RELAY [C]			
00E6	LA65140730	LAR65140730	CONTACT [C] 1L+1R DILM32-XHI11 4-7,5KW			
00E6	LA65140740	LAR65140740	CONTACT [C] 1L+1R DILM32-XHI11-S 7,5KW			
00E7	LA65140700	LAR65140700	SWITCH [C] M9-01 4KW-20A			
00E7	LA65140710	LAR65140710	SWITCH [C] M17-01 7,5KW-35A			
00E8	LA65210020	LAR65210020	FUSE CARRIER [C] 5X20			
00S1	LA65302640	LAR65302640	POWER BOARD [C] COMPACT BY NABOO			
00S2	LA65301750	LAR65301750	CABLE [C] SERIAL WITH PLUG RJ45 L=600			
OC10	LAR69180360		BLOCCAGGIO MASCHERINA LEO/ COMPACT			
OC11	LA65321110	LAR65321110	CONNECTOR [C] L350 FEMALE TO CORE PROBE 6 PINS			
OC12	LA65321102	LAR65321102	PROBE [C] K 4P 6 PIN IMP.2012			
OC13	LAR86020400		VALIGETTA X SONDA AL CUORE TRASPARENTE			

Pos.	Code	Codice precedente	Description	Notes	From:	To:
OC14	LA65330060	LAR65330060	LOUDSPEAKER [C] CONTROL PANEL NA 2014			
OE10	LA65060010	LAR65060010	FAN [C] D. 80			
OE11	LA65180430	LAR65180430	TRANSFORMER [C] 40VA			
OE11	LA65187110	LAR65187110	TRANSFORMER [C] 40VA	UL Version (USA-CAN)		
OE12	LA65280200	LAR65280200	FILTER [C] Cx=0,47Å F Cy=2X10nF			
OE13	LAR65280450		FERRITE [C] TRCN 28-16-20			

ATTENZIONE: PER TENSIONI SPECIALI, SPECIFICARE SEMPRE IL MODELLO DI FORNO ED IL NUMERO DI MATRICOLA.
ATTENTION: FOR SPECIAL VOLTAGES, PLEASE ALWAYS SPECIFY THE OVEN MODEL AND THE SERIAL NUMBER.

ATTENTION: POUR TENSIONS SPÉCIALES, MERCI DE SPÉCIFIER TOUJOURS LE MODÈLE DU FOUR ET LE NUMÉRO DE SÉRIE.
ACHTUNG: BEI SONDERSPANNUNGEN, BITTE IMMER OFEN-MODELL UND SERIENNUMMER GEBEN.

ed. 0316



TAV. B

COEN061

Pos.	Code	Codice precedente	Description	Notes	From:	To:
0001	LAR58007060		WASHING HEAD [C] L=80 (M_042)			
0002	LAR70045120		GASKET [C]			
0003	LAR58007020		FLANGE [C]			
0004	LA65090260	LAR65090260	GEARMOTOR [C]			
0006	LA62090478	LAR62090478	CONNECTOR [C] D.10			
0007	LA62090888	LAR62090888	MANIFOLD [C] 3WAYS-2D.10+1D.8+3 NO RETURN CONTROL			
0008	LA62090498	LAR62090498	CONNECTOR [C] D.8			
0009	LA62090608	LAR62090608	END SIDE PIPE [C] 8x1/8			
0010	LAR65110600		PUMP [C]			
0014	LAR65110330		DOUBLE SOLENOID VALVE 2 WAYS 230V 50/60HZ OUT J.G. D.10			