

GAMA KARE / KARE GENERATION / GÉNÉRATION KARE

LAVADORAS DE CENTRIFUGADO ALTO / HIGH SPIN WASHER EXTRACTORS / LAVE-LINGE DE ESSORAGE FORT



LA-11 TP2
LA-14 TP2
LA-18 TP2
LA-25 TP2
LA-35 TP2

SEPTIEMBRE 2019 / SEPTEMBER 2019 / SEPTEMBRE 2019

[illegible]

Los dibujos representados en este documento son orientativos y pueden no reproducir con exactitud las piezas en cuestión. Los aparatos están sujetos a modificaciones sin previo aviso. Asegúrese de consultar la última versión del despiece técnico y de pedir las piezas compatibles con su modelo según la fecha de fabricación.

IMPORTANTE: Repuestos recomendados marcados en color amarillo en las listas de repuestos que acompañan a cada una de las láminas.

The drawings shown in this document are for guidance and might not represent the parts accurately. The machinery is subject to change without prior notice. Please, ensure that this is the most recent revision of the spare parts manual, and that you are ordering suitable parts for your model considering its date of manufacture.

NOTE: The recommended spare parts are marked in yellow on the spare parts lists that come along with each drawing.

The drawings shown in this document are for guidance and might not represent the parts accurately. The machinery is subject to change without prior notice. Please, ensure that this is the most recent revision of the spare parts manual, and that you are ordering suitable parts for your model considering its date of manufacture.

PRÉAVIS: Les pièces de rechange recommandées sont indiquées en jaune sur les listes de pièces de rechange fournies avec chaque plan.

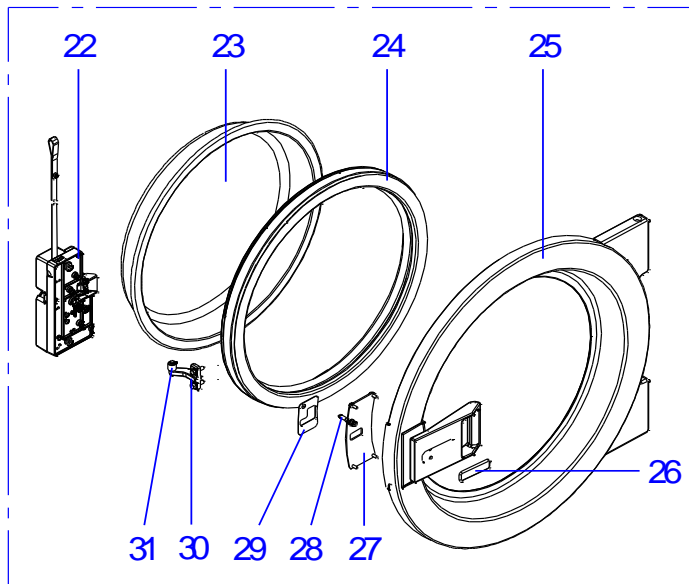


LÁMINA A / A DRAWING / PLAN A

ITEM	REF.	DENOMINACIÓN	DENOMINATION	DÉNOMINATION	LA-11 TP2	LA-14 TP2	LA-18 TP2	LA-25 TP2	LA-35 TP2		HASTA / UNTIL / JUSQU'À	DESDE / FROM / DEPUIS	OBSERVACIONES / NOTES / OBSERVATIONS
1	12216015	ENCIMERA SKINPLATE	SKINPLATE WORKTOP	COMPTOIR SKINPLATE	1	-	-	-	-				version SKINPLATE / SKINPLATE / SKINPLATE
1	12216009	ENCIMERA SKINPLATE	SKINPLATE WORKTOP	COMPTOIR SKINPLATE	-	1	-	-	-				
1	12216078	ENCIMERA SKINPLATE	SKINPLATE WORKTOP	COMPTOIR SKINPLATE	-	-	1	-	-				
1	12215859	ENCIMERA SKINPLATE	SKINPLATE WORKTOP	COMPTOIR SKINPLATE	-	-	-	1	-				
1	12215890	ENCIMERA SKINPLATE	SKINPLATE WORKTOP	COMPTOIR SKINPLATE	-	-	-	-	1				
	11003060	PERFIL GOMA APOYO CUBETERA	TRAY SUPPORT RUBBER PROFILE	PROFILÉ EN CAOUTCHOUC	0.93	0.93	0.93	0.93	0.93				metros / metres / mètres (m)
1	12120624	ENCIMERA INOX	STAINLESS WORKTOP	COMPTOIR INOXYDABLE	1	-	-	-	-				version ACERO INOXIDABLE / STAINLESS STEEL / ACIER INOXYDABLE
1	12114394	ENCIMERA INOX	STAINLESS WORKTOP	COMPTOIR INOXYDABLE	-	1	-	-	-				
1	12121305	ENCIMERA INOX	STAINLESS WORKTOP	COMPTOIR INOXYDABLE	-	-	1	-	-				
1	12125412	ENCIMERA INOX	STAINLESS WORKTOP	COMPTOIR INOXYDABLE	-	-	-	1	-				
1	12111682	ENCIMERA INOX	STAINLESS WORKTOP	COMPTOIR INOXYDABLE	-	-	-	-	1				
2	12119916	TAPA CUADRO ELÉCTRICO	ELECTRIC BOARD COVER	COUVERCLE DE TABLEAU ÉLECTR	1	-	-	-	-				
2	12119402	TAPA CUADRO ELÉCTRICO	ELECTRIC BOARD COVER	COUVERCLE DE TABLEAU ÉLECTR	-	1	1	1	1				
3	12161465	SOPORTE ELECTROVÁLVULAS	SOLENOID VALVE SUPPORT	ÉLECTROVANNE ÉQUERRE	1	-	-	-	-				
3	12165413	SOPORTE ELECTROVÁLVULAS	SOLENOID VALVE SUPPORT	ÉLECTROVANNE ÉQUERRE	-	1	-	-	-				
3	12165417	SOPORTE ELECTROVÁLVULAS	SOLENOID VALVE SUPPORT	ÉLECTROVANNE ÉQUERRE	-	-	1	-	-				
3	12165440	SOPORTE ELECTROVÁLVULAS	SOLENOID VALVE SUPPORT	ÉLECTROVANNE ÉQUERRE	-	-	-	1	-				
3	12165474	SOPORTE ELECTROVÁLVULAS	SOLENOID VALVE SUPPORT	ÉLECTROVANNE ÉQUERRE	-	-	-	-	1				
4	12160509	PANEL POSTERIOR	REAR PANEL	PANNEAU POSTÉRIEUR	1	-	-	-	-				
4	12001239	PANEL POSTERIOR	REAR PANEL	PANNEAU POSTÉRIEUR	-	1	-	-	-				
4	12001211	PANEL POSTERIOR	REAR PANEL	PANNEAU POSTÉRIEUR	-	-	1	-	-				
4	12001154	PANEL POSTERIOR	REAR PANEL	PANNEAU POSTÉRIEUR	-	-	-	1	-				
4	12111421	PANEL POSTERIOR	REAR PANEL	PANNEAU POSTÉRIEUR	-	-	-	-	1				
5	12227401	BISAGRA PORTAMANDOS IZQ	CONTROL PANEL LEFT HINGE	CHAMIÈRE TABL. DE COMMANDE	1	1	1	1	1				
5	12227404	BISAGRA PORTAMANDOS DCH	CONTROL PANEL RICHT HINGE	CHAMIÈRE TABL. DE COMMANDE	1	1	1	1	1				
6	12237941	PANEL LATERAL SKINPLATE	SKINPLATE SIDE PANEL	PANNEAU LATÉRAL SKINPLATE	2	-	-	-	-				version SKINPLATE / SKINPLATE / SKINPLATE
6	12237942	PANEL LATERAL SKINPLATE	SKINPLATE SIDE PANEL	PANNEAU LATÉRAL SKINPLATE	-	2	-	-	-				
6	12237940	PANEL LATERAL SKINPLATE	SKINPLATE SIDE PANEL	PANNEAU LATÉRAL SKINPLATE	-	-	2	-	-				
6	12237943	PANEL LATERAL SKINPLATE	SKINPLATE SIDE PANEL	PANNEAU LATÉRAL SKINPLATE	-	-	-	2	-				
6	12237944	PANEL LATERAL SKINPLATE	SKINPLATE SIDE PANEL	PANNEAU LATÉRAL SKINPLATE	-	-	-	-	2				
6	12173747	PANEL LATERAL INOX	STAINLESS SIDE PANEL	PANNEAU LATÉRAL INOXYDABLE	2	-	-	-	-				version ACERO INOXIDABLE / STAINLESS STEEL / A

LÁMINA A / A DRAWING / PLAN A

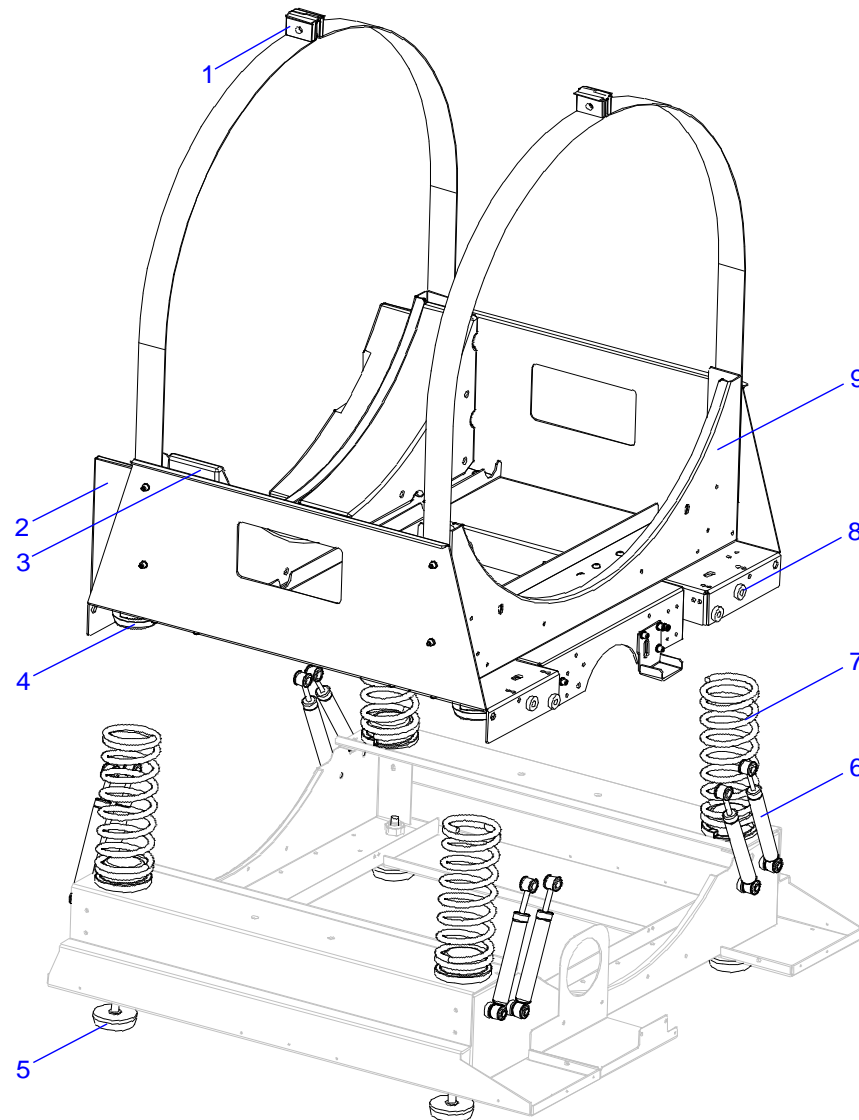
ITEM	REF.	DENOMINACIÓN	DENOMINATION	DÉNOMINATION	LA-11 TP2	LA-14 TP2	LA-18 TP2	LA-25 TP2	LA-35 TP2		HASTA / UNTIL / JUSQU'À	DESDE / FROM / DEPUIS	OBSERVACIONES / NOTES / OBSERVATIONS
6	12170054	PANEL LATERAL INOX	STAINLESS SIDE PANEL	PANNEAU LATÉRAL INOXYDABLE	-	2	-	-	-				version ACERO INOXIDABLE / STAINLESS STEEL / ACIER INOXYDABLE
6	12172067	PANEL LATERAL INOX	STAINLESS SIDE PANEL	PANNEAU LATÉRAL INOXYDABLE	-	-	2	-	-				
6	12172083	PANEL LATERAL INOX	STAINLESS SIDE PANEL	PANNEAU LATÉRAL INOXYDABLE	-	-	-	2	-				
6	12184915	PANEL LATERAL INOX	STAINLESS SIDE PANEL	PANNEAU LATÉRAL INOXYDABLE	-	-	-	-	2				
7	12008693	PITÓN CIERRE	LOCK BOLT	BEC FERMETURE	7	7	7	13	13				
8	12008460	MUELLE CIERRE	LOCK SPRING	RESSORT FERMETURE	7	7	7	7	7				
9	12120183	SEPARADOR CALZO PUERTA	DOOR PROP SPACER	SÉPARATEUR CALE PORTE	12	12	12	12	8				
9	12119926	SEPARADOR CALZO PUERTA	DOOR PROP SPACER	SÉPARATEUR CALE PORTE	-	-	-	-	6				
10	12121028	CALZO PUERTA	DOOR PROP	CALE PORTE	1	-	-	-	-				
10	12121036	CALZO PUERTA	DOOR PROP	CALE PORTE	-	1	-	-	-				
10	12121490	CALZO PUERTA	DOOR PROP	CALE PORTE	-	-	1	1	-				
10	12128227	CALZO PUERTA	DOOR PROP	CALE PORTE	-	-	-	-	1				
11	12160240	ZÓCALO SKINPLATE	SKINPLATE SKIRTING	PLINTHE SKINPLATE	1	-	-	-	-				version SKINPLATE / SKINPLATE / SKINPLATE
11	12168607	ZÓCALO SKINPLATE	SKINPLATE SKIRTING	PLINTHE SKINPLATE	-	1	-	-	-				
11	12167914	ZÓCALO SKINPLATE	SKINPLATE SKIRTING	PLINTHE SKINPLATE	-	-	1	-	-				
11	12168764	ZÓCALO SKINPLATE	SKINPLATE SKIRTING	PLINTHE SKINPLATE	-	-	-	1	-				
11	12184661	ZÓCALO SKINPLATE	SKINPLATE SKIRTING	PLINTHE SKINPLATE	-	-	-	-	1				
11	12173748	ZÓCALO INOX	STAINLESS SKIRTING	PLINTHE INOXYDABLE	1	-	-	-	-				version ACERO INOXIDABLE / STAINLESS STEEL / ACIER INOXYDABLE
11	12160777	ZÓCALO INOX	STAINLESS SKIRTING	PLINTHE INOXYDABLE	-	1	-	-	-				
11	12152614	ZÓCALO INOX	STAINLESS SKIRTING	PLINTHE INOXYDABLE	-	-	1	-	-				
11	12188648	ZÓCALO INOX	STAINLESS SKIRTING	PLINTHE INOXYDABLE	-	-	-	1	-				
11	12184916	ZÓCALO INOX	STAINLESS SKIRTING	PLINTHE INOXYDABLE	-	-	-	-	1				
12	12160182	FONDO PUERTA SKINPLATE	SKINPLATE DOOR BASE	FOND DE PORTE SKINPLATE	1	-	-	-	-				version SKINPLATE / SKINPLATE / SKINPLATE
12	12171100	FONDO PUERTA SKINPLATE	SKINPLATE DOOR BASE	FOND DE PORTE SKINPLATE	-	1	-	-	-				
12	12166575	FONDO PUERTA SKINPLATE	SKINPLATE DOOR BASE	FOND DE PORTE SKINPLATE	-	-	1	1	-				
12	12185099	FONDO PUERTA SKINPLATE	SKINPLATE DOOR BASE	FOND DE PORTE SKINPLATE	-	-	-	-	1				
12	12173744	FONDO PUERTA INOX	STAINLESS DOOR BASE	FOND DE PORTE INOXYDABLE	1	-	-	-	-				version ACERO INOXIDABLE / STAINLESS STEEL / ACIER INOXYDABLE
12	12171311	FONDO PUERTA INOX	STAINLESS DOOR BASE	FOND DE PORTE INOXYDABLE	-	1	-	-	-				
12	12140943	FONDO PUERTA INOX	STAINLESS DOOR BASE	FOND DE PORTE INOXYDABLE	-	-	1	1	-				
12	12184956	FONDO PUERTA INOX	STAINLESS DOOR BASE	FOND DE PORTE INOXYDABLE	-	-	-	-	1				
13	12227476	BISAGRA PUERTA	DOOR HINGE	CHAMÈRE DE PORTE	2	2	2	2	-				

LÁMINA A / A DRAWING / PLAN A

ITEM	REF.	DENOMINACIÓN	DENOMINATION	DÉNOMINATION	LA-11 TP2	LA-14 TP2	LA-18 TP2	LA-25 TP2	LA-35 TP2		HASTA / UNTIL / JUSQU'À	DESDE / FROM / DEPUIS	OBSERVACIONES / NOTES / OBSERVATIONS
13	12227479	BISAGRA PUERTA	DOOR HINGE	CHAMÈRE DE PORTE	-	-	-	-	2				
14	12159436	MARCO FRONTAL SKINPLATE	SKINPLATE FORNT FRAME	CADRE FRONTAL SKINPLATE	1	-	-	-	-				
14	12171218	MARCO FRONTAL SKINPLATE	SKINPLATE FORNT FRAME	CADRE FRONTAL SKINPLATE	-	1	-	-	-				
14	12166760	MARCO FRONTAL SKINPLATE	SKINPLATE FORNT FRAME	CADRE FRONTAL SKINPLATE	-	-	1	-	-				version SKINPLATE / SKINPLATE / SKINPLATE
14	12167212	MARCO FRONTAL SKINPLATE	SKINPLATE FORNT FRAME	CADRE FRONTAL SKINPLATE	-	-	-	1	-				
14	12184648	MARCO FRONTAL SKINPLATE	SKINPLATE FORNT FRAME	CADRE FRONTAL SKINPLATE	-	-	-	-	1				
14	12173746	MARCO FRONTAL INOX	STAINLESS FORNT FRAME	CADRE FRONTAL INOXYDABLE	1	-	-	-	-				
14	12171315	MARCO FRONTAL INOX	STAINLESS FORNT FRAME	CADRE FRONTAL INOXYDABLE	-	1	-	-	-				version ACERO INOXIDABLE / STAINLESS STEEL / ACIER INOXYDABLE
14	12140990	MARCO FRONTAL INOX	STAINLESS FORNT FRAME	CADRE FRONTAL INOXYDABLE	-	-	1	-	-				
14	12152050	MARCO FRONTAL INOX	STAINLESS FORNT FRAME	CADRE FRONTAL INOXYDABLE	-	-	-	1	-				
14	12216922	MARCO FRONTAL INOX	STAINLESS FORNT FRAME	CADRE FRONTAL INOXYDABLE	-	-	-	-	1				
	11000161	PERFIL EMBELLECEDOR A1 104/2	A1 104/2 PROFILE	PROFILÉ A1 104/2	2	2.5	2.5	2.5	3				metros / metres / mètres (m)
15	12166894	ADHESIVO DISPLAY TP2 FAGOR	FAGOR TP2 DISPLAY STICKER	ADHÉSIF DISPLAY TP2 FAGOR	1	1	1	1	1				
16	12119954	TAPON USB	USB CAP	BOUCHON USB	1	1	1	1	1				
17	12126497	ADHESIVO ON/OFF NEGRO	BLACK ON/OFF STICKER	ADHÉSIF ON/OFF NOIRE	1	1	1	1	1				version PULSADOR EMERGENCIA / EMERGENCY BUTTON / BOUTON D'URGENCE
18	12120271	TAPA MONEDERO COMPLETA	COIN SLOT COVER	COUVERCLE PORTE-MOONNAIE	1	1	1	1	1				
19	12170411	PORTAMANDOS SKINPLATE	SKINPLATE CONTROL PANEL	TABEAU DE COMMANDE SKINPL/	1	-	-	-	-				
19	12170410	PORTAMANDOS SKINPLATE	SKINPLATE CONTROL PANEL	TABEAU DE COMMANDE SKINPL/	-	1	-	-	-				
19	12170407	PORTAMANDOS SKINPLATE	SKINPLATE CONTROL PANEL	TABEAU DE COMMANDE SKINPL/	-	-	1	-	-				version SKINPLATE / SKINPLATE / SKINPLATE
19	12185643	PORTAMANDOS SKINPLATE	SKINPLATE CONTROL PANEL	TABEAU DE COMMANDE SKINPL/	-	-	-	1	-				
19	12187479	PORTAMANDOS SKINPLATE	SKINPLATE CONTROL PANEL	TABEAU DE COMMANDE SKINPL/	-	-	-	-	1				
19	12173745	PORTAMANDOS INOX	STAINLESS CONTROL PANEL	TABEAU DE COMMANDE INOXYD	1	-	-	-	-				
19	12171345	PORTAMANDOS INOX	STAINLESS CONTROL PANEL	TABEAU DE COMMANDE INOXYD	-	1	-	-	-				version ACERO INOXIDABLE / STAINLESS STEEL / ACIER INOXYDABLE
19	12171676	PORTAMANDOS INOX	STAINLESS CONTROL PANEL	TABEAU DE COMMANDE INOXYD	-	-	1	-	-				
19	12212058	PORTAMANDOS INOX	STAINLESS CONTROL PANEL	TABEAU DE COMMANDE INOXYD	-	-	-	1	-				
19	12184914	PORTAMANDOS INOX	STAINLESS CONTROL PANEL	TABEAU DE COMMANDE INOXYD	-	-	-	-	1				
20	12167166	CANTONERA ENCIMERA LAVADO	WORKTOP CORNER PIECE	CANTONNIÈRE COMPTOIR	2	2	2	2	2				
21	12094428	CERRADURA 0330	0330 LOCK	SERRURE 0330	2	2	2	2	2				
22	12140743	CIERRE COMPLETO UL 205V	UL 205V LOCK	SERRURE UL 205V	1	1	1	1	1				
23	12024758	MIRILLA PUERTA	DOOR GLASS	VERRE DE PORTE	1	1	-	-	-				
23	12141205	MIRILLA PUERTA	DOOR GLASS	VERRE DE PORTE	-	-	1	1	-				

LÁMINA A / A DRAWING / PLAN A

[illegible]



B

ARMAZÓN / FRAME / ARMATURE

6

LÁMINA B / B DRAWING / PLAN B

[illegible]

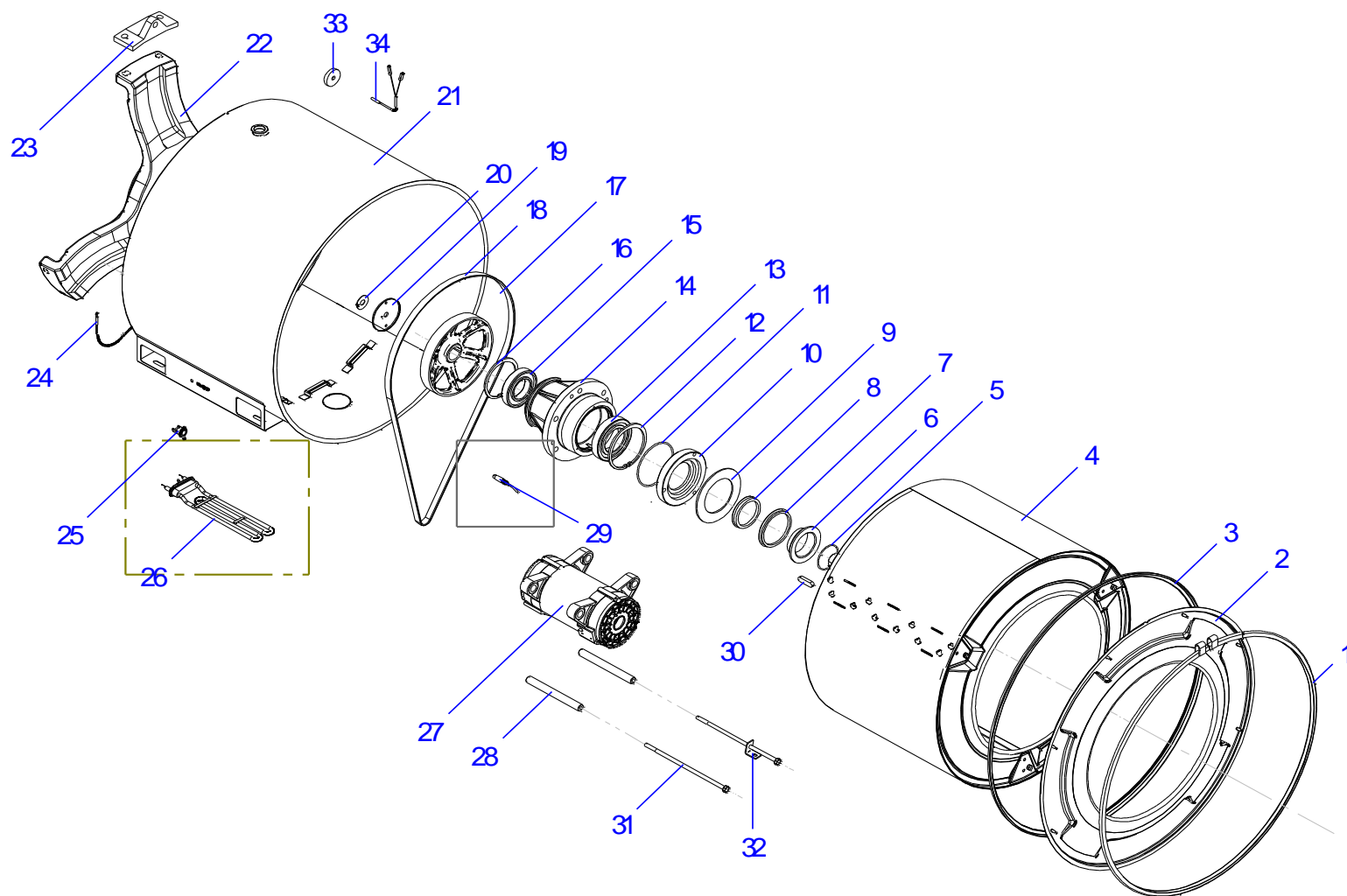


LÁMINA C / C DRAWING / PLAN C

ITEM	REF.	DENOMINACIÓN	DENOMINATION	DÉNOMINATION	LA-11 TP2	LA-14 TP2	LA-18 TP2	LA-25 TP2	LA-35 TP2		HASTA / UNTIL / JUSQU'À	DESDE / FROM / DEPUIS	OBSERVACIONES / NOTES / OBSERVATIONS
1	12022642	CIERRE CUBA	TUB ENCLOSURE	SERRURE CUVE	1	-	-	-	-				
1	12023103	CIERRE CUBA	TUB ENCLOSURE	SERRURE CUVE	-	1	-	-	-				
1	12023108	CIERRE CUBA	TUB ENCLOSURE	SERRURE CUVE	-	-	1	-	-				
1	12023105	CIERRE CUBA	TUB ENCLOSURE	SERRURE CUVE	-	-	-	1	-				
1	12049772	CIERRE CUBA	TUB ENCLOSURE	SERRURE CUVE	-	-	-	-	1				
2	12184829	FRENTE CUBA	TUB FRONT	FRONT CUVE	1	1	-	-	-				
2	12140987	FRENTE CUBA	TUB FRONT	FRONT CUVE	-	-	1	-	-				
2	12152012	FRENTE CUBA	TUB FRONT	FRONT CUVE	-	-	-	1	-				
2	12188300	FRENTE CUBA	TUB FRONT	FRONT CUVE	-	-	-	-	1				
3	12023272	JUNTA CUBA	TUB SEAL	JOINT CUVE	1	-	-	-	-				
3	12023268	JUNTA CUBA	TUB SEAL	JOINT CUVE	-	1	-	-	-				
3	12023260	JUNTA CUBA	TUB SEAL	JOINT CUVE	-	-	1	-	-				
3	12023255	JUNTA CUBA	TUB SEAL	JOINT CUVE	-	-	-	1	-				
3	12049084	JUNTA CUBA	TUB SEAL	JOINT CUVE	-	-	-	-	1				
4	12159414	TAMBOR	DRUM	TAMBOUR	1	-	-	-	-				
4	12004087	TAMBOR	DRUM	TAMBOUR	-	1	-	-	-				
4	12152600	TAMBOR	DRUM	TAMBOUR	-	-	1	-	-				
4	12168627	TAMBOR	DRUM	TAMBOUR	-	-	-	1	-				
4	12097273	TAMBOR	DRUM	TAMBOUR	-	-	-	-	1				
5	12010078	JUNTA TOR 55x3	55x3 O-RING	JOINT TOR 55x3	1	-	-	-	-				
5	12010067	JUNTA TOR 60x3	60x3 O-RING	JOINT TOR 60x3	-	1	-	-	-				
5	12010054	JUNTA TOR.69x3	69x3 O-RING	JOINT TOR 69x3	-	-	1	-	-				
5	12010019	JUNTA TOR.82x3	82x3 O-RING	JOINT TOR 82x3	-	-	-	1	1				
6	12007773	CASQUILLO EJE	AXIS BUSHING	BAGUE AXE	1	-	-	-	-				
6	12023262	CASQUILLO EJE	AXIS BUSHING	BAGUE AXE	-	1	-	-	-				
6	12023256	CASQUILLO EJE	AXIS BUSHING	BAGUE AXE	-	-	1	-	-				
6	12007749	CASQUILLO EJE	AXIS BUSHING	BAGUE AXE	-	-	-	1	-				
6	12097355	CASQUILLO EJE	AXIS BUSHING	BAGUE AXE	-	-	-	-	1				
7	12025038	RETEN V-RING VA-80 VITON	V-RING RETAINER VA-80 VITON	BAGUE V-RING VA-80 VITON	1	-	-	-	-				
7	12024987	RETEN V-RING VA-85 VITON	V-RING RETAINER VA-85 VITON	BAGUE V-RING VA-85 VITON	-	1	-	-	-				
7	12024988	RETEN V-RING VA-95 VITON	V-RING RETAINER VA-95 VITON	BAGUE V-RING VA-95 VITON	-	-	1	-	-				

LÁMINA C / C DRAWING / PLAN C

ITEM	REF.	DENOMINACIÓN	DENOMINATION	DÉNOMINATION	LA-11 TP2	LA-14 TP2	LA-18 TP2	LA-25 TP2	LA-35 TP2		HASTA / UNTIL / JUSQU'À	DESDE / FROM / DEPUIS	OBSERVACIONES / NOTES / OBSERVATIONS
7	12024993	RETEN V-RING VA-100 VITON	V-RING RETAINER VA-100 VITON	BAGUE V-RING VA-100 VITON	-	-	-	1	-				
7	12046264	RETEN VA-110 VITON	RETAINER VA-110 VITON	BAGUE VA-110 VITON	-	-	-	-	1				
8	12025226	RETEN V-RING 65 NBR	V-RING RETAINER 65 NBR	BAGUE V-RING 65 NBR	1	-	-	-	-				
8	12025221	RETEN V-RING VA-70 NBR	V-RING RETAINER VA-70 NBR	BAGUE V-RING VA-70 NBR	-	1	-	-	-				
8	12025038	RETEN V-RING VA-80 VITON	V-RING RETAINER VA-80 VITON	BAGUE VA-80 VITON	-	-	1	-	-				
8	12024992	RETEN V-RING VA 90	V-RING RETAINER VA 90	BAGUE V-RING VA 90	-	-	-	1	-				
8	12024993	RETEN V-RING VA-100 VITON	V-RING RETAINER VA-100 VITON	BAGUE V-RING VA-100 VITON	-	-	-	-	1				
9	12025098	JUNTA CASQUILLO RETENES	COUNTERSEAL BUSHING SEAL	BAGUE JOINT	1	1	-	-	-				
9	12047932	JUNTA CASQUILLO RETENES	FLAT LIP SEAL SHEET	BAGUE JOINT	-	-	1	-	-				
9	12047136	JUNTA CASQUILLO RETENES	FLAT LIP SEAL SHEET	BAGUE JOINT	-	-	-	1	-				
9	12047934	JUNTA CASQUILLO RETENES	FLAT LIP SEAL SHEET	BAGUE JOINT	-	-	-	-	1				
10	12023238	CASQUILLO CONTRARETEN	COUNTERSEAL BUSHING	CONTREBAGUE	1	-	-	-	-				
10	12023224	CASQUILLO CONTRARETEN	COUNTERSEAL BUSHING	CONTREBAGUE	-	1	-	-	-				
10	12023213	CASQUILLO CONTRARETEN	COUNTERSEAL BUSHING	CONTREBAGUE	-	-	1	-	-				
10	12023205	CASQUILLO CONTRARETEN	COUNTERSEAL BUSHING	CONTREBAGUE	-	-	-	1	-				
10	12097308	CASQUILLO CONTRARETEN	COUNTERSEAL BUSHING	CONTREBAGUE	-	-	-	-	1				
11	12009980	JUNTA TORICA 102x3	102x3 O-RING	JOINT TOR 102x3	1	-	-	-	-				
11	12009940	JUNTA TORICA 114x3	114x3 O-RING	JOINT TOR 114x3	-	1	-	-	-				
11	12009926	JUNTA TORICA 128x3	128x3 O-RING	JOINT TOR 128x3	-	-	1	-	-				
11	12010168	JUNTA TORICA 150x3	150x3 O-RING	JOINT TOR 150x3	-	-	-	1	-				
11	12025230	JUNTA TORICA 200x3	200x3 O-RING	JOINT TOR 200x3	-	-	-	-	1				
12	12024621	ANILLO SEGURIDAD 100 DIN 472	LOCKING RING 100 DIN 472	BAGUE DE SÉCURITÉ 100 DIN 472	1	-	-	-	-				
12	12009802	ANILLO SEGURIDAD J110X4 DIN47	LOCKING RING J110X4 DIN472	BAGUE DE SÉCURITÉ J110X4 DIN4	-	1	-	-	-				
12	12024901	ANILLO SEGURIDAD 125 DIN 472	LOCKING RING 125 DIN 472	BAGUE DE SÉCURITÉ 125 DIN 472	-	-	1	-	-				
12	12049333	ANILLO SEG. 140x4 DIN 472	LOCKING RING 140x4 DIN 472	BAGUE DE SÉCURITÉ 140x4 DIN 47	-	-	-	1	-				
12	12124798	ANILLO SEG. 190 DIN472-I	LOCKING RING 190 DIN-472	BAGUE DE SÉCURITÉ INT 190 DIN-	-	-	-	-	1				
13	12024842	RODAMIENTO 6211-2RS1C3	BEARING 6211-2RS1C3	ROULEMENT 6211-2RS1C3	1	-	-	-	-				
13	12023485	RODAMIENTO 6212-2RS1	BEARING 6212-2RS1	ROULEMENT 6212-2RS1	-	1	-	-	-				
13	12023445	RODAMIENTO 6214-2RS1	BEARING 6214-2RS1	ROULEMENT 6214-2RS1	-	-	1	-	-				
13	12023411	RODAMIENTO 6216-2RS1	BEARING 6216-2RS1	ROULEMENT 6216-2RS1	-	-	-	1	-				
13	12097295	RODAMIENTO 6318 DDU	BEARING 6318 DDU	ROULEMENT 6318 DDU	-	-	-	-	1				

LÁMINA C / C DRAWING / PLAN C

ITEM	REF.	DENOMINACIÓN	DENOMINATION	DÉNOMINATION	LA-11 TP2	LA-14 TP2	LA-18 TP2	LA-25 TP2	LA-35 TP2		HASTA / UNTIL / JUSQU'À	DESDE / FROM / DEPUIS	OBSERVACIONES / NOTES / OBSERVATIONS
14	12095450	SOP RODAMIENTOS MECANIZADC	MECHANIZED BEARING SUPPORT	SUPPORT DE ROUEMENTS	1	-	-	-	-				
14	12095451	SOP RODAMIENTOS MECANIZADC	MECHANIZED BEARING SUPPORT	SUPPORT DE ROUEMENTS	-	1	-	-	-				
14	12095452	SOP RODAMIENTOS MECANIZADC	MECHANIZED BEARING SUPPORT	SUPPORT DE ROUEMENTS	-	-	1	-	-				
14	12095453	SOP RODAMIENTOS MECANIZADC	MECHANIZED BEARING SUPPORT	SUPPORT DE ROUEMENTS	-	-	-	1	-				
14	12096461	SOP RODAMIENTOS MECANIZADC	MECHANIZED BEARING SUPPORT	SUPPORT DE ROUEMENTS	-	-	-	-	1				
	12010114	ARAND. SEG. 13 DIN 463	SAFETY WASHER 13 DIN 463	RONDELLE DE BLOCAGE 13 DIN 463	6	6	-	-	-				
	12010075	ARAND. SEG. 15 DIN 463	SAFETY WASHER 15 DIN 463	RONDELLE DE BLOCAGE 15 DIN 463	-	-	6	-	-				
	12010072	ARAND. SEG. 16 DIN 463	SAFETY WASHER 16 DIN 463	RONDELLE DE BLOCAGE 16 DIN 463	-	-	-	10	10				
	12009880	TORNILLO M12X40MM DIN933	SCREW M12X40MM DIN933	VIS M12X40MM DIN933	6	-	-	-	-				
	12009902	TORNILLO M12X55MM DIN931	SCREW M12X55MM DIN931	VIS M12X55MM DIN931	-	6	-	-	-				
	12009931	TORNILLO M14X70MM DIN931	SCREW M14X70MM DIN931	VIS M14X70MM DIN931	-	-	6	10	-				
	12009917	TORNILLO M16X80MM DIN931	SCREW M16X80MM DIN931	VIS M16X80MM DIN931	-	-	-	-	10				version SLUICE / SLUICE / SLUICE
15	12024905	RODAMIENTO 6209-2ZC3	BEARING 6209-2ZC3	ROUEMENT 6209-2ZC3	1	-	-	-	-				
15	12024886	RODAMIENTO 6210 DDU C3	BEARING 6210 DDU C3	ROUEMENT 6210 DDU C3	-	1	-	-	-				
15	12023485	RODAMIENTO 6212-2RS1	BEARING 6212-2RS1	ROUEMENT 6212-2RS1	-	-	1	-	-				
15	12023428	RODAMIENTO 6212-2Z	BEARING 6212-2Z	ROUEMENT 6212-2Z	-	-	-	1	-				
15	12097296	RODAMIENTO 6316 ZZ	BEARING 6316 ZZ	ROUEMENT 6316 ZZ	-	-	-	-	1				
16	12009847	ANILLO SEG. INT. 85 DIN 472	LOCKING RING 85 DIN 472	BAGUE DE SÉCURITÉ 85 DIN 472	1	-	-	-	-				
16	12009858	ANILLO SEGURIDAD 90 DIN 472	LOCKING RING 90 DIN 472	BAGUE DE SÉCURITÉ 90 DIN 472	-	1	-	-	-				version E / E / E
16	12009802	ANILLO SEGURIDAD J110X4 DIN 472	LOCKING RING J110X4 DIN 472	BAGUE DE SÉCURITÉ J110X4 DIN 472	-	-	1	-	-				
16	12009798	ANILLO SEG. 130 DIN-472	LOCKING RING 130 DIN-472	BAGUE DE SÉCURITÉ 130 DIN-472	-	-	-	1	-				
16	12124794	ANILLO SEG. 170 DIN472-I	LOCKING 170 DIN472-I	BAGUE DE SÉCURITÉ 170 DIN472-I	-	-	-	-	1				
17	12023279	POLEA TAMBOR	DRUM PULLEY	POULIE TAMBOUR	1	1	-	-	-				
17	12024919	POLEA TAMBOR	DRUM PULLEY	POULIE TAMBOUR	-	-	1	-	-				
17	12023249	POLEA TAMBOR	DRUM PULLEY	POULIE TAMBOUR	-	-	-	1	-				
17	12097389	POLEA TAMBOR	DRUM PULLEY	POULIE TAMBOUR	-	-	-	-	1				
18	12023273	CORREA 8	BELT 8	COURROIE 8	1	-	-	-	-				
18	12023269	CORREA LF-13	BELT POLY-LF-13	COURROIE LF-13	-	1	-	-	-				
18	12023267	CORREA LF-18	BELT LF-18	COURROIE LF-18	-	-	1	-	-				
18	12023252	CORREA PJ 1854	BELT PJ 1854	COURROIE PJ 1854	-	-	-	1	-				
18	12153177	CORREA POLY-V 12PJ1956	BELT POLY-V PK 2680	COURROIE POLY V PK 2680	-	-	-	-	1				

LÁMINA C / C DRAWING / PLAN C

ITEM	REF.	DENOMINACIÓN	DENOMINATION	DÉNOMINATION	LA-11 TP2	LA-14 TP2	LA-18 TP2	LA-25 TP2	LA-35 TP2		HASTA / UNTIL / JUSQU'À	DESDE / FROM / DEPUIS	OBSERVACIONES / NOTES / OBSERVATIONS
19	12021847	ARANDELA POLEA TAMBOR	DRUM PULLEY WASHER	RONDELLE POULIE TAMBOUR	1	-	-	-	-				
19	12021832	ARANDELA POLEA TAMBOR	DRUM PULLEY WASHER	RONDELLE POULIE TAMBOUR	-	1	1	1	-				
19	12114004	ARANDELA POLEA TAMBOR	DRUM PULLEY WASHER	RONDELLE POULIE TAMBOUR	-	-	-	-	1				
20	12009896	ARANDELA SEGURIDAD	LOCKING RING	RONDELLE DE BLOCAGE	1	1	1	1	1				
21	12188193	CUBA COMPLETA	COMPLETE TUB	COMPLÈTE CUVE	1	-	-	-	-				
21	12184815	CUBA COMPLETA	COMPLETE TUB	COMPLÈTE CUVE	-	1	-	-	-				
21	12170444	CUBA COMPLETA	COMPLETE TUB	COMPLÈTE CUVE	-	-	1	-	-				
21	12170449	CUBA COMPLETA	COMPLETE TUB	COMPLÈTE CUVE	-	-	-	1	-				
21	12187515	CUBA COMPLETA	COMPLETE TUB	COMPLÈTE CUVE	-	-	-	-	1				
22	12023200	REFUERZO FONDO CUBA	TUB BASE REINFORCEMENT	RENFORCEMENT FOND CUVE	1	-	-	-	-				
22	12023193	REFUERZO FONDO CUBA	TUB BASE REINFORCEMENT	RENFORCEMENT FOND CUVE	-	1	-	-	-				
22	12023188	REFUERZO FONDO CUBA	TUB BASE REINFORCEMENT	RENFORCEMENT FOND CUVE	-	-	1	-	-				
22	12023187	REFUERZO FONDO CUBA	TUB BASE REINFORCEMENT	RENFORCEMENT FOND CUVE	-	-	-	1	-				
22	12046408	REFUERZO FONDO CUBA	TUB BASE REINFORCEMENT	RENFORCEMENT FOND CUVE	-	-	-	-	1				
	12009868	ARANDELA PLANA 6 mm DIN125	FLAT WASHER 6 mm DIN125	RONDELLE 6 mm DIN125	3	3	3	5	5				
	12010106	TORNILLO DIN 912 M6x35	SCREW DIN 912 M6x35	VIS DIN 912 M6x35	3	3	3	5	5				
23	12023348	APOYO TORNILLOS 8	SCREW SUPPORT 8	APPUI VIS 8	3	-	-	-	-				
23	12023329	APOYO TORNILLOS 13	SCREW SUPPORT 13	APPUI VIS 13	-	3	-	-	-				
23	12023317	APOYO TORNILLOS 18	SCREW SUPPORT 18	APPUI VIS 18	-	-	3	-	-				
23	12023327	APOYO TORNILLOS 25	SCREW SUPPORT 25	APPUI VIS 25	-	-	-	3	-				
23	12097420	APOYO TORNILLOS 35	SCREW SUPPORT 35	APPUI VIS 35	-	-	-	-	3				
	12009902	TORNILLO HEX. M12X55MM DIN93	SCREW M12X55MM DIN931	VIS M12X55MM DIN931	6	-	-	-	-				
	12009887	TORNILLO HEX. M14X50MM DIN93	SCREW M14X50MM DIN931	VIS M14X50MM DIN931	-	6	-	-	-				
	12009814	TORNILLO HEX. M14X70MM DIN93	SCREW M14X70MM DIN933	VIS M14X70MM DIN933	-	-	6	10	-				
	12009917	TORNILLO HEX. M16X80MM DIN93	SCREW M16X80MM DIN933	VIS M16X80MM DIN933	-	-	-	-	10				
	12010089	TC AUTOBLOC. FE ZN M14 DIN985 NUT FE ZN M14 DIN985		ÉCROU FE ZN M14 DIN985	6	6	6	6	-				
	12010061	TC AUTOBLOC. FE ZN M16 DIN985 NUT FE ZN M16 DIN985		ÉCROU FE ZN M16 DIN985	-	-	-	-	6				
24	12025036	CONJUNTO Sonda 64KOhmio NTC	PROBE 64KOhm NTC	SONDE 64KOhmio NTC	1	1	1	1	1				
25	12096597	TERMOSTATO DE SEGURIDAD	SAFETY THERMOSTAT	THERMOSTAT DE SÉCURITÉ	1	1	1	1	1				
26	12096226	RESISTENCIA 2000W 264MM	RESISTANCE 2000W 264MM	RÉSISTANCE 2000W 264MM	3	-	-	-	-				
26	12096023	RESISTENCIA 3000W 277MM	RESISTANCE 3000W 277MM	RÉSISTANCE 3000W 277MM	-	3	-	-	-				version E / E / E

LÁMINA C / C DRAWING / PLAN C

[illegible]

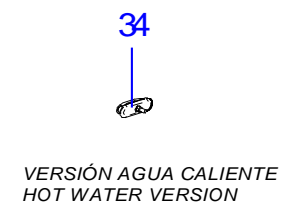
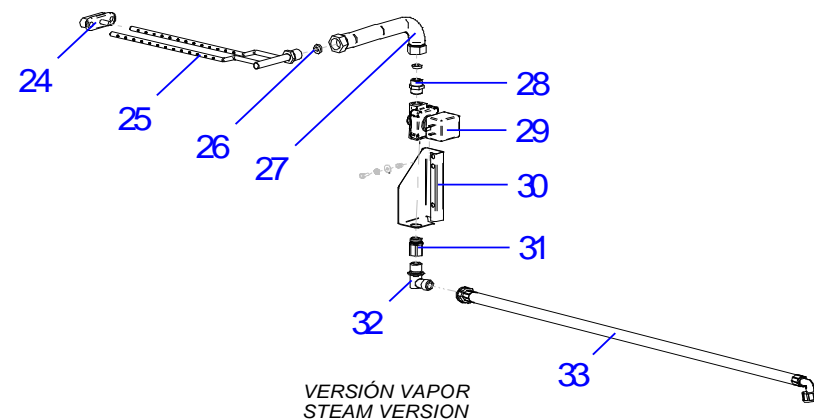
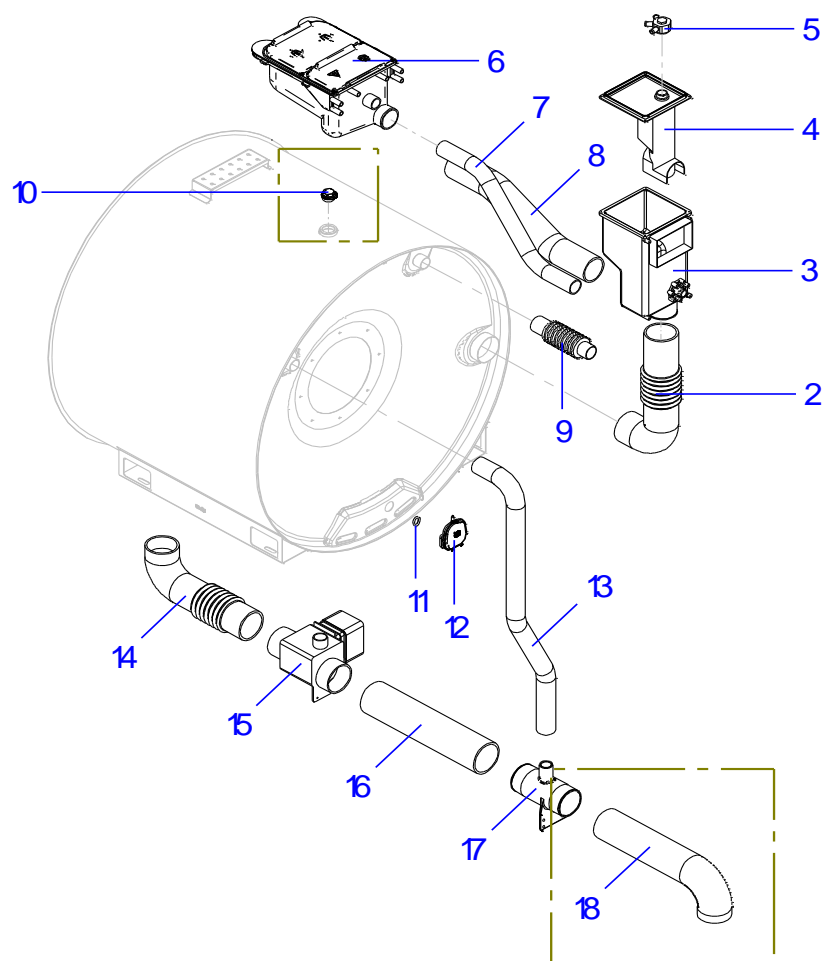


LÁMINA D / D DRAWING / PLAN D

ITEM	REF.	DENOMINACIÓN	DENOMINATION	DÉNOMINATION	LA-11 TP2	LA-14 TP2	LA-18 TP2	LA-25 TP2	LA-35 TP2		HASTA / UNTIL / JUSQU'À	DESDE / FROM / DEPUIS	OBSERVACIONES / NOTES / OBSERVATIONS
1	12024115	MANGUERA ENTRADA AGUA	WATER INLET HOSE	FLEXIBLE D'ENTRÉE	3	3	3	3	3				
2	12023263	CONDUCTO DOSIFICADOR CUBA	DISPENSER TO TUB PIPE	CONDUIT DOSEUR CUVE	1	-	-	-	1				
2	12025016	CONDUCTO DOSIFICADOR CUBA	DISPENSER TO TUB PIPE	CONDUIT DOSEUR CUVE	-	1	-	-	-				
2	12025017	CONDUCTO DOSIFICADOR CUBA	DISPENSER TO TUB PIPE	CONDUIT DOSEUR CUVE	-	-	1	1	2				
3	12130844	CUERPO COLECTOR WRAS	WRAS COLLECTOR BOX BODY	CORPS COLLECTEUR WRAS	1	1	1	1	1				
4	12130861	TAPA COLECTOR WRAS	WRAS COLLECTOR BOX LID	COUVERCLE COLLECTEUR WRAS	1	1	1	1	1				
5	12130902	ENTRADA COLECTOR WRAS	WRAS COLLECTOR BOX INLET	ENTRÉE COLLECTEUR WRAS	1	1	1	1	-				
5	12130892	ENTRADA COLECTOR WRAS	WRAS COLLECTOR BOX INLET	ENTRÉE COLLECTEUR WRAS	-	-	-	-	1				
6	12007752	CUBETA DE DETERGENTES	SOAP TRAY	CUBET DETERGENT	1	1	1	1	1				
7	12091758	CONDUCTO REBOSADERO CUBET TRAY OVERFLOW PIPE		CONDUIT DÉVERSOIR COLLECTE	1	-	-	-	-				
7	12007856	CONDUCTO REBOSADERO CUBET TRAY OVERFLOW PIPE		CONDUIT DÉVERSOIR COLLECTE	-	1	-	-	-				
7	12007839	CONDUCTO REBOSADERO CUBET TRAY OVERFLOW PIPE		CONDUIT DÉVERSOIR COLLECTE	-	-	1	-	-				
7	12007825	CONDUCTO REBOSADERO CUBET TRAY OVERFLOW PIPE		CONDUIT DÉVERSOIR COLLECTE	-	-	-	1	-				
7	12007811	CONDUCTO REBOSADERO CUBET TRAY OVERFLOW PIPE		CONDUIT DÉVERSOIR COLLECTE	-	-	-	-	1				
8	12007772	CONDUCTO CUBETERA	TRAY PIPE	CONDUIT COLLECTEUR	1	1	-	-	-				
8	12007776	CONDUCTO CUBETERA	TRAY PIPE	CONDUIT COLLECTEUR	-	-	1	-	-				
9	12007763	CONDUCTO CUBETERA	TRAY PIPE	CONDUIT COLLECTEUR	-	-	-	1	-				
9	12007756	CONDUCTO CUBETERA	TRAY PIPE	CONDUIT COLLECTEUR	-	-	-	-	1				
10	12023308	CONDUCTO SALIDA VAPOR	STEAM OUTLET HOSE	CONDUIT SORTIE DE VAPEUR	1	1	1	-	1				
10	12007766	CONDUCTO SALIDA VAPOR	STEAM OUTLET HOSE	CONDUIT SORTIE DE VAPEUR	-	-	-	1	-				
11	12128218	TAPÓN CUBA	TUB CAP	BOUCHON CUVE	-	1	1	1	1				
12	12134512	JUNTA TÓRICA PRESOSTATO	PRESSURE CHAMBER O-RING	JOINT TORIQUE PRESSOSTAT	1	1	1	1	1				
13	12134660	PRESOSTATO CUBA	TUB PRESSURE CHAMBER	PRESSOSTAT CUVE	1	1	1	1	1				
14	12023265	CONDUCTO REBOSADERO CUBA	TUB OVERFLOW PIPE	CONDUIT SÉVERSOIR CUVE	1	-	-	-	-				
14	12023271	CONDUCTO REBOSADERO CUBA	TUB OVERFLOW PIPE	CONDUIT SÉVERSOIR CUVE	-	1	-	-	-				
14	12024866	CONDUCTO REBOSADERO CUBA	TUB OVERFLOW PIPE	CONDUIT SÉVERSOIR CUVE	-	-	1	-	-				
14	12024833	CONDUCTO REBOSADERO CUBA	TUB OVERFLOW PIPE	CONDUIT SÉVERSOIR CUVE	-	-	-	1	1				
15	12044165	CONDUCTO DESAGÜE CUBA	TUB DRAINAGE PIPE	TUYAU D'ÉCOULEMENT CUVE	1	1	1	-	1				
15	12025016	CONDUCTO DESAGÜE CUBA	TUB DRAINAGE PIPE	TUYAU D'ÉCOULEMENT CUVE	-	-	-	1	-				
16	12137690	ELECTROV 230V AC 50/50 Hz	230V AC 50/50 Hz ELECTROV	ÉLECTROVANNE 230V AC 50/50 Hz	1	1	1	1	1				ABIERTA / OPEN / OUVERTE
16	12213534	ELECTROV 230V AC 50/50 Hz	230V AC 50/50 Hz ELECTROV	ÉLECTROVANNE 230V AC 50/50 Hz	1	1	1	1	1				CERRADA / CLOSED / FERMÉE

LÁMINA D / D DRAWING / PLAN D

[illegible]

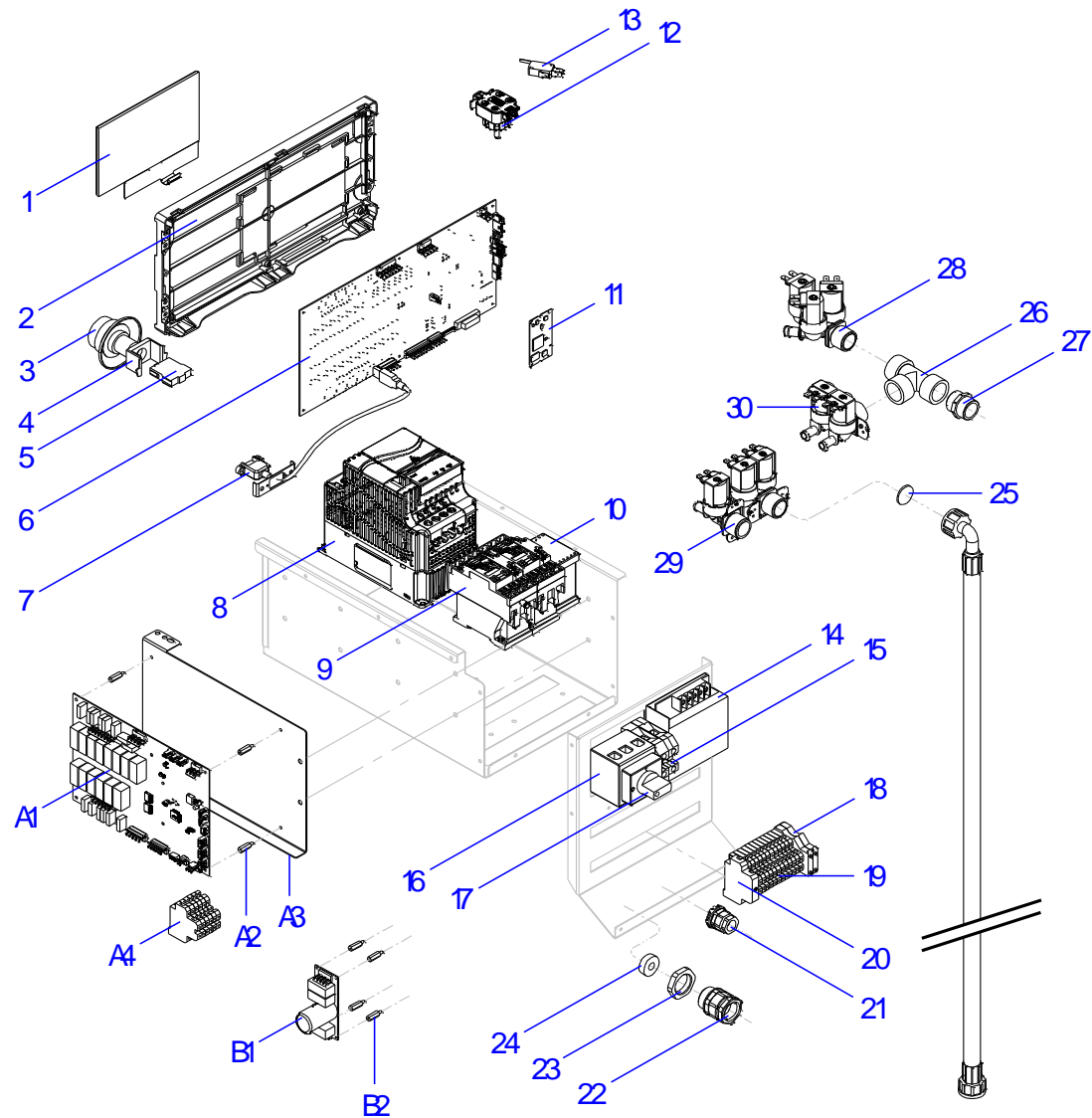


LÁMINA E / E DRAWING / PLAN E

ITEM	REF.	DENOMINACIÓN	DENOMINATION	DÉNOMINATION	LA-11 TP2	LA-14 TP2	LA-18 TP2	LA-25 TP2	LA-35 TP2		HASTA / UNTIL / JUSQU'À	DESDE / FROM / DEPUIS	OBSERVACIONES / NOTES / OBSERVATIONS
1	12157588	DISPLAY TP 7"	7" TP DISPLAY	DISPLAY TP 7"	1	1	1	-	-				
2	12165732	SOPORTE MAIN BOARD	MAIN BOARD SUPPORT	SUPPORT MAIN BOARD	1	1	1	-	-				
3	12120235	SETA DE EMERGENCIA	EMERGENCY STOP BUTTON	BOUTON D'ARRÊT D'URGENCE	1	1	1	-	-				version PULSADOR EMERGENCIA / EMERGENCY BUTTON / BOUTON D'URGENCE
4	12120238	SOPORTE SETA EMERGENCIA	EMERGENCY STOP SUPPORT	SUPPORT BOUTON D'ARRÊT D'UR	1	1	1	-	-				
5	12120237	PULSAD. 250V AC 16A 1VIA 2POS I	250V AC 16A 1WAY 2POS UL SWIT	BOUTON 250V AC 16A 1VIA 2POS I	1	1	1	-	-				
6	12168823	TARJETA PRINCIPAL TP2	TP2 MAIN BOARD	CARTE PRINCIPALE TP2	1	1	1	-	-				
7	12133373	CABLE USB MACHO-HEMBRA	USB WIRE MALE-FEMALE	CÂBLE MÂLE-FEMELLE	1	1	1	-	-				
8	12116803	VARIADOR DELTA PROGRAMADO	PROGRAMMED DELTA INVERTER	VARIATEUR DELTA PROGRAMMÉ	1	-	-	-	-				
8	12214488	VARIADOR DELTA PROGRAMADO	PROGRAMMED DELTA INVERTER	VARIATEUR DELTA PROGRAMMÉ	1	-	-	-	-				version BARCO / SHIP / BATEAU
8	12116804	VARIADOR DELTA PROGRAMADO	PROGRAMMED DELTA INVERTER	VARIATEUR DELTA PROGRAMMÉ	-	1	-	-	-				
8	12214501	VARIADOR DELTA PROGRAMADO	PROGRAMMED DELTA INVERTER	VARIATEUR DELTA PROGRAMMÉ	-	1	-	-	-				version BARCO / SHIP / BATEAU
8	12116805	VARIADOR DELTA PROGRAMADO	PROGRAMMED DELTA INVERTER	VARIATEUR DELTA PROGRAMMÉ	-	-	1	-	-				version 3F+N+T (400V)
8	12225365	VARIADOR DELTA PROGRAMADO	PROGRAMMED DELTA INVERTER	VARIATEUR DELTA PROGRAMMÉ	-	-	1	-	-				version 3F+N+T (230V)
8	12225368	VARIADOR DELTA PROGRAMADO	PROGRAMMED DELTA INVERTER	VARIATEUR DELTA PROGRAMMÉ	-	-	1	-	-				version 1F+N+T (230V)
8	12214504	VARIADOR DELTA PROGRAMADO	PROGRAMMED DELTA INVERTER	VARIATEUR DELTA PROGRAMMÉ	-	-	1	-	-				version BARCO / SHIP / BATEAU
9	12024040	CONTACTOR 230V 50/60Hz 20A	230V 50/60Hz 20A CONTACTOR	CONTACTEUR 230V 50/60Hz 20A	2	2	2	-	-				
10	12024011	CONTACTOR 230V AC 16A 4via UL	230V AC 16A 4via UL CONTACTOR	CONTACTOR 230V AC 16A 4A 4VO	1	1	1	-	-				
11	12131303	MODULO PROCESADOR GRABAD	RECORDED PROCESSOR MODULE	MODULE PROCESSEUR GRAVÉ	1	1	1	-	-				
12	12128262	SENSOR DE PRESION 50mbar	50mbar PRESSURE SENSOR	CAPTEUR DE PRESSION 50mbar	1	1	1	-	-				
13	12024696	MICRORRUPTOR PUERTA	DOOR MICROSWITCH	MICRORUPTEUR PORTE	1	1	1	-	-				
14	12116823	TRANSFORMADOR 1N 50W 240V/1	1N 50W 240V/12V UL TRANSFORM	TRANSFORMATEUR 1N 50W 240V/	1	1	1	-	-				
15	12024515	BORNA TIERRA 35mm	GROUND CONNECTOR 35MM	BORNE TERRE 35mm	1	1	1	-	-				
16	12025143	BORNA NEUTRA AZUL 125A 35mm	BLUE NEUTRAL CONNECTOR 35M	BORNE NEUTRE BLEUE 35mm2 1v	1	1	1	-	-				
17	12024858	INTERRUP. 32A 4VIA 2POS SECCI	32A 4WAY 2POS ISOLATOR SWITC	COMMUTATEUR 32A 4VEUE 2POS	1	-	-	-	-				
17	12024628	INTERRUP. 63A 3VIA 2POS SECCI	63A 3WAY 2POS ISOLATOR SWITC	COMMUTATEUR 63A 3VEUE 2POS	-	1	1	-	-				version E / E / E
17	12024858	INTERRUP. 32A 4VIA 2POS SECCI	32A 4WAY 2POS ISOLATOR SWITC	COMMUTATEUR 32A 4VEUE 2POS	-	1	1	-	-				version HW, S, BARCO / HW, S, SHIP / HW, S, BATEA
18	12025158	BORNA PORTAFUSIBLE 10A 6mm2	FUSE HOLDER CONNECTOR 10A €	BORNE PORTE-FUSIBLES 10A 6mr	2	2	2	-	-				
19	12025180	REGLETA 2 PISOS 24A 2,50mm2	UL 24A 2,5mm2 UL TERMINAL BLOCK	BORNIER 2 ÉTAGES 24A 2,50mm2	12	12	12	-	-				version 3F+N+T
20	12024199	TOPE FINAL	END STOP	BUTÉE	1	1	1	-	-				
21	12009966	PRENSA ESTOPA DOSIFICACION	WIRES PROTECTOR	PRESSE-ÉTOUPE DOSAGE	1	1	1	-	-				
22	12009927	PRENSA ESTOPA PG-21	WIRES PROTECTOR PG-21	PRESSE-ÉTOUPE PG-21	1	1	1	-	-				

LÁMINA E / E DRAWING / PLAN E

[illegible]

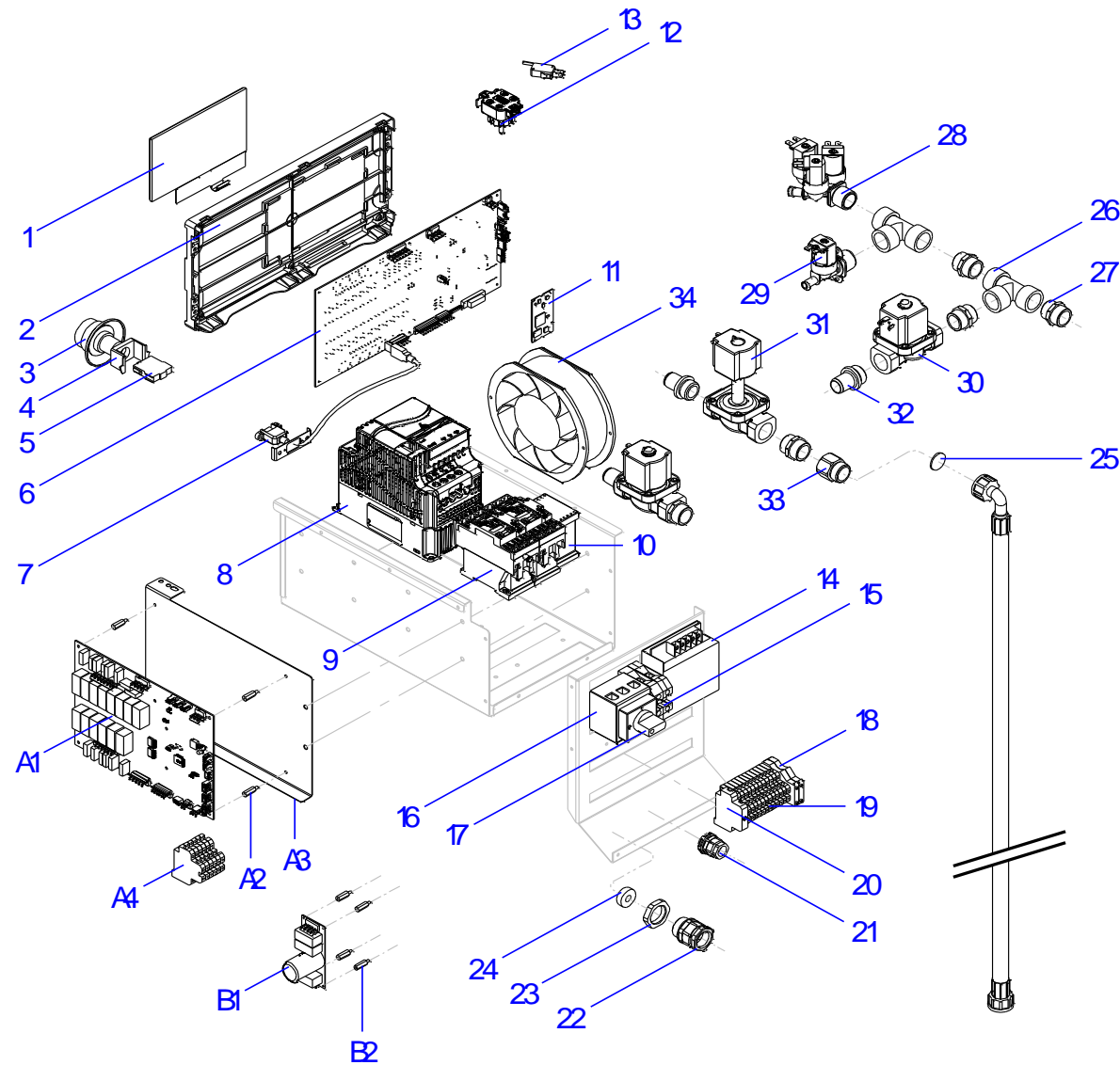


LÁMINA F / F DRAWING / PLAN F

ITEM	REF.	DENOMINACIÓN	DENOMINATION	DÉNOMINATION	LA-11 TP2	LA-14 TP2	LA-18 TP2	LA-25 TP2	LA-35 TP2		HASTA / UNTIL / JUSQU'À	DESDE / FROM / DEPUIS	OBSERVACIONES / NOTES / OBSERVATIONS
1	12157588	DISPLAY TP 7"	7" TP DISPLAY	DISPLAY TP 7"	-	-	-	1	1				
2	12165732	SOPORTE MAIN BOARD	MAIN BOARD SUPPORT	SUPPORT MAIN BOARD	-	-	-	1	1				
3	12120235	SETA DE EMERGENCIA	EMERGENCY STOP BUTTON	BOUTON D'ARRÊT D'URGENCE	-	-	-	1	1				version PULSADOR EMERGENCIA / EMERGENCY BUTTON / BOUTON D'URGENCE
4	12120238	SOPORTE SETA EMERGENCIA	EMERGENCY STOP SUPPORT	SUPPORT BOUTON D'ARRÊT D'UR	-	-	-	1	1				
5	12120237	PULSAD. 250V AC 16A 1VIA 2POS	250V AC 16A 1WAY 2POS UL SWIT	BOUTON 250V AC 16A 1VOIE 2POS	-	-	-	1	1				
6	12168823	TARJETA PRINCIPAL TP2	TP2 MAIN BOARD	CARTE PRINCIPALE TP2	-	-	-	1	1				
7	12133373	CABLE USB MACHO-HEMBRA	USB WIRE MALE-FEMALE	CÂBLE MÂLE-FEMELLE	-	-	-	1	1				
8	12225365	VARIADOR DELTA PROGRAMADO	PROGRAMMED DELTA INVERTER	VARIATEUR DELTA PROGRAMMÉ	-	-	-	1	-				version 230V
8	12214507	VARIADOR DELTA PROGRAMADO	PROGRAMMED DELTA INVERTER	VARIATEUR DELTA PROGRAMMÉ	-	-	-	1	-				version 400V
8	12119402	VARIADOR DELTA PROGRAMADO	PROGRAMMED DELTA INVERTER	VARIATEUR DELTA PROGRAMMÉ	-	-	-	-	1				version E (400V)
8	12131830	VARIADOR DELTA PROGRAMADO	PROGRAMMED DELTA INVERTER	VARIATEUR DELTA PROGRAMMÉ	-	-	-	-	1				version HW, S (400V)
8	12226305	VARIADOR DELTA PROGRAMADO	PROGRAMMED DELTA INVERTER	VARIATEUR DELTA PROGRAMMÉ	-	-	-	-	1				version 230V
8	12226306	VARIADOR DELTA PROGRAMADO	PROGRAMMED DELTA INVERTER	VARIATEUR DELTA PROGRAMMÉ	-	-	-	-	1				version BARCO / SHIP / BATEAU
9	12041014	CONTACTOR 230V AC 40A 4via UL	230V AC 40A 4WAY UL CONTACTC	CONTACTEUR 230V AC 40A 4VOIE	-	-	-	2	2				
10	12024011	CONTACTOR 230V AC 16A 4via UL	230V AC 16A 4WAY UL CONTACTC	CONTACTEUR 230V AC 16A 4VOIE	-	-	-	1	1				
11	12131303	MODULO PROCESADOR GRABAD	RECORDED PROCESSOR MODUL	MODULE PROCESSEUR GRAVÉ	-	-	-	1	1				
12	12128262	SENSOR DE PRESION 50mbar	50mbar PRESSURE SENSOR	CAPTEUR DE PRESSION 50mbar	-	-	-	1	1				
12	12024696	MICRORRUPTOR PUERTA	DOOR MICROSWITCH	MICRORUPTEUR PORTE	-	-	-	1	1				
13	12116823	TRANSFORMADOR 1N 50W 240V/1	1N 50W 240V/12V UL TRANSFORM	TRANSFORMATEUR 1N 50W 240V/	-	-	-	1	1				
14	12024515	BORNA TIERRA 35mm2	GROUND CONNECTOR 35mm2	BORNE TERRE 35mm2	-	-	-	1	1				
15	12025143	BORNA NEUTRA AZUL 35mm2 1via	BLUE NEUTRAL CONNECTOR 35m	BORNE NEUTRE BLEUE 35mm2 1v	-	-	-	1	1				
16	12024858	INTERRUP. 32A 4VIA 2POS SECCI	32A 4WAY 2POS ISOLATOR SWITC	COMMUTATEUR 32A 4VEUE 2POS	-	-	-	1	1				
17	12024628	INTERRUP. 63A 3VIA 2POS SECCI	63A 3WAY 2POS ISOLATOR SWITC	COMMUTATEUR 63A 3VEUE 2POS	-	-	-	1	1				version HW, S (1F+N+T)
17	12024628	INTERRUP. 63A 3VIA 2POS SECCI	63A 3WAY 2POS ISOLATOR SWITC	COMMUTATEUR 63A 3VEUE 2POS	-	-	-	1	1				version E, HW, S (3F+N+T)
18	12025158	BORNA PORTAFUSIBLE 6,3A 1 VIA	FUSE HOLDER CONNECTOR 6,3A	BORNE PORTE-FUSIBLES 6,3A 1 V	-	-	-	2	2				
19	12025180	REGLETA 2 PISOS 24A 2,50MM2 UI	24A 2,5MM2 UL TERMINAL BLOCK	BORNIER 2 ÉTAGES 24A 2,50mm2	-	-	-	12	12				version 3F+N+T
20	12024199	TOPE FINAL	END STOP	BUTÉE	-	-	-	1	1				
21	12009966	PRENSA ESTOPAS	WIRES PROTECTOR	PRESSE-ÉTOUPE	-	-	-	1	1				
22	12009927	PRENSA ESTOPAS	WIRES PROTECTOR	PRESSE-ÉTOUPE	-	-	-	1	-				
22	12009851	PRENSA ESTOPAS	WIRES PROTECTOR	PRESSE-ÉTOUPE	-	-	-	-	1				
23	12010063	CONTRATUERCA	LOCKNUT	ÉCROU	-	-	-	1	-				

LÁMINA F / F DRAWING / PLAN F

[illegible]

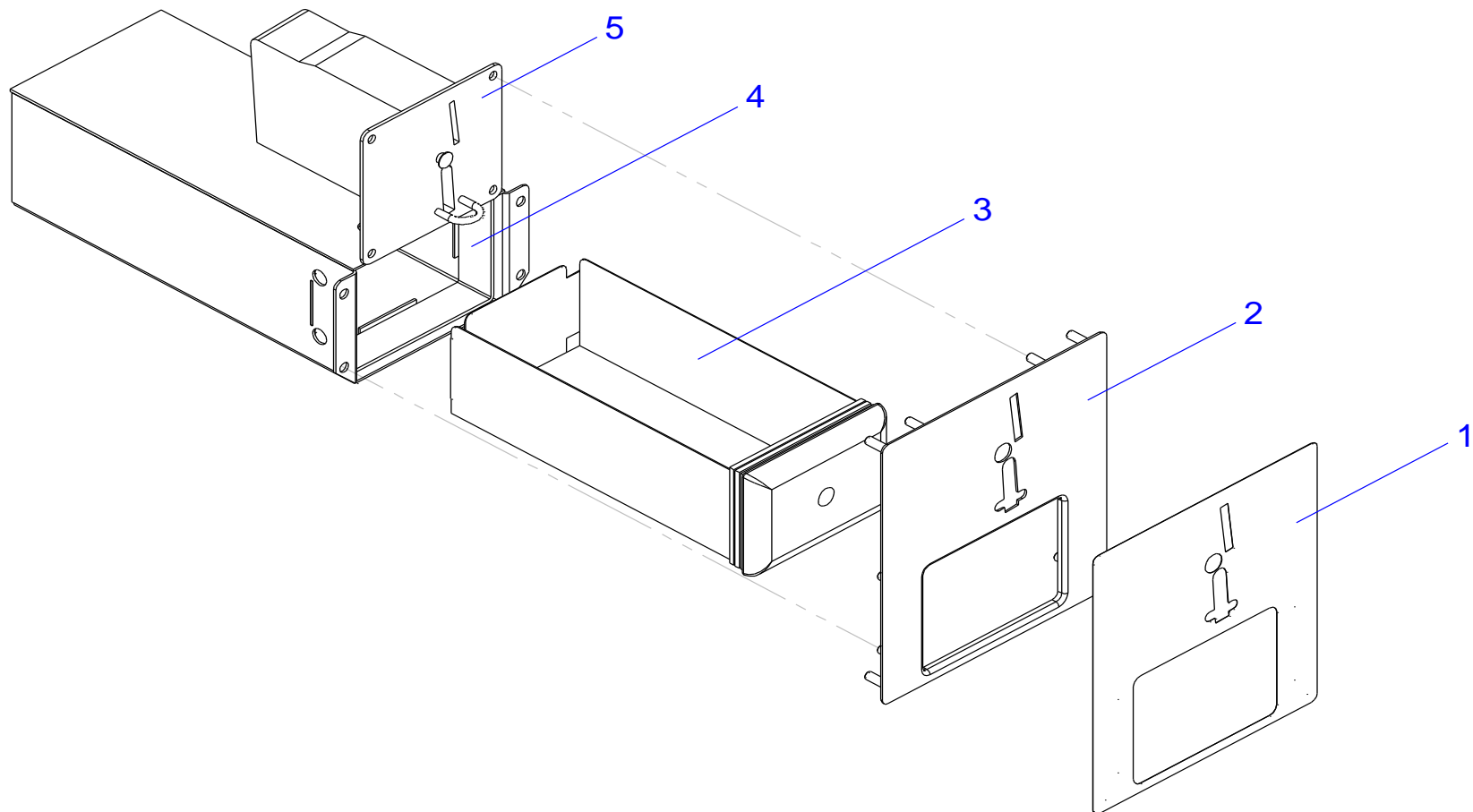


LÁMINA G / G DRAWING / PLAN G

ITEM	REF.	DENOMINACIÓN	DENOMINATION	DÉNOMINATION	LA-11 TP2	LA-14 TP2	LA-18 TP2	LA-25 TP2	LA-35 TP2		HASTA / UNTIL / JUSQU'À	DESDE / FROM / DEPUIS	OBSERVACIONES / NOTES / OBSERVATIONS
1	12041953	ADHESIVO MONEDERO	COIN SLOT STICKER	ADHÉSIF PORTA-MONNAIE	1	1	1	1	1				version MONEDERO / COIN SLOT / PORTA-MONNAIE
1	12041954	ADHESIVO CP NEGRO	BLACK CP STICKER	ADHÉSIF CP NOIR	1	1	1	1	1				version CENTRAL PAGO / PAY STATION / CENTRALE DE PAIEMENT
	12007778	ETIQUETA ISTRUCCIONES COIN	COIN INSTRUCTIONS LABEL	ÉTIQUETTE INSTRUCTIONS COIN	1	1	1	1	1				
2	12130334	CHAPA MONEDERO COMPL.	COIN SLOT PLATE COMPL.	TÔLE PORTA-MONNAIE	1	1	1	1	1				version MONEDERO / COIN SLOT / PORTA-MONNAIE
2	12133105	TAPA CENTRAL DE PAGO	PAY STATION PLATE	TÔLE CENTRALE DE PAIEMENT	1	1	1	1	1				version CENTRAL PAGO / PAY STATION / CENTRALE
3	12162010	XL 8" MONEY BOX - FLAT FACE (71XL 8" MONEY BOX - FLAT FACE (71XL 8" MONEY BOX - FLAT FACE (71	XL 8" MONEY BOX - FLAT FACE (71XL 8" MONEY BOX - FLAT FACE (71XL 8" MONEY BOX - FLAT FACE (71	XL 8" MONEY BOX - FLAT FACE (71XL 8" MONEY BOX - FLAT FACE (71XL 8" MONEY BOX - FLAT FACE (71	1	1	1	1	1				
3	12162011	XL 8" MONEY BOX - FLAT FACE (71XL 8" MONEY BOX - FLAT FACE (71XL 8" MONEY BOX - FLAT FACE (71	XL 8" MONEY BOX - FLAT FACE (71XL 8" MONEY BOX - FLAT FACE (71XL 8" MONEY BOX - FLAT FACE (71	XL 8" MONEY BOX - FLAT FACE (71XL 8" MONEY BOX - FLAT FACE (71XL 8" MONEY BOX - FLAT FACE (71	1	1	1	1	1				
3	12162012	XL 8" MONEY BOX - FLAT FACE (71XL 8" MONEY BOX - FLAT FACE (71XL 8" MONEY BOX - FLAT FACE (71	XL 8" MONEY BOX - FLAT FACE (71XL 8" MONEY BOX - FLAT FACE (71XL 8" MONEY BOX - FLAT FACE (71	XL 8" MONEY BOX - FLAT FACE (71XL 8" MONEY BOX - FLAT FACE (71XL 8" MONEY BOX - FLAT FACE (71	1	1	1	1	1				
3	12162013	XL 8" MONEY BOX - FLAT FACE (71XL 8" MONEY BOX - FLAT FACE (71XL 8" MONEY BOX - FLAT FACE (71	XL 8" MONEY BOX - FLAT FACE (71XL 8" MONEY BOX - FLAT FACE (71XL 8" MONEY BOX - FLAT FACE (71	XL 8" MONEY BOX - FLAT FACE (71XL 8" MONEY BOX - FLAT FACE (71XL 8" MONEY BOX - FLAT FACE (71	1	1	1	1	1				
3	12162014	XL 8" MONEY BOX - FLAT FACE (71XL 8" MONEY BOX - FLAT FACE (71XL 8" MONEY BOX - FLAT FACE (71	XL 8" MONEY BOX - FLAT FACE (71XL 8" MONEY BOX - FLAT FACE (71XL 8" MONEY BOX - FLAT FACE (71	XL 8" MONEY BOX - FLAT FACE (71XL 8" MONEY BOX - FLAT FACE (71XL 8" MONEY BOX - FLAT FACE (71	1	1	1	1	1				
3	12162015	XL 8" MONEY BOX - FLAT FACE (71XL 8" MONEY BOX - FLAT FACE (71XL 8" MONEY BOX - FLAT FACE (71	XL 8" MONEY BOX - FLAT FACE (71XL 8" MONEY BOX - FLAT FACE (71XL 8" MONEY BOX - FLAT FACE (71	XL 8" MONEY BOX - FLAT FACE (71XL 8" MONEY BOX - FLAT FACE (71XL 8" MONEY BOX - FLAT FACE (71	1	1	1	1	1				
3	12162016	XL 8" MONEY BOX - FLAT FACE (71XL 8" MONEY BOX - FLAT FACE (71XL 8" MONEY BOX - FLAT FACE (71	XL 8" MONEY BOX - FLAT FACE (71XL 8" MONEY BOX - FLAT FACE (71XL 8" MONEY BOX - FLAT FACE (71	XL 8" MONEY BOX - FLAT FACE (71XL 8" MONEY BOX - FLAT FACE (71XL 8" MONEY BOX - FLAT FACE (71	1	1	1	1	1				
3	12162017	XL 8" MONEY BOX - FLAT FACE (71XL 8" MONEY BOX - FLAT FACE (71XL 8" MONEY BOX - FLAT FACE (71	XL 8" MONEY BOX - FLAT FACE (71XL 8" MONEY BOX - FLAT FACE (71XL 8" MONEY BOX - FLAT FACE (71	XL 8" MONEY BOX - FLAT FACE (71XL 8" MONEY BOX - FLAT FACE (71XL 8" MONEY BOX - FLAT FACE (71	1	1	1	1	1				
3	12162018	XL 8" MONEY BOX - FLAT FACE (71XL 8" MONEY BOX - FLAT FACE (71XL 8" MONEY BOX - FLAT FACE (71	XL 8" MONEY BOX - FLAT FACE (71XL 8" MONEY BOX - FLAT FACE (71XL 8" MONEY BOX - FLAT FACE (71	XL 8" MONEY BOX - FLAT FACE (71XL 8" MONEY BOX - FLAT FACE (71XL 8" MONEY BOX - FLAT FACE (71	1	1	1	1	1				
3	12162019	XL 8" MONEY BOX - FLAT FACE (71XL 8" MONEY BOX - FLAT FACE (71XL 8" MONEY BOX - FLAT FACE (71	XL 8" MONEY BOX - FLAT FACE (71XL 8" MONEY BOX - FLAT FACE (71XL 8" MONEY BOX - FLAT FACE (71	XL 8" MONEY BOX - FLAT FACE (71XL 8" MONEY BOX - FLAT FACE (71XL 8" MONEY BOX - FLAT FACE (71	1	1	1	1	1				
4	12130337	PORTACAJAS MONEDAS	COIN BOX HOLDER COMPL.	PORTE-BOÎTE DE MONNAIE	1	1	1	1	1				version MONEDERO / COIN SLOT / PORTA-MONNAIE
5	12023342	MONEDERO WH (EUR-GBP)	COIN SLOT WH (EUR-GBP)	PORTA-MONNAIE WH (EUR-GBP)	1	1	1	1	1				
5	12044494	MONEDERO WH (ARS-CLP-BRL)	COIN SLOT WH (ARS-CLP-BRL)	PORTA-MONNAIE WH (ARS-CLP-BI	1	1	1	1	1				
5	12044490	MONEDERO WH (AUD-NZD-JPY)	COIN SLOT WH (AUD-NZD-JPY)	PORTA-MONNAIE WH (AUD-NZD-JI	1	1	1	1	1				
5	12044488	MONEDERO WH (CNY-TWD-HKD)	COIN SLOT WH (CNY-TWD-HKD)	PORTA-MONNAIE WH (CNY-TWD-I	1	1	1	1	1				
5	12044496	MONEDERO WH (MAD-DZD-TND)	COIN SLOT WH (MAD-DZD-TND)	PORTA-MONNAIE WH (MAD-DZD-T	1	1	1	1	1				
5	12044489	MONEDERO WH (MYR-SGD-IDR)	II COIN SLOT WH (MYR-SGD-IDR)	ID PORTA-MONNAIE WH (MYR-SGD-II	1	1	1	1	1				
5	12151342	MONEDERO WH (MYR-SGD-IDR)	II COIN SLOT WH (MYR-SGD-IDR)	ID PORTA-MONNAIE WH (MYR-SGD-II	1	1	1	1	1				
5	12044492	MONEDERO WH (RUB-ROB-CZK)	COIN SLOT WH (RUB-ROB-CZK)	PORTA-MONNAIE WH (RUB-ROB-C	1	1	1	1	1				
5	12044491	MONEDERO WH (TRY-PLN)	COIN SLOT WH (TRY-PLN)	PORTA-MONNAIE WH (TRY-PLN)	1	1	1	1	1				
5	12044487	MONEDERO WH (USD-MXN-CAD)	COIN SLOT WH (USD-MXN-CAD)	PORTA-MONNAIE WH (USD-MXN-C	1	1	1	1	1				
5	12044493	MONEDERO WH (VEF-PEN-COP)	COIN SLOT WH (VEF-PEN-COP)	PORTA-MONNAIE WH (VEF-PEN-C	1	1	1	1	1				
	12161119	SELECTOR FICHAS F97A-W6000-i1	TIKEN SELECTOR F97A-W6000-i12	SELECTEUR DE JETON F97A-W600	1	1	1	1	1				

VARIOS / MISCELLANEOUS / DIVERS

[illegible]

REPUESTOS RECOMENDADOS / RECOMMENDED SPARE PARTS / PIÈCE DE RECHANGE RECOMMANDÉ

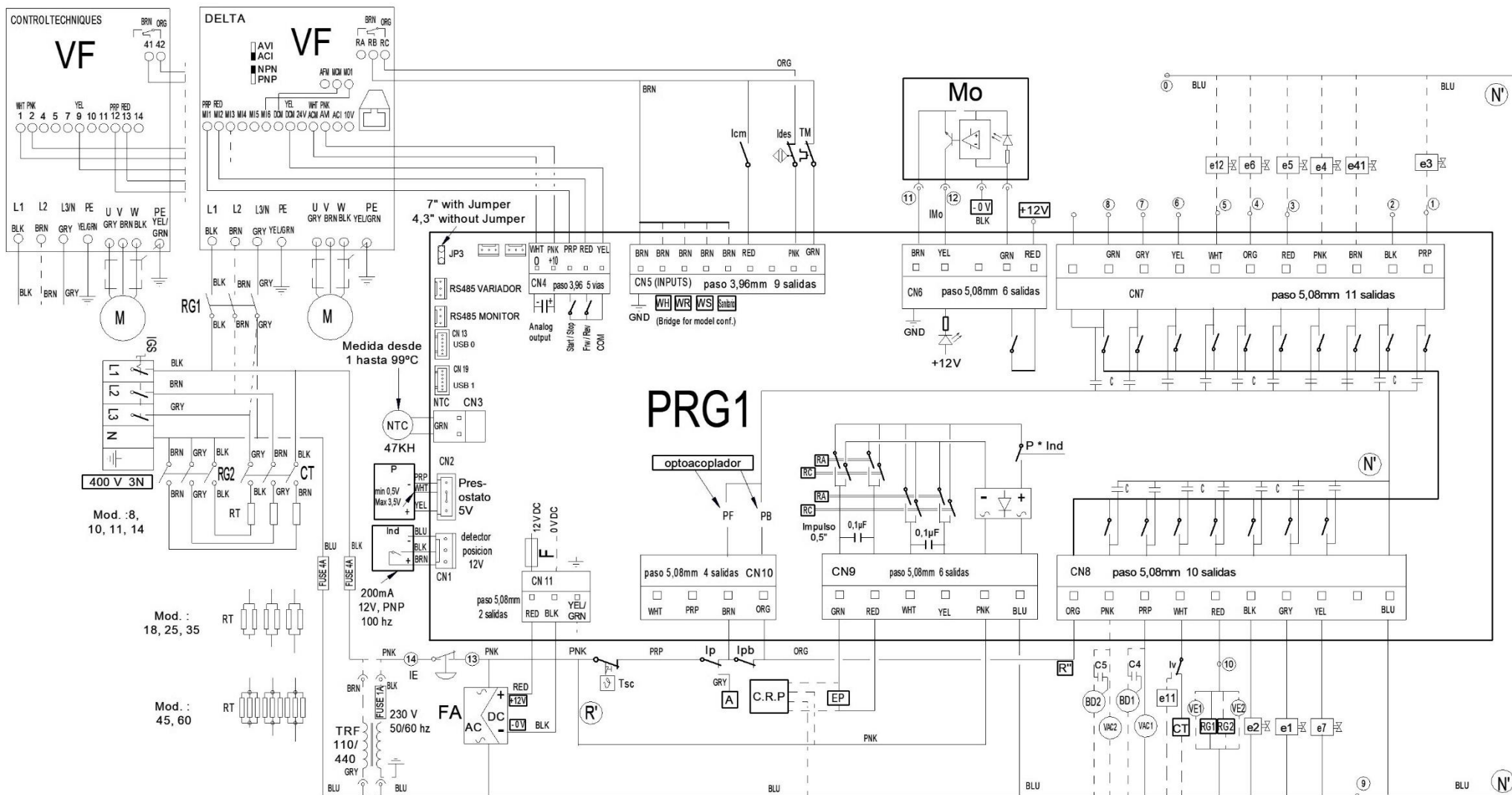
ITEM	REF.	DENOMINACIÓN	DENOMINATION	DÉNOMINATION	LR-11 TP2	LR-14 TP2	LR-18 TP2	LR-25 TP2	LR-35 TP2		HASTA / UNTIL / JUSQU'À	DESDE / FROM / DEPUIS	OBSERVACIONES / NOTES / OBSERVATIONS
15	12166894	ADHESIVO DISPLAY TP2 FAGOR	FAGOR TP2 DISPLAY STICKER	ADHÉSIF DISPLAY TP2 FAGOR	1	1	1	1	1				LÁMINA A / A DRAWING / PLAN A
17	12126497	ADHESIVO ON/OFF NEGRO	BLACK ON/OFF STICKER	ADHÉSIF ON/OFF NOIRE	1	1	1	1	1				
22	12140743	CIERRE COMPLETO UL 205V	UL 205V LOCK	SERRURE UL 205V	1	1	1	1	1				
24	12023284	JUNTA PUERTA	DOOR SEAL	JOINT DE PORTE	1	1	-	-	-				
24	12141203	JUNTA PUERTA	DOOR SEAL	JOINT DE PORTE	-	-	1	1	-				
24	12048069	JUNTA PUERTA	DOOR SEAL	JOINT DE PORTE	-	-	-	-	1				LÁMINA B / B DRAWING / PLAN B
31	12025215	CASQUILLO PUERTA	DOOR BUSHING	BAGUE PORTE	1	1	1	1	1				
32	12040850	MICRORRUPTOR 250V AC 16A	250V AC 16A MICRO-SWITCH	MICRORRUPTEUR 250V AC 16A	1	-	-	-	-				
6	12025077	AMORTIGUADOR 120 N SUSPA	SUSPA 120 N DAMPER	AMORTISSEUR 120 N SUSPA	4	-	8	-	-				
6	12025078	AMORTIGUADOR 90 N SUSPA	SUSPA 90 N DAMPER	AMORTISSEUR 90 N SUSPA	-	8	-	-	-				
6	12024980	AMORTIGUADOR 140 N SUSPA	SUSPA 140 N DAMPER	AMORTISSEUR 140 N SUSPA	-	-	-	8	12				LÁMINA C / C DRAWING / PLAN C
5	12010078	JUNTA TOR 55x3	55x3 O-RING	JOINT TOR 55x3	1	-	-	-	-				
5	12010067	JUNTA TOR 60x3	60x3 O-RING	JOINT TOR 60x3	-	1	-	-	-				
5	12010054	JUNTA TOR.69x3	69x3 O-RING	JOINT TOR 69x3	-	-	1	-	-				
5	12010019	JUNTA TOR.82x3	82x3 O-RING	JOINT TOR 82x3	-	-	-	1	1				
18	12023273	CORREA 8	BELT 8	COURROIE 8	1	-	-	-	-				
18	12023269	CORREA LF-13	BELT POLY-LF-13	COURROIE LF-13	-	1	-	-	-				
18	12023267	CORREA LF-18	BELT LF-18	COURROIE LF-18	-	-	1	-	-				
18	12023252	CORREA PJ 1854	BELT PJ 1854	COURROIE PJ 1854	-	-	-	1	-				
18	12153177	CORREA POLY-V 12PJ1956	BELT POLY-V PK 2680	COURROIE POLY V PK 2680	-	-	-	-	1				
24	12025036	CONJUNTO Sonda 64KOhmio NTC	PROBE 64KOhm NTC	SONDE 64KOhmio NTC	1	1	1	1	1				
25	12096597	TERMOSTATO DE SEGURIDAD	SAFETY THERMOSTAT	THERMOSTAT DE SÉCURITÉ	1	1	1	1	1				
26	12096226	RESISTENCIA 2000W 264MM	RESISTANCE 2000W 264MM	RÉSISTANCE 2000W 264MM	3	-	-	-	-				
26	12096023	RESISTENCIA 3000W 277MM	RESISTANCE 3000W 277MM	RÉSISTANCE 3000W 277MM	-	3	-	-	-				
26	12096051	RESISTENCIA 4000W 347MM	RESISTANCE 4000W 347MM	RÉSISTANCE 4000W 347MM	-	-	3	-	-				
26	12041359	RESISTENCIA 6.000W 509MM	RESISTANCE 6.000W 509MM	RÉSISTANCE 6.000W 509MM	-	-	-	3	-				
26	12092855	RESISTENCIA 7.000W 562MM	RESISTANCE 7.000W 562MM	RÉSISTANCE 7.000W 562MM	-	-	-	-	3				
27	12023197	MOTOR 230V AC 3 50/60Hz 750W	230V AC 3 50/60Hz 750W ENGINE	MOTEUR 230V AC 3 50/60Hz 750W	1	-	-	-	-				
27	12023195	MOTOR 230V AC 3 50/60Hz 1,1kW	230V AC 3 50/60Hz 1,1kW ENGINE	MOTEUR 230V AC 3 50/60Hz 1,1kW	-	1	-	-	-				
27	12023194	MOTOR 230V AC 3 50/60Hz 2,2kW	230V AC 3 50/60Hz 2,2kW ENGINE	MOTEUR 230V AC 3 50/60Hz 2,2kW	-	-	1	-	-				
27	12172751	MOTOR 230V AC 3 60Hz 4kW	230V AC 3 60Hz 4kW ENGINE	MOTEUR 230V AC 3 60Hz 4kW	-	-	-	1	-				

REPUESTOS RECOMENDADOS / RECOMMENDED SPARE PARTS / PIÈCE DE RECHANGE RECOMMANDÉ

ITEM	REF.	DENOMINACIÓN	DENOMINATION	DÉNOMINATION	LR-11 TP2	LR-14 TP2	LR-18 TP2	LR-25 TP2	LR-35 TP2		HASTA / UNTIL / JUSQU'À	DESDE / FROM / DEPUIS	OBSERVACIONES / NOTES / OBSERVATIONS
27	12046405	MOTOR 230V AC 3 50Hz 4kW	230V AC 3 50Hz 4kW ENGINE	MOTEUR 230V AC 3 50Hz 4kW	-	-	-	-	1				LÁMINA C / C DRAWING / PLAN C
29	12114100	SENSOR MAGNÉTICO 12V	12V MAGNETIC SENSOR	CAPTEUR MAGNÉTIQUE	1	1	1	1	1				
34	12024477	SENSOR DE DESEQUILIBRIO	IMBALANCE SENSOR	CAPTEUR DE DÉSÉQUILIBRIO	-	1	1	1	1				
12	12134512	JUNTA TÓRICA PRESOSTATO	PRESSURE CHAMBER O-RING	JOINT TORIQUE PRESSOSTAT	1	1	1	1	1				LÁMINA D / D DRAWING / PLAN D
13	12134660	PRESOSTATO CUBA	TUB PRESSURE CHAMBER	PRESSOSTAT CUVE	1	1	1	1	1				
16	12137690	ELECTROV 230V AC 50/50 Hz	230V AC 50/50 Hz ELECTROV	ÉLECTROVANNE 230V AC 50/50 Hz	1	1	1	1	1				
16	12213534	ELECTROV 230V AC 50/50 Hz	230V AC 50/50 Hz ELECTROV	ÉLECTROVANNE 230V AC 50/50 Hz	1	1	1	1	1				
21	12021970	INYECTOR VAPOR 8,13,18	STEAM JET 10,13,18	ENJECTEUR VAPEUR 8,13,18	1	1	1	-	-				
21	12021640	INYECTOR VAPOR 25	STEAM JET 25, 35	INJECTEUR VAPEUR 25	-	-	-	1	1				
25	12023340	VÁLVULA VAPOR 1/2 50/60Hz	STEAM VALVE 1/2 50/60HZ	VALVE VAPEUR 1/2 50/60Hz	1	1	1	1	-				
25	12024331	VÁLVULA VAPOR 3/4" 60Hz	STEAM VALVE 3/4 60HZ	VALVE VAPEUR 3/4 60Hz	-	-	-	-	1				LÁMINA E / E DRAWING / PLAN E
1	12157588	DISPLAY TP 7"	7" TP DISPLAY	DISPLAY TP 7"	1	1	1	-	-				
3	12120235	SETA DE EMERGENCIA	EMERGENCY STOP BUTTON	BOUTON D'ARRÊT D'URGENCE	1	1	1	-	-				
4	12120238	SOPORTE SETA EMERGENCIA	EMERGENCY STOP SUPPORT	SUPPORT BOUTON D'ARRÊT D'UR	1	1	1	-	-				
5	12120237	PULSAD. 250V AC 16A 1VIA 2POS	250V AC 16A 1WAY 2POS UL SWIT	BOUTON 250V AC 16A 1VIA 2POS	1	1	1	-	-				
6	12168823	TARJETA PRINCIPAL TP2	TP2 MAIN BOARD	CARTE PRINCIPALE TP2	1	1	1	-	-				
7	12133373	CABLE USB MACHO-HEMBRA	USB WIRE MALE-FEMALE	CÂBLE MÂLE-FEMELLE	1	1	1	-	-				
8	12116803	VARIADOR DELTA PROGRAMADO	PROGRAMMED DELTA INVERTER	VARIATEUR DELTA PROGRAMMÉ	1	-	-	-	-				
8	12214488	VARIADOR DELTA PROGRAMADO	PROGRAMMED DELTA INVERTER	VARIATEUR DELTA PROGRAMMÉ	1	-	-	-	-				
8	12116804	VARIADOR DELTA PROGRAMADO	PROGRAMMED DELTA INVERTER	VARIATEUR DELTA PROGRAMMÉ	-	1	-	-	-				
8	12214501	VARIADOR DELTA PROGRAMADO	PROGRAMMED DELTA INVERTER	VARIATEUR DELTA PROGRAMMÉ	-	1	-	-	-				
8	12116805	VARIADOR DELTA PROGRAMADO	PROGRAMMED DELTA INVERTER	VARIATEUR DELTA PROGRAMMÉ	-	-	1	-	-				
8	12225365	VARIADOR DELTA PROGRAMADO	PROGRAMMED DELTA INVERTER	VARIATEUR DELTA PROGRAMMÉ	-	-	1	-	-				
8	12225368	VARIADOR DELTA PROGRAMADO	PROGRAMMED DELTA INVERTER	VARIATEUR DELTA PROGRAMMÉ	-	-	1	-	-				
8	12214504	VARIADOR DELTA PROGRAMADO	PROGRAMMED DELTA INVERTER	VARIATEUR DELTA PROGRAMMÉ	-	-	1	-	-				
9	12024040	CONTACTOR 230V 50/60Hz 20A	230V 50/60Hz 20A CONTACTOR	CONTACTEUR 230V 50/60Hz 20A	2	2	2	-	-				
10	12024011	CONTACTOR 230V AC 16A 4via UL	230V AC 16A 4via UL CONTACTOR	CONTACTEUR 230V AC 16A 4A 4VO	1	1	1	-	-				
11	12131303	MODULO PROCESADOR GRABADO	RECORDED PROCESSOR MODULE	MODULE PROCESSEUR GRABÉ	1	1	1	-	-				
12	12128262	SENSOR DE PRESION 50mbar	50mbar PRESSURE SENSOR	CAPTEUR DE PRESSION 50mbar	1	1	1	-	-				
13	12024696	MICRORRUPTOR PUERTA	DOOR MICROSWITCH	MICRORUPTEUR PORTE	1	1	1	-	-				
14	12116823	TRANSFORMADOR 1N 50W 240V/1	1N 50W 240V/12V UL TRANSFORM	TRANSFORMATEUR 1N 50W 240V/	1	1	1	-	-				

REPUESTOS RECOMENDADOS / RECOMMENDED SPARE PARTS / PIÈCE DE RECHANGE RECOMMANDÉ

ITEM	REF.	DENOMINACIÓN	DENOMINATION	DÉNOMINATION	LR-11 TP2	LR-14 TP2	LR-18 TP2	LR-25 TP2	LR-35 TP2		HASTA / UNTIL / JUSQU'À	DESDE / FROM / DEPUIS	OBSERVACIONES / NOTES / OBSERVATIONS
28	12023921	ELECTROVALVULA 3 VIAS	3 WAY SOLENOID VALVE	ELECTROVANNE 3 VOIES	1	1	1	-	-				LÁMINA E / E DRAWING / PLAN E
29	12025161	ELECTROVALVULA SIMPLE	SIMPLE SOLENOID VALVE	ELECTROVANNE SIMPLE	1	1	1	-	-				
30	12023794	ELECTROVALVULA 2 VIAS	2 WAY SOLENOID VALVE	ELECTROVANNE 2 VOIES	2	2	2	-	-				
A1	12120814	TARJETA AUXILIAR TP	TP AUXILIARY BOARD	CARTE AUXILIARE TP	1	1	1	-	-				
B1	12151431	CONTROL TARJETA 230V AC 50/60	230V AC 50/60Hz 1REL BOARD CO	CONTRÔLE CARTE 230V AC 50/60	1	1	1	-	-				
1	12157588	DISPLAY TP 7"	7" TP DISPLAY	DISPLAY TP 7"	-	-	-	1	1				LÁMINA F / F DRAWING / PLAN F
3	12120235	SETA DE EMERGENCIA	EMERGENCY STOP BUTTON	BOUTON D'ARRÊT D'URGENCE	-	-	-	1	1				
4	12120238	SOPORTE SETA EMERGENCIA	EMERGENCY STOP SUPPORT	SUPPORT BOUTON D'ARRÊT D'UR	-	-	-	1	1				
5	12120237	PULSAD. 250V AC 16A 1VIA 2POS	1250V AC 16A 1WAY 2POS UL SWIT	BOUTON 250V AC 16A 1VOIE 2POS	-	-	-	1	1				
6	12168823	TARJETA PRINCIPAL TP2	TP2 MAIN BOARD	CARTE PRINCIPALE TP2	-	-	-	1	1				
7	12133373	CABLE USB MACHO-HEMBRA	USB WIRE MALE-FEMALE	CÂBLE MÂLE-FEMELLE	-	-	-	1	1				
8	12225365	VARIADOR DELTA PROGRAMADO	PROGRAMMED DELTA INVERTER	VARIATEUR DELTA PROGRAMMÉ	-	-	-	1	-				
8	12214507	VARIADOR DELTA PROGRAMADO	PROGRAMMED DELTA INVERTER	VARIATEUR DELTA PROGRAMMÉ	-	-	-	1	-				
8	12119402	VARIADOR DELTA PROGRAMADO	PROGRAMMED DELTA INVERTER	VARIATEUR DELTA PROGRAMMÉ	-	-	-	-	1				
8	12131830	VARIADOR DELTA PROGRAMADO	PROGRAMMED DELTA INVERTER	VARIATEUR DELTA PROGRAMMÉ	-	-	-	-	1				
8	12226305	VARIADOR DELTA PROGRAMADO	PROGRAMMED DELTA INVERTER	VARIATEUR DELTA PROGRAMMÉ	-	-	-	-	1				
8	12226306	VARIADOR DELTA PROGRAMADO	PROGRAMMED DELTA INVERTER	VARIATEUR DELTA PROGRAMMÉ	-	-	-	-	1				
9	12041014	CONTACTOR 230V AC 40A 4vía UL	230V AC 40A 4WAY UL CONTACTC	CONTACTEUR 230V AC 40A 4VOIE	-	-	-	2	2				
10	12024011	CONTACTOR 230V AC 16A 4vía UL	230V AC 16A 4WAY UL CONTACTC	CONTACTEUR 230V AC 16A 4VOIE	-	-	-	1	1				
11	12131303	MODULO PROCESADOR GRABAD	RECORDED PROCESSOR MODULE	MODULE PROCESSEUR GRAVÉ	-	-	-	1	1				
12	12128262	SENSOR DE PRESION 50mbar	50mbar PRESSURE SENSOR	CAPTEUR DE PRESSION 50mbar	-	-	-	1	1				
12	12024696	MICRORRUPTOR PUERTA	DOOR MICROSWITCH	MICRORUPTEUR PORTE	-	-	-	1	1				
13	12116823	TRANSFORMADOR 1N 50W 240V/1	1N 50W 240V/12V UL TRANSFORM	TRANSFORMATEUR 1N 50W 240V/	-	-	-	1	1				
28	12023921	ELECTROVALVULA 3 VIAS	3 WAY SOLENOID VALVE	ELECTROVANNE 3 VOIES	-	-	-	1	1				
29	12025161	ELECTROVALVULA SIMPLE	SIMPLE SOLENOID VALVE	ELECTROVANNE SIMPLE	-	-	-	1	1				
30	12023794	ELECTROVALVULA DOBLE	DOUBLE SOLENOID VALVE	ELECTROVANNE DOUBLE	-	-	-	2	-				
30	12023551	ELECTROVALVULA SIMPLE	SIMPLE SOLENOID VALVE	ELECTROVANNE SIMPLE	-	-	-	-	3				
31	12024622	ELECTROVALVULA SIMPLE	SIMPLE SOLENOID VALVE	ELECTROVANNE SIMPLE	-	-	-	-	3				
34	12024106	VENTILADOR 230V AC 1N 36kW	FAN 230V AC 1N 36kW	VENTILATEUR 230V AC 1N 36kW	-	-	-	1	1				
A1	12120814	TARJETA AUXILIAR TP	TP AUXILIARY BOARD	CARTE AUXILIARE TP	-	-	-	1	1				
B1	12151431	CONTROL TARJETA 230V AC 50/60	230V AC 50/60Hz 1REL BOARD CO	CONTRÔLE CARTE 230V AC 50/60	-	-	-	1	1				



12123442 Rev 04

Simb / LENG		ESPAÑOL	ENGLISH	FRANÇAIS
1 ...8	=	Puntos conexión dosificadores.	Feeder connection points	Points raccordement doseurs
1 , e3	=	Electro válvula Prelavado.	Pre-wash electrically operated valve	Électrovanne Prélavage
2	=	Dosificador Lavado	Wash feeder	Doseur Laver
3 , e5	=	Electro válvula Lejía.	Bleach electrically operated valve.	Électrovanne Eau de Javel
4, e6	=	Electro válvula Suavizante.	Fabric softener electrically operated valve	Électrovanne Assouplissant
5 , e12	=	Dosificador Neutralizante.	Neutralizer feeder	Doseur Neutralisant
6	=	Dosificador jabon liquido.	Liquid soap feeder	Doseur lessive liquide
7,8,13,14,15,16,17,18	=	Dosificador aditivos.	Additive feeder	Doseur additifs
9 - 10	=	Lavadora Ocupada	Washer Busy	Laveuse Occupé
11 - 12	=	Entrada moneda	Coin inputs	Entrées Monnaies
BD1, BD2	=	Bomba de Desague	Drain Pump	Pompe de vidange
Bt1, Bt2, Bt3	=	Bomba de vaciado de tanque externo W REC	Drain Pump external tank W REC	Pompe de vidange de réservoir externe W REC
C1, C2, C3, C4, C5	=	Condensador	Capacitor	Condensateur
CT	=	Contacto Calentamiento	Heating Contactor	Contacteur Chauffe
CRP	=	Circuito Retardo Apertura de Puerta	Delay circuit Door Open	Le circuit de retard d'ouverture de porte
D.T.	=	Display/Teclado	Display/Keyboard	Écran/Clavier
e1	=	Electro válvula agua Fria.	Cold water electrically operated valve	Électrovanne eau Froide
e11	=	Electro válvula Vapor.	Steam electrically operated valve	Électrovanne Vapeur
e2	=	Electro válvula agua Caliente	Hot water electrically operated valve	Électrovanne eau Chaude
e4	=	Electro válvula Lavado agua Fria	Cold water Washing electrically operated valve	Électrovanne lavage à l'eau froide
e41	=	Electro válvula Lavado agua Caliente	Hot water Washing electrically operated valve	Électrovanne lavage à l'eau chaude
e7	=	Electro válvula agua Descalcificada	Delimed water electrically operated valve	Électrovanne eau Adoucie
EB	=	Electro válvula de aire Basculacion Trasera	Air Valve of the Back Tilting	Soupape à air de l'inclinaison arrière
EF	=	Electro válvula de aire Basculacion Frontal	Air Valve of the Front Tilting	Soupape à air de l'inclinaison avant
EP	=	Electroimán de Puerta	Door electric magnet	Électro-aimant de Porte
F	=	Fusible.	Fuse	Fusible
FA	=	Fuente Alimentacion	Power Supply	Source De Courant
FI	=	Filtro de Interferencias.	Interference filter	Filtre Anti-parasites
G1, G2, G3, G4	=	Galgas para Pesaje	Gauges for Weighing	Jauges de peser
IB	=	Interruptor Basculacion Trasero del Mando.	Back Tilting Switch of Control	Commutateur de inclinaison arrière de commande
Icm	=	Interruptor de Servicio	Service Switch	Interrupteur de Service
Ides	=	Interruptor de desequilibrio.	Unbalance switch	Interrupteur de balourd
Idrch	=	Interruptor Rotacion a Derechas del Mando	Switch of Spins to the Right of Control	Commutateur des rotations à la droite de la commande
IE	=	Pulsador Parada de emergencia.	Emergency stop push button	Bouton-poussoir Arrêt d'urgence
IF	=	Interruptor Basculacion Frontal Mando.	Front Tilting Switch of Control	Front Tilting Switch of Contrôle
IG	=	Interruptor general.	Power On	Interrupteur général
IGS	=	Interruptor General de seguridad.	Disconnect Switch	interrupteur Général de sécurité
Iizq	=	Interruptor Rotacion a Izquierdas Mando	Switch of Left Spin of Control	Commutateur de rotation gauche de commande
Im	=	Sensor de movimiento	Stopped Motion Switch	Détecteur D'arrêt
Imv	=	Accionamiento de Movimiento / Mando	Drive Motion / Command	Mouvement de route / Command
IMo	=	Interruptor Monedero.	MMO Coin Input	Interrupteur Monnayeur
Ind	=	Sensor Inductivo	Inductive sensor	Capteur inductif
Ip	=	Interruptor puerta Cerrada.	Closed door switch	Interrupteur porte Fermée
Ipb	=	Interruptor puerta bloqueada.	Door lock switch	Interrupteur porte verrouillée
IPE 50	=	Control para pesaje	Weight control	Contrôler pour peser
Iremj	=	Interruptor de Remojo del Mando	Soaking Switch of Control	Commutateur de trempage de commande
Iv	=	Interruptor Vapor	Steam Switch	Commutateur de vapeur
M	=	Motor.	Motor	Moteur
MB	=	Interruptor seguridad Basculacion Trasero.	Back Tilting Hi-limit Switch	Interrupteur de sécurité arrière inclinable.
MF	=	Interruptor seguridad Basculacion Frontal.	Front Tilting Hi-limit Switch	Interrupteur de sécurité Frontale inclinable.
Mo	=	Monedero.	coin meter pwr 24vac	Porte-monnaie
N1, N2, N3	=	Interruptor de nivel W REC	Water Level Switch W REC	Interrupteur de niveau d'eau W REC
NTC	=	Sensor temperatura.	Temperature sensor	Capteur température
P, P2	=	Presostato Nivel de agua	Water Level Switch	Détecteur de niveau d'eau
PB	=	Presostato Basculacion Trasero	Back Tilting Air Presure Low-Limit	Pressostat inclinaison arrière
PF	=	Presostato Basculacion Frontal	Front Tilting Air Presure Low-Limit	Pressostat inclinaison Frontale
PRG	=	Circuito Programador.	Input/Output Board	Circuit Programmeur
PTC	=	PTC	PTC	PTC
R	=	Resistencia Homica	Ohmic resistance	Résistance ohmique
RG1, RG2	=	Contacto General	General Contactor	Contacteur général
Rm	=	Rele movimiento / Parada	Stopped Motion Relay	Relais Détecteur D'arrêt
Rmo	=	Rele de Monedero	Coin meter relay	Relais de Porte-monnaie
Rp	=	Rele puerta Cerrada.	Closed door Relay	Relais porte Fermée
Rpb	=	Rele puerta bloqueada.	Door lock Relay	Relais porte verrouillée
RT	=	Resistencia Calentamiento.	Heating Elements	Résistance Chauffe
Tm	=	Térmico de Motor.	Motor Thermal Overload	Thermique du Moteur
Trf	=	Transformador	Transformer	Transformateur
Trf s/N	=	Transformador Versión sin Neutro.	Transformer Version without Neutral	Transformateur Version sans Neutre
Tsc	=	Termostato seguridad calentamiento	Hi-limit Thermostat	Thermostat Limiteur
VAC1, VAC2	=	Válvula Vaciado	Drain Valve	Vanne Vidange
VE, VE1, VE2	=	Ventilador.	Fan	Ventilateur
VF	=	Convertidor de Frecuencia.	Variable Frequency Drive	Convertisseur de Fréquence
VM	=	Ventilador Motor.	Fan motor	Ventilateur Moteur
VR1, VR2, VR3	=	Valvula Llenado del tanque externo W REC	Valve filling external tank W REC	Vanne de remplissage de réservoir externe W REC
Vt1, Vt2, Vt3	=	Valvula Vaciado de tanque externo W REC	Drain Valve external tank W REC	Vanne de vidange de réservoir externe W REC
COLOR	=	COLORES	COLOUR	COULEURS
BLK, bk, n	=	Negro	Black	Noir
BLU, bl, a	=	Azul	Blue	Bleu
BRN, bn, m	=	Marrón	Brown	Marron
GRN, gn, ve	=	Verde	Green	Vert
GRY, gy, g	=	Gris	Grey	Gris
ORG, or, na	=	Naranja	Orange	Orange
PNK, pk, rs	=	Rosa	Pink	Rose
PRP, pr, vi	=	Violeta	Purple	Violet
RED, rd, r	=	Rojo	Red	Rouge
WHT, wh, b	=	Blanco	White	Blanc
YEL, yw, am	=	Amarillo	Yellow	Jaune
YEL/GRN, am/ve	=	Amarillo/verde	Yellow / green	Jaune / vert
			L 41, L43	12023075 REV 01