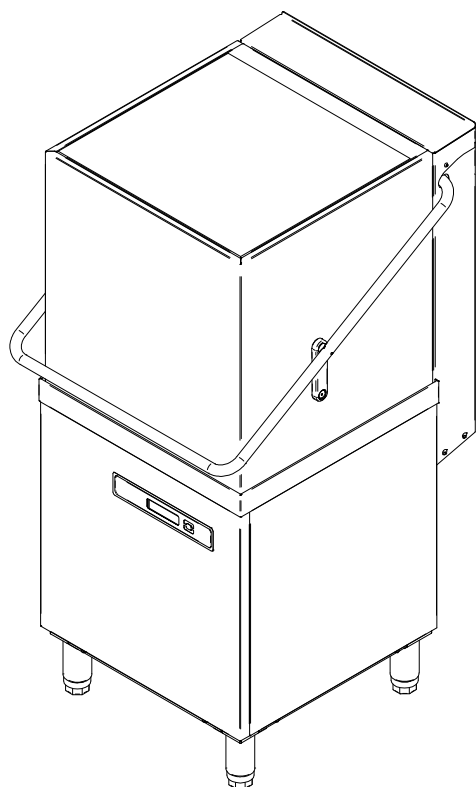


LAVAVAJILLAS DE CAPOTA HOOD TYPE DISHWASHERS

MODELOS / MODELS

CO-110 50 Hz	I9073548
CO-110 B 50 Hz	I9075270
CO-110 DD 50 Hz	I9075271
CO-110 B DD 50 Hz	I9075272
CO-110 HRS 50 Hz	I9075016
CO-110 HRS B DD 50 Hz	I9075273
CO-110 60 Hz	I9075029
CO-110 B 60 Hz	I9075274
CO-110 DD 60 Hz	I9075275
CO-110 B DD 60 Hz	I9075276
CO-110 HRS 60 Hz	I9075040
CO-110 HRS B DD 60 Hz	I9081101
CO-142 50 Hz	I9073919
CO-142 B 50 Hz	I9075277
CO-142 DD 50 Hz	I9075278
CO-142 B DD 50 Hz	I9075279
CO-142 B DD AU 50 Hz	I9075280
CO-142 HRS 50 Hz	I9075041
CO-142 HRS DD 50 Hz	I9075281
CO-142 HRS B DD 50 Hz	I9075282
CO-142 HRS B DD AU 50Hz	I9075284
CO-142 60 Hz	I9075042
CO-142 B 60 Hz	I9075285
CO-142 DD 60 Hz	I9075286
CO-142 B DD 60 Hz	I9075287
CO-142 HRS 60 Hz	I9075043
CO-142 HRS B DD 60 Hz	I9081120

COP-144 50 Hz	I9073920
COP-144 B 50 Hz	I9075288
COP-144 DD 50 Hz	I9075289
COP-144 B 200V 50 Hz	I9081897
COP-144 B DD 50 Hz	I9075290
COP-144 HRS 50 Hz	I9075044
COP-144 HRS B DD 50 Hz	I9075291
COP-144 60 Hz	I9075045
COP-144 B 60 Hz	I9075292
COP-144 B 200V 60 Hz	I9081122
COP-144 DD 60 Hz	I9075293
COP-144 B DD 60 Hz	I9075294
COP-144 HRS 60 Hz	I9075046
COP-144 HRS B DD 60 Hz	I9081123
COP-144 S 50 Hz	I9076174
COP-144 B S 50 Hz	I9076175
COP-144 DD S 50 Hz	I9076176
COP-144 B DD S 50 Hz	I9076177
COP-144 HRS S 50 Hz	I9076178
COP-144 HRS DD S 50 Hz	I9076179
COP-144 HRS B DD S 50 Hz	I9076180
AD-125 50 Hz	I9073291
AD-125 SOFT 50 Hz	I9075295
AD-125 SOFT HRS 50 Hz	I9074195
AD-125 HRS 50 Hz	I9075296
AD-125 HRS AU 50 Hz	I9075297
AD-125 60 Hz	I9075047
AD-125 SOFT 60 Hz	I9075298
AD-125 SOFT HRS 60 Hz	I9075048
AD-125 HRS 60 Hz	I9075299
AD-125 ECO 50Hz	I9075300
AD-125 ECO 60Hz	I9075301

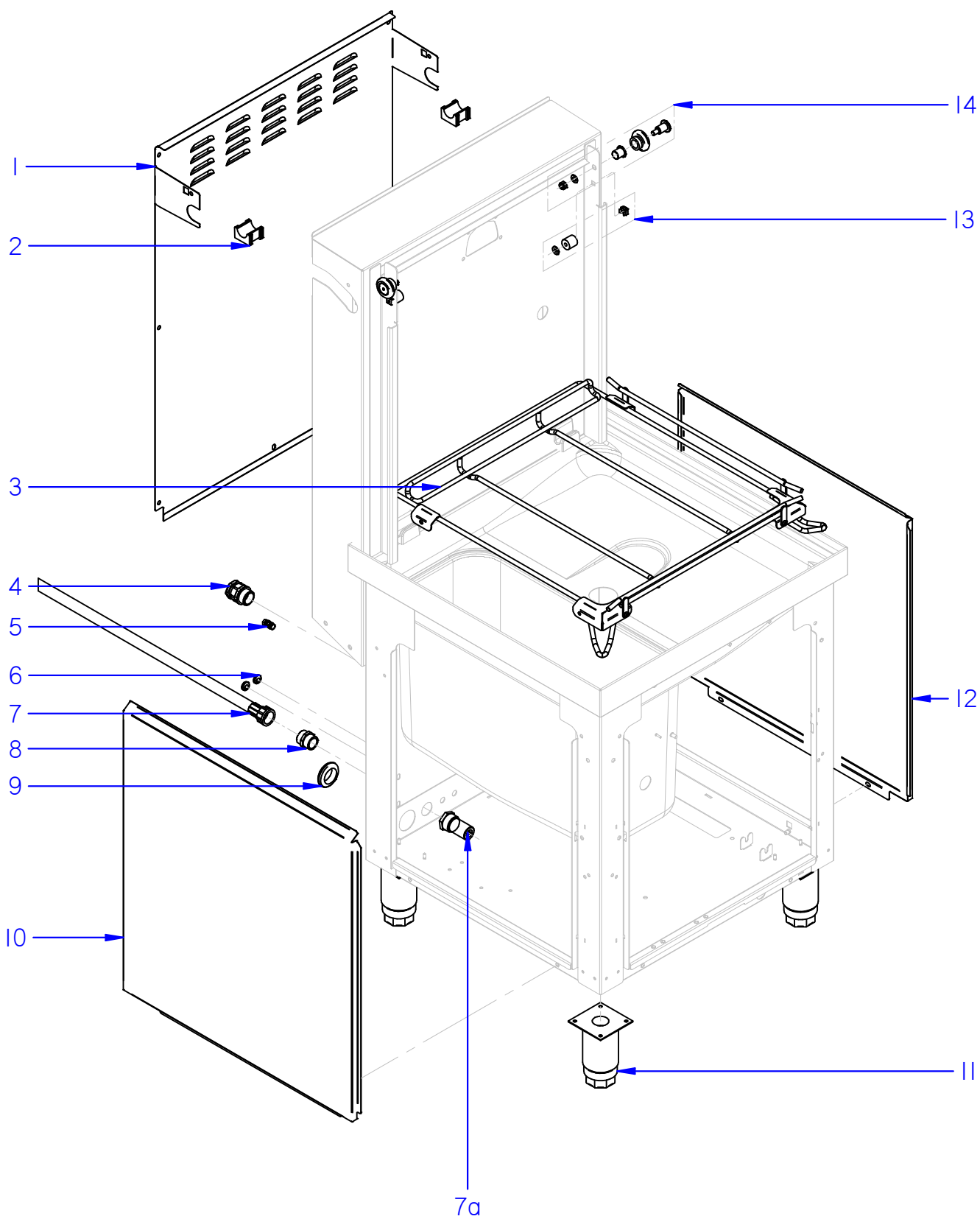


Despiece técnico CO-110-142; COP-144; AD-125 /
Spare Parts CO-110-142; COP-144; AD-125

SEPTIEMBRE 2020 SEPTEMBER Revisado
ENERO 2021 JANUARY

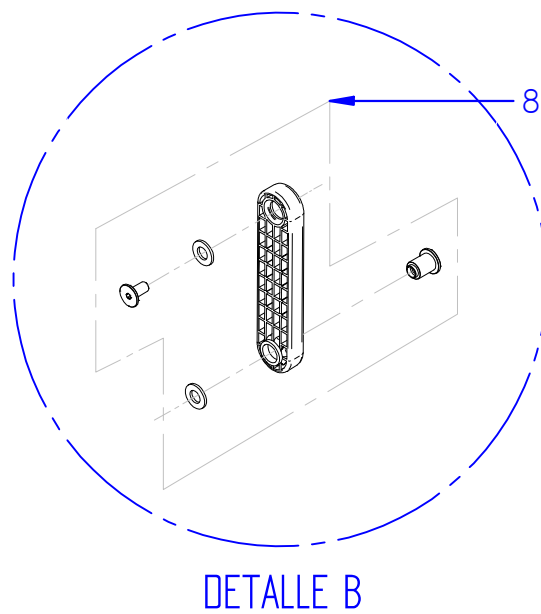
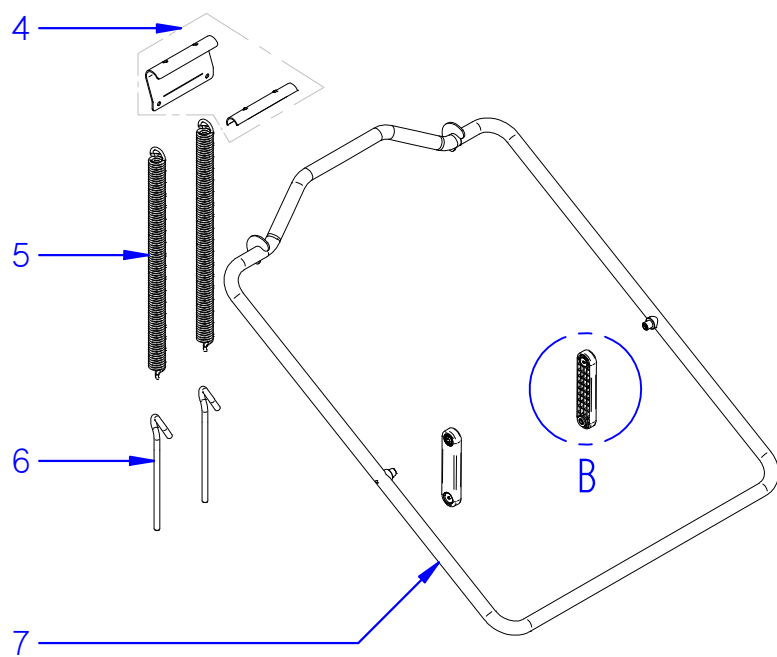
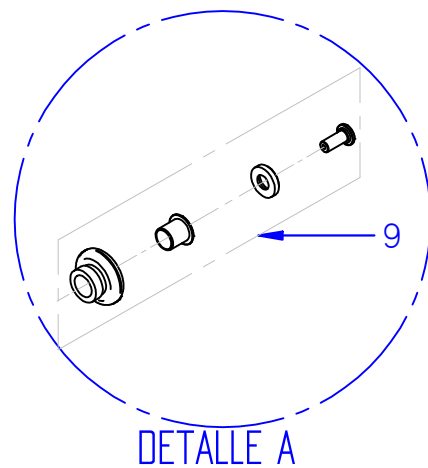
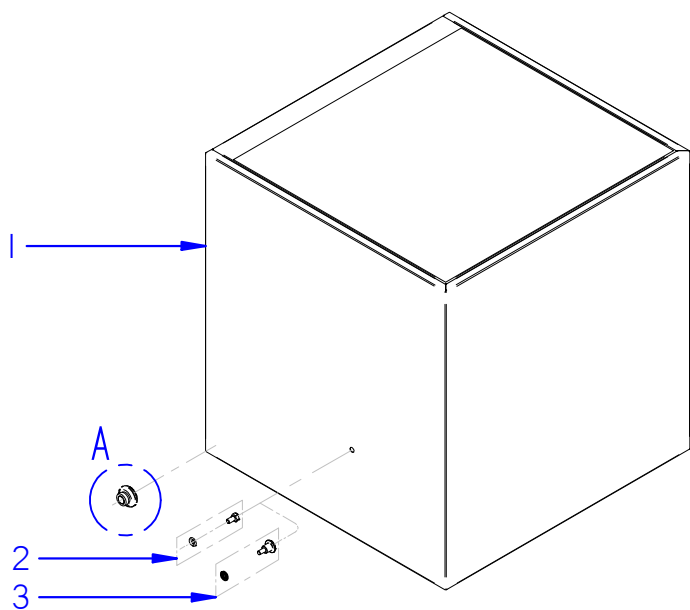


FAGOR INDUSTRIAL



Fecha	Firma	I10_I42_I44_I25	Página	
01-09-2020	I. Rodriguez	MUEBLE / UNIT		

[illegible]



Fecha	Firma	I10_I42_I44_I25	Página	
01-09-2020	I. Rodriguez	CAPOTA / HOOD		

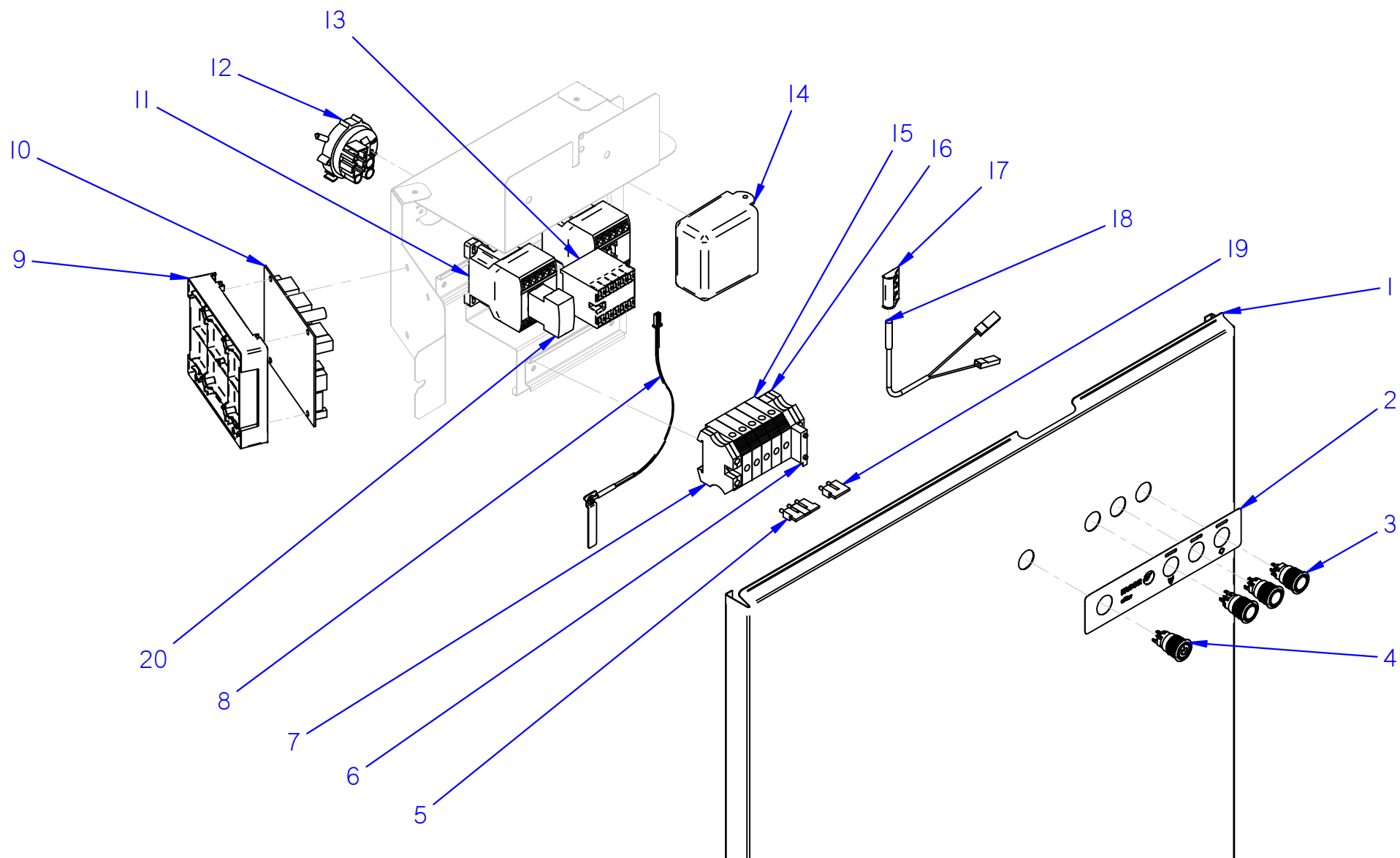
**APARATO /
APPLIANCE**

LAVAVAJILLAS / DISHWASHER

ZONA / ZONE

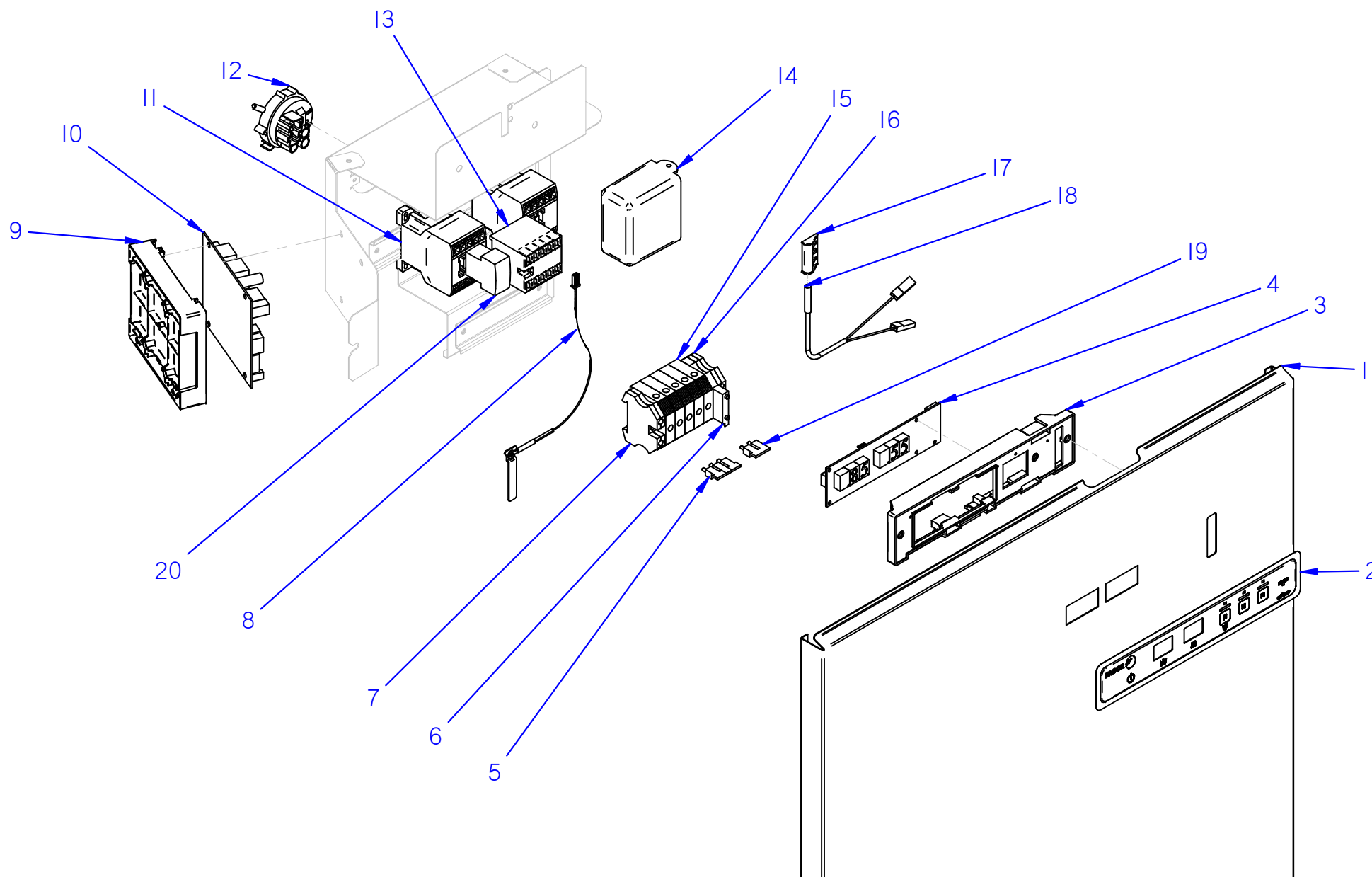
B - CAPOTA / HOOD

[illegible]



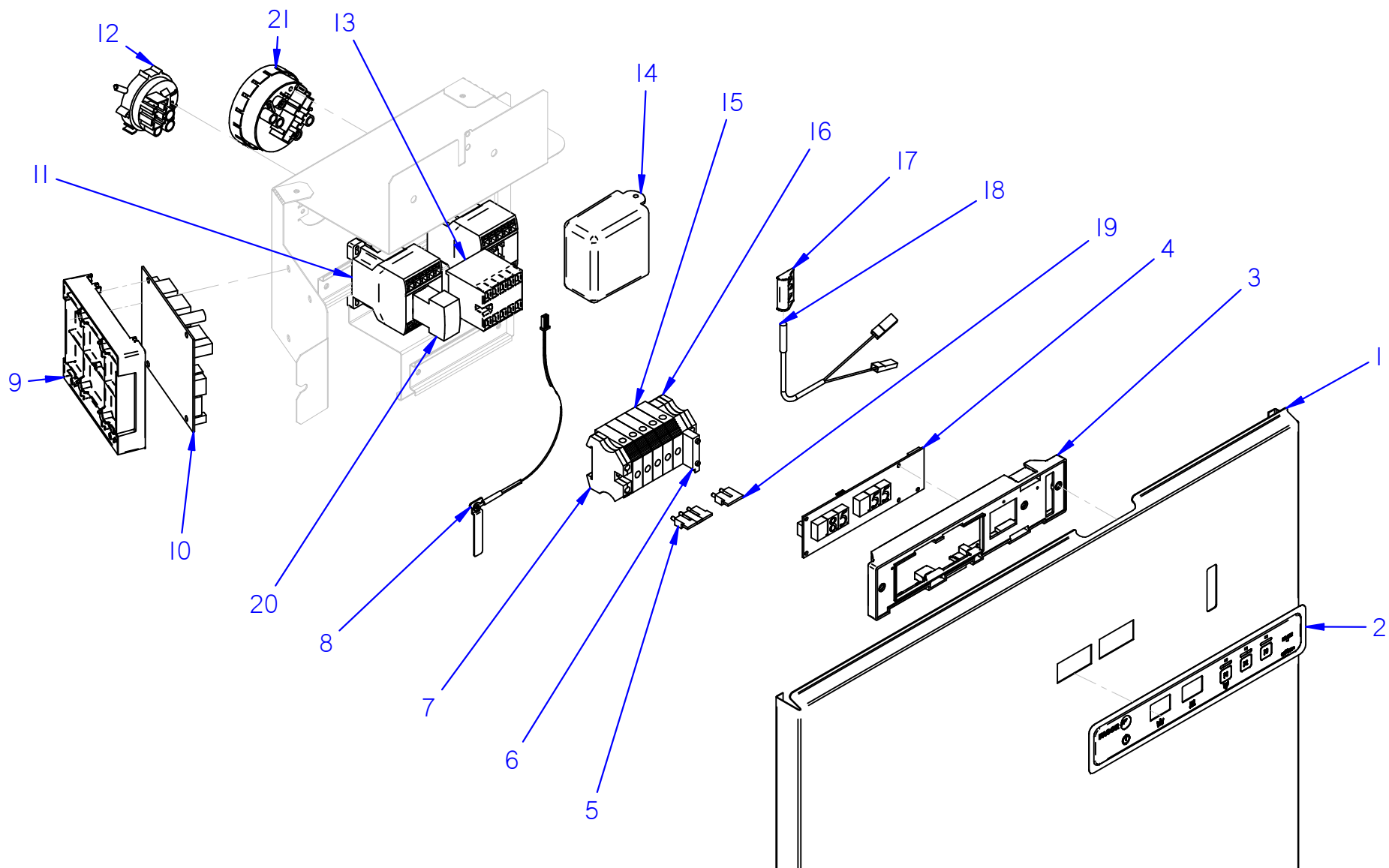
Fecha	Firma	110	Página	
01-06-2020	I. Rodriguez	PORTAMANDOS / CONTROL HOLDER		

[illegible]



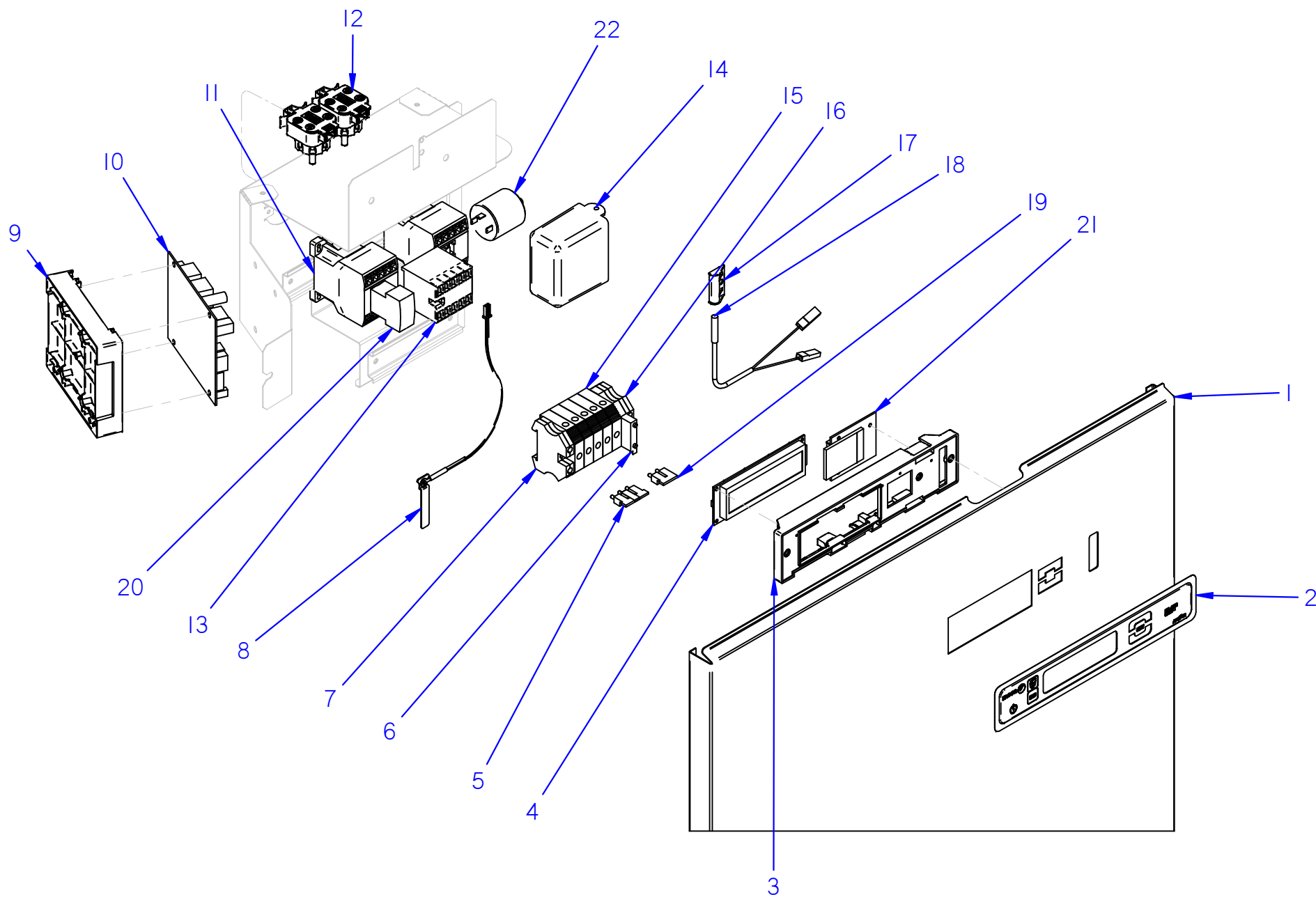
Fecha	Firma	142	Página	
01-09-2020	I. Rodriguez	PORTAMANDOS / CONTROL HOLDER		

**Despiece técnico CO_110-142; COP-144; AD-125 /
Spare Parts CO_110-142; COP-144; AD-125**



Fecha	Firma	144	Página	
01-09-2020	I. Rodriguez	PORTAMANDOS / CONTROL HOLDER		

[illegible]



Fecha	Firma	125	Página	
01-09-2020	I. Rodriguez	PORTAMANDOS / CONTROL HOLDER		

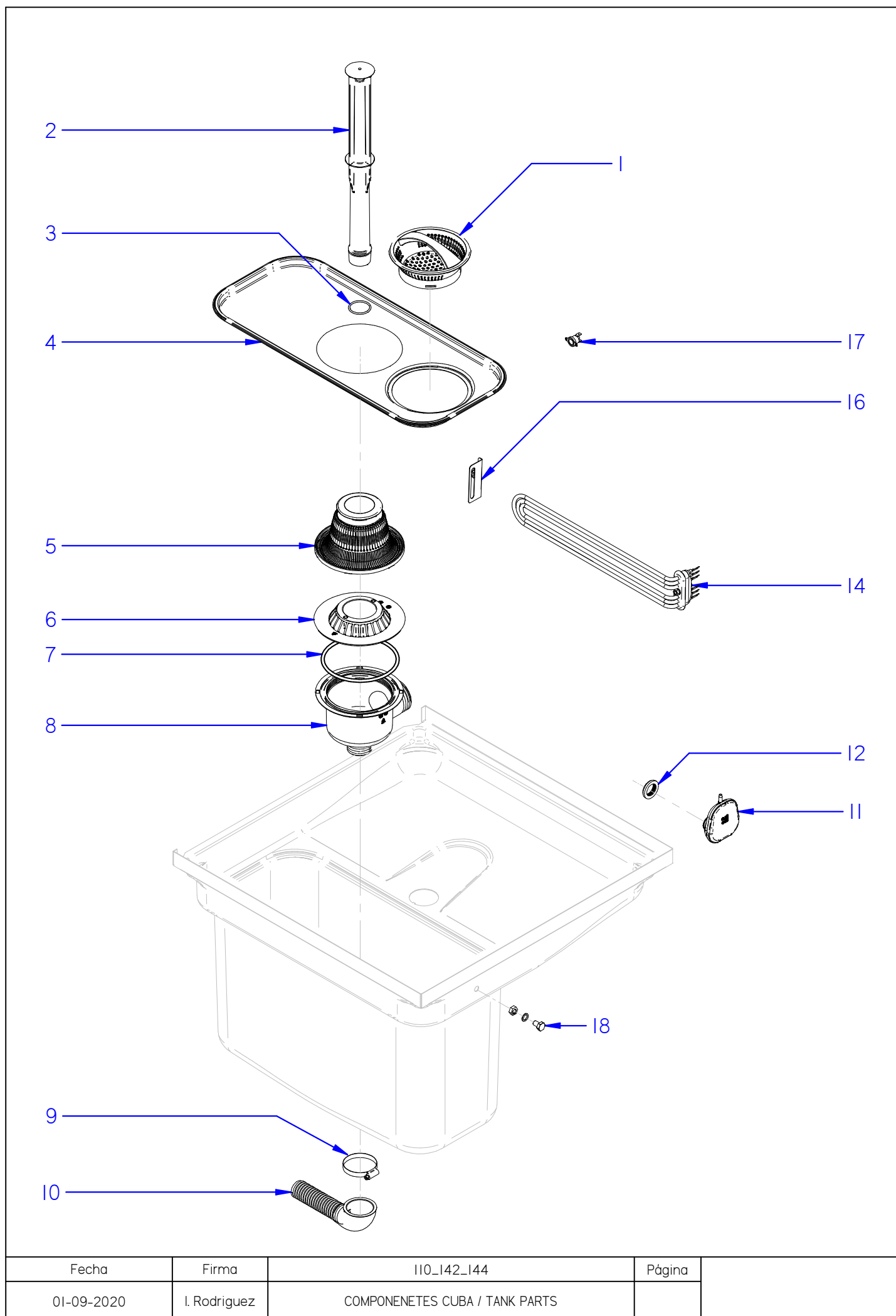
**APARATO /
APPLIANCE**

LAVAVAJILLAS / DISHWASHER

ZONA / ZONE**PORTAMANDOS (AD) / CONTROL HOLDER (AD)**[illegible]

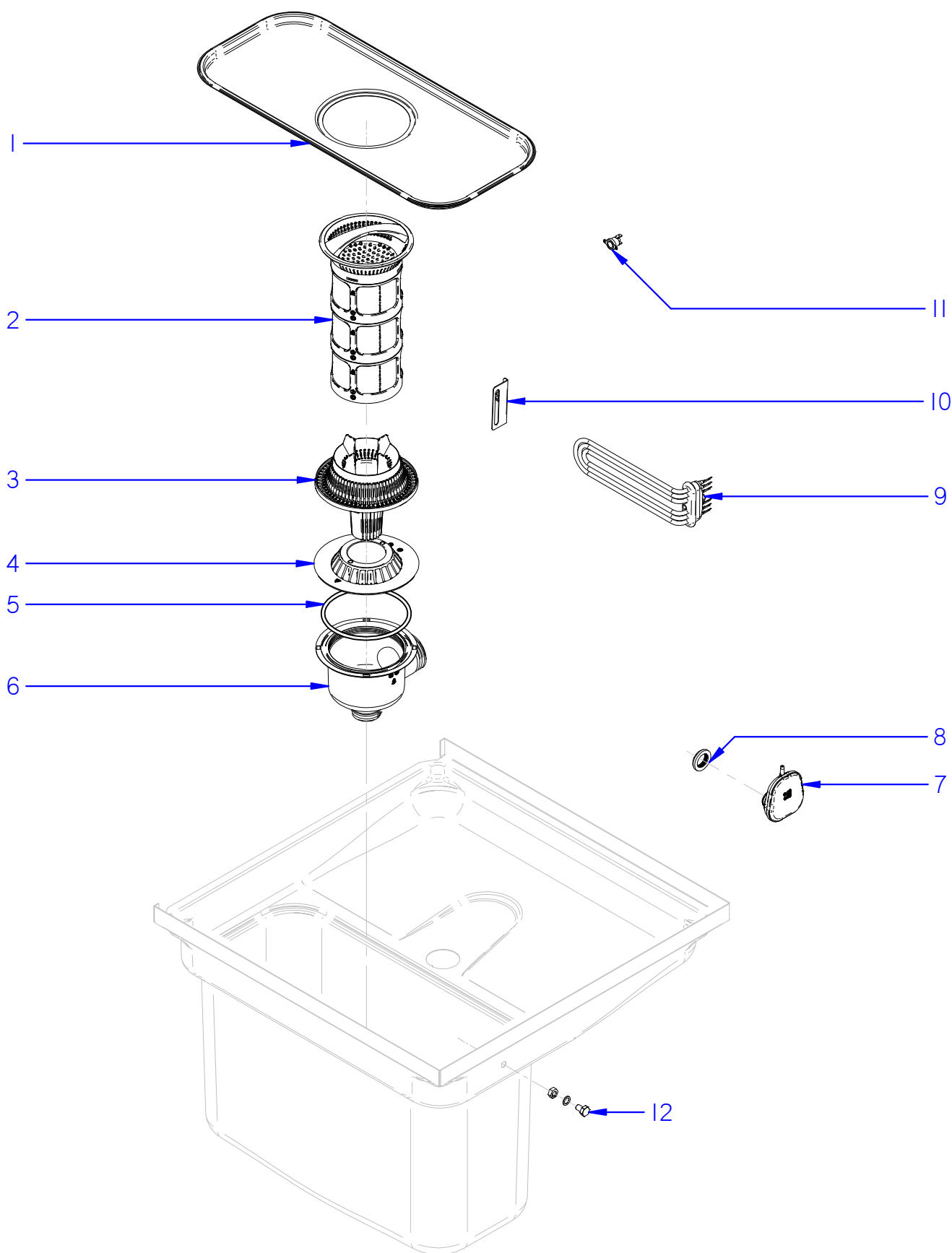
26	12990781	Z203009000-1	INTERRUPTOR MAGNÉTICO
----	----------	--------------	-----------------------

2



Fecha	Firma	I10_I42_I44	Página	
01-09-2020	I. Rodriguez	COMPONETES CUBA / TANK PARTS		

[illegible]

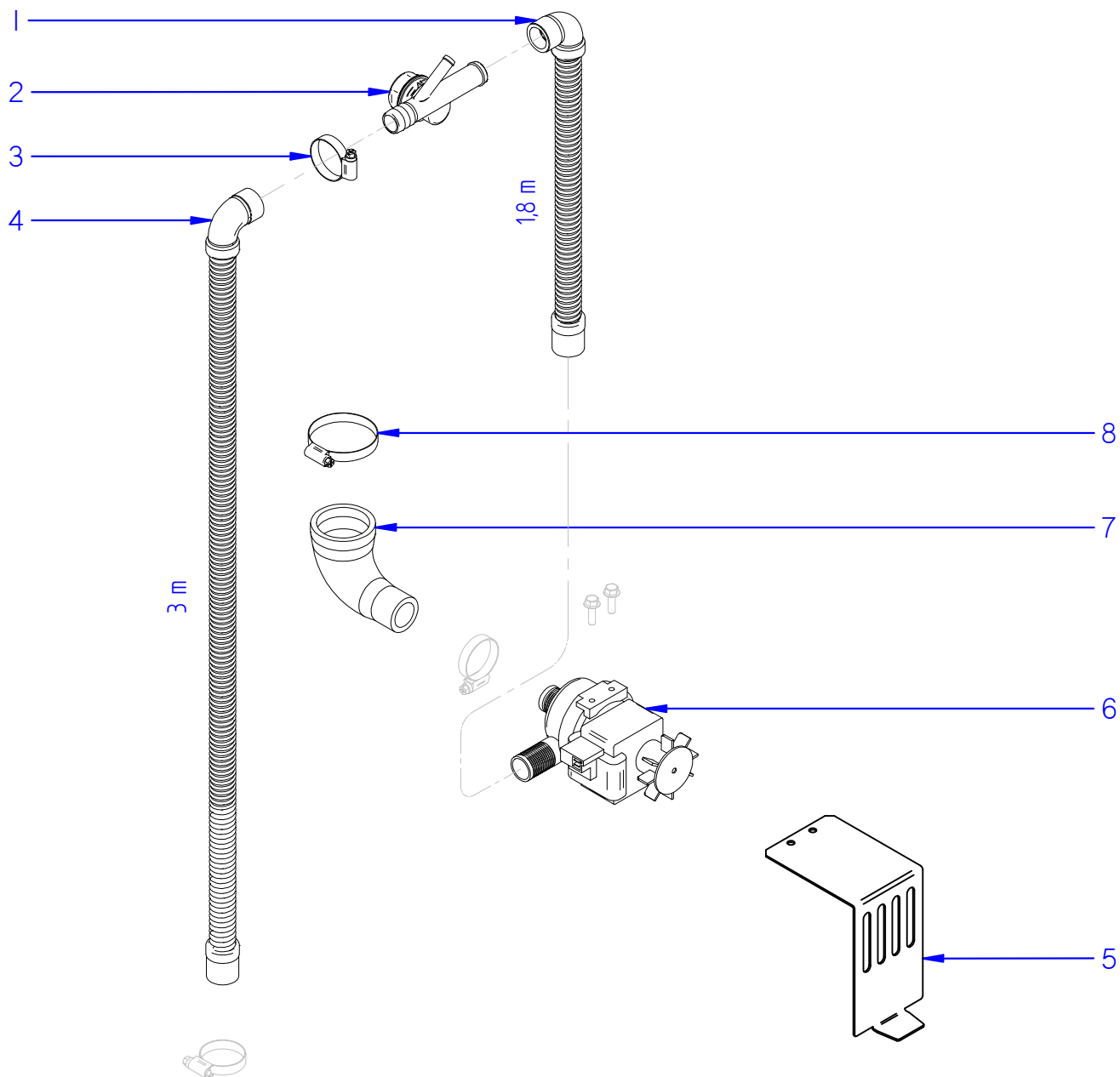


Fecha	Firma	I25	Página	
01-09-2020	I. Rodriguez	COMPONENTES CUBA / TANK PARTS		

**APARATO /
APPLIANCE**

LAVAVAJILLAS / DISHWASHER

ZONA / ZONE**COMPONENTES CUBA (AD) / TANK PARTS (AD)**[illegible]



Fecha	Firma	I25	Página	
01-9-2020	B. Alcantara	CONJUNTO DESAGÜE / DRAINAGE ASSEMBLY		

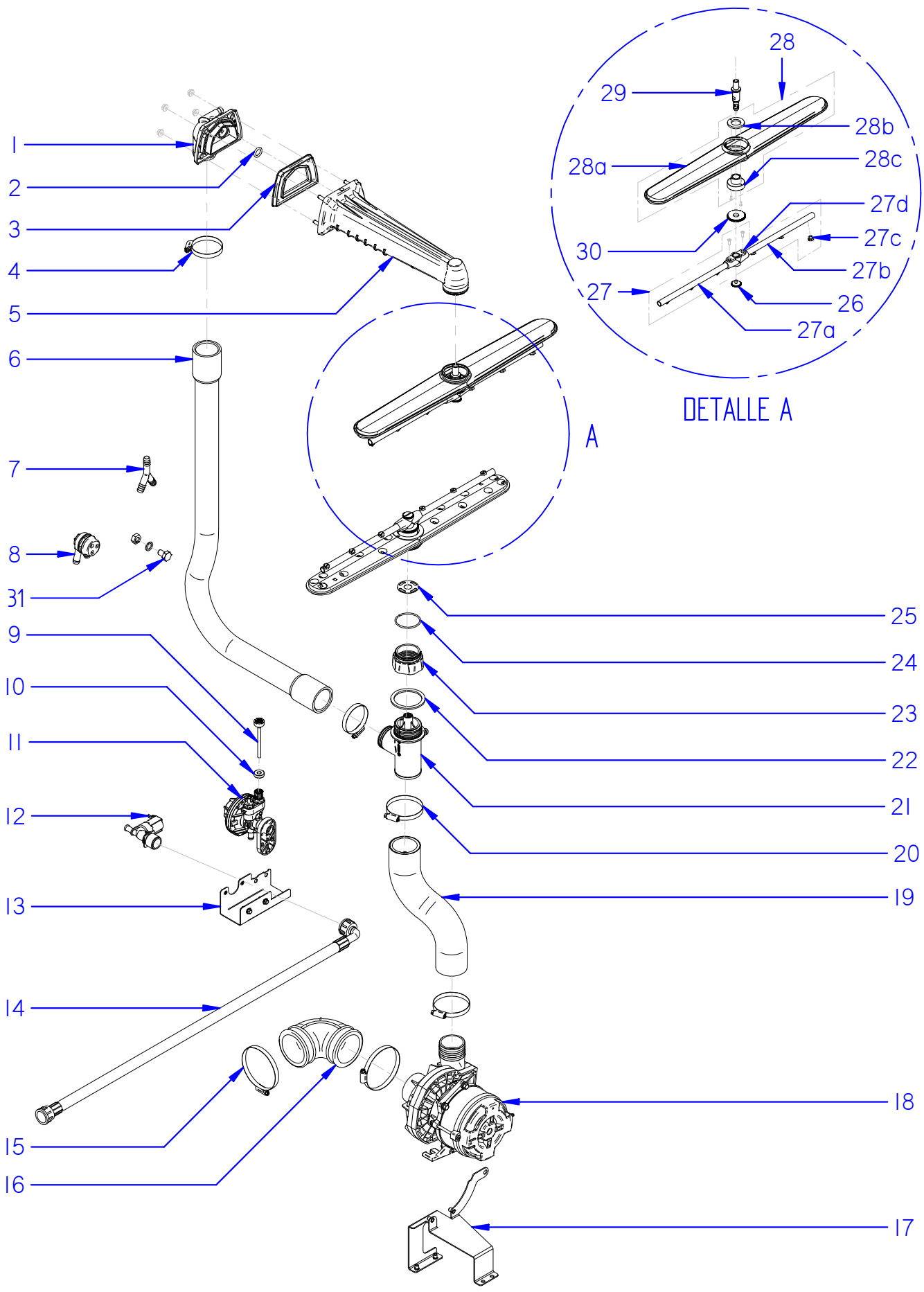
**APARATO /
APPLIANCE**

LAVAVAJILLAS / DISHWASHER

ZONA / ZONE

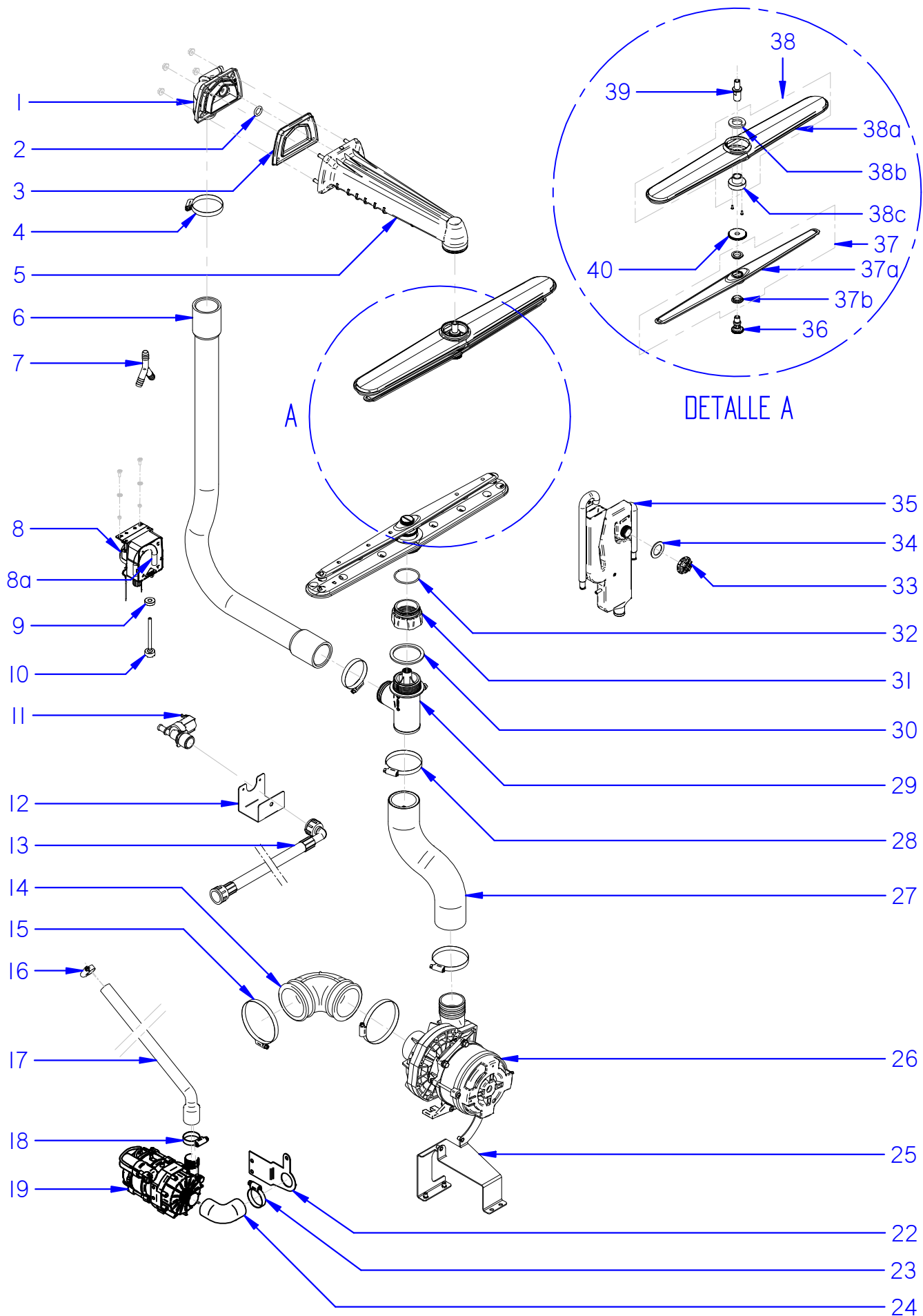
CONJUNTO DESAGÜE (AD) / DRAINAGE ASSEMBLY (AD)

[illegible]



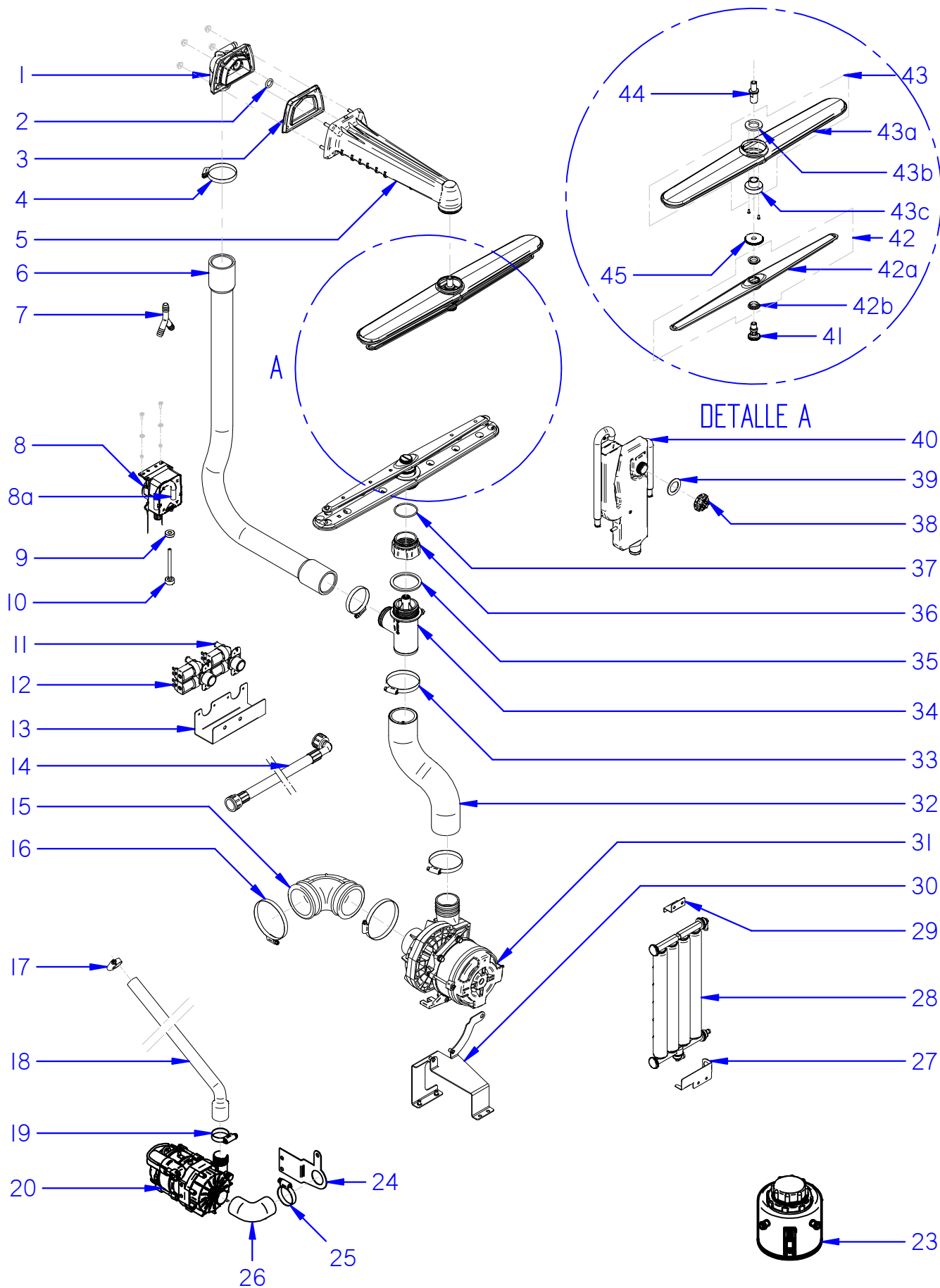
Fecha	Firma	110-142	Página	
01-09-2020	I. Rodriguez	CONJUNTO HIDRÁULICO / HYDRAULIC ASSEMBLY		

[illegible]



Fecha	Firma	I44_I25	Página	
01-09-2020	I. Rodriguez	CONJUNTO HIDRÁULICO / HYDRAULIC ASSEMBLY		

ITEM	CODIGO REFERENCE	DENOMINACIÓN	DENOMINATION	COP-144	COP-144 S	AD-125											RECOMENDADOS RECOMMENDED	HASTA UNTIL	DESDE SINCE	NOTAS / NOTES
1	12165982	CIERRE BRAZO CAPOTA	DISHWASHER ARM LOCK	1	1	1														
2	12049214	JUNTA TÓRICA 12.8-3-5	2.8-3-5 SEAL	1	1	1														
3	12048366	JUNTA BRAZO CAPOTA	DISHWASHER ARM SEAL	1	1	1														
4	12009962	ABRAZAD. Fe-Zn 40-60mm DIN3017	Fe-Zn 40-60mm DIN3017 CLAMP	2	2	2														
5	12265489	CONJUNTO BRAZO CAPOTA	DISHWASHER ARM ASSEMBLY	1	1	1														
6	12150548	CONDUCCIÓN RAMA SUPERIOR	TOP BRANCH PIPE	1	1	1														
7	12023511	RACORD EN Y	Y FORM RACORD	1	1	1														
8	12132254	DOSIF. PERISTÁLTICO ABRILLANTADOR	PERISTALTIC POLISHER DISPENSER	1	1	1														
8a	12132254	TUBO PERISTÁLTICO DOS. ABRILLANTADO	POLISHER DISP. PERISTALTIC TUBE	1	1	1														
9	12164632	PESO FILTRO	FILTER WEIGHT	1	1	1														
10	12265502	CONDUCTO ABRILLANTADOR Ø4x6	Ø4x6 POLISHER PIPE	1	1	1														
11	12219512	ELECTROVÁLVULA + REGULADOR 4L/min	ELECTROVALVE + 4L/min REGULATOR	1	1	1										X				
12	12225749	SOPORTE ELECTROVÁLVULA	ELECTROVALVE SUPPORT	1	1	1														
13	12161034	MANGUERA ENTRADA AGUA INTERIOR	INNER WATER INLET HOSE	1	1	1														
13	12115397	MANGUERA ENTRADA AGUA INTERIOR	INNER WATER INLET HOSE	1	1	1														solo modelos "AU" / "AU" models only
14	12139078	CONDUCTO ASPIRACIÓN	SUCTION PIPE	1	1	1														
15	12009914	ABRAZADERA DIN3017 W2 70-90L	DIN3017 W2 70-90L CLAMP	2	2	2														
16	12010036	ABRAZAD. Fe-Zn 12-22mm DIN3017	Fe-Zn 12-22mm DIN3017 CLAMP	1	1	1														
17	12046080	CONDUCTO IMPULSIÓN ACLARADO	RINSING IMPULSION PIPE	1	1	1														
18	12010023	ABRAZAD. Fe-Zn 20-32mm DIN3017	Fe-Zn 20-32mm DIN3017 CLAMP	1	1	1														
19	12187518	BOMBA ACLARADO 50Hz	50Hz RINSING PUMP	1	1	1										X				solo modelos 50Hz / 50Hz models only
19	12216217	BOMBA ACLARADO 60Hz	60Hz RINSING PUMP	1	1	1										X				solo modelos 60Hz / 60Hz models only
22	12238067	SOPORTE BOMBA ACLARADO	RINSING PUMP BRACKET	1	1	1														
23	12009997	ABRAZAD. Fe-Zn 25-40mm DIN3017	Fe-Zn 25-40mm DIN3017 CLAMP	2	2	2														
24	12041928	CONDUCTO CALDERIN-BOMBA	BOILER-RINSING PUMP PIPE	1	1	1														
25	12225194	SOPORTE MOTOBOMBA 60Hz	60Hz PUMP BRACKET	1	1	1														solo modelos 60Hz / 60Hz models only
26	12248885	ELECTROBOMBA 50Hz	ELECTRIC PUMP 50Hz	1	1	1										X				solo modelos 50Hz / 50Hz models only
26	12275066	ELECTROBOMBA 60Hz	ELECTRIC PUMP 60Hz	1	1	1										X				solo modelos 60Hz / 60Hz models only
27	12150482	CONDUCTO IMPULSIÓN	IMPULSION PIPE	1	1	1														
28	12009933	ABRAZADERA DIN3017 W2 50-70L	DIN3017 W2 50-70L CLAMP	2	2	2														
29	12265503	SOPORTE DISTRIBUIDOR	DISTRIBUTOR SUPPORT	1	1	1														
30	12163602	JUNTA SOPORTE DISTRIBUIDOR	DISTRIBUTOR SUPPORT SEAL	1	1	1														
31	12265504	ADAPTADOR RAMAS LAVADO	WASHING BRANCHES ADAPTOR	1	1	1														
32	12138664	ARANDELA ELÁSTICA	ELASTIC RETAINER	2	2	2														
33	12104339	TAPÓN TUERCA	NUT CAP	1	1	1														
34	12091122	JUNTA AIR BREAK	AIR BREAK SEAL	1	1	1														
35	12265541	AIR BREAK	AIR BREAK	1	1	1														
36	12171232	EJE ACLARADO RAMAS PLANAS	FLAT BRANCHES RINSING SHAFT	2	2	2														
37	12228948	DISTRIBUIDOR ACLARADO COMPLETO	COMPLETE RINSING DISTRIBUTOR	2	2	2														
37a	12102984	DISTRIBUIDOR ACLARADO	RINSING DISTRIBUTOR	2	2	2														
37b	12041628	PROTECTOR FUGAS	PROTECTOR	4	4	4														
38	12265505	DISTRIBUIDOR LAVADO COMPLETO	COMPLETE WASHING DISTRIBUTOR	2	2	2														
38a	12003421	DISTRIBUIDOR LAVADO	WASHING DISTRIBUTOR	2	2	2														
38b	12023674	ARANDELA AMARRE	CLAMPING RETAINER	2	2	2														
38c	12141336	CASQUILLO DISTRIBUIDOR	DISTRIBUTOR BUSHING	2	2	2														
39	12138392	EJE ALAVADO	WASHING SHAFT	2	2	2														
40	12171233	TUERCA ESPECIAL ACLARADO M12x1.5	M12x1.5 RINSING SPECIAL NUT	2	2	2														



Fecha	Firma	I25 SOFT	Página
01-09-2020	I. Rodriguez	CONJUNTO HIDRÁULICO (SOFT) / HYDRAULIC ASSEMBLY (SOFT)	

APARATO / APPLIANCE		LAVAVAJILLAS / DISHWASHER														ZONA / ZONE				CONJUNTO HIDRÁULICO (AD SOFT) / HYDRAULIC ASSEMBLY (AD SOFT)			
ITEM	CODIGO REFERENCE	DENOMINACIÓN	DENOMINATION	AD-125 SOFT												RECOMENDADOS RECOMMENDED	HASTA UNTIL	DESDE SINCE	NOTAS / NOTES				
1	12165982	CIERRE BRAZO CAPOTA	DISHWASHER ARM LOCK	1																			
2	12049214	JUNTA TÓRICA 12.8-3-5	2.8-3-5 SEAL	1																			
3	12048366	JUNTA BRAZO CAPOTA	DISHWASHER ARM SEAL	1																			
4	12009962	ABRAZAD. Fe-Zn 40-60mm DIN3017	Fe-Zn 40-60mm DIN3017 CLAMP	2																			
5	12265489	CONJUNTO BRAZO CAPOTA	DISHWASHER ARM ASSEMBLY	1																			
6	12150548	CONDUCCIÓN RAMA SUPERIOR	TOP BRANCH PIPE	1																			
7	12023511	RACORD EN Y	Y FORM RACORD	1																			
8	12132254	DOSIF. PERISTÁLTICO ABRILLANTADOR	PERISTALTIC POLISHER DISPENSER	1											X								
8a	12230391	TUBO PERISTÁLTICO DOS. ABRILLANTADO	POLISHER DISP. PERISTALTIC TUBE	1																			
9	12164632	PESO FILTRO	FILTER WEIGHT	1																			
10	12265502	CONDUCTO ABRILLANTADOR Ø4x6	Ø4x6 POLISHER PIPE	1																			
11	12217769	CONJUNTO ELECTROVÁLVULA REGEN.	REGEN. ELECTROVALVE ASSEMBLY	1											X								
12	12217768	CONJUNTO ELECTROVÁLVULA ENTRADA	INLET ELECTROVALVE ASSEMBLY	1											X								
13	12225770	SOPORTE ELECTROVÁLVULAS	ELECTROVALVES SUPPORT	1																			
14	12161034	MANGUERA ENTRADA AGUA INTERIOR	INNER WATER INLET HOSE	1																			
14	12115397	MANGUERA ENTRADA AGUA INTERIOR	INNER WATER INLET HOSE	1															solo modelos "AU" / "AU" models only				
15	12139078	CONDUCTO ASPIRACIÓN	SUCTION PIPE	1																			
16	12009914	ABRAZADERA DIN3017 W2 70-90L	DIN3017 W2 70-90L CLAMP	2																			
17	12010036	ABRAZAD. Fe-Zn 12-22mm DIN3017	Fe-Zn 12-22mm DIN3017 CLAMP	1																			
18	12041928	CONDUCTO CALDERIN-BOMBA	BOILER-RINSING PUMP PIPE	1																			
19	12010023	ABRAZAD. Fe-Zn 20-32mm DIN3017	Fe-Zn 20-32mm DIN3017 CLAMP	1																			
20	12187518	BOMBA ACLARADO 50Hz	50Hz RINSING PUMP	1											X				solo modelos 50Hz / 50Hz models only				
20	12216217	BOMBA ACLARADO 60Hz	60Hz RINSING PUMP	1											X				solo modelos 60Hz / 60Hz models only				
23	12244577	BOTE DE SALES COMPLETO	COMPLETE SALT CONTAINER	1											X								
24	12238067	SOPORTE BOMBA ACLARADO	RINSING PUMP SUPPORT	1																			
25	12009997	ABRAZAD. Fe-Zn 25-40mm DIN3017	Fe-Zn 25-40mm DIN3017 CLAMP	2																			
26	12136329	CONDUCTO ASPIRACIÓN BOMBA	RINSING PUMP SUCTION PIPE	1																			
27	12222762	SOPORTE INFERIOR DESCALCIFICADOR	SOFTENER BOTTOM SUPPORT	1																			
28	12024874	DESCALCIFICADOR 4 COLUMNAS	4 COLUMN SOFTENER	1											X								
29	12222761	SOPORTE SUPERIOR DESCALCIFICADOR	SOFTENER TOP SUPPORT	1																			
30	12225194	SOPORTE MOTOBOMBA 60Hz	60Hz PUMP SUPPORT	1															solo modelos 60Hz / 60Hz models only				
31	12248885	ELECTROBOMBA 50Hz	ELECTRIC PUMP 50Hz	1											X				solo modelos 50Hz / 50Hz models only				
31	12275066	ELECTROBOMBA 60Hz	ELECTRIC PUMP 60Hz	1											X				solo modelos 60Hz / 60Hz models only				
32	12150482	CONDUCTO IMPULSIÓN	IMPULSION PIPE	1																			
33	12009933	ABRAZADERA DIN3017 W2 50-70L	DIN3017 W2 50-70L CLAMP	2																			
34	12265503	SOPORTE DISTRIBUIDOR	DISTRIBUTOR SUPPORT	1																			
35	12163602	JUNTA SOPORTE DISTRIBUIDOR	DISTRIBUTOR SUPPORT SEAL	1																			
36	12265504	ADAPTADOR RAMAS LAVADO	WASHING BRANCHES ADAPTOR	1																			
37	12138664	ARANDELA ELÁSTICA	ELASTIC RETAINER	2																			
38	12104339	TAPÓN TUERCA	NUT CAP	1																			
39	12091122	JUNTA AIR BREAK	AIR BREAK SEAL	1																			
40	12265541	AIR BREAK	AIR BREAK	1																			
41	12171232	EJE ACLARADO RAMAS PLANAS	FLAT BRANCHES RINSING SHAFT	2																			

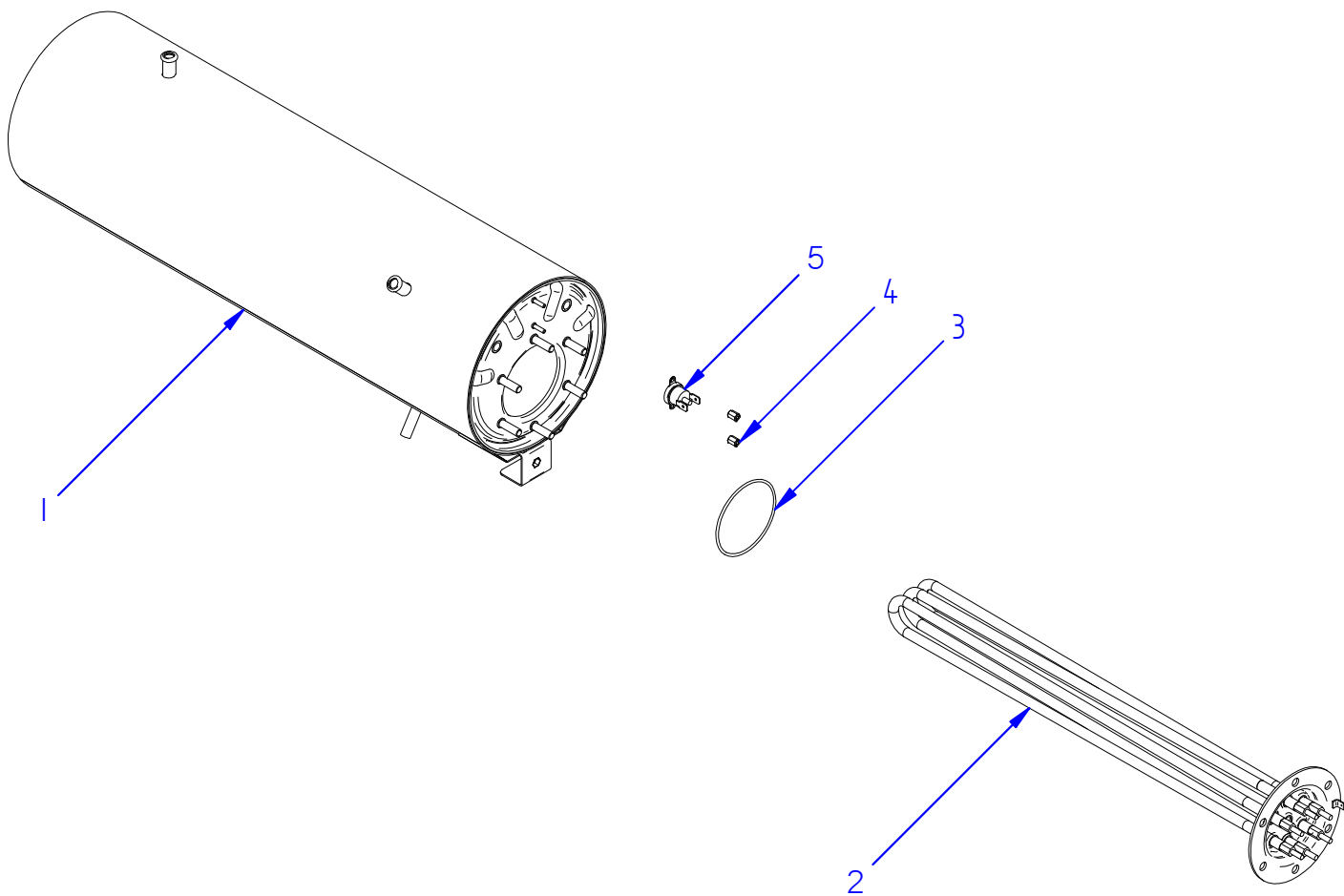
**APARATO /
APPLIANCE**

LAVAVAJILLAS / DISHWASHER

ZONA / ZONE

**CONJUNTO HIDRÁULICO (AD SOFT) / HYDRAULIC
ASSEMBLY (AD SOFT)**

[illegible]

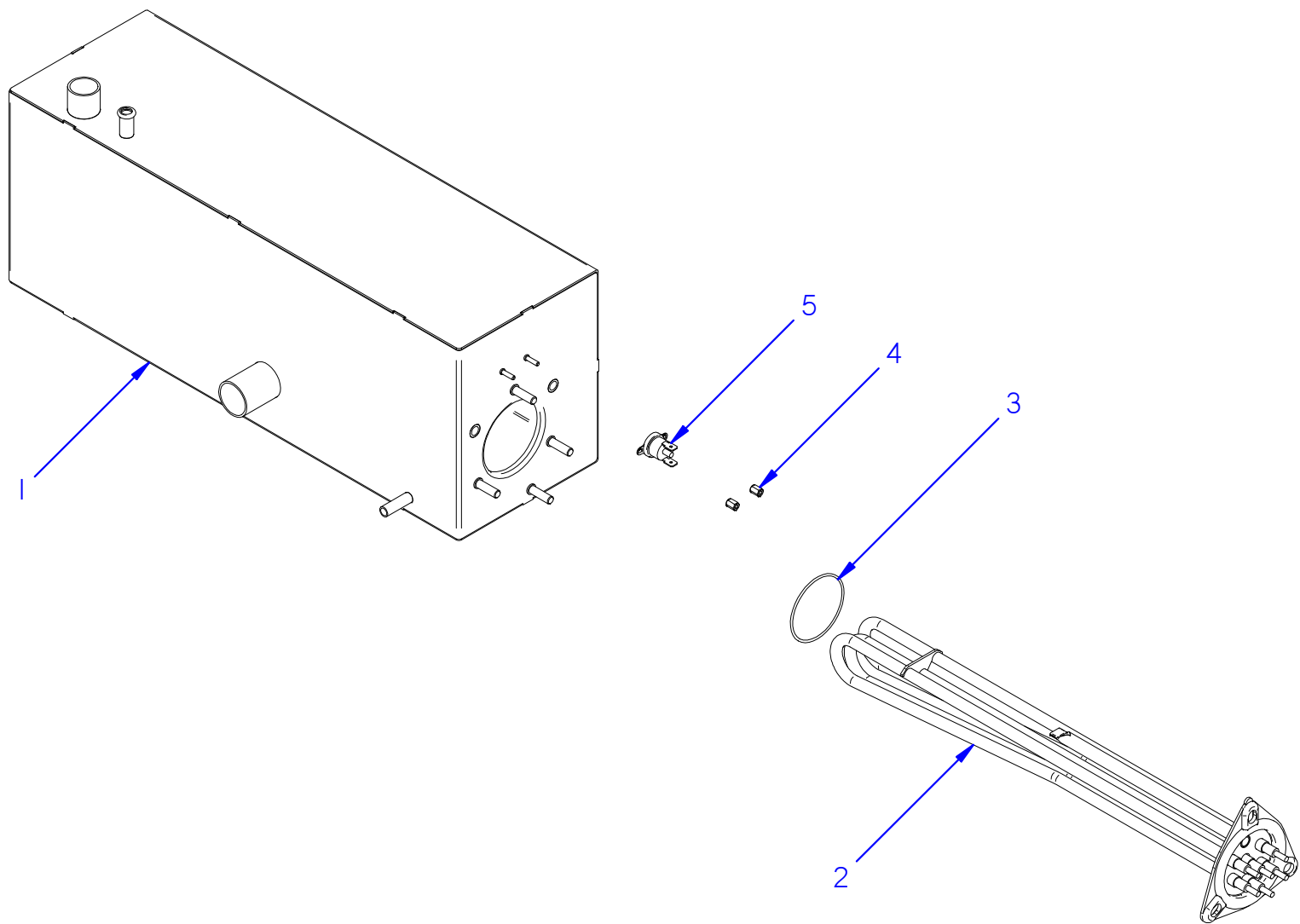


Fecha	Firma	110-142	Página	
01-06-2018	B. Alcantara	CALDERÍN / HEATER		

**APARATO /
APPLIANCE**

LAVAVAJILLAS / DISHWASHER

ZONA / ZONE**CALDERÍN (CO) / HEATER (CO)**[illegible]



Fecha	Firma	I44_I25	Página	
01-06-2018	B. Alcantara	CALDERÍN / HEATER		

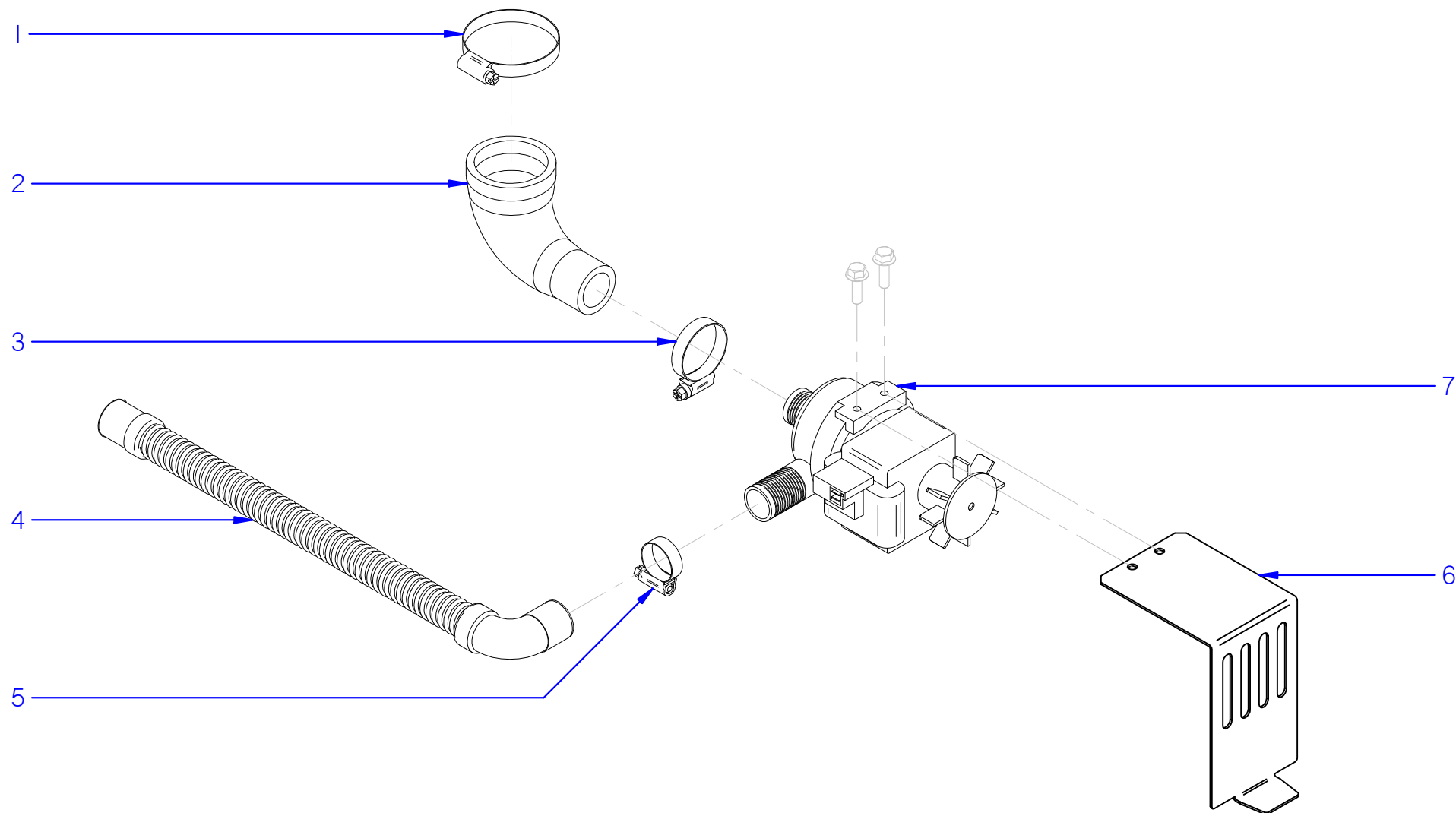
**APARATO /
APPLIANCE**

LAVAVAJILLAS / DISHWASHER

ZONA / ZONE

CALDERÍN (COP-AD) / HEATER (COP-AD)

[illegible]



*KIT OPCIONAL EN MODELOS CO-COP

Fecha	Firma	I10_I42_I44	Página	
01-06-2018	B. Alcantara	KIT BOMBA DESAGÜE / DRAINAGE PUMP KIT		

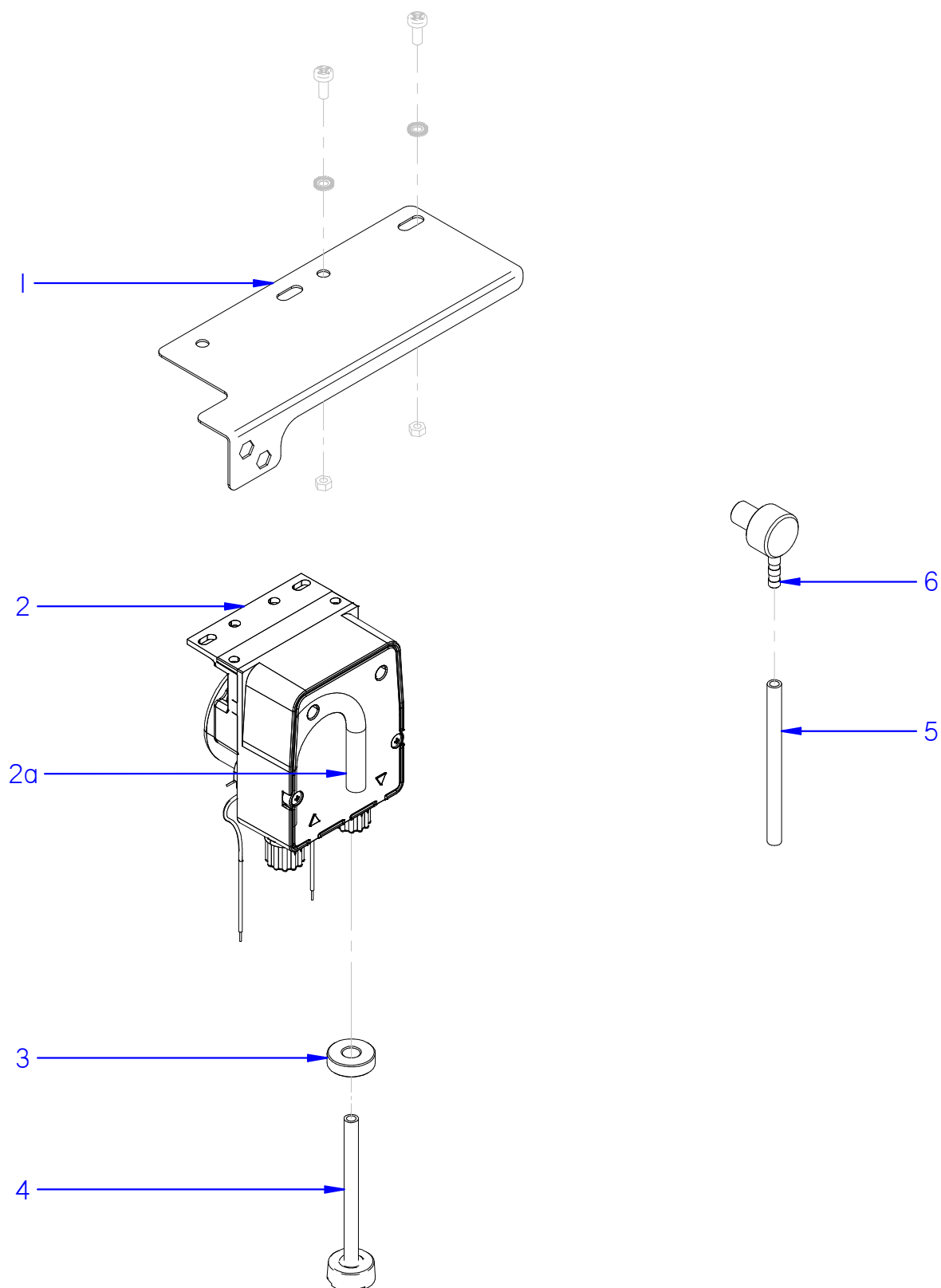
**APARATO /
APPLIANCE**

LAVAVAJILLAS / DISHWASHER

ZONA / ZONE

KIT BOMBA DESAGÜE (BD) / DRAINAGE PUMP KIT (BD)

[illegible]



*INCLUIDO EN MODELOS AD

*KIT OPCIONAL EN MODELOS CO-COP

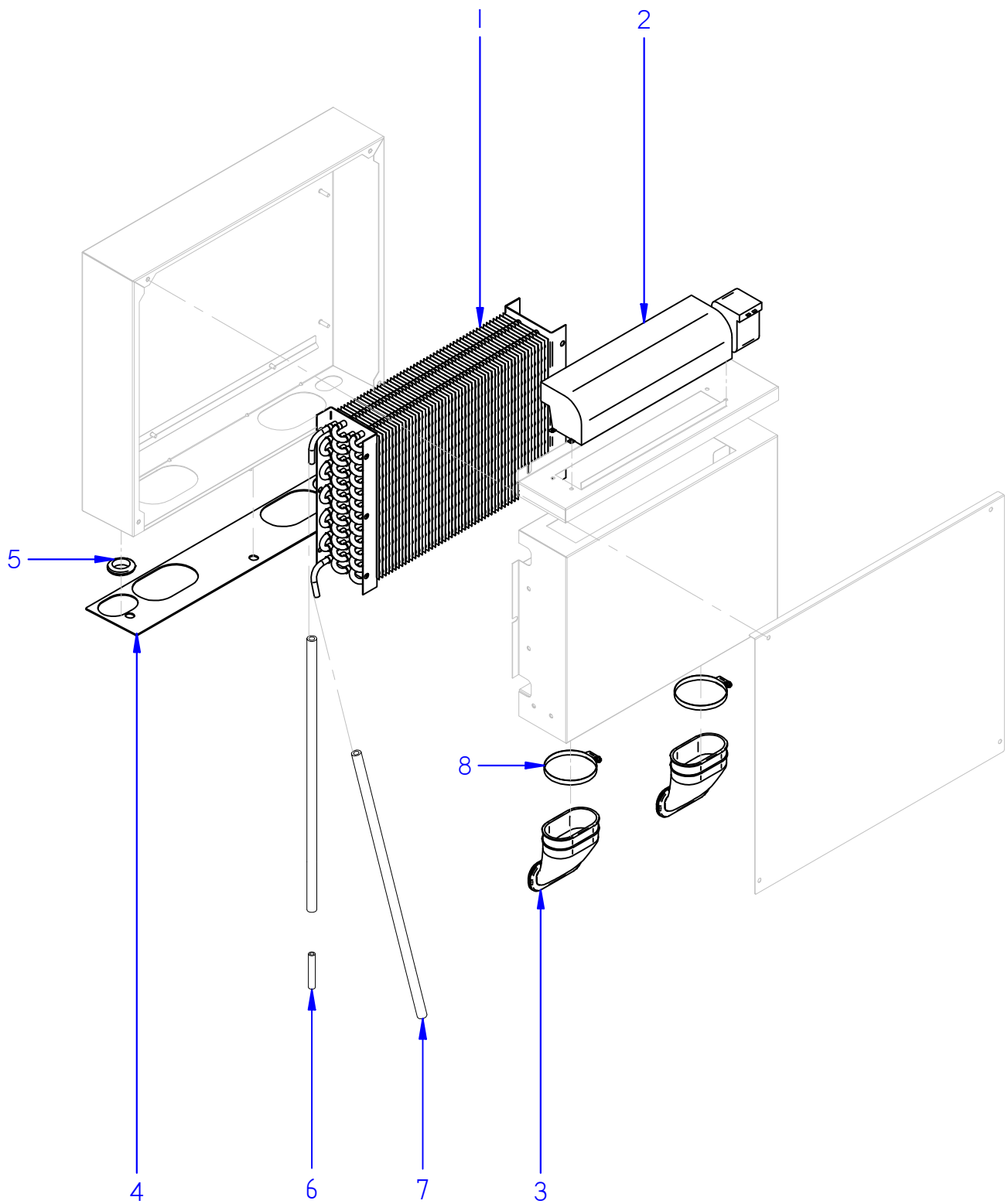
Fecha	Firma	I10_I42_I44_I25	Página	
01-06-2018	B. Alcantara	KIT DOSIFICADOR DETERGENTE / SOAP DISPENSER KIT		

**APARATO /
APPLIANCE**

LAVAVAJILLAS / DISHWASHER

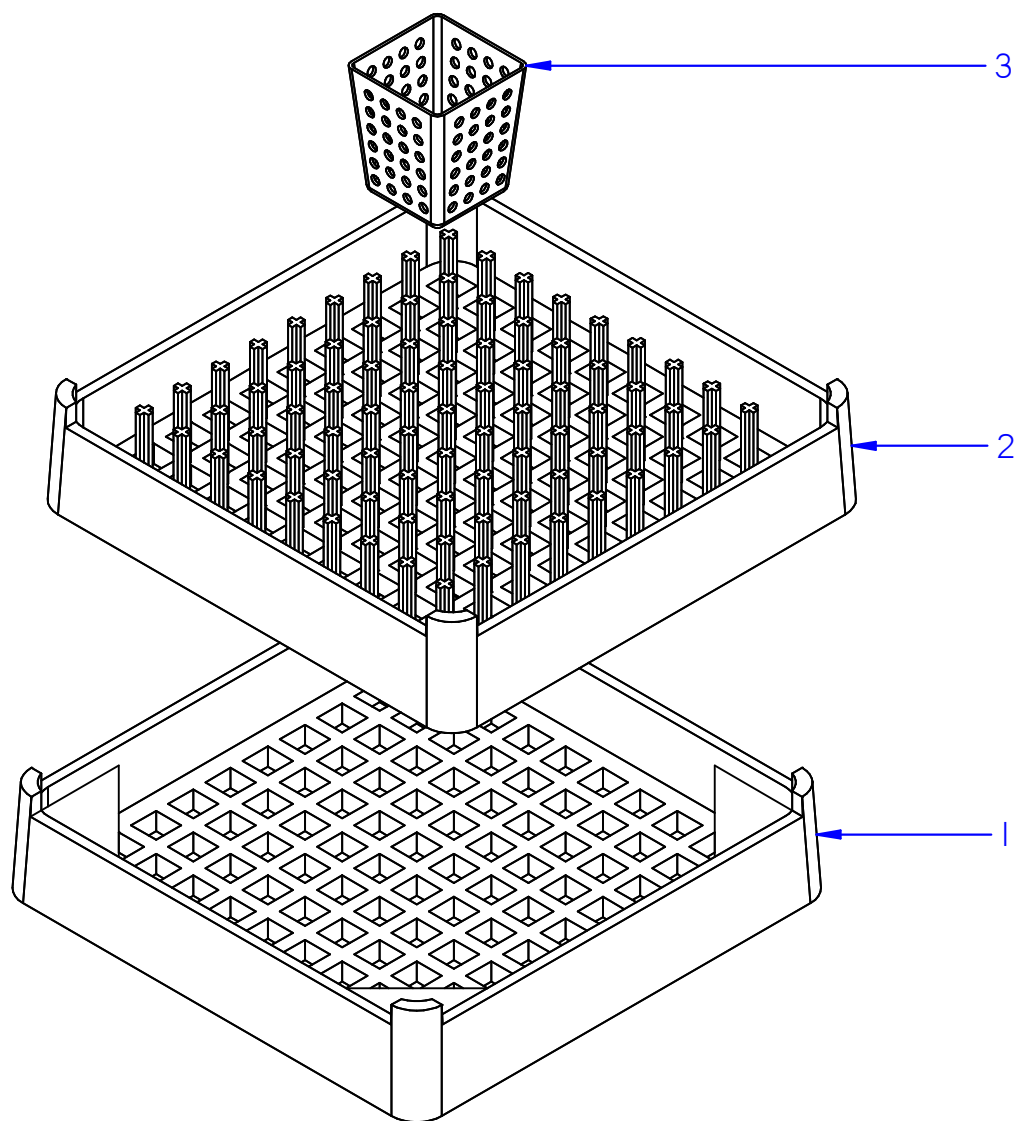
ZONA / ZONE

KIT DOSIFICADOR DETERGENTE (DD) / SOAP DISPENSER KIT (DD)[illegible]



Fecha	Firma	VERSIONES HRS / HRS VERSIONS	Página	
01-09-2020	I. Rodriguez	HEAT RECOVERY SYSTEM		

unidad en centímetros (cm) / unit in centimetres (cm)

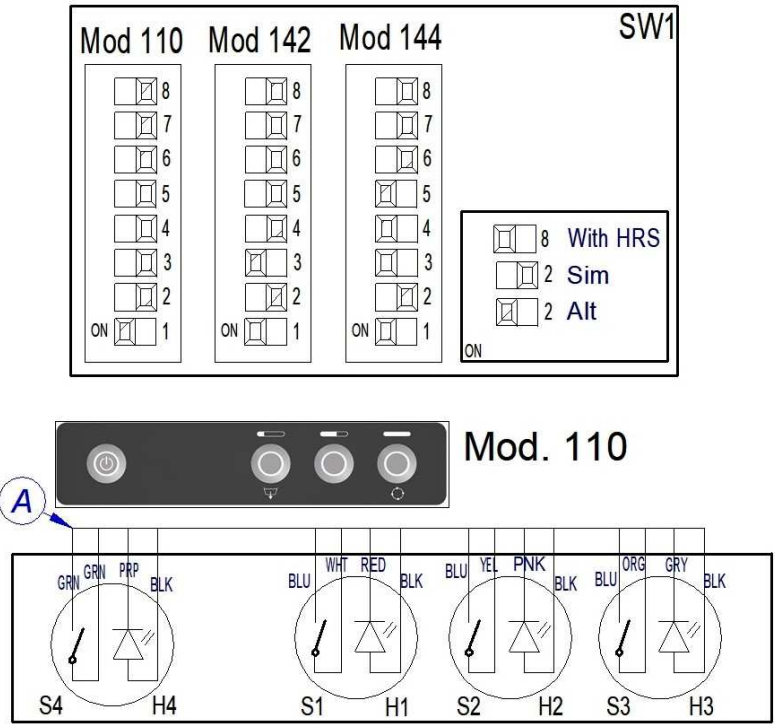
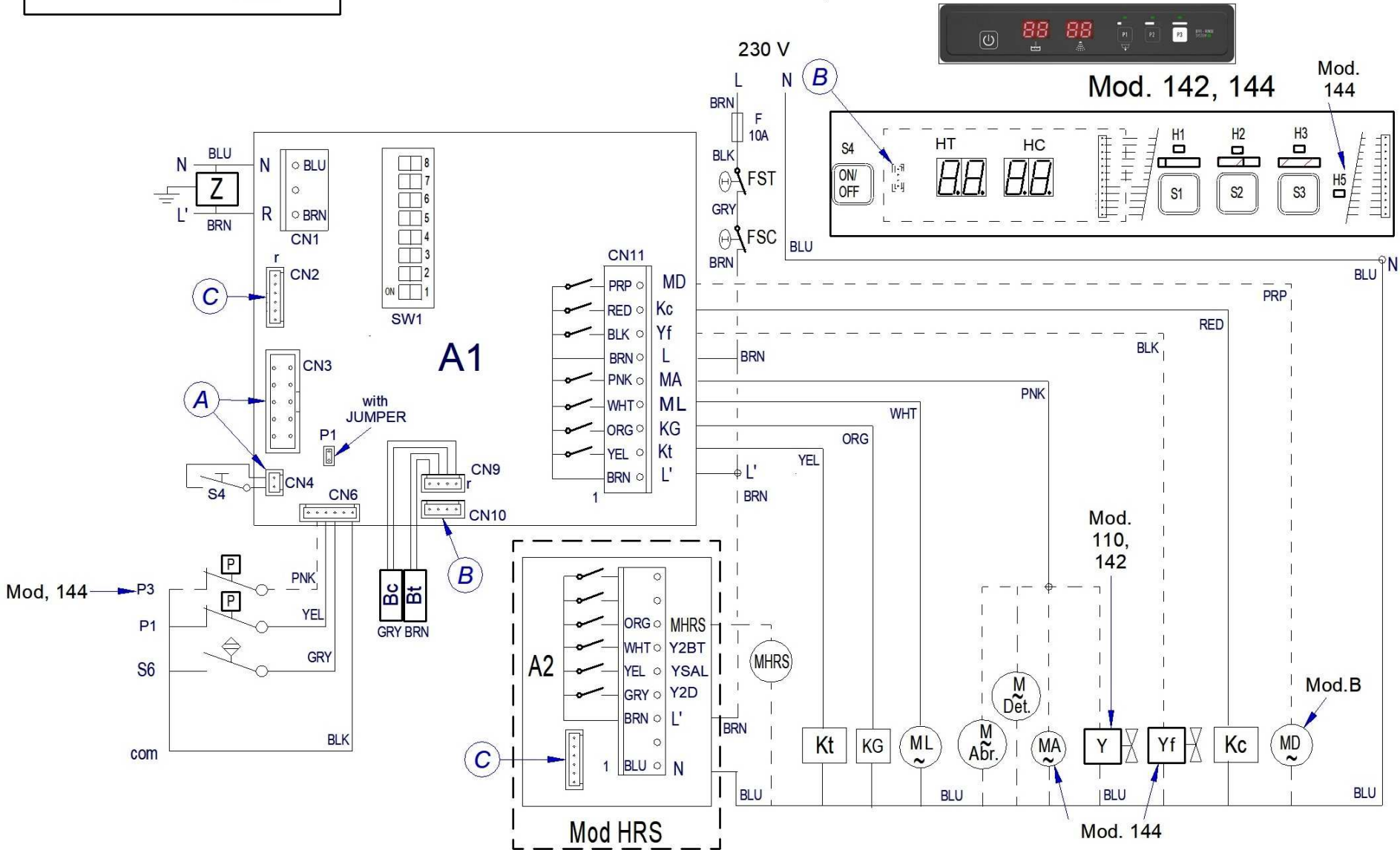
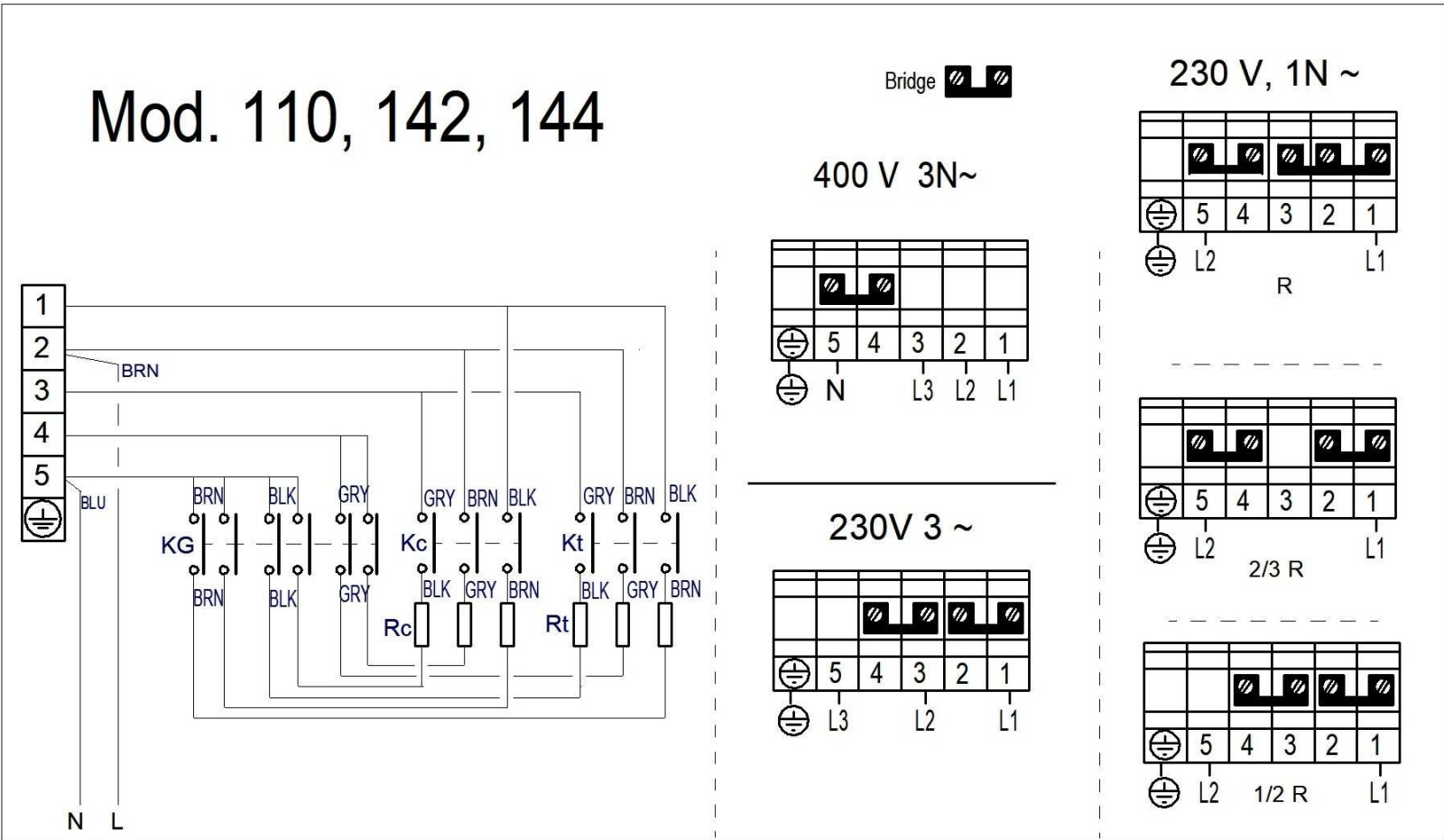
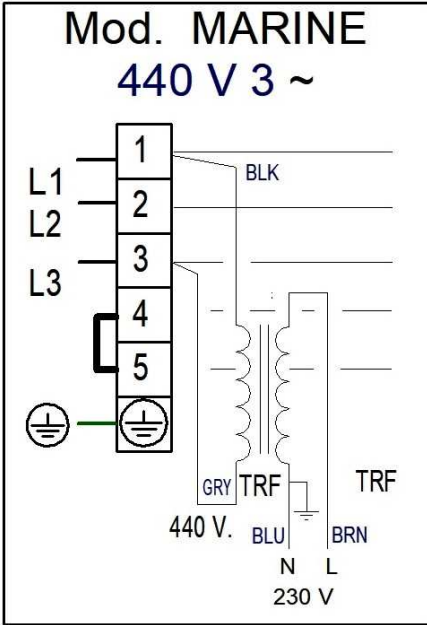
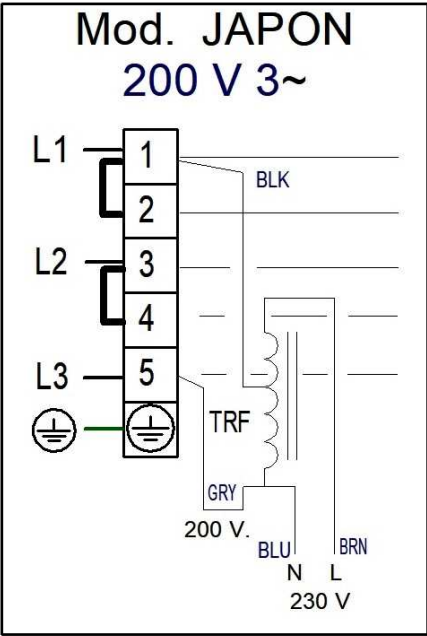


Fecha	Firma	110-142-144-125	Página	
01-09-2020	I. Rodriguez	CETILLOS / BASKETS	36	

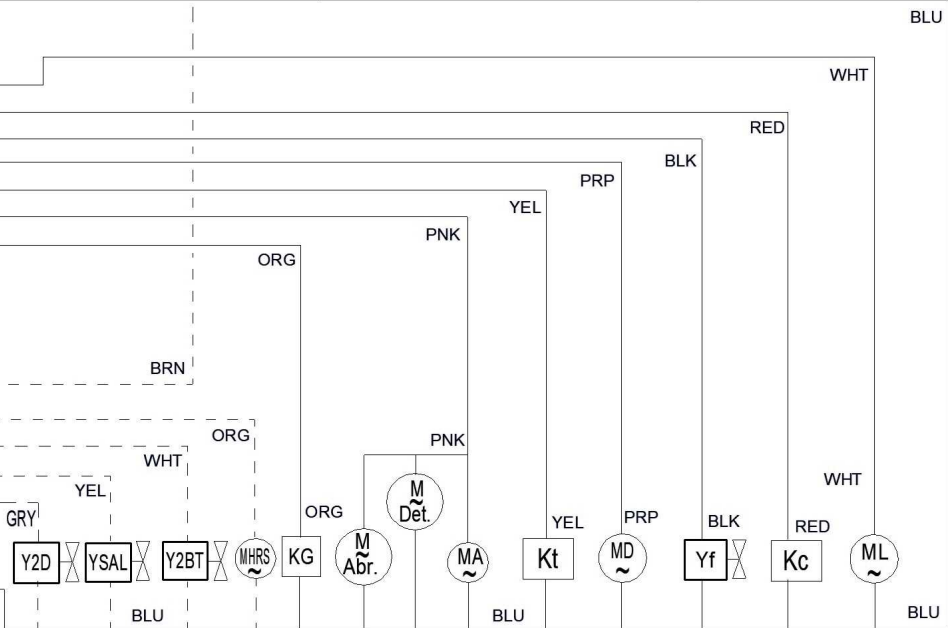
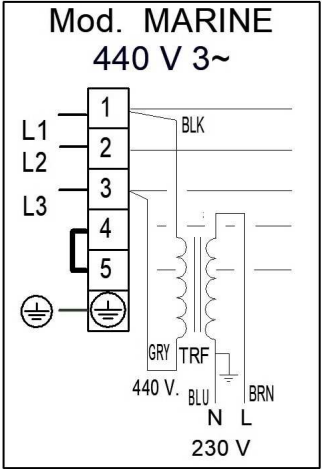
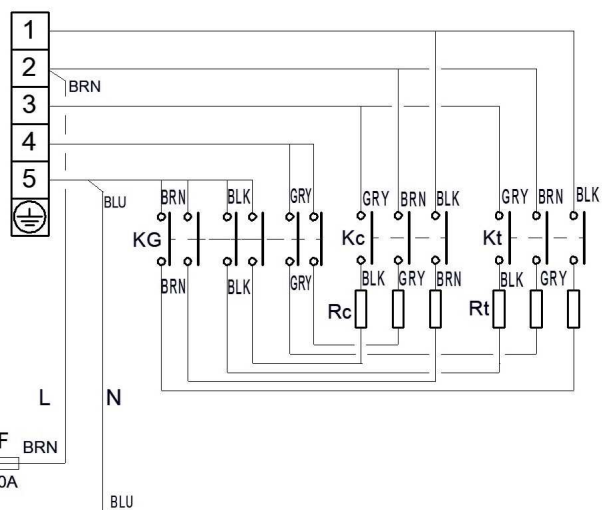
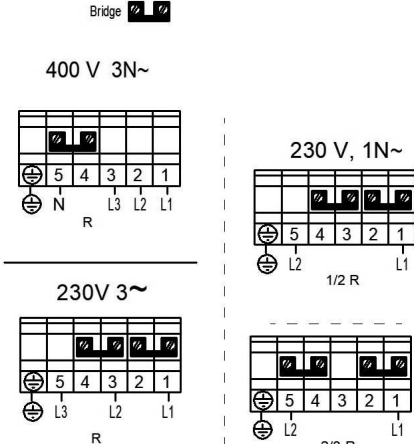
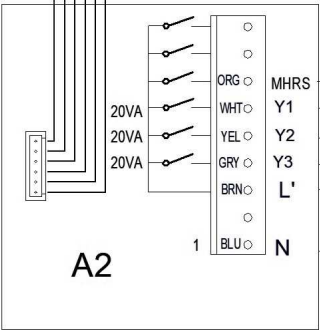
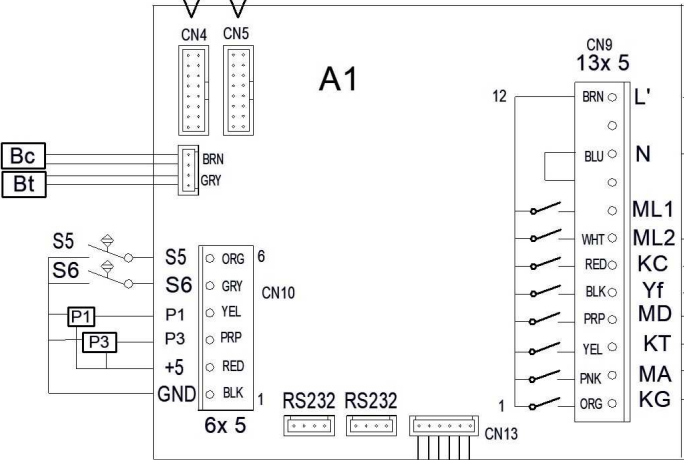
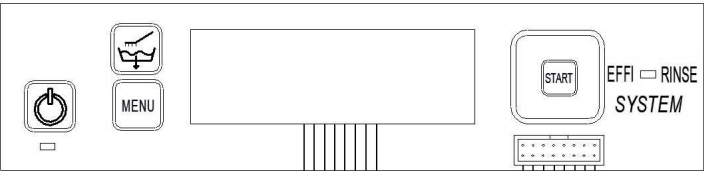
[illegible]

[illegible]

ITEM	CODIGO REFERENCE	DENOMINACIÓN	DENOMINATION	CO-110	CO-142	COP-144	COP-144 S	AD-125	AD-125 SOFT								HASTA UNTIL	DESDE SINCE	ZONA / ZONE
2	12242368	EMBELLECEDOR CO-110	STICKER CO-110	1	-	-	-	-	-										portamandos (110) / control holder (110)
3	12241256	PULSADOR METAL D19	PUSH BUTTON METAL D19	3	-	-	-	-	-										portamandos (110) / control holder (110)
4	12242881	PULSADOR METAL D19 ICON	PUSH BUTTON METAL D19 ICON	1	-	-	-	-	-										portamandos (110) / control holder (110)
8	12025036	SONDA NTC	NTC PROBE	1	1	1	1	1	1										portamandos (110_142_144_125) / control holder (110_142_144_125)
10	12232119	CONTROL TARJETA 7 RELES	7 RELAY CONTROL BOARD	1	1	1	1	-	-										portamandos (110_142_144) / control holder (110_142_144)
11	12024040	CONTACTOR	CONTACTOR	2	2	2	2	2	2										portamandos (110_142_144_125) / control holder (110_142_144_125)
12	12123407	PRESOSTATO SIMPLE	SIMPLE PRESSURE SWITCH	1	1	1	1	-	-										portamandos (110_142_144) / control holder (110_142_144)
13	12024011	CONTACTOR	CONTACTOR	1	1	1	1	-	-										portamandos (110_142_144) / control holder (110_142_144)
2	12239325	EMBELLECEDOR	STICKER	-	1	-	-	-	-										portamandos (142) / control holder (142)
14	12120189	CONTROL TARJETA 6 RELES	6 RELAY CONTROL BOARD	1	1	1	1	1	1										portamandos (110_142_144_125) / control holder (110_142_144_125)
4	12188440	DISPLAY	DISPLAY	-	1	1	1	-	-										portamandos (142_144) / control holder (142_144)
2	12239682	EMBELLECEDOR	STICKER	-	-	1	1	-	-										portamandos (144) / control holder (144)
20	12123259	CONTACTOR AUXILIAR	AUXILIARY CONTACTOR	-	-	2	2	-	-										portamandos (110_142_144_125) / control holder (110_142_144_125)
21	12023803	PRESOSTATO SIMPLE 1,3-2,8	SIMPLE PRESSURE SWITCH 1,3-2,8	-	-	1	1	-	-										portamandos (144) / control holder (144)
2	12239431	EMBELLECEDOR AD-505 _AD-125	STICKER AD-505 _AD-125	-	-	-	-	1	1										portamandos (125) / control holder (125)
4	12048027	VISUALIZADOR 32 DIGITOS	DISPLAY 32 DIGITS	-	-	-	-	1	1										portamandos (125) / control holder (125)
10	12189023	CONTROL TARJETA 8 RELES	8 RELAY CONTROL BOARD	-	-	-	-	1	1										portamandos (125) / control holder (125)
12	12042019	PRESOSTATO SIMPLE 2 BAT	SIMPLE PRESSURE SWITCH 0,1	-	-	-	-	1	1										portamandos (125) / control holder (125)
18	12024477	INTERRUPTOR MAGNETICO	MAGNETIC SWITCH	1	1	1	1	1	1										portamandos (110_142_144_125) / control holder (110_142_144_125)
14	12045886	RESISTENCIA TRIPLE 230V 4,5Kw UL	230V 4,5Kw UL TRIPLE RESISTOR	1	1	1	1	-	-										COMPONENTES CUBA (CO-COP) / TANK PARTS (CO-COP)
17	12096597	TERMOSTATO SEG. 110°C	110°C SAFETY THERMOSTAT	1	1	1	1	1	1										componenetes cuba (CO COP AD) / tank parts (CO COP AD)
9	12150959	RESISTENCIA TRIPLE 230V 2,1Kw UL	230V 2,1Kw UL TRIPLE RESISTOR	-	-	-	-	1	1										componenetes cuba (AD) / tank parts (AD)
6	12023456	BOMBA DESAGÜE	DRAINAGE PUMP	-	-	-	-	1	1										conjunto desagüe (AD) / drainage assembly (AD)
12	12219512	CONJUNTO ELECTROV. + REGULADOR	ELECTROV. + REGULATOR ASSEMBLY	1	1	-	-	-	-										conjunto hidráulico (CO) / hydraulic assembly (CO)
18	12248885	ELECTROBOMBA 50Hz	ELECTRIC PUMP 50Hz	1	1	1	1	1	1										conjunto hidráulico (CO) / hydraulic assembly (CO)
18	12275066	ELECTROBOMBA 60Hz	ELECTRIC PUMP 60Hz	1	1	1	1	1	1										conjunto hidráulico (CO) / hydraulic assembly (CO)
11	12219511	ELECTROVÁLVULA + REGULADOR 4L/min	ELECTROVALVE + 4L/min REGULATOR	-	-	1	1	1	1										conjunto hidráulico (COP-AD) / hydraulic assembly (COP-AD)
19	12187518	BOMBA ACLARADO 50Hz	50Hz RINSING PUMP	-	-	1	1	1	1										conjunto hidráulico (COP-AD) / hydraulic assembly (COP-AD)
19	12216217	BOMBA ACLARADO 60Hz	60Hz RINSING PUMP	-	-	1	1	1	1										conjunto hidráulico (COP-AD) / hydraulic assembly (COP-AD)
11	12217769	CONJUNTO ELECTROVÁLVULA REGEN.	REGEN. ELECTROVALVE ASSEMBLY	-	-	-	-	-	1										conjunto hidráulico (AD SOFT) / hydraulic assembly (AD SOFT)
12	12217768	CONJUNTO ELECTROVÁLVULA ENTRADA	INLET ELECTROVALVE ASSEMBLY	-	-	-	-	-	1										conjunto hidráulico (AD SOFT) / hydraulic assembly (AD SOFT)
23	12244577	BOTE DE SALES COMPLETO	COMPLETE SALT CONTAINER	-	-	-	-	-	1										conjunto hidráulico (AD SOFT) / hydraulic assembly (AD SOFT)
28	12024874	DESCALCIFICADOR 4 COLUMNAS	4 COLUMN SOFTENER	-	-	-	-	-	1										conjunto hidráulico (AD SOFT) / hydraulic assembly (AD SOFT)
30	12225191	SOPORTE MOTOBOMBA 50Hz	50Hz PUMP SUPPORT	-	-	-	-	-	1										conjunto hidráulico (AD SOFT) / hydraulic assembly (AD SOFT)
30	12225194	SOPORTE MOTOBOMBA 60Hz	60Hz PUMP SUPPORT	-	-	-	-	-	1										conjunto hidráulico (AD SOFT) / hydraulic assembly (AD SOFT)
2	12265544	RESISTENCIA TRIPLE 230V 6Kw UL	230V 6Kw UL TRIPLE HEATING ELEMENT	1	-	-	-	-	-										calderín (CO) / heater (CO)
4	12265533	RESISTENCIA TRIPLE 230V 9Kw UL	230V 9Kw UL TRIPLE HEATING ELEMENT	-	1	1	1	1	1										calderín (CO-COP-AD) / heater (CO-COP-AD)



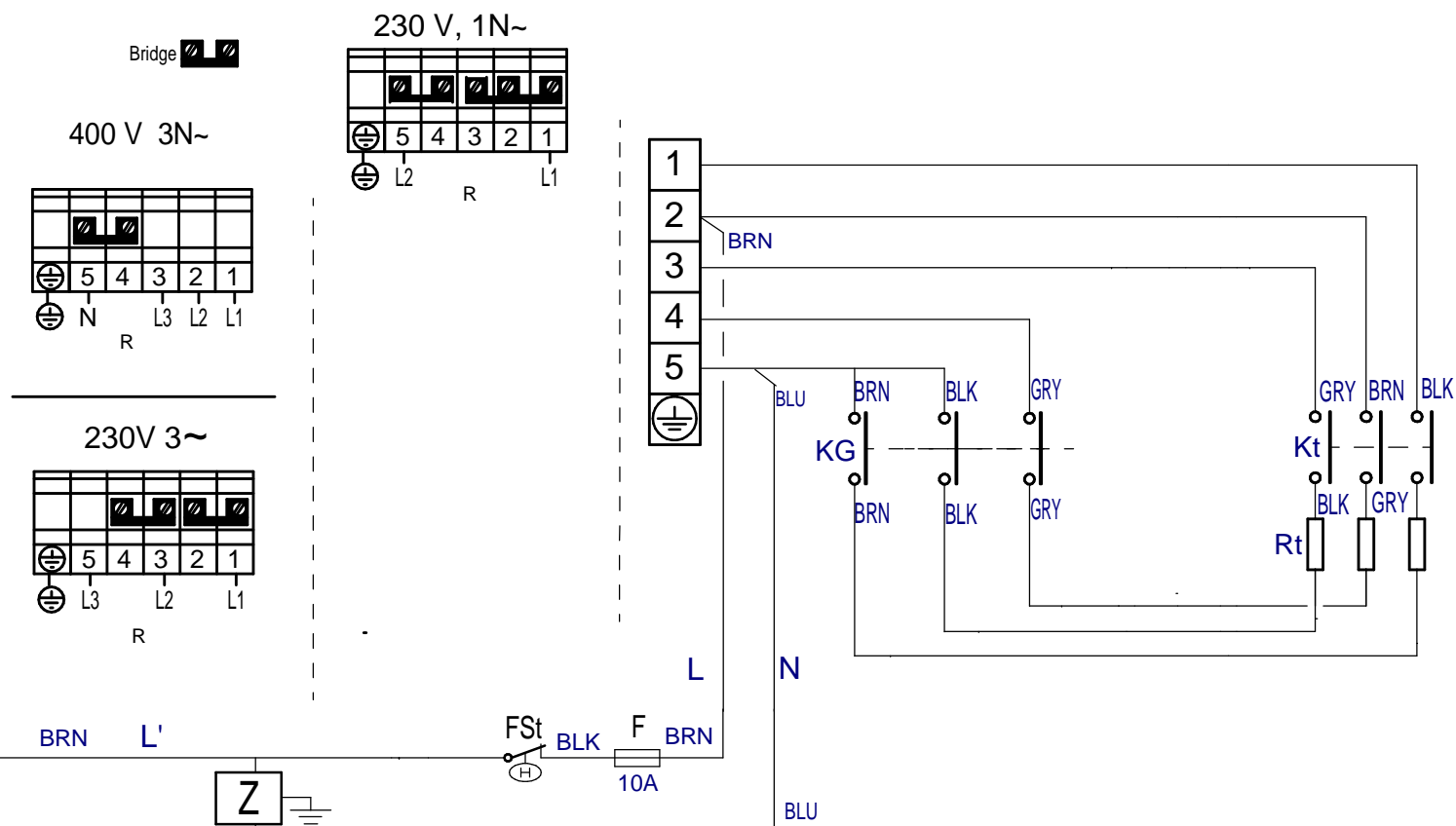
Mod. 125



12252091

Diagram illustrating the control panel layout:

- Power button (indicated by a power symbol icon).
- Menu button (labeled **MENU**).
- Start button (labeled **START**).

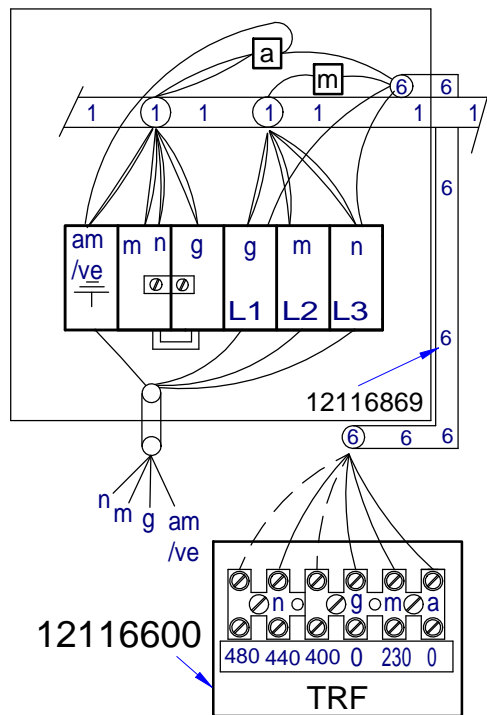


Nov - 2020

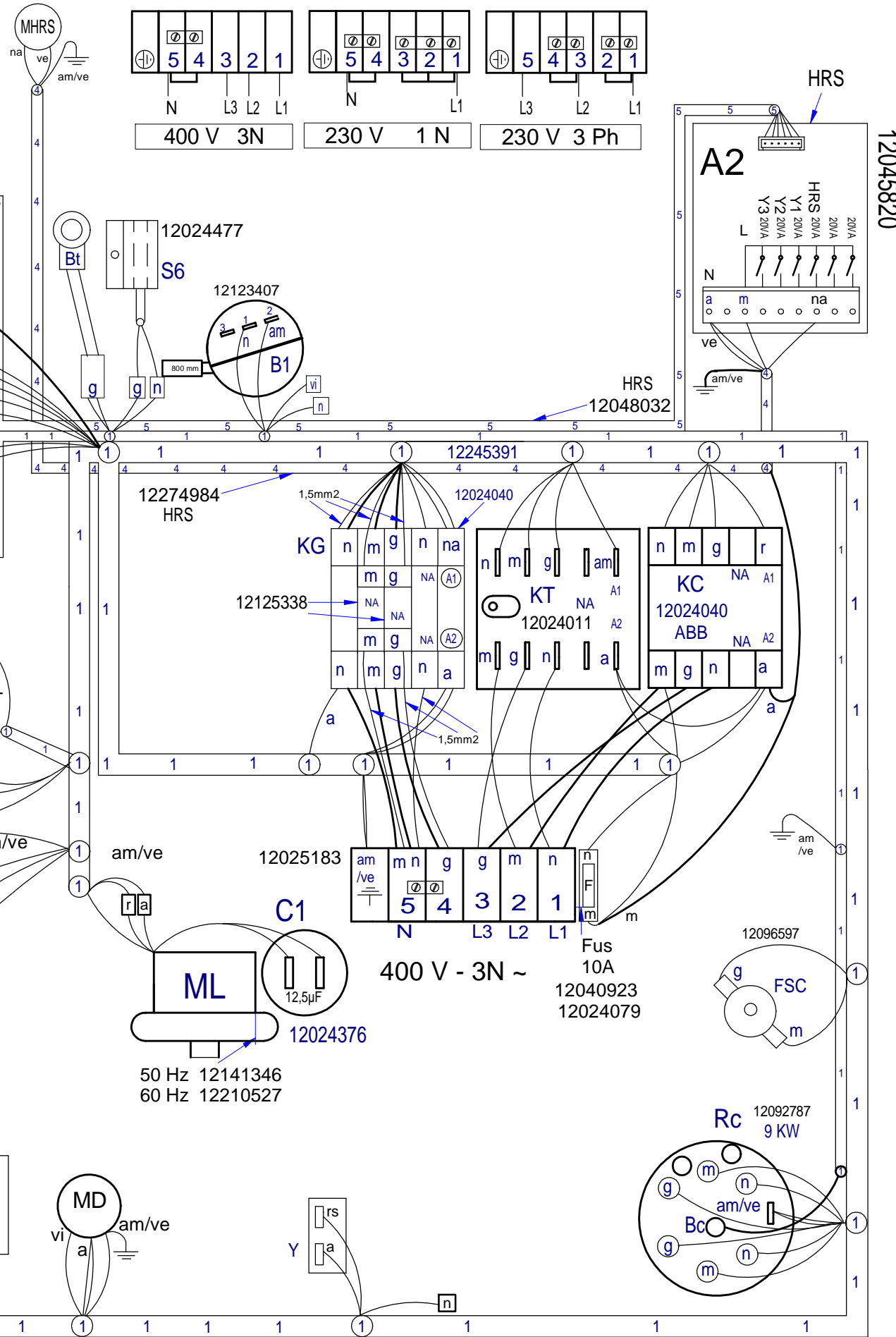
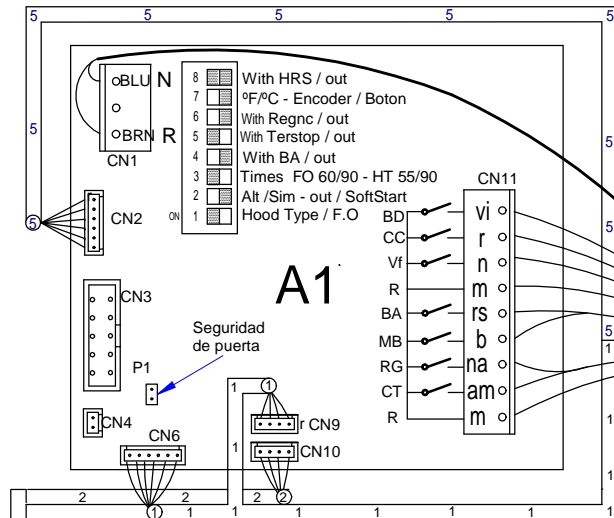
Simb / LENG		ESPAÑOL	ENGLISH	FRANÇAIS
A1, A2	=	Placa Electrónica	Electronic Board	Carte électronique
A1-P1	=	Puente electrico / Jumper	Electric Bridge / Jumper	Pont électrique / Jumper
Bc	=	Sonda Temperatura calderin	Boiler temperature probe	Sonde de température de chaudière
Bt	=	Sonda Temperatura Tanque	Tank Temperature Probe	Sonde de température du réservoir
C1, C2	=	Condensador	Capacitor	Condensateur
F	=	Fusible	Fuse	Fusible
FSC	=	Termostato Seguridad Calderin	Boiler Safety Thermostat	Thermostat de sécurité de la chaudière
FST	=	Termostato Seguridad Tanque	Tank Safety Thermostat	Thermostat de sécurité du réservoir
H1, H2, H3	=	Lampara Ciclo	Cycle Light	Voyant de cycle
H4	=	Lampara Encendido	Power On Light	Voyant de Démarrage
H5 (Modxx4)	=	Lampara Effic-rinse	Effic-rinse Light	Voyant du Effic-rinse
H5 (Mod Soft)	=	Lampara Falta Sal	Missing salt light	Voyant de absence à sel
HC	=	Display Temperatura calderin	Boiler temperature Display	Affichage de la température de chaudière
HT	=	Display Temperatura Tanque	Tank Temperature Display	Affichage de la température du réservoir
Kc	=	Contactor Calentamiento Calderin	Boiler Heating Contactor	Contacteur de chauffage de chaudière
KG	=	Rele General	Main Relay	Relais General
Kt	=	Contactor Calentamiento Tanque	Tank Heating Contactor	Contacteur de chauffage de réservoir
L, L1,L2,L3	=	Fases Conexión Electrica	Power Supply Phases	Phases d'alimentation
MAbr	=	Dosificador Abrillantador	Rinse Aid Dispenser	Doseur de tensoactive
MA	=	Bomba de Aclarado	Rinse Pump	Pompe de rinçage
MD	=	Bomba de Desague	Drain Pump	Pompe de vidange
MDet	=	Dosificador Detergente	Detergent Dispenser	Doseur de détergent
MHRS	=	Ventilador HRS	HRS Fan	HRS ventilateur
ML	=	Bomba de Lavado	Wash Pump	Pompe de lavage
N	=	Neutro	Neutral	Neutre
P1	=	Presostato Tanque	Tank Pressure Switch	Pressostat de réservoir
P2	=	Presostato de seguridad Tanque	Tank Safety Pressure Switch	Pressostat de sécurité du réservoir
P3	=	Presostato Calderin	Boiler Pressure Switch	Pressostat de Chaudière
PE	=	Puesta a Tierra	Earth Ground	Mise à terre
Rc	=	Resistencia calentamiento Calderin	Boiler Heating Element	Élément chauffant de la chaudière
Rt	=	Resistencia calentamiento Tanque	Tank Heating Element	Élément chauffant de réservoir
S1, S2, S3	=	Pulsador de Programa	Program/Cycle Push button	Bouton de programme
S4	=	Pulsador de Encendido/Apagado	ON/OFF Push button	Bouton ON / OFF
S5	=	Interruptor falta de sal	Lack of salt switch	Interrupteur de Manque de sel
S5 (ADE 125)	=	Interruptor Generador Agua Caliente	Water Booster Switch	Commutateur de pompe booster
S6	=	Interruptor de Puerta	Door Switch	Interrupteur de porte
SW1	=	DIP-SWITCH	DIP-SWITCH	DIP-SWITCH
TRF	=	Transformador	Transformer	Transformateur
Y	=	Electrovalvula Llenado Tanque	Tank Filling Solenoid valve	Electrovanne de remplissage de réservoir
Y2BT	=	Electrovalvula Regeneracion BT	Regeneration BT Solenoid Valve	Electrovanne de régénération BT
Y2D	=	Electrovalvula Regeneracion Desagüe	Regeneration Drain Solenoid Valve	Electrovanne de régénération vidange
YSAL	=	Electrovalvula Regeneracion SAL	Regeneration SALT Solenoid Valve	Electrovanne de régénération sel
Yf	=	Electrovalvula Llenado Calderin	Boiler Filling Solenoid valve	Electrovanne de remplissage de la chaudière
Z	=	Filtro EMC	EMC Filter	Filtre CEM
COLOR	=	COLORES	COLOURS	COULEURS
BLK, bk, n	=	Negro	Black	Noir
BLU, bl, a	=	Azul	Blue	Bleu
BRN, bn, m	=	Marrón	Brown	Marron
GRN, gn, ve	=	Verde	Green	Vert
GRY, gy, g	=	Gris	Grey	Gris
ORG, or, na	=	Naranja	Orange	Orange
PNK, pk, rs	=	Rosa	Pink	Rose
PRP, pr, vi	=	Violeta	Purple	Violet
RED, rd, r	=	Rojo	Red	Rouge
WHT, wh, b	=	Blanco	White	Blanc
YEL, yw, am	=	Amarillo	Yellow	Jaune
YW/GN, am/ve	=	Amarillo/verde	Yellow / green	Jaune / vert
		NOV - 2020	L 21, 25, 33	12248269

3 ~ 400 V, Without Neutral

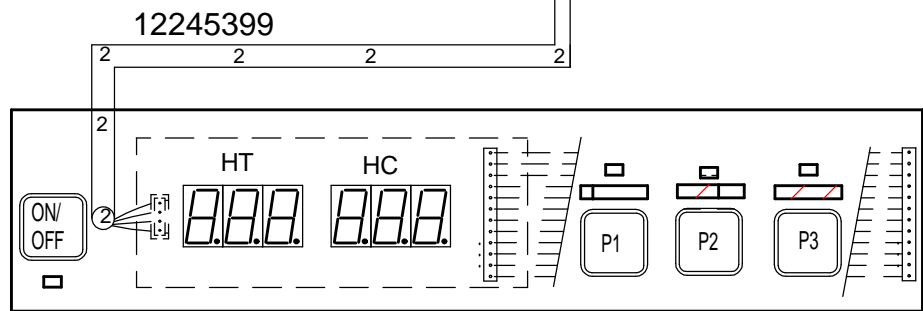
Remove MBL 230V: 50 Hz 12024265, 60 Hz 12024270
Enter MBL 400V: 50 Hz 12000045, 60 Hz 12000044



CO 142, W



①	General	12245391
②	Membrana	12245399
④	HRS	12274984
⑤	HRS	12048032
⑥	MARINE	12116869
Esquema PRCOP 604		12248367
Esquema 140x W		12248365
Esquema 1xx		12248363
Indicador de componentes		12252134
Leyenda		12252093
Prensa estopas		12009927



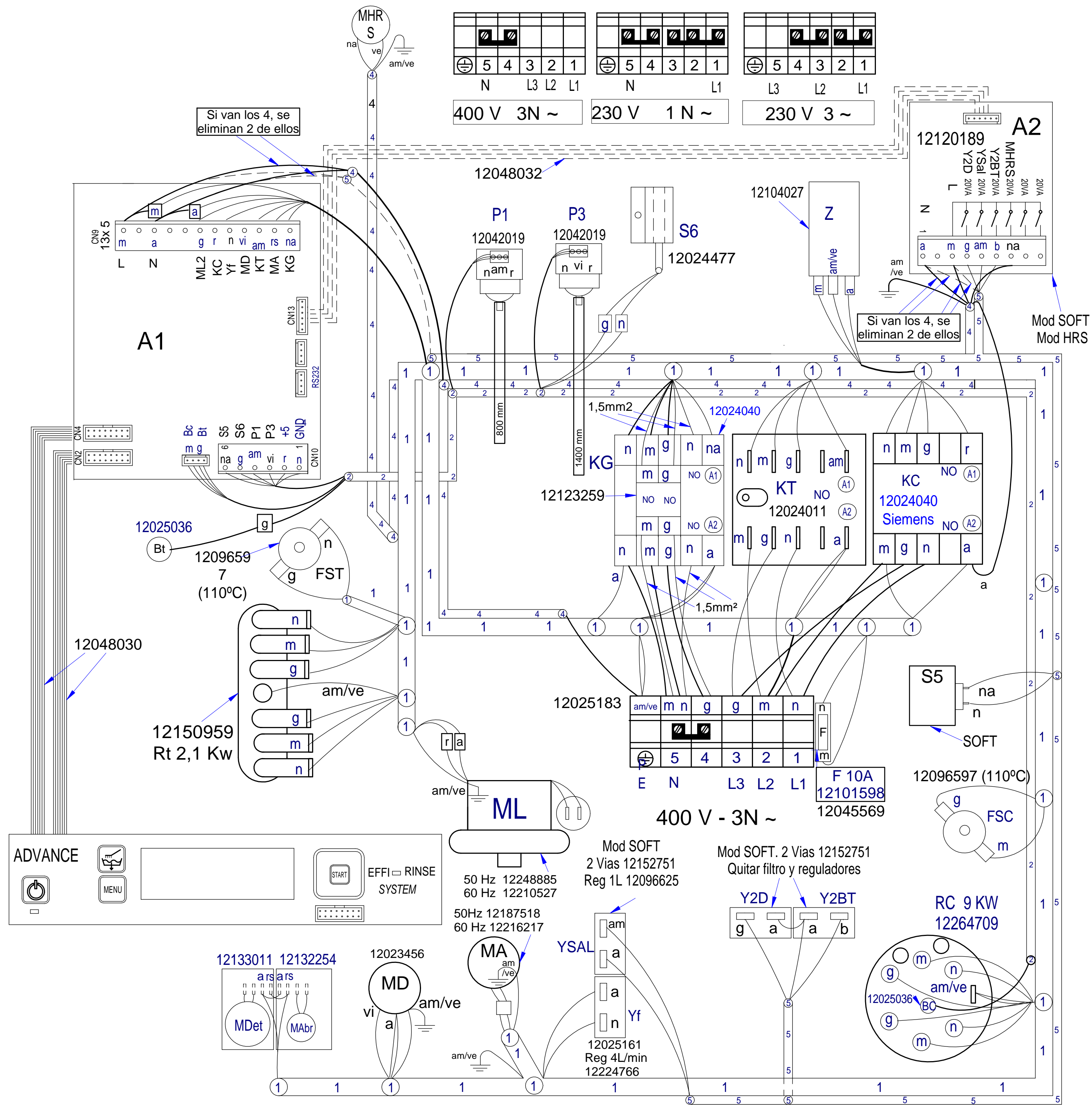
Mod. W 142

Nota: Todos los cables hembra que queden sin conectar se les colocaran una funda para macho 12010227

12249085

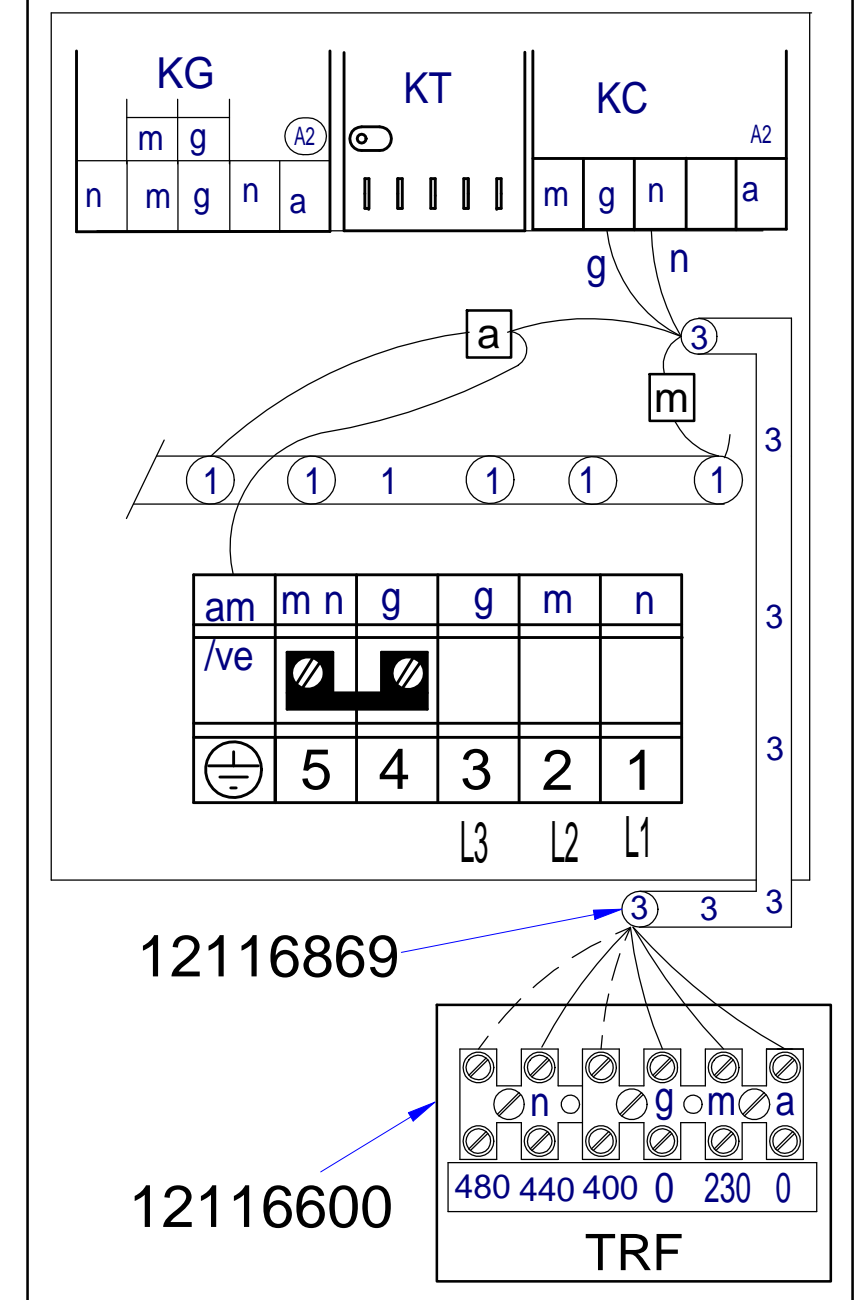
ENE - 2020

AD 125



①	12221775
②	12221775
③ MARINE	12116869
④ HRS	12119237
⑤ SOFT	12185810
Esquema teórico	12252091
Indicador de componentes	12252134
Leyenda	12252093

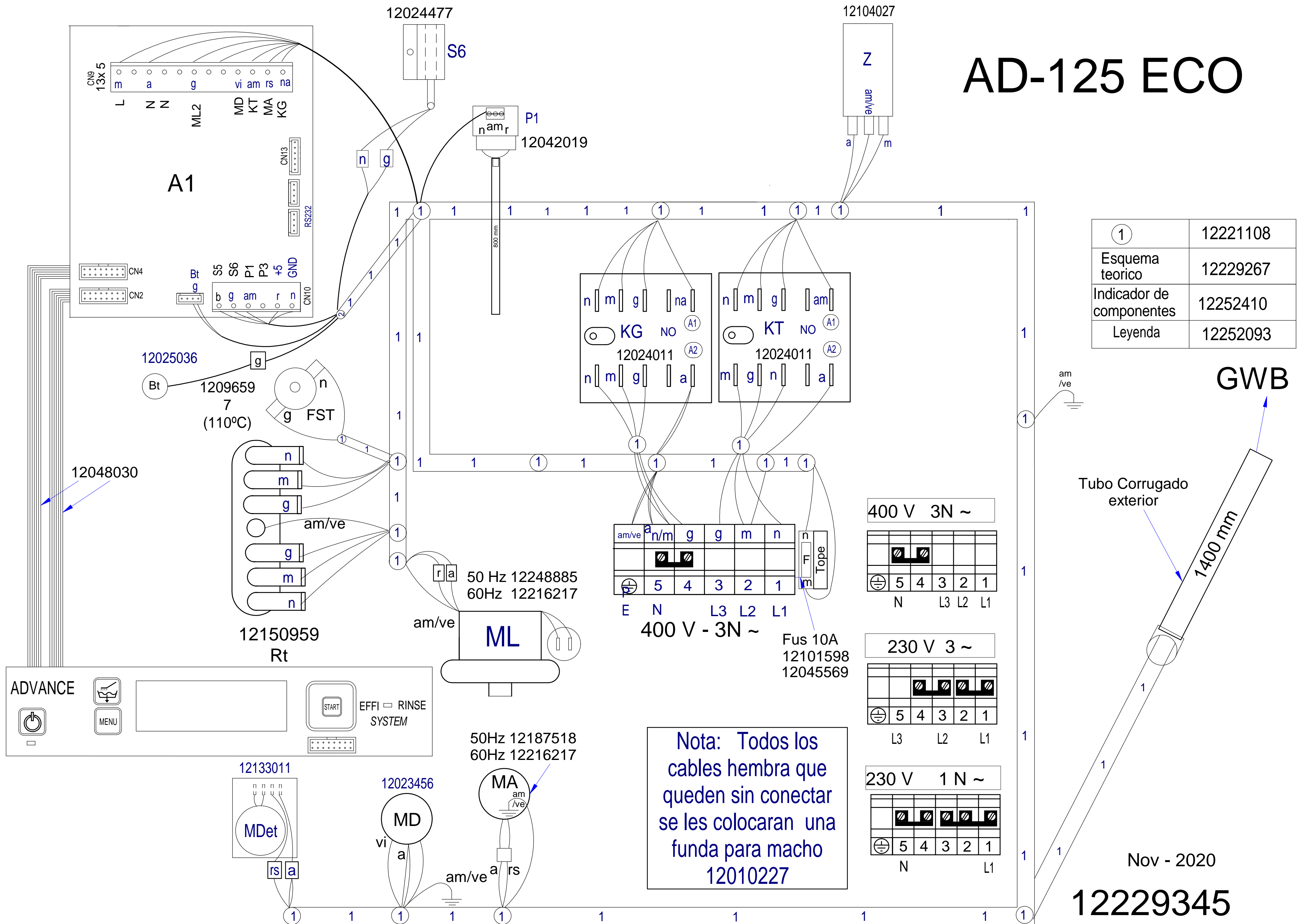
3 ~ 400 V, Without Neutral



Nota: Todos los cables hembra que queden sin conectar se les colocaran una funda para macho 12010227

12187891 Nov - 2020

AD-125 ECO



①	12221108
Esquema teorico	12229267
Indicador de componentes	12252410
Leyenda	12252093

GWB

Tubo Corrugado exterior

1400 mm

Nov - 2020

12229345