
LAVAVAJILLAS DE APERTURA FRONTAL
FRONT LOADING DISHWASHERS

MODELOS / *MODELS*

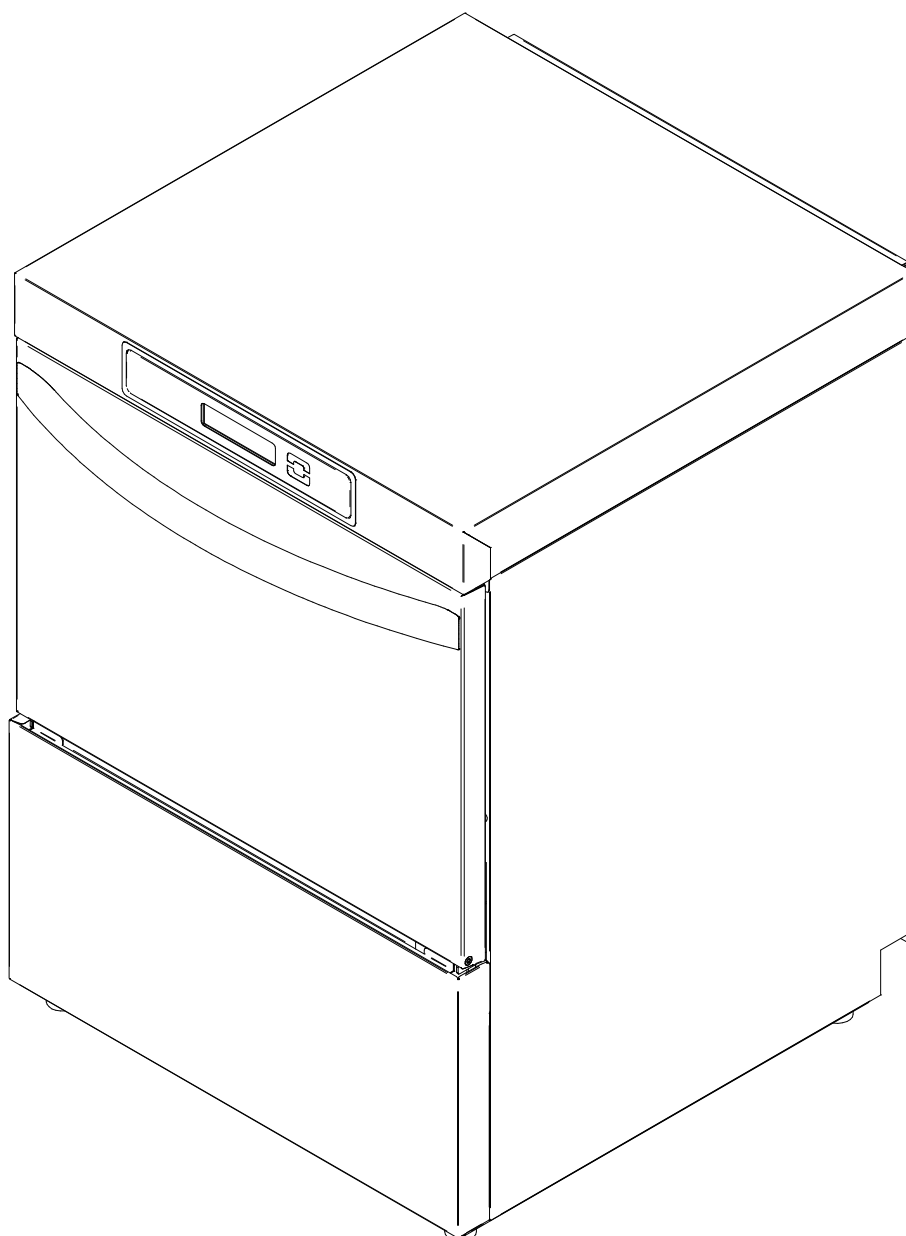
CO-500

CO-501

CO-502

COP-504

AD-505



JULIO 2018 *JULY*
Revisado JUNIO 2019 *JUNE updated*

Despiece técnico CO_500-501-502; COP-504; AD-505 /
Spare Parts CO_500-501-502; COP-504; AD-505

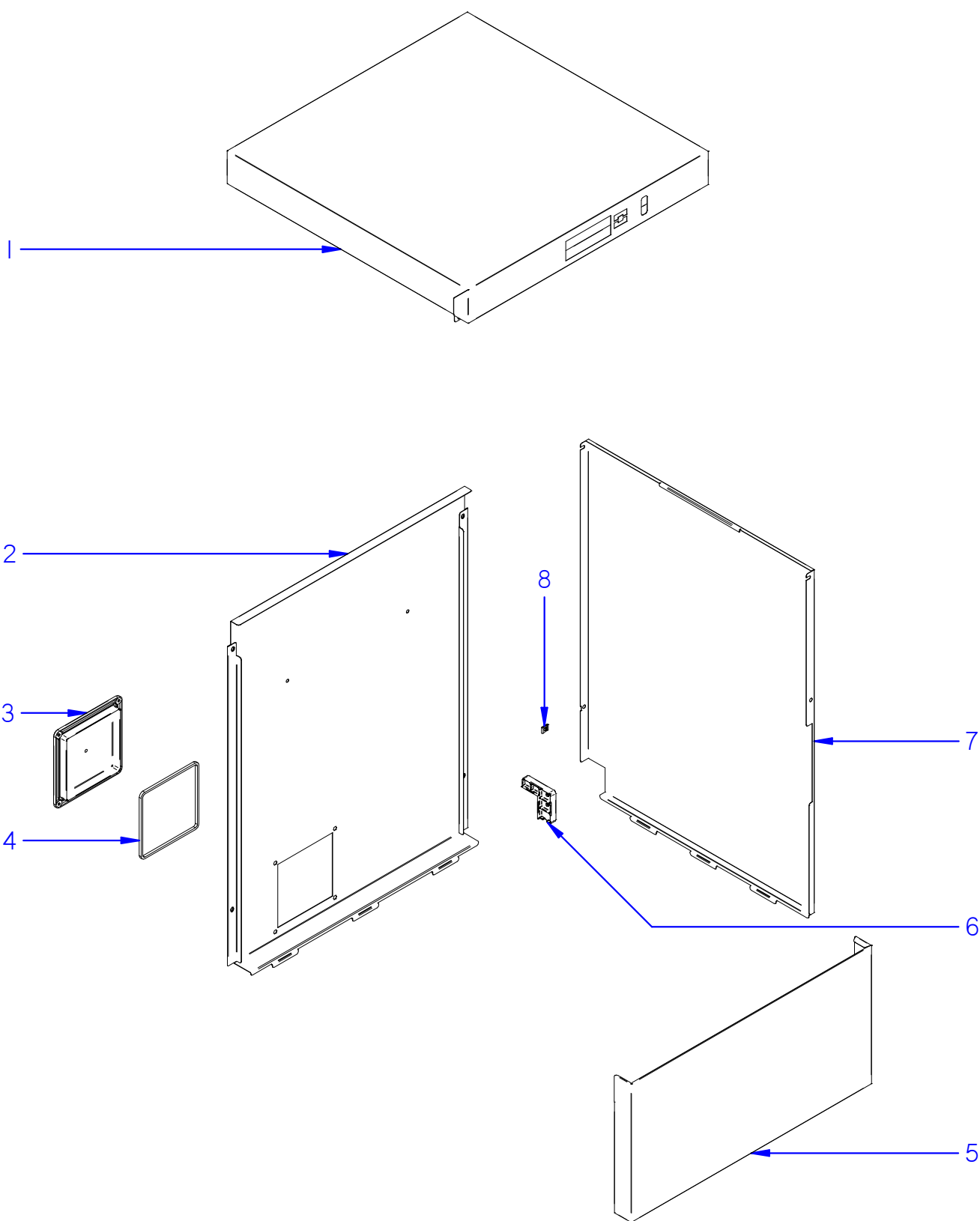



FAGOR INDUSTRIAL

CONTENIDO / CONTENTS

MUEBLE / UNIT.	1-2
PUERTA / DOOR.	3-4
PORTAMANDOS (CO) / CONTROL HOLDER (CO).	5-6
PORTAMANDOS (CO-COP) / CONTROL HOLDER (CO-COP).	7-8
PORTAMANDOS (AD) / CONTROL HOLDER (AD).	9-10
CONJUNTO BASE (CO) / BASE ASSEMBLY (CO).	11-12
CONJUNTO BASE (COP) / BASE ASSEMBLY (COP).	13-14
CONJUNTO BASE (AD) / BASE ASSEMBLY (AD).	15-16
CALDERÍN (CO) / HEATER (CO).	17-18
CALDERÍN (COP-AD) / HEATER (COP-AD).	19-20
CONJUNTO CAJA (CO) / BOX ASSEMBLY (CO).	21-22
CONJUNTO CAJA (COP) / BOX ASSEMBLY (COP).	23-24
CONJUNTO CAJA (AD) / BOX ASSEMBLY (AD).	25-26
CONJUNTO CAJA (AD SOFT) / BOX ASSEMBLY (AD SOFT).	27-28
CONJUNTO HIDRÁULICO (CO) / HYDRAULIC ASSEMBLY (CO).	29-30
CONJUNTO HIDRÁULICO (COP-AD) / HYDRAULIC ASSEMBLY (COP-AD).	31-32
*KIT BOMBA DESAGÜE (BD) / DRAINAGE PUMP KIT (BD).	33-34
*KIT DOSIFICADOR DETERGENTE (DD) / SOAP DISPENSER KIT (DD).	35-36
VARIOS / MISCELLANEOUS.	37
REPUESTOS RECOMENDADOS / RECOMMENDED SPARE PARTS.	38-39

* KITS NO INCLUIDOS EN TODOS LOS MODELOS / KITS NOT INCLUDED IN ALL MODELS

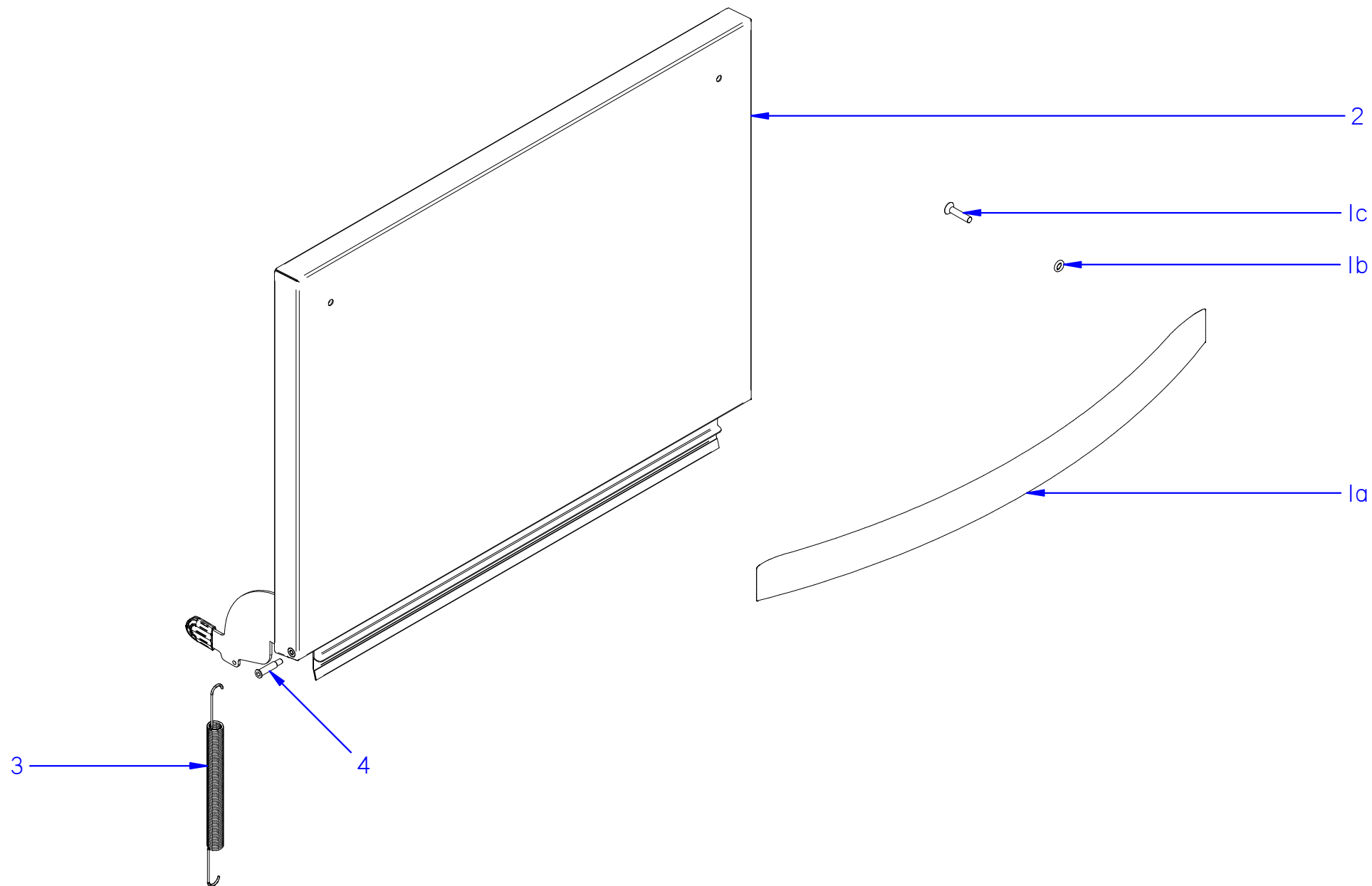



Fecha	Firma	CO_500-501-502; COP-504; AD-505	Página	FAGOR  FAGOR INDUSTRIAL
01-07-2018	B. Alcantara	MUEBLE / UNIT	I	

LAVAVAJILLAS / DISHWASHER

MUEBLE / UNIT	
---------------	--

[illegible]

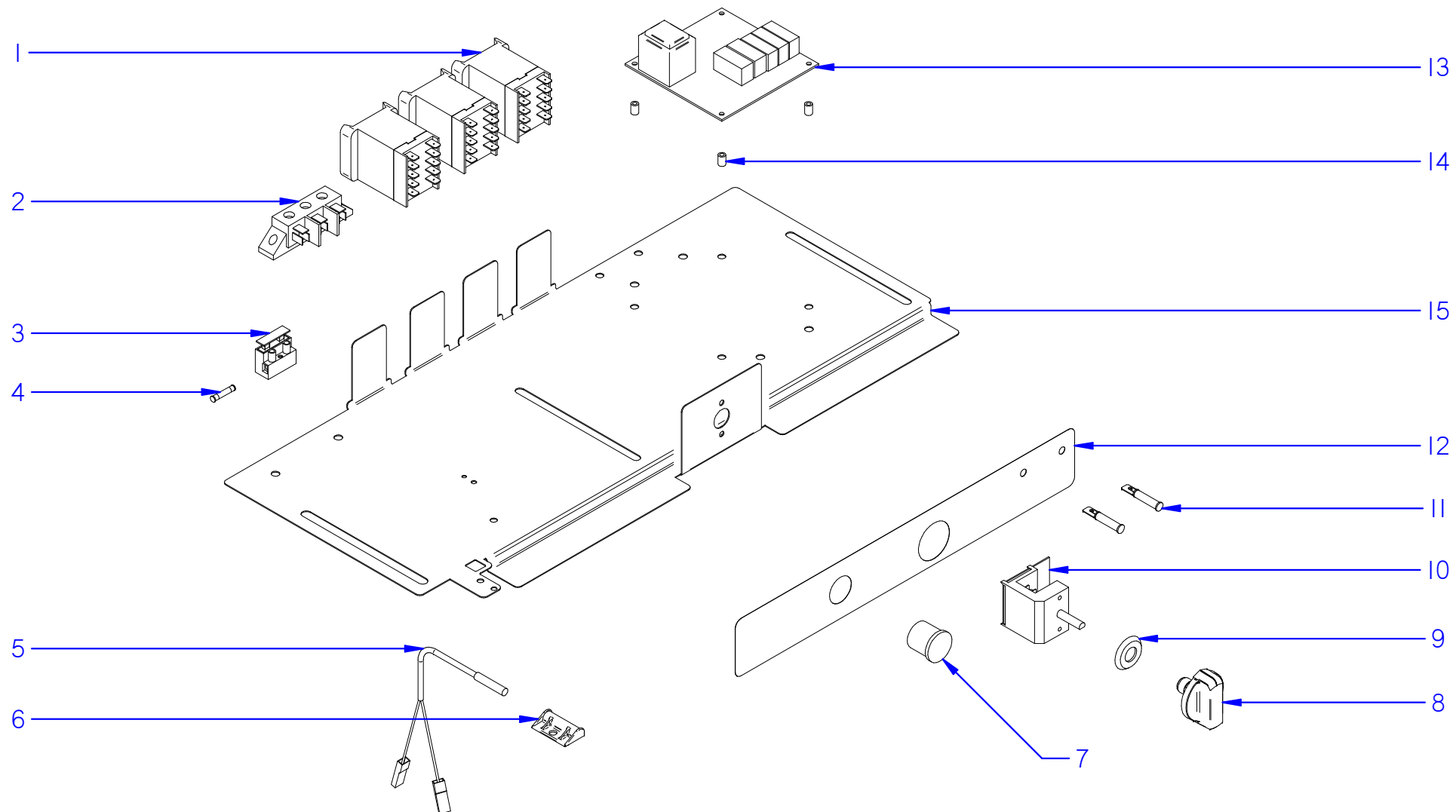



Fecha	Firma	CO_500-501-502; COP-504; AD-505	Página	FAGOR  FAGOR INDUSTRIAL
01-07-2018	B. Alcantara	PUERTA / DOOR	3	

LAVAVAJILLAS / DISHWASHER

PUERTA / DOOR

[illegible]

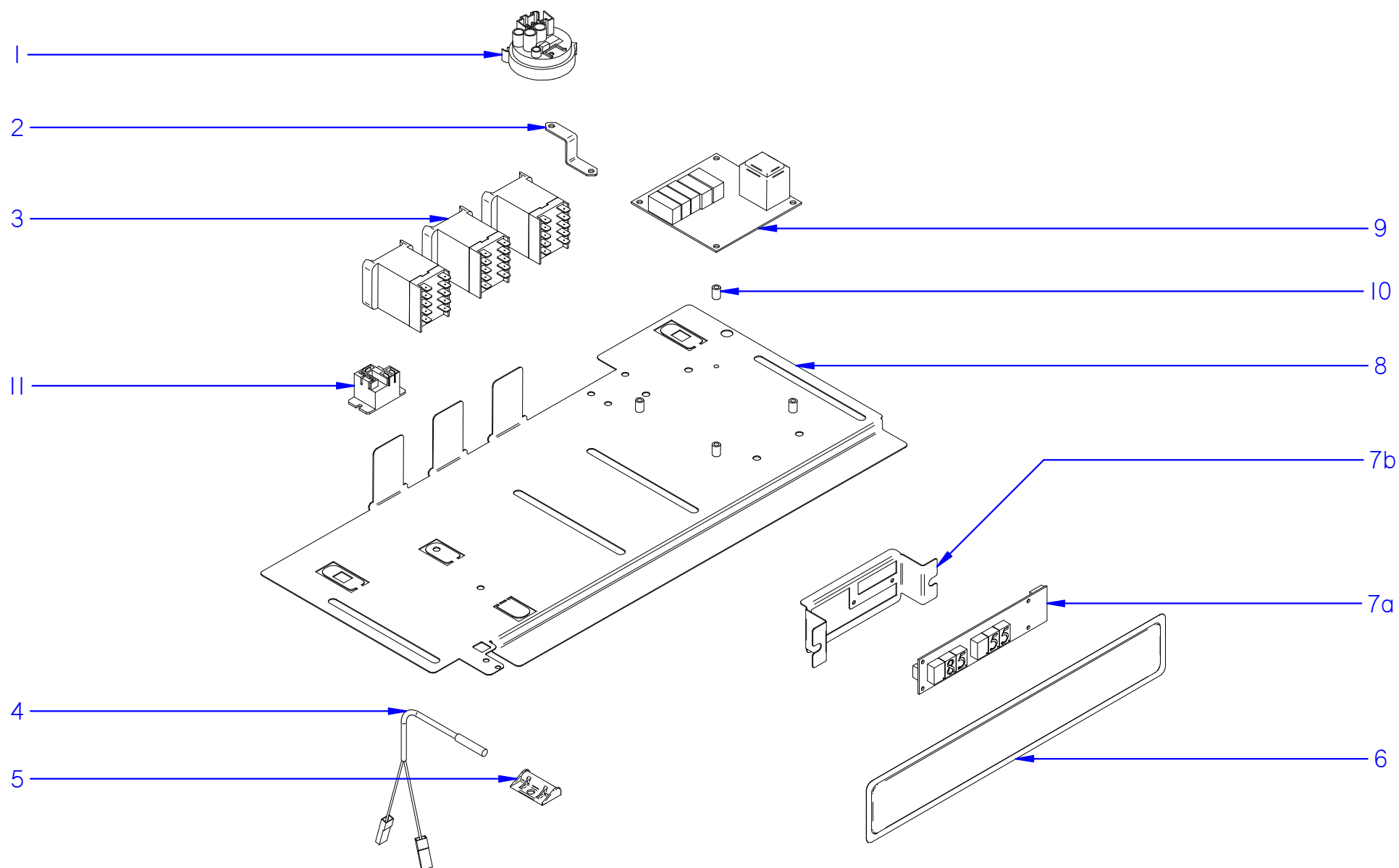



Fecha	Firma	CO_500-50I	Página	FAGOR  FAGOR INDUSTRIAL
01-07-2018	B. Alcantara	PORTAMANDOS (CO) / CONTROL HOLDER (CO)	5	

LAVAVAJILLAS / DISHWASHER

PORTAMANDOS (CO) / CONTROL HOLDER (CO)
--

[illegible]

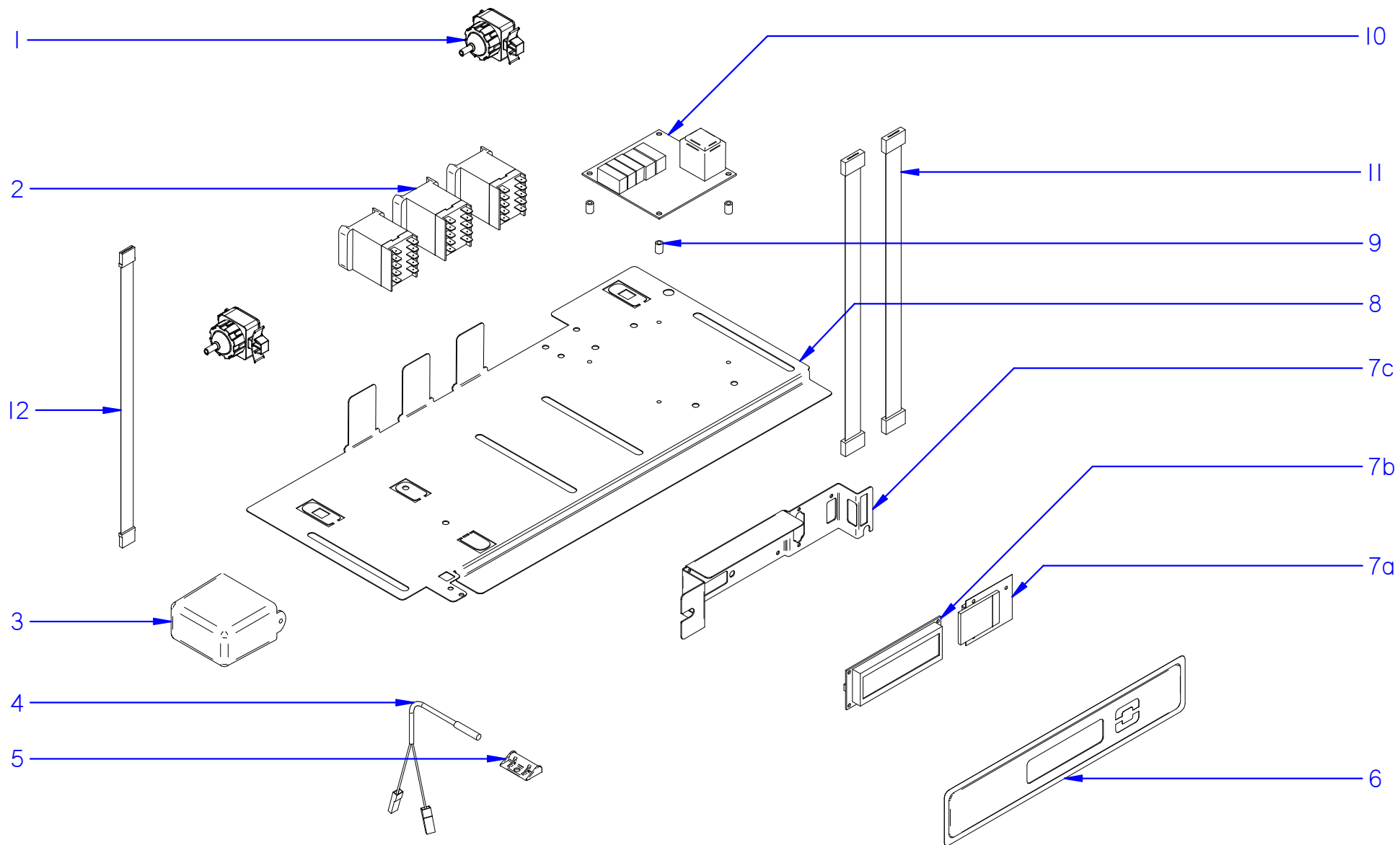



Fecha	Firma	CO-502, COP-504	Página	FAGOR  <small>FAGOR INDUSTRIAL</small>
01-07-2018	B. Alcantara	PORTAMANDOS (CO-COP) / CONTROL HOLDER (CO-COP)	7	

**APARATO /
APPLIANCE**

LAVAVAJILLAS / DISHWASHER

ZONA / ZONE**PORTAMANDOS (CO-COP) / CONTROL HOLDER (CO-COP)**[illegible]

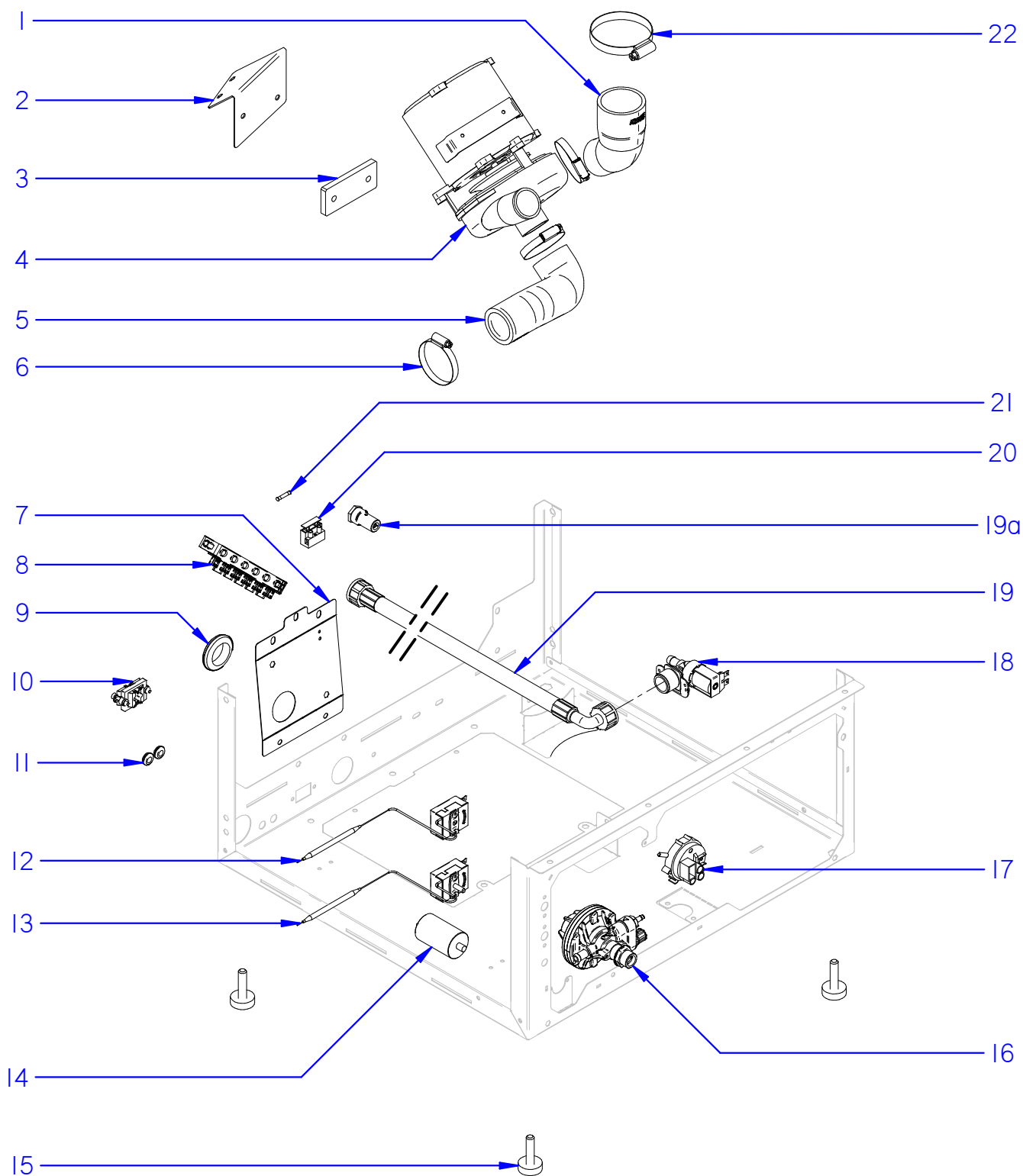



Fecha	Firma	AD-505	Página	FAGOR  FAGOR INDUSTRIAL
01-07-2018	B. Alcantara	PORTAMANDOS (AD) / CONTROL HOLDER (AD)	9	

LAVAVAJILLAS / DISHWASHER

PORTAMANDOS (AD) / CONTROL HOLDER (AD)
--

[illegible]

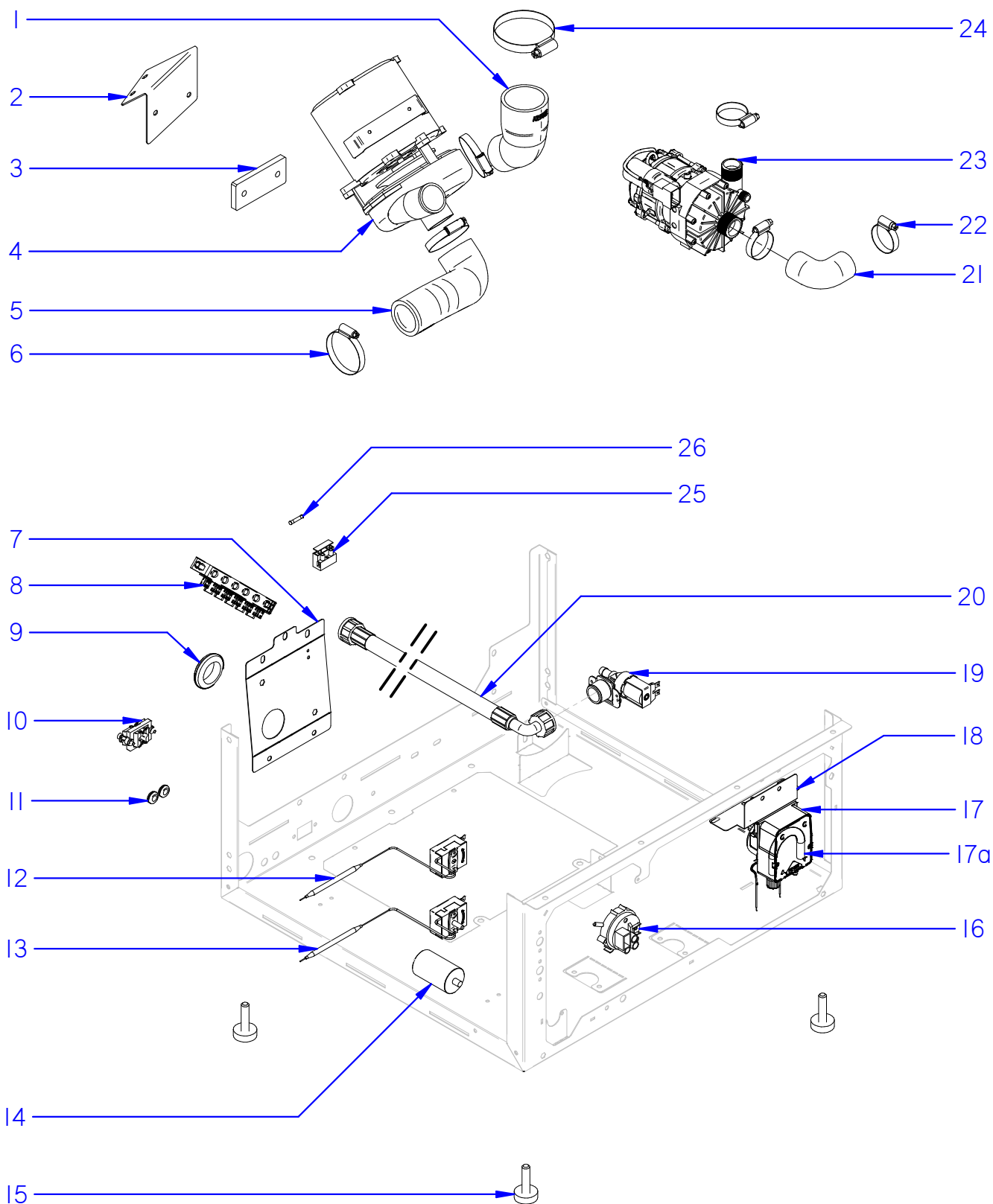


Fecha	Firma	CO_500-501-502	Página	FAGOR  FAGOR INDUSTRIAL
01-07-2018	B. Alcantara	CONJUNTO BASE (CO) / BASE ASSEMBLY (CO)	II	

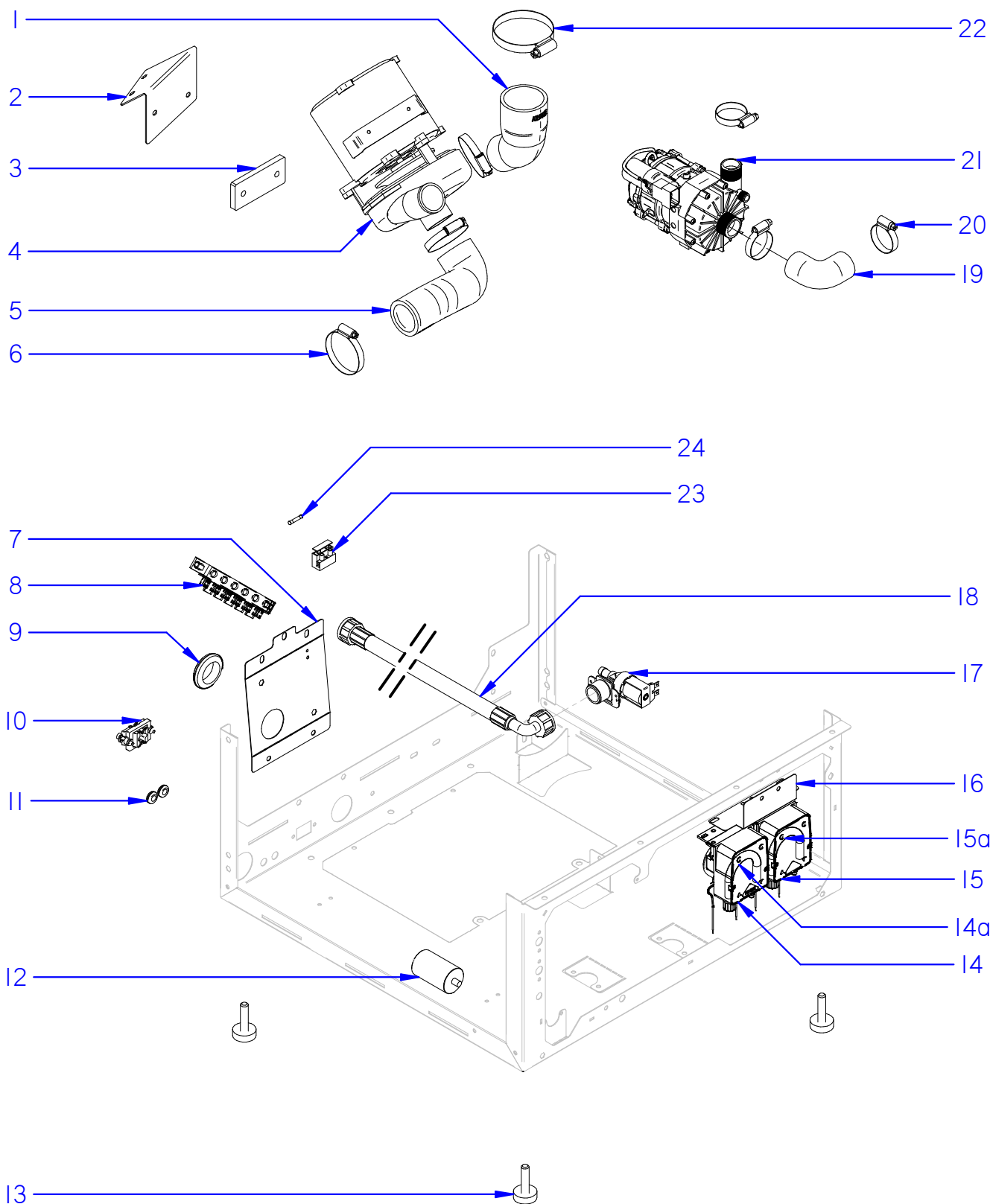
LAVAVAJILLAS / DISHWASHER

CONJUNTO BASE (CO) / BASE ASSEMBLY (CO)

[illegible]



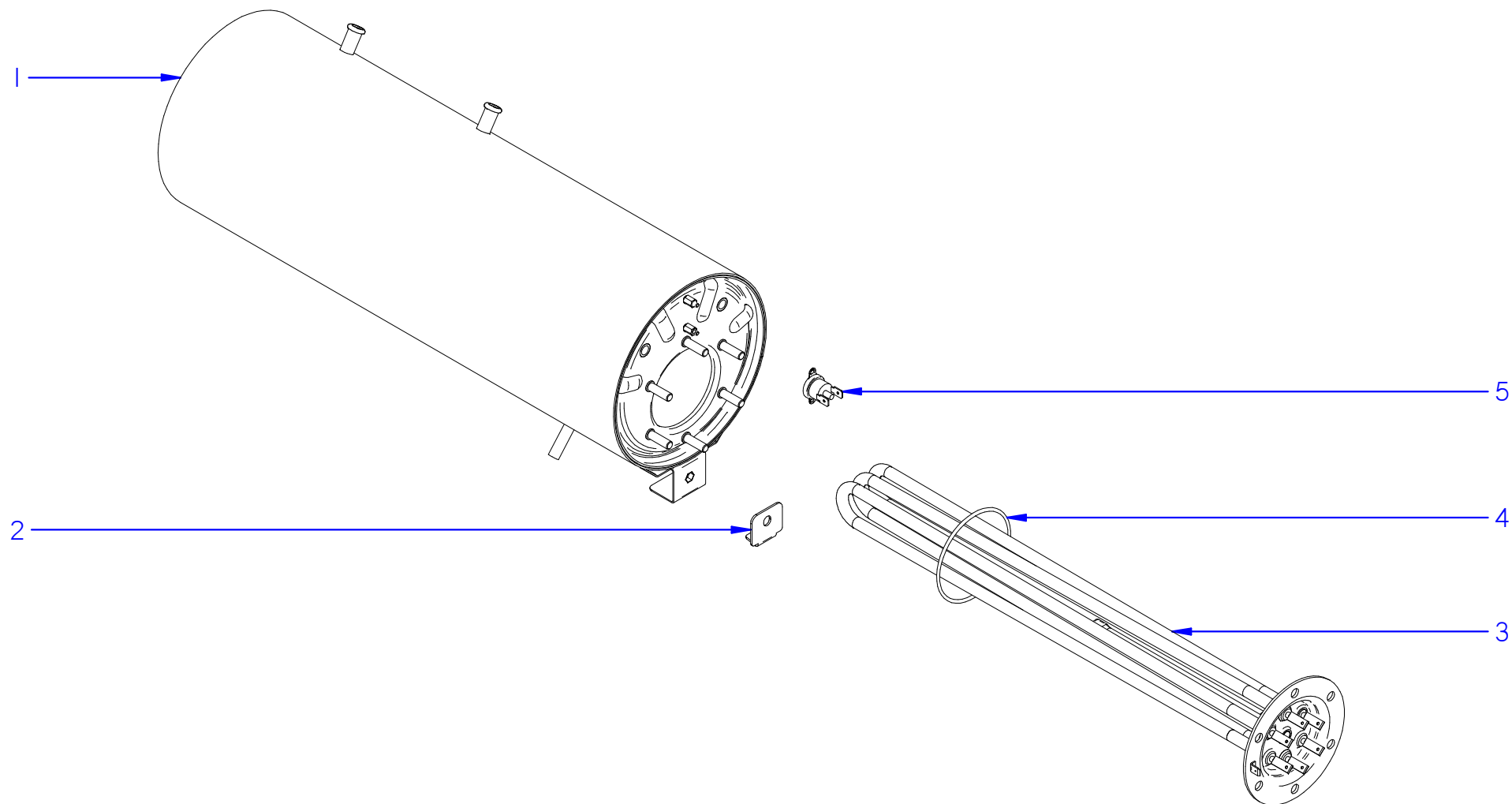
**Despiece técnico CO_500-501-502; COP-504; AD-505 /
Spare Parts CO 500-501-502; COP-504; AD-505**




LAVAVAJILLAS / DISHWASHER

CONJUNTO BASE (AD) / BASE ASSEMBLY (AD)

[illegible]

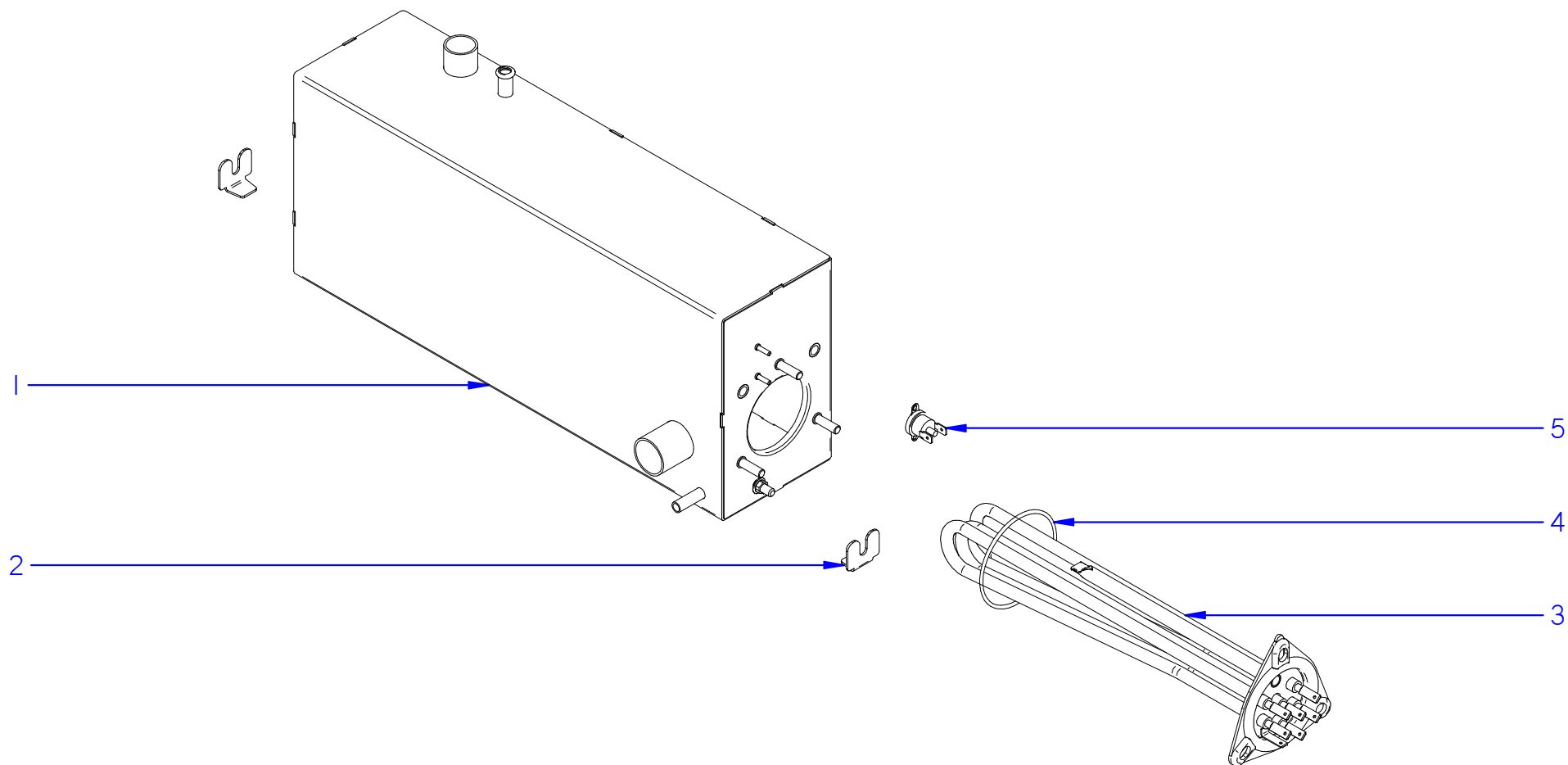



Fecha	Firma	CO_500-501-502	Página	FAGOR  FAGOR INDUSTRIAL
01-07-2018	B. Alcantara	CALDERÍN (CO) / HEATER (CO)	17	

**APARATO /
APPLIANCE**

LAVAVAJILLAS / DISHWASHER

ZONA / ZONE**CALDERÍN (CO) / HEATER (CO)**[illegible]

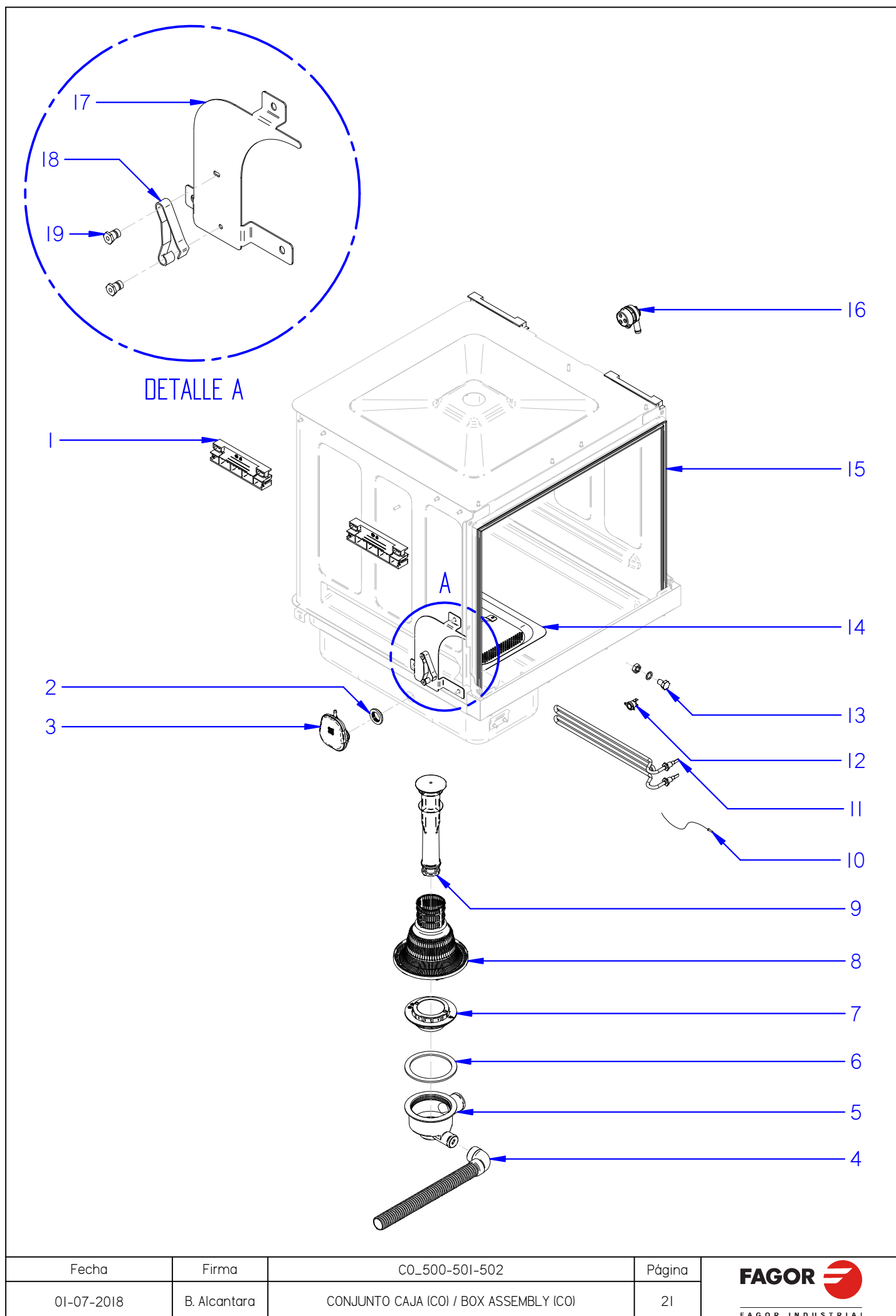



Fecha	Firma	COP-504; AD-505	Página	FAGOR  <small>FAGOR INDUSTRIAL</small>
01-07-2018	B. Alcantara	CALDERÍN (COP-AD) / HEATER (COP-AD)	19	

LAVAVAJILLAS / DISHWASHER

CALDERÍN (COP-AD) / HEATER (COP-AD)

[illegible]

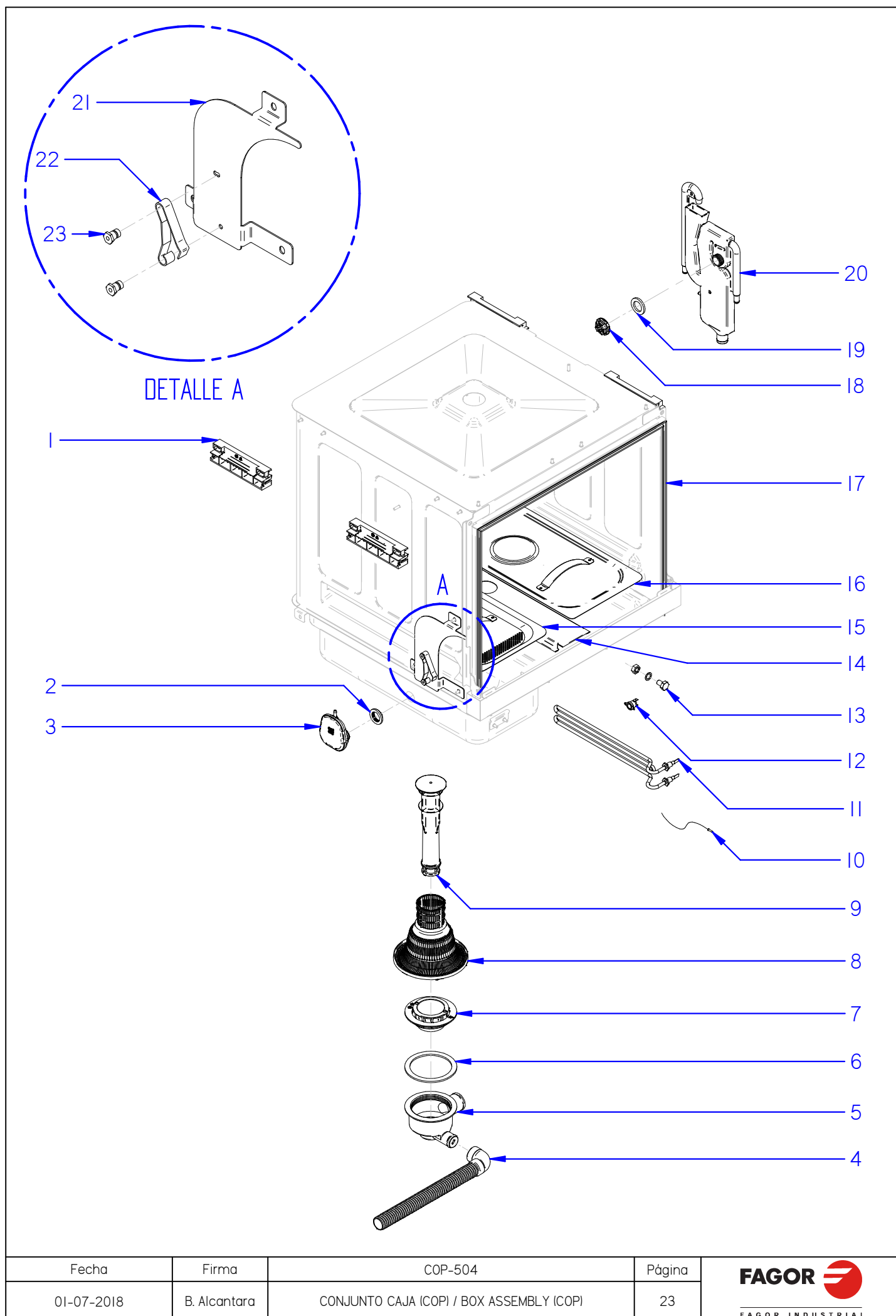



Fecha	Firma	CO_500-501-502	Página	FAGOR  FAGOR INDUSTRIAL
01-07-2018	B. Alcantara	CONJUNTO CAJA (CO) / BOX ASSEMBLY (CO)	21	

LAVAVAJILLAS / DISHWASHER

CONJUNTO CAJA (CO) / BOX ASSEMBLY (CO)
--

[illegible]

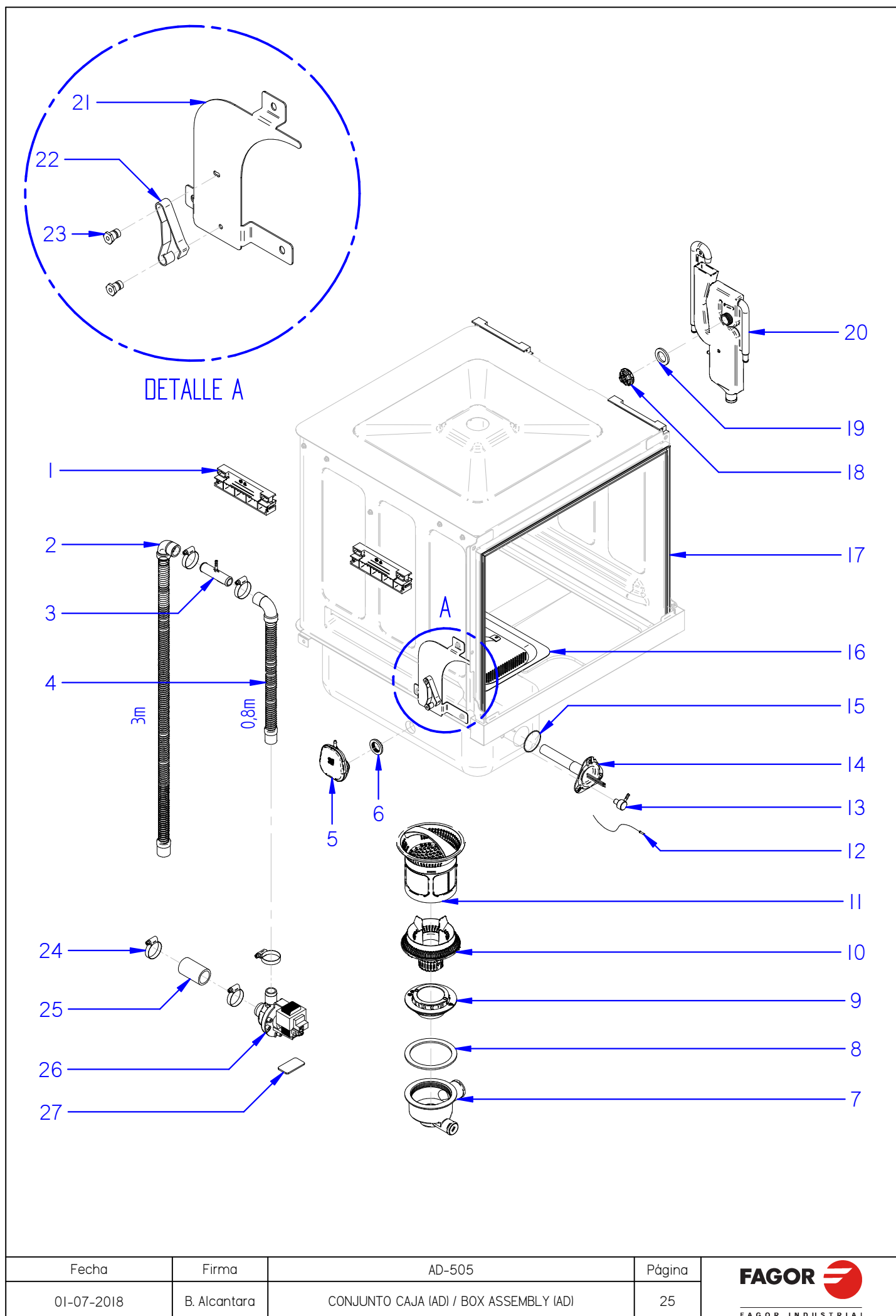


Fecha	Firma	COP-504	Página	FAGOR  FAGOR INDUSTRIAL
01-07-2018	B. Alcantara	CONJUNTO CAJA (COP) / BOX ASSEMBLY (COP)	23	

LAVAVAJILLAS / DISHWASHER

CONJUNTO CAJA (COP) / BOX ASSEMBLY (COP)
--

[illegible]

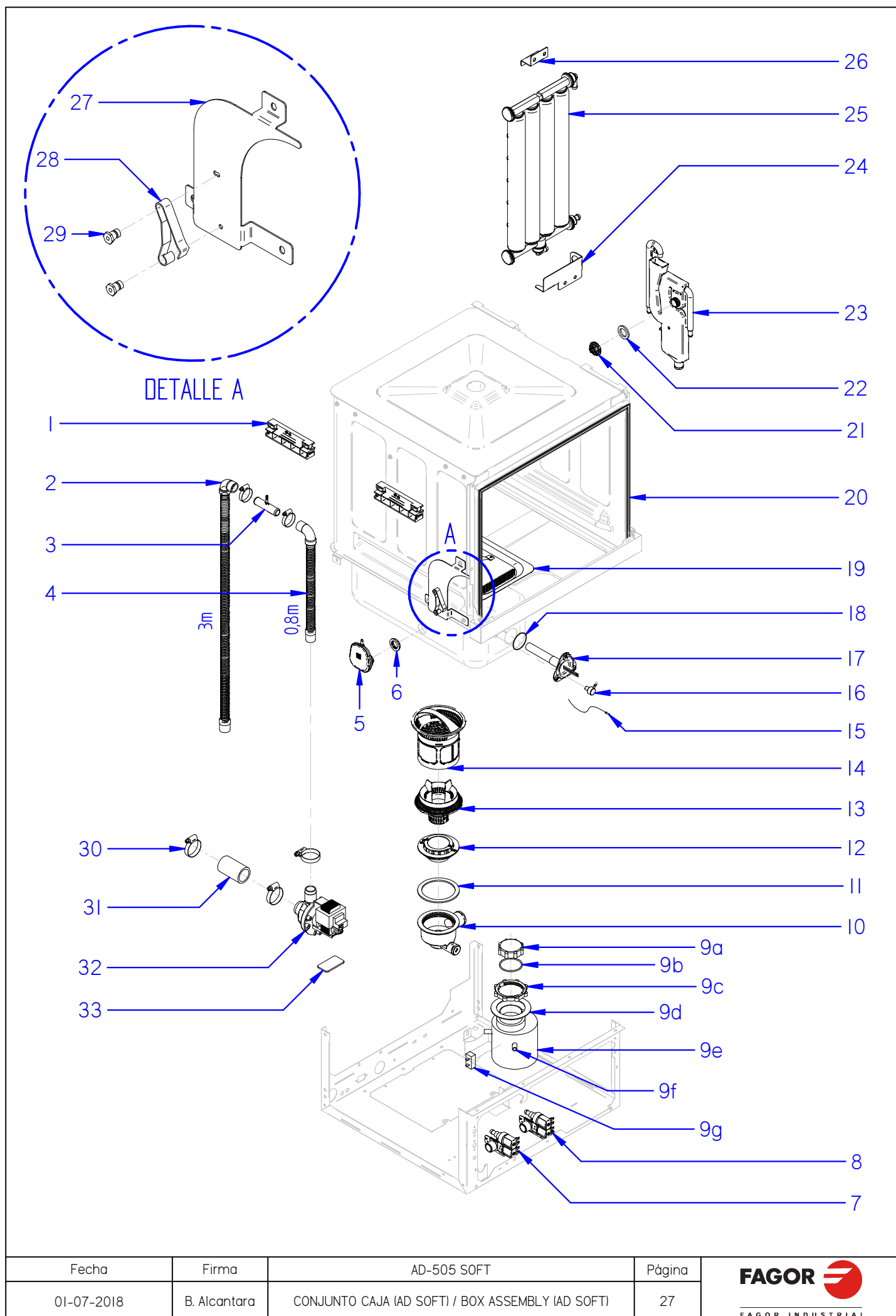



Fecha	Firma	AD-505	Página	FAGOR FAGOR INDUSTRIAL
01-07-2018	B. Alcantara	CONJUNTO CAJA (AD) / BOX ASSEMBLY (AD)	25	

LAVAVAJILLAS / DISHWASHER

CONJUNTO CAJA (AD) / BOX ASSEMBLY (AD)
--

[illegible]

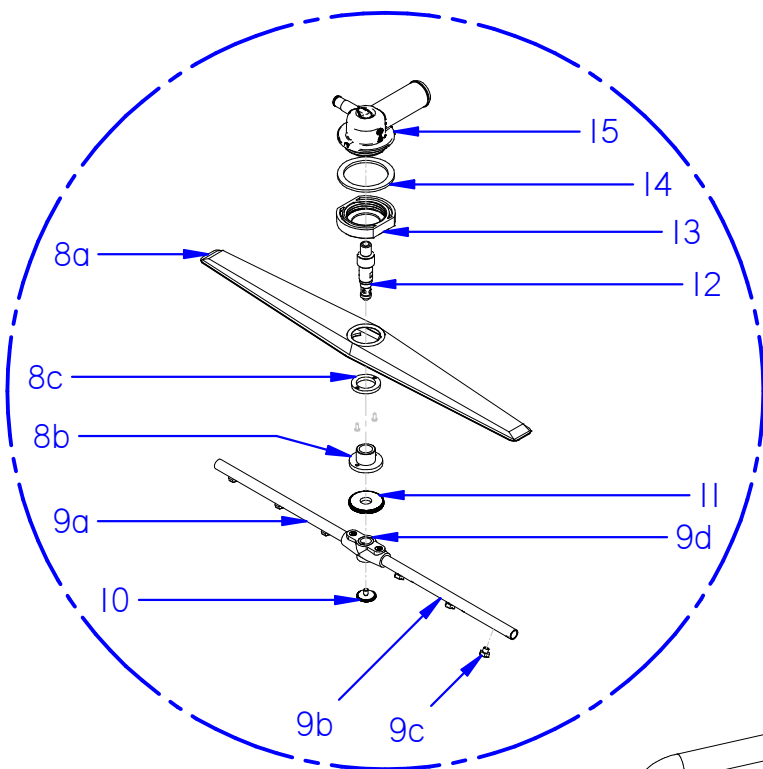


Fecha	Firma	AD-505 SOFT	Página	FAGOR  FAGOR INDUSTRIAL
01-07-2018	B. Alcantara	CONJUNTO CAJA (AD SOFT) / BOX ASSEMBLY (AD SOFT)	27	

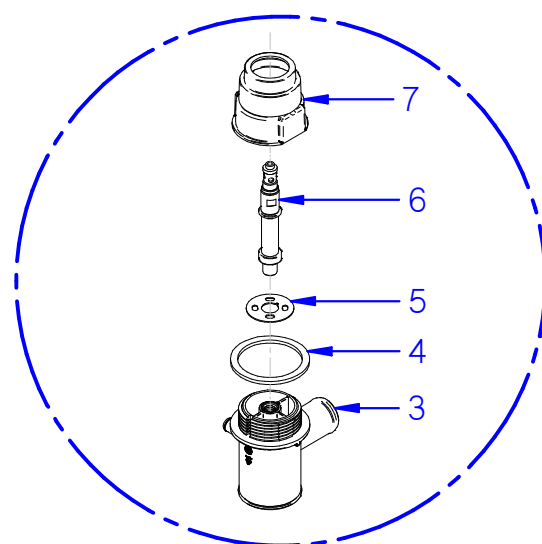
LAVAVAJILLAS / DISHWASHER

CONJUNTO CAJA (AD SOFT) / BOX ASSEMBLY (AD SOFT)
--

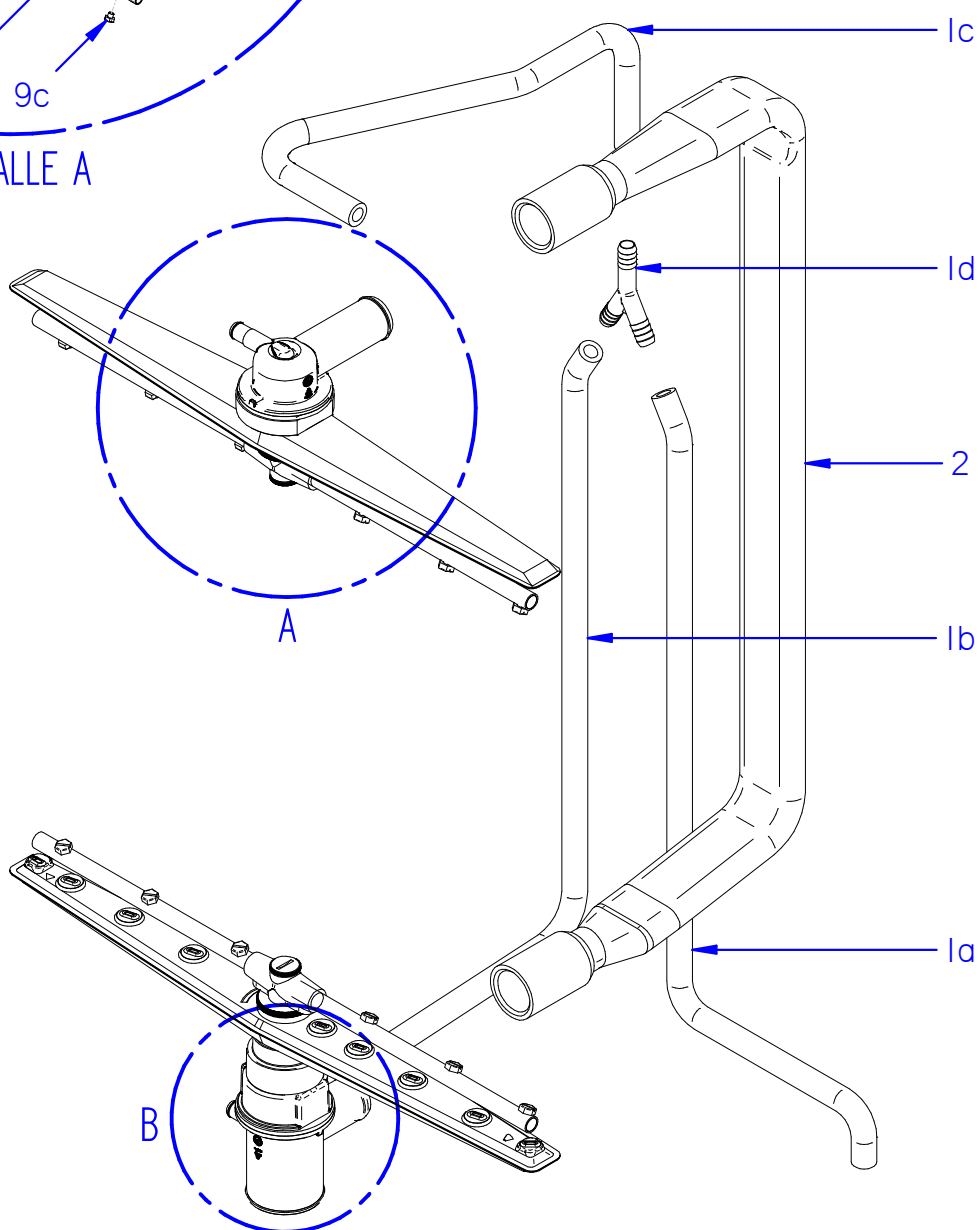
[illegible]



DETALLE A




DETALLE B



A

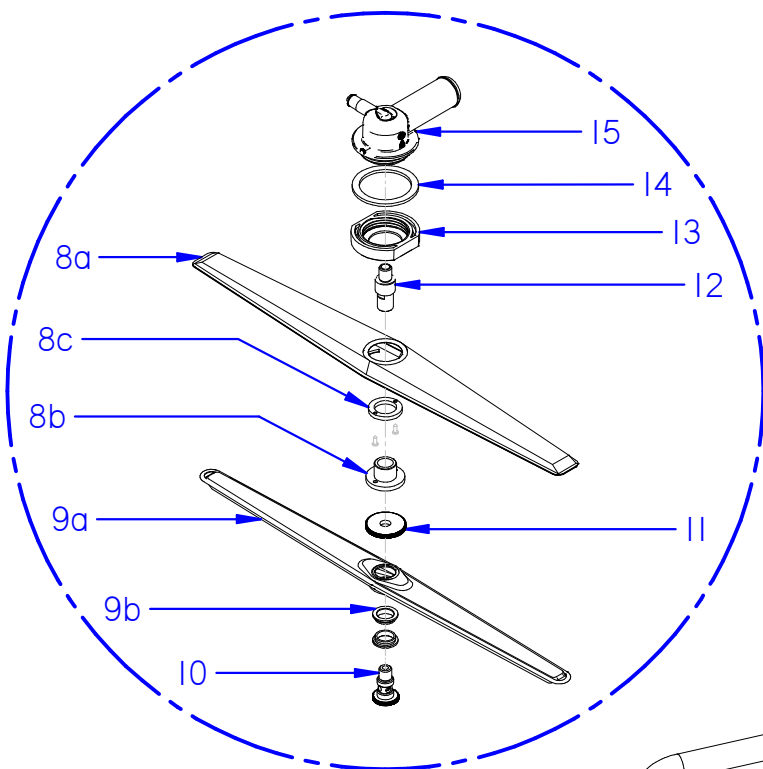
B

Fecha	Firma	CO_500-501-502	Página	FAGOR  FAGOR INDUSTRIAL
01-07-2018	B. Alcantara	CONJUNTO HIDRÁULICO (CO) / HYDRAULIC ASSEMBLY (CO)	29	

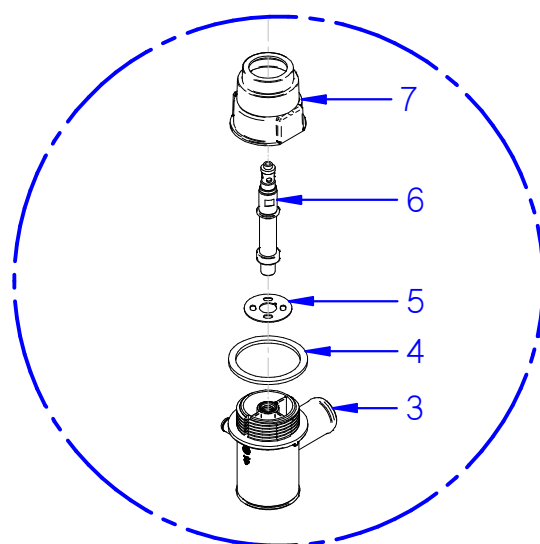
LAVAVAJILLAS / DISHWASHER

CONJUNTO HIDRÁULICO (CO) / HYDRAULIC ASSEMBLY (CO)

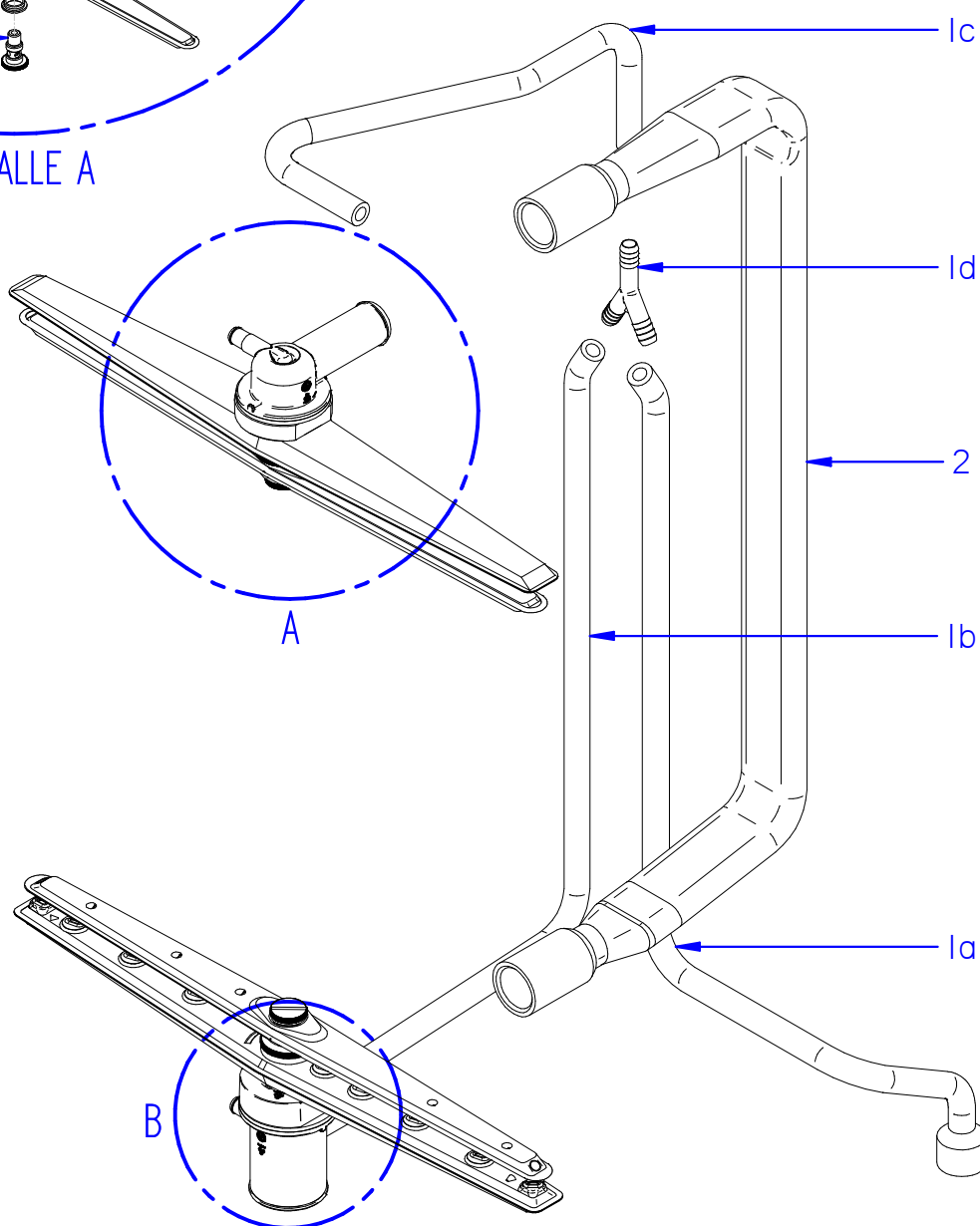
**Despiece técnico CO_500-501-502; COP-504; AD-505 /
Spare Parts CO_500-501-502; COP-504; AD-505**



DETALLE A




DETALLE B



A

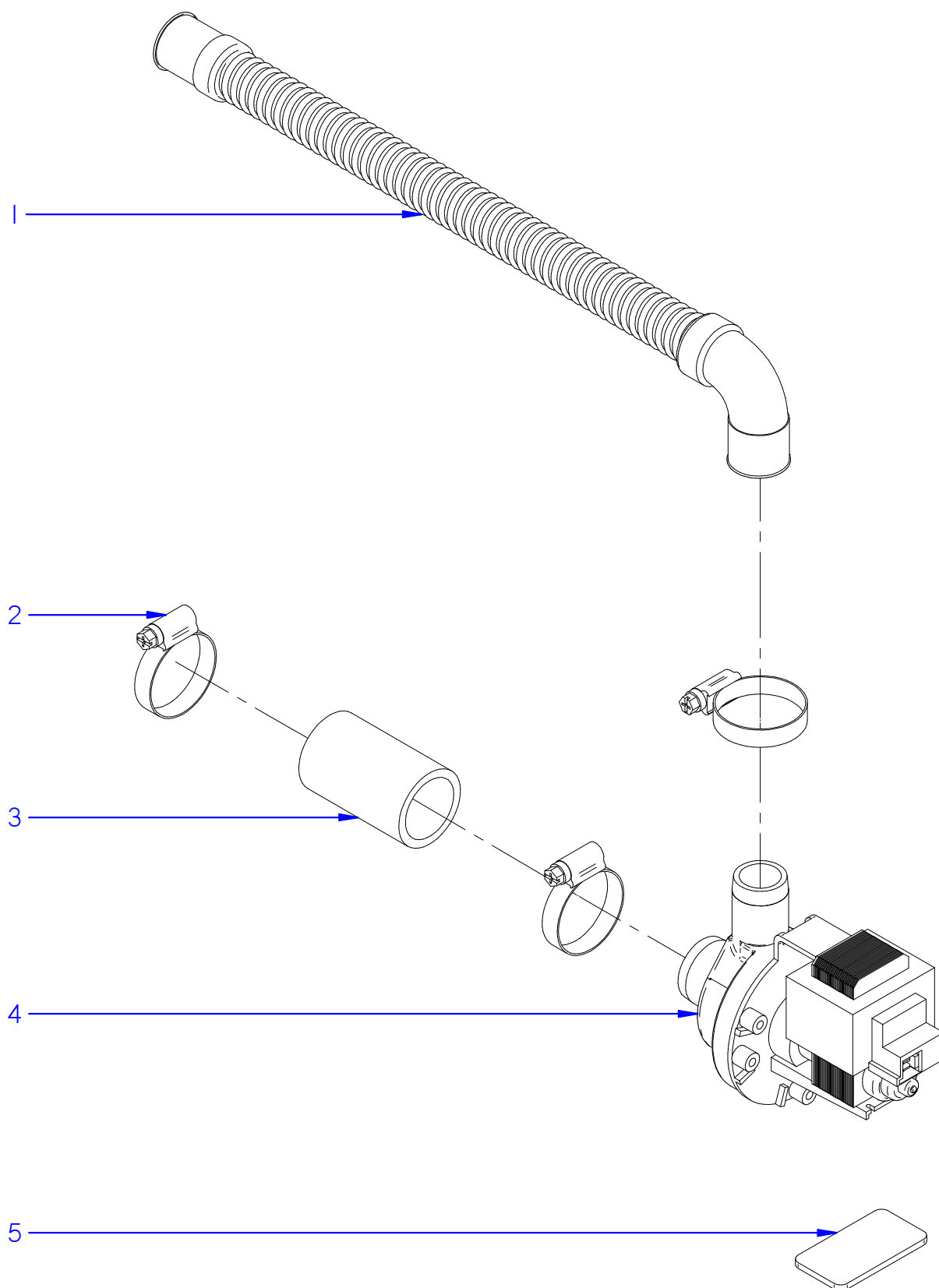
B

Fecha	Firma	COP-504; AD-505	Página	FAGOR  FAGOR INDUSTRIAL
01-07-2018	B. Alcantara	CONJUNTO HIDRÁULICO (COP-AD) / HYDRAULIC ASSEMBLY (COP-AD)	31	


LAVAVAJILLAS / DISHWASHER

<p align="center">CONJUNTO HIDRÁULICO (COP-AD) / HYDRAULIC ASSEMBLY (COP-AD)</p>

[illegible]



*KIT OPCIONAL EN MODELOS CO-COP

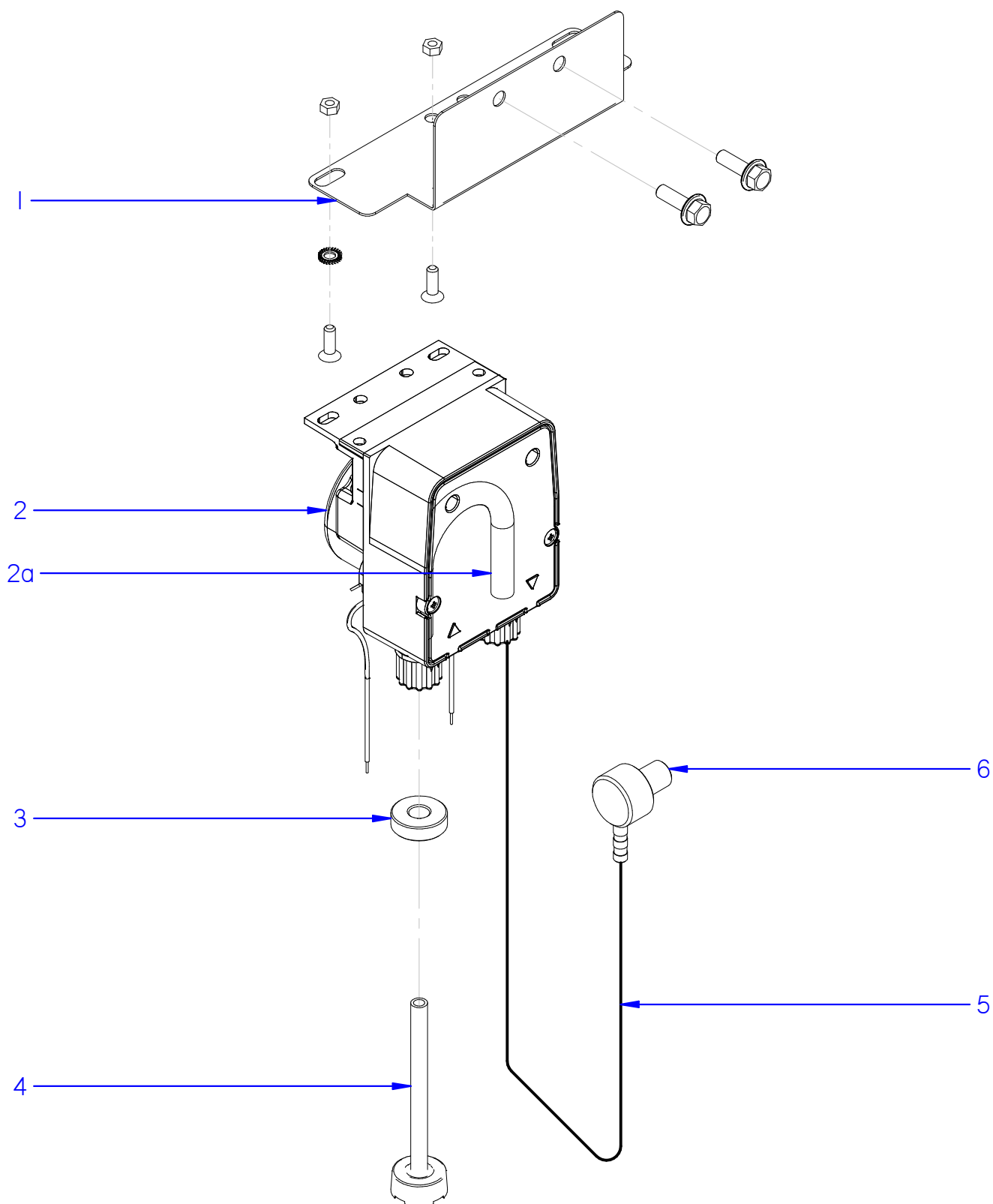
Fecha	Firma	CO_500-501-502; COP-504	Página	FAGOR  <small>FAGOR INDUSTRIAL</small>
01-07-2018	B. Alcantara	KIT BOMBA DESAGÜE / DRAINAGE PUMP KIT	33	

**APARATO /
APPLIANCE**

LAVAJILLAS / DISHWASHER


ZONA / ZONE

KIT BOMBA DESAGÜE (BD) / DRAINAGE PUMP KIT (BD)[illegible]



*INCLUIDO EN MODELOS AD

*KIT OPCIONAL EN MODELOS CO-COP

Fecha	Firma	CO_500-501-502; COP-504	Página	FAGOR  <small>FAGOR INDUSTRIAL</small>
01-07-2018	B. Alcantara	KIT DOSIFICADOR DETERGENTE / SOAP DISPENSER KIT	35	

**APARATO /
APPLIANCE**

LAVAJILLAS / DISHWASHER

ZONA / ZONE

KIT DOSIFICADOR DETERGENTE (DD) / SOAP DISPENSER KIT (DD)[illegible]

**APARATO /
APPLIANCE**

LAVAJILLAS / DISHWASHER

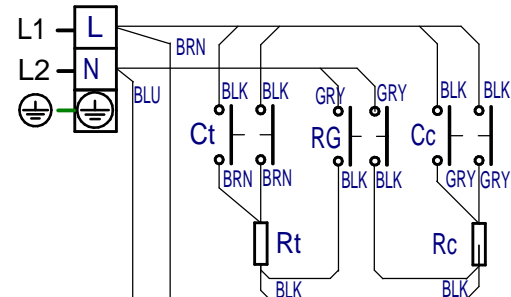
ZONA / ZONE**VARIOS / MISCELLANEOUS**[illegible]

**APARATO /
APPLIANCE**
LAVAVAJILLAS / DISHWASHER
ZONA / ZONE
REPUESTOS RECOMENDADOS / RECOMMENDED SPARE PARTS

ITEM	CODIGO REFERENCE	DENOMINACIÓN	DENOMINATION	CO-500	CO-501	CO-502	COP-504	AD-505	AD-505 SOFT									ELIMINADO ELIMINATED	INTRODUCIDO INTRODUCED	ZONA / ZONE
13	12189021	TARJETA CONTROL 230V AC 50/60Hz	CONTROL CARD 230V AC 50/60Hz	1	1	-	-	-	-											portamandos (CO) / control holder (CO)
1	12023803	PRESOSTATO 1.4-6.3bar SIMPLE UL	PRESSURE GAUGE 1.4-6.3bar SIMPLE UL	-	-	-	1	-	-											portamandos (CO-COP) / control holder (CO-COP)
7a	12024028	VISUALIZADOR	DISPLAY	-	-	1	1	-	-											portamandos (CO-COP) / control holder (CO-COP)
9	12185533	TARJETA CONTROL 230V AC 50/60Hz	CONTROL CARD 230V AC 50/60Hz	-	-	1	1	-	-											portamandos (CO-COP) / control holder (CO-COP)
1	12042019	PRESOSTATO 0,3bar SIMPLE	SIMPLE PRESSURE GAUGE 0,3bar	-	-	-	-	2	-											portamandos (AD) / control holder (AD)
3	12120189	TARJETA CONTROL 12V DC SOFT	CONTROL CARD 12V DC SOFT	-	-	-	-	-	1											portamandos (AD) / control holder (AD)
7a	12094036	BACKLIGHT	BACKLIGHT	-	-	-	-	1	-											portamandos (AD) / control holder (AD)
7b	12048027	VISUALIZADOR	DISPLAY	-	-	-	-	1	-											portamandos (AD) / control holder (AD)
10	12189023	TARJETA CONTROL 230V AC 50/60Hz	CONTROL CARD 230V AC 50/60Hz	-	-	-	-	1	-											portamandos (AD) / control holder (AD)
4	12043287	BOMBA LAVADO 230V 50Hz	WASHING PUMP 230V 50Hz	1	1	1	-	-	-											conjunto base (CO) / base assembly (CO)
4	12102834	BOMBA LAVADO 220V 60Hz	WASHING PUMP 220V 60Hz	1	1	1	-	-	-											conjunto base (CO) / base assembly (CO)
11	12161299	TERMOSTATO TANQUE 60°	TANK THERMOSTAT 60°	1	1	1	-	-	-											conjunto base (CO) / base assembly (CO)
12	12134992	TERMOSTATO CALDERÍN 85°	HEATER THERMOSTAT 85°	1	1	1	-	-	-											conjunto base (CO) / base assembly (CO)
15	12133010	DOSIFICADOR ABRILLANTADOR	POLISHER DISPENSER	1	1	1	-	-	-											conjunto base (CO) / base assembly (CO)
16	12096968	PRESOSTATO 1.4-6.3bar SIMPLE UL	PRESSURE GAUGE 1.4-6.3bar SIMPLE UL	1	1	1	-	-	-											conjunto base (CO) / base assembly (CO)
17	12219343	CONJUNTO ELECTROV. + REGUL. 10L	ELECTROV. + REGUL. 10L ASSEMBLY	1	1	1	-	-	-											conjunto base (CO) / base assembly (CO)
4	12043287	BOMBA LAVADO 230V 50Hz	WASHING PUMP 230V 50Hz	-	-	-	1	-	-											conjunto base (COP) / base assembly (COP)
4	12102834	BOMBA LAVADO 220V 60Hz	WASHING PUMP 220V 60Hz	-	-	-	1	-	-											conjunto base (COP) / base assembly (COP)
12	12161299	TERMOSTATO TANQUE 60°	TANK THERMOSTAT 60°	-	-	-	1	-	-											conjunto base (COP) / base assembly (COP)
13	12134992	TERMOSTATO CALDERÍN 85°	HEATER THERMOSTAT 85°	-	-	-	1	-	-											conjunto base (COP) / base assembly (COP)
16	12096968	PRESOSTATO 1.4-6.3bar SIMPLE UL	PRESSURE GAUGE 1.4-6.3bar SIMPLE UL	-	-	-	1	-	-											conjunto base (COP) / base assembly (COP)
17	12132254	DOSIF. ABRILLANTADOR PERISTALTICO	PERISTALTIC POLISHER DISPENSER	-	-	-	1	-	-											conjunto base (COP) / base assembly (COP)
19	12219342	ELECTROVÁLVULA + REGULADOR. 4L/min	ELECTROVALVE + 4L/min REGULATOR	-	-	-	1	-	-											conjunto base (COP) / base assembly (COP)
23	12187518	BOMBA ACLARADO 50Hz	50Hz RINSING PUMP	-	-	-	1	-	-											conjunto base (COP) / base assembly (COP)
23	12216217	BOMBA ACLARADO 60Hz	60Hz RINSING PUMP	-	-	-	1	-	-											conjunto base (COP) / base assembly (COP)
4	12043287	BOMBA LAVADO 230V 50Hz	WASHING PUMP 230V 50Hz	-	-	-	-	1	-											conjunto base (AD) / base assembly (AD)
4	12102834	BOMBA LAVADO 220V 60Hz	WASHING PUMP 220V 60Hz	-	-	-	-	1	-											conjunto base (AD) / base assembly (AD)
14	12132254	DOSIF. ABRILLANTADOR PERISTALTICO	PERISTALTIC POLISHER DISPENSER	-	-	-	-	1	-											conjunto base (AD) / base assembly (AD)
15	12133011	DOSIF. DETERGENTE	DETERGENT DISPENSER	-	-	-	-	1	-											conjunto base (AD) / base assembly (AD)
17	12219342	ELECTROVÁLVULA + REGULADOR. 4L/min	ELECTROVALVE + 4L/min REGULATOR	-	-	-	-	1	-											conjunto base (AD) / base assembly (AD)
21	12187518	BOMBA ACLARADO 50Hz	RINSING PUMP 50Hz	-	-	-	-	1	-											conjunto base (AD) / base assembly (AD)
21	12216217	BOMBA ACLARADO 60Hz	RINSING PUMP 60Hz	-	-	-	-	1	-											conjunto base (AD) / base assembly (AD)
3	12098741	RESISTENCIA MONOFÁSICA	SINGLE-PHASE RESISTOR	1	-	-	-	-	-											calderín (CO) / heater (CO)
3	12098745	RESISTENCIA TRIFÁSICA	THREE-PHASE RESISTOR	-	1	1	-	-	-											calderín (CO) / heater (CO)
4	12010051	JUNTA TÓRICA AN-36 282333	AN-36 282333 O-RING	1	1	1	-	-	-											calderín (CO) / heater (CO)
5	12096597	TERMOSTATO SEGURIDAD 110°	SAFETY THERMOSTAT 110°	1	1	1	-	-	-											calderín (CO) / heater (CO)
3	12090551	RESISTENCIA CALDERÍN ATMOS.	ATMOS. HEATER RESISTOR	-	-	-	-	1	1	-										calderín (COP-AD) / heater (COP-AD)
4	12118319	JUNTA TÓRICA ø57x6 NBR	ø57x6 NBR O-RING	-	-	-	1	1	-											calderín (COP-AD) / heater (COP-AD)
5	12090518	TERMOSTATO SEGURIDAD 95°	SAFETY THERMOSTAT 95°	-	-	-	-	1	1	-										calderín (COP-AD) / heater (COP-AD)
3	12166900	CAMARA PRESOSTATO	PRESSURE GAUGE CHAMBER	1	1	1	-	-	-											conjunto caja (CO) / box assembly (CO)
6	12041925	JUNTA CUBETA	BUCKET SEAL	1	1	1	-	-	-											conjunto caja (CO) / box assembly (CO)
10	12025036	CONJUNTO Sonda 64KOhm	64 KOhm PROBE ASSEMBLY	-	-	2	-	-	-											conjunto caja (CO) / box assembly (CO)
11	12159451	RESISTENCIA 230V 2.8Kw	RESISTOR 230V 2.8Kw	1	1	1	-	-	-											conjunto caja (CO) / box assembly (CO)
12	12096597	TERMOSTATO SEGURIDAD 110°	SAFETY THERMOSTAT 110°	1	1	1	-	-	-											conjunto caja (CO) / box assembly (CO)
16	12024568	VALVULA ANTIRETORNO	CHECK VALVE	1	1	1	-	-	-											conjunto caja (CO) / box assembly (CO)
3	12166900	CAMARA PRESOSTATO	PRESSURE GAUGE CHAMBER	-	-	-	1	-	-											conjunto caja (COP) / box assembly (COP)
6	12041925	JUNTA CUBETA	BUCKET SEAL	-	-	-	1	-	-											conjunto caja (COP) / box assembly (COP)

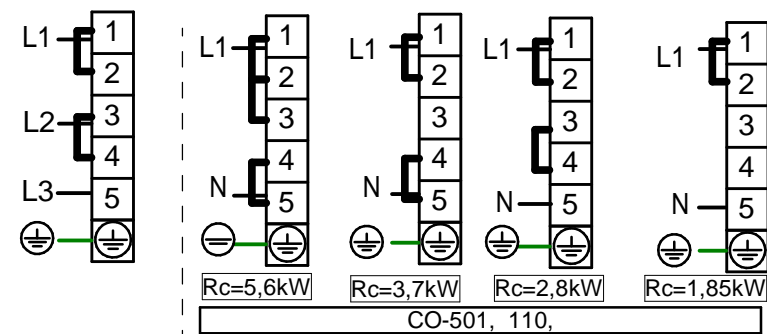
[illegible]

CO 500,

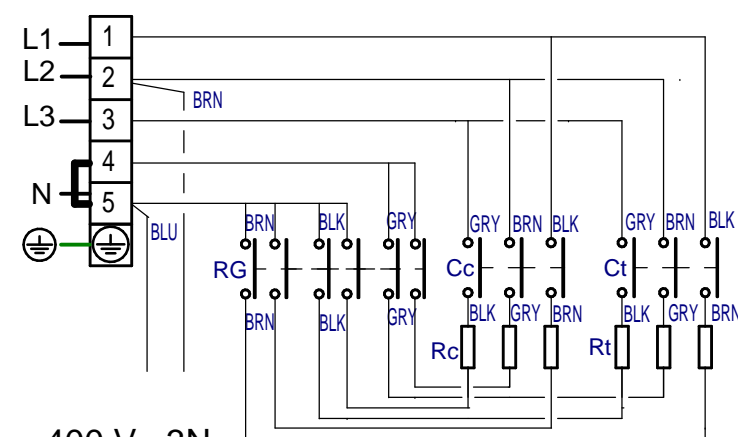


230 V, 1 N

CO 110

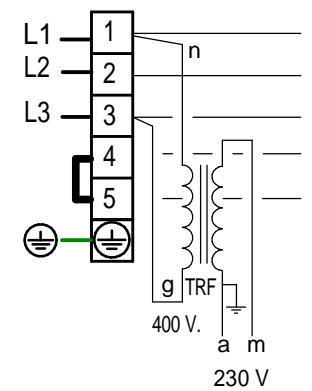


230 V, 1 N

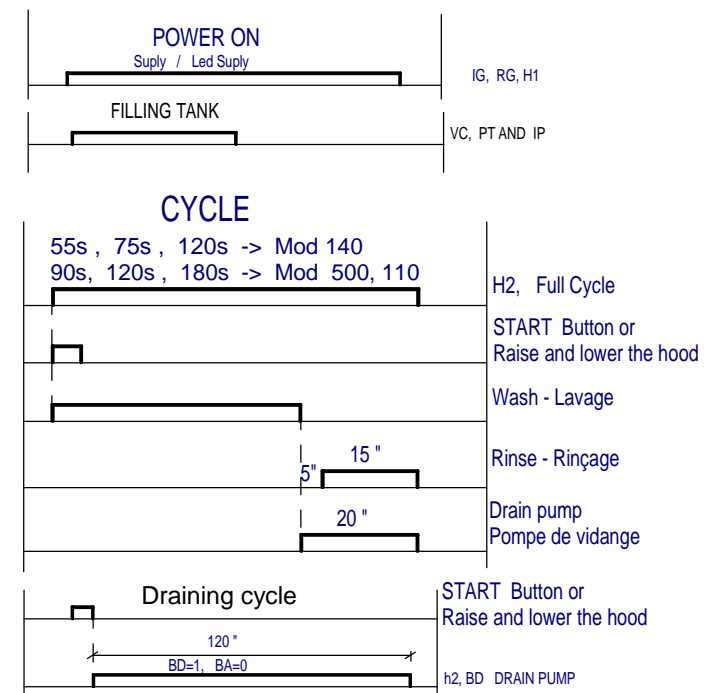
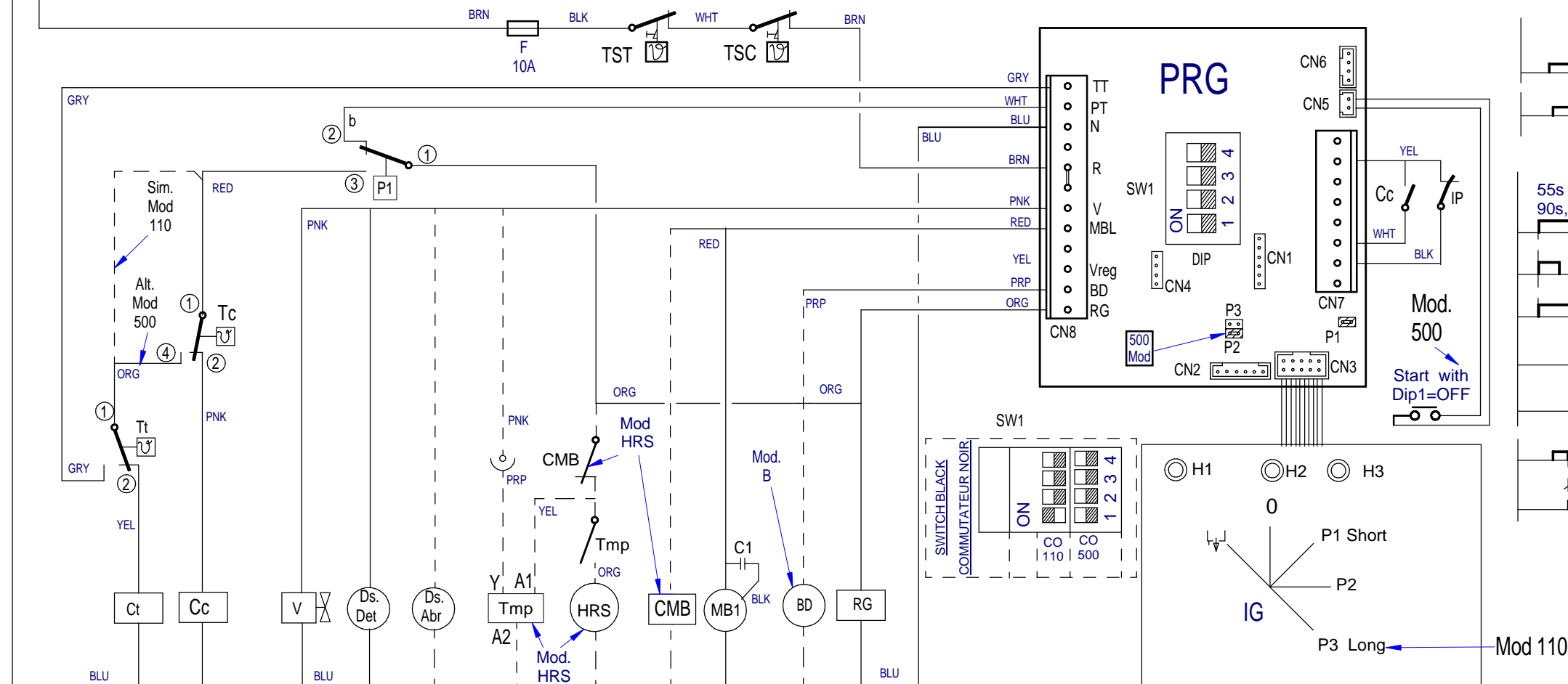


400 V, 3N

CO 110, MARINE

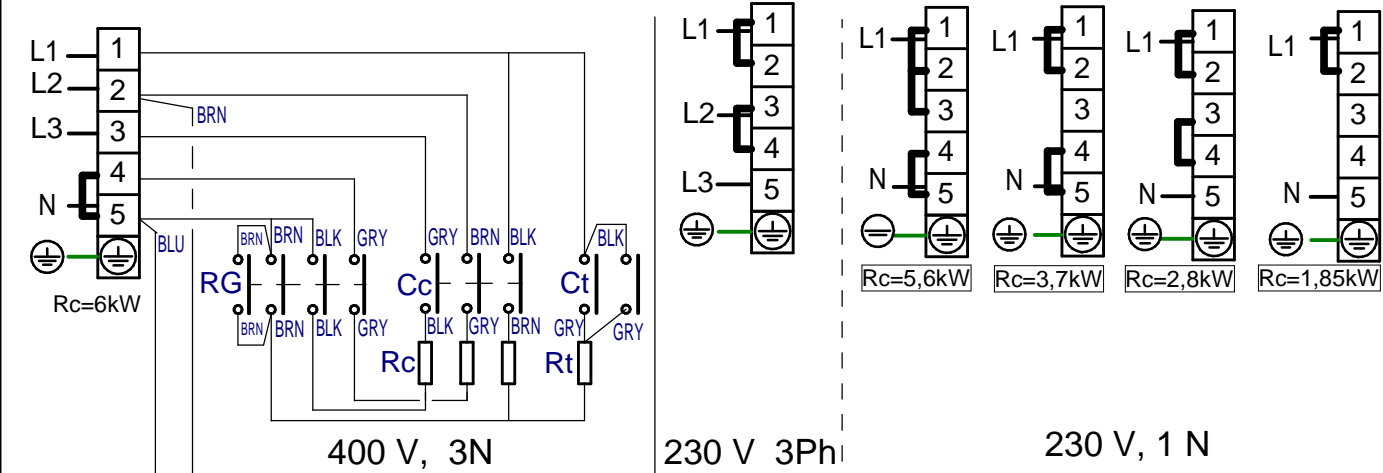


230 V



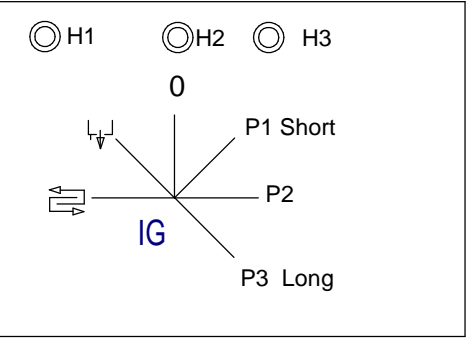
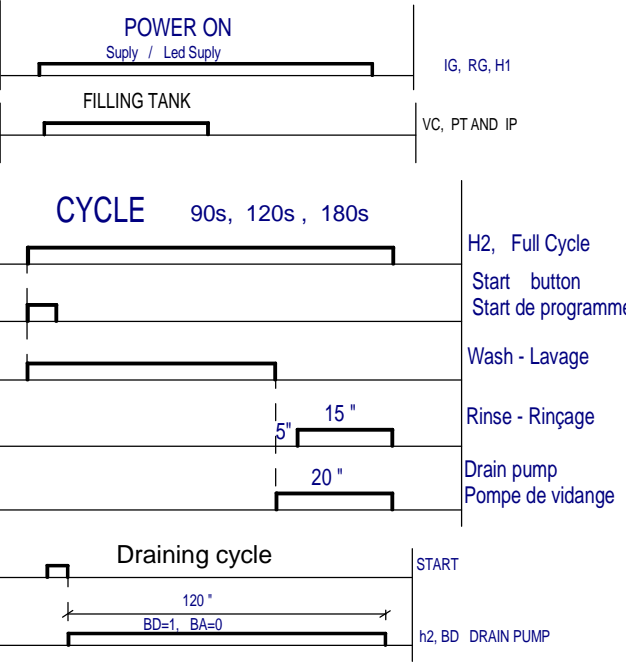
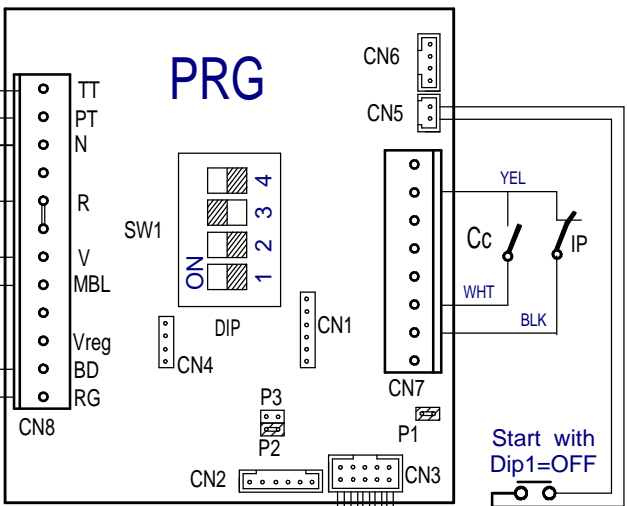
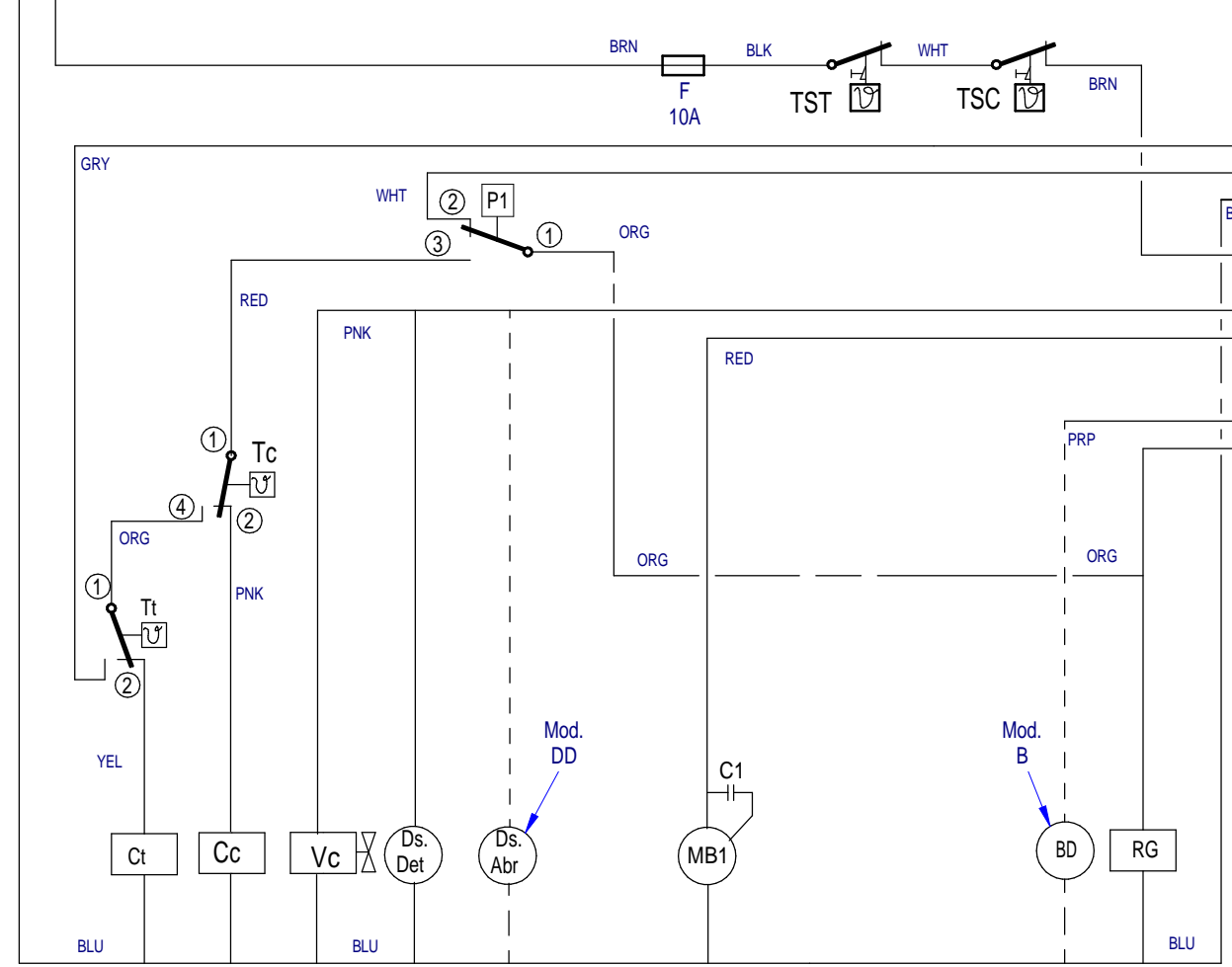
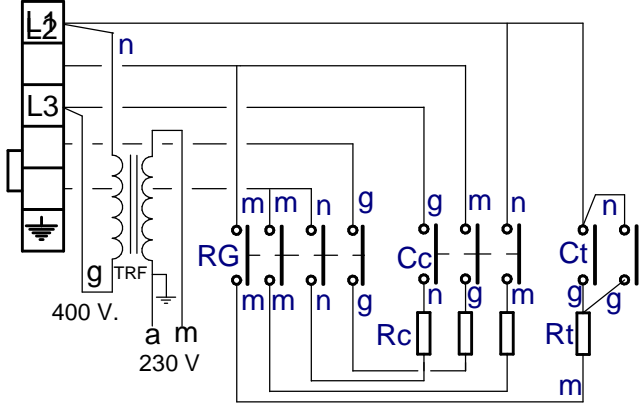
12187327

CO 501, B, DD



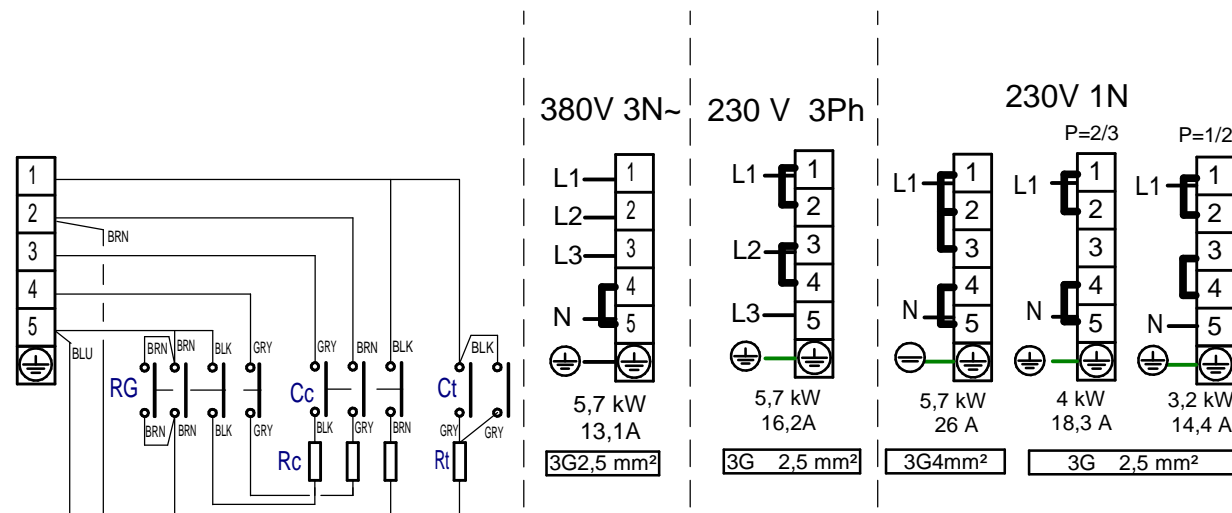
CO 501 MARINE

400 V. 3 Ph, Without Neutral

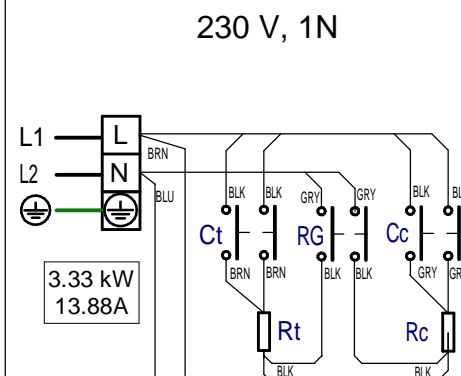


12134795

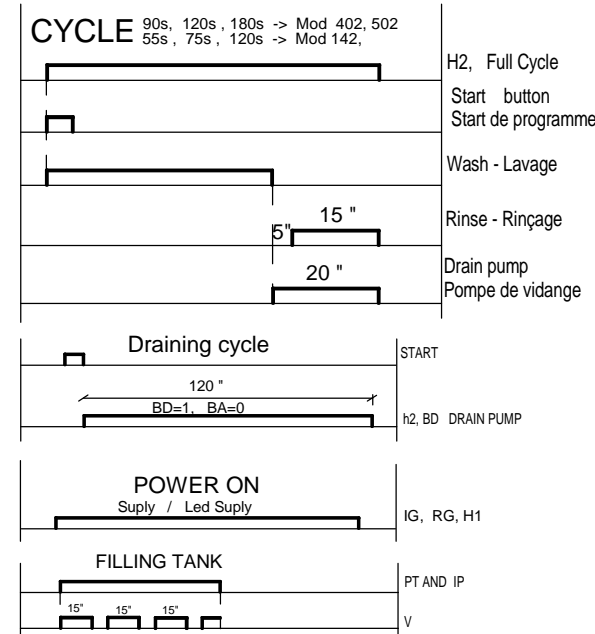
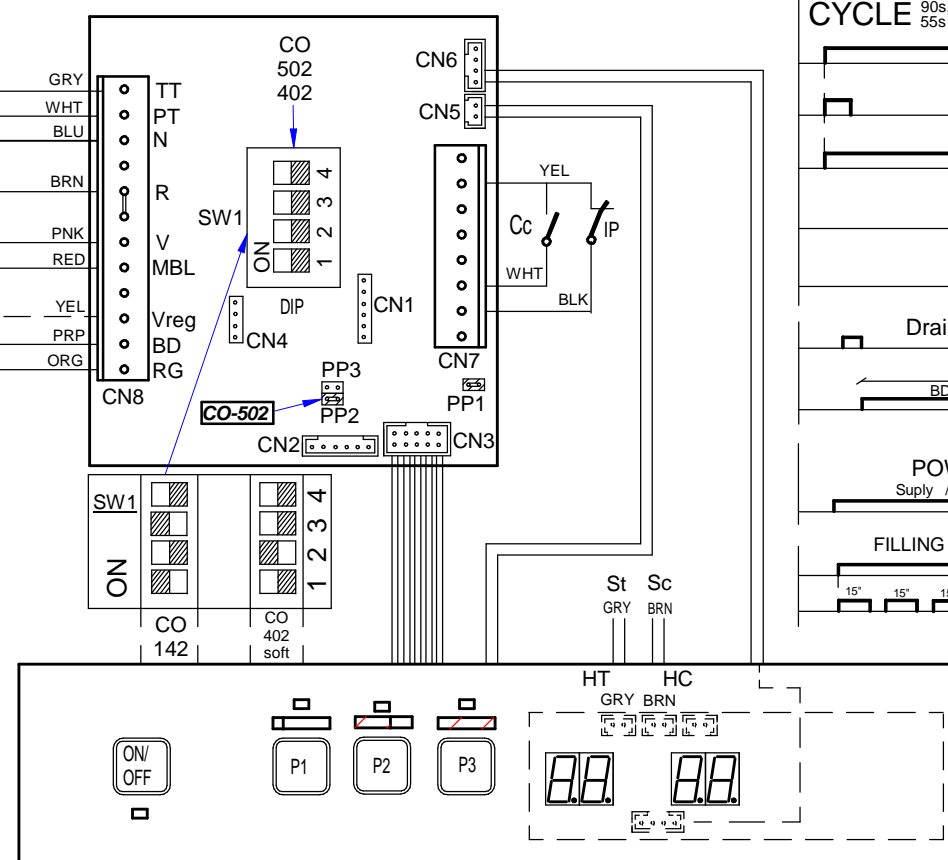
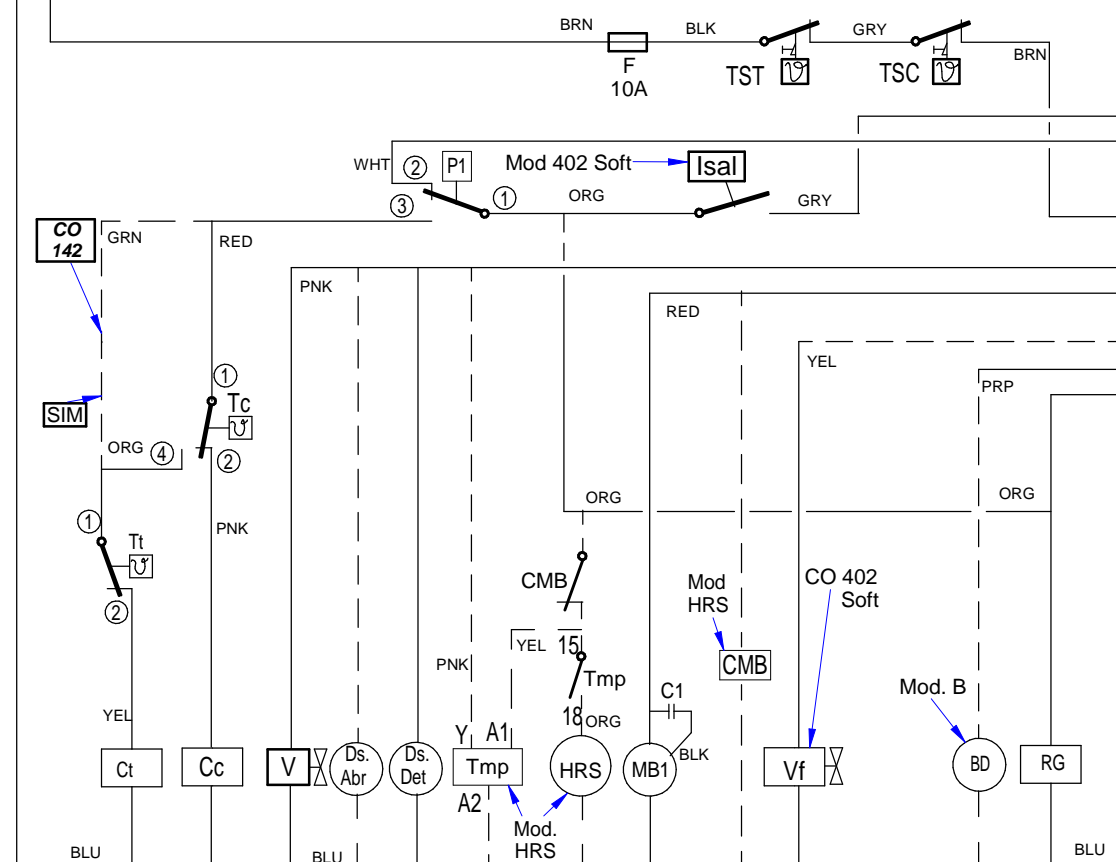
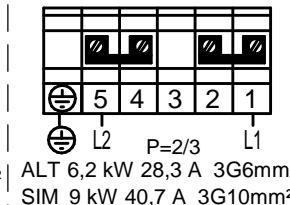
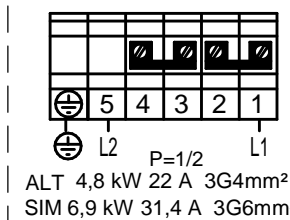
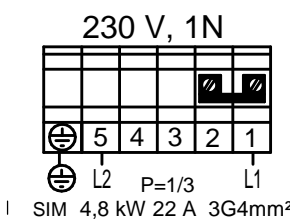
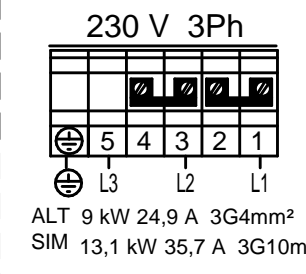
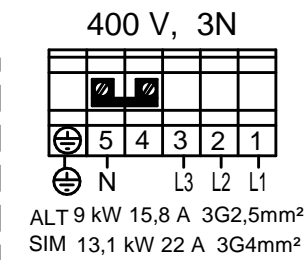
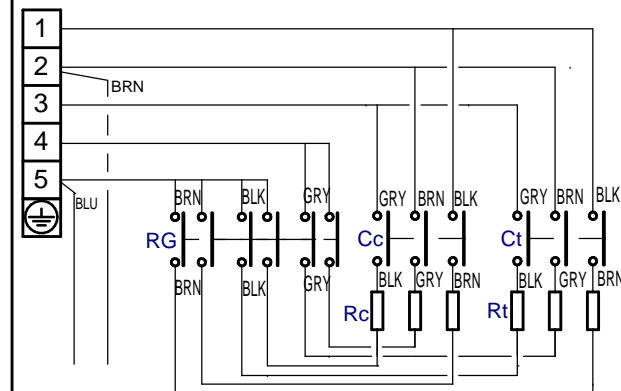
CO-502



CO-402

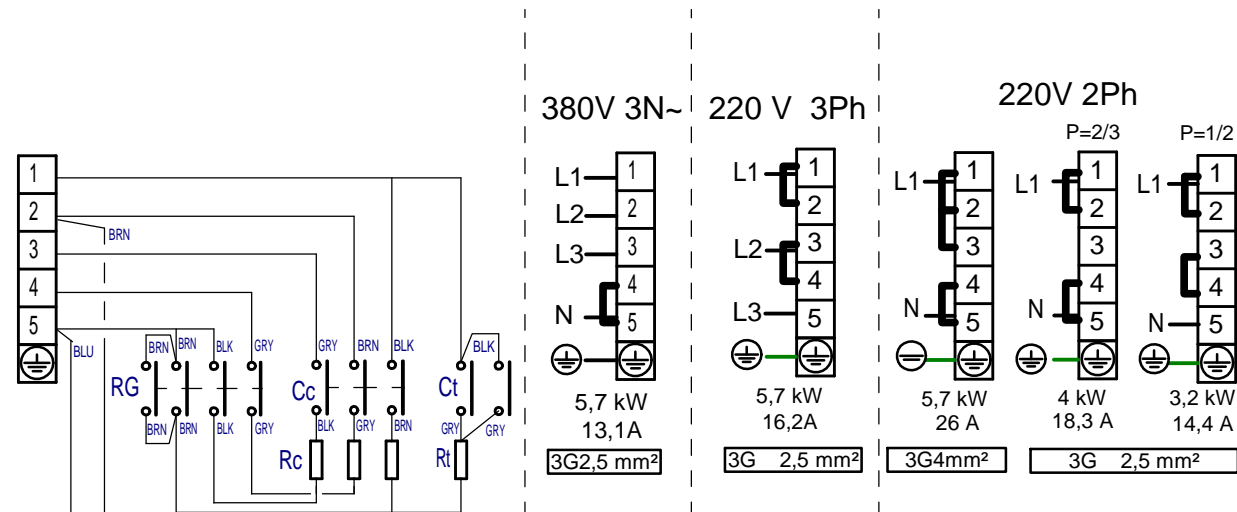


CO-142

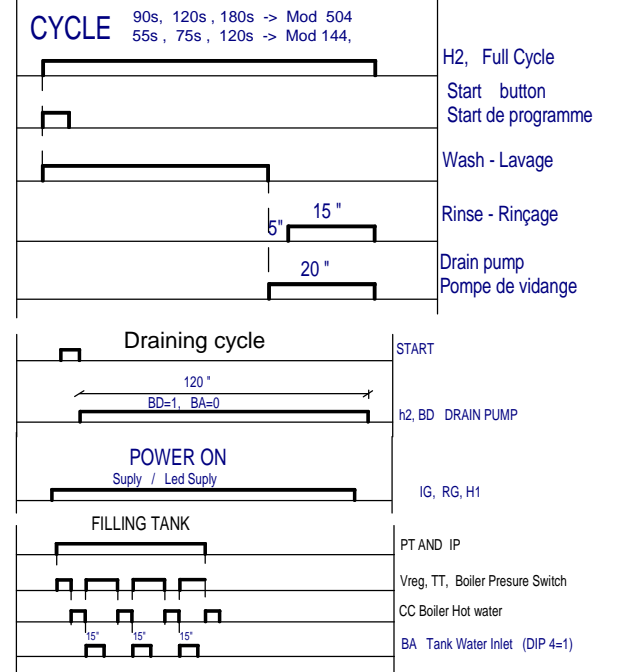
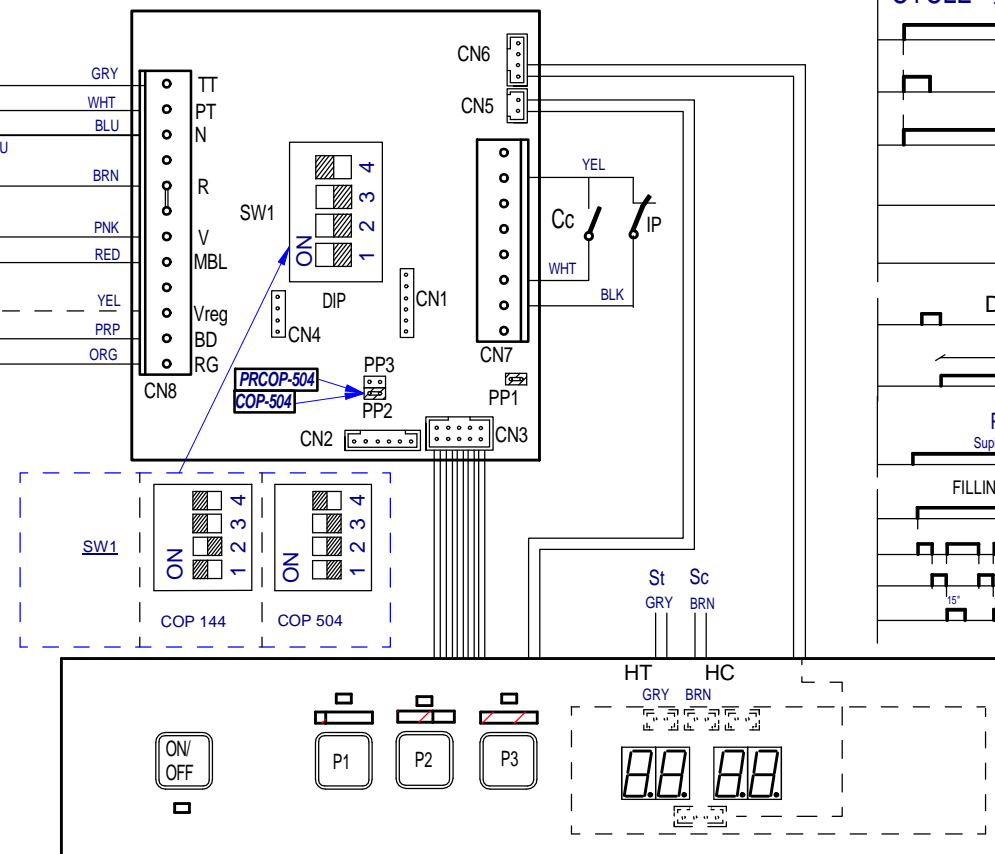
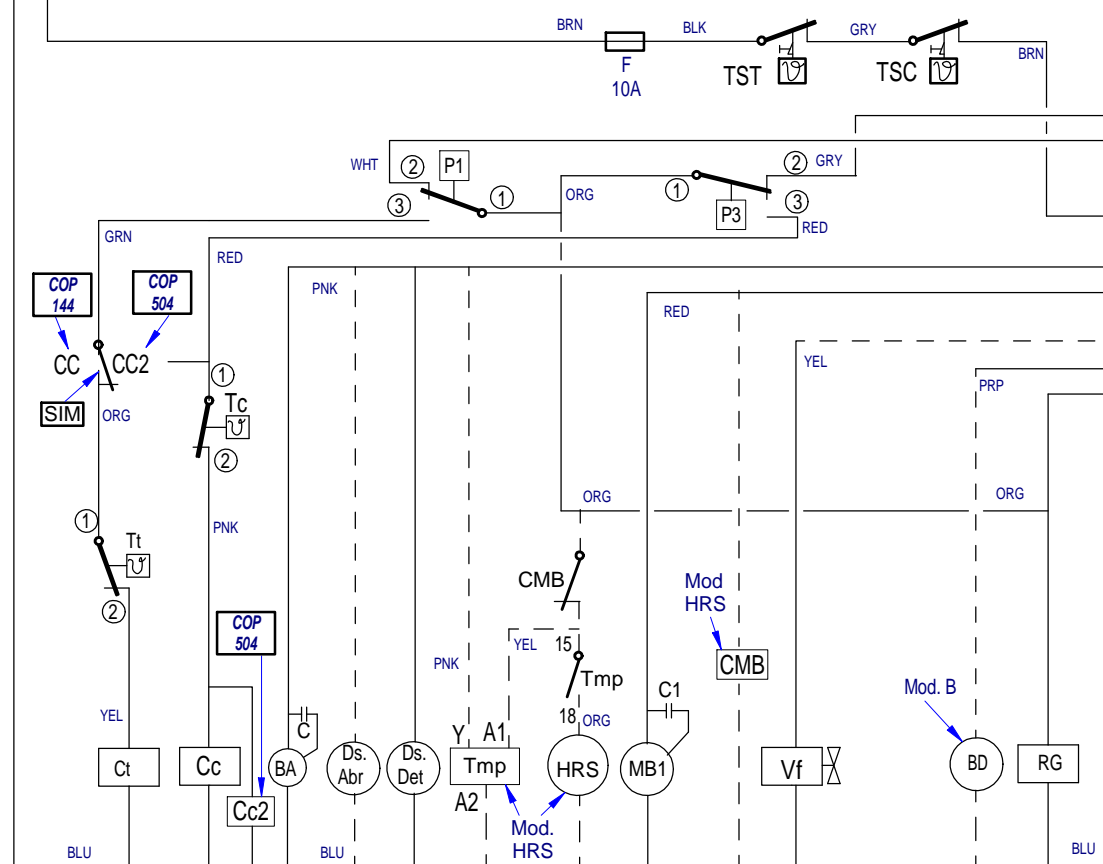
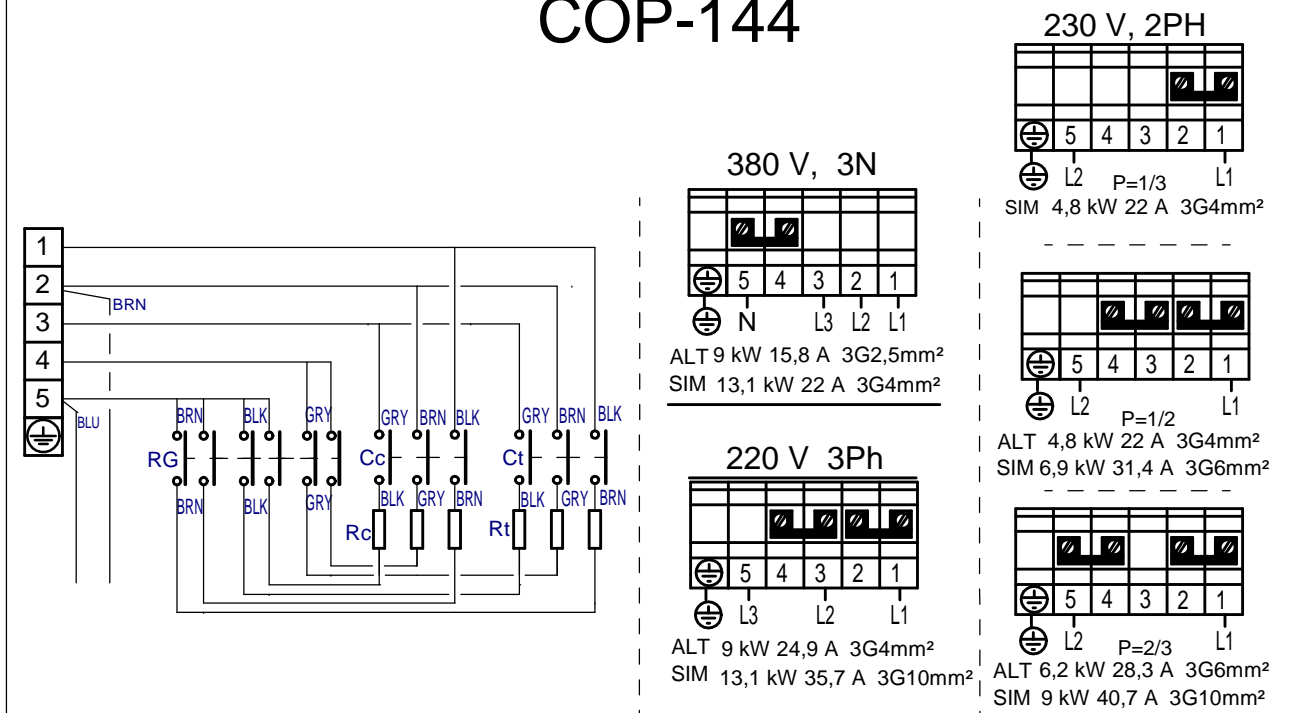


12121300

COP-504

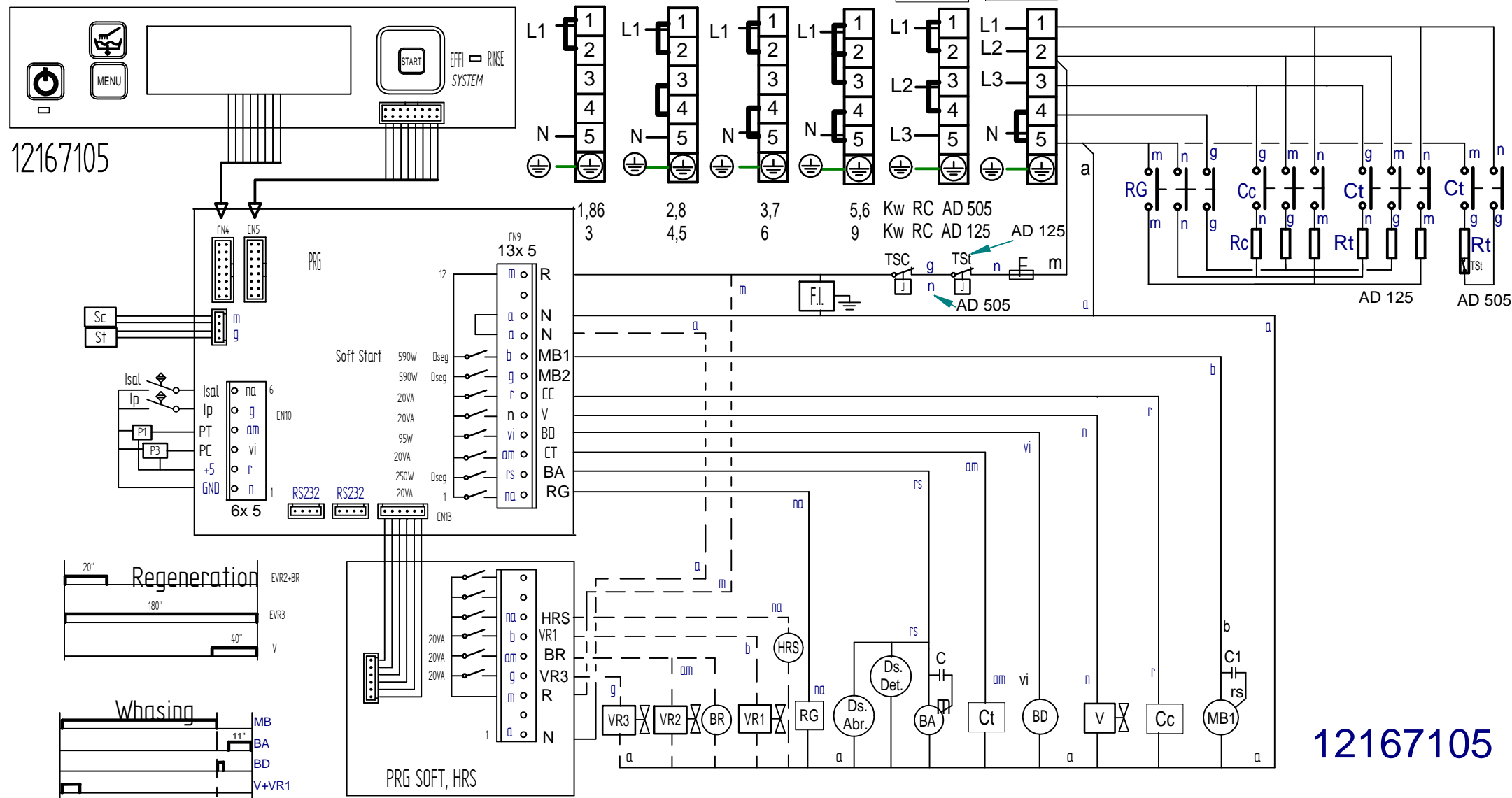


COP-144



12218817

AD 125, 505



12167105

Simb / LENG		ESPAÑOL	ENGLISH	FRANÇAIS
A,B (CCO)	=	Puntos de conexión con K1	Connection points with K1	Points de connexion K1
C1,C2,C3,C4	=	Condensador electrico	Electric condenser	Condensateur électrique
CA	=	Rele Auxiliar de Aclarado	Rinse Auxiliary Relay	Relais auxiliaire rinçage
CMBL1,2	=	Contactador Bomba lavado 1,2	Wash 1,2 Pump Contactor	Contacteur pompe lavage 1.2
CMBPL	=	Contactador Bomba PreLavado	Prewash Pump Contactor	Contacteur Pompe prélavage
CMEV	=	Contactador Motor Extractor de Vahos	Steam Exhaust Motor Contactor	Contacteur Moteur Extraction vapeur
CMS	=	Contactador Motor Secado	Drying Motor Contactor	Contacteur moteur Séchage
CMREC	=	Contactador Motor Recuperador	Contactor Motor Recover	Contacteur moteur Recuperateur
CRC11,12,13	=	Contactador Calentamiento Calderin	Boiler Heating Contactor	Contacteur Chauffage Chaudière
CRS11,12,21,22	=	Contactador Calentamiento Secado 1,2	Drying 1, 2 Heating Contactor	Contacteur chauffage séchage 1.2
CRTA1,2	=	Contactador Calentamiento Aclarado	Rinse heating Contactor	Contacteur chauffage Rinçage
CRT11,12	=	Contactador Calentamiento Tanque 1	Tank 1 Heating Contactor	Contacteur Chauffage Cuve 1
CRT21,22	=	Contactador Calentamiento Tanque 2	Tank 2 Heating Contactor	Contacteur Chauffage Cuve 2
DS.ABR	=	Dosificador Abrillantador	Rinse doser	Doseur tensoactive
DS.DET	=	Dosificador Detergente	Detergent doser	Doseur détergent
F	=	Fusible	Fuse	Fusible
FMEV	=	Termico Motor Extractor	Steam Exhaust Motor Thermal Overload	Thermique Moteur Extraction vapeur
FML1,2	=	Termico Motor Bomba Lavado1,2	Wash 1,2 Pump Motor Thermal Overload	Thermique Moteur pompe lavage 1.2
FMS1,2	=	Termico Motor Secado 1,2	Drying Motor Thermal Overload	Thermique du Moteur Séchage
FMREC	=	Termico Motor Recuperador	Recover Motor Thermal Overload	Thermique du Moteur Recuperateur
H1	=	Lampara Indicador Marcha	Operation light	Voyant de fonctionnement
H2	=	Lampara Indicador Atorado	Stuck Indicator Lamp	Voyant Bloqués
IA	=	Interruptor Accionamiento Aclarado	Rinsing actuator Switch	Interrupteur d'actionneur de rinçage
IE1,2	=	Pulsador Parada de emergencia 1,2	Emergency 1,2 stop push button	Bouton-poussoir Arrêt d'urgence 1,2
IG	=	Interruptor general.	Power On	Interrupteur général
IGS	=	Interruptor General de seguridad.	Disconnect Switch	Interrupteur Général de sécurité
IL	=	Interruptor Accionamiento Lavado	Wash actuator Switch	Interrupteur d'actionneur de lavage
IM / IP	=	Pulsador Marcha / Parada	Start / Stop push button	Bouton de démarrage / arrêt
IPA	=	Interruptor Puerta Lavado	Washer Door Switch	Interrupteur de porte de lavage
IPPL	=	Interruptor Puerta PreLavado	Prewash Door Switch	Interrupteur de porte prélavage
IPT1,2	=	Interruptor Puerta Tanque 1,2	Tank 1.2 Door Switch	Interrupteur de porte cuve 1.2
IR	=	Interruptor Retroceso Desenganche	Reverse stuck Switch	Interrupteur marche arrière à la blocage
ISV	=	Interruptor Seguridad Enganchon	Overload stuck Switch	Interrupteur marche à la blocage
PRG	=	Control Electronico	Electronic Control	Contrôle électronique
KA1, 2	=	Rele Auxiliar Llenado y Aclarado 1, 2	Fill and Rinse 1, 2 Auxiliary Relay	Relais auxiliaire remplissage et rinçage 1, 2
KP	=	Rele de Puerta	Door Relay	Relais de porte
KTT1	=	Rele Auxiliar Termostato Tanque1	Auxiliary Relay Tank Thermostat1	Thermostat Relais auxiliaire cuve 1
K1	=	Rele Auxiliar Generador Agua Caliente	Auxiliary Relay Hot Water Generator	Générateur auxiliaire Relais eau chaude
MBA	=	Moto Bomba Aclarado	Pump Rinsing	Pompe Rinçage
MBL1,2	=	Moto Bomba Lavado1,2	Washed Pump 1,2	Pompe de lavage 1,2
MBP	=	Moto Bomba Llenado	Filling Pump	Pompe de remplissage
MBPL	=	Moto Bomba PreLavado	Prewash Pump	Pompe à prélavage
MEV	=	Motor Extractor de Vahos	Steam extractor motor	Moteur extracteur vapeur
MREC	=	Motor Recuperador	Motor Recovery	Moteur Récupérateur
MS1,2	=	Motor Secado 1,2	Drying motor 1,2	Moteur de séchage 1,2
MV	=	Motor Arrastre	Advance Motor	Moteur d'entraînement
PA	=	Presostato Aclarado	Rinsed tank Pressure Switch	Pressostat de rinçage
PPL	=	Presostato Prelavado	Prewash tank Pressure Switch	Pressostat de prélavage cuve
PT1	=	Presostato Tanque 1	Washed tank 1 Pressure Switch	Pressostat de lavage cuve 1
PT2	=	Presostato Tanque 2	Washed tank 2 Pressure Switch	Pressostat de lavage cuve 2
R,N	=	Puntos conexión 230V	230V connection points	Points de connexion 230V
RC11,12,13	=	Resistencia Calentamiento Calderin	Boiler Element Heating	Resistance Chauffage Chaudière
RS1, 2	=	Resistencia Calentamiento Secado 1, 2	Drying Element Heating	Resistance Chauffage séchage
RTA	=	Resistencia Calentamiento Aclarado	Rinse tank Element Heating	Resistance Chauffage rinçage
RT11,12	=	Resistencia Calentamiento Tanque 1	Washed Tank 1 Element Heating	Resistance Chauffage lavage cuve 1
RT2	=	Resistencia Calentamiento Tanque 2	Washed Tank 2 Element Heating	Resistance Chauffage lavage cuve 2
SF	=	Interruptor Fin recorrido	Safety end Switch	Interrupteur fin de coourse
TA	=	Termostato Aclarado	Rinse Thermostat	Thermostat de rinçage
TC11	=	Termostato Calderin Temperatura Max.	Boiler thermostat Max. temperature	Thermostat Température max. chaudière
TC12	=	Termostato Calderin Temperatura min.	Boiler thermostat min. temperature	Thermostat Température min. chaudière
TREC	=	Termostato Recuperador	Recovery Thermostat	Thermostat récupérateur
TRF	=	Transformador	Transformer	Transformateur
TSA	=	Termostato Seguridad Aclarado	Rinse Hi-limit Thermostat	Thermostat Limiteur rinçage
TS1,2	=	Termostato Secado 1, 2	Drying 1,2 Thermostat	Thermostat séchage 1, 2
TSC1	=	Termostato Seguridad Calderin 1	Boiler 1 Hi-limit Thermostat	Thermostat Limiteur Chaudière
TST1,2	=	Termostato Seguridad Tanque 1,2	Washed 1,2 Hi-limit Thermostat	Thermostat Limiteur lavage 1, 2
TT1,2	=	Termostato Tanque 1, 2	Washed 1,2 Thermostat	Thermostat lavage 1, 2
VA	=	Electrovalvula Llenado y Aclarado	Filling and Rinse Solenoid Valve	Electrovanne Remplissage et rinçage
VEV	=	Electrovalvula Extractor de Vahos	Steam extractor Solenoid Valve	Electrovanne extracteur vapeur
VF	=	Variador de Frecuencia	Variable frequency drive	Variateur de fréquence
VL1,2	=	Electrovalvula Llenado Tanque 1, 2	Filling Tank 1, 2 Solenoid Valve	Electrovanne de remplissage 1, 2
VG	=	Electrovalvula General Recuperador	Recovery Solenoid Valve main	Electrovanne général Recuperateur
VREC	=	Electrovalvula Recuperador	Recovery Solenoid Valve	Electrovanne Recuperateur
ZA	=	Alarma Enganchon	Buzzer alarm stuck	Alarme buzzer blocage
	=			
COLOR	=	COLORES	COLOUR	COULEURS
BLK, bk, n	=	Negro	Black	Noir
BLU, bl, a	=	Azul	Blue	Bleu
BRN, bn, m	=	Marrón	Brown	Marron
GRN, gn, ve	=	Verde	Green	Vert
GRY, gy, g	=	Gris	Grey	Gris
ORG, or, na	=	Naranja	Orange	Orange
PNK, pk, rs	=	Rosa	Pink	Rose
PRP, pr, vi	=	Violeta	Purple	Violet
RED, rd, r	=	Rojo	Red	Rouge
WHT, wh, b	=	Blanco	White	Blanc
YEL, yw, am	=	Amarillo	Yellow	Jaune
YEL/GRN, am/ve	=	Amarillo/verde	Yellow / green	Jaune / vert
			L 37	12168021