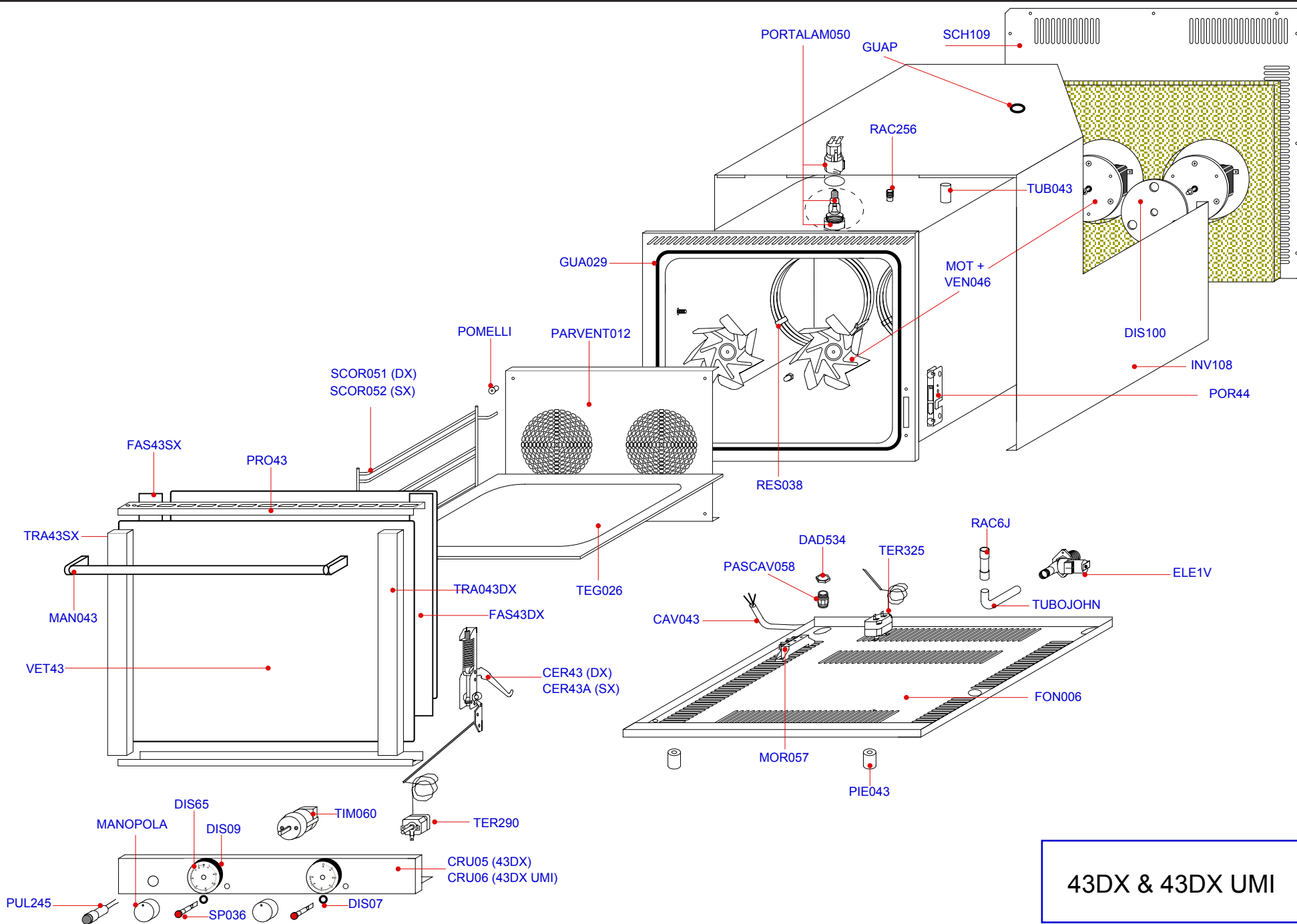


# SPARE PARTS PRICE LIST 2006

**43 DX**  
**43 DX UMI**



The "Seal of Control" applied on Garbin Ovens  
is the proof of the test effected and guarantees the quality of our products



43DX & 43DX UMI

◆ Mod. 43 DX ◆ 43 DX UMI ◆

Cod.	Descrizione articoli ◆ Description of items ◆ Description articles ◆ Beschreibung Artikel ◆ Descripción artículos
CAV043	CAVO DI ALIMENTAZIONE ◆ <b>SUPPLY CABLE</b> ◆ CABLE D'ALIMENTATION ◆ <b>SPEISEKABEL</b> ◆ CABLE DE ALIMENTACIÓN
CER43	CERNIERA DESTRA ◆ <b>RIGHT-HAND HINGE</b> ◆ CHARNIÈRE DROITE ◆ <b>RECHTES SCHARNIER</b> ◆ BISAGRA DERECHA
CER43A	CERNIERA SINISTRA ◆ <b>LEFT-HAND HINGE</b> ◆ CHARNIÈRE GAUCHE ◆ <b>LINKES SCHARNIER</b> ◆ BISAGRA IZQUIERDA
CRU05	CRUSCOTTO (43 DX) ◆ <b>INSTRUMENT PANEL</b> (43D X) ◆ BANDEAU DE COMMANDES (43 DX) ◆ <b>BEDIENBLENDE</b> (43 DX) ◆ PANEL DE MANDOS (43 DX)
CRU06	CRUSCOTTO (43 DX UMI) ◆ <b>INSTRUMENT PANEL</b> (43 DX UMI) ◆ BANDEAU DE COMMANDES (43 DX UMI) ◆ <b>BEDIENBLENDE</b> (43 DX UMI) ◆ PANEL DE MANDOS (43 DX UMI)
DAD534	DADO NYLON PG13,5 ◆ <b>NUT NYLON PG13,5</b> ◆ ECROU NYLON PG13,5 ◆ <b>MUTTER NYLON PG13,5</b> ◆ TUERCA NYLON PG13,5
DIS07	GUARNIZIONE NYLON D 18 ◆ <b>NYLON GASKET D 18</b> ◆ JOINT NYLON D 18 ◆ <b>NYLONDICHTUNG D 18</b> ◆ GUARNICIÓN NAILON D18
DIS09	GUARNIZIONE NYLON D 65 ◆ <b>NYLON GASKET D 65</b> ◆ JOINT NYLON D 65 ◆ <b>NYLONDICHTUNG D 65</b> ◆ GUARNICIÓN NAILON D 65
DIS65	DISCHETTO SERIGRAFATO D 65 ◆ <b>SILK SCREEN PRINTED DISC D 65</b> ◆ DISQUETTE SÉRIGRAPHIÉE D 65 ◆ <b>SERIGRAPHIERTE SCHEIBE D 65</b> ◆ DISCO SERIGRAFADO D 65
DIS100	ISOLATORE TERMICO ◆ <b>THERMIC INSULATOR</b> ◆ ISOLATEUR THERMIQUE ◆ <b>WÄRME ISOLATOR</b> ◆ AISLADOR TÉRMICO
ELE1V	ELETTROVALVOLA 1 VIA ◆ <b>SOLENOID VALVE – 1-WAY</b> ◆ ELECTROVANNE 1 VOIE ◆ <b>MAGNETVENTIL – 1-WEG</b> ◆ ELECTROVÁLVULA 1 VÍA
FAS43DX	FASCIA PORTA DESTRA ◆ <b>DOOR PLATE STRIP - RIGHT</b> ◆ BANDE PORTE - DROITE ◆ <b>TÜR-BLECHSTREIFEN RECHTS</b> ◆ FAJA PUERTA DERECHA
FAS43SX	FASCIA PORTA SINISTRA ◆ <b>DOOR PLATE STRIP - LEFT</b> ◆ BANDE PORTE - GAUCHE ◆ <b>TÜR-BLECHSTREIFEN LINKS</b> ◆ FAJA PUERTA IZQUIERDA
FON006	FONDO LAMIERA ◆ <b>SHEET BOTTOM</b> ◆ FOND EN TÔLE ◆ <b>BODEN BLECH LÜFTERRADSCHUTZGITTER</b> ◆ BASE PLANCHA
GUA029	GUARNIZIONE PORTA ◆ <b>DOOR RUBBER GASKET</b> ◆ JOINT PORTE INTERNE ◆ <b>DICHTUNG INNENTÜR</b> ◆ BURLETE PUERTA
GUAP	GUARNIZIONE CAMINO ◆ <b>CHIMNEY GASKET</b> ◆ JOINT CHEMINÉE ◆ <b>SCHORNSTEINDICHTUNG</b> ◆ GUARNICIÓN CHIMENEA
INV108	INVOLUCRO ◆ <b>CASING</b> ◆ COUVERTURE ◆ <b>OFENMANTEL</b> ◆ CUBIERTA
MAN043	MANIGLIA ◆ <b>HANDLE</b> ◆ MANETTE ◆ <b>GRIFF</b> ◆ MANECILLA
MANOPOLA	MANOPOLA ◆ <b>KNOB</b> ◆ MANETTE ◆ <b>BEDIENKNOPF</b> ◆ EMPUÑADURA
MOR057	MORSETTIERA ALIMENTAZIONE ◆ <b>SUPPLY TERMINAL BOARD</b> ◆ BORNE ALIMENTATION ◆ <b>VERSORGUNGSKLEMMENLEISTE</b> ◆ BORNERA DE ALIMENTACIÓN
MOT+VEN046	MOTORE/VENTOLA ◆ <b>MOTOR/FAN</b> ◆ MOTEUR/VENTILATEUR ◆ <b>MOTOR/LÜFTERRAD</b> ◆ MOTOR/VENTILADOR
PARVENT012	PARAVENTOLA ◆ <b>FAN COVER</b> ◆ PROTECTION DU VENTILATEUR ◆ <b>WINDSCHUTZ</b> ◆ PROTECCION VENTILADOR
PASCAV058	PASSACAVO ◆ <b>CABLE GUIDE</b> ◆ PASSE CABLE ◆ <b>KABEL FÜHRUNG</b> ◆ AISCADOR PASAPANEL
PIE043	PIEDINO ◆ <b>FOOT</b> ◆ PIED ◆ <b>FUSS</b> ◆ PIE
POMELLI	POMELLO ◆ <b>KNOB</b> ◆ POMMEAU ◆ <b>KNAUF</b> ◆ TIRADOR
POR44	PORTARULLINO PER CERNIERA ◆ <b>PIVOT HOLDER FOR HINGE</b> ◆ PORTE AIGUILLE DE ROULEMENT POUR CHARNIÈRE ◆ <b>ROLLENTRÄGER FÜR SCHARNIER</b> ◆ PORTA PERNO PARA BISAGRA
PORTLAM050	PORTALAMPADA ◆ <b>LAMPHOLDER</b> ◆ PORTE-LAMPE ◆ <b>LAMPENFASSUNG</b> ◆ PORTALÁMPARAS
PRO43	PROFILO PORTA ◆ <b>DOOR PROFILE</b> ◆ PROFIL PORTE ◆ <b>TÜRRAHMEN</b> ◆ PERFIL PUERTA
PUL245	PULSANTE LUMINOSO ◆ <b>BRIGHT BUTTON</b> ◆ BOUTON-POUSOIR LUMINEUX ◆ <b>LEUCHTTASTE</b> ◆ PULSADOR LUMINOSO
RAC256	RACCORDO INTERMEDIO ◆ <b>INTERMEDIATE CONNECTION</b> ◆ RACCORD INTERMÉDIAIRE ◆ <b>INTERMEDIÄRES VEBINDUNGSGLIED</b> ◆ CONEXIÓN INTERMEDIA
RAC6J	RIDUZIONE INTERMEDIA ◆ <b>INTERMEDIATE REDUCTION</b> ◆ REDUCTION INTERMÉDIAIRE ◆ <b>INTERMEDIÄRES UNTERSETZUNGSGETRIEBE</b> ◆ REDUCCIÓN INTERMEDIA
RES038	RESISTENZA CIRCOLARE 1300W V230 ◆ <b>RESISTOR 1300W V230</b> ◆ RÉSISTANCE 1300W V230 ◆ <b>WIDERSTAND 1300W V230</b> ◆ RESISTENCIA 1300W V230
SCH109	SCHIENA ◆ <b>REAR PANEL</b> ◆ DOS ◆ <b>RÜCKENTEIL</b> ◆ TRASERA
SCOR051	SCORRIGRIGLIA DESTRA ◆ <b>RIGHT PAN SUPPORT</b> ◆ GRILLE LATÉRALE DROITE ◆ <b>RECHTES SEITLICHES GITTER</b> ◆ REJILLA LATERAL DERECHA
SCOR052	SCORRIGRIGLIA SINISTRA ◆ <b>LEFT PAN SUPPORT</b> ◆ GRILLE LATÉRALE GAUCHE ◆ <b>LINKES SEITLICHES GITTER</b> ◆ REJILLA LATERAL IZQUIERDA
SP036	SEGNALATORE ROSSO ◆ <b>RED INDICATOR</b> ◆ SIGNALÉUR ROUGE ◆ <b>ROTE LEUCHTANZEIGE</b> ◆ INDICADOR ROJO
TEG026	TEGLIA ◆ <b>TRAY</b> ◆ BAC ◆ <b>BACKFORM</b> ◆ BANDEJA
TER290	TERMOSTATO 0-290 °C ◆ <b>THERMOSTAT 0-290 °C</b> ◆ THERMOSTAT 0-290 °C ◆ <b>THERMOSTAT 0-290 °C</b> ◆ TERMOSTATO 0-290 °C
TER325	TERMOSTATO SICUREZZA ◆ <b>SAFETY THERMOSTAT</b> ◆ THERMOSTAT DE SÉCURITÉ ◆ <b>SICHERHEITSTHERMOSTAT</b> ◆ TERMOSTATO DE SEGURIDAD
TIM060	TEMPORIZZATORE 60' ◆ <b>TIMER 60'</b> ◆ TEMPORISATEUR 60' ◆ <b>ZEITSCHALTUHR 60'</b> ◆ TEMPORIZADOR 60'
TRA043DX	TRAVERSO PORTA DX ◆ <b>RIGHT DOOR GIRDER</b> ◆ ENTRETOISE DROITE PORTE ◆ <b>RECHTER RIEGEL</b> ◆ TRAVESERO DERECHO PUERTA
TRA43SX	TRAVERSO PORTA SX ◆ <b>LEFT DOOR GIRDER</b> ◆ ENTRETOISE GAUCHE PORTE ◆ <b>LINKER RIEGEL ZUR TÜR</b> ◆ TRAVESERO IZQUIERDO PUERTA
TUB043	SFIATO VAPORI ◆ <b>FUMES VENT</b> ◆ FISSURE DES VAPEURS ◆ <b>DUNST LUFTLOCH</b> ◆ CANERIA POR HUMOS
TUBOJOHN	TUBO TRASPARENTE ◆ <b>TRANSPARENT TUBE</b> ◆ TUBE TRANSPARENT ◆ <b>DURCHSICHTIGES ROHR</b> ◆ TUBO TRASPARENTE
VET43	CRISTALLO INTERNO/ESTERNO ◆ <b>INTERNAL/EXTERNAL GLASS</b> ◆ VITRE INTERNE/EXTERNE ◆ <b>INNENSCHIEBE/AUßENSCHIEBE</b> ◆ CRISTAL INTERNO/EXTERNO