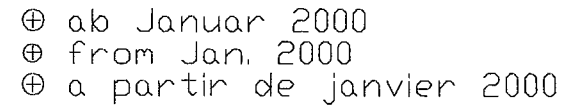


elomma

Ersatzteilliste
Backmaster EB EBC

Pièce No. 35 EB100 a partir de e'appareil No. 443



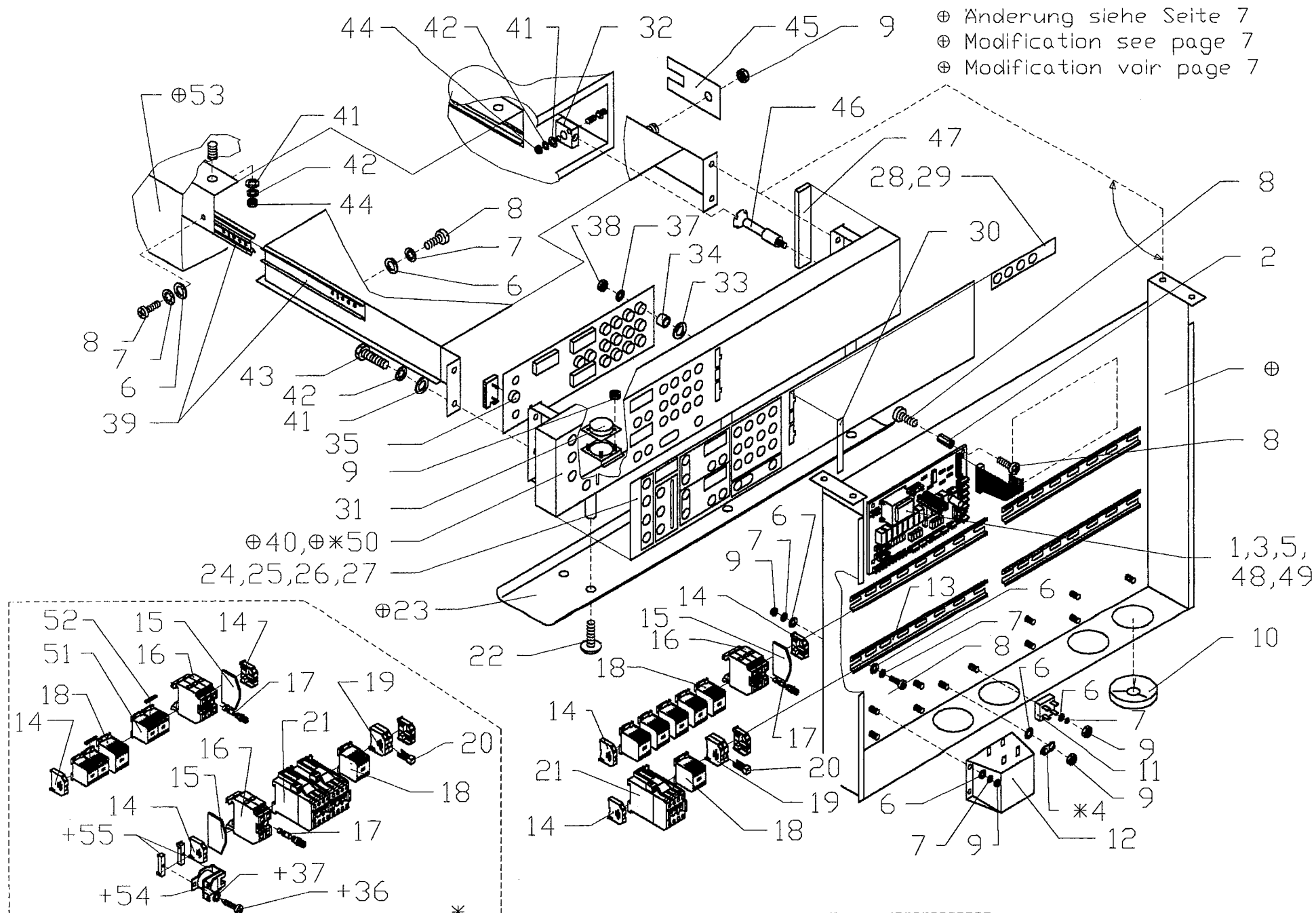
- 1 -

Backmaster EB EBC

Pos.	Artikel Nr.	Teile/Benennung	EB 40	EB 60	EB 100	EBC 80	EBC 100	EBC 120	electron	digital
1	477106	Seitendeckel EB 40	●			●	●		●	●
2	477108	Seitendeckel EB 60		●			●	●	●	●
3	477110	Seitendeckel EB 100			●				●	●
4	503051	Linsensenkbl. DIN 7983 C 3,9x19 V2A	●	●	●	●	●	●	●	●
5	473105	Rahmen kpl. EB	●	●	●	●	●	●	●	●
6	475113	Gehäusedeckel EB	●	●	●	●	●	●	●	●
7	508013	Scheibe DIN 125 A 6,4 V2A	●	●	●	●	●	●	●	●
8	500026	6kt-Schraube ISO 4017 M6x16 V2A	●	●	●	●	●	●	●	●
9	470097	Einhängegestell rechts EB 40	●			●	●		●	●
10	470099	Einhängegestell rechts EB 60		●			●	●	●	●
11	470101	Einhängegestell rechts EB 100			●				●	●
12	470098	Einhängegestell links EB 40	●			●	●		●	●
13	470100	Einhängegestell links EB 60		●			●	●	●	●
14	470102	Einhängegestell links EB 100			●				●	●
15	471065	Luftleitblech EB 40	●			●	●		●	●
16	471064	Luftleitblech EB 60		●			●	●	●	●
17	471063	Luftleitblech EB 100			●				●	●
18	407015	Einschlagstellfuß best.: Gewindegle	●	●	●	●	●	●	●	●
19	302004	Anschlusskabel 5 x 2,5 konfektion	●	●	●	●	●	●	●	●
20	306015	Gummitülle DG 9 Weich-PVC	●	●	●	●	●	●	●	●
21	407058	Abdeckung EB	●	●	●				●	●
22	477112	Rückwand EB 40	●			●	●		●	●
23	477113	Rückwand EB 60		●			●	●	●	●
24	477114	Rückwand EB 100			●				●	●
25	477115	Rückwand Elektrogehäuse EB	●	●	●	●	●	●	●	●
26	483149	Verbindungsblech EB	●	●	●	●	●	●	●	●
27	500091	Linsenschraube DIN 7985 M4x8 V2A	●	●	●	●	●	●	●	●
28	510013	Zahnscheibe DIN 6797 J4,3 V2A	●	●	●	●	●	●	●	●
29	508012	Scheibe DIN 125 A 4,3 V2A	●	●	●	●	●	●	●	●
30	418043	Austrittsfiltergehäuse f. Axiallüfter	●	●	●	●	●	●	●	●
31	503016	Linseblechs. DIN 7981 C 3,9x9,5 V2	●	●	●	●	●	●	●	●
32	392016	Axiallüfter 10 W Pabst 80x8	●	●	●	●	●	●	●	●
33	500038	6kt-Schraube ISO 4017 M8x45 V2A	●	●	●	●	●	●	●	●
34	348016	Lautsprecher EB 40/60/100	●	●	●	●	●	●	●	●
35	407085	Blindstopfen Abluft EB 30 XL	●	●	●	●	●	●	●	●
36	475109	Elektrogehäuse EB	●	●	●				●	●
37	505030	6kt-Mutter ISO 4032 M3 V4A D	●	●	●	●	●	●	●	●
38	510020	Zahnscheibe DIN 6797 J3,2 V2A	●	●	●	●	●	●	●	●

[illegible]

⊕ Änderung siehe Seite 7
 ⊕ Modification see page 7
 ⊕ Modification voir page 7



+ EB40 ab Geräte Nr. 510
 + EB40 from unit No. 510
 + EB40 a partir de e'appareil No. 510

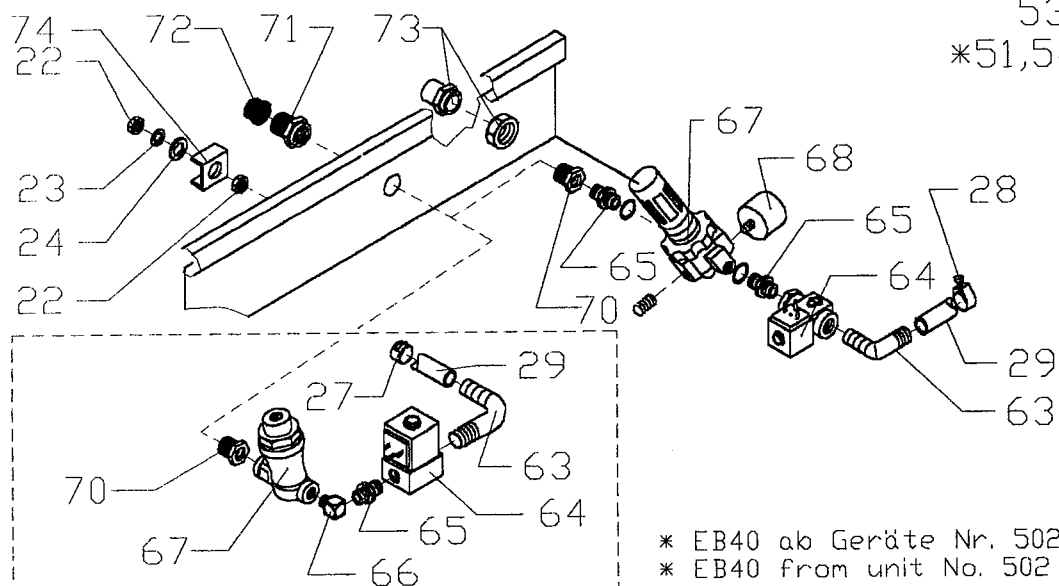
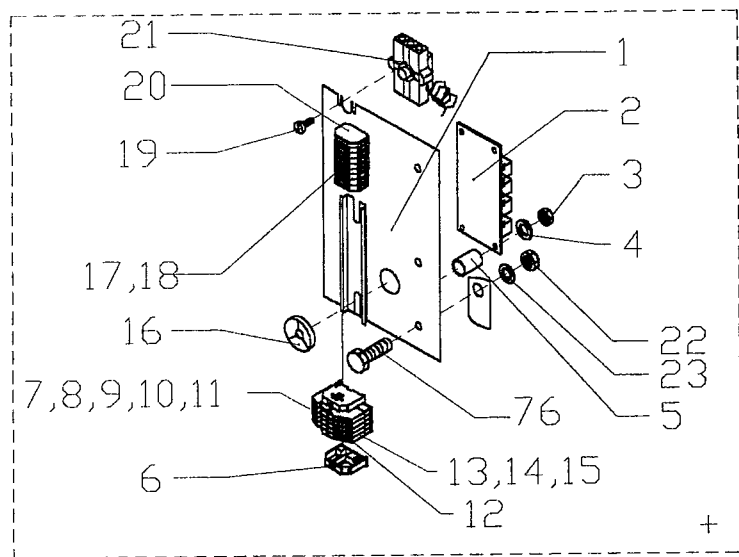
+ EB60 ab Geräte Nr. 628
 + EB60 from unit No. 628
 + EB60 a partir de e'appareil No. 628

*ab Januar 1999
 *from Jan. 1999
 *a partir de janvier 1999

Backmaster EB EBC

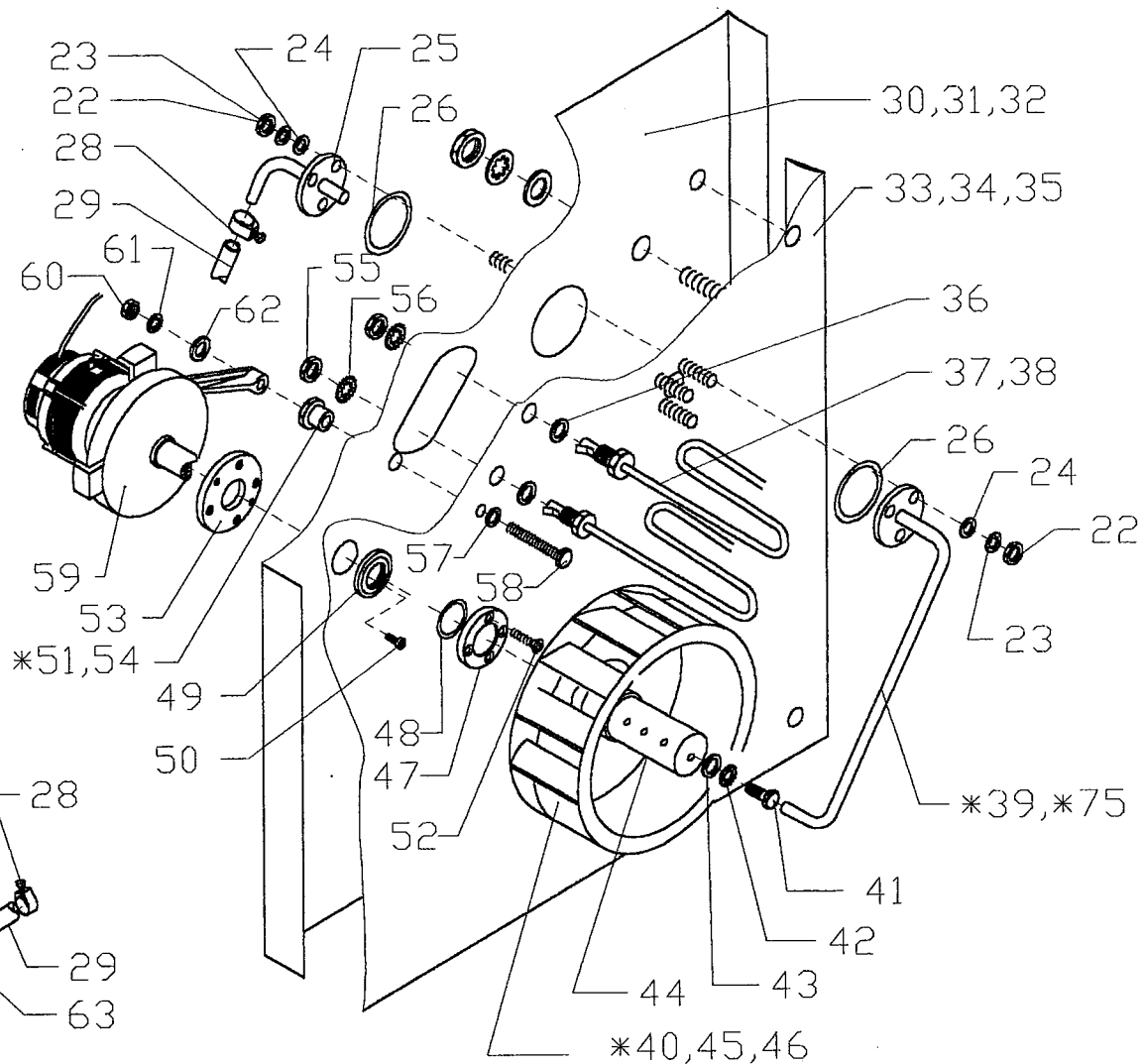
Pos.	Artikel Nr.	Teile/Benennung	EB 40	EB 60	EB 100	EBC 80	EBC 100	EBC 120	electron	digital
1	375006	Feinsicherung 1 A träge 5 x 20 mm	●	●	●	●	●	●	●	●
2	414049	Sechskantabstandsbolzen M4 I-I, L-12	●	●	●	●	●	●	●	●
3	375007	Feinsicherung 2 A träge 5 x 20	●	●	●	●	●	●	●	●
4	362136	MS-Erdungszeichen	●	●	●	●	●	●	●	●
5	344025	Netzplatine EB 40/60/100	●	●	●	●	●	●	●	●
6	508012	Scheibe DIN 125 A 4,3 V2A	●	●	●	●	●	●	●	●
7	510013	Zahnscheibe DIN 6797 J4,3 V2A	●	●	●	●	●	●	●	●
8	500091	Linsenschraube DIN 7985 M4x8 V2A	●	●	●	●	●	●	●	●
9	505031	6kt-Mutter ISO 4032 M4 V4A D	●	●	●	●	●	●	●	●
10	306025	Durchführungstülle PG 36	●	●	●				●	●
11	308056	Brückengleichrichter Silizium m	●	●	●	●	●	●	●	●
12	310024	Transformator EB / ED 20	●	●	●	●	●	●	●	●
13	373002	Klemmschiene Meterware 35 DIN	●	●	●	●	●	●	●	●
14	371010	Endklammer für Schiene 35 DIN	●	●	●	●	●	●	●	●
15	371009	Abschlußplatte für Sicherungs	●	●	●	●	●	●	●	●
16	373009	Sicherungsklemme 35 DIN	●	●	●	●	●	●	●	●
17	375002	Feinsicherung 10 A träge 5 x 20	●	●	●	●	●	●	●	●
18	324001	Schütz A9/30-10 230 V 50-6	●	●	●	●	●	●	●	●
19	371021	Universalklemme blau 4qmm	●	●	●	●	●	●	●	●
20	371014	Querbrücker 4qmm (281)	●	●	●	●	●	●	●	●
21	324002	Schütz 230 V 50 H	●	●	●	●	●	●	●	●
22	500124	Becherschraube M4x8 V2A mit Innense	●	●	●	●	●	●	●	●
23	479052	Wärmestrahleblech EB nicht mehr	●	●	●	●	●	●	●	●
24	350126	Klebeblende EB 40/60/100 Backmaste	●	●	●				●	
25	350142	Klebeblende EB 40/60/100 Backmaste	●	●	●					●
26	350125	Klebeblende Doppelstation EBC elect				●	●	●	●	
27	350143	Klebeblende Doppelstation EBC Digita				●	●	●		●
28	360024	Bogen Backsymbole selbstklebe	●	●	●	●	●	●	●	
29	360027	Symbolleiste Backsymbole EB Ersatz	●	●	●	●	●	●	●	
30	382015	Einschubabdeckung EB Pantone 21	●	●	●	●	●	●	●	●
31	348016	Lautsprecher EB 40/60/100	●	●	●	●	●	●	●	●
32	382014	Verbinderaufnahme	●	●	●	●	●	●	●	●
33	508019	Unterlegscheibe Nylon D7 d3 h0,5	●	●	●	●	●	●	●	●
34	412081	Distanzhülse Kunststoff D-6,5; d-3,	●	●	●	●	●	●	●	●
35	340027	Steuerungstastatur EB 40/60/1	●	●	●	●	●	●	●	
36	503010	Linsenblechs. DIN 7981 C 2,9x9,5 V2	●	●	●	●	●	●	●	●
37	510020	Zahnscheibe DIN 6797 J3,2 V2A	●	●	●	●	●	●	●	●
38	505030	6kt-Mutter ISO 4032 M3 V4A D	●	●	●	●	●	●	●	●

[illegible]



ab Januar 1999
From January 1999
à partir de janvier 1999

+ Änderung siehe Seite 8
+ Modification see page 8
+ Modification voir page 8



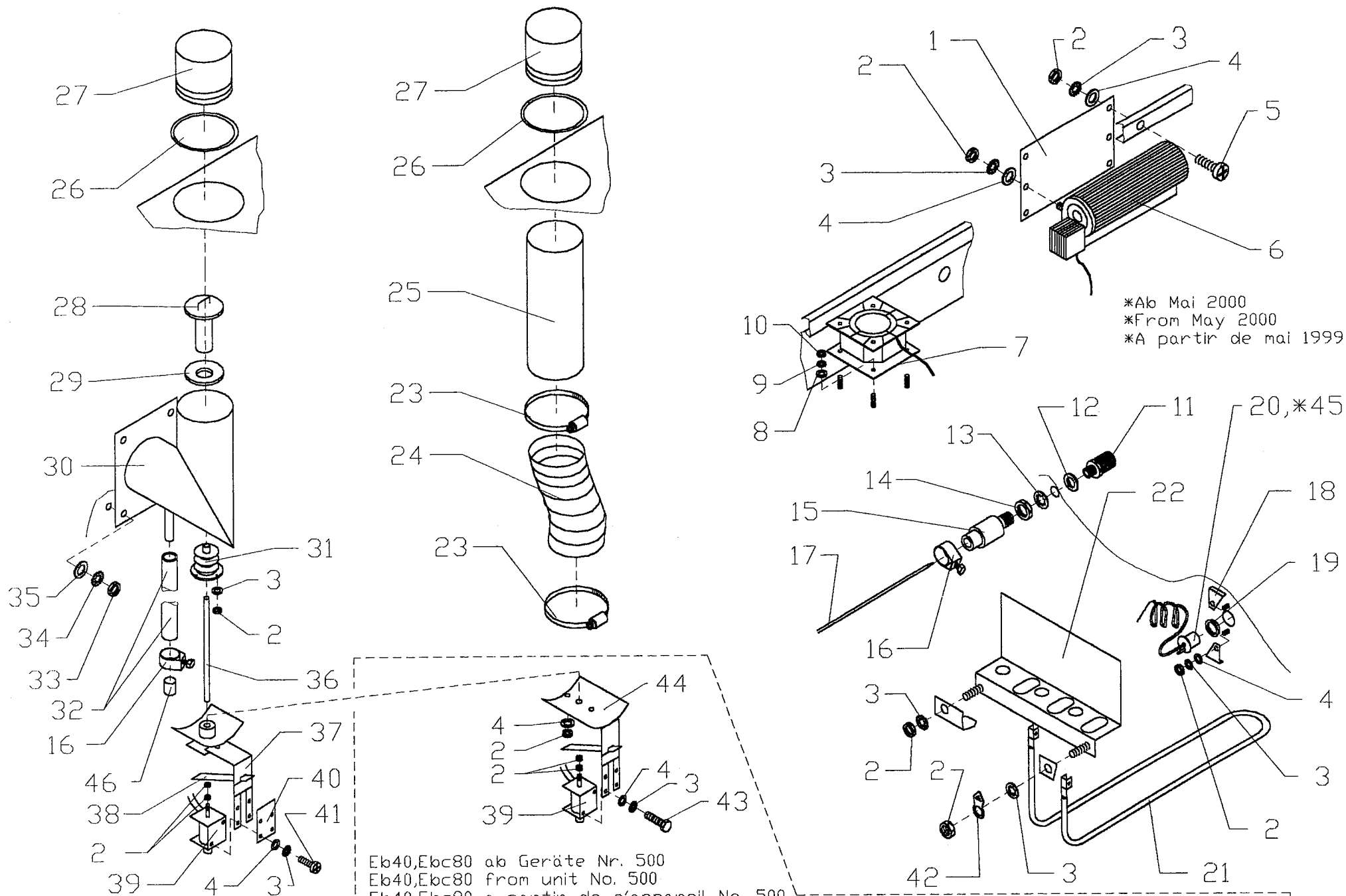
* EB40 ab Geräte Nr. 502
* EB40 from unit No. 502
* EB40 a partir de e'appareil No. 502
* EB60 ab Geräte Nr. 757
* EB60 from unit No. 757
* EB60 a partir de e'appareil No. 757
* EB100 ab Geräte Nr. 479
* EB100 from unit No. 479
* EB100 a partir de e'appareil No. 479

* EBC80 ab Geräte Nr. 401
* EBC80 from unit No. 401
* EBC80 a partir de e'appareil No. 401
* EBC100 ab Geräte Nr. 407
* EBC100 from unit No. 407
* EBC100 a partir de e'appareil No. 407
* EBC120 ab Geräte Nr. 419
* EBC120 from unit No. 419
* EBC120 a partir de e'appareil No. 419

Backmaster EB EBC

Pos.	Artikel Nr.	Teile/Benennung	EB 40	EB 60	EB 100	EBC 80	EBC 100	EBC 120	electron	digital
1	482036	Elektromontageblech EB	●	●	●	●	●	●	●	●
2	308018	Entstörplatine 5-3 bis 20-	●	●	●	●	●	●	●	●
3	505030	6kt-Mutter ISO 4032 M3 V4A D	●	●	●	●	●	●	●	●
4	508005	Scheibe DIN 125 A 3,2 V2A	●	●	●	●	●	●	●	●
5	412081	Distanzhülse Kunststoff D-6,5; d-3,	●	●	●	●	●	●	●	●
6	371010	Endklammer für Schiene 35 DIN	●	●	●	●	●	●	●	●
7	362004	Bezeichnungstreifen "Erdung"	●	●	●	●	●	●	●	●
8	362005	Bezeichnungstreifen "N"	●	●	●	●	●	●	●	●
9	362006	Bezeichnungstreifen "L1"	●	●	●	●	●	●	●	●
10	362007	Bezeichnungstreifen "L2"	●	●	●	●	●	●	●	●
11	362008	Bezeichnungstreifen "L3"	●	●	●	●	●	●	●	●
12	371057	Abschlußplatte für 4qmm 3-Leiterklei	●	●	●	●	●	●	●	●
13	371055	Durchgangsklemme 3-Leiter blau	●	●	●	●	●	●	●	●
14	371054	Durchgangsklemme 3-Leiter grau	●	●	●	●	●	●	●	●
15	371056	Schutzleiterklemme 3-Leiter	●	●	●	●	●	●	●	●
16	306019	Durchführungstülle PG 16	●	●	●	●	●	●	●	●
17	371041	Klemme 2-Leiter grau mit Flansch	●	●	●	●	●	●	●	●
18	371040	Klemme 2-Leiter grau mit Rastfuß	●	●	●	●	●	●	●	●
19	500091	Linsenschraube DIN 7985 M4x8 V2A	●	●	●	●	●	●	●	●
20	371039	Abschlußplatte m. Rastfuß	●	●	●	●	●	●	●	●
21	336017	Sicherheitstemp. Begrenz. 305 C - 20	●	●	●	●	●	●	●	●
22	505032	6kt-Mutter ISO 4032 M6 V4A D	●	●	●	●	●	●	●	●
23	510015	Zahnscheibe DIN 6797 J6,4 V2A	●	●	●	●	●	●	●	●
24	508013	Scheibe DIN 125 A 6,4 V2A	●	●	●	●	●	●	●	●
25	442165	Wasserzulaufrohr EB Elektroraur	●	●	●	●	●	●	●	●
26	425126	O-Ring 21,8x3,53 Viton	●	●	●	●	●	●	●	●
27	422065	Spannschelle Edelstahl wiederverw	●	●	●	●	●	●	●	●
28	422017	Schlauchschele D 14	●	●	●	●	●	●	●	●
29	444055	Silikonschlauch 6x3 transparent	●	●	●	●	●	●	●	●
30	478068	Motorisulationsblech EB 40	●			●	●		●	●
31	478067	Motorisulationsblech EB 60		●			●	●	●	●
32	478066	Motorisulationsblech EB 100			●				●	●
33	478075	Motorversteifungsblech EB 40	●			●	●		●	●
34	478076	Motorversteifungsblech EB 60		●			●	●	●	●
35	478077	Motorversteifungsblech EB 100			●				●	●
36	427021	Dichtung Cu Heizkörper	●	●	●	●	●	●	●	●
37	318082	Heizkörper 2.30 KW 230 V Tropendich	●	●	●	●	●	●	●	●
38	318045	Heizkörper 1,45 KW 230 V f. ELH u. M	●	●			●	●	●	●

Pos.	Artikel Nr.	Teile/Benennung	EB 40	EB 60	EB 100	EBC 80	EBC 100	EBC 120	electron	digital
39	442164	Wasserzulaufrohr Garraum EB 60		●	●		●	●	●	●
40	392028	Lüfterrad EB verstärkte		●	●		●	●	●	●
41	500048	6kt-Schraube ISO 4017 M10x16 V2	●	●	●	●	●	●	●	●
42	510017	Zahnscheibe DIN 6797 J 10,5 V2A	●	●	●	●	●	●	●	●
43	508014	Scheibe DIN 125 A 10,5 V2A	●	●	●	●	●	●	●	●
44	412075	Verteilerhülse Dampferze	●	●	●	●	●	●	●	●
45	392022	Gebläserad EB 40 280 x 80	●			●	●		●	●
46	392021	Gebläserad EB 60/100 350 x 80		●	●		●	●	●	●
47	412089	Wellendichtflansch E MD/MMD/E	●	●	●	●	●	●	●	●
48	425066	O-Ring 34,59x2,62 Viton	●	●	●	●	●	●	●	●
49	425063	Wellendichtring 16x41x3	●	●	●	●	●	●	●	●
50	500095	Linsenschraube DIN 7985 M3x10 V2A	●	●	●	●	●	●	●	●
51	412153	Motorabstandsbuchse für Lüfterrad E		●	●		●	●	●	●
52	500147	Senkschraube DIN 963 M4x16 V2A	●	●	●	●	●	●	●	●
53	412037	Wellendichtflansch A MD/MMD/E	●	●	●	●	●	●	●	●
54	412139	Motorabstandsbuchse EB	●	●	●	●	●	●	●	●
55	505079	Mutter Heizkörper M 14 x 1,5	●	●	●	●	●	●	●	●
56	510019	Zahnscheibe DIN 6797 J 14,5 V2A	●	●	●	●	●	●	●	●
57	427038	Kupferdichtung	●	●	●	●	●	●	●	●
58	500009	6kt-Schraube ISO 4014 M8x50 V2A	●	●	●	●	●	●	●	●
59	390044	Motor EB 40-60-100 Drehstrom	●	●	●	●	●	●	●	●
60	505033	6kt-Mutter ISO 4032 M8 V4A D	●	●	●	●	●	●	●	●
61	510016	Zahnscheibe DIN 6797 J8,4 V2A	●	●	●	●	●	●	●	●
62	508017	Scheibe DIN 125 A 8,4 V2A	●	●	●	●	●	●	●	●
63	440007	Winkeleinschraubtülle	●	●	●	●	●	●	●	●
64	436040	Magnetventil/Modell 2000 2/2 Wege-c	●	●	●	●	●	●	●	●
65	440092	Doppelnippel G 1/8	●	●	●	●	●	●	●	●
66	440083	Winkel-Einschraubstutzen	●	●	●	●	●	●	●	●
67	436009	Druckminderer 1/8	●	●	●	●	●	●	●	●
68	348009	Manometer 0-4,0 bar	●	●	●	●	●	●	●	●
70	440046	Reduziernippel G 3/8 - G 1	●	●	●	●	●	●	●	●
71	440039	Reduzierstück A 3/4" I 3/8	●	●	●	●	●	●	●	●
72	418017	Schmutzsieb	●	●	●	●	●	●	●	●
73	306030	Verschraubung PG 21 mit Zugentlast	●	●	●	●	●	●	●	●
74	483035	Potentialausgleichsklemme	●	●	●	●	●	●	●	●
75	442169	Wasserzulaufrohr Garraum EB 40	●			●	●	●	●	●
76	500043	6kt-Schraube ISO 4017 M6x10 V2A	●	●	●	●	●	●	●	●



*Ab Mai 2000
 *From May 2000
 *A partir de mai 1999

Eb40,Ebc80 ab Geräte Nr. 500
 Eb40,Ebc80 from unit No. 500
 Eb40,Ebc80 a partir de e'appareil No. 500
 Eb60,Ebc120 ab Geräte Nr. 600
 Eb60,Ebc120 from unit No. 600
 Eb60,Ebc120 a partir de e'appareil No. 600

Eb100,Ebc100 ab Geräte Nr. 400
 Eb100,Ebc100 from unit No. 400
 Eb100,Ebc100 a partir de e'appareil No. 400

Backmaster EB EBC

Pos.	Artikel Nr.	Teile/Benennung	EB 40	EB 60	EB 100	EBC 80	EBC 100	EBC 120	electron	digital
1	483148	Halterung Querstrom	●	●	●	●	●	●	●	●
2	505031	6kt-Mutter ISO 4032 M4 V4A D	●	●	●	●	●	●	●	●
3	510013	Zahnscheibe DIN 6797 J4,3 V2A	●	●	●	●	●	●	●	●
4	508012	Scheibe DIN 125 A 4,3 V2A	●	●	●	●	●	●	●	●
5	500098	Linsenschraube DIN 7985 M4x10 V2A	●	●	●	●	●	●	●	●
6	390023	Querstromgebläse 180mm	●	●	●	●	●	●	●	●
7	392016	Axiallüfter 10 W Pabst 80x8				●	●	●	●	●
8	508002	Scheibe DIN 125 A 5,3 V2A				●	●	●	●	●
9	510014	Zahnscheibe DIN 6797 J5,3 V2A				●	●	●	●	●
10	505024	6kt-Mutter ISO 4032 M5 V4A D				●	●	●	●	●
11	418001	Schutzsieb für Thermo	●	●	●	●	●	●	●	●
12	427059	Dichtring CU vernickelt 13 x 19 x 1	●	●	●	●	●	●	●	●
13	510018	Zahnscheibe DIN 6797 J 12,5 V2A	●	●		●	●	●	●	●
14	505045	Mutter 1/4"	●	●	●	●	●	●	●	●
15	410013	Tefloneinsatz für NiCrNi	●	●	●	●	●	●	●	●
16	422017	Schlauchschelle D 14	●	●	●	●	●	●	●	●
17	316004	Thermoelement-Fühler Ni-Cr-Ni M	●	●	●	●	●	●	●	●
18	485032	Halter, STB-Fühler29x25x2 MMD 10-1	●	●	●	●	●	●	●	●
19	412073	Zentrierbuchse D21x15x3,5 MMD 10-1	●	●	●	●	●	●	●	●
20	336017	Sicherheitstemp. Begrenz. 305 C - 20	●	●	●	●	●	●	●	●
21	318094	Heizkörper 230 V - 600 W Tropendich	●	●	●	●	●	●	●	●
22	483129	Fangblech für Bodenheiz	●	●	●	●	●	●	●	●
23	422055	Schlauchschelle EB Flexschlau				●	●	●	●	●
24	444038	Flexschlauch EBC				●	●	●	●	●
25	442171	Verlängerungsrohr EBC				●	●	●	●	●
26	425140	O-Ring EB Verlängeru	●	●	●	●	●	●	●	●
27	442162	Verlängerungsrohr Abluft EB	●	●	●	●	●	●	●	●
28	483127	Deckel Abluft EB	●	●	●	●	●	●	●	●
29	425134	Silikonscheibe Abluft EB	●	●	●	●	●	●	●	●
30	442163	Abluftrohr EB	●	●	●	●	●	●	●	●
31	427060	Faltenbalg Werkstoff: Silikon fettl	●	●	●	●	●	●	●	●
32	444013	Siliconschlauch 9,5x2,5mm beschichte	●	●	●	●	●	●	●	●
33	505032	6kt-Mutter ISO 4032 M6 V4A D	●	●	●	●	●	●	●	●
34	510015	Zahnscheibe DIN 6797 J6,4 V2A	●	●	●	●	●	●	●	●
35	508013	Scheibe DIN 125 A 6,4 V2A	●	●	●	●	●	●	●	●
36	403045	Hubstange Abluft EB	●	●	●	●	●	●	●	●
37	483126	Trägerblech Abluft EB KD-Ersatz=	●	●	●	●	●	●	●	●
38	483141	Uebersetzungshebel Abluft EB 40/60/1	●	●	●	●	●	●	●	●

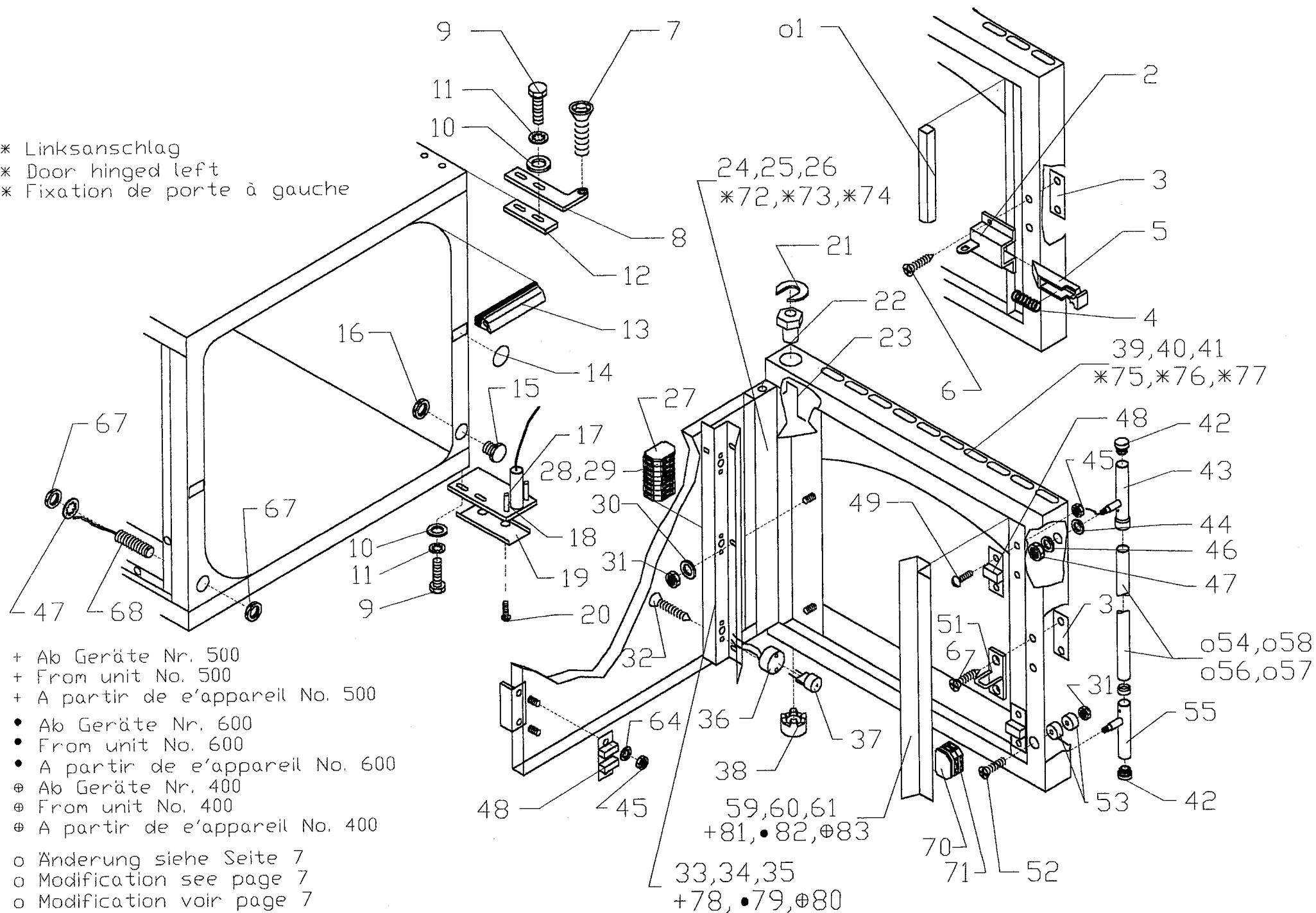
[illegible]

Backmaster EB EBC

Pos.	Artikel Nr.	Teile/Benennung	EB 40	EB 60	EB 100	EBC 80	EBC 100	EBC 120	electron	digital
1	500223	Fensterschraube ELG 3 5, 8	●	●	●	●	●	●	●	●
2	385100	Winkelhebel EB 40 Linksausfü	●			●	●		●	●
3	385101	Winkelhebel EB 60 Linksausfü		●			●	●	●	●
4	385107	Winkelhebel EB 100 Linksausfü			●				●	●
5	385096	Zugstange EB	●	●	●	●	●	●	●	●
6	505031	6kt-Mutter ISO 4032 M4 V4A D	●	●	●	●	●	●	●	●
7	416051	Zugfeder Winkelhebel EB	●	●	●	●	●	●	●	●
8	500119	Linsenschraube DIN 7985 M4x20 V2A	●	●	●	●	●	●	●	●
9	380064	Schließhaken Türverschluß EB	●	●	●	●	●	●	●	●
10	483140	Druckstange EB	●	●	●	●	●	●	●	●
11	483139	Schloßkasten EB	●	●	●	●	●	●	●	●
12	505032	6kt-Mutter ISO 4032 M6 V4A D	●	●	●	●	●	●	●	●
13	510015	Zahnscheibe DIN 6797 J6,4 V2A	●	●	●	●	●	●	●	●
14	410030	Kurbel Türverschluß EB	●	●	●	●	●	●	●	●
15	505030	6kt-Mutter ISO 4032 M3 V4A D	●	●	●	●	●	●	●	●
16	510020	Zahnscheibe DIN 6797 J3,2 V2A	●	●	●	●	●	●	●	●
17	320057	Rolle für Microschalter	●	●	●	●	●	●	●	●
18	320055	Microschalter	●	●	●	●	●	●	●	●
19	483147	Schaltblech EB Linksausfü	●	●	●	●	●	●	●	●
20	508013	Scheibe DIN 125 A 6,4 V2A	●	●	●	●	●	●	●	●
21	500043	6kt-Schraube ISO 4017 M6x10 V2A	●	●	●	●	●	●	●	●
22	390049	Motorhalterung EB Linksausfü	●	●	●	●	●	●	●	●
23	390032	Getriebemotor 24 V DC	●	●	●	●	●	●	●	●
24	483137	Schloßkasten EB Linksausfü	●	●	●	●	●	●	●	●
25	505108	Scheibenmutter M6 A 2	●	●	●	●	●	●	●	●
26	483138	Schaltblech EB	●	●	●	●	●	●	●	●
27	390045	Motorhalterung EB	●	●	●	●	●	●	●	●
28	505027	6kt-Mutter ISO 4032 M12 V4A	●	●	●	●	●	●	●	●
29	500069	Blindschraube M12x20 V2A	●	●	●	●	●	●	●	●
30	401041	Türlager unten EB Linksausfü	●	●	●	●	●	●	●	●
31	401047	Distanzplatte Türlager EB	●	●	●	●	●	●	●	●
32	407058	Abdeckung EB	●	●	●	●	●	●	●	●
33	510016	Zahnscheibe DIN 6797 J8,4 V2A	●	●	●	●	●	●	●	●
34	508017	Scheibe DIN 125 A 8,4 V2A	●	●	●	●	●	●	●	●
35	500067	Becherschraube M4x12 V2A	●	●	●	●	●	●	●	●
36	483150	Blinddeckel EB	●	●	●	●	●	●	●	●
37	505100	Sechskantmutter M10x1 flache Form	●	●	●	●	●	●	●	●
38	320048	Magnetschalter aus Ms. Kabel 1,5 r	●	●	●	●	●	●	●	●

[illegible]

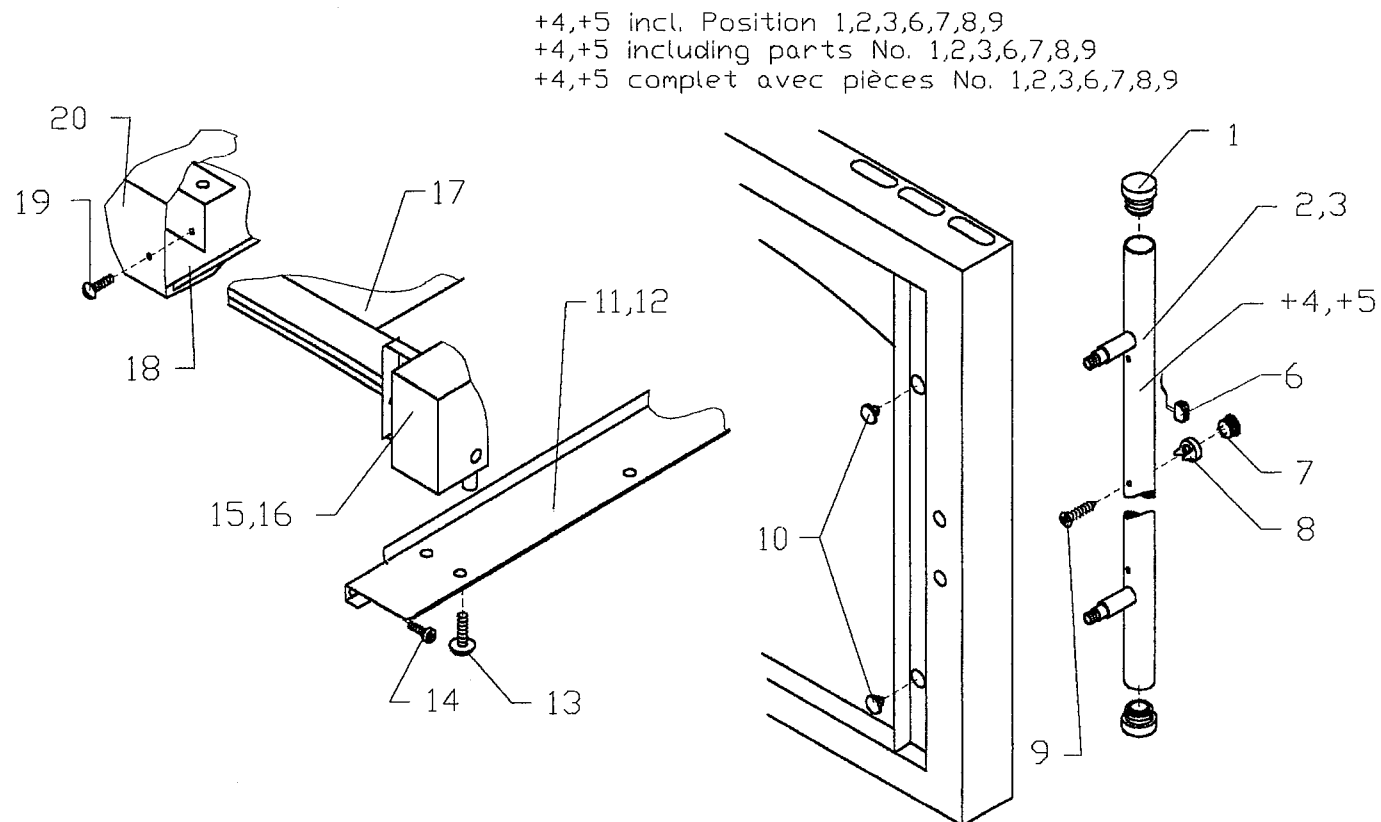
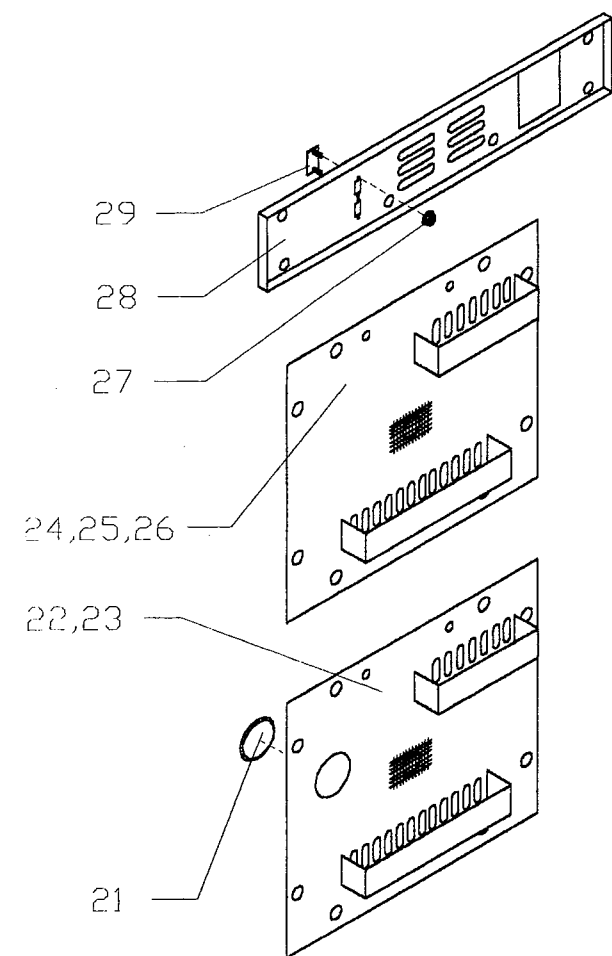
* Linksanschlag
 * Door hinged left
 * Fixation de porte à gauche



Backmaster EB EBC

Pos.	Artikel Nr.	Teile/Benennung	EB 40	EB 60	EB 100	EBC 80	EBC 100	EBC 120	electron	digital
1	425139	Türanschlag Innenscheibe EB Ersatz=	●	●	●	●	●	●	●	●
2	380062	Verschluß EB	●	●	●	●	●	●	●	●
3	380063	Gegenplatte Verschluß EB	●	●	●	●	●	●	●	●
4	416050	Feder f. Verschluß EB	●	●	●	●	●	●	●	●
5	380067	Schieber EB	●	●	●	●	●	●	●	●
6	500133	Senkschraube DIN 965 M5x16 V2A	●	●	●	●	●	●	●	●
7	500243	Senkschraube Türscharnier EB	●	●	●	●	●	●	●	●
8	401044	Türlager oben EB	●	●	●	●	●	●	●	●
9	500047	6kt-Schraube ISO 4017 M8x30 V2A	●	●	●	●	●	●	●	●
10	508017	Scheibe DIN 125 A 8,4 V2A	●	●	●	●	●	●	●	●
11	510016	Zahnscheibe DIN 6797 J8,4 V2A	●	●	●	●	●	●	●	●
12	401047	Distanzplatte Türlager EB	●	●	●	●	●	●	●	●
13	425127	Türdichtung EB Endlosdich	●	●	●	●	●	●	●	●
14	483150	Blinddeckel EB	●	●	●	●	●	●	●	●
15	500069	Blindschraube M12x20 V2A	●	●	●	●	●	●	●	●
16	505027	6kt-Mutter ISO 4032 M12 V4A	●	●	●	●	●	●	●	●
17	401042	Türlager unten EB	●	●	●	●	●	●	●	●
19	407058	Abdeckung EB	●	●	●	●	●	●	●	●
20	500067	Becherschraube M4x12 V2A	●	●	●	●	●	●	●	●
21	508047	Sicherungsblech EB Türlage	●	●	●	●	●	●	●	●
22	412131	Exzenterlager EB	●	●	●	●	●	●	●	●
23	420029	Scharnierhaken EB	●	●	●	●	●	●	●	●
24	472072	Innentür kpl. EB 40	●			●	●		●	●
25	472061	Innentür kpl. EB 60		●			●	●	●	●
26	472066	Innentür kpl. EB 100			●				●	●
27	371039	Abschlußplatte m. Rastfuß	●	●	●	●	●	●	●	●
28	371037	Klemme 4-Leiter grau mit Rastfuß	●	●	●	●	●	●	●	●
29	371038	Klemme 2-Leiter blau mit Rastfuß	●	●	●	●	●	●	●	●
30	508012	Scheibe DIN 125 A 4,3 V2A	●	●	●	●	●	●	●	●
31	505031	6kt-Mutter ISO 4032 M4 V4A D	●	●	●	●	●	●	●	●
32	500095	Linsenschraube DIN 7985 M3x10 V2A	●	●	●	●	●	●	●	●
33	472046	Reflektor links EB 40	●			●	●		●	●
34	472044	Reflektor links EB 60		●			●	●	●	●
35	472042	Reflektor links EB 100			●				●	●
36	314029	Halogen Lampenfassung mit Sockel	●	●	●	●	●	●	●	●
37	312021	Halogenlampe 12 V 20 W für Sockel	●	●	●	●	●	●	●	●
38	401038	Bundbuchse d=6, D=8	●	●	●	●	●	●	●	●
39	472055	Tür außen kpl. EB 40	●			●	●		●	●

Pos.	Artikel Nr.	Teile/Benennung	EB 40	EB 60	EB 100	EBC 80	EBC 100	EBC 120	electron	digital
40	472056	Tür außen kpl. EB 60		●			●		●	●
41	472057	Tür außen kpl. EB 100			●			●	●	●
42	407062	Lamellenstopfen D=28 schwarz	●	●	●	●	●	●	●	●
43	380059	Endstück oben Türgriff EB	●	●	●	●	●	●	●	●
44	412134	Griffscheibe EB	●	●	●	●	●	●	●	●
45	505030	6kt-Mutter ISO 4032 M3 V4A D	●	●	●	●	●	●	●	●
46	510017	Zahnscheibe DIN 6797 J 10,5 V2A	●	●	●	●	●	●	●	●
47	505034	6kt-Mutter ISO 4032 M10 V2A	●	●	●	●	●	●	●	●
48	380061	Schnappverschluß für Innenschei	●	●	●	●	●	●	●	●
49	500191	Linsenschraube DIN 7985 M3x5 V2A	●	●	●	●	●	●	●	●
51	380062	Verschluß EB	●	●	●	●	●	●	●	●
52	500132	Senkschraube DIN 965 M4x25 V2A	●	●	●	●	●	●	●	●
53	322010	Magnet 20x10 mit roter Kappe	●	●	●	●	●	●	●	●
54	630035	BG Türgriff EB 40	●			●			●	●
55	380056	Endstück unten Türgriff EB	●	●	●	●	●	●	●	●
56	403052	Schieberohr EB 40	●			●	●		●	●
57	403046	Schieberohr EB 60		●	●		●	●	●	●
58	630034	BG Türgriff EB 60		●	●		●	●	●	●
59	472045	Reflektor rechts EB 40	●			●	●		●	●
60	472043	Reflektor rechts EB 60		●			●	●	●	●
61	472041	Reflektor rechts EB 100			●				●	●
64	510020	Zahnscheibe DIN 6797 J3,2 V2A	●	●	●	●	●	●	●	●
67	505100	Sechskantmutter M10x1 flache Forr	●	●	●	●	●	●	●	●
68	320061	Magnetschalter 2,5m D=8x60	●	●	●	●	●	●	●	●
72	472060	Innentür kpl. EB 40 Linksansch	●			●	●		●	●
73	472062	Innentür kpl. EB 60 Linksansch		●			●	●	●	●
74	472063	Innentür kpl. EB 100 Linksansch			●				●	●
75	472070	Tür außen kpl. EB 40 Linksausfü	●			●	●		●	●
76	472071	Tür außen kpl. EB 60 Linksausfü		●			●	●	●	●
77	472065	Tür außen kpl. EB 100 Linksausfü			●				●	●
78	472118	Reflektor links EB 40/00	●			●	●		●	●
79	472120	Reflektor links EB 60/00		●				●	●	●
80	472122	Reflektor links EB 100/00			●				●	●
81	472117	Reflektor rechts EB 40/00	●			●	●		●	●
82	472119	Reflektor rechts EB 60/00		●				●	●	●
83	472121	Reflektor rechts EB 100/00			●				●	●



EB40 ab Geräte Nr. 500
 EB40 from unit No. 500
 EB40 a partir de e'appareil No. 500
 EB60 ab Geräte Nr. 600
 EB60 from unit No. 600
 EB60 a partir de e'appareil No. 600
 EB100 ab Geräte Nr. 400
 EB100 from unit No. 400
 EB100 a partir de e'appareil No. 400

+4,+5 incl. Position 1,2,3,6,7,8,9
 +4,+5 including parts No. 1,2,3,6,7,8,9
 +4,+5 complet avec pièces No. 1,2,3,6,7,8,9
 EBC80 ab Geräte Nr. 400
 EBC80 from unit No. 400
 EBC80 a partir de e'appareil No. 400
 EBC100 ab Geräte Nr. 400
 EBC100 from unit No. 400
 EBC100 a partir de e'appareil No. 400
 EBC120 ab Geräte Nr. 400
 EBC120 from unit No. 400
 EBC120 a partir de e'appareil No. 400

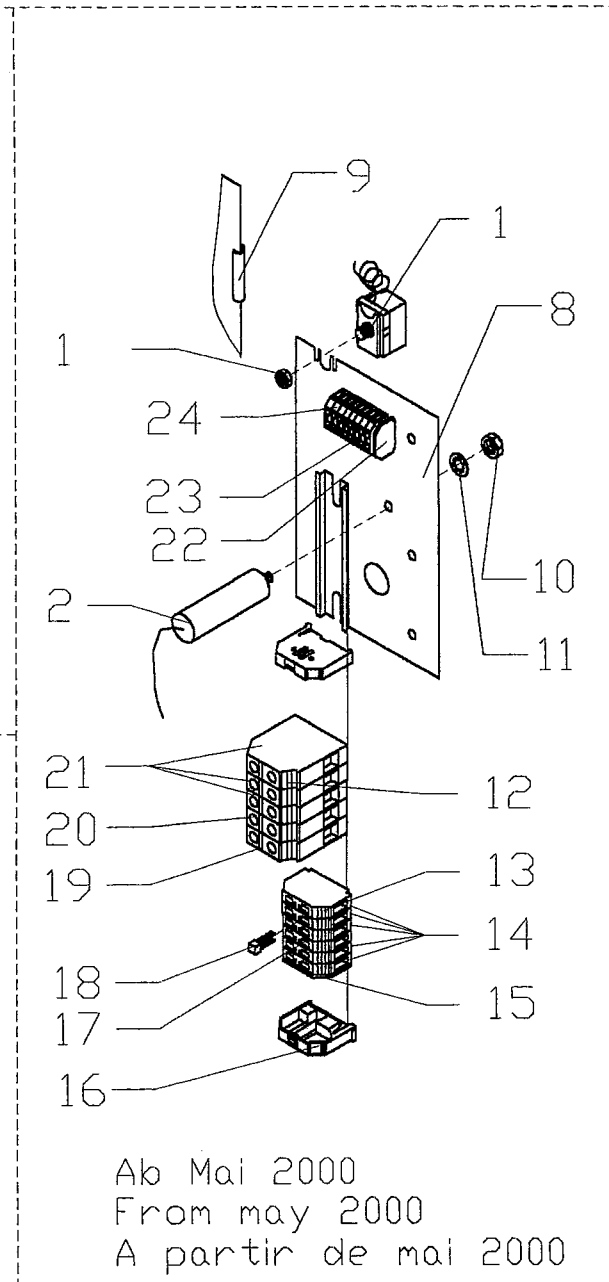
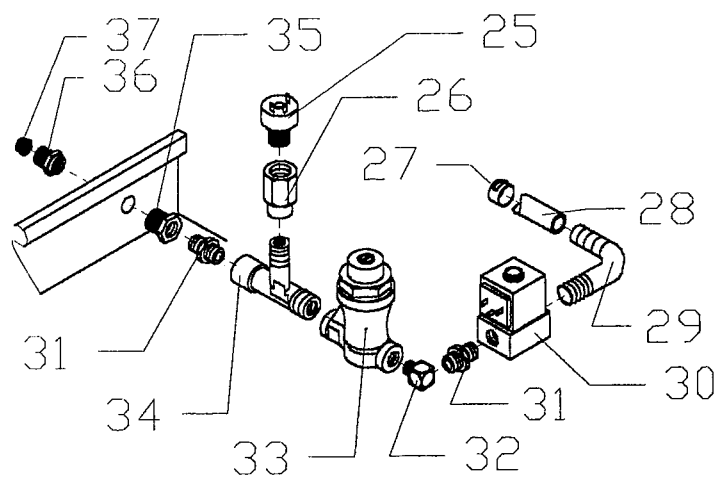
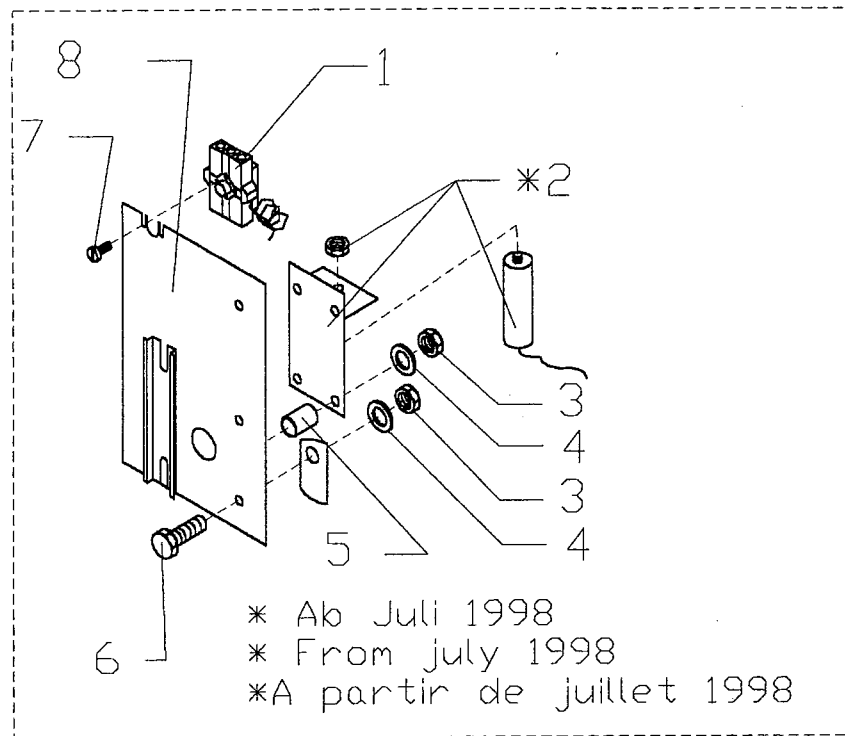
EB40 ab Geräte Nr. 502
 EB40 from unit No. 502
 EB40 a partir de e'appareil No. 502
 EB60 ab Geräte Nr. 757
 EB60 from unit No. 757
 EB60 a partir de e'appareil No. 757

EB100 ab Geräte Nr. 479
 EB100 from unit No. 479
 EB100 a partir de e'appareil No. 479
 EBC80 ab Geräte Nr. 401
 EBC80 from unit No. 401
 EBC80 a partir de e'appareil No. 401

EBC100 ab Geräte Nr. 407
 EBC100 from unit No. 407
 EBC100 a partir de e'appareil No. 407
 EBC120 ab Geräte Nr. 419
 EBC120 from unit No. 419
 EBC120 a partir de e'appareil No. 419

Backmaster EB EBC

[illegible][illegible]



EB40 ab Geräte Nr. 510
 EB40 from unit No. 510
 EB40 a partir de e'appareil No. 510

EB60 ab Geräte Nr. 628
 EB60 from unit No. 628
 EB60 a partir de e'appareil No. 628

Backmaster EB EBC

[illegible][illegible]

This image shows a single sheet of white paper with horizontal ruling lines. The lines are evenly spaced and run across the width of the page. There are no margins, text, or other markings on the paper.

This image shows a single sheet of white paper with horizontal ruling lines. The lines are evenly spaced and run across the width of the page. There are no margins, text, or other markings on the paper.



Eloma GmbH
Otto-Hahn-Straße 10
82212 Maisach
Germany

Phone: +49 (0) 8141 395-0
Fax: +49 (0) 8141 395-130
www.eloma.com
info@eloma.com

22.10.2002

Artikel Nr. 906053

Ausgabe leh/bre/08/01

Technische Änderungen vorbehalten !