

Ersatzteilliste – Spare Part List

**Kombidämpfer Genius^{MT} 2011 1221 2021 Elektro Gas
Serie/16_1**

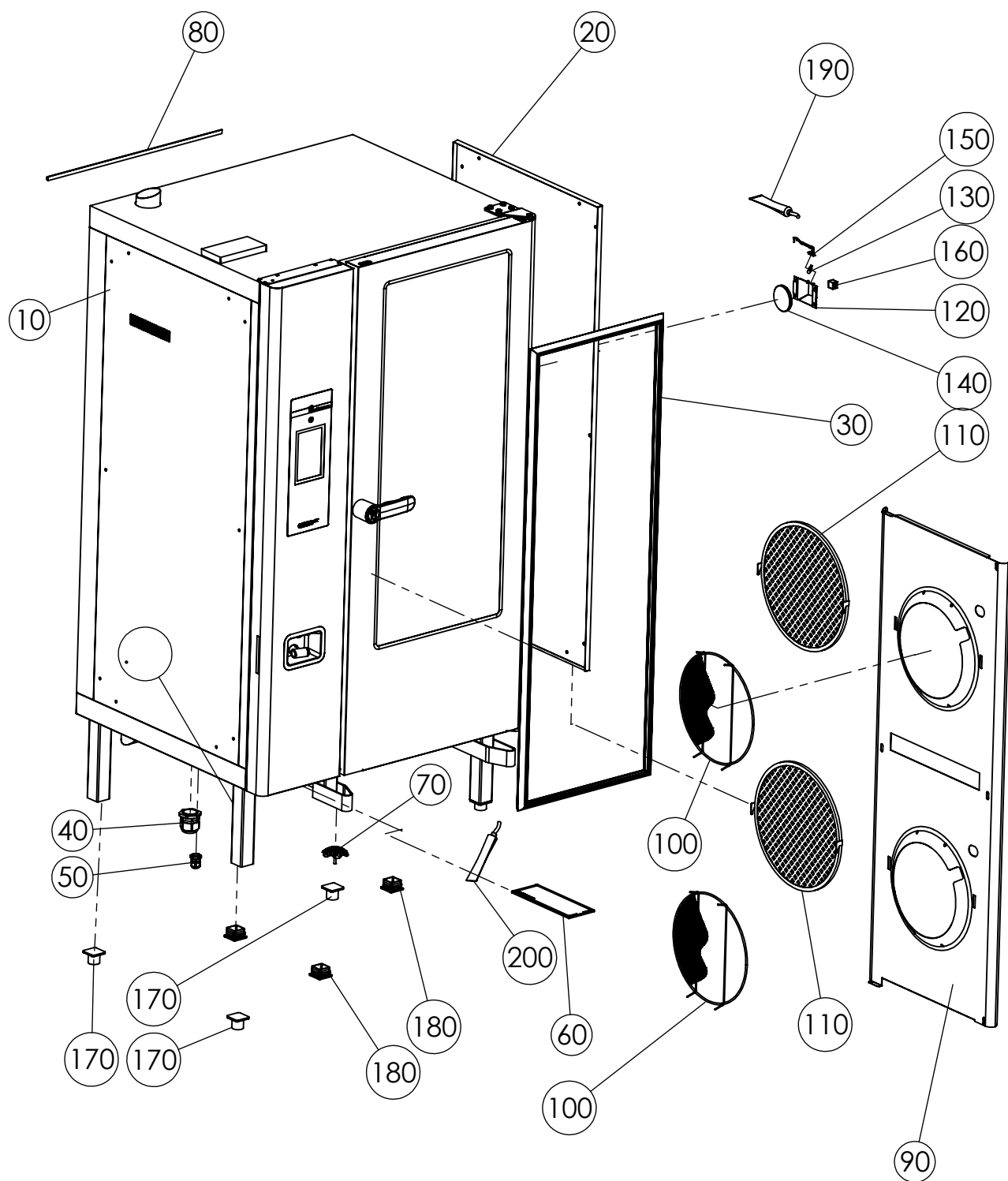
**Combi Steamer Genius^{MT} 2011 1221 2021 Electric Gas
Series/16_1**



Inhaltsverzeichnis - Index of contents

| | | |
|--|--|----|
| Montageteile lose 2011 Serie/16 | Assembly parts 2011 Series/16 | 3 |
| Montageteile lose 1221 2021 Serie/16 | Assembly parts 1221 2021 Series/16 | 5 |
| Bedienteil GeniusMT 2011 1221 2021 Serie/16 | Control unit GeniusMT 2011 1221 2021 series/16 | 7 |
| Steuerplatine und Zusatzplatine Gas 2011 1221 2021 | Control Board and Gas control board 2011 1221 2021 | 9 |
| Tür und Türverschluss 2011 | Door and Door Latch 2011 | 11 |
| Tür und Türverschluss 1221 2021 | Door and Door Latch 1221 2021 | 13 |
| Motor und Heizung Elektro 2011 | Motor and Heating Element Electric 2011 | 15 |
| Motor und Heizung Elektro 1221 2021 | Motor and Heating Element Electric 1221 2021 | 17 |
| Elektroblech GeniusMT 2011 Elektro Serie/16 | Electrical-Assy GeniusMT Electro 2011 Series/16 | 19 |
| Elektroblech GeniusMT 2011 Gas Serie/16 | Electrical-Assy Genius-MT Gas 2011 Series/16 | 21 |
| Elektroblech GeniusMT 1221 Elektro Serie/16 | Electrical-Assy GeniusMT Electro 1221 Series/16 | 23 |
| Elektroblech GeniusMT 1221 Gas Serie/16 | Electrical-Assy Genius-MT Gas 1221 Series/16 | 25 |
| Elektroblech GeniusMT 2021 Elektro Serie/16 | Electrical-Assy GeniusMT Electro 2021 Series/16 | 27 |
| Elektroblech GeniusMT 2021 Gas Serie/16 | Electrical-Assy Genius-MT Gas 2021 Series/16 | 29 |
| E-Teile lose 2011 1221 2021 | E-parts miscellaneous 2011 1221 2021 | 31 |
| Schlauchaufroller 2011 | Hose Retractor 2011 | 33 |
| Schlauchaufroller 1221 2021 | Hose Retractor 1221 2021 | 35 |
| Ventile 2011 1221 2021 Serie/16 | Solenoid Valve 2011 1221 2021 series/16 | 37 |
| Autoclean 2011 1221 2021 Serie/16 | Autoclean 2011 1221 2021 Serie/16 | 39 |
| Ablauf und Abluftrohr 2011 1221 2021 | Drain and Exhaust Air Pipe 2011 1221 2021 | 41 |
| Zuluft 2011 1221 2021 | Air Supply 2011 1221 2021 | 43 |
| Gas GeniusMT 2011 Serie/16 | Gas GeniusMT 2011 Series/16 | 45 |
| Gas GeniusMT 1221 2021 Serie/16 | Gas GeniusMT 1221 2021 Series/16 | 47 |
| Hordengestellwagen 2011 1221 2021 | Trolleys 2011 1221 2021 | 49 |
| Kabelbaum GeniusMT 611 1011 | Harness GeniusMT 611 1011 | 51 |

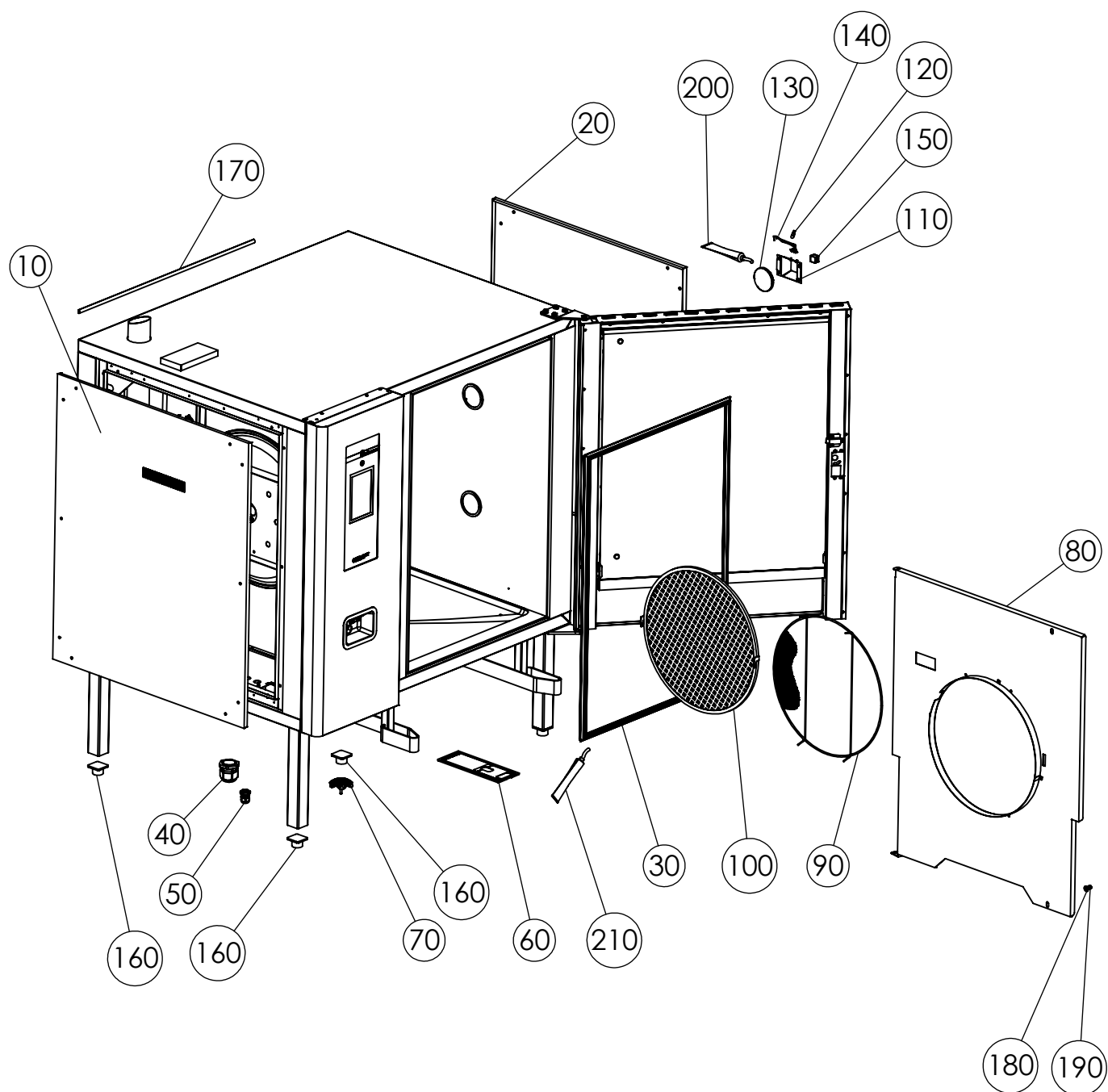
Montageteile lose 2011 Serie/16 - Assembly parts 2011 Series/16



Montageteile lose 2011 Serie/16 - Assembly parts 2011 Series/16

| | | | |
|-----|-----------|--|--|
| 10 | EL0768138 | Seitenwand links 20-11 | Left side panel 20-11 |
| 20 | EL0768111 | Seitenwand rechts 20-11 | Right side panel 20-11 |
| 30 | EL2000214 | Türdichtung 20-11 | Door gasket 20-11 |
| 40 | EL0658316 | Verschraubung PG 36 mit Gegenmutter | PG 36 fitting with locknut |
| 50 | EL0580465 | Verschraubung PG 16 mit Gegenmutter | PG 16 fitting with locknut |
| 60 | EL0751782 | Filter Lüftungsschacht | Filter ventilation shaft |
| 70 | EL781681 | Siebkappe | Strainer cap |
| 80 | EL0374407 | Dichtprofil | Sealing gasket |
| 90 | EL0508158 | Luftleitblech 20-11 | Air baffle 20-11 |
| 100 | EL0377791 | Schutzgitter 20-11 | Blow wheel protection Grid 20-11 |
| 110 | EL0760749 | Fettfilter 20-11 | Grease filter 20-11 |
| 120 | EL0742236 | Reflektorblech- Garraumbeleuchtung | Reflector plate cooking chamber |
| 130 | EL0570478 | Halogenlampe 12 V , 20 W | Halogen lamp 12V, 20W |
| 140 | EL0747521 | Glasscheibe Beleuchtung | Glass lighting |
| 150 | EL0577294 | Halogenfassung mit Flansch | Halogen socket with flange |
| 160 | EL0658235 | Leuchtenklemme 15 A , 2-polig | Luminaire terminal 15 A, 2-pole |
| 170 | EL0563072 | Stellfuss | Adjustable foot |
| 180 | EL0768871 | Lamellenstopfen-VL-50x50-schwarz | Ribbed plug-VL-50x50-black |
| 190 | EL0872849 | Silikonkleber Novasil S25 Kartusche 80ml | Silicone adhesive Novasil S25 cartridge 80ml |
| 200 | EL0502402 | Silikonkleber 100ml | Silicone adhesive 100ml |

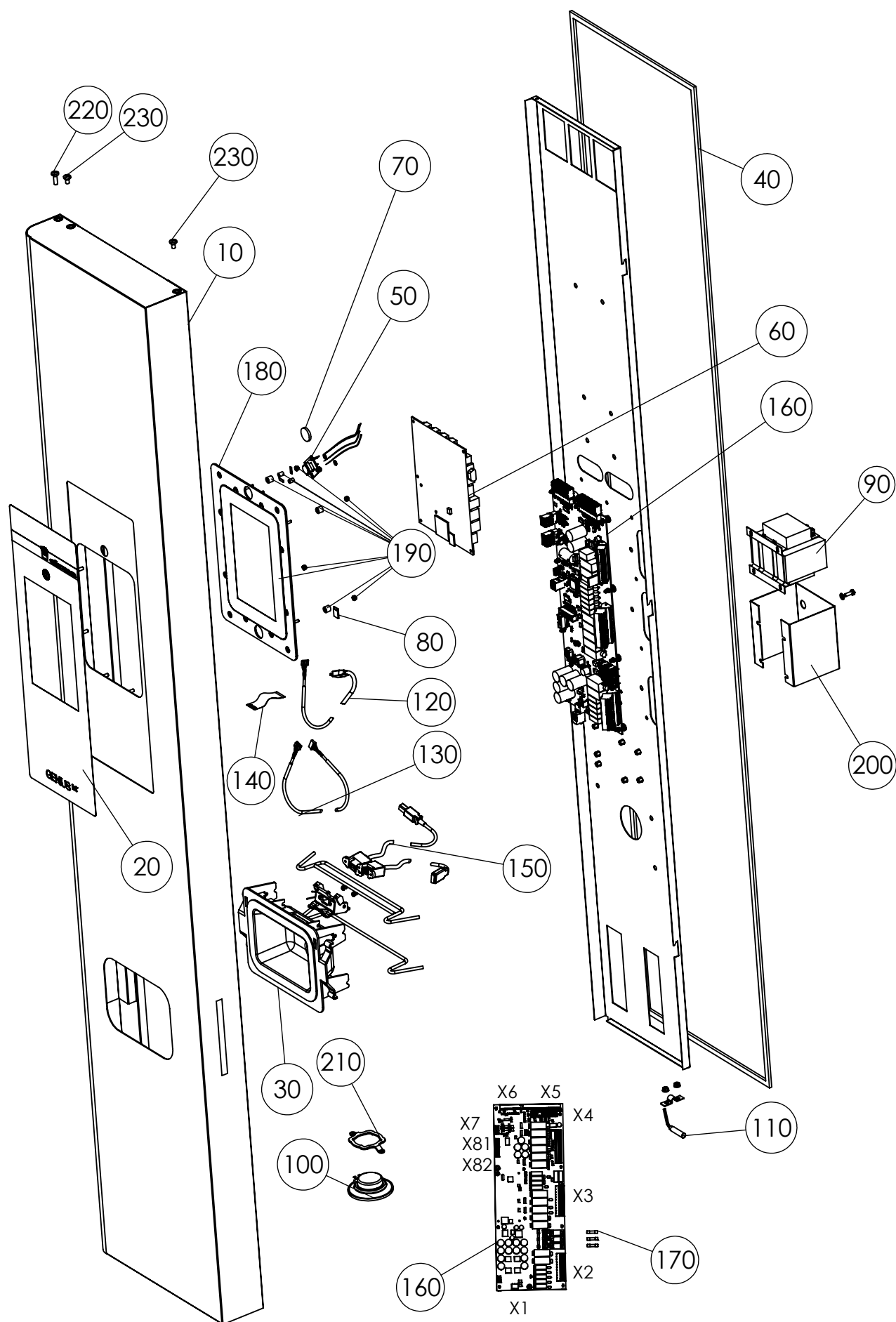
Montageteile lose 1221 2021 Serie/16 - Assembly parts 1221 2021 Series/16



Montageteile lose 1221 2021 Serie/16 - Assembly parts 1221 2021 Series/16

| | | | |
|-----|-----------|--|--|
| 10 | EL0747807 | Seitenwand links 12-21 | Left side panel 12-21 |
| | EL0747793 | Seitenwand links 20-21 | Left side panel 20-21 |
| 20 | EL0746630 | Seitenwand rechts 12-21 | Right side panel 12-21 |
| | EL0746940 | Seitenwand rechts 20-21 | Right side panel 20-21 |
| 30 | EL2000215 | Türdichtung 12-21 | Door gasket 12-21 |
| | EL2000216 | Türdichtung 20-21 | Door gasket 20-21 |
| 40 | EL0326941 | Verschraubung PG 36 mit Gegenmutter | PG 36 fitting with locknut |
| 50 | EL0580465 | Verschraubung PG 16 mit Gegenmutter | PG 16 fitting with locknut |
| 60 | EL0751782 | Filter Lüftungsschacht | Filter ventilation shaft |
| 70 | EL0781681 | Siebkappe | Strainer cap |
| 80 | EL0746908 | Luftleitblech 12-21 | Air baffle 12-21 |
| | EL0507701 | Luftleitblech 20-21 | Air baffle 20-21 |
| 90 | EL0755338 | Schutzgitter 1220-21 | Blow wheel protection Grid 1220-21 |
| 100 | EL0760757 | Fettfilter 1220-21 | Grease filter 1220-21 |
| 110 | EL0742236 | Reflektorblech- Garraumbeleuchtung | Reflector plate cooking chamber |
| 120 | EL0570478 | Halogenlampe 12 V , 20 W | Halogen lamp 12V, 20W |
| 130 | EL0747521 | Glasscheibe Beleuchtung | Glass lighting |
| 140 | EL0577294 | Halogenfassung mit Flansch | Halogen lamp socket with flange |
| 150 | EL0658235 | Leuchtenklemme 15 A , 2-polig | Luminaire terminal 15 A, 2-pole |
| 160 | EL0563072 | Stellfuss | Adjustable foot |
| 170 | EL0374407 | Dichtprofil | Sealing gasket |
| 180 | EL0000582 | Scheibe DIN 9021 6,4 V2A | Washer DIN 9021 6.4 V2A |
| 190 | EL0004030 | Hutmutter DIN 917 M6 V2A | Cap nut DIN 917 M6 V2A |
| 200 | EL0872849 | Silikonkleber Novasil S25 Kartusche 80ml | Silicone adhesive Novasil S25 cartridge 80ml |
| 210 | EL0500402 | Silikonkleber 100ml | Silicone adhesive 100ml |

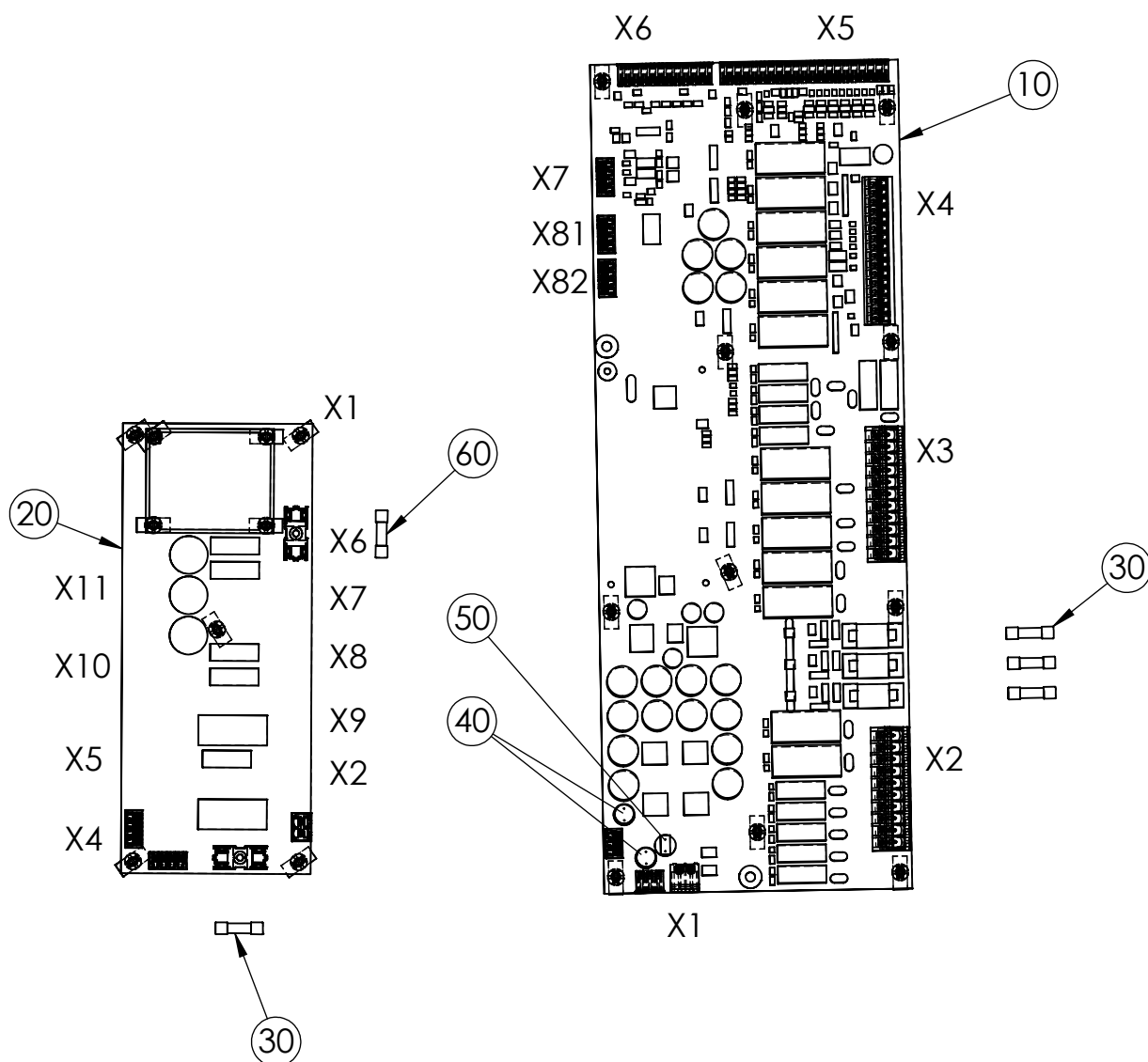
Bedienteil GeniusMT 2011 1221 2021 Serie/16 - Control unit GeniusMT 2011 1221 2021 series/16



Bedienteil GeniusMT 2011 1221 2021 Serie/16 - Control unit GeniusMT 2011 1221 2021 Series/16

| | | | |
|-----|------------------|---|---|
| 10 | EL2000159 | Bedienblende Rahmen mit Griffmulde 2011 | Control panel frame with handle 2011 |
| | EL2000327 | Bedienblende Rahmen mit Griffmulde 1221 | Control panel frame with handle 1221 |
| | EL2000153 | Bedienblende Rahmen mit Griffmulde 2021 | Control panel frame with handle 2021 |
| 20 | EL2000587 | Bedienfolie Genius MT Eloma | Keypad foil Genius MT Eloma |
| | EL2001152 | Bedienfolie Genius MT Kitazawa | Operating/Keypad foil Genius MT Kitazawa |
| | EL2001688 | Bedienfolie Genius MT Rosinox | Operating/Keypad foil Genius MT Rosinox |
| 30 | EL0500518 | Griffmulde Schlauchbrause kpl. schwarz | Handle shower hose assy. black |
| 40 | EL0742317 | Dichtungsrahmen 2011 | Sealing gasket 2011 |
| | EL0742325 | Dichtungsrahmen 1221 | Sealing gasket 1221 |
| | EL0742333 | Dichtungsrahmen 2021 | Sealing gasket 2021 |
| 50 | EL2000698 | TASTER EIN-AUS 013 | Button ON-OFF |
| 60 | EL2000709 | CPU BOARD C2 | CPU BOARD C2 - main controller board |
| 70 | EL2001230 | Batterie 3V | Battery 3V |
| 80 | EL2000937 | MICRO SD CARD 4GB LINUX IMAGE | Micro SD Card 4GB with Linux image |
| 90 | EL2000522 | Transformator 18V | Transformer 18V |
| 100 | EL2004765 | Lautsprecher | Speaker |
| 110 | EL2001190 | Befestigung Magnetschalter ET Magnetschalter Halbe Rohrschelle Kabeltülle schwarz Sechskantmutter M4 DIN 934 Scheibe A4,3 DIN 125 | Mounting kit magnetic switch ET magnetic switch Half Pipe Clamp Black cable grommet M4 hexagon nut DIN 934 Washer A4, 3 DIN 125 |
| 120 | EL2000933 | Kabel USB (Touch C2 USB 270 mm) | USB cable (USB Touch C2 270 mm) |
| 130 | EL2000934 | KABEL AUDIO L=800mm | CABLE AUDIO L = 800mm |
| 140 | EL2000935 | KABEL FLACH L=200mm, 40 PIN | CABLE FLAT L = 200mm, 40 PIN |
| 150 | EL2000268 | USB B KABEL STANDGERÄTE A AUF A | USB B CABLE STAND A DEVICE ON A |
| 160 | EL2001850 | IO-Platine mit Dokumentation | Main Control I/O-board kit with doc |
| 170 | EL0510583 | Feinsicherung 4 A T | Fuse T 4 A |
| 180 | EL2001640 | Anzeigenbaugruppe MT (ET) | Display Kit GeniusMT |
| 190 | EL2000113 | Befestigungssatz ET | Mounting Kit ET |
| | | Scheibe DIN 125 A4,3 V2A | Washer DIN 125 A4, 3 V2A |
| | | Mutter DIN 934 M4 V2A | Nut DIN 934 M4 V2A |
| | | Linsenschraube DIN 7985 M3X8 V2A | Oval head screw DIN 7985 M3X8 V2A |
| | | Sicherungsmutter DIN 985 M4 V2A | Locking nut DIN 985 M4 V2A |
| | | Befestigungssteg KPL.6102011/122021 | Securing web KPL.6102011/122021 |
| | | Distanzhülse Schalter | Spacer sleeve switch |
| | | Sicherungsmutter DIN 985 M3 V2A | Locking nut DIN 985 M3 V2A |
| | | Linsenschraube DIN 7985 M4X6 V2A | Oval head screw DIN 7985 M4X6 V2A |
| | | Abstandshalter 3x10x0,8mm | Spacer 3x10x0 8mm |
| 200 | EL2001187 | Schutz 2011 | Transformer protection 2011 |
| 210 | EL0758582 | Halter Lautsprecher | Holder speaker |
| 220 | EL0010685 | LINSENSCHRAUBE DIN 7985 M5X16 V2A | Lens screw DIN 7985 M5X16 V2A |
| 230 | EL0189405 | LINSENSCHRAUBE DIN 7985 M5X10 V2A | Lens screw DIN 7985 M5X10 V2A |

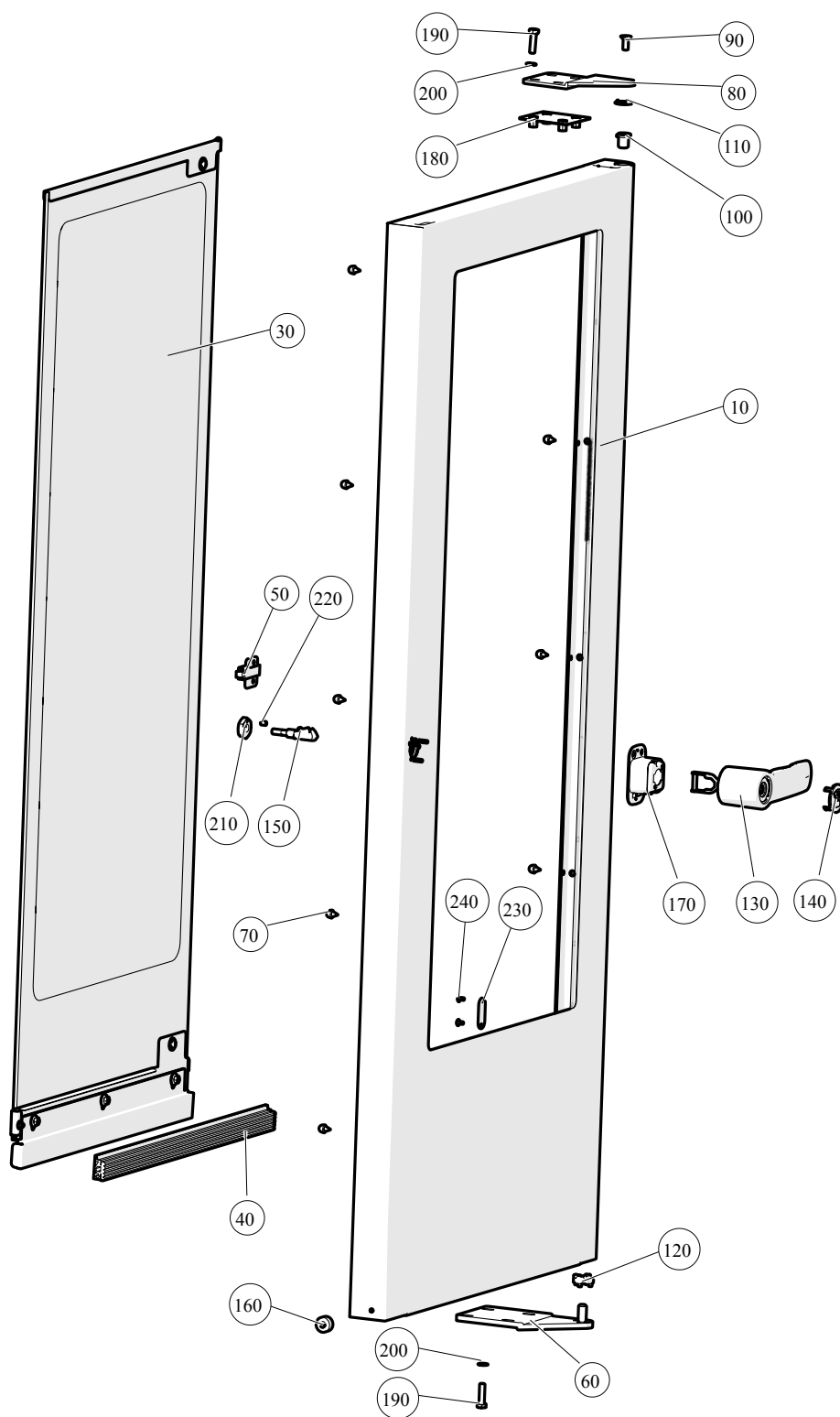
Steuerplatine und Zusatzplatine Gas 2011 1221 2021 Serie/16 - Control Board and Gas control board series/16



Steuerplatine Zusatzplatine Gas 2011 1221 2021 /16 - Control Board Gas control board 2011 1221 2021 /16

| | | | |
|----|-----------|-----------------------------------|------------------------------------|
| 10 | EL2001850 | IO-Platine mit Dokumentation | Main Control I/O-board kit wih doc |
| 20 | EL2000917 | Zusatzplatine Gas | Gas Control Board |
| 30 | EL0510583 | Feinsicherung 4 A T | Fuse 4 AT |
| 40 | EL2001651 | KLEINSTSICHERUNG 1 A TRAEGE RUND | FUSE 1A delayed ROUND |
| 50 | EL2001652 | KLEINSTSICHERUNG 5 A TRAEGE ECKIG | FUSE 5 A delayed SQUARE |
| 60 | EL2002285 | FEINSICHERUNG 2,5 A TRAEGE | Fuse 2,5 A delayed |

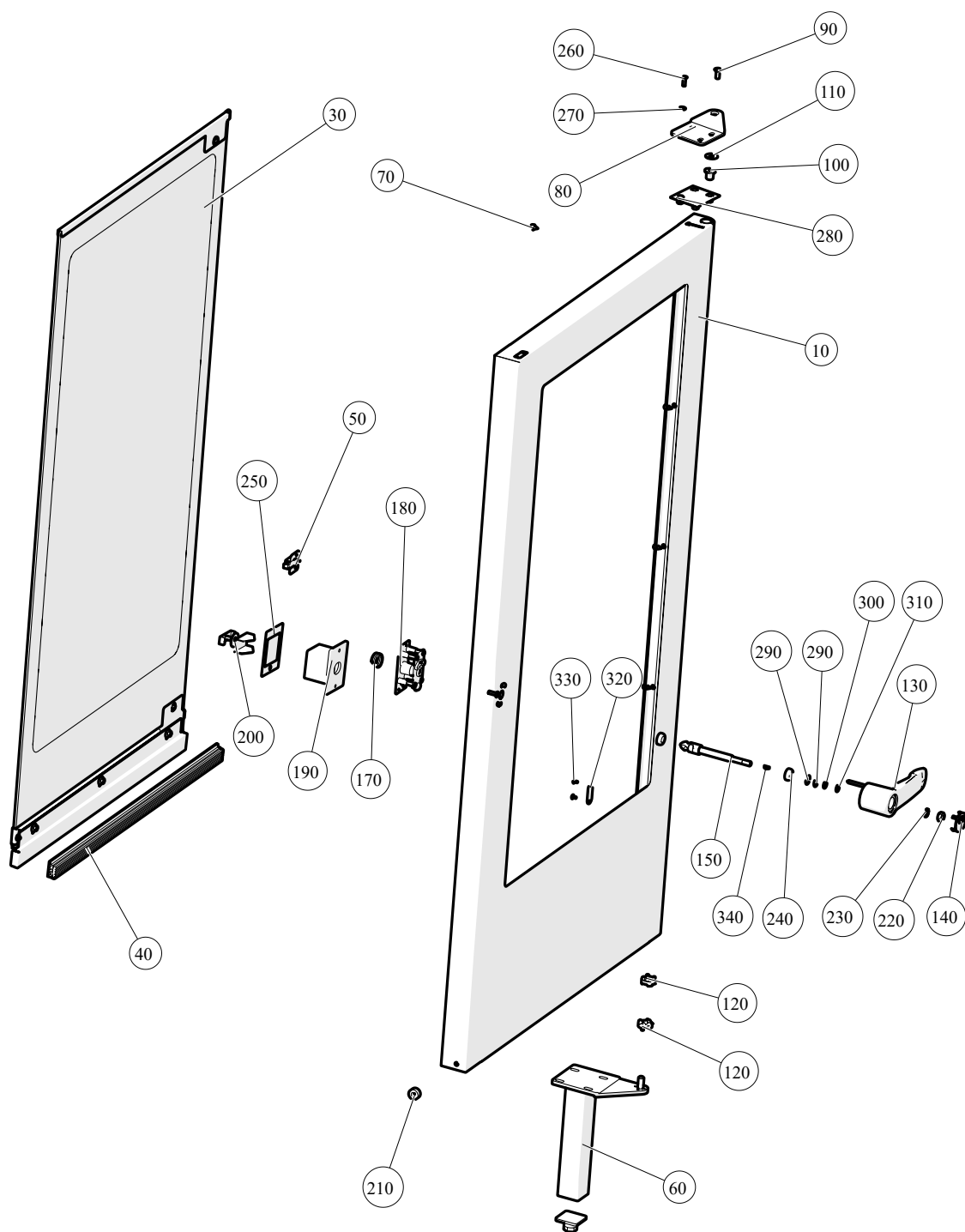
Tür und Türverschluss 2011 Serie/16 - Door and Door Latch 2011 series/16



Tür und Türverschluss 2011 Serie/16 - Door and Door Latch 2011 series/16

| | | | |
|-----|-----------|--|--|
| 10 | EL2000477 | Außentür ohne Griff 2011 | Exterior door without handle 2011 |
| 30 | EL0766437 | Innenscheibe mont. 20-11 | Inner glass panel mont. 20-11 |
| 40 | EL0509204 | Profildichtung Hordenwagen | Gasket rack trolley |
| 50 | EL0770051 | Türriegel Innentür | Door latch inner door |
| 60 | EL0879878 | Scharnierplatte unten | Hinge plate bottom |
| 70 | EL0886726 | Gummipuffer Silikon schwarz | Rubber buffer Silicon black |
| 80 | EL0885118 | Scharnierplatte oben | Hinge plate top |
| 90 | EL0209791 | Senkschraube M8x20 DIN 7991 | Countersunk screw M8x20 DIN 7991 |
| 100 | EL0741434 | Exzenter | Excenter |
| 110 | EL0758868 | Sicherungsscheibe | Lock washer |
| 120 | EL0875023 | Rastscheibe | Locking disk |
| 130 | EL2000038 | BG Türverschuß Türseite kompl. (N°140+170) | Door lock - door side compl. (N°140+170) |
| 140 | EL2000095 | Deckel Türgriff | Door handle cover |
| 150 | EL2004016 | Türkloben kpl. 2011 rechts | Door block cpl. 20-11 right |
| 160 | EL0372994 | Magnet | Magnet |
| 170 | EL2000644 | Hygieneinsatz | Hygienic isolation |
| 180 | EL0745995 | Gegenblech | Counter plate |
| 190 | EL0549304 | Sechskantschraube DIN933 M8X30 V2A | Hex bolt DIN933 M8X30 V2A |
| 200 | EL0892920 | Zahnscheibe DIN6797 J8,4 V2A | Washer DIN6797 J8, 4 V2A |
| 210 | EL0767476 | Sicherungsmutter SW 27x8 1.4305 | Lock nut SW 27x8 1.4305 |
| 220 | EL0767476 | Gewindestift DIN 916 M6x8 V2A | Threaded pin DIN 916 M6x8 V2A |
| 230 | EL2005500 | Deckplatte Tür 6-11 10-11 | Cover plate door 6-11 10-11 |
| 240 | EL0525316 | Becherschraube M4x8 V2A | Cup screw M4x8 SS |

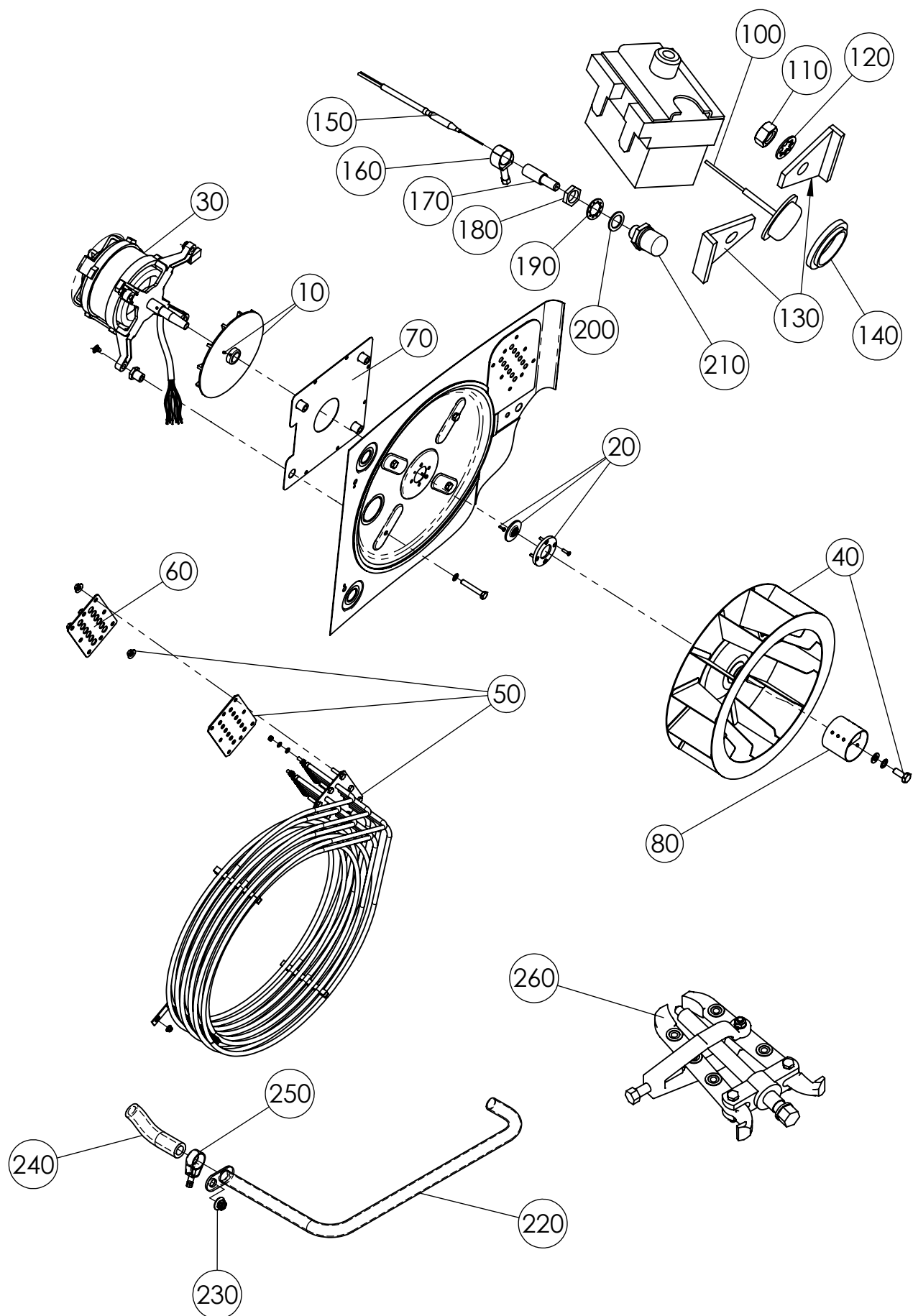
Tür und Türverschluss 2021 1221 Serie/16 - Door and Door Latch 2021 1221 series/16



Tür und Türverschluss 2021 1221 - Door and Door Latch 2021 1221

| | | | |
|-----|-----------|--|---|
| 10 | EL2000490 | AUSSENTÜR OHNE GRIFF 2021 | EXTERIOR DOOR WITHOUT HANDLE 2021 |
| 10 | EL2000501 | AUSSENTÜR OHNE GRIFF 1221 | EXTERIOR DOOR WITHOUT HANDLE 1221 |
| 30 | EL0769819 | INNENSCHIEBE MONT. TÜR 2021 | INNER GLASS PANEL MONT. 2021 |
| 30 | EL0778885 | INNENSCHIEBE MONT. TÜR 1221 | INNER GLASS PANEL MONT. 1221 |
| 40 | EL0549207 | TÜRDICHTUNG 2011 1221 2021 | GASKET 2011 1221 2021 |
| 50 | EL0770051 | TÜRRIEGEL INNENTÜR | DOOR LATCH INNER DOOR |
| 60 | EL0875597 | SCHARNIERPLATTE MIT FUSS 2021 | HINGE PLATE WITH FOOT 2021 |
| 60 | EL0875597 | SCHARNIERPLATTE MIT FUSS 1221 | HINGE PLATE WITH FOOT 1221 |
| 70 | EL0886726 | GUMMIPUFFER SILIKON SCHWARZ | RUBBER BUFFER SILICON BLACK |
| 80 | EL0885118 | SCHARNIERPLATTE OBEN | HINGE PLATE TOP |
| 90 | EL0209791 | SENKSCHRAUBE DIN 7991 M8X20 V2A | COUNTERSUNK SCREW M8X20 DIN 7991 |
| 100 | EL0741434 | EXZENTER | EXCENTER |
| 110 | EL0758868 | SICHERUNGSSCHIEBE | LOCK WASHER |
| 120 | EL0875023 | RASTERSCHIEBE | LOCKING DISK |
| 130 | EL2000098 | TÜRGRIF 1221 2021 | DOOR HANDLE COMPL. 1221 2021 |
| 140 | EL2000095 | DECKEL TÜRGRIF | DOOR HANDLE COVER |
| 150 | EL0758280 | FANGBOLZEN TÜRGRIF 1221 2021 AUTOCLEAN | CATCHER DOOR HANDLE 1221 2021 CAR CLEAN |
| 170 | EL0897531 | SPIRALFEDER | SPIRAL SPRING |
| 180 | EL0748056 | VERSCHLUSS TÜRSEITE | SHUTTER DOOR SIDE |
| 190 | EL0749567 | UBG TÜRVERSCHLUSS GERAETESEITE | SUBASS. DOOR LOCK DEVICE SIDE |
| 200 | EL0749583 | UBG NOT-AUF D2K | SUBASS. EMERGENCY OPENING |
| 210 | EL0372994 | MAGNET | MAGNET |
| 220 | EL0012319 | MUTTER DIN 934 M10 V2A | HEXAGON NUT DIN 934 M4 V2A |
| 230 | EL0349771 | FAECHERSCHIEBE DIN 6798 A10 V2A | LOCK WASHER DIN6798 A10 V2A |
| 240 | EL0766240 | AXIAL-RILLENKUGELLAGER | AXIAL GROOVE BALL BEARINGS |
| 250 | EL0614432 | DICHTUNG TÜRGRIF GERÄTESEITE | SEAL DOOR HANDLE SIDE OF THE DEVICE |
| 260 | EL0549304 | SECHSKANTSCHRAUBE DIN 933 M8X30 V2A | HEX BOLT DIN933 M8X30 V2A |
| 270 | EL0892920 | ZAHNSCHIEBE DIN 6797 J8,4 V2A | WASHER DIN6797 J8, 4 V2A |
| 280 | EL0745995 | GEGENBLECH | COUNTER PLATE |
| 290 | EL0584339 | PASSSCHIEBE DIN 988 14X20X0,5 V2A | FIT WASHER DIN 988 10X16X0,5 V2A |
| 300 | EL0760943 | PASSSCHIEBE DIN 988 10X16X1 V2A | FIT WASHER DIN 988 10X16X1 V2A |
| 310 | EL0760951 | PASSSCHIEBE DIN 988 10X16X0,5 V2A | FIT WASHER DIN 988 10X16X0,5 V2A |
| 320 | EL2005500 | DECKPLATTE TÜR 6-11 10-11 | COVER PLATE DOOR 6-11 10-11 |
| 330 | EL0525316 | BECHERSCHRAUBE M4X8 V2A | CUP SCREW M4X8 V2A |
| 340 | EL0760978 | SCHIEBENFEDER DIN 6888 4x5 | SPRING WASHER DIN 6888 4x5 |

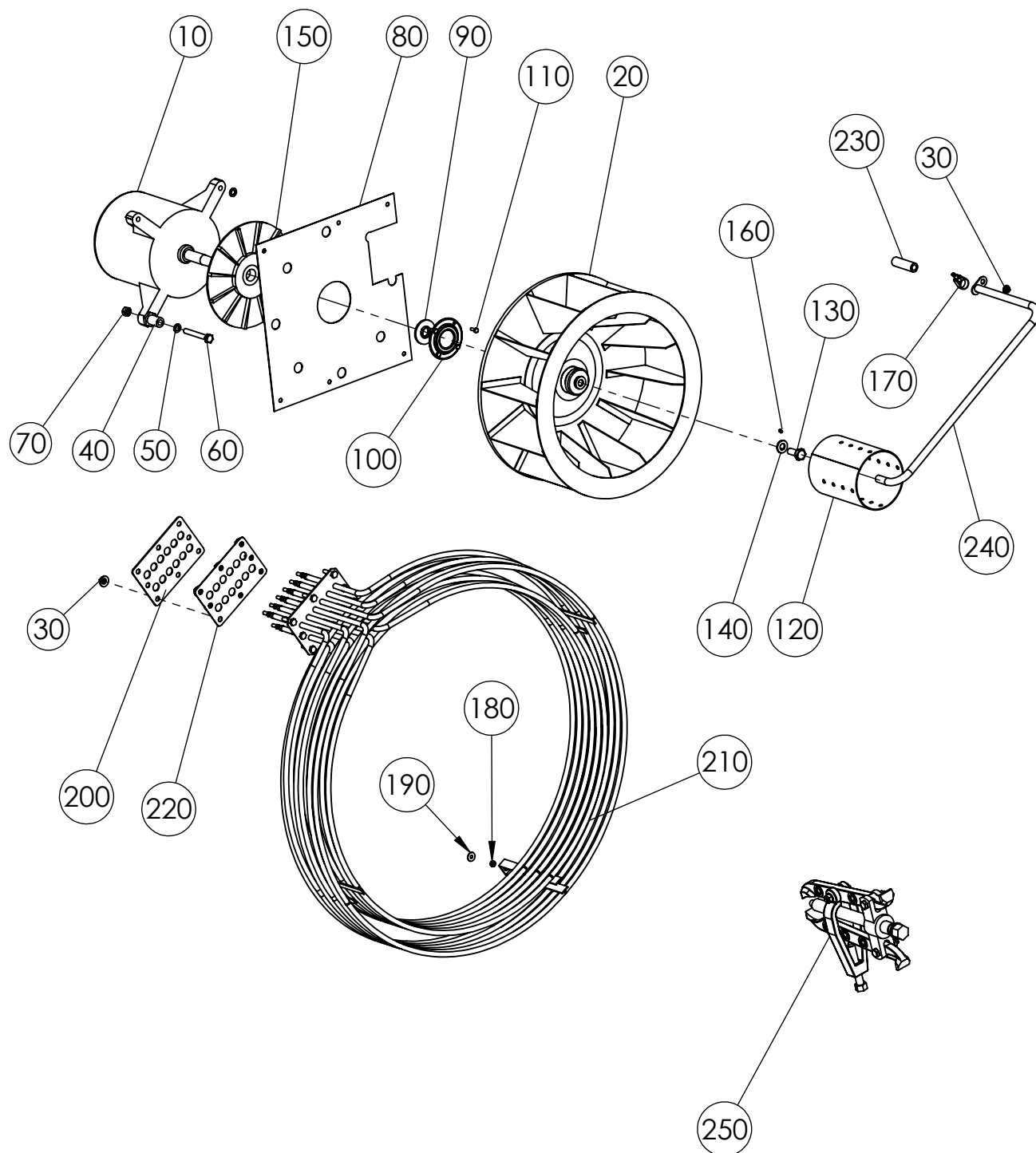
Motor und Heizung Elektro 2011 Serie/16 - Motor and Heating Element Electric 2011 series/16



Motor und Heizung Elektro 2011 - Motor and Heating Element Electric 2011

| | | | |
|-----|-----------------------------------|---|---|
| 10 | EL0504708 | Kühlrad Gebläse 611 1011 2011 (ET) Kühlrad Motor D2K 6/10-11 Gewindestift DIN 915 M5X6 ST BLANK | Cooling wheel 611 1011 2011 (ET) Cooling wheel motor 6/10-11 Grub screw DIN 915 M5x6 ST |
| 20 | EL0776114 | UBG Wellenabdichtung D2K06 611/1011/2011 Wellendichtring 17/16X41X3 Dichtungshalter 6-10/11 2011 Linsenschraube DIN 7985 M4X10 V2A | Kit shaft seal D2K06 611/1011/2011 Shaft sealing ring 17/16X41X3 Seal holder 6-10/11 2011 Oval head screw DIN 7985 M4X10 V2A |
| 30 | EL0750875 | UBG Montage Motor 06 GAS 61011 | Compl. motor assy 06 GAS 611 1011 2011 - motor and motor installation parts |
| 40 | EL0749362 | UBG Lüfterrad D2K 611/1011/2011 Keilsi. Scheibenpaar 10,7 A4 DIN 25201 Lüfterrad 350X110 D2K 611/1011/2011 Sechskantschraube DIN 933 M10X25 V2A | Kit fan wheel D2K 611/1011/2011 Locking disc 10,7 A4 DIN 25201 Fan wheel 350X110 D2K 611/1011/2011 Hexagonal screw DIN 933 M10X25 V2A |
| 50 | EL2001248 EL0742422 | Kit Heizung 1011 2011 400V 16,5kW (ET) Heizkörper 1011 16,5 KW 06 400 V Scheibenmutter M6 V2A Dichtung Heizkörper 1011 06 | Kit Heating Element 1011 2011 400V 10,5kW (ET) Heating Element 1011 16,5 KW 06 400 V Washer M6 V2A Gasket heating element 1011 06 |
| | EL2001344 | Kit Heizung 2011 21.6KW (ET) HEIZKOERPER D2K 2011 21.6KW UL Scheibenmutter M6 V2A Dichtung Heizkörper 1011 06 | Kit Heating Element 2011 21,6kW (ET) Heating Element 1011 21,6 KW UL Washer M6 V2A Gasket heating element 1011 06 |
| | EL2002025 | KIT HEIZUNG 1011 200-240V(ET) HEIZKOERPER 1011 21.6 KW 06 230V SCHEIBENMUTTER M6 V2A DICHTUNG HEIZKOERPER 1011 06 | KIT Heating Element 1011 200 - 240 V (ET) Heating Element 1011 21.6 KW 06 230V Washer M6 V2A Gasket heating element 1011 06 |
| 60 | EL0757993 | Gegenflansch | Counter flange |
| 70 | EL0747785 | Motor Isolierblech D2K 611/1011/2011 | Motor insulation sheet D2K 611/1011/2011 |
| 80 | EL0507813 | Verteilerhülse | Water distributor nozzle |
| 100 | EL0504602 | Sicherheitstemperaturbegrenzer | High limit switch |
| 110 | EL0252867 | Sechskantmutter M5 DIN 934 | Hex nut M5 DIN 934 |
| 120 | EL0304816 | Zahnscheibe J 5,3 DIN6797 | Washer J 5,3 DIN6797 |
| 130 | EL0287695 | Halter Sicherheitstemperaturbegrenzer | Holder high limit switch |
| 140 | EL0373079 | Zentrierbuchse STB | Center socket STL |
| 150 | EL0570621 | NiCrNi Fühler | Bake chamber temp sensor NiCrNi thermocouple |
| 160 | EL0276634 | Schlauchschelle 14-19 | Hose clamp 14-19 |
| 170 | EL0336211 | Tefloneinsatz NiCrNi Fühler | Teflon insert NiCrNi temperature sensor |
| 180 | EL0035637 | Sechskantmutter R1/4 SW 19x6 Messing | Hex nut brass R1/4 SW 19x6 |
| 190 | EL0885541 | Zahnscheibe I 14,5 DIN 6798 | Disc I 14,5 DIN 6798 |
| 200 | EL0582247 | Dichtung 13x19x1 DIN 7603 CU | Seal ring 13x19x1 DIN 7603 CU |
| 210 | EL0336394 | Schutzsieb NiCrNi Fühler | Protection NiCrNi temperatur sensor |
| 220 | EL0507814 | Wasserzulaufrohr Gas 6-2011 | Water inlet pipe gas 6-2011 |
| 230 | EL0752746 | Scheibenmutter M5 | Washer Nut M5 |
| 240 | EL0593303 | Silikonschlauch D9x3 transparent | Silicone hose D9x3 transparent |
| 250 | EL0276634 | Schlauchschelle 14-19 | Hose clamp 14-19 |
| 260 | ELE524001 | Abzieher Gebläserad | Extractor fan wheel |

Motor + Heizung Elektro 1221 2021 Serie/16 - Motor + Heating Elements Electric 1221 2021 series/16



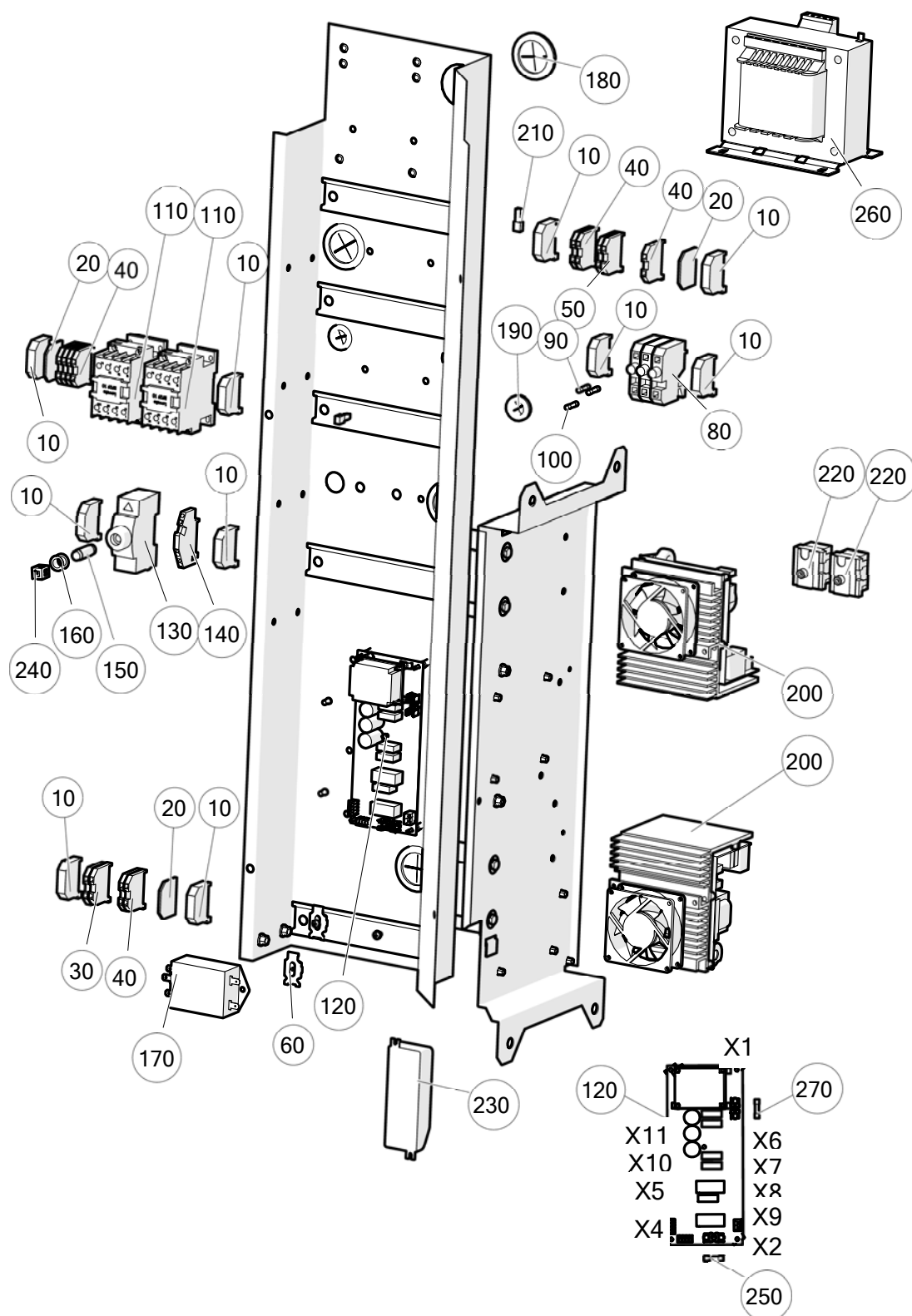
Motor und Heizung Elektro 1221 2021 Serie/16 - Motor and Heating Elements Electric 1221 2021 series/16

| | | | |
|-----|-----------|--|---|
| 10 | EL0776556 | Motor D2K 1221 2021 GAS UL 06 | Motor D2K 1221 2021 GAS UL 06 |
| | | Motor 12-21/20-21 für FU 17 | Motor 12-21/20-21 for FU 17 |
| 20 | EL0776521 | Lüfterrad D2K 06 GAS UL 122021 | Fan wheel D2K 06 GAS UL 1221 2021 |
| 30 | EL0586811 | Scheibenmutter M6 V2A | Washer nut M6 V2A |
| 40 | EL0788287 | Motorabstandsbuchse M8 12-20/21 GAS /Sonderspannung | Motor distance M8 socket 1221 2021 GAS / special Voltage |
| 50 | EL0570826 | Kupferdichtung 30-8X14X1/A | Copper gasket 30-8X14X1 / A |
| 60 | EL0352799 | Sechskantschraube DIN 933 M8X60 A2 | Hexagonal screw DIN 933 A2 M8X60 |
| 70 | EL0254177 | Mutter DIN 934 M8 V2A | Nut DIN 934 M8 V2A |
| 80 | EL0747815 | Motorisulationsblech 12-20/21 D2000 | Motor insulation sheet 12-20/21 D2000 |
| 90 | EL0399442 | Wellendichtring 17/16X41X3 | Shaft seal 17/16X41X3 |
| 100 | EL0751448 | Dichtungshalter 6-10/11 | Seal holder 6-10/11 |
| 110 | EL0873470 | Sechskantschraube DIN 933 M4X12 V2A | Hexagonal screw DIN 933 M4X12 V2A |
| 120 | EL0508397 | Verteilerhülse 12-21 20-21 1.4571 | Distributor sleeve 12-21 20-21 1.4571 |
| 130 | EL0749397 | Sechskantschraube DIN 933 M10X25 V2A | Hexagonal screw DIN 933 M10X25 V2A |
| 140 | EL0508876 | Keils. Scheibenpaar 10,7 A4 DIN 25201 | Pair of discs 10.7 A4 DIN 25201 |
| 150 | EL0504708 | Kühlrad mit Stift (ET) | Cooling wheel with set screw (ET) |
| 160 | EL0133957 | Gewindestift DIN 915 M5X6 ST BLANK | Grub screw DIN 915 M5x6 ST BLANK |
| 170 | EL0276634 | Schlauchschelle Spannbereich 14-19 | Hose clamp clamping range 14-19 |
| 180 | EL0252867 | Mutter DIN 934 M5 V2A | Nut DIN 934 M5 V2A |
| 190 | EL0082155 | Scheibe DIN 9021 5,3 V2A | Washer DIN 9021 5,3 V2A |
| 200 | EL0757993 | GEGENFLANSCH-HEIZKÖRPER | Counter flange heating element |
| 210 | EL0742430 | Heizkörper 32.4 KW 12/21 20/21 D2K 380 - 400V 3 N AC (3AC) | Heating Element 32.4 KW 1221 2021 D2K 380 - 400V 3 N AC (3AC) |
| | EL0758523 | HEIZKÖRPER 24.6 KW 1220/21 D2K Sonder 200-230 V 3AC | Heating Element 24,6 KW 1221 2021 D2K special voltage 200-230 V 3AC |
| 220 | EL0749451 | Dichtung Heizkörper D2K 10-2011/12-2021 | Gasket Heating Element D2K 10-2011/12-2021 |
| 230 | EL0593303 | Schlauch D9X3 Silikon Transparent 80 | Silicone Transparent Tube D9X3 80 |
| 240 | EL0508457 | Wasserzulaufrohr kompl. elektro 12/2021 | Water inlet pipe assy. electro 12/2021 |
| 250 | ELE524001 | Abzieher Gebläserad | Extractor fan wheel |
| 260 | EL0757993 | Gegenflansch Heizkörper | Counter Plate heating element |

Elektroblech GeniusMT 2011 Elektro Serie/16 - Electrical-Assy GeniusMT 2011 Electric Series/16

| | | | |
|-----|-----------|--|---|
| 10 | EL0337676 | Endklammer | End bracket |
| 20 | EL0570966 | Abschlussplatte f.Universalklemm 4mm | Final plate 4 sq mm |
| 30 | EL0594997 | Universalklemme 4qmm gruen-gelb | Terminal strip 4qmm green-yellow |
| 40 | EL0572055 | Universalklemme 4qmm grau | Terminal strip 4qmm gray |
| 50 | EL2571067 | Universalklemme 4qmm blau | Terminal strip 4qmm blue |
| 60 | EL0327514 | Abschlussplatte f.Sicherungsklemme | Final plate f.Sicherungsklemme |
| 80 | EL0326941 | Sicherungsklemme | Fuse terminal block |
| 90 | EL0578975 | Feinsicherung 10At | Fuse 10AT |
| 100 | EL0116831 | Feinsicherung 6,3 At | Fuse 6.3 At |
| 110 | EL2000766 | Hauptschuetz 45/36/32 A | Main Contacter 45/36/32 A |
| 120 | EL2000897 | Hilfskontakt seitlich Typ G418 10 | Auxiliary contact side type G418 10 |
| 130 | EL0751847 | Sicherungselement E0965 | Fuse element E0965 |
| 140 | EL0751898 | Anschlussklemme 35qmm 3x10qmm blau | Terminal 35qmm 3x10qmm blue |
| 150 | EL0751863 | Schmelzsicherung 35 A Neozet | Fuse 35 A Neozet |
| 160 | EL0751855 | Passeinsatz 35 A | Gauge ring 35 A |
| 170 | EL2000970 | Netzfilter FMBD 2011 1221 | Line filter FMBD 2011 1221 |
| 180 | EL0255351 | Membrantülle | Membrane grommet |
| 190 | EL0232963 | Membrantülle DG16 | Membrane grommet DG16 |
| 200 | EL0779393 | FREQUENZUMRICHTER MOTORSTEUERUNG | Frequency Converter Motor Control |
| | EL0505443 | FREQUENZUMRICHTER MOTORSTEUERUNG 480V | Frequency Converter Motor Control 480V |
| 210 | EL0303089 | Querbrückler 4qmm | Connector pin 4qmm |
| 220 | EL0504602 | STB 1-polig 360-18°C | Hi-Limit 1-pole 360-18 ° C |
| 230 | EL0502763 | Elektronischer Trafo 80 VA | Electronic Transformer 80 VA |
| 240 | EL0759988 | TRANSFORMATOR STU 500/2X115 UNIV.STEUERT | Transformer STU 500/2X115 universal control |
| 250 | EL2003169 | NETZFILTER FN3268-75-34 (3 POL. 200V) | LINE FILTER FN3268-75-34 (3 POL. 200V) |
| | EL2004089 | NETZFILTER FN3268-100-35 (3 POL.) | LINE FILTER FN3268-100-35 (3-POL.) |
| | EL2004090 | NETZFILTER FN3268-130-35 (3 POL.) | LINE FILTER FN3268-130-35 (3-POL.) |

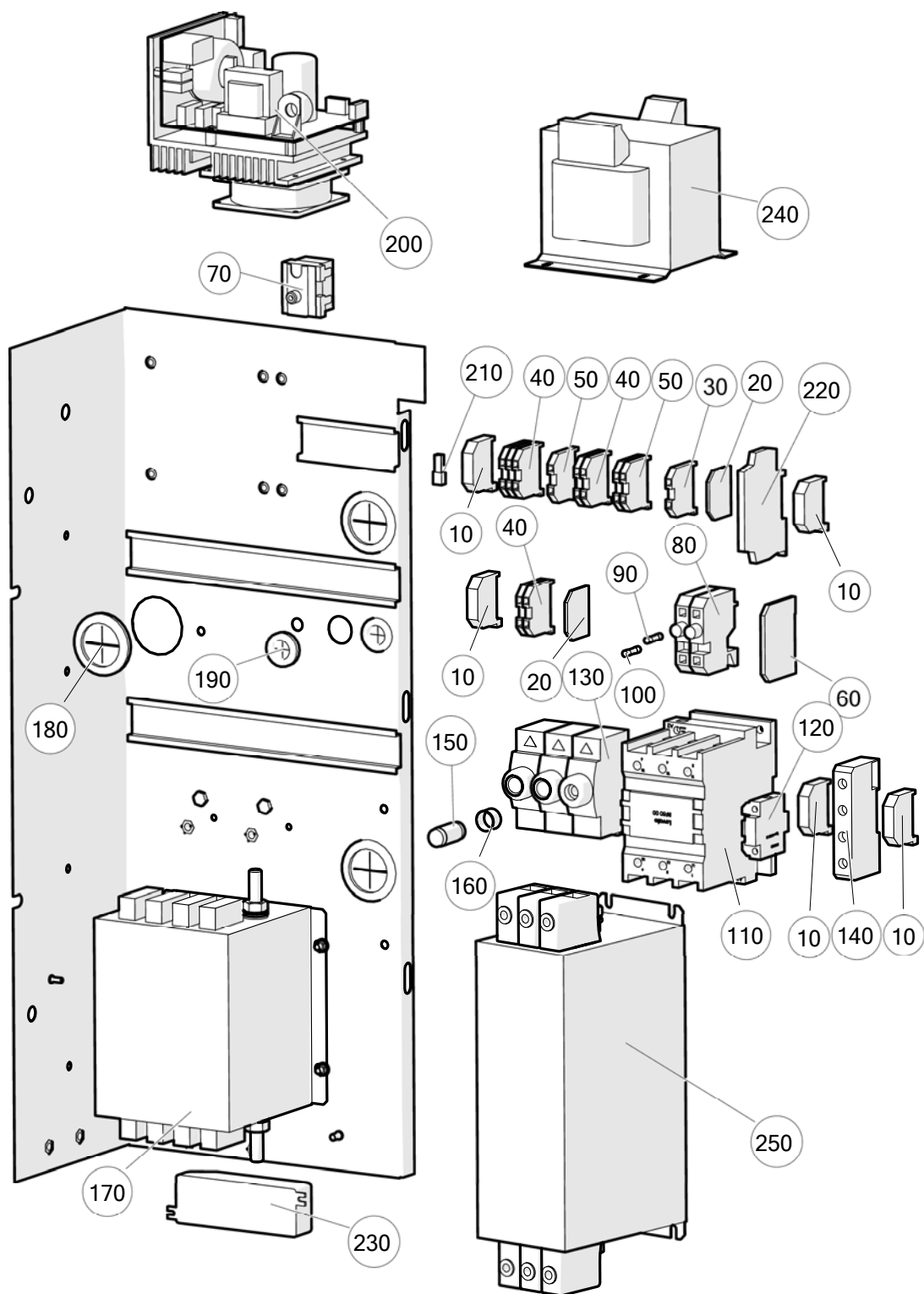
Elektroblech GeniusMT 2011 Gas Serie/16 - Electrical-Assy GeniusMT 2011 Gas Series/16



Elektroblech GeniusMT 2011 Gas Serie/16 - Electrical-Assy GeniusMT 2011 Gas Series/16

| | | | |
|-----|-----------|--|--|
| 10 | EL0337676 | Endklammer | End bracket |
| 20 | EL0570966 | Abschlussplatte f.Universalklemm 4mm | Final plate 4 sq mm |
| 30 | EL0594997 | Universalklemme 4qmm gruen-gelb | Terminal strip 4qmm green-yellow |
| 40 | EL0572055 | Universalklemme 4qmm grau | Terminal strip 4qmm gray |
| 50 | EL2571067 | Universalklemme 4qmm blau | Terminal strip 4qmm blue |
| 60 | EL0976504 | Montagefuss-AF1CG4 | Mounting Foot AF1CG4 |
| 80 | EL0326941 | Sicherungsklemme | Fuse terminal block |
| 90 | EL0578975 | Feinsicherung 10At | Fuse 10AT |
| 100 | EL0116831 | Feinsicherung 6,3 At | Fuse 6.3 At |
| 110 | EL2000765 | Hauptschuetz 25/20/18A | Main contacter 25/20/18A |
| 120 | EL2000917 | Zusatzplatine Gas | Gas control board |
| 130 | EL0751847 | Sicherungselement E0965 | Fuse element E0965 |
| 140 | EL0570818 | 3-Leiter Durchgangsklemme blau | 3-conductor through terminal block blue |
| 150 | EL0658294 | Sicherung 16A | Fuse 16A |
| 160 | EL0658308 | Passeinsatz 16 A | Gauge ring 16 A |
| 170 | EL0507455 | Netzfilter 1-phasig | Mains filter 1-phase |
| 180 | EL0255351 | Membrantuelle | Membrane grommet |
| 190 | EL0232963 | Membrantuelle DG16 | Membrane grommet DG16 |
| 200 | EL2002608 | BG FREQUENZUMRICHTER HAI KIT ET | Frequency Converter Hai Kit ET |
| 210 | EL0303089 | Querbrueckler 4qmm | Connector pin 4qmm |
| 220 | EL0504602 | STB 1-polig 360-18°C | Hi-Limit 1-pole 360-18 ° C |
| 230 | EL0502763 | Elektronischer Trafo 80 VA | Electronic Transformer 80 VA |
| 240 | EL0752185 | Haltefeder-Sicherungselement 16A | Retaining spring fuse element 16A |
| 250 | EL0510583 | Feinsicherung 4 A T | Fuse 4 A T delayed |
| 260 | EL0508669 | Transformator VT 100 EN 1000VA 4,0A | Transformator VT 100 EN 1000VA 4,0A |
| 270 | EL2002285 | Feinsicherung 2,5 A T | Fuse 2,5 A T delayed |
| | EL0759988 | TRANSFORMATOR STU 500/2X115 UNIV.STEUERT nur Japan | Transformer STU 500/2X115 universal control Japan only |

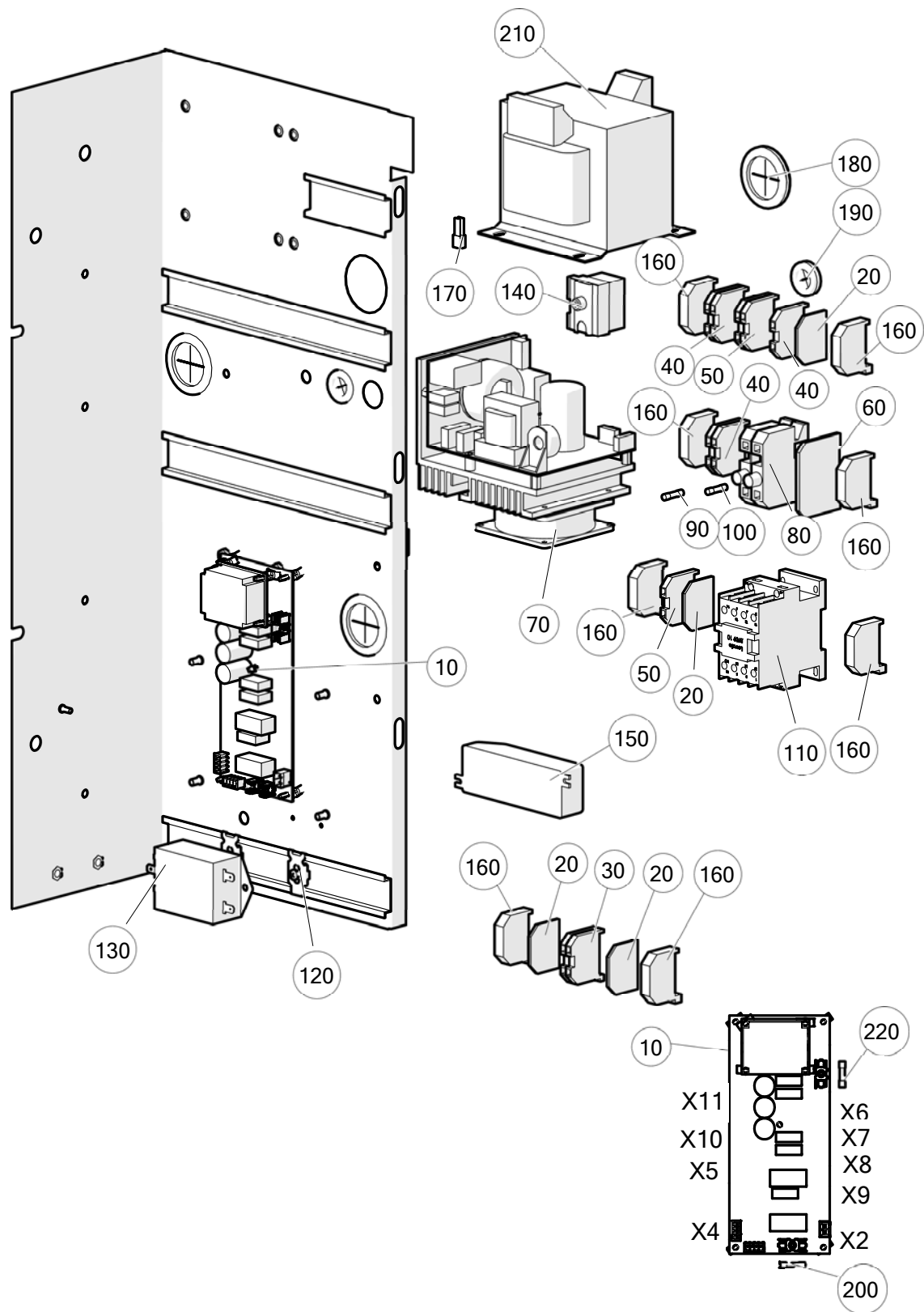
Elektroblech GeniusMT 1221 Elektro Serie/16 - Electrical-Assy 1221 Electric Series/16



Elektroblech GeniusMT 1221 Elektro Serie/16 - Electrical-Assy 1221 Electric Series/16

| | | | |
|-----|-----------|--|---|
| 10 | EL0337676 | Endklammer | End bracket |
| 20 | EL0570966 | Abschlussplatte f.Universalklemm 4mm | Final plate 4 sq mm |
| 30 | EL0594997 | Universalklemme 4qmm gruen-gelb | Terminal strip 4qmm green-yellow |
| 40 | EL0572055 | Universalklemme 4qmm grau | Terminal strip 4qmm gray |
| 50 | EL2571067 | Universalklemme 4qmm blau | Terminal strip 4qmm blue |
| 60 | EL0327514 | Abschlussplatte f.Sicherungsklemme | Final plate f.Sicherungsklemme |
| 70 | EL0504602 | STB 1-polig 360-18°C | Hi-Limit 1-pole 360-18 ° C |
| 80 | EL0326941 | Sicherungsklemme | Fuse terminal block |
| 90 | EL0578975 | Feinsicherung 10At | Fuse 10AT |
| 100 | EL0116831 | Feinsicherung 6,3 At | Fuse 6.3 At |
| 110 | EL2000837 | Hauptschuetz 90/80/65 A | Main Contacter 45/36/32 A |
| 120 | EL2000897 | Hilfskontakt seitlich Luvato Typ G418 10 | Auxiliary contact side type G418 10 |
| 130 | EL0751847 | Sicherungselement E0965 | Fuse element E0965 |
| 140 | EL0751898 | Anschlussklemme 35qmm 3x10qmm blau | Terminal block 35qmm 3x10qmm blue |
| 150 | EL0658286 | Sicherung 50A | Fuse 50 A Neozet |
| 160 | EL0658278 | Passeinsatz 50 A | Gauge ring 50 A |
| 170 | EL2000970 | Netzfilter FMBD | Line filter FMBD 2011 1221 |
| 180 | EL0255351 | Membrantuelle | Membrane grommet |
| 190 | EL0232963 | Membrantuelle DG16 | Membrane grommet DG16 |
| 200 | EL0779393 | FREQUENZUMRICHTER MOTORSTEUERUNG | Frequency Converter Motor Control |
| 210 | EL0303089 | Querbrueckler 4qmm | Connector pin 4qmm |
| 220 | EL0742813 | Hilfsrelais 230V | Auxiliary relay 230V |
| 230 | EL0502763 | Elektronischer Trafo 80 VA | Electronic Transformer 80 VA |
| 240 | EL0759988 | TRANSFORMATOR STU 500/2X115 UNIV.STEUERT | Transformer STU 500/2X115 universal control |
| 250 | EL2003169 | NETZFILTER FN3268-75-34 (3 POL 200V) | LINE FILTER FN3268-75-34 (3 POL 200V) |

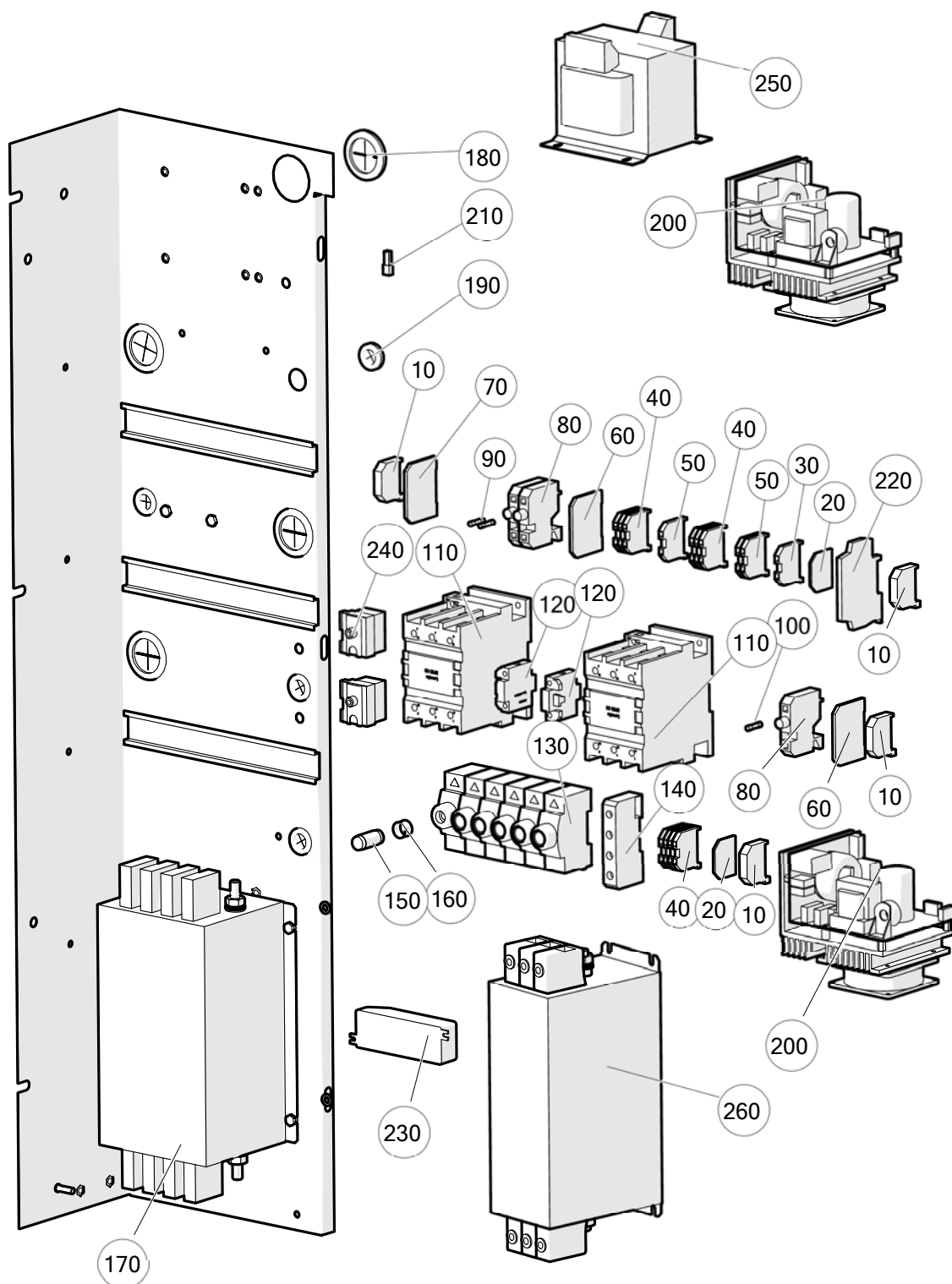
Elektroblech GeniusMT 1221 Gas Serie/16 - Electrical-Assy 1221 Gas Series/16



Elektroblech GeniusMT 1221 Gas Serie/14 - Electrical-Assy 1221 Gas Series/14

| | | | |
|-----|-----------|--|--|
| 10 | EL2000917 | Zusatzplatine Gas | Gas control board |
| 20 | EL0570966 | Abschlussplatte f.Universalklemm 4mm | Final plate 4 sq mm |
| 30 | EL0594997 | Universalklemme 4qmm gruen-gelb | Terminal strip 4qmm green-yellow |
| 40 | EL0572055 | Universalklemme 4qmm grau | Terminal strip 4qmm gray |
| 50 | EL2571067 | Universalklemme 4qmm blau | Terminal strip 4qmm blue |
| 60 | EL0327514 | Abschlussplatte f.Sicherungsklemme | Final plate terminal block |
| 70 | EL2002608 | BG FREQUENZUMRICHTER HAI KIT ET | Frequency Converter Hai Kit ET |
| 80 | EL0326941 | Sicherungsklemme | Fuse terminal block |
| 90 | EL0578975 | Feinsicherung 10At | Fuse 10AT |
| 100 | EL0116831 | Feinsicherung 6,3 At | Fuse 6.3 At |
| 110 | EL2000765 | Hauptschuetz 25/20/18 A | Main contacter 25/20/18A |
| 120 | EL0976504 | Montagefuss AF 1CG4 | Mounting Foot AF1CG4 |
| 130 | EL0507455 | Netzfilter 1-phasig | Mains filter 1-phase |
| 140 | EL0504602 | STB 1-polig 360°-18°C | Hi-Limit 1-pole 360-18 ° C |
| 150 | EL0502763 | Elektronischer Trafo 80 VA | Electronic Transformer 80 VA |
| 160 | EL0337676 | Endklammer | End bracket |
| 170 | EL0303089 | Querbrücker 4qmm | Connector pin 4qmm |
| 180 | EL0255351 | Membrantülle | Membrane grommet |
| 190 | EL0232963 | Membrantülle DG16 | Membrane grommet DG16 |
| 200 | EL0510583 | Feinsicherung 4 A T | Fuse 4 A T |
| 210 | EL0508669 | Transformator VT 100 EN 1000VA 4,0A | Transformator VT 100 EN 1000VA 4,0A |
| 220 | EL2002285 | Feinsicherung 2,5 A T | Fuse 2,5 A T delayed |
| | EL0759988 | TRANSFORMATOR STU 500/2X115 UNIV.STEUERT nur Japan | Transformer STU 500/2X115 universal control Japan only |

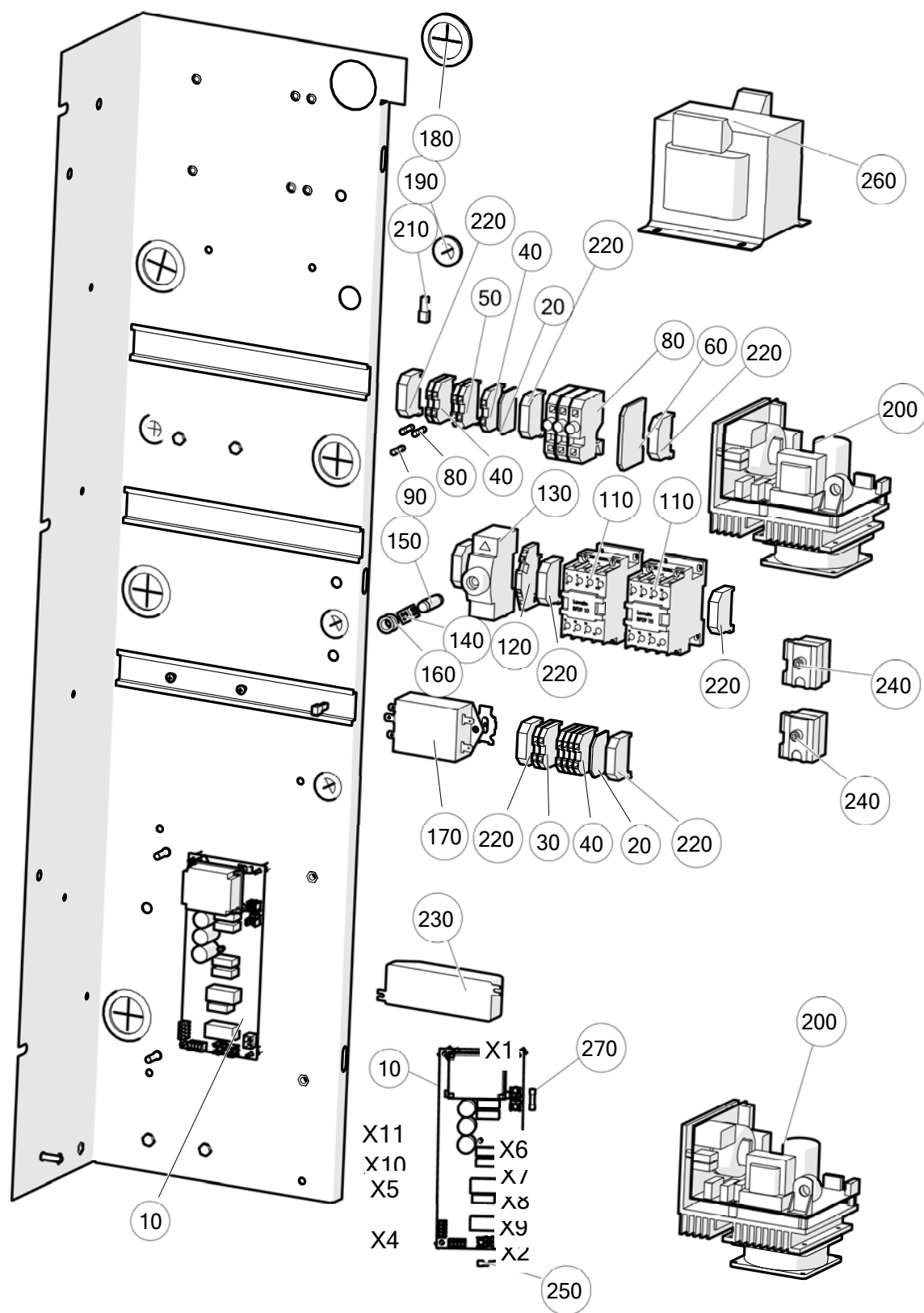
Elektroblech GeniusMT 2021 Elektro Serie/16 - Electrical-Assy GeniusMT 2021 Electric Series/16



Elektroblech GeniusMT 2021 Elektro Serie/16 - Electrical-Assy GeniusMT 2021 Electric Series/16

| | | | |
|-----|-----------|--|---|
| 10 | EL0337676 | Endklammer | End bracket |
| 20 | EL0570966 | Abschlussplatte f.Universalklemm 4mm | Final plate 4 sq mm |
| 30 | EL0594997 | Universalklemme 4qmm gruen-gelb | Terminal strip 4qmm green-yellow |
| 40 | EL0572055 | Universalklemme 4qmm grau | Terminal strip 4qmm gray |
| 50 | EL2571067 | Universalklemme 4qmm blau | Terminal strip 4qmm blue |
| 60 | EL0327514 | Abschlussplatte f.Sicherungsklemme | Final plate terminal strip |
| 80 | EL0326941 | Sicherungsklemme | Fuse terminal block |
| 90 | EL0578975 | Feinsicherung 10At | Fuse 10AT |
| 100 | EL0116831 | Feinsicherung 6,3 At | Fuse 6.3 At |
| 110 | EL2000837 | Hauptschuetz 90/80/65 A | Main Contacter 90/80/65 A |
| 120 | EL2000897 | Hilfskontakt seitlich Luvato Typ G418 10 | Auxiliary contact side type G418 10 |
| 130 | EL0751847 | Sicherungselement E0965 | Fuse element E0965 |
| 140 | EL0751898 | Anschlussklemme 35qmm 3x10qmm blau | Terminal 35qmm 3x10qmm blue |
| 150 | EL0658286 | Sicherung 50A | Fuse 50A |
| 160 | EL0658278 | Passeinsatz 50 A | Gauge ring 50A |
| 170 | EL2000957 | Netzfilter FMBD-B92 E-J2 12 2021 | Line filter FMBD-B92 E-J2 12 2021 |
| 180 | EL0255351 | Membrantuelle | Membrane grommet |
| 190 | EL0232963 | Membrantuelle DG16 | Membrane grommet DG16 |
| 200 | EL0779393 | FREQUENZUMRICHTER MOTORSTEUERUNG | Frequency Converter Motor Control |
| | EL0505443 | FREQUENZUMRICHTER MOTORSTEUERUNG 480V | Frequency Converter Motor Control 480V |
| 210 | EL0303089 | Querbrueckler 4qmm | Connector pin 4qmm |
| 220 | EL0742813 | Hilfsrelais 230V | Auxiliary relay 230V |
| 230 | EL0502763 | Elektronischer Trafo 80 VA | Electronic Transformer 80 VA |
| 240 | EL0504602 | STB 1-polig 360-18°C | Hi-Limit 1-pole 360-18 ° C |
| 250 | EL0759988 | TRANSFORMATOR STU 500/2X115 UNIV.STEUERT | Transformer STU 500/2X115 universal control |
| 260 | EL2004089 | NETZFILTER FN3268-100-35 (3-POL.) | LINE FILTER FN3268-100-35 (3-POL.) |
| | EL2004090 | NETZFILTER FN3268-130-35 (3-POL) | LINE FILTER FN3268-130-35 (3-POL) |
| | EL2003169 | NETZFILTER FN3268-75-34 (3 POL 200V) | LINE FILTER FN3268-75-34 (3 POL 200V) |

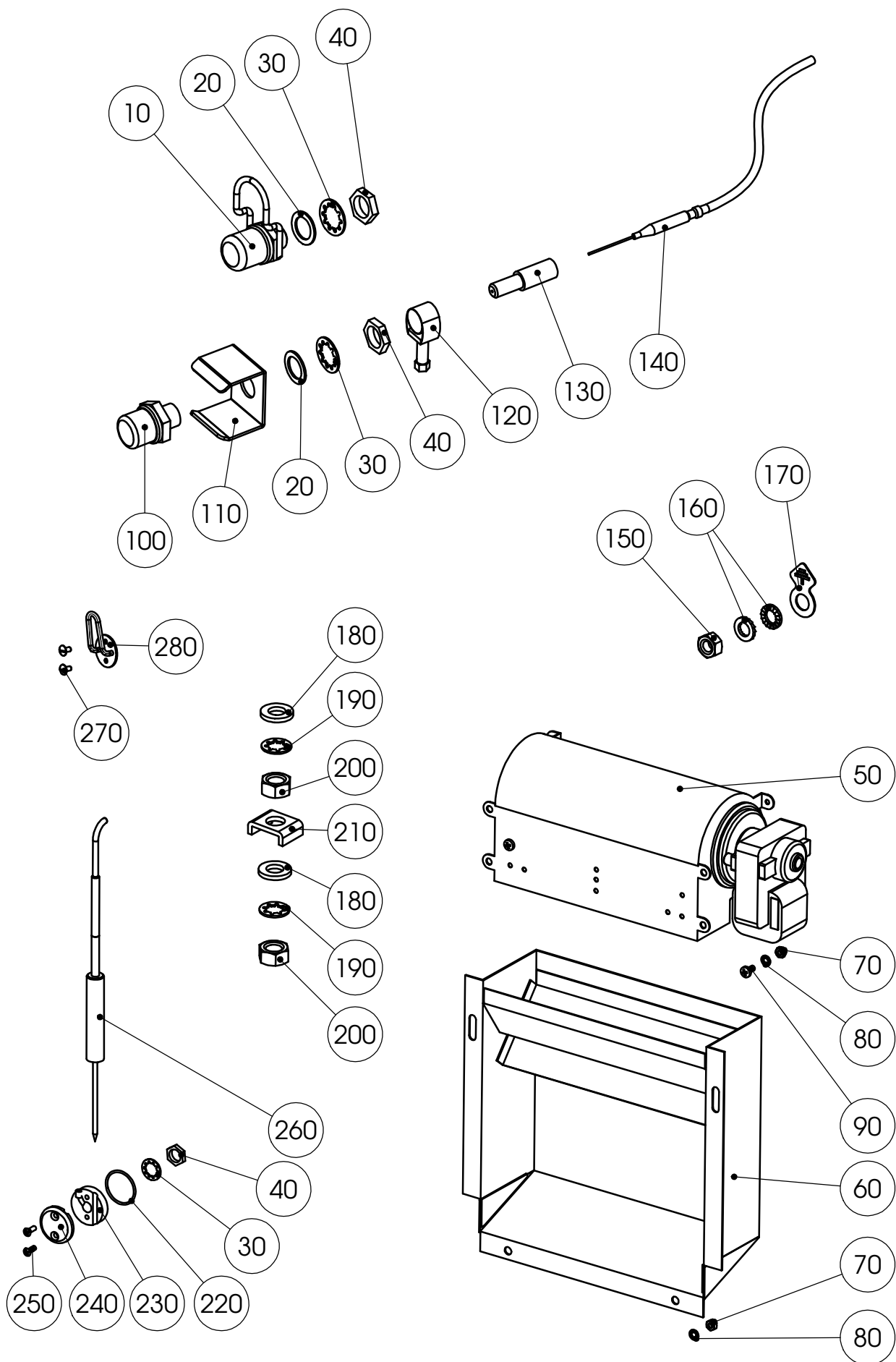
Elektroblech GeniusMT 2021 Gas Serie/16 - Electric Assy 2021 Gas Series/16



Elektroblech GeniusMT 2021 Gas Serie/16 - Electrical-Assy 2021 Electric Series/16

| | | | |
|-----|-----------|--|--|
| 10 | EL2000917 | Zusatzplatine Gas | Gas control board |
| 20 | EL0570966 | Abschlussplatte f.Universalklemm 4mm | Final plate 4 sq mm |
| 30 | EL0594997 | Universalklemme 4qmm gruen-gelb | Terminal strip 4qmm green-yellow |
| 40 | EL0572055 | Universalklemme 4qmm grau | Terminal strip 4qmm gray |
| 50 | EL2571067 | Universalklemme 4qmm blau | Terminal strip 4qmm blue |
| 60 | EL0327514 | Abschlussplatte f.Sicherungsklemme | Final plate terminal block |
| 80 | EL0326941 | Sicherungsklemme | Fuse terminal block |
| 90 | EL0578975 | Feinsicherung 10At | Fuse 10AT |
| 100 | EL0116831 | Feinsicherung 6,3 At | Fuse 6.3 At |
| 110 | EL2000765 | Hauptschuetz 25/20/18 A | Main contactor 25/20/18A |
| 120 | EL0570818 | Dreileiterdurchgangsklemme blau | Three-conductor terminal block blue |
| 130 | EL0751847 | Sicherungselement E0965 | Fuse element E0965 |
| 140 | EL0752185 | Haltefeder-Sicherungselement 16A | Retaining spring fuse element 16A |
| 150 | EL0658294 | Sicherung 16A | Fuse 16A |
| 160 | EL0658308 | Passeinsatz 16A | Gauge ring 16A |
| 170 | EL0507455 | Netzfilter 1-phasig | Mains filter 1-phase |
| 180 | EL0255351 | Membrantuelle | Membrane grommet |
| 190 | EL232963 | Membrantuelle DG16 | Membrane grommet DG16 |
| 200 | EL2002608 | BG FREQUENZUMRICHTER HAI KIT ET | Frequency Converter Hai Kit ET |
| 210 | EL0303089 | Querbrueckler 4qmm | Connector pin 4qmm |
| 220 | EL0337676 | Kunststoffwinkel 10mm breit | End bracket |
| 230 | EL0502763 | Elektronischer Trafo 80VA | Electronic Transformer 80 VA |
| 240 | EL0504602 | STB 1-polig 360-18°C | Hi-Limit 1-pole 360-18 ° C |
| 250 | EL0510583 | Feinsicherung 4 AT | Fuse 4 A T |
| 260 | EL0508669 | Transformator VT 100 EN 1000VA 4,0A | Transformator VT 100 EN 1000VA 4,0A |
| 270 | EL2002285 | Feinsicherung 2,5 A T | Fuse 2,5 A T delayed |
| | EL0759988 | TRANSFORMATOR STU 500/2X115 UNIV.STEUERT nur Japan | Transformer STU 500/2X115 universal control Japan only |

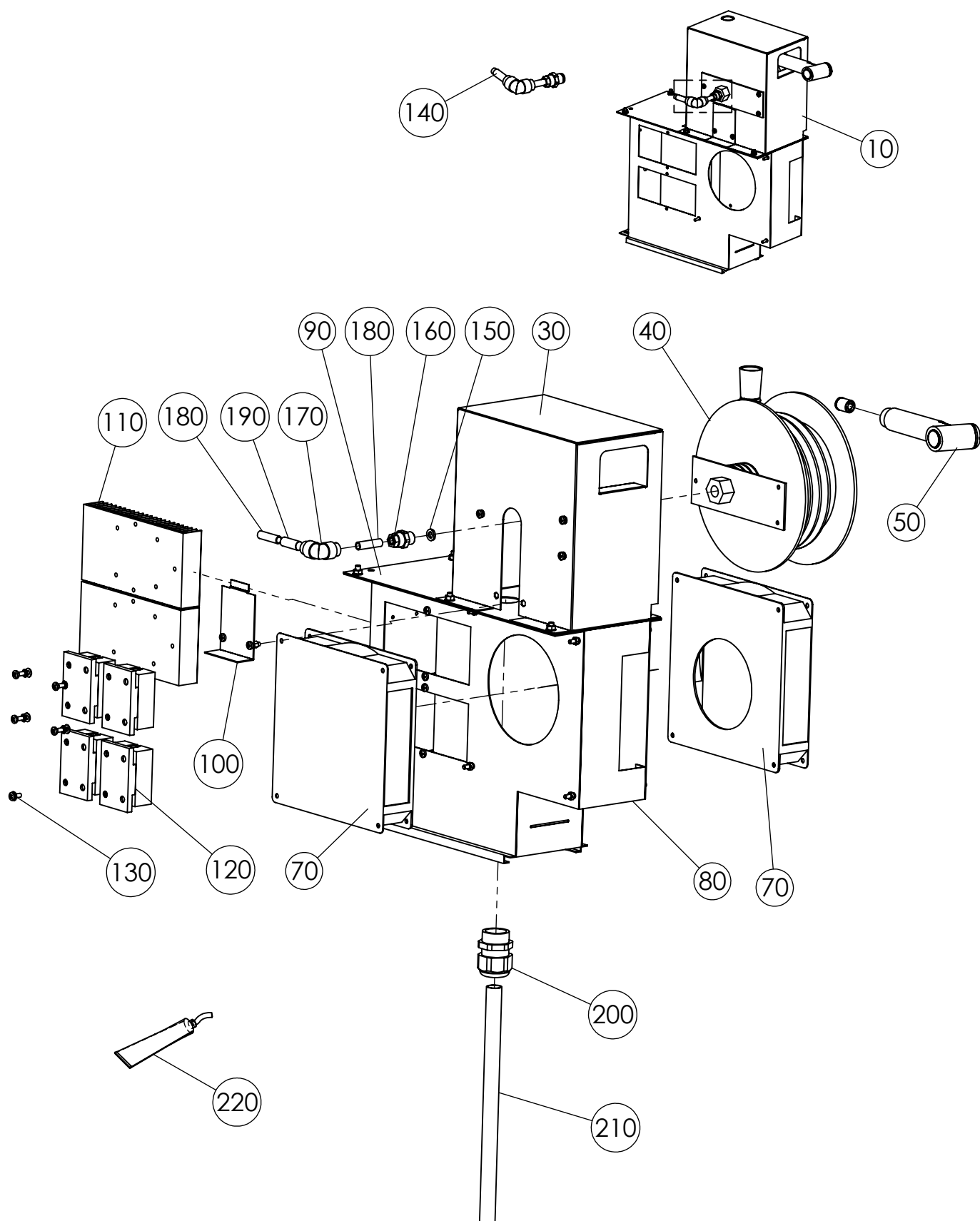
E-Teile lose 2011 1221 2021 - E-parts miscellaneous 2011 1221 2021



E-Teile lose 2011 1221 2021 - E-parts miscellaneous 2011 1221 2021

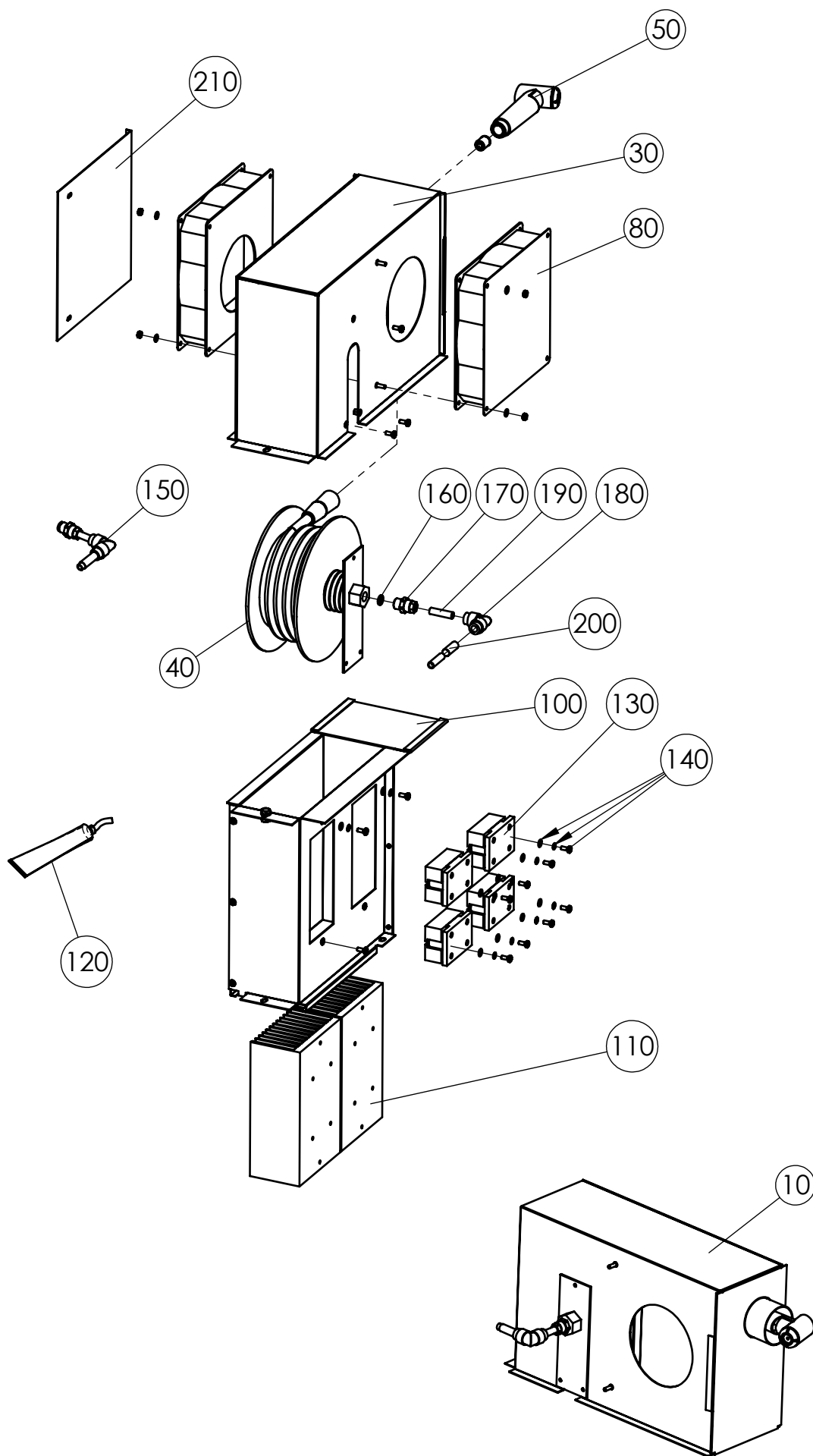
| | | | |
|-----|-----------|--------------------------------------|--|
| 10 | EL0745464 | Fühlerschutz mit Bügel D2K | Sensor protection with ironing D2K |
| 20 | EL0582247 | Dichtring 13X19X1 DIN7603 CU VERN. | Seal 13X19X1 DIN7603 CU VERN. |
| 30 | EL0758574 | Zahnscheibe DIN6797 J13.0 V2A (M12) | Tooth washer DIN6797 J13.0 V2A (M12) |
| 40 | EL0035637 | Mutter R1/4 SW19X6 MS.NI. | Nut R1 / 4 SW19X6 MS.NI. |
| 50 | EL0573469 | Querstromgebläse 180MM | Cross flow fan 180MM |
| 60 | EL0558427 | Motorschacht KPL. HLD 12/21 | Motor shaft KPL. HLD 12/21 |
| 70 | EL0003905 | Mutter M4 DIN934 V2A | M4 nut DIN934 V2A |
| 80 | EL0050849 | Zahnscheibe DIN 6797 J4,3 V2A | Lock washer DIN 6797 J4, 3 V2A |
| 90 | EL0001015 | Linsenschraube DIN 7985 M4X8 V2A | Oval head screw DIN 7985 M4x8 V2A |
| 100 | EL0336394 | Schutzsieb NiCrNi Fühler | Protective screen NiCrNi sensor |
| 110 | EL0658111 | Fühlerschutz Thermoelement | Probe protection thermocouple |
| 120 | EL0277665 | Schlauchschelle Spannbereich NS 9-14 | Hose clamp clamping range 9-14 NS |
| 130 | EL0336211 | Tefloneinsatz für NiCrNi Fühler | Teflon insert for NiCrNi sensor |
| 140 | EL0570621 | NiCrNi Fühler 90.166-F15-4ME | NiCrNi sensor 90 166-F15-4ME |
| 150 | EL0252867 | Mutter M5 DIN 934 V2A | M5 nut DIN 934 V2A |
| 160 | EL0507998 | Keils. Scheibenpaar 5,4 A4 DIN 25201 | Pair of disks 5.4 A4 DIN 25201 |
| 170 | EL0752541 | MS-Erdungszeichen M6 | MS-earth sign M6 |
| 180 | EL0004014 | Scheibe DIN 125 A6,4 V2A | Washer DIN 125 A6, 4 V2A |
| 190 | EL0892912 | ZahnscheibeE J6,4 DIN 6797 V2A | Tooth washer J6, 4 DIN 6797 V2A |
| 200 | EL0251887 | Mutter M6 DIN934 V2A | M6 nut DIN934 V2A |
| 210 | EL0223697 | Klemmbügel M6 MS-NI C12 DIN 46282 | Clamp M6 MS-NI C12 DIN 46282 |
| 220 | EL0743585 | O-Ring 29,87X1,78 Silikon D2K | O-ring 29,87 X1, 78 silicone D2K |
| 230 | EL0743356 | Halterung KT Fühler Teil 2 D2K | KT sensor bracket Part 2 D2K |
| 240 | EL0743348 | Halterung KT Fühler Teil 1 D2K | KT sensor bracket Part 1 D2K |
| 250 | EL0039411 | Linsensenkschraube DIN 966 M4x12 V2A | Countersunk head screw DIN 966 M4x12 V2A |
| 260 | EL0752363 | Kerntemperaturfühler D2K L=3500 MM | Meat probe D2K L = 3500 MM |
| 270 | EL0325316 | Becherschraube M4X8 V2A | Cup screw M4X8 V2A |
| 280 | EL0752630 | Haltebügel KT D2K | Retaining bracket meat probe D2K |

Schlauchaufroller 2011 - Hose Retractor 2011



Schlauchaufroller 2011 - Hose Retractor 2011

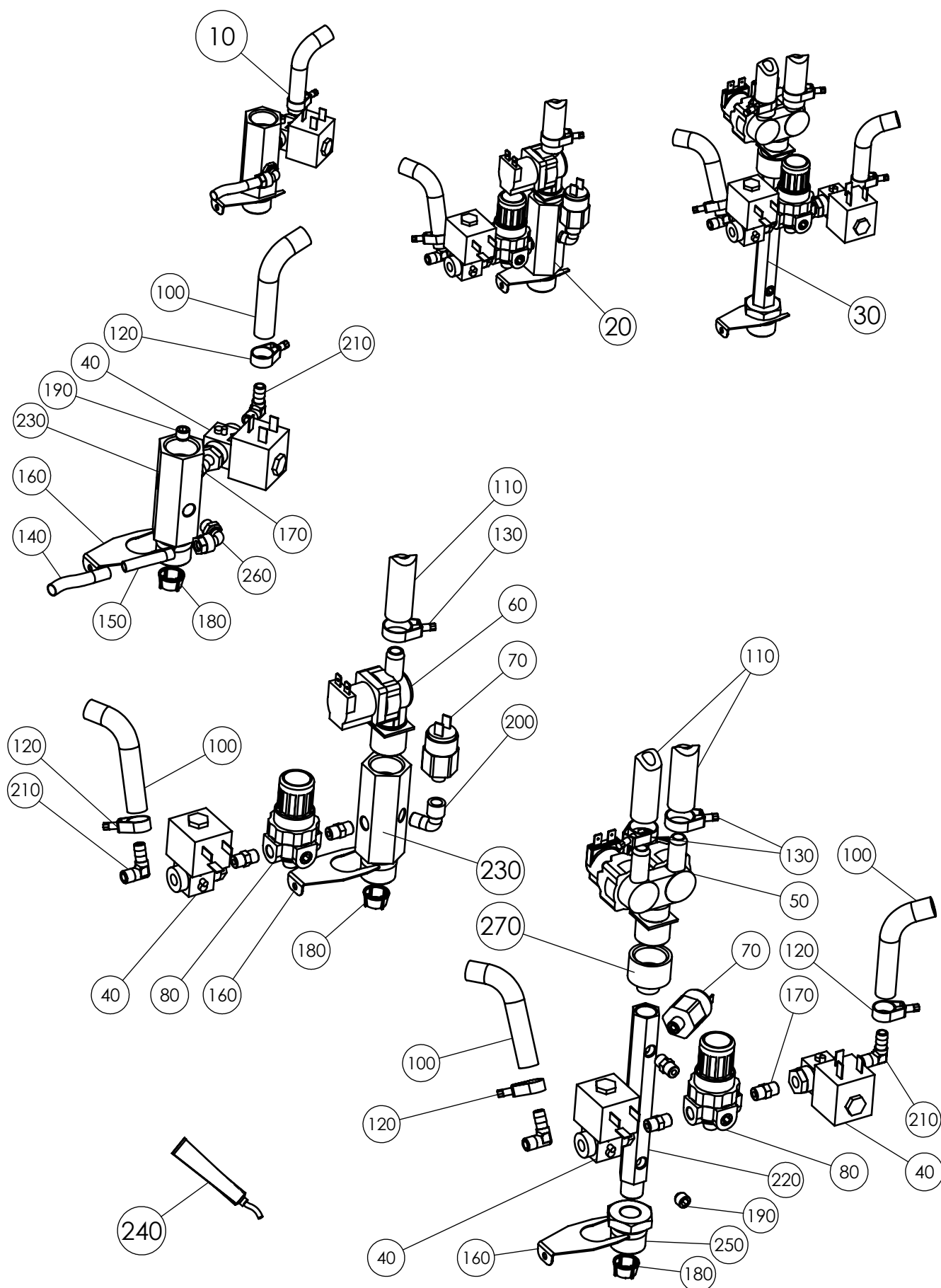
| | | | |
|-----|------------------|--|--|
| 10 | EL2000809 | BG Schlauchaufroller 20-11 | Assy Hose retractor compl. 2011 |
| 30 | EL2000727 | Brausekasten kpl. 2011 | Shower box compl. 2011 |
| 40 | EL2000715 | Schlauchbrause 20-11, 1220-21 | Shower hose 20-11, 1220-21 |
| 50 | EL0783404 | Brausekopf-rot-kpl. mit Rückschlagventil | Shower head-red-cpl. - integrated non return valve |
| 70 | EL0752525 | Axialgebläse | Axial fan |
| 80 | EL0755389 | Lueftungsschacht 20-11 | Ventilation shaft 2011 |
| 90 | EL0755451 | Abdeckblech 20-11 | Cover plate 20-11 |
| 100 | EL2000981 | Deckel Brausekasten | Cap shower box |
| 110 | EL0742732 | Kühlkörper 6-10-20-11 | Heatsink 611 1011 2011 |
| 120 | EL0752665 | Lastrelais und Abdeckung 90A | Solid State Relay and cover 90A |
| 130 | EL2001263 | Montagekit Lastrelais | Mounting kit SSR |
| | EL0553182 | Erdungszeichen M4 | Earth sign M4 |
| | EL0001007 | Scheibe DIN125 A4,3 | Washer DIN125 A4, 3 |
| | EL0050849 | Zahnscheibe DIN6797J4,3 | Toothed disc DIN6797J4, 3 |
| | EL0001015 | Linsenschraube DIN7985 M4x8 | Lens screw M4x8 DIN7985 |
| | EL0010502 | Linsenschraube DIN7985 M4x10 | Lens screw DIN7985 M4x10 |
| 140 | EL2000866 | UBG Verbindungsrohr | Connecting tube kit compl. |
| 150 | EL0509954 | Flachdichtung | Flat gasket |
| 160 | EL2000811 | Gerade Einschraubverschraubung G 1/4 | Straight male screw G 1/4 |
| 170 | EL2001267 | Winkel-Steckverbindung 955P3-8FF | Elbow type 955P3-8FF |
| 180 | EL0785857 | Kunststoffleitung Polyamid 11/12W PA 8/6 | Plastic pipe polyamide 11/12W PA 8/6 |
| 190 | EL0039691 | Isolierschlauch D9 Glasseide | Insulating glass silk D9 |
| 200 | EL0573019 | Verschraubung-Kabel-PG21 | Screw cable PG21 |
| 210 | EL0879142 | Ablaufrohr 20-11 | Drain pipe 20-11 |
| 220 | EL0872482 | Wärmeleitpaste | Thermal compound paste |



Schlauchaufroller 1221 2021 - Hose Retractor 1221 2021

| | | | |
|-----|------------------|--|--|
| 10 | EL2000863 | BG Schlauchaufroller 1220-21 | Hose retractor compl. 1220-21 |
| 30 | ELL2000721 | Brausekasten 1220-21 | Shower box 1220 1221 |
| 40 | EL2000715 | Schlauchbrause 20-11, 1220-21 | Shower hose 2011, 1220 1221 |
| 50 | EL0783404 | Brausekopf-rot-kpl. mit Rückschlagventil | Shower head-red-cpl. - integrated non return valve |
| 80 | EL0752525 | Axialgebläse | Axial fan |
| 100 | EL2000723 | Lüftungsschacht 12-21 | Ventilation shaft 1221 |
| | EL2000716 | Lüftungsschacht 20-21 | Ventilation shaft 2021 |
| 110 | EL2001059 | Kühlkörper 12-21 | Heatsink 1221 |
| 110 | EL0752657 | Kühlkörper 20-21 | Heatsink 2021 |
| 120 | EL0872482 | Wärmeleitpaste | Thermal Compound paste |
| 130 | EL0752665 | Lastrelais SSR 90A | SSR with cover 90A |
| 140 | EL2001263 | Montagekit Lastrelais | Mounting overload relay |
| | EL0553182 | Erdungszeichen M4 | Earth sign M4 |
| | EL0001007 | Scheibe DIN125 A4,3 | Washer DIN125 A4, 3 |
| | EL0050849 | Zahnscheibe DIN6797 J4,3 | Tooth washer DIN6797 J4, 3 |
| | EL0001015 | Linsenschraube DIN7985 M4x8 | Oval head screw M4x8 DIN7985 |
| | EL0010502 | Linsenschraube DIN7985 M4x10 | Oval head screw M4x10 DIN7985 |
| 150 | EL2000866 | UBG Verbindungsrohr | UBG connecting tube |
| 160 | EL0509954 | Flachdichtung | flat seal |
| 170 | EL2000811 | Gerade Einschraubverschraubung G 1/4 | Straight male G 1/4 |
| 180 | EL2001267 | Winkel-Steckverbindung 955P3-8FF | Angle type connector 955P3-8FF |
| 190 | EL0785857 | Kunststoffleitung Polyamid 11/12W PA 8/6 | Plastic pipe polyamide 11/12W PA 8/6 |
| 200 | EL0039691 | Isolierschlauch D9 Glasseide | Insulating glass silk D9 |
| 210 | EL0744875 | Abdeckblech | Cover plate |

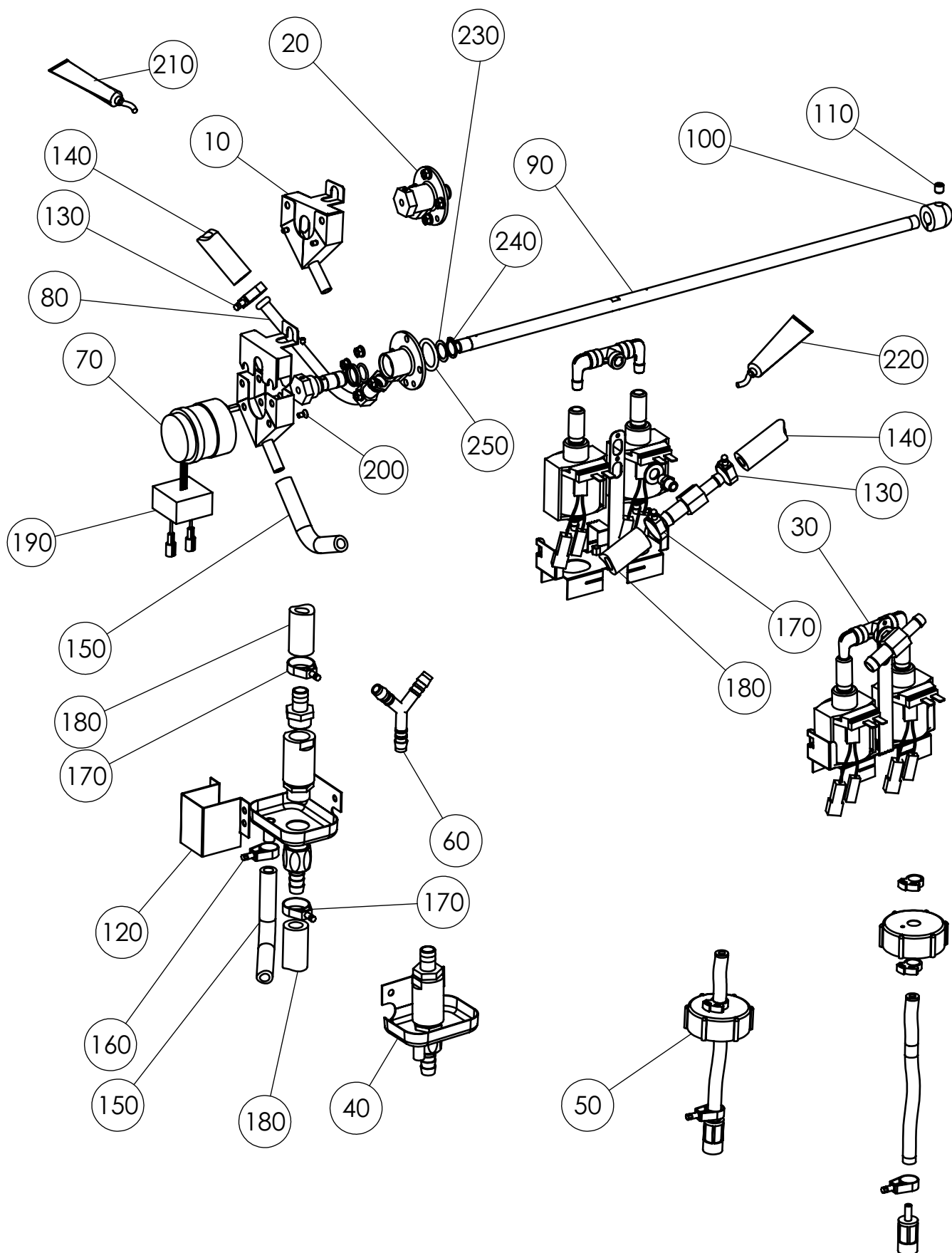
Ventile 2011 1221 2021 Serie/16 - Solenoid Valves 2011 1221 2021 series/16



Ventile 2011 1221 2021 Serie/16 - Solenoid Valve 2011 1221 2021 series/16

| | | | |
|-----|-----------|--|--|
| 10 | EL0508103 | Ventilstock Hartwasser MS SW 32 611 1011 2011 1221 | Valve Stock hard water MS SW 32 611 1011 2011 1221 |
| 20 | EL0508107 | Ventilstock Weichwasser M.AC MS 611 1011 1221 | Valve Stock soft water M.AC MS 611 1011 1221 |
| 30 | EL0502722 | Ventilstock Weichwasser AC DMZ 2011 2021 | Valve Stock soft water AC DMZ 2011 2021 |
| 40 | EL0374806 | Magnetventil 2/2 NW 2,6 | Solenoid valve 2/2 NW 2.6 |
| 50 | EL0754471 | Magnetventil Autoclean doppelt | Solenoid valve Autoclean double |
| 60 | EL0754463 | Magnetventil Autoclean einfach | Solenoid valve Autoclean single |
| 70 | EL0784028 | Druckschalter | Pressure switch |
| 80 | EL0871419 | Druckminderer | Pressure reducer |
| 100 | EL0593303 | Schlauch D9X3 Silikon transp. 80 | Tube transp D9X3 silicone. 80 |
| 110 | EL0753734 | Schlauch Dampfschlauch 10X5 EPDM blau | Hose Steam Hose 10X5 blue EPDM |
| 120 | EL0276634 | Schlauchselle Spannbereich 14-19 | Hose clamp clamping range 14-19 |
| 130 | EL0572160 | Schlauchbinder NS 22 | Hose clamp NS 22 |
| 140 | EL0039691 | Isolierschlauch D 9 Glasseide | Insulating D 9 glass silk |
| 150 | EL0785857 | Kunststoffleitung polyamid 11/12W PA 8/6 | Plastic pipe polyamide 11/12W PA 8/6 |
| 160 | EL0889520 | Federklemme Wassereinheit | Spring terminal of water unit |
| 170 | EL0754447 | Doppelnippel G 1/8 | Nipple G 1/8 |
| 180 | EL0249688 | Sieb D=19,7 weiss Magnetventil | Sieve D = 19.7 white solenoid valve |
| 190 | EL0399280 | Verschlusschraube | Plug screw |
| 200 | EL0773719 | Winkelstück G 1/8 | Angle G1 / 8 |
| 210 | EL0582166 | Winkeleinschraubtülle E G1/8A,Schlauch D9 | Angle screw grommet G1/8A, hose D9 |
| 220 | EL0506335 | Standrohr Messing | Standpipe brass |
| 230 | EL0889555 | Standrohr Messing SW32 | Standpipe brass SW32 |
| 240 | EL0593567 | Loctite 511 50ml | Loctite 511 50ml |
| 250 | EL0769975 | Reduzierung 3/8" - 3/4" | Reduction 3/8 "- 3/4" |
| 260 | EL0747580 | Winkelverschraubung 1/8" drehbar | Angle screw 1/8" rotatable |
| 270 | EL0754943 | REDUZIERSTUECK 3/8" AG x 3/4" IG Rotguss | Reducer 3/8 "x 3/4" gunmetal |

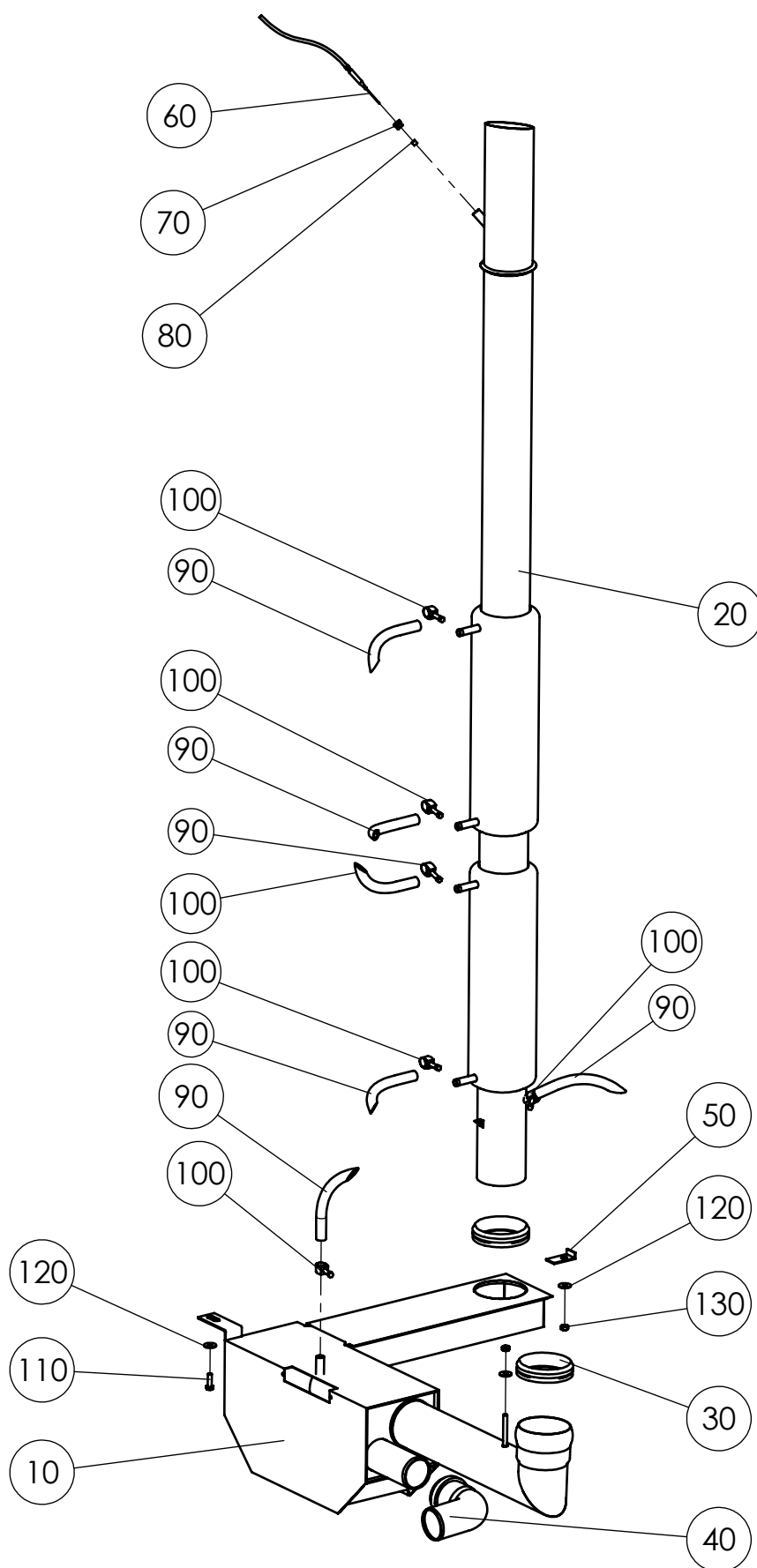
Autoclean 2011 1221 2021 Serie/16 - Autoclean 2011 1221 2021 Series/16



Autoclean 2011 1221 2021 Serie/16 - Autoclean 2011 1221 2021 Series/16

| | | | |
|-----|--|---|---|
| 10 | EL0783749 <i>EL2001725</i> <i>EL0783773</i> <i>EL0783781</i> | UBG Einhausung Autoclean <i>Fangbehälter Autoclean</i> <i>AUSSENDECKEL</i> <i>INNENDECKEL</i> | Support Assy Autoclean <i>Drip catch Autoclean</i> <i>Lid outside</i> <i>Lid inside</i> |
| 20 | EL0775177 | VBG Achse-Nabe Autoclean | Kit Axle-hub-Autoclean |
| 30 | EL0508269 <i>EL0508265</i> <i>EL0508163</i> <i>EL0012602</i> <i>EL0508164</i> <i>EL0753890</i> <i>EL0503313</i> | VBG Schwingkolbenpumpe AC Hohe Ausführung <i>Haltewinkel kompl. hoch VBG Schwingkolbenp.</i> <i>Anschlußgruppe VA UBG AC Pumpen</i> <i>Scheibe DIN 125A10,5 V2A</i> <i>Doppelnippel V2A R1/8"</i> <i>Y Verbindungsstück AC</i> <i>Schwingkolbenpumpe 208-230V</i> | VBG piston pump AC High version <i>Bracket assy. high VBG piston pump</i> <i>Terminal group VA UBG AC pumps</i> <i>Washer DIN 125A10, 5 V2A</i> <i>V2A double nipple 1/8 "</i> <i>Y connector AC</i> <i>Piston pump 208-230V</i> |
| 40 | EL0753408 <i>EL0753432</i> <i>EL0509017</i> <i>EL0753424</i> <i>EL0778095</i> | UBG Sicherungskombi Autoclean <i>Schlauchtülle 12MM - X 1/2</i> <i>Rohrbelüfter RV DN 15 G 1/2 IG/AG</i> <i>Auffangwanne KPL AC</i> <i>Schlauchtülle 1/2 - 1/2</i> | UBG backup Combined Auto Clean <i>Hose 12MM - X 1/2</i> <i>RV admittance valves DN 15 G 1/2</i> <i>Drip pan KPL AC</i> <i>Hose 1/2 - 1/2</i> |
| 50 | EL0756296 | UBG Kanisteranschluss D2K | Kit canister connect D2K - chemical hoses |
| 60 | EL0756024 | Y-Verbindungsstück Autoclean 10mm | Y-connector 10mm Auto Clean |
| 70 | EL2000624 <i>EL2001631</i> <i>EL0753823</i> <i>EL0254657</i> <i>EL0518689</i> <i>EL0582670</i> <i>EL0518719</i> <i>EL0510606</i> <i>EL0508672</i> | BG Motor AC 61011 013 <i>Getriebemotor Autoclean</i> <i>Kondensator 0.27 mikroF 400VAC</i> <i>Isolierhülse E 6.3 x 0.8mm PA6.6 natur</i> <i>Isolationstülle 6.3 FUER Flachstecker</i> <i>Flachsteckhülse 6,3x0,8/1-2,5mm²(Rolle)</i> <i>Flachstecker MS VERZ.6,3MM 0,5-1,0QMM</i> <i>Flachstecker MS VERZ.6,3MM 1,5-2,5QMM</i> <i>Kabelbaum Entstörkondensator</i> | Motor Autoclean Kit <i>Gear motor Autoclean</i> <i>Capacitor 0.27 mikroF 400VAC</i> <i>Insulating sleeve E 6.3 x 0.8mm PA6.6 natur</i> <i>Isolation pipe 6.3 for flat connector</i> <i>Flat plug sleeve 6,3x0,8/1-2,5mm²(Rolle)</i> <i>Flat connector MS VERZ.6,3MM 0,5-1,0QMM</i> <i>Flat connector MS VERZ.6,3MM 1,5-2,5QMM</i> <i>Harness suppression capacitor</i> |
| 80 | EL0509868 | Wasserzulaufrohr Autoclean kpl.12-2021 2011 | Water inlet pipe autoclean cpl. 12-2021 2011 |
| 90 | EL0755893 | Düsenrohr 1221 2021 Autoclean D2K | Nozzle tube 1221 2021 Autoclean D2K |
| | EL0753793 | Düsenrohr 2011 Autoclean D2K | Nozzle tube 2011 Autoclean D2K |
| 100 | EL0772690 | Hauptdüse Autoclean 20-12/21 | Main Jet Autoclean 20-12/21 |
| | EL0753777 | Hauptdüse Autoclean 611 1011 2011 | Main Jet Autoclean 611 1011 2011 |
| 110 | EL0753785 | Gewindestift M8x8 DIN913 | Allen screw M8x8 DIN913 - head autoclean |
| 120 | EL0753440 | Spritzschutz Autoclean | Splash Auto Clean |
| 130 | EL0572160 | Schlauchbinder NS 22 | Hose clamp NS 22 |
| 140 | EL0753734 | Schlauch Dampfschlauch 10X5 EPDM blau | Hose Steam Hose 10X5 blue EPDM |
| 150 | EL0593303 | Schlauch D9X3 Silikon Transp. 80 shore | Hose D9X3 silicone transp. 80 SHORE |
| 160 | EL0276634 | Schlauchschele Spannbereich 14-19 | Hose clamp clamping range 14-19 |
| 170 | EL0756040 | Schlauchbinder NS 25 | Hose clamp NS 25 |
| 180 | EL0753661 | Schlauch Dampfschlauch 13X5 EPDM blau | Hose Steam Hose 13x5 blue EPDM |
| 190 | EL0753823 | Kondensator-0-27-MICROF-400-VAC | Capacitor-0-27-microf-400-VAC |
| 200 | EL0014249 | Linsenschraube M4X8 | Oval head screw M4X8 |
| 210 | EL0872849 | Silikonkleber Novasil S25 Kartusche 80ml | Silicone adhesive Novasil S25 cartridge 80ml |
| 220 | EL0371327 | Loctite 542 Gewindedichtung | Loctite 542 Thread Sealant |
| 230 | EL0584339 | PASSSCHEIBE DIN 988 14X20X0,5 V2A | FITTING COVER DIN 988 14X20X0,5 V2A |
| 240 | EL0581011 | SICHERUNGSRING DIN 471 14X1 1.4122 | SAFETY RING DIN 471 14X1 1.4122 |
| 250 | EL0753742 | O-RING 23,4 X 3,53 VITON | O-RING 23.4 X 3.53 VITON |

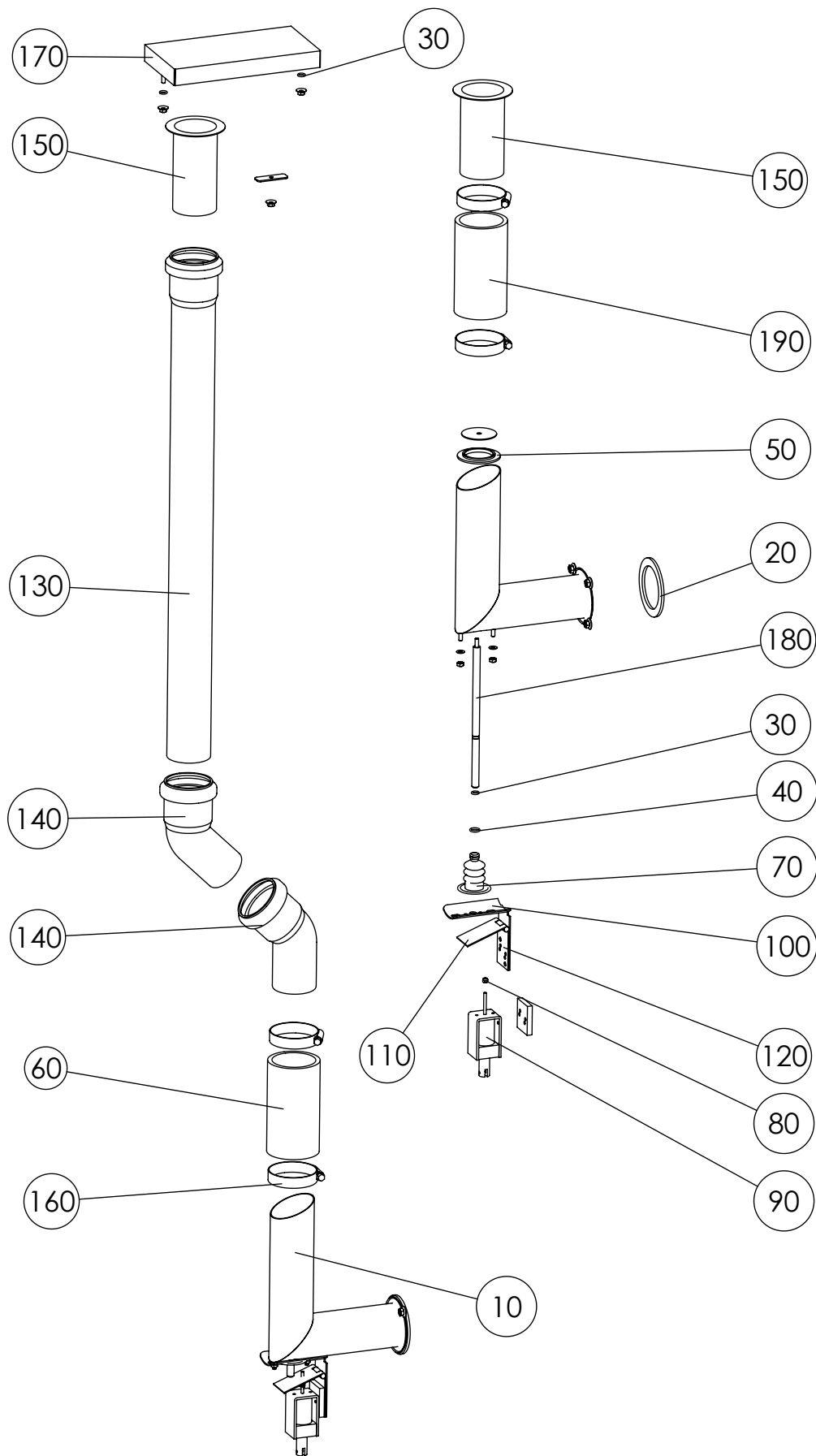
Ablauf und Abluftrohr 2011 1221 2021 - Drain and Exhaust Air Pipe 2011 1221 2021



Ablauf und Abluftrohr 2011 1221 2021 - Drain and Exhaust Air Pipe 2011 1221 2021

| | | | |
|-----|-----------|---------------------------------------|--|
| 10 | EL0743496 | Siphon kpl. D2k 1221 2021 | Siphon cpl. D2k 1221 2021 |
| | EL0745782 | Siphon kpl. D2k 2011 | Siphon cpl. D2k 2011 |
| 20 | EL0747327 | Wärmetauscher kpl. D2K 1221 | Heat exchanger compl. D2K 1221 |
| | EL0745979 | Wärmetauscher kpl. D2K 2011 2021 | Heat exchanger compl.. D2K 2011 2021 |
| | EL0771228 | Wärmetauscher kpl.. D2K 1221 GAS | Heat exchanger compl.. D2K 1221 GAS |
| | EL0771260 | Wärmetauscher kpl.. D2K 2011 2021 GAS | Heat exchanger compl.. D2K 2011 2021 GAS |
| 30 | EL0558125 | Dichtelement Silikon DN73 | Gasket silicone DN73 |
| 40 | EL0581763 | HT-Bogen 87°DN50 DIN19560 | HT angle 87 ° DIN19560 DN50 |
| 50 | EL0578274 | Andruckwinkel Siphon D2K | Pressure angle siphon D2K |
| 60 | EL0570621 | NiCrNi Fühler | NiCrNi sensor |
| 70 | EL0759864 | Stopfbuchsennippel | Jacks fitting |
| 80 | EL0268666 | Dichtung | Gasket |
| 90 | EL0593303 | Silikonschlauch 9x3 | Silicone hose 9x3 |
| 100 | EL0276634 | Schlauchschele 14-19 | Hose clamp 14-19 |
| 110 | EL0273651 | Sechskantschraube M6x20 | Hexagon bolt M6x20 |
| 120 | EL0000582 | Scheibe 6,4 DIN 9021 | Washer 6,4 DIN 9021 |
| 130 | EL0251887 | Mutter M6 DIN 934 V2A | M6 nut DIN 934 V2A |

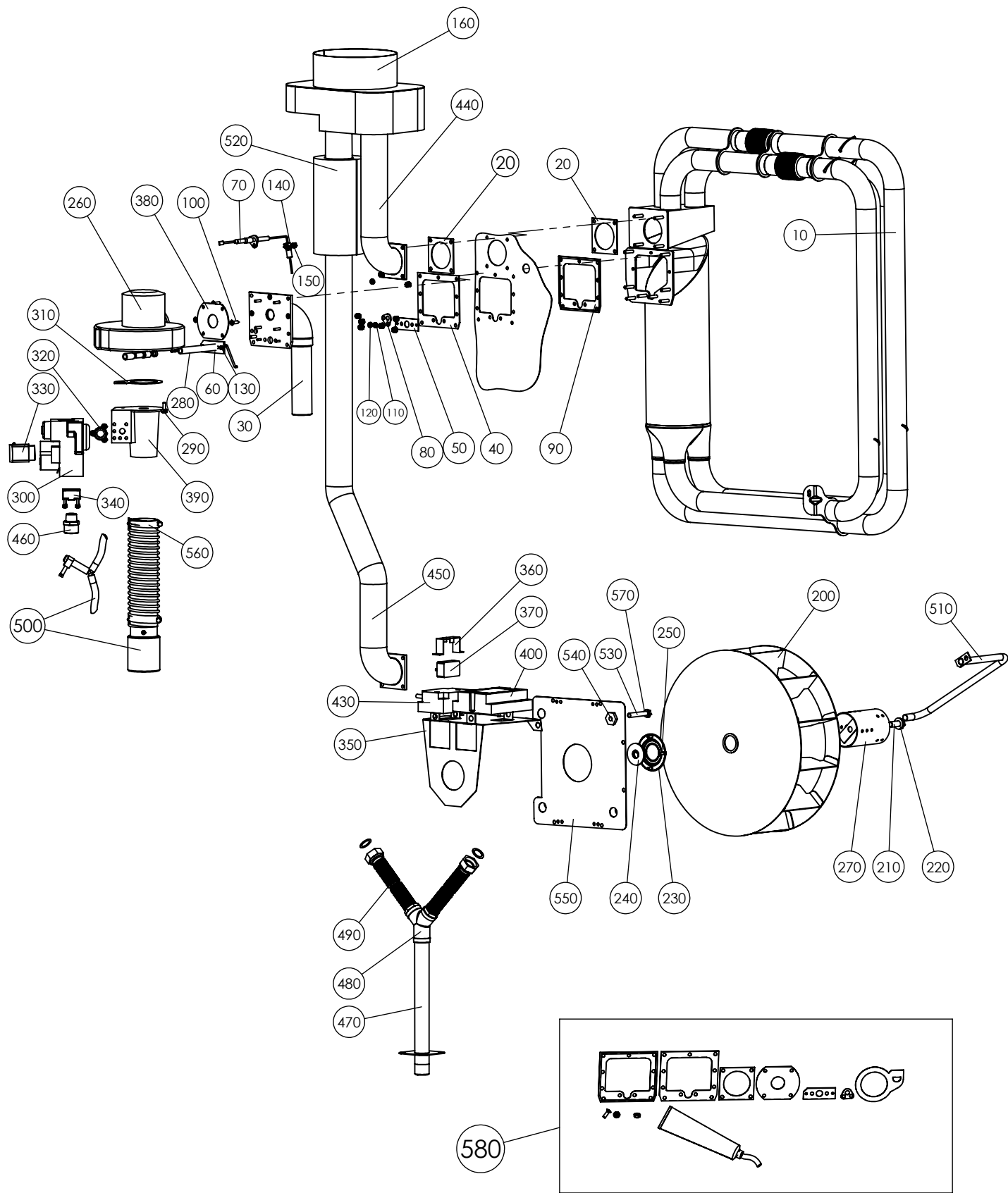
Zuluft 2011 1221 2021 - Air Supply 2011 1221 2021



Zuluft 2011 1221 2021 - Air Supply 2011 1221 2021

| | | | |
|-----|--|--|---|
| 10 | EL2000795 <i>EL0001007</i> <i>EL0003905</i> <i>EL0509191</i> <i>EL2000784</i> <i>EL0566594</i> <i>EL0575933</i> <i>EL0578886</i> <i>EL0579173</i> <i>EL0585319</i> <i>EL0776076</i> <i>EL0013455</i> <i>EL0752975</i> <i>EL0580627</i> <i>EL2000896</i> | UBG ZULUFTROHR <i>Scheibe DIN 125 A4,3 V2A</i> <i>Mutter DIN 934 M4 V2A</i> <i>Formdichtung Zuluftrohr D2K</i> <i>Hubmagnet Bistabil Kuhnke</i> <i>Faltenbalg Zuluftrohr D2K</i> <i>Zuluftrohr KPL. D2K</i> <i>Klappe Zuluftrohr D2K</i> <i>Hubstange Zuluft D2K</i> <i>Hubstangenführung EB40/60/100 6/10-11</i> <i>Hebel Hubmagnet</i> <i>O-Ring 3,68X1,78</i> <i>UBG Montage Hubmagnet D2K</i> <i>O-Ring 6,75X1,78 VITON 580 / FKM 80</i> <i>Distanzplatte Hubmagnet</i> | Kit supply duct <i>Washer DIN 125 A4, 3 V2A</i> <i>Nut DIN 934 M4 V2A</i> <i>Molded seal air supply pipe D2K</i> <i>Bistable solenoid Kuhnke</i> <i>Bellows supply duct D2K</i> <i>Supply duct KPL. D2K</i> <i>Supply air duct flap D2K</i> <i>Lift Rod Supply D2K</i> <i>Bar guide EB40/60/100 6/10-11</i> <i>Lever solenoid</i> <i>O-ring 3,68 X1, 78</i> <i>UBG mounting solenoid D2K</i> <i>O-ring 6,75 X1, 78 580 VITON / FKM 80</i> <i>Spacer plate lifting magnet</i> |
| 20 | EL0757071 | Dichtungsring D68xD50x3 | Seal ring D68xD50x3 |
| 30 | EL0013455 | O-Ring 3,68x1,78 | O-ring 3,68 x1, 78 |
| 40 | EL0580627 | O-Ring 6,75x1,78 Viton 580/FKM 80 | O-ring 6,75 x1, 78 Viton 580/FKM 80 |
| 50 | EL0509191 | Formdichtung Zuluftrohr | Molded seal air supply pipe |
| 60 | EL0580430 | SILIKONMANSCHETTE D50X5 L=110 | Silicone sleeve D50x5 L=110 |
| | EL0753017 | Silikonmanschette D50x5 L=150 1011 2011 | Silicone sleeve D50x5 L=150 - 1011 2011 |
| | EL0753084 | Silikonmanschette D50x5 L=165 1221 2011 | Silicone sleeve D50x5 L=165 - 1221 2011 |
| 70 | EL0566594 | Faltenbalg Zuluftrohr | Bellows supply duct |
| 80 | EL0749842 | Sechskantmutter M3 DIN 934 | Hexagon nut DIN 934 M3 |
| 90 | EL2000784 | Hubmagnet Bistabil Kuhnke | Bistable solenoid Kuhnke |
| 100 | EL0585319 | Hubstangenführung | Bar guide EB40/60/100 6/10-11 |
| 110 | EL0776076 | Tischband 100X32X1.2 1.4301 | Extra Plate 100X32X1.2 1.4301 |
| 120 | EL2000896 | Distanzplatte Hubmagnet | Spacer plate lifting magnet |
| 130 | EL0875694 | HT-Rohr 50X1000LG | HT pipe 50X1000LG |
| 140 | EL0875678 | HT-Rohr-Winkel 50X45Grad | HT-tube angle 50X45Grad |
| 150 | EL0575941 | Zuluftstutzen 611 2011 2021 | Air inlet 611 2011 2021 |
| | EL0575852 | Zuluftstutzen 1011 1221 | Air inlet 1011 1221 |
| 160 | EL0580791 | Schlauchschele ø40-ø60 | Hose clamp ø40 ø60- |
| 170 | EL0575895 | Kappe Abdeckung D2K 61011 | Cap cover D2K 61011 |
| | EL0751987 | Kappe Zuluft D2K 2021 2011 | Supply air cap 2021 2011 |
| 180 | EL0579173 | HUBSTANGE ZULUFT D2K | Lifting Rod intake D2K |
| 190 | EL0753084 | Silikonmanschette D50x5 L=200 2011 | Silicone sleeve D50x5 L=200 -2011 |
| | EL2002128 | Silikonmansch D50x5 L=250(ET) 1221/2021 | Silicone sleeve D50x5 L=250 -1221/2021 |

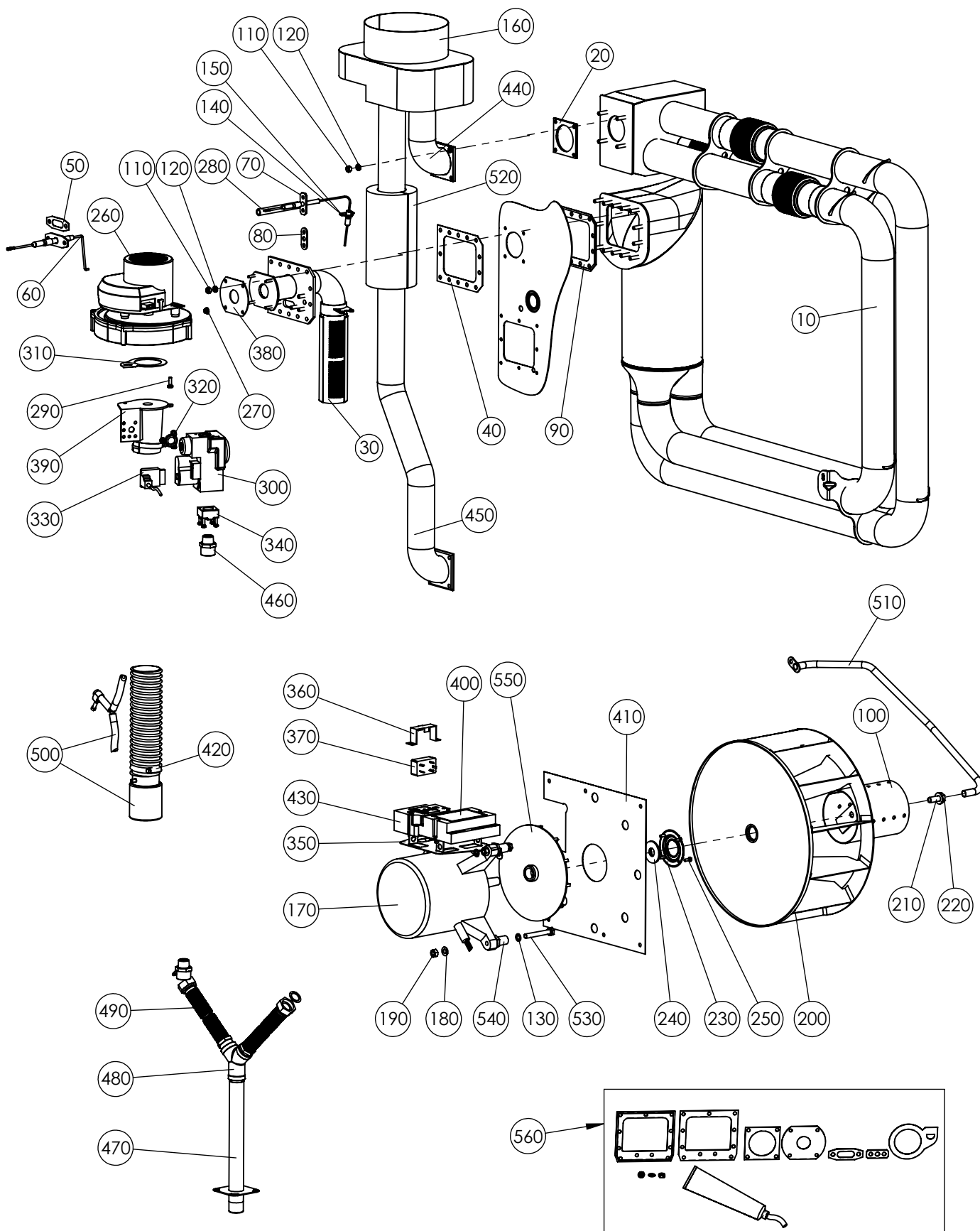
Gas GeniusMT 2011 Series/14 - Gas GeniusMT 2011 Series/14



Gas GeniusMT 2011 Series/16 - Gas GeniusMT 2011 Series/16

| | | | |
|-----|------------------|--|--|
| 10 | EL2005789 | Gas-Waermetauscher 20-11 | Gas Heat Exchanger 20-11 |
| 20 | EL0505953 | Dichtung Abgasflansch | exhaust flange gasket |
| 30 | EL0510247 | Gasbrennern kpl. | Gas burners cpl. |
| 40 | EL0505948 | Dichtung Brennerkammer | Gasket burner chamber |
| 50 | EL0505955 | Dichtung Zuendelektrode2 | Gasket ignition electrode |
| 60 | EL0507183 | Zuendelektrode | ignition electrode |
| 70 | EL0508819 | Ionisationselektrode | ionisation |
| 80 | EL0507478 | Dichtung ionisationselektrode | Gasket ionization electrode |
| 90 | EL0507458 | Dichtung Brennerkammer innen | Gasket burner chamber inside |
| 100 | EL0505353 | Schraube DIN 965 Torx | Screw DIN 965 Torx |
| 110 | EL0507998 | Keilsicherungsscheibenpaar ø5,4 DIN25210 | Wedge lock washer pair ø5 , 4 DIN25210 |
| 120 | EL0252867 | Sechskantmutter M5 V2A | Hexagon nut M5 V2A |
| 130 | EL0000396 | Sechskantmutter M3 V2A | Hex nut M3 V2A |
| 140 | EL0508821 | Elektrodenfuehrung | Guidance electrode |
| 150 | EL0570923 | Sechskantschraube M4x6 V2A | Hexagon screw M4x6 V2A |
| 160 | EL0771538 | Zugunterbrecher kpl. | Exhaust interrupter assy. |
| 200 | EL0743372 | Lüfterrad 350x110 | Main Fan wheel 350x110 |
| 210 | EL0749397 | Sechskantschraube M10x25 V2A | Hex bolt screw M10x25 V2A |
| 220 | EL0508876 | Keilsicherungsscheibenpaar ø10 DIN25210 A2 | Wedge lock washer ø10 pair DIN25210 A2 |
| 230 | EL0751448 | Dichtungshalterung | Seal retainer |
| 240 | EL0399442 | Wellendichtring | Shaft seal |
| 250 | EL0873470 | Sechskantschraube M4x12 V2A | Hexagon bolt M4x12 V2A |
| 260 | EL0742686 | Radiallüfter Gas | Centrifugal fan gas |
| 270 | EL0507813 | Verteilerhülse 20-11 | Distributor sleeve 20-11 |
| 280 | EL0039764 | Silikonschlauch d8 D12 95mm lg | Silicone hose d8 D12 95mm lg |
| 290 | EL0010685 | Linsenschraube M5x16 | Oval head screw M5x16 |
| 300 | EL0744050 | Gasregelventil | Gas control valve |
| 310 | EL0744085 | Dichtung Venturi | Venturi gasket |
| 320 | EL0743941 | Dichtungssatz Gasregelventil | Gasket set gas control valve |
| 330 | EL0763292 | Kabel mit Gleichrichter f. Gasventil | Cables with rectifier for gas valve |
| 340 | EL0770914 | Flansch gerade 1-2 Zoll | Flange just 1-2 inches |
| 350 | EL0783722 | Halteblech kpl. f. Gasfeuerungsautomat | Retaining plate assy. for gas burner control |
| 360 | EL0785164 | Haltebügel Netzfilter | Haltebügel line filter |
| 370 | EL0783692 | Netzfilter | Mains filter |
| 380 | EL0505956 | Dichtung Radialgebläse | Gasket radial fan |
| 390 | EL0743933 | Venturi Typ 003 | Venturi type 003 |
| 400 | EL0506522 | Gasfeuerungsautomat (lila Punkt) | Automatic burner control unit (purple dot) |
| 430 | EL0510284 | Zündtrafo Gas 013 | Gas ignition transformer 013 |
| 440 | EL0505105 | Abgasrohr kol. Oben | Exhaust pipe top |
| 450 | EL0771619 | Abgasrohr unten kpl. | Exhaust pipe bottom cpl. |
| 460 | EL0508077 | Doppelnippel G3-4xR1-2 | Double nipple G3 4xR1 -2 |
| 470 | EL0507859 | Gasanschlussrohr kpl. | Gas connection pipe assy. |
| 480 | EL0507506 | Y-Verteiler 3-4 V2A | Y distributor 3-4 V2A |
| 490 | EL0508901 | Ringwellschlauch A14-4 Zoll | Corrugated hose A14- 4 inch |
| 500 | EL0508099 | Ansaugkombination kpl. | suction combination compl. |
| 510 | EL0507814 | Wasserzulaufrohr kpl. | Water inlet pipe assy. |
| 520 | EL0785784 | Rohrschale alu rockwool D54x20 1500mm lg | Pipe bowl alu rockwool D54x20 1500mm lg |
| 530 | EL0749389 | Sechskantschraube M8x50 V2A | Hexagon bolt M8x50 V2A |
| 540 | EL0743615 | Motorabstandsbuchse | Motor spacer bushing |
| 550 | EL0747785 | Motorisolierblech | Motor insulation plate |
| 560 | EL0508151 | Spiralschlauchschele | Spiral hose clamp |
| 570 | EL0570826 | Kupferdichtung d8-D14 | Copper gasket d8 -D14 |
| 580 | EL0507503 | Dichtungssatz | Set of gaskets |
| | EL0507458 | Dichtung Brennkammer innen | Gasket combustion chamber inside |
| | EL0505948 | Dichtung Brennerkammer außen 6-2011 | Gasket burner chamber outside 6-2011 |
| | EL0505953 | Dichtung Abgasflansch | Exhaust flange gasket |
| | EL0505956 | Dichtung Radialgebläse | Gasket radial fan |
| | EL0505955 | Dichtung Zündelektrode 6-2011 | Gasket ignition electrode 6-2011 |
| | EL0507478 | Dichtung Ionisationselektrode 6-2011 | Gasket ionization probe 6-2011 |
| | EL0744085 | Dichtung Venturi | Venturi gasket |
| | EL0505353 | Torxschraube M5x16 | Torx M5x16 |
| | EL0553395 | Scheibenmutter M4 | Washer Nut M4 |
| | EL0507998 | Keilsicherung Scheibenpaar 5,4 | Wedge lock washer pair 5.4 |
| | EL0252867 | Sechskantmutter M5 | M5 hex nut |
| | EL0508049 | Graphitpaste 8ml | Graphite paste 8ml |

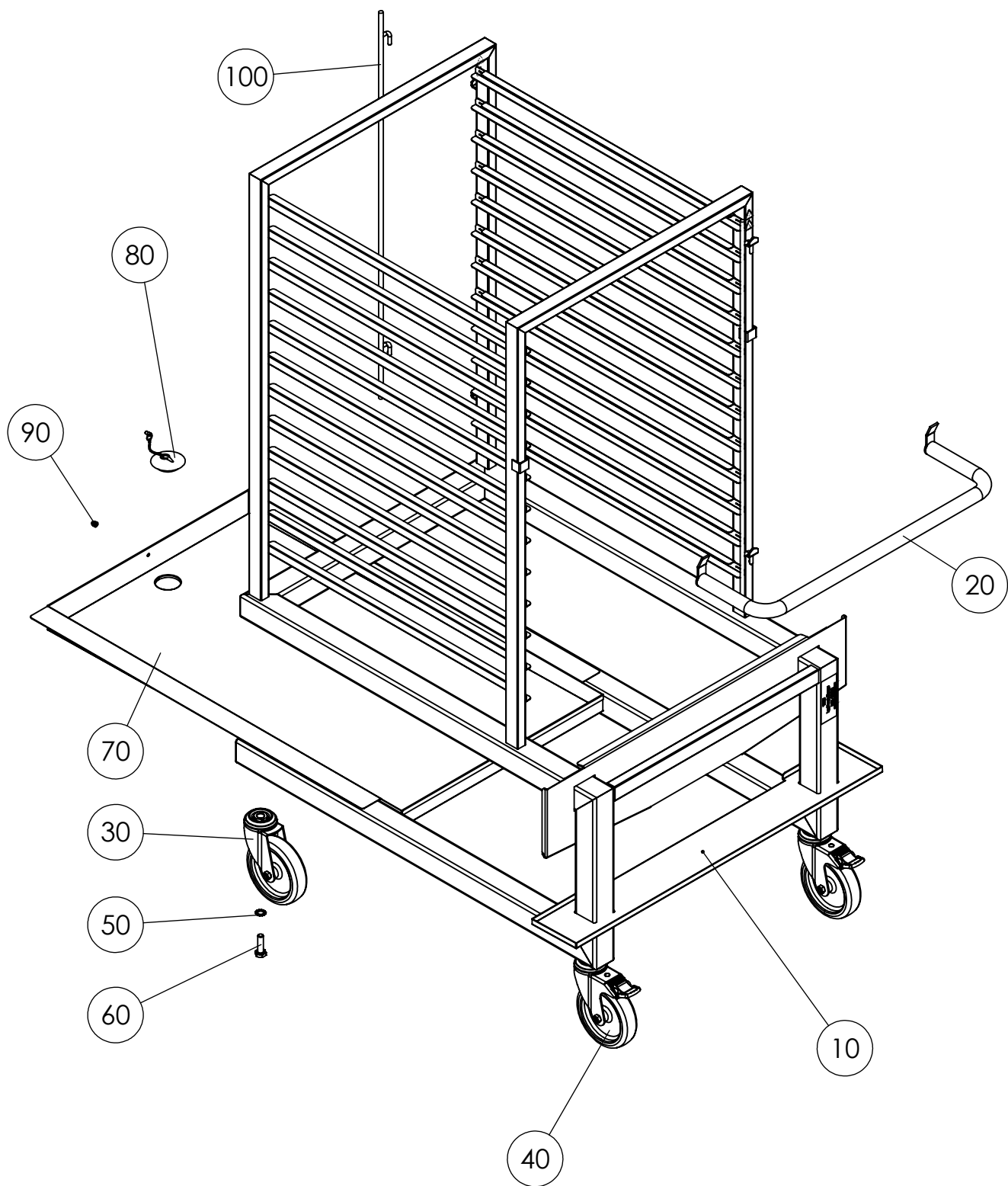
Gas GeniusMT 1221 2021 Series/16 - Gas GeniusMT 1221 2021 Series/16



Gas GeniusMT 1221 2021 Series/16 - Gas GeniusMT 1221 2021 Series/16

| | | | |
|-----|-----------|--|--|
| 10 | EL2005803 | Gas-Wärmetauscher 1220-21 | Gas heat exchanger 1220-21 |
| 20 | EL0505953 | Dichtung Abgasflansch M6 | Gasket exhaust flange M6 |
| 30 | EL0510248 | Gasbrenner kpl.1220-21 | Gas burner kpl.1220 -21 |
| 40 | EL0505949 | Dichtung Brennerkammer aussen | Gasket outside combustion chamber |
| 50 | EL0505954 | Dichtung Zündelektrode M6 1220-21 | Gasket ignition electrode M6 1220-21 |
| 60 | EL0506749 | Zündelektrode M6 1220-21 | Ignition electrode M6 1220-21 |
| 70 | EL0506748 | Ionisationselektrode M6 1220-21 | Ionisation electrode M6 1220-21 |
| 80 | EL0504999 | Dichtung Ionisationselektrode | Gasket ionization probe |
| 90 | EL0507459 | Dichtung Brennerkammer innen | Gasket burner chamber inside |
| 100 | EL0508456 | Verteilerhülse 1220-21 | Distributor sleeve 1220-21 |
| 110 | EL0507999 | Keilsicherungsscheibenpaar ø6,5 DIN25210 | Wedge lock washer pair ø6, 5 DIN25210 |
| 120 | EL0251887 | Sechskantmutter M6 V2A | Hex nut M6 V2A |
| 130 | EL0570826 | Kupferdichtung 8x14x1 | Copper seal 8x14x1 |
| 140 | EL0508821 | Elektrodenführung | Guidance electrode |
| 150 | EL0570923 | Sechskantschraube M4x6 V2A | Hexagon screw M4x6 V2A |
| 160 | EL0771538 | Zugunterbrecher kpl. | Exhaust interrupter assy. |
| 170 | EL0776556 | Motor 1220-21 | Motor 1220-21 |
| 180 | EL0001325 | Scheibe A8 | Washer A8 |
| 190 | EL0254177 | Sechskantmutter M8 V2A | Hex nut M8 V2A |
| 200 | EL0776521 | Lüfterrad 1220-21 | Main fan wheel 1220-21 |
| 210 | EL0749397 | Sechskantschraube M10x25 V2A | Hex bolt M10x25 V2A |
| 220 | EL0508876 | Keilsicherungsscheibenpaar ø10 DIN25210 A2 | Wedge lock washer ø10 pair DIN25210 A2 |
| 230 | EL0751448 | Dichtungshalterung | Gasket retainer |
| 240 | EL0399442 | Wellendichtring | Shaft gasket |
| 250 | EL0873470 | Sechskantschraube M4x12 V2A | Hexagon bolt M4x12 V2A |
| 260 | EL0507441 | Radialgebläse Gas rg 148 | Radial blower gas rg 148 |
| 270 | EL0553395 | Scheibenmutter M4 V2A | Washer Nut M4 V2A |
| 280 | EL0039764 | Silikonschlauch d8 D12 | Silicone hose d8 D12 |
| 290 | EL0010685 | Linsenschraube M5x16 | Oval head screw M5x16 |
| 300 | EL0744050 | Gasregelventil | Gas control valve |
| 310 | EL0744085 | Dichtung Venturi | Venturi gasket |
| 320 | EL0743941 | Dichtungssatz Gasregelventil | Gasket set gas control valve |
| 330 | EL0763292 | Kabel mit Gleichrichter f. Gasventil | Cables with rectifier for gas valve |
| 340 | EL0770914 | Flansch gerade 1-2 Zoll | Flange just 1-2 inches |
| 350 | EL0783722 | Halteblech kpl. f. Gasfeuerungsautomat | Retaining plate assy. for gas burner control |
| 360 | EL0785164 | Haltebügel Netzfilter | Mounting bracket line filter |
| 370 | EL0783692 | Netzfilter | Mains filter |
| 380 | EL0505956 | Dichtung Radialgebläse | Gasket radial fan |
| 390 | EL0773174 | Venturi 1220-21 | Venturi 1220-21 |
| 400 | EL0506522 | Gasfeuerungsautomat (lila Punkt) | Automatic burner control unit (purple dot) |
| 410 | EL0747815 | Motorisierblech | Motor insulation plate |
| 420 | EL0508151 | Spiralschlauchschele ø50 VA | Spiral hose clamp ø50 VA |
| 430 | EL0510284 | Zündtrafo Gas 013 | Gas ignition transformer 013 |
| 440 | EL0505105 | Abgasrohr kol. Oben M6 1221 GAS | Exhaust pipe kol .top 1221 Gas |
| | EL0505113 | Abgasrohr kol. Oben M6 2021GAS | Exhaust pipe kol . Top 2021 Gas |
| 450 | EL0505121 | Abgasrohr unten kpl. | Exhaust pipe bottom cpl. |
| 460 | EL0508077 | Doppelnippel G3-4xR1-2 | Double nipple G3 4xR1 -2 |
| 470 | EL0507859 | Gasanschlussrohr kpl. | Gas connection pipe assy. |
| 480 | EL0507506 | Y-Verteiler 3-4 V2A | Y distributor 3-4 V2A |
| 490 | EL0508901 | Ringwellschlauch A14-4 Zoll | Corrugated hose A14- 4 inch |
| 500 | EL0508099 | Ansaugkombination kpl. | Suction combination cpl. |
| 510 | EL0508399 | Wasserzulaufrohr kpl. 1220-21 Gas | Water inlet pipe assy. 1220-21 gas |
| 520 | EL0785784 | Rohrschale alu rockwool D54x20 1500mm lg | Pipe bowl alu rockwool D54x20 1500mm lg |
| 530 | EL0749389 | Sechskantschraube M8x50 V2A | Hexagon bolt M8x50 V2A |
| 540 | EL0788284 | Motorabstandsbuchse M8 | Motor distance M8 socket |
| 550 | EL0782947 | Kühlrad Motor | Cooling wheel motor |
| 560 | EL0507499 | Dichtungssatz 12-2021 | Gasket Kit 12-2021 |
| | EL0507459 | Dichtung Brennkammer innen | Gasket combustion chamber inside |
| | EL0505949 | Dichtung Brennerkammer außen 12-2021 | Gasket burner chamber outside 12-2021 |
| | EL0505952 | Dichtung Abgasflansch 12-2021 | Exhaust flange gasket 12-2021 |
| | EL0505956 | Dichtung Radialgebläse | Gasket radial fan |
| | EL0505954 | Dichtung Zündelektrode 12-2021 | Gasket ignition electrode 12-2021 |
| | EL0507481 | Dichtung Ionisationselektrode 12-2021 | Gasket ionization probe 12-2021 |
| | EL0744085 | Dichtung Venturi | Gasket venturi |
| | EL0553395 | Scheibenmutter M4 | Washer Nut M4 |
| | EL0507999 | Keilsicherung Scheibenpaar 6,5 | Wedge lock washer pair 6.5 |
| | EL0251887 | Sechskantmutter M6 | Hex nut M6 |
| | EL0508049 | Graphitpaste 8ml | Graphite paste 8ml |

Hordengestellwagen 2011 1221 2021 Serie/16- Trolley 2011 1221 2021 Series/16



Hordengestellwagen 2011 1221 2021 - Trolley 2011 1221 2021

| | | | |
|-----|-----------|--------------------------------------|------------------------------------|
| 10 | EL0506908 | Hordenwagen 1221 | Trolley 1221 |
| | EL0506897 | Hordenwagen 2021 | Trolley 2021 |
| | EL0506878 | Hordenwagen 2011 | Trolley 2011 |
| 20 | EL0870307 | Bügelgriff 1221 2021 | Bow handle 1221 2021 |
| | EL0745359 | Bügelgriff 2011 | Bow handle 2011 |
| 30 | EL0506858 | Lenkrolle ohne Feststeller | Castor without brake |
| 40 | EL0506859 | Lenkrolle mit Feststeller | Castor with brake |
| 50 | EL0349771 | Fächerscheibe DIN 6798 A10 v2A | Serrated washer DIN 6798 A10 v2A |
| 60 | EL0786683 | Sechskantschraube DIN 933 M10x35 V2A | Hexagonal screw DIN 933 M10x35 V2A |
| 70 | EL0506884 | Tropfwanne 1221 2021 | Drip tray 1221 2021 |
| | EL0506857 | Tropfwanne 2011 | Drip tray 2011 |
| 80 | EL0506855 | Stöpsel mit Kette | Plug with chain |
| 90 | EL0261769 | Hutmutter DIN 1587 M5 V2A | Cap nut DIN 1587 M5 V2A |
| 100 | EL0506902 | Arretierungsstange kpl. 1221 | Locking rod assy. 1221 |
| | EL0506882 | Arretierungsstange kpl. 2021 2011 | Locking rod assy. 2021 2011 |

Kabelbaum GeniusMT 611 1011 Serie/16 - Harnesses GeniusMT 611 1011 Series/16

| | | | |
|----|-----------|--|---|
| 99 | EL2000992 | Kabelbaum MOD-BUS CPU-IO-Board | Harness MOD-Bus CPU I/O board |
| 99 | EL2000995 | Kabelbaum 2011 Einspeisung 3~N PE 400V | Harness 2011 power supply 3 ~ 400V N PE |
| 99 | EL2000996 | Kabelbaum 2011 Einspeisung Sonderspannung EU | Harness 2011 Special voltage supply EU |
| 99 | EL2000997 | Kabelbaum 2011 Steuerung 12/24V | Harness 2011 control 12/24V |
| 99 | EL2000998 | Kabelbaum 2011 Steuerung 230V | Harness 2011 control 230V |
| 99 | EL2001000 | Kabelbaum 1221 Einspeisung 3~N PE 400V | Harness 1221 power supply 3 ~ 400V N PE |
| 99 | EL2001003 | Kabelbaum 1221 Einspeisung Sonderspannung EU | Harness 1221 special voltage supply EU |
| 99 | EL2001006 | Kabelbaum 1221 Steuerung 12/24V | Harness 1221 controller 12/24V |
| 99 | EL2001007 | Kabelbaum 1221 Steuerung 230V | Harness 1221 control 230V |
| 99 | EL2001018 | Kabelbaum Energieoptimierung ABCD (UL) | Harness energy optimization ABCD (UL) |
| 99 | EL2001103 | Kabelbaum MOD-Bus Gas-IO-Board | Harness MOD-Bus gas-I/O board |
| 99 | EL2001104 | Kabelbaum 1221 Gas | Harness 1221 gas |
| 99 | EL2001146 | Kabelbaum 2011 Gas | Harness 2011 gas |
| 99 | EL2001147 | Kabelbaum 2021 Einspeisung 3~N PE 400V | Harness 2021 supply 3 ~ 400V N PE |
| 99 | EL2001148 | Kabelbaum 2021 Steuerung 12/24Vdc | Harness 2021 control 12/24Vdc |
| 99 | EL2001149 | Kabelbaum 2021 Steuerung 230Vac | Harness 2021 control 230Vac |
| 99 | EL2001177 | Kabelbaum 2021 Einspeisung Sonderspannung EU | Harness 2021 special voltage supply EU |
| 99 | EL2001182 | Kabelbaum 2021 Gas | Harness 2021 gas |
| 99 | EL2003061 | Kabelbaum Danfoss Zündtrafo | Harness Danfoss-Ignition-Transformer |

EL2001325

Version 1.12

Release 1.12

Technische Änderungen vorbehalten.

Subject to technical changes.

04/2020

Eloma GmbH | Otto-Hahn-Straße 10 | 82216 Maisach / Germany
Phone: +49 (0) 8141 395-0 | Fax: +49 (0) 8141 395-130 | info@eloma.com | www.eloma.com

an Ali Group Company



The Spirit of Excellence