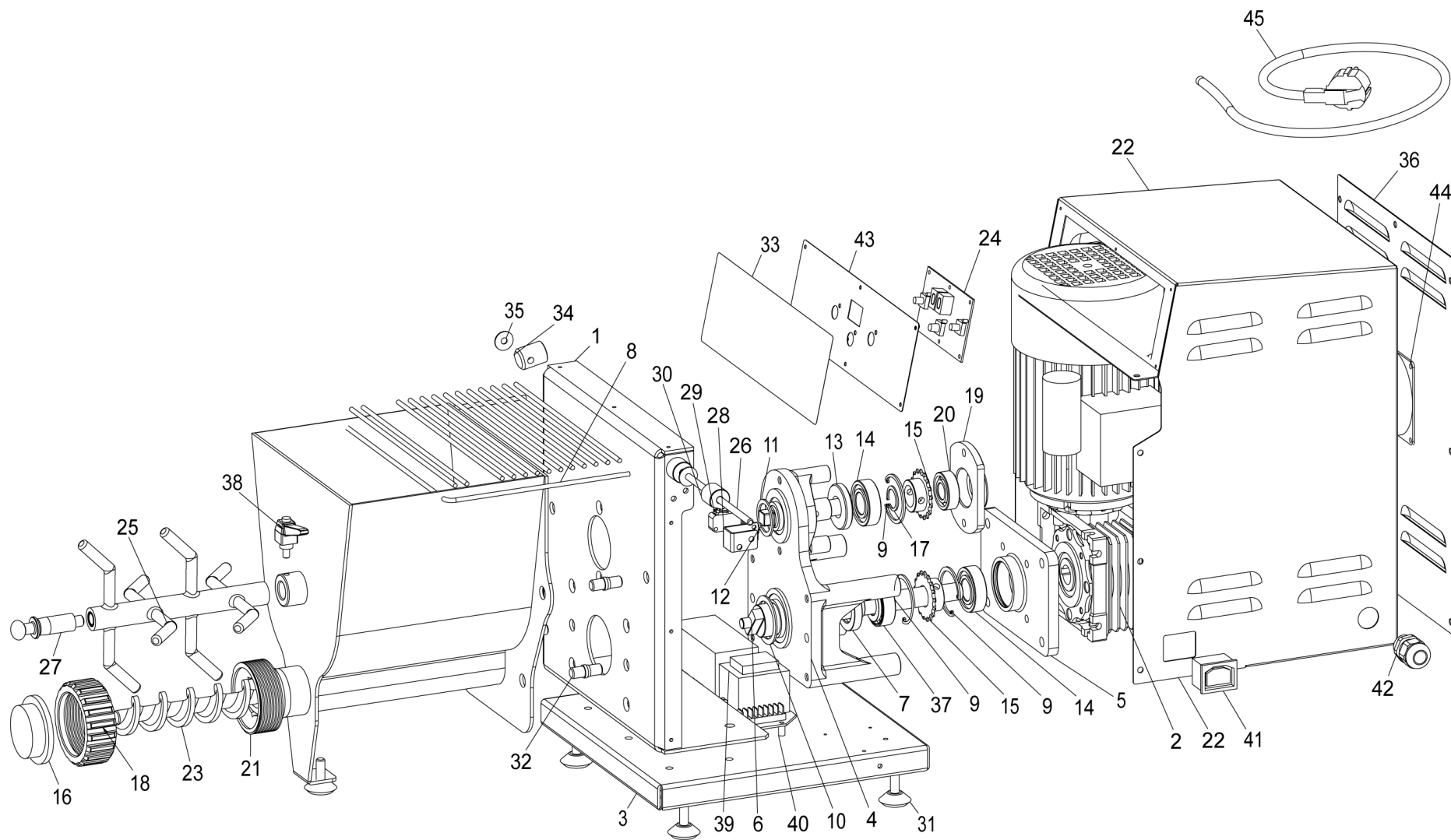


SPEC.	N.	CODE	
	1	SL4363	TELAIO - FRAME
230V/1Ph/50Hz	2	SL3528	MOTORIDUTTORE - GEARMOTOR
	3	SL4362	BASE - DISTRIBUTOR
	4	SL4364	SUPPORTO - SUPPORT
	5	SL4365	SUPPORTO - SUPPORT
	6	SL4366	ALBERO - SHAFT
28X42X7	7	SL3943	Paraolio - Oil seal
	8	SL4368	COPERCHIO - COVER
	9	SL2056	Seeger - Seeger
	10	SL6469	GUARNIZIONE - GASKET
	11	SL6464	GUARNIZIONE - GASKET
	12	SL4301	ALBERO - SHAFT
20X42X7	13	SL2707	Paraolio - Oil seal
	14	SL1799	Cuscinetto - Bearing
	15	SL4391	PIGNONE - PINION
	16	//	TRAFILA - DIE
	17	SL3486	Seeger - Seeger
	18	SL4312	GHIERA - RING NUT
	19	SL4321	SUPPORTO - SUPPORT
6002 2RS	20	SL2472	Cuscinetto - Bearing
	21	SL4304	VASCA - BOWL
	22	SL6467	Carcassa - Housing
	23	SL4343	Elica - Screw shaft
comandi	* 24	SL1557	SCHEDA ELETTRONICA - ELECTRONIC CARD
	25	SL4344	GANCIO - HOOK
	26	SL4346	ALBERO - SHAFT
	27	SL4322	POMELLO - BALL KNOB
	28	SL4325	STAFFA - BRACKET
	* 29	SL0885	Microinterruttore - Microswitch
	30	SL2227	Camma - Cam
	31	SL4272	Piedino - Foot
	32	SL4336	PRIGIONIERO - STUD BOLT
	33	SL4375	Etichetta - Label
	34	SL4349	BATTUTA - STOP
	35	SL6477	ROSETTA - WASHER
	36	SL4373	COPERCHIO - COVER
32004 X/Q	37	SL6466	CUSCINETTO - BEARING
	38	SL6463	LEVA - LEVER
potenza	39	SL0999	Scheda elettronica - Electronic card
	40	3190050	Distanziale - Spacer

*Ricambio consigliato - Advised spare parts



POS. CODE

1	SL4363
2	SL3528
3	SL4362
4	SL4364
5	SL4365
6	SL4366
7	SL3943
8	SL4368
9	SL2056
10	SL6469
11	SL6464
12	SL4301
13	SL2707
14	SL1799
15	SL4391
16	//
17	SL3486
18	SL4312
19	SL4321
20	SL2472
21	SL4304
22	SL6467
23	SL4343
24	SL1557
25	SL4344
26	SL4346
27	SL4322
28	SL4325
29	SL0885
30	SL2227
31	SL4272
32	SL4336
33	SL4375
34	SL4349
35	SL6477
36	SL4373
37	SL6466
38	SL6463
39	SL0999
40	3190050

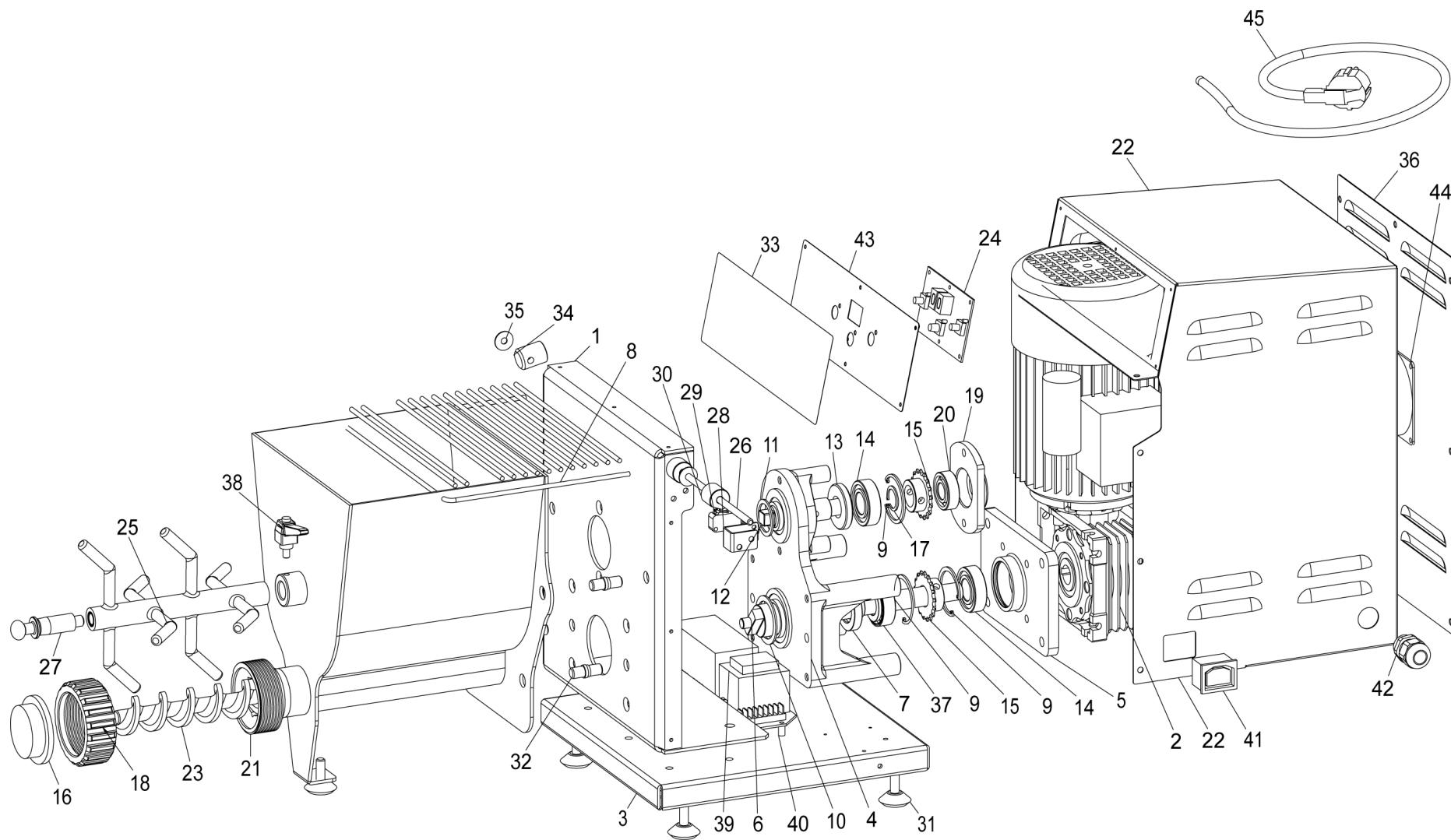


TAVOLA RICAMBI SPARE PARTS

PF25E

SPEC.	N.	CODE	DENOMINAZIONE - DENOMINATION
	41	SL1555	CONNETTORE - CONNECTOR
M20X1,5	42	SL4408	PRESSACAVO - CONNECTOR
	43	SL4327	PANNELLO - PANEL
	44	SL1556	VENTOLA - FAN
schuko	45	SL4287	Cavo elettrico - Electric cable
	60	SL4418	CATENA - CHAIN

*Ricambio consigliato - Advised spare parts



POS. CODE

41	SL1555
42	SL4408
43	SL4327
44	SL1556
45	SL4287
60	SL4418