

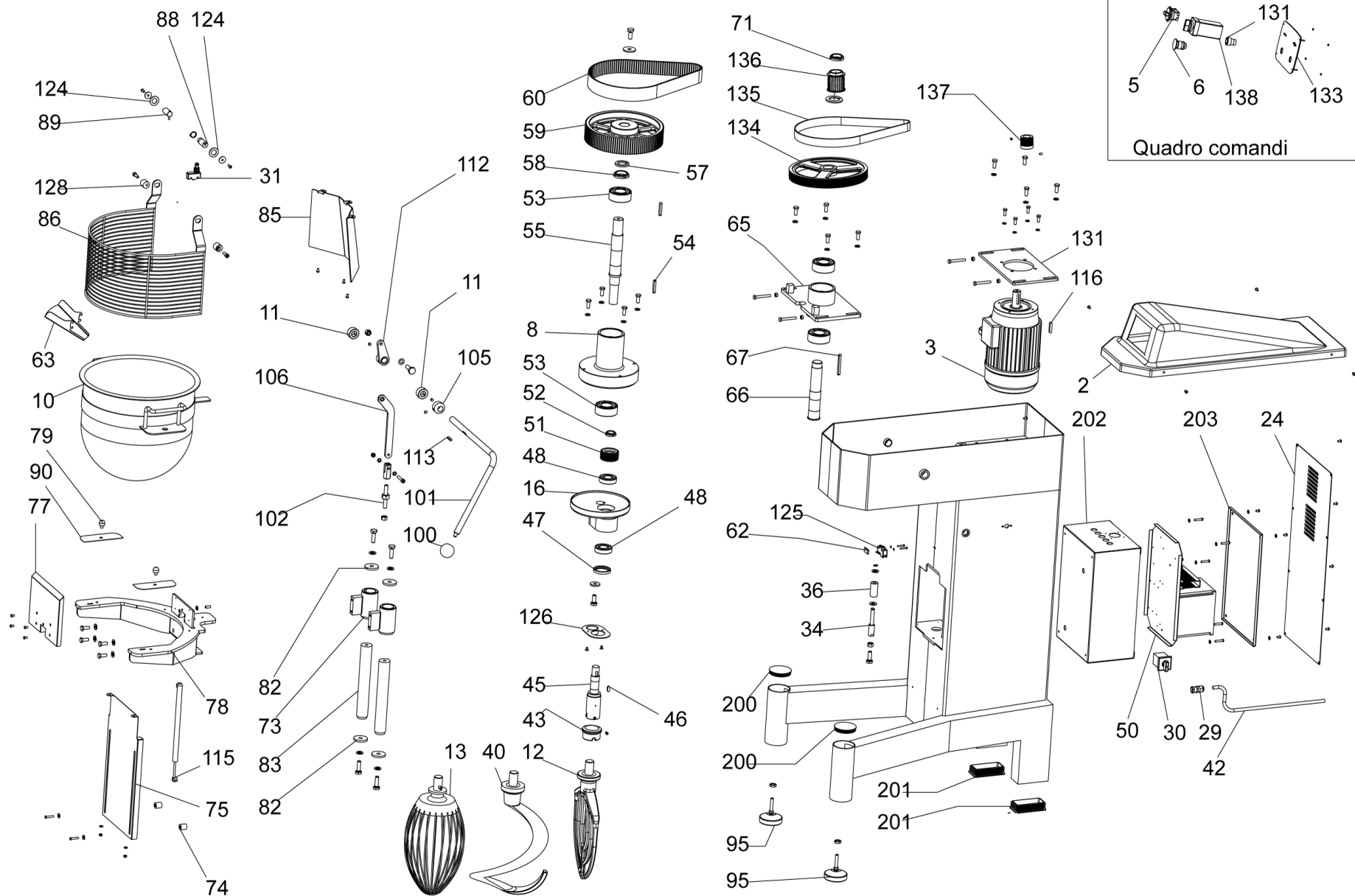


## SPARE PARTS TAVOLA RICAMBI

PLN40M-60M

SPEC.	N.	CODE	DENOMINAZIONE - DENOMINATION
	2	CO8820	COVER - COPERCHIO
PLN40M	3	CO8821	MOTOR - MOTORE
PLN60M	3	CO8842	MOTOR - MOTORE
	* 5	CO8810	Timer - Timer
emergenza	* 6	CO8812	Bell - Campana
	8	CO8844	Bell - Campana
PLN40M	10	ACPLN40BL	BOWL - VASCA
PLN60M	10	ACPLN60BL	BOWL - VASCA
PLN40M	12	ACPLN40BR	PADDLE - SPATOLA
PLN60M	12	ACPLN60BR	PADDLE - SPATOLA
PLN40M	13	ACPLN40WP	Whisk - Frusta
PLN60M	13	ACPLN60WP	Whisk - Frusta
	16	CO8845	Differential bevel - Planetario
PLN40M	24	CO8846	CASING - CARTER
PLN60M	24	CO8847	CASING - CARTER
PG13,5	29	SL1757	Cable clamp - Pressacavo
on-off	30	CO8822	KNOB - MANOPOLA
	* 31	CO8848	Microswitch - Microinterruttore
PLN40M	40	ACPLN40HK	Hook - Uncino
PLN60M	40	ACPLN60HK	Hook - Uncino
	43	CO8849	RING NUT - GHIERA
	45	CO8850	SHAFT - ALBERO
62x45x8	47	CO8851	Oil seal - Paraolio
	48	CO8852	BEARING - CUSCINETTO
PLN40M	50	CO8853	ELECTRIC SYSTEM - IMPIANTO ELETTRICO
PLN60M	50	CO8854	ELECTRIC SYSTEM - IMPIANTO ELETTRICO
	51	CO8855	GEAR - INGRANAGGIO
	53	CO8856	BEARING - CUSCINETTO
	55	CO8857	SHAFT - ALBERO
	59	CO8858	GUARD - PROTEZIONE
PLN40M	* 60	CO8859	BELT - CINGHIA
PLN60M	* 60	CO8860	BELT - CINGHIA
	63	CO8861	CHUTE - SCIVOLO
	66	CO8862	SHAFT - ALBERO
PLN40M	73	CO8863	SUPPORT - SUPPORTO
PLN60M	73	CO8864	SUPPORT - SUPPORTO
	75	CO8865	CASING - CARTER
	75	CO8866	CASING - CARTER
	78	CO8867	BOOM - BRACCIO
	78	CO8868	BOOM - BRACCIO

\*Ricambio consigliato - Advised spare parts



# POS. CODE

2	CO8820
3	CO8821
3	CO8842
5	CO8810
6	CO8812
8	CO8844
10	ACPLN40BL
10	ACPLN60BL
12	ACPLN40BR
12	ACPLN60BR
13	ACPLN40WP
13	ACPLN60WP
16	CO8845
24	CO8846
24	CO8847
29	SL1757
30	CO8822
31	CO8848
40	ACPLN40HK
40	ACPLN60HK
43	CO8849
45	CO8850
47	CO8851
48	CO8852
50	CO8853
50	CO8854
51	CO8855
53	CO8856
55	CO8857
59	CO8858
60	CO8859
60	CO8860
63	CO8861
66	CO8862
73	CO8863
73	CO8864
75	CO8865
75	CO8866
78	CO8867
78	CO8868

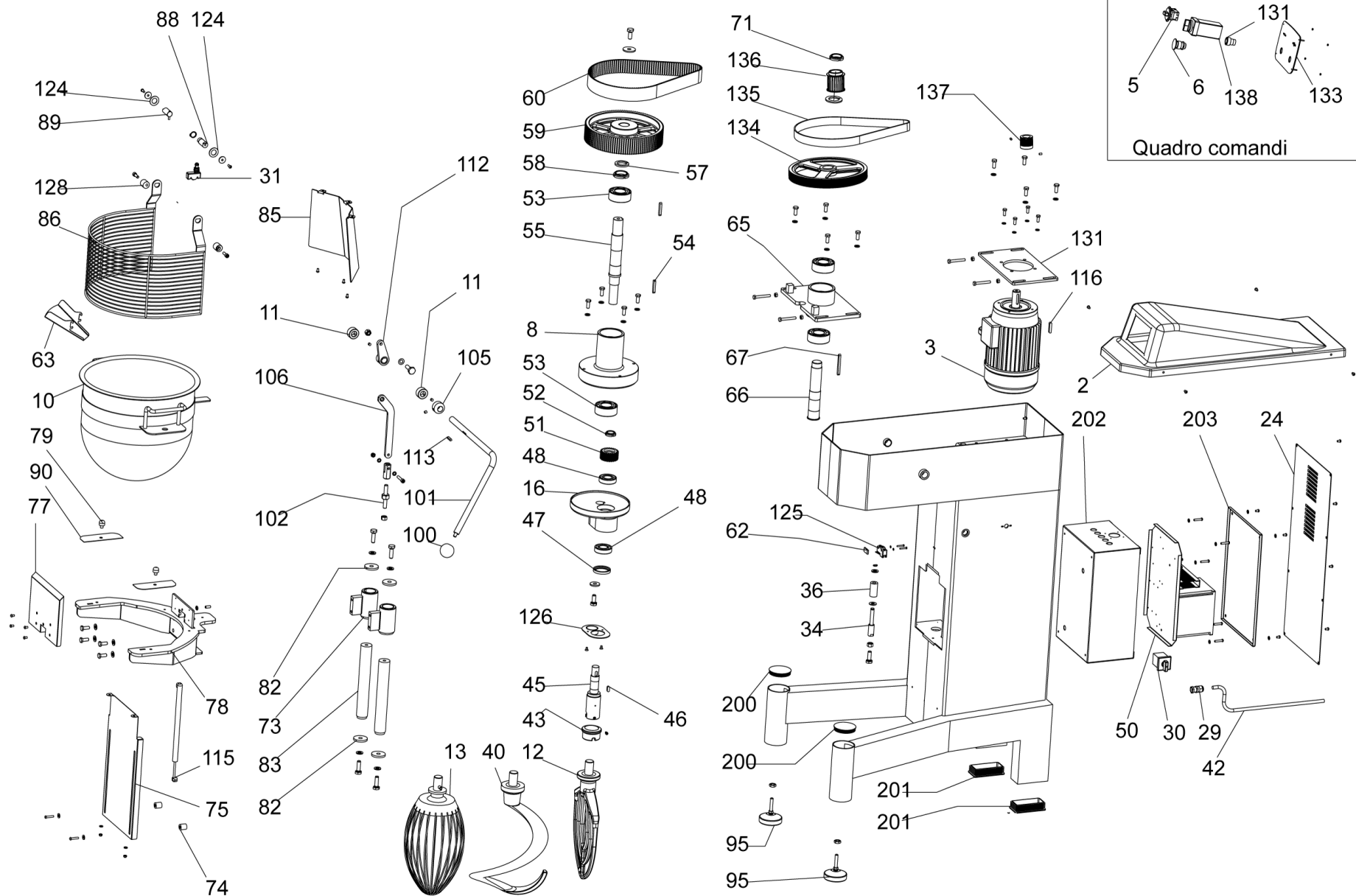


## SPARE PARTS TAVOLA RICAMBI

PLN40M-60M

SPEC.	N.	CODE	DENOMINAZIONE - DENOMINATION
	79	CO8841	PIN - PERNO
PLN40M	83	CO8869	COLUMN - COLONNA
PLN60M	83	CO8870	COLUMN - COLONNA
	85	CO8871	CASING - CARTER
PLN40M	86	CO8872	GRID - GRIGLIA
PLN60M	86	CO8873	GRID - GRIGLIA
	95	CO8875	FOOT - PIEDINO
	102	CO8876	TIE ROD - TIRANTE
	112	CO8877	SUPPORT - SUPPORTO
a gas	115	CO8878	SPRING - MOLLA
	* 125	CO8832	Microswitch - Microinterruttore
	128	CO8879	BUSHING - BOCCOLA
Start	* 131	CO8880	PUSH BUTTON - PULSANTE
	133	CO8881	Control panel - Pannello di controllo
	134	CO8882	PULLEY - PULEGGIA
	* 135	CO8883	BELT - CINGHIA
PLN40M	136	CO8884	PULLEY - PULEGGIA
PLN60M	136	CO8885	PULLEY - PULEGGIA
	137	CO8886	PULLEY - PULEGGIA
	138	CO8887	SWITCH - INTERRUTTORE

\*Ricambio consigliato - Advised spare parts



POS. CODE	
79	CO8841
83	CO8869
83	CO8870
85	CO8871
86	CO8872
86	CO8873
95	CO8875
102	CO8876
112	CO8877
115	CO8878
125	CO8832
128	CO8879
131	CO8880
133	CO8881
134	CO8882
135	CO8883
136	CO8884
136	CO8885
137	CO8886
138	CO8887