



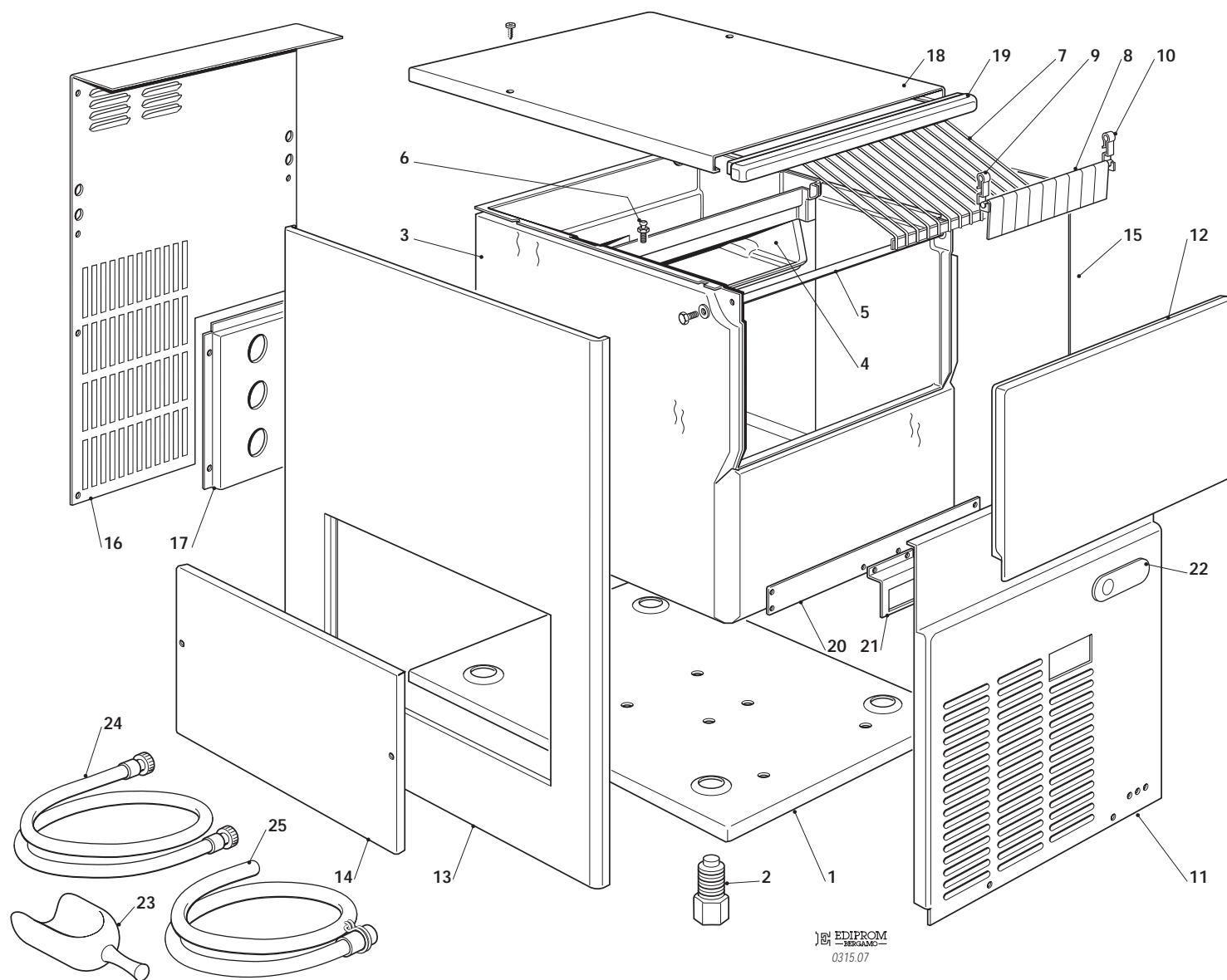
KG 22

"J" SERIES

R 134 A VERSION

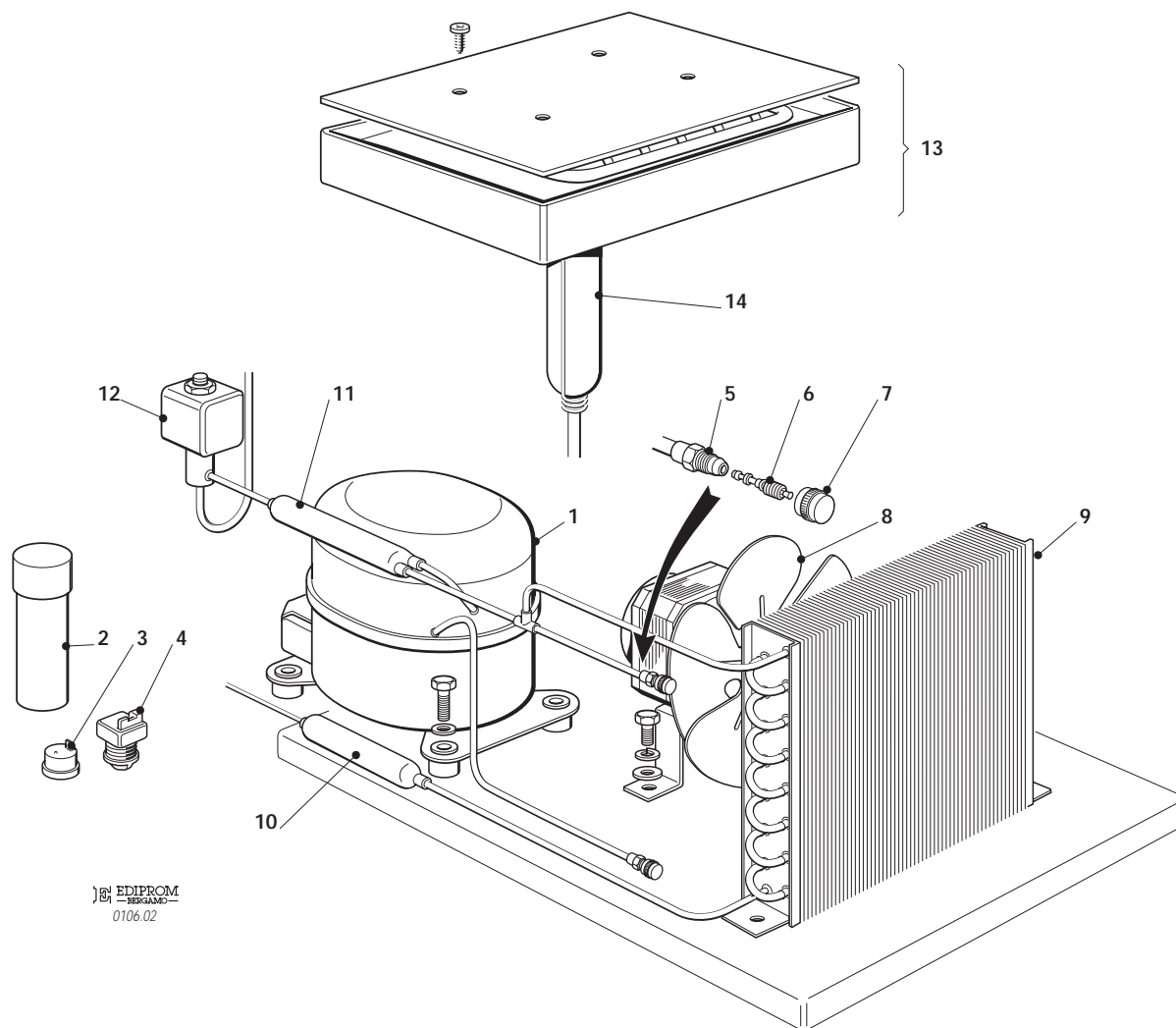
**SPARE PARTS LIST
CATALOGO RICAMBI
CATALOGUE PIÈCES DÉTACHÉES
ERSATZTEILENKATALOG**

| PAGE PAGINA PAGE SEITE | TABLE OF CONTENTS | INDICE | TABLE DES MATIERES | INHALTVERZEICHNIS |
|---------------------------------|---------------------------------------------|-----------------------------------------------|----------------------------------------------------|------------------------------------------|
| 1 | TABLE OF CONTENTS | INDICE | TABLE DES MATIERES | INHALTVERZEICHNIS |
| 2/3 | UNIT PANELS | ASSIEME MOBILE | ENS. CAROSSERIE | MACHINE GEHAUSE |
| 4/5 | REFRIGERANT SYSTEM AIR COOLED | SISTEMA REFRIGERANTE RAFFR. AD ARIA | CIRCUIT FRIGORIFIQUE REFROID. A AIR | GEFRIERSYSTEM LUFTGEKUEHLT |
| 6/7 | REFRIGERANT SYSTEM WATER COOLED | SISTEMA REFRIGERANTE RAFFR. AD ACQUA | CIRCUIT FRIGORIFIQUE REFROID. A EAU | GEFRIERSYSTEM WASSERGEKUEHLT |
| 8/9 | WATER SYSTEM | CIRCUITO IDRAULICO | CIRCUIT HYDRAULIQUE | WASSER SYSTEM |
| 10/11 | CONTROL BOX | SCATOLA DI CONTROLLO | BOITE ELECTRIQUE | SCHALTSCHRANK |
| 12 | COMPRESSOR AND ELECTRIC COMPONENT CHARTS | TABELLA COMPRESSORI E COMPONENTI ELETTRICI | LISTE DES COMPRESSEURS ET COMPOSANTS ELECTRIQUE | KOMPRESSOR UND ELEKTRISCHER TEILLISTE |



KG 22 - UNIT PANELS - ASSIEME MOBILE - ENS. CARROSSERIE - MACHINE GEHAUSE

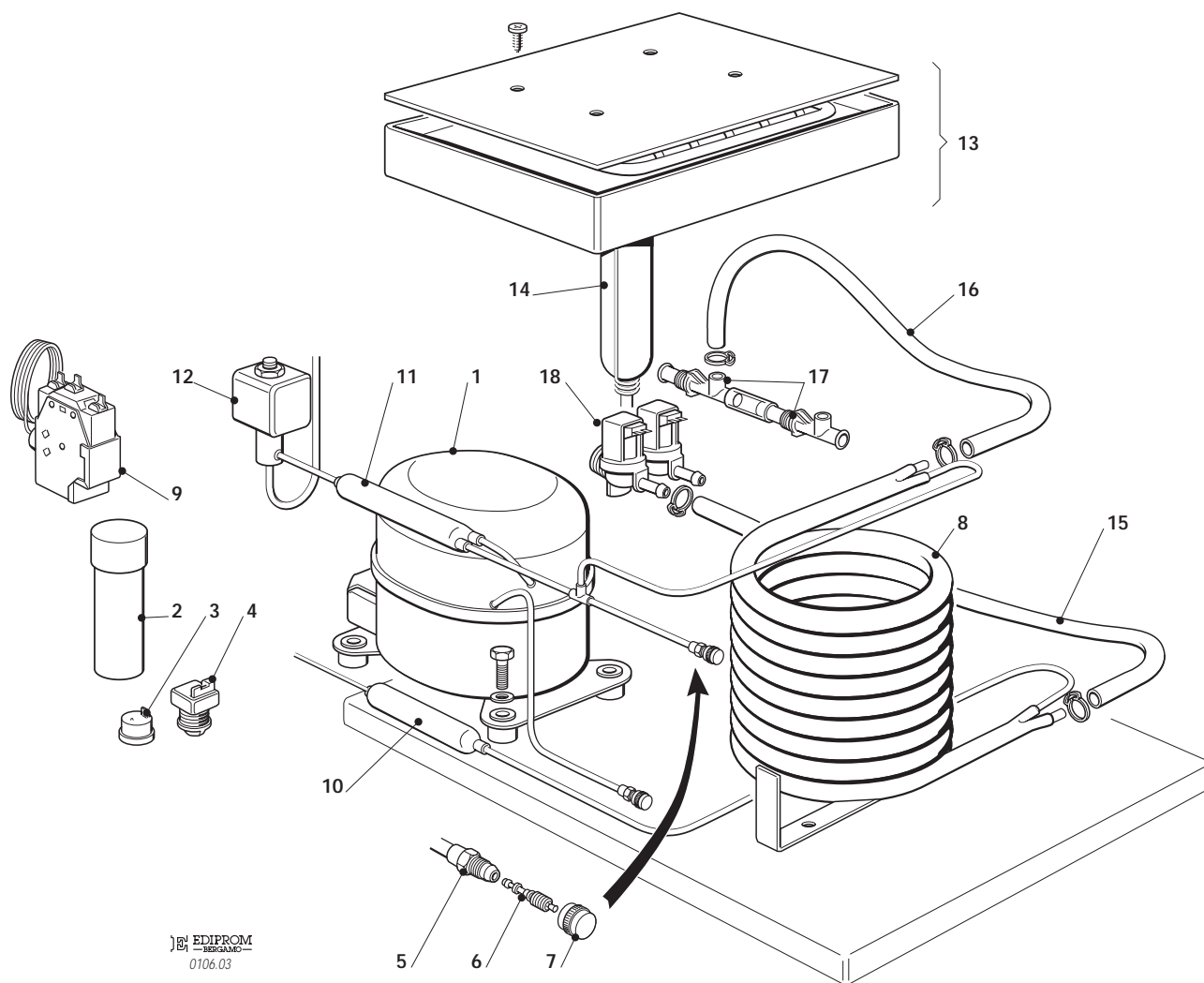
| ITEM NO POS NO REP. NO REF. NO | PART NO CODICE REFERENCE STUECK NR | DESCRIPTION | DESCRIZIONE | DESIGNATION | BESCHREIBUNG |
|-----------------------------------------|---------------------------------------------|---------------------------|-----------------------------|--------------------------|-------------------------------|
| 1 | 702311 00 | BASE | PIASTRINA DI BASE | PLAQUE DE BASE | GRUNDPLATTE |
| 2 | 650382 01 | LEG | PIEDE REGOLABILE | PIED RÉGLABE | GERÄTEFUSS |
| 3 | 782093 00R | INSULATED BIN ASSY | ASSIEME CELLA ISOLATA | ENS. CABINE | ISOLIEREISSPEICHER |
| 4 | 660627 01 | EVAPORATOR HOUSING | INVOLUCRO EVAPORATORE | CHAMBRE INTERIEUR | CELLE INTERN |
| 5 | 732016 06 | BIN DOOR BRACKET | ASTA PORTELLO | TIGE PORTE | KLAPPENACHSE |
| 6 | 650790 00 | STUD | PERNO | AXE | STIFT |
| 7 | 650705 00 | ICE DEFLECTOR | GRIGLIA SCORRIMENTO CUBETTI | GRILLE GLISSEMENT GLAÇON | ABGLEITGRILL |
| 8 | 783171 00R | CURTAIN ASSY | ASSIEME TENDINA | ENS. LAMELLE | ABDECKKLAPPE GESAMTHEIT |
| 9 | 660388 00 | RIGHT CURTAIN SUPPORT | SUPP. TENDINA DESTRO | SUPP. LAMELLE DROITE | RECHTE ABDECKKLAPPE HALTERUNG |
| 10 | 660388 01 | LEFT CURTAIN SUPPORT | SUPP. TENDINA SINISTRO | SUPP. LAMELLE GAUCHE | LINKE ABDECKKLAPPE HALTERUNG |
| 11 | 721794 00 | FRONT PANEL S.S. | PANNELLO ANTERIORE INOX | PANNEAU AVANT ACIER INOX | VORDERWAND EDELSTAHL |
| 12 | 782092 04R | BIN DOOR | SPORTELLO | PORTE CABINE | SPEICHERTUER |
| 13 | 721786 00 | LEFT SIDE PANEL S.S. | PANNELLO SINISTRO INOX | JOUE GAUCHE ACIER INOX | LINKE GEHÄUSESEITE EDELSTAHL |
| 14 | 702026 02 | SERVICE PANEL | PANNELLO DI ISPEZIONE | PANNEAU DE SERVICE | SERVICE PANEL |
| 15 | 721785 00 | RIGHT SIDE PANEL S.S. | PANNELLO DESTRO INOX | JOUE DROITE ACIER INOX | RECHTEGEHÄUSESEITE EDELSTAHL |
| 16 | 702309 00 | REAR PANEL | PANNELLO POSTERIORE | PANNEAU POSTERIEUR | HINTERE ABDECKUNG |
| 17 | 702301 00 | METAL BRACKET FOR FITTING | SUPPORTO ATTACCHI | SUPPORT DE RACCORDS | METALLTRÄGER |
| 18 | 721791 00 | TOP PANEL S.S. | PANNELLO SUPERIORE INOX | ENS. COUVERCLE | DECKEL GESAMTHEIT |
| 19 | 660691 00 | TOP FRONTAL | FRONTALE SUPERIORE | FRONTAL SUPERIEURE | ABDECK HAUBE |
| 20 | 702308 00 | FRONT SUPPORT | TRAVERSO ANT. | TRAVERSE ANTÉRIEURE | VORDERE VERBINDUNGSSTREBE |
| 21 | 705217 00 | SWITCH BRACKET | SUPPORTO INTERRUETTORE | SUPPORT INTERRUPTEUR | TRAEGER SCHALTER |
| 22 | 650734 00 | SAGI LOGO | TARGHETTA SAGI | EMBLEME SAGI | SAGI ABGEBILDET |
| 23 | 650071 00 | ICE SCOOP | SESSOLA | SASSE | EISSCHAUFEL |
| 24 | 060513 00 | KIT WATER SUPPLY HOSE | KIT TUBO ALIM. ACQUA | KIT TUYAU D'ALIM. EAU | WASSER ANSCHLUSSSCHLAUCH |
| 25 | 060513 01 | KIT WATER DRAIN HOSE | KIT TUBO SCARICO ACQUA | KIT TUYAU VIDANGE EAU | WASSER SLAUFSCHLAUCH |



EDIPROM
0106.02

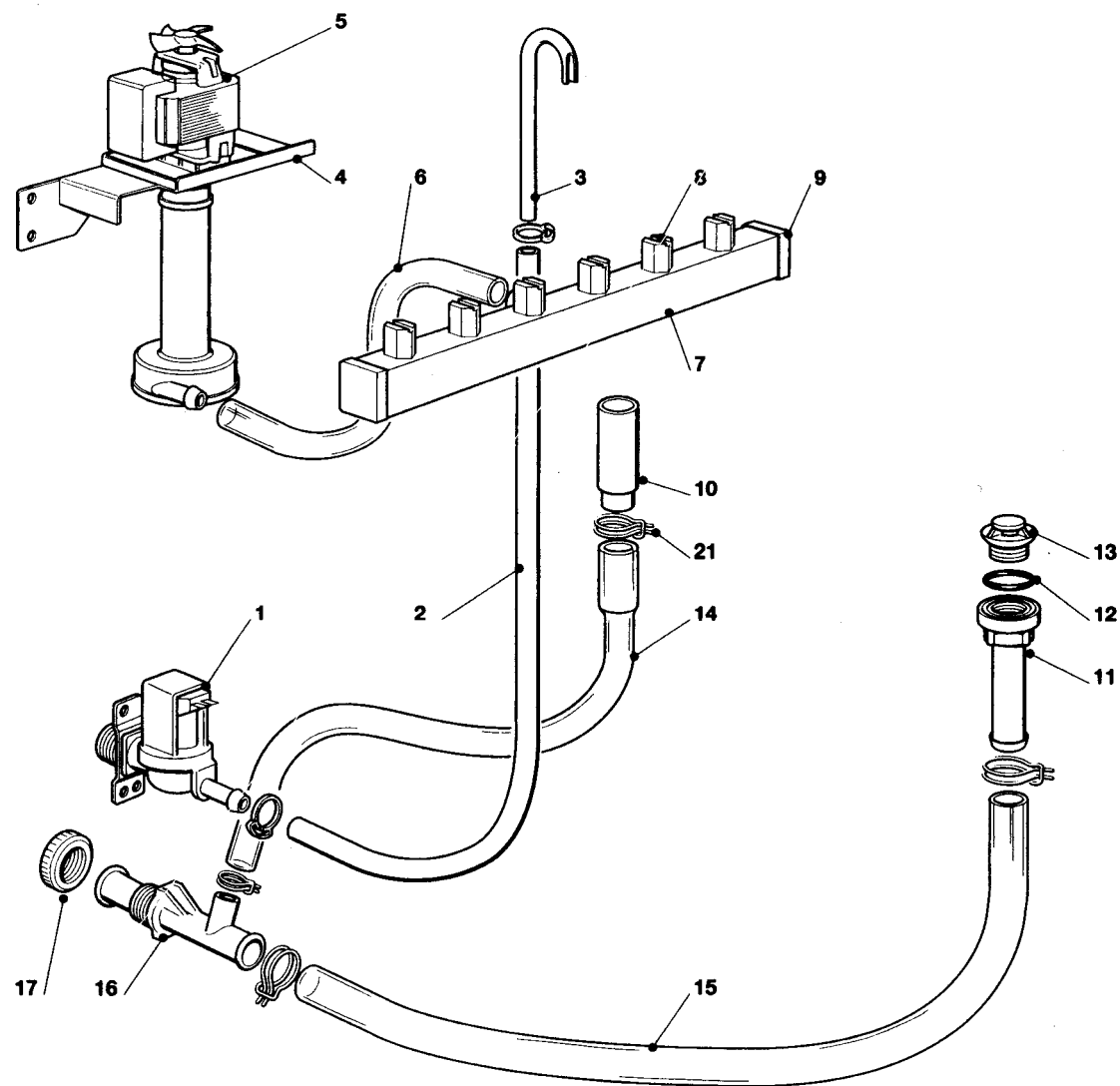
KGC 22 - REFRIGERANT SYSTEM AIR COOLED - SISTEMA REFRIGERANTE RAFFR. AD ARIA
CIRCUIT FRIGORIFIQUE REFROID. PAR AIR - LUFTGEKÜHLT GEFRIERSYSTEM

| ITEM NO POS NO REP. NO REF. NO | PART NO CODICE REFERENCE STUECK NR | DESCRIPTION | DESCRIZIONE | DESIGNATION | BESCHREIBUNG |
|-----------------------------------------|---------------------------------------------|------------------------------------------|-----------------------------------------------------|------------------------------------------------|----------------------------------------|
| 1 | 670097 08 | COMPRESSOR | COMPRESSORE | COMPRESSEUR | KOMPRESSOR |
| 2 | 620167 29 | START CAPACITOR | CONDENSATORE D'AVVIAMENTO | CAPACITE DE DEMARRAGE | START CONDENSATOR |
| 3 | 620058 65 | PROTECTOR | PROTETTORE | PROTECTEUR | SCHUTZGERAT |
| 4 | 620057 35 | RELAY | RELE' | RELAIS | RELAIS |
| 5 | 650109 00 | VALVE BODY | CORPO VALVOLA | CORPS DE VANNE | VENTILGEHAUSE |
| 6 | 670012 00 | VALVE PISTON | PISTONCINO VALVOLA | PISTON | VENTILKOLBEN |
| 7 | 650106 00 | VALVE CAP | CAPPUCCIO VALVOLA | CAPUCHON DE VANNE | VENTILKLAPPE |
| 8 | 620419 02 620419 32 | FAN MOTOR FAN BLADE | MOTOVENTILATORE VENTOLA | MOTO-VENTILATEUR HELICE | LÜFTERMOTOR FLUGEL |
| 9 | 620285 00 | AIR COOLED CONDENSER | CONDENSATORE AD ARIA | CONDENSEUR | KONDENSATOR |
| 10 | 630003 05 | DRIER | FILTRO DEUMIDIFICATORE | FILTRE DESHYDRATEUR | TROCKNER |
| 11 | 630137 00 | MECHANICAL FILTER | FILTRO MECCANICO | FILTRE MECANIQUE | MECHANISCHFILTERN |
| 12 | 620306 48 620306 14 | HOT GAS VALVE COIL HOT GAS VALVE BODY | BOBINA VALVOLA GAS CALDO CORPO VALVOLA GAS CALDO | BOBINE VANNE GAZ CHAUD CORP VANNE GAZ CHAUD | HEISSGAZ VENTIL SPULE VENTILGEHAUSE |
| 13 | 784478 00 | EVAPORATOR ASSY | ASSIEME EVAPORATORE | ENS. EVAPORATEUR | VERDAMPFER |
| 14 | 784444 07 | ACCUMULATOR ASSY | ASSIEME ACCUMULATORE | ENS. ACCUMULATEUR | SAMMLER UND SAUGLEITUNGEN |
| | | | | | |



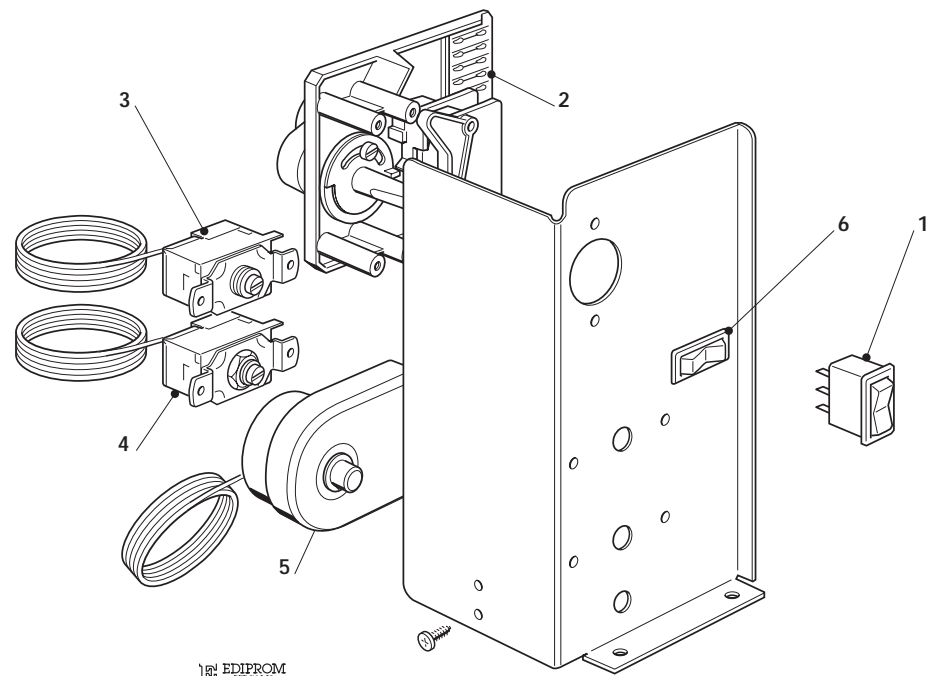
KGCW 22 - REFRIGERANT SYSTEM WATER COOLED - SISTEMA REFRIGERANTE RAFFR. AD ACQUA
CIRCUIT FRIGORIFIQUE REFROID. PAR EAU - WASSERGEKÜHLT GEFRIERSYSTEM

| ITEM NO POS NO REP. NO REF. NO | PART NO CODICE REFERENCE STUECK NR | DESCRIPTION | DESCRIZIONE | DESIGNATION | BESCHREIBUNG |
|-----------------------------------------|---------------------------------------------|------------------------------------------|-----------------------------------------------------|------------------------------------------------|----------------------------------------|
| 1 | 670097 08 | COMPRESSOR | COMPRESSORE | COMPRESSEUR | KOMPRESSOR |
| 2 | 620167 29 | START CAPACITOR | CONDENSATORE D'AVVIAMENTO | CAPACITE DE DEMARRAGE | START KONDENSATOR |
| 3 | 620058 65 | PROTECTOR | PROTETTORE | PROTECTEUR | SCHUTZ GERAT |
| 4 | 620057 35 | RELAY | RELE' | RELAIS | RELAIS |
| 5 | 650109 00 | VALVE BODY | CORPO VALVOLA | CORPS DE VANNE | VENTILGEHAUSE |
| 6 | 670012 00 | VALVE PISTON | PISTONCINO VALVOLA | PISTON | VENTILKOLBEN |
| 7 | 650106 00 | VALVE CAP | CAPPUCCIO VALVOLA | CAPUCHON DE VANNE | VENTILKLAPPE |
| 8 | 620389 00 | WATER COOLED CONDENSER | CONDENSATORE ACQUA | CONDENSEUR A EAU | WASSER KONDENSATOR |
| 9 | 620075 05 | PRESSURE CONTROL | PRESSOSTATO | PRESSOSTAT | PRESSOSTAT |
| 10 | 630003 05 | DRIER | FILTRO DEUMIDIFICATORE | FILTRE DESHYDRATEUR | TROCKNER |
| 11 | 630137 00 | MECHANICAL FILTER | FILTRO MECCANICO | FILTRE MECANIQUE | MECHANISCHFILTERN |
| 12 | 620306 48 620306 14 | HOT GAS VALVE COIL HOT GAS VALVE BODY | BOBINA VALVOLA GAS CALDO CORPO VALVOLA GAS CALDO | BOBINE VANNE GAZ CHAUD CORP VANNE GAZ CHAUD | HEISSGAZ VENTIL SPULE VENTILGEHAUSE |
| 13 | 784478 00 | EVAPORATOR ASSY | ASSIEME EVAPORATORE | ENS. EVAPORATEUR | VERDAMPFER |
| 14 | 784444 07 | ACCUMULATOR ASSY | ASSIEME ACCUMULATORE | ENS. ACCUMULATEUR | SAMMLER UND SAUGLEITUNGEN |
| 15 | 281900 01 | PLASTIC TUBE - PER METER | TUBO PVC - PER METRO | TUYAU EN PLASTIQUE - POUR MT. | PLASTIK ROHR - PRO METER |
| 16 | 281900 01 | PLASTIC TUBE - PER METER | TUBO PVC - PER METRO | TUYAU EN PLASTIQUE - POUR MT. | PLASTIK ROHR - PRO METER |
| 17 | 742135 00 | WATER DRAIN FITTING | RACCORDO SCARICO ACQUA | RACCORD EVACUATION EAU | WASSERABFLUSSANSCHLUSSE |
| 18 | 650105 70 | WATER INLET VALVE | ELETTROVALVOLA DOPPIA | VANNE ARRIVÉE EAU | ELEKTROVENTIL |
| | | | | | |



KG 22 - WATER SYSTEM - CIRCUITO IDRAULICO - CIRCUIT HYDRAULIQUE - WASSERSYSTEM

| ITEM NO POS NO REP. NO REF. NO | PART NO CODICE REFERENCE STUECK NR | DESCRIPTION | DESCRIZIONE | DESIGNATION | BESCHREIBUNG |
|-----------------------------------------|---------------------------------------------|--------------------------------------------------------------------|-----------------------------------------------------|------------------------------------------------------------------------|------------------------------------------------------------|
| 1 | 650105 66 650105 70 | WATER INLET VALVE - AIR COOLED WATER INLET VALVE - WATER COOLED | ELETTROVALVOLA INGR. ACQUA ELETTROVALVOLA DOPPIA | ELECTROVANNE ARR. EAU - REFR. AIR ELECTROVANNE ARR. EAU - REFR. EAU | WASSEREINLAUFVENTIL - LUFT WASSEREINLAUFVENTIL - WASSER |
| 2 | 281900 01 | PLASTIC TUBE - PER METER | TUBO INGRESSO ACQUA | TUYAU EN PLASTIQUE - POUR MT. | PLASTIK ROHR - PRO METER |
| 3 | 793172 00R | WATER INLET PIPE | TUBO INGR. ACQUA | TUYAU ENTREE EAU | WASSEREINLAUFROHR |
| 4 | 724331 00 | METAL BRACKET | SUPPORTO POMPA INOX | SUPPORT METALLIQUE | METALTRAEGER |
| 5 | 620433 00 | WATER PUMP | POMPA | POMPE A EAU | WASSER PUMPE |
| 6 | 610150 03 | PUMP INLET WATER PIPE | TUBO MANDATA POMPA | TUYAU DE REFOULEMENT POMPE | PUMPENABFLUSSSCHLAUCH |
| 7 | 650665 18 | SPRAY BAR | TUBO SPRUZZATORE | COLLECTEUR | KOLLEKTOR |
| 8 | 660558 00 | SPRAY JET | SPRUZZATORI | GICLEURS | SPRÜHDÜSEN |
| 9 | 660557 00 | PLUG | UGELLO SPRUZZATORE | BOUCHON POUR COLLECTEUR | STOPFEN |
| 10 | 660698 01 | OVERFLOW STAND PIPE | TUBO DI TROPPO PIENO | TROP PLEIN | UEBERLAUFROHR |
| 11 | 660219 01 | DRAIN FITTING | SCARICO CELLA | TUYAU EVACUATION | ABFLUSSROHR |
| 12 | 640134 00 | O-RING | O-RING | JOINT TORIQUE | SIMMER RING |
| 13 | 660211 00 | DRAIN FILTER | FILTRO SCARICO CELLA | FILTRE CABINE STOCKAGE | BEHÄLTER ABLAUF FILTER |
| 14 | 610191 00 | OVERFLOW DRAIN TUBE | TUBO SCARICO TROPPO PIENO | TUYAU VIDANGE TROP PLAIN | BEHÄLTER ABLAUF |
| 15 | 610148 09 | STORAGE BIN DRAIN TUBE | TUBO SCARICO CONTENITORE | TUYAU VIDANGE CONTENEUR | BEHÄLTERAUSLAUFSCHAUCH |
| 16 | 660224 00 | WATER DRAIN FITTING | RACCORDO A "T" | RACCORD EVACUATION EAU | WASSERABFLUSSANSCHLUSSE |
| 17 | 660535 00 | PLASTIC RING NUT | GHIERA | COLLIER DE SERRAGE EN PLAST. | PLASTIKRING MUTTER |
| 21 | 650499 00 | METAL CLAMP | FASCETTA STRINGITUBO | COLLIER METALLIQUE | METALLFESTKLEMMEN |
| | | | | | |



EDIPROM
BERGAMO
0106.04

| KG 22 - CONTROL BOX - SCATOLA DI CONTROLLO - BOITE ELECTRIQUE - SCHALTSCHRANK | | | | | |
|-------------------------------------------------------------------------------|---------------------------------------------|-----------------------|-------------------------|------------------------|------------------------|
| ITEM NO POS NO REP. NO REF. NO | PART NO CODICE REFERENCE STUECK NR | DESCRIPTION | DESCRIZIONE | DESIGNATION | BESCHREIBUNG |
| 1 | 620442 03 | SWITCH | INTERRUTTORE LUMINOSO | INTERRUPTEUR LUMINEUX | SCHALTER |
| 2 | 620441 00 | TIMER | TIMER | MINUTERIE | TIMER |
| 3 | 620201 00 | EVAPORATOR THERMOSTAT | TERMOSTATO EVAPORATORE | THERMOSTAT EVAPORATEUR | VERDAMPFERTHERMOSTAT |
| 4 | 630005 00 | BIN THERMOSTAT | TERMOSTATO CONTENITORE | THERMOSTAT CONTENEUR | BEHÄLTER THERMOSTAT |
| 5 | 620443 02 | THERMOSTAT - SAFETY | TERMOSTATO DI SICUREZZA | THERMOSTAT DE SECURITÉ | SICHERHEITS THERMOSTAT |
| 6 | 620442 02 | SWITCH | COMMUTATORE UNIPOLARE | INTERRUPTEUR | UMSCHALTER |
| | | | | | |

KG 22 - COMPRESSOR CHART - TABELLA COMPRESSORI - TABLEAU COMPRESSEURS - KOMPRESSOR KARTE

| MODEL MODELLO MODELE MODELL | VOLTS VOLTAGGIO TENSION SPANNUNG | COMPRESSOR MODEL MODELLO COMPRESSORE TYPE DU COMPRESSEUR KOMPRESSOR TYP | COMPRESSOR ASSY ASS. COMPRESSORE ENS. COMPRESSEUR NUR KOMPRESSOR | RELAY RELE' RELAIS RELAIS | PROTECTOR PROTETTORE PROTECTEUR SCHUTZGERAT | START CAPACITOR CAPACITA' D'AVV. CAPACITE DE DEMARR. START KONDENSATOR |
|--------------------------------------|-------------------------------------------|----------------------------------------------------------------------------------|---------------------------------------------------------------------------|------------------------------------|------------------------------------------------------|---------------------------------------------------------------------------------|
| KG 22 - J | 115/60/1 | — | — | — | — | — |
| KG 22 - J | 230/60/1 | — | — | — | — | — |
| KG 22 - J | 230/50/1 | GL 80 TB | 670097 08 | 620057 35 | 620058 65 | 620167 29 |

KG 22 - ELECTRIC COMPONENTS CHART - TABELLA COMPONENTI ELETTRICI TABLEAU COMPOSANTS ELECTRIQUE - ELEKTRISCHEKARTE

| MODEL MODELLO MODELE MODELL | VOLTS TENSIONE TENSION SPANNUNG | WATER PUMP POMPA POMPE A EAU WASSER PUMPE | FAN MOTOR ONLY MOTORE VENTILATORE MOTEUR VENTILATEUR LUFTER MOTOR | WATER INLET VALVE VALVOLA INGR. ACQUA V.E.M. ARRIVEE' EAU WASSEREIN. VENTIL | HOT GAS VALVE VALVOLA GAS CALDO V.E.M. GAZ CHAUDS HEISSGAZ VENTIL | TIMER TIMER MINUTERIE TIMER |
|--------------------------------------|------------------------------------------|----------------------------------------------------|----------------------------------------------------------------------------|--------------------------------------------------------------------------------------|----------------------------------------------------------------------------|--------------------------------------|
| KG 22 - J | 115/60/1 | — | — | — | — | — |
| KG 22 - J | 230/60/1 | — | — | — | — | — |
| KG 22 - J | 230/50/1 | 620433 00 | 620419 02 | 650105 66 / 650105 70 (AIR / WATER) | 620306 48 | 620441 00 |