

PizzaGroup



**EXPLODED VIEW
ROLLING MACHINES**

EXPLODED DRAWING and LIST OF SPARE PARTS

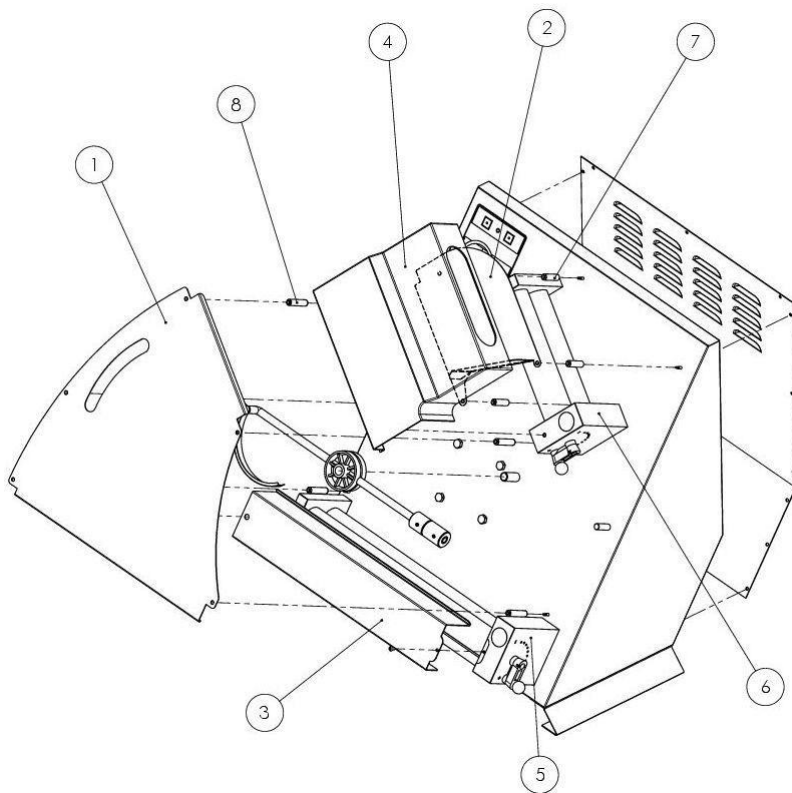


Figure 1

Figure 1 - Roll Mach 32 Bill Release 2012 - P05RO24024

Code	Pos.	Description	Q.ty
1	S47IE54006	ROLL MACH RM 32 A Release 2012 LOWER STEEL SLIDE	1
2	S47SR54001	ROLL MACH RM 32 A UPPER STEEL SLIDE	1
3	S61IE54018	ROLL MACH RM 32 A Release 2012 REAR GUARD	1
4	A90SU78019	RM32A Release 2012 UPPER GUARD	1
5	S51RL54027	ROLL MACH RM 32 A Release 2012 LOWER ROLLER UNIT	1
6	S51RL54028	ROLL MACH RM 32 A Release 2012 UPPER ROLLER UNIT	1
7	S56SR54001	Ø 10x37 ROLL MACH UPPER SPACER	3
8	S56IE54001	Ø 10x46 ROLL MACH LOWER SPACER	4

Figure 1 - Roll Mach 42A Release 2012 - P05RO24025

Code	Pos.	Description	Q.ty
1	S47IE54007	ROLL MACH RM 42 A LOWER STEEL SLIDE	1
2	S47SR54003	ROLL MACH RM 42 A UPPER STEEL SLIDE	1
3	S61IE54020	ROLL MACH RM 42 A LOWER GUARD	1
4	A90SU78020	UPPER GUARD RM32A	1
5	S51RL54031	ROLL MACH RM 42 A LOWER ROLLER UNIT	1
6	S51RL54032	ROLL MACH RM 42 A UPPER ROLLER UNIT	1
7	S56SR54001	Ø 10x37 ROLL MACH UPPER SPACER	3
8	S56IE54001	Ø 10x46 ROLL MACH LOWER SPACER	4

Figure 1 - Roll Mach 42 TA Release 2012 - P05RP24015

Code	Pos.	Description	Q.ty
1	S47IE54013	ROLL MACH RM 42 TA LOWER STEEL SLIDE	1
2	S47SR54006	ROLL MACH RM 42 TA UPPER STEEL SLIDE	1
3	S61IE54020	ROLL MACH RM 42 A Release 2012 REAR GUARD	1
4	A90SU78021	RM42 TA 2012 UPPER GUARD	1
5	S51RL54031	ROLL MACH RM 42 A Release 2012 LOWER ROLLER UNIT 42 A Release 2012 red color RAL 3020	1
6	S51RL54009	UPPER ROLLER UNIT -P40T-P40TA P45HTA (RED)	1
7	S56SR54001	Ø 10x37 ROLL MACH UPPER SPACER	4
8	S56IE54001	Ø 10x46 ROLL MACH LOWER SPACER	4

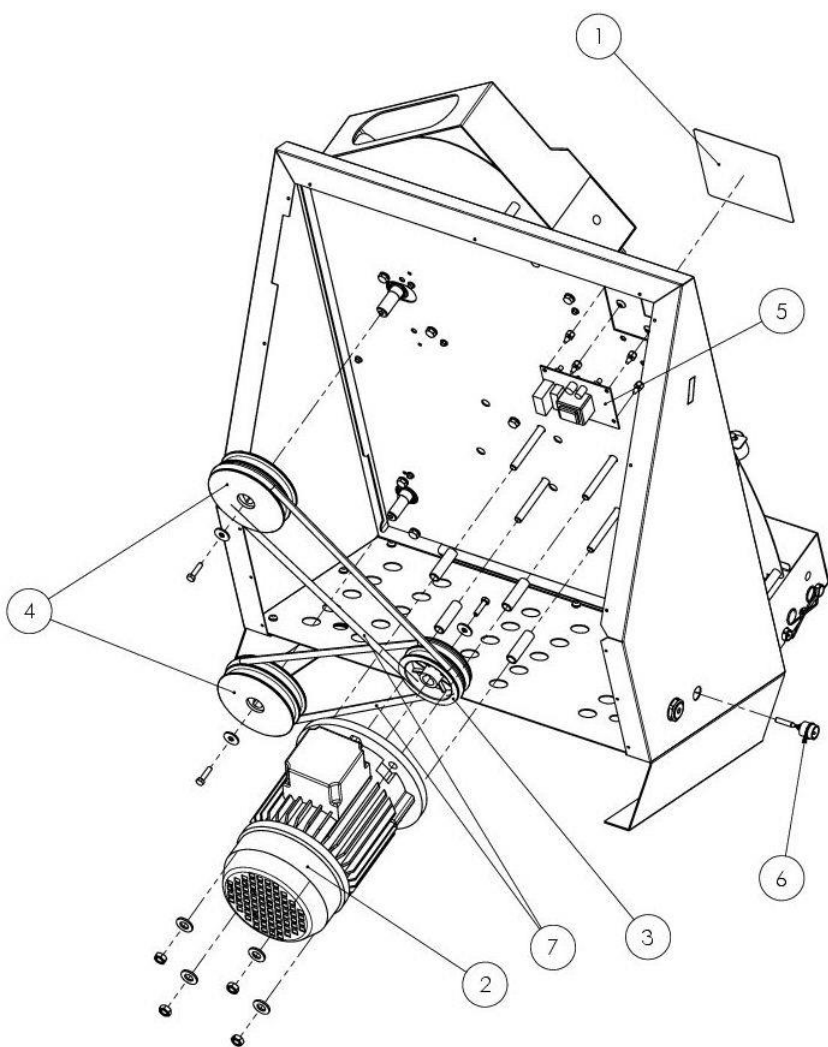


Figure 2

Figure 2 - Roll Mach 32 Bill Release 2012 - P05RO24024

Code	Pos.	Description	Q.ty
1	A93OL78013	CONTROL UNIT LABEL RM PIZZAGROUP 2012	1
2	A87MR55020	MOTOR 110/66 H70 220/50 4P CLF 12.5 µF	1
3	A90UL78002	PLASTIC MOTOR PULLEY ROLLING MACHINE	1
4	A90UL78001	PLASTIC REDUCTION PULLEY ROLLING MACHINE	2
5	A88CY78001	12V "2000" ROLL MACH CONTROL PANEL	1
6	A87AZ71001	Ø 15 PEDAL JACK WITH CABLE	OPTIONAL
7	A90KI78009	ROLLING MACHINE Ø 8x540 BELT	2

Figure 2 - Roll Mach 42A Release 2012 - P05RO24025

Code	Pos.	Description	Q.ty
1	A93OL78013	CONTROL UNIT LABEL RM PIZZAGROUP 2012	1
2	A87MR55020	MOTOR 110/66 H70 220/50 4P CLF 12.5 µF	1
3	A90UL78002	PLASTIC MOTOR PULLEY ROLLING MACHINE	1
4	A90UL78001	PLASTIC REDUCTION PULLEY ROLLING MACHINE	2
5	A88CY78001	12V "2000" ROLL MACH CONTROL PANEL	1
6	A87AZ71001	Ø 15 PEDAL JACK WITH CABLE	OPTIONAL
7	A90KI78001	BELT Ø 8x784-P40A-P45A-P40TAE P40AE- P40TA-P45TA-P45HTA	2

Figure 2 - Roll Mach 42 TA Release 2012 - P05RP24015

Code	Pos.	Description	Q.ty
1	A93OL78013	CONTROL UNIT LABEL RM PIZZAGROUP 2012	1
2	A87MR55020	MOTOR 110/66 H70 220/50 4P CLF 12.5 µF	1
3	A90UL78002	PLASTIC MOTOR PULLEY ROLLING MACHINE	1
4	A90UL78001	PLASTIC REDUCTION PULLEY ROLLING MACHINE	2
5	S63CD54002	12V "2000" ROLL MACH CONTROL PANEL	1
6	A87AZ71001	Ø 15 PEDAL JACK WITH CABLE	OPTIONAL
7	A90KI78002	BELT Ø 8x680 P30-P40-P30T-P40T- M42A	2

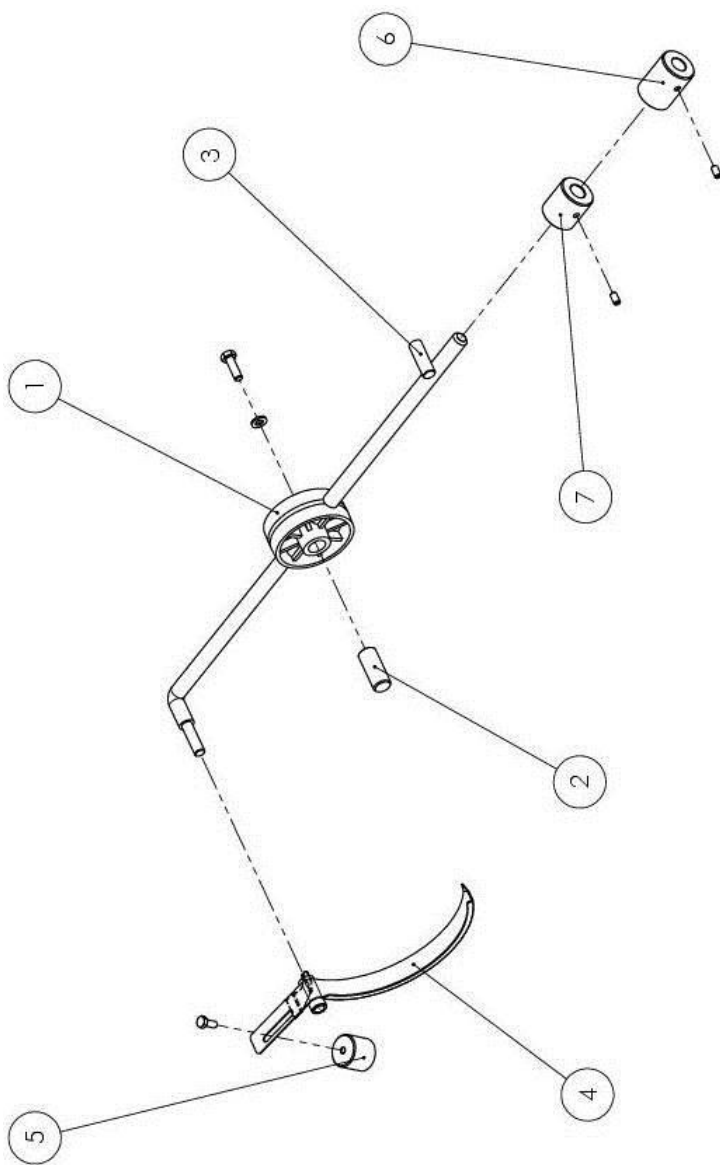


Figure 3

Figure 3 - Roll Mach 32A GROUP UNIT Release 2012 - P05RO24024

Code	Pos.	Description	Q.ty
1	A90BI54001	P30-P30A SCALE UNIT	1
2	S69FS55001	Ø 14x29,5 M6 P30-P30A-P40-P40A-P35A-P45A STAINLESS STEEL PIN SCALE	1
3	S69FE54001	Ø 10x30 (DERLIN) P30-P30A-P40-P40A-P35A-P45AP35A RETAINER PIN BALANCE	1
4	S66BL54001	ROLL MACH RM 32 A LIFTING BEAM ASSEMBLY	1
5	S54PX54005	Ø 25x17 ROLL MACH RM 32 COUNTERWEIGHT SCALE	1
6	S54PX54003	Ø 28x38 P30-P30A COUNTERWEIGHT SCALE	1
7	/	/	/

Figure 3 - Roll Mach 42A SCALE GROUP Release 2012 - P05RO24025

Code	Pos.	Description	Q.ty
1	A90BI54002	P40-P40A SCALE UNIT	1
2	S69FS55001	Ø 14x29,5 M6 P30-P30A-P40-P40A-P35A-P45A STAINLESS STEEL PIN SCALE	1
3	S69FE54001	Ø 10x30 (DERLIN) P30-P30A-P40-P40A-P35A-P45A-P35A RETAINER PIN BALANCE	1
4	S66BL54002	ROLL MACH RM 42 A LIFTING BEAM ASSEMBLY	1
5	S79BL54001	Ø 25x23 ROLL MACH RM 42 COUNTERWEIGHT SCALE	1
6	S54PX54003	Ø 28x38 P30-P30A COUNTERWEIGHT SCALE	1
7	S54PX54004	Ø 28x38 P40-P40A-P35A COUNTERWEIGHT SCALE	1

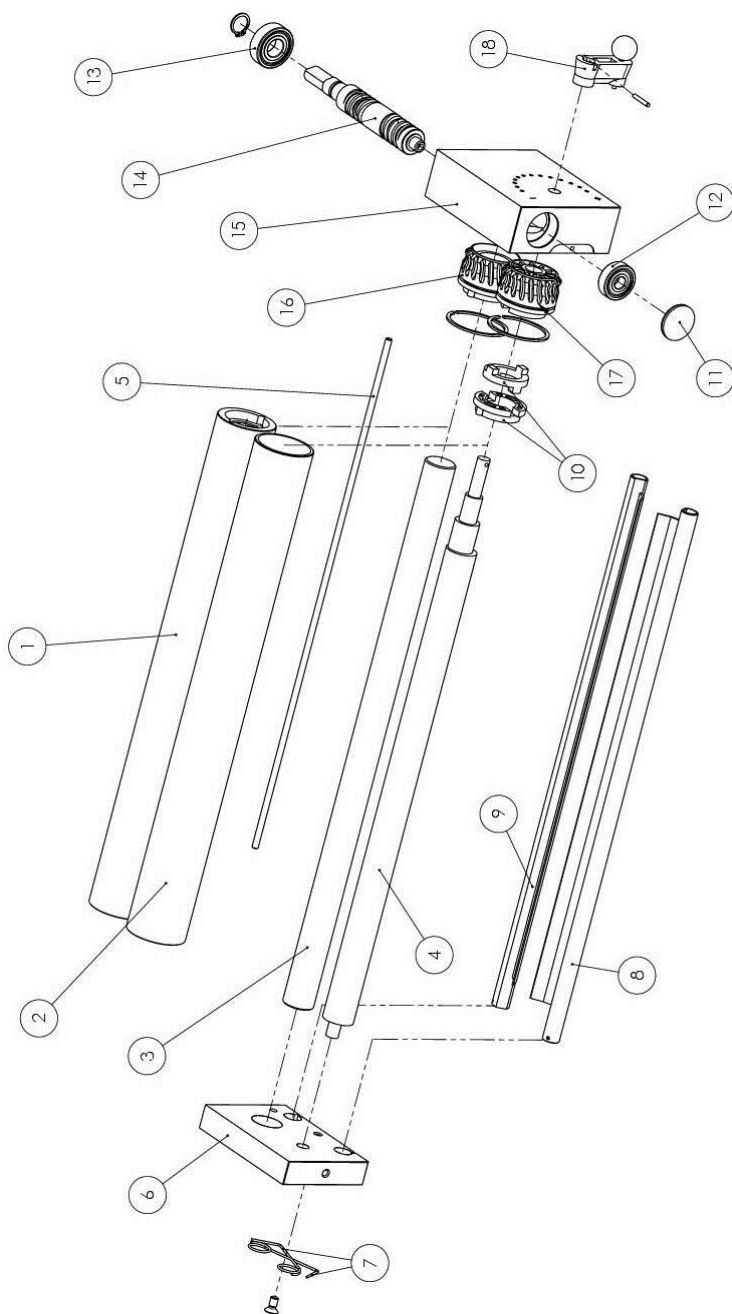


Figure 4

Figure 4 - Lower roller unit S51RL54027 RM32A

Code	Pos.	Description	Q.ty
1	S75CD54009	LOWER CYLINDRICAL ROLLER P32-P32A-P32AE-P32T-P32TA "2009"	1
2	S75EC54009	LOWER CYLINDRICAL ROLLER P32-P32A-P32AE-P32T-P32TA "2009"	1
3	S63CD54006	ROLL MACH RM 32 A LOWER CYLINDRICAL SHAFT	1
4	S63EC54006	ROLL MACH RM 32 A LOWER ECCENTRIC SHAFT	1
5	S61RL54005	Ø 5x334 ROLL MACH RM 32 STEEL ROD	1
6	S52IE54006	ROLL MACH RM Release 2012 LOWER SMALL SUPPORT	1
7	A86ME30003	ROLLING MACHINE PIZZA DOUGH SCRAPER SPRING Release 2012	2
8	S43RA54001	ROLL MACH RM 32 A FRONT ALUMINUM PIZZA DOUGH SCRAPER	1
9	S43RA54002	ROLL MACH RM 32 A BACK ALUMINUM PIZZA DOUGH SCRAPER	1
10	S51GN54005	ROLL MACH MALE/FEMALE GROUP JOINT (RED)	1
11	A90TP78003	ROLL MACH Release 2012 RED RAL 3020 CAP (U-02)	1
12	A89CK78001	6200 ZZ BEARING	1
13	A89CK78002	6202 ZZ BEARING	1
14	S63TR54009	CYLINDRICAL SCREW ROLL MACH RM (ROLLS CENTER DISTANCE OF 50)	1
15	S52RD54010	ROLL MACH RM Release 2012 LOWER REDUCTION GEAR SUPPORT	1
16	A90IG78002	ROLLING MACHINE "2008" CYLINDRICAL GEAR	1
17	A90IG78001	ECCENTRIC GEAR ROLLING MACHINE "2008"	1
18	S51GN54001	PIZZA DOUGH ROLL MACH THICKNESS ADJUSTMENT GROUP (RED COLOUR)	1

Figure 4 - Upper roller unit S51RL54028 RM32A

Code	Pos.	Description	Q.ty
1	S75CD54001	P30-P30A-P30AE-P30T-P30TA UPPER CYLINDRICAL ROLLER	1
2	S75EC54001	P30-P30A-P30AE-P30T-P30TA UPPER ECCENTRIC ROLLER	1
3	S63CD54001	P30-P30A-P30AE-P30T-P30TA UPPER CYLINDRICAL SHAFT	1
4	S63EC54001	P30-P30A-P30AE-P30T-P30TA UPPER ECCENTRIC SHAFT	1
5	/	/	/
6	S52SR54005	ROLL MACH RM Release 2012 UPPER SMALL SUPPORT	1
7	/	/	/
8	/	/	/
9	/	/	/
10	S51GN54005	ROLL MACH MALE/FEMALE GROUP JOINT (RED)	1
11	A90TP78003	ROLL MACH Release 2012 RED RAL 3020 CAP (U-02)	1
12	A89CK78001	6200 ZZ BEARING	1
13	A89CK78002	6202 ZZ BEARING	1
14	S63TR54009	CYLINDRICAL SCREW ROLL MACH RM (ROLLS CENTER DISTANCE OF 50)	1
15	S52RD54011	ROLL MACH RM Release 2012 UPPER REDUCTION GEAR SUPPORT	1
16	A90IG78002	ROLLING MACHINE "2008" CYLINDRICAL GEAR	1
17	A90IG78001	ECCENTRIC GEAR ROLLING MACHINE "2008"	1
18	S51GN54001	PIZZA DOUGH ROLL MACH THICKNESS ADJUSTMENT GROUP (RED COLOUR)	1

Figure 4 - Lower roller unit S51RL54031 RM42A - RM42TA

Code	Pos.	Description	Q.ty
1	S75CD54008	LOWER CYLINDRICAL ROLLER P40-P40A-P40AE-P40T-P40TA-P40TAE	1
2	S75EC54007	LOWER ECCENTRIC ROLLER P40-P40A-P40AE-P40T-P40TA-P40TAE	1
3	S63CD54002	LOWER CYLINDRICAL SHAFT P40-P40A-P40T-P40TA-P40TAE-P40AE	1
4	S63EC54004	LOWER ECCENTRIC SHAFT P40-P40A-P40T-P40TA-P40TAE-P40AE-P40TA	1
5	S61RL54003	STEEL ROD D.5X438	1
6	S52IE54006	ROLL MACH RM Release 2012 LOWER SMALL SUPPORT	1
7	A86ME30003	Release 2012 ROLLING MACHINE PIZZA DOUGH SCRAPER SPRING	2
8	S43RA54005	FRONT ALUMINUM PIZZA DOUGH SCRAPER "2000" (0.13 KG) P40-P40A-P40AE-P40T-P40TA-P40TAE	1
9	S43RA54006	BACK ALUMINUM PIZZA DOUGH SCRAPER "2000" (0.13 KG) P40-P40A-P40AE-P40T-P40TA-P40TAE	1
10	S51GN54005	ROLL MACH MALE/FEMALE GROUP JOINT (RED)	1
11	A90TP78003	ROLL MACH Release 2012 RED RAL 3020 CAP (U-02)	1
12	A89CK78001	6200 ZZ BEARING	1
13	A89CK78002	6202 ZZ BEARING	1
14	S63TR54009	CYLINDRICAL SCREW ROLL MACH RM (ROLLS CENTER DISTANCE OF 50)	1
15	S52RD54010	ROLL MACH RM Release 2012 LOWER REDUCTION GEAR SUPPORT	1
16	A90IG78002	ROLLING MACHINE "2008" CYLINDRICAL GEAR	1
17	A90IG78001	ROLLING MACHINE "2008" ECCENTRIC GEAR	1
18	S51GN54001	PIZZA DOUGH ROLL MACH THICKNESS ADJUSTMENT GROUP (RED COLOUR)	1

Figure 4 - Upper roller unit S51RL54032 RM42A

Code	Pos.	Description	Q.ty
1	S75CD54003	UPPER CYLINDRICAL ROLLER P35A-P35TA-P40-P40A-P40AE-P45A	1
2	S75EC54003	UPPER ECCENTRIC ROLLER P35A-P35TA-P40-P40A-P40AE-P45A	1
3	S63CD54005	UPPER CYLINDRICAL SHAFT P40-P40A-P40AE-P45A-P35A-P35TA	1
4	S63EC54002	UPPER ECCENTRIC SHAFT P35TA-P40-P40A-P40AE-P45A-P45TA	1
5	/	/	/
6	S52SR54005	ROLL MACH RM Release 2012 UPPER SMALL SUPPORT	1
7	/	/	/
8	/	/	/
9	/	/	/
10	S51GN54005	ROLL MACH MALE/FEMALE GROUP JOINT (RED)	1
11	A90TP78003	ROLL MACH Release 2012 RED RAL 3020 CAP (U-02)	1
12	A89CK78001	6200 ZZ BEARING	1
13	A89CK78002	6202 ZZ BEARING	1
14	S63TR54009	CYLINDRICAL SCREW ROLL MACH RM (ROLLS CENTER DISTANCE OF 50)	1
15	S52RD54011	ROLL MACH RM Release 2012 UPPER REDUCTION GEAR SUPPORT	1
16	A90IG78002	ROLLING MACHINE CYLINDRICAL GEAR "2008"	1
17	A90IG78001	ECCENTRIC GEAR ROLLING MACHINE "2008"	1
18	S51GN54001	PIZZA DOUGH ROLL MACH THICKNESS ADJUSTMENT GROUP (RED COLOUR)	1

Figure 4 - Upper roller unit S51RL54009 RM42TA

Code	Pos.	Description	Q.ty
1	S75CD54004	UPPER CYLINDRICAL ROLLER P40T-P40TA-P40TAE-P45TA-P45HTA	1
2	S75EC54004	UPPER ECCENTRIC ROLLER P40T-P40TA-P40TAE-P45TA-P45HTA	1
3	S63CD54003	ROLLING MACHINE LOWER CYLINDRICAL SHAFT	1
4	S63EC54003	LOWER ECCENTRIC SHAFT	1
5	/	/	/
6	S52SR54007	SMALL UPPER SUPPORT 42 T	1
7	/	/	/
8	/	/	/
9	/	/	/
10	S51GN54005	ROLL MACH MALE/FEMALE GROUP JOINT (RED)	1
11	A90TP78001	RED ROLL MACH 3020 (DIS.002.25.00 AP19)) CAP	1
12	A89CK78001	6200 ZZ BEARING	1
13	A89CK78002	6202 ZZ BEARING	1
14	S63TR54010	CYLINDRICAL SCREW ROLL MACH RM (ROLLS CENTER DISTANCE OF 60)	1
15	S52RD54014	UPPER REDUCTION GEAR SUPPORT 42 T	1
16	A90IG78002	ROLLING MACHINE "2008" CYLINDRICAL GEAR	1
17	A90IG78001	ECCENTRIC GEAR ROLLING MACHINE "2008"	1
18	S51GN54001	PIZZA DOUGH ROLL MACH THICKNESS ADJUSTMENT GROUP (RED COLOUR)	1

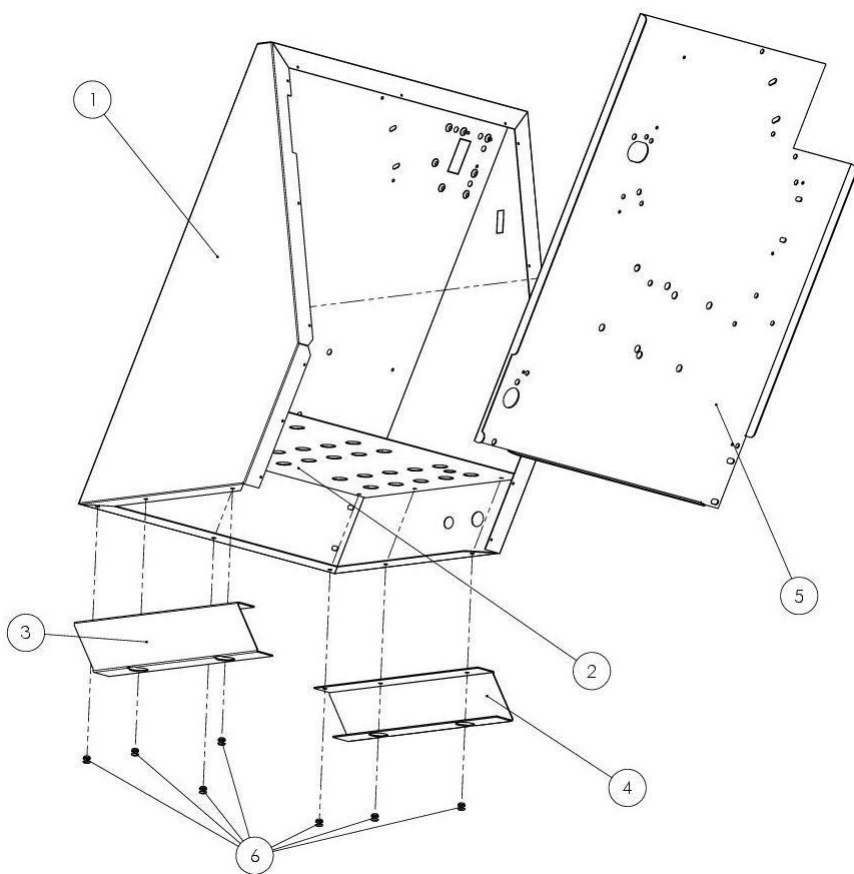


Figure 5

Figure 5 - Enclosure RM32A P05RO24024

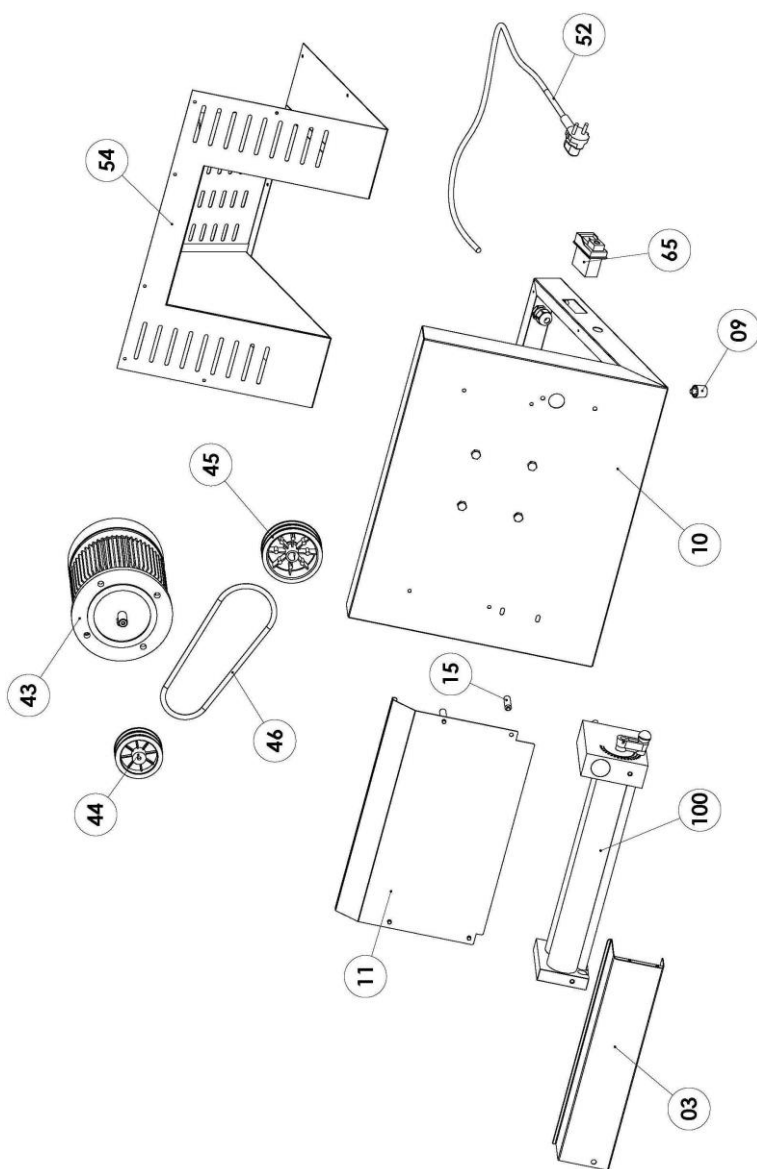
Code	Pos.	Description	Q.ty
1	S39SC54035	ROLL MACH RM 32 A EMCLOSURE Release 2012	1
2	S31DL54018	ROLL MACH RM 32 A GALVANISED SOLE	1
3	S49PA54016	RIGHT FOOT ROLL MACH Release 2012	1
4	S49PA54018	LEFT FOOT ROLL MACH Release 2012	1
5	S67DL54021	ROLL MACH RM 32 A SUBPLATE Release 2012	1
6	/	Stainless steel rivet 4.8x10 roundheaded	7

Figure 5 - Enclosure RM32A P05RO24025

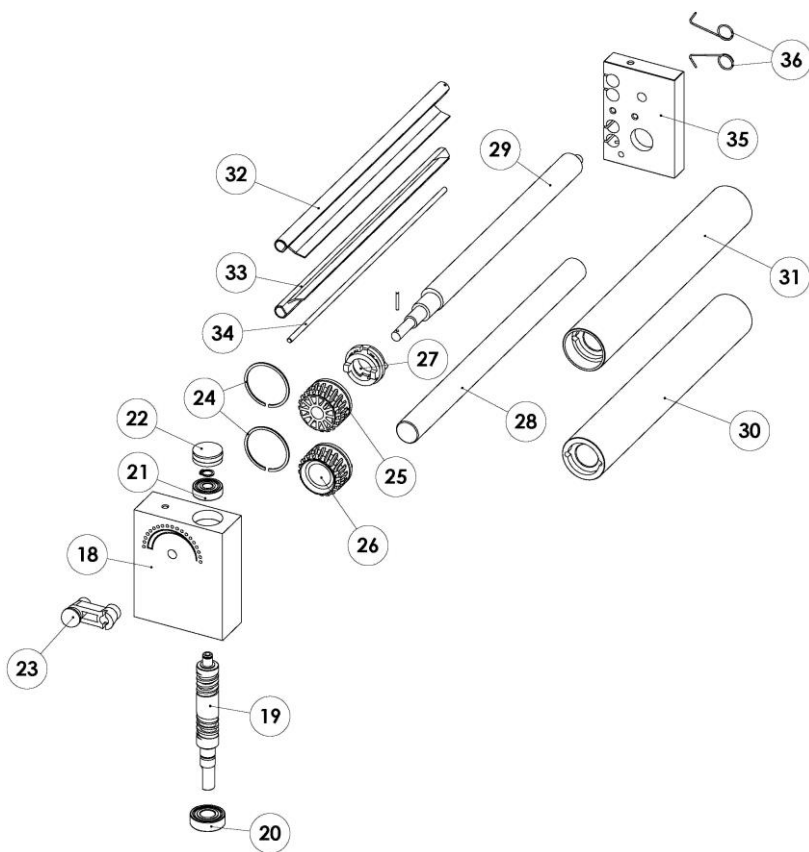
Code	Pos.	Description	Q.ty
1	S39SC54033	ROLL MACH RM 42 A EMCLOSURE Release 2012	1
2	S31DL54022	ROLL MACH RM 42 A GALVANISED SOLE	1
3	S49PA54016	RIGHT FOOT ROLL MACH Release 2012	1
4	S49PA54018	LEFT FOOT ROLL MACH Release 2012	1
5	S67DL54036	ROLL MACH RM42A-RM42TA SUBPLATE Release 2012	1
6	/	Stainless steel rivet 4.8x10 roundheaded	7

Figure 5 - Enclosure RM42TA P05RP24015

Code	Pos.	Description	Q.ty
1	S39SC54031	ROLL MACH RM 42 TA ENCLOSURE Release 2012	1
2	S31DL54022	ROLL MACH RM 42 A GALVANISED SOLE	1
3	S49PA54016	RIGHT FOOT ROLL MACH Release 2012	1
4	S49PA54018	LEFT FOOT ROLL MACH Release 2012	1
5	S67DL54036	ROLL MACH RM42A-RM42TA SUBPLATE Release 2012	1
6	/	Stainless steel rivet 4.8x10 roundheaded	7



M35A – M42A



M35A – M42A

M35A

Pos.	Code	Description
03	S61IE54022	ROLL MACH RM 35 A Release 2012 REAR GUARD
09	A90XP78001	FSD 3170-031 BLACK h CORNER FOOT RIVET 18mm
10	S39SC54010	ROLL MACH M35 STEEL ENCLOSURE
11	S47MO54003	M35 STEEL SLIDE
15	S56SR54001	Ø 10x37 ROLL MACH UPPER SPACER
18	S52RD54010	RM 2012 Release LOWER SUPPORT GEAR
19	S63TR54009	ROLL MACH RM Release 2012 GLOBOIDAL SCREW
20	A89CK78002	6202 ZZ BEARING
21	A89CK78001	6200 ZZ BEARING
22	A90TP78003	ROLL MACH Release 2012 RED RAL 3020 CAP
23	S51GN54007	PASTA ROLL MACH THICKNESS ADJUSTMENT GROUP
24	A86ME29001	ASD 48/2.2X1, 45 ROLLING MACHINE ELASTIC RING CYCLE
25	A90IG78001	ROLLING MACHINE "2008" ECCENTRIC GEAR
26	A90IG78002	ROLLING MACHINE "2008" CYLINDRICAL GEAR
27	S51GN54005	ROLL MACH MALE/FEMALE GROUP JOINT
28	S63CD54007	RM35A-M35 LOWER CYLINDRICAL SHAFT
29	S63EC54007	RM35A-M35 LOWER ECCENTRIC SHAFT
30	S75CD54010	RM35A-M35 ROLLING MACHINE LOWER CYLINDRICAL ROLLER
31	S75CD54011	RM35A-M35 ROLLING MACHINE LOWER ECCENTRIC ROLLER
32	S43RA54009	RM35A-M35 ROLLING MACHINE FRONT PIZZA DOUGH SCRAPER
33	S43RA54010	RM35A-M35 ROLLING MACHINE REAR PIZZA DOUGH SCRAPER
34	S61RL54005	Ø 5x334 ROLL MACH RM 32 STEEL ROD
35	S52IE54006	ROLL MACH RM Release 2012 LOWER SMALL SUPPORT
36	A86ME30003	Release 2012 ROLLING MACHINE PIZZA DOUGH SCRAPER SPRING
43	A87MR55020	MOTOR 110/66 H70 220/50 4P CLF 12.5 µF
44	A90UL78002	PLASTIC MOTOR PULLEY ROLLING MACHINE
45	A90UL78001	PLASTIC REDUCTION PULLEY ROLLING MACHINE
46	A90KI78009	Ø 8x540 BELT
52	A87CX64001	FEED CABLE H05VV-F 3X0,75 ART 232 LZ SG100 BIANCO 90°
54	S66CQ54004	M35 MOTOR CASING ASSEMBLY
65	A96ZN00083	KLD-28A START/STOP GREEN/RED BUTTON
100	S51RL54044	ROLL MACH RM 35 A Release 2012 LOWER ROLLER UNIT

M42A

Pos.	Code	Description
03	S61IE54020	ROLL MACH RM 42 A Release 2012 REAR GUARD
09	A90XP78001	FSD 3170-031 BLACK h CORNER FOOT RIVET 18mm
10	S39SC54023	ROLL MACH M42 STEEL ENCLOSURE
11	S47MO54001	M42 STEEL SLIDE
15	S56SR54001	Ø 10x37 ROLL MACH UPPER SPACER
18	S52RD54010	RM 2012 Release LOWER SUPPORT GEAR
19	S63TR54009	ROLL MACH RM Release 2012 GLOBOIDAL SCREW
20	A89CK78002	6202 ZZ BEARING
21	A89CK78001	6200 ZZ BEARING
22	A90TP78003	ROLL MACH Release 2012 RED RAL 3020 CAP
23	S51GN54007	PASTA ROLL MACH THICKNESS ADJUSTMENT GROUP
24	A86ME29001	ASD 48/2.2X1, 45 ROLLING MACHINE ELASTIC RING CYCLE
25	A90IG78001	ROLLING MACHINE "2008" ECCENTRIC GEAR
26	A90IG78002	ROLLING MACHINE "2008" CYLINDRICAL GEAR
27	S51GN54005	ROLL MACH MALE/FEMALE GROUP JOINT
28	S63CD54002	P40-P40A-P40T-P40TA LOWER CYLINDRICAL SHAFT
29	S63EC54004	P40-P40A-P40T-P40TA LOWER ECCENTRIC SHAFT
30	S75CD54008	P40-P40A-P40TA LOWER CYLINDRICAL ROLLER
31	S75EC54007	P40-P40A-P40TA LOWER ECCENTRIC ROLLER
32	S43RA54005	"2000" P40-P40A-P40TA FRONT ALUMINUM PIZZA DOUGH SCRAPER
33	S43RA54006	"2000" P40-P40A-P40TA REAR ALUMINUM PIZZA DOUGH SCRAPER
34	S61RL54003	Ø 5x438 ROLL MACH RM 42 STEEL ROD
35	S52IE54006	ROLL MACH RM Release 2012 LOWER SMALL SUPPORT
36	A86ME30003	Release 2012 ROLLING MACHINE PIZZA DOUGH SCRAPER SPRING
43	A87MR55020	MOTOR 110/66 H70 220/50 4P CLF 12.5 µF
44	A90UL78002	PLASTIC MOTOR PULLEY ROLLING MACHINE
45	A90UL78001	PLASTIC REDUCTION PULLEY ROLLING MACHINE
46	A90KI78002	Ø 8x680 BELT
52	A87CX64001	FEED CABLE H05VV-F 3X0,75 ART 232 LZ SG100 BIANCO 90°
54	S66CQ54001	M42 MOTOR CASING ASSEMBLY
65	A96ZN00083	KLD-28A START/STOP GREEN/RED BUTTON
100	S51RL54045	ROLL MACH RM 42 A Release 2012 LOWER ROLLER UNIT

TECHNICAL DATA

Model	Weight (Kg)	Width (mm)	Depth (mm)	Height(mm)	Power consumption(kW)	Supply Voltage (V)	Frequency (Hz)	Dough Weight (gr)	Ø Pizza (cm)
RM32A	26	430	480	590	0,37	230	50	80 ÷ 210	14÷ 31
RM42A	35	460	520	740	0,37	230	50	210 ÷ 600	26 ÷ 40
RM42TA	35	530	530	730	0,37	230	50	210 ÷ 600	26 ÷ 40
M35A	22	500	400	450	0.37	230	50	80 ÷ 400	14÷ 34
M42A	26	570	400	450	0,37	230	50	210÷600	26÷40

