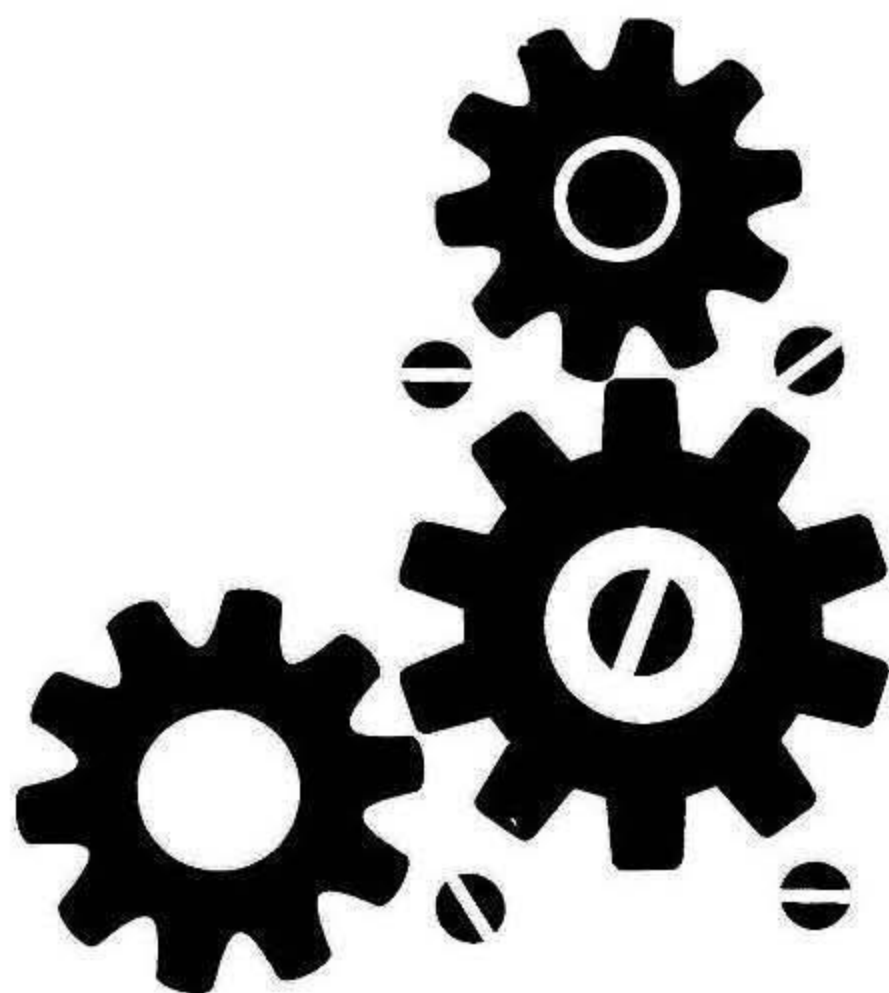


SPARE PARTS MANUAL



C 190/51 E-G-V

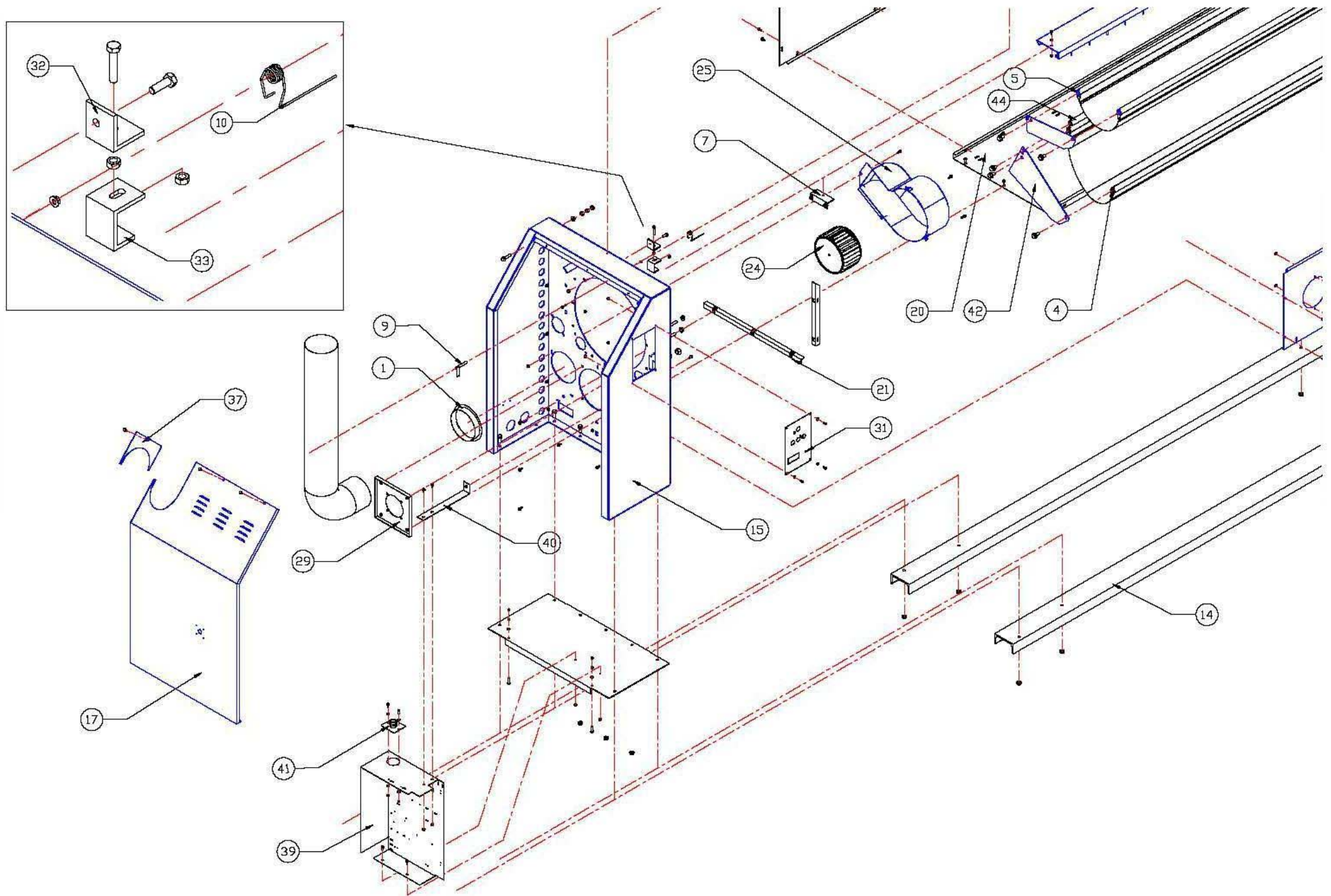
C 250/51 E-G-V

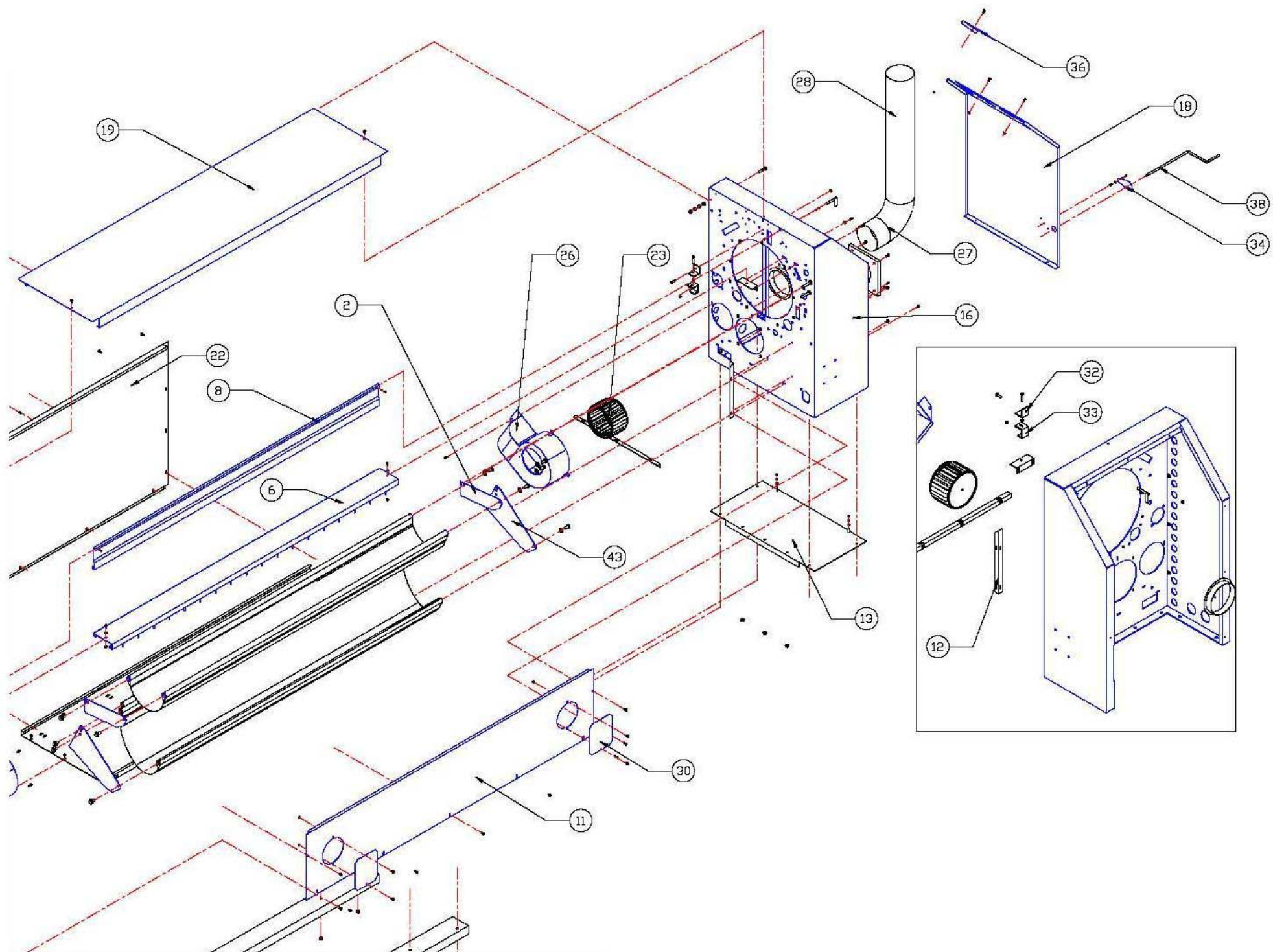
C 320/51 E-G-V

[®]
grandimpianti
Industrial Laundry Equipment

Vers. 12

VIA MASIERE, 211/C
32037 - SOSPIROLO (BL)
ITALY



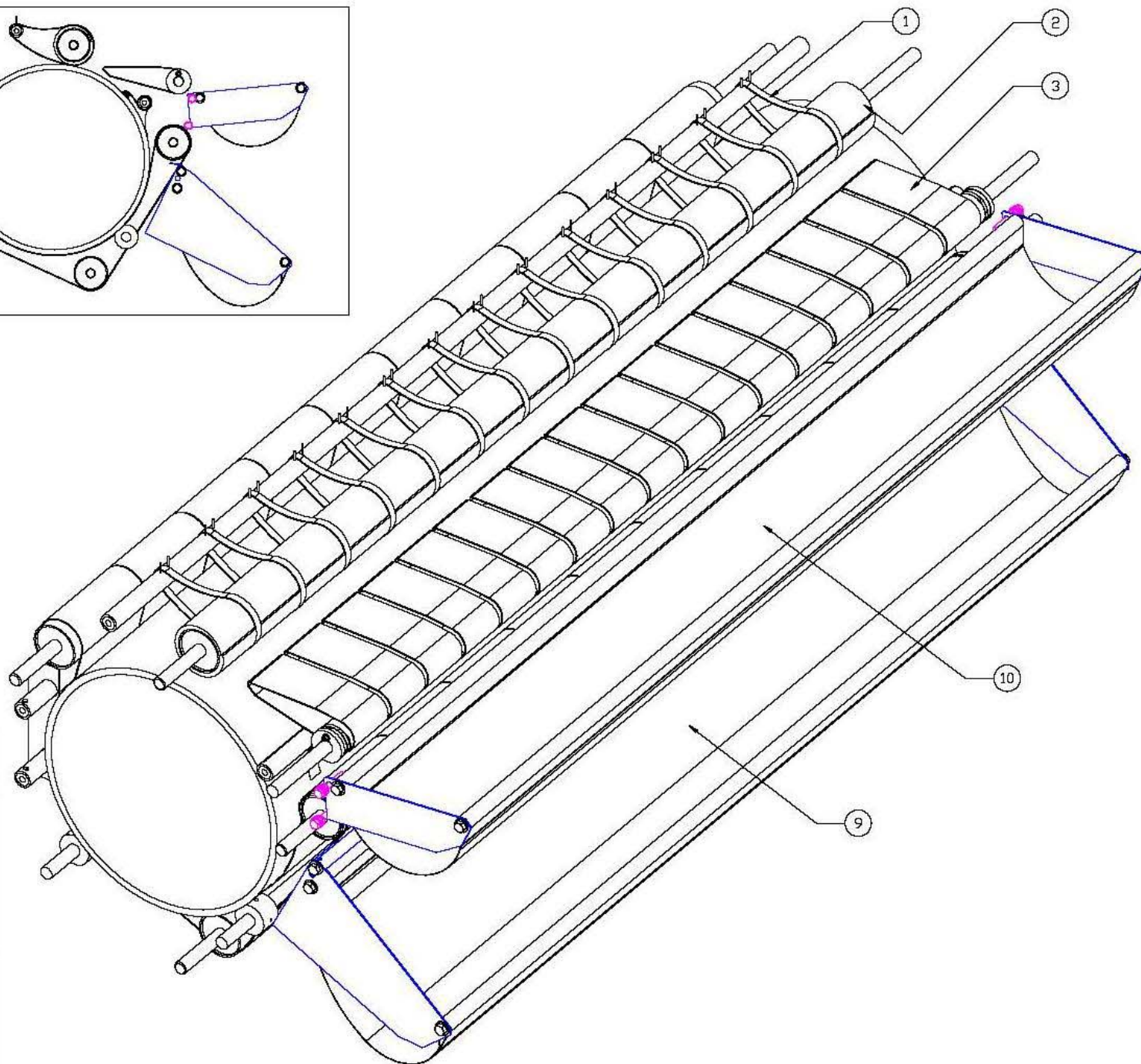
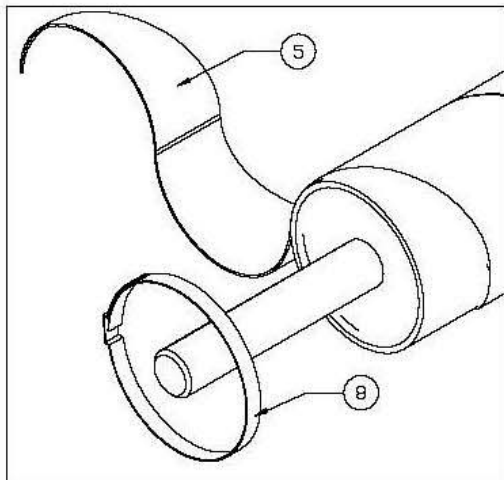
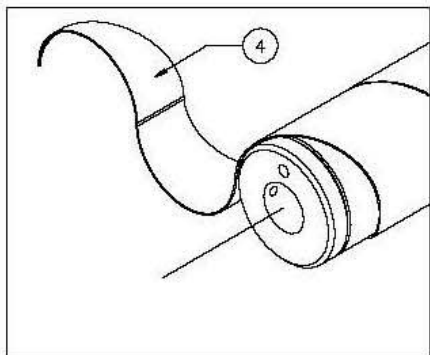
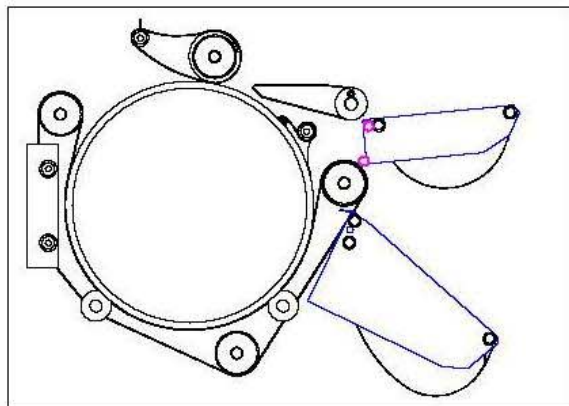
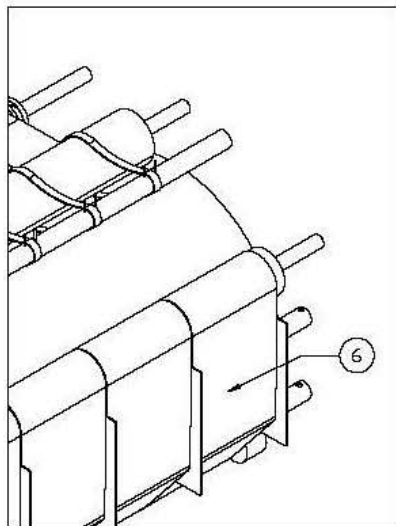


Pannellatura e carpenteria

Lateral panels and main frame

| Pos. | Model | Cod. | Descrizione | Description | Note (QTY) |
|------|----------|----------------|-------------------------------------|-----------------------------------|---------------|
| 1 | C 320/51 | TOL-TOU-1927 | Flangia aspiratore | Fan flange | (2 pcs) |
| 2 | | TOL-MAX-0022 | Carter | Carter | (2 pcs) |
| 4 | C 190/51 | TOL-TOU-1944 | Raccogli biancheria | Tub ironed laundry | (2 pcs) |
| | C 250/51 | TOL-TOU-2515 | | | |
| | C 320/51 | TOL-TOU-3203 | | | |
| 5 | C 190/51 | TOL-TOU-1925 | Raccogli biancheria | Tub input laundry | (2 pcs) |
| | C 250/51 | TOL-TOU-2505 | | | |
| | C 320/51 | TOL-TOU-3205 | | | |
| 6 | C 190/51 | TOL-TOU-1926 | tavolo | Table | (2 pcs) |
| | C 250/51 | TOL-TOU-2508 | | | |
| | C 320/51 | TOL-TOU-3206 | | | |
| 7 | | TOL-TOU-1904 | Supporto | Support | (2 pcs) |
| 8 | C 190/51 | TOL-MAX-0009 | Barra salvadita | Safety finger bar | (1 pc) |
| | C 250/51 | TOL-MAX-0010 | | | |
| | C 320/51 | GR650000011000 | | | |
| 9 | | MEC-RAB-0005 | Perno | Pin-shaft | (1 pc) |
| 10 | | QUI-NCA-0276 | Molla barra sicurezza | Safety bar spring | (1 pc) |
| 11 | C 190/51 | TOL-MAX-0018 | Frontale inferiore | Lower front panel | (1 pc) |
| | C 250/51 | TOL-MAX-0019 | | | |
| | C 320/51 | TOL-MAX-0020 | | | |
| 12 | | TOL-MAX_0037 | Supporto gancio tavola introduzione | Supporting hook for loading table | (2 pcs) |
| 13 | | TOL-TOU-1914 | Base | Bottom panel | (2 pcs) |
| 14 | C 190/51 | TOL-MAX-0003 | Longherone | Lateral cross base | (2 pcs) |
| | C 250/51 | TOL-MAX-0004 | | | |
| | C 320/51 | TOL-MAX-0005 | | | |
| 15 | | TOL-TOU-0001 | Fianco | Side cabinet | (1 pc) |
| 16 | | TOL-TOU-0002 | Fianco | Side cabinet | (1 pc) |
| 17 | | | Pannello laterale | Side panel | (1 pc) |
| 18 | | | Pannello laterale | Side panel | (1 pc) |
| 19 | C 190/51 | TOL-MAX-0006 | Pannello superiore | Upper cover panel | (1 pc) |
| | C 250/51 | TOL-MAX-0007 | | | |
| | C 320/51 | TOL-MAX-0008 | | | |
| 20 | C 190/51 | TOL-MAX-1921 | Fondo | Bottom panel | (1 pc) |
| | C 250/51 | TOL-MAX-2503 | | | |
| | C 320/51 | TOL-MAX-3201 | | | |
| 21 | | TOL-MAX-0029 | Gancio fondo | Bottom holding hook | (2 pcs) |
| 22 | C 190/51 | TOL-TOU-1922 | Pannello posteriore | Rear panel | (1 pc) |
| | C 250/51 | TOL-TOU-2504 | | | |
| | C 320/51 | TOL-TOU-3202 | | | |
| 23 | | MEC-TOU-0019 | Ventola aspirazione | Propeller fan | (1 pc) |
| 24 | | MEC-TOU-0020 | Ventola aspirazione | Propeller fan | Opt. (1 pc) |
| 25 | | TOL-TOU-1910 | Copertura ventola | Propeller fan cover | Opt. (1 pc) |

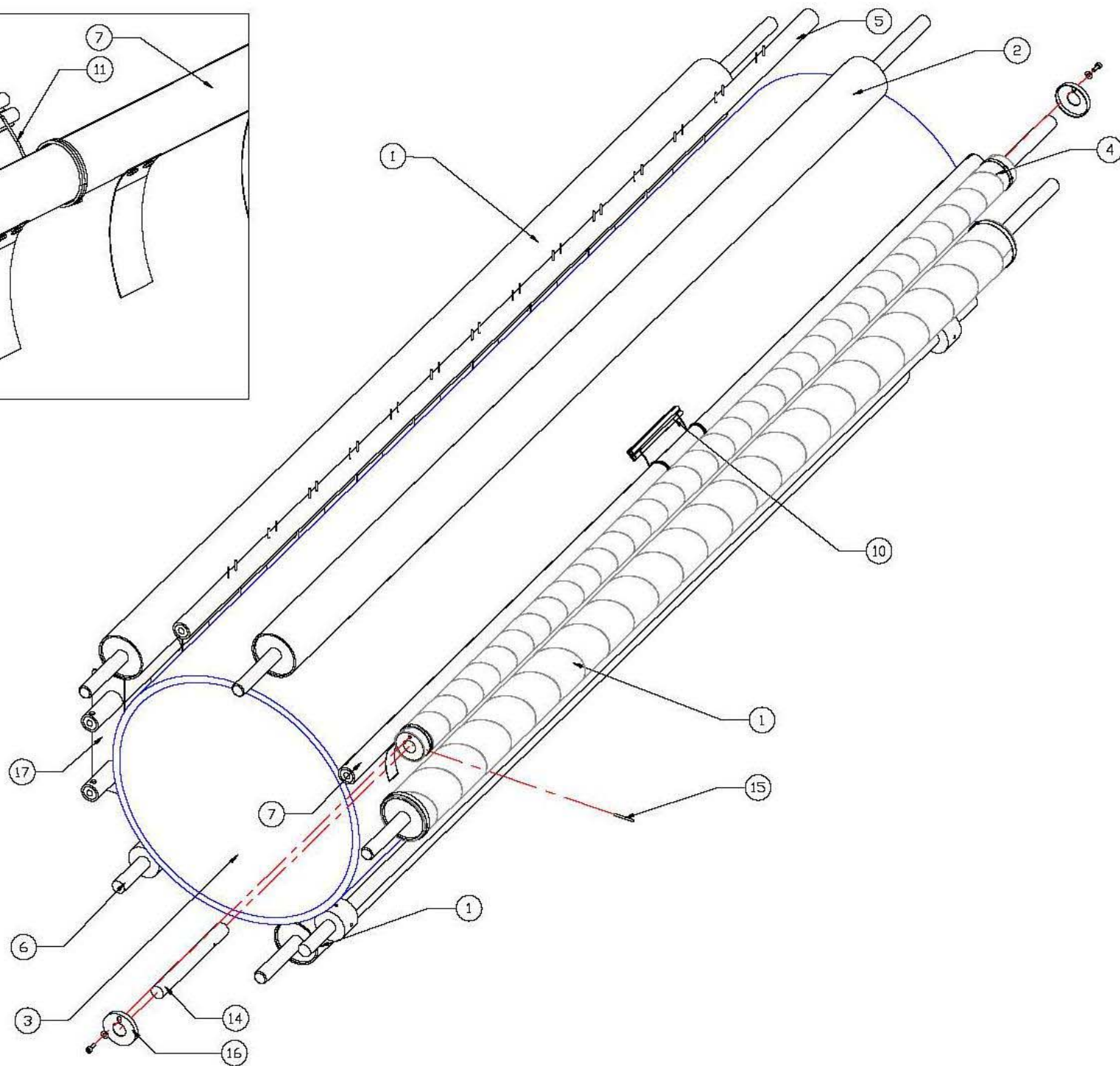
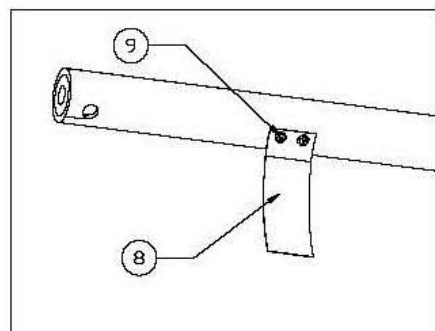
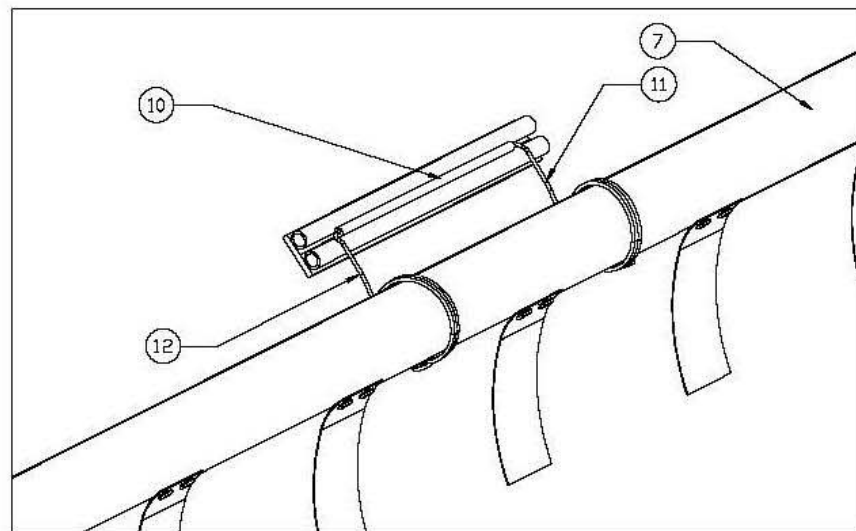
| | | | | | |
|----|----------|----------------|----------------------------------|--------------------------------|----------------|
| 26 | | TOL-TOU-1909 | Copertura ventola | Propeller fan cover | (1 pc) |
| 27 | | QUI-NCA-0065 | Curva 90° | 90° bend | (1 or 2 pcs) |
| 28 | | QUI-NCA-0066 | Tubo scarico fumane | Exhaust pipe | (1 or 2 pcs) |
| 29 | | TOL-TOU-1908 | Supporto motore aspirazione | Fan motor support | (1 or 2 pcs) |
| 30 | | TOL-TOU-1902 | Pannello ispezione | Inspection panel | (2 pcs) |
| 31 | | QUI-NCA-0523 | Membrane comandi | Command panel | (1 pc) |
| 32 | | TOL-TOU-1916 | Staffa di trasporto | Transport brackets | (2 pcs) |
| 33 | | TOL-TOU-1915 | Staffa di trasporto | Transport brackets | (2 pcs) |
| 34 | | TOL-TOU-1913 | Chiusura leva manuale | Manual lever cover | (1 pc) |
| 36 | | | Chiusura laterale tubo | Lateral additional panel | (1 pc) |
| 37 | | | Chiusura laterale tubo | Lateral additional panel | Opt. (1 pc) |
| 38 | | GR650000000006 | Manovella | Manual lever | (1 pc) |
| 39 | | TOL-MAX-0024 | Piastra cablaggio | Electrical panel support | (1 pc) |
| 40 | | | Staffa | Bracket | (1 pc) |
| 41 | | | Placca | Plate | (1 pc) |
| 42 | | TOL-MAX-0051 | Fianco vasca raccogli biancheria | Lateral panel of discharge tub | (1 pc) |
| 43 | | TOL-MAX-0023 | Fianco vasca raccogli biancheria | Lateral panel of discharge tub | (1 pc) |
| 44 | C 190/51 | TOL-TOU-1945 | Vasca raccogli biancheria | Discharge tub | (1 pc) |
| | C 250/51 | TOL-TOU-2516 | | | |
| | C 320/51 | TOL-TOU-3204 | | | |



Componentistica rullo + bande

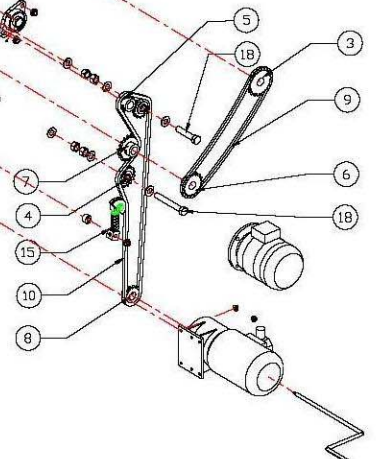
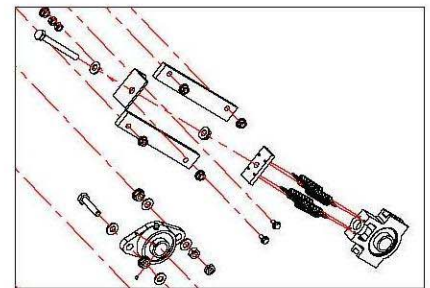
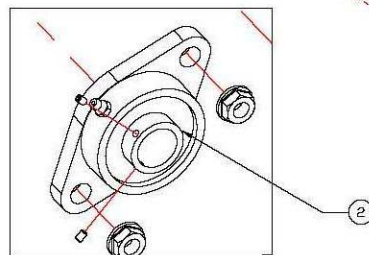
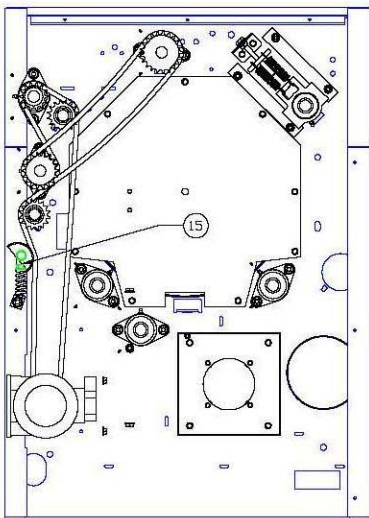
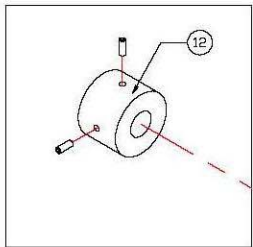
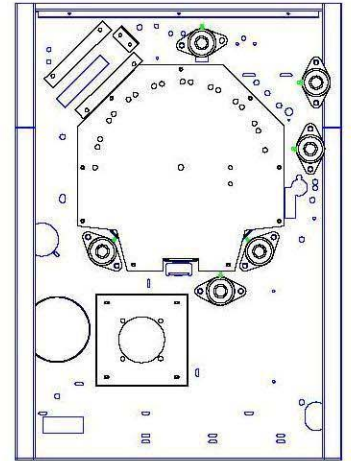
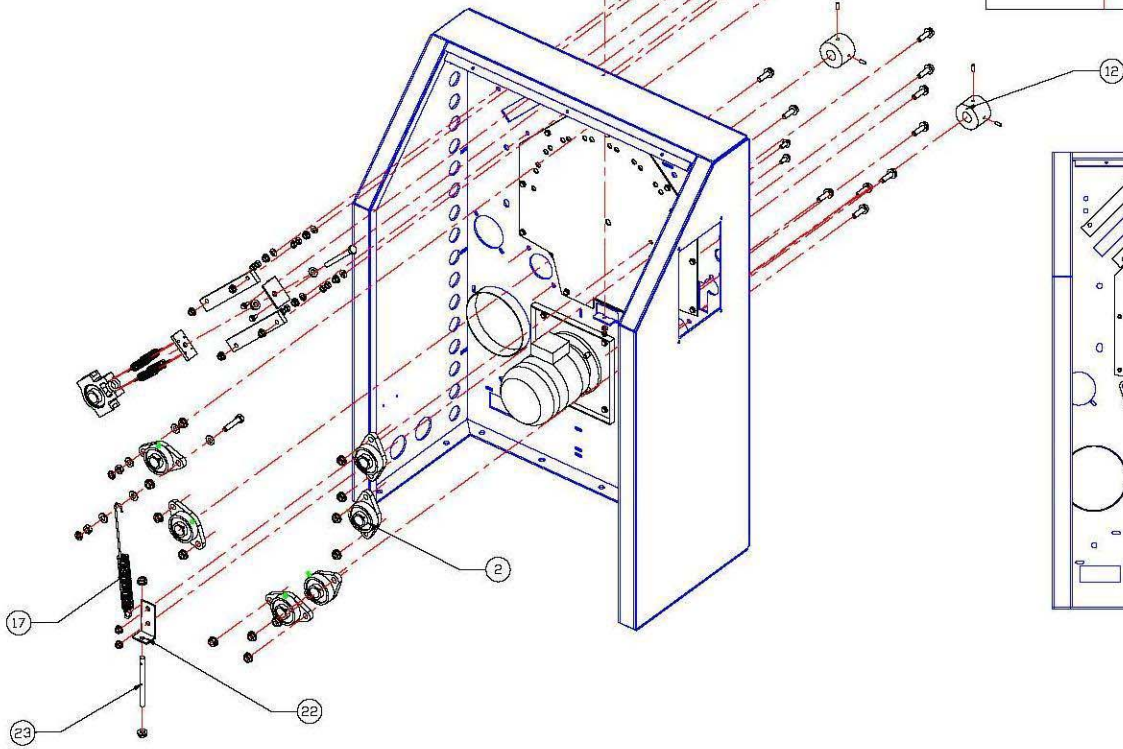
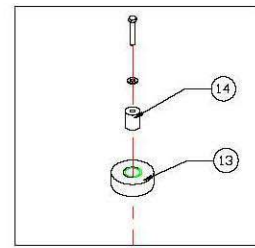
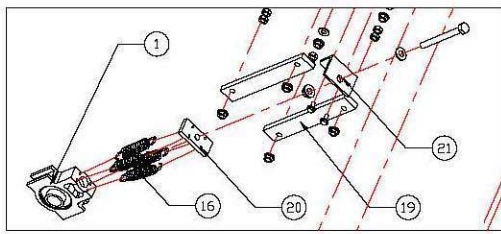
Belt and roller components

| Pos. | Model | Cod. | Descrizione | Description | Note (QTY) |
|------|----------|----------------|---------------------------------------|------------------------------|--------------|
| 1 | C 190/51 | GR650000095003 | Bandella stacca biancheria | Detachment band | (10 mt) |
| | C 250/51 | | | | (13 mt) |
| | C 320/51 | | | | (17 mt) |
| 2 | C 190/51 | QUI-NCA-0471 | Mollettone rullo pressore | Pression roller felt | (1 pc) |
| | C 250/51 | GR65000094998 | | | |
| | C 320/51 | GR65000094999 | | | |
| 3 | C 190/51 | GR65000023050 | Bande introduzione | Loading bands | (17 pcs) |
| | C 250/51 | | | | (21 pcs) |
| | C 320/51 | | | | (27 pcs) |
| 4 | C 190/51 | GR65000095100 | Banda adesiva d'introduzione | Loading roller adhesive band | (9 mt) |
| | C 250/51 | | | | (11 mt) |
| | C 320/51 | | | | (14 mt) |
| 5 | C 190/51 | GR65000095100 | Banda adesiva di stiratura | Ironing roller adhesive band | (13 mt) |
| | C 250/51 | | | | (16 mt) |
| | C 320/51 | | | | (20 mt) |
| 6 | C 190/51 | GR65000095004 | Bande di stiratura | Ironing bands | (10 pcs) |
| | C 250/51 | | | | (13 pcs) |
| | C 320/51 | | | | (16 pcs) |
| 8 | | QUI-NCA-0349 | Fascetta metallica | Metallic clamp | (2 pcs) |
| 9 | C 190/51 | GR650000060500 | Telo vasca raccogli biancheria in PVC | Delivery tray | (1 pc) |
| | C 250/51 | QUI-NCA-0606 | | | |
| | C 320/51 | QUI-NCA-0607 | | | |
| 10 | C 190/51 | QUI-NCA-0601 | Vasca raccogli biancheria | Loading tray | (1 pc) |
| | C 250/51 | QUI-NCA-0602 | | | |
| | C 320/51 | QUI-NCA-0603 | | | |



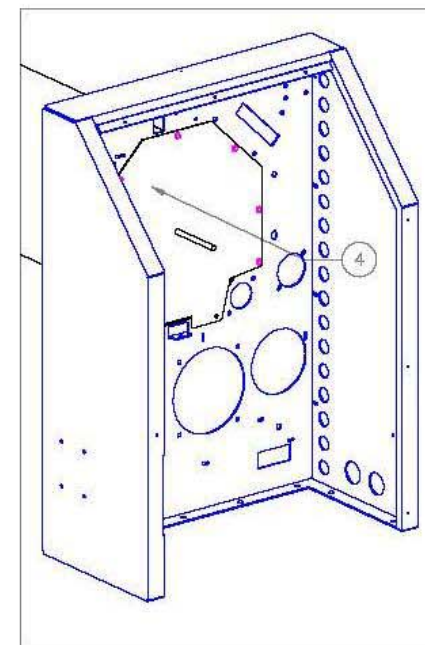
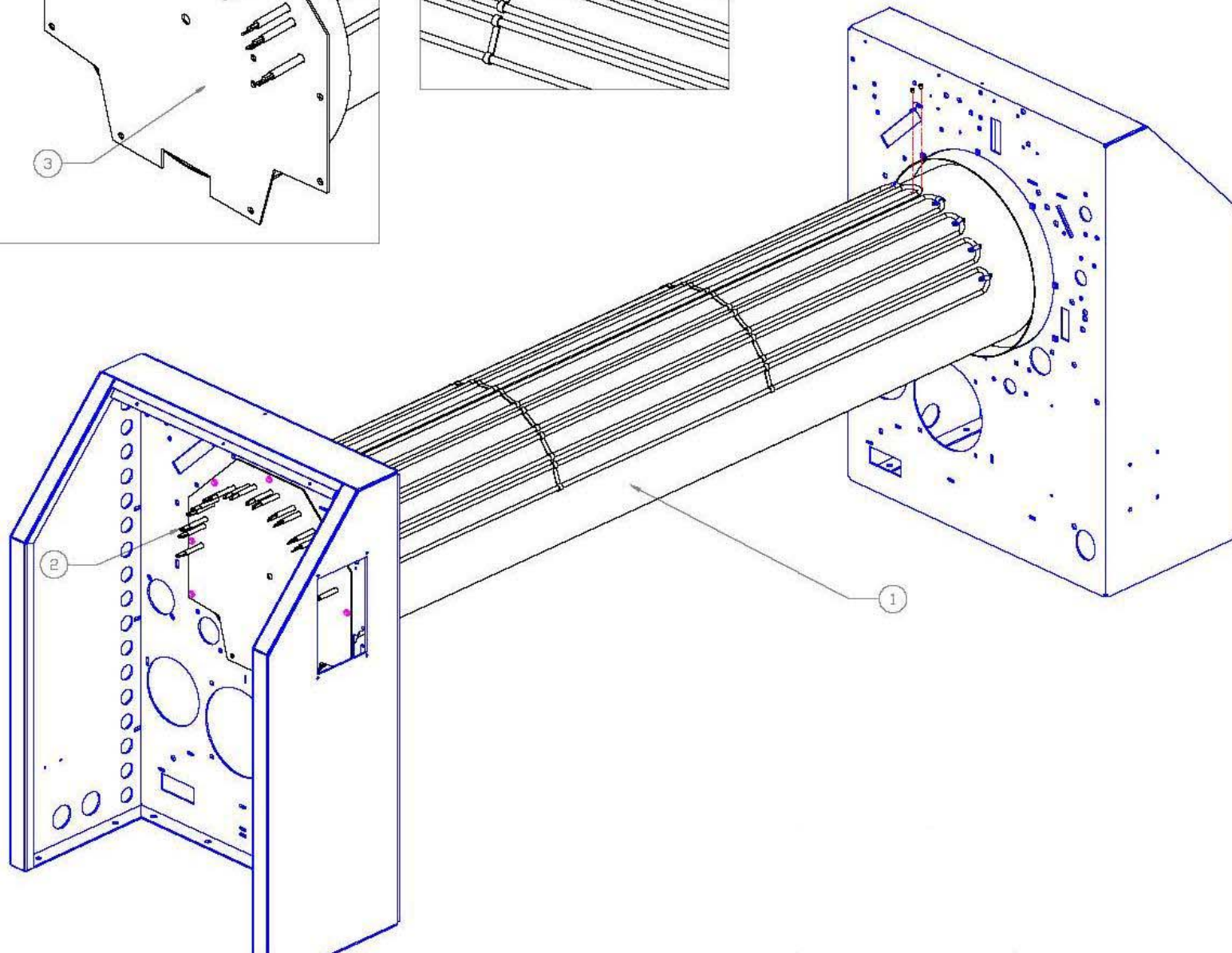
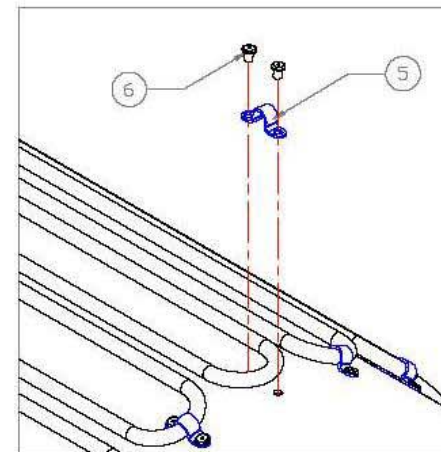
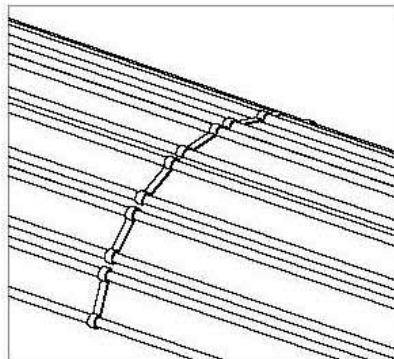
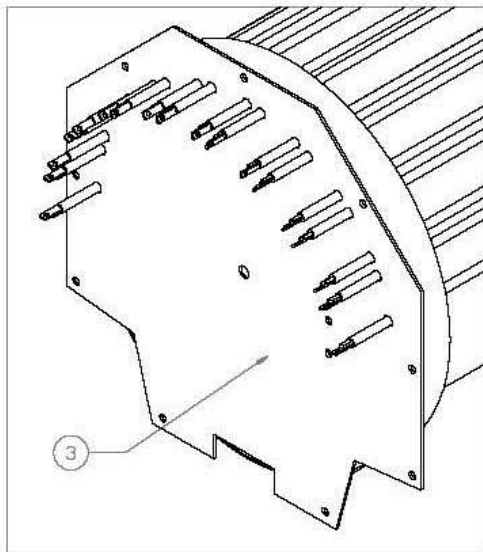
Componentistica rulli Rollers assembly

| Pos. | Model | Cod. | Descrizione | Description | Note (QTY) |
|------|----------|----------------|--|--|------------------------------------|
| 1 | C 190/51 | TOL-TOU-1957 | Rullo trascinamento bande stiratura | Auxiliary ironing roller | (3 pcs) |
| | C 250/51 | GR650000252200 | | | |
| | C 320/51 | TOL-TOU-3221 | | | |
| 2 | C 190/51 | TOL-TOU-1930 | Rullo pressore | Upper roller | (1 pc) |
| | C 250/51 | TOL-TOU-2510 | | | |
| | C 320/51 | TOL-TOU-3208 | | | |
| 3 | C 190/51 | TOL-TOU-1918 | Rullo stiratura | Ironing roller | (1 pc) |
| | C 250/51 | TOL-TOU-2501 | | | |
| | C 320/51 | TOL-TOU-3211 | | | |
| 4 | C 190/51 | TOL-TOU-1929 | Rullo bande introduzione | Loading bands roller | (1 pc) |
| | C 250/51 | GR650000250900 | | | |
| | C 320/51 | TOL-TOU-3207 | | | |
| 5 | C 190/51 | TOL-TOU-1933 | Asta guida stacco biancheria | Detachment band holder | (1 pc) |
| | C 250/51 | TOL-TOU-2512 | | | |
| | C 320/51 | TOL-TOU-3220 | | | |
| 6 | C 190/51 | GR650000000014 | Rulli di sostegno rullo stiratura | Auxiliary support roller for cylinder | Gas and electrical (2 pcs) |
| | C 250/51 | GR650000000081 | | | |
| | C 320/51 | MEC-TOU-0082 | | | |
| 7 | C 190/51 | TOL-TOU-1932 | Rullo supporto sonda temperatura | Roller support temperature probe | (1 pc) |
| | C 250/51 | TOL-TOU-2511 | | | |
| | C 320/51 | TOL-TOU-3215 | | | |
| 8 | C 190/51 | GR650000001425 | Lamella stacco biancheria | Lifting blade | (16 pcs) |
| | C 250/51 | | | | (20 pcs) |
| | C 320/51 | | | | (26 pcs) |
| 9 | | | Rivetto | Rivets | |
| 10 | | GR65000000301 | Supporto sonda temperatura | Temperature probe support | (1 pc) |
| 11 | | GR650000056400 | Molla sonda temperatura | Temperature probe spring | (1 pc) |
| 12 | | GR650000056400 | Molla sonda temperatura | Temperature probe spring | (1 pc) |
| 14 | | MEC-TOU-0013 | Asse rullo introduzione | Loading roller shaft | (2 pcs) |
| 15 | | | Spina rullo introduzione | Pin for loading roller | (1 pc) |
| 16 | | TOL-TOU-1952 | Rondella | Washer | (2 pcs) |
| 17 | C 190/51 | TOL-TOU-1931 | Guida bande stiratura | Ironing bands guide | (1 pc) |
| | C 250/51 | TOL-TOU-2518 | | | |
| | C 320/51 | TOL-TOU-3212 | | | |



Assieme fianco destro e sinistro Side assembly (right and left)

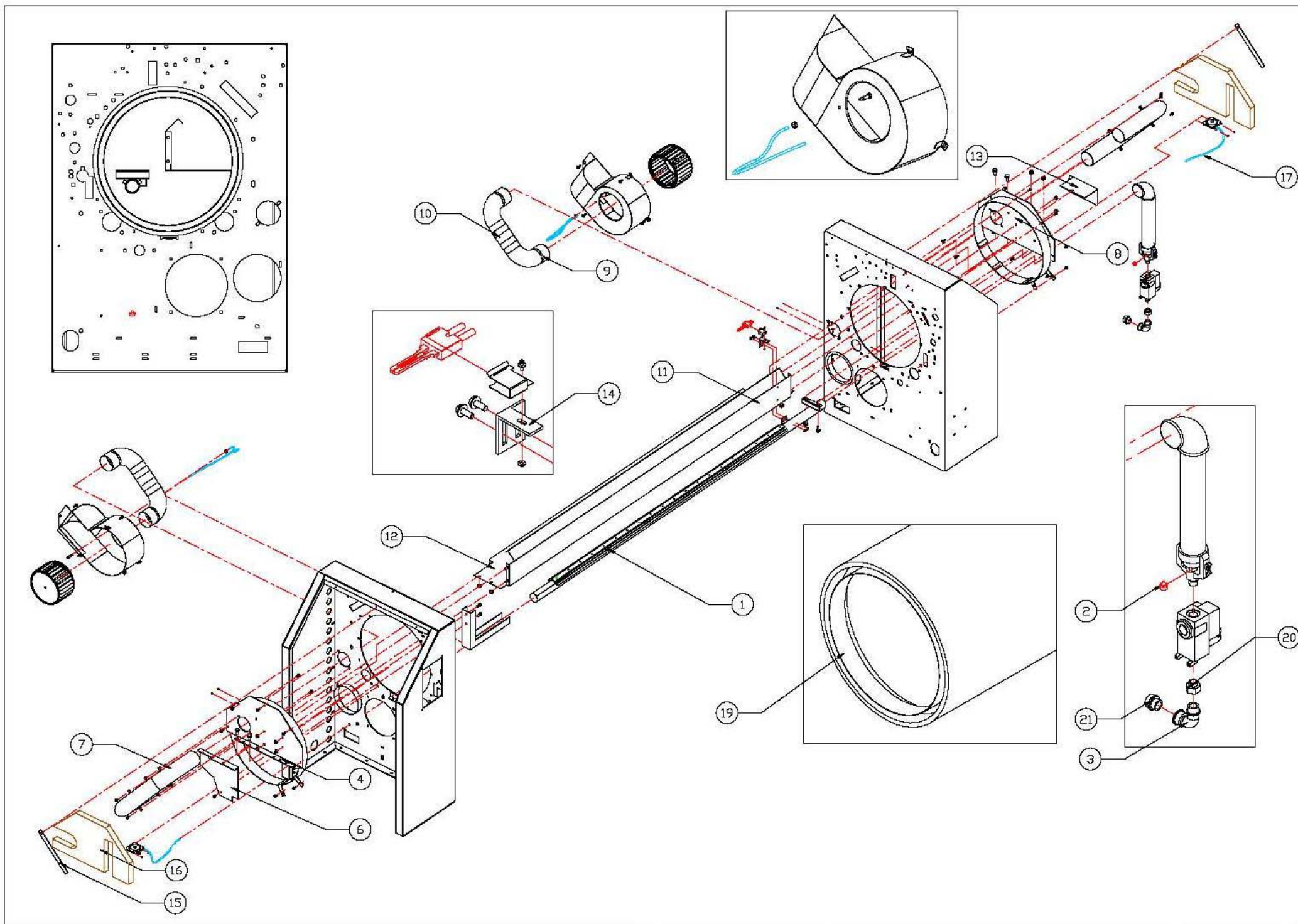
| Pos. | Model | Cod. | Descrizione | Description | Note (QTY) |
|------|--------------------------|----------------|---|--|------------------------------|
| 1 | | MEC-TOU-0022 | Cuscinetto rullo pressore | Upper roller bearing | (2 pcs) |
| 2 | C 190/51 E C 190/51 G | GR650000002100 | Cuscinetto rulli stiratura e introduzione | Bearings for loading and ironing rollers | (12 pcs) |
| | C 250/51 E C 250/51 G | | | | (12 pcs) |
| | C 320/51 E C 320/51 G | | | | (16 pcs) |
| | C 190/51 V | | | | (8 pcs) |
| | C 250/51 V | | | | (8 pcs) |
| | C 320/51 V | | | | (8 pcs) |
| 3 | | MEC-TOU-0011 | Pignone Z21 per rullo pressore | Upper roller pinion Z21 | (1 pc) |
| 4 | | GR650000000064 | Pignone tension. Z16 | Tighten pinion Z16 | (2 pcs) |
| 5 | | GR650000000008 | Pignone rullo stiratura Z14 | Ironing roller pinion Z14 | (1 pc) |
| 6 | | GR650000001000 | Pignone Z18 | Pinion Z18 | (1 pc) |
| 7 | | GR650000000900 | Pignone Z19 | Pinion Z19 | (1 pc) |
| 8 | | GR650000000800 | Pignone motore Z14 | Motor pinion Z14 | (1 pc) |
| 9 | | GR650000002700 | Catena rullo pressore | Upper roller chain | (1,1 mt) |
| 10 | | GR650000002700 | Catena rulli stiratura | Ironing rollers cahin | (1,7 mt) |
| 12 | | MEC-TOU-0001 | Rullini supporto cilindro | Support cylinder rollers | Gas and electrical (4 pcs) |
| 13 | | GR650000020012 | Rulli laterali | Lateral rollers | (2 pcs) |
| 14 | | GR650000020013 | Asse rullini laterali | Lateral roller shaft | (2 pcs) |
| 15 | | GR650000000094 | Tensore catena | Chain tighter | (1 pc) |
| 16 | | QUI-NCA-0080 | Molla tensionam. rullo | Tightening roller spring | (8 pcs) |
| 17 | | GR650000000057 | Molla rullo pressore | Upper roller spring | (2 pcs) |
| 18 | | VIS-SER-0237 | Asse pignone H 120mm | Pinion shaft H 120 mm | (1 pc) |
| | | VIS-SER-0139 | Asse pignone H 80mm | Pinion shaft H 80 mm | (1 pc) |
| 19 | | MEC-TOU-0002 | Guide cusc.tens. | Tighten bearing guide | (4 pcs) |
| 20 | | MEC-TOU-0003 | Staffa tens. | Tightening bracket | (2 pcs) |
| 21 | | TOL-TOU-1911 | Staffa vite tens. | Bracket | (2 pcs) |
| 22 | | TOL-MAX-0034 | Staffa | Bracket | (2 pcs) |
| 23 | | MEC-TOU-0037 | Asse molla | Spring shaft | (2 pcs) |



Assieme riscaldamento elettrico

Electrical heating assembly

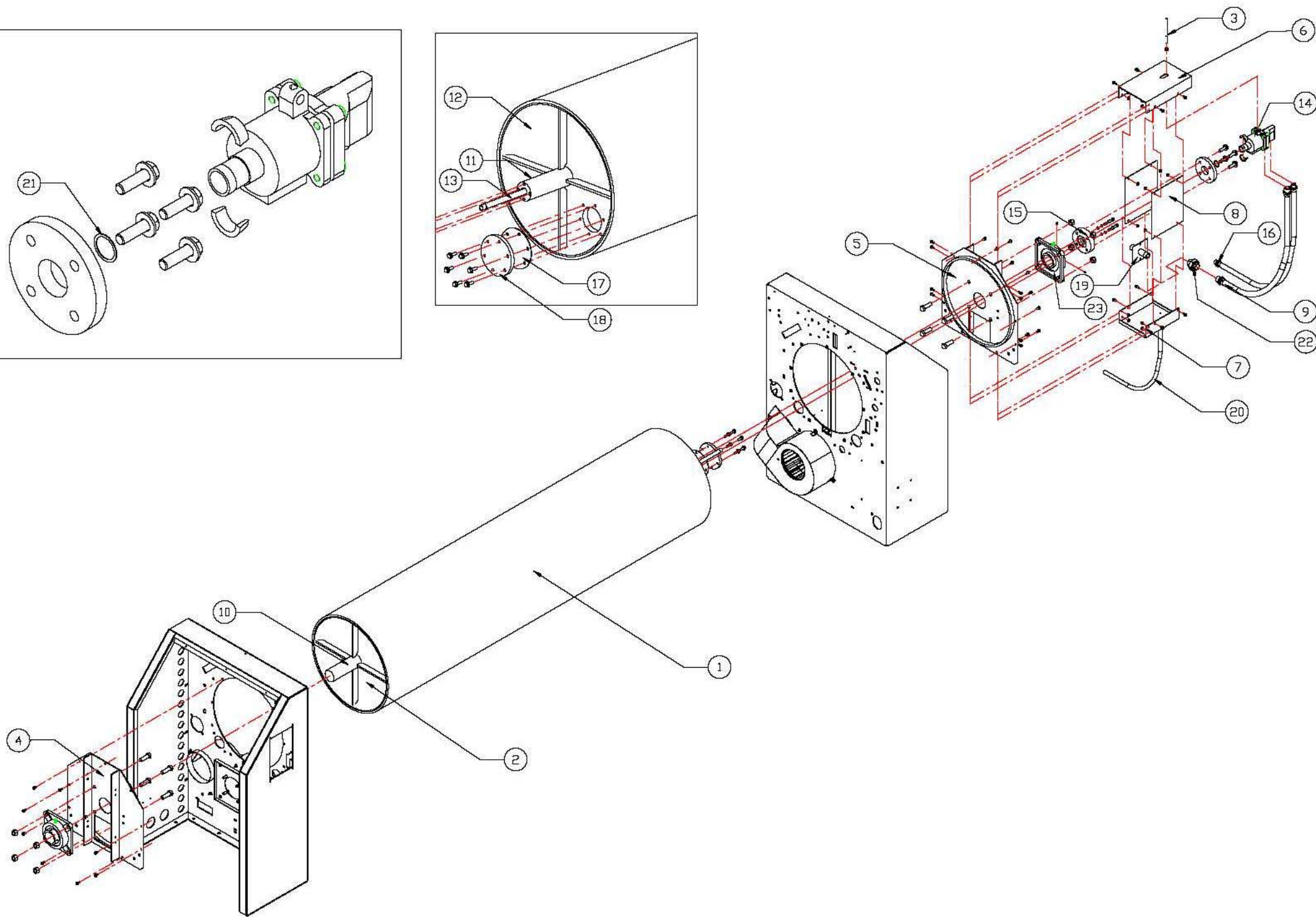
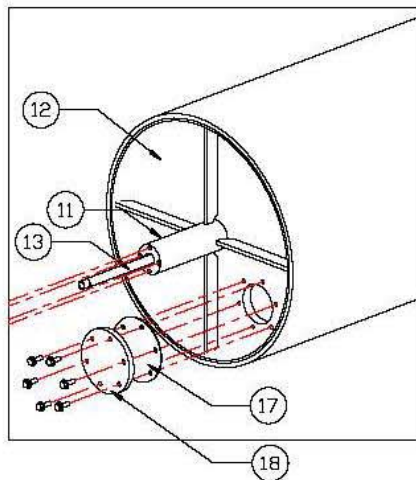
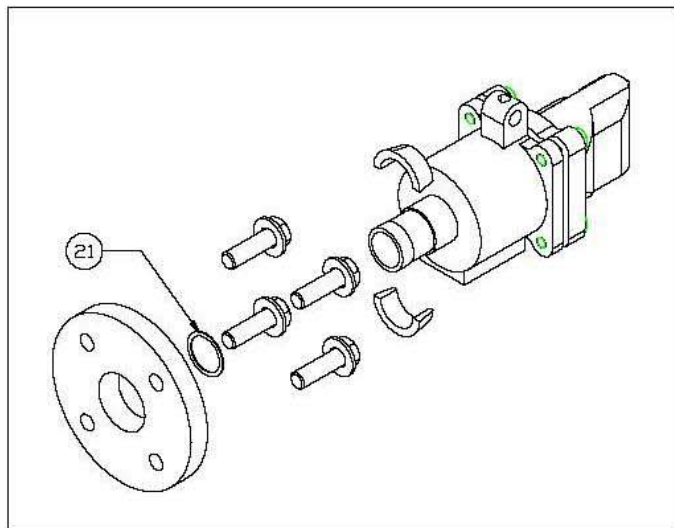
| Pos. | Model | Cod. | Descrizione | Description | Note (QTY) |
|------|----------|---------------|---|--|--------------|
| 1 | C 190/51 | TOL-TOU-1940 | Cilindro interno per supporto resistenze | Inner cylinder for electrical heating elements support | (1 pc) |
| | C 250/51 | TOL-TOU-2517 | | | |
| | C 320/51 | TOL-TOU-3210 | | | |
| 2 | C 190/51 | GR65000001900 | Resistenze riscaldamento | Heating elements | (9 pcs) |
| | C 250/51 | GR65000002500 | | | (18 pcs 9 |
| | C 320/51 | GR65000003200 | | | (18 pcs) |
| 3 | C 190/51 | TOL-TOU-1961 | Piastra laterale riscaldamento | Lateral plate cover | (1 pc) |
| | C 250/51 | | | | |
| | C 320/51 | TOL-TOU-3226 | | | |
| 4 | C 190/51 | TOL-TOU-1959 | Piastra laterale riscaldamento | Lateral plate cover | (1 pc) |
| | C 250/51 | TOL-TOU-1960 | | | |
| | C 320/51 | TOL-TOU-3225 | | | |
| 5 | C 190/51 | QUI-NCA-0260 | Fascetta resistenza | Element clamp | (9 pcs) |
| 6 | C 190/51 | VIS-SER-0129 | Rivetto | Rivet | (18 pcs) |



Assieme riscaldamento gas

Gas heating assembly

| Pos. | Model | Cod. | Descrizione | Description | Note (QTY) |
|------|----------|--------------|------------------------------|-------------------------------|----------------|
| 1 | C 190/51 | QUI-NCA-0424 | Bruciatore | Burner | (1 pc) |
| | C 250/51 | QUI-NCA-0425 | | | |
| | C 320/51 | QUI-NCA-0426 | | | |
| 2 | | QUI-NCA-0096 | Iniettore | Gas injector | (1 pc) |
| 3 | | QUI-NCA-0183 | Curva 90° | 90° bend | (1 pc) |
| 4 | | TOL-TOU-1958 | Piastra | plate | (1 pc) |
| 5 | C 190/51 | TOL-MAX-0027 | Support bruciatore | Burner support | (1 pc) |
| | C 250/51 | | | | |
| | C 320/51 | TOL-MAX-0028 | | | |
| 6 | | TOL-TOU-1968 | Piastra | Plate | (1 pc) |
| 7 | | TOL-TOU-1943 | Tubo scarico fumane | Ehasut pipe | (4 pcs) |
| 8 | | TOL-TOU-1928 | Piastra | Plate | (1 pc) |
| 9 | | QUI-NCA-0234 | Curva 90° | 90° bend | Opt. (1 pc) |
| 10 | | QUI-NCA-0067 | Tubo spiratore | Pipe | Opt. (2 pcs) |
| 11 | C 190/51 | TOL-TOU-1912 | Deflettore | Gas screen | (1 pc) |
| | C 250/51 | TOL-TOU-2513 | | | |
| | C 320/51 | TOL-TOU-3213 | | | |
| 12 | C 190/51 | TOL-TOU-1953 | Deflettore | divertor | (1 pc) |
| | C 250/51 | TOL-TOU-2520 | | | |
| | C 320/51 | TOL-TOU-3216 | | | |
| 13 | | TOL-TOU-1941 | Flangia | Flange | (1 pc) |
| 14 | | TOL-TOU-1920 | Supporto candeletta | Ignitor support | (1 pc) |
| 15 | | TOL-MAX-0030 | Support isolante | Insulator fixation | (2 pcs) |
| 16 | | QUI-NCA-0034 | Isolante | Insulator | (2 pcs) |
| 17 | | QUI-NCA-0429 | Tubo pressostato | Pressure switch pipe | (1 pc) |
| 19 | | TOL-TOU-1922 | Deflettore gas | Gas deflector | (2 pcs) |
| 20 | | QUI-NCA-0268 | Riduzione M/F 20/27-15/21 | Reduction M/F 20/27- 15/21 | (1 pc) |
| 21 | | QUI-NCA-0269 | Riduzione M/M 26/34-20/27 | Reduction M/M 26/34-20/27 | (1 pc) |



Assieme riscaldamento vapore

Steam heating assembly

| Pos. | Model | Cod. | Descrizione | Description | Note (QTY) |
|------|----------|--------------|------------------------------------|----------------------------------|--------------|
| 1 | C 190/51 | TOL-TOU-1919 | Cilindro | Cylinder | (1 pc) |
| | C 250/51 | TOL-TOU-2502 | | | |
| | C 320/51 | TOL-TOU-3219 | | | |
| 2 | | MEC-TOU-0041 | Flangia cilindro | Cylinder flange | (1 pc) |
| 3 | | TOL-TOU-1924 | Fermo attacco vapore | Support for steam flange | (1 pc) |
| 4 | | TOL-TOU-1947 | Supporto cuscinetto rullo | Bearing roller support | (1 pc) |
| 5 | | TOL-TOU-1948 | Supporto cuscinetto rullo | Bearing roller support | (1 pc) |
| 6 | | TOL-TOU-1937 | Coperchio attacco vapore | Cover for steam flange | (1 pc) |
| 7 | | TOL-TOU-1938 | Fondo attacco vapore | Bottom for steam flange | (1 pc) |
| 8 | | TOL-TOU-1939 | Fianco attacco vapore | Lateral panel for steam flange | (2 pcs) |
| 9 | | QUI-NCA-0569 | Tubo condensa ½' l = 1000 mm | Condensation hose ½' l = 1000 mm | (1 pc) |
| 10 | | MEC-TOU-0051 | Asse cilindro | Cylinder shaft | (1 pc) |
| 11 | | MEC-TOU-0091 | Asse cilindro | Cylinder shaft | (1 pc) |
| 12 | | MEC-TOU-0093 | Flangia cilindro | Cylinder flange | (1 pc) |
| 13 | | TOL-TOU-1923 | Sifone cilindro | Siphon cylinder | (1 pc) |
| 14 | | MEC-TOU-0089 | Attacco vapore | Steam seal group | (1 pc) |
| 15 | | MEC-TOU-0090 | Flangia attacco vapore | Steam seal flange | (1 pc) |
| 16 | | QUI-NCA-0567 | Tubo ingresso vapore ¾' l = 850 mm | Steam hose supply ¾' l = 850 mm | (1 pc) |
| 17 | | QUI-NCA-0332 | Guarnizione | Seal | (1 pc) |
| 18 | | QUI-NCA-1903 | Tappo ispezione cilindro | Inspection door | (1 pc) |
| 19 | | TOL-TOU-1917 | Attacco vapore | Steam connection | (1 pc) |
| 20 | | QUI-NCA-0381 | Tubo scarico perdite | Leakage hose | (1 pc) |
| 21 | | MEC-TOU-0092 | Tenuta | Seal | (1 pc) |
| 22 | | QUI-NCA-0193 | Tenuta | Seal | (1 pc) |
| 23 | | MEC-TOU-0023 | Cuscinetto | Bearing | (2 pcs) |