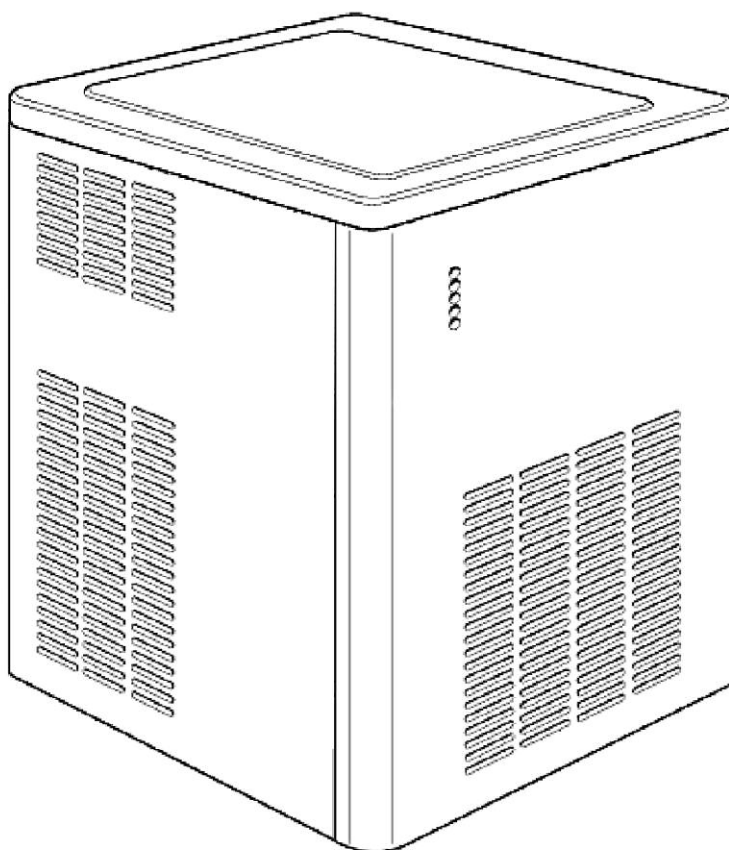


Icematic®

Spare parts list • *Catalogo ricambi*
Catalogues pièces détachées • *Ersatzteilkatalog*



Cod. 71503367/0 - 07/2013 - Rev. 006

SF 300 - SF 500
R404a

COMPONENTI PER VOLTAGGIO SPECIALE 220/60 HZ / SPECIAL VOLTAGE 230/60 HZ COMPONENTS							
GAS	MODELLO MODEL	COMPRESSORE COMPRESSOR	VENTILATORE U.C. FAN MOTOR	VENTOLE FAN	RELE' RELAY	PROTETTORE PROTECTOR	CAPACITA' D'AVV. START CAPACITOR
	SF300	CAJ 9510Z CF67009909	-	-	CF62005750	CF62005881	CF62016726
	SF500	CAJ 4519Z CF67009913	-	-	CF62005754	CF62005885	CF62016724

HOW TO ORDER SPARE PARTS

In order to avoid expensive delays or mistakes by delivery, when you order spare parts, be sure to have indicated the right code-number, the complete description you can find on the list and the quantity for each requested part. Please also include the name of the model for which the spare parts are requested and its own serial number.

COME ORDINARE LE PARTI DI RICAMBIO

Al fine di evitare costosi ritardi od errori nella spedizione, quando ordinate le parti di ricambio, accertatevi di indicare il numero di codice, la descrizione completa che trovate sull'elenco e la quantità per ogni parte di ricambio richiesta. Includere inoltre il nome del modello per cui sono richieste le parti di ricambio ed il suo numero di serie.

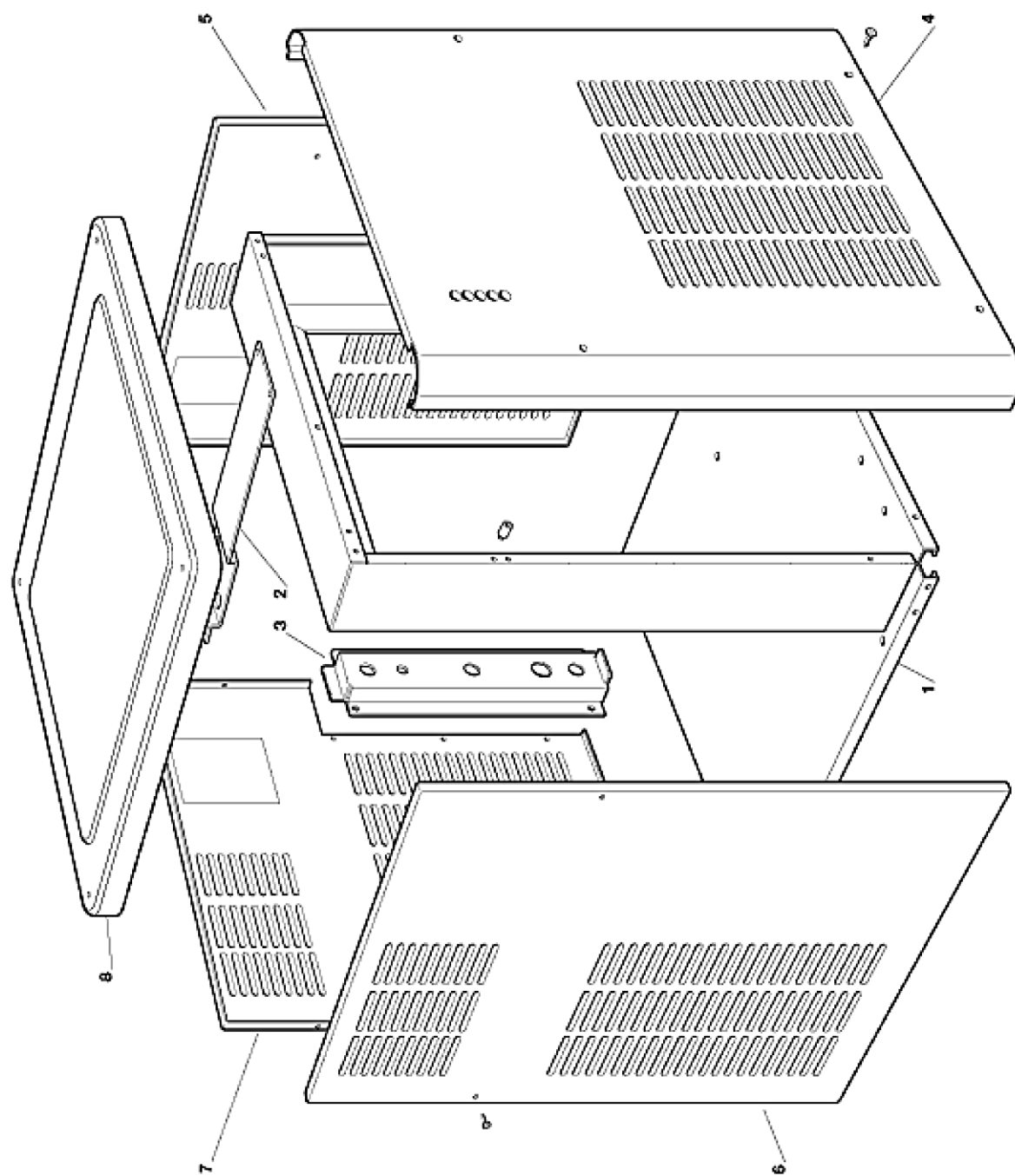
COMMENT COMMANDER LES PIÈCES DETACHEES

Pour éviter des retards coûteux ou des erreurs dans la livraison, au moment de commander les pièces détachées nous vous prions de bien vouloir vous assurer d'avoir indiqué la référence, la description complète que vous trouvez dans la liste et la quantité pour chaque pièce détachée demandée. Inclure en outre le nom du modèle pour lequel les pièces sont demandées et le numéro de série.

WIE DIE ERSATZTEILE BESTELLT WERDEN SOLLEN

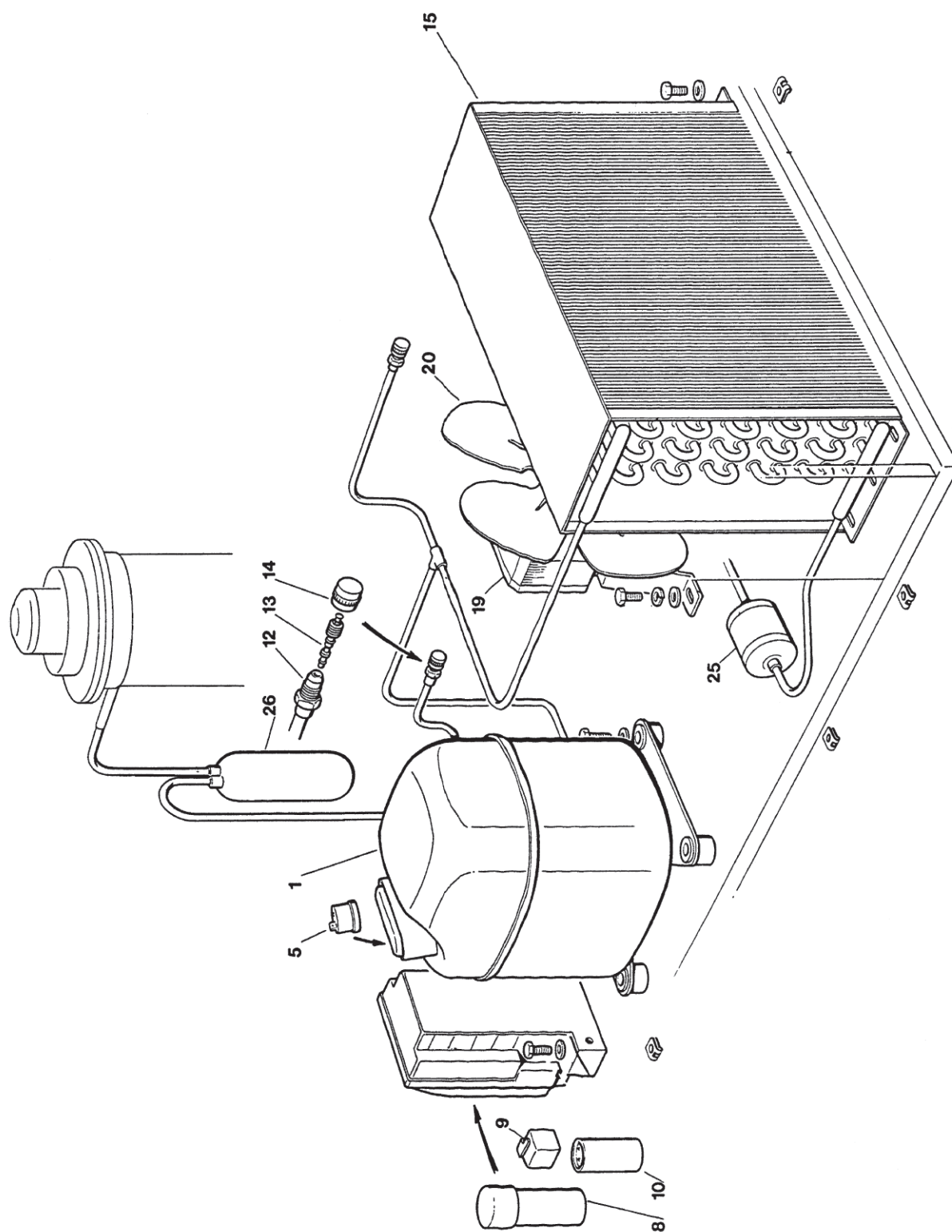
Um Fehl-b.z.w. verspätete Lieferungen zu vermeiden, geben Sie bei den Ersatzteilbestellungen die Kodenummer an. Volle Beschreibung wie in Katalog ersichtlich und Menge für sämtliche bestellte Ersatzteile sollten ebenfalls eingegeben werden. Schließlich die bestellten Ersatzteile entsprechende Seriennummer hinweisen.

SF 300 - SF 500 - UNIT PANELS - ASSIEME MOBILE - ENS. CARROSSERIE - MACHINE GEHAUSE



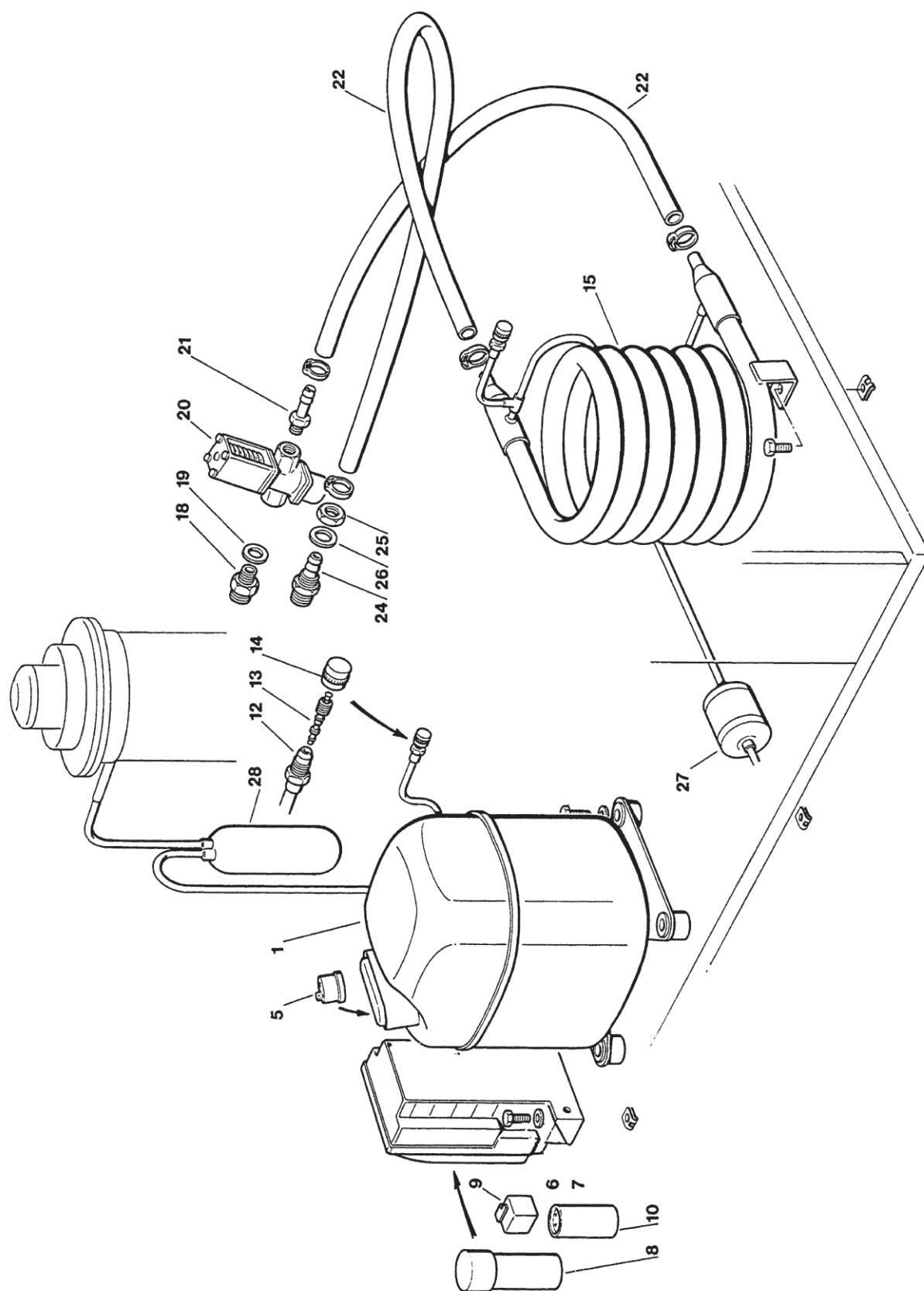
SF 300 - SF 500 - UNIT PANELS - ASSIEME MOBILE - ENS. CARROSSERIE - MACHINE GEHAUSE					
ITEM NO POS NO REP. NO REF. NO	PART NO - CODICE REFERENCE - STUECK NR SF 300 SF 500	DESCRIPTION	DESCRIZIONE	DESIGNATION	BESCHREIBUNG
1	CF 781470 00	UNIT BASE	BASAMENTO	ENSAMBLE BASEMENT ACIER INOX	CHASSISRAHMEN EDELSTAHL
1	CF 781472 00	FRONT BRACKET	SUPPORTO FRONTALE	ENCADREMENT FRONTAL	CHASSIS VORDERWAND
2	CF 781463 00	BRACKET	SUPPORTO	SUPPORT	HALTEWINKEL
3	CF 702315 00	REAR BRACKET	SUPPORTO POSTERIORE	SUPPORT ARRIERE	HALTER FÜR RÜCKWAND
4	CF 650624 04	LABEL	ADESIVO SEGNALETICO	ETIQUETTE	ETIKETT
4	CF 722279 00	FRONT PANEL	PANNELLO FRONTALE	PANNEAU AVANT	EDELSTAHL VORDERWAND
5	CF 722280 00	RIGHT SIDE PANEL	PANNELLO DX	PANNEAU DROITE	RECHTE WAND
6	CF 722281 00	LEFT SIDE PANEL	PANNELLO SX	PANNEAU GAUCHE	LINKSWAND
7	CF 722282 00	REAR PANEL	PANNELLO POSTERIORE	PANNEAU ARRIERE	REUCKWAND
8	CF 660867 01	TOP PANEL	PANNELLO SUPERIORE	PANNEAU SUPERIEURE	ABDECKHAUBE

SF 300 - SF 500 - REFRIGERANT SYSTEM AIR COOLED - SISTEMA REFRIGERANTE RAFFR. AD ARIA
CIRCUIT FRIGORIFIQUE REFROID. PAR AIR - LUFTGEKÜHLT GEFRIERSYSTEM



SF 300 - SF 500 - REFRIGERANT SYSTEM AIR COOLED - SISTEMA REFRIGERANTE RAFFR. AD ARIA CIRCUIT FRIGORIFIQUE REFROID. PAR AIR - LUFTGEKÜHLT GEFRIERSYSTEM					
ITEM NO POS NO REF. NO	PART NO - CODICE REFERENCE - STUECK NR SF 300	DESCRIPTION	DESCRIZIONE	DESIGNATION	BESCHREIBUNG
1	19165554/0 *****	COMPRESSOR ASSY 220 V COMPRESSOR ASSY 380 V	ASSIEME COMPRESSORE 220 V ASSIEME COMPRESSORE 380 V	ENSEMBLE COMPRESSEUR 220 V ENSEMBLE COMPRESSEUR 380 V	KOMPRESSOR 220 V KOMPRESSOR 380 V
5	CF 620058 78 *****	PROTECTOR 220 V PROTECTOR 380 V	PROTETTORE 220 V PROTETTORE 380 V	PROTECTEUR 220 V PROTECTEUR 380 V	SCHUTZGERÄT 220 V SCHUTZGERÄT 380 V
8	CF 620167 21	RUN CAPACITOR 220 V	CAPACITA DI MARCIA 220 V	CAPACITÉ PERMANENCE 220 V	BETRIEB KONDESATOR 220 V
9	CF 620057 46	START RELAY 220 V	RELE DI AVVIAMENTO	RELAIS DE DEMARRAGE 220 V	RELAIS 220 V
10	CF 620167 47	START CAPACITOR 220 V	CAPACITA D'AVVIAMENTO 220 V	CAPACITÉ DE DEMARRAGE 220 V	START KONDESATOR 220 V
12	CF 650109 00	VALVE BODY	CORPO VALVOLA	CORPS DE VANNE	VENTILGEHAUSE
13	CF 670012 00	VALVE PISTON	PISTONCINO VALVOLA	PISTON	VENTILKOLBEN
14	CF 650106 00	VALVE CAP	CAPPUCCIO VALVOLA	CAPUCHON DE VANNE	VENTILKLAPPE
15	CF 620436 00	AIR COOLED CONDENSER	CONDENSATORE AD ARIA	CONDENSEUR A AIR	LUFTGEKÜHLT KONDENSATOR
19	CF 620419 04	FAN MOTOR	MOTORE VENTILATORE	MOTEUR VENTILATEUR	LUFTER MOTOR
20	CF 620419 34	FAN BLADE	VENTOLA	HELICE	FLUEGEL
25	CF 670006 01	DRIER	FILTRO DEUMIDIFICATORE	FILTRE DESHYDRATEUR	TROCKNER
26	CF 784450 01	SUCTION LINE/ACCUMULATORE	ACCUMULUL. E LINEA ASPIRAZIONE	ENS. ASPIRATION/ACCUMULATEUR	SAMMLER UND SAUGLEITUNGEN

SF 300 - SF 500 - REFRIGERANT SYSTEM WATER COOLED - SISTEMA REFRIGERANTE RAFFR. AD ACQUA
CIRCUIT FRIGORIFIQUE REFROID. PAR EAU - WASSERGEKÜHLT GEFRIERSYSTEM

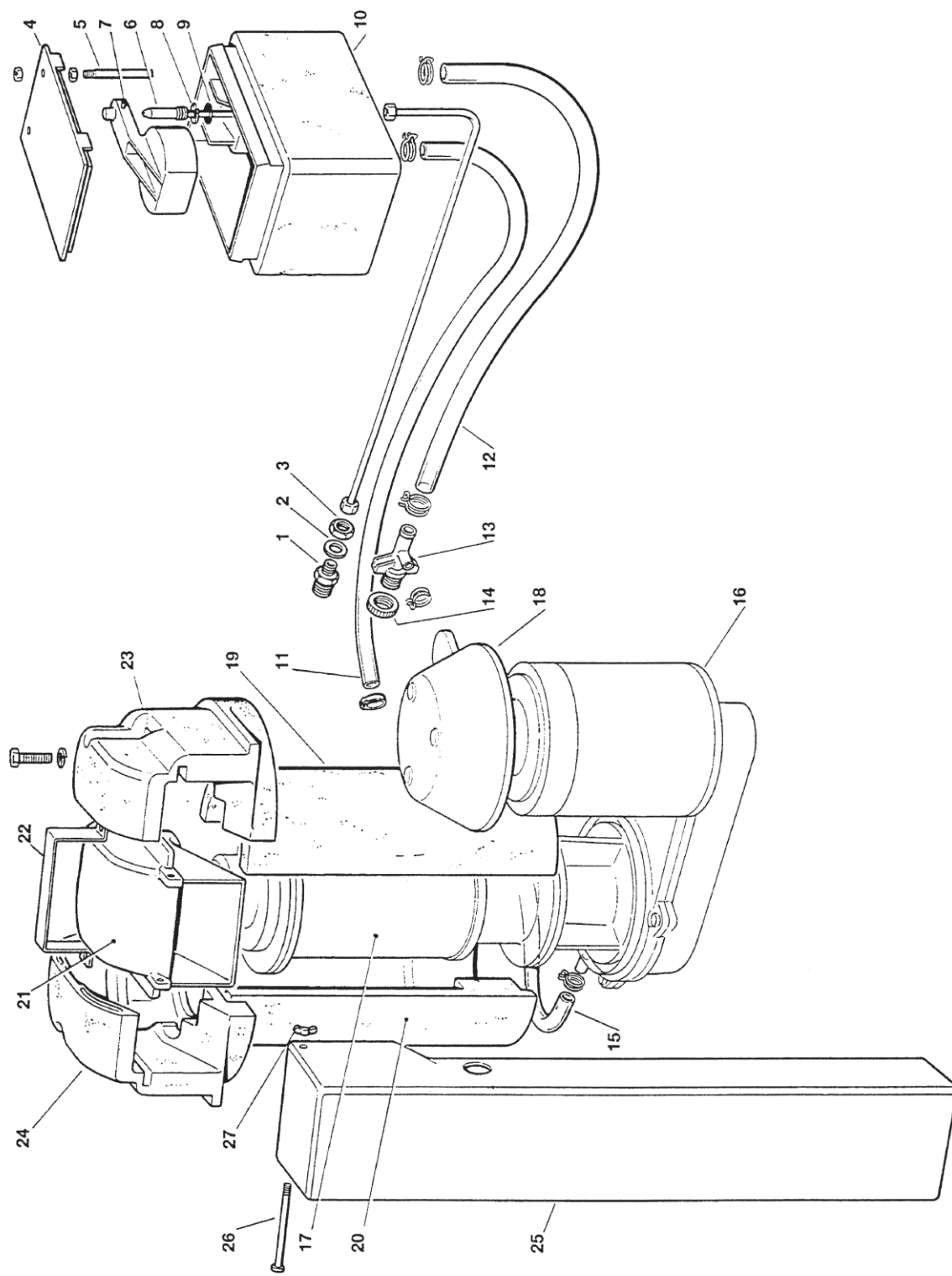


SF 300 - SF 500 - REFRIGERANT SYSTEM WATER COOLED - SISTEMA REFRIGERANTE RAFFR. AD ACQUA

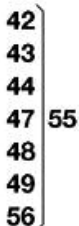
CIRCUIT FRIGORIFIQUE REFROID. PAR EAU - WASSERGEKÜHLT GEFRIERSYSTEM

ITEM NO POS NO REP. NO REF. NO	PART NO - CODICE REFERENCE - STUECK NR SF 300SF 500	DESCRIPTION	DESCRIZIONE	DESIGNATION	BESCHREIBUNG
1	19165554/0 *****	COMPRESSOR ASSY 220 V COMPRESSOR ASSY 380 V	ASSIEME COMPRESSORE 220 V ASSIEME COMPRESSORE 380 V	ENSEMBLE COMPRESSEUR 220 V ENSEMBLE COMPRESSEUR 380 V	KOMPRESSOR 220 V KOMPRESSOR 380 V
5	CF 620058 78 *****	PROTECTOR 220 V PROTECTOR 380 V	PROTETTORE 220 V PROTETTORE 380 V	PROTECTEUR 220 V PROTECTEUR 380 V	SCHUTZGERÄT 220 V SCHUTZGERÄT 380 V
8	CF 620167 21	RUN CAPACITOR 220 V	CAPACITA DI MARCIA 220 V	CAPACITÉ PERMANENCE 220 V	BETRIEB KONDENSATOR 220 V
9	CF 620057 46	START RELAY 220 V	RELE DI AVVIAMENTO 220 V	RELAIS DE DEMARRAGE 220 V	START KONDENSATOR 220 V
10	CF 620167 47	START CAPACITOR 220 V	CAPACITA D'AVVIAMENTO 220 V	CAPACITÉ DE DEMARRAGE 220 V	START KONDENSATOR 220 V
12	CF 650109 00	VALVE BODY	CORPO VALVOLA	CORPS DE VANNE	VENTILGEHAUSE
13	CF 670012 00	VALVE PISTON	PISTONCINO VALVOLA	PISTON	VENTILKOLBEN
14	CF 650106 00	VALVE CAP	CAPPUCCIO VALVOLA	CAPUCHON DE VANNE	VENTILKLAPPE
15	CF 620495 02	WATER COOLED CONDENSER	CONDENSATORE AD ACQUA	CONDENSEUR A EAU	WASSERGEKUEHLT KONDENSATOR
18	CF 733204 00	WATER INLET FITTING	RACCORDO INGRESSO ACQUA	RACCORD ARRIVÉ D'EAU	WASSEREINLAUFSTÜCK
19	CF 400031 01	FIBER WASHER	RONDELLA IN FIBRA	RONDELLE EN FIBRE	FIBER SCHEIBE
20	CF 620111 00	WATER REGULATING VALVE	VALVOLA PRESSOSTATICA	VANNE A EAU PRESSOSTATIQUE	WASSERREGLERVENTIL
21	CF 733173 00	OUTLET VALVE FITTING	RACCORDO USCITA VALVOLA PRESS.	RACCORD SORTIE VALVE PRESS.	WASSERREGLEREABFLUSSTUECK
22	CF 281900 03	PLASTIC TUBE-PER METER	TUBO IN PLASTICA-PER METRO	TUYAU EN PLASTIQUE-POUR METRE	PLASTIK ROHR-PRO METER
24	CF 733174 00	WATER DRAIN FITTING	RACCORDO SCARICO ACQUA	RACCORD ÉVACUATION EAU	WASSERABFLUSSSCHLAUCH
25	CF 400076 00	NUT	DADO	ECROU	MUTTER
26	CF 400031 00	FIBER WASHER	RONDELLA IN FIBRA	RONDELLE EN FIBRE	FIBER SCHEIBE
27	CF 670006 01	DRIER	FILTRO DEUMIDIFICATORE	FILTRE DESHYDRATEUR	TROCKNER
28	CF 784450 01	SUCTION LINE/ACCUMULATOR	ACCUMUL. E LINEA ASPIRAZIONE	ENS. ASPIRATION/ACCUMULATEUR	SAMMLER LEITUNGEN

SF 300 - SF 500 - WATER SYSTEM AND INSULATIONS - CIRCUITO IDRAULICO ED ISOLAMENTI
CIRCUIT HYDRAULIQUE ET ISOLATIONS - WASSERKREISLAUF UND ISOLIERUNG



SF 300 - SF 500 - WATER SYSTEM AND INSULATIONS - CIRCUITO IDRAULICO ED ISOLAMENTI CIRCUIT HYDRAULIQUE ET ISOLATIONS - WASSERKREISLAUF UND ISOLIERUNGE						
ITEM NO POS NO REF. NO	PART NO - CODICE REFERENCE - STUECK NR SF 300	SF 500	DESCRIPTION	DESCRIZIONE	DESIGNATION	BESCHREIBUNG
1	CF 733205 00	CF 733205 00	WATER INLET FITTING	RACCORDO INGRESSO ACQUA	RACCORD ARRIVEE D'EAU	WASSEREINLAUFSTUECK
2	CF 400031 00	CF 400031 00	FIBER WASHER	RONDELLA IN FIBRA	RONDELLE EN FIBRE	FIBER SCHEIBE
3	CF 400030 01	CF 400030 01	NUT	DADO	ECROU	MUTTER
4	CF 660363 00	CF 660363 00	WATER RESERVOIR COVER	COPERCHIO VASCHETTA	COUVERCLE	BECKENABDECKUNG
5	CF 724215 06	CF 724215 06	WATER LEVEL METAL PIN	PERNO SENSORE LIVELLO ACQUA	DETECTEUR NIVEAU EAU	FÜHLERSTIFT-WASSERNIVEAU
6	CF 783153 00	CF 783153 00	NOZZLE	UGELLO	GICLEUR	VENTILSDUESE
7	CF 783127 00	CF 783127 00	FLOAT VALVE ASSY	ASS. GALLEGGIANTE	ENS. VANNE A FLOTTEUR	SCHWIMMERVENTIL-EINHEIT
8	CF 460038 02	CF 460038 02	CLIP RING	ANELLO SEEGER	CIRCLIP	RING
9	CF 640100 00	CF 640100 00	O RING	GUARNIZIONE OR	JOINT TORIQUE	SIMMERING
10	CF 793126 00	CF 793126 00	WATER RESERVOIR ASSY	ASS VASCHETTA GALLEGGIANTE	ENS. RÉSERVOIR	BECKEN/SCHWIMMERVENTILEINHEIT
11	CF 281222 00	CF 281222 00	PLASTIC TUBE - PER MTR	TUBO IN PLASTICA - PER METRO	TUYAU EN PLASTIQUE - POUR METRE	PLASTIK ROHR - PRO METER
12	CF 281832 00	CF 281832 00	PLASTIC TUBE - PER MTR	TUBO IN PLASTICA - PER METRO	TUYAU EN PLASTIQUE - POUR METRE	PLASTIK ROHR - PRO - PRO METER
13	CF 660224 00	CF 660224 00	WATER DRAIN FITTING	RACCORDO SCARICO ACQUA	RACCORD EVACUATION EAU	WASSERABFLUSSANSCHLUSSE
14	CF 660535 00	CF 660535 00	PLASTIC RING NUT	GHIERA IN PLASTICA	COLLIER DE SERRAGE EN PLASTIQUE	PLASTIKRINGMUTTER
15	CF 610163 02	CF 610163 02	PLASTIC TUBE	TUBO IN PLASTICA	TUYAU EN PLASTIQUE	PLASTIK ROHR
16	CF 794215 08 R	CF 794215 08 R	GEAR REDUCER ASSY	ASS. MOTORIDUTTORE	ENS. MOTOREDUCTEUR	GETRIEBEMOTOR-EINHEIT
17	CF 794298 02 R	CF 794298 00 R	FREEZER ASSY	ASS. FREEZER	ENS. FREEZER	GEFRIERZYLINDEREINHEIT
18	CF 660553 00	CF 660553 00	GEAR MOTOR PLASTIC COVER	PROTEZIONE MOTORE	PROTECTION MOTEUR	PLASTIK MOTORSCHUTZ
19	CF 060551 05	CF 650401 02	INSULATION LEFT	ISOLAMENTO SINISTRO	ISOLATION GAUCHE	GEFRIERZYLINDERISOLIERUNG-LINKS
20	CF 650401 01	CF 650401 03	INSULATION RIGHT	ISOLAMENTO DESTRO	ISOLATION DROITE	GEFRIERZYLINDERISOLIERUNG-RECHTS
21	CF 660574 00	CF 660574 00	PLASTIC ICE SPOUT	BOCCHETTA SCARICO GHIACCIO	BEC VERSEUR	AUSWURFSCHNAUZE
21A	81480086/0	81480086/0	INOX ICE SPOUT	BOCCHETTA INOX		
22	CF 725035 01	CF 725035 01	U BOLT	STAFFA	ETRIER	BÜGEL
23	CF 660758 00	CF 060551 01	SPOUT INSULATION RIGHT	ISOLAMENTO BOCC. DESTRO	ISOLATION DROITE BEC VERSEUR	AUSWURFSCHNAUZEISOLIERUNG
24	CF 660575 01	CF 660575 01	SPOUT INSULATION LEFT	ISOLAMENTO BOCC. SINISTRO	ISOLATION GAUCHE BEC VERSEUR	AUSWURFSCHNAUZEISOLIERUNG
25	CF 660573 00	CF 660573 05	PLASTIC ICE CHUTE	CONDOTTO SCARICO GHIACCIO	GOULOTTE	EIS BUNKERAUSLAUF
26	CF 724180 02	CF 724180 02	METAL ROD	TIRANTE	TIRANT	STANGE
27	CF 430083 00	CF 430083 00	WING NUT	DADO AD ALETTE	ECROU	MUTTER

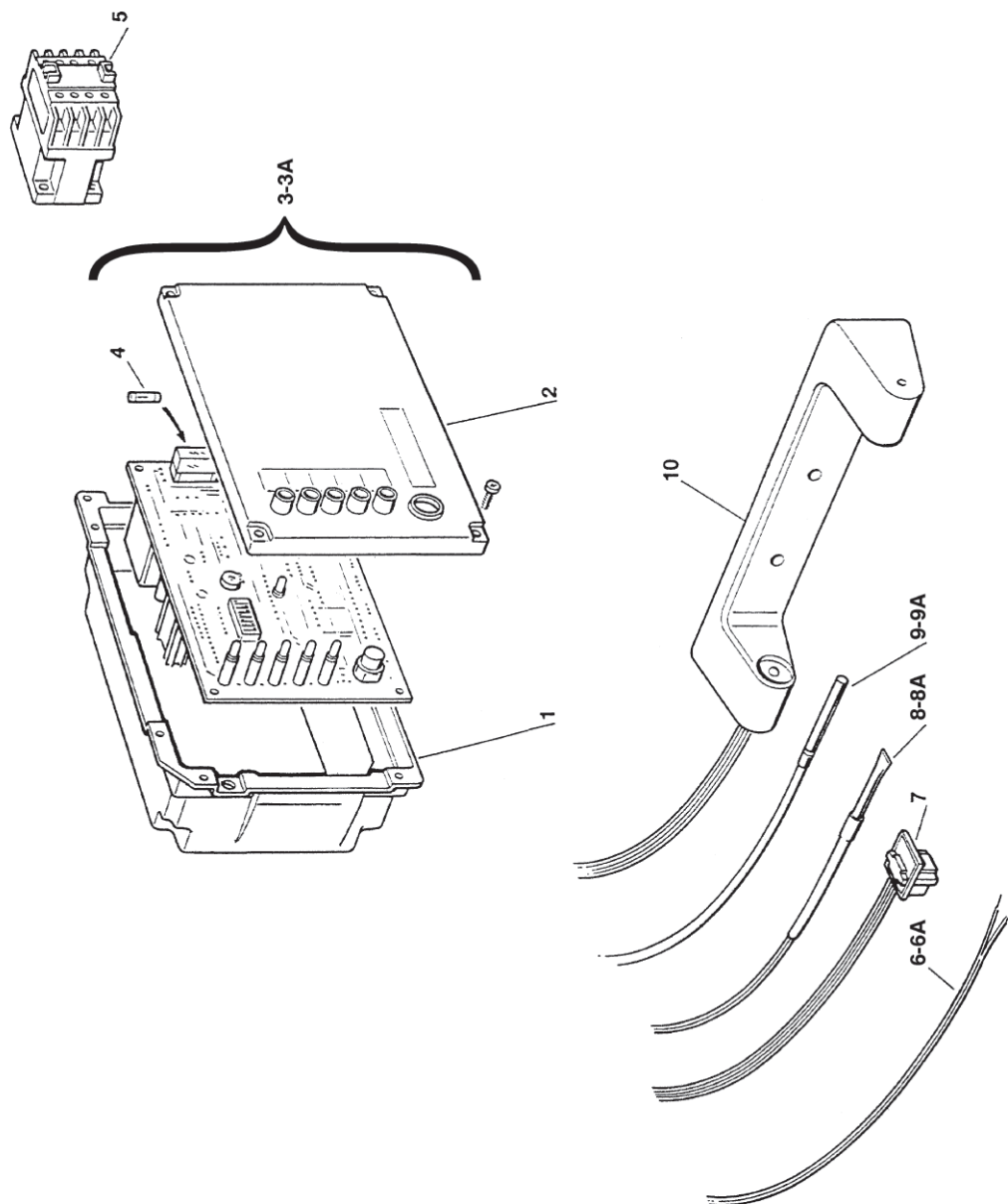


SF 300 - FREEZER AND GEAR REDUCER ASSY - ASSIEME FEEZER E RIDUTTORE ENS. FREEZER ET MOTOREDUCTEUR - GEFRIERZYLINDER UND GETRIEBEEINHEIT						
ITEM NO POS NO REP. NO REF. NO	PART NO - CODICE REFERENCE - STUECK NR		DESCRIZIONE	DESCRIPTION	DESIGNATION	BESCHREIBUNG
1	CF 0A031230 01		ASS. SCATOLA INGRANAGGI	GEAR CASE	ENS. CARTER RÉDUCTEUR	GETRIEBEGEHAUSE CPL
2	CF 060294 01		GRASSO (1 KG)	GREASE	GRAISSE (1 KG)	FETT (1 KG)
3	CF 03001251 01		VITE 5/16-18X1	SCREW 5/16-18X1	VIS 5/16-18X1	SCHRAUBE 5/16-18X1
4	CF 13000617 38		GUARNIZIONE OR	O RING	JOINT TORIQUE	O RING
5	CF 060273 06		MOTORE RIDUTTORE	MOTOR ONLY MFB	MOTEUR DU REDUCTEUR	MOTOREINHEIT
6	CF 02001606 00		PARAOLIO	OIL SEAL	PARAHUILE	DICHTUNG
7	CF 651053 00		CUSCINETTO	BEARING	ROULEMENT	LAGER
8	CF 441800 04		RONDELLA	WASHER	RONDELLE	SCHEIBE
9	CF 650341 00		FASCETTA	BRACKET	COLLIER	SHELLE
10	CF 650340 00		VENTOLA	FAN	HELICE	FLÜGEL/RAD
11	CF 794216 00R		ASS. ROTORE	ROTOR ASSY	ENS. ROTOR	ROTOR EINHEIT
12	CF 620295 00		ASS. STATORE	STATOR	ENS. STATOR	STATOREINHEIT
13	CF 460041 00		MOLLA	RING	RESSORT	FEDER
14	CF 640095 01		INSERTO IN GOMMA	RUBBER INSERT	BAGUE CAOUTCHOUC	GUMMI LAGER GEHAUSE
15	CF 650339 00		COPERCHIO	COVER	COUVERCLE	DECKEL
16	CF 400078 00		VITE	CONNECTOR	VIS	SCHRAUBE
17	CF 620520 01		CONDENSATORE	CAPACITOR	CONDENSATEUR	KONDENSATOR
18	CF 651156 00		INGRANAGGIO IN FIBRA	GEAR	ENGRANAGE EN CELERON	GETRIEBERAND & RITZEL
19	CF 03001408 24		RONDELLA	WASHER	RONDELLE	SCHEIBE
20	CF 651157 00		INGRANAGGIO INTERMEDIO	GEAR	EME ENGRANAGE ET PIGNON	GETRIEBERAND & RITZEL
21	CF 651159 00		ALBERO DI TRASMISSIONE	SHAFT	ARBRE DE SORTIE	AUSGANGSSHAFT
22	CF 03001364 00		CHIAVETTA	KEY	CLAVETTE	KEIL
23	CF 02001681 00		RONDELLA	TRUST WASHER	RONDELLE	VERTRAUEN UNTERLEGSCHIEBE
24	CF 03001363 00		ANELLO SEEGER	CLIP RING	CIRCLIP	CLIP-RING
25	CF 651158 00		INGRANAGGIO FINALE	GEAR	3EME ENGRANAGE	GETRIEBERAND
26	CF 02001680 00		CUSCINETTO A RULLINI	TRUST BEARING	ROULEMENT AGUILLE	VERTRAUEN LAGER
27	CF 02001679 00		RONDELLA	TRUST WASHER	RONDELLE	VERTRAUEN UNTERLEGSCHIEBE
28	CF 021607 01		PARAOLIO	OIL SEAL	PARAHUILE	DICHTUNG
29	CF 022853 01		PARAOLIO	OIL SEAL	PARAHUILE	DICHTUNG
30	CF 130709 02		GUARNIZIONE IN GOMMA	RUBBER GASKET	GARNITURE EN CAOUTCHOUC	GUMMIDICHTUNG
31	CF 400078 00		VITE	CONNECTOR	VIS	SCHRAUBE
32	CF 03001403 77		VITE	SCREW	VIS	SCHRAUBE
33	CF 650515 01		ALLOGGIAMENTO IN PLASTICA	MOTOR COVER	BÔITE DETECTEUR EFF. HALL	KUNSTSTOFFGEHAUSE
34	CF 640000 00		GUARNIZIONE IN SUGHERO	GASKET	JOINT PLAT	KORKDICHTUNG
34	CF 650686 00		VASSOIO RACCOGLIGOCCE	DRIP PAN	GOUELLE D'EAU	TROPFSCHALE
35	CF 060359 01		GIUNTO	KIT COUPLING MF	BAGUE D'ACCOUPLEMENT CPL	KUPPLUNG
36	CF 764007 00		SUPPORTO DI ALLUMINIO	BRACKET	SUPPORT	PASSTUECK
37	CF 420019 00		VITE	SCREW	VIS	SCHRAUBE
40	CF 784459 00		TUBO EVAPORATORE	WORM TUBE	CYLINDRE EVAPORATEUR	GEFRIERZYLINDER
41	CF 724198 02		COCLEA	AUGER	VIS SANS FIN	SCHNECKE
42	CF 650402 00		ASSIEME PREMISTOPPA	WATER SEAL	GARNITURE D'ETANCHEITE	WASSERDICHTUNGSEINHEIT
43	CF 640093 00		GUARNIZIONE OR	O RING	JOINT TORIQUE	O RING
44	CF 060688 00		KIT CUSCINETTO/SUPPORTO	BOTTOM BEARING/RETAINER KIT	ENS. LOGEMENT/PALIER/SUPPORT	KIT UNTERESLAGERGEHAUSE
45	CF 751005 01		ROMPIGHIACCIO	ICE BREAKER ONLY	BROYEUR	EISBRECHER
46	CF 263612 00		GRASSO IDROREPELL.	GREASE	GRAISSE	FETT
47	CF 640093 02		GUARNIZIONE OR	O RING	JOINT TORIQUE	O RING
48	CF 640093 03		GUARNIZIONE OR	O RING	JOINT TORIQUE	O RING
49	CF 651058 00		CUSCINETTO SUPERIORE	BEARING	PALIER SUPERIEUR	OBERESLAGER
50	CF 423915 00		VITE	SCREW	VIS	SCHRAUBE
51	CF 660507 00		CALOTTA IN PLASTICA	CUP	CALOTTE	KUGELHAUBE
52	CF 420019 00		VITE	SCREW	VIS	SCHRAUBE
54	CF 784476 01		ASS. SUPPORTO MAGNETE	MAGNETO ASSY	ENS. SUPPORT DU MAGNETO	MAGNETHALTER CPL
55	CF 060692 01		KIT CUSCINETTI + PREMISTOPPA	KIT BEARING + SEAL MF	KIT PALIERS + GARNITURE	KIT LAGER + WASSER DICHTUNG
56	CF 263612 00		GRASSO IDROREPELL.	GREASE	GRAISSE	FETT

SF 500 - FREEZER AND GEAR REDUCER ASSY - ASSIEME FEEZER E RIDUTTORE
ENS. FREEZER ET MOTOREDUCTEUR - GEFRIERZYLINDER UND GETRIEBEEINHEIT

ITEM NO POS NO REP. NO REF. NO	PART NO - CODICE REFERENCE - STUECK NR		DESCRIZIONE	DESCRIPTION	DESIGNATION	BESCHREIBUNG
	less to NS 23749	up to NS 23749				
1	CF 0A031230 01	CF 0A031230 01	ASS. SCATOLA INGRANAGGI	GEAR CASE	ENS. CARTER RÉDUCTEUR	GETRIEBEGEHAUSE CPL
2	CF 060294 01	CF 060294 01	GRASSO (1 KG)	GREASE	GRAISSE (1 KG)	FETT (1 KG)
3	CF 03001251 01	CF 03001251 01	VITE 5/16-18X1	SCREW 5/16-18X1	VIS 5/16-18X1	SCHRAUBE 5/16-18X1
4	CF 13000617 38	CF 13000617 38	GUARNIZIONE OR	O RING	JOINT TORIQUE	O RING
5	CF 060273 06	CF 060273 06	MOTORE RIDUTTORE	MOTOR ONLY MFB	MOTEUR DU REDUCTEUR	MOTOREINHEIT
6	CF 02001606 00	CF 02001606 00	PARAOLIO	OIL SEAL	PARAHUILE	DICHTUNG
7	CF 651053 00	CF 651053 00	CUSCINETTO	BEARING	ROULEMENT	LAGER
8	CF 441800 04	CF 441800 04	RONDELLA	WASHER	RONDELLE	SCHEIBE
9	CF 650341 00	CF 650341 00	FASCETTA	BRACKET	COLLIER	SHELLE
10	CF 650340 00	CF 650340 00	VENTOLA	FAN	HELICE	FLÜGEL/RAD
11	CF 794216 00R	CF 794216 00R	ASS. ROTORE	ROTOR ASSY	ENS. ROTOR	ROTOR EINHEIT
12	CF 620295 00	CF 620295 00	ASS. STATORE	STATOR	ENS. STATOR	STATOREINHEIT
13	CF 460041 00	CF 460041 00	MOLLA	RING	RESSORT	FEDER
14	CF 640095 01	CF 640095 01	INSERTO IN GOMMA	RUBBER INSERT	BAGUE CAOUTCHOUC	GUMMI LAGER GEHAUSE
15	CF 650339 00	CF 650339 00	COPERCHIO	COVER	COUVERCLE	DECKEL
16	CF 400078 00	CF 400078 00	VITE	CONNECTOR	VIS	SCHRAUBE
17	CF 620520 01	CF 620520 01	CONDENSATORE	CAPACITOR	CONDENSATEUR	KONDENSATOR
18	CF 651156 00	CF 651156 00	INGRANAGGIO IN FIBRA	GEAR	ENGRANAGE EN CELERON	GETRIEBERAND & RITZEL
19	CF 03001408 24	CF 03001408 24	RONDELLA	WASHER	RONDELLE	SCHEIBE
20	CF 651157 00	CF 651157 00	INGRANAGGIO INTERMEDIO	GEAR	EME ENGRANAGE ET PIGNON	GETRIEBERAND & RITZEL
21	CF 651159 00	CF 651159 00	ALBERO DI TRASMISSIONE	SHAFT	ARBRE DE SORTIE	AUSGANGSSHAFT
22	CF 03001364 00	CF 03001364 00	CHIAVETTA	KEY	CLAVETTE	KEIL
23	CF 02001681 00	CF 02001681 00	RONDELLA	TRUST WASHER	RONDELLE	VERTRAUEN UNTERLEGSCHIEBE
24	CF 03001363 00	CF 03001363 00	ANELLO SEEGER	CLIP RING	CIRCLIP	CLIP-RING
25	CF 651158 00	CF 651158 00	INGRANAGGIO FINALE	GEAR	EME ENGRANAGE	GETRIEBERAND
26	CF 02001680 00	CF 02001680 00	CUSCINETTO A RULLINI	TRUST BEARING	ROULEMENT AGUILLE	VERTRAUEN LAGER
27	CF 02001679 00	CF 02001679 00	RONDELLA	TRUST WASHER	RONDELLE	VERTRAUEN UNTERLEGSCHIEBE
28	CF 021607 01	CF 021607 01	PARAOLIO	OIL SEAL	PARAHUILE	DICHTUNG
29	CF 022853 01	CF 022853 01	PARAOLIO	OIL SEAL	PARAHUILE	DICHTUNG
30	CF 130709 02	CF 130709 02	GUARNIZIONE IN GOMMA	RUBBER GASKET	GARNITURE EN CAOUTCHOUC	GUMMIDICHTUNG
31	CF 400078 00	CF 400078 00	VITE	CONNECTOR	VIS	SCHRAUBE
32	CF 03001403 77	CF 03001403 77	VITE	SCREW	VIS	SCHRAUBE
33	CF 650515 01	CF 650515 01	ALLOGGIAMENTO IN PLASTICA	MOTOR COVER	BÔITE DETECTEUR EFF. HALL	KUNSTSTOFFGEHAUSE
34	CF 640000 00	CF 640000 00	GUARNIZIONE IN SUGHERO	GASKET	JOINT PLAT	KORKDICHTUNG
34	CF 650686 00	CF 650686 00	VASSOIO RACCOGLIGOCCE	DRIP PAN	GOUELLE D'EAU	TROPFSCHALE
35	CF 060359 01	CF 060359 01	GIUNTO	KIT COUPLING MF	BAGUE D'ACCOUPLEMENT CPL	KUPPLUNG
36	CF 764007 00	CF 764007 01	SUPPORTO DI ALLUMINIO	BRACKET	SUPPORT	PASSTUECK
37	CF 420019 00	CF 420019 00	VITE	SCREW	VIS	SCHRAUBE
40	CF 784456 00	CF 784456 00	TUBO EVAPORATORE	WORM TUBE	CYLINDRE EVAPORATEUR	GEFRIERZYLINDER
41	CF 724198 03	CF 724198 03	COCLEA	AUGER	VIS SANS FIN	SCHNECKE
42	CF 650402 00	CF 650402 00	ASSIEME PREMISTOPPA	WATER SEAL	GARNITURE D'ETANCHEITE	WASSERDICHTUNGSEINHEIT
43	CF 640093 00	CF 640093 00	GUARNIZIONE OR	O RING	JOINT TORIQUE	O RING
44	CF 060688 00	CF 060527 01	KIT CUSCINETTO/SUPPORTO	BOTTOM BEARING/RETAINER KIT	ENS. LOGEMENT/PALIER/SUPPORT	KIT UNTERESLAGERGEHAUSE
45	CF 751005 01	CF 751005 01	ROMPIGHIACCIO	ICE BREAKER ONLY	BROYEUR	EISBRECHER
46	CF 263612 00	CF 263612 00	GRASSO IDROREPELL.	GREASE	GRAISSE	FETT
47	CF 640093 02	CF 640093 02	GUARNIZIONE OR	O RING	JOINT TORIQUE	O RING
48	CF 640093 03	CF 640093 03	GUARNIZIONE OR	O RING	JOINT TORIQUE	O RING
49	CF 651058 00	CF 651058 00	CUSCINETTO SUPERIORE	BEARING	PALIER SUPERIEUR	OBERESLAGER
50	CF 423915 00	CF 423915 00	VITE	SCREW	VIS	SCHRAUBE
51	CF 660507 00	CF 660507 00	CALOTTA IN PLASTICA	CUP	CALOTTE	KUGELHAUBE
52	CF 420019 00	CF 420019 00	VITE	SCREW	VIS	SCHRAUBE
54	CF 784476 01	CF 784476 01	ASS. SUPPORTO MAGNETE	MAGNETO ASSY	ENS. SUPPORT DU MAGNETO	MAGNETHALTER CPL
55	CF 060692 01	CF 060692 01	KIT CUSCINETTI + PREMISTOPPA	KIT BEARING + SEAL MF	KIT PALIERS + GARNITURE	KIT LAGER + WASSER DICHTUNG
56	CF 263612 00	CF 263612 00	GRASSO IDROREPELL.	GREASE	GRAISSE	FETT

SF 300 - SF 500 - P.C. BOARD AND SENSOR ASSY - SCHEDA ELETTRONICA E SENSORI
ENS. CARTE ELECTRONIQUE ET DETECTEURS - ELEKTRONISCHE KARTE UND TEMPERATURFUEHLERENHEIT



SF 300 - SF 500 - P.C. BOARD AND SENSOR ASSY - SCHEDA ELETTRONICA E SENSORI

ENS. CARTE ELECTRONIQUE ET DETECTEURS - ELEKTRONISCHE KARTE UND TEMPERATURFUEHLERENHEIT

ITEM NO POS NO REP. NO REF. NO	PART NO CODICE REFERENCE STUECK NR	DESCRIPTION	DESCRIZIONE	DESIGNATION	BESCHREIBUNG
1	19670528/0	CONTROL BOX	SCATOLA ELETTRICA	BOITE ELECTRIQUE	SCHALTSCHRANK
2	19190397/0	CONTROL BOX COVER	COPERCHIO SCATOLA ELETTRICA	COUVERCLE BOITE DE COMMANDE	SCHALTSCHRANK DECKEL
3	81469134/0	P.C. BOARD	SCHEDA ELETTRONICA	CARTE ELECTRONIQUE	GEDRUCKTESCHALTUNG
3A * **	CF 620462 15	NEW P.C. BOARD 2011 SF300 FROM S.N. 16546 SF500 FROM S.N. 24628	NUOVA SCHEDA ELETTRONICA 2011 SF300 DAL NR. 16546 SF500 DAL NR. 24628	NOUV. CARTE ELECTRONIQUE 2011 SF300 FROM S.N. 16546 SF500 FROM S.N. 24628	GEDRUCKTESCHALTUNG 2011 SF300 FROM S.N. 16546 SF500 FROM S.N. 24628
4	CF 630015 09 CF 630015 10	FUSE (100 mA) FUSE (16 A)	FUSIBLE (100 mA) FUSIBLE (16 A)	FUSIBLE (100 mA) FUSIBLE (16 A)	SCHMELZSICHERUNG (100 mA) SCHMELZSICHERUNG (16 A)
5	CF 630119 00 CF 630124 05	CONTACTOR SF300 CONTACTOR SF 500	TELERUTTORE SF 300 TELERUTTORE SF 500	CONTACTEUR SF 300 CONTACTEUR SF 500	SCHALTSCHÜTZ SF 300 SCHALTSCHÜTZ SF 500
6	29070018/0	WATER LEVEL SENSOR	SENSORE LIVELLO ACQUA	CAPTEUR NIVEAU EAU	WASSERNIVEAUFÜHLER
6A	CF 620519 02	WATER LEVEL SENSOR FOR NEW P.C. BOARD 2011	SENSORE LIVELLO ACQUA PER NUOVA SCHEDA ELETTRONICA 2011	CAPTEUR NIVEAU EAU NOUV. CARTE ELECTRONIQUE 2011	WASSERNIVEAUFÜHLER GEDRUCKTESCHALTUNG 2011
7	29070015/0	HALL EFFECT SENSOR	SENSORE EFFETTO HALL	CAPTEUR EFFECT HALL	HALL EFFEKT-FÜHLER
8	29070014/0	CONDENSER TEMP. SENSOR	SENSORE TEMP. CONDENSATORE	CAPTEUR TEMP. CONDENSEUR	KONDENSATORTEMPERATURFUEHLER
8A	CF 620519 00	CONDENSER TEMP. SENSOR FOR NEW P.C. BOARD 2011	SENSORE TEMP. CONDENSATORE PER NUOVA SCHEDA ELETTRONICA 2011	CAPTEUR TEMP. CONDENSEUR NOUV. CARTE ELECTRONIQUE 2011	KONDENSATORTEMPERATURFUEHLER GEDRUCKTESCHALTUNG 2011
9	29070013/0	EVAPORATOR TEMP. SENSOR	SENSORE TEMP. EVAPORATORE	CAPTEUR TEMP. ÉVAPORATEUR	VERDAMPFERTEMPERATURFUEHLER
9A	CF 620519 01	EVAPORATOR TEMP. SENSOR FOR NEW P.C. BOARD 2011	SENSORE TEMP. EVAPORATORE PER NUOVA SCHEDA ELETTRONICA 2011	CAPTEUR TEMP. ÉVAPORATEUR NOUV. CARTE ELECTRONIQUE 2011	VERDAMPFERTEMPERATURFUEHLER GEDRUCKTESCHALTUNG 2011
10	CF 650674 02	ICE LEVEL CONTROL ASSY	ASS. CONTR. LIVELLO GHIACCIO	ENS. DETECTEUR NIVEAU GLACE	EISNIVEAUFUEHLERENHEIT

COMPRESSOR CHART - TABELLA COMPRESSORI - TABLEAU COMPRESSEUR - KOMPRESSOR KARTE							
MODEL MODELLO MODELE MODELL	VOLTS TENSIONE TENSION SPANNUNG	COMPRESSOR MODEL MODELLO COMPRESSORE TYPE COMPRESSEUR KOMPRESSOR TYP	COMPRESSOR COMPRESSORE COMPRESSEUR KOMPRESSOR	RELAY RELO RELAIS RELAIS	PROTECTOR PROTETTORE PROTECTEUR SCHUTZGERAT	START CAPACITOR CAPACITA D'AVV. CAPACITÉ DE DEMARRAGE START KONDENSATOR	RUN CAPACITOR CAPACITÀ DI MARCIA CAPACITÉ PERMANENCE BETRIEB KONDENSATOR
SF 300 SF 500	115/60/1 115/60/1						
SF 300 SF 500	230/60/1 230/60/1	U.H. CAJ 9510 Z U.H. CAJ 4519 Z	CF 670099 09 CF 670099 13	CF 620057 050 CF 6920057 54	CF 620058 81 CF 620058 85	CF 620167 26 CF 620167 00	CF 62016721 CF 620167 24
SF 300 SF 500	230/50/1 230/50/1	U.H. CAJ 9510 Z U.H. CAJ 4519 Z	19165554/0 81453661/0	CF 620057 46 CF 620057 47	CF 620058 78 CF 620058 57	CF 620167 47 CF 620767 50	CF 620167 21 CF 620167 24
SF 500	400/50/3	U.H. TAJ 4519 Z	CF 670099 06	*****	CF 620058 58	*****	*****

COMPRESSOR CHART - TABELLA COMPRESSORI - TABLEAU COMPRESSEUR - KOMPRESSOR KARTE									
MODEL MODELLO MODELE MODELL	VOLTS TENSIONE TENSION SPANNUNG	CONTACTOR TELERUTTORE CONTACTEUR SCHALTSCHÜTZ	GEAR MOTOR ASSY ASS. MOTORIDUTTORE ENS. MOTOREDUCTEUR GETRIEBEMOTOREINHEIT	DRIVE MOTOR MOTORE RIDUTTORE MOTEUR REDUCTEUR MOTOREINHEIT	FAN MOTOR ONLY MOTORE VENTILATORE MOTEUR VENTILATEUR LUFTER MOTOR	DRIVE MOTOR CAPACITOR CAPACITA MOTORE RIDUTT. CONDENSAT. MOTEUR REDUCT. KONDENSATOR	P.C. BOARD SCHEDA ELETTRONICA CARTE ELECTRONIQUE ELEKTRONISCHE KARTE	RECYCLED PCB SCHEDA EL. RICICL. CARTE ELECTR. RIC. REGENERIERTE PLATINE	STATOR STATORE STATOR STATOR
SF 300	115/60/1	CF 630124 07	CF 794215 09 R	CF 060273 07	CF 620419 05	CF 620292 01	CF 620403 04	CF 620403 10	620295 01
SF 500	115/60/1	CF 620124 07	CF 794215 09 R	CF 060273 07	*****	CF 620292 01	CF 620403 04		620295 01
SF 300	230/60/1	CF 630119 00	CF 794215 08 R	CF 060273 06	CF 620419 04	CF 620403 03	29070012/0	29070012/U	CF 620295 00
SF 500	230/60/1	CF 620124 05	CF 794215 08 R	CF 060273 06	CF 620419 06	CF 620292 03			CF 620295 00
SF 300	230/50/1	CF 630119 00	CF 794215 08 R	CF 060273 06	CF 620419 04	CF 620292 03	29070012/0	29070012/U	CF 620295 00
SF 500	230/50/1	CF 620124 05	CF 794215 08 R	CF 060273 06	CF 620419 06	CF 620292 03			CF 620295 00
SF 500	400/50/3	CF 620124 05	CF 794215 08 R	CF 060273 06	CF 620419 06	CF 620292 03	29070012/0	29070012/U	CF 620295 00

Notes _____

Castel MAC SpA

Via del Lavoro, 9 C.P. 172
I - 31033 Castelfranco Veneto (TV) Italy
Tel. +39 0423 738455 - Fax +39 0423 722811
E-mail: service@castelmac.it
Web-site: www.castelmac.it

Cod. 71503367/0 - 07/2013 - **Rev. 006**

