

ELETTROBAR

**SPARE PARTS CATALOGUE
ERSATZTEILKATALOG
CATALOGUE PIECES DETACHEES
CATALOGO PARTI RICAMBIO
CATALOGO DE PIEZAS DE RECAMBIO
CATALOGO PEÇAS DE REPOSICAO**

FAST 180

04-03-2013

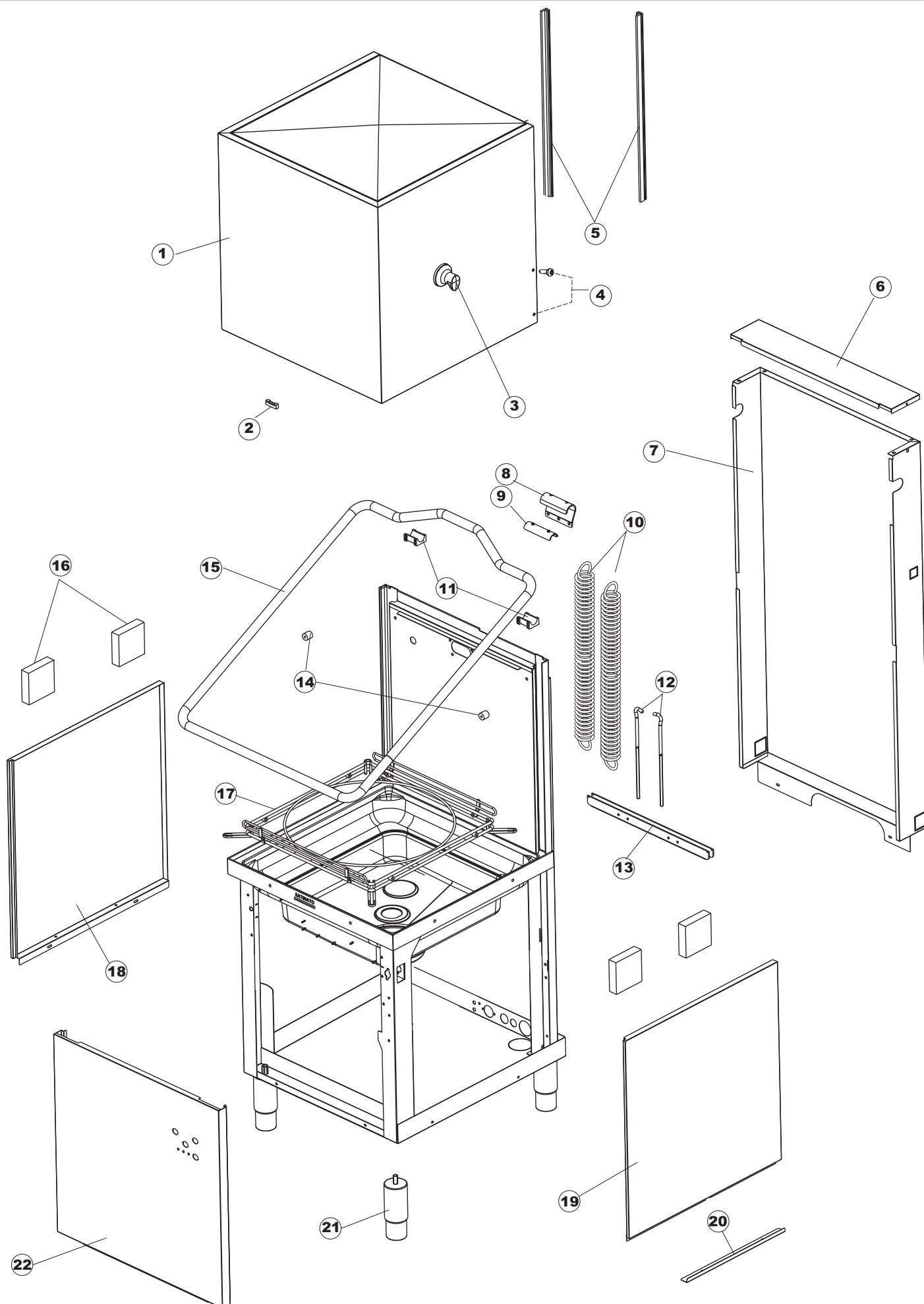
Tav.1: Carrozzeria
Tav.2: Impianto elettrico
Tav.3: Componenti in vasca
Tav.4: Circuito di lavaggio
Tav.5: Circuito di risciacquo
Tav.6: Lance di lavaggio
Tav.7: Pompa di lavaggio
Tav.8: Pompa di scarico

Tav.1: Machine body
Tav.2: Electrical components
Tav.3: Components in the tank
Tav.4: Washing circuit
Tav.5: Rinsing circuit
Tav.6: Washing arms
Tav.7: Washing pump
Tav.8: Draining pump

Tab.1: Carrocería
Tab.2: Instalación eléctrica
Tab.3: Componentes en cuba
Tab.4: Circuito de lavado
Tab.5: Circuito d'enjuague
Tab.6: Brazos de lavado
Tab.7: Bomba de lavado
Tab.8: Bomba de descarga

Tab.1: Carrosserie
Tab.2: Installation électrique
Tab.3: Composants de cuve
Tab.4: Circuit de lavage
Tab.5: Circuit de rinçage
Tab.6: Bras de lavage
Tab.7: Pompe de lavage
Tab.8: Pompe de vidange

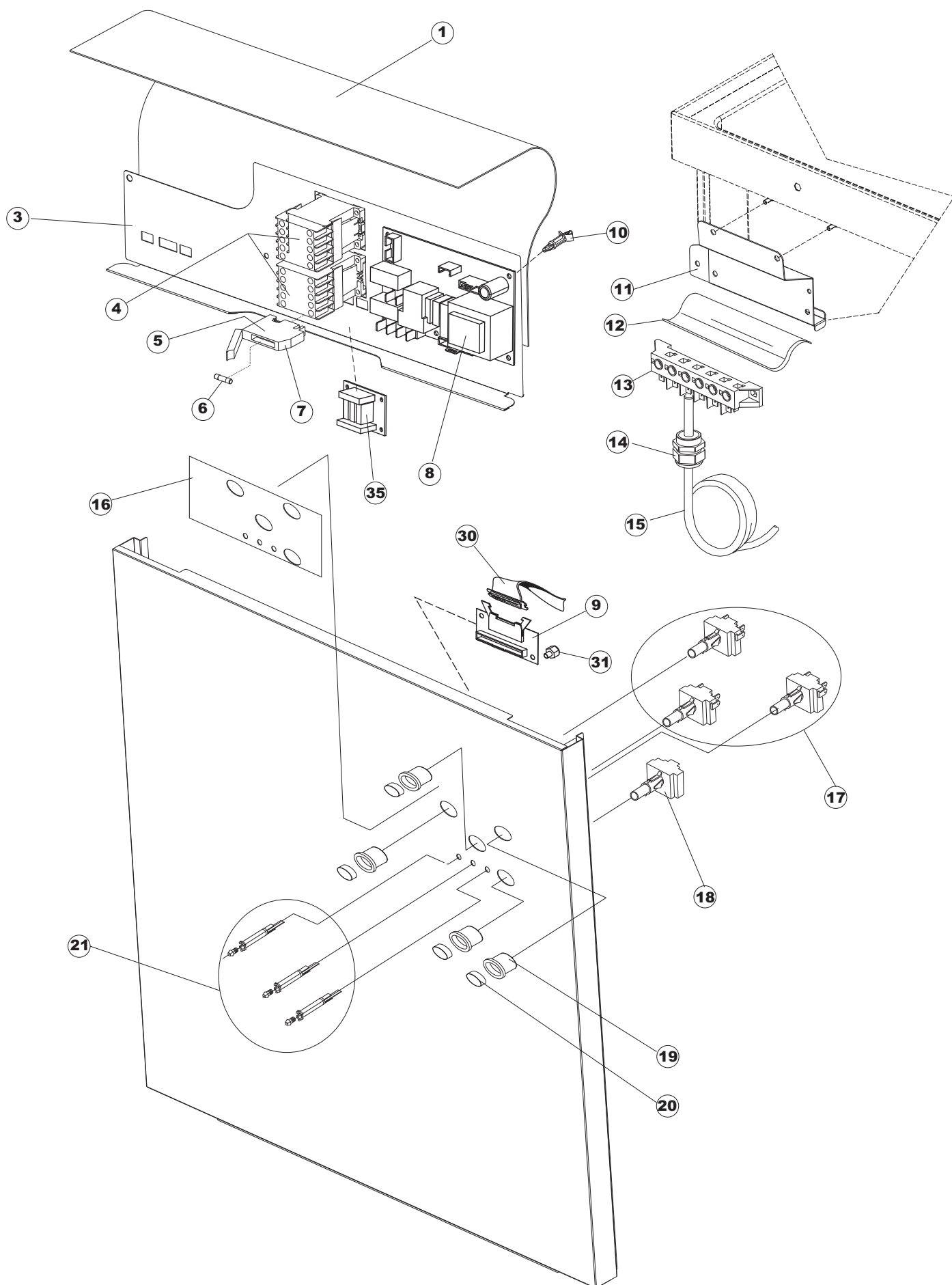
Taf.1: Verkleidung
Taf.2: Elektrische Anlage
Taf.3: Bauteile im Waschtank
Taf.4: Spuelschaltung
Taf.5: Nachspuelschaltung
Taf.6: Wascharme
Taf.7: Spuelpumpe
Taf.8: Laugenpumpe



Listino componenti per pagina 1

1	69141	GRUPPO CAPPa SQUADRATA LA50 COMPLETA CAPOT HAUBE HOOD GRUPO CAMPANA CUADRADA LA50 COMPLETA	
2	927088	MAGNETE PER MICROINTERRUTTORE CAPPa MAGNETO POUR MICRO HOTTE MAGNET FUER HAUBE-MIKROSCHALTER MAGNET FOR HOOD MICROSWITCH IMAN PARA MICROINTERRUPTOR	
3	80632B	SUPPORTO DI SOLLEVAMENTO CAPPa support de levage capuche SUPPORT HEBE HOOD SUPPORT LIFTING HOOD SOPORTE DE ELEVACIÓN CAMPANA	
4	80998	VITE PLASTICA M4X6 (DIN933) GOLD VIS SCHRAUBE SCREW tornillo	
5	80069	GUIDA CAPPa guide coulissant CAPOT HAUBE Schiebeführung HOOD DRIVE guía de deslizamiento CAPUCHA	
6	80638	PANNELLO POSTERIORE SUPERIORE PANNEAU ARRIERE SUPERIOR HINTERE ABDECKUNGSPLATTE TOP BACK PANEL PANEL TRASERO SUPERIOR	
7	80162	PANNELLO POSTERIORE PANNEAU ARRIERE RUECKWAND BACK PANEL PANEL TRASERO	
8	80275	STAFFA AGGANCIO MOLLE ST - FINITA ETRIER ACCROCHAGE RESSORTS ST - COMPLET KOMPLETTE FEDER- AUFHAENGEVORRICHTUNG COIL HOOKING BRACKET - COMPLETE ESCUADRA	
9	80277	PATTINO AGGANCIO MOLLE PATIN ACCROCHAGE RESSORTS FEDERBEFESTIGUNGSSCHLITTE SPRING HOOKING SLIDE ESCUADRA	
10	926007	MOLLA ACCIAIO A TRAZIONE PER LAVASTOVI- RESSORT DE TRACTION EN ACIER POUR LAVE- ZUGFEDER AUS STAHL FUER GESCHIRRSPUELER EXTENSION STEEL SPRING FOR DISHWASHER MUELLE TRACC. CAPOTA f5 100/120/140	
11	80190	SQUADRA SUPP.MANIGLIONE EQUERRE BEF.WINKEL BRACKET ESCUADRA SOP. MANIJA	
12	926009	GANCIO DI REGOLAZIONE MOLLE CAPPa CROCHET DE REGLAGE RESSORTS FEDER-EINSTELLUNGSHAKEN SPRING ADJUSTMENT HOOK GANCHO REGULACION MUELLE	
13	80023	SQUADRA EQUERRE BEF.WINKEL BRACKET ESCUADRA	
14	80105 <i><u>Recommended spare parts</u></i>	TAMPONE FERMA CAPPa SHOCK-ABSORBER FOR CAPOT PUFFER FÜR DURCHSCHUBSPÜLAUTOM. PARE-CHOCS CAPOT GUARDAGOLPES CAPOT	
15	80027	MANIGLIONE GROS POIGNÉE BIG HANDGRIFF BIG HANDLE ASA	

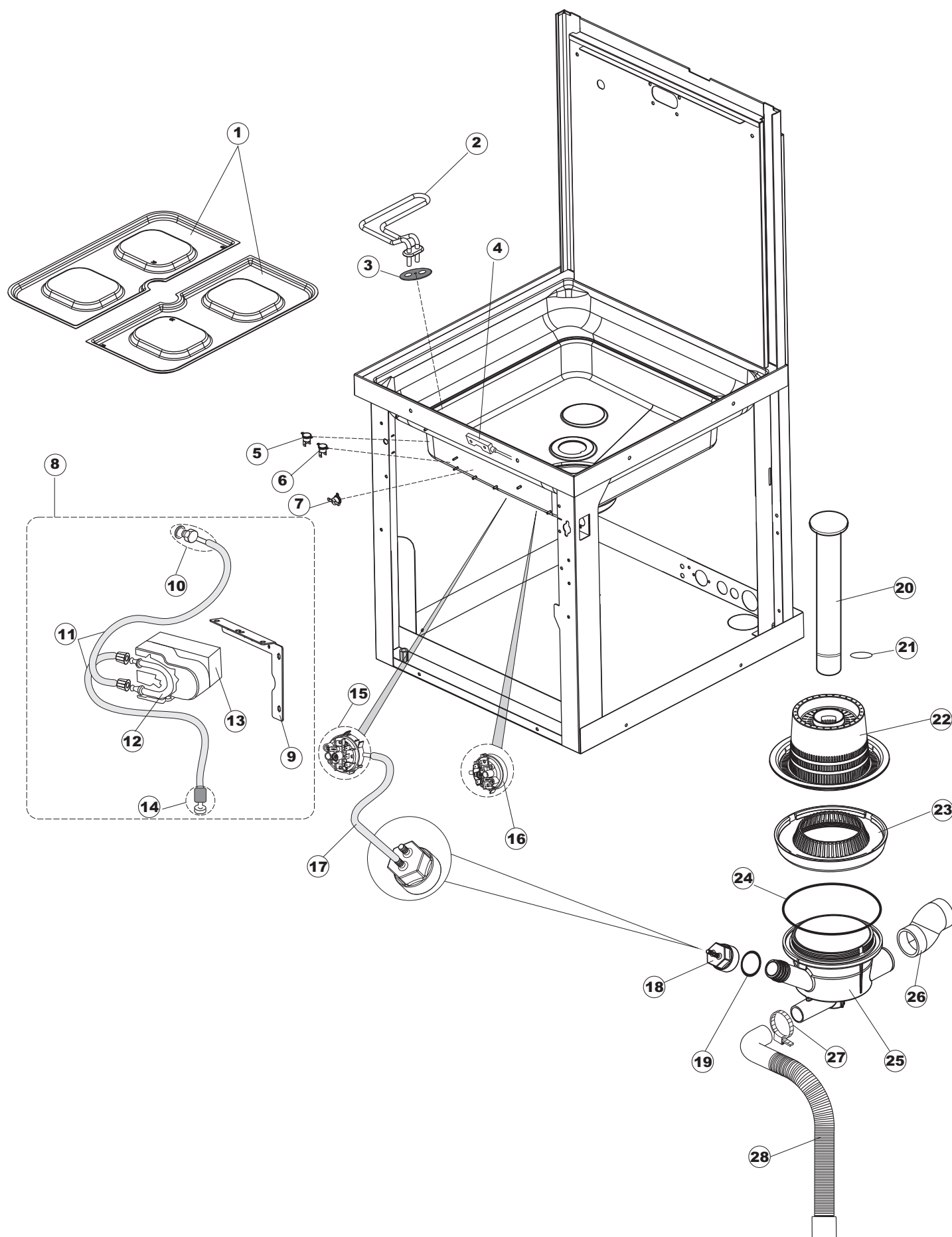
16	41042	TAMPONE ADESIVO TEMPON ADHÉSIF KLEBENPER SCHLEGER ADHESIVE PLUG ESPESORE ADHESIVO PANELES LATERALES LP	
17	80240	TELAIO PORTACESTO SUPPORT PANIER RAHMEN RACK FRAME BASTIDOR PORTACESTA CAPOT D1000	
18	80071	PANNELLO LATERALE SINISTRO PANNEAU LATERAL GAUCHE LINKEN SEITENWAND LEFT SIDE PANEL PANEL LATERAL IZQUIERDO	
19	80072	PANNELLO LATERALE DESTRO PANNEAU LATERAL DROITE REICHT SEITENWAND RIGHT SIDE PANEL PANEL LATERAL DERECHO	
20	80078	STAFFA SOTTOPIANI GOLD PG FINITO console de support Stützwinkel support bracket ESC. FIJACION APOYOS SUPERFICIES GOLD PG	
21	926117	PIEDE VERRIN FUESS FOOT PATA REGULABLE X CAPOTA 3LINEA	
22	69100	PANNELLO ANTERIORE PANNEAU AVANT VORDERPANEEL FRONT PANEL PANEL FRONTAL	



Listino componenti per pagina 2

1	214086	PROTEZIONE TRASPARENTE PER IMPIANTO PROTECTION TRANSPARENTE POUR INSTALLA- DURCHSICHTIGER SCHUETZ FUER ELEKTRISCHE TRANSPARENT PROTECTION FOR ELECTRIC PROT. EL. TELA TRANSP. 463/503	
3	69401	PANNELLO PER COMPONENTI ELETTRICI PANNEAU DE COMPOSANTS ÉLECTRIQUES PANEL FÜR ELEKTRISCHE BAUTEILE PANEL FOR ELECTRICAL COMPONENTS PANEL DE COMPONENTES ELÉCTRICOS	
4	80350 <i><u>Recommended spare parts</u></i>	CONTATTORE CONTACTEUR KONTAKTGEBER CONTACTOR CONTACTOR	
5	H.228048	TAPPO PORTAFUSIBILE BOUCHON DECKEL PLUG TAPON	
6	228010 <i><u>Recommended spare parts</u></i>	FUSIBILE 5X20 T4A RITARDATO 250V FUSIBLE Sicherung FUSE FISIBLE	
7	H.228047	PORTAFUSIBILE PORTE-FUSIBLE SCHMELZSICHERUNGSTRAEGER FUSE-HOLDER PORTA-FUSIBLE	
8	215034-5	SCHEDA ELETTRONICA CARTE ELECTRONIQUE KARTE ELEKTRONIK MAIN BOARD TARJETA ELECTRÓNICA	
9	215037 <i><u>Recommended spare parts</u></i>	SCHEDA INTERFACCIA MECCANICA CARTES D'INTERFACE MÉCANIQUE SCHNITTSTELLENKARTEN MECHANICAL INTERFACE BOARD TARJETA DE INTERFAZ MECÁNICA	
10	CWP2	PIEDINI SUPPORTO SCHEDA ELETTRONICA VERRIN FUESS FOOT PATA	
11	69063	STAFFA MORSETTIERA console de support Stützwinkel support bracket SOPORTE BORNERO	
12	214088	TENDINA PVC PROTEZIONE CABLAGGIO RIDEAU PVC PROTECTION ÉLECTRIQUE PVC-VORHANG ELEKTRISCHE SCHUTZ PVC CURTAIN FOR ELECTRIC PROTECTION PVC CORTINAS ELÉCTRICAS PROTECCIÓN	
13	220011	MORSETTIERA bornier pour le raccordement anschlussterminal TERMINAL BLOCK bloque de terminales	
14	929103	PASSACAVO PRESSE ÉTOUPE KABELVERSCHRAUBUNG CABLE GLAND PASACABLES	
15	69803	CAVO ALIMENTAZIONE 5X4MM (H07RN-F) CÂBLE ÉLECTRIQUE STROMKABEL POWER CABLE CABLE ELÉCTRICO	
16	69797	INTERFACCIA ADESIVA DI CONTROLLO INTERFACE ADHÉSIVE CONTRÔLE TASTATURFOLIEN CONTROL ADHESIVE INTERFACE INTERFAZ ADHESIVA DE CONTROL	

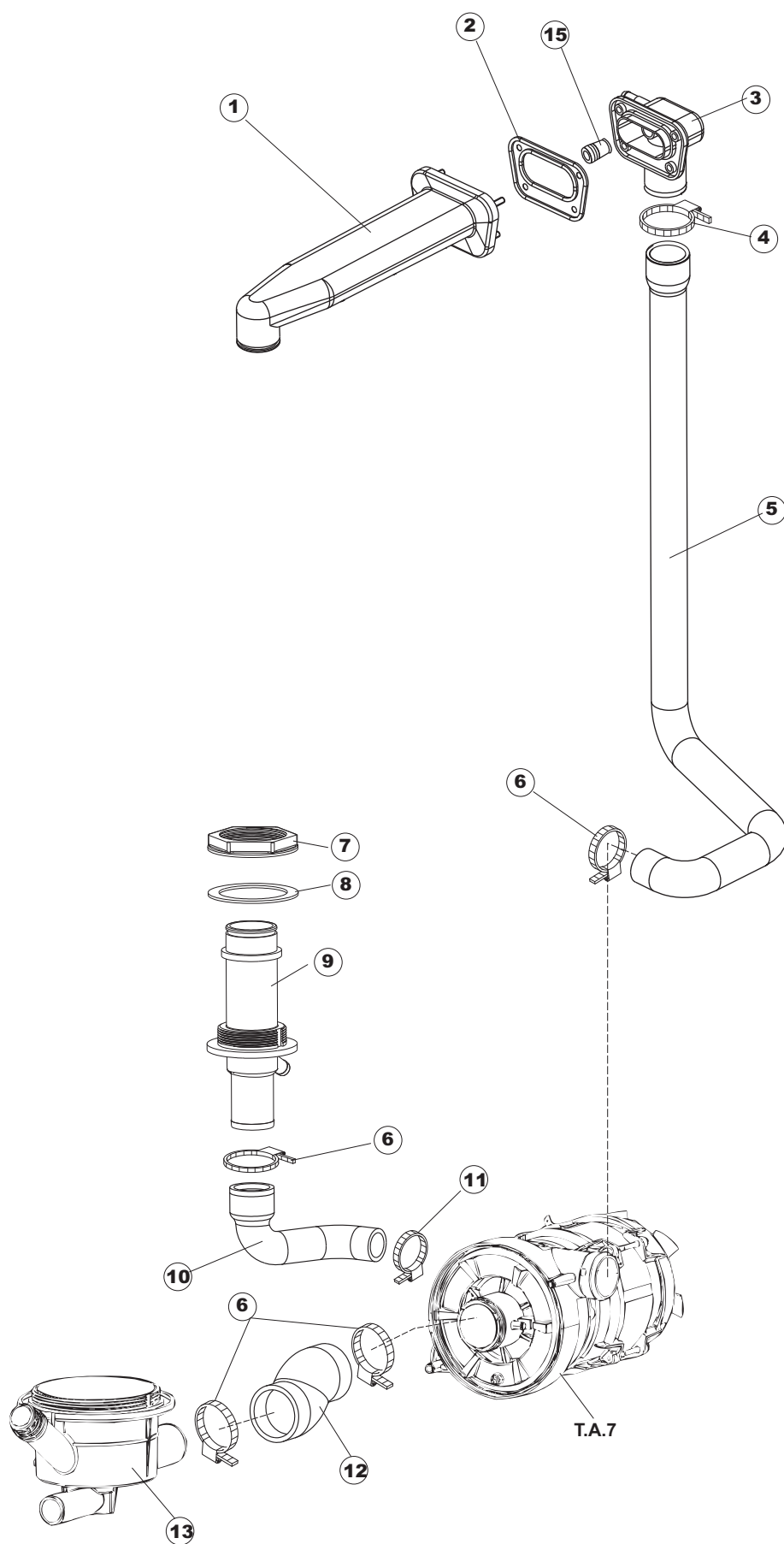
17	208010 <i><u>Recommended spare parts</u></i>	INTERRUTTORE DOPPIO CORPS DE CONTACT DOPPELTSCHALTER DOUBLE SWITCH DESVIADOR DOBLE	
18	226102	PULSANTE ELLITTICO POUSOIR ELLIPTIQUE ELLIPTISCHER DRUCKKNOPF ELLIPTICAL PUSH-BUTTON ESTRUCTURA FIJA CM X TECLA ELIPTICA	
19	226128 <i><u>Recommended spare parts</u></i>	CORPO PULSANTE BOUTON CORPS Körper-Taste push button case CUERPO PULSADOR	
20	227079	TASTO GOFFRATO BIANCO BOTON drucktaste BUTTON TECLA GOFRADE BLANCA (0774) D25	
21	216029 <i><u>Recommended spare parts</u></i>	SPIA ARANCIO LAMPE TEMOIN KONTROLLAMPE PILOT LAMP LAMPARA TESTIGO TB/06/SQ3 NARANJA	
30	80934 <i><u>Recommended spare parts</u></i>	CAVO FLAT CABLE FLAT Flachbandkabel FLAT FLAT CABLE CABLE FLAT	
31	461028 <i><u>Recommended spare parts</u></i>	PIEDINO PLAST.SCHEDA 5309AA00XS pied support de carte électronique Stützfessß elektronische Karte foot board support sujección pie tarjeta electrónica	
35	215036 <i><u>Recommended spare parts</u></i>	SCHEDA ELETTRONICA CARTE ELECTRONIQUE KARTE ELEKTRONIK MAIN BOARD TARJETA ELECTRÓNICA	Optional



Listino componenti per pagina 3

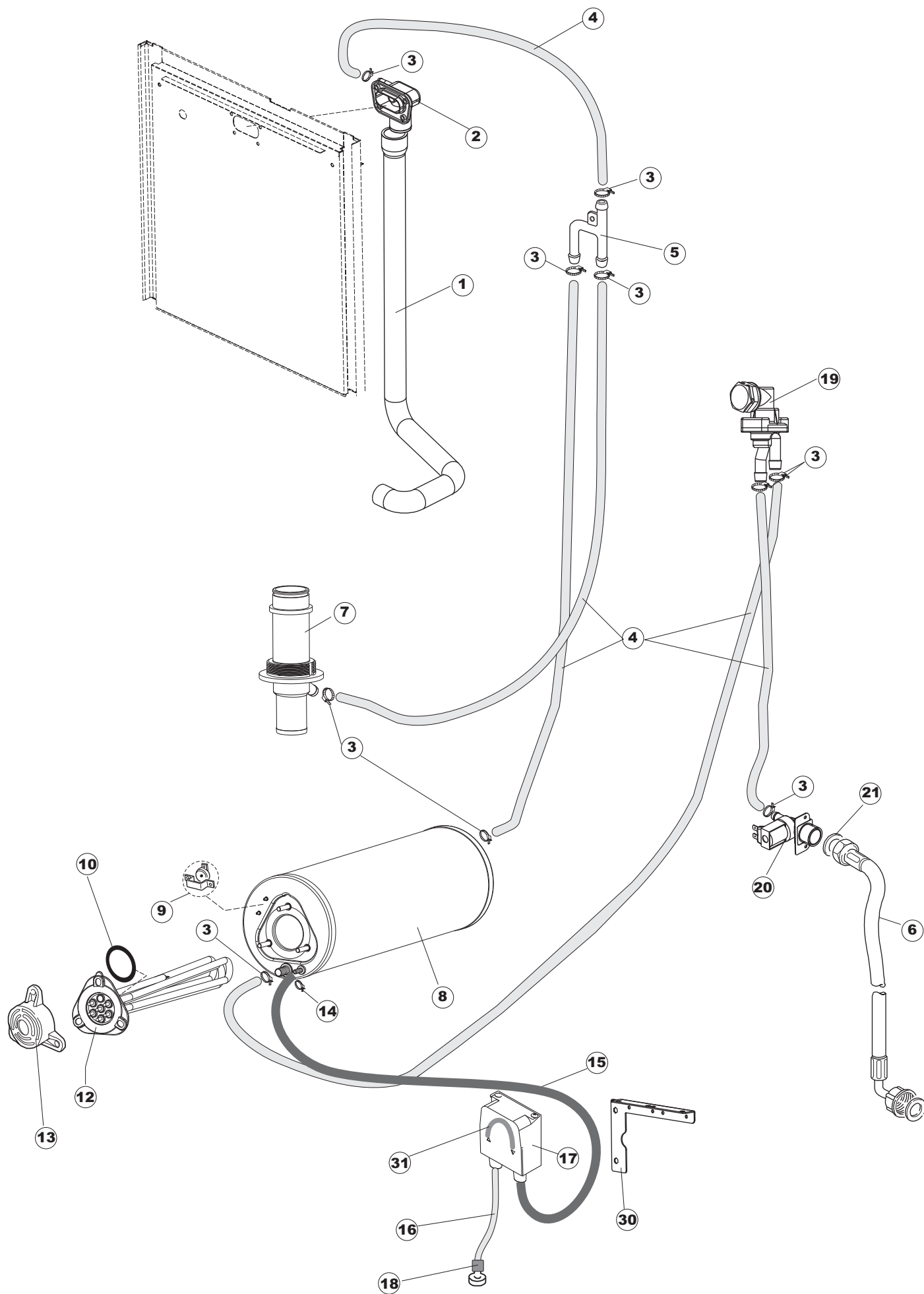
1	121146	FILTRO FILTRE FILTER STAINER FILTRO	
2	230118 <u>Recommended spare parts</u>	RESISTENZA VASCA 2100W-230V RÉSISTANCE DE CUVE TANKHEIZUNG TANK HEATING ELEMENT RESISTENCIA CUBA	
3	437086	GUARNIZIONE RESISTENZA VASCA JOINT RESISTANCE CUVE DICHTUNG DER TANKHEIZUNG PACKING OF THE TANK RESISTANCE JUNTA RESISTENCIA CUBETA	
4	80871 <u>Recommended spare parts</u>	MICRO MAGNETICO CONTACTE MAGNETIQUE TUERKONTAKTSCHALTER MAGNETIC DOOR SWITCH CONTACTO MAGNETICO	
5	236052 <u>Recommended spare parts</u>	TERMOSTATO 90°+/-3°C THERMOSTAT THERMOSTAT THERMOSTAT TERM.CONTACTO CALENT./L.90°+/-3°(
6	926189 <u>Recommended spare parts</u>	TERMOSTATO 95°C THERMOSTAT DE SURETE' A CONTACT KONTAKT-SICHERUNGSTHERMOSTAT (236039) CONTACT SAFETY-THERMOSTAT (REPLACES TERMOSTATO CALENTADOR SEG. 95ø	
7	236035 <u>Recommended spare parts</u>	TERMOSTATO 60°C +/-3°C THERMOSTAT CUVE A CONTACT KONTAKT-TANKTHERMOSTAT CONTACT THERMOSTAT TANK TERM.CONTACTO CUBETA/L.60°+/-3°(2611573)	
8	41953	KIT DOSATORE DETERGENTE REG. MANUALE KIT distributeur de détergent KIT Waschmittelschublade KIT detergent dispenser KIT dispensador de detergente	
9	80952	STAFFA DOSATORI console de support Stützwinkel support bracket SOPORTE DOSIFICADORES PG ACABADO	Optional
10	468151	RACCORDO DETERSIVO VASCA RACCORD EN ACIER INOXYDABLE ENTREE' ANSCHLUSSSTUECK AUS NICHTROSTENDEM STAINLESS STEEL INLET DETERGENT ELBOW, EMPALME ENTRADA JABON CPL NM * SOLDADO	Optional
11	143194 <u>Recommended spare parts</u>	TUBO 4x6 CRISTAL TRASPARENTE TUYAU SCHLAUCH PIPE MANGUITO	Optional
12	143219 <u>Recommended spare parts</u>	TUBO "SANTOPRENE" CON RACCORDO TUYAU "SANTOPRENE" ROHR "SANTOPRENE" "SANTOPRENE" PIPE TUBITO SANTOPRENE	Optional
13	209021 <u>Recommended spare parts</u>	DOSAT.PERIST.DETERG.REG.(NBR-3) DOSIFIC. PERIST.DETERGENTE REG.	Optional
14	121993	GRUPPO FILTRO+ZAVORRA DOSATORE filtre distributeur Filterspender filter aid dispenser filtro dispensador	Optional
15	224025 <u>Recommended spare parts</u>	PRESSOSTATO 125/106 PRESSOSTAT DRUCKWAECHTER PRESSURE SWITCH PRESOSTATO	

16	224023 <u>Recommended spare parts</u>	PRESSOSTATO 165/140 PRESSOSTAT DRUCKWAECHTER PRESSURE SWITCH PRESOSTATO	Drain pump
17	143131	TUBO GOMMA 4X7MM TUYAU SCHLAUCH PIPE MANGUITO	
18	107013 <u>Recommended spare parts</u>	TRAPPOLA ARIA cloche de pression Glocke fur druckschalter AIR TRAP for pressure switch CAMPANA PRESOSTATO	
19	456073 <u>Recommended spare parts</u>	O-RING O-RING O-RING O-RING O-RING	2x
20	142058	TROPPOPIENO TROP PLEIN UEBERLAUFROHR OVERFLOW PIPE REBOSE	
21	456081 <u>Recommended spare parts</u>	guarnizione o-ring joint torique o-ring O-Ring-Dichtung O-ring junta tórica o-ring	
22	121120	FILTRO VASCA FILTRE FILTER STAINER FILTRO	
23	429072 <u>Recommended spare parts</u>	GHIERA DOUILLE GEWINDERING RING NUT CONTERA VIROLA	
24	456076	O-RING O-RING O-RING O-RING O-RING	
25	136028 <u>Recommended spare parts</u>	CORPO ASPIRAZIONE E SCARICO CORPS D'ASPIRATION/VIDANGE ABSAUG-UND ABFLUSSKOERPER ASPIRATION AND DRAIN BODY CUERPO ASPIRACION/DESCARGA	
26	127082	MANICOTTO MANDATA LAVAGGIO tuyau de refoulement à laver Druckschlauch Wasch DELIVERY WASH HOSE MANGUITO LAVADO	
27	CFS1	FASCETTA SERRAGGIO TUBI Collier de serrage Schlauchschelle HOSE CLAMP ABRAZADERA	
28	143252	TUBO SCARICO LA50 TUYAU DE VIDANGE ABFLUSSSCHLAUCH DRAIN HOSE TUBO DESCARGA	



Listino componenti per pagina 4

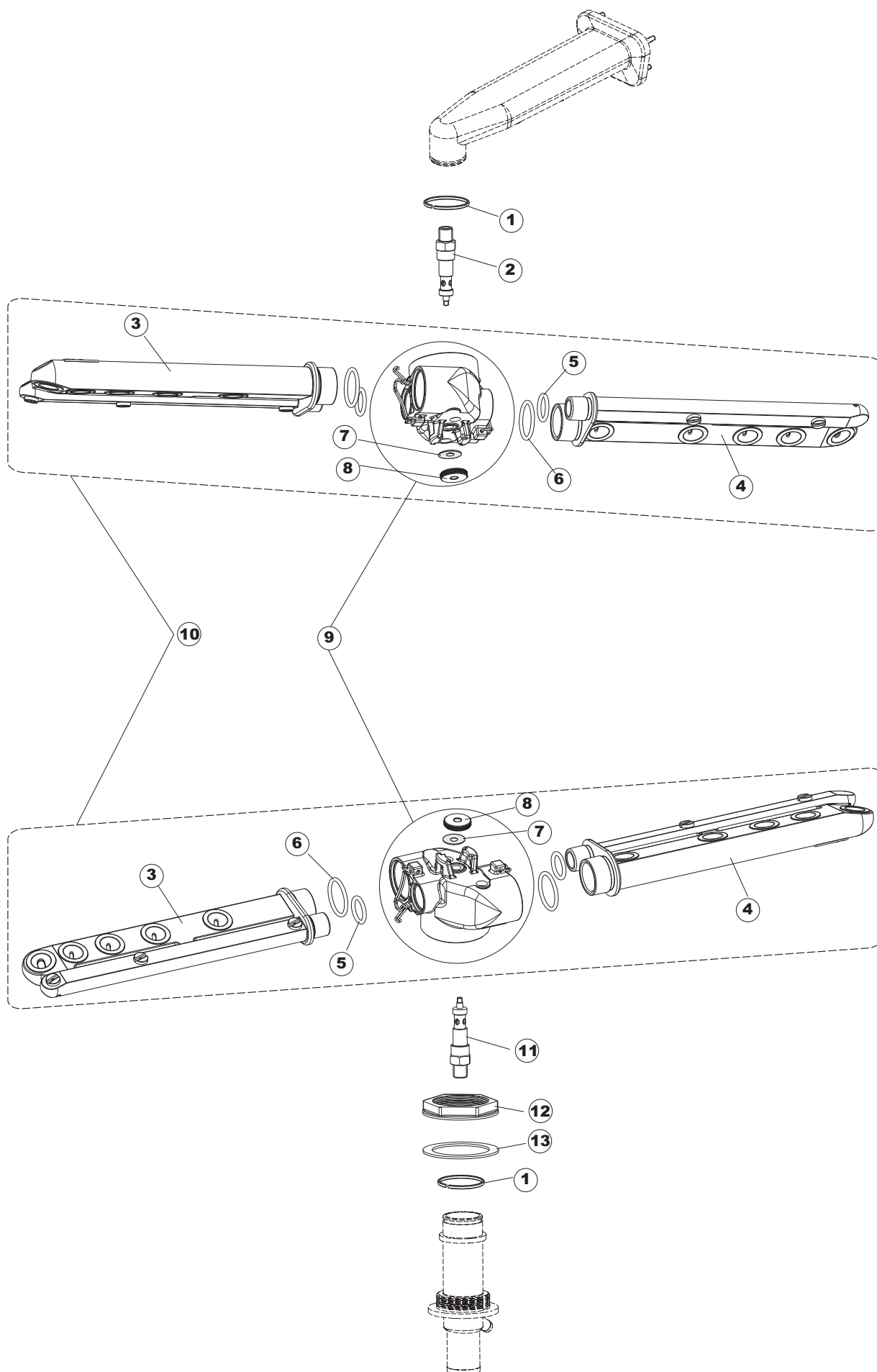
1	80177 <i><u>Recommended spare parts</u></i>	COLLETTORE LAVAGGIO COLLECTEUR SAMMELLEITUNG MAINFOLD COLECTOR	
2	80178 <i><u>Recommended spare parts</u></i>	GUARNIZIONE JOINT DICHTUNG GASKET JUNTA	
3	80174	RACCORDO LAVAGGIO RACCORD ANSCHLUSSTEIL PIPE FITTING RECOGIDA	
4	CFS1A	FASCETTA SERRAGGIO TUBI Collier de serrage Schlauchschele HOSE CLAMP ABRAZADERA	
5	69020	TUBO MANDATA LAVAGGIO TUYAU SCHLAUCH PIPE MANGUITO	
6	CFS1	FASCETTA SERRAGGIO TUBI Collier de serrage Schlauchschele HOSE CLAMP ABRAZADERA	
7	429073	GHIERA DOUILLE GEWINDERING RING NUT CONTERA VIROLA	
8	437102	GUARNIZIONE CONDOTTO INFER.LA50 JOINT DICHTUNG GASKET JUNTA	
9	115143	COLLETTORE LAVAGGIO COLLECTEUR SAMMELLEITUNG MAINFOLD COLECTOR	
10	127085	MANICOTTO MANDATA LAVAGGIO tuyau de refoulement à laver Druckschlauch Wasch DELIVERY WASH HOSE MANGUITO LAVADO	
11	423008	FASCETTA SERRAGGIO TUBI doppio filo con vite 25-29 Collier de serrage Schlauchschele HOSE CLAMP ABRAZADERA	
12	127082	MANICOTTO MANDATA LAVAGGIO tuyau de refoulement à laver Druckschlauch Wasch DELIVERY WASH HOSE MANGUITO LAVADO	
13	136028 <i><u>Recommended spare parts</u></i>	CORPO ASPIRAZIONE E SCARICO CORPS D'ASPIRATION/VIDANGE ABSAUG-UND ABFLUSSKOERPER ASPIRATION AND DRAIN BODY CUERPO ASPIRACION/DESCARGA	
15	441009 <i><u>Recommended spare parts</u></i>	GUARNIZIONE IN GOMMA RISCIAQUO JOINT DICHTUNG GASKET JUNTA	



Listino componenti per pagina 5

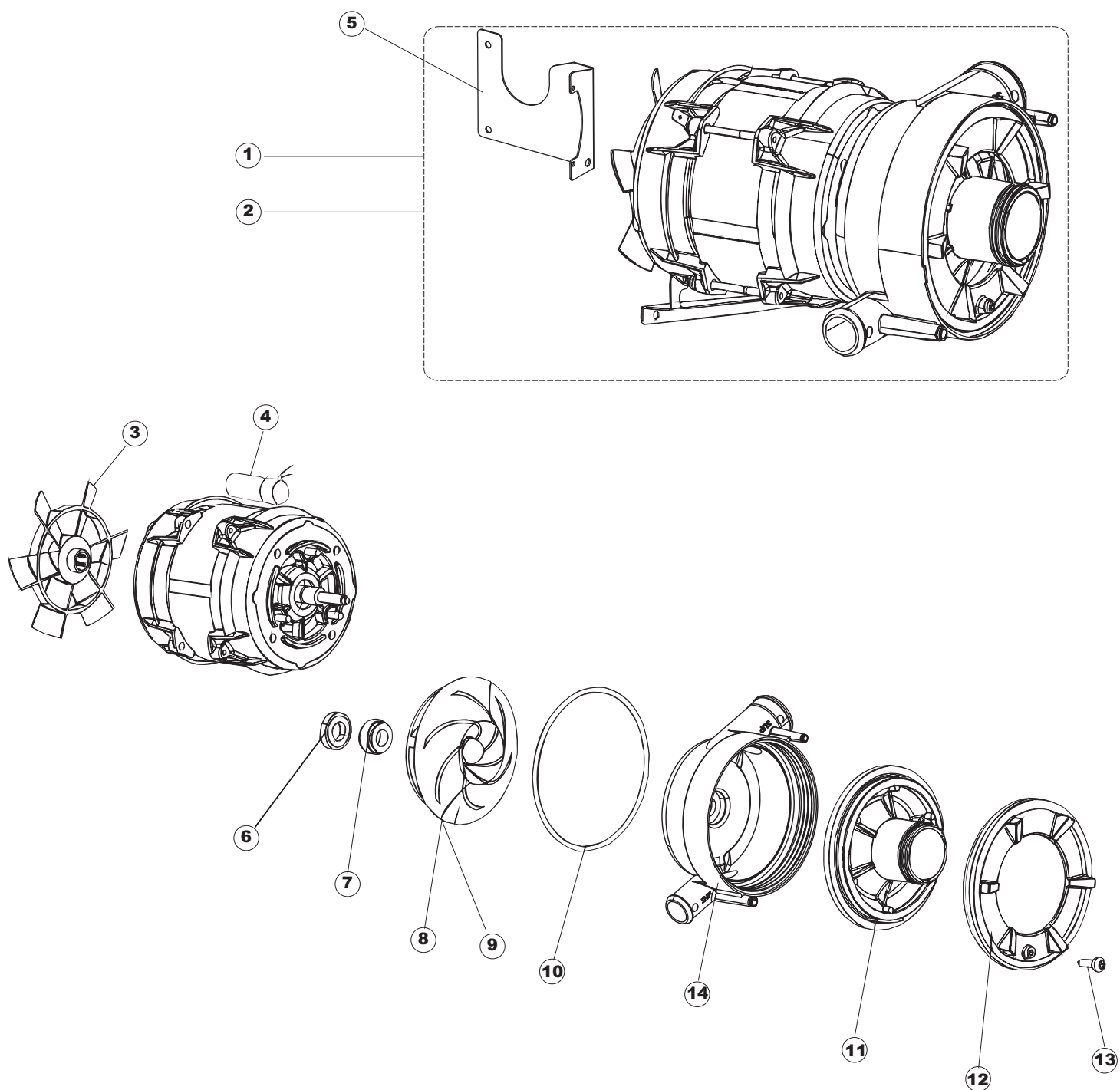
1	69020	TUBO MANDATA LAVAGGIO TUYAU SCHLAUCH PIPE MANGUITO	
2	80174	RACCORDO LAVAGGIO RACCORD ANSCHLUSSTEIL PIPE FITTING RECOGIDA	
3	927322	FASCETTA SERRAGGIO TUBI Collier de serrage Schlauchschele HOSE CLAMP ABRAZADERA	
4	143010	TUBO IN GOMMA 12X19,5 (FOOD QUALITY) TUYAU EN CAOUTCHOUC 12X19,5 GUMMISCHLAUCH 12X19,5 RUBBER PIPE 12X19,5 TUBO PRES. TP 12X19. 5	
5	143173 <u>Recommended spare parts</u>	RACCORDO Y RACCORD DE RINCAGE Y-STUECK RINSE MANIFOLD UNION ENJUAGUE PLAST. 35/40/50	
6	929169	TUBO DI CARICO TERMOPLASTICO TUYAU DE CHARGEMENT THERMOPLASTIQUE THERMOPLASTISCHER ZULAUFSCHLAUCH VDE THERMOPLASTIC INLET HOSE TUBO DE CARGA DEL TERMOPLASTICO	
7	115143	COLLETTORE LAVAGGIO COLLECTEUR SAMMELLEITUNG MAINFOLD COLECTOR	
8	104060	BOILER CHAUDIÈRE WARMWASSERBEREITER BOILER CALDERIN	
9	926189 <u>Recommended spare parts</u>	TERMOSTATO 95°C THERMOSTAT DE SURETE' A CONTACT KONTAKT-SICHERUNGSTHERMOSTAT (236039) CONTACT SAFETY-THERMOSTAT (REPLACES TERMOSTATO CALENTADOR SEG. 95ø	
10	456002	guarnizione o-ring joint torique o-ring O-Ring-Dichtung O-ring junta tórica o-ring	
12	230020C <u>Recommended spare parts</u>	KIT RESISTENZA KIT RESISTANCES REB230020 (8KW) KIT DER HEIZUNGEN REB230020 (8KW) KIT HEATING ELEMENTS REB230020 (8KW) KIT RESISTENCIA REB230020 (8KW)	
13	69870	PROTEZIONE RESISTENZA BOILER PROTECTION RESISTANCE BOILER HEIZUNGSSCHUETZ DES WARMWASSERBEREITERS BOILER HEATING ELEMENT PROTECTION PROTECCION RESISTENCIA CALENTADOR	
14	423010	FASCETTA STRINGITUBO IPO TORRO 8-12/7.5 W1 COLLIER DE SERRAGE SCHLAUCHSCHELLE HOSE CLAMP ABRAZADERA	
15	143005 <u>Recommended spare parts</u>	TUBO IN GOMMA TELATA 5X12 NERO TUYAU EN CAOUTCHOUC LIN 5X12 NOIR SCHLAUCH AUS LINENGUMMI 5X12 - SCHWARZ LINEN RUBBER PIPE 5X12 - BLACK TUBO PRES. TP 5x11 (CASER/15/NL C4N)	
16	H.775601 <u>Recommended spare parts</u>	TUBO 4x6 CRISTAL BLUE PVC TUYAU SCHLAUCH PIPE MANGUITO	

17	209037 <i><u>Recommended spare parts</u></i>	DOSATORE BRILLANTANTE distributeur de produit de rinçage Klarspüler DOSIERGERÄT RINSE AID-DISPENSER DOSIFICADOR ABRILLANTADOR	
18	121993	GRUPPO FILTRO+ZAVORRA DOSATORE filtre distributeur Filterspender filter aid dispenser filtro dispensador	
19	144010	DISPOSITIVO DI NON RITORNO Clapet Anti-Retour Rückschlagventil NON RETURN VALVE válvula de retención	
20	240016 <i><u>Recommended spare parts</u></i>	ELETTROVALVOLA ELECTROVANNE Magnetspule SOLENOID VALVE ELECTROVALVULA	
21	437041	GUARNIZIONE 3/4 JOINT DICHTUNG GASKET JUNTA	
30	80952	STAFFA DOSATORI console de support Stützwinkel support bracket SOPORTE DOSIFICADORES PG ACABADO	
31	143266 <i><u>Recommended spare parts</u></i>	TUBETTO SIL.5X10 MP2NERO+V.I(SEKO) TUYAU SCHLAUCH PIPE MANGUITO	



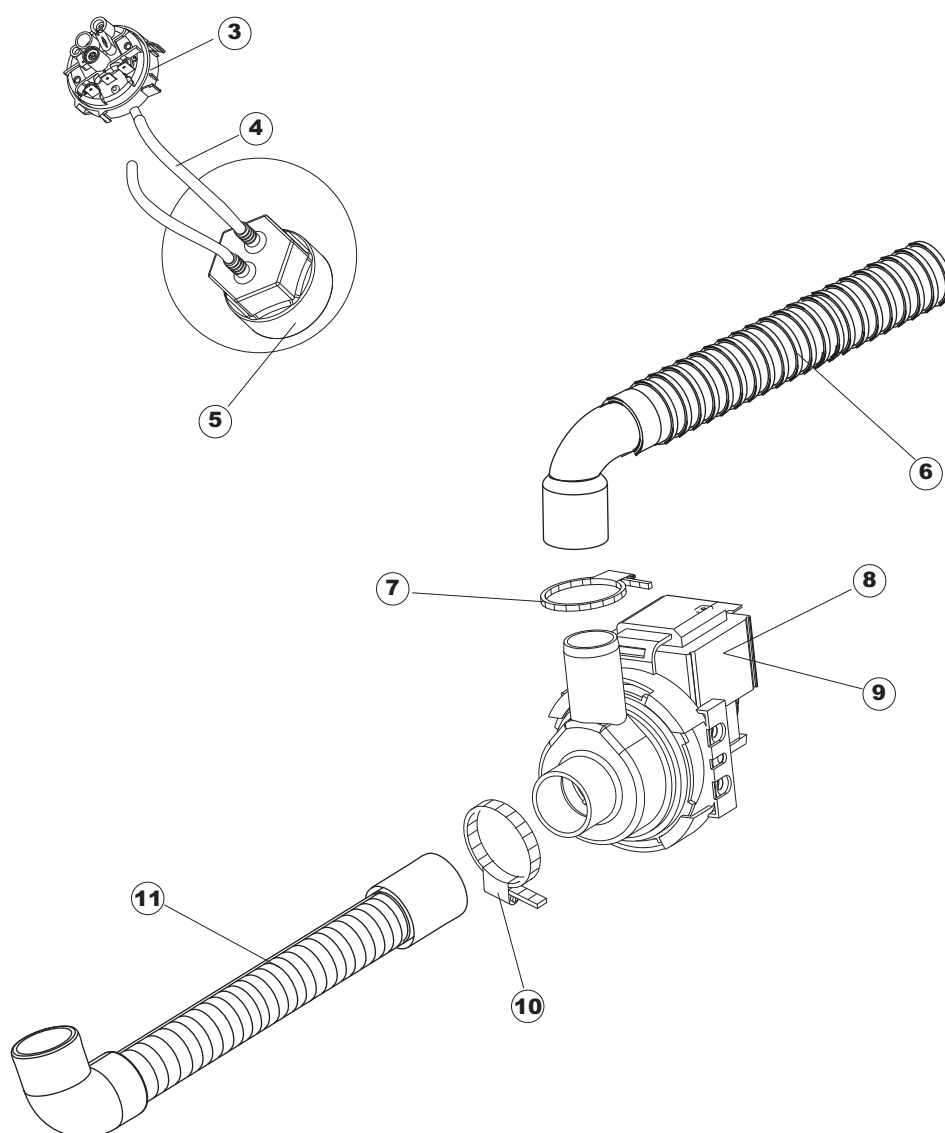
Listino componenti per pagina 6

1	303037	ANELLO DI TENUTA LAVAGGIO X5 BAGUE TEILERPLATTE RING ANILLO DE ESTANQ. LAVADO X5	
2	80640	PERNO PIVOT ZAPFEN PIVOT PERNO	
3	69316	BRACCIO LAVAGGIO RISCIAQUO BRAS DE LAVAGE ET RINCAGE SPULEN UND WASCH ARM RINSE AND WASH ARM BRAZO LAVADO Y ACLARADO	
4	69314	BRACCIO LAVAGGIO RISCIAQUO BRAS DE LAVAGE ET RINCAGE SPULEN UND WASCH ARM RINSE AND WASH ARM BRAZO LAVADO Y ACLARADO	
5	456070	O-RING O-RING O-RING O-RING O-RING	
6	456071	O-RING O-RING O-RING O-RING O-RING	
7	437100 <i><u>Recommended spare parts</u></i>	GUARNIZIONE D20D10S0.5 PTFE G400 JOINT DICHTUNG GASKET JUNTA	
8	454006	GHIERA DOUILLE GEWINDERING RING NUT CONTERA VIROLA	
9	129068	CORPO BRACCIO CORPS BRAS Armkörper Waschen oder Spülen ARM BODY CUERPO BRAZO	
10	69312	BRACCIO LAVAGGIO RISCIAQUO BRAS DE LAVAGE ET RINCAGE SPULEN UND WASCH ARM RINSE AND WASH ARM BRAZO LAVADO Y ACLARADO	
11	325087	PERNO BRACCIO LAVAGGIO RISCIAQUO PIVOT ZAPFEN PIVOT PERNO	
12	429073	GHIERA DOUILLE GEWINDERING RING NUT CONTERA VIROLA	
13	437102	GUARNIZIONE CONDOTTO INFER.LA50 JOINT DICHTUNG GASKET JUNTA	



Listino componenti per pagina 7

1	69122 <i><u>Recommended spare parts</u></i>	ELETTROPOMPA MOTOPOMPE MOTORPUMPE ELECTROPUMP ELECTROBOMBA	
2	69122HZ <i><u>Recommended spare parts</u></i>	ELETTROPOMPA MOTOPOMPE MOTORPUMPE ELECTROPUMP ELECTROBOMBA	
3	335015	VENTOLA POMPA 2400 VENTILATEUR POUR MOTOPOMPE LAUFRAD FUER MOTORPUMPE WASHPUMP FUN ROTOR PARA ELECTROBOMBA	
4	206002 <i><u>Recommended spare parts</u></i>	CONDENSATORE CONDENSEUR KONDENSATOR CAPACITOR CONDENSADOR	
5	69400	STAFFA POMPA LA50 console de support Stützwinkel support bracket ménsula de soporte	
6	141008	TENUTA MECC.FISSA POMPA(0146R) ETANCHEITE MECHANIQUE POUR MOTOPOMPE MECHANISCHE DICHTUNG WASHPUMP SHAFT SEAL SELLO MECANICO PARA ELECTROBOMBA	
7	141009	TENUTA MECC.ROTANTE POMPA(0142R) ETANCHEITE MECHANIQUE POUR MOTOPOMPE MECHANISCHE DICHTUNG WASHPUMP SHAFT SEAL SELLO MECANICO PARA ELECTROBOMBA	
8	124057	GIRANTE ELETTROPOMPA IMPULSEUR MOTOPOMPE FLUEGELRAD FUER MOTORPUMPE ELECTROPUMP IMPELLER ROTOR PARA ELECTROBOMBA	
9	124060	GIRANTE ELETTROPOMPA IMPULSEUR MOTOPOMPE FLUEGELRAD FUER MOTORPUMPE ELECTROPUMP IMPELLER ROTOR PARA ELECTROBOMBA	
10	456078	O-RING O-RING O-RING O-RING O-RING	
11	480148	TAPPO CHIOCCIOLA POMPA(2399R) BOUCHON DECKEL PLUG TAPON	
12	429074	GHIERA DOUILLE GEWINDERING RING NUT CONTERA VIROLA	
13	486242	VITE 3.5X13 TBC UNI6954(0062R) VIS SCHRAUBE SCREW TORNILLO	
14	116032	CHIOCCIOLA ELETTROPOMPA couvercle de la turbine PUMPENGEHAEUSE ELECTROPUMP HOUSING ESPIRAL PARA ELECTROBOMBA	



Pompa scarico
Drain pump

Listino componenti per pagina 8

1	70710	KIT POMPA SCARICO (50HZ) KIT POMPE DE VIDANGE KIT DER ABFLUSSPUMPE DRAIN PUMP KIT KIT BOMBA DESAGUE	
2	70710HZ	KIT POMPA SCARICO (60HZ) KIT POMPE DE VIDANGE KIT DER ABFLUSSPUMPE DRAIN PUMP KIT KIT BOMBA DESAGUE	
3	224023 <i><u>Recommended spare parts</u></i>	PRESSOSTATO 165/140 PRESSOSTAT DRUCKWAECHTER PRESSURE SWITCH PRESOSTATO	
4	143131	TUBO GOMMA 4X7MM TUYAU SCHLAUCH PIPE MANGUITO	
5	107014 <i><u>Recommended spare parts</u></i>	TRAPPOLA ARIA cloche de pression Glocke fur druckschalter AIR TRAP for pressure switch CAMPANA PRESOSTATO	
6	DZS151	TUBO SCARICO PL CM150 D25 (2 MANIC.) TUYAU DE VIDANGE ABFLUSSSCHLAUCH DRAIN HOSE TUBO DESCARGA	
7	CFS18	FASCETTA SERRAGGIO TUBI Collier de serrage Schlauchschele HOSE CLAMP ABRAZADERA	
8	80117 <i><u>Recommended spare parts</u></i>	POMPA DI SCARICO POMPE DE VIDANGE ABFLUSSPUMPE DRAIN PUMP BOMBA DESAGUE	
9	80117UL <i><u>Recommended spare parts</u></i>	POMPA DI SCARICO POMPE DE VIDANGE ABFLUSSPUMPE DRAIN PUMP BOMBA DESAGUE	
10	CFS1	FASCETTA SERRAGGIO TUBI Collier de serrage Schlauchschele HOSE CLAMP ABRAZADERA	
11	70097	TUBO DI SCARICO TUYAU DE VIDANGE ABFLUSSSCHLAUCH DRAIN HOSE TUBO DESCARGA	

RECOMMENDED SPARE PARTS

PAG 1	POS 14	COD 80105	TAMPONE FERMA CAPP SHOCK-ABSORBER FOR CAPOT PUFFER FÜR DURCHSCHUBSPÜLAUTOM. PARE-CHOCS CAPOT GUARDAGOLPES CAPOT	
PAG 2	POS 4	COD 80350	CONTATTORE CONTACTEUR KONTAKTGEBER CONTACTOR CONTACTOR	
PAG 2	POS 6	COD 228010	FUSIBILE 5X20 T4A RITARDATO 250V FUSIBLE Sicherung FUSE FISIBLE	
PAG 2	POS 9	COD 215037	SCHEDA INTERFACCIA MECCANICA CARTES D'INTERFACE MÉCANIQUE SCHNITTSTELLENKARTEN MECHANICAL INTERFACE BOARD TARJETA DE INTERFAZ MECÁNICA	
PAG 2	POS 17	COD 208010	INTERRUTTORE DOPPIO CORPS DE CONTACT DOPPELSCHALTER DOUBLE SWITCH DESVIADOR DOBLE	
PAG 2	POS 19	COD 226128	CORPO PULSANTE BOUTON CORPS Körper-Taste push button case CUERPO PULSADOR	
PAG 2	POS 21	COD 216029	SPIA ARANCIO LAMPE TEMOIN KONTROLLAMPE PILOT LAMP LAMPARA TESTIGO TB/06/SQ3 NARANJA	
PAG 2	POS 30	COD 80934	CAVO FLAT CABLE FLAT Flachbandkabel FLAT FLAT CABLE CABLE FLAT	
PAG 2	POS 31	COD 461028	PIEDINO PLAST.SCHEDA 5309AA00XS pié support de carte électronique Stützfess elektronische Karte foot board support sujección pie tarjeta electrónica	
PAG 2	POS 35	COD 215036	SCHEDA ELETTRONICA CARTE ELECTRONIQUE KARTE ELEKTRONIK MAIN BOARD TARJETA ELECTRÓNICA	Optional
PAG 3	POS 2	COD 230118	RESISTENZA VASCA 2100W-230V RÉSISTANCE DE CUVE TANKHEIZUNG TANK HEATING ELEMENT RESISTENCIA CUBA	
PAG 3	POS 4	COD 80871	MICRO MAGNETICO CONTACTE MAGNETIQUE TUERKONTAKTSCHALTER MAGNETIC DOOR SWITCH CONTACTO MAGNETICO	
PAG 3	POS 5	COD 236052	TERMOSTATO 90°+/-3°C THERMOSTAT THERMOSTAT THERMOSTAT TERM.CONTACTO CALENT./L.90°+/-3°(
PAG 3	POS 6	COD 926189	TERMOSTATO 95°C THERMOSTAT DE SURETE' A CONTACT KONTAKT-SICHERUNGSTHERMOSTAT (236039) CONTACT SAFETY-THERMOSTAT (REPLACES TERMOSTATO CALENTADOR SEG. 95ø	
PAG 3	POS 7	COD 236035	TERMOSTATO 60°C +/-3°C THERMOSTAT CUVE A CONTACT KONTAKT-TANKTHERMOSTAT CONTACT THERMOSTAT TANK TERM.CONTACTO CUBETA/L.60°+/-3°(2611573)	
PAG 3	POS 11	COD 143194	TUBO 4x6 CRISTAL TRASPARENTE TUYAU SCHLAUCH PIPE MANGUITO	Optional

RECOMMENDED SPARE PARTS

PAG 3	POS 12	COD 143219	TUBO "SANTOPRENE" CON RACCORDO TUYAU "SANTOPRENE" ROHR "SANTOPRENE" "SANTOPRENE" PIPE TUBITO SANTOPRENE	Optional
PAG 3	POS 13	COD 209021	DOSAT.PERIST.DETERG.REG.(NBR-3) DOSIFIC. PERIST.DETERGENTE REG.	Optional
PAG 3	POS 15	COD 224025	PRESSOSTATO 125/106 PRESSOSTAT DRUCKWAECHTER PRESSURE SWITCH PRESOSTATO	
PAG 3	POS 16	COD 224023	PRESSOSTATO 165/140 PRESSOSTAT DRUCKWAECHTER PRESSURE SWITCH PRESOSTATO	Drain pump
PAG 3	POS 18	COD 107013	TRAPPOLA ARIA cloche de pression Glocke fur druckschalter AIR TRAP for pressure switch CAMPANA PRESOSTATO	
PAG 3	POS 19	COD 456073	O-RING O-RING O-RING O-RING O-RING	2x
PAG 3	POS 21	COD 456081	guarnizione o-ring joint torique o-ring O-Ring-Dichtung O-ring junta tórica o-ring	
PAG 3	POS 23	COD 429072	GHIERA DOUILLE GEWINDERING RING NUT CONTERA VIROLA	
PAG 3	POS 25	COD 136028	CORPO ASPIRAZIONE E SCARICO CORPS D'ASPIRATION/VIDANGE ABSAUG-UND ABFLUSSKOERPER ASPIRATION AND DRAIN BODY CUERPO ASPIRACION/DESCARGA	
PAG 4	POS 1	COD 80177	COLLETTORE LAVAGGIO COLLECTEUR SAMMELLEITUNG MAINFOLD COLECTOR	
PAG 4	POS 2	COD 80178	GUARNIZIONE JOINT DICHTUNG GASKET JUNTA	
PAG 4	POS 13	COD 136028	CORPO ASPIRAZIONE E SCARICO CORPS D'ASPIRATION/VIDANGE ABSAUG-UND ABFLUSSKOERPER ASPIRATION AND DRAIN BODY CUERPO ASPIRACION/DESCARGA	
PAG 4	POS 15	COD 441009	GUARNIZIONE IN GOMMA RISCIAQUO JOINT DICHTUNG GASKET JUNTA	
PAG 5	POS 5	COD 143173	RACCORDO Y RACCORD DE RINCAGE Y-STUECK RINSE MANIFOLD UNION ENJUAGUE PLAST. 35/40/50	
PAG 5	POS 9	COD 926189	TERMOSTATO 95°C THERMOSTAT DE SURETE' A CONTACT KONTAKT-SICHERUNGSTHERMOSTAT (236039) CONTACT SAFETY-THERMOSTAT (REPLACES TERMOSTATO CALENTADOR SEG. 95ø	
PAG 5	POS 12	COD 230020C	KIT RESISTENZA KIT RESISTANCES REB230020 (8KW) KIT DER HEIZUNGEN REB230020 (8KW) KIT HEATING ELEMENTS REB230020 (8KW) KIT RESISTENCIA REB230020 (8KW)	

RECOMMENDED SPARE PARTS

PAG 5	POS 15	COD 143005	TUBO IN GOMMA TELATA 5X12 NERO TUYAU EN CAOUTCHOUC LIN 5X12 NOIR SCHLAUCH AUS LINENGUMMI 5X12 - SCHWARZ LINEN RUBBER PIPE 5X12 - BLACK TUBO PRES. TP 5x11 (CASER/15/NL C4N)	
PAG 5	POS 16	COD H.775601	TUBO 4x6 CRISTAL BLUE PVC TUYAU SCHLAUCH PIPE MANGUITO	
PAG 5	POS 17	COD 209037	DOSATORE BRILLANTANTE distributeur de produit de rinçage Klarspüler DOSIERGERÄT RINSE AID-DISPENSER DOSIFICADOR ABRILLANTADOR	
PAG 5	POS 20	COD 240016	ELETTROVALVOLA ELECTROVANNE Magnetspule SOLENOID VALVE ELECTROVALVULA	
PAG 5	POS 31	COD 143266	TUBETTO SIL.5X10 MP2NERO+V.I.(SEKO) TUYAU SCHLAUCH PIPE MANGUITO	
PAG 6	POS 7	COD 437100	GUARNIZIONE D20D10S0.5 PTFE G400 JOINT DICHTUNG GASKET JUNTA	
PAG 7	POS 1	COD 69122	ELETTROPOMPA MOTOPOMPE MOTORPUMPE ELECTROPUMP ELECTROBOMBA	
PAG 7	POS 2	COD 69122HZ	ELETTROPOMPA MOTOPOMPE MOTORPUMPE ELECTROPUMP ELECTROBOMBA	
PAG 7	POS 4	COD 206002	CONDENSATORE CONDENSEUR KONDENSATOR CAPACITOR CONDENSADOR	
PAG 8	POS 3	COD 224023	PRESSOSTATO 165/140 PRESSOSTAT DRUCKWAECHTER PRESSURE SWITCH PRESOSTATO	
PAG 8	POS 5	COD 107014	TRAPPOLA ARIA cloche de pression Glocke für druckschalter AIR TRAP for pressure switch CAMPANA PRESOSTATO	
PAG 8	POS 8	COD 80117	POMPA DI SCARICO POMPE DE VIDANGE ABFLUSSPUMPE DRAIN PUMP BOMBA DESAGUE	
PAG 8	POS 9	COD 80117UL	POMPA DI SCARICO POMPE DE VIDANGE ABFLUSSPUMPE DRAIN PUMP BOMBA DESAGUE	