

cod.DW220E

data:06/09/2023

**Catalogo ricambi
Spare parts catalog
Catalogue de pièces détachées
Ersatzteilkatalog
Catálogo de repuestos
Catálogo de peças de reposição
Каталог запасных частей**

RX 246 SX DR64 HR10 380-400/3N/50 EAC



S/N:DWP1005958

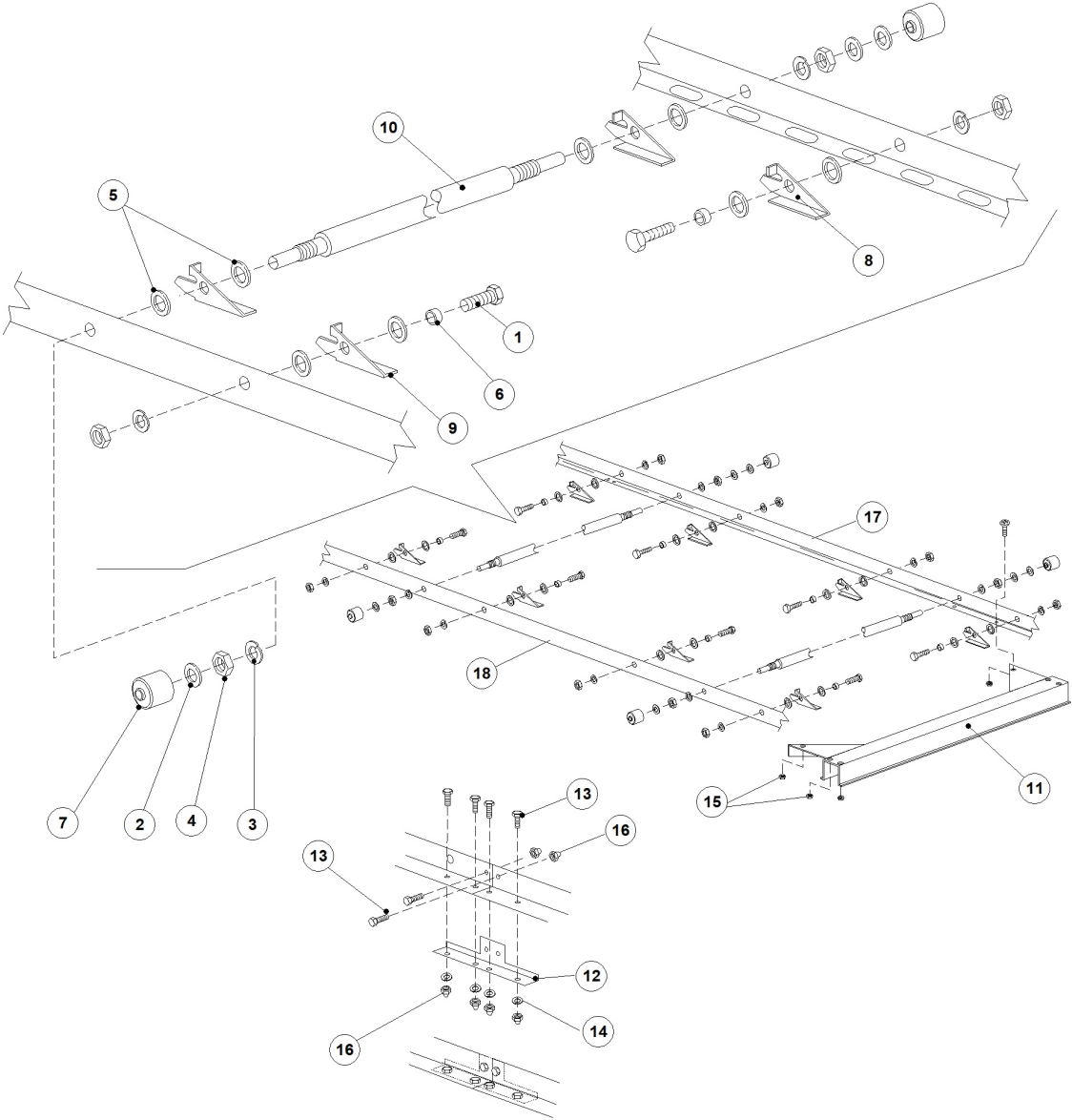


This exploded view diagram illustrates the assembly of a server rack. The central component is the main rack frame (1). Key parts include:

- Top Panel (7)**: The upper cover of the rack.
- Front Panel (6)**: The main front-facing door.
- Door Latch (8)** and **Door Cable (9)**: Components for securing the front door.
- Internal Components (11, 12, 13, 14, 15, 16, 17, 18, 19, 20, 21, 22, 23, 24, 25, 26)**: Various internal modules, including a power supply unit (11), cooling fans (13, 14), and other electronic components, shown in their relative positions within the rack.
- Mounting Hardware (2, 3, 4, 5, 10, 20)**: Screws, bolts, and brackets used to secure the panels and internal components.

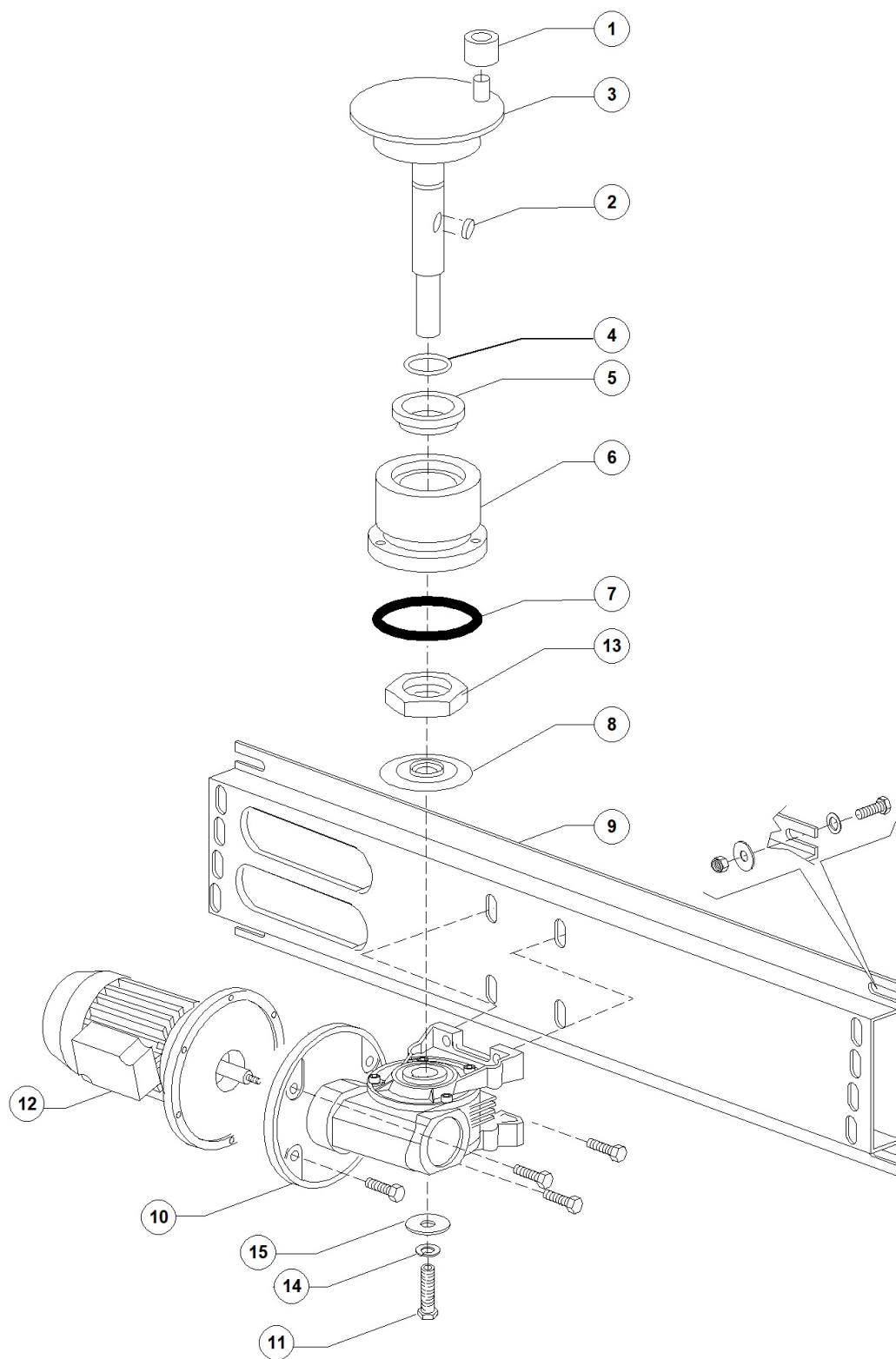
RX 246 SX DR64 HR10 380-400/3N/50 EAC - DWP1005958 - Wash-zone L=900 - DW220E

Pos.	Code	Descrizione	Description
1	DW3070017	AS. GUIDA CESTO 900 RX	
2	DW3070058	AS. GUIDA CESTO 900 RIB. RX	
3	DW3070178	PIEG. RINFORZO PER SEMITELAIO RX	
4	DW80116	"PIEDINO 2" REG. 112-215 A304"	"ADJUSTABLE FOOT 112-215 2""
5	DW3070193	SOTTOPORTA 900 RX	FRONT PANEL 900 RX
6	DW3070204	TAMPONAMENTO POST. 900 RX (3x 3071286)	REAR PANEL 900 (3X3071286)
7	DW3070002	ASSIEME TETTO 900 RX	
8	DW15123	INIETTORE DETER. A GOMITO INOX	S/S DOSING PUMP INJECTOR
9	DW14503	TUBO PVC DIAM.6x4 TRASPARENTE	D.6X4 PVC TRANSPARENT HOSE
10	DW13015	GUARNIZIONE 6225 OR 160 NBR	6225 O-RING 160 NBR
11	DW3019071	FILTRO ASPIRAZIONE POMPA	SUCTION FILTER
12	DW3071286	CARTER PER IPX4 /IPX5 ESTERNO	EXTERNAL PROTECTION IPX4/IPX5
13	DW30001011	RESIST.9000/9800W 230/240V 3	9000/9800W 230/240V 3 HEATING ELEM.
14	DW16045	STAFFE FISSAGGIO RESIST.FORO 6.3	HEATING ELEMENT MOUNTING BRACKET D.6,3
15	DW3070157	PANNELLO FRONT. PARASPRUZZI RX (N)	
18	DW3070008/A	AS. FILTRO LAVAGGIO POSTERIORE RX	
19	DW3070140/A	PIEG. FILTRO LAVAGGIO CON FORO RX	WASH FILTER WITH HOLE
20	DW75311	CUFFIOTTO PER RESISTENZA 26/03/97	HEATING ELEMENT COVER
21	DW3070006/A	AS. CASSETTO FILTRO LAVAGGIO RX	
22	DW14508	TUBO EPDM 4.5X9 PER PRESSOSTATO	EPDM HOSE 4.5X9 FOR PRESSURE SWITCH
23	DW80106	GABBIA D'ARIA INOX	AIR TRAP ASSEMBLY
24	DW88110	PRESSOSTATO 250-40	PRESSURE SWITCH 250-40
25	DW3009363	SUPPORTO PRESSOSTATO	PRESSURE-SWITCH SUPPORT
26	DW3071318	GRIGLIA L 900 PER RX	OVERFLOW PIPE FOR VX231-VX231S RX2016



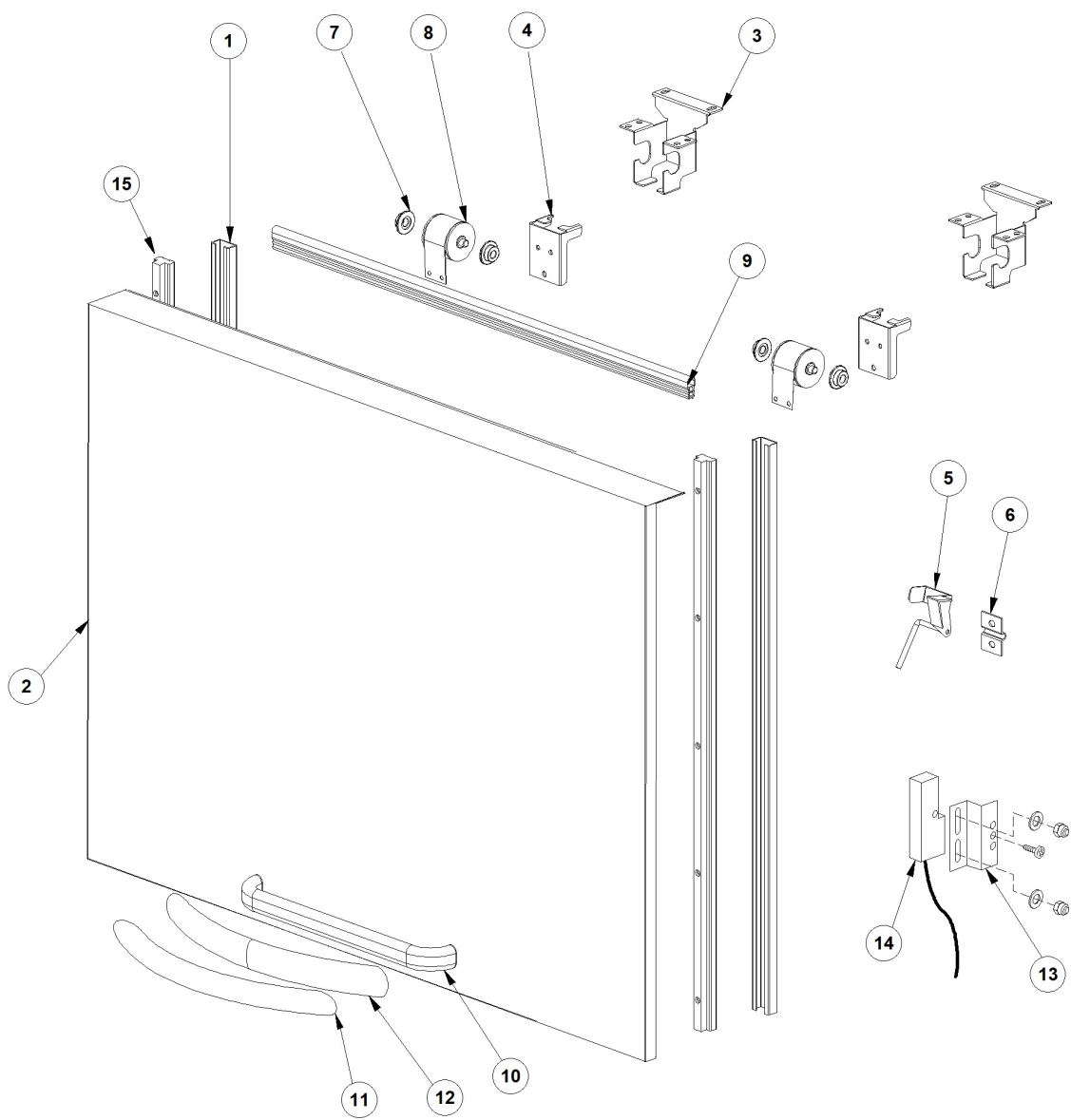
RX 246 SX DR64 HR10 380-400/3N/50 EAC - DWP1005958 - Conveyor parts - DW220E

Pos.	Code	Descrizione	Description
1	DW11109	VITE INOX M10x20 TE DIN933	M10X20 TE S/S SCREW DIN933
2	DW11185	RONDELLA 8X16 PIANA INOX DIN125	8X16 S/S PLANE WASHER DIN125
3	DW11192	RONDELLA GROWER M10 INOX DIN 127B	M10 S/S GROWER WASHER DIN127B
4	DW11719	DADO M10 INOX DIN 934	S/S NUT M10 DIN934
5	DW3003024	RONDELLA CARRELLO 19X12X1 PTFE	WASHER 19X12X1 PTFE
6	DW3003025	BOCCOLA DIST. CARRELLO 11,7X10X6 IN	SPACER FOR CARRIAGE 11,7X10X6
7	DW3003026	BOCCOLA RULLINO DIST. CARRELLO DELR	SPACER FOR CARRIAGE
8	DW3003100	SALTARELLO INOX DX	RIGHT S/S PAWL
9	DW3003101	SALTARELLO INOX SX	LEFT S/S PAWL
10	DW3003010	ASSE TRAVERSO PER CARRELLO	CARRIAGE SPACING AXLE
11	DW3009107	OMEGA GUIDA PER ECCENTRICO	GUIDE
12	DW3009168	PIEG. PIASTRINA DI COLL.TO	CONNECTION PLAQUE
13	DW11118	VITE INOX M6x12 TE DIN 933	M6X12 TE S/S SCREW DIN933
14	DW11604	RONDELLA GROWER M6 INOX UNI1751 DIN127	M6 S/S GROWER WASHER UNI1751 DIN127
15	DW11721	DADO M6 AUTOBL.INOX UNI 7473 DIN982	S/S SELF-LOCKING NUT M6 DIN982 (MIN. 10
16	DW11709	DADO M6 CIECO CALOTTA SEMISF.A2 DIN1587	S/S CAP NUT M6 DIN1587
17	DW3070114	PIEG. CARRELLO 910 RX	RIGHT/LEFT CARRIAGE L910mm
17	DW3070235	PIEG. CARRELLO 1290 RX DX	RIGHT CARRIAGE L1290mm
18	DW3070114	PIEG. CARRELLO 910 RX	RIGHT/LEFT CARRIAGE L910mm
18	DW3070236	PIEG. CARRELLO 1290 RX SX	LEFT CARRIAGE L1290mm



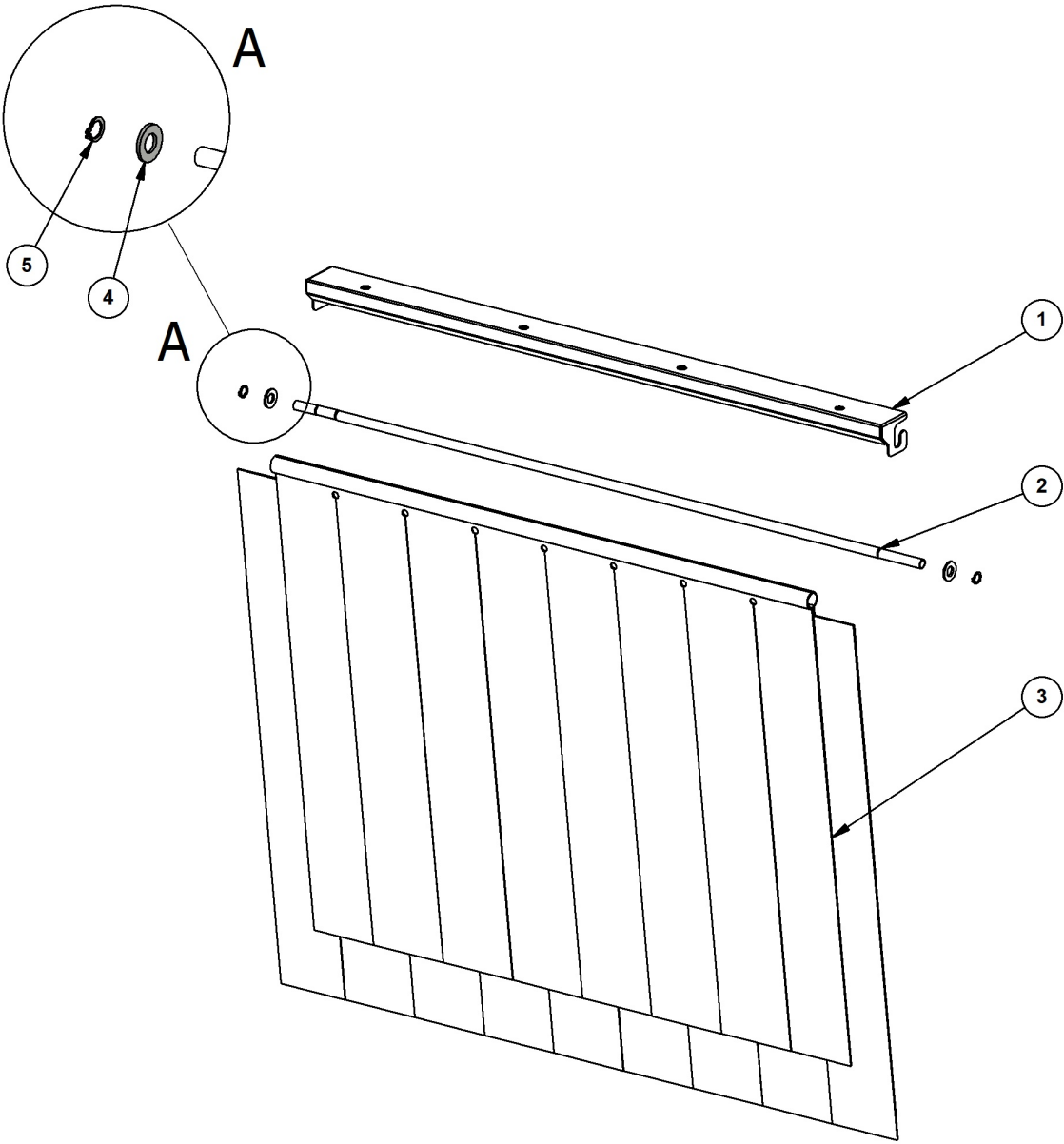
RX 246 SX DR64 HR10 380-400/3N/50 EAC - DWP1005958 - Motorgear components - DW220E

Pos.	Code	Descrizione	Description
1	DW3003012	RULLINO PER ECCENTRICO	ROLLER FOR ECCENTRIC
2	DW2001046	CHIAVETTA 8X7X30 INOX	S/S FLAT KEY 8X7X30
3	DW3003116	ASSIEME ALBERO LUNGO CON ECC. '99	ECCENTRIC SHAFT
4	DW13023	GUARNIZ. OR 131 (4093)	O-RING 131 (4093) GASKET
5	DW13024	PARAOLIO DEM40 TC30X42X7 MOLLA INOX	OIL SPLASH GUARD DEM 40 TC 30X42X7
6	DW3004131	BOCCOLA ALBERO RIDUT. AX	ECCENTRIC SHAFT BUSH
7	DW13015	GUARNIZIONE 6225 OR 160 NBR	6225 O-RING 160 NBR
8	DW3004161	DISCO ANTIGOCCIA PER ASSE MOTORIDUT	MOTOR GEAR SHAFT PROTECTION DISK
9	DW3070154	PIEG. OMEGA PER RIDUTTORE RX PRO-OPTIMA	MOTORGear SUPPORT
10	DW3000214	RIDUT. TRAINO LIMIT. 1:45 DESTRO	R 1:45 REDUCTION GEAR CONVEYOR MACHINES
11	DW11165	VITE INOX M8X40 TE DIN933	M8X40 TE S/S SCREW
12	DW3000128	MOTORE TRAINO 4P 230V3 50Hz INVERTER	CONVEYOR MOTOR 4P 230V3 50HZ INVERTER
13	DW3004183	DADO PER BOCCOLA COD.3004131-32	FERRULE FASTENING NUT
14	DW11609	RONDELLA GROWER M8 INOX DIN127	M8 S/S GROWER WASHER DIN127
15	DW11186	RONDELLA 8X24 PIANA INOX DIN9021	8X24 S/S PLANE WASHER DIN902



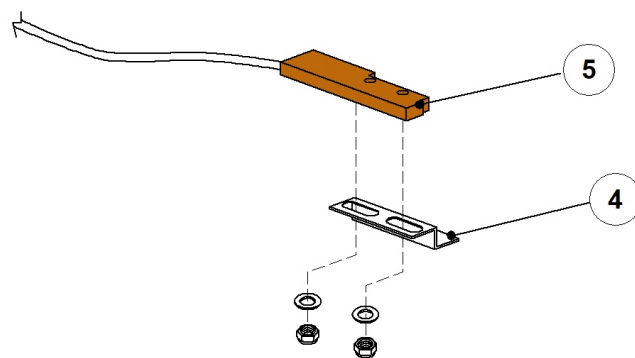
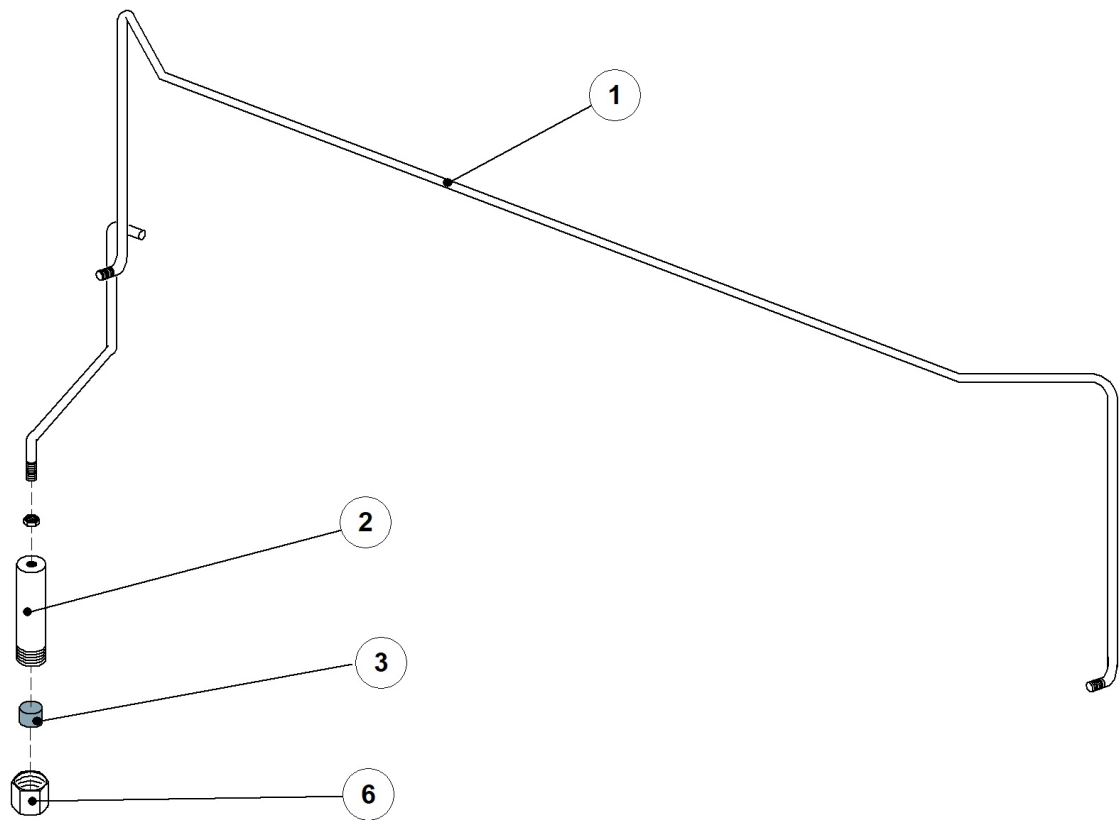
RX 246 SX DR64 HR10 380-400/3N/50 EAC - DWP1005958 - Door L=900 - DW220E

Pos.	Code	Descrizione	Description
1	DW3009033	PIEG. GUIDA PATTINO	DOOR SLIDING BLOCK
2	DW3070031	ASSIEME PORTA 900 RX	DOOR ASSEMBLY 900
3	DW3070197	PIEG. SUPPORTO MOLLA L38 RX (N)	SPRING SUPPORT L38
4	DW3070134	PIEG. FERMO PORTA RX	DOOR STOP
5	DW3000315	GANCIO SICUREZZA PORTA FX/CX	SAFETY DOOR HOOK
6	DW3000314	STAFFA SICUREZZA PORTA FX/CX	DOOR SAFETY BRACKET
7	DW3004012	SPALLA SUPPORTO MOLLA PORTA	SPRING HOLDER
8	DW3004013	MOLLA INOX PER PORTA MOD.BBSR22	DOOR SPRING BBSR22
9	DW3071114	GUARNIZIONE PORTA	DOOR SEAL
12	DW22260	MANIGLIA INOX IN ELLITTICO 40x20 INT.340	ELLIPTIC S/S HANDLE
13	DW3009112	PIEG. SUPPORTO MAGNETE PER PORTA	ECONOMIZER MICROSWITCH SUPPORT
14	DW3003112	REED MICRO PORTA E530	MAGNETIC REED SWITCH
15	DW3004026	PROFILO PATTINO GUIDA PORTA L760	



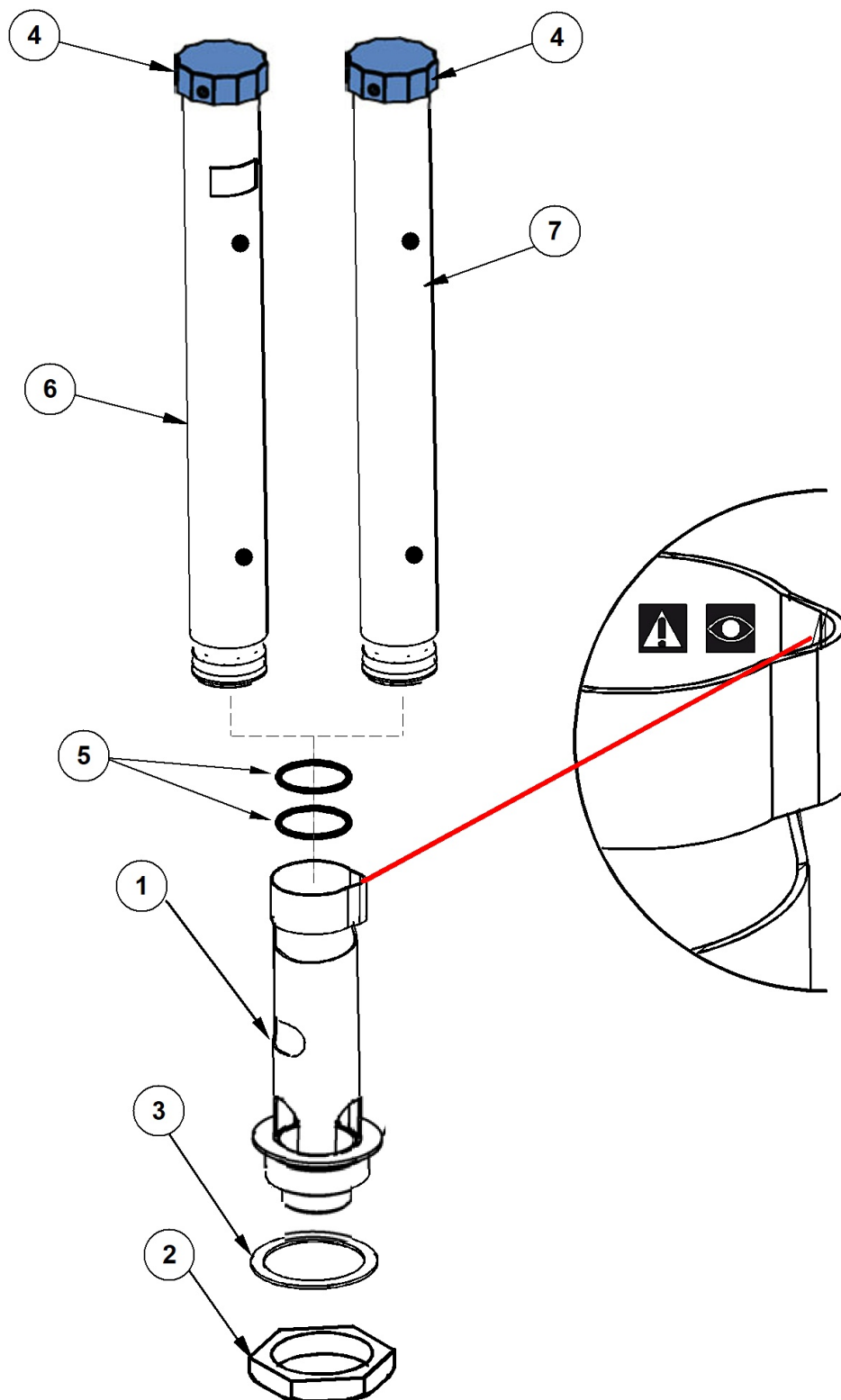
RX 246 SX DR64 HR10 380-400/3N/50 EAC - DWP1005958 - Inner Curtain - DW220E

Pos.	Code	Descrizione	Description
1	DW3070199	PIEG. SUPPORTO TENDINA RX	
2	DW3004052	ASTA SOSTEGNO PER TENDA INTERNA	INNER CURTAIN ROD
3	DW3071072	TENDINA INTERNA RX	INTERNAL CURTAIN
4	DW11185	RONDELLA 8X16 PIANA INOX DIN125	8X16 S/S PLANE WASHER DIN125
5	DW11815	SEEGER DIAM.8 INOX UNI7435	SNAP RING D.8 S/S



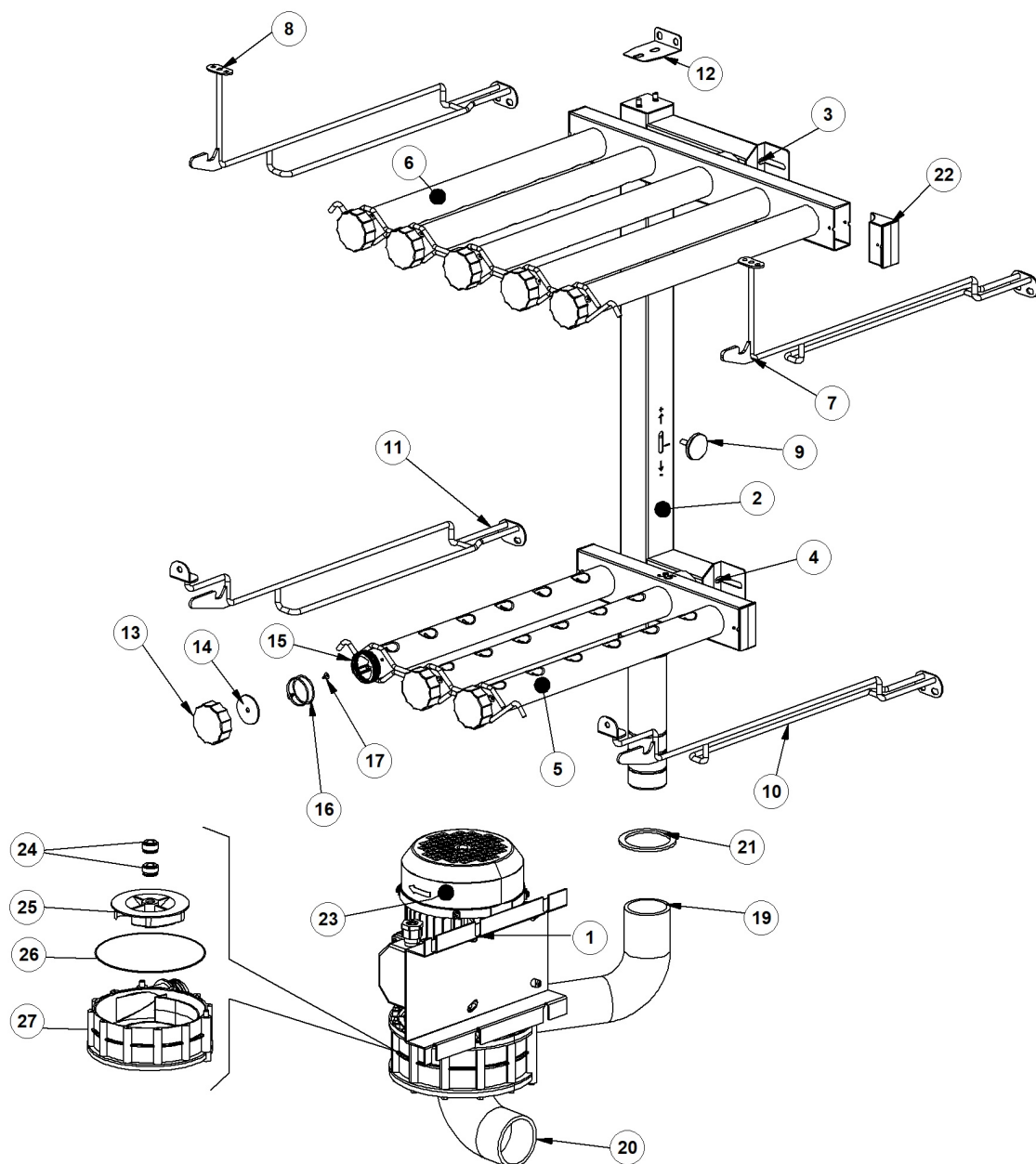
RX 246 SX DR64 HR10 380-400/3N/50 EAC - DWP1005958 - Wash economizer - DW220E

Pos.	Code	Descrizione	Description
1	DW3071011	ECONOMIZZATORE LAVAGGIO 900 SX RX	LEFT WASH ECONOMIZER 900
1	DW3071013	ECONOMIZZATORE LAV 600 DX-RISC PRO SX RX	ECONOMIZER 600 RIGHT WASH-LEFT RINSE
2	DW3003058	PORTA CALAMITA ECONOMIZZ. CESTI6/97	ECONOMIZER MAGNET HOLDER
3	DW3003113	MAGNETE PER ECONOM. DIAM.12X10 6/97	MAGNETIC UNIT
4	DW3009112	PIEG. SUPPORTO MAGNETE PER PORTA	ECONOMIZER MICROSWITCH SUPPORT
5	DW3003112	REED MICRO PORTA E530	MAGNETIC REED SWITCH
6	DW3004184	"TAPPO FEM. 3/8" PER COD. 3003058-3060065"	3/8 FEMALE PLUG



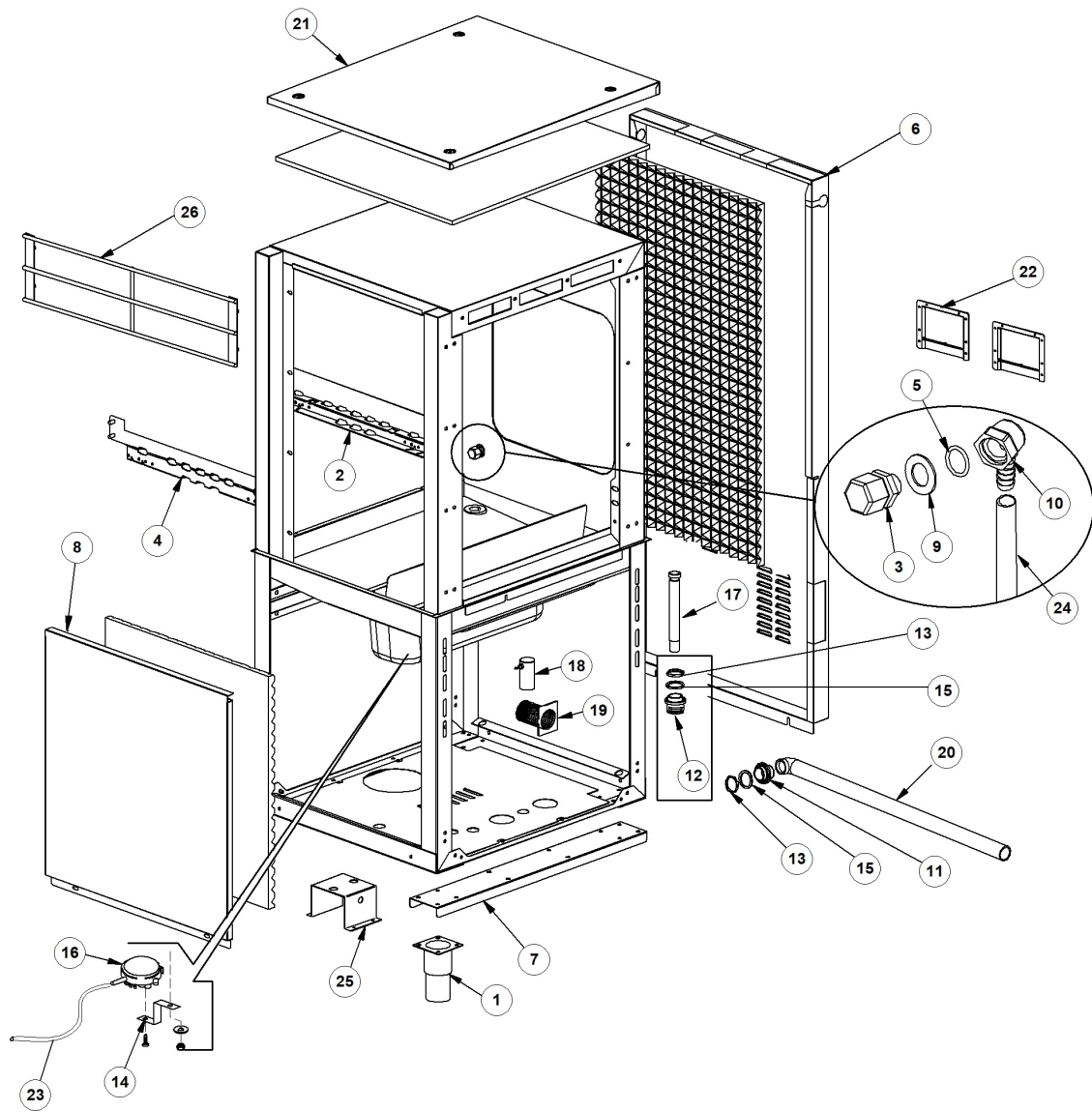
RX 246 SX DR64 HR10 380-400/3N/50 EAC - DWP1005958 - Over flow pipe - DW220E

Pos.	Code	Descrizione	Description
1	DW3071184	INNESTO TROPPO PIENO TRAINO RX 2016	JOINT FOR OVERFLOW PIPE
2	DW10600012	DADO BASSO PER FISS. RAMPA G.1200	FASTENING RISER FLAT NUT
3	DW10200173	GUARNIZIONE 75X58X2	75X58X2 GASKET
4	DW88105	TAPPO TROPPOPIENO GRIGIO	OVERFLOW PIPE PLUG
5	DW13019	GUARNIZIONE 4137 OR 140 NBR	O-RING 140 4137 (MIN. 10 PCS)
6	DW3071182	TROPPO PIENO PER UNA O DUE VASCHE RX2016	OVERFLOW PIPE 1 OR 2 WASH TANKS



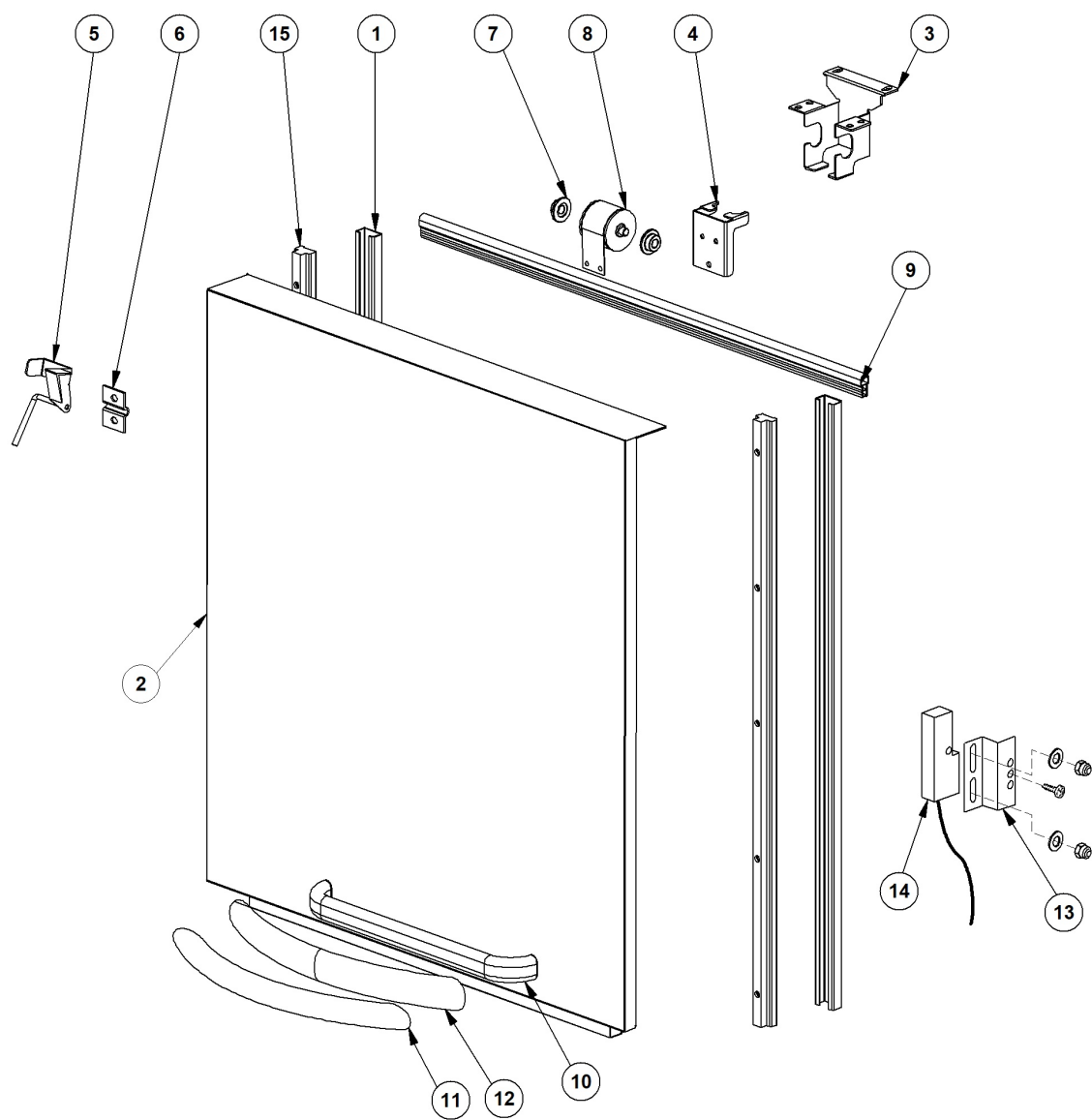
RX 246 SX DR64 HR10 380-400/3N/50 EAC - DWP1005958 - Pre-wash or wash pump group - DW220E

Pos.	Code	Descrizione	Description
1	DW3009148	PIEG. SUPPORTO POMPA MOD.1300	PUMP SUPPORT
2	DW3071050	RAMPA LAVAGGIO RX	WASH RISER
3	DW3071047	INNESTO LATERALE RASTREL DA 5 (5+3) RX	RACK LATERAL JOINT 5 (5+3)
4	DW3071043	INNESTO LATERALE RAST DA 3 (3+2e5+3) RX	RACK LATERAL JOINT 3 (3+2&5+3)
5	DW3071036	RASTRELLIERA DA 3 SX (5+3 SX) RX	3 LEFT SPRAY ARMS RACK (5+3 L)
6	DW3071037	RASTRELLIERA DA 5 (5+3) RX	5 SPRAY ARMS RACK (5+3)
7	DW3071024	GUIDA SUP DX PER RASTRELLIERE RX	RACK RIGHT UPPER GUIDE
8	DW3071025	GUIDA SUP SX PER RASTRELLIERE RX	RACK LEFT UPPER GUIDE
9	DW3004146	#GHIERA X REG.RAMPE A BAIONET	WATER FLOW ADJUSTER
10	DW3071022	GUIDA INF DX PER RASTRELLIERE RX	RACK RIGHT LOWER GUIDE
11	DW3071023	GUIDA INF SX PER RASTRELLIERE RX	RACK LEFT LOWER GUIDE
12	DW3070247	PIEG. STAFFA FISSAGGIO RAMPE RX	RISER FASTENING SUPPORT
13	DW80304	TAPPO PER UGELLO TERMINALE GRIGIO	GREY WASH ARM PLUG
14	DW80305	GUARNIZIONE PER TAPPO TUBO GIRANTE	ARM PLUG GASKET
15	DW3071026	GHIERA PER TAPPO RAMPA RX	RING NUT FOR RISER PLUG
16	DW3071117	GUARNIZIONE OR 02131	
17	DW11004	VITE TCB D.8 DENTATA 4X10 SPAX	4X10 TCB D.8 SPAX TOOTHED SCREW
19	DW3004025	MANICOTTO L MANDATA AX 50/50	PIPE COUPLING 50/50
20	DW3002020	EPDM D.60 MANICOTTO A GOMITO EPDM D.60	ELBOW PIPE COUPLING D.60
21	DW10200173/A	GUARNIZIONE 75X58X3	75X58X3 GASKET
22	DW3071027	TAPPO RETTANGOLARE PER RAMPA RX	RECTANGULAR PLUG FOR RAMP
23	DW88106	POMPA HP2.7 220/380-400 50HZ (1205)	PUMP HP2.7 220/380-400V/50HZ
24	DW15080	PREMISTOPA+CONTROFACCIA	ROTATING SEALS
25	DW88222/O	#GIRANTE POMPA HP2.7 (88106) OLYMPIA	PUMP ROTOR
26	DW10200290/O	#GUARN.OR POMPA MEC80.T200SX(OLYMPIA)	GUARN.OR POMPA MEC80.T200SX(OLYMPIA)
27	DW88220/O	#KIT CHIOCCIOLA POMPA 2.7HP(88106)OLYMPI	



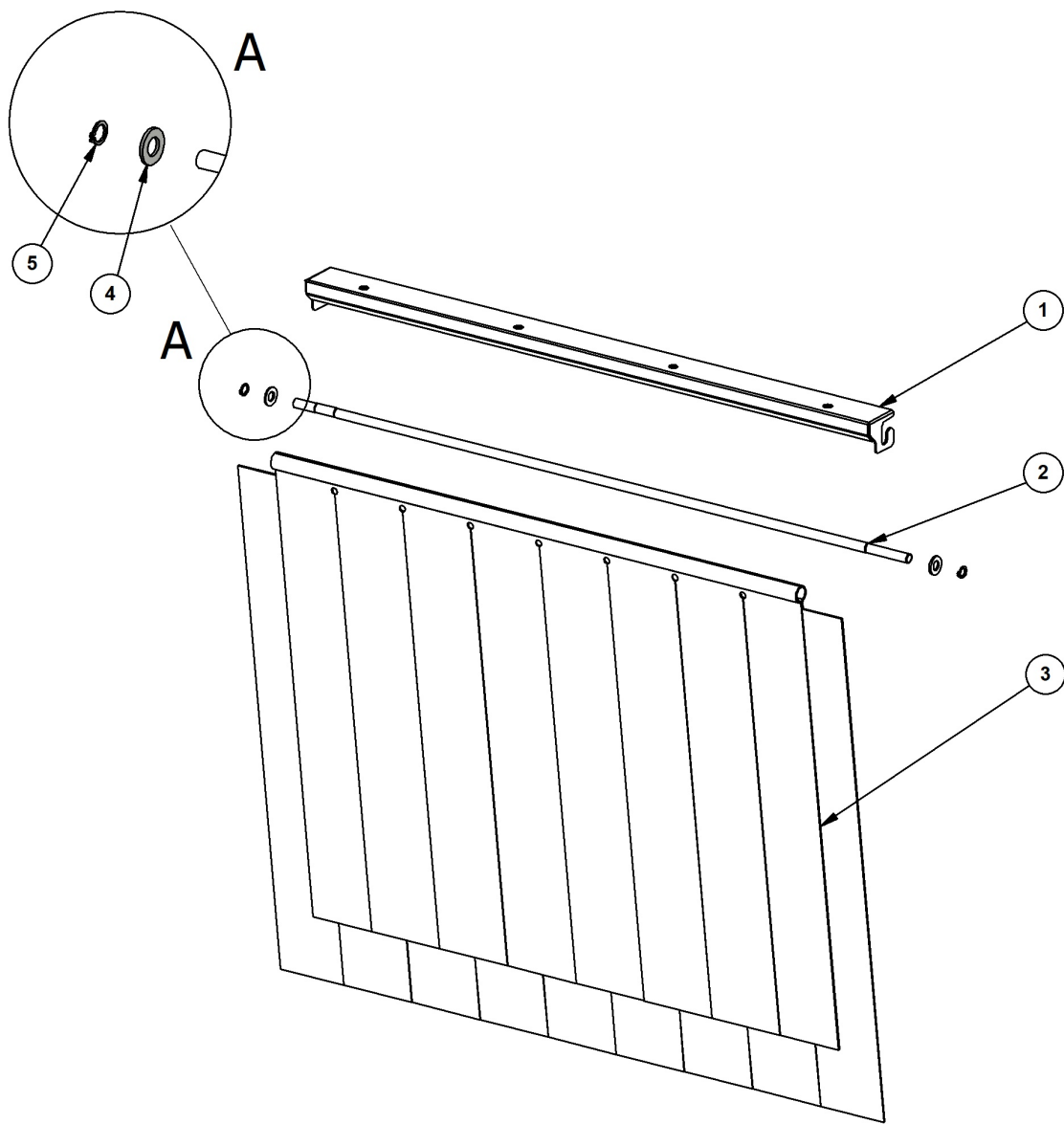
RX 246 SX DR64 HR10 380-400/3N/50 EAC - DWP1005958 - Rinsing-zone L=600 - DW220E

Pos.	Code	Descrizione	Description
1	DW80116	"PIEDINO 2" REG. 112-215 A304"	"ADJUSTABLE FOOT 112-215 2""
2	DW3070014	AS. GUIDA CESTO 600 RX	
3	DW3003128	GOMITO DI CARICO G3/8	LOADING ELBOW G3/8
4	DW3070057	AS. GUIDA CESTO 600 RIB. RX	
5	DW3003130	GUARNIZIONE OR 123 NBR	O-RING 123 NBR
6	DW3070202	TAMPONAMENTO POST. 600 RX (2x 3071286)	
7	DW3070178	PIEG. RINFORZO PER SEMITELAIO RX	
8	DW3070192	SOTTOPORTA 600 RX	FRONT PANEL 600 RX
9	DW3009387	RONDELLA GOMITO CARICO	LOADING ELBOW WASHER
10	DW3003129	GOMITO PORTAGOMMA 12 - G3/8	ELBOW HOSE-CONNECTION 12 G3/8
11	DW10701/B	PILETTA SCARICO DIRITTA	STRAIGHT FLOOR DRAIN
12	DW15063	PILETTA SCARICO INOX	STEEL FLOOR DRAIN
13	DW11701/A	DADO INOX PER PIL. SCAR.	S/S NUT
14	DW3009363	SUPPORTO PRESSOSTATO	PRESSURE-SWITCH SUPPORT
15	DW13305	GUARN.GOM.SCARICO 44x32x3 DIS.LS061	O RING FOR DRAIN ELBOW 44x32x3 DIS.LS061
16	DW10706/A	"PRESSOSTATO "EL." 46-26"	PRESSURE SWITCH 46-26
17	DW3004089	TROPPO PIENO CIECO MODULO RISCIAQUO	BLIND OVERFLOW PIPE RINSE ZONE
18	DW80106	GABBIA D'ARIA INOX	AIR TRAP ASSEMBLY
19	DW3071166	FILTRO POMPA PRERIS RX PRO	
20	DW30002021	TUBO EPDM MANDATA LAV. SUPERIORE	TOP EPDM DELIVERY WASH PIPE
21	DW3070001	ASSIEME TETTO 600 RX	
22	DW3071286	CARTER PER IPX4 /IPX5 ESTERNO	EXTERNAL PROTECTION IPX4/IPX5
23	DW14508	TUBO EPDM 4.5X9 PER PRESSOSTATO	EPDM HOSE 4.5X9 FOR PRESSURE SWITCH
24	DW2907350	TUBO GOMMA EPDM 12X20	12X20 EPDM RUBBER PIPE
25	DW3070346	PIEG OMEGA PER VALVOLE RX PRO-OPTIMA	
26	DW3071317	GRIGLIA L 600 PER RX	OVERFLOW PIPE FOR VX231-VX231S RX2016



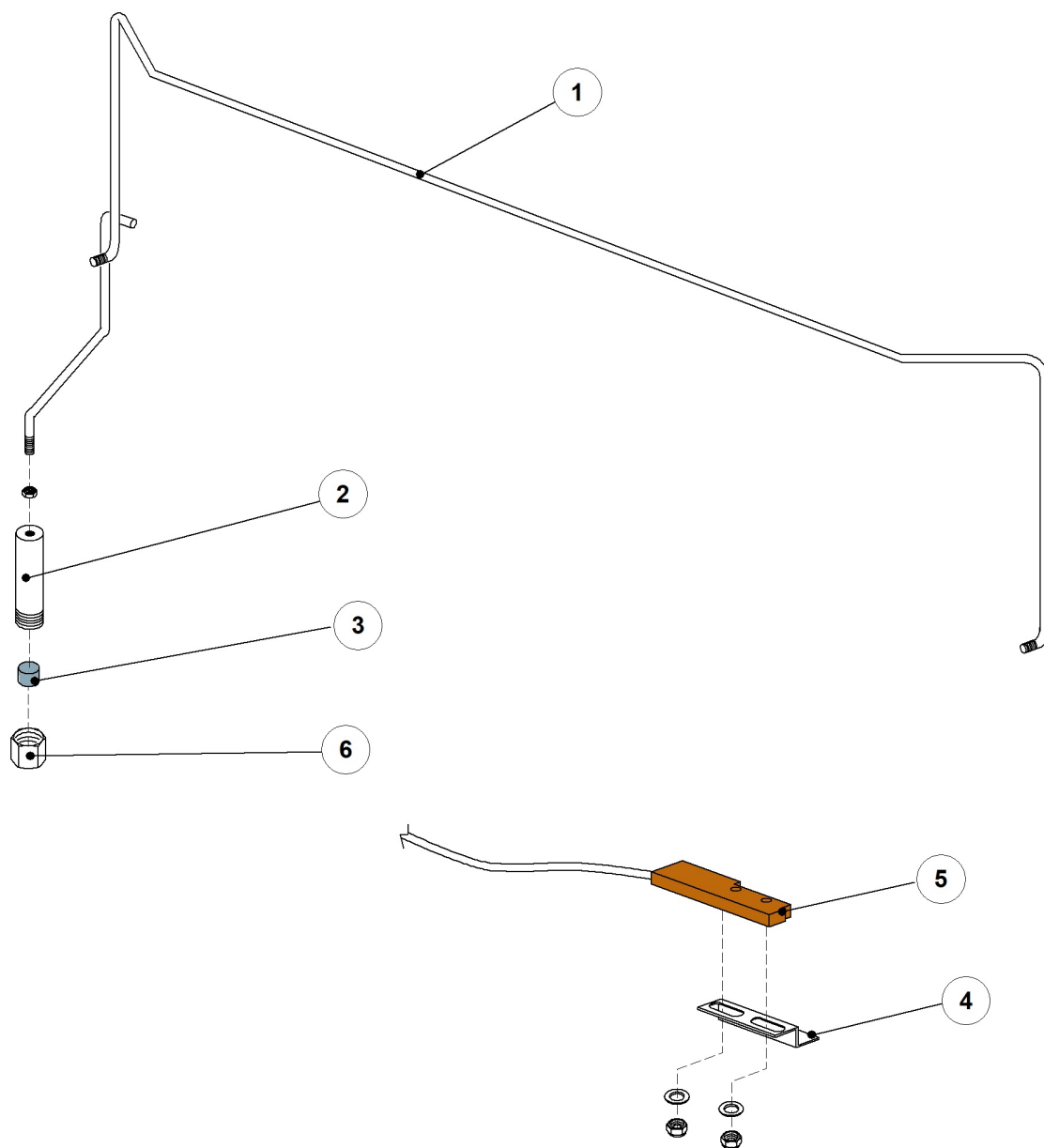
RX 246 SX DR64 HR10 380-400/3N/50 EAC - DWP1005958 - Door L=600 - DW220E

Pos.	Code	Descrizione	Description
1	DW3009033	PIEG. GUIDA PATTINO	DOOR SLIDING BLOCK
2	DW3070030	ASSIEME PORTA 600 RX	DOOR ASSEMBLY 600
3	DW3070198	PIEG. SUPPORTO MOLLA L50 RX QX (N)	SPRING SUPPORT L50
4	DW3070134	PIEG. FERMO PORTA RX	DOOR STOP
5	DW3000315	GANCIO SICUREZZA PORTA FX/CX	SAFETY DOOR HOOK
6	DW3000314	STAFFA SICUREZZA PORTA FX/CX	DOOR SAFETY BRACKET
7	DW3004012	SPALLA SUPPORTO MOLLA PORTA	SPRING HOLDER
8	DW3071120	MOLLA PER PORTA MOD 600/1300 RX	DOOR SPRING
9	DW3071114	GUARNIZIONE PORTA	DOOR SEAL
12	DW22260	MANIGLIA INOX IN ELLITTICO 40x20 INT.340	ELLIPTIC S/S HANDLE
13	DW3009112	PIEG. SUPPORTO MAGNETE PER PORTA	ECONOMIZER MICROSWITCH SUPPORT
14	DW3003112	REED MICRO PORTA E530	MAGNETIC REED SWITCH
15	DW3004026	PROFILO PATTINO GUIDA PORTA L760	



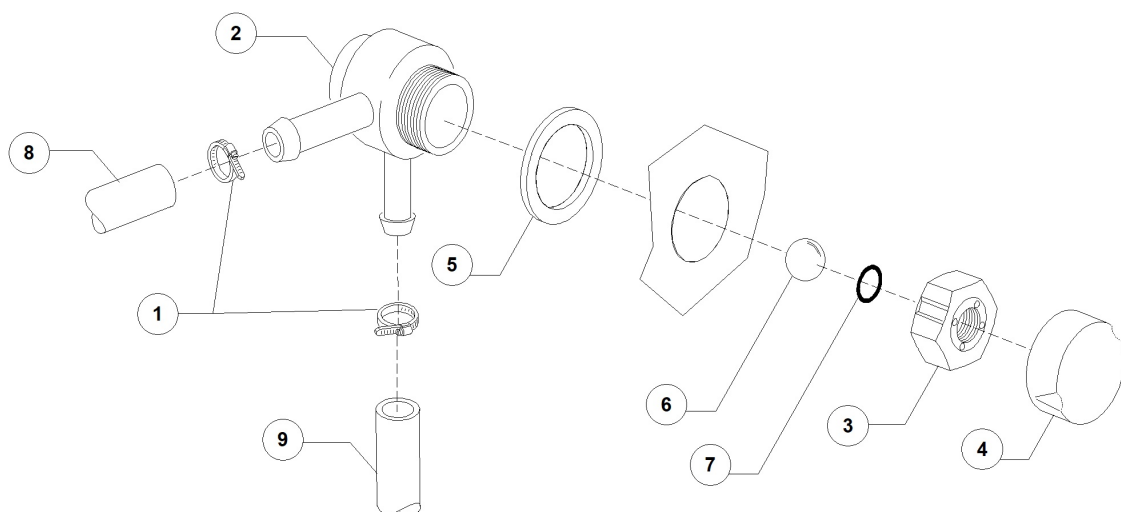
RX 246 SX DR64 HR10 380-400/3N/50 EAC - DWP1005958 - Inner curtain - DW220E

Pos.	Code	Descrizione	Description
1	DW3070199	PIEG. SUPPORTO TENDINA RX	
2	DW3004052	ASTA SOSTEGNO PER TENDA INTERNA	INNER CURTAIN ROD
3	DW3071072	TENDINA INTERNA RX	INTERNAL CURTAIN
4	DW11185	RONDELLA 8X16 PIANA INOX DIN125	8X16 S/S PLANE WASHER DIN125
5	DW11815	SEEGER DIAM.8 INOX UNI7435	SNAP RING D.8 S/S



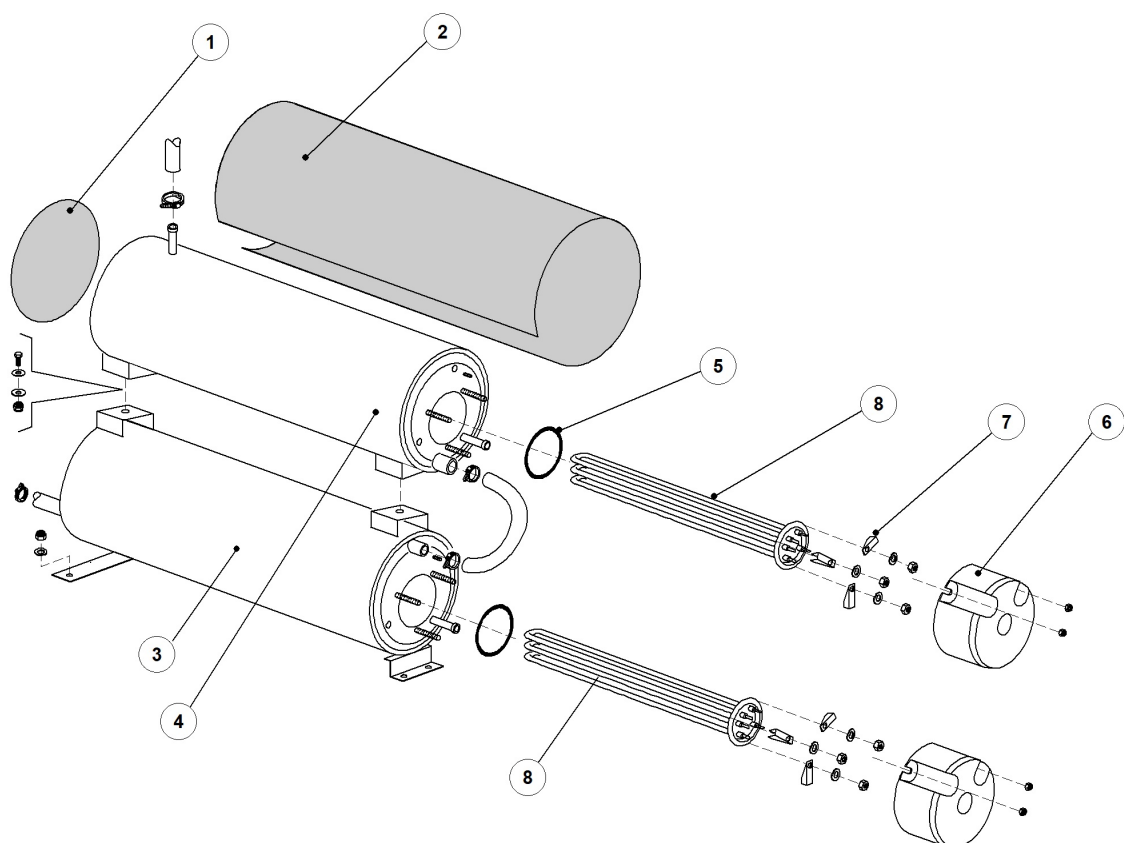
RX 246 SX DR64 HR10 380-400/3N/50 EAC - DWP1005958 - Rinsing economizer - DW220E

Pos.	Code	Descrizione	Description
1	DW3071013	ECONOMIZZATORE LAV 600 DX-RISC PRO SX RX	ECONOMIZER 600 RIGHT WASH-LEFT RINSE
2	DW3003058	PORTA CALAMITA ECONOMIZZ. CESTI6/97	ECONOMIZER MAGNET HOLDER
3	DW3003113	MAGNETE PER ECONOM. DIAM.12X10 6/97	MAGNETIC UNIT
4	DW3009112	PIEG. SUPPORTO MAGNETE PER PORTA	ECONOMIZER MICROSWITCH SUPPORT
5	DW3003112	REED MICRO PORTA E530	MAGNETIC REED SWITCH
6	DW3004184	"TAPPO FEM. 3/8" PER COD. 3003058-3060065"	3/8 FEMALE PLUG



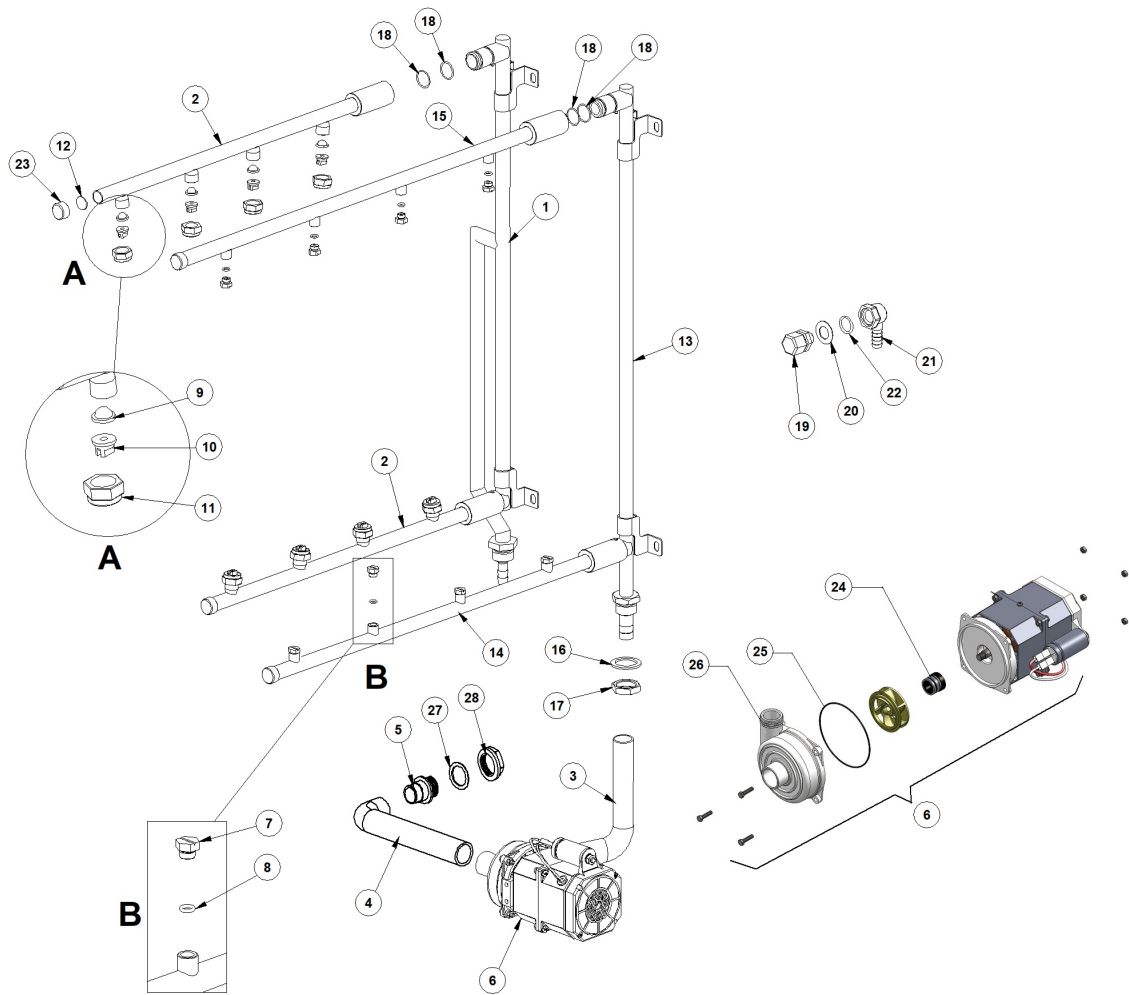
RX 246 SX DR64 HR10 380-400/3N/50 EAC - DWP1005958 - DVGW valve - DW220E

Pos.	Code	Descrizione	Description
1	DW11807	FASCETTE AISI 430 12/22	CLAMP 12/22 AISI 430
2	DW15280	CORPO CENTRALE VALVOLA DVGW 07	DRAIN VALVE CENTER BODY
3	DW15281	DADO VALVOLA DVGW 07	VALVE NUT
4	DW15282	COPRI DADO VALVOLA DVGW 07	VALVE NUT COVER
5	DW15283	GUARNIZIONE VALVOLA DVGW 07	VALVE GASKET
6	DW15284	"SFERA 5/8" VALVOLA DVGW 07"	"5/8" BALL FOR DVGW VALVE 07"
7	DW15285	GUARNIZIONE OR 115 KTW VALVOLA DVGW 07	O-RING 115 KTW



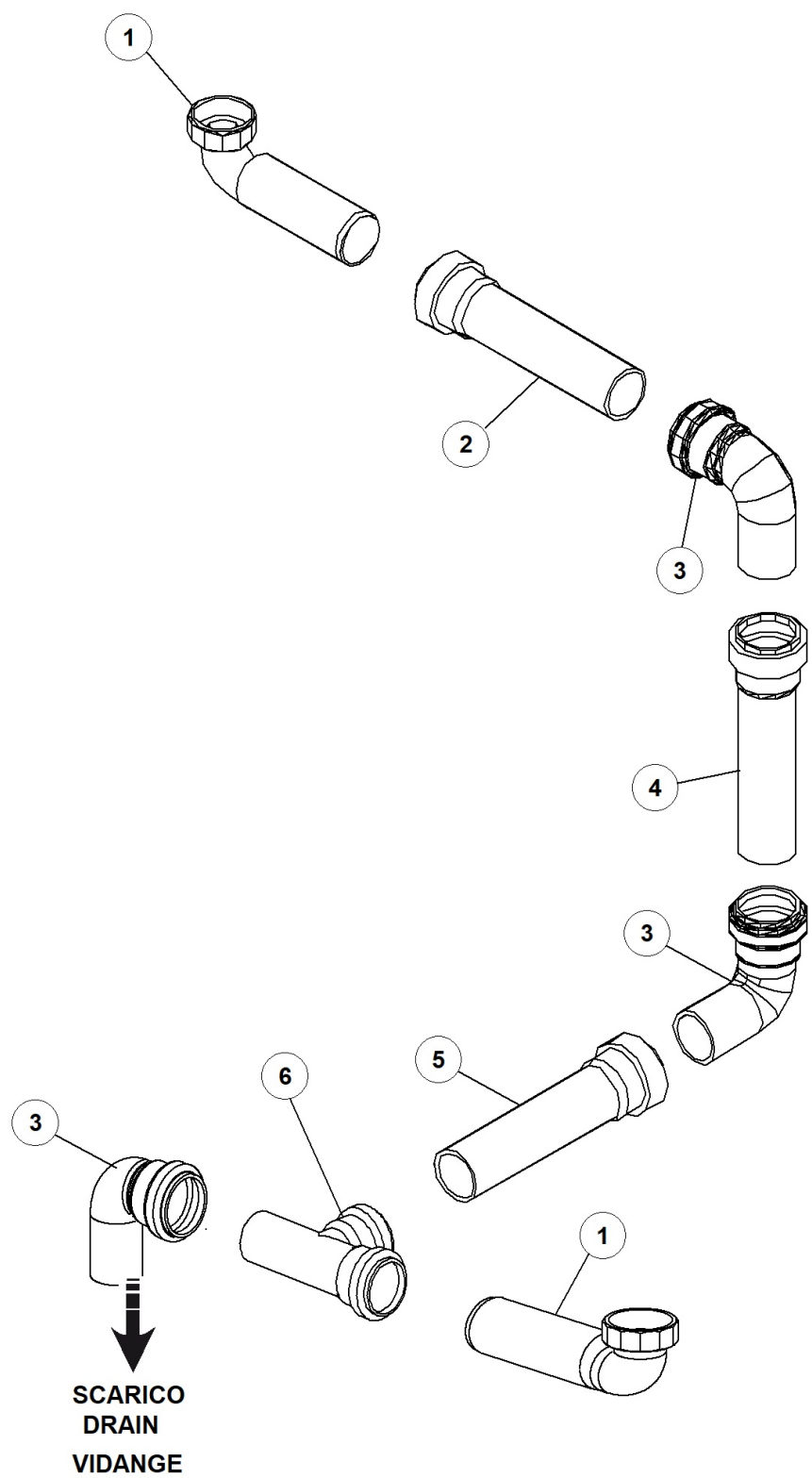
RX 246 SX DR64 HR10 380-400/3N/50 EAC - DWP1005958 - Boiler group - DW220E

Pos.	Code	Descrizione	Description
1	DW75205	DISCO IN ESPANSOLENE. AUTOESTING. D.160	INSULATING DISK D.160
2	DW3071291	COIBENTAZIONE BOILER D.155X500 TRA-NASTR	BOILER INSULATING D.155X500
3	DW3007012	BOILER D160x530 INF DOPPIO (AISI 316)	LOWER BOILER D160x530 (AISI 316)
4	DW3007013	BOILER D160x530 SUP DOPPIO (AISI 316)	UPPER BOILER D160x530 (AISI 316)
5	DW13015	GUARNIZIONE 6225 OR 160 NBR	6225 O-RING 160 NBR
6	DW75311	CUFFIOTTO PER RESISTENZA 26/03/97	HEATING ELEMENT COVER
7	DW16045	STAFFE FISSAGGIO RESIST.FORO 6.3	HEATING ELEMENT MOUNTING BRACKET D.6,3
8	DW30001010	RESIST.6000/6530W 230/240V 3	6000/6530W 230/240V 3 HEATING ELEM.
8	DW30001011	RESIST.9000/9800W 230/240V 3	9000/9800W 230/240V 3 HEATING ELEM.



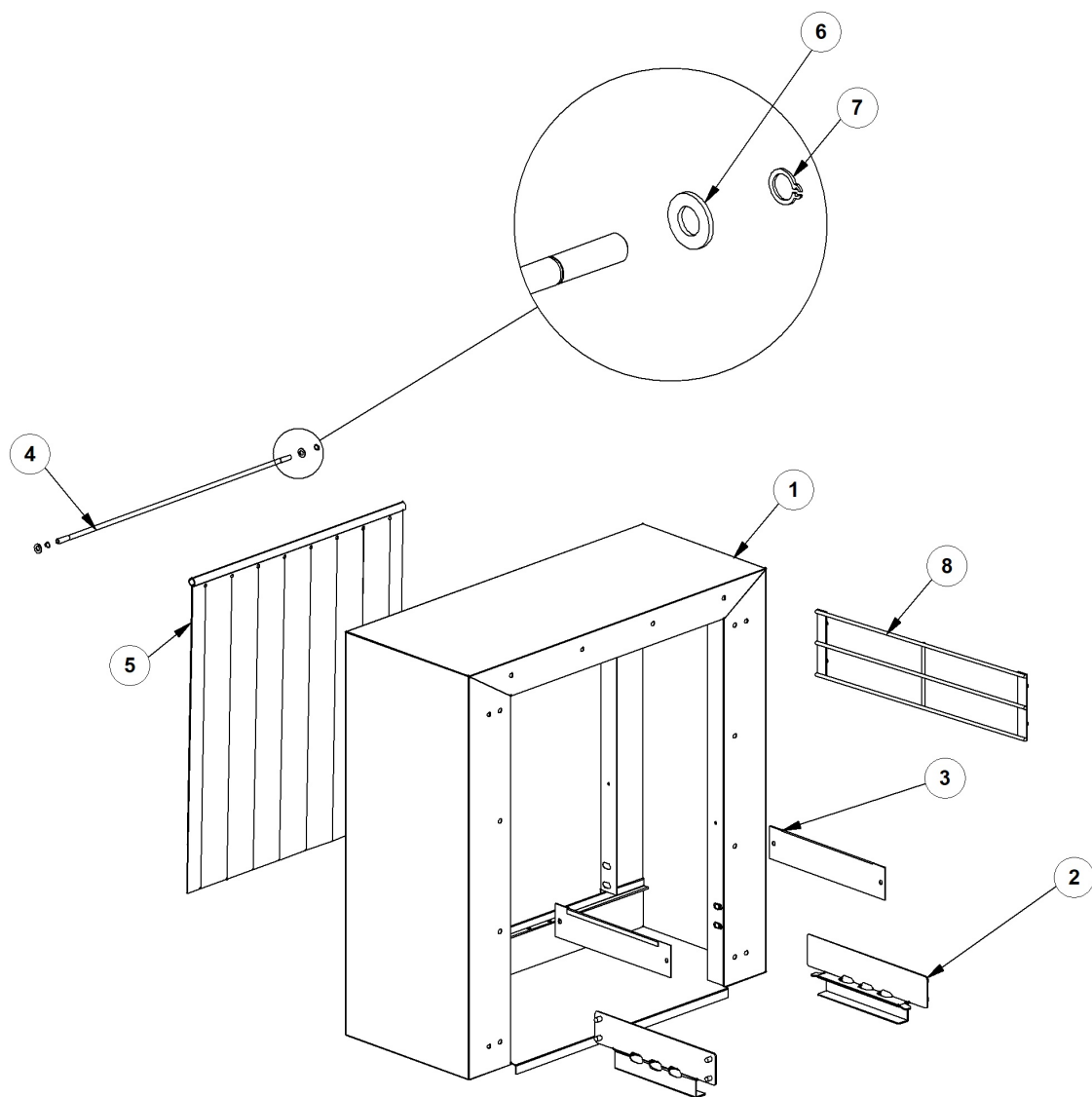
RX 246 SX DR64 HR10 380-400/3N/50 EAC - DWP1005958 - Rinsing components - DW220E

Pos.	Code	Descrizione	Description
1	DW3071058	ASS. RAMPA RISCIAQUO RX	RINSE RISER ASSEMBLY
2	DW3071059	#ASS. BRACCIO RISCIAQUO RX	RINSE ARM ASSEMBLY
3	DW540004	#TUBO MANDATA SUPER.EPDM RINF.TEK.4	TOP EPDM DELIVERY PIPE T4
4	DW18044	TUBO DIAM.28 EPDM LAV.SUP. STAR	D.28 EPDM PIPE
5	DW10701/B	PILETTA SCARICO DIRITTA	STRAIGHT FLOOR DRAIN
6	DW3071096	POMPA 0.27HP 220V 240 50Hz	PUMP HP0.27 220-240V/50HZ
7	DW2200120	UGELLO PRERISCIAQUO 1/8M GAS	PRERINSE NOZZLE 1/8M GAS
8	DW13002	GUARNIZIONE OR R6 NBR	O-RING R6 NBR (MIN. 10 PCS)
9	DW2200117	FILTRO A CUPOLA PER UGELLO A LAMA	NOZZLE FILTER
10	DW2200121	#UGELLO A LAMA 015 110 1/8 INOX	S/S NOZZLE 015 110 1/8
11	DW2200116	I-GHIERA 3/8F INOX	"S/S RING NUT 3/8" F"
12	DW2002051	GUARN. EPDM TAPPO RISC. D.17,5X1,5	GASKET EPDM D.17,5X1,5
13	DW3071057	ASS. RAMPA PRERISCIAQUO RX	PRE RINSE RISER ASSEMBLY
14	DW3071060	AS BRACCIO PRERISCIAQUO RX EVO-PRO	PRERINSE ARM ASSEMBLY
15	DW3071060	AS BRACCIO PRERISCIAQUO RX EVO-PRO	PRERINSE ARM ASSEMBLY
16	DW13326	GUARNIZIONE D.38X27X2	GASKET D.38X27X2
17	DW2200103	DADO 3/4 ES.32X8 OTTONE PER TRAINO	HEXAGONAL BRASS NUT 3/4
18	DW13025	GUARNIZIONE OR 2081	O-RING 2081
19	DW3003128	GOMITO DI CARICO G3/8	LOADING ELBOW G3/8
20	DW3009387	RONDELLA GOMITO CARICO	LOADING ELBOW WASHER
21	DW3003129	GOMITO PORTAGOMMA 12 - G3/8	ELBOW HOSE-CONNECTION 12 G3/8
22	DW3003130	GUARNIZIONE OR 123 NBR	O-RING 123 NBR
23	DW2002054	TAPPO M18X1 D21X9	PLUG M18X1 D21X9
24	DW15100/S	TENUTE ROTANTI EPDM(15100/DO)	EPDM ROTARY SEAL (15100/DO)
25	DW18245	#OR 91x1,78 POMPA HP0.33	O-RING
26	DW3071096/A	#CHIOCCIOLA POMPA L63 (PLA_104)	
27	DW13305	GUARN.GOM.SCARICO 44x32x3 DIS.LS061	O RING FOR DRAIN ELBOW 44x32x3 DIS.LS061
28	DW11701/A	DADO INOX PER PIL. SCAR.	S/S NUT



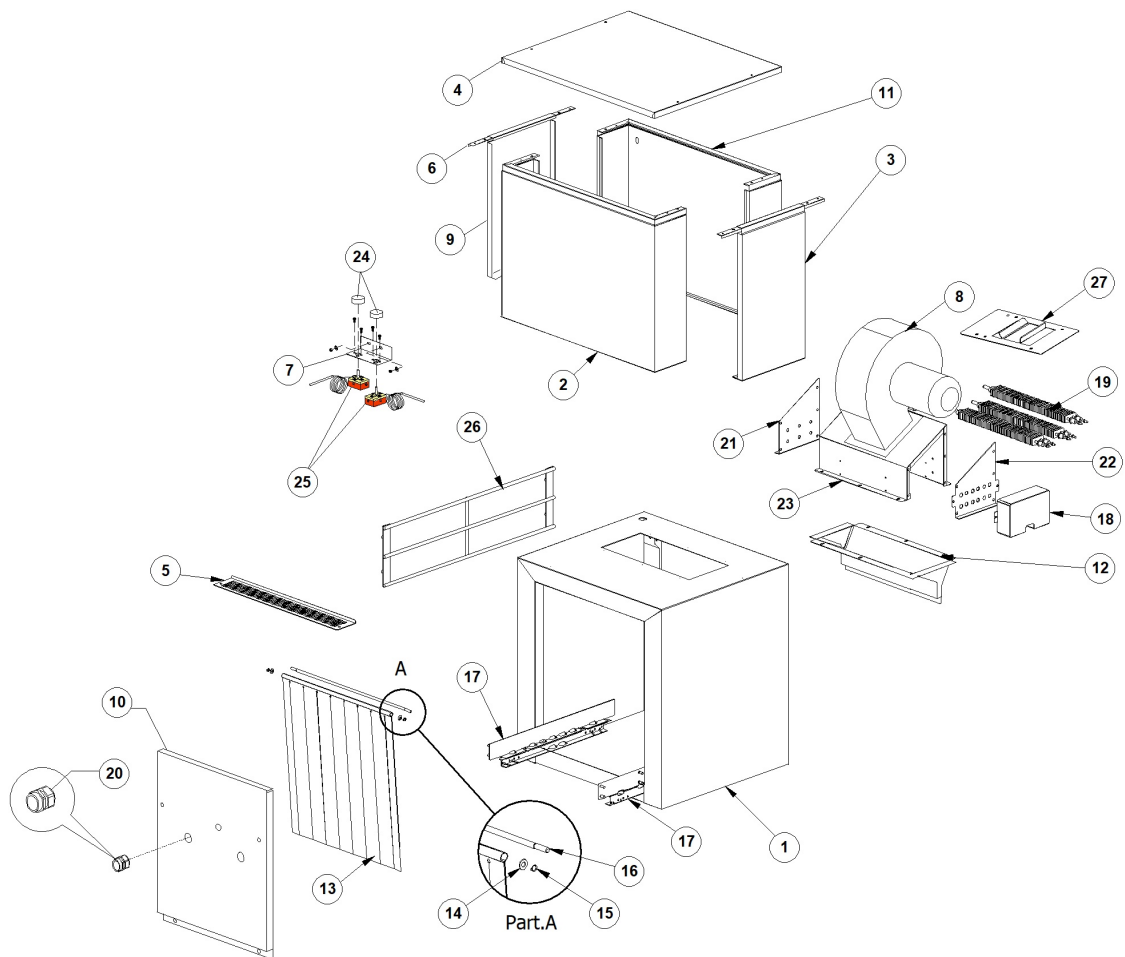
RX 246 SX DR64 HR10 380-400/3N/50 EAC - DWP1005958 - Drain - DW220E

Pos.	Code	Descrizione	Description
1	DW3060174	"CODULO CURV.DADO OTT.40X1"1/4PR"	"BENT TANG 40X1"1/4"
2	DW3060250	PP-TUBO 2 BICCH. HTDM 40/1,00	PP PIPE HTDM 40/1,00
3	DW3060175	PP-CURVA 90°∅ 87G30' HTB 40	
4	DW3060250	PP-TUBO 2 BICCH. HTDM 40/1,00	PP PIPE HTDM 40/1,00
5	DW3060250	PP-TUBO 2 BICCH. HTDM 40/1,00	PP PIPE HTDM 40/1,00
6	DW3060176	RACCORDO TI PP F-F-M 40	UNION TEE PP 40 F-F-M



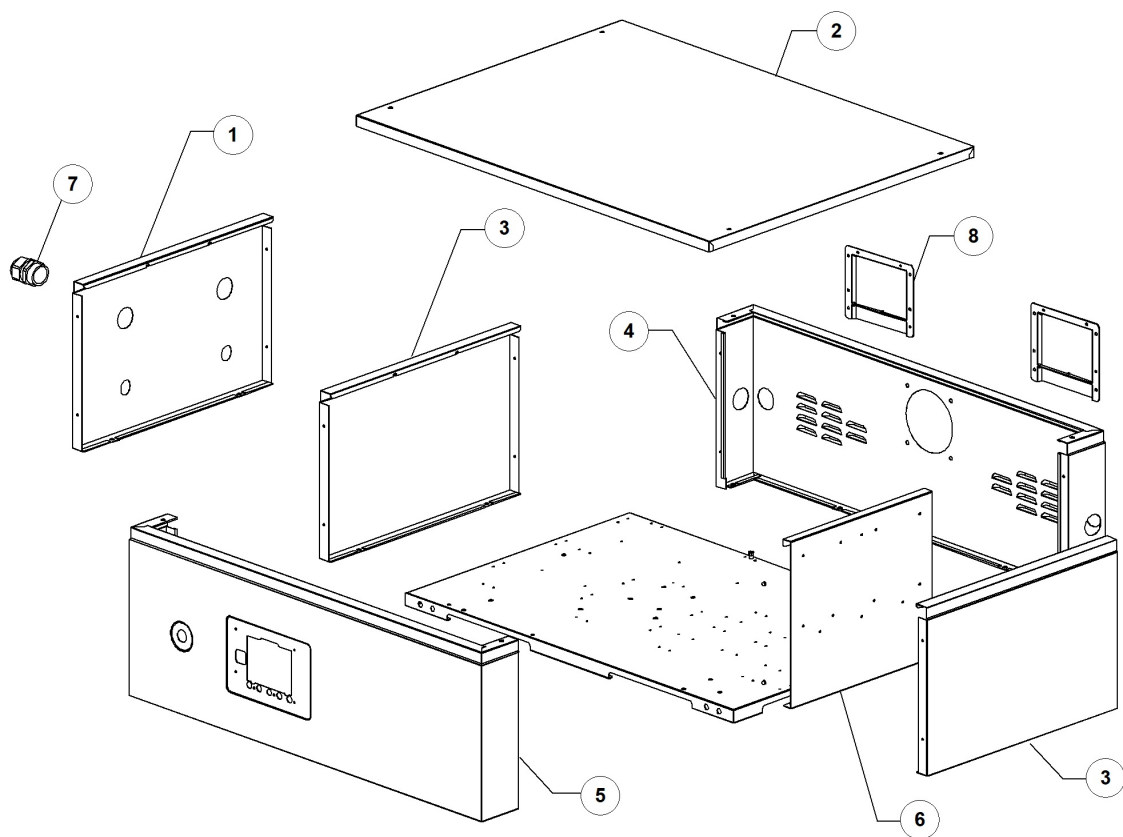
RX 246 SX DR64 HR10 380-400/3N/50 EAC - DWP1005958 - Splash guard L=300 - DW220E

Pos.	Code	Descrizione	Description
1	DW3070022	AS. PARASPRUZ 300 RX	
2	DW3070011	AS. GUIDA CESTO 300 RX	
3	DW3070161	PARATIA TENDINA PARASP.300 RX (N)	
4	DW3071069	ASSE TENDINA ESTERNA RX	EXTERNAL CURTAIN ROD
5	DW3071070	TENDINA PARASPRUZZI RX	SPLASH GUARD CURTAIN
6	DW11185	RONDELLA 8X16 PIANA INOX DIN125	8X16 S/S PLANE WASHER DIN125
7	DW11815	SEEGER DIAM.8 INOX UNI7435	SNAP RING D.8 S/S
8	DW3071314	GRIGLIA L 300 PER RX	OVERFLOW PIPE FOR VX231-VX231S RX2016



RX 246 SX DR64 HR10 380-400/3N/50 EAC - DWP1005958 - Drying - DW220E

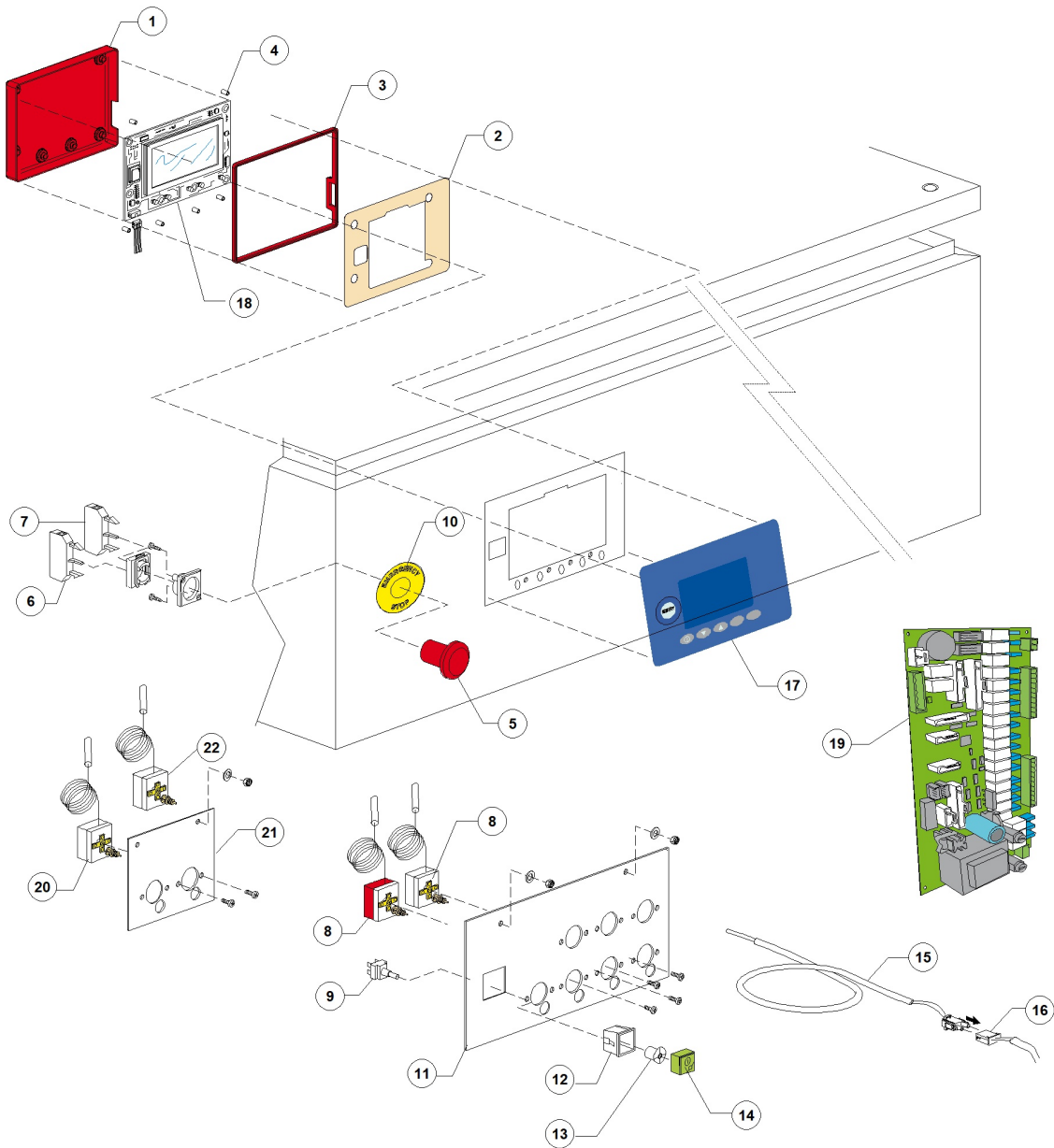
Pos.	Code	Descrizione	Description
1	DW3070024	AS. CASSONE ASCIUG 600 RX	
2	DW3070115	PIEG. CARTER ANT. ASCIUG 600 RX	
3	DW3070170	PIEG. PORTA ASCIUG 600 RX	
4	DW3070127	COPERCHIO ASCIUGATURA 600 RX	
5	DW3009362/B	RETE PROTEZIONE ASPIRAZIONE SUPERIO	
6	DW3070180	PIEG. RINF PORTA ASCIUG 600 RX	
7	DW3009104	PIEG. SQ. TERMOSTATI PER ASCIUGATUR (N)	DRYER THERMOSTATS SUPPORT
8	DW3003118	MOTOVENTILAT VMN604 0,25KW 230/400 50HZ	CENTRIFUGAL FAN 0,25KW 230/400V 50HZ
9	DW3070171	PIEG. PORTA ASCIUG 600 CON GELOSIE RX	
10	DW3070157	PANNELLO FRONT. PARASPRUZZI RX (N)	
11	DW3070123	PIEG. CARTER POST. ASCIUG 600 RX	
12	DW3070032	AS. TRAMOGGIA APERT 20mm RX (N)	
13	DW3071070	TENDINA PARASPRUZZI RX	SPLASH GUARD CURTAIN
14	DW11185	RONDELLA 8X16 PIANA INOX DIN125	8X16 S/S PLANE WASHER DIN125
15	DW11815	SEEGER DIAM.8 INOX UNI7435	SNAP RING D.8 S/S
16	DW3071069	ASSE TENDINA ESTERNA RX	EXTERNAL CURTAIN ROD
17	DW3070014	AS. GUIDA CESTO 600 RX	
18	DW3071078	SCATOLA COPRIRESISTENZE RX	BOITE DE PROTECTION RESISTANCES
19	DW3071075	RESISTENZA RETTANGOLARE 1,5 kW	1500W RECTANGULAR HEATING ELEM.
20	DW80414	PRESSACAVO PG21 OBO CON GHIERA	CABLE FITTING PG21 OBO WITH RING NUT
21	DW3070177/A	POST CARTER PER RES RET RX 2017 (N)	
22	DW3070142/A	FRONTE CARTER PER RES RET RX 2017 (N)	
23	DW3070120/A	#PIEG. CARTER PER RESIST ASCIUG RX 2017	
24	DW15105/C	MANOPOLA TERMOSTATO 0-300¶°C	THERMOSTAT KNOB 0-300¶°C
25	DW10707/3	TERMOSTATO TR2 0-280¶° C/ALB	THERMOSTAT TR2 0-280¶° C/ALB
26	DW3071317	GRIGLIA L 600 PER RX	OVERFLOW PIPE FOR VX231-VX231S RX2016



RX 246 SX DR64 HR10 380-400/3N/50 EAC - DWP1005958 - Panel - DW220E

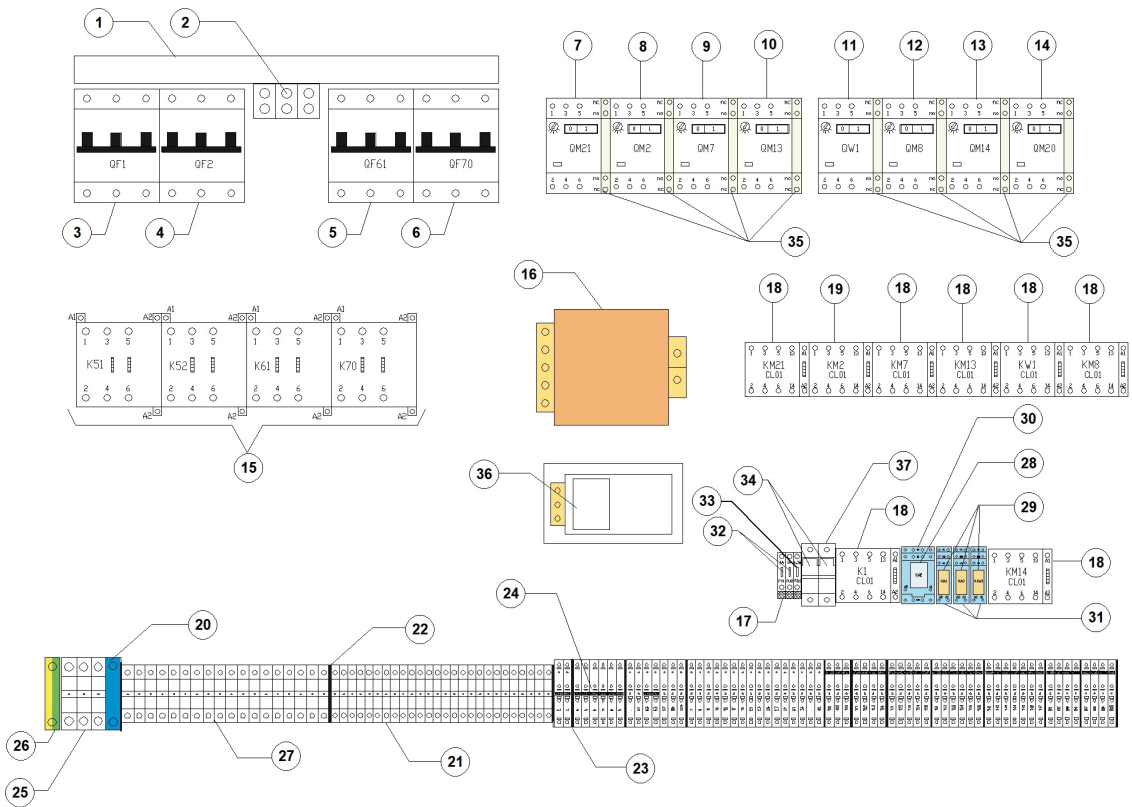
Pos.	Code	Descrizione	Description
1	DW3070375	PIEG. PORTA QUADRO PRO PER PG	ELECTRICAL CABINET DOOR
2	DW3070220	COPERCHIO QUADRO 850 RX PRO	CONTROL BOARD COVER 850
3	DW3070175	PIEG. PORTA QUADRO RX PRO-HR10-SC10-HR20	
4	DW3070217	PIEG. CARTER POS. QUADRO 850 RX PRO-EVO	
5	DW3070214/A	#CARTER ANT QUADRO RX PRO 850 STAMP DIHR	
6	DW3070215	PIASTRA SCHEDA O029_0 RX OPT-PRO	MAINBOARD SUPPORT PLATE
7	DW80419	PRESSACAVO PG29 OBO	CABLE FITTING PG29 OBO
8	DW3071286	CARTER PER IPX4 /IPX5 ESTERNO	EXTERNAL PROTECTION IPX4/IPX5

RX 246 SX DR64 HR10 380-400/3N/50 EAC - DWP1005958 - Control panel and switches - DW220E



RX 246 SX DR64 HR10 380-400/3N/50 EAC - DWP1005958 - Control panel and switches - DW220E

Pos.	Code	Descrizione	Description
1	DW50650/A	SCATOLA PROT. SCHEDA 50650 (168X122X19)	ELECTRONIC BOARD PROTECTION BOX 50650
1	DW590122	SCATOLA PROT. SCHEDA 50650 PER TWIN STAR	ELECTRONIC BOARD PROTEC.BOX 50650 ARMA
2	DW96716	PROTEZ. ISOLANTE ADES. DISPLAY 240X160	PUSH BUTTON PANEL INSULATING PROTECTION
3	DW50650/B	GUARNIZIONE PER SCATOLA 50650/A	PROTECTION BOX GASKET DW50650/A
4	DW50586	"DIST.FISS.TASTIERA "ELITE""	KEY-BOARD SPACER
5	DW3002050	PULS.FUNGO D.35 OP.SBLOC.ROT. 30A3	EMERGENCY BUTTON
6	DW3002056	CONTATTO 1NC RET. 31A5	CONTACT 1NC
7	DW3002054	CONTATTO 1NA	CONTACT 1NA
8	DW2000430	TERMOSTATO DI SICUR. 110 1500PVC	SAFETY THERMOSTAT 110 1500PVC
9	DW15812	FRUTTO INTERRUTTORE 16A	16A SWITCH
10	DW391076	MOSTRINA FUNGO EMERGENZA DIAM.54	CONTROL OVERLAY EMERGENCY STOP
11	DW3009114	PUNZ. STAFFA SUPP. TERMOSTATI PRERI	ASSEMBLY PLATE
12	DW15815	SUPPORTO QUADRO SQ1 SINGOLO GRIGIO	SQUARE GREY SINGLE SUPPORT SQ1
13	DW15824	CAMMA VERDE-ARANCIO	GREEN-ORANGE CAM ROLL
14	DW15874	TASTO Q6 VERDE SERIG.ON-OFF	GREEN ON/OFF KEY Q6
15	DW3006165	SONDA TERMOSTATO SCHEDA TUNNEL	THERMOSTAT PROBE
16	DW3006170	PROLUNGA Sonda TERM. SCHEDA TUNNEL	THERMOSTAT PROBE EXTENSION
17	DW96704	MOSTR.TAST.MEMBR.DIHR DISPLAY 240X160	SELF-ADHESIVE SILK-SCREEN PRINTED PLATE
18	DW3071154	#TASTIERA CON DISPLAY VERSIONE RX PRO NB	KEYBOARD WITH DISPLAY
19	DW3071138	#SCHEDA ELETTRONICA TUNNEL 2014	MAINBOARD 2014 CONVEYOR MACHINE
20	DW3072158	TERMOSTATO DI SICUR. 90 1500PVC	SAFETY THERMOSTAT 90 1500PVC
21	DW3070350	STAFFA TERMOSTATI RX	
22	DW10707/1	TERM.0-90 TR2 C1500+PVC POST.N/ALB	THERMOSTAT 0-90 TR2 C1500+PVC POST.N/ALB

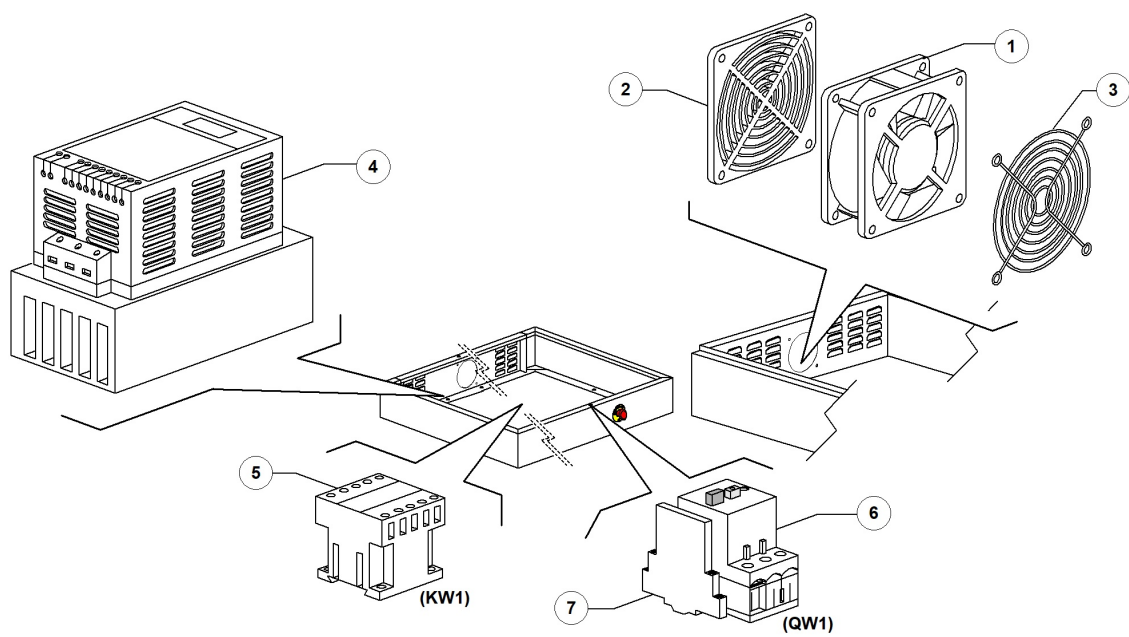


RX 246 SX DR64 HR10 380-400/3N/50 EAC - DWP1005958 - Control panel and switches - DW220E

Pos.	Code	Descrizione	Description
1	DW3071131	BARRA TRIFASE DI COLLEG.MAGNETOTERMICI	THREE PHASE CONNECTING BAR
2	DW3071132	MORSETTO DI COLLEG BARRA MAGNETOTERMICI	CONNECTING TERMINAL FOR MAGNETOTHERMICS
3	DW2000407	INT. MAGNETOTERMICO TRIPOLARE 16A	THREE-POLE CIRCUIT BREAKER 16A
3	DW2000412	INT. MAGNETOTERM. TRIPOLARE 10A (672297)	
4	DW2000407	INT. MAGNETOTERMICO TRIPOLARE 16A	THREE-POLE CIRCUIT BREAKER 16A
4	DW2000412	INT. MAGNETOTERM. TRIPOLARE 10A (672297)	
5	DW2000407	INT. MAGNETOTERMICO TRIPOLARE 16A	THREE-POLE CIRCUIT BREAKER 16A
6	DW2000407	INT. MAGNETOTERMICO TRIPOLARE 16A	THREE-POLE CIRCUIT BREAKER 16A
6	DW2000412	INT. MAGNETOTERM. TRIPOLARE 10A (672297)	
7	DW2000389	INT.SALVAMOTORE MAGNETOTERM.0,63-1A	CIRCUIT BREAKER 0,63-1A
7	DW2000390	INT.SALVAMOTORE MAGNETOTERM. 1-1,6A	CIRCUIT BREAKER 1-1,6A
7	DW2000393	INT.SALVAMOTORE MAGNETOT.1,6-2,5A	CIRCUIT BREAKER 1,6-2,5A
8	DW2000394	INT.SALVAMOTORE MAGNETOTERM.2,5-4A	CIRCUIT BREAKER 2,5-4A
10	DW2000390	INT.SALVAMOTORE MAGNETOTERM. 1-1,6A	CIRCUIT BREAKER 1-1,6A
10	DW2000393	INT.SALVAMOTORE MAGNETOT.1,6-2,5A	CIRCUIT BREAKER 1,6-2,5A
11	DW2000393	INT.SALVAMOTORE MAGNETOT.1,6-2,5A	CIRCUIT BREAKER 1,6-2,5A
12	DW2000390	INT.SALVAMOTORE MAGNETOTERM. 1-1,6A	CIRCUIT BREAKER 1-1,6A
12	DW2000393	INT.SALVAMOTORE MAGNETOT.1,6-2,5A	CIRCUIT BREAKER 1,6-2,5A
13	DW2000390	INT.SALVAMOTORE MAGNETOTERM. 1-1,6A	CIRCUIT BREAKER 1-1,6A
13	DW2000394	INT.SALVAMOTORE MAGNETOTERM.2,5-4A	CIRCUIT BREAKER 2,5-4A
14	DW2000389	INT.SALVAMOTORE MAGNETOTERM.0,63-1A	CIRCUIT BREAKER 0,63-1A
15	DW2000385	TELERUTTORE 36A/20A 24V 50/60Hz	CONTACTOR 36A/20A 24V 50/60Hz
16	DW3006061	TRASF.200VA 0-230-400-415-440/0-24V	TRANSFORMER200VA 0-230-400-415-440/0-24V
17	DW3006147	MORSETTO PORTAFUSIBILI 5x20 (5x25)	FUSE CARRIER
18	DW2000370	TELERUTTORE 9A/16A 24V 50/60Hz	CONTACTOR 9A/16A 24V 50/60Hz
19	DW2000370	TELERUTTORE 9A/16A 24V 50/60Hz	CONTACTOR 9A/16A 24V 50/60Hz
20	DW3006087	MORSETTO DI USCITA TRIPOL. X LMS25	TERMINAL BLOCK FOR LMS25
21	DW3006092	MORSETTO 4mmQ RK2.5-4	TERMINAL 4mmq
22	DW3006144	PIASTRINA CHIUSURA X PORTAFUSIBILE	TERMINAL STK1 END PLATE
23	DW3071123	PIASTRINA TERMINALE PER MORSETTO (ZAP/TW	TERMINAL STOP PLATE
24	DW3071122	MORSETTO 2.5mm DOPPIO A MOLLA (ZDK 2.5)	TERMINAL 2,5mmq DOUBLE
25	DW10300403	MORSETTO 6mmq	TERMINAL 6mmq
25	DW3006090	MORSETTO 35mmQRK25	TERMINAL 35mmq
26	DW3006091	MORSETTO 35mmQ GIALLO/VERDE	TERMINAL 35mmq YELLOW/GREEN
27	DW10300403	MORSETTO 6mmq	TERMINAL 6mmq
28	DW3071140	RELE' MODUL. 4C/DEV. 24V 7A	
29	DW3006078	RELE' MODUL. 2C/DEV. 24V	MODULAR RELAY 2C/DEV. 24V
30	DW3071141	ZOCOLO X RELE'MODUL.4C/24V 10A	
31	DW3006079	ZOCOLO X RELE'MODUL.2C/24V	BASE FOR RELAY 2C/24V
32	DW15163	FUSIBILE 5X20 1A	5X20 1A FUSE
33	DW15174	FUSIBILE 5X20 6.3A RITARDATO	

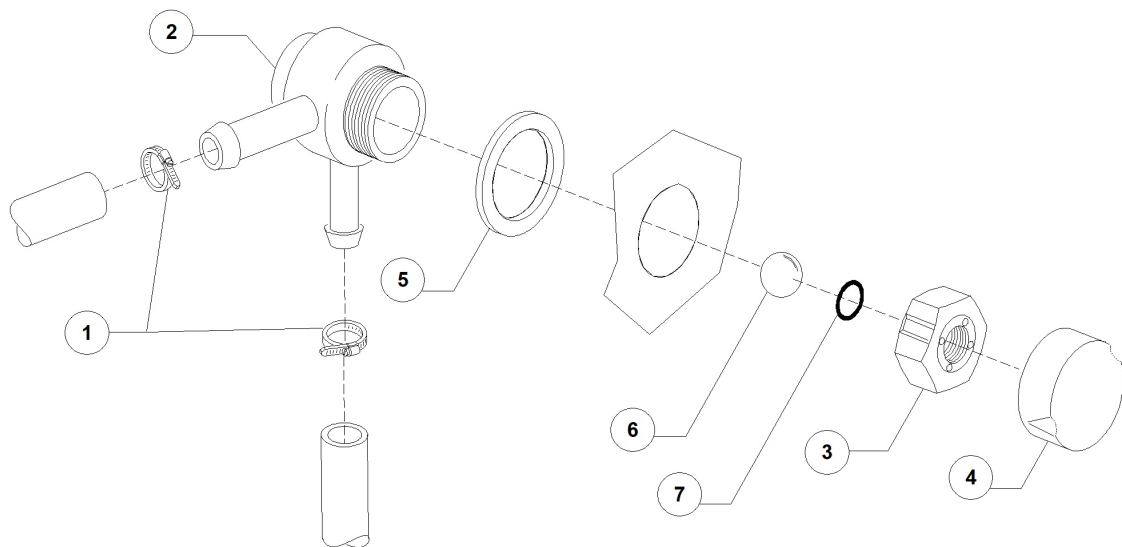
RX 246 SX DR64 HR10 380-400/3N/50 EAC - DWP1005958 - Control panel and switches - DW220E

Pos.	Code	Descrizione	Description
35	DW3006080	CONTATTO AUX. LMS25 11LMH11 1NA+1NC	AUXILIARY CONTACT LMS25 11LMH11 1NA-1NC
36	DW3000117	INVERTER MONOFASE 240V 0,55 KW	INVERTER 240V 0,55KW
37	DW3006109	PORTAFUS. 10X38 BIPOL.	



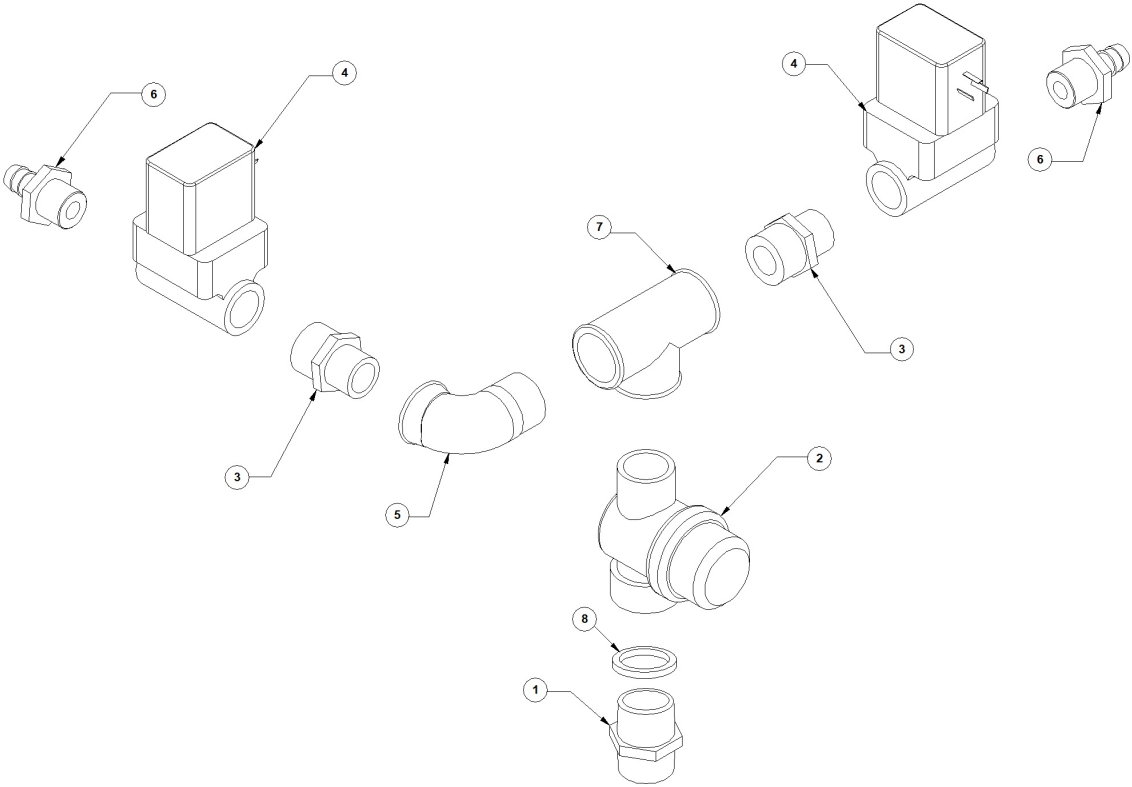
RX 246 SX DR64 HR10 380-400/3N/50 EAC - DWP1005958 - Speed adjuster - DW220E

Pos.	Code	Descrizione	Description
1	DW3000118	VENTOLA 120X38 220VAC PER INVERTER	IMPELLER FAN 120X38 220VAC FOR INVERTER
2	DW3000118/A	FILTRO PLAST INVERTER 120X120	INVERTER PLASTIC FILTER 120X120
3	DW3000118/B	GRIGLIA PROTEZ.INVERTER 120MM	INVERTER PROTECTION GRID 120MM
4	DW3000117	INVERTER MONOFASE 240V 0,55 KW	INVERTER 240V 0,55KW
5	DW2000370	TELERUTTORE 9A/16A 24V 50/60Hz	CONTACTOR 9A/16A 24V 50/60Hz
6	DW2000393	INT.SALVAMOTORE MAGNETOT.1,6-2,5A	CIRCUIT BREAKER 1,6-2,5A
7	DW3006080	CONTATTO AUX. LMS25 11LMH11 1NA+1NC	AUXILIARY CONTACT LMS25 11LMH11 1NA-1NC



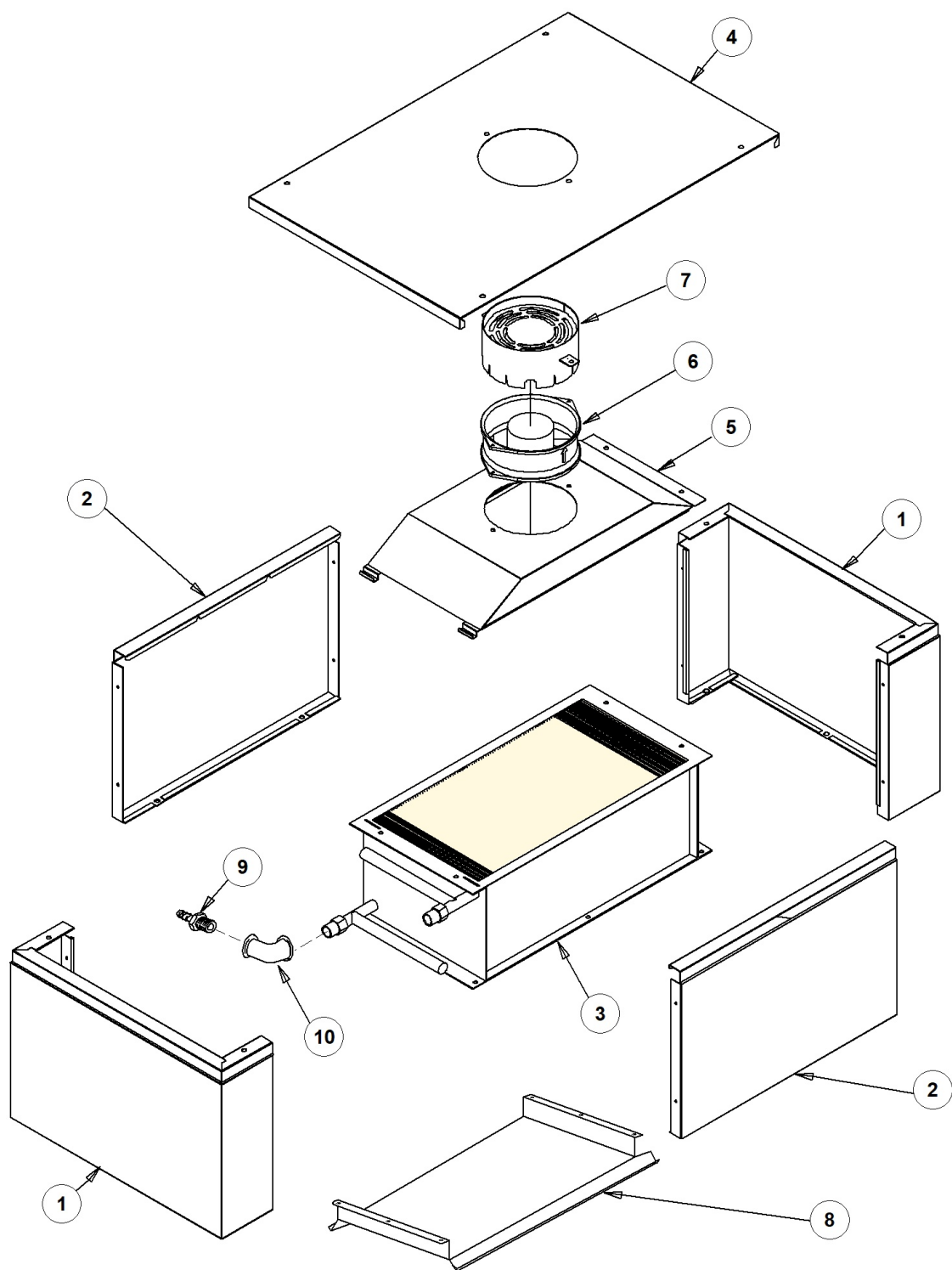
RX 246 SX DR64 HR10 380-400/3N/50 EAC - DWP1005958 - DVGW valve - DW220E

Pos.	Code	Descrizione	Description
1	DW11807	FASCETTE AISI 430 12/22	CLAMP 12/22 AISI 430
2	DW15280	CORPO CENTRALE VALVOLA DVGW 07	DRAIN VALVE CENTER BODY
3	DW15281	DADO VALVOLA DVGW 07	VALVE NUT
4	DW15282	COPRI DADO VALVOLA DVGW 07	VALVE NUT COVER
5	DW15283	GUARNIZIONE VALVOLA DVGW 07	VALVE GASKET
6	DW15284	"SFERA 5/8" VALVOLA DVGW 07"	"5/8" BALL FOR DVGW VALVE 07"
7	DW15285	GUARNIZIONE OR 115 KTW VALVOLA DVGW 07	O-RING 115 KTW



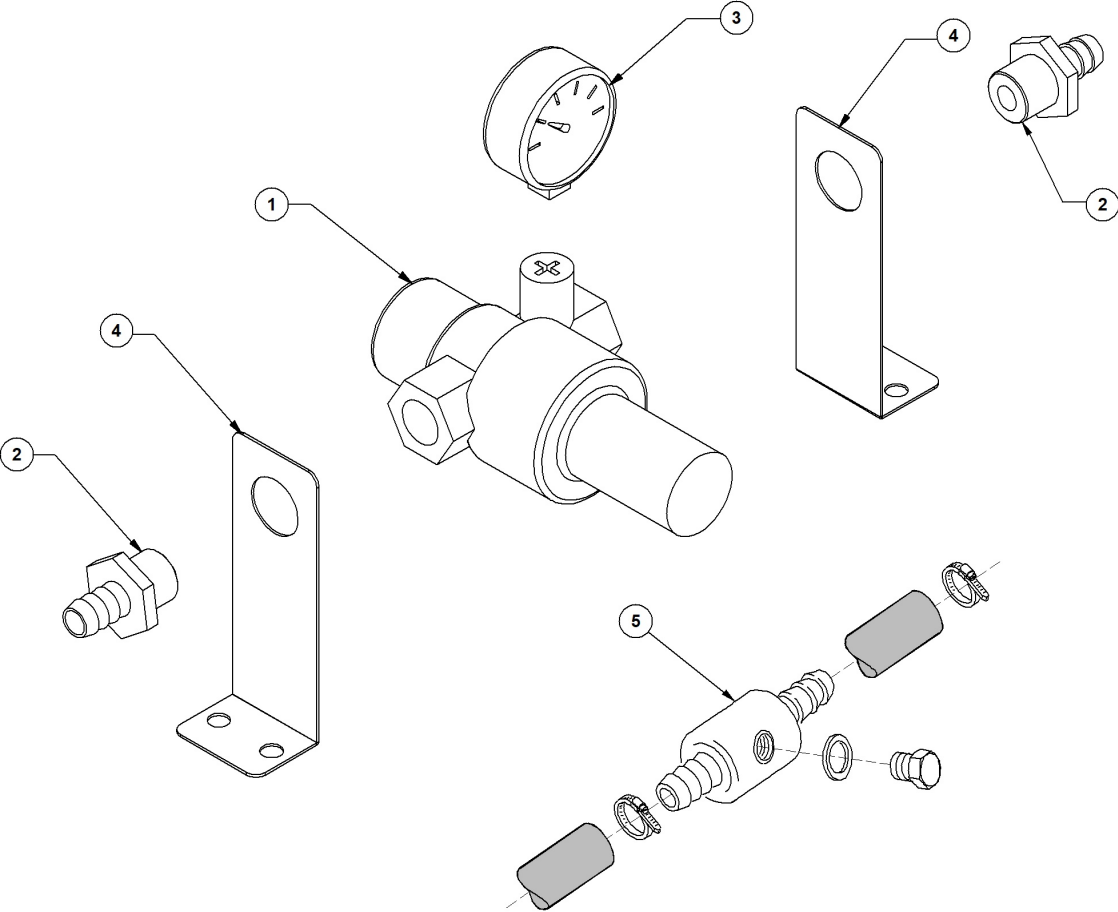
RX 246 SX DR64 HR10 380-400/3N/50 EAC - DWP1005958 - Solenoid valve group - DW220E

Pos.	Code	Descrizione	Description
1	DW3071197	"RACCORDO INOX NIPPLO 3/4" M-M"	"S/S NIPPLE PIPE FITTING 3/4" M-M"
2	DW2000121	"FILTRO LINEA CARICO ACQ. 3/4" FF/MF"	"WATER LOADING FILTER 3/4" F-F/M-F"
3	DW3071205	RACCORDO INOX NIPPLO DI RIDUZ 3/4 M-1/2M	"S/S NIPPLE PIPE FITTING M3/4"-M1/2""
4	DW3002030	"ELETTROVALV. OT58 1/2" 24V 50/60HZ"	"SOLENOID VALVE OT58 1/2" 24V 60HZ"
5	DW3071193	RACCORDO INOX GOMITO M/F 3/4	"S/S UNION ELBOW 3/4" M-F"
6	DW3071299	PORTAGOMMA M 1/2 DIAM 12 PG260 INOX	S/S HOSE CONNECTOR 10 M1/2 PG260
7	DW3071217	RACCORDO INOX T 3/4 F-F-F	"S/S UNION TEE 3/4" F-F-F"
8	DW13326	GUARNIZIONE D.38X27X2	GASKET D.38X27X2



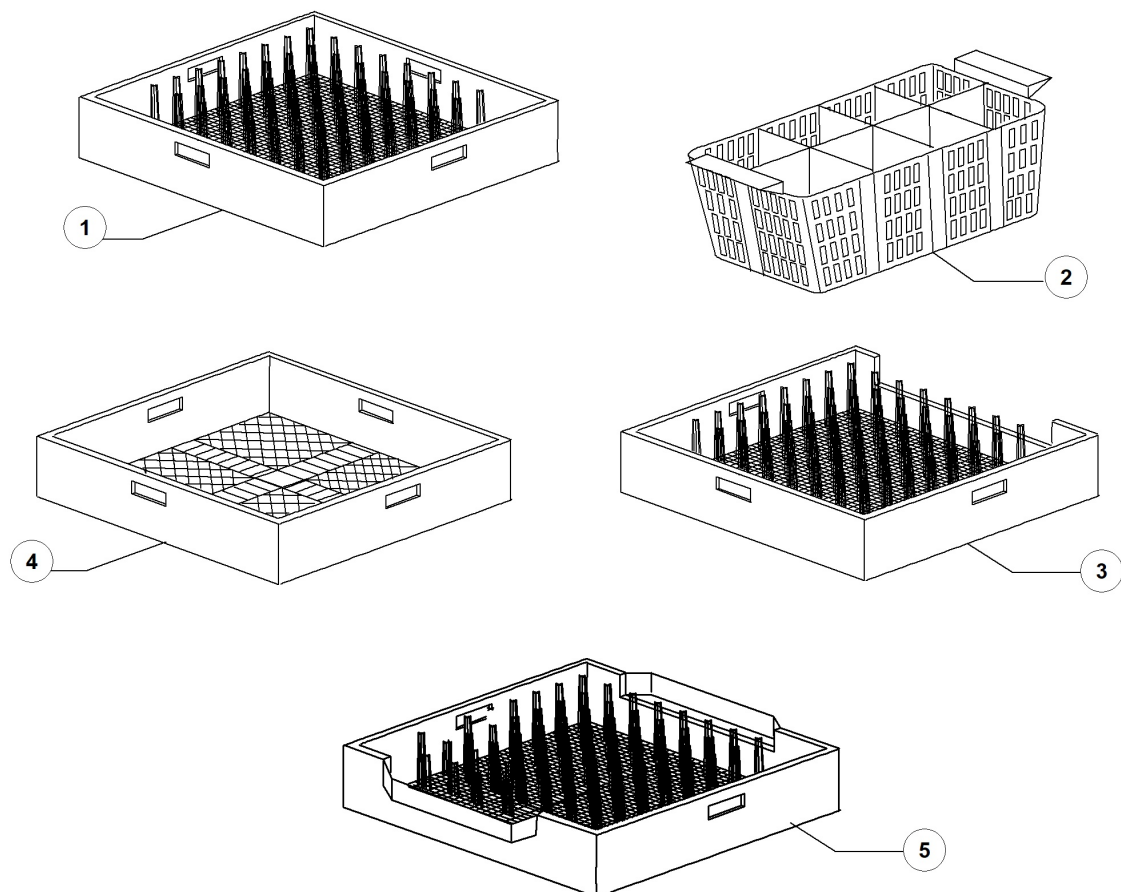
RX 246 SX DR64 HR10 380-400/3N/50 EAC - DWP1005958 - Heat recovery/Steam condenser - DW220E

Pos.	Code	Descrizione	Description
1	DW3070224	PIEG. CARTER HR10-SC10-HR5 RX	
2	DW3070175	PIEG. PORTA QUADRO RX PRO-HR10-SC10-HR20	
3	DW3000155	BATTERIA TRAINO CONDENSA VAPORI LC	STEAM CONDENSER COIL LC
4	DW3070226	COPERCHIO HR10 RX	HEAT RECOVERY COVER
5	DW3070259	PIEG BASE SUPPORTO VENT HR10-HR5-SC10 RX	STEAM CONDEN./HEAT RECOVERY FAN SUPPORT
6	DW11600715	MOTOVENTIL. 230 V/50-60 HZ TRAINO	CENTRIFUGAL FAN 230V 50/60HZ
7	DW3071115	AS CAMINO HR10 RX	CHIMNEY ASSEMBLY FOR HEAT RECOVERY
8	DW3070261	PIEG. PARASP. PRESA D'ARIA RX PRO-EVO	SPLASH GUARD
9	DW3071299	PORTAGOMMA M 1/2 DIAM 12 PG260 INOX	S/S HOSE CONNECTOR 10 M1/2 PG260
10	DW3071188	"RACCORDO INOX GOMITO F/F 1/2""	"S/S UNION ELBOW 1/2" F-F"



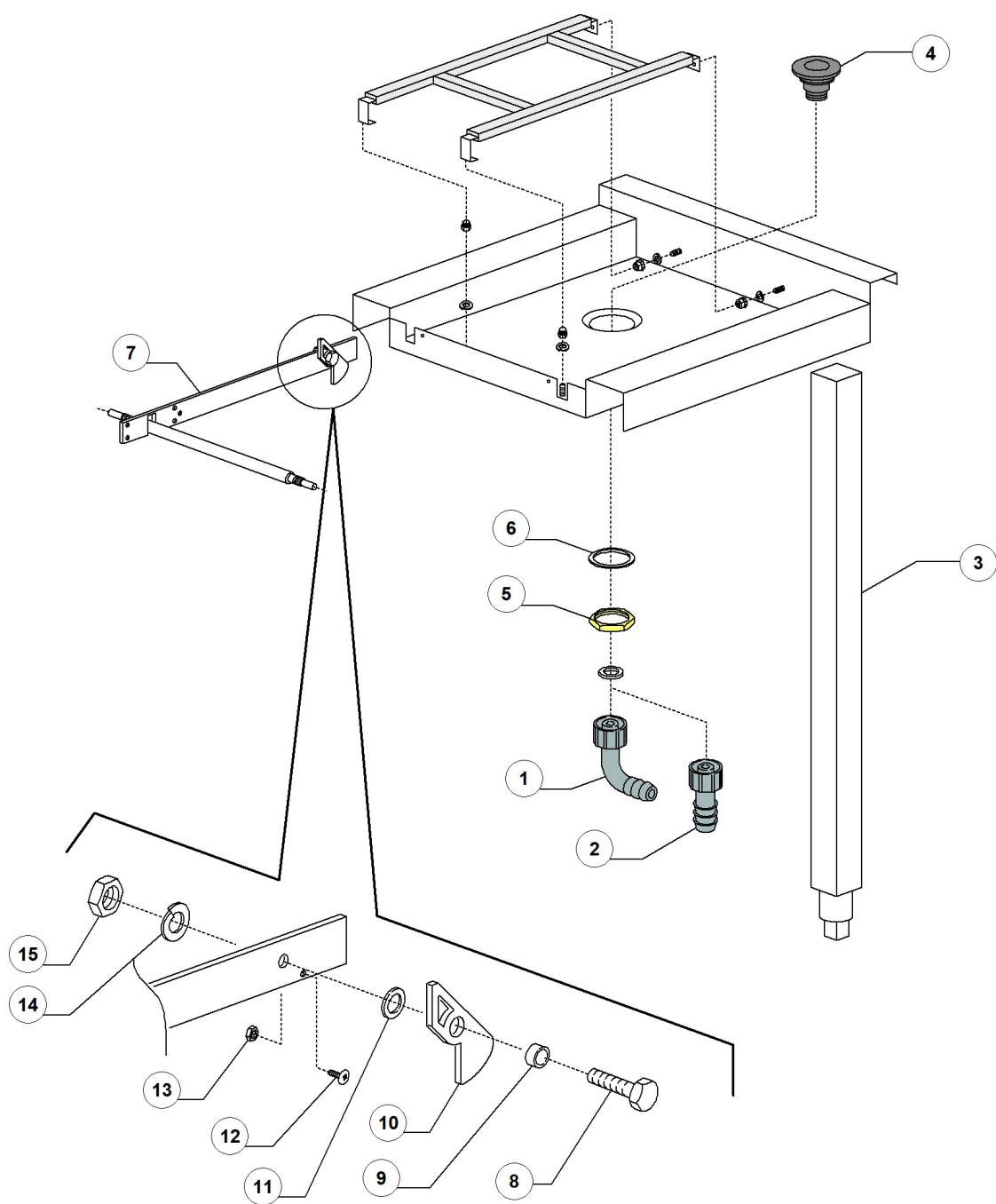
RX 246 SX DR64 HR10 380-400/3N/50 EAC - DWP1005958 - Solenoid valve group - DW220E

Pos.	Code	Descrizione	Description
1	DW2000364	"RIDUTTORE DI PRESS.FILTRO INOX 1/2""	"1/2" PRESSURE REDUCER S/S FILTER"
2	DW3071299	PORTAGOMMA M 1/2 DIAM 12 PG260 INOX	S/S HOSE CONNECTOR 10 M1/2 PG260
3	DW2000244	"MANOMETRO RIDUTTORE PRESS. 1/4"CONIC"	"PRESSURE REDUCTION GAUGE 1/4""
4	DW3009439	SUP. ELETTROVALVOLA PER AX NORMALE	SOLENOID VALVE SUPPORT
5	DW3003906	#DERIV. A T ENTR. BRILL. CON TAPPO 1/8	"T-PIECE W/PLUG 1/8""



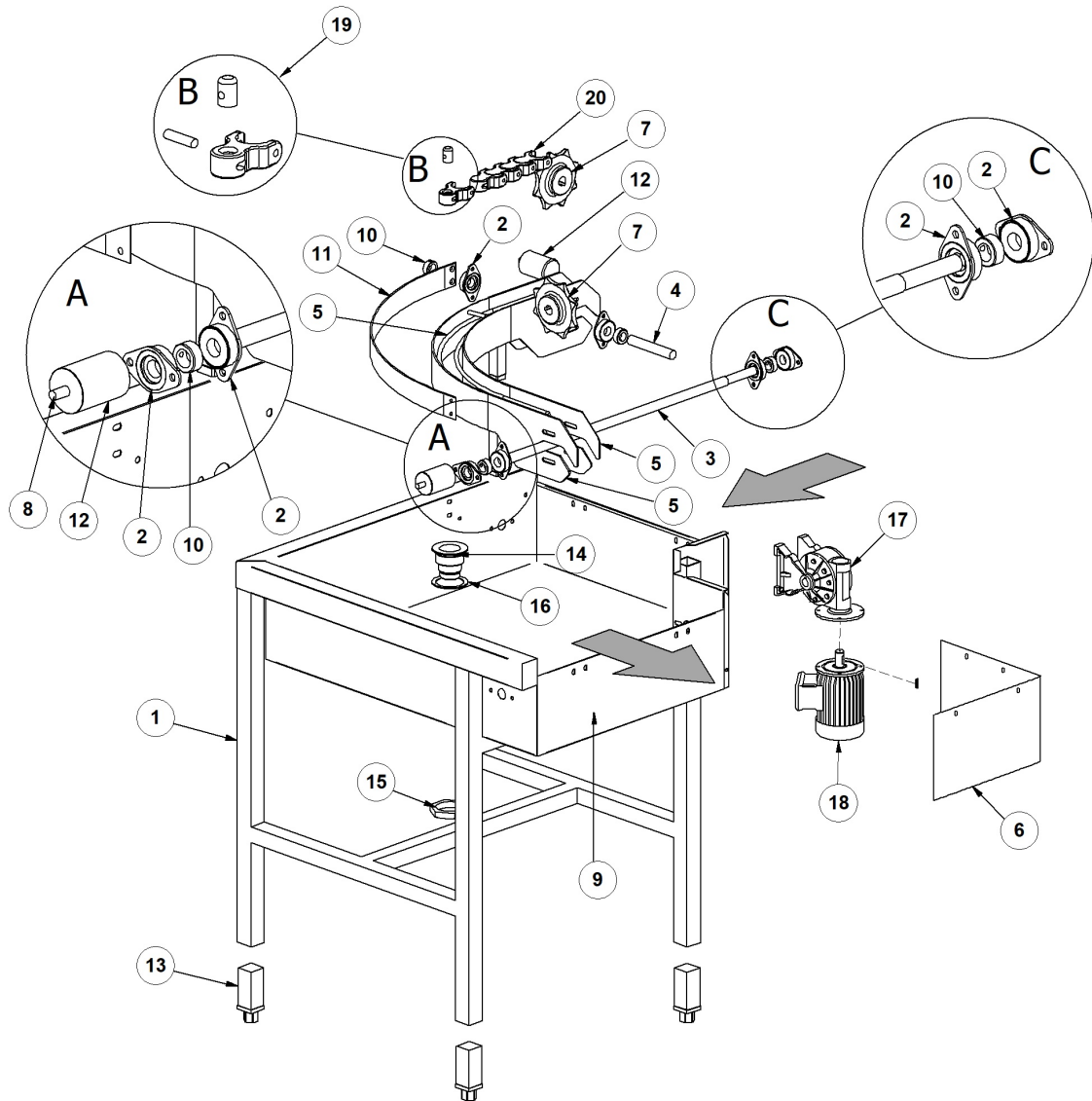
RX 246 SX DR64 HR10 380-400/3N/50 EAC - DWP1005958 - Baskets - DW220E

Pos.	Code	Descrizione	Description
1	DWC40	CESTO PIATTI PLASTICA 50X50	PLASTIC PLATES BASKET 500X500
2	DWC47	CESTELLO POSATE 8 POSTI	CUTLERY BASKET 8 PLACES
3	DWC43	CESTO TRAINO VASSOI (LATO APERTO)	TRAYS BASKET (ONE SIDE OPEN)
4	DWC44	CESTO BICCHIERI MAGL.LARGA PLASTICA	500X500 LARGE MESH GLASS BASKET



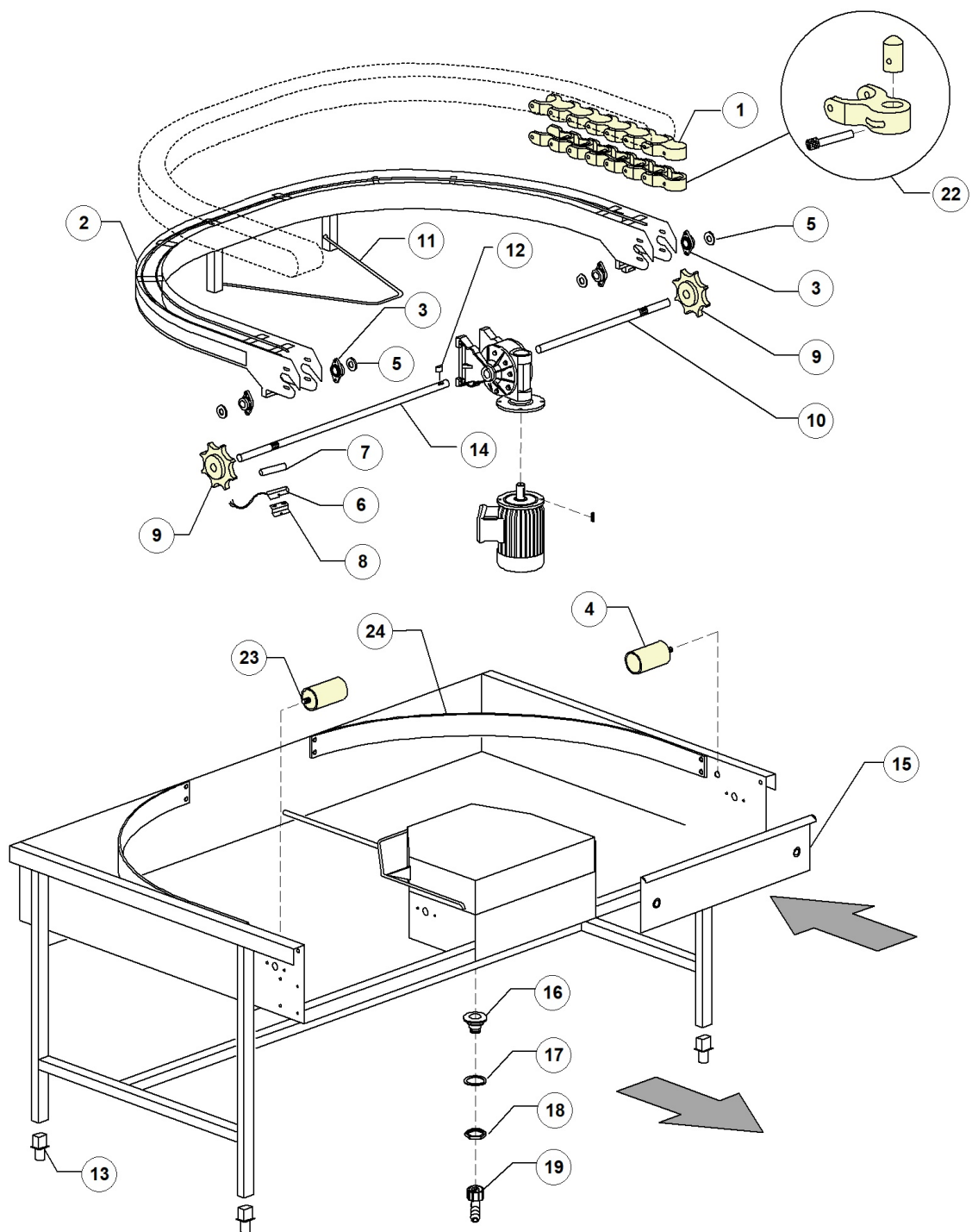
RX 246 SX DR64 HR10 380-400/3N/50 EAC - DWP1005958 - Angle loading table - DW220E

Pos.	Code	Descrizione	Description
1	DW15613	"GOMITO NYLON SCARICO 1"1/4X32"	"DRAIN ELBOW 1" 1/4X32"
2	DW15613/A	"PORTAGOMM.SCARICO 1"1/4X32 DRITTO"	"STRAIGHT HOSE CONNECTOR 1"1/4X32"
3	DW3009608	#ASS.GAMBA PER LC98	LEG ASSEMBLY
4	DW10200113	PILETTA SCARICO	FLOOR DRAIN
5	DW10200114	DADO PILETTA G2 ESA-75	FLOOR DRAIN NUT
6	DW10200173	GUARNIZIONE 75X58X2	75X58X2 GASKET
7	DW3003071	SUPPORTO ARPIONE TAV. ANG. 35X6X450	ANGLE TABLE PAWL SUPPORT
7	DW3003071/A	SUPP. MAGG. ARPIONE TAV. ANG. 35X6X600	
8	DW11128	VITE INOX M10X25 TE DIN933	M10X25 TE S/S SCREW
9	DW3003060	DISTANZ. PER ARPIONE SU TAV. E CURVE MEC	PAWL SPACER
10	DW3063009	ARPIONE INOX C. MECC.	MECHANIZED ARC S/S PAWL
11	DW3003024	RONDELLA CARRELLO 19X12X1 PTFE	WASHER 19X12X1 PTFE
12	DW11197	VITE M5X10 TCB INOX DIN 7985	M5X10 TCB S/S SCREW DIN7985
13	DW11707	DADO M5 CIECO CALOTTA SEMISF. A2 DIN1587	S/S CAP NUT M5 DIN1587
14	DW11192	RONDELLA GROWER M10 INOX DIN 127B	M10 S/S GROWER WASHER DIN127B
15	DW11719	DADO M10 INOX DIN 934	S/S NUT M10 DIN934



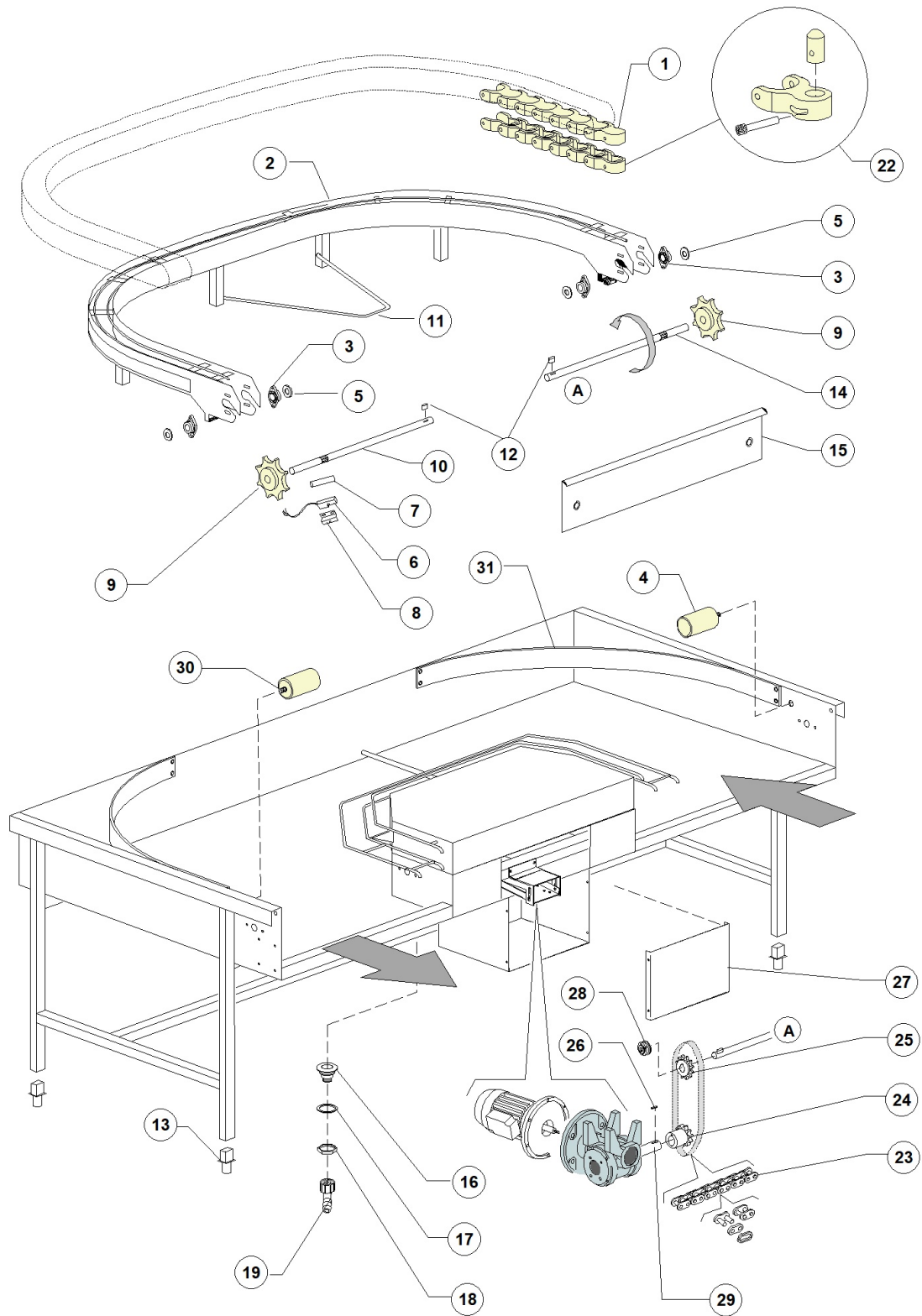
RX 246 SX DR64 HR10 380-400/3N/50 EAC - DWP1005958 - 90° motorized curve - DW220E

Pos.	Code	Descrizione	Description
2	DW3000260	SUPP.FLANGIATO CATENA CURVA SFT20	FLANGE FOR CHAIN
3	DW3003047	ALBERO ROTAZ.CATENA C.M.	SHAFT FOR MOTORIZED ARC CHAIN ROTATION
7	DW3000261	PIGNONE 8 DENTI D.130.6	8 TEETH PINION D.130.6
8	DW3003030	DISTANZIALE PER RULLI 5/16X1 - L55	ROLLER SPACER D.10X1 L55
10	DW3003048	DISTANZIALE CUSCIN.ALB.C.M.	SPACER FOR BEARINGS
11	DW3009312	PIATTO GUIDA CESTO C.M.90° Ø	
12	DW3000262	RULLO A SBALZO D.50X80 M8X25	50X80 EMBOSMENT ROLLER
13	DW3000252	"PIEDINO INOX 1" PER TUBO 40X40X1"	"S/S 1" FOOT"
14	DW10200113	PILETTA SCARICO	FLOOR DRAIN
15	DW10200114	DADO PILETTA G2 ESA-75	FLOOR DRAIN NUT
16	DW10200173	GUARNIZIONE 75X58X2	75X58X2 GASKET
19	DW3000270	SPINTORE+SUPP.+PERN.PER CAT.REGINA	PUSHER+SUPPORT + PIN FOR CHAIN
20	DW3000259	CATENA PER CURVA MOD. 1702 1-11-1	ARC CHAIN



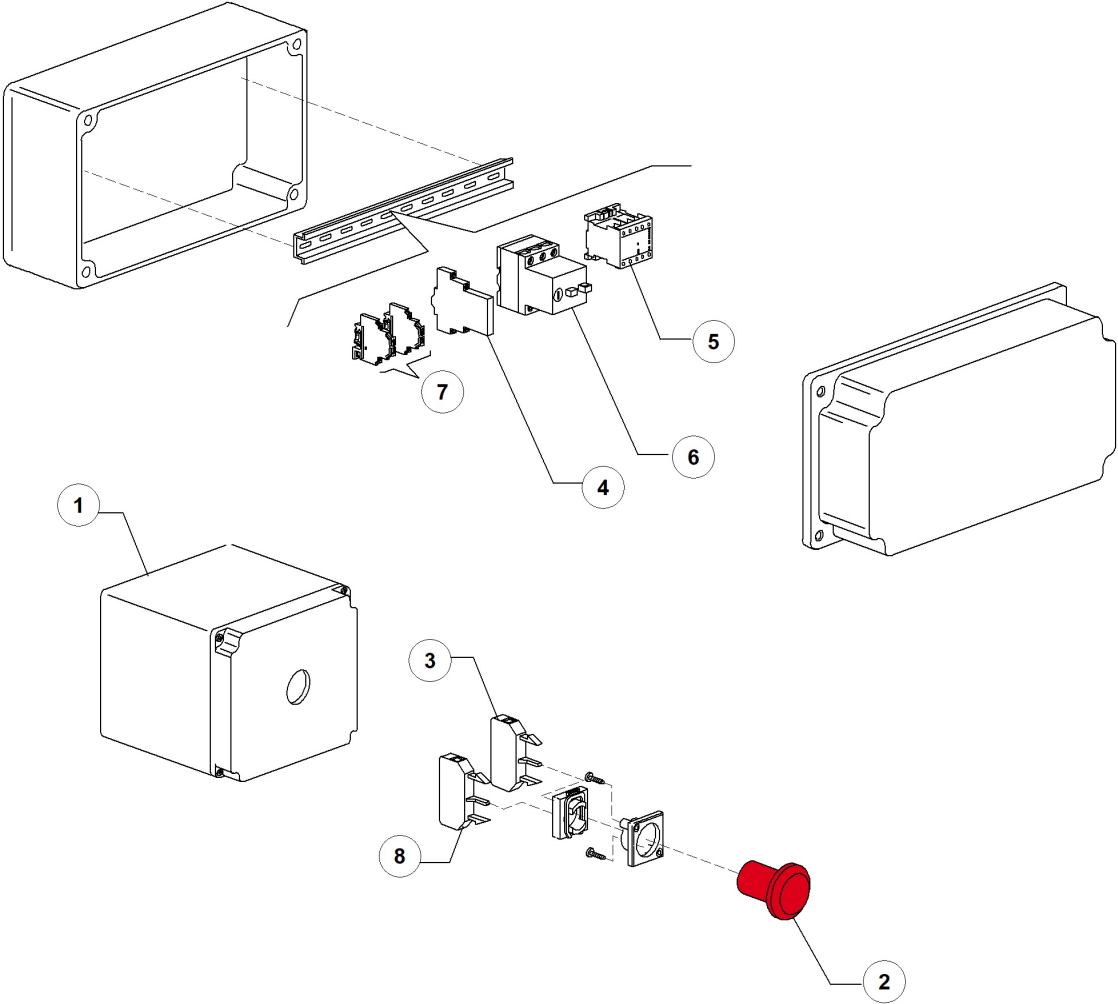
RX 246 SX DR64 HR10 380-400/3N/50 EAC - DWP1005958 - 180° motorized curve - DW220E

Pos.	Code	Descrizione	Description
1	DW3000259	CATENA PER CURVA MOD. 1702 1-11-1	ARC CHAIN
2	DW3003056	ASSIEME GUIDA PER CATENA 180¶∅	KIT GUIDE FOR CHAIN 180¶∅
3	DW3000260	SUPP.FLANGIATO CATENA CURVA SFT20	FLANGE FOR CHAIN
4	DW3000262	RULLO A SBALZO D.50X80 M8X25	50X80 EMBOSMENT ROLLER
5	DW3003048	DISTANZIALE CUSCIN.ALB.C.M.	SPACER FOR BEARINGS
6	DW3003112	REED MICRO PORTA E530	MAGNETIC REED SWITCH
7	DW80232	MAGNETE PER REED PER LP	REED MAGNETIC UNIC
8	DW3009112	PIEG. SUPPORTO MAGNETE PER PORTA	ECONOMIZER MICROSWITCH SUPPORT
9	DW3000261	PIGNONE 8 DENTI D.130.6	8 TEETH PINION D.130.6
10	DW3003051	ALBERO FOLLE PER CATENA C.M.180¶∅	NEUTRAL SHAFT FOR CHAIN
11	DW3003004	BRACCIO SOLLEV. GUIDA CATENA MOT. 180	
13	DW3000252	"PIEDINO INOX 1" PER TUBO 40X40X1"	"S/S 1" FOOT"
14	DW3003047	ALBERO ROTAZ.CATENA C.M.	SHAFT FOR MOTORIZED ARC CHAIN ROTATION
16	DW10200113	PILETTA SCARICO	FLOOR DRAIN
17	DW10200173	GUARNIZIONE 75X58X2	75X58X2 GASKET
18	DW10200114	DADO PILETTA G2 ESA-75	FLOOR DRAIN NUT
19	DW15613/A	"PORTAGOMM.SCARICO 1"1/4X32 DRITTO"	"STRAIGHT HOSE CONNECTOR 1"1/4X32"
22	DW3000270	SPINTORE+SUPP.+PERN.PER CAT.REGINA	PUSHER+SUPPORT+ PIN FOR CHAIN
23	DW3003030	DISTANZIALE PER RULLI Ç?10X1 - L55	ROLLER SPACER D.10X1 L55
24	DW3009312	PIATTO GUIDA CESTO C.M.90¶∅	



RX 246 SX DR64 HR10 380-400/3N/50 EAC - DWP1005958 - 180° motorized curve L=2000 - DW220E

Pos.	Code	Descrizione	Description
1	DW3000259	CATENA PER CURVA MOD. 1702 1-11-1	ARC CHAIN
3	DW3000260	SUPP.FLANGIATO CATENA CURVA SFT20	FLANGE FOR CHAIN
4	DW3000262	RULLO A SBALZO D.50X80 M8X25	50X80 EMBOSMENT ROLLER
5	DW3003048	DISTANZIALE CUSCIN.ALB.C.M.	SPACER FOR BEARINGS
6	DW3003112	REED MICRO PORTA E530	MAGNETIC REED SWITCH
7	DW80232	MAGNETE PER REED PER LP	REED MAGNETIC UNIC
8	DW3009112	PIEG. SUPPORTO MAGNETE PER PORTA	ECONOMIZER MICROSWITCH SUPPORT
9	DW3000261	PIGNONE 8 DENTI D.130.6	8 TEETH PINION D.130.6
10	DW3003051	ALBERO FOLLE PER CATENA C.M.180¶∅	NEUTRAL SHAFT FOR CHAIN
11	DW3003004	BRACCIO SOLLEV. GUIDA CATENA MOT. 180	
13	DW3000252	"PIEDINO INOX 1" PER TUBO 40X40X1"	"S/S 1" FOOT"
16	DW10200113	PILETTA SCARICO	FLOOR DRAIN
17	DW10200173	GUARNIZIONE 75X58X2	75X58X2 GASKET
18	DW10200114	DADO PILETTA G2 ESA-75	FLOOR DRAIN NUT
19	DW15613/A	"PORTAGOMM.SCARICO 1"1/4X32 DRITTO"	"STRAIGHT HOSE CONNECTOR 1"1/4X32"
22	DW3000270	SPINTORE+SUPP.+PERN.PER CAT.REGINA	PUSHER+SUPPORT+ PIN FOR CHAIN
26	DW3060181	CHIAVETTA 5X5X25 INOX	S/S FLAT KEY 5X5X25
30	DW3003030	DISTANZIALE PER RULLI Ç?10X1 - L55	ROLLER SPACER D.10X1 L55
31	DW3009312	PIATTO GUIDA CESTO C.M.90¶∅	



RX 246 SX DR64 HR10 380-400/3N/50 EAC - DWP1005958 - Emergency Button - DW220E

Pos.	Code	Descrizione	Description
1	DW3000264	SCATOLA IP55 PER EMERGENZA CURVA	ARC EMERGENCY BOX IP55
2	DW3002050	PULS.FUNGO D.35 OP.SBLOC.ROT. 30A3	EMERGENCY BUTTON
3	DW3002054	CONTATTO 1NA	CONTACT 1NA
4	DW3006080	CONTATTO AUX. LMS25 11LMH11 1NA+1NC	AUXILIARY CONTACT LMS25 11LMH11 1NA-1NC
5	DW2000370	TELERUTTORE 9A/16A 24V 50/60Hz	CONTACTOR 9A/16A 24V 50/60Hz
6	DW2000393	INT.SALVAMOTORE MAGNETOT.1,6-2,5A	CIRCUIT BREAKER 1,6-2,5A
7	DW3006147	MORSETTO PORTAFUSIBILI 5x20 (5x25)	FUSE CARRIER
8	DW3002056	CONTATTO 1NC RET. 31A5	CONTACT 1NC

