

**cod.DW117E**

data:04/09/2023

**Catalogo ricambi  
Spare parts catalog  
Catalogue de pièces détachées  
Ersatzteilkatalog  
Catálogo de repuestos  
Catálogo de peças de reposição  
Каталог запасных частей**

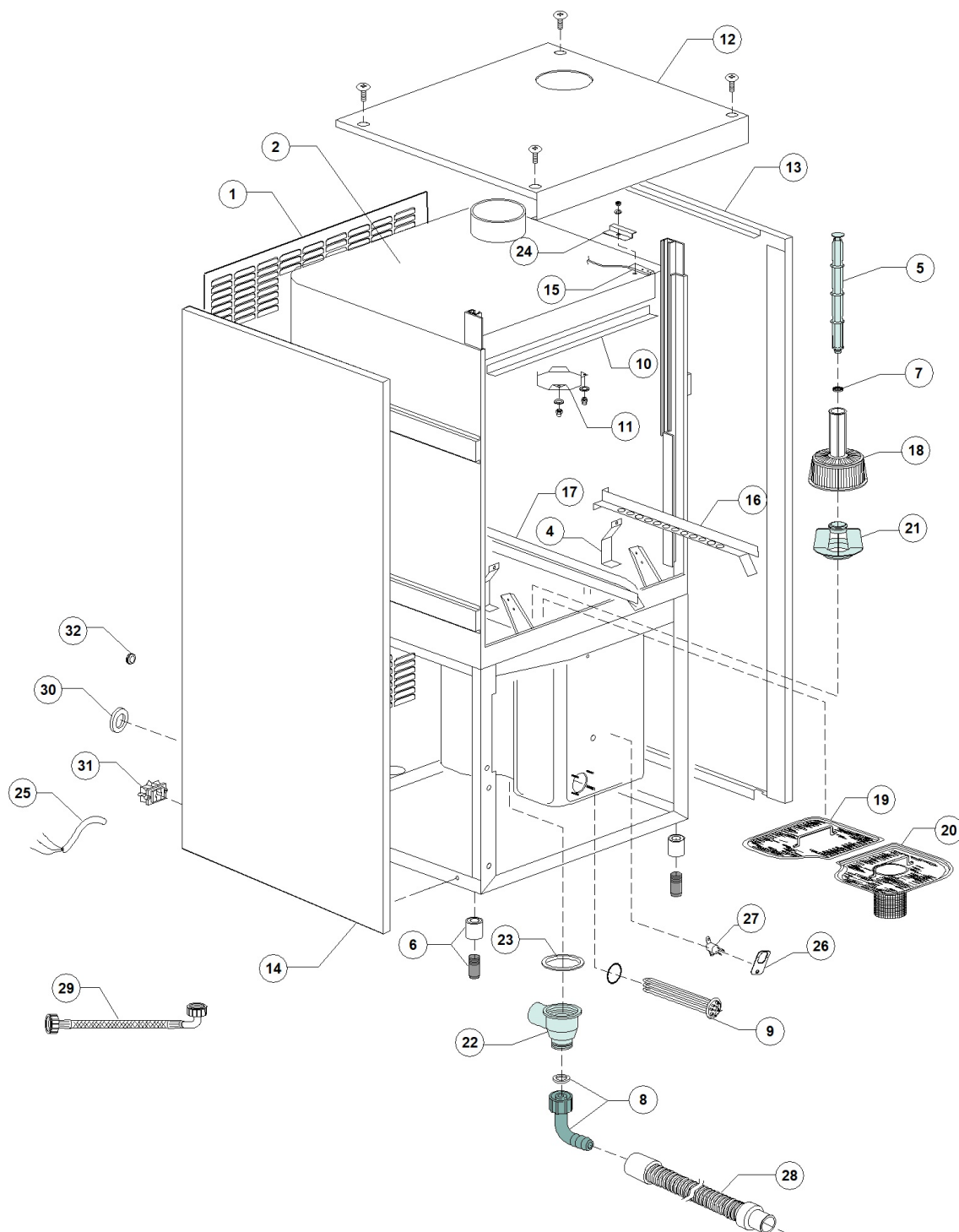
**LP1S8 PLUS DDE XP EAC 380-400/3N/50**



**S/N:DWL1010759**



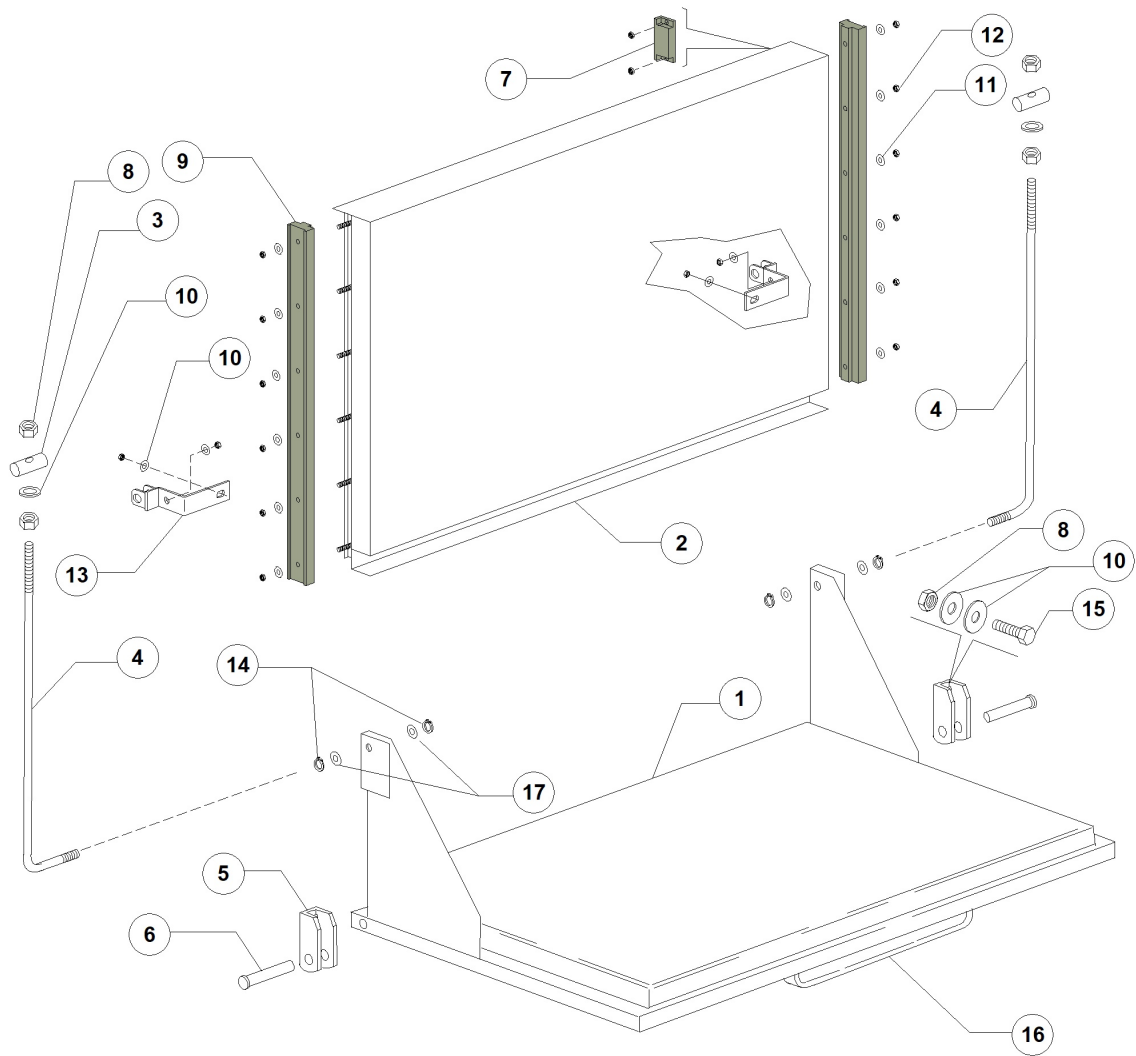
LP1S8 PLUS DDE XP EAC 380-400/3N/50 - DWL1010759 - General body parts - DW117E



**LP1S8 PLUS DDE XP EAC 380-400/3N/50 - DWL1010759 - General body parts - DW117E**

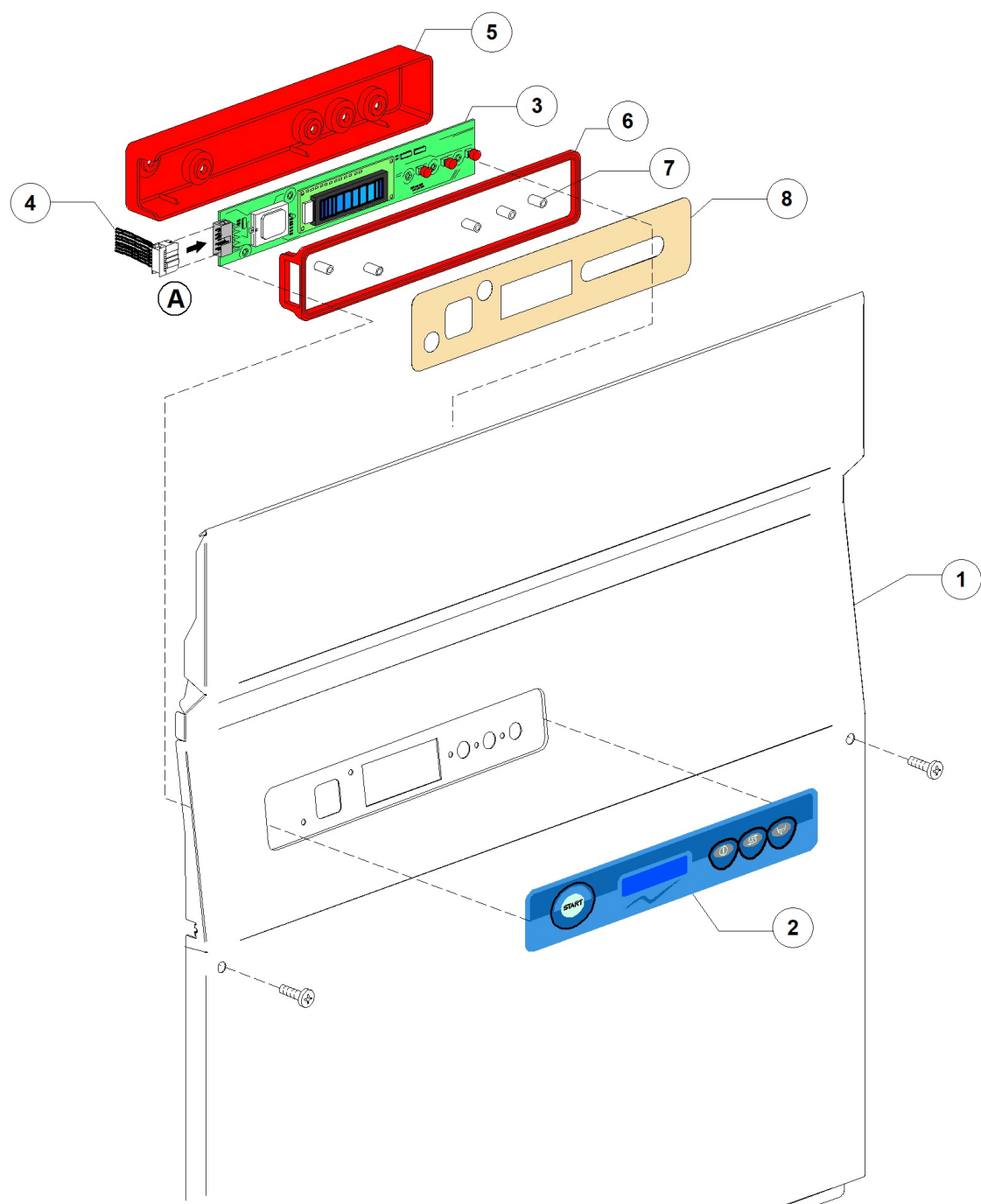
Pos.	Code	Descrizione	Description
1	DW90955	PIEG. SCHIENALE LP1 S8	BACK PANEL
2	DW90950	ASS.CARROZZERIA+PORTE LP1S8	BODYWORK+DOORS P1S8
4	DW22254	PARASP.INF.SX/DX LP1-LP1/800-S-S8	LOWER SPLASH GUARD
5	DW11600102	TROPPO PIENO G12/03	OVERFLOW PIPE G12/03
6	DW15116	"PIEDINO 2" M10 REG. 132-210"	"ADJUSTABLE FOOT M10 132-210 2""
7	DW13021	GUARNIZIONE DEM 40 PER TROPPOPP. GS	OVERLOW PIPE GASKET DEM 40 (MIN. 2 PCS)
8	DW15613	"GOMITO NYLON SCARICO 1"1/4X32"	"DRAIN ELBOW 1" 1/4X32"
9	DW15046	RESIST.3000/3270W 230/240V 3	3000/3270W 230/240V 3 HEATING ELEM.
10	DW90914	PARASPRUZZI SUP.SU CARROZ.LP1 S-S8	UPPER SPLASH GUARD
11	DW90935	PARASPRUZZI SUP CAMINO INT LP1S8/LP1S	INTERNAL CHIMNEY UPPER SPLASH GUARD
12	DW90907	PIEG. COPERCHIO LP1 S-S8	COVER LP1S/LP1S8
13	DW90953	PIEG. FIANCO LATERALE DX LP1 S8	RIGHT SIDE PANEL
14	DW90954	PIEG. FIANCO LATERALE SX LP1 S8	LEFT SIDE PANEL
15	DW3003112	REED MICRO PORTA E530	MAGNETIC REED SWITCH
16	DW90910	CORRENTINO DX LP1 S-S8	RIGHT INTERNAL SLIDE
17	DW90911	CORRENTINO SX LP1 S-S8	LEFT INTERNAL SLIDE
18	DW500599	FILTRO ASPIR. CON PROLUNGA	SUCTION FILTER
19	DW90913	FILTRO SUPERFICIE POST.LP1 S-S8	BACK SURFACE FILTER
20	DW90912	FILTRO SUPERF.ANT.CON POZ.LP1 S-S8	FRONT SURFACE FILTER
21	DW500615	GHIERA CON INNESTO FILTRO MOD.50	FERRULE FOR FILTER CLUTCH
22	DW500603	POZZETTO SCARICO CON FILETTO	SCRAP TRAY
23	DW80208	GUARNIZIONE RAMPA LP2 DIAM.95X75X3	RISER GASKET D.95X75X3 (MIN. 2 PCS)
24	DW3009112	PIEG. SUPPORTO MAGNETE PER PORTA	ECONOMIZER MICROSWITCH SUPPORT
25	DW80200	CAVO ALIMENTAZIONE 5X4X3400	CABLE 5X4X3400
28	DW10200112	CANNA SCARICO DIAM.32 GROSSA	DRAIN HOSE D.32
29	DW10726	CANNA CARICO PICC. WRAS m1,5x3/4 EN61770	LOAD PIPE WRAS M1,5x3/4 EN61770
30	DW13324	PASSACAVO GOMMA D.46X50	RUBBER FAIRLEAD D.46X50
31	DW15065/A	FISSACAVO PER VITI AUTOF (NR.2x11007)	CABLE-FASTENER WITH SCREW
32	DW13323	PASSACAVO IN GOMMA D.13	RUBBER FAIRLEAD D.13 (MIN. 2 PCS)

LP1S8 PLUS DDE XP EAC 380-400/3N/50 - DWL1010759 - Door - DW117E



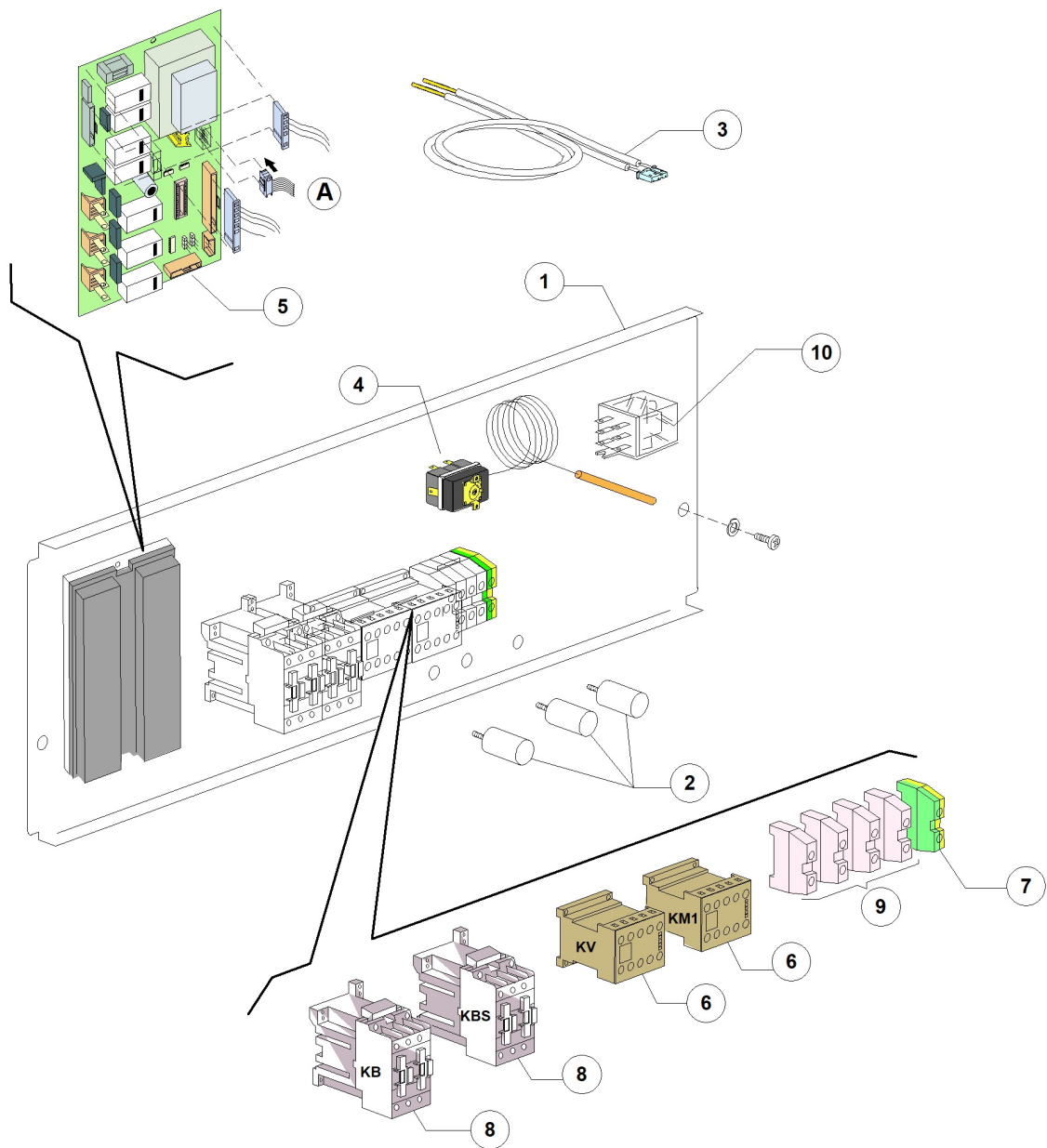
**LP1S8 PLUS DDE XP EAC 380-400/3N/50 - DWL1010759 - Door - DW117E**

Pos.	Code	Descrizione	Description
1	DW90952	#PORTA INFERIORE COMPLETA LP1 S8	DOOR WITHOUT HANDLE
2	DW90951	#PORTA SUPERIORE COMPLETA LP1 S8	UPPER DOOR
3	DW22219	CILINDRETTO PER PORTA LP	SMALL DOOR CYLINDERS
4	DW23220	ASTA PORTA INOX LP1/800/LP1S8/P4S8	DOOR ROD
5	DW22206/B	SQUADRA PORTA LP SP.20/10	DOOR HINGE
6	DW22220/A	PERNO INOX PER CERNIERA PORTA LP	DOOR HINGE S/S STUD
7	DW80232	MAGNETE PER REED PER LP	REED MAGNETIC UNIC
8	DW11721	DADO M6 AUTOBL.INOX UNI 7473 DIN982	S/S SELF-LOCKING NUT M6 DIN982 (MIN. 10
9	DW90025	PATTINI SCORRIM.PORTA SUP. LP 1S8	DOOR SLIDING GUIDE
10	DW11177	RONDELLA 6X12 INOX PIANA UNI6592 DIN125	6X12 S/S PLAIN WASHER UNI6592 DIN125
11	DW11176	RONDELLA 5X10 PIANA INOX UNI6592 DIN125	5X10 S/S PLAIN WASHER UNI6592 DIN125
12	DW11169	DADO M5 AUTOBLOCCANTE INOX DIN 982	S/S SELF-LOCKING NUT M5 DIN982
13	DW90916	#STAFFA MOV.PORTA SUP.DX/SX LP1 S-S8	DOOR MOVEMENT SUPPORT
14	DW11815	SEEGER DIAM.8 INOX UNI7435	SNAP RING D.8 S/S
15	DW11104/B	VITE INOX M6x16 TE DIN 933	M6X16 TE S/S SCREW DIN933
16	DW22260	MANIGLIA INOX IN ELLITTICO 40x20 INT.340	ELLIPTIC S/S HANDLE
17	DW11185	RONDELLA 8X16 PIANA INOX DIN125	8X16 S/S PLANE WASHER DIN125



**LP1S8 PLUS DDE XP EAC 380-400/3N/50 - DWL1010759 - Control panel and switches - DW117E**

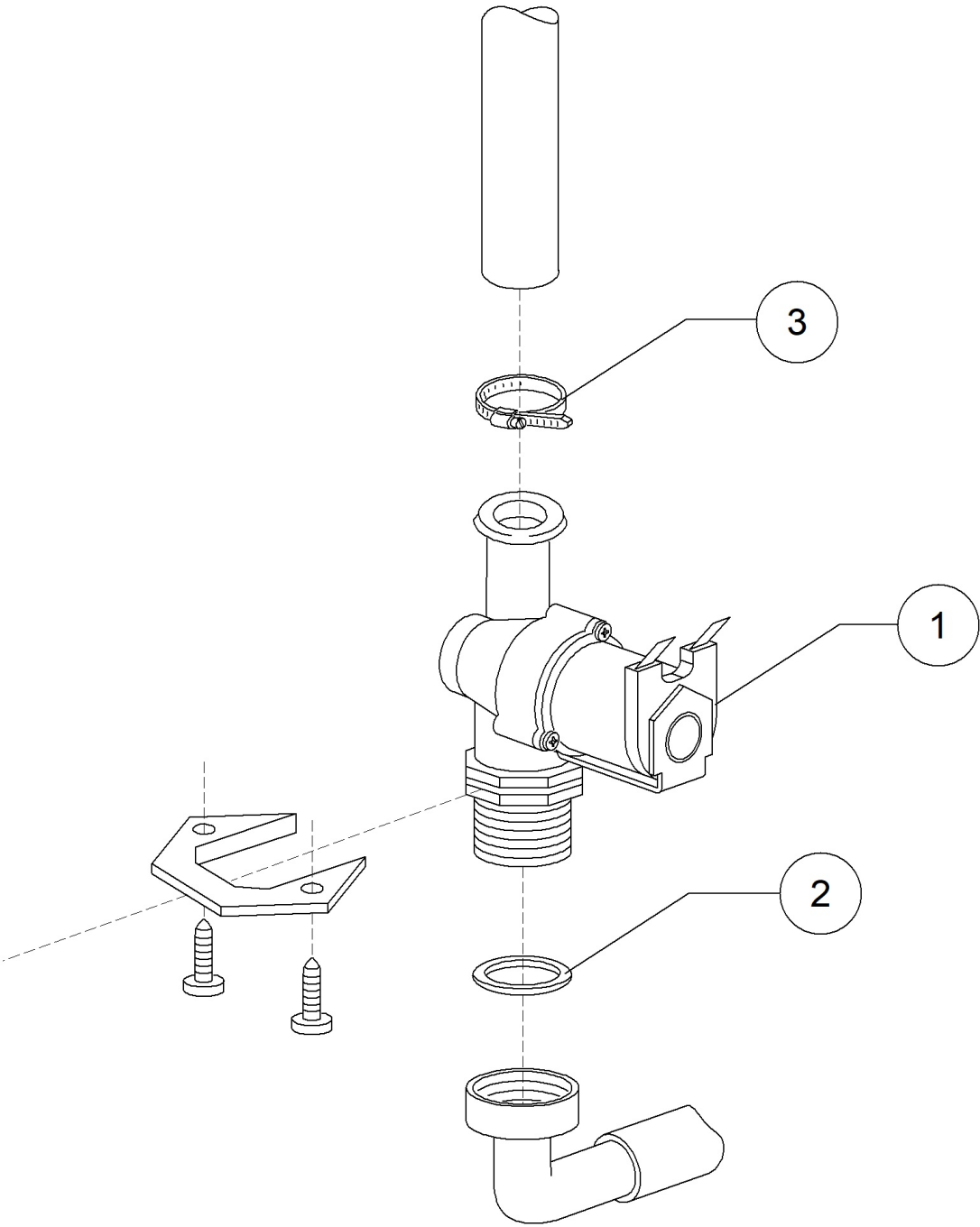
Pos.	Code	Descrizione	Description
1	DW90923/A	#PANN.COM. LP1S8 ELETTR. 2009 DIHR grand	
2	DW560048	#MOSTRINA TOP DIHR	CONTROL OVERLAY DIHR
3	DW560051	#TASTIERA CON DISPLAY 122X32 VERS.09	KEY-BOARD WITH DISPLAY 122X32 VERS.09
4	DW50651	"PIATTINA MULTIFILO "F16p" L1000"	RIBBON CABLE F16p L1000
5	DW560051/A	#SCATOLA PROT. SCHEDA 560051 (245X46X19)	ELECTRONIC BOARD PROTECTION BOX 560051
6	DW560051/B	#GUARNIZIONE PER SCATOLA 560051/A	PROTECTION BOX GASKET DW560051/A
7	DW50561	DIST. SCHEDE ELETTR. 2009 D.8X10	MAINBOARD SPACER D.8X10
8	DW560053	#PROTEZ. ISOLANTE ADES. PULSAN. TOP	PUSH BUTTON PANEL INSULATING PROTECTION





**LP1S8 PLUS DDE XP EAC 380-400/3N/50 - DWL1010759 - Electric control components - DW117E**

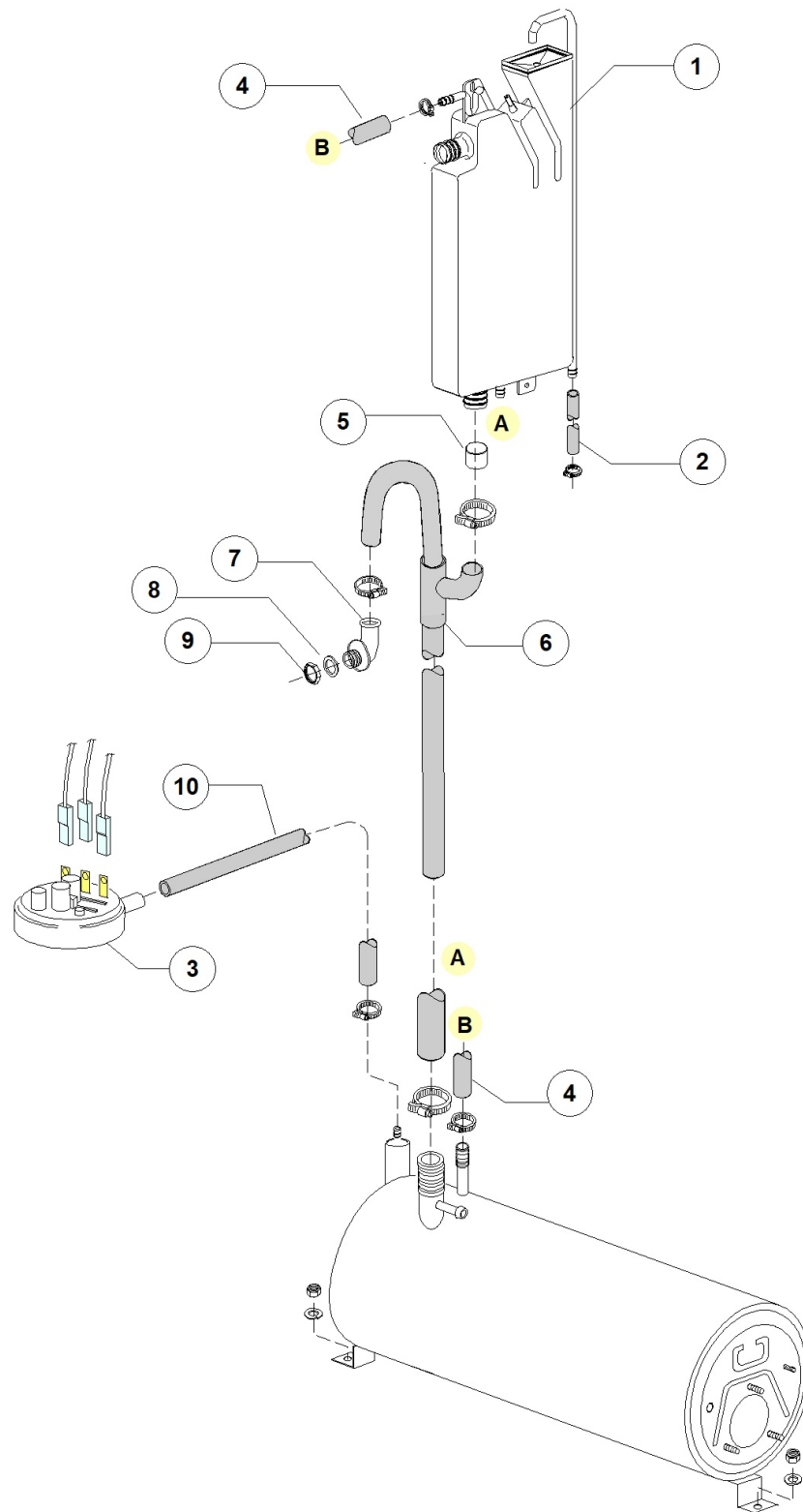
Pos.	Code	Descrizione	Description
1	DW23214	#PORTACOMPONENTI ELETTR. LP1/800-LP1S8	ELECTRIC COMPONENTS PANEL
2	DW15149	FILTRO ANTIDIS.F3 (CX0.47MF)	LOW NOISE FILTER F3 (CX0.47MF)
3	DW50562	SONDA TERMOSTATO SCHEDA DIHRECO2	THERMOSTAT PROBE DIHRECO2
4	DW2000430	TERMOSTATO DI SICUR. 110 1500PVC	SAFETY THERMOSTAT 110 1500PVC
5	DW90924	SCHEDA LP1S8 PLUS 2011 (BL)	
6	DW15086	TELERUTTORE 230V 50/60Hz 4C AC3(6A)	CONTACTOR 230V 50/60Hz 4C AC3(6A)
7	DW10300401	MORSETTO 6/8mmq GIALLO VERDE	TERMINAL 6/8mmq YELLOW/GREEN
8	DW10300050	TELERUTT. 25A/12A 4NA 230V 50-60HZ	CONTACTOR 25A/12A 4NA 230V 50-60HZ
9	DW10300403	MORSETTO 6mmq	TERMINAL 6mmq



**LP1S8 PLUS DDE XP EAC 380-400/3N/50 - DWL1010759 - Solenoid valve group - DW117E**

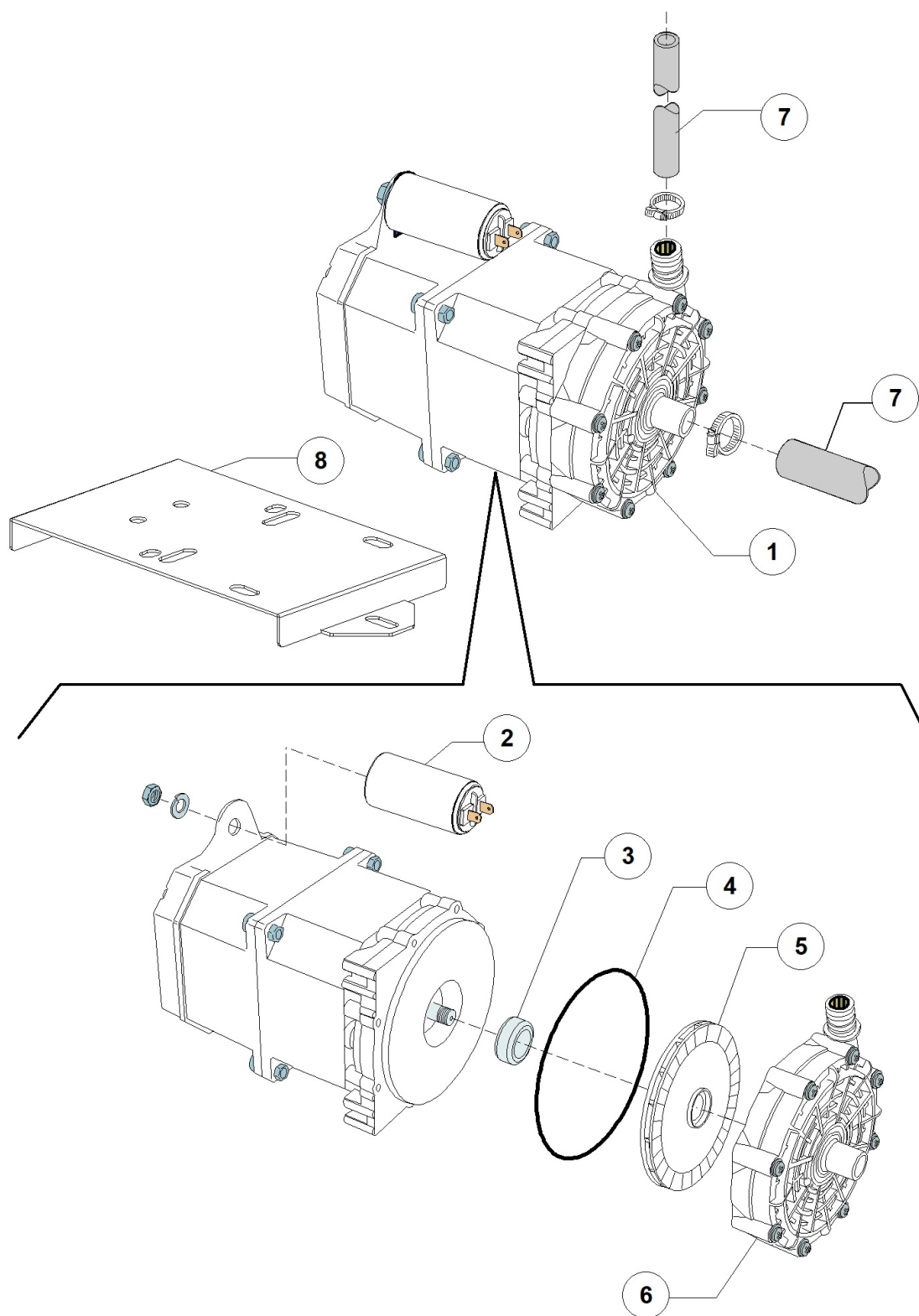
Pos.	Code	Descrizione	Description
1	DW10703	ELETTROV. SING. H2O 230V DIS.LS036	SINGLE SOLENOID VALVE H2O 230V
2	DW13307	GUARNIZ. 3/4 CARICO H2O DIS.LS061	GUARNIZ. 3/4 CARICO H2O DIS.LS061
3	DW11807	FASCETTE AISI 430 12/22	CLAMP 12/22 AISI 430

LP1S8 PLUS DDE XP EAC 380-400/3N/50 - DWL1010759 - Break Tank - DW117E



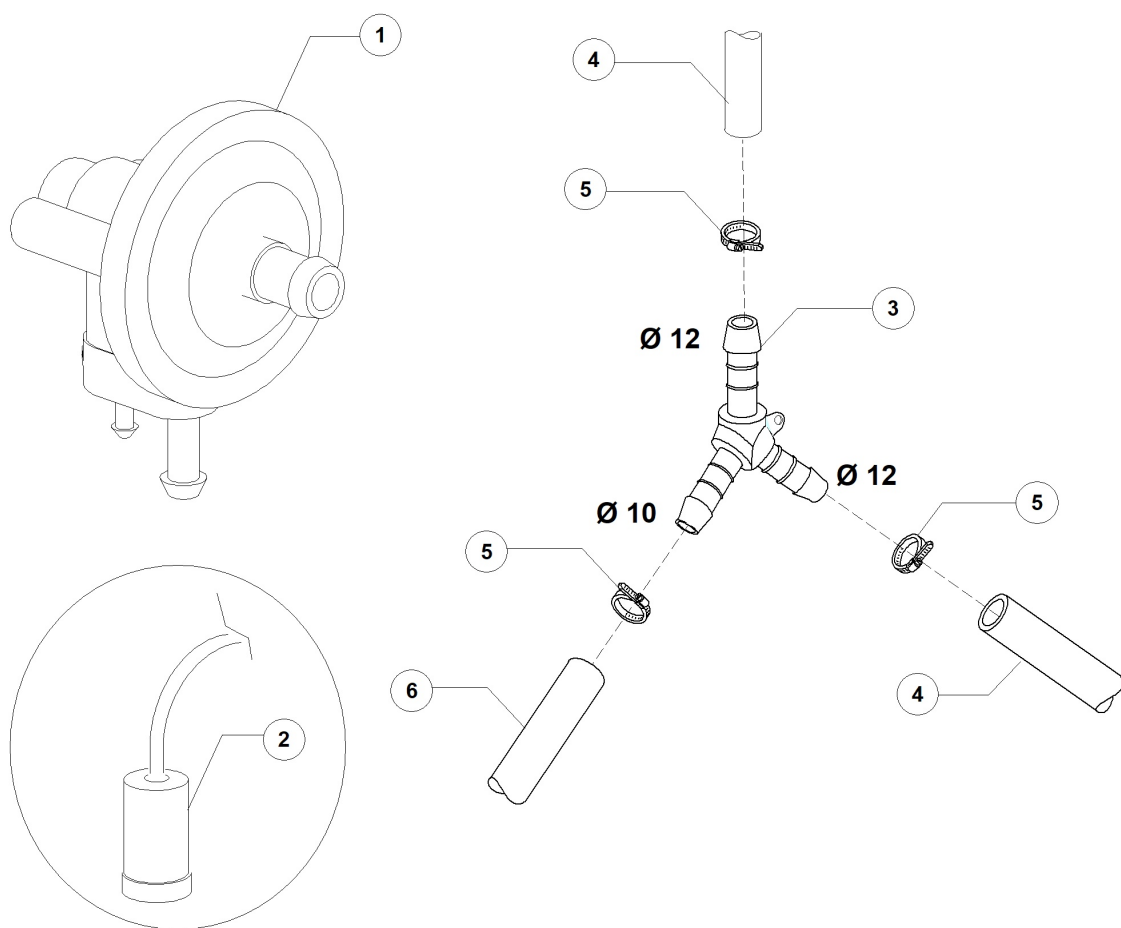
**LP1S8 PLUS DDE XP EAC 380-400/3N/50 - DWL1010759 - Break Tank - DW117E**

Pos.	Code	Descrizione	Description
1	DW15720	ASSIEME BREAK TANK 3.5	BREAK TANK ASSEMBLY 3.5LT
2	DW2907352	TUBO GOMMA PVC WRAS BT	PVC WRAS RUBBER HOSE
3	DW10706/A	"PRESSOSTATO "EL." 46-26"	PRESSURE SWITCH 46-26
4	DW2907351	TUBO GOMMA EPDM 11,5X19	11,5X19 EPDM RUBBER HOSE
5	DW12533	RINFORZO COLLARE USCITA BREAK TANK	BREAK TANK OUTLET COLLAR REINFORCEMENT
6	DW91112	MAN.CARICO/SICUREZZA P2S-P3S-P4S8	LOADING/SAFETY PIPES ASSEMBLY
7	DW10701	GOMITO SCARICO DIS.LS035	DRAIN ELBOW
8	DW13305	GUARN.GOM.SCARICO 44x32x3 DIS.LS061	O RING FOR DRAIN ELBOW 44x32x3 DIS.LS061
9	DW11701/A	DADO INOX PER PIL. SCAR.	S/S NUT
10	DW14508	TUBO EPDM 4.5X9 PER PRESSOSTATO	EPDM HOSE 4.5X9 FOR PRESSURE SWITCH



**LP1S8 PLUS DDE XP EAC 380-400/3N/50 - DWL1010759 - Rinsing pump / Booster pump - DW117E**

Pos.	Code	Descrizione	Description
1	DW15100/DO	POMPA RISCIAQUO 220-240/50 (PLUS)	RINSE PUMP 220-240V/50HZ (PLUS)
2	DW16043	#CONDENSATORE POMPA uf8	uf8 CONDENSER
3	DW15100/S	TENUTE ROTANTI EPDM(15100/DO)	EPDM ROTARY SEAL (15100/DO)
4	DW15100/T	OR EPDM(15100/DO)	O-RING EPDM (15100/DO)
5	DW15100/U	#GIRANTE 90X2.5 (15100/DO)	PUMP ROTOR 90X2.5 (DW15100/DO)
6	DW15100/V	#CHIOCCIOLA ANTE. (15100/DO)	SCROLL FOR PUMP 15100/DO
7	DW2907351	TUBO GOMMA EPDM 11,5X19	11,5X19 EPDM RUBBER HOSE
8	DW23235	STAFFA SUPP. POMPA A.P.	BOOSTER PUMP SUPPORT

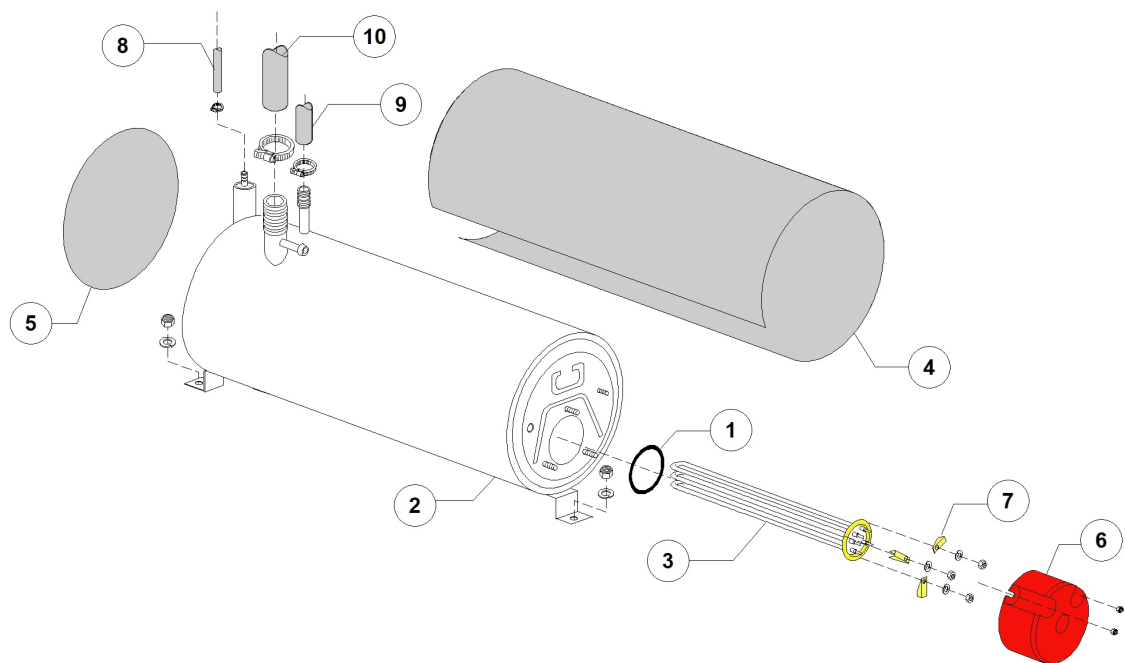




**LP1S8 PLUS DDE XP EAC 380-400/3N/50 - DWL1010759 - Rinse aid dispenser group - DW117E**

Pos.	Code	Descrizione	Description
1	DW10799/G	DOSATORE BRILLANTANTE	RINSE AID DOSING PUMP
2	DW15058	FILTRINO CON PESO ASPIR. DET/BRIL	SMALL FILTER (MIN. 3 PCS)
3	DW540105	DERIV. 3VIE Y D.10-12-12 (DOSATORE)	Y-PIECE D.10-12-12
4	DW2907351	TUBO GOMMA EPDM 11,5X19	11,5X19 EPDM RUBBER HOSE
5	DW11807	FASCETTE AISI 430 12/22	CLAMP 12/22 AISI 430

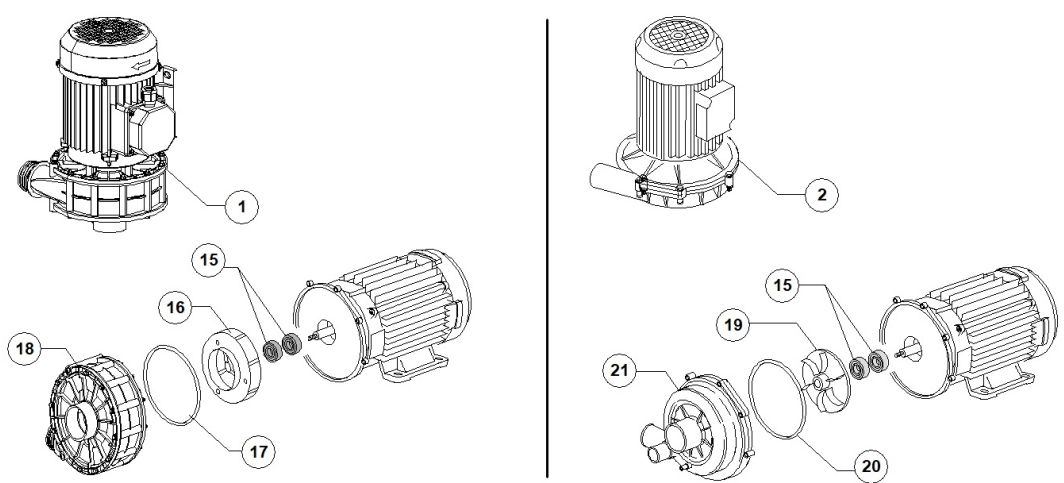
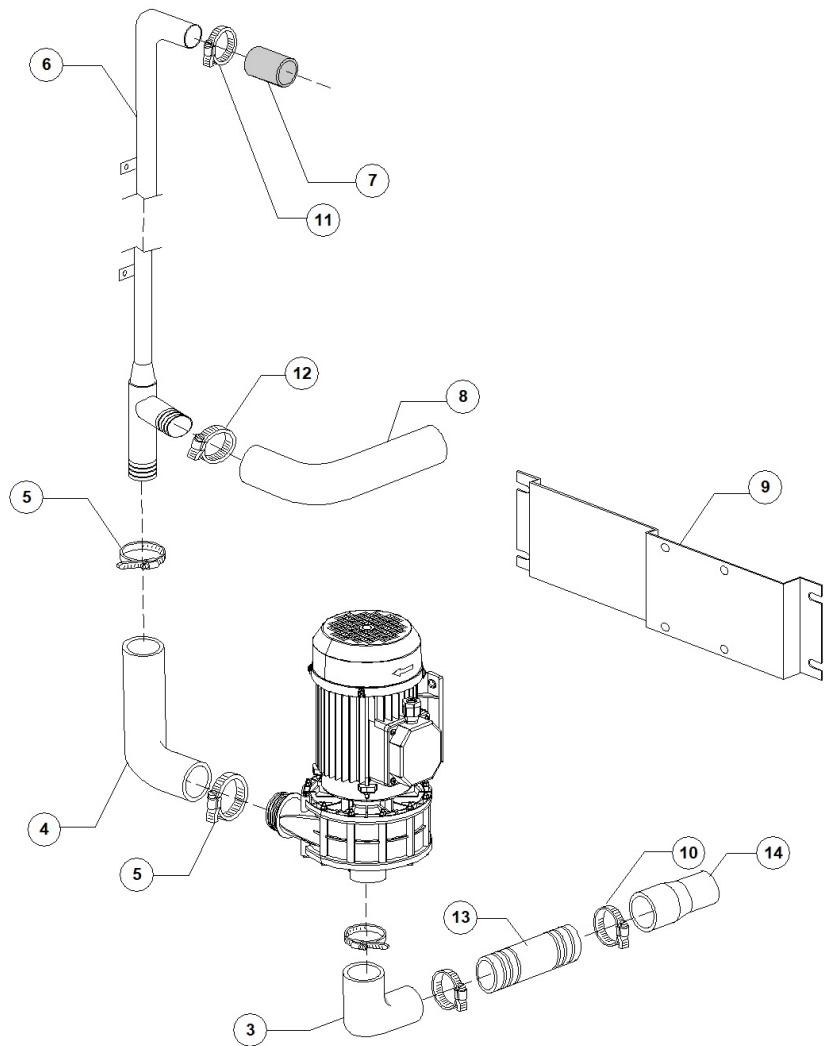
LP1S8 PLUS DDE XP EAC 380-400/3N/50 - DWL1010759 - Boiler group - DW117E



**LP1S8 PLUS DDE XP EAC 380-400/3N/50 - DWL1010759 - Boiler group - DW117E**

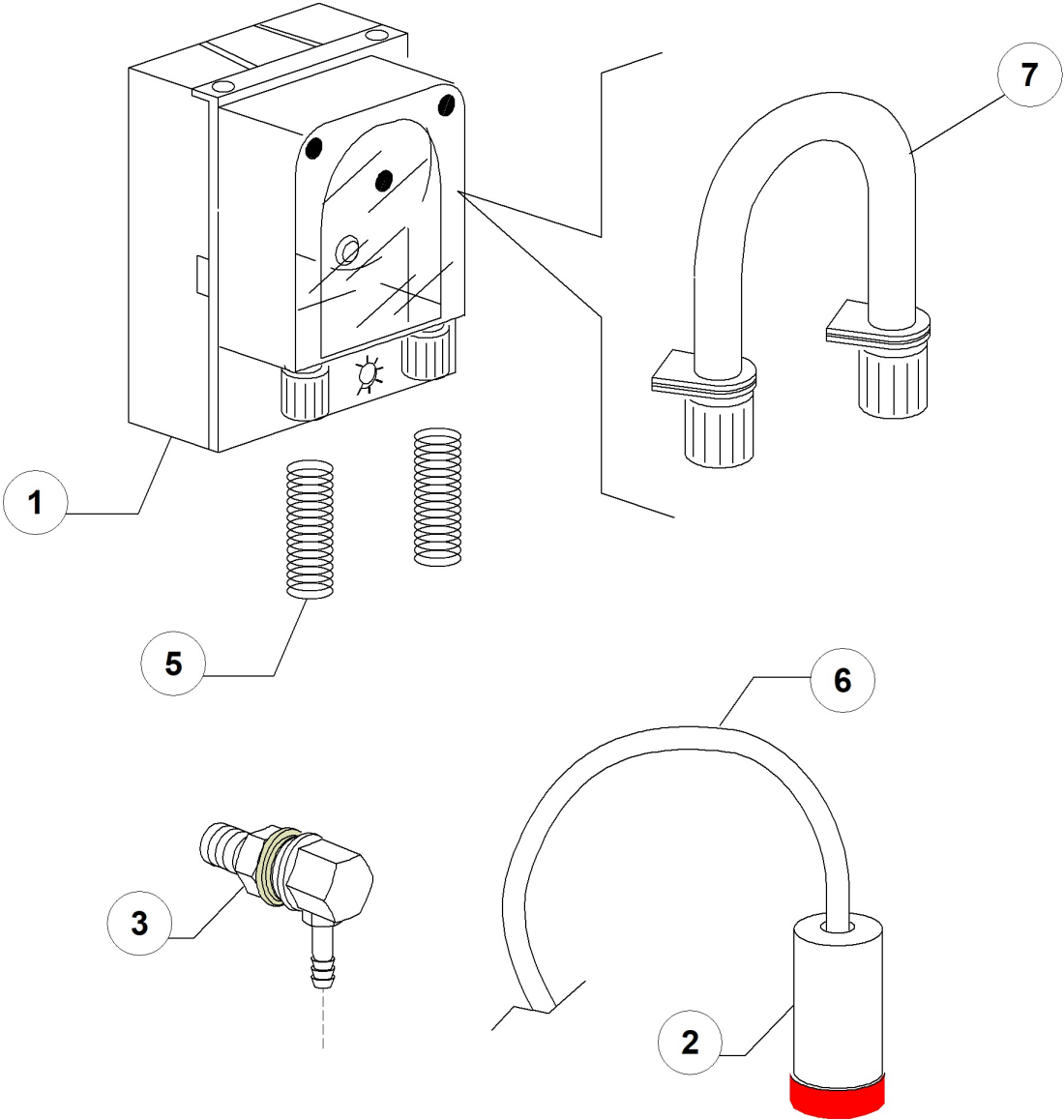
Pos.	Code	Descrizione	Description
1	DW13015	GUARNIZIONE 6225 OR 160 NBR	6225 O-RING 160 NBR
2	DW11600104	BOILER ATMOSFERICO D190x490 BA(AISI 304)	ATMOSPHERIC BOILER D190x490 BA(AISI 304)
3	DW30001011	RESIST.9000/9800W 230/240V 3	9000/9800W 230/240V 3 HEATING ELEM.
4	DW11600110	COIBENTE PER BOILER ATM D190	BOILER INSULATING ATM D190
4	DW30002030	COIBENTAZIONE BOILER D.155X500	BOILER INSULATING D.155X500
5	DW91115	DISCO IN ESPANSOLENE AUTOESTING.D.190X3	INSULATING DISK D.190
6	DW75311	CUFFIOTTO PER RESISTENZA 26/03/97	HEATING ELEMENT COVER
7	DW16045	STAFFE FISSAGGIO RESIST.FORO 6.3	HEATING ELEMENT MOUNTING BRACKET D.6,3
8	DW14508	TUBO EPDM 4.5X9 PER PRESSOSTATO	EPDM HOSE 4.5X9 FOR PRESSURE SWITCH
9	DW2907351	TUBO GOMMA EPDM 11,5X19	11,5X19 EPDM RUBBER HOSE
10	DW91112	MAN.CARICO/SICUREZZA P2S-P3S-P4S8	LOADING/SAFETY PIPES ASSEMBLY

LP1S8 PLUS DDE XP EAC 380-400/3N/50 - DWL1010759 - Wash pump group - DW117E



**LP1S8 PLUS DDE XP EAC 380-400/3N/50 - DWL1010759 - Wash pump group - DW117E**

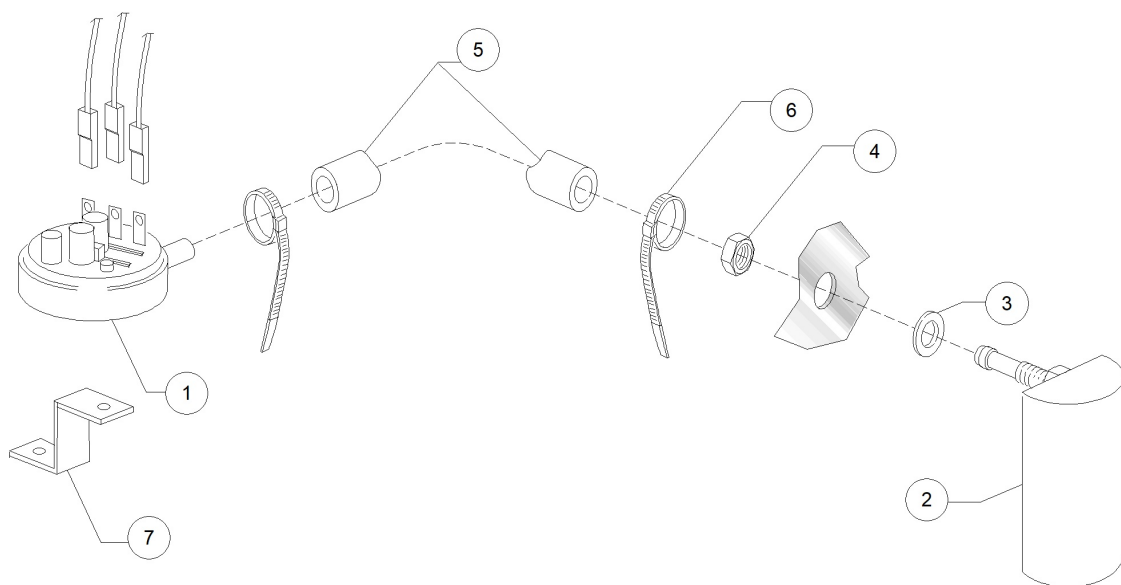
Pos.	Code	Descrizione	Description
1	DW88106	POMPA HP2.7 220/380-400 50HZ (1205)	PUMP HP2.7 220/380-400V/50HZ
2	DW88106	POMPA HP2.7 220/380-400 50HZ (1205)	PUMP HP2.7 220/380-400V/50HZ
3	DW3002020	EPDM D.60 MANICOTTO A GOMITO EPDM D.60	ELBOW PIPE COUPLING D.60
4	DW15032/B	MANICOTTO MANDATA 50/50 RINFORZ.	DELIVERY PIPE COUPLING 50/50
5	DW11824	FASCETTA AISI 430 50-70	CLAMP 50/70 AISI 430
6	DW90002	RAMPA LAVAGGIO NUOVA LP1 S8	WASH RISER P1S8
7	DW90030	TUBO RADIO 45X55X280	45X55X280 HOSE
8	DW90035	MANICOTTO MAND. INF. LP1/S8	LOWER DELIVERY PIPE
9	DW90917	STAFFA SUPPORTO POMPA 2,7HP LP1S-S8	PUMP SUPPORT 2,7HP LP1S-S8
10	DW2902491	FASCETTA AISI-430 60/80	CLAMP 60/80 AISI 430
11	DW11806	FASCETTE AISI 430 25/40	CLAMP 25/40 AISI 430
12	DW11810	FASCETTE AISI 430 40/60	CLAMP 40/60 AISI 430
13	DW90036	COLLETTORE D.60X210 CON CANALINI	MANIFOLD WITH GRIDS D.60X120
14	DW90037	MANICOTTO ASPIR. LP1S8 60/57	SUCTION SLEEVE LP1S8 60/57
15	DW15080	PREMISTOPA+CONTROFACCIA	ROTATING SEALS
16	DW88222/O	#GIRANTE POMPA HP2.7 (88106) OLYMPIA	PUMP ROTOR
17	DW10200290/O	#GUARN.OR POMPA MEC80.T200SX(OLYMPIA)	GUARN.OR POMPA MEC80.T200SX(OLYMPIA)
18	DW88220/O	#KIT CHIOCCIOLA POMPA 2.7HP(88106)OLYMPI	
19	DW88222	#GIRANTE POMPA HP2.7 F1205 (88106)	PUMP ROTOR
20	DW10200290	#GUARNIZIONE OR POMPA 1225	OR 1225 GASKET
21	DW88220	#CHIOCCIOLA POMPA 1205 2.7HP	



**LP1S8 PLUS DDE XP EAC 380-400/3N/50 - DWL1010759 - Dosing detergent group - DW117E**

Pos.	Code	Descrizione	Description
1	DW15985	DOS.ELETT.DET REGOLABILE 0-3LT/H	DETERGENT DOSING PUMP 0-3L/H
2	DW15058	FILTRINO CON PESO ASPIR. DET/BRIL	SMALL FILTER (MIN. 3 PCS)
3	DW15123	INIETTORE DETER. A GOMITO INOX	S/S DOSING PUMP INJECTOR
5	DW10763	MOLLA D.05 INOX PER TUB. D.6x4 PVC	PIPE S/S SPRING
6	DW14503	TUBO PVC DIAM.6x4 TRASPARENTE	D.6X4 PVC TRANSPARENT HOSE
7	DW15108/E	TUBO TERMOPLASTICO DDE GERMAC	GERMAC DISPENSER THERMOPLASTIC HOSE
7	DW15185	TUBO MEMBRANA DDE SEKO DET.	SEKO DISPENSER THERMOPLASTIC HOSE
7	DW15297	TUBO MEMBRANA DDE SEKO 04/2013	SEKO DISPENSER THERMOPLASTIC HOSE
7	DW15297/T	TUBO TERMOPLASTICO DDE TECNOPRO	TECNOPRO DISPENSER THERMOPLASTIC HOSE
7	DW15985/A	#TUBO TERMOPLASTICO DDE MICRODOS	MICRODOS THERMOPLASTIC PIPE

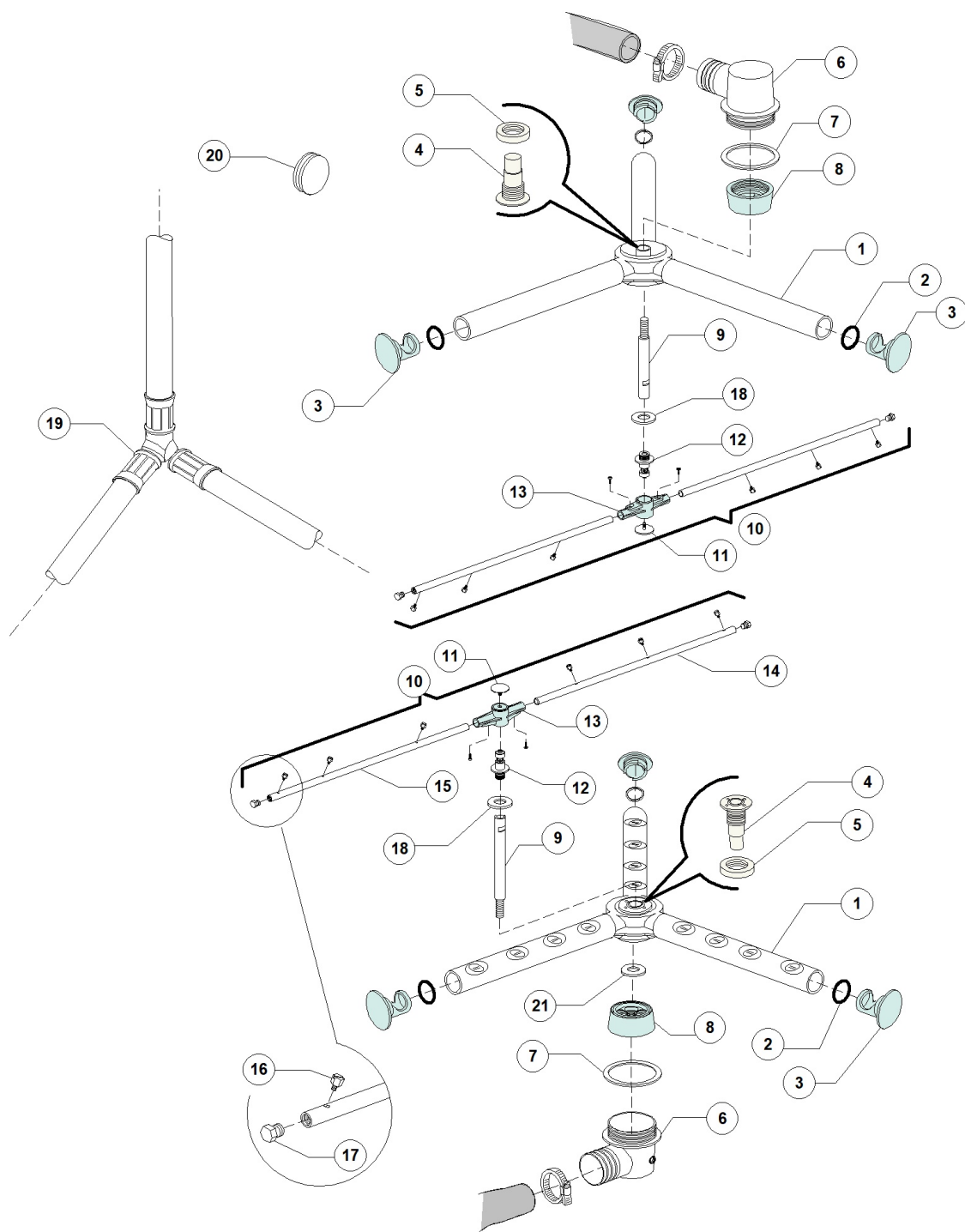
**LP1S8 PLUS DDE XP EAC 380-400/3N/50 - DWL1010759 - Pressure switch group - DW117E**





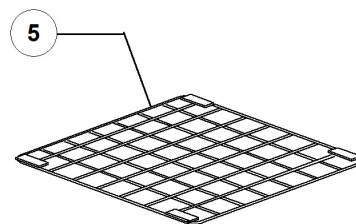
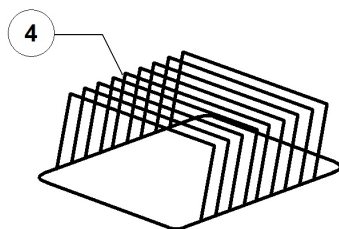
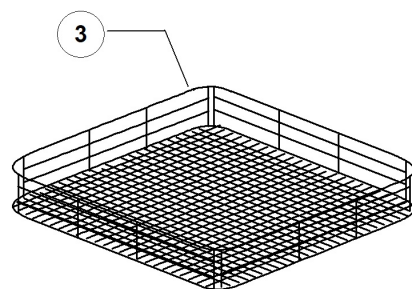
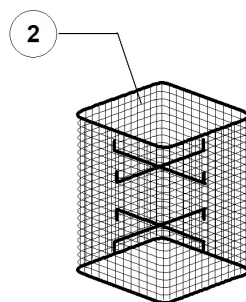
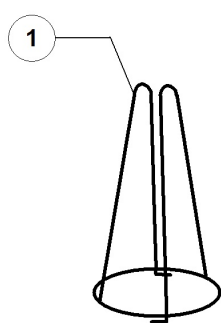
**LP1S8 PLUS DDE XP EAC 380-400/3N/50 - DWL1010759 - Pressure switch group - DW117E**

Pos.	Code	Descrizione	Description
1	DW90023	PRESSOSTATO LP1 S-S8 190-60	PRESSURE SWITCH 190-60 UL
2	DW135911/B	ASSIEME GABBIA D'ARIA GRIGIA L75	GREY AIR TRAP ASSEMBLY L75
3	DW13301	GUARNIZ. IN FASIT 202 D14x8x1,5	O-RING ROLMART D14X8X1,5
4	DW11702	DADO M8 INOX UNI5588 DIN934	S/S NUT M8 DIN934 (MIN. 20 PCS)
5	DW14508	TUBO EPDM 4.5X9 PER PRESSOSTATO	EPDM HOSE 4.5X9 FOR PRESSURE SWITCH
6	DW10738	FASCETTA PLASTICA 98X2.5	PLASTIC CLAMP 98X2,5
7	DW3009363	SUPPORTO PRESSOSTATO	PRESSURE-SWITCH SUPPORT



**LP1S8 PLUS DDE XP EAC 380-400/3N/50 - DWL1010759 - Turret group with rotating arms - DW117E**

Pos.	Code	Descrizione	Description
1	DW90004	GIRANTE LAV.COMPL. SUP/INF LP1 S-S8	UPPER/LOWER WASH ROTOR
2	DW13023	GUARNIZ. OR 131 (4093)	O-RING 131 (4093) GASKET
3	DW3003029	TAPPO X LANCIA LAVAGG.D32 28/03/97	PLASTIC PLUG FOR WASH ARM
4	DW75316	MOZZO PER GIRANTE 11S/96	HUB FOR ROTOR 11S/96
5	DW75317	DADO PER MOZZO GIR. 11S/96	NUT FOR ROTOR HUB 11S/96
6	DW90008	TORRET.INF/SUP.PER GIRELLO LP1 S-S8	WASH ARMS'LOWER / UPPER SUPPORT P1S/S8
7	DW80208	GUARNIZIONE RAMPA LP2 DIAM.95X75X3	RISER GASKET D.95X75X3 (MIN. 2 PCS)
8	DW90009	MOZZO FISSAGGIO TORRETTA LP1 S-S8	HUB FOR ROTOR
9	DW90010	PROLUNGA ASSE RIS.INF/SUP LP1 S-S8	UPPER/LOWER RINSE AXLE EXTENSION P1S/S8
10	DW90003	GRUPPO RISC.SUP/INF LP1S8 - LP1/800	UPPER/LOWER RINSE ASSEMBLY P1S8/P1800
11	DW10652	VITE RISCIAQUO/03	RINSE ARM SCREW
12	DW10651	ASSE RISCIAQUO/03	RINSE AXLE 03
13	DW10650	MOZZO PER GIRANTE RISCIAQUO/03	HUB FOR RINSE ROTOR 03
14	DW10659	TUBO RISC. DX LP UGELLI INOX/03	RIGHT RINSE ARM S/S NOZZLES LP/03
15	DW10660	TUBO RISC. SX LP UGELLI INOX/03	LEFT RINSE ARM S/S NOZZLES LP/03
16	DW560018	UGELLO INOX RISCIAQUO M5	S/S RINSE NOZZLE M5
17	DW560017	TAPPO PER TUBO RISCIAQUO M9x1	RINSE ARM PLUG
18	DW90031	RONDELLA X SCORRIM.GIR.R.LP 1 S-S8	SLIDING WASHER P1S/P1S8
19	DW91110	ASS.TUBI RISC.D.12 P2S-P3S-P4S8	RINSE PIPE ASSEMBLY D.12
20	DW13316/A	GUARNIZIONE CIECA PER FORO DVGW	DVGW HOLE PLUG
21	DW11600033	ANELLO RIDUZIONE FLUSSO G 12 S	REDUCTION FLOW RING



**LP1S8 PLUS DDE XP EAC 380-400/3N/50 - DWL1010759 - Baskets - DW117E**

Pos.	Code	Descrizione	Description
2	DWC86/A	CESTELLO PORTA SPATOLE INOX	S/S SPATULA BASKET
3	DWC87/B	CESTO INOX 550X665X70(RETE 540X655)	550X665 S/S BASKET
4	DWC97/A	INSERTO INOX PER VASSOI 8P.	S/S TRAY SUPPORT 8 PCS
5	DWC100	GRIGLIA INOX 55X55	550X550 S/S GRID

