

cod.DW123E

data:25/01/2023

**Catalogo ricambi
Spare parts catalog
Catalogue de pièces détachées
Ersatzteilkatalog
Catálogo de repuestos
Catálogo de peças de reposição
Каталог запасных частей**

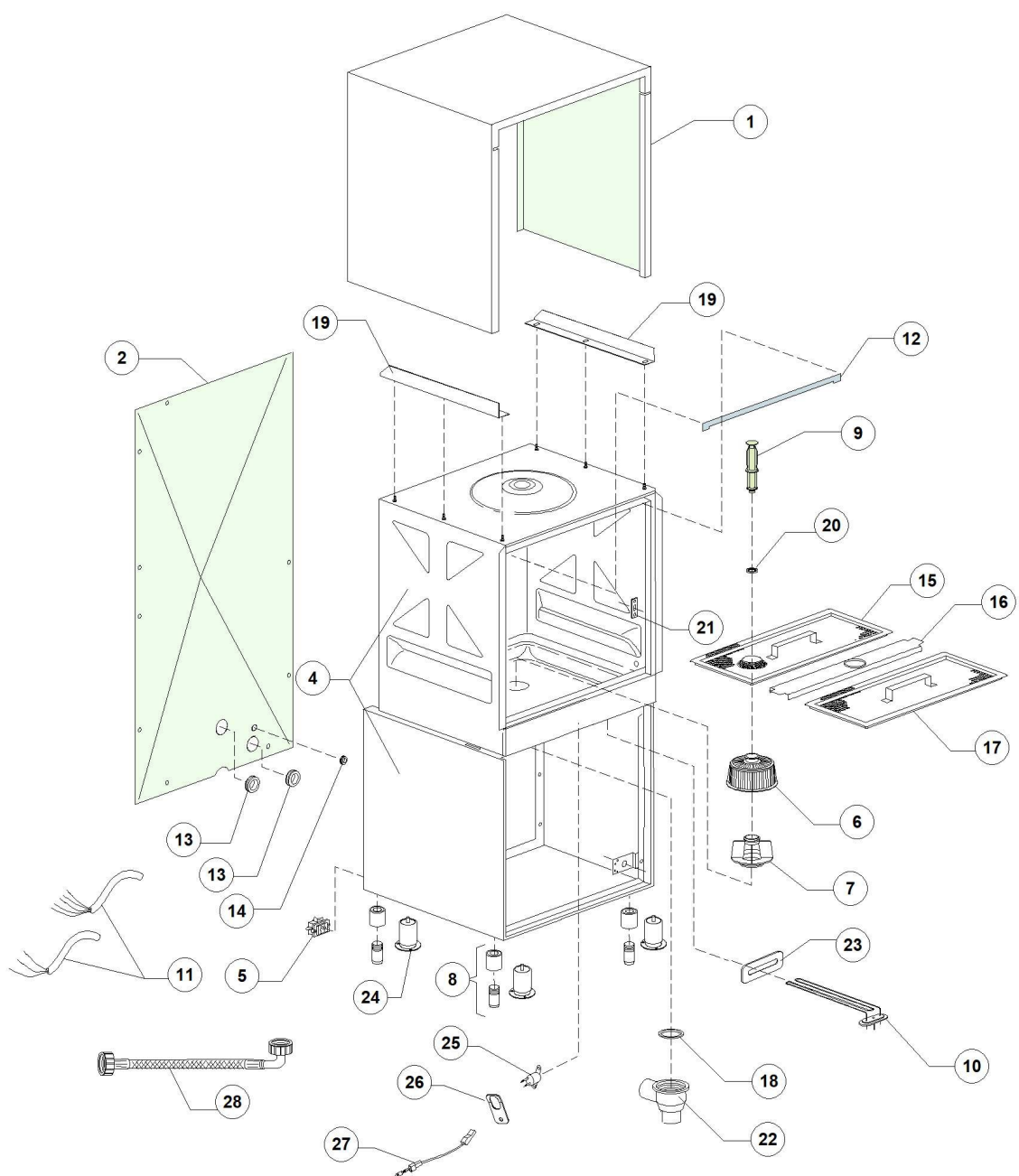
LP1 S5 PLUS BT PAP 380-400/3N/50 EAC



S/N:DWQ1005072



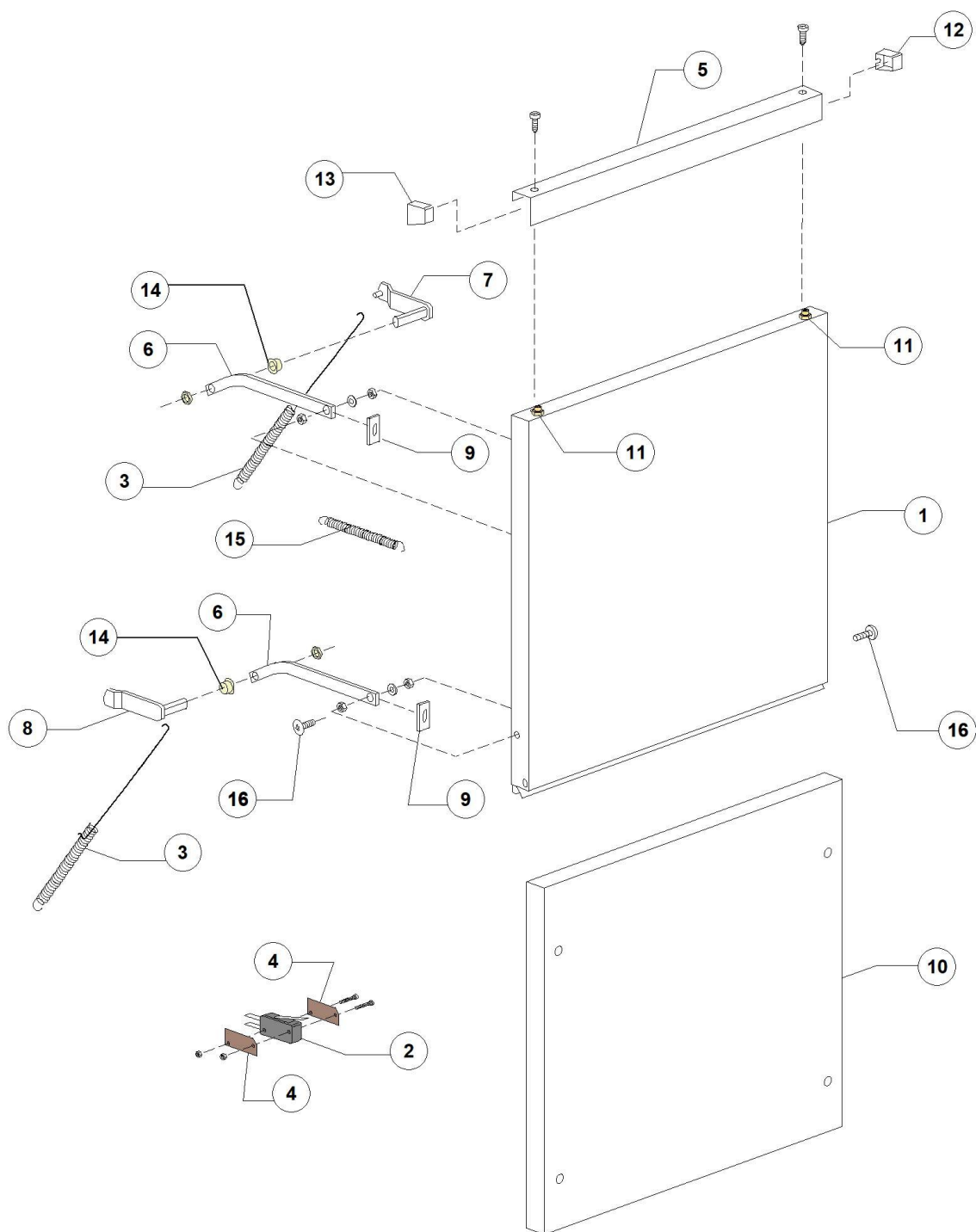
LP1 S5 PLUS BT PAP 380-400/3N/50 EAC - DWQ1005072 - General body parts - DW123E



LP1 S5 PLUS BT PAP 380-400/3N/50 EAC - DWQ1005072 - General body parts - DW123E

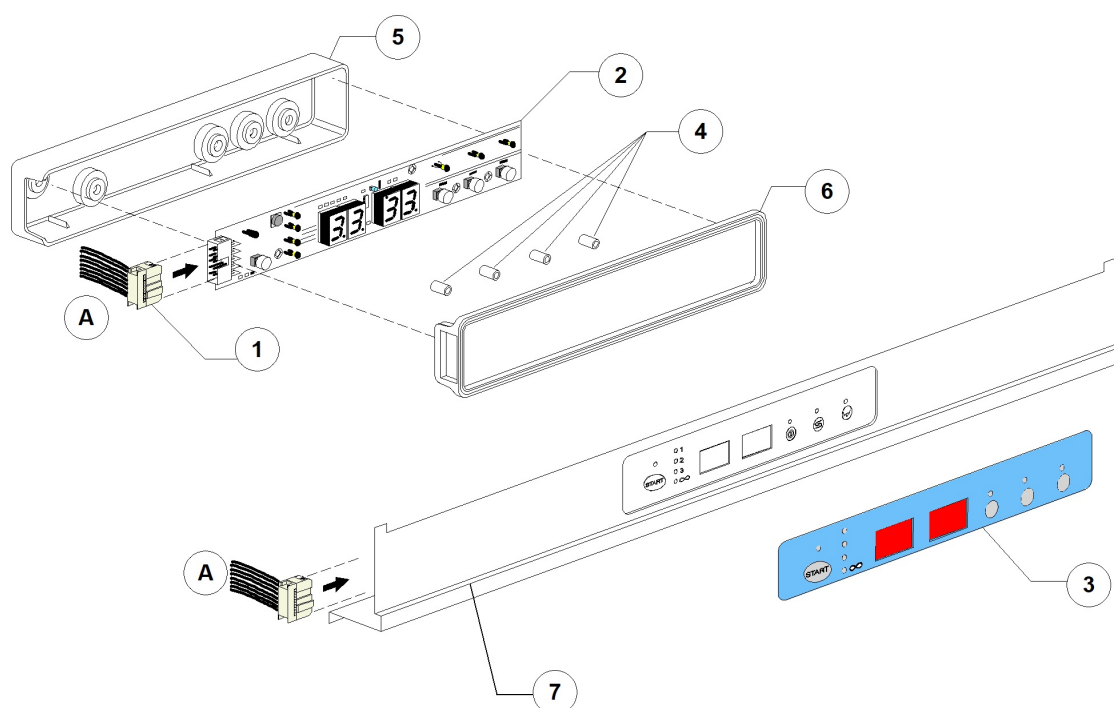
Pos.	Code	Descrizione	Description
1	DW550944	CAMICIA PER PAN.COMANDI SUP.GS100	COVER GS100
2	DW550945	SCHIENALE PER PANN.SUPERI GS100	UPPER BACK PANEL 1000E
4	DW550937	CARROZZERIA NORM.CASSONE+BASE GS100	BODYWORK 1000/2011
5	DW15065/A	FISSACAVO PER VITI AUTOF (NR.2x11007)	CABLE-FASTENER WITH SCREW
6	DW500616	FILTRO ASPIR. GS50 GRIGIO	SUCTION FILTER
7	DW500615	GHIERA CON INNESTO FILTRO MOD.50	FERRULE FOR FILTER CLUTCH
8	DW15116	"PIEDINO 2" M10 REG. 132-210"	"ADJUSTABLE FOOT M10 132-210 2""
9	DW500619	ASSIEME TROPPO PIENO H208 CON TAPP	OVERFLOW PIPE H208
10	DW150047	RESIST.2700/2940W 230/240V 1	2700/2940W 230/240V 1 HEATING ELEM.
11	DW80200	CAVO ALIMENTAZIONE 5X4X3400	CABLE 5X4X3400
12	DW550207	GUARNIZIONE BATTUTA SPORT.GS100SP.2	DOOR SEAL
13	DW13324	PASSACAVO GOMMA D.46X50	RUBBER FAIRLEAD D.46X50
14	DW13323	PASSACAVO IN GOMMA D.13	RUBBER FAIRLEAD D.13 (MIN. 2 PCS)
15	DW550912	FILTRO SUPERF.VASCA X T.PIENO GS100	SURFACE FILTER FOR OVERFLOW
16	DW75926	TRAVERSO SUPPORTO FILTRO DOPPIO	DOUBLE FILTER TRANSVERSAL SUPPORT
17	DW75626	SEMIFILTRO SUPERFICIE	SURFACE HALF-FILTER
18	DW80208	GUARNIZIONE RAMPA LP2 DIAM.95X75X3	RISER GASKET D.95X75X3 (MIN. 2 PCS)
19	DW550947	SUPPORTO CAMICIA PANN.SUP.GS100-G600	ASSEMBLY SHELL SUPPORT
20	DW13021	GUARNIZIONE DEM 40 PER TROPPOPP. GS	OVERFLOW PIPE GASKET DEM 40 (MIN. 2 PCS)
21	DW150401	GUIDA ASTA CURVA	DOOR ROD SLIDE (MIN. 4 PCS)
22	DW500603	POZZETTO SCARICO CON FILETTO	SCRAP TRAY
23	DW250043	PIASTRINA RESISTENZA VASCA	TANK HEATING ELEMENT PLAQUE
25	DW15552/B	TERMOST. SICUR.VASCA KLIXON SENZA STAFFA	KLIXON TANK SAFETY THERMOSTAT
26	DW15552/A	STAFFETTA PER TERMOSTATO VASCA KLIXON	THERMOSTAT SUPPORT
27	DW609518	SPEZ. CABL. TERMICO RESIST. VASCA SOTTOB	TANK HEATING ELEMENT WIRING FOR THERMIC
28	DW10726	CANNA CARICO PICC. WRAS m1,5x3/4 EN61770	LOAD PIPE WRAS M1,5x3/4 EN61770

LP1 S5 PLUS BT PAP 380-400/3N/50 EAC - DWQ1005072 - Door - DW123E



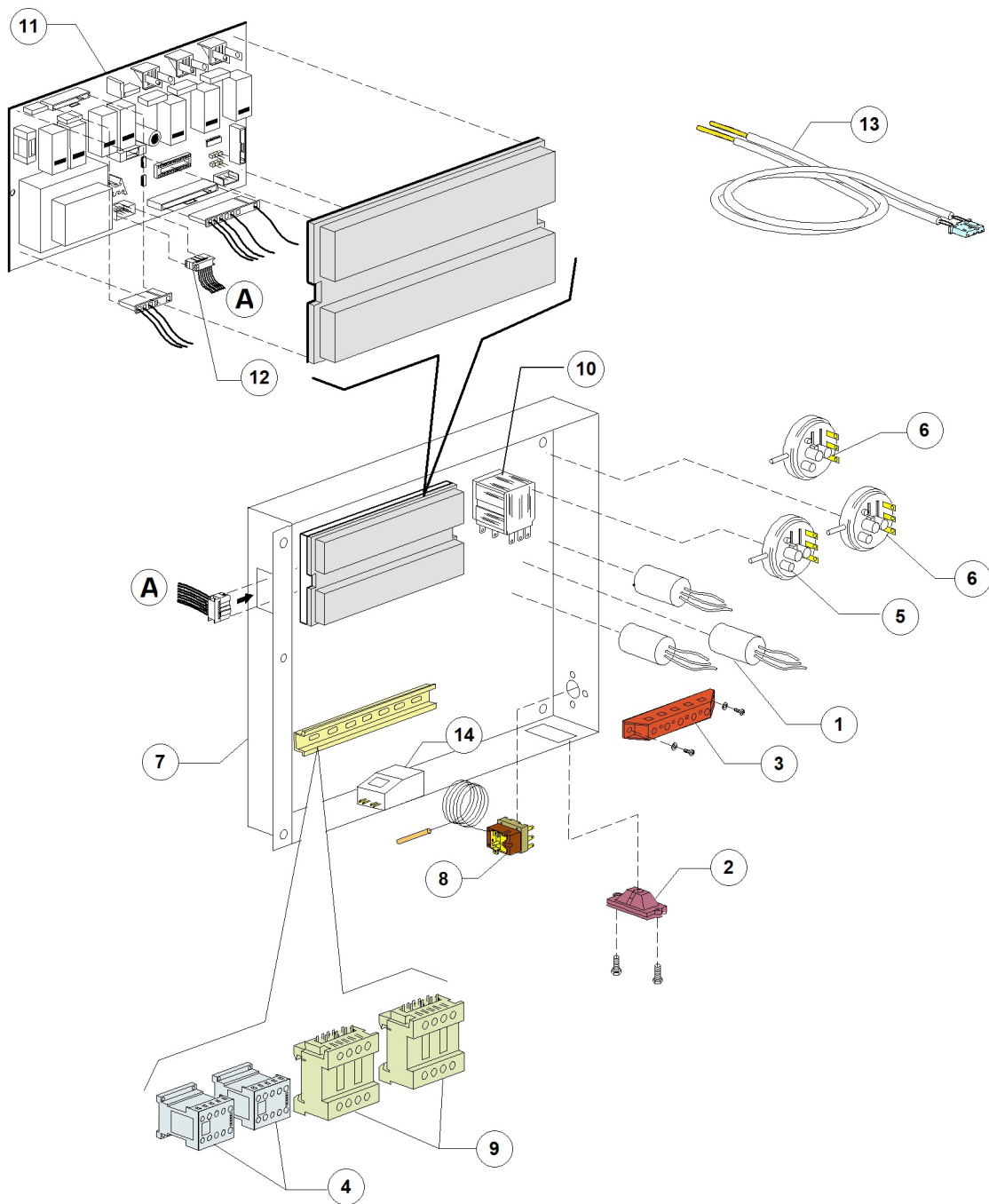
LP1 S5 PLUS BT PAP 380-400/3N/50 EAC - DWQ1005072 - Door - DW123E

Pos.	Code	Descrizione	Description
1	DW550950	PORTA (SENZA MANIGLIA) 100	DOOR 1000E/2011
2	DW10704	MICRO 16A SICUREZZA PORTA	DOOR MICROSWITCH
3	DW550212	MOLLA SPORT.GS100 INF.LUNGA FIL 2.2	DOOR LONG SPRING
4	DW10770	ISOLANTE PER MICROSWITCH	DOOR MICROSWITCH INSULATION (MIN. 3PCS)
5	DW550939/D	MANIGLIA ELEC1000 DIHR/2014	
6	DW150221/A	ASTA PER PORTA CURVA GS100	DOOR ROD
7	DW550908	CERNIERA DX GS100	RIGHT DOOR HINGE GS100
8	DW550909	CERNIERA SX GS100	LEFT DOOR HINGE GS100
9	DW135222	BATTUTA CERNIERA PORTA K50	DOOR HINGE BLOCK
10	DW550955	SOTTOPORTA GS100/04	FRONT PANEL GS100/04
11	DW11226	"DADO HS A1 M4-10 INOX "INTENSE""	S/S NUT M4
14	DW550210	BOCCOLA FIX ASTA PORTA CURVA GS100	DOOR ROD FASTENING FERRULE
15	DW550206/A	MOLLA SPORTELLLO GS100 SUP.CORTA FIL	DOOR SHORT SPRING
16	DW11168	VITE M6X12 TCB T.LARGA 13X3 INOX	M6X12 LARGE TCB S/S SCREW 13X3



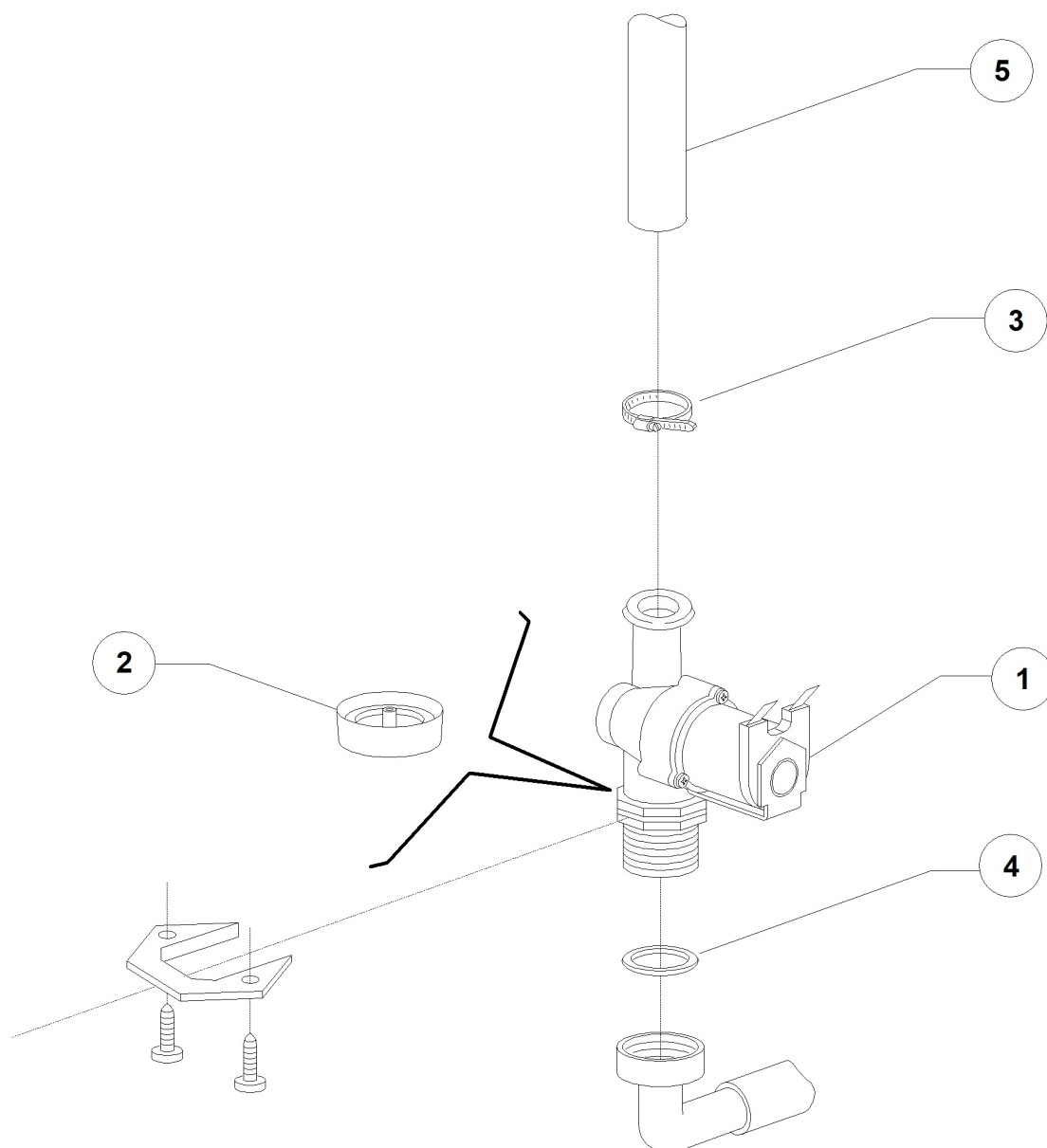
LP1 S5 PLUS BT PAP 380-400/3N/50 EAC - DWQ1005072 - Control panel and switches - DW123E

Pos.	Code	Descrizione	Description
1	DW50652	"PIATTINA MULTIFILO "F16p" L3000"	RIBBON CABLE F16p L3000
2	DW50602	"PULSANTIERA A MEMBRANA "ELITE 2010""	PUSH BUTTON PANEL ELITE 2010
3	DW560989	MOSTRINA ELC DIHR/2014 (COPER.INTEGR)	CONTROL OVERLAY DIHR
4	DW50561	DIST. SCHEDE ELETTR. 2009 D.8X10	MAINBOARD SPACER D.8X10
5	DW50602/A	SCATOLA PROT. SCHEDA 50602 (185X40X19)	ELECTRONIC BOARD PROTECTION BOX 50602
6	DW50602/B	GUARNIZIONE PER SCATOLA 50602/A	PROTECTION BOX GASKET DW50602/A
7	DW550961	PANN.COMANDI ELECTRON1000 - DIHR/2014	



LP1 S5 PLUS BT PAP 380-400/3N/50 EAC - DWQ1005072 - Electric control components - DW123E

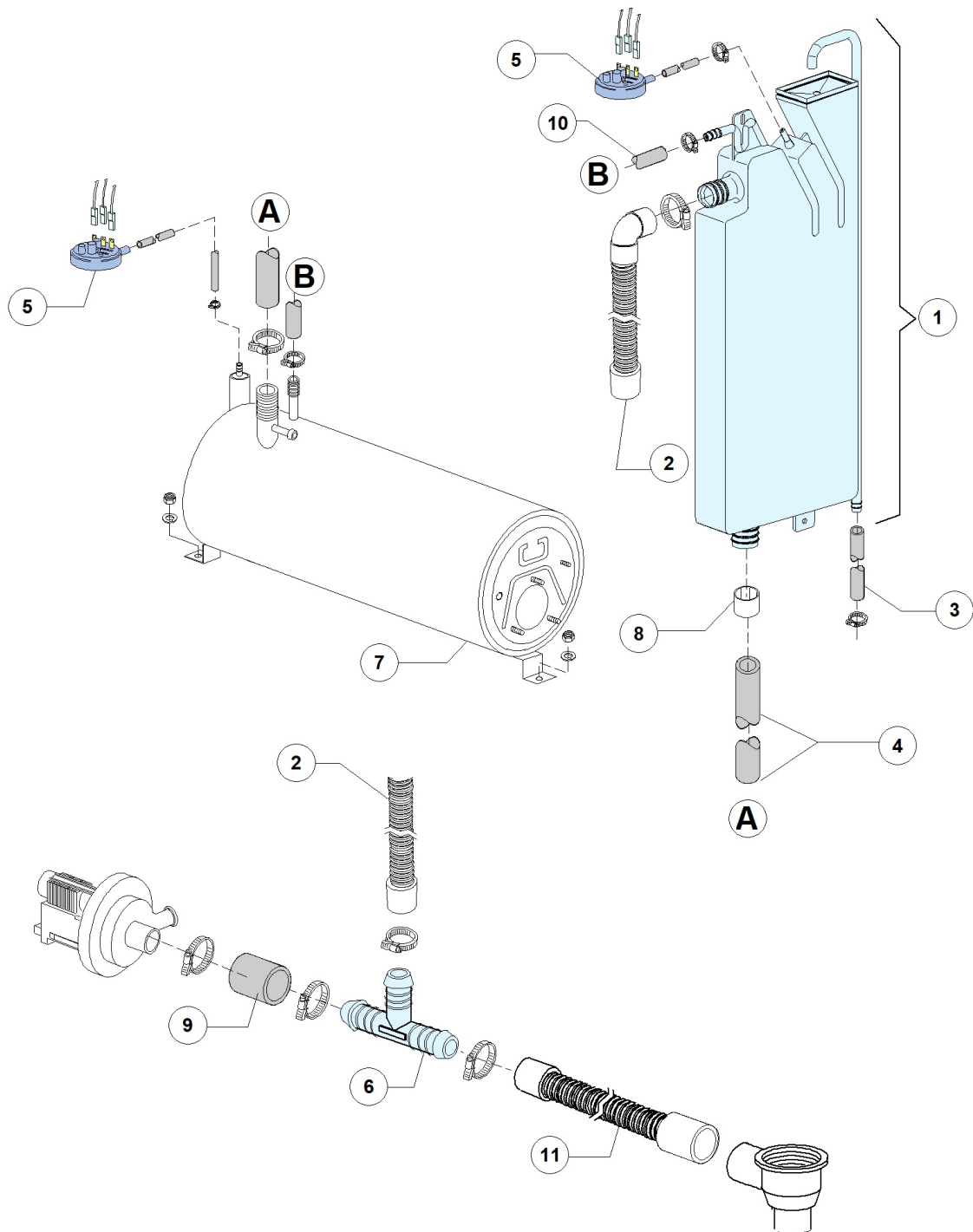
Pos.	Code	Descrizione	Description
1	DW15149	FILTRO ANTIDIS.F3 (CX0.47MF)	ANTIJAMMING FILTER F3 (CX0.47MF)
2	DW15065/A	FISSACAVO PER VITI AUTOF (NR.2x11007)	CABLE-FASTENER WITH SCREW
3	DW500551	MORSETTIERA 6 POLI KL116/6	TERMINAL BOARD 6 POLES FV122 RED
4	DW15086	TELERUTTORE 230V 50/60Hz 4C AC3(6A)	CONTACTOR 230V 50/60Hz 4C AC3(6A)
5	DW10300026	PRESSOSTATO 76-38	PRESSURE SWITCH 76-38
6	DW10706/A	"PRESSOSTATO "EL." 46-26"	PRESSURE SWITCH 46-26
7	DW550907	PORTACOMPONENTI GS100	ELECTRIC COMPONENTS PANEL 1000E
8	DW2000430	TERMOSTATO DI SICUR. 110 1500PVC	SAFETY THERMOSTAT 110 1500PVC
9	DW10300050	TELERUTT. 25A/12A 4NA 230V 50-60HZ	CONTACTOR 25A/12A 4NA 230V 50-60HZ
10	DW16047	RELE TRIP.16A 230VAC 50/60Hz	TRIPOLAR RELAY 16A 230VAC 50/60Hz
11	DW50604	"SCHEDA MADRE "ELITE 2010 PLUS" (BL)"	ELITE MAINBOARD 2010 PLUS (BL)
12	DW50652	"PIATTINA MULTIFILO "F16p" L3000"	RIBBON CABLE F16p L3000
13	DW50562	SONDA TERMOSTATO SCHEDA DIHRECO2	THERMOSTAT PROBE DIHRECO2
14	DW50656	SCHEDA SOFT START POMPE MONOF. MAX 1,5HP	SOFT START BOARD MONOPHASE PUMP



LP1 S5 PLUS BT PAP 380-400/3N/50 EAC - DWQ1005072 - Solenoid valve group - DW123E

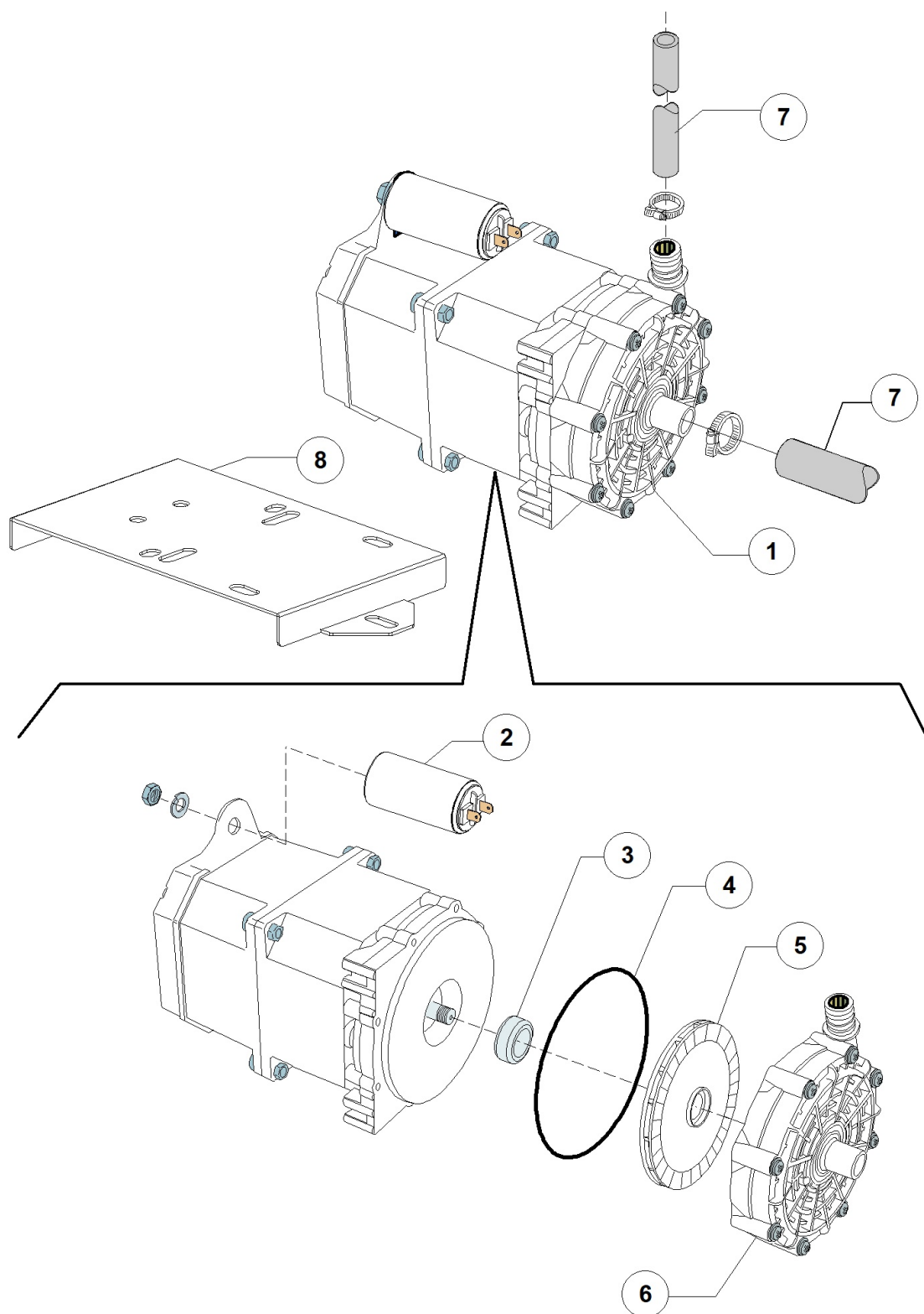
Pos.	Code	Descrizione	Description
1	DW10703	ELETTROV. SING. H2O 230V DIS.LS036	SINGLE SOLENOID VALVE H2O 230V
3	DW11807	FASCETTE AISI 430 12/22	CLAMP 12/22 AISI 430
4	DW13307	GUARNIZ. 3/4 CARICO H2O DIS.LS061	GUARNIZ. 3/4 CARICO H2O DIS.LS061
5	DW2907351	TUBO GOMMA EPDM 11,5X19	11,5X19 EPDM RUBBER HOSE

LP1 S5 PLUS BT PAP 380-400/3N/50 EAC - DWQ1005072 - Break Tank - DW123E



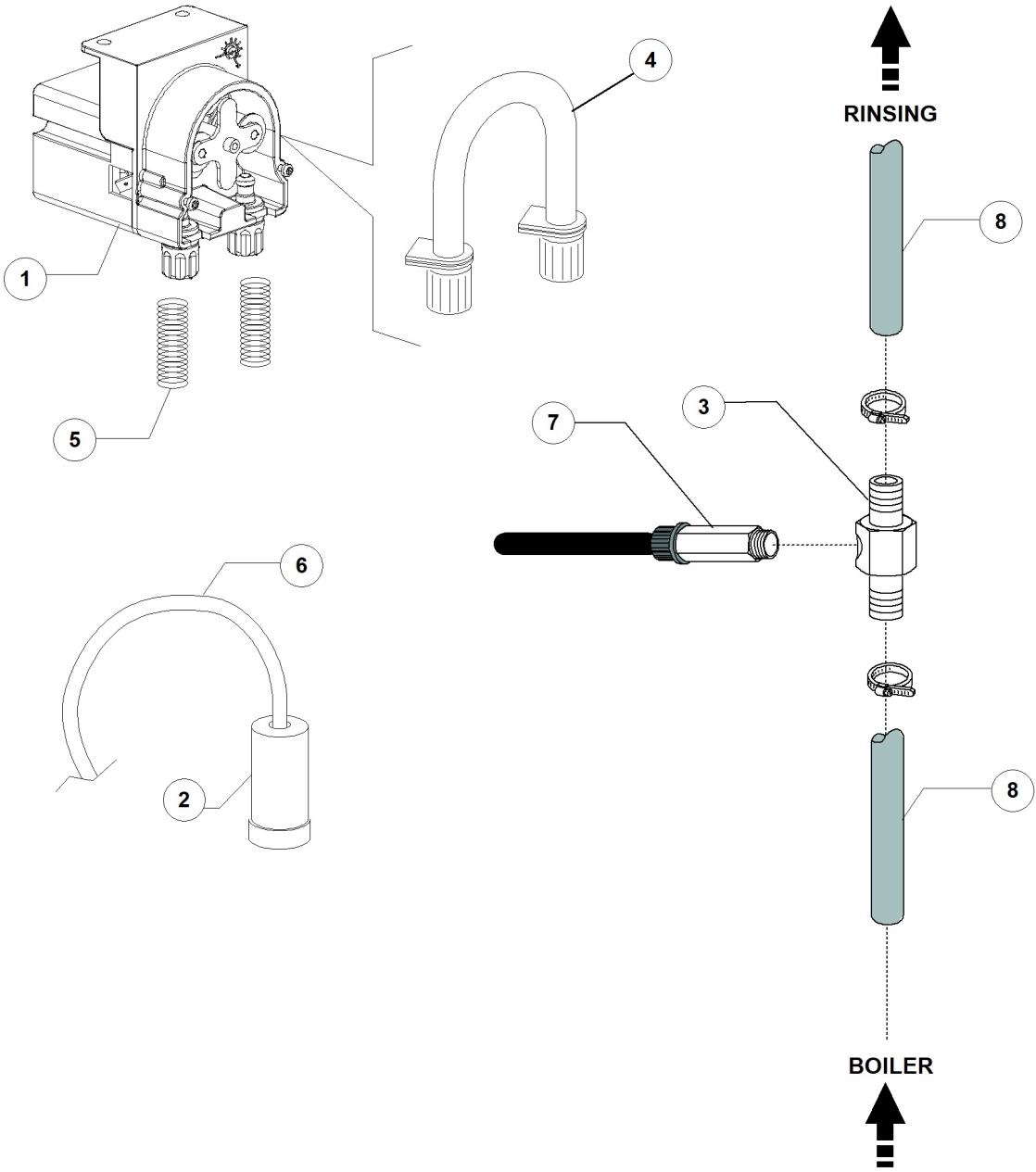
LP1 S5 PLUS BT PAP 380-400/3N/50 EAC - DWQ1005072 - Break Tank - DW123E

Pos.	Code	Descrizione	Description
1	DW15720	ASSIEME BREAK TANK 3.5	BREAK TANK ASSEMBLY 3.5LT
2	DW15721	CANNA B.T. D28-90°/D24 DIRITTO L1070	BREAK TANK LONG PIPE D.28/24 L1070
3	DW2907351	TUBO GOMMA EPDM 11,5X19	11,5X19 EPDM RUBBER HOSE
4	DW11600105	MAN.BT-BOILER ATM.RADIO 36X28X500	PIPE COUPLING BT/ATMOSP.BOILER 36X28X500
5	DW10706/A	"PRESSOSTATO "EL." 46-26"	PRESSURE SWITCH 46-26
6	DW540098	DERIV. 3VIE T D25 PLASTICA	PLASTIC Y-PIECE D.25
7	DW11600104	BOILER ATMOSFERICO D190x490 BA(AISI 304)	ATMOSPHERIC BOILER D190x490 BA(AISI 304)
8	DW12533	RINFORZO COLLARE USCITA BREAK TANK	BREAK TANK OUTLET COLLAR REINFORCEMENT
9	DW18044	TUBO DIAM.28 EPDM LAV.SUP. STAR	D.28 EPDM PIPE
10	DW2907351	TUBO GOMMA EPDM 11,5X19	11,5X19 EPDM RUBBER HOSE



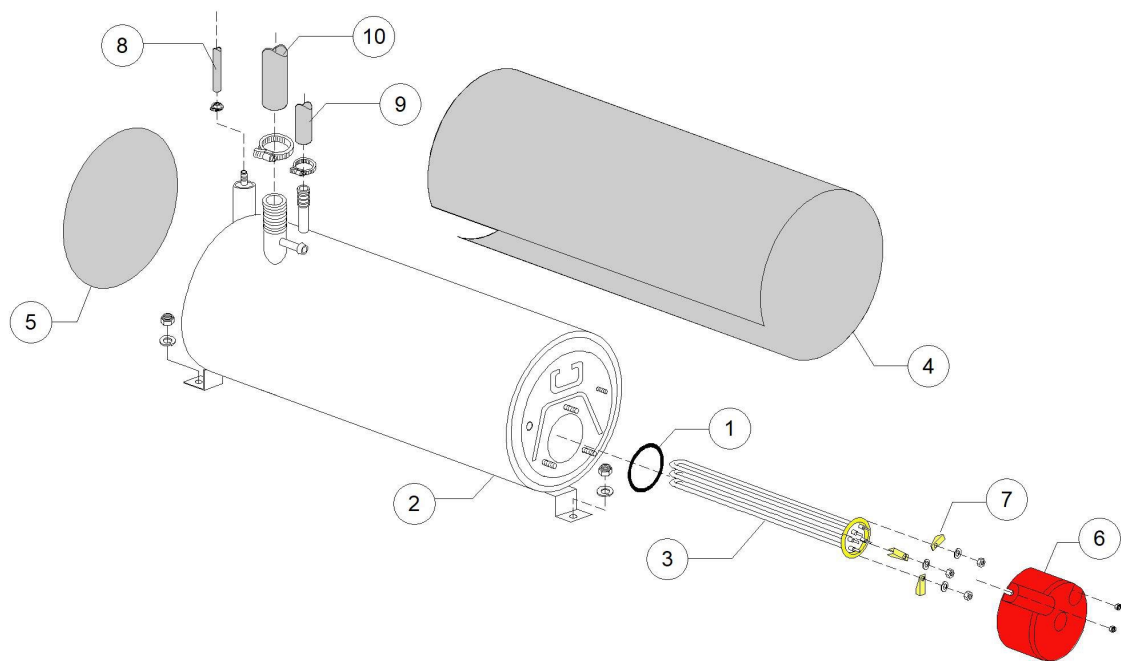
LP1 S5 PLUS BT PAP 380-400/3N/50 EAC - DWQ1005072 - Rinsing pump / Booster pump - DW123E

Pos.	Code	Descrizione	Description
1	DW15100/DO	POMPA RISCIAQUO 220-240/50 (PLUS)	RINSE PUMP 220-240V/50HZ (PLUS)
2	DW16043	#CONDENSATORE POMPA uf8	uf8 CONDENSER
3	DW15100/S	TENUTE ROTANTI EPDM(15100/DO)	EPDM ROTARY SEAL (15100/DO)
4	DW15100/T	OR EPDM(15100/DO)	O-RING EPDM (15100/DO)
5	DW15100/U	#GIRANTE 90X2.5 (15100/DO)	PUMP ROTOR 90X2.5 (DW15100/DO)
6	DW15100/V	#CHIOCCIOLA ANTE. (15100/DO)	SCROLL FOR PUMP 15100/DO
7	DW2907351	TUBO GOMMA EPDM 11,5X19	11,5X19 EPDM RUBBER HOSE
8	DW23235	STAFFA SUPP. POMPA A.P.	BOOSTER PUMP SUPPORT



LP1 S5 PLUS BT PAP 380-400/3N/50 EAC - DWQ1005072 - Rinse aid dispenser group - DW123E

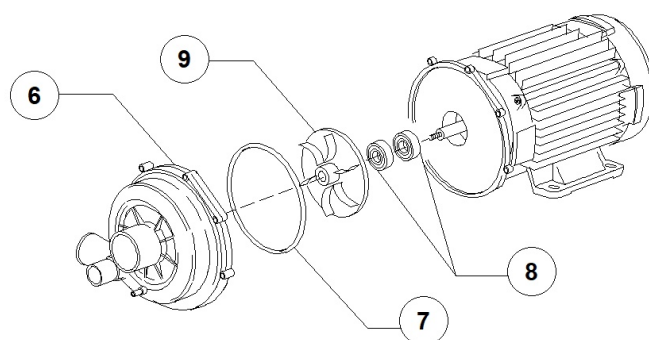
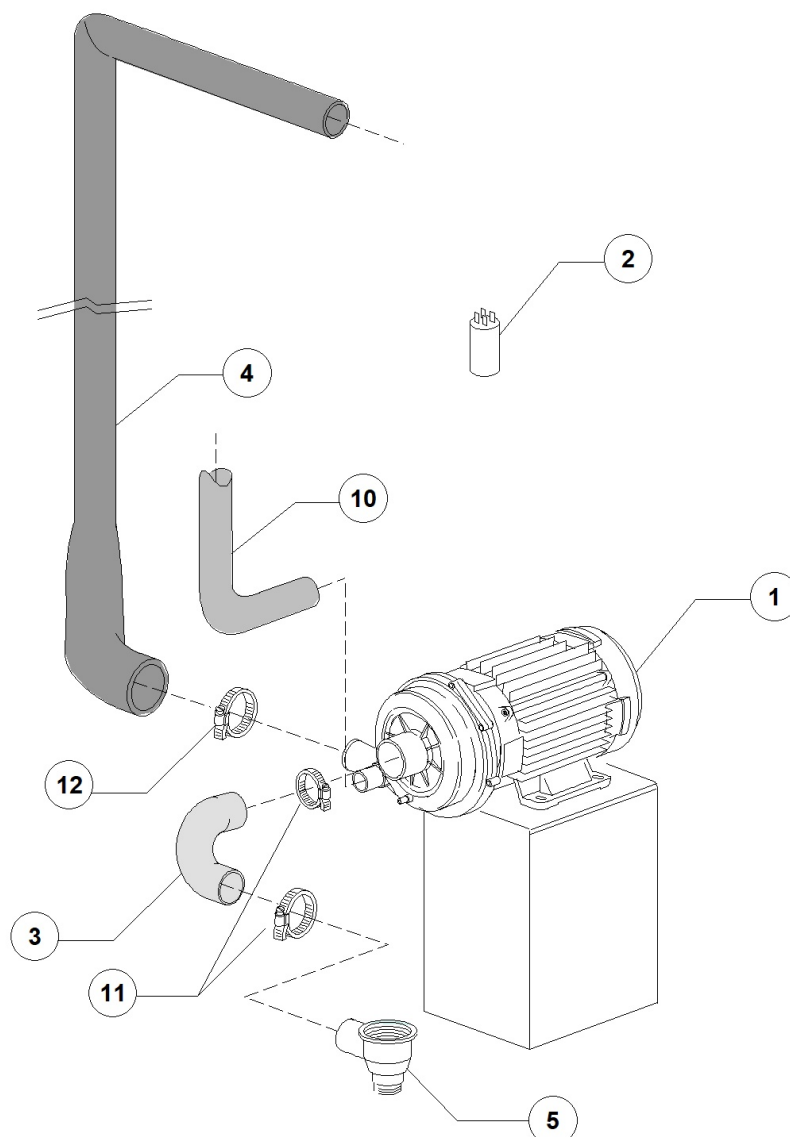
Pos.	Code	Descrizione	Description
1	DW15985/C	DOS.ELETT.BRIL PERISTALTICO CONTINUO	RINSE AID PERISTALTIC DOSING PUMP
2	DW15058	FILTRINO CON PESO ASPIR. DET/BRIL	SMALL FILTER (MIN. 3 PCS)
3	DW3003906/A	DERIV. A T ENTR. BRILL. SENZA TAPPO	"T-PIECE W/PLUG 1/8"
4	DW15186/C	TUBO MEMBRANA DOS BRIL CONTINUO	MEMBRANE TUBE FOR RINSE AID DISPENSER
5	DW10763	MOLLA D.05 INOX PER TUB. D.6x4 PVC	PIPE S/S SPRING
6	DW14502/A	TUBETTO PVC 6X4 VERDE	6X4 PVC GREEN SMALL PIPE
7	DW15122	VALVOLA 1/8G TENUTA EPDM	1/8G VALVE SEAL
8	DW2907351	TUBO GOMMA EPDM 11,5X19	11,5X19 EPDM RUBBER HOSE



LP1 S5 PLUS BT PAP 380-400/3N/50 EAC - DWQ1005072 - Boiler group - DW123E

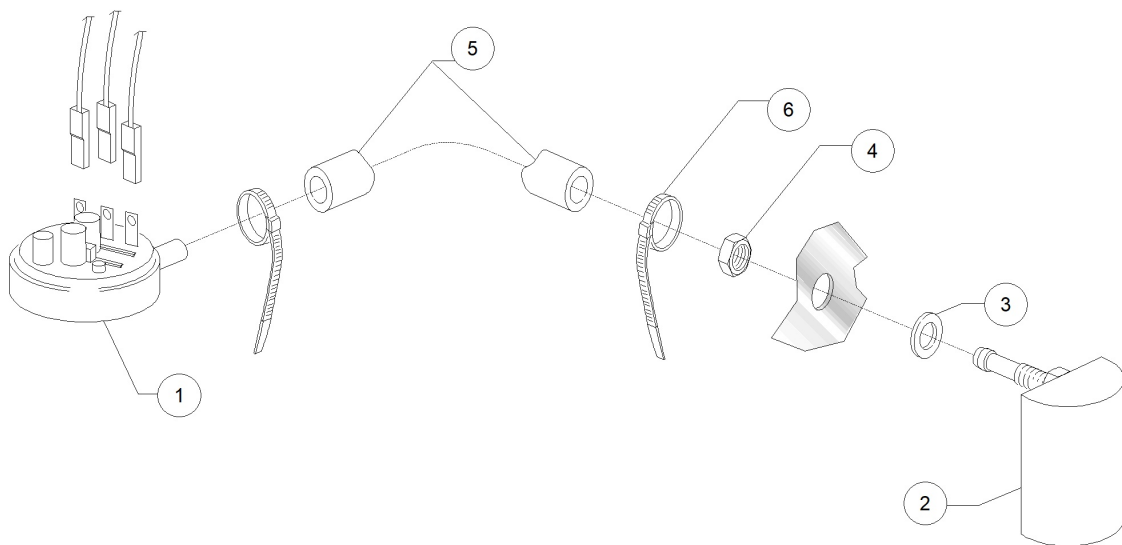
Pos.	Code	Descrizione	Description
1	DW13015	GUARNIZIONE 6225 OR 160 NBR	6225 O-RING 160 NBR
2	DW11600104	BOILER ATMOSFERICO D190x490 BA(AISI 304)	ATMOSPHERIC BOILER D190x490 BA(AISI 304)
3	DW30001011	RESIST.9000/9800W 230/240V 3	9000/9800W 230/240V 3 HEATING ELEM.
4	DW11600110	COIBENTE PER BOILER ATM D190	BOILER INSULATING ATM D190
5	DW91115	DISCO IN ESPANSOLENE AUTOESTING.D.190X3	INSULATING DISK D.190
6	DW75311	CUFFIOTTO PER RESISTENZA 26/03/97	HEATING ELEMENT COVER
7	DW16045	STAFFE FISSAGGIO RESIST.FORO 6.3	HEATING ELEMENT MOUNTING BRACKET D.6,3
8	DW14508	TUBO EPDM 4.5X9 PER PRESSOSTATO	EPDM HOSE 4.5X9 FOR PRESSURE SWITCH
9	DW2907351	TUBO GOMMA EPDM 11,5X19	11,5X19 EPDM RUBBER HOSE
10	DW11600105	MAN.BT-BOILER ATM.RADIO 36X28X500	PIPE COUPLING BT/ATMOSP.BOILER 36X28X500

LP1 S5 PLUS BT PAP 380-400/3N/50 EAC - DWQ1005072 - Wash pump group - DW123E



LP1 S5 PLUS BT PAP 380-400/3N/50 EAC - DWQ1005072 - Wash pump group - DW123E

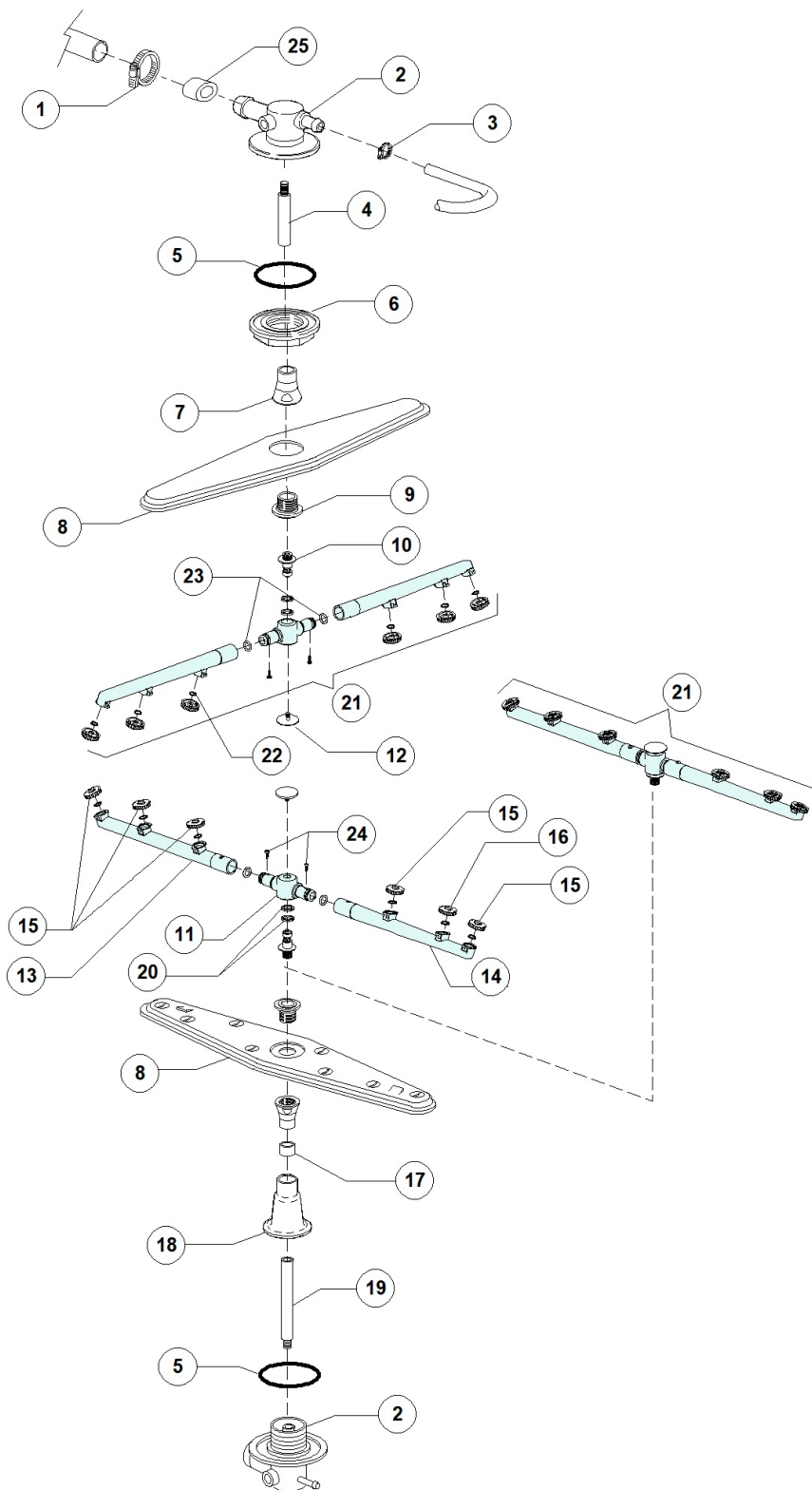
Pos.	Code	Descrizione	Description
1	DW22009	POMPA HP 1.5 230 V. MONO	PUMP HP1.5 230V
2	DW15081/A	CONDENSATORE 16 uF.X450V.	16 UF CONDENSER
3	DW550229	MANICOTTO ASPIR.ELECT-LP VERS.05	SUCTION PIPE COUPLING
4	DW550228	MANICOTTO MANDATA SUP.GS100 VERS.04	UPPER DELIVERY PIPE COUPLING
5	DW500603	POZZETTO SCARICO CON FILETTO	SCRAP TRAY
6	DW22009/D	CHIOCCIOLA D.170 T40 D60-50-30 APERTO	SCROLL FOR PUMP D.170
7	DW15080/A	#GUARNIZIONE HP 1.5	PUMP GASKET 1,5HP
8	DW15080/C	"PREMISTOPPA+CONTROF.POMPA "F" HP075"	ROTATING SEALS HP0,75
9	DW15079/A	#GIRANTE POMPA D.102A(DARE DW22009/A)	PUMP ROTOR D.102A(REPLACED BY DW22009/A)
10	DW15033/A	TUBO EPDM MANDATA LAV.INF. NUOVO	LOW EPDM DELIVERY WASH PIPE
11	DW2902491	FASCETTA AISI-430 60/80	CLAMP 60/80 AISI 430
12	DW11810	FASCETTE AISI 430 40/60	CLAMP 40/60 AISI 430



LP1 S5 PLUS BT PAP 380-400/3N/50 EAC - DWQ1005072 - Pressure switch group - DW123E

Pos.	Code	Descrizione	Description
1	DW10300026	PRESSOSTATO 76-38	PRESSURE SWITCH 76-38
2	DW135911/C	ASSIEME GABBIA D'ARIA GRIGIA L65	GREY AIR TRAP ASSEMBLY L65
3	DW13301	GUARNIZ. IN FASTIT 202 D14x8x1,5	O-RING ROLMART D14X8X1,5
4	DW11702	DADO M8 INOX UNI5588 DIN934	S/S NUT M8 DIN934 (MIN. 20 PCS)
5	DW14508	TUBO EPDM 4.5X9 PER PRESSOSTATO	EPDM HOSE 4.5X9 FOR PRESSURE SWITCH
6	DW10738	FASCETTA PLASTICA 98X2.5	PLASTIC CLAMP 98X2,5

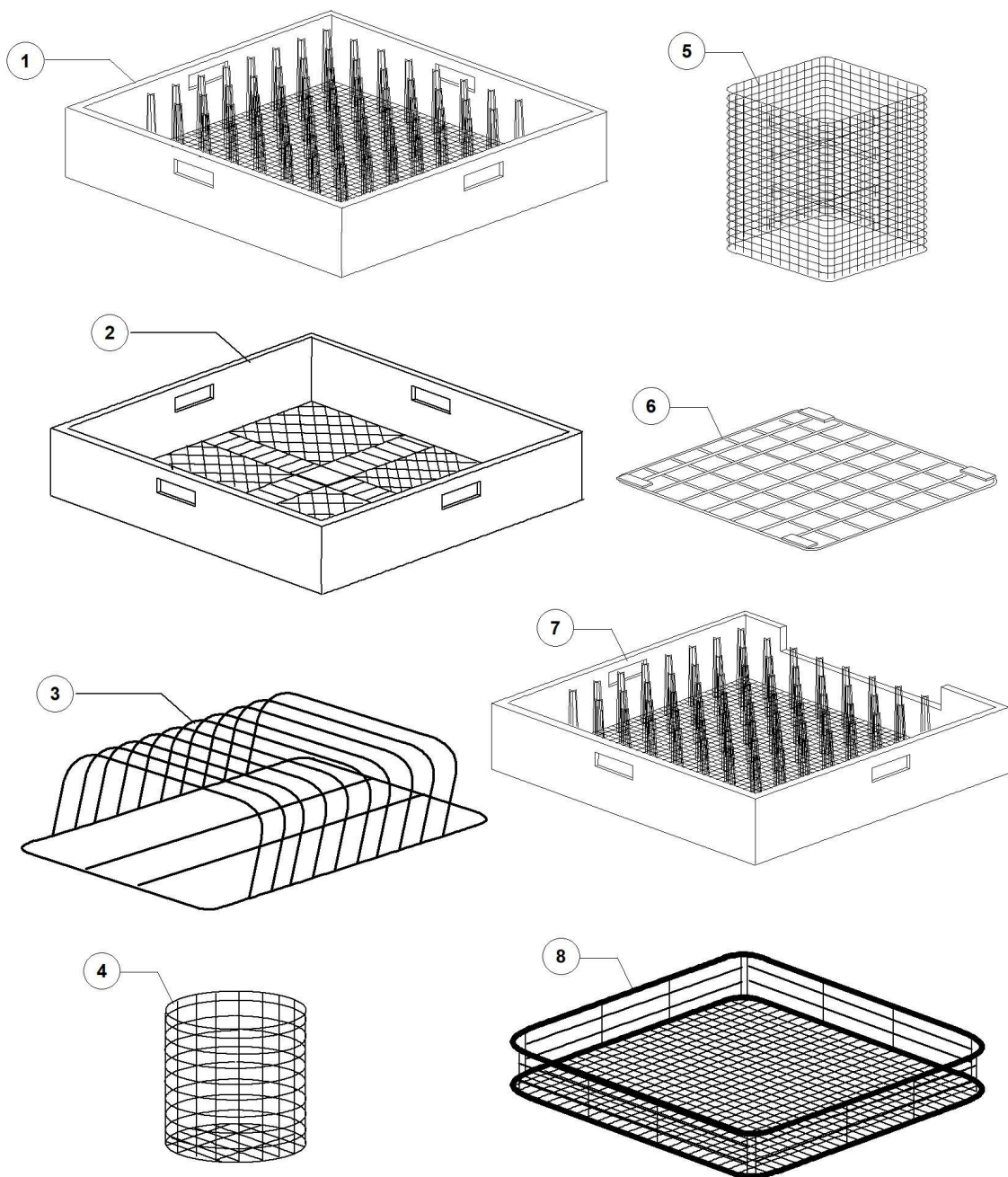
LP1 S5 PLUS BT PAP 380-400/3N/50 EAC - DWQ1005072 - Turret group with rotating arms - DW123E



LP1 S5 PLUS BT PAP 380-400/3N/50 EAC - DWQ1005072 - Turret group with rotating arms - DW123E

Pos.	Code	Descrizione	Description
1	DW11806	FASCETTE AISI 430 25/40	CLAMP 25/40 AISI 430
2	DW500612	TORRETTA SUP./INF. GS GRIGIO	WASH ARMS'LOWER / UPPER SUPPORT GS
3	DW11807	FASCETTE AISI 430 12/22	CLAMP 12/22 AISI 430
4	DW75315	PROLUNGA PER ASSE RISC. 11S	RINSE AXLE EXTENSION
5	DW13015	GUARNIZIONE 6225 OR 160 NBR	6225 O-RING 160 NBR
6	DW500623	GHIERA FISS.TORRETTA TIPO 28 GS GRI	FASTENING RING NUT FOR TURRET
7	DW75317	DADO PER MOZZO GIR. 11S/96	NUT FOR ROTOR HUB 11S/96
8	DW23239	GIRANTE LAVAGGIO LP1-800	WASH ROTOR
9	DW75316	MOZZO PER GIRANTE 11S/96	HUB FOR ROTOR 11S/96
10	DW10651	ASSE RISCIAQUO/03	RINSE AXLE 03
11	DW75920/A	MOZZO PER GIRANTE RISCIAQUO 2009	HUB FOR RINSE ROTOR 2009
12	DW10652	VITE RISCIAQUO/03	RINSE ARM SCREW
13	DW75920/D	TUBO RISC. DX GRIGIO 2009	GREY RIGHT RINSE ARM 2009
14	DW75920/S	TUBO RISC. SX GRIGIO 2009	GREY LEFT RINSE ARM 2009
15	DW10371	TESTA UGEL. RISC. 95 APER. GRIG.(MIN 10)	OPENED RINSE NOZZLE (BATCH 10PCS)
16	DW10372	TESTA UGEL.RISC.95 CHIU. GRIGIO (MIN 10)	CLOSED RINSE NOZZLE (BATCH 10PCS)
17	DW550220	DISTANZIALE MANICOTTO E MOZZO GIR.	ROTOR HUB/PIPE COUPLING SPACER
18	DW550225	MANICOTTO INF.GS100 L122mm GRIG	LOWER PIPE COUPLING L122
19	DW550219	ASSE DI COLL.RISC.DISTRIB.INF.GS100	LOWER DISTRIBUTOR RINSE AXLE
20	DW75920/B	ANELLI TENUTA MOZZO RISCIAQUO 2009	BAGUE D'ESPACEMENT
21	DW75920	GRUPPO RISC.SUP/INF 2009	UPPER/LOWER RINSE ASSEMBLY 2009
22	DW13002	GUARNIZIONE OR R6 NBR	O-RINGR R6 NBR (MIN. 10 PCS)
23	DW13002	GUARNIZIONE OR R6 NBR	O-RINGR R6 NBR (MIN. 10 PCS)
24	DW11004	VITE TCB D.8 DENTATA 4X10 SPAX	4X10 TCB D.8 SPAX TOOTHED SCREW

LP1 S5 PLUS BT PAP 380-400/3N/50 EAC - DWQ1005072 - Baskets - DW123E



LP1 S5 PLUS BT PAP 380-400/3N/50 EAC - DWQ1005072 - Baskets - DW123E

Pos.	Code	Descrizione	Description
1	DWC40	CESTO PIATTI PLASTICA 50X50	PLASTIC PLATES BASKET 500X500
2	DWC44	CESTO BICCHIERI MAGL.LARGA PLASTICA	500X500 LARGE MESH GLASS BASKET
3	DW575005	PORTAVASSOI PER G600 6 POSTI	8 PLACES TRAY HOLDER
5	DWC86/A	CESTELLO PORTA SPATOLE INOX	S/S SPATULA BASKET
7	DWC43	CESTO TRAINO VASSOI (LATO APERTO)	TRAYS BASKET (ONE SIDE OPEN)
8	DWC132	CESTO INOX 500X610X70(RETE 490X600)	500X610 S/S BASKET

