

RACK CONVEYOR MACHINE

ELECTRONICAL SWITCHES
LOWER AND UPPER WASHER

TYPE: 200E

Accessories

HEAT RECOVERY - HR5[KHR5]

STEAM CONDENSER - SC5 [KSC5]

DRYER - DR24 [KDR24]

DRYER - DRA924 [KDRA924]

DRYER - LC 73 [K16AC

DVGW VALVE SYSTEM

TANK INSULATION

DOUBLE SKIN

BOOSTER PUMP

DISPENSER SYSTEM SDN-3

SANITIZATION SYSTEM

ANGLE LOADING TABLE - LC 98 [K25]

Spare parts Manual



Parti di ricambio

Spare Parts

Catalogues pièces

Plezas de recambis

Ersatzteile

INFORMAZIONI GENERALI

Questo catalogo serve per richiedere con esattezza le parti di ricambio

Nelle ordinazioni indicare:

1) il numero dei codici dei particolari seguito dalla descrizione e la quantità desiderata;

2) Il codice alfa-numerico presente nella seconda colonna della tabella ;

I disegni delle parti di ricambio sono solo indicativi e non rappresentano il pezzo in oggetto.

I dati contenuti in questo catalogo sono indicativi e possono essere soggetti a modifiche senza impegno di preavviso.

ALLGEMEINE INFORMATIONEN

Dieser Ersatzteilkatalog dient zur genauen Angabe der Teile bei Ersatzteilbestellungen.

Bei Ersatzbestellung ist folgendes anzugeben:

1) Die Bestellnummer der Ersatzteile mit der entsprechenden Beschreibung genaue Menge;

2) Der alpha-numerischer Code auf der zweiten Reihe in dein Schuld;

Die Zeichnungen der Ersatzteile sind nur als Hinweise gedacht und stellen nicht das betroffene Teil dar.

Bei den im Katalog angeführten Daten handelt es sich um Anhaltsdaten, die jederzeit, ohne Vorankündigung, geändert werden können.

GENERAL INFORMATION

The present spare parts order exactly the right spare parts

When ordering specify:

1) the part's code number followed by its description and quantity needed;

2) The alpha-numeric code is in the second column in the chart;

Spare parts drawings are general and do not represent the part.

The contents of this catalogue are general and can undergo changes without prior notice.

INFORMACIONES GENERALES

El presente catálogo sirve para pedir con exactitud las partes de repuesto

En los pedidos se debe indicar:

1) el número de código de la parte y a continuación la descripción cantidad deseada;

2) El código alfanumerico presente en la segnada columna de la tabla;

Los diseños de las partes de recambio son solo indicativos y no representan la pieza en cuestión.

Los datos contenidos en el presente catálogo son indicativos y pueden modificarse sin aviso previo.

INFORMATIONS GENERALES

Ce catalogue permet de commander correctement les pièces détachées

Les commandes doivent être passées en indiquant:

1) le numero de code des pièces détachées suivi de leur description quantité désirée;

2) le code alphanumérique dans la deuxième colonne du tableau;

Les plans des pièces détachées sont fournis seulement à titre indicatif et ne représentent pas la pièce concernée.

Les données de ce catalogue sont citées seulement à titre indicatif et peuvent être l'objet de modifications sans avis préalable.

ESEMPIO
EXAMPLE
EXEMPLE
BEISPIEL

Rif.	Codici
MODULE:Particolari	
10505	540903
10510	540908
10515	15065/A
10520	540086
10525	540028



Note

Tutte le informazioni riportate si intendono aggiornate alla data di stampa. Il Produttore si riserva il diritto di apportare qualsiasi modifica richiesta dallo sviluppo evolutivo dei suddetti prodotti.

Per la sicurezza ,la garanzia, l'affidabilità ed il valore della lavastoviglie usa solo ricambi originali.Per alcuni codici, sono richieste quantità minime d'ordine.



Attenzione

Questo libretto è parte integrante della lavastoviglie e, in caso di passaggio di proprietà, deve essere consegnato al nuovo acquirente.



Remarque

Toutes les informations contenues dans ce manuel s'entendent mises à jour à la date d'impression. En raison du développement constant de ses produits, usine se réserve le droit d'apporter à tout instant les modifications qu'elle jugera utiles.

Pour la sécurité, la garantie, la fiabilité et la valeur de votre lavevaisselles n'utilisez que des pièces de rechange d'origine.Pour quelque référence on demande un minimum de pièces par commande



Attention

Ce manuel doit être considéré comme partie intégrante de la la lavevaisselles, en cas de transfert de propriété, doit toujours être remis au nouveau propriétaire.



Note

The information contained herein is valid at the time of going to print. The Company reserves the right to make any changes required by the future development of the above-mentioned products.

For your safety, as well as to preserve the warranty reliability and worth of your dishwashers , use original spare parts only.For some codes a minimum quantity for order is required.



Warning

This manual forms an integral part of the dishwashers and - if a transfer of title occurs - must always be handed over to the new owner.



Hinweis




Die Der Hersteller behält sich das Recht vor, jegliche, durch eine Weiterentwicklung der genannten Produkte bedingte Änderungen vornehmen zu können.

Verwenden Sie für Ihre Sicherheit, die Garantie, die Zuverlässigkeit und den Wert Ihrer machine originale Ersatzteile.Für bestimmte Code nummer werden mindesten bestellungen verlangt.



Achtung

Diese Betriebsanleitung ist Bestandteile des machine und muss bei seinem Weiterverkauf dem neuen Besitzer ausgehändigt werden.




Code DW 009M.0001

Model DESCRIPTION


S/N DW A 1000001 Type

CL/Part




400V 3N
3500W

50HZ

 16A

8A
500W


IPX3




Pressione Dinamica alimentazione idrica
Pression dynamique arrivée d'eau
Dynamic pressure water supply
Dynamischer Druck asserreinlauf

200-500 kPa

TECHICAL SPECIFICATION



MADE IN ITALY

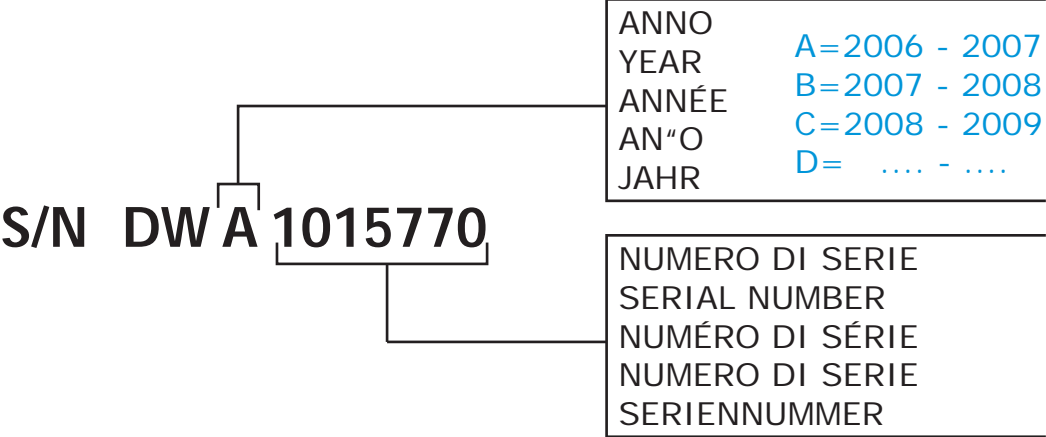
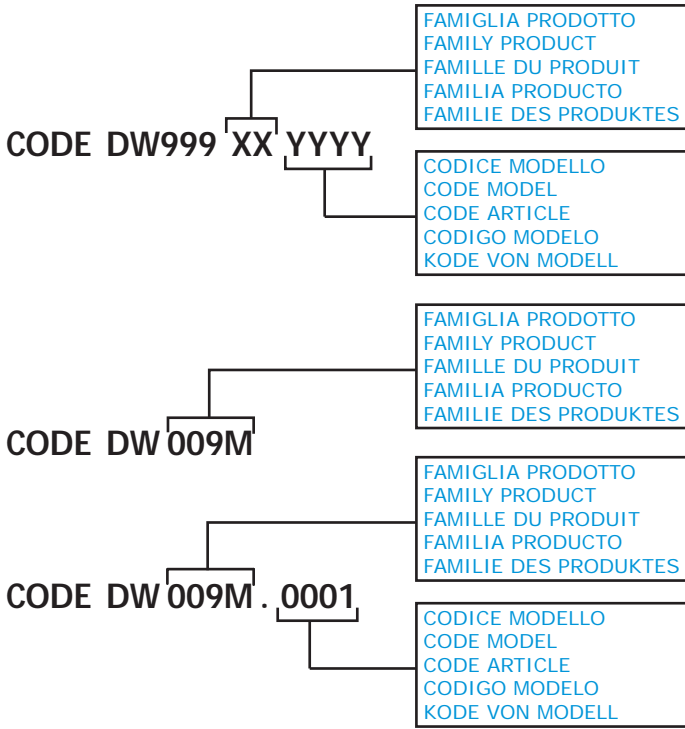


Pressione dinamica vapore saturo
Pression dynamique vapeur satueée
Dymanischer Druck gesättigter Dampf
Pression Dinamica Vapor Saturado

Temperatura massima acqua in ingresso 60°C
Temperature max eau a l'entre
Maximale Temperatur Wasseranschluß
Maximum Water temperature in-feeding

Model 

S/N 



POSIZIONE MATRICOLA / LOCATION OF SERIAL NUMBER / EMBLACEMENT DU NUMERO DE SERIE

MATRICOLA
SERIAL NUMBER
NUMERO DE SERIE

MATRICOLA
SERIAL NUMBER
NUMERO DE SERIE

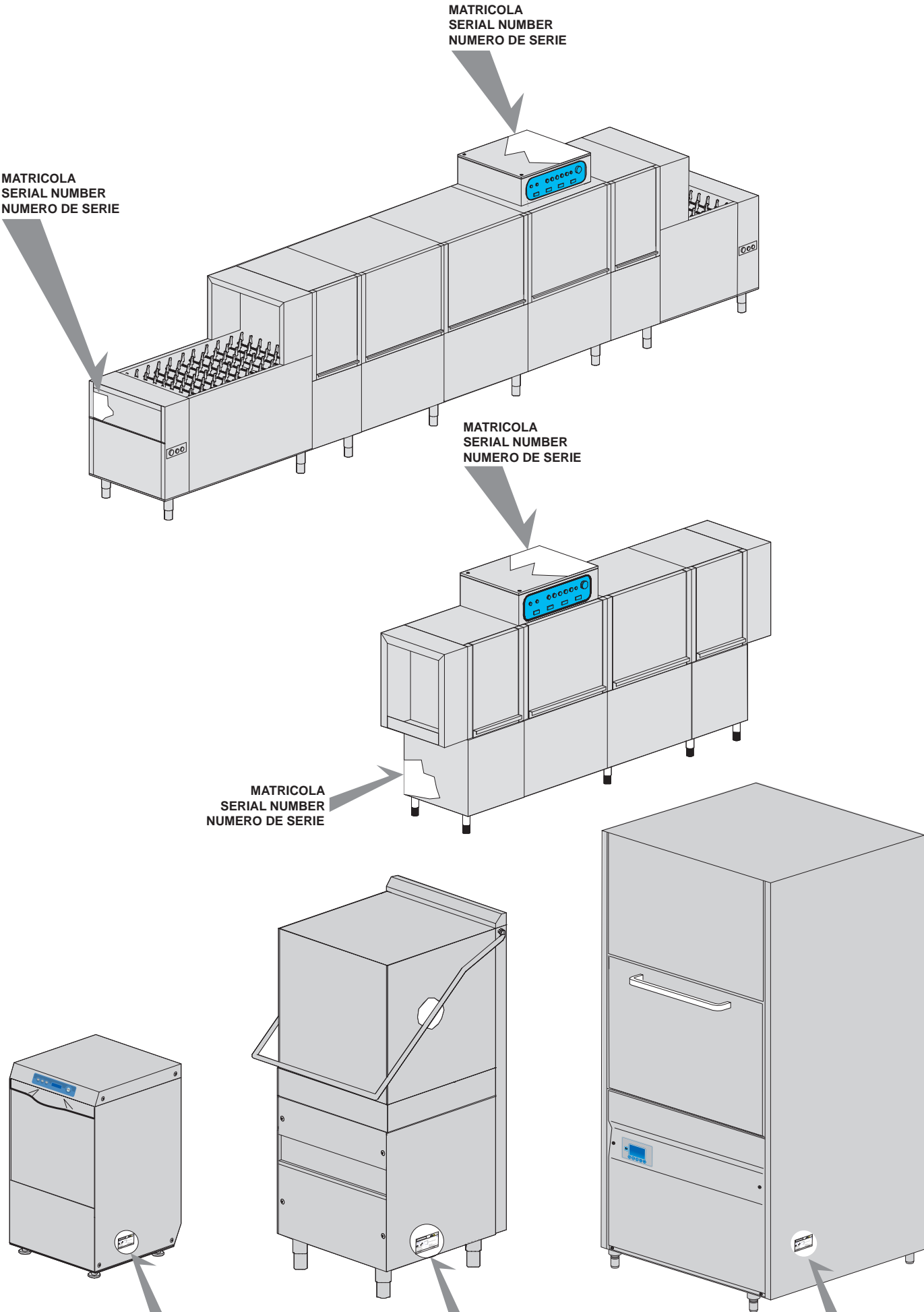
MATRICOLA
SERIAL NUMBER
NUMERO DE SERIE

MATRICOLA
SERIAL NUMBER
NUMERO DE SERIE

MATRICOLA
SERIAL NUMBER
NUMERO DE SERIE

MATRICOLA
SERIAL NUMBER
NUMERO DE SERIE

MATRICOLA
SERIAL NUMBER
NUMERO DE SERIE



1. Spare parts

Control Panel ELECTRONIC	9
Closing panels.....	11
Electric parts	13
General parts	15
Economizer components	17
Curtains group components	19
Solenoid valve group	21
Inverter	23
Break Tank	25
Dryer DR24[KDR24] (4,5 kW) - part 1....	27
Dryer DR24 [KDR24] - (4,5 kW) - part 2...29	
Mecanized curve 90° - LC 77/2[KM22]	31
Mecanized curve 180° - LC 77/3 [KM-23].....	33
Dryer mechanics curve 90° - DRA924[KDRA924]....	37
Steam condenser / Heat recovery SC5 - HR5 [KSC5 - KHR5]	
part 1.....	39
Splash guard LC73 / K16AC	43

Steam condenser / Heat recovery SC5 / HR5 - part 2..43

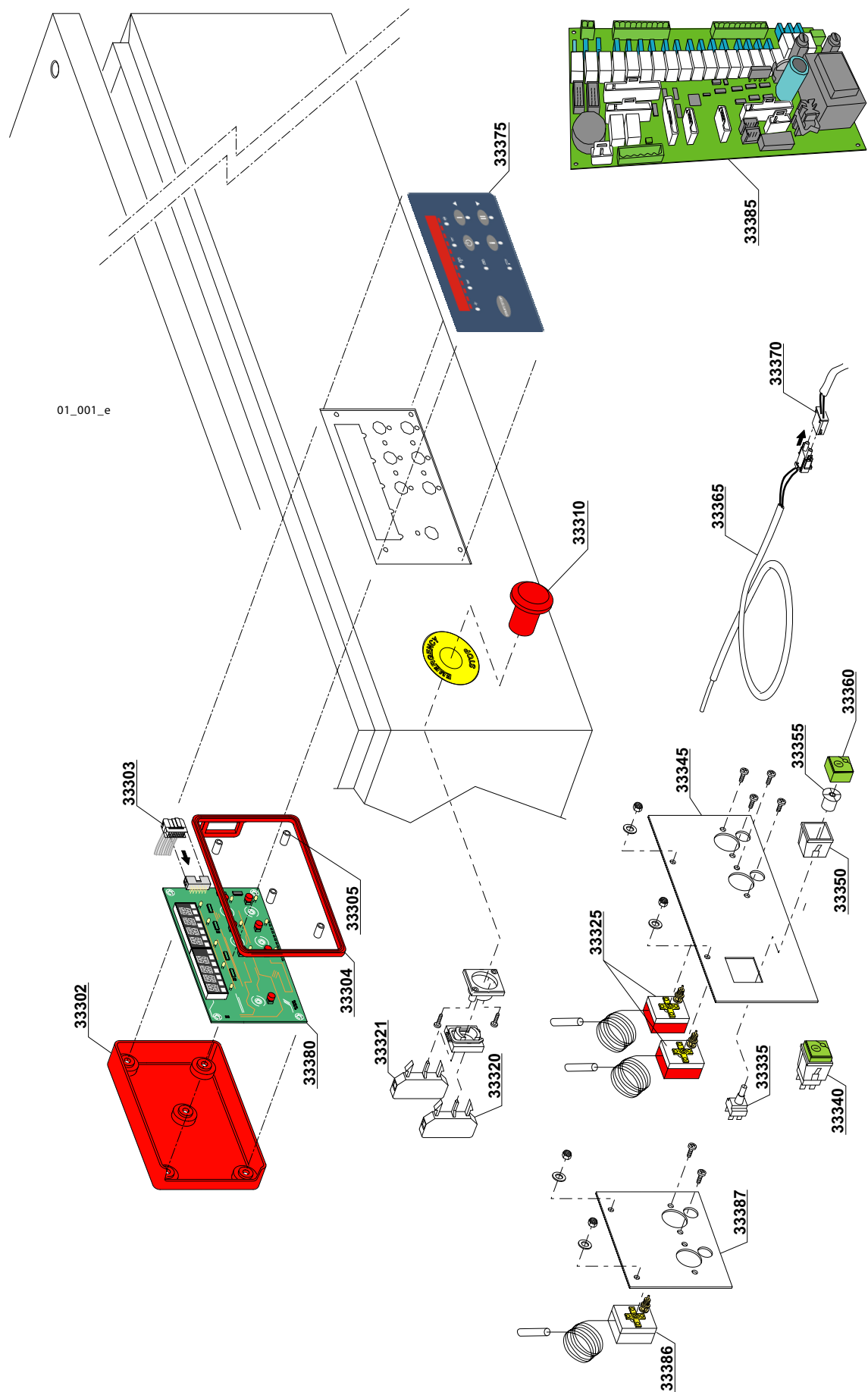
DVGW valve	45
Motorgear components	47
Washing components 3+2	49
Rinsing components	51
System components sanitization	53
Internal components	55
Boiler components	59
Conveyor parts	61
Tank insulation	63
Double skin.....	65
Booster pump.....	67
Dispensers SDN-3	69
Angle loading table 90°	71
Baskets	73
Accessory	75

1.1 Voltage codes

Volt	Voltage code
A	3/N/PE~380-400V 50-60Hz
D	3/PE~200-210V 50-60Hz
F	2/PE~220-240V 50-60Hz
G	3/N/PE~415V 50-60Hz
H	3/PE~220-230V 50-60Hz
K	3/PE~380-400V 50-60Hz
L	3/PE~415V 50-60Hz
M	3/PE~440V 60Hz
P	1/N/PE~220-230V 50-60Hz
R	2/PE~220-240V 50-60Hz
U	1/N/PE~240V 50-60Hz
V	3/PE~240V 50-60Hz
W	1/N/PE~100-110V 50-60Hz

1.2 Product codes

Product code	Full name
Model codes	
e	ELECTRONICAL SWITCHES
uw	LOWER AND UPPER WASHER
Type codes	
200E	200E
Accessory codes	
hr	HEAT RECOVERY - HR5 [KHR5]
sc8	STEAM CONDENSER - SC5 [KSC5]
d8	DRYER - DR24 [KDR24]
d8	DRYER - DRA924 [KDRA924]
dvgw	DVGW VALVE SYSTEM
ti	TANK INSULATION
ds	DOUBLE SKIN
bp	BOOSTER PUMP
sdn3	DISPENSER SYSTEM SDN-3
sdn3	SANITIZATION SYSTEM
98	ANGLE LOADING TABLE - LC 98[K-25]



ID	P-code	SN from	SN to	Mod.	Acces.	Volt	Description
Module:Control Panel ELECTRONIC							
33302	11600931/A		-	e,uw			Protective cover for board
33303	50651		-	e,uw			Plug
33304	11600931/B		-	e,uw			Gasket for protective cover
33305	50561		-	e,uw			Board spacer
33310	3002050		-	e,uw			Emergency button
33320	3002056		-	e,uw			INC contact
33321	3002054		-	e,uw			INO contact
33325	2000430		-	e,uw			Safety thermostat
33335	15812		-	e,uw			Starter electric component
33340	15849		-	e,uw			Switch assembly (PM2)
33345	3009114		-	e,uw			Assembly plate
33350	15815		-	e,uw			Support square single
33355	15824		-	e,uw			Green-orange cam
33360	15874		-	e,uw			Green main switch
33365	3006165		-	e,uw			Thermostat probe
33370	3006170		-	e,uw			Extend probe thermostat
33375	391102		-	e,uw			Silkscreen processed grill membrane (D)
33375	391091		-	e,uw			Silkscreen processed grill membrane (K)
33375	391092		-	e,uw			Silkscreen processed grill membrane (N)
33380	11600931		-	e,uw			Electronic card
33385	3072148		-	e,uw			Main board
33386	3072158		-	e,uw			Tank safety thermostat
33387	3070350		-	e,uw			Assembly plate

Type : 200E

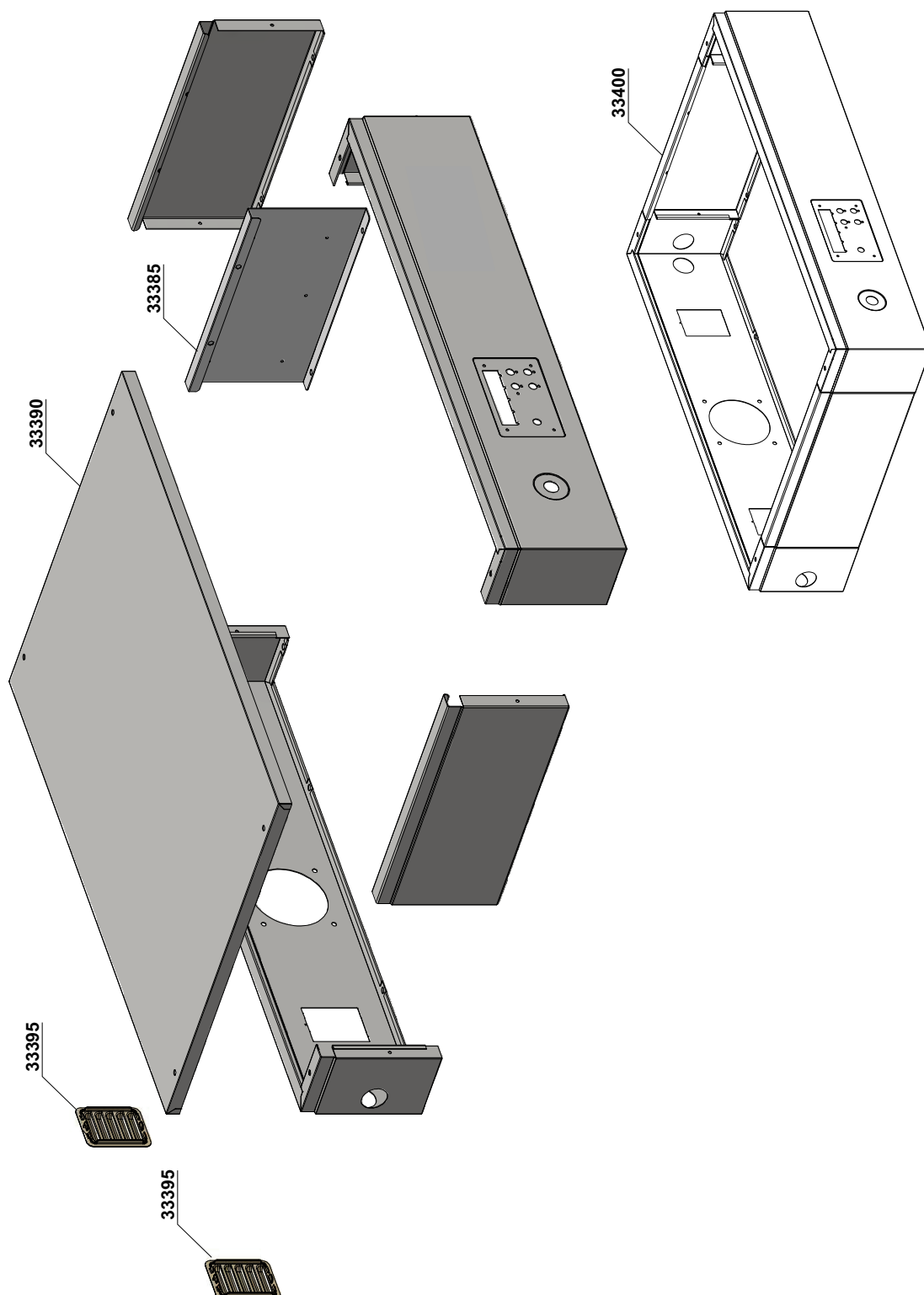
Serie: RX Compact

Rev. : 0.0

S/N : ----

Date: 09/2016

Note:----



01_002_e

ID	P-code	SN from	SN to	Mod.	Acces.	Volt	Description
Module:Closing panels							
33385	391122		-	e,uw			Electronic card support
33390	3070242		-	e,uw			Cover panel
33395	25046		-	e,uw			Closing with cooling fins
33400	NC		-	e,uw			Top panel assembled

Type : 200E
Serie: RX Compact
Rev. : 0.0
S/N : ----
Date: 09/2016
Note:----



ID	P-code	SN from	SN to	Mod.	Acces.	Volt	Description
Module:Electrics parts							
33405	3006093		-	e,uw			DIN guide backstop
33410	3071122		-	e,uw			2.5 mm ² (ZDK 2.5) double terminal clamp
33415	3071124		-	e,uw			Connecting bridge for terminal board
33420	3071123		-	e,uw			Clamp covering palte (ZAP/TW
33425	2000370		-	e,uw			Contactor MC9
33430	3006153		-	e,uw			Mechanical lock safety
33435	NC		-	e,uw			Motorprotector
33440	NC		-	e,uw			Automatic fuse
33445	3006060		-	e,uw			Transformer 160VA
33450	3006093		-	e,uw			DIN guide backstop
33455	3071122		-	e,uw			2.5 mm ² (ZDK 2.5) double terminal clamp
33460	3071123		-	e,uw			Clamp covering palte (ZAP/TW)
33465	3071124		-	e,uw			Connecting bridge for terminal board
33470	3006079		-	e,uw			Base for relay
33475	3071140		-	e,uw			Relay 4C/DEV 24V 7A
33480	3071141		-	e,uw			base for relay 4C/24V 10A
33485	3006078		-	e,uw			Relay
33490	NC		-	e,uw			Fuse
33495	3006144		-	e,uw			Fuse holder covering plate
33500	3006147		-	e,uw			Clamp support fuse 5x10
33505	3006156		-	e,uw			Neutral blue clamp
33510	3006084		-	e,uw			Clamp covering plate 35mm ²
33515	3071168		-	e,uw			Terminal board
33520	2000385		-	e,uw			Contactor BF20
33525	3006080		-	e,uw			Auxiliary contact LMS25

Type : 200E
 Serie: RX Compact
 Rev. : 0.0
 S/N : ----
 Date: 09/2016
 Note:----



ID	P-code	SN from	SN to	Mod.	Acces.	Volt	Description
Module:General parts							
4205	3009664		-	e,uw			Spring support
4210	3004012		-	e,uw			Spring holder
4225	3009555		-	e,uw			Spring clamping plate
4230	3004010		-	e,uw			Door spring BBSR 21
4235	3009269		-	e,uw			Door stop
4240	391040		-	e,uw			Door assembly
4245	75304		-	e,uw			Door guide
4265	391022		-	e,uw			Rear panel
4270	391021		-	e,uw			Lateral pannel
4271	391018		-	e,uw			Right lateral panel
4276	391019		-	e,uw			Left lateral panel
4280	391020		-	e,uw			Front cover
4290	3003112		-	e,uw			Door microswitch
4295	80116		-	e,uw			Foot
4295	80116/M		-	e,uw			"Marine"Foot
4300	391023		-	e,uw			Side panel
4305	13329		-	e,uw			Fairlead
4310	391039		-	e,uw			Slideways
4315	3009907		-	e,uw			Spring assembly BBSR 21
4320	3000315		-	e,uw			Hook door
4325	3000314		-	e,uw			Hook support
4330	391050		-	e,uw			Splash guard

Type : 200E

Serie: RX Compact

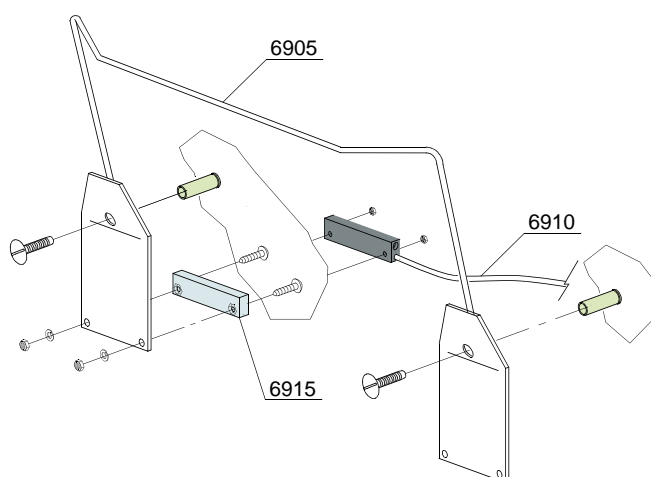
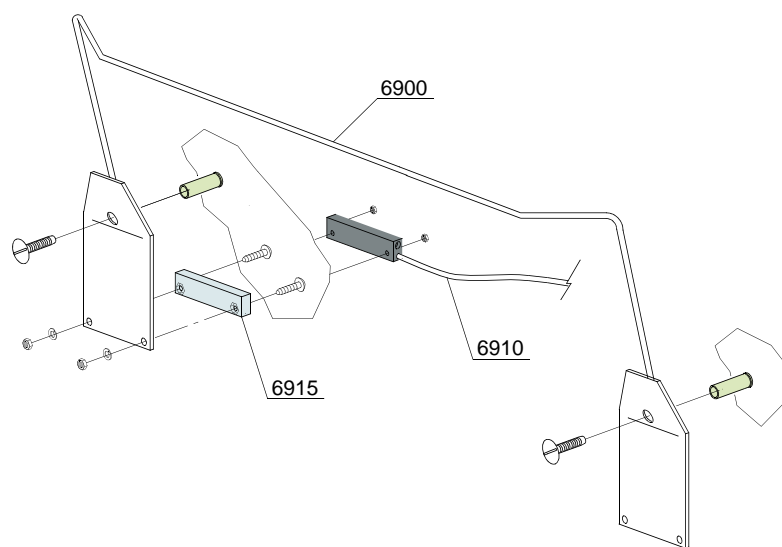
Rev. : 0.0

S/N : ----

Date: 09/2016

Note:----

03_102be



ID	P-code	SN from	SN to	Mod.	Acces.	Volt	Description
Module:Economizer components							
6900	391044		-	e,uw			Rack switch wash
6905	391047		-	e,uw			Rack switch rinsing
6910	10778		-	e,uw			Door microswitch
6915	391046		-	e,uw			Magnet

Type : 200E

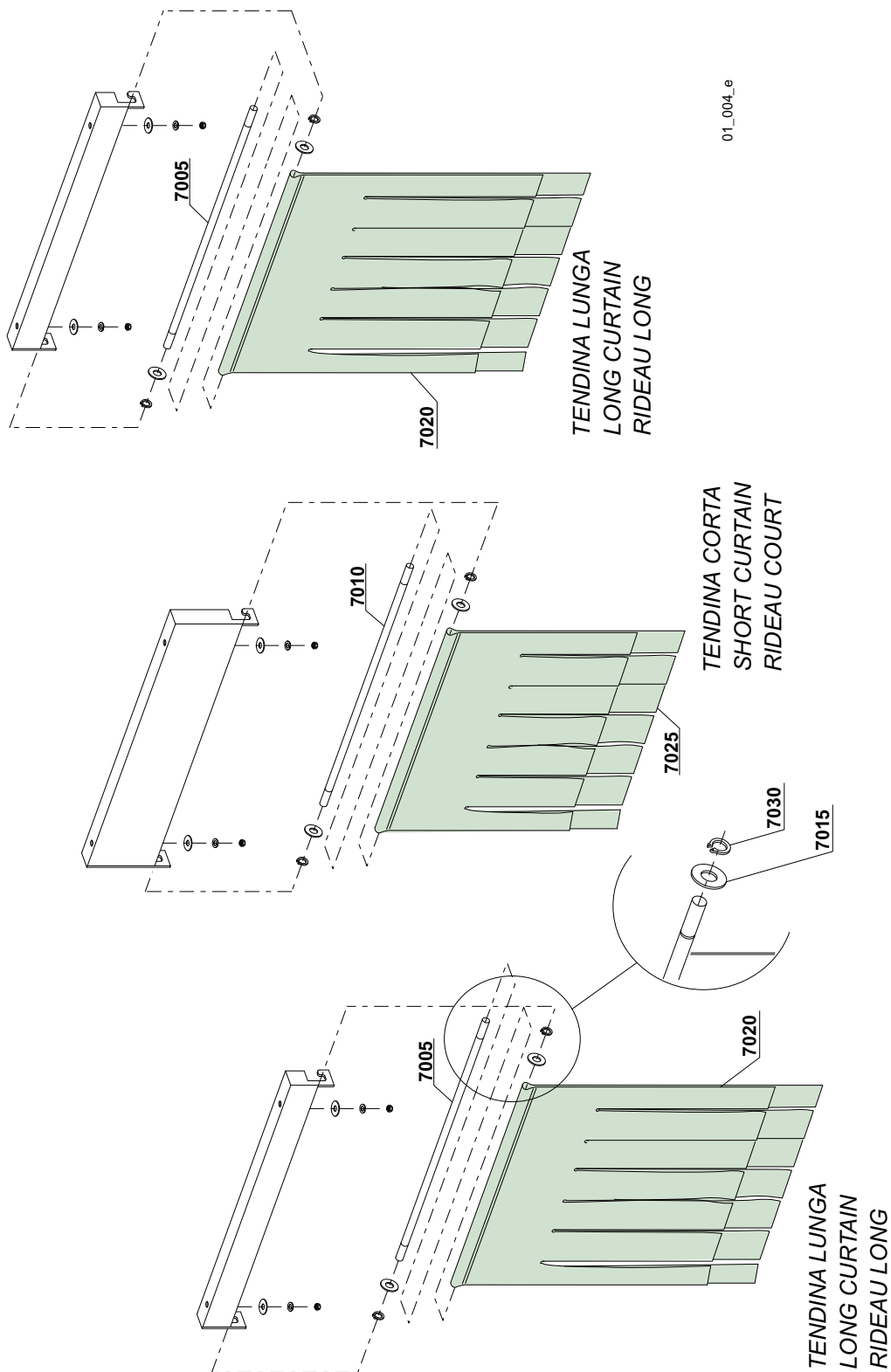
Serie: RX Compact

Rev. : 0.0

S/N : ----

Date: 09/2016

Note:----



ID	P-code	SN from	SN to	Mod.	Acces.	Volt	Description
Module: Curtains group components							
7005	3004052		-	e,uw			Curtain rod long
7010	391038		-	e,uw			Curtain inner rod short
7015	11185		-	e,uw			Flat washer 8x16 inox
7020	3071072		-	e,uw			Curtain long
7025	391037		-	e,uw			Curtain short
7030	11815		-	e,uw			Sege Ø 8 inox

Type : 200E

Serie: RX Compact

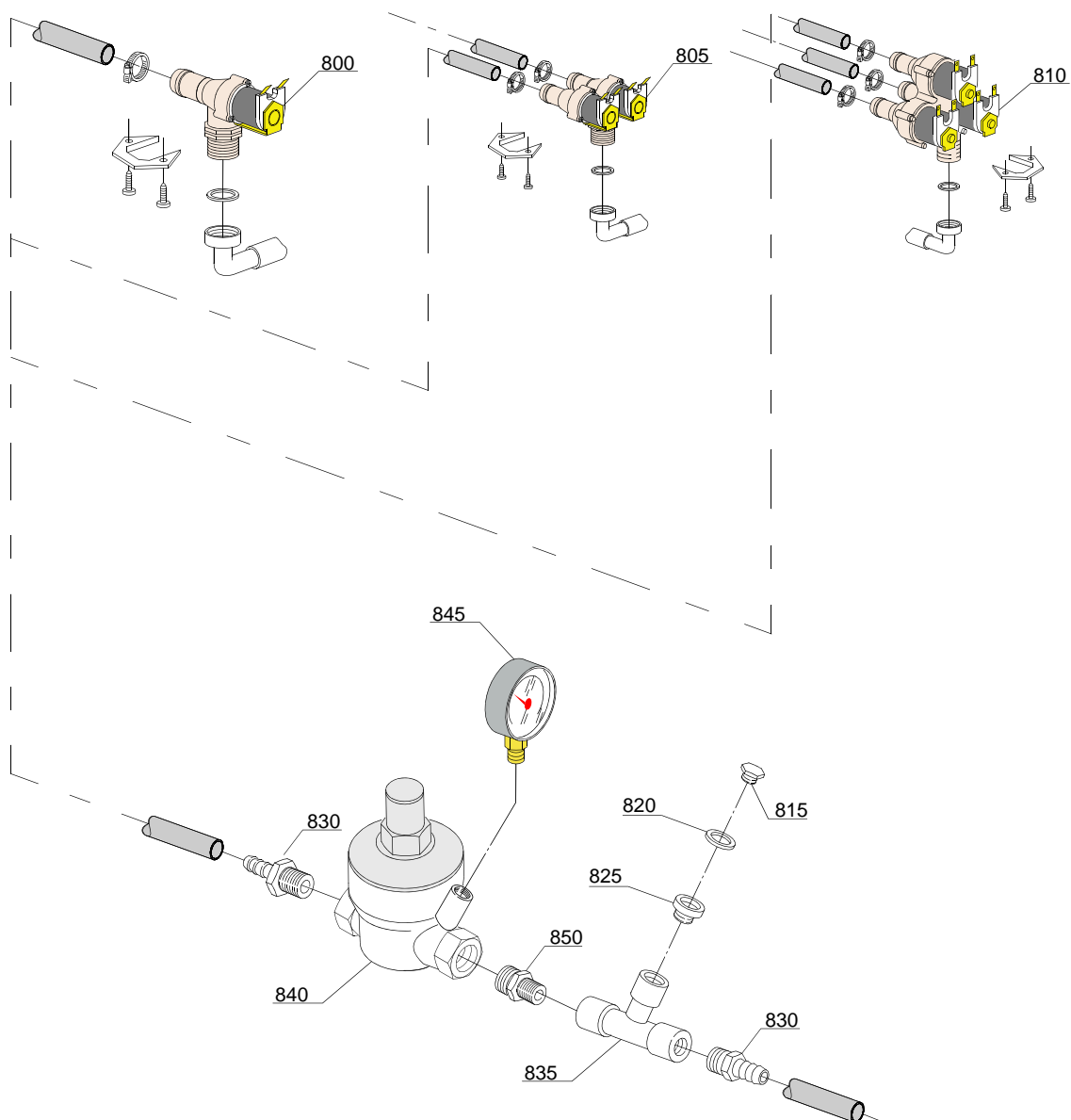
Rev. : 0.0

S/N : ----

Date: 09/2016

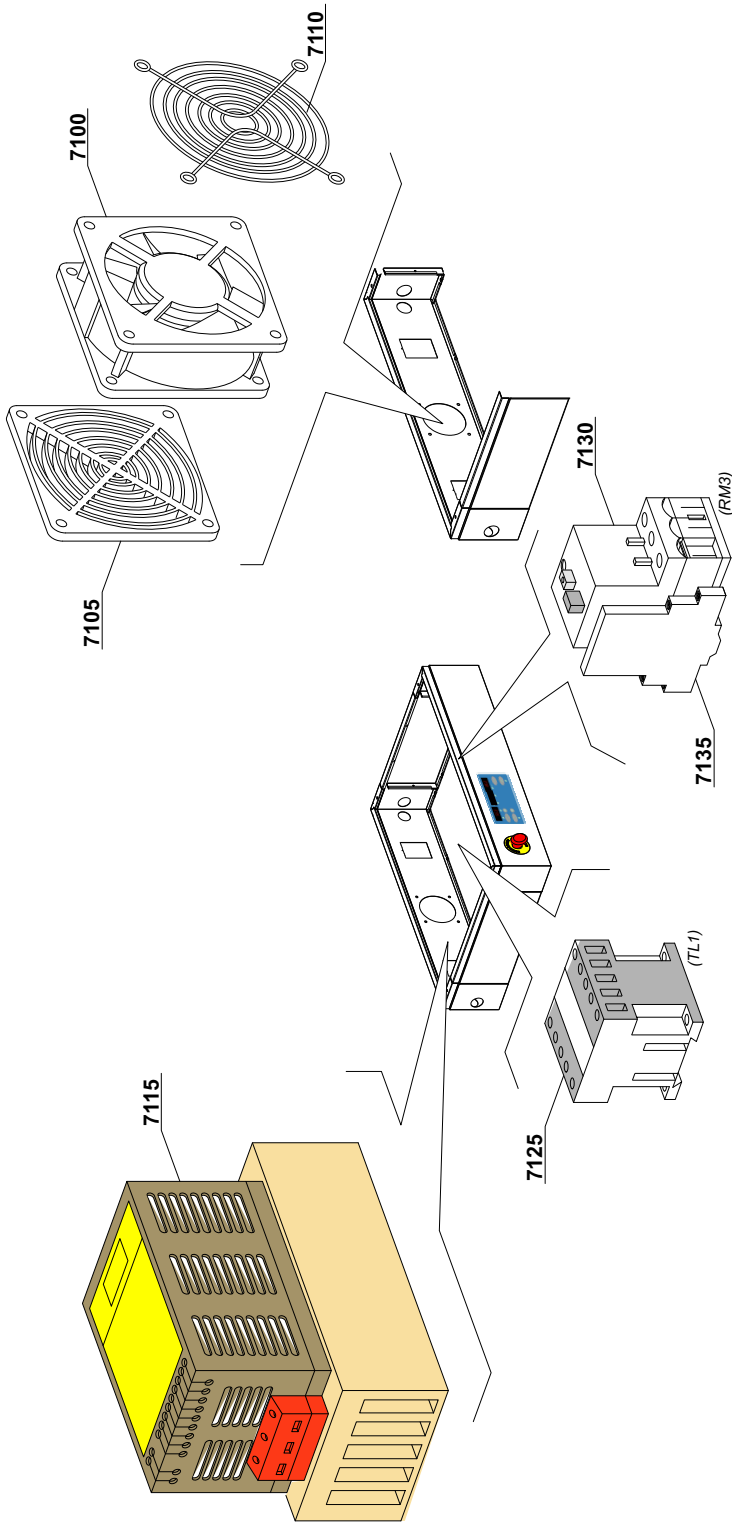
Note:----

05_003_e



ID	P-code	SN from	SN to	Mod.	Acces.	Volt	Description
Module:Solenoid valve group							
800	2000093		-	e,uw			Single solenoid valve - Ø14 3/4"
805	2000094		-	e,uw			Double solenoid valve - Ø14 3/4"
810	2000095		-	e,uw			Triple solenoid valve - Ø14 3/4"
815	12002		-	e,uw			Plug
820	13309		-	e,uw			Gasket 14x10x1,5
825	12032		-	e,uw			Rduction nipples
830	12005		-	e,uw			Hose holder
835	12008		-	e,uw			Connection "T"
840	391025		-	e,uw			Pressure reduction valve
845	2000244		-	e,uw			Pressure reduction gauge
850	12033		-	e,uw			1/4M - 1/2 Reduction nipples

Type : 200E
Serie: RX Compact
Rev. : 0.0
S/N : ----
Date: 09/2016
Note:----



01_005_e

ID	P-code	SN from	SN to	Mod.	Acces.	Volt	Description
Module: Inverter							
7100	3000118		-	e,uw			Impeller fan
7105	3000118/A		-	e,uw			Filter
7110	3000118/B		-	e,uw			Grid
7115	3000117		-	e,uw			Inverter 0,37kW
7125	2000370		-	e,uw			Contactor MC9
7130	2000400		-	e,uw			Motorprotector 4-6,3A
7135	3006080		-	e,uw			Auxiliary contact LMS25

Type : 200E

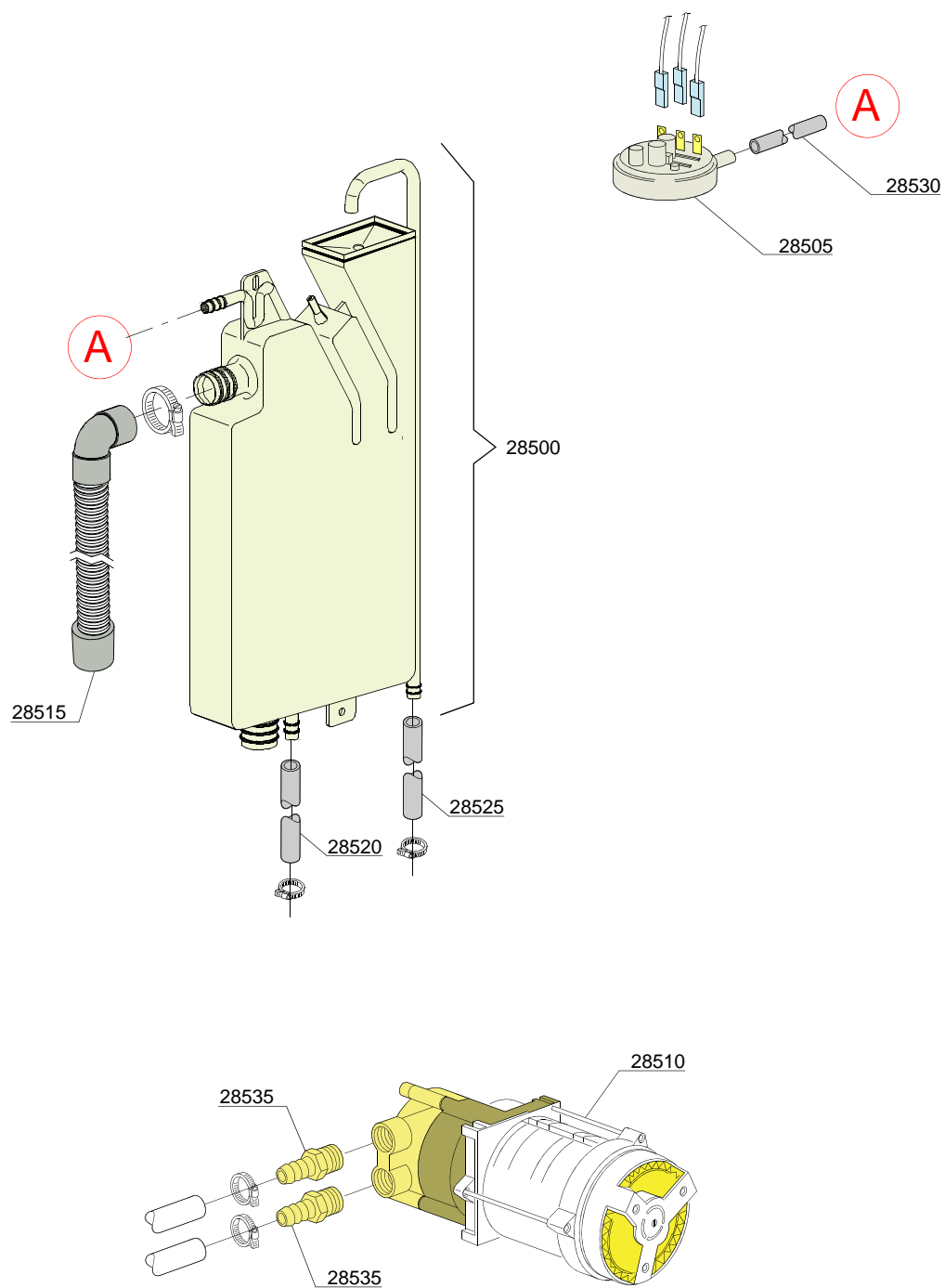
Serie: RX Compact

Rev. : 0.0

S/N : ----

Date: 09/2016

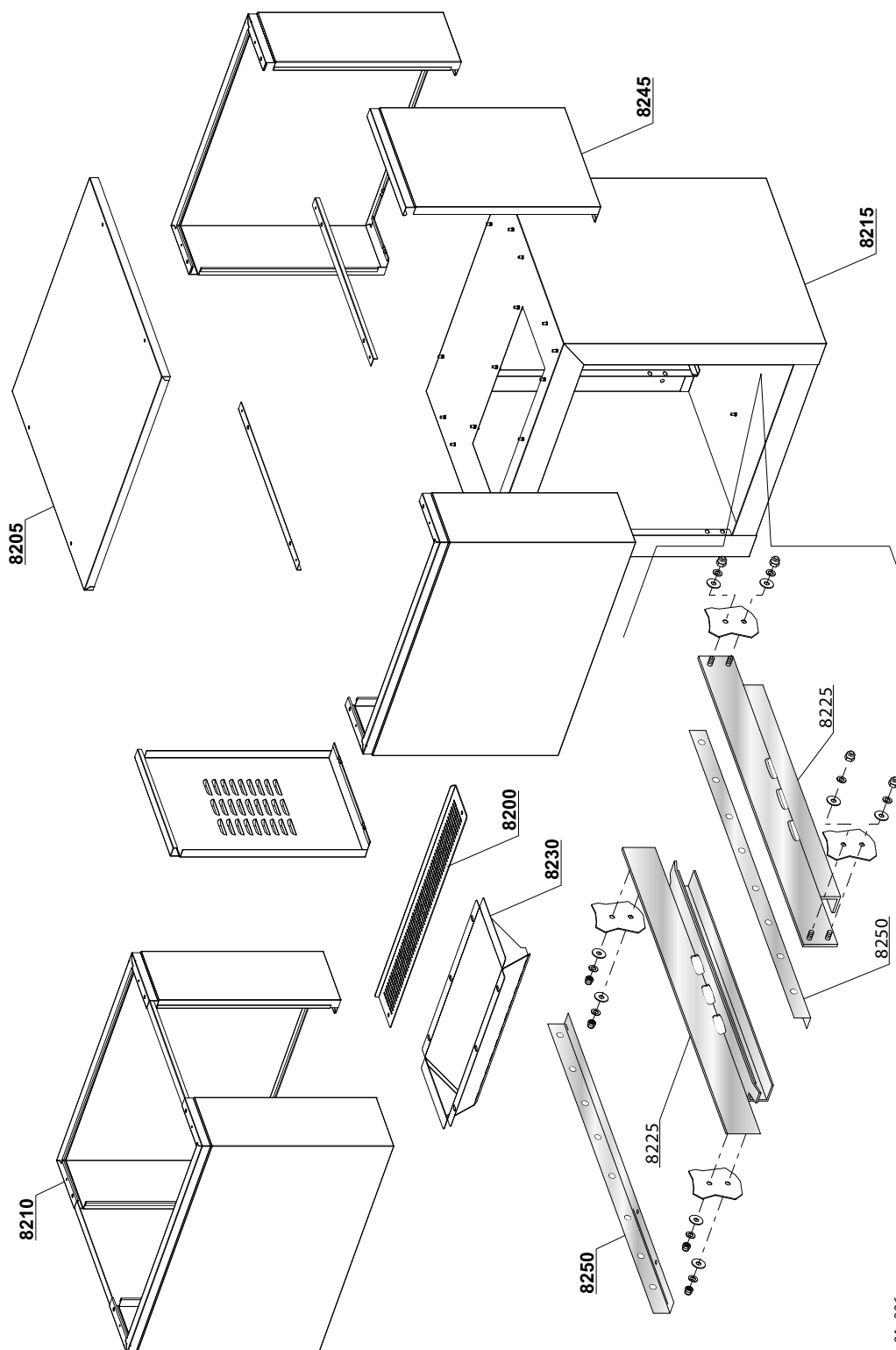
Note:----



06_004ze

ID	P-code	SN from	SN to	Mod.	Acces.	Volt	Description
Module:Break Tank							
28500	15735		-	e,uw			2,4 lt Break tank assembly
28505	10706/A		-	e,uw			47-27 pressure switch
28510	15100/QO		-	e,uw			Rinsing pump 400VaC 3 50Hz - body pumps in brass
28515	15721		-	e,uw			BT long pipe L=1070
28515	15722		-	e,uw			BT middle pipe L=920
28515	15723		-	e,uw			BT small pipe L=690
28515	25031		-	e,uw			90° BT small pipe
28520	2907350		-	e,uw			12x20 EPDM rubber hose
28525	2907352		-	e,uw			PVC WRAS rubber hose
28530	14508		-	e,uw			4,5x9 EPDM rubber hose (minimum 2 mt)
28535	10221311		-	e,uw			Rubber holder Ø 12 3/8G

Type : 200E
Serie: RX Compact
Rev. : 0.0
S/N : ----
Date: 09/2016
Note:----



01_006_e

ID	P-code	SN from	SN to	Mod.	Acces.	Volt	Description
Module:Dryer DR24 [KDR24] - part 1							
8200	392021		-	e,uw			Protection
8205	391114		-	e,uw			Cover panel
8210	NC		-	e,uw			Complete body
8215	391124		-	e,uw			Dryer module
8225	392019		-	e,uw			Back / front slideways
8230	391135		-	e,uw			Flow conveyor
8245	391108		-	e,uw			Dryer carter lockup
8250	391059		-	e,uw			Mobile chassis

Type : 200E

Serie: RX Compact

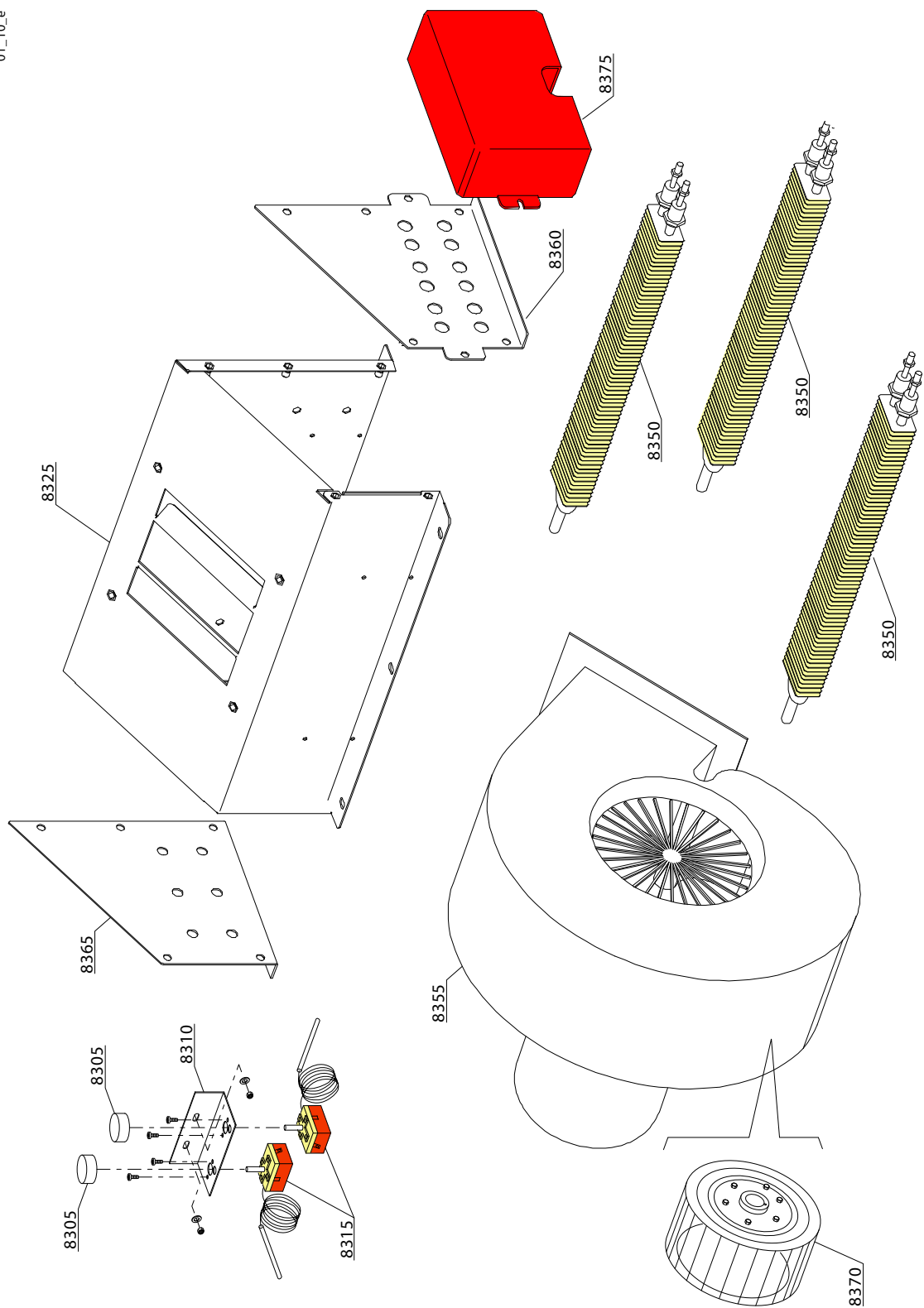
Rev. : 0.0

S/N : ----

Date: 09/2016

Note:----

01_10_e



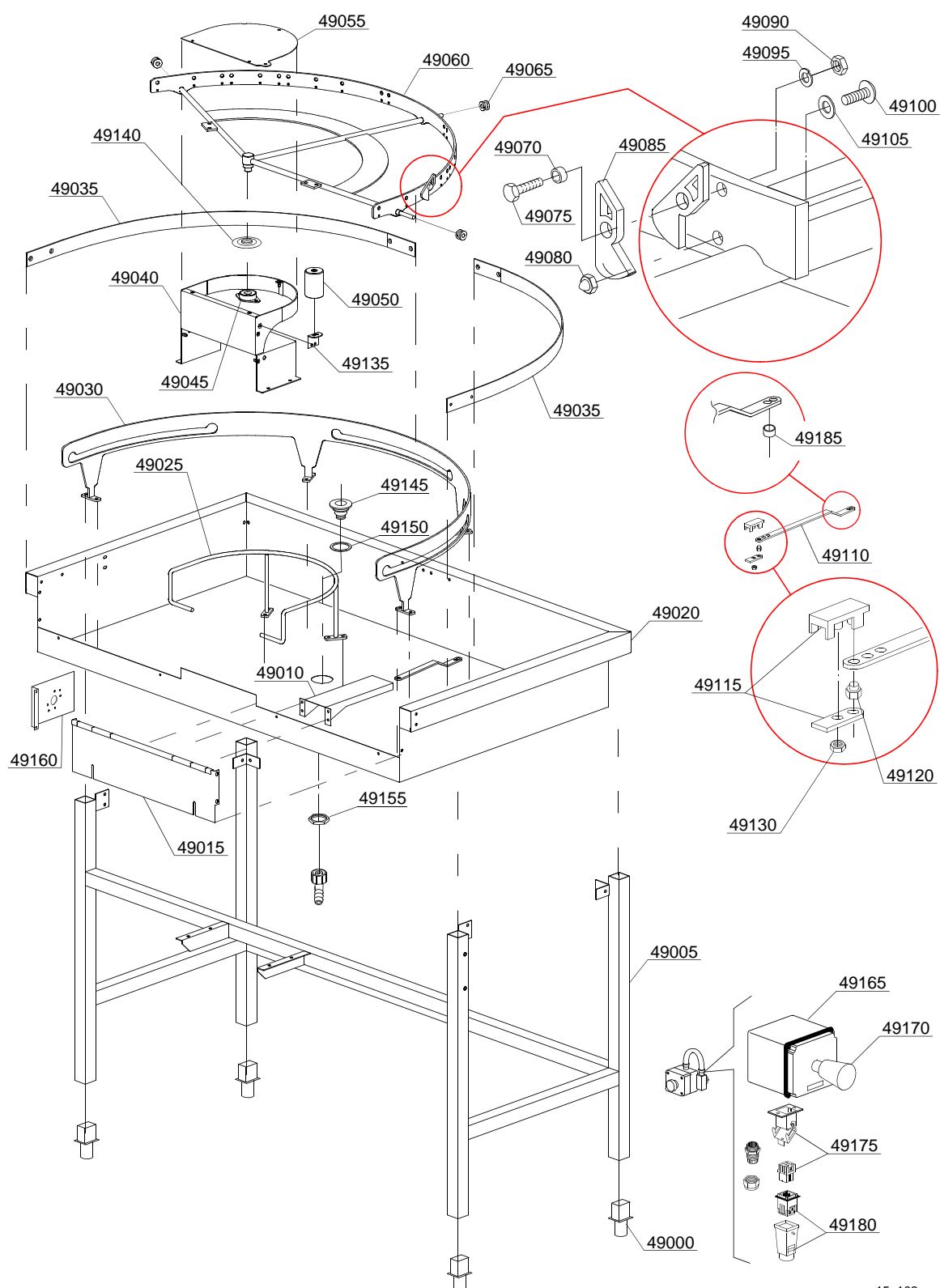
ID	P-code	SN from	SN to	Mod.	Acces.	Volt	Description
Module:DryerDR24 [KDR24] - parte 2							
8305	15105/C		-	e,uw			0-300°C Thermostat knob
8310	3009104		-	e,uw			Thermostat support
8315	10707/3		-	e,uw			Thermostat with shaft 0 - 300°
8325	3009674/A		-	e,uw			Drying Carter
8350	3071075		-	e,uw			Drying heating element
8355	3000300		-	e,uw			Motorfan 0,55 kW
8355	3000313		-	e,uw			Motorfan 0,55 kW 60-Hz
8355	3003118		-	e,uw			Motorfan 0,75 kW
8360	3070142		-	e,uw			Right side
8365	3070177		-	e,uw			Left side
8370	3000308		-	e,uw			Pump rotor
8375	3071078		-	e,uw			Heating element cover

Type : 200E
Serie: RX Compact
Rev. : 0.0
S/N : ----
Date: 09/2016
Note:----

[illegible]

ID	P-code	SN from	SN to	Mod.	Acces.	Volt	Description
Module:Mecanized curve 90° - LC 77/2[KM22]							
48400	3000352		-	e,uw			Adjustable food
48405	3000260		-	e,uw			Flange
48410	3004161		-	e,uw			Protection disk
48415	3063006		-	e,uw			Center transport
48420	3063002		-	e,uw			Inside support basket
48425	3063003		-	e,uw			External support basket
48430	3063005		-	e,uw			Center support guide assembly
48435	3003060		-	e,uw			Spacer
48440	11128		-	e,uw			M10x25 TE inox screw
48445	11707		-	e,uw			M5 inox nut
48450	3063009		-	e,uw			Inox Clip
48455	11609		-	e,uw			M8 inox washer
48460	11719		-	e,uw			M10 inox nut
48465	11197		-	e,uw			M5x10 inox screw
48470	11608		-	e,uw			M5 inox washer
48475	3063008		-	e,uw			Axis machine coupling
48480	3063007		-	e,uw			Wheel
48490	3063010		-	e,uw			Axle machine coupling lock nut
48495	3063004		-	e,uw			Machine connectin rod
48500	3063001		-	e,uw			Mecanized curve chassis
48505	3063000		-	e,uw			Mecanized curve base
48510	391080		-	e,uw			Metal flap for air circulation
48515	10600206		-	e,uw			Teflon ogive
48520	3003024		-	e,uw			Teflon washer
48525	3063016		-	e,uw			Closing and protection section
48530	3003158		-	e,uw			Spacer

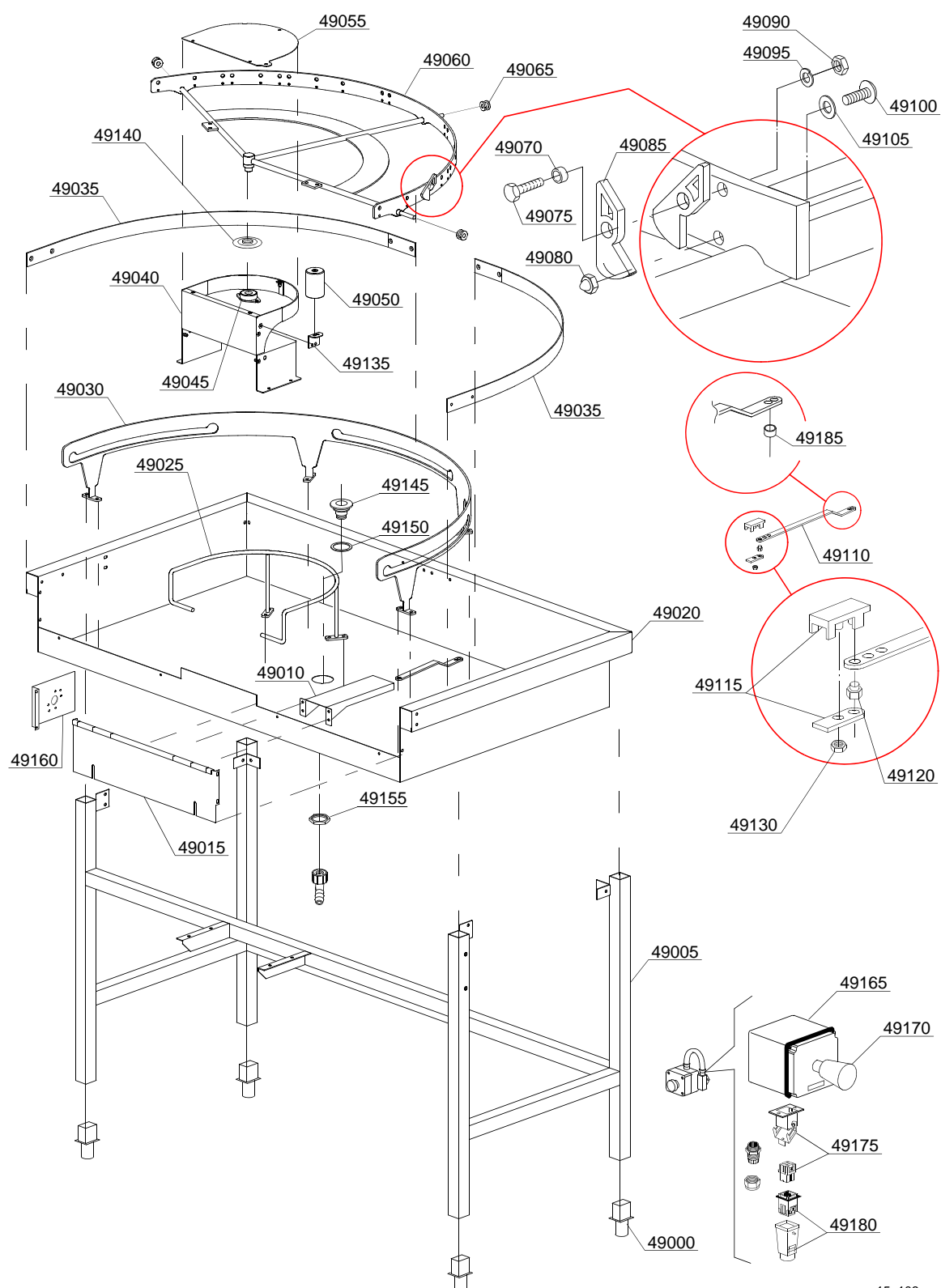
Type : 200E
 Serie: RX Compact
 Rev. : 0.0
 S/N : ----
 Date: 09/2016
 Note:----



15_103_e

ID	P-code	SN from	SN to	Mod.	Acces.	Volt	Description
Module:Mecanized curve 180° - LC 77/3[KM23]							
49000	3000252		-	e,uw			Adjustable food
49005	3003133		-	e,uw			Chassis
49010	3009717		-	e,uw			Guard
49015	3009718		-	e,uw			Side panel to hook the machine
49020	3009714		-	e,uw			Tank
49025	3063011		-	e,uw			Basket side round assembly
49030	3063013		-	e,uw			Guide assembly
49035	3063014		-	e,uw			External basket slide
49040	3009713		-	e,uw			Support with basket slide
49045	3000260		-	e,uw			Flange
49050	3000262		-	e,uw			Embossed roller
49055	3009715		-	e,uw			Cover for the support with basket slide
49060	3063012		-	e,uw			Central assembly
49065	3063007		-	e,uw			External wheel
49070	3003025		-	e,uw			11,7x10x6 Bush
49075	11109		-	e,uw			M10x25 inox screw
49080	11707		-	e,uw			M5 inox nut
49085	3063009		-	e,uw			Inox Clip
49090	11179		-	e,uw			M10 inox nut
49095	11609		-	e,uw			M8 inox washer
49100	11197		-	e,uw			M5x10 TCB inox screw
49105	11608		-	e,uw			M5 inox washer
49110	3063015		-	e,uw			Machine connectin rod
49115	3063008		-	e,uw			Axis machine coupling
49120	3063010		-	e,uw			Axle machine coupling lock nut
49130	11718		-	e,uw			M8 inox nut
49135	3009716		-	e,uw			Stiffening square
49140	3004161		-	e,uw			Protection disk

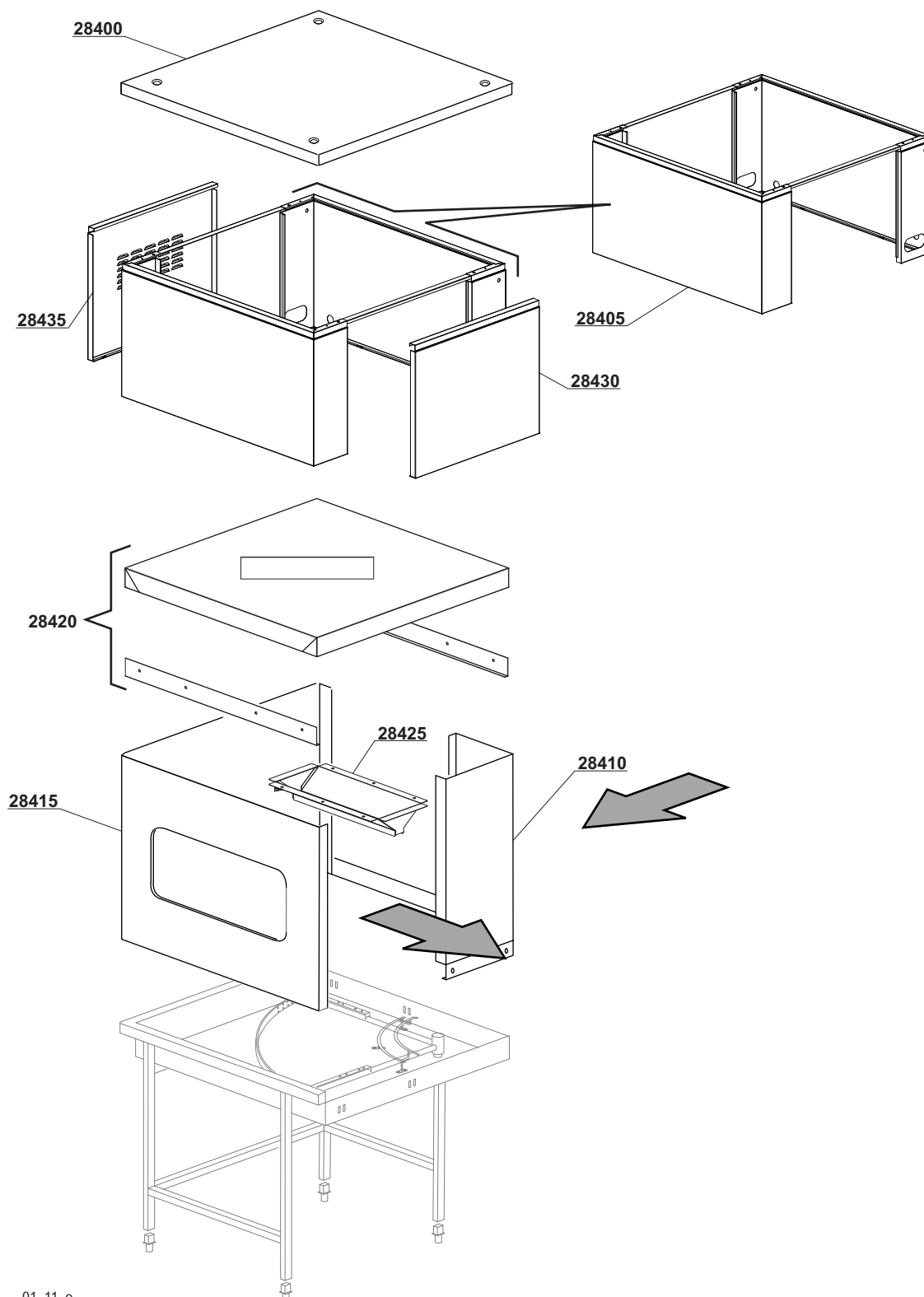
Type : 200E
 Serie: RX Compact
 Rev. : 0.0
 S/N : ----
 Date: 09/2016
 Note:----



15_103_e

ID	P-code	SN from	SN to	Mod.	Acces.	Volt	Description
Module:Mecanized curve 180° - LC 77/3[KM23]							
49145	10200113		-	e,uw			Floor drain
49150	10200173/A		-	e,uw			75x58x2 gasket
49155	10200114		-	e,uw			Drain floor nut
49160	3009393		-	e,uw			Emergency button support
49165	3000264		-	e,uw			Emergency box
49170	3000263		-	e,uw			Emergency switch
49175	3000266		-	e,uw			Male connector with support
49180	3000267		-	e,uw			Female connector with support
49185	3003158		-	e,uw			Spacer

Type : 200E
Serie: RX Compact
Rev. : 0.0
S/N : ----
Date: 09/2016
Note:----



01_11_e

ID	P-code	SN from	SN to	Mod.	Volt	Tens	Description
Module:Dryer mechanics curve 90° - DRA924 [KDRA 924]							
28400	3009710		-	e,uw			Cover panel
28405	NC		-	e,uw			Carter upper case
28410	3009709		-	e,uw			Dryer column mechanics curve
28415	3009708		-	e,uw			Dryer mechanics plating 90°
28420	3070045		-	e,uw			Complete cover
28425	391144		-	e,uw			Flow conveyor“
28430	391131		-	e,uw			Front panel
28435	391133		-	e,uw			Rear panel

Type : 200E

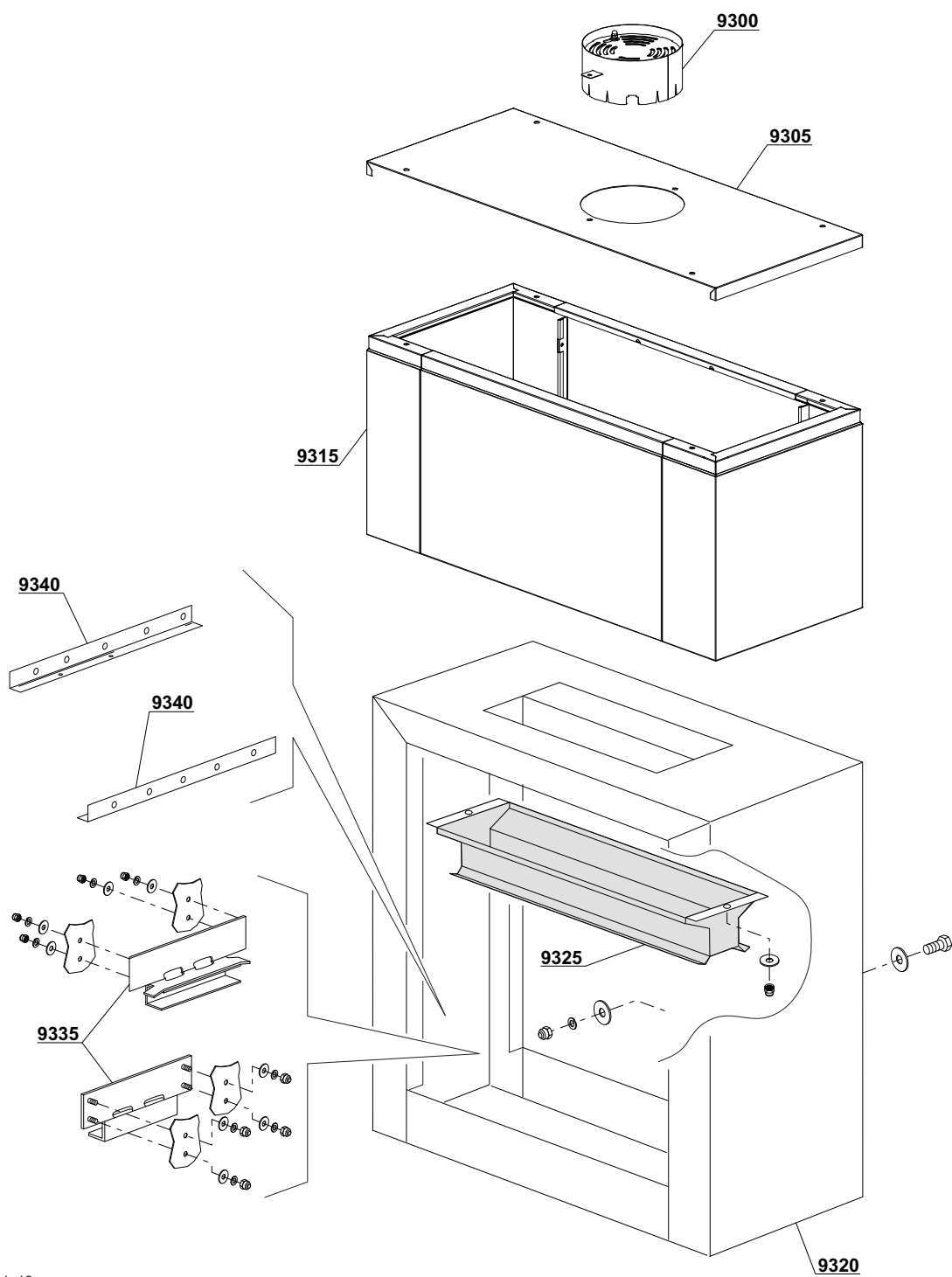
Serie: RX Compact

Rev. : 0.0

S/N : ----

Date: 09/2016

Note:----

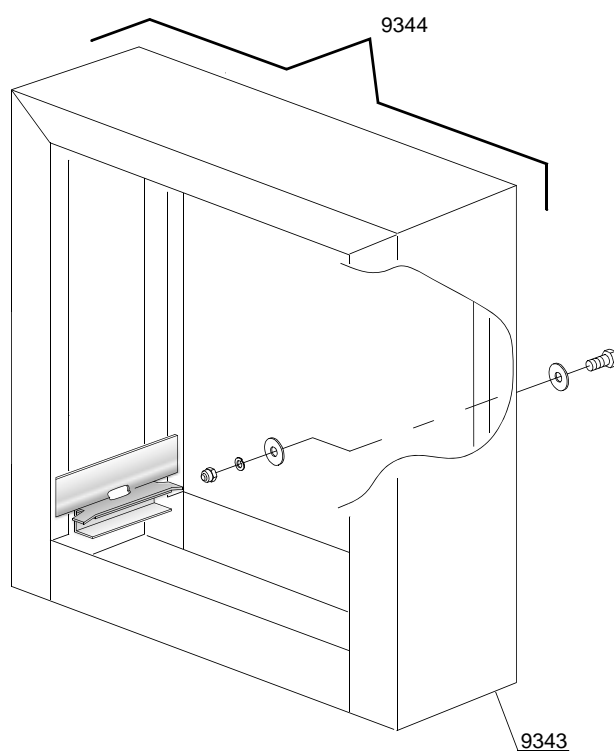


01_12_e

ID	P-code	SN from	SN to	Mod.	Acces.	Volt	Description
Module:Steam condenser / Heat recovery SC5 / HR5 [KSC5 - KHR5] - part 1							
9300	3071115		-	e,uw			Chimney
9305	3070307		-	e,uw			Cover with hole
9315	NC		-	e,uw			Complete body
9320	392030		-	e,uw			Jet top
9325	3009543		-	e,uw			Suction group
9335	392029		-	e,uw			Front / back slideways
9340	391058		-	e,uw			Mobile chassis

Type : 200E
Serie: RX Compact
Rev. : 0.0
S/N : ----
Date: 09/2016
Note:----

17_002xe



ID	P-code	SN from	SN to	Mod.	Acces.	Volt	Description
Module: Splash guard LC73 / K16AC							
9343	391050		-	e,uw			Fairlead
9344	391049		-	e,uw			Complete splash guard kit

Type : 200E

Serie: RX Compact

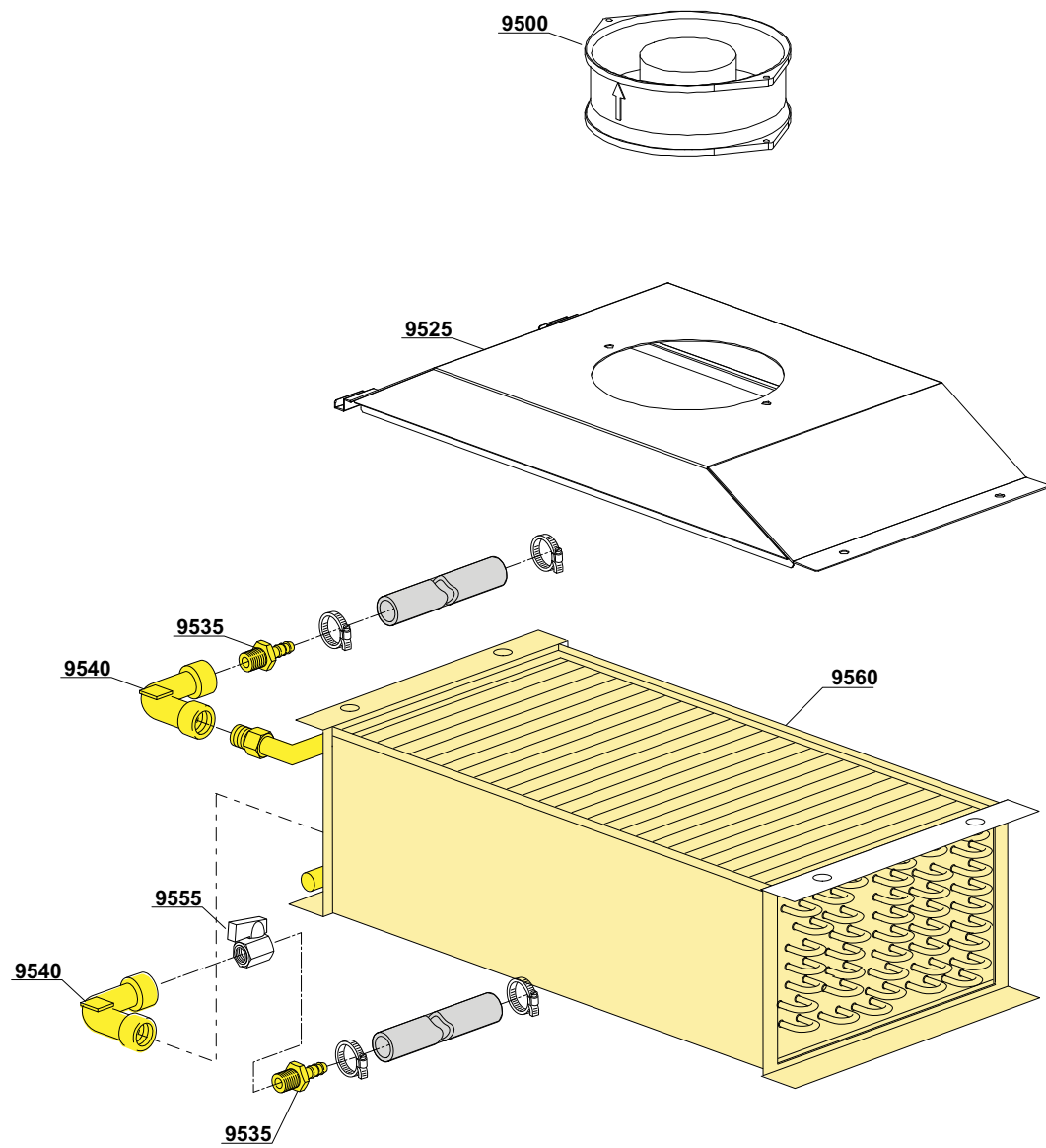
Rev. : 0.0

S/N : ----

Date: 09/2016

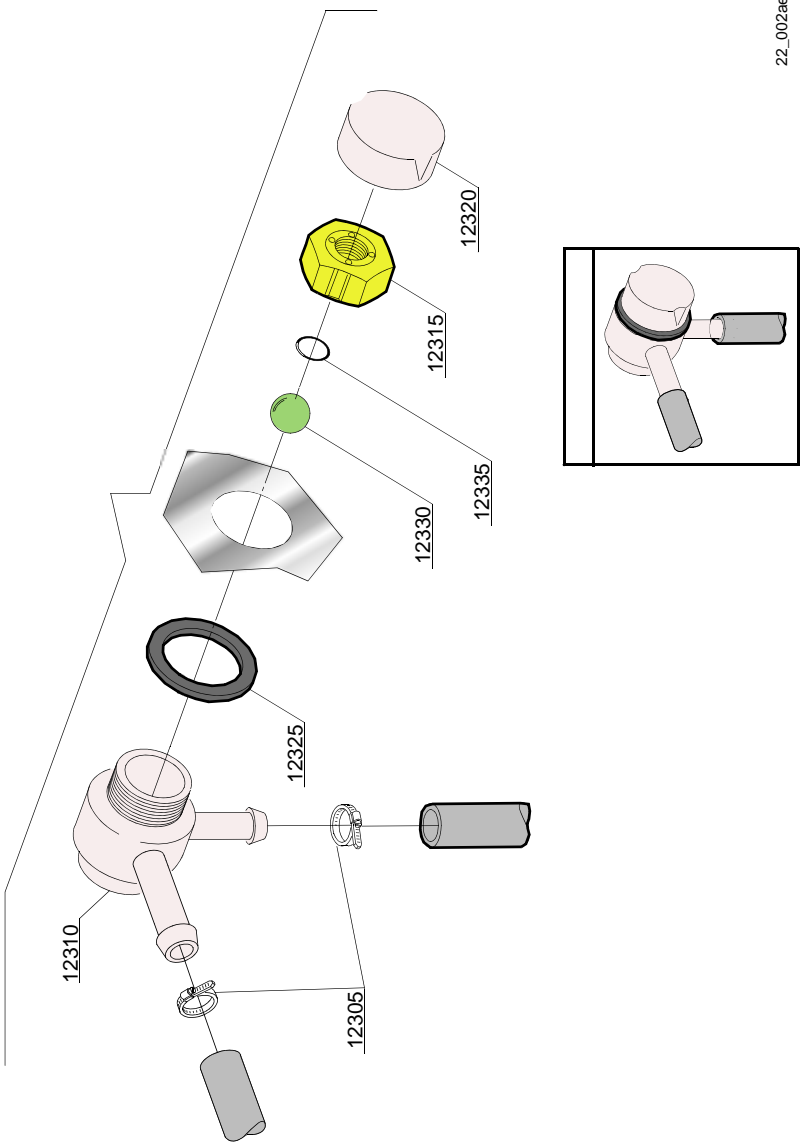
Note:----

01_14_e



ID	P-code	SN from	SN to	Mod.	Acces.	Volt	Description
Module:Steam condenser / Heat recovery SC5 / HR5 [KSC5 - KHR5] - part 2							
9500	11600715		-	e,uw			Impeller fan
9525	3070259		-	e,uw			Steam condenser base
9535	12023		-	e,uw			Hose holder
9540	3002139		-	e,uw			Elbow
9555	3002140		-	e,uw			Tap
9560	3000155		-	e,uw			Heating recovery battery

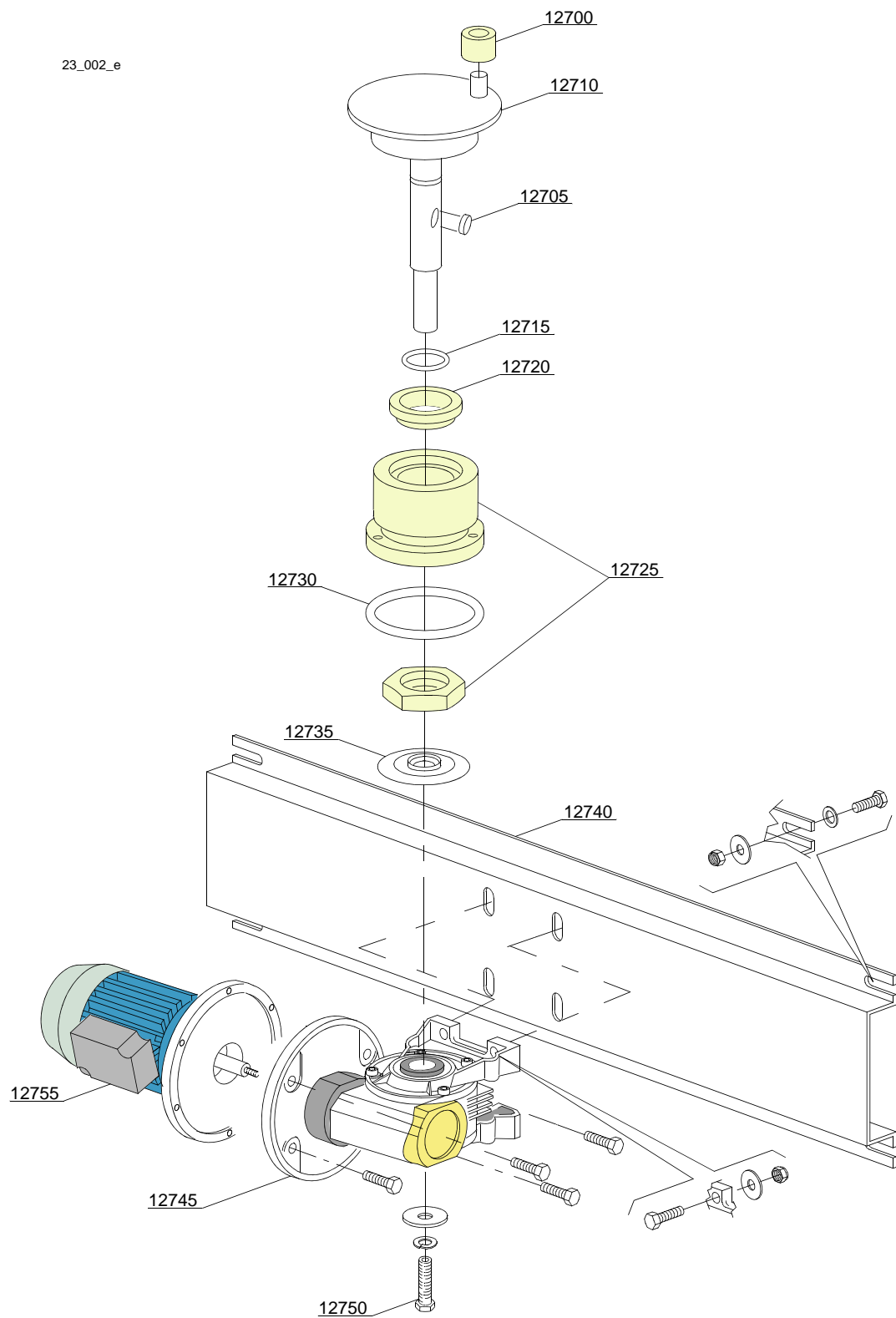
Type : 200E
Serie: RX Compact
Rev. : 0.0
S/N : ----
Date: 09/2016
Note:----



22_002ae

ID	P-code	SN from	SN to	Mod.	Acces.	Volt	Description
Module:DVGW valve							
12305	11807		-	e,uw			Clamp aisi430 12/22
12310	15280		-	e,uw			Valve body center
12315	15281		-	e,uw			Flat valve
12320	15282		-	e,uw			Flat valve cover
12325	15283		-	e,uw			Valve gasket
12330	15284		-	e,uw			Sphere
12335	15285		-	e,uw			O-ring 115 KTW

Type : 200E
Serie: RX Compact
Rev. : 0.0
S/N : ----
Date: 09/2016
Note:----



ID	P-code	SN from	SN to	Mod.	Acces.	Volt	Description
Module:Motorgear components							
12700	3003012		-	e,uw			Conveyor roller
12705	2001046		-	e,uw			Key
12710	3003116		-	e,uw			Crank shaft
12715	13023		-	e,uw			O-ring 131 (4093)
12720	13024		-	e,uw			Oil splash guard DEM 40 TC 30x42x7 with spring
12725	3004131		-	e,uw			Coupling part serie
12730	13015		-	e,uw			O-ring 160 (6225)
12735	3004161		-	e,uw			Protection disk
12740	3009060		-	e,uw			Motorgear support
12745	3000210		-	e,uw			Gear right 1:80 DX
12745	3000214		-	e,uw			Gear right 1:45 (60Hz) DX
12755	3000107/A		-	e,uw			Conveyor motor - 6/8P 440V 60Hz - reduced
12755	3000107		-	e,uw			Conveyor motor - 6/8P 400V 50Hz - reduced
12755	3000108		-	e,uw			Conveyor motor - 6/8P 230V 50Hz - reduced
12755	3000110		-	e,uw			Conveyor motor - 6/8P 400/415V 50Hz
12755	3000109		-	e,uw			Convveyor motor - 6/8P 230V 50Hz

Type : 200E

Serie: RX Compact

Rev. : 0.0

S/N : ----

Date: 09/2016

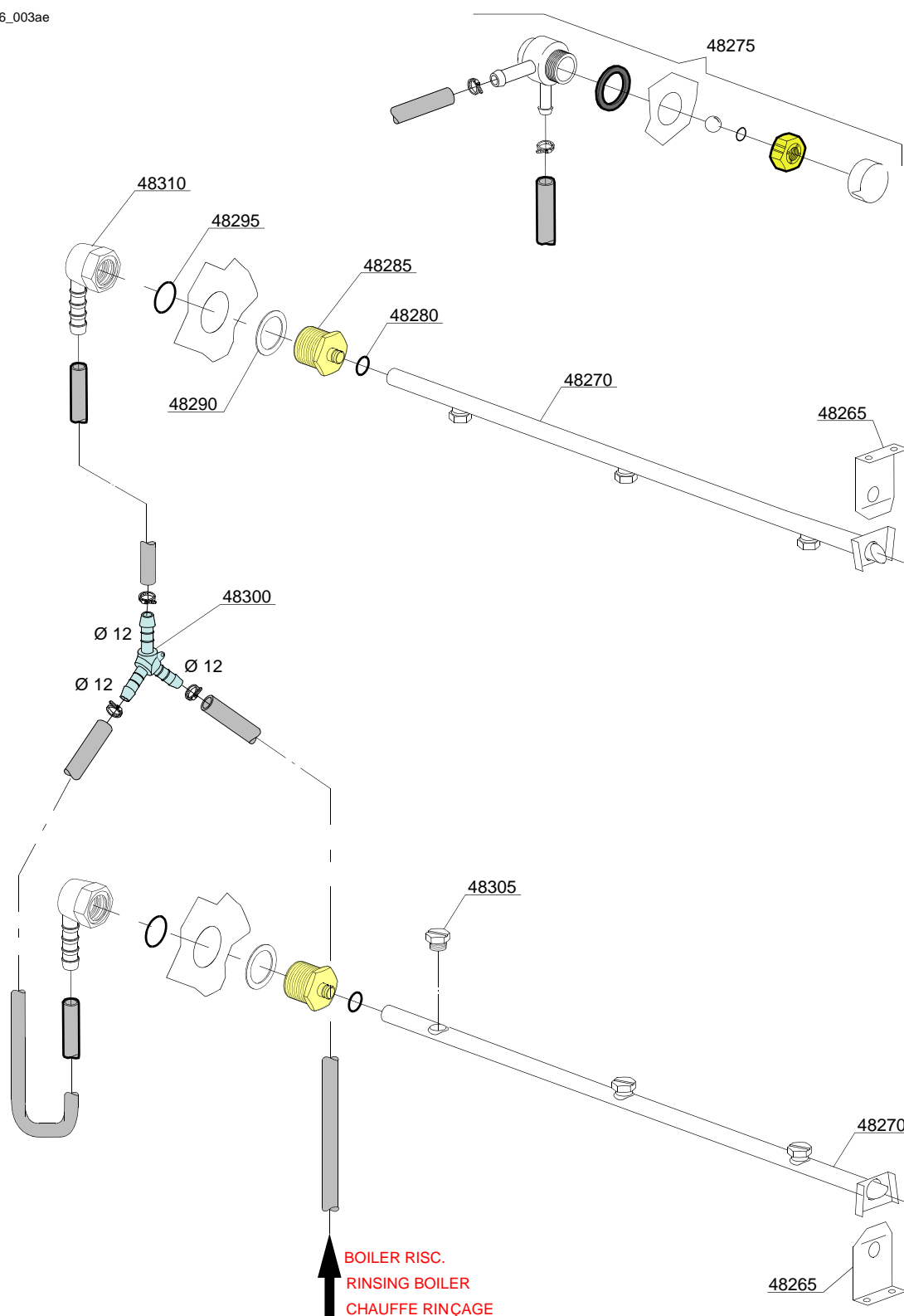
Note:----



ID	P-code	SN from	SN to	Mod.	Acces.	Volt	Description
Module: Washing components 3+2							
13800	391029		-	e,uw			Gasket
13805	391028		-	e,uw			Inferior wash ramp 3+2
13810	391042		-	e,uw			Water flow adjuster
13820	391027		-	e,uw			Upper wash ramp 3+2
13825	80304		-	e,uw			Arm plug
13830	80305		-	e,uw			Gasket
13835	3060212		-	e,uw			Elbow coupling press. Ø 42
13845	391026		-	e,uw			Elbow coupling, press.
13850	3000082		-	e,uw			Pump 0,9 kW - 220/380V 50Hz
13850	3000083		-	e,uw			Pump 0,9 kW - 220/380/415V 60Hz
13850	3000086		-	e,uw			Pump 0,9 kW - (inox) 220/380V 50Hz
13855	11600100		-	e,uw			Suction elbow coupling
13860	11600623		-	e,uw			Pump support
13865	391031		-	e,uw			Wash arm
13870	3060182		-	e,uw			Arm connection flange
13875	392050		-	e,uw			OR Gasket 3x31 NBR 70SH
13880	15080		-	e,uw			Rotating seals
13885	3000085		-	e,uw			Pump rotor 0,9 kW
13890	10200290		-	e,uw			O-ring 1225
13895	88220		-	e,uw			Scroll

Type : 200E
 Serie: RX Compact
 Rev. : 0.0
 S/N : ----
 Date: 09/2016
 Note:----

26_003ae



ID	P-code	SN from	SN to	Mod.	Acces.	Volt	Description
Module:Rinsing components							
48265	3003905		-	e,uw			Support rinsing arm
48270	391033		-	e,uw			Rinsing arm 3 nozzle
48275	9891710		-	e,uw			DVGW valve
48280	391032		-	e,uw			O-ring Gasket 108 NBR
48285	3003127		-	e,uw			Rinsing graft arm
48290	3009387		-	e,uw			12/10 Metal plain washer
48295	3003130		-	e,uw			OR gasket 123 NBR
48300	540091		-	e,uw			"Y" Axis rinsing
48305	391034		-	e,uw			Inox rinsing nozzle
48310	3003129		-	e,uw			3/8"G Rubber holder elbow

Type : 200E

Serie: RX Compact

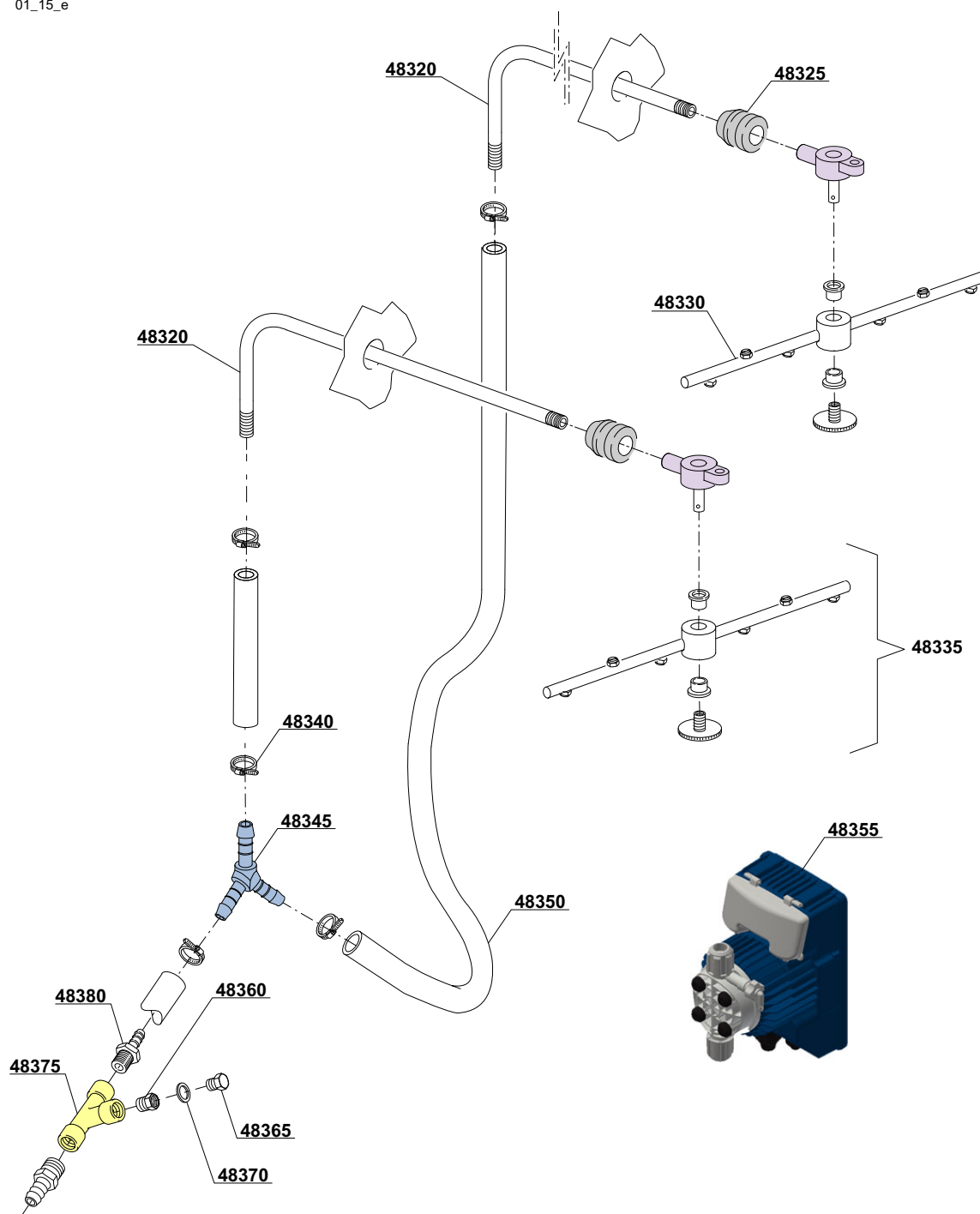
Rev. : 0.0

S/N : ----

Date: 09/2016

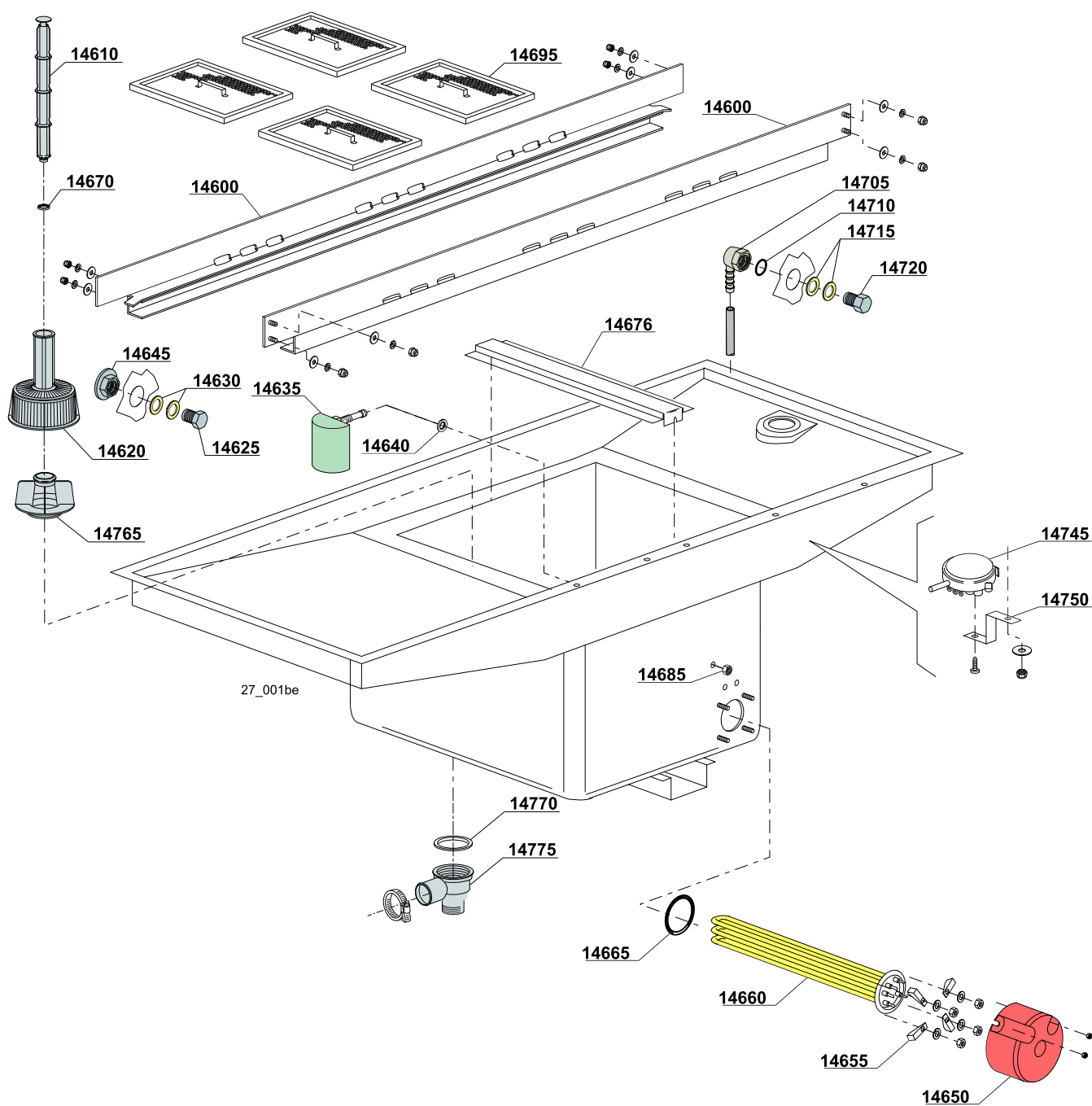
Note:----

01_15_e



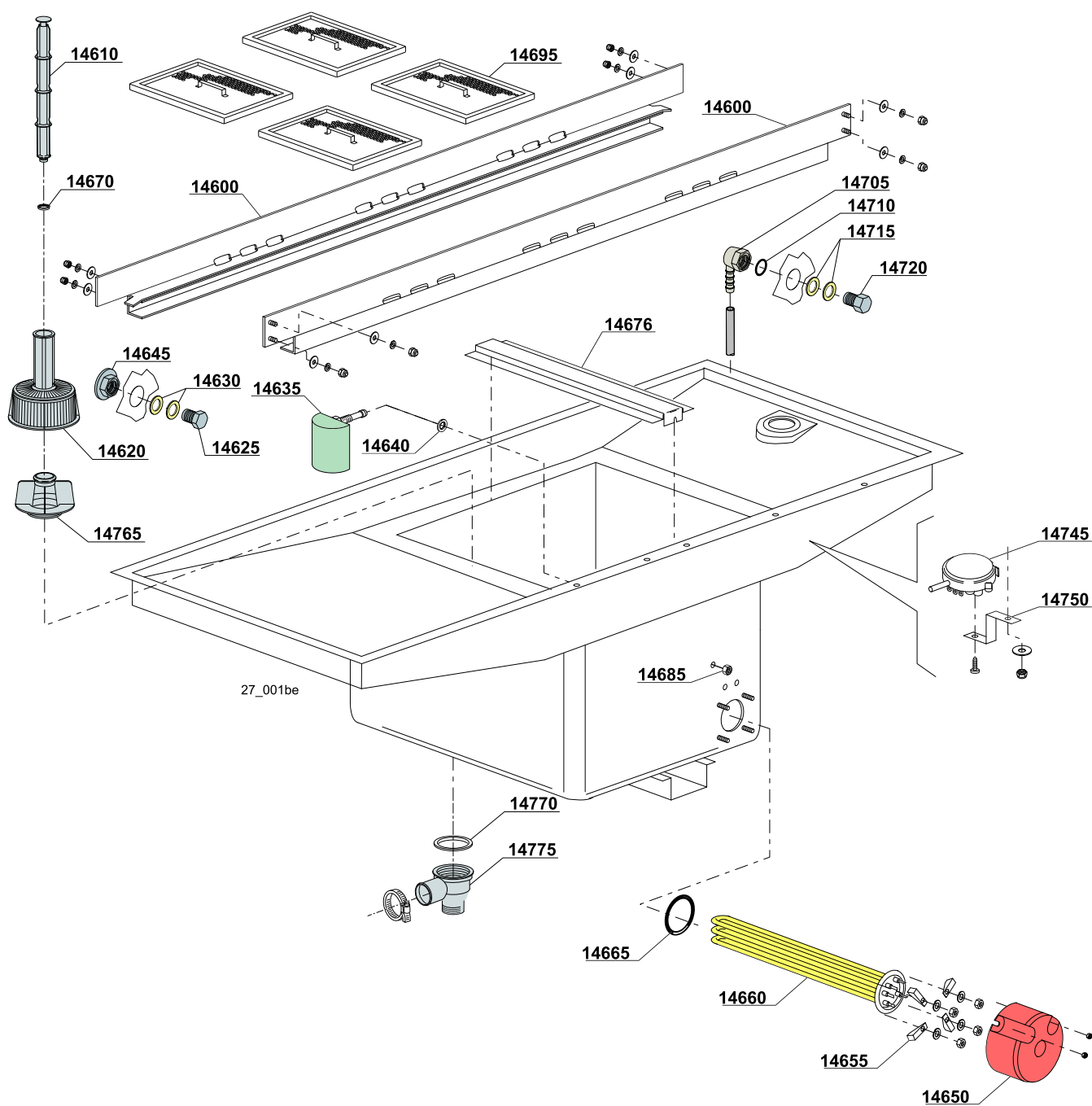
ID	P-code	SN from	SN to	Mod.	Acces.	Volt	Description
Module: System components sanitization							
48320	391065		-	e,uw			Rinse sanitization
48325	13304		-	e,uw			Pipe pas O-ring
48330	391066		-	e,uw			Sanitization rotor
48335	75918		-	e,uw			Rotor sanitization group
48340	11800		-	e,uw			8/16 Clamp
48345	540090		-	e,uw			Ø 10 Plastic 3 ways connection
48350	14506		-	e,uw			EPDM Ø10x17 rubber pipe
48355	391067		-	e,uw			Dosing sanitization system 220/50 3L/H
48375	3003906		-	e,uw			Sanitization connection

Type : 200E
Serie: RX Compact
Rev. : 0.0
S/N : ----
Date: 09/2016
Note:----



ID	P-code	SN from	SN to	Mod.	Acces.	Volt	Description
Module:Internal components							
14600	391043		-	e,uw			Basket-slide bar
14610	11600102		-	e,uw			Overflow pipe assembly
14620	500599		-	e,uw			Pump suction-filter
14625	391077		-	e,uw			G 3/8" Stopper
14630	391079		-	e,uw			G 3/8" Stopper gasket
14635	135911		-	e,uw			Air trap
14640	13301		-	e,uw			Gasket ROLMART 14x8x1.5
14645	391078		-	e,uw			G 3/8" Ring nut
14650	75311		-	e,uw			Heating element cover
14655	16045		-	e,uw			Heating element support Ø6.3
14660	30001011		-	e,uw			Heating element 9kW 230/240 V 3
14660	30001011/A		-	e,uw			Heating element 12kW 230/240 V 3
14660	30001011/B		-	e,uw			Heating element 14kW 230/240 V 3
14660	30001011/C		-	e,uw			Heating element 9kW 440V
14660	30001011/D		-	e,uw			Heating element 12kW 440V
14665	13015		-	e,uw			O-ring 160 (6225)
14670	13021		-	e,uw			DEM 40 O-ring
14676	93509		-	e,uw			Support filter
14685	11702		-	e,uw			Nut
14695	11600907		-	e,uw			Strainer plate
14705	3003129		-	e,uw			Rubber holder elbow G 3/8"
14710	3003130		-	e,uw			OR gasket 123 NBR
14715	10200171		-	e,uw			FASIT gasket 25x17x2
14720	3003128		-	e,uw			G 3/8" Load water elbow
14745	88110		-	e,uw			Pressure switch (260-30)
14750	3009363		-	e,uw			Pressure switch support
14765	500615		-	e,uw			Ferrule with filter
14770	80208		-	e,uw			O-ring 95x75x3

Type : 200E
 Serie: RX Compact
 Rev. : 0.0
 S/N : ----
 Date: 09/2016
 Note:----



ID	P-code	SN from	SN to	Mod.	Acces.	Volt	Description
Module:Internal components							
14775	500603		-	e,uw			Threated scrap tray

Type : 200E
Serie: RX Compact
Rev. : 0.0
S/N : ----
Date: 09/2016
Note:----



ID	P-code	SN from	SN to	Mod.	Acces.	Volt	Description
Module:Boiler components							
16800	392006		-	e,uw			Bottom boiler insulating
16805	392005		-	e,uw			Boiler insulating
16810	392004		-	e,uw			Boiler
16815	13015		-	e,uw			O-ring 160 (6225)
16820	75311		-	e,uw			Heating element cover
16825	16045		-	e,uw			Heating element support Ø6.3
16830	30001011		-	e,uw			Heating element 9kW 230/240 V 3
16830	30001011/A		-	e,uw			Heating element 12kW 230/240 V 3
16830	30001011/B		-	e,uw			Heating element 14kW 230/240 V 3
16830	30001011/C		-	e,uw			Heating element 9kW 440V
16830	30001011/D		-	e,uw			Heating element 12kW 440V
16835	2000380		-	e,uw			Contactor BF12 (heating element < 9 kW)
16835	2000385		-	e,uw			Contactor BF20 (heating element > 9 kW)
16840	2000403		-	e,uw			Automatic fuse C20 (heating element < 9 kW)
16840	2000404		-	e,uw			Automatic fuse C25 (heating element > 9 kW)
16845	392004/A		-	e,uw			Ø 57 Blinde flange

Type : 200E

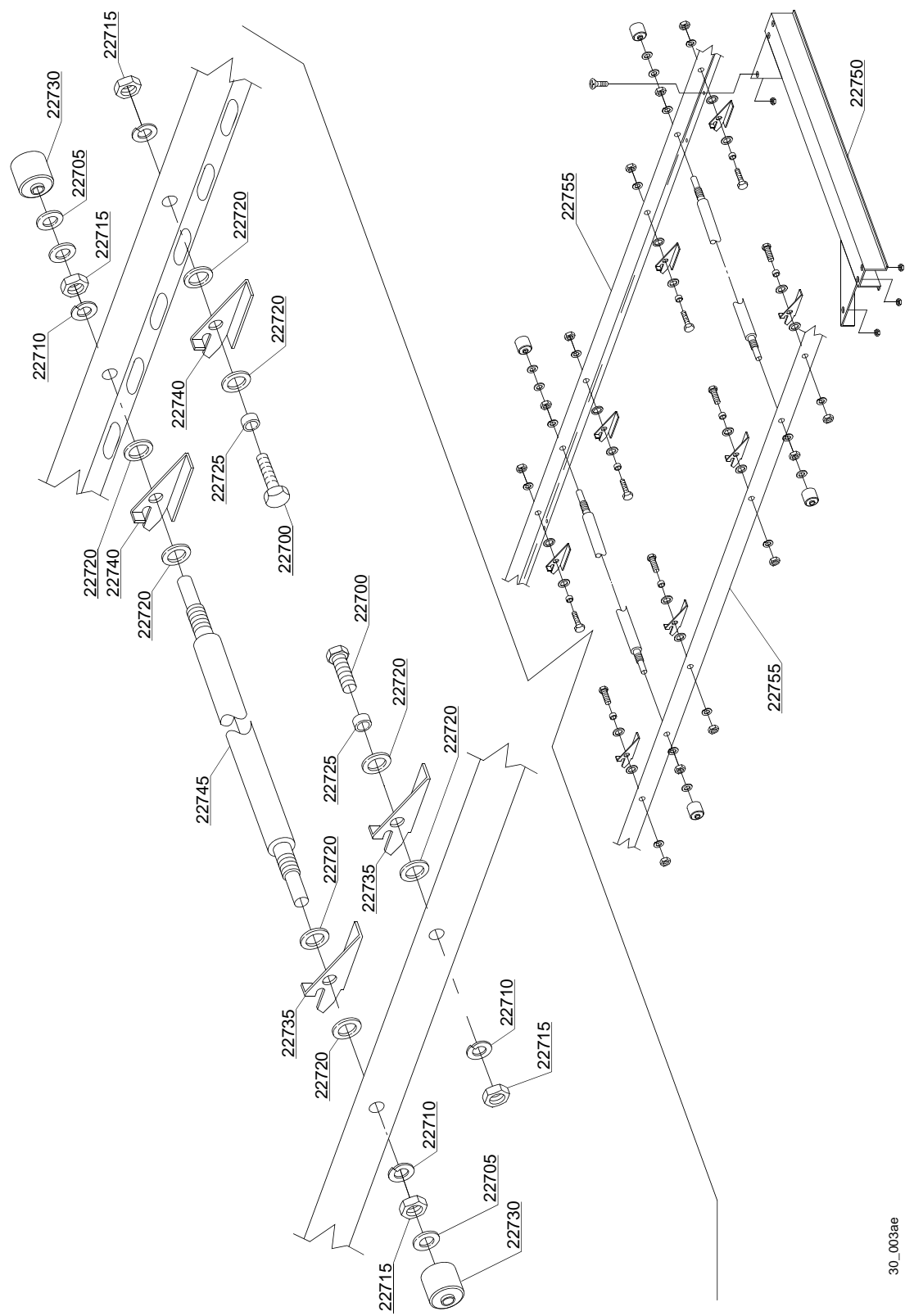
Serie: RX Compact

Rev. : 0.0

S/N : ----

Date: 09/2016

Note:----



30_003ae

ID	P-code	SN from	SN to	Mod.	Acces.	Volt	Description
Module:Conveyor							
22700	11109		-	e,uw			Screw
22705	11185		-	e,uw			Washer
22710	11609		-	e,uw			Split washer
22715	11719		-	e,uw			Nut
22720	3003024		-	e,uw			Washer
22725	3003025		-	e,uw			Bush
22730	3003026		-	e,uw			Bush
22735	3003100		-	e,uw			Clip right
22740	3003101		-	e,uw			Clip left
22745	3003010		-	e,uw			Axis
22750	391014		-	e,uw			Guide
22755	391048		-	e,uw			Mobile chassis

Type : 200E

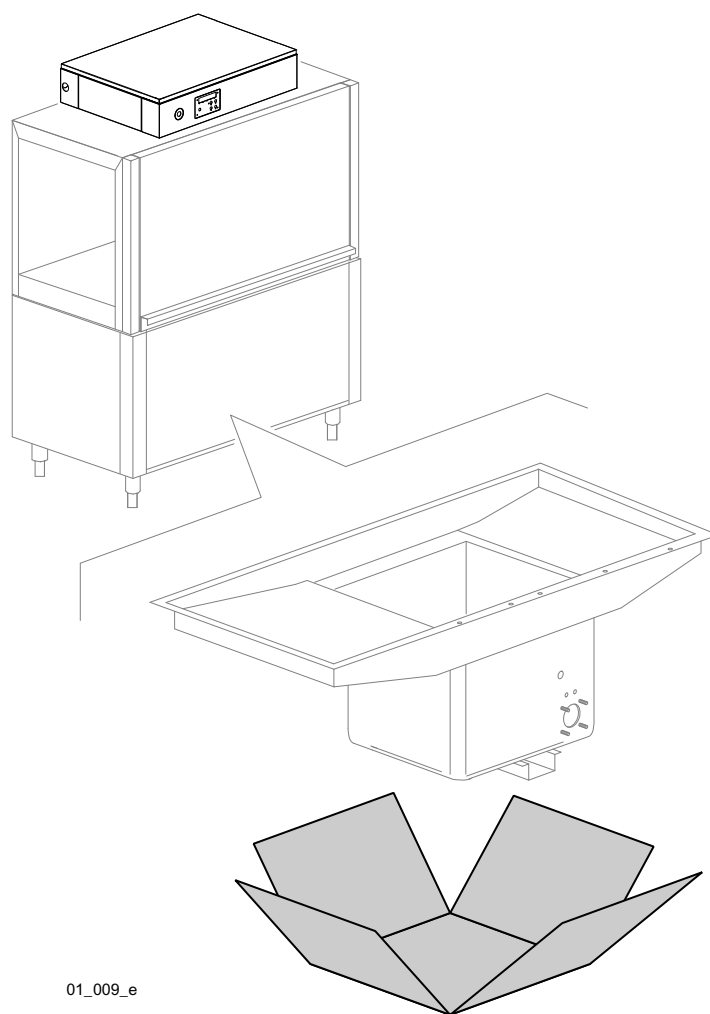
Serie: RX Compact

Rev. : 0.0

S/N : ----

Date: 09/2016

Note:----



01_009_e

ID	P-code	SN from	SN to	Mod.	Acces.	Volt	Description
Module: Tank insulation							
999	999910214		-	e,uw	ti		Tank insulation
							N.B.: kit suppliable only together with the machine, not after

Type : 200E
Serie: RX Compact
Rev. : 0.0
S/N : ----
Date: 09/2016
Note:----

This exploded view diagram illustrates the components of the Kuvings W800 juicer. The central unit is a white, two-tiered juicer with a control panel on the top tier. Surrounding the unit are several components shown in an exploded state: a large rectangular back panel with a textured, ribbed surface; a smaller rectangular panel; a square panel; and a long, narrow rectangular panel. These panels are likely part of the juicer's housing or a protective enclosure.

ID	P-code	SN from	SN to	Mod.	Acces.	Volt	Description
Module:Double skin							
999	999910074		-	e,uw	ds		Double skin assembly
							N.B.: kit suppliable only together with the machine, not after

Type : 200E

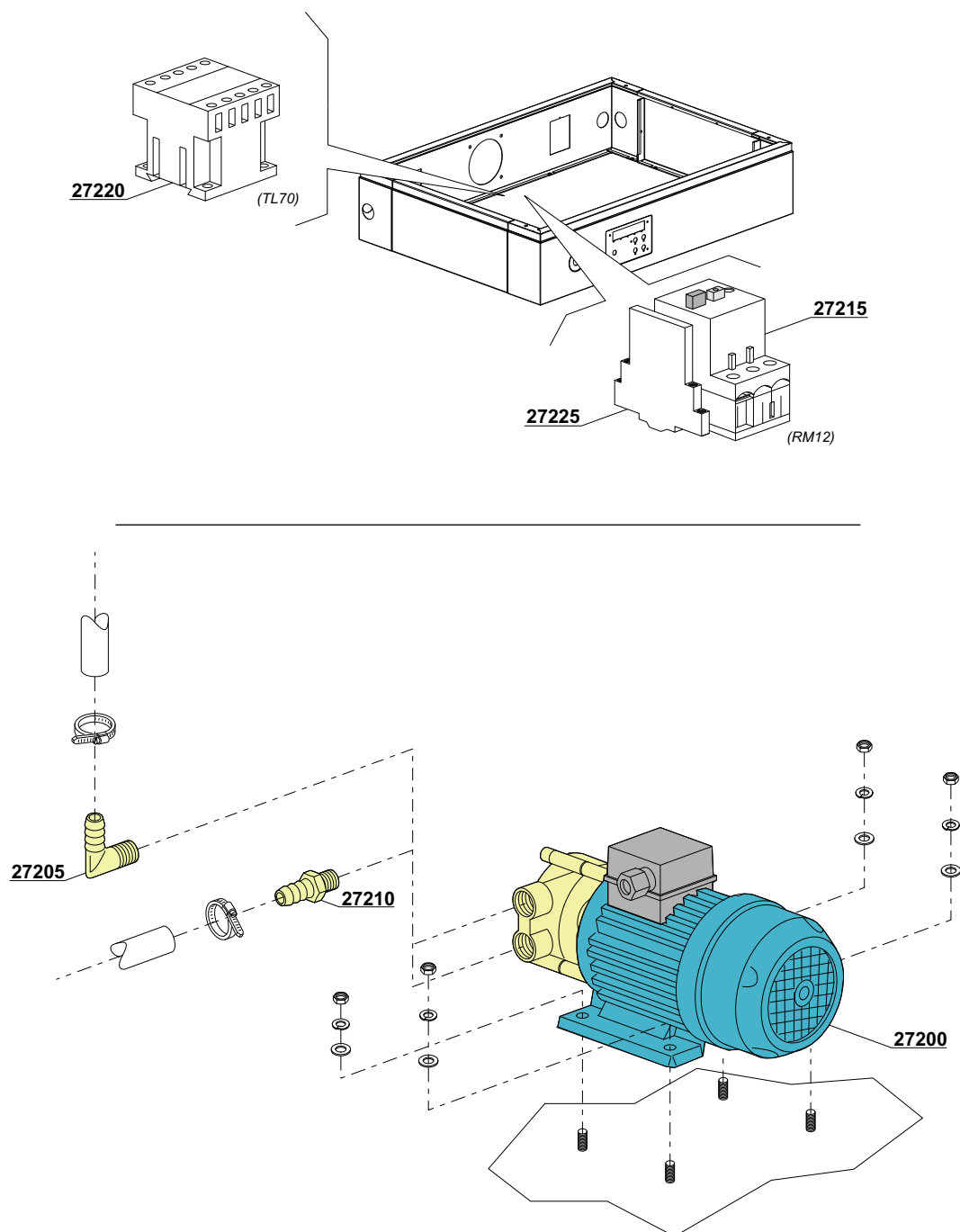
Serie: RX Compact

Rev. : 0.0

S/N : ----

Date: 09/2016

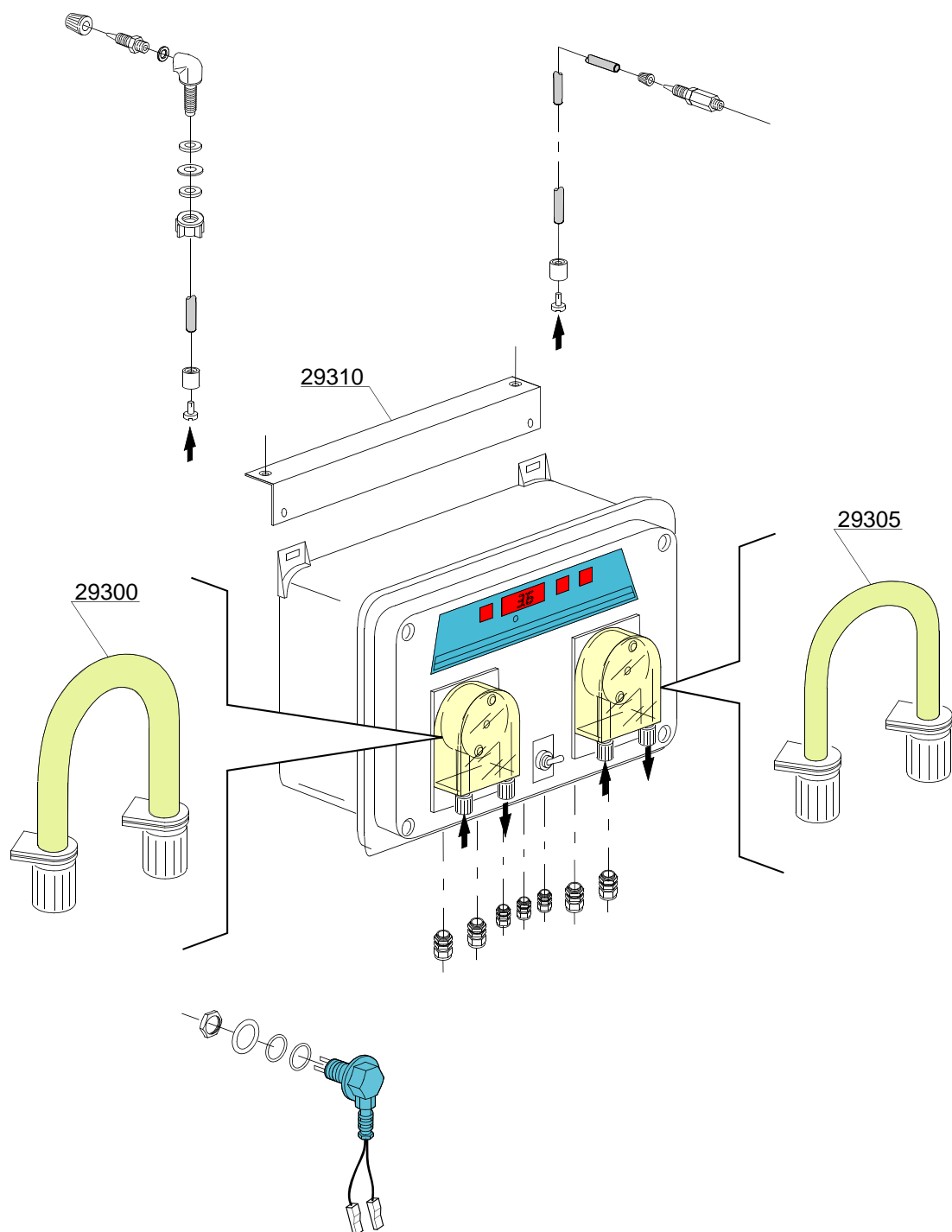
Note:----



01_007_e

ID	P-code	SN from	SN to	Mod.	Acces.	Volt	Description
Module:Booster pump							
27200	15100/Q		-		bp		Booster pump
27205	12030		-		bp		Elbow pipe fitting
27210	10221311		-		bp		Pipe fitting
27215	2000394		-		bp		Motorprotector 2,5-4A
27220	2000370		-		bp		Contactor MC9
27225	3006080		-		bp		Auxiliary contact LMS25

Type : 200E
Serie: RX Compact
Rev. : 0.0
S/N : ----
Date: 09/2016
Note:----



39_001_e

ID	P-code	SN from	SN to	Mod.	Acces.	Volt	Description
Module:Dispensers SDN-3							
	15181/A		-		sdn3		Dispensers assembly SDN-3
29300	15185		-		sdn3		Pipe fitting for detergent dispenser
29305	15186		-		sdn3		Pipe fitting for rinse dispenser
29310	3009669		-		sdn3		Dispensers assembly SDN-3 support

Type : 200E

Serie: RX Compact

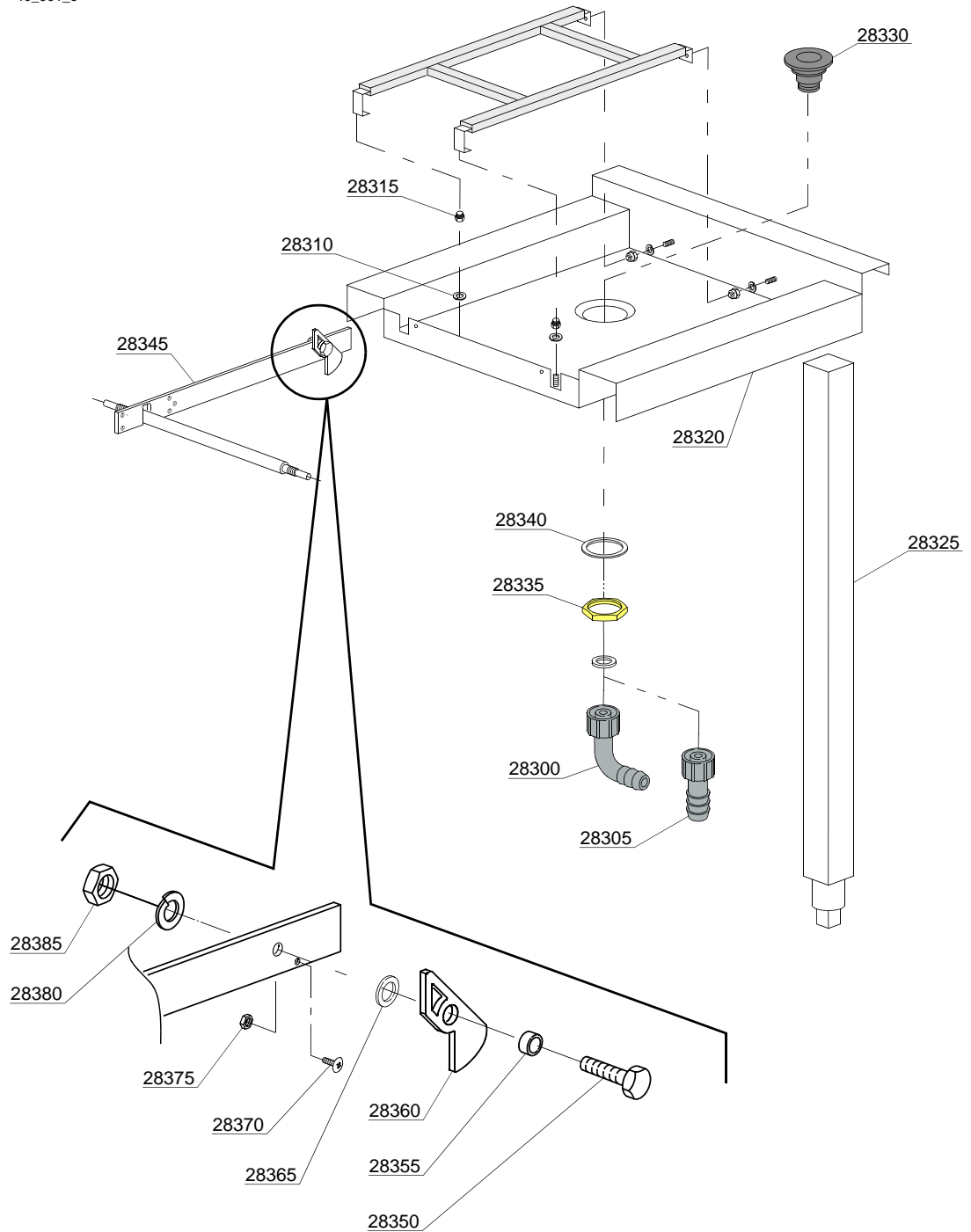
Rev. : 0.0

S/N : ----

Date: 09/2016

Note:----

40_001_e



ID	P-code	SN from	SN to	Mod.	Acces.	Volt	Description
Module:Angle loading table 90°							
28300	15613		-		98		1" 1/4x30 nylon elbow
28305	15613/A		-		98		Fitting exauster
28310	3003024		-		98		Washer
28315	3003060		-		98		Spacer
28325	3009608		-		98		Leg assembly
28330	10200113		-		98		Floor drain
28335	10200114		-		98		Floor drain nut
28340	10200173		-		98		Gasket 75x58x2
28345	3003071		-		98		Clip support arm L=450mm (LC98 table)
28345	xxxx		-		98		Clip support arm L=600mm (LC98 table)
28350	11128		-		98		M10x25 inox screw
28355	3003060		-		98		11,7x10x6 bush
28360	3063009		-		98		Inox clip
28365	3003024		-		98		Teflon washer
28370	11197		-		98		M5x10 inox screw
28375	11707		-		98		M5 inox nut
28380	11609		-		98		M8 inox washer
28385	11719		-		98		M10 inox nut

Type : 200E

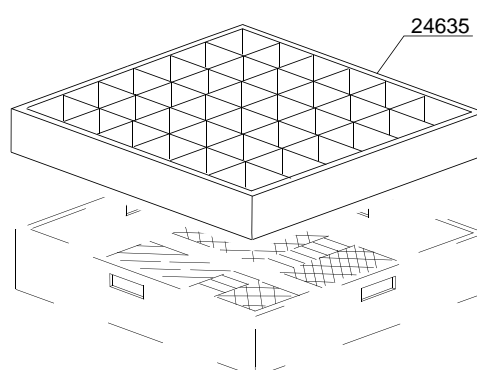
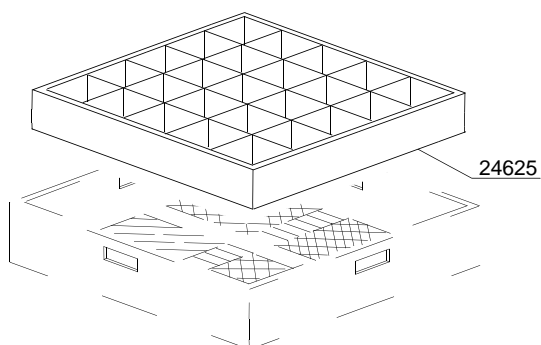
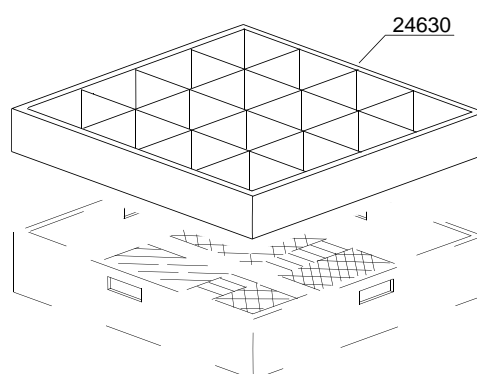
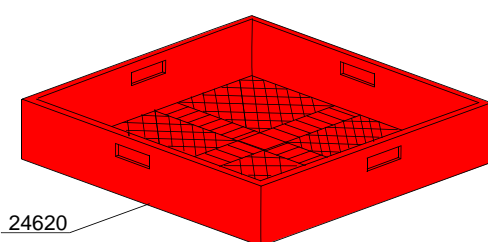
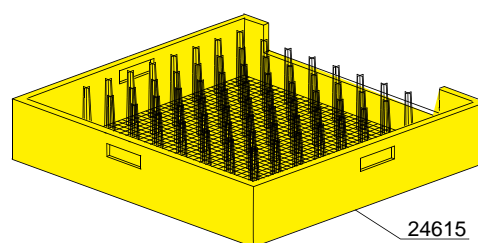
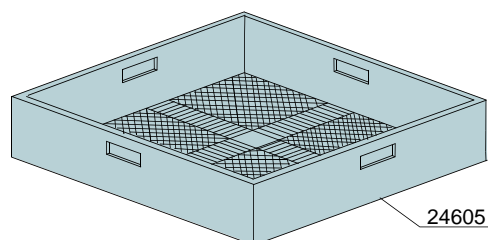
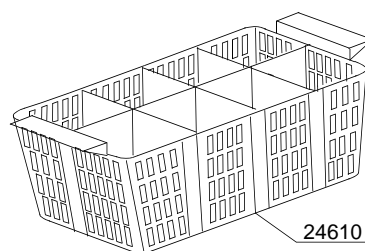
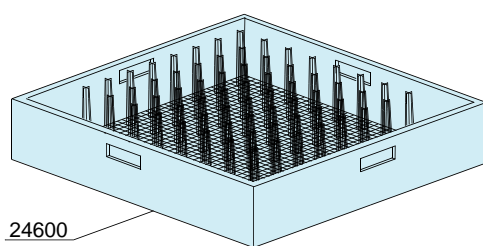
Serie: RX Compact

Rev. : 0.0

S/N : ----

Date: 09/2016

Note:----



00_001_e

ID	P-code	SN from	SN to	Mod.	Acces.	Volt	Description
Module:Baskets							
24600	C40		-				Place conveyor basket
24605	C41		-				Tight mesh conveyor basket for cutlery
24610	C47		-				Small 8 place cutlery basket
24615	C43		-				535mm tray conveyor basket
24620	C44		-				Mod.07 universal conveyor basket
24625	C112		-				5x5 vertical glass conveyor basket
24630	C113		-				4x4 vertical glass conveyor basket
24635	C114		-				6x6 vertical glass conveyor basket

Type : 200E

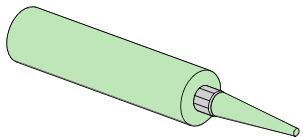

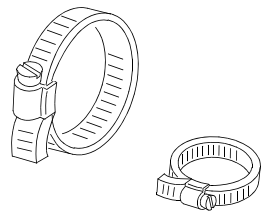
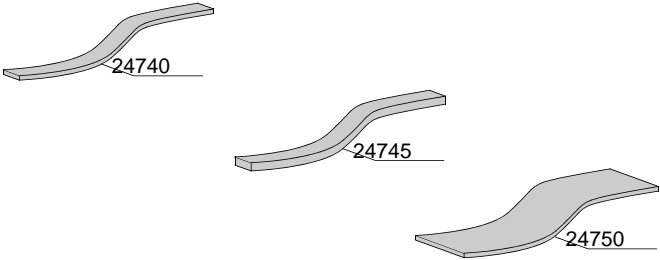
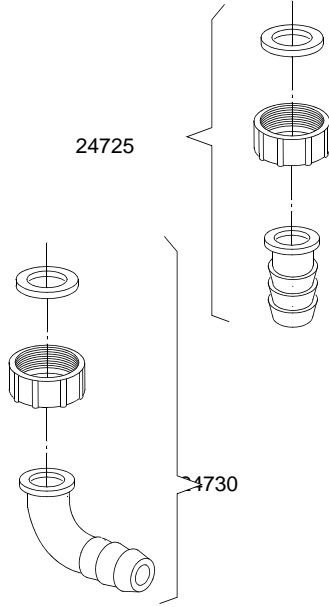
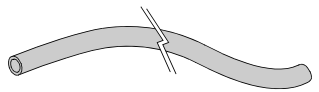
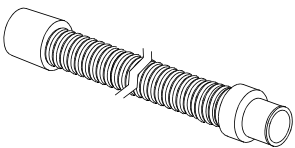
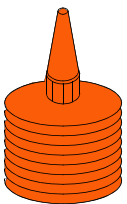
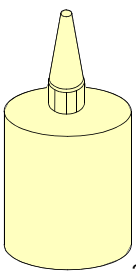
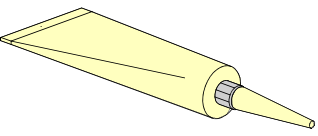
Serie: RX Compact

Rev. : 0.0

S/N : ----

Date: 09/2016

Note:----

 24700	 24705	 24760
 24740 24745 24750	 24725 24730	
 24755	 24735	
 24765	 24770	 24775

ID	P-code	SN from	SN to	Mod.	Acces.	Volt	Description
Module:Accessory							
24700	---		-				Silicone UNI 9610 - UNI 9611
24705	---		-				Grease for higt temperatures CCIAA 629224
24705	---		-				Grease for food - Loctite 8104 Cat. N° 26560
24725	15613/A		-				Fitting exauster
24730	15613		-				1" 1/4x30 nylon elbow
24735	10727		-				Exauster pipe Ø 24mm
24735	10200112		-				Exauster pipe Ø 32mm
24740	15750		-				20x2 self-stick mousse
24745	15751		-				20x4 self-stick mousse
24750	15752		-				60x2 self-stick mousse
24755	2907350		-				Flexible pipe EPDM Ø12
24755	2907352		-				Flexible pipe EPDM Ø12 - WRAS
24755	2907353		-				Flexible pipe EPDM Ø12
24760	11807		-				Steel hose clamp 15/24
24760	11806		-				Steel hose clamp 25/40
24760	11810		-				Steel hose clamp 40/60
24760	11824		-				Steel hose clamp 50/70
24760	2902491		-				Steel hose clamp 60/80
24765	---		-				-50°C +150°C threads dope
24770	---		-				Loctite 542 Cat.N° 54246 - DIN-DVGW 86.02 e 125
24770	---		-				Loctite 243 Cat.N° 18937 - 19386
24775	---		-				Loctite 511 Cat.N° 24003 - DIN-DVGW 86.01 e 125
24775	---		-				Loctite 577 Cat.N° 25392

Type : 200E
 Serie: RX Compact
 Rev. : 0.0
 S/N : ----
 Date: 09/2016
 Note:----