

909-700 000 **GR2 A**

909-718 000 **GR3 A**

909-719 000 **GR4 A**

3301-135 123 **GR2 S**

3301-135 124 **GR3 S**

3301-135 125 **GR4 S**

Cablaggio elettrico \*  
Complete electrical wire

3501-117 396 **F 4A**

3501-091 867 **50mA**

537-031 800

531-403 500  $\varnothing 9$

532-160 600

531-492 300  $\varnothing 5,8$

2302-134 897

3761-132 128

531-491 400

4881-133 964

3529-133 898

4081-132 841

3529-133 899  
**Nero/Black**

3342-133 957

502-604 250

562-204 000

441-168 000

465-331 000

562-204 000

542-904 040

909-724 010

4031-052 283

4831-133 995

4014-115 248

532-160 200 **GR 3/4 UL**

4831-133 996

4701-118 606

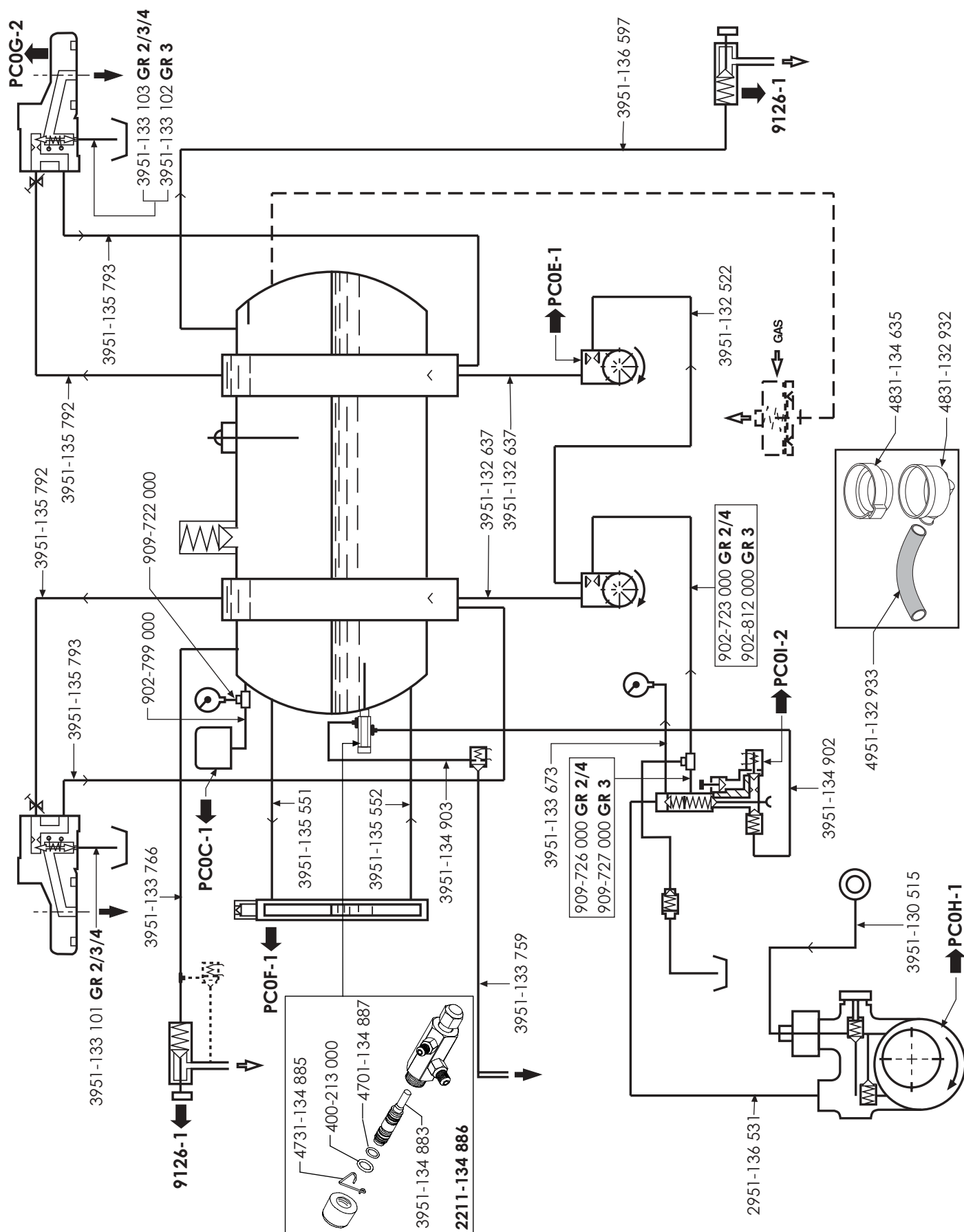
3341-133 613

3751-134 591 **GR 2 UL**

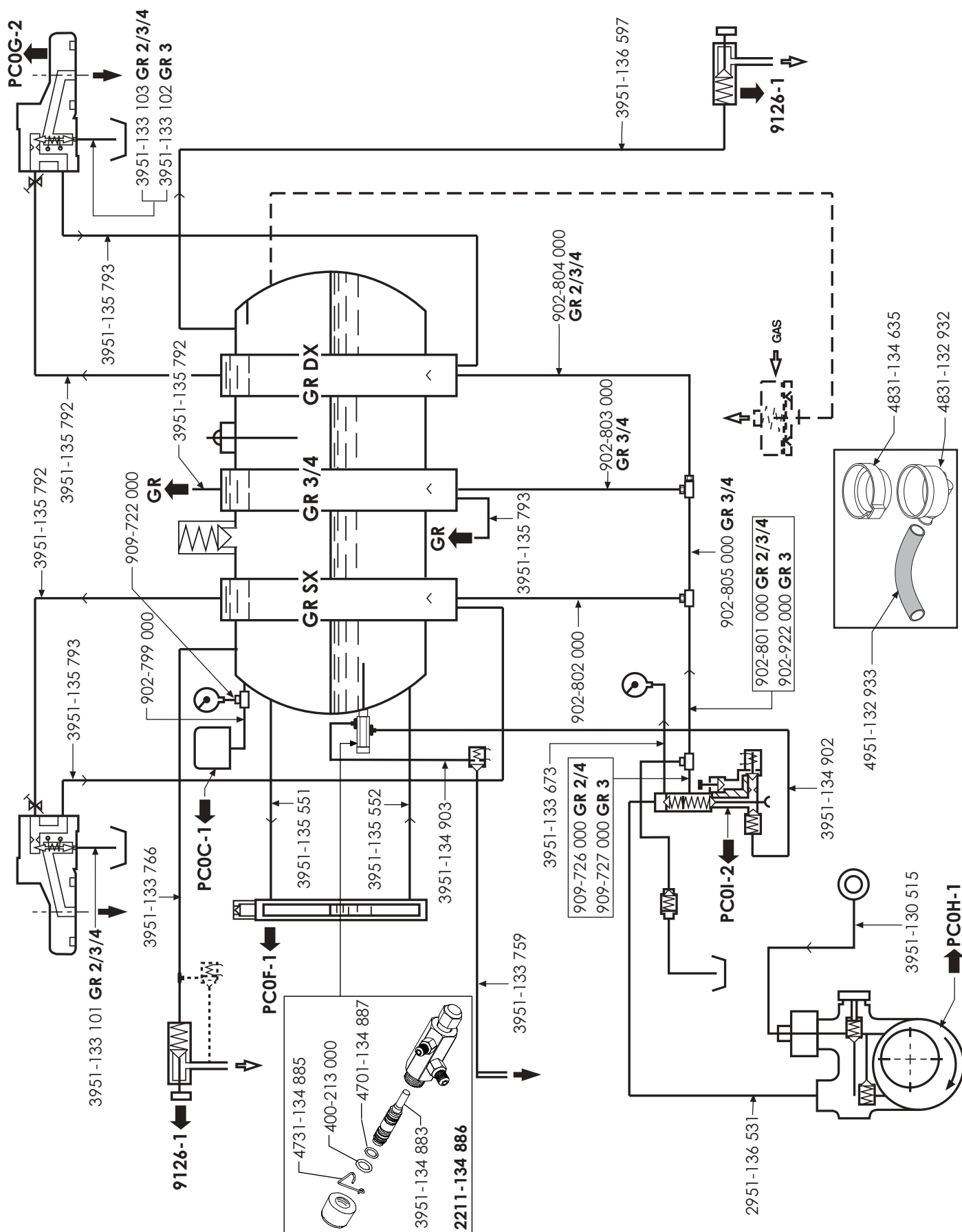
902-177 000 **GR 3/4 UL**

2341-091 853

Kit allacciamento monofase



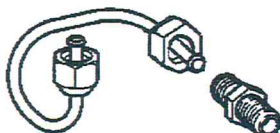
## E91 Ambassador S





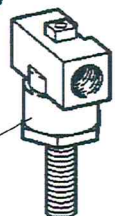
**Cappuccinatore**

**2441 - 133 754** 220 ÷ 240 V 50 ÷ 60 Hz  
**2432 - 133 754** 220 V 60 Hz UL  
**2445 - 133 754** 200 V 50 ÷ 60 Hz

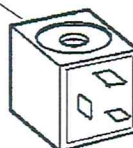


4121 - 131 931

**2441 - 132 018** 220 ÷ 240 V 50 ÷ 60 Hz  
**2432 - 132 018** 220 V 60 Hz UL  
**2445 - 132 018** 200 V 50 ÷ 60 Hz

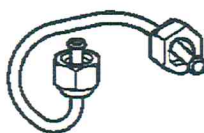


4121 - 131 931



**Acqua - Water - Eau  
Wasser - Agua**

**2441 - 133 762** 220 ÷ 240 V 50 ÷ 60 Hz  
**2445 - 133 762** 200 V 50 ÷ 60 Hz

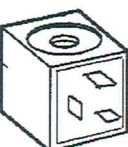


4121 - 131 931

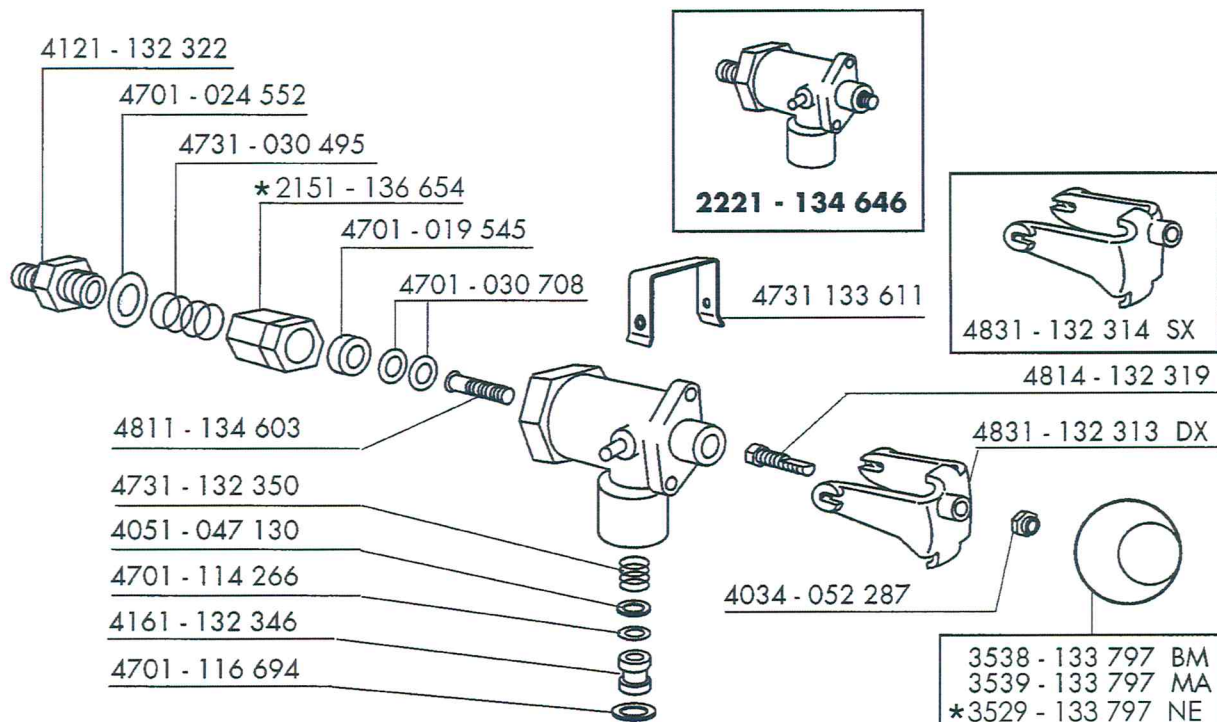
**2441 - 132 017** 220 ÷ 240 V 50 ÷ 60 Hz  
**2432 - 132 017** 220 V 60 Hz UL  
**2445 - 132 017** 200 V 50 ÷ 60 Hz



4121 - 131 931



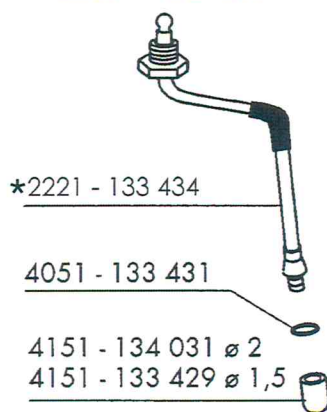




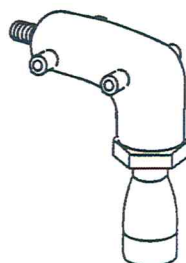
VAPORE - STEAM



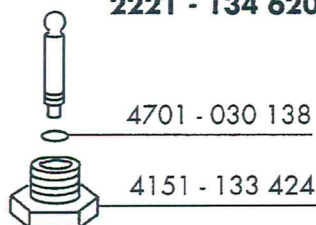
**2221 - 133 434**



ACQUA - WATER



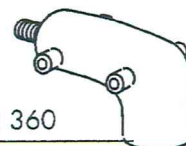
**2221 - 134 620**



**2221 - 134 619**



CAPPUCCINATORE -  
CAPPUCCINO COCK



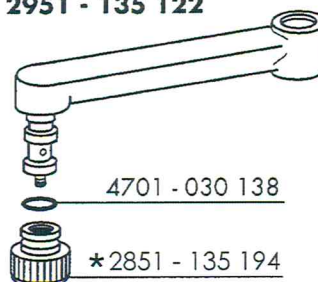
4701 - 116 694

4121 - 135 346

4701 - 030 138

**2221 - 135 376**

**2951 - 135 122**



Valido dalla matricola n.°  
Valable à partir du matricule n.°  
Valid from No. - Gültig ab der Abkenn.-Nr. - Valido a partir de la matricula n.°

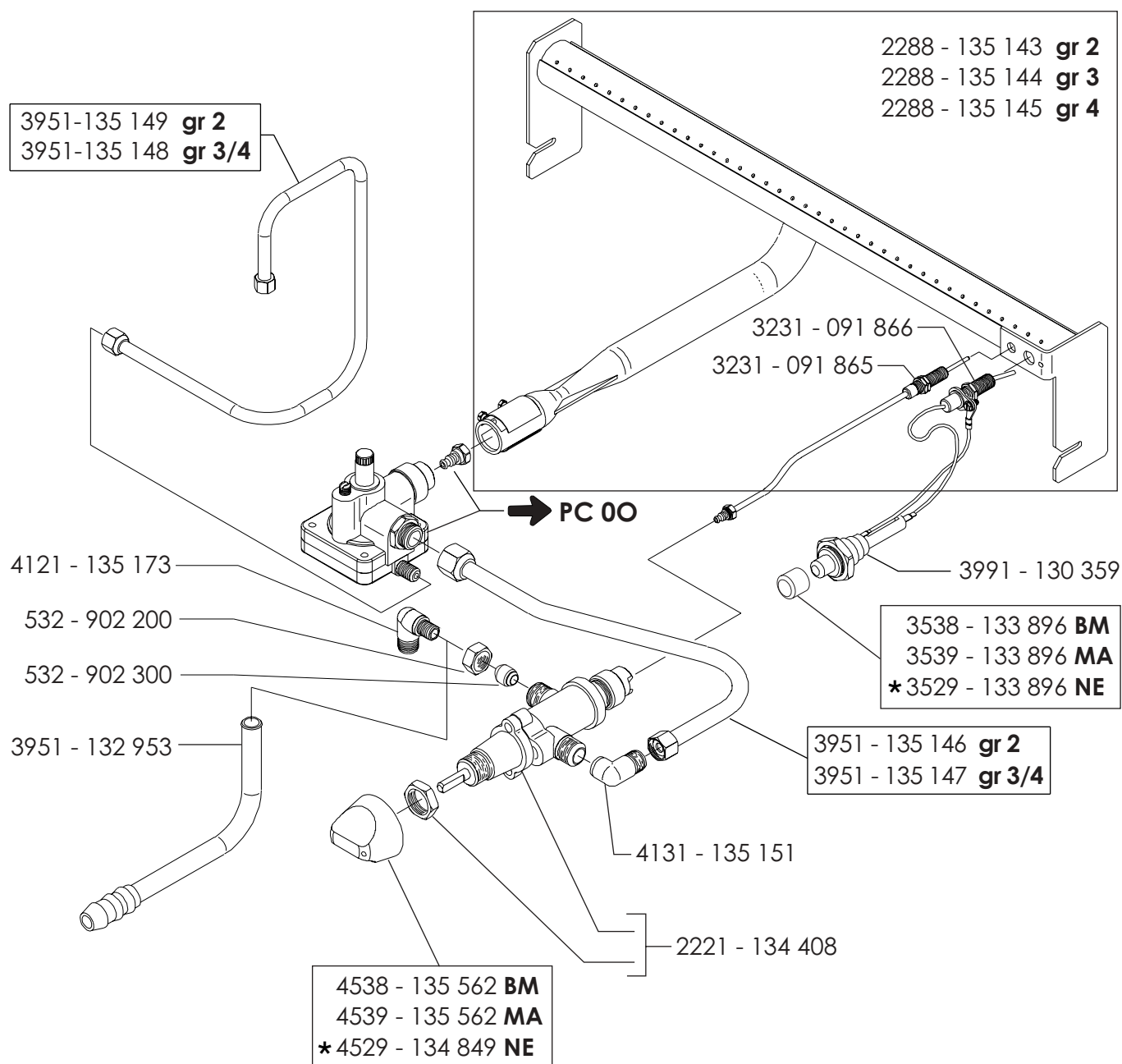
\* Particolare nuovo o modificato - Pièce nouvelle ou modifiée - New or modified part  
Neues oder geändertes Teil - Particular nuevo o modificado

**03 - 03**

Edizione del  
Edition du  
Edition of  
Ausgabe vom  
Edición del

**9126-1**

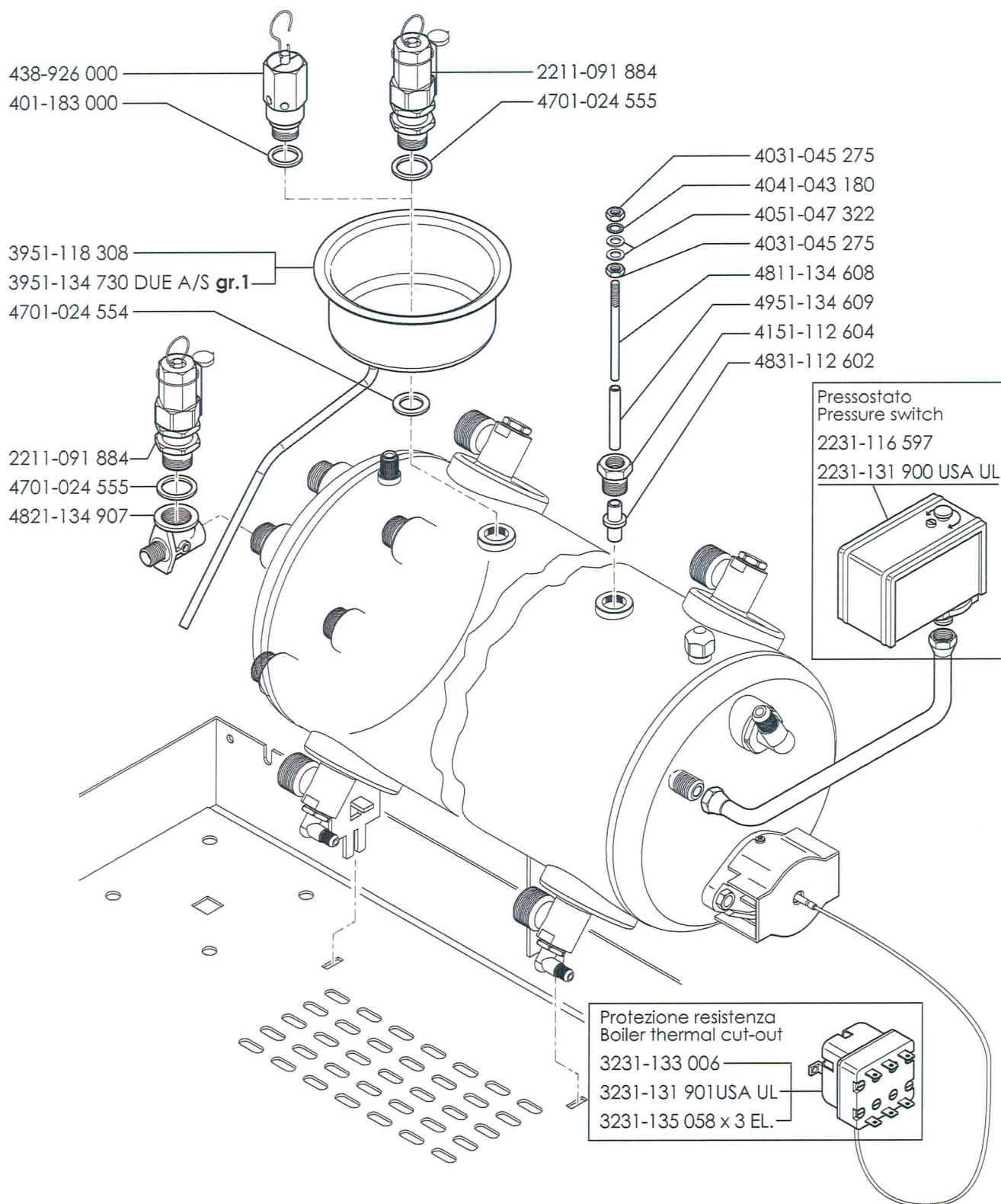
TAB.



**BM** = Blu marino/Blue Marine  
**MA** = Marrone/Brown  
**NE** = Nero/Black

VALVOLE DI SICUREZZA - CLAPET DE SÉCURITÉ - SAFETY VALVE  
SICHERHEITSVENTIL - VALVULA DE SEGURIDAD

**E91 N Diplomat - E97 -E98 P**  
**Due - Smart - E92 Elite**



Valido dalla matricola n.°

Valable à partir du matricule n.°

Valid from No. - Gültig ab der Abkenn.-Nr. - Valido a partir de la matricula n.°

\* Particolare nuovo o modificato - Pièce nouvelle ou modifiée - New or modified part  
Neues oder geändertes Teil - Particular nuevo o modificado

**07 - 02**

Edizione del  
Edition du  
Edition of  
Ausgabe vom  
Edition del

**PC0C-1**

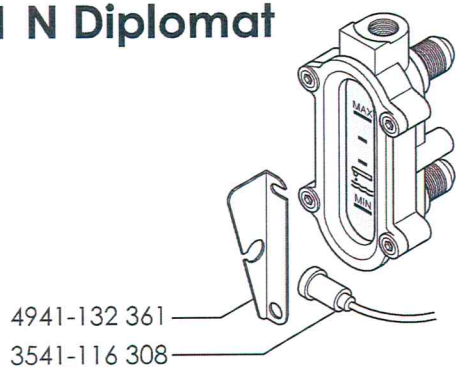
TAB.



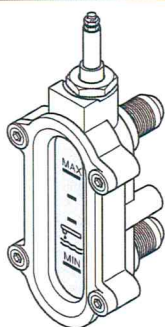
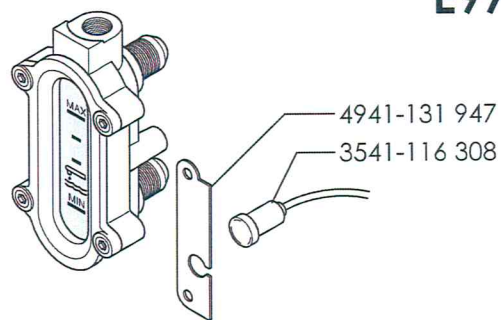
LIVELLO OTTICO - NIVEAU OPTIQUE - OPTICAL LEVEL  
WASSERSTANDSANZEIGER - NIVEL OPTICO

**E91 N Diplomat - E97 - E98 P  
Due - Smart - E92 Elite**

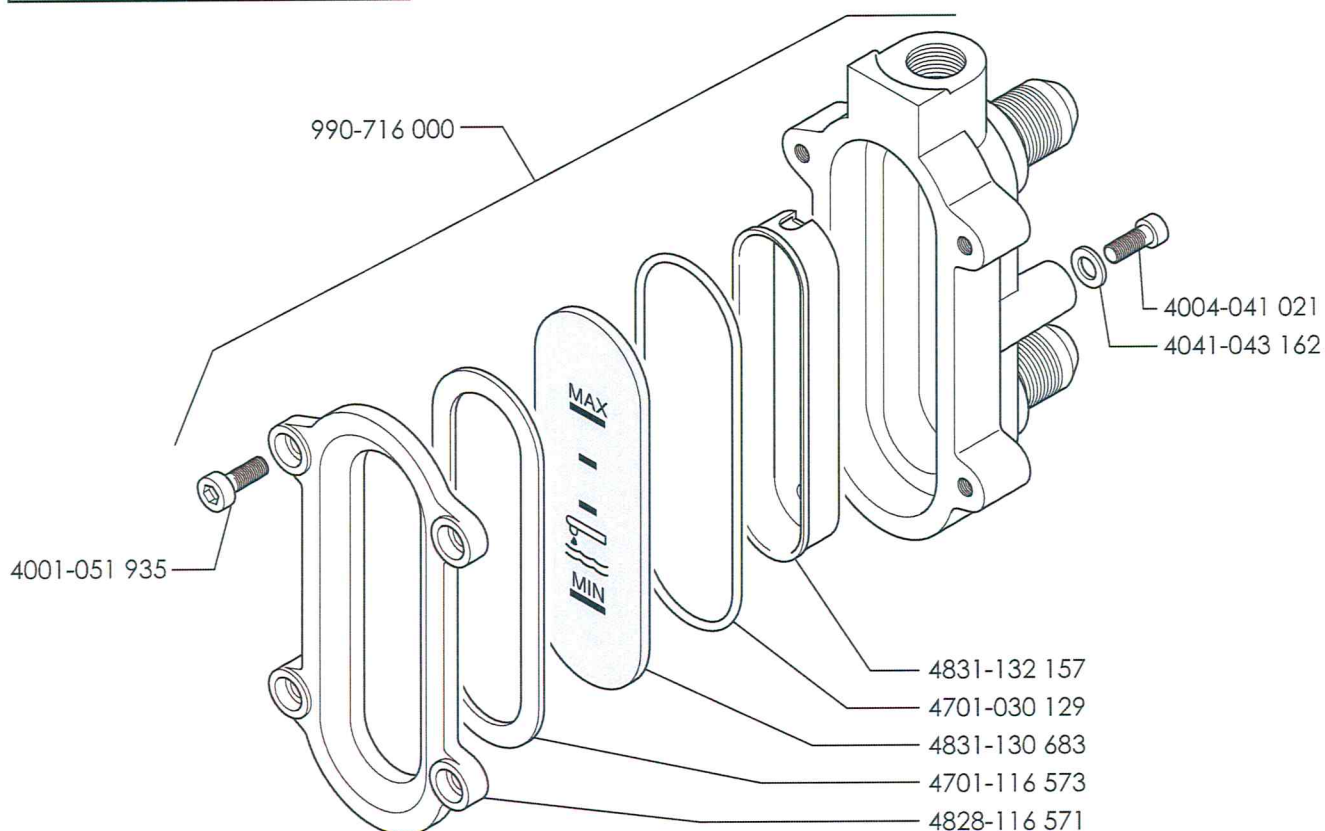
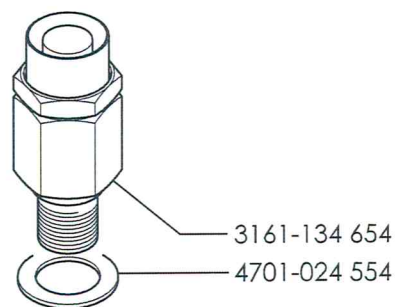
## E91 N Diplomat



## E97



**2211-118 911**



Valido dalla matricola n.°  
Valable à partir du matricule n.°  
Valid from No. - Gültig ab der Abkenn.-Nr. - Valido a partir de la matricula n.°

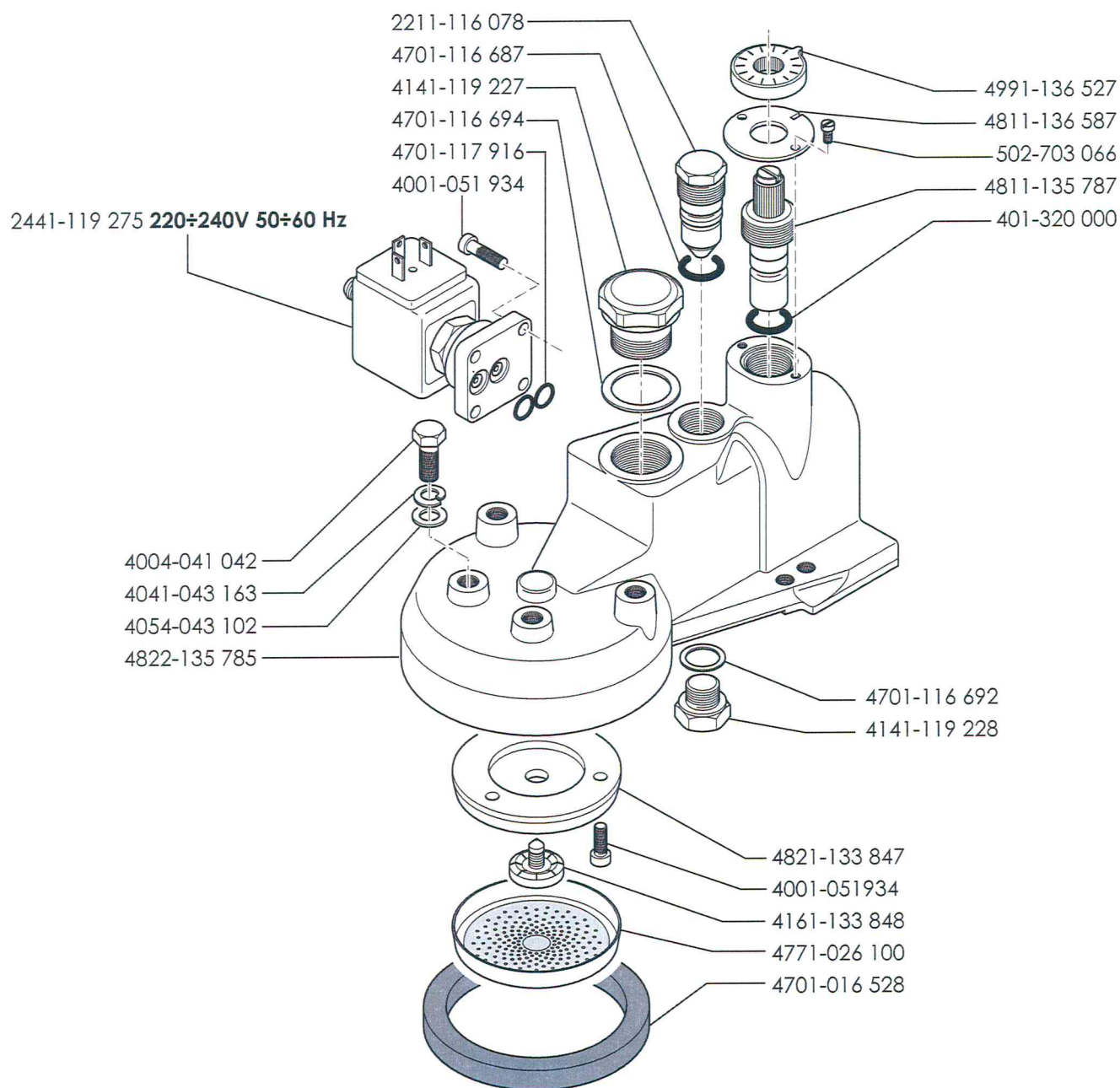
\* Particolare nuovo o modificato - Pièce nouvelle ou modifiée - New or modified part  
Neues oder geändertes Teil - Particular nuevo o modificado

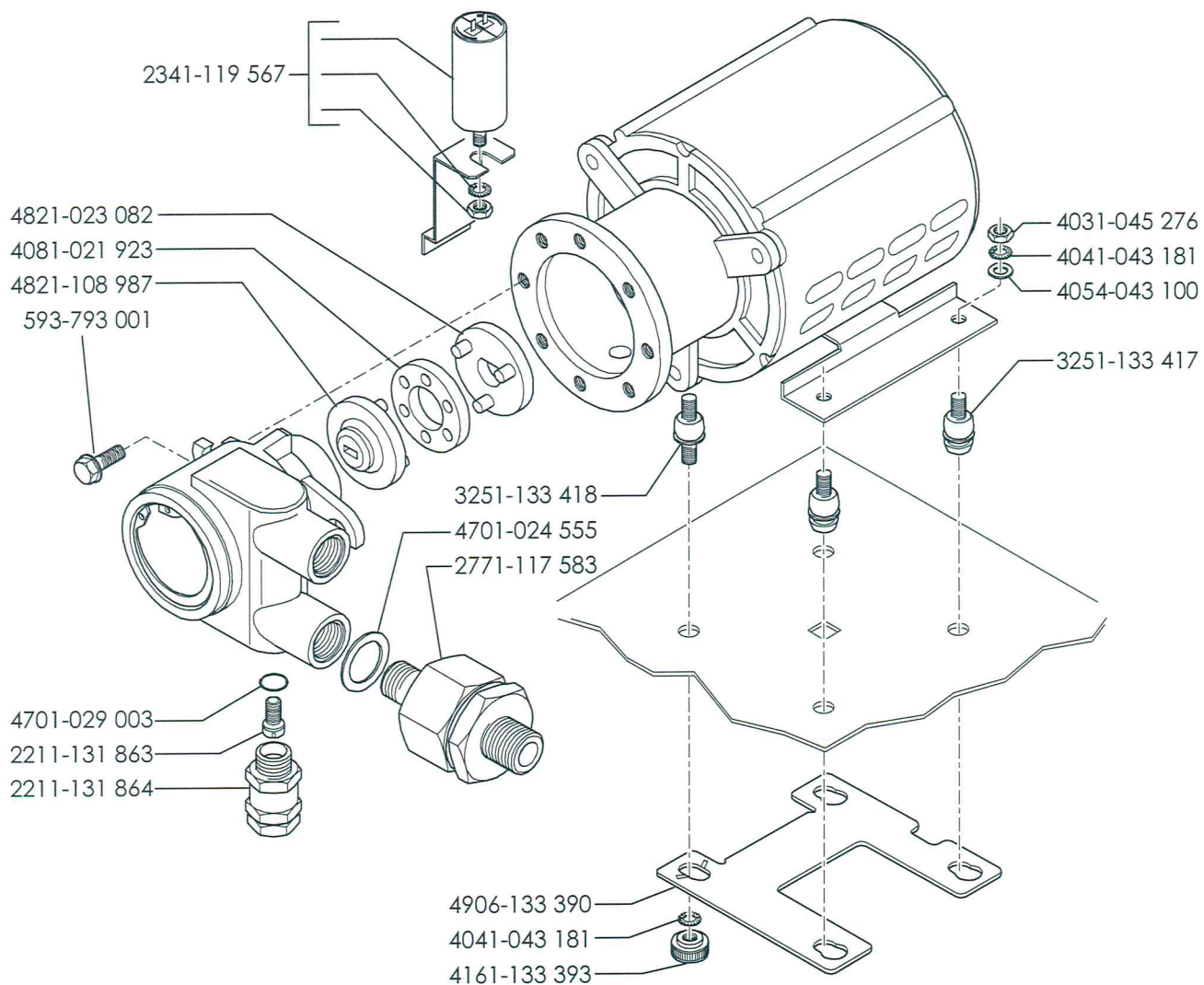
**07 - 02**

Edizione del  
Edition du  
Edition of  
Ausgabe vom  
Edición del

**PC0F-1**

TAB.





Valido dalla matricola n.°

Valable à partir du matricule n.°

Valid from No. - Gültig ab der Abkenn.-Nr. - Valido a partir de la matricula n.°

\* Particolare nuovo o modificato - Pièce nouvelle ou modifiée - New or modified part  
Neues oder geändertes Teil - Particular nuevo o modificado

07 - 02

Edizione del  
Edition du  
Edition of  
Ausgabe vom  
Edición del

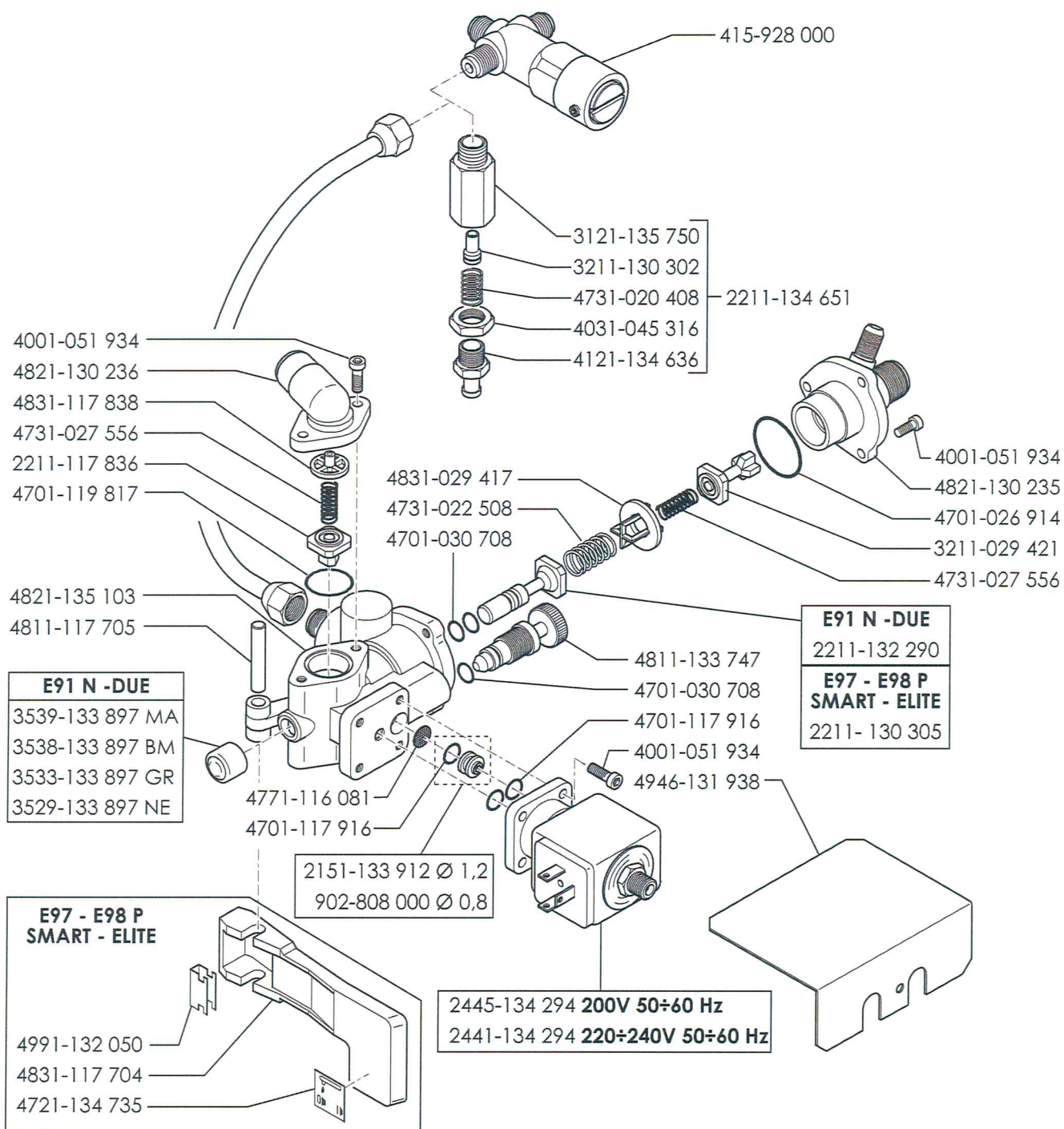
PC0H-1

TAB.



GRUPPO VALVOLE CON AUTOLIVELLO - BLOC VANNES AVEC ENTREE D'EAU AUTOMATIQUE - VALVE BLOCK WITH SELF LEVEL - VENTILBLOCK MIT AUTOM. WASSERSTAND - BLOQUE VALVULAS CON AUTONIVEL

**E91 N Diplomat - E97 -E98 P Due - Smart - E92 Elite**



Valido dalla matricola n.°   
Valable à partir du matricule n.°   
Valid from No. - Gültig ab der Abkenn.-Nr. - Valido a partir de la matricula n.°

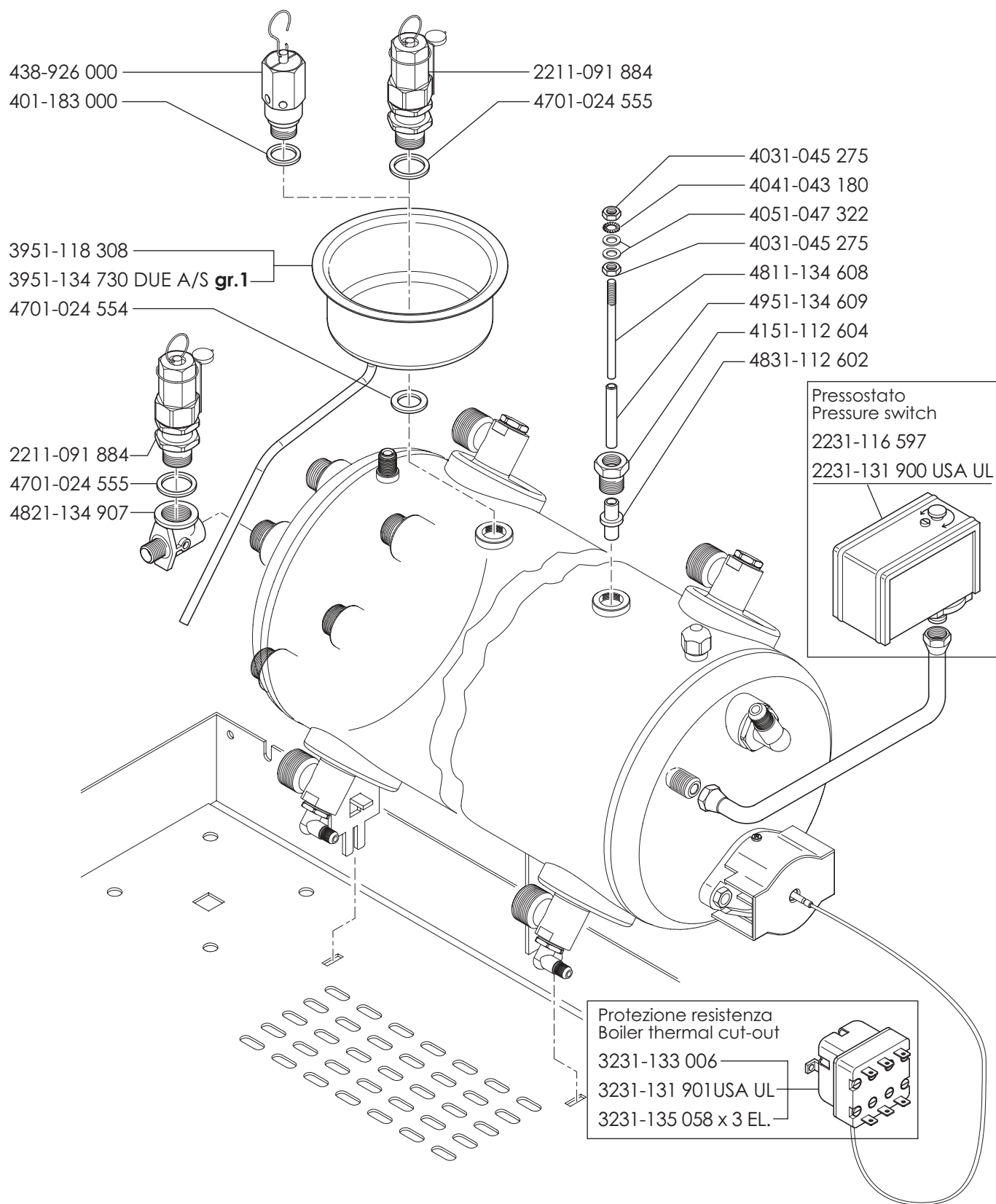
\* Particolare nuovo o modificato - Pièce nouvelle ou modifiée - New or modified part  
Neues oder geändertes Teil - Particular nuevo o modificado

**07 - 02**

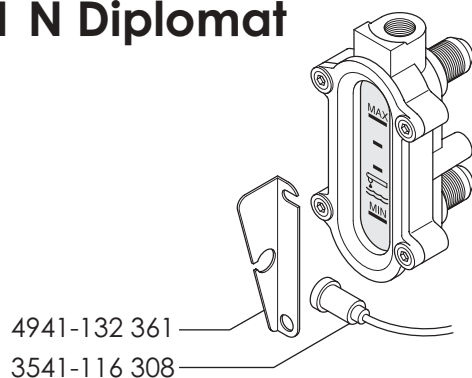
Edizione del  
Edition du  
Edition of  
Ausgabe vom  
Edición del

**PCOI-2**

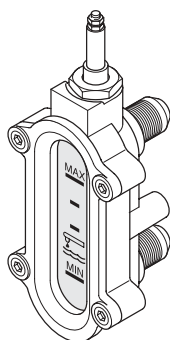
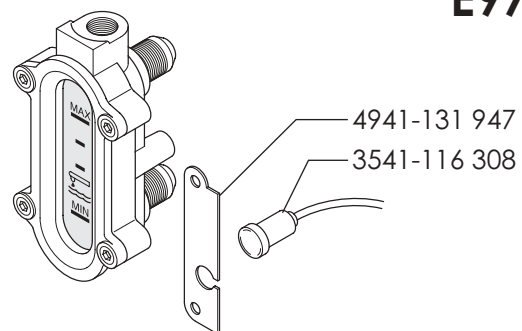
TAB.



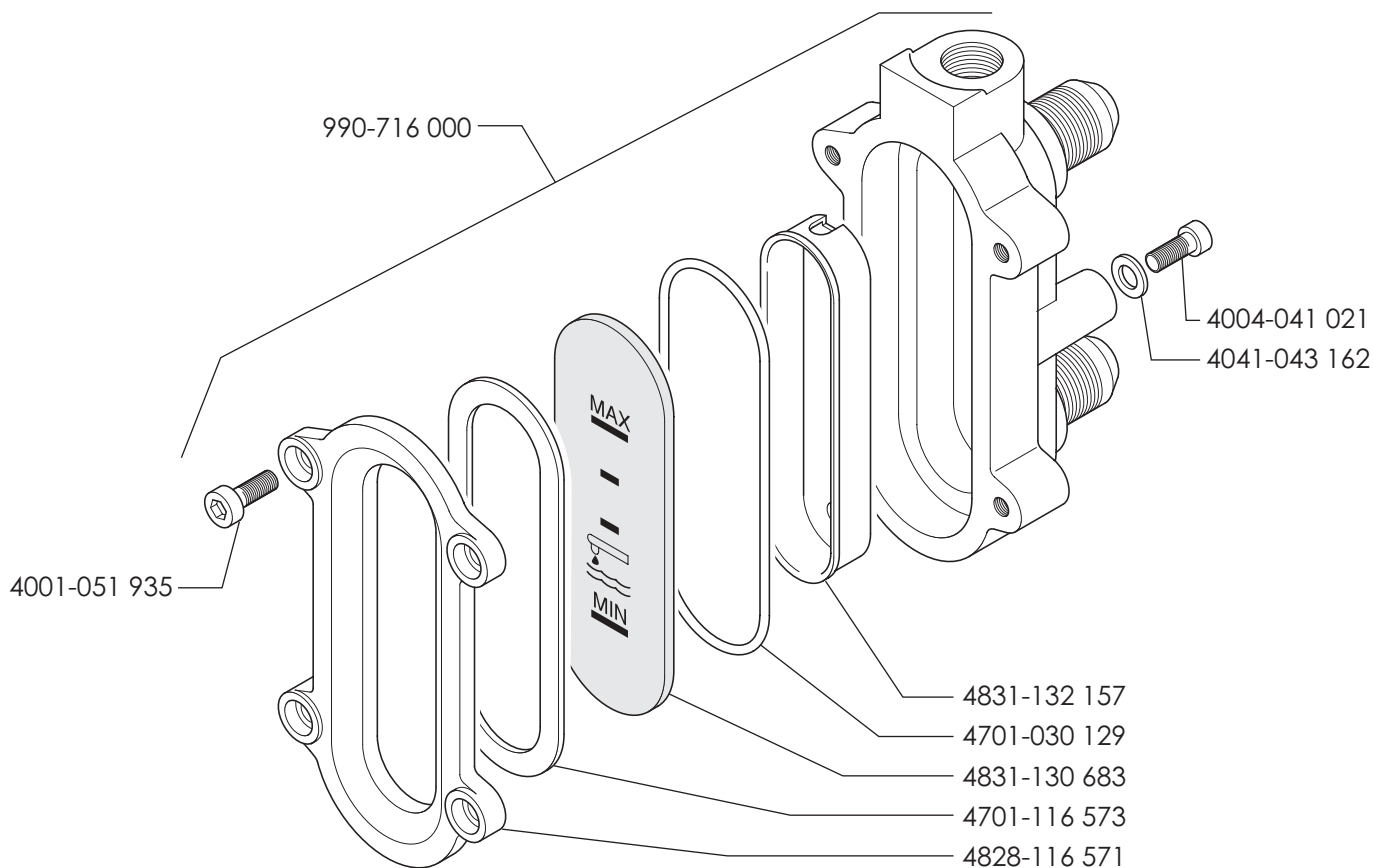
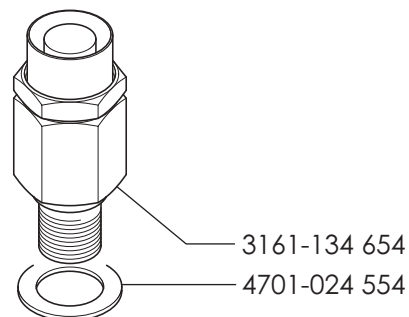
## E91 N Diplomat

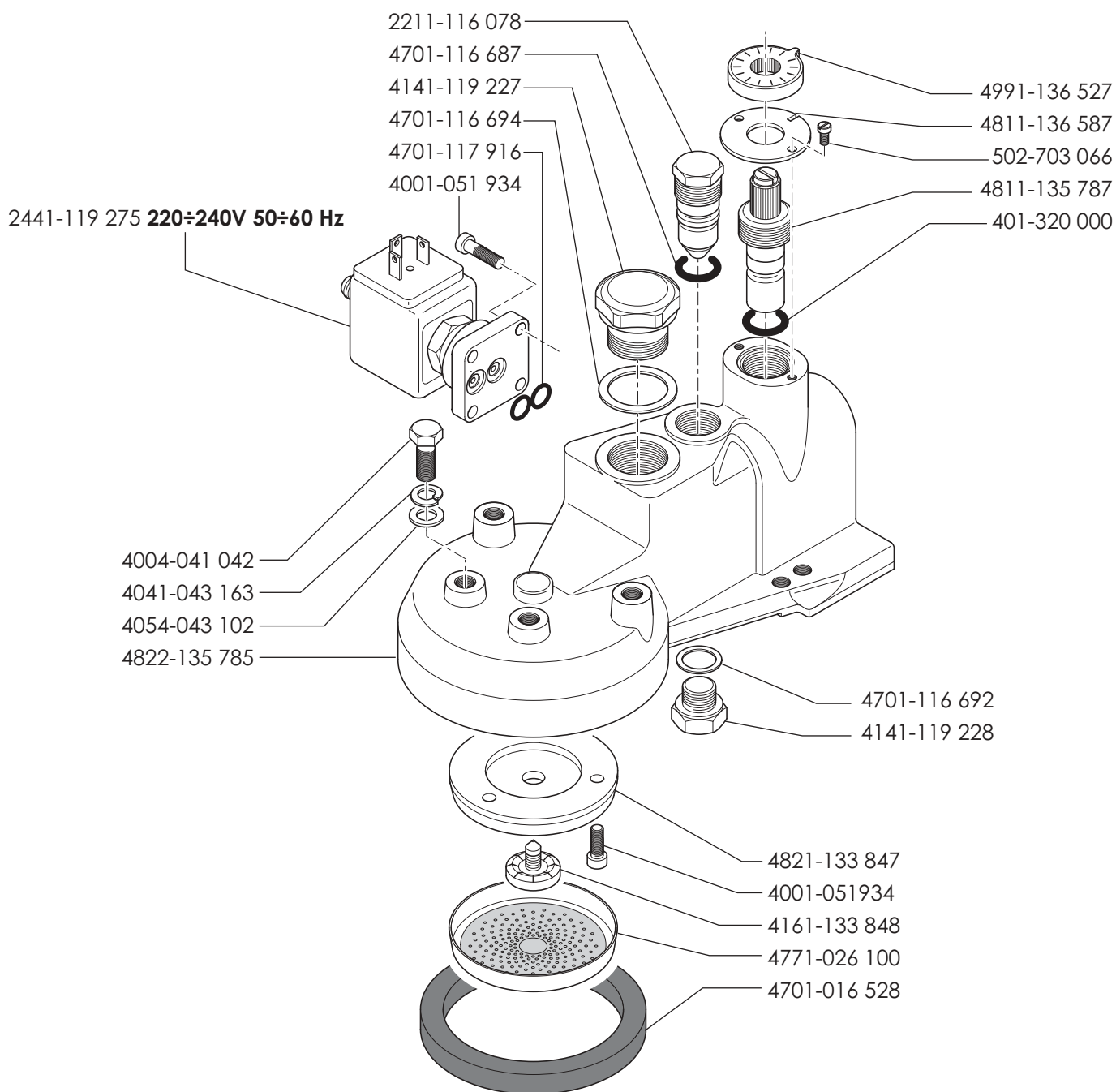


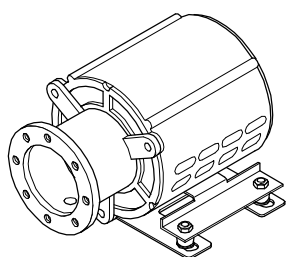
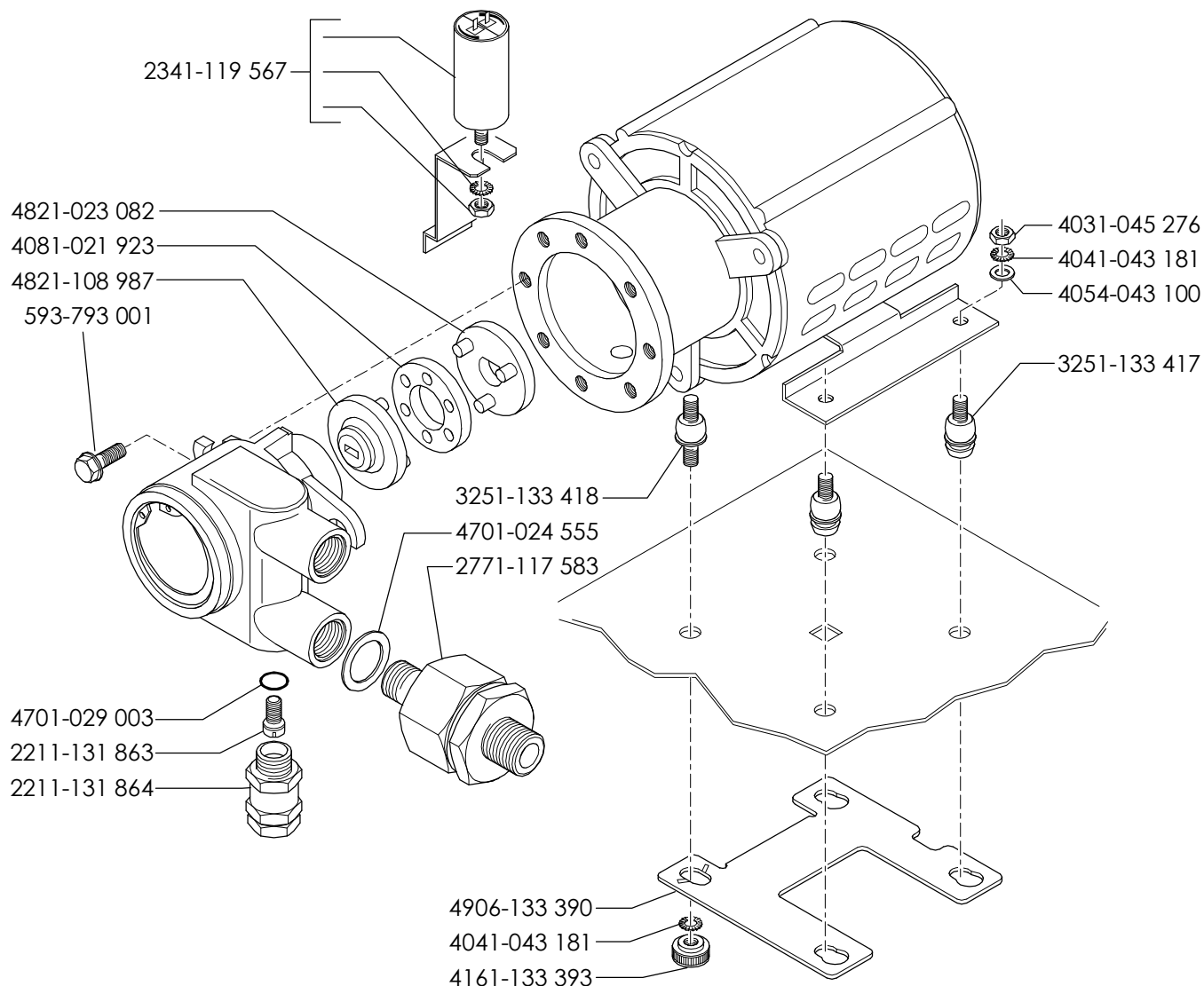
## E97



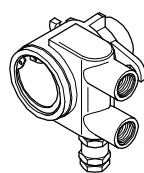
**2211-118 911**







1000-091 851



2241-130 177



Valido dalla matricola n.°  
Valable à partir du matricule n.°

Valid from No. - Gültig ab der Abkenn.-Nr. - Valido a partir de la matricula n.°

\* Particolare nuovo o modificato - Pièce nouvelle ou modifiée - New or modified part  
Neues oder geändertes teil - Particular nuevo o modificado

07 - 02

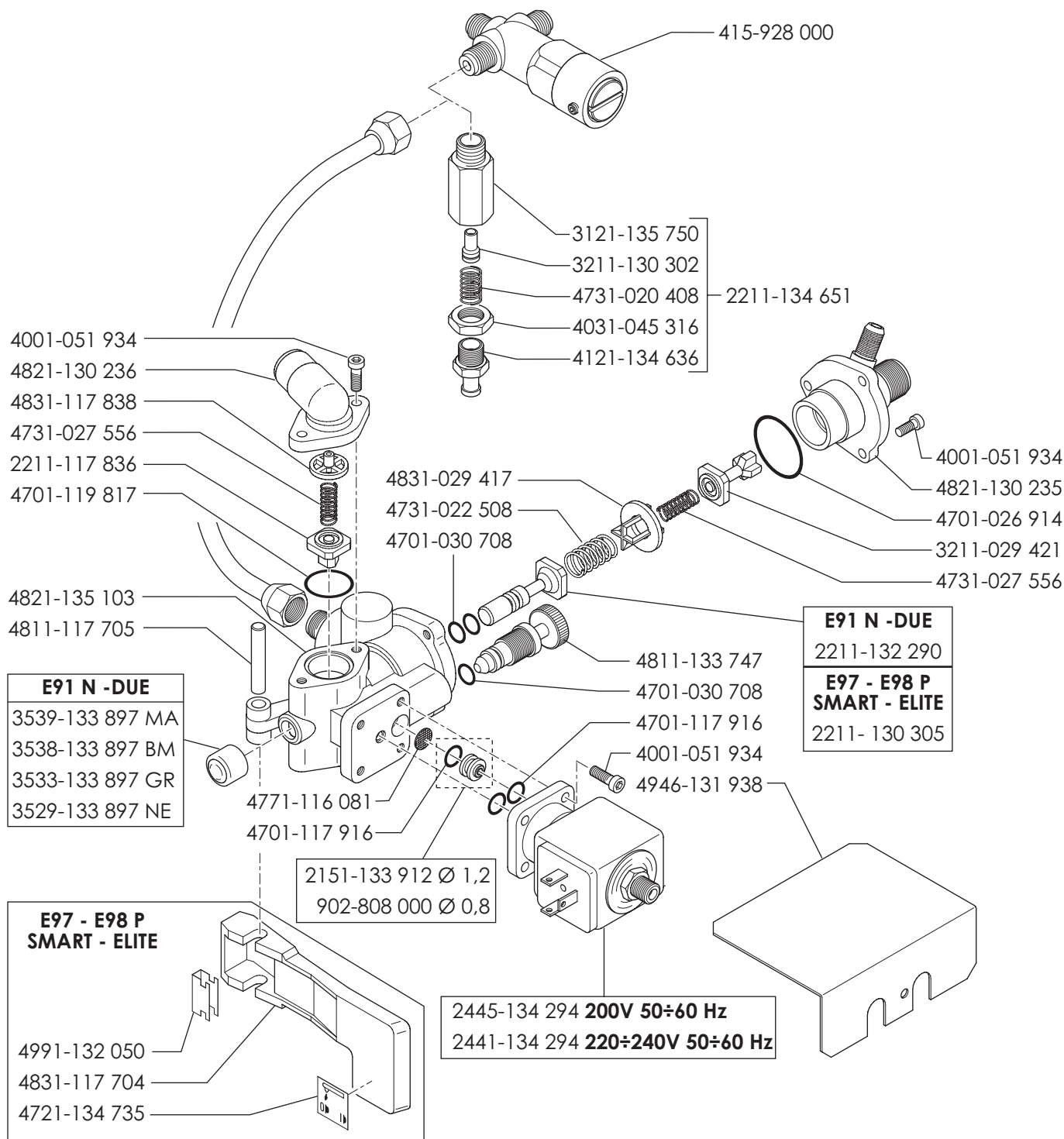
Edizione del  
Edition du  
Edition of  
Ausgabe vom  
Edición del

PC0H-1

TAB.

GRUPPO VALVOLE CON AUTOLIVELLO - BLOC VANNES AVEC ENTREE  
D'EAU AUTOMATIQUE - VALVE BLOCK WITH SELF LEVEL - VENTILBLOCK  
MIT AUTOM. WASSERSTAND - BLOQUE VALVULAS CON AUTONIVEL

**E91 N Diplomat - E97 -E98 P**  
**Due - Smart - E92 Elite**



Valido dalla matricola n.°  
Valable à partir du matricule n.°

Valid from No. - Gültig ab der Abkenn.-Nr. - Valido a partir de la matricula n.°

\* Particolare nuovo o modificato - Pièce nouvelle ou modifiée - New or modified part  
Neues oder geändertes Teil - Particular nuevo o modificado

**07 - 02**

Edizione del  
Edition du  
Edition of  
Ausgabe vom  
Edición del

**PCOI-2**

TAB.