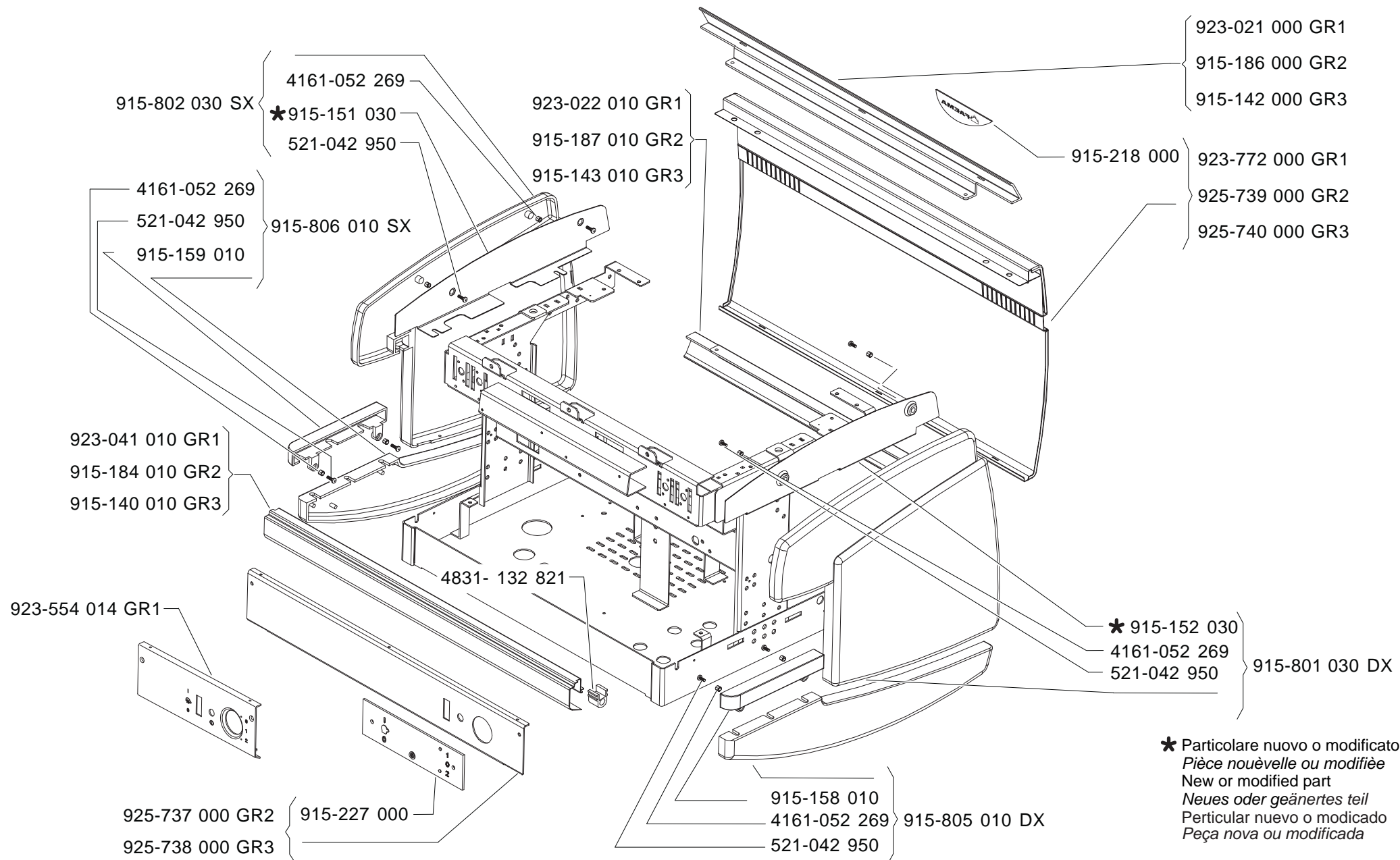


For N.S.F



\* Particolare nuovo o modificato  
Pièce nouvelle ou modifiée  
New or modified part  
Neues oder geändertes Teil  
Particular nuevo o modificado  
Peça nova ou modificada

915-802 030 SX

4161-052 269

521-042 950

\* 915-151 030

\* 915-801 030 DX

\* 915-152 030

4161-052 269

521-042 950

4161-052 269

915-804 010 SX V.A.

923-020 010 GR1 V.A.

915-185 010 GR2 V.A.

915-141 010 GR3 V.A.

923-013 010 GR1 V.A.

915-180 020 GR2 V.A.

915-133 020 GR3 V.A.

4161-052 269

915-803 010 DX V.A.

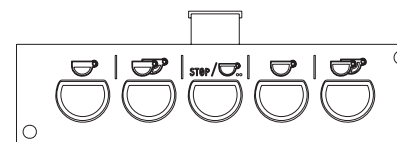
915-192 004 GR2

915-124 004 GR3

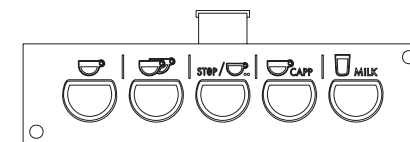
923-016 014 GR1

(■) For N.S.F

**ENOVA A**

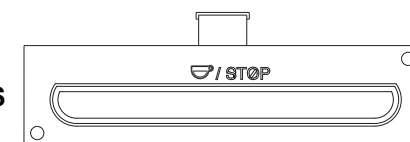


915-173 000

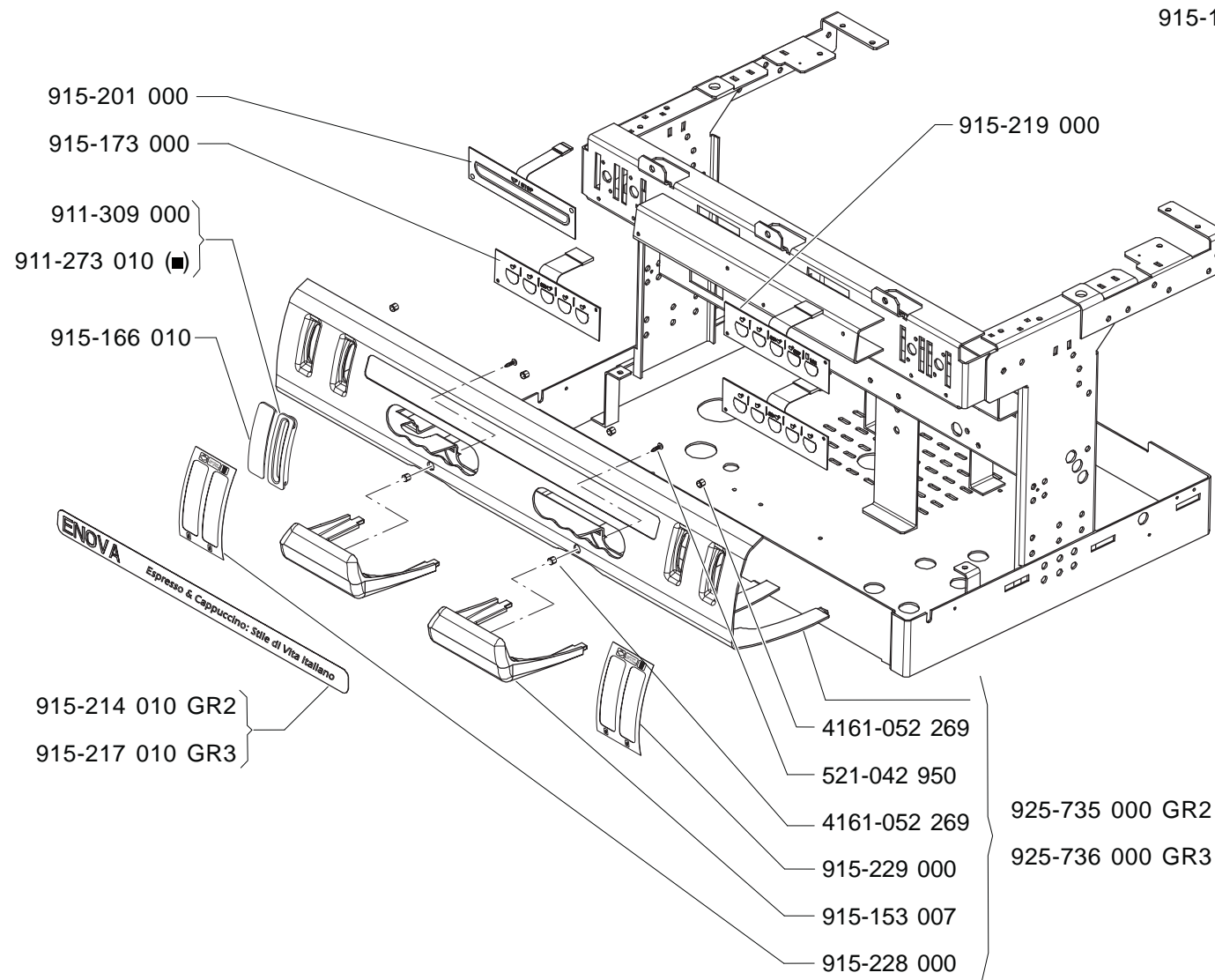


915-219 000

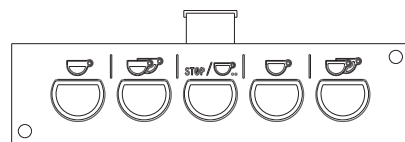
**ENOVA S**



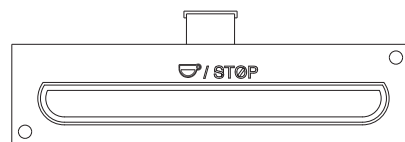
915-201 000



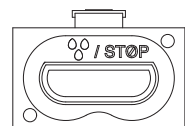




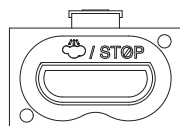
915-173 000 A



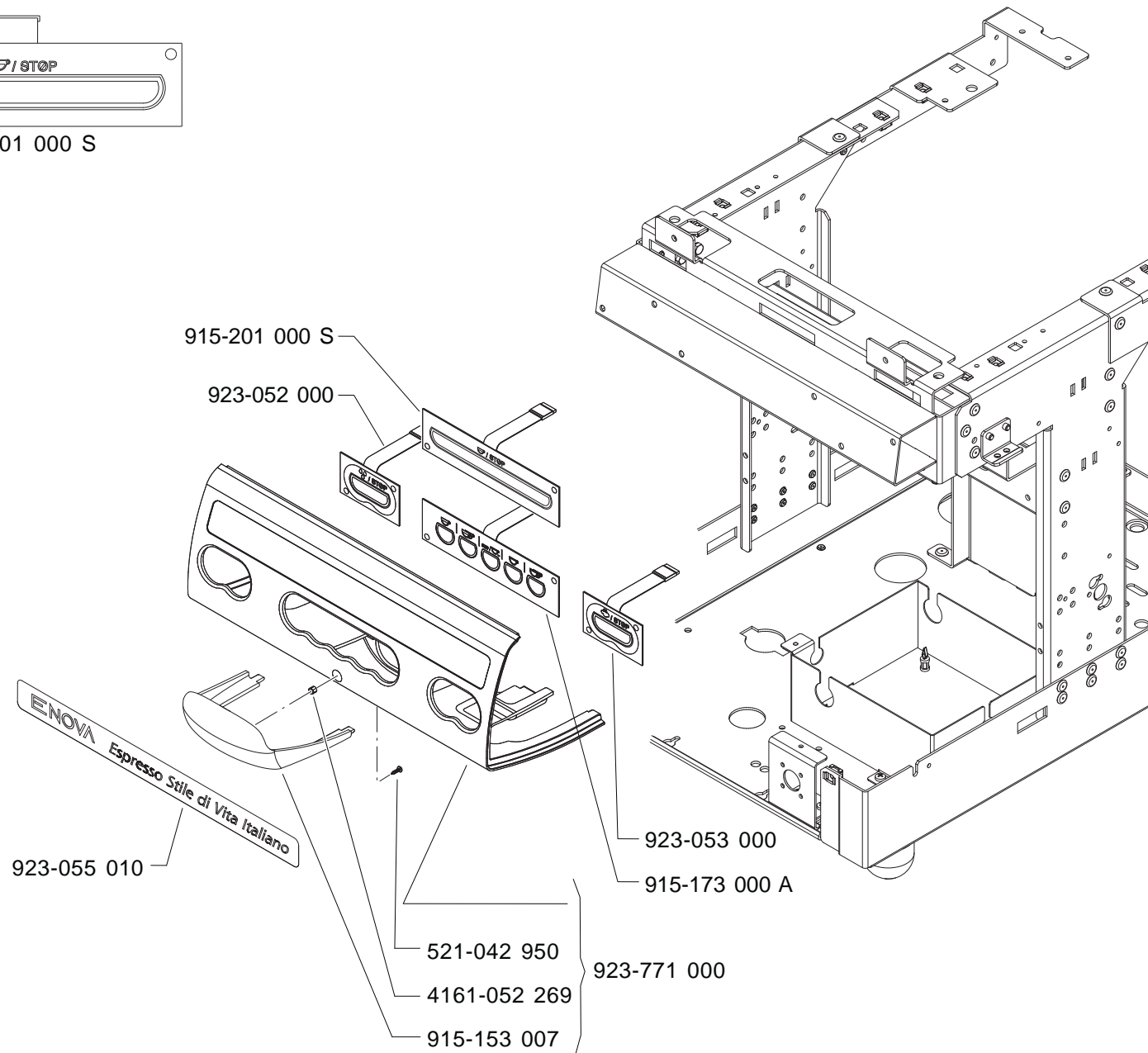
915-201 000 S

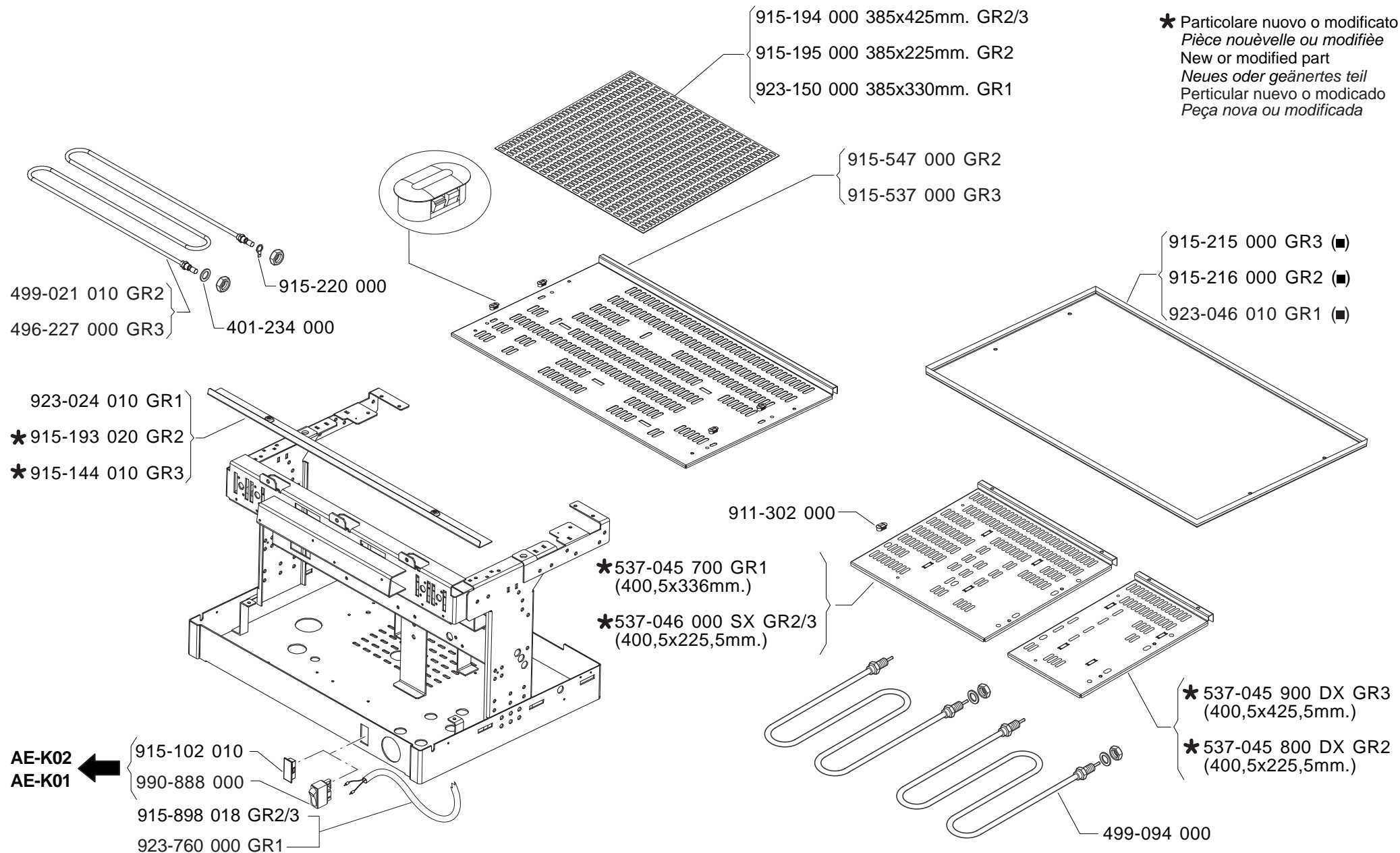


923-052 000



923-053 000

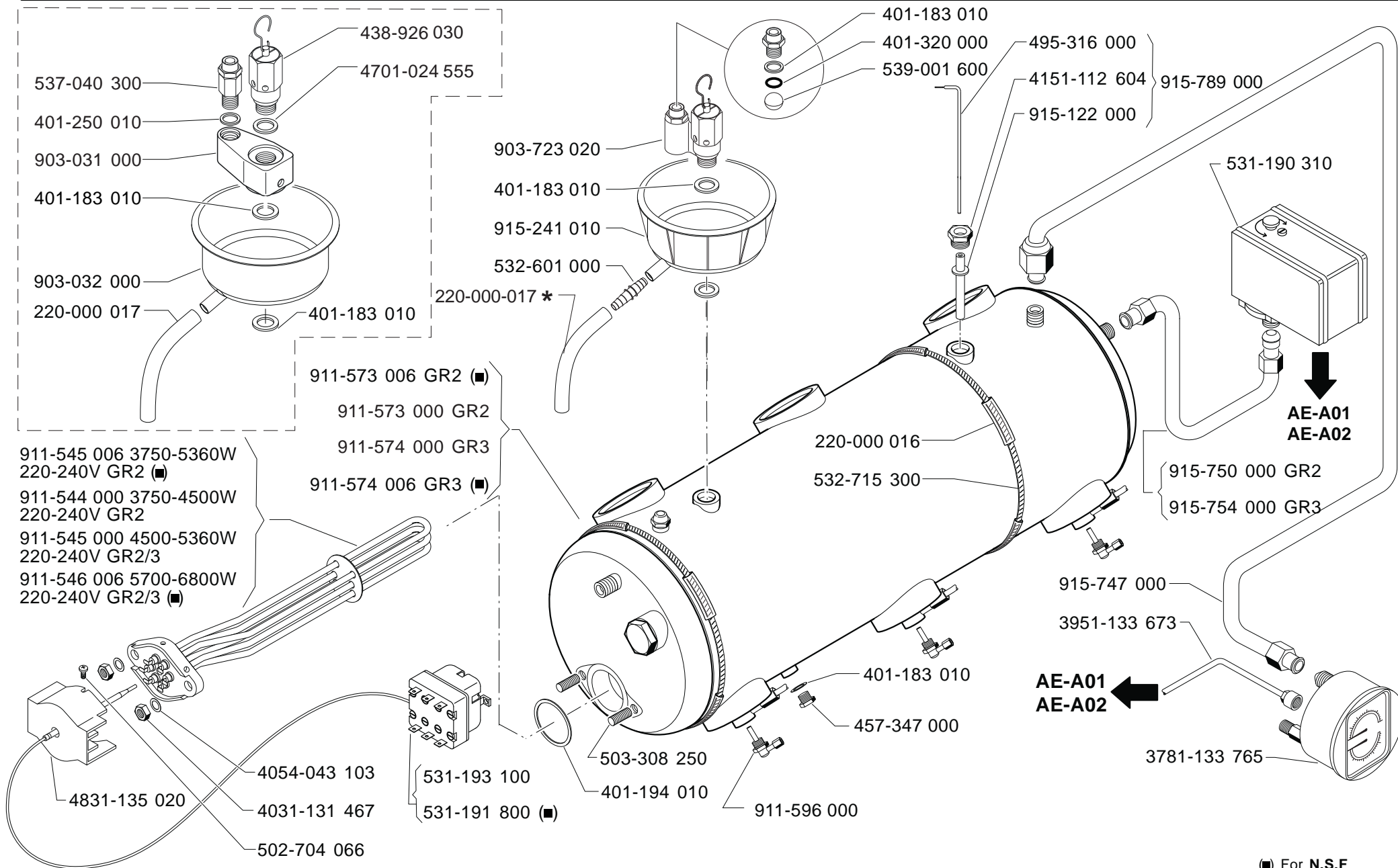




★ Particolare nuovo o modificato  
Pièce nouvelle ou modifiée  
New or modified part  
Neues oder geändertes Teil  
Particular nuevo o modificado  
Peça nova ou modificada

(■) For N.S.F

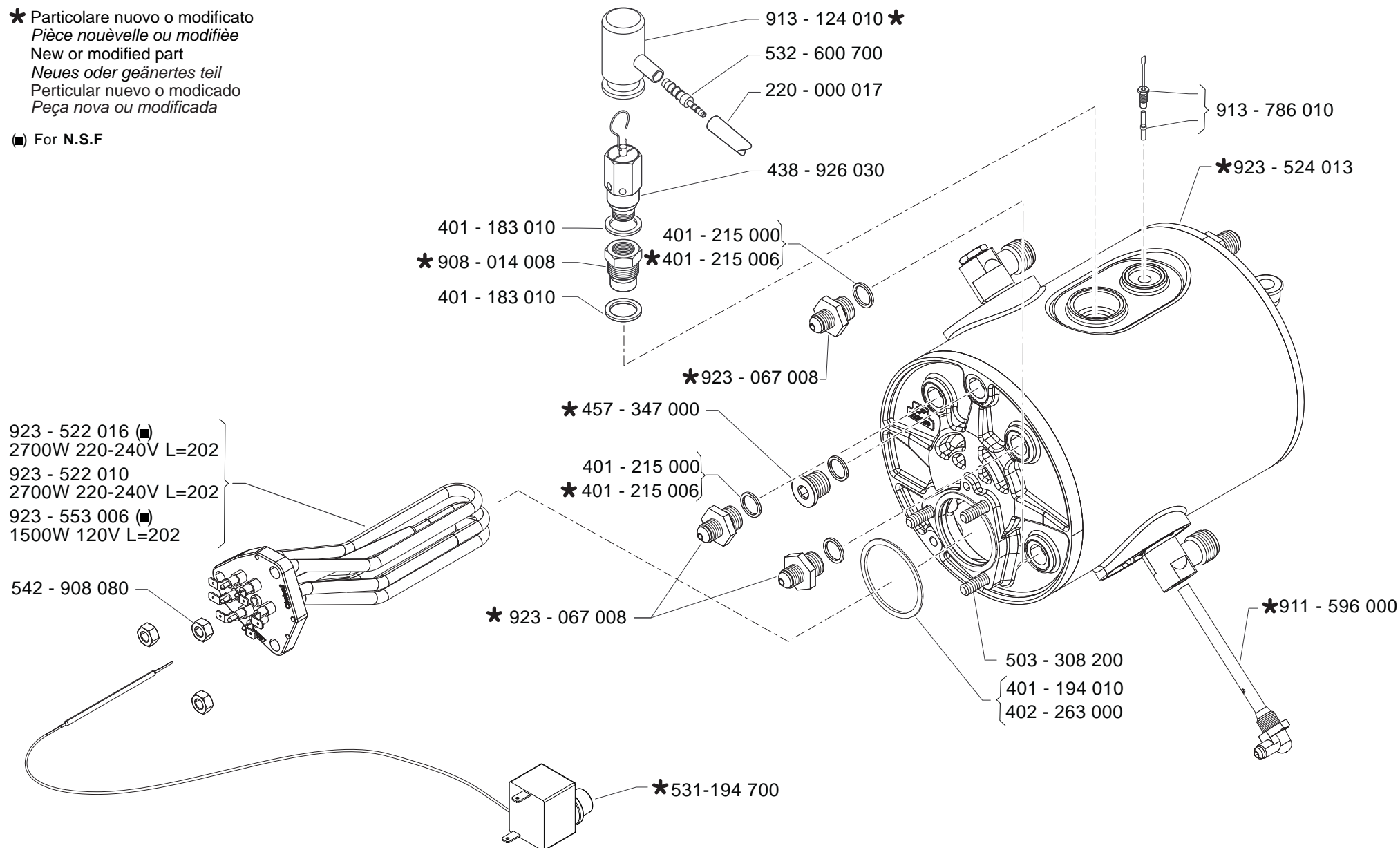




(■) For N.S.F

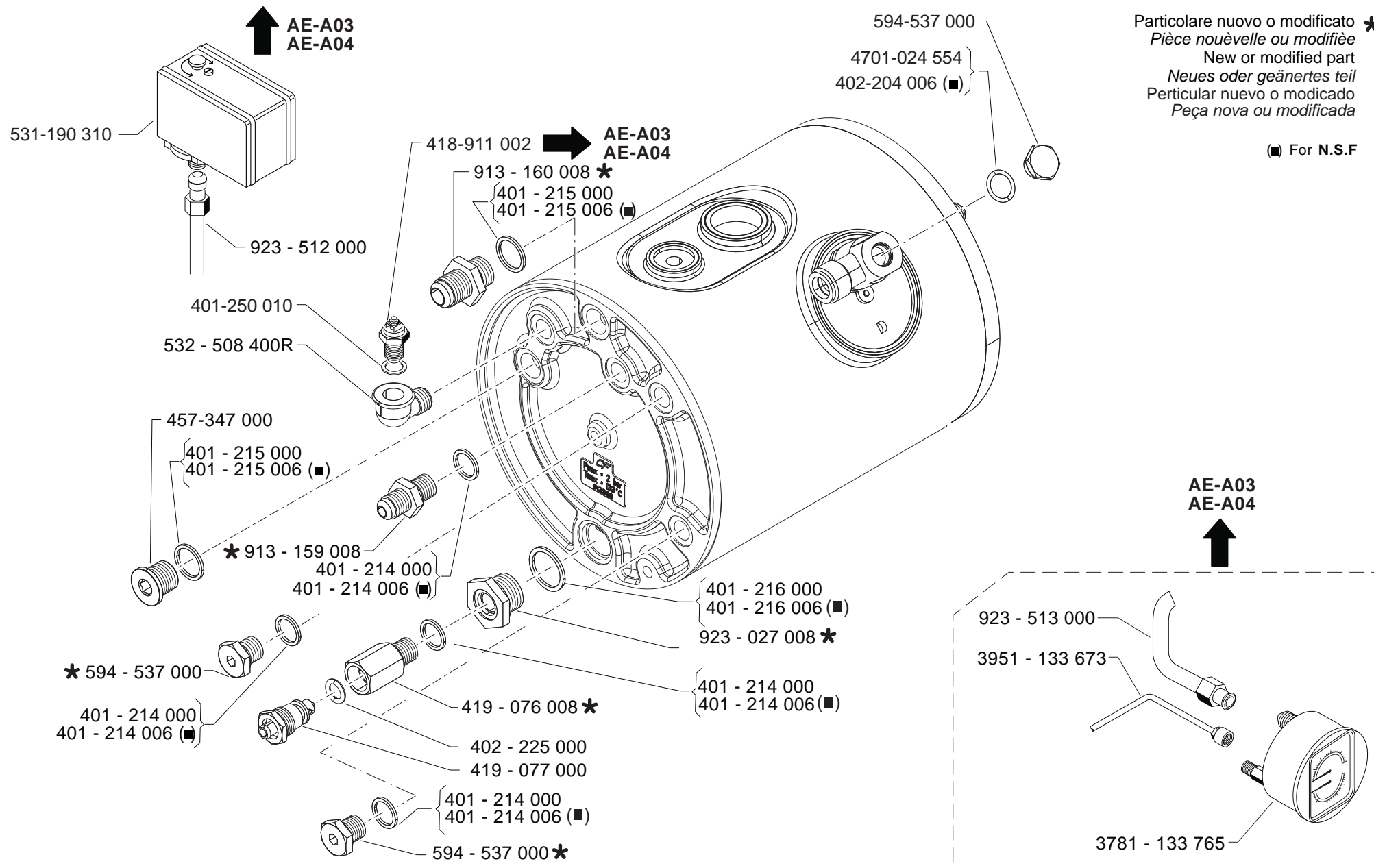
★ Particolare nuovo o modificato  
*Pièce nouvelle ou modifiée*  
New or modified part  
*Neues oder geänertes teil*  
Particular nuevo o modicado  
*Peça nova ou modificada*

(■) For N.S.F



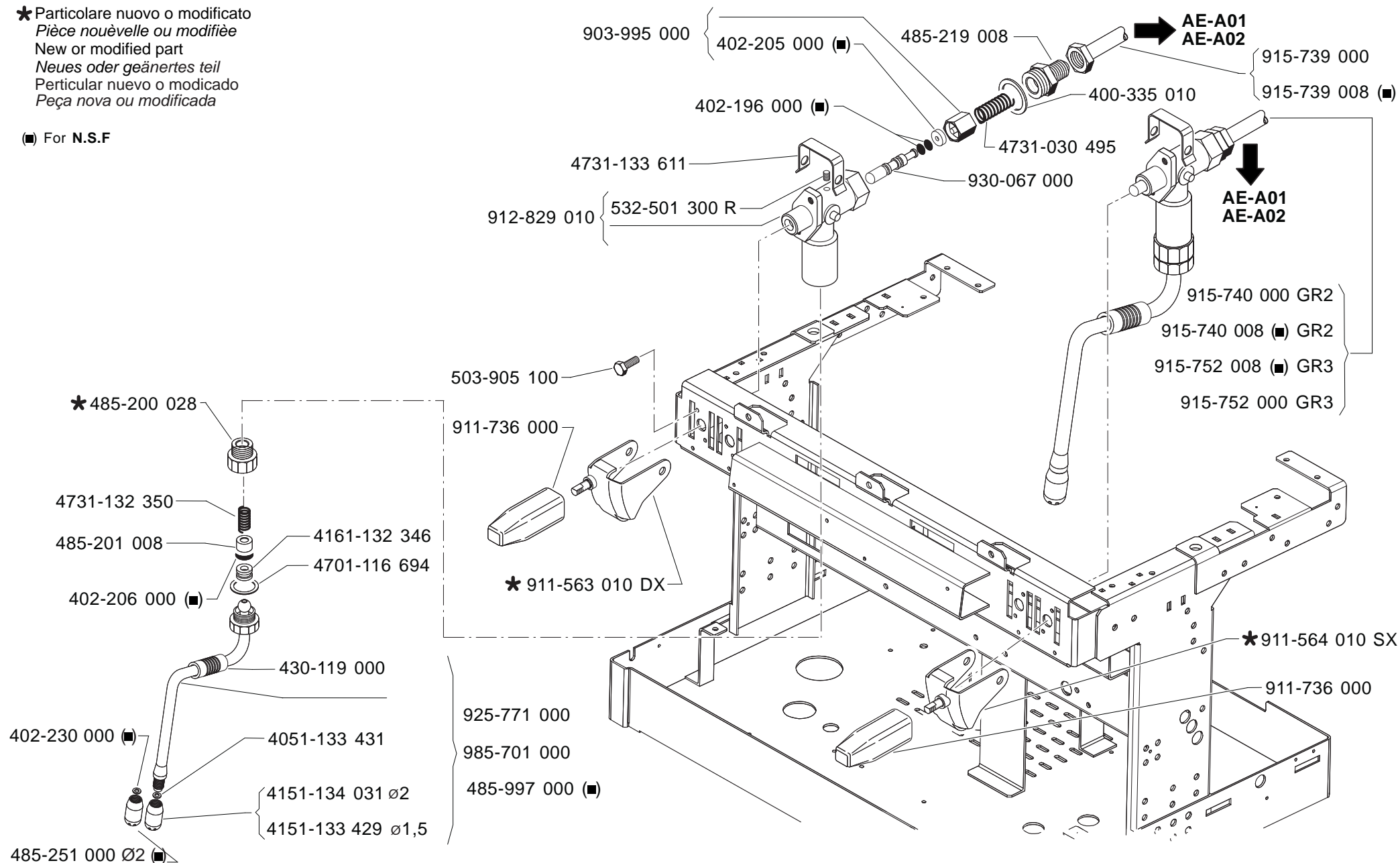
Particolare nuovo o modificato \*  
Pièce nouvelle ou modifiée  
New or modified part  
Neues oder geänertes teil  
Particular nuevo o modicado  
Peça nova ou modificada

(■) For N.S.F



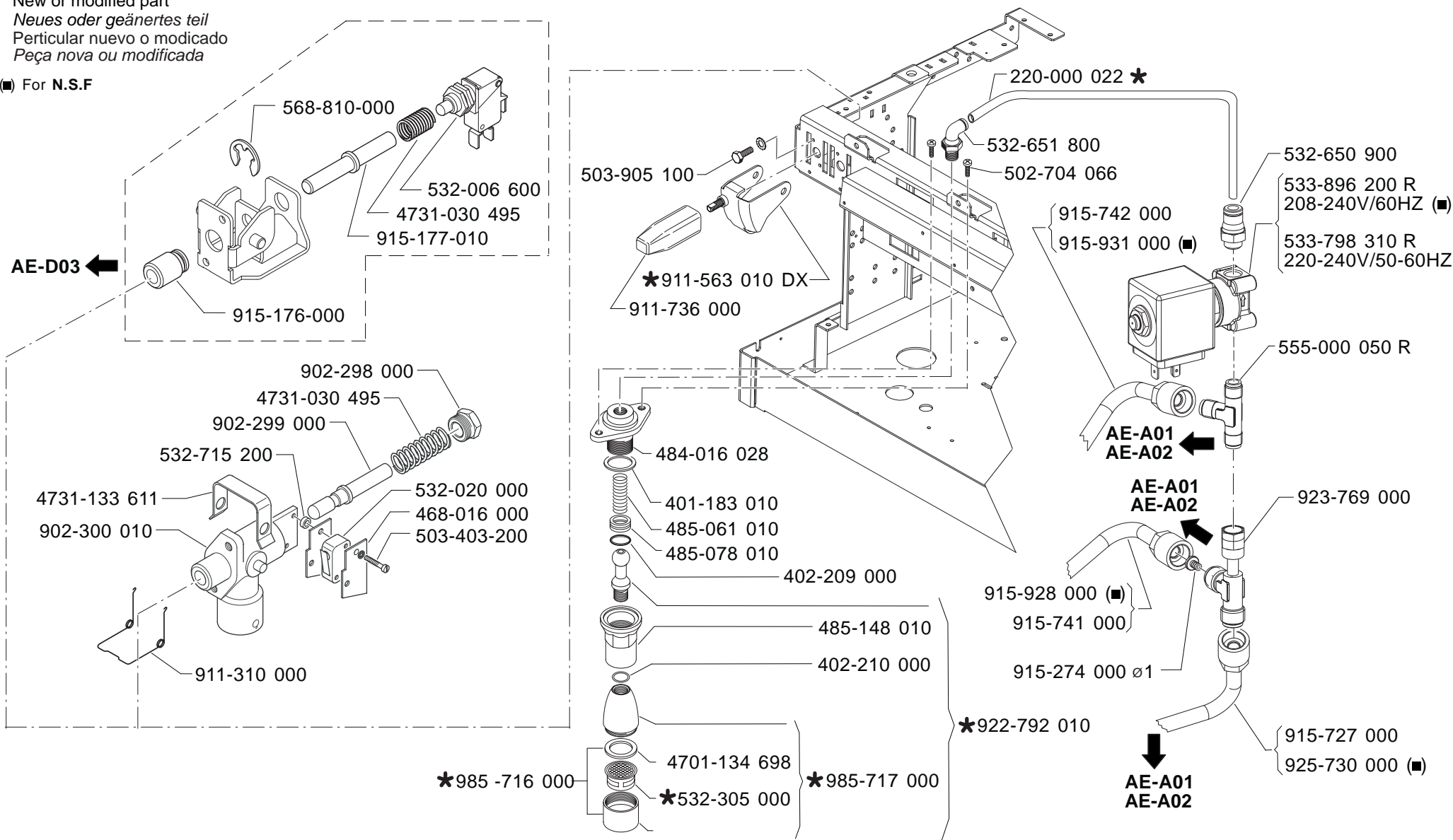
★ Particolare nuovo o modificato  
Pièce nouvelle ou modifiée  
New or modified part  
Neues oder geändertes Teil  
Particular nuevo o modificado  
Peça nova ou modificada

■ For N.S.F

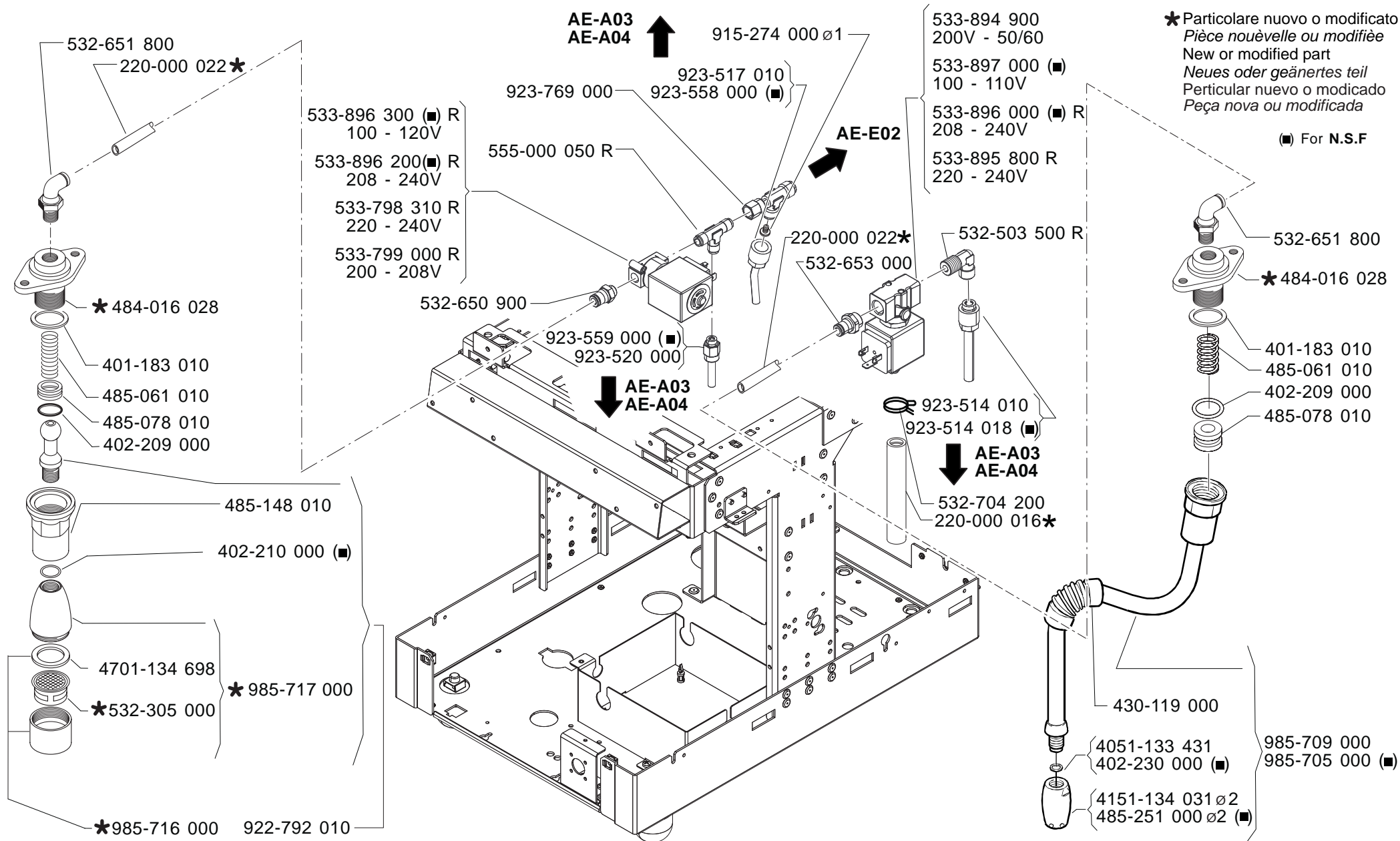


★ Particolare nuovo o modificato  
Pièce nouvelle ou modifiée  
New or modified part  
Neues oder geändertes teil  
Particular nuevo o modificado  
Peça nova ou modificada

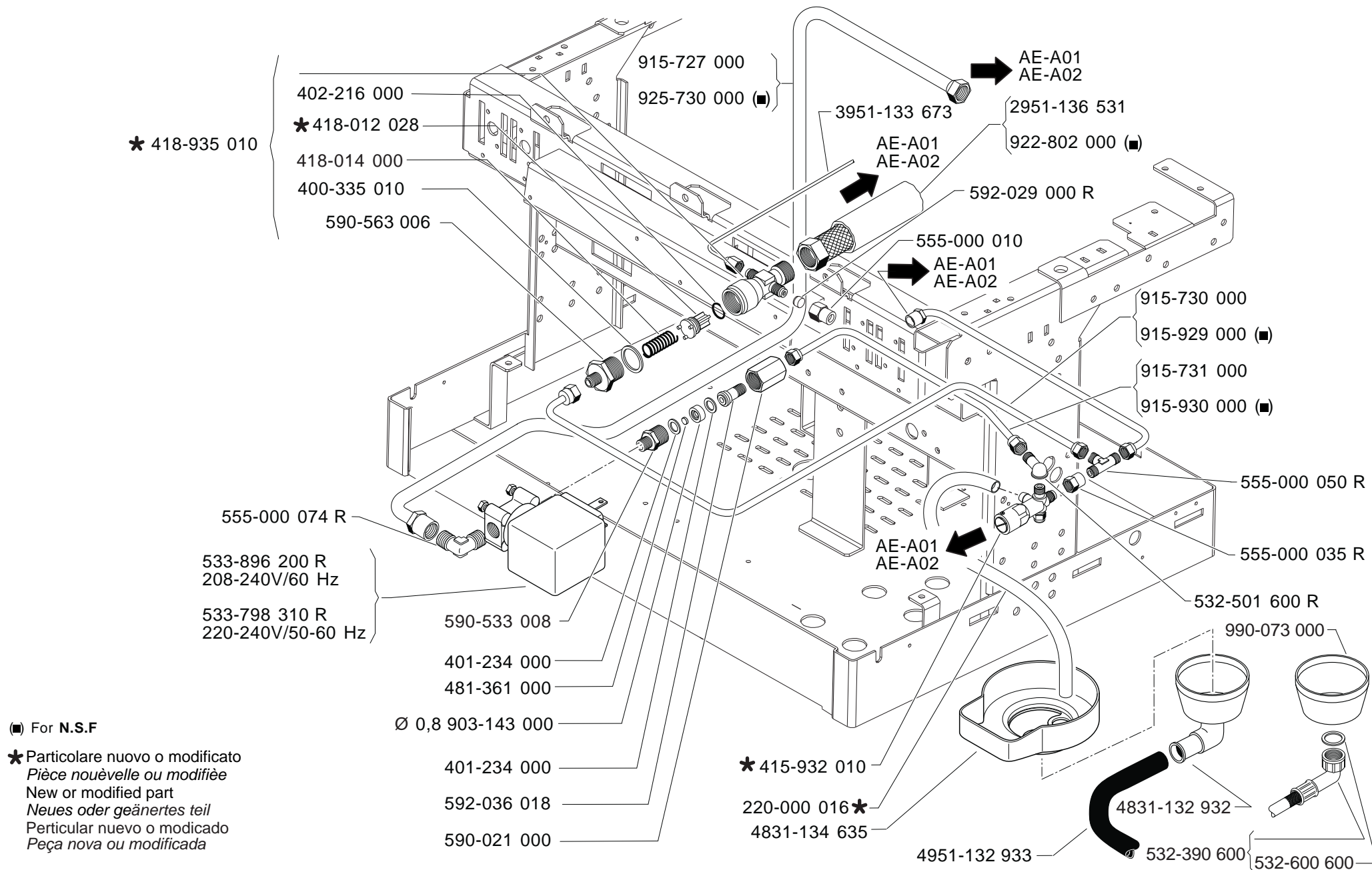
■ For N.S.F

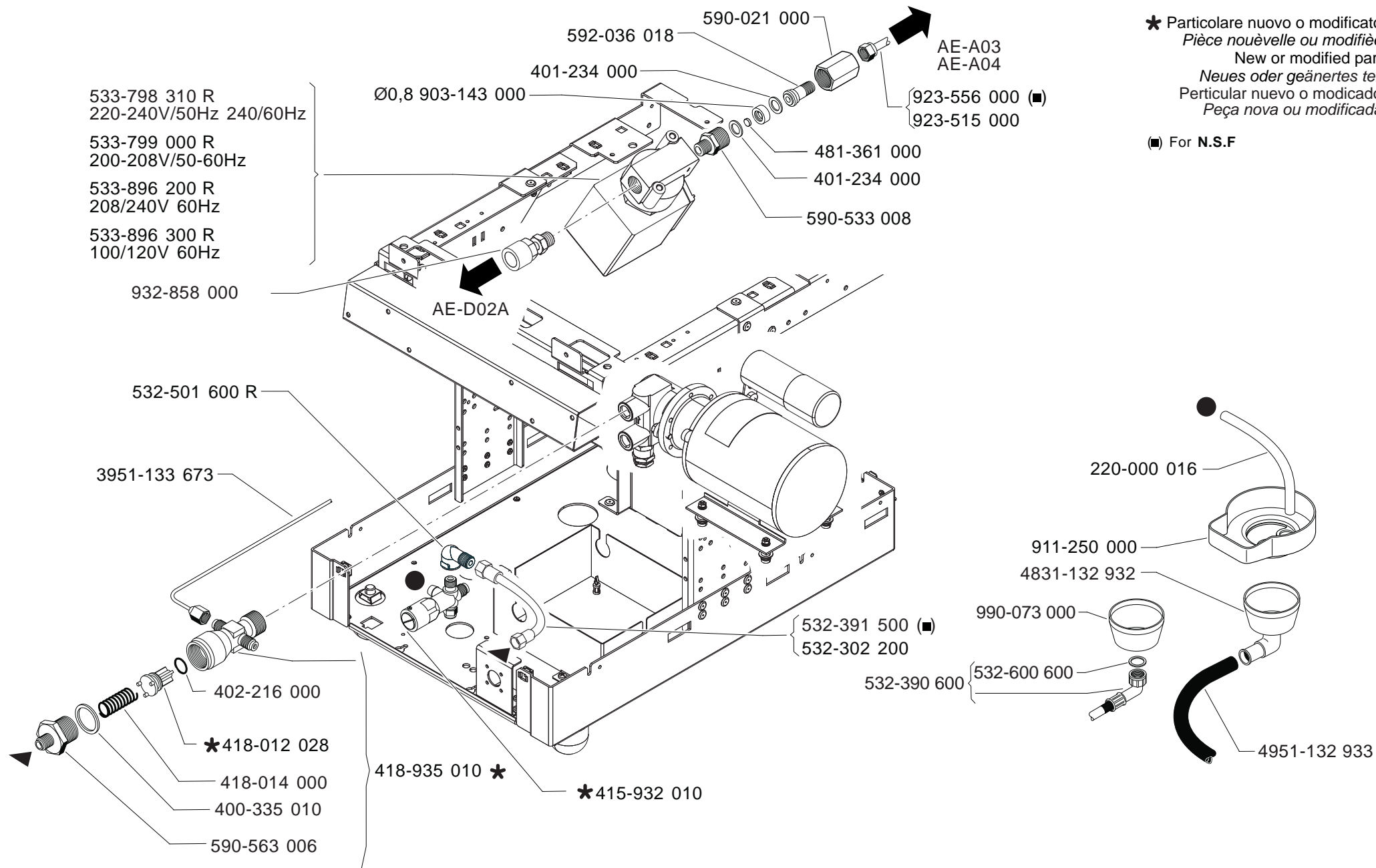






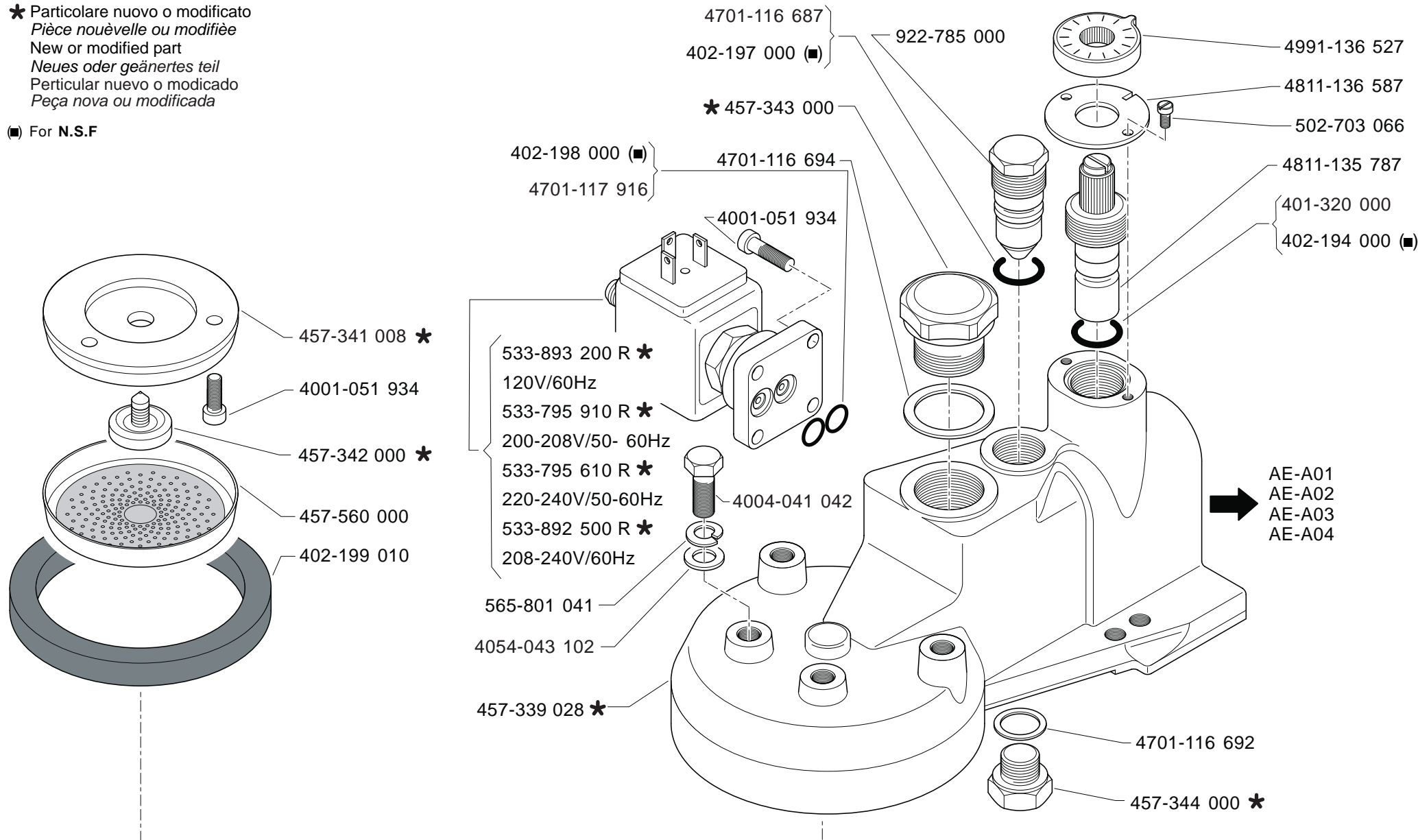


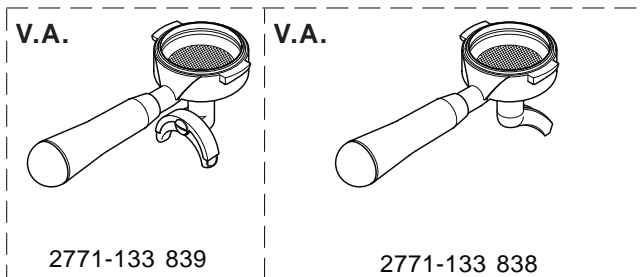
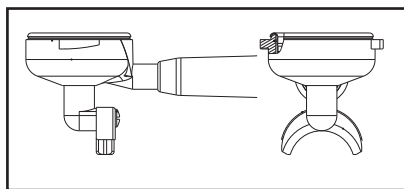




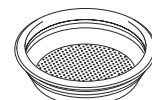
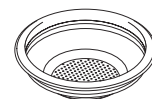
★ Particolare nuovo o modificato  
Pièce nouvelle ou modifiée  
New or modified part  
Neues oder geändertes Teil  
Particular nuevo o modificado  
Peça nova ou modificada

■ For N.S.F





4771-014 418  
Basso / Low

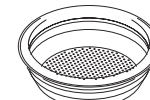
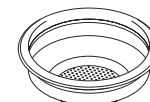


4771-016 575  
Basso / Low

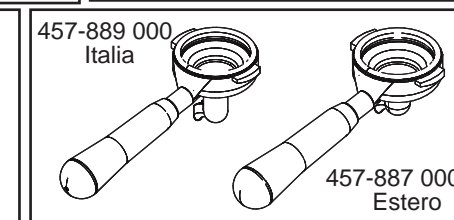
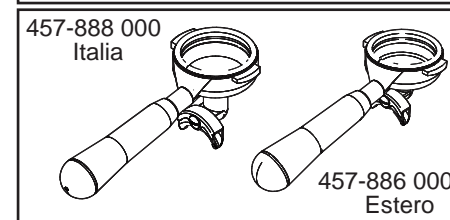
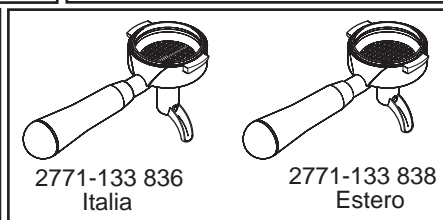
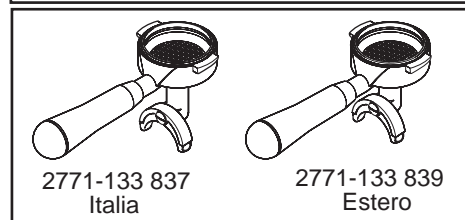
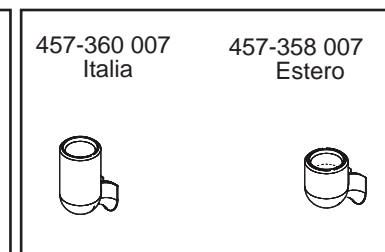
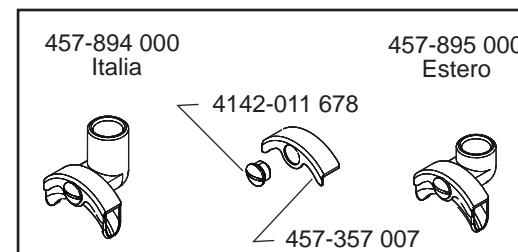
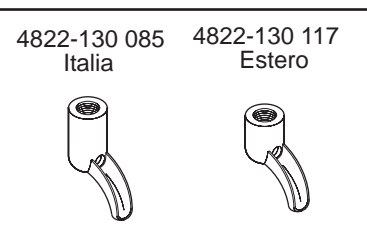
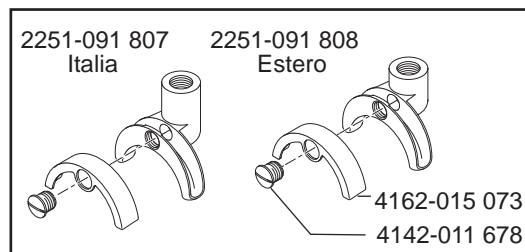
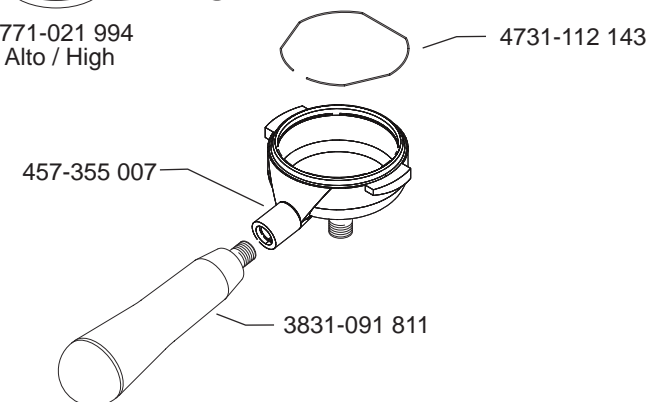
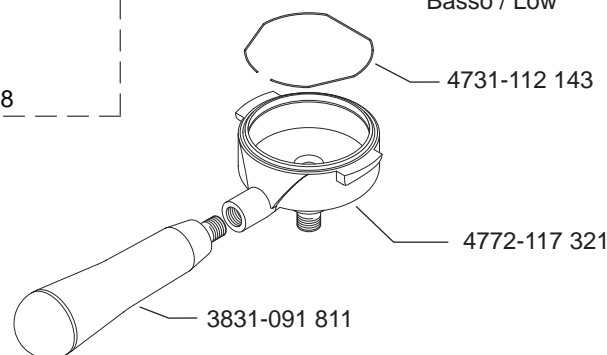
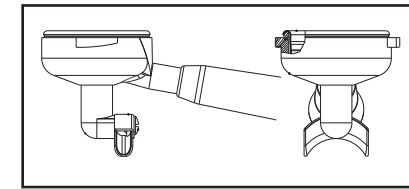
4771-021 902  
Ciego / Blind

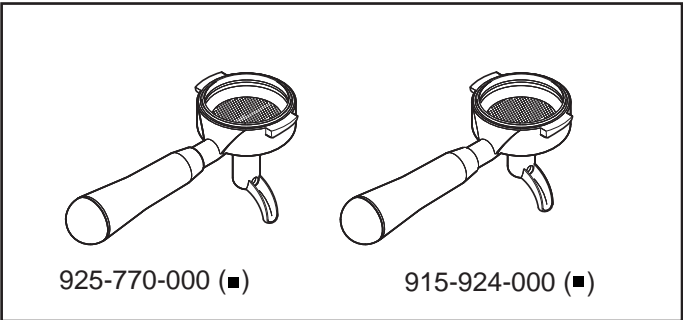
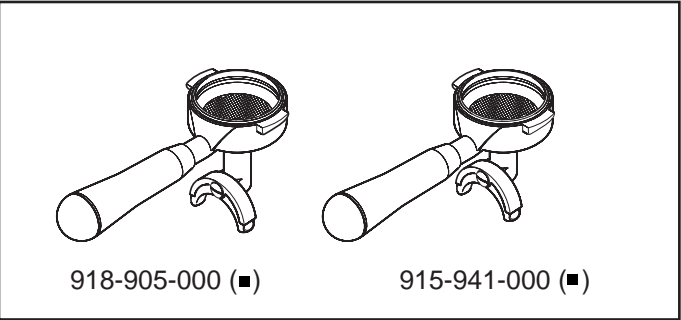
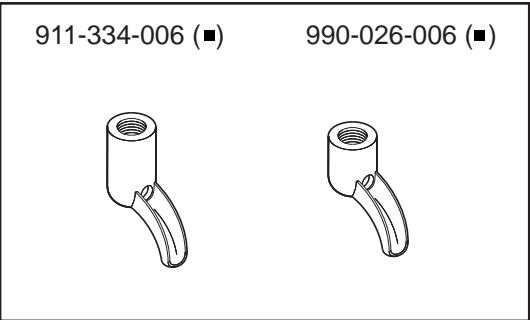
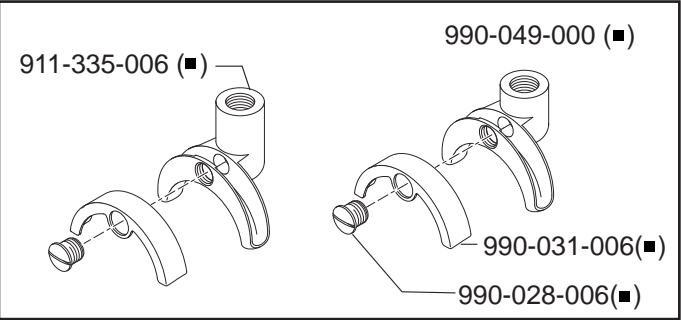
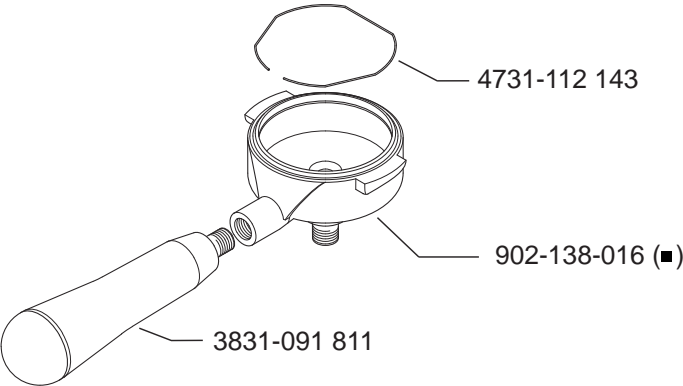
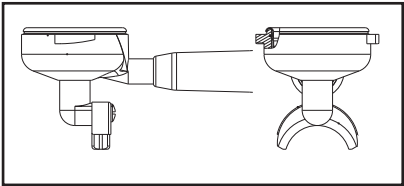


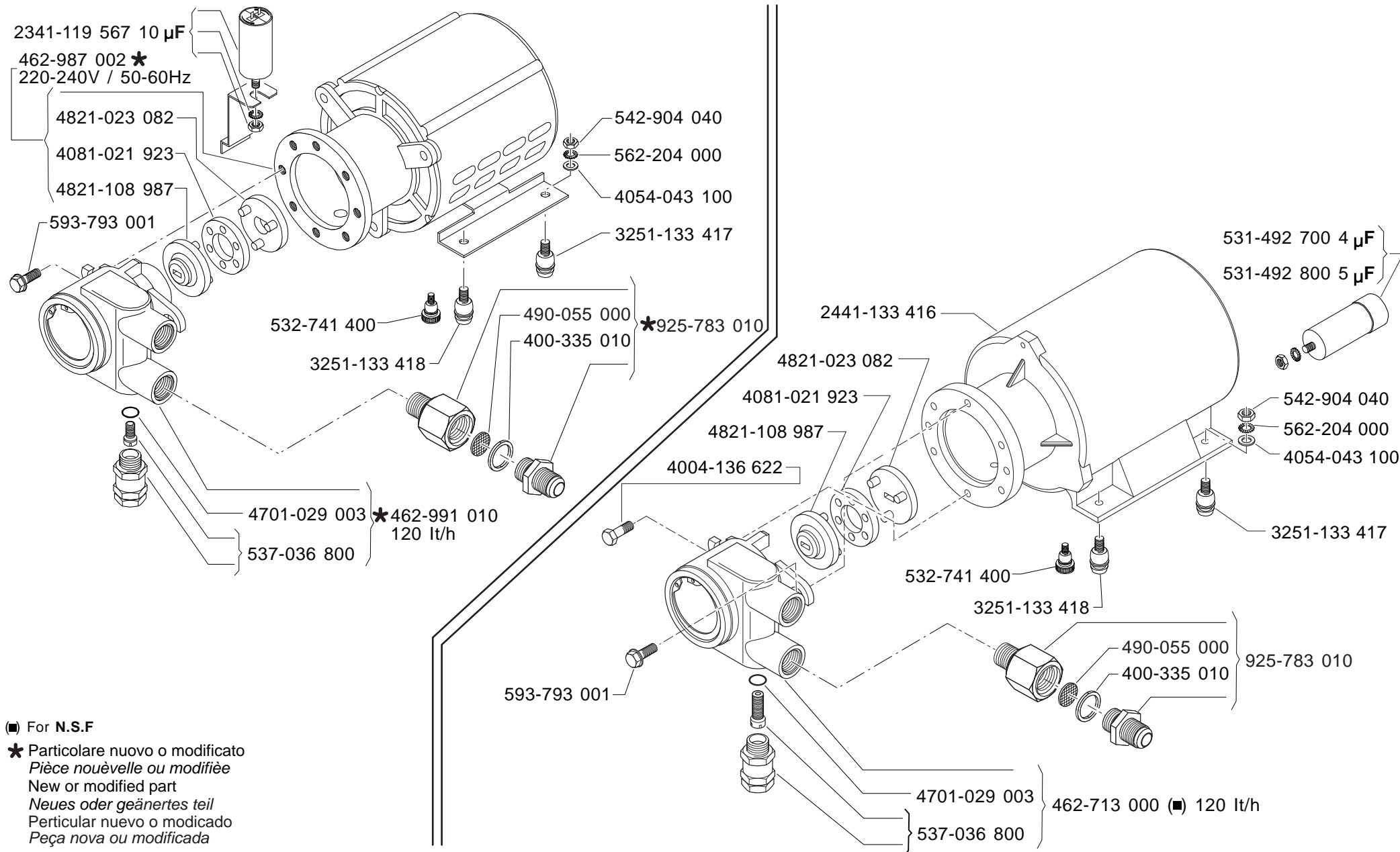
4771-021 830  
Alto / High



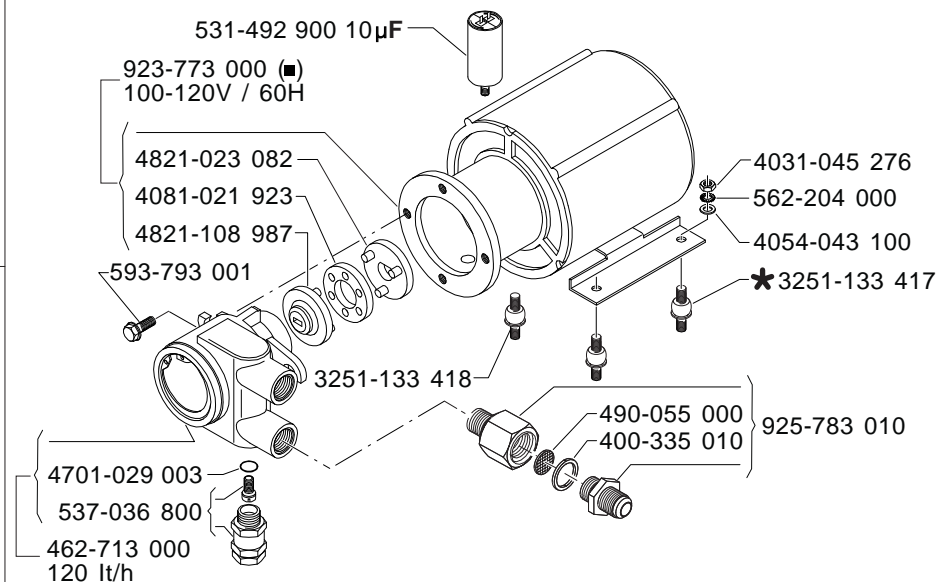
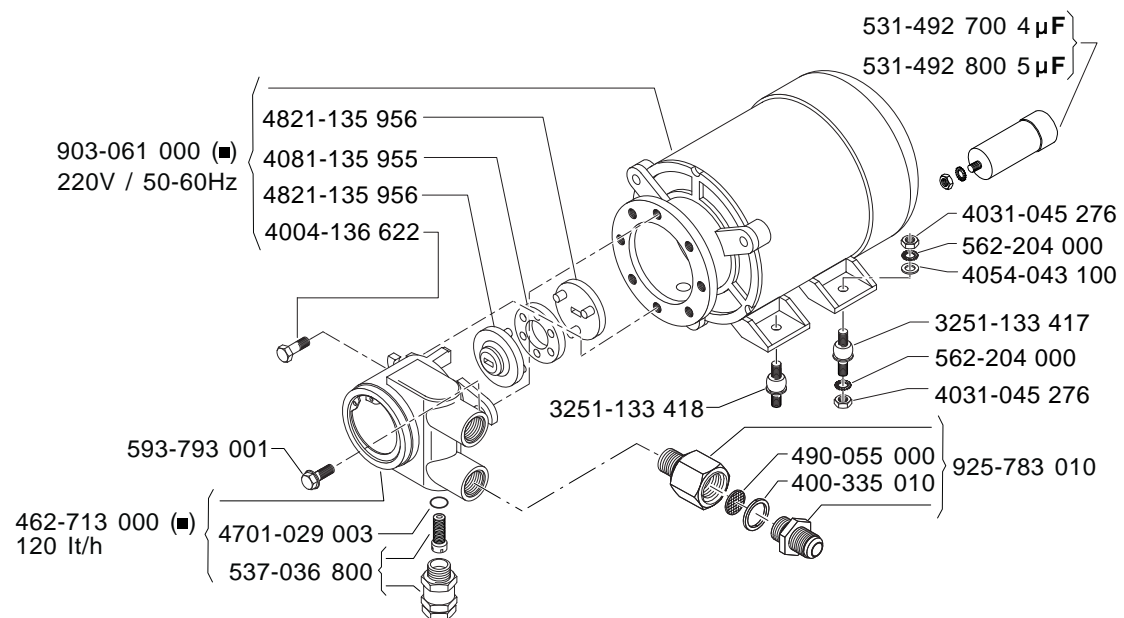
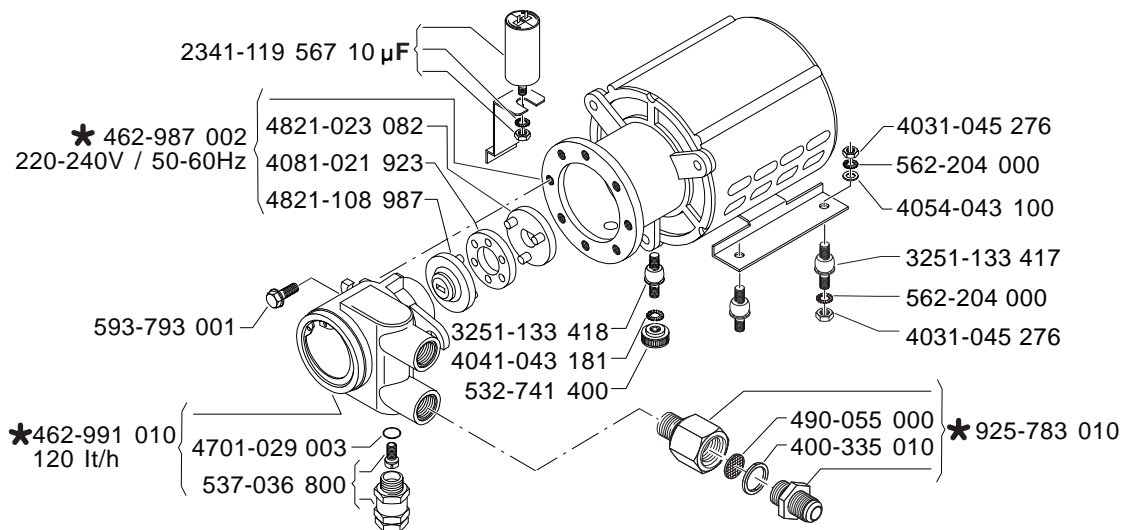
4771-021 994  
Alto / High





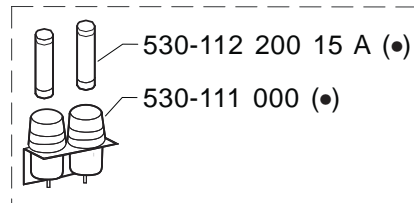




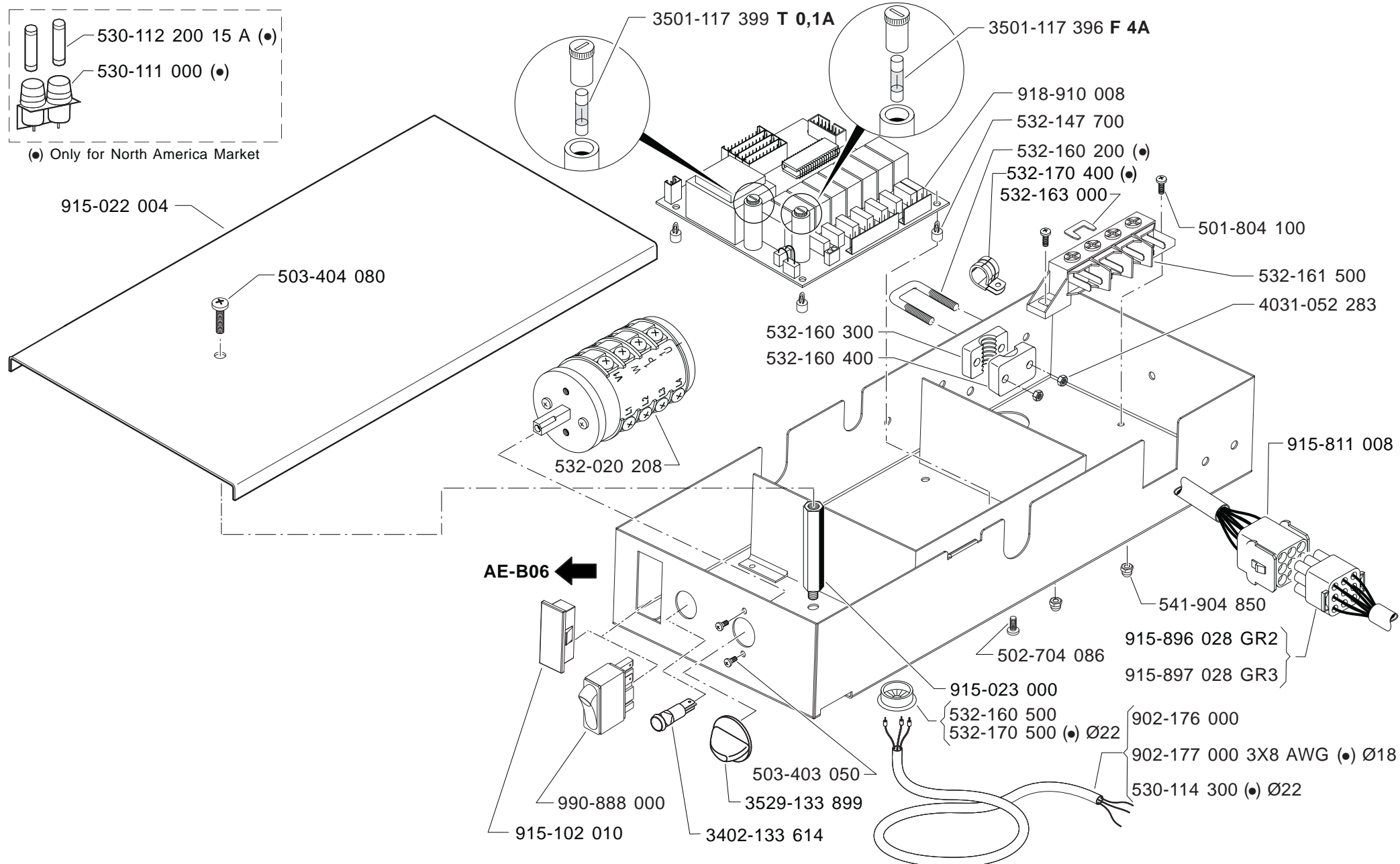


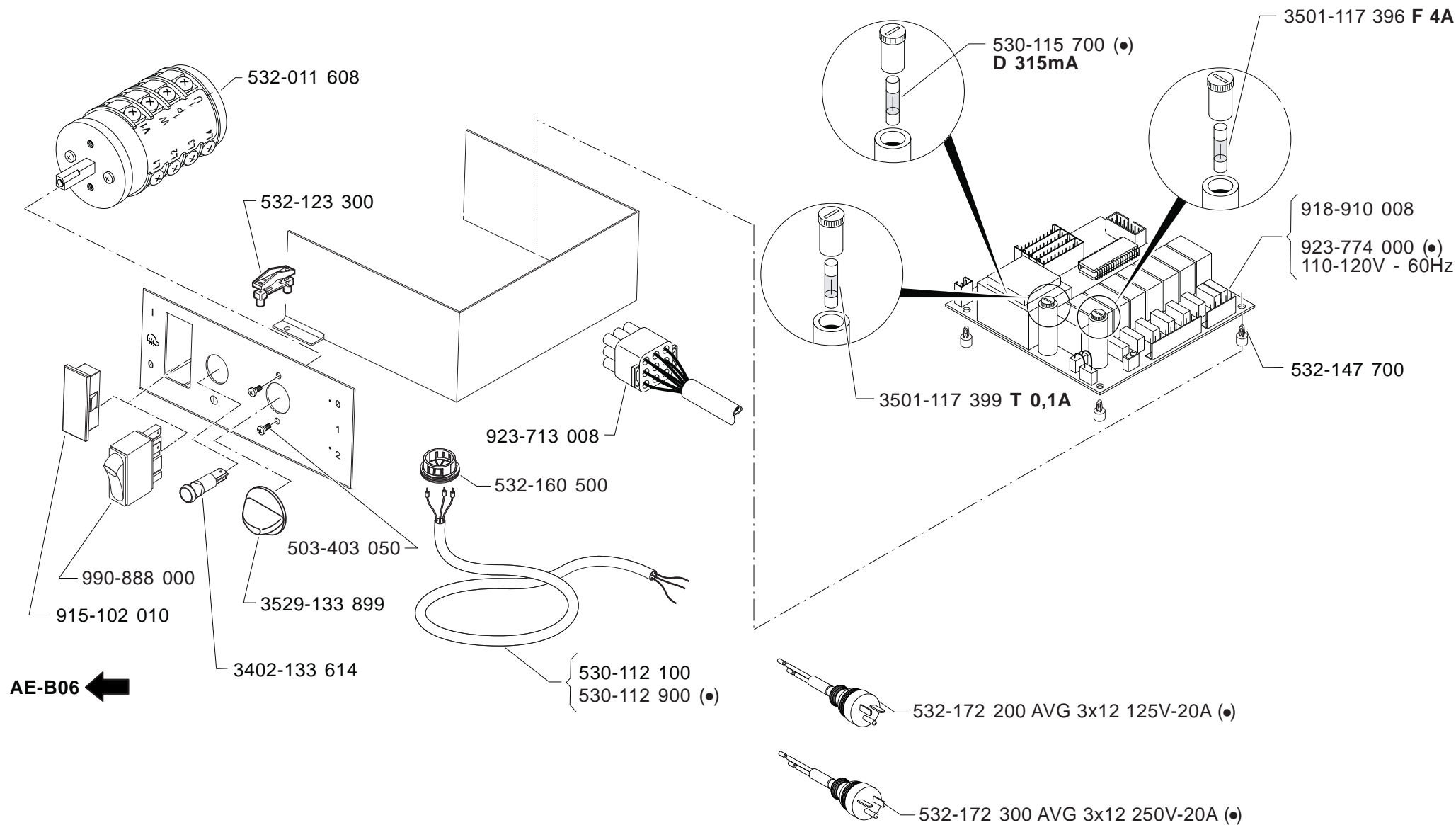
(■) For N.S.F

\* Particolare nuovo o modificato  
Pièce nouvelle ou modifiée  
New or modified part  
Neues oder geänertes teil  
Particular nuevo o modicado  
Peça nova ou modificada



(•) Only for North America Market





(●) Only for North America Market