

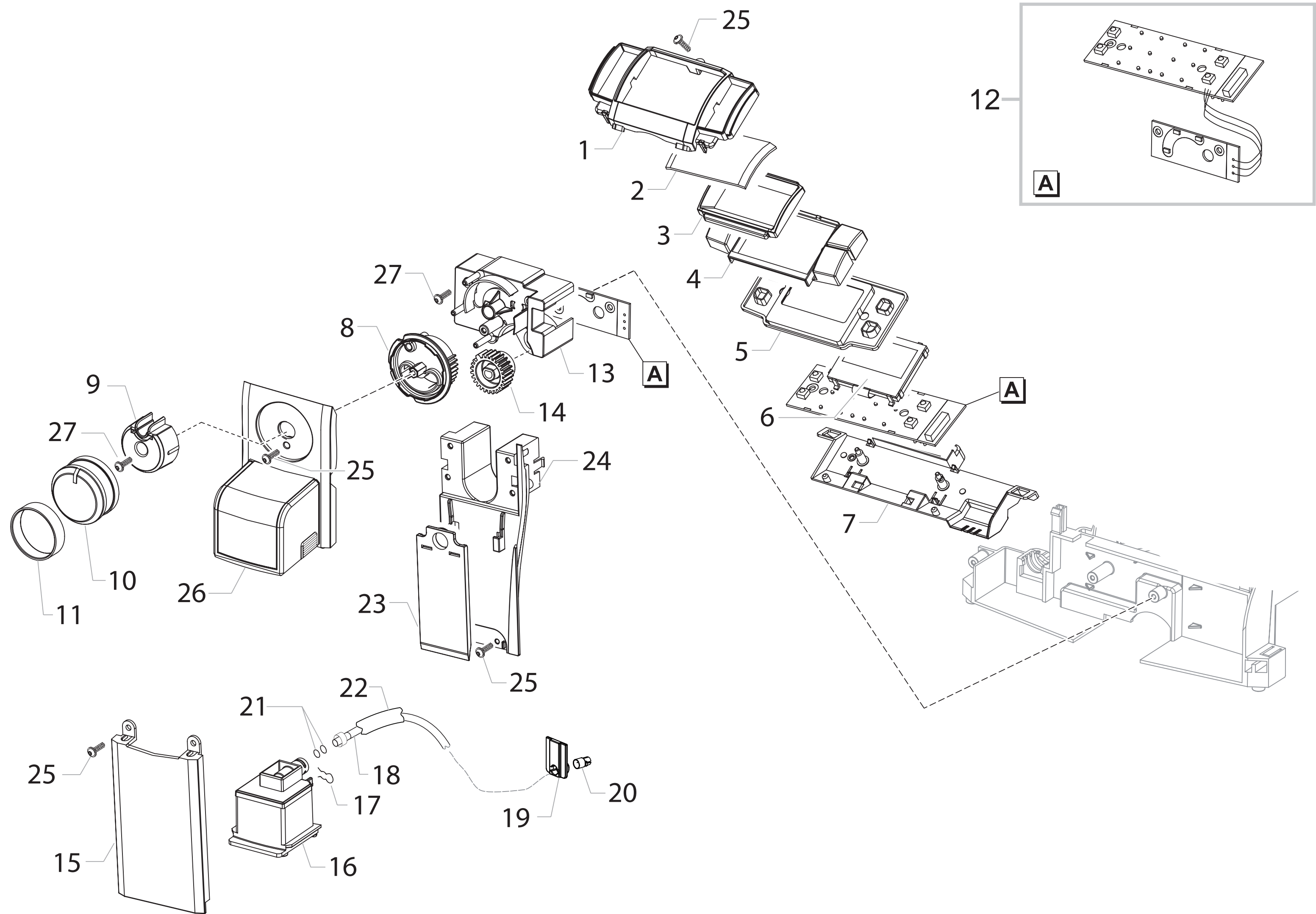
Pos	Article-Nr.	Description	Pos	Article-Nr.	Description
1	11005044	TUBET.KLUBER TRIBOSTAR SIL 2 5GR.SAECO	17	11013102	COP.TRAMOGGIA CAF.MAC.XSM GRI/NAT.
2	15002480	LIBR.ISTR.PSA HD8836/HD8837 XSM/H IT	18	11013107	CARC.SX XSM NER.
2	15002481	LIBR.ISTR.PSA HD8836/HD8837 XSM/H GB	18	11012727	AS.CARC.SX XSM INOX
2	15002482	LIBR.ISTR.PSA HD8836/HD8837 XSM/H DE	18	11025278	AS.CARC.SX XSM INOX VERN.ROS.
2	15002483	LIBR.ISTR.PSA HD8836/HD8837 XSM/H FR	18	11021374	CARC.SX XSM BIA.
2	15002484	LIBR.ISTR.PSA HD8836/HD8837 XSM/H ES	19	11012708	INS.FONDO CARC.XSM NER.
2	15002485	LIBR.ISTR.PSA HD8836/HD8837 XSM/H PT	20	11012681	COP.FONDO CARC.XSM NER.
2	15002486	LIBR.ISTR.PSA HD8836/HD8837 XSM/H NL	20	11013471	COPERT.FONDO CARC.XSM BIA.
2	15002487	LIBR.ISTR.PSA HD8836/HD8837 XSM/H SV	20	11022419	COP.FONDO CARC.XSM VERN.GMS
2	15002488	LIBR.ISTR.PSA HD8836/HD8837 XSM/H NO	21	17000432	FONDO CARC.XSMC NER.
2	15002489	LIBR.ISTR.PSA HD8836/HD8837 XSM/H FI	22	11012706	GRIGLIA VASCA REC.ACQ.XSM INOX
2	15002490	LIBR.ISTR.PSA HD8836/HD8837 XSM/H DA	23	11013184	GALLEG.VASCA REC.ACQ.XSM ROS.
2	15002491	LIBR.ISTR.PSA HD8836/HD8837 XSM/H GR	24	11021857	AS.VASCA REC.ACQ.XSM BIA.
2	15002492	LIBR.ISTR.PSA HD8836/HD8837 XSM/H PL	24	11022440	AS.VASCA REC.ACQUA XSM VERN.GMS
2	15002493	LIBR.ISTR.PSA HD8836/HD8837 XSM/H RU	24	11013229	AS.VASCA REC.ACQ.XSM NER.
2	15002494	LIBR.ISTR.PSA HD8836/HD8837 XSM/H HU	25	11012725	COP.CONT.CAF.GRA.C/GUARN.XSM GRI/NAT.
2	15002495	LIBR.ISTR.PSA HD8836/HD8837 XSM/H CS	26	11012724	CONT.CAF.GRA.XSM GRI/NAT.
2	15002496	LIBR.ISTR.PSA HD8836/HD8837 XSM/H SK	27	11012642	PIAST.SUPP.MC XSM NER.
2	15002497	LIBR.ISTR.PSA HD8836/HD8837 XSM/H UA	28	11013709	AS.CONN.3P.LIVELLO ACQ.XSM UL
2	15002498	LIBR.ISTR.PSA HD8836/HD8837 XSM/H SL	29	11000651	SCHEDA SENS.CAPACITIVO LIVEL.ACQ.P124
2	15002499	LIBR.ISTR.PSA HD8836/HD8837 XSM/H RO	30	12000450	VITE TCBR 3,5X12 PLAST.ZN-N
2	15002500	LIBR.ISTR.PSA HD8836/HD8837 XSM/H CR	31	11012709	CAS.RAC.FONDI XSM NER.
2	15002501	LIBR.ISTR.PSA HD8836/HD8837 XSM/H BG	32	11012716	AS.SPORT.DX XSM INOX
2	15002502	LIBR.ISTR.PSA HD8836/HD8837 XSM/H SR	32	11013161	AS.SPORT.DX XSM NER.
2	15002503	LIBR.ISTR.PSA HD8836/HD8837 XSM/H CHN	32	11025279	AS.SPORT.DX XSM INOX VERN.ROS.
2	15002504	LIBR.ISTR.PSA HD8836/HD8837 XSM/H KOR	32	11022260	AS.SPORT.DX XSM BIA.
2	15002577	LIBR.ISTR.PSA HD8836/HD8837 XSM/H TWN	33	11012713	CERNIERA SPORT.PLAST.DX XSM NER.
2	15002740	LIBR.ISTR.PSA HD8836/HD8837 XSM/H SA	34	11012714	CERNIERA CARC.POST.XSM NER.
3	147622800	PIEDINO PIANETA CAFFE' SILIC.TRASP.	35	NE03.038	INTERRUTTORE BIPOLARE FUSIT C1250AR
4	11001985	CAVO AL.KOREA 3X1 H05VV-F NER.L=1200	36	NE05.013	MICROINTERRUTTORE SAIA XGK52-81-J23
4	11004246	CAVO AL.TAIWAN HVCTF 3X2 C/C NER.L=1200	37	17000431	COP.INSONORIZZAZIONE MC XSMC NER.
4	11004247	CAVO AL.CINA RVV 3X1 C/C.NER.L=1200	38	11013109	AS.CARC.POST.XSM NER.C/INS.INOX
4	183911050	CAVO AL.SCH.3X1 H05VV-F NER.L=1200	38	11013104	CARC.POST.XSM NER.
4	183921950	CAVO AL.USA SJT3 UL 16AWG NERO L=1200	38	11025276	AS.CARC.POST.XSM NER.C/INS.INOX VERN.ROS
4	183930650	CAVO AL.CH 3X1 H05VV-F NER.L=1200MM	38	11013600	CARC.POST.XSM BIA.
4	183970350	CAVO AL.UK H05VV-F 3X1 NERO L=1200MM	39	11013704	COP.ACCESSO INFRAROSSI XSM TRASP.
5	11013206	POM.REG.MACIN.CAF.XSM NER.	40	149213000	TAPPO POMELLI CONT.CAF.GRA.TRASP.
6	11013160	AS.COP.CONT.ACQUA XSM INOX	41	120350604	ANELLO 6 UNI 7434 BRUN.
6	11025269	AS.COP.CONT.ACQ.XSM INOX VERN.ROS.	42	11012301	PROT.SCHEDA PWR/CPU P0057 NER.
7	11013093	AS.CONT.ACQ.XSM GRI/NAT.	43	11012593	AS.CPU+SW XSM V2 230V
8	224640200	AS.FILTRO EST.CONT.ACQ.BIA.	43	11026606	AS.CPU+SW XSM/H V3 230V
9	140328461	OR METRICO 0190-10 IN EPDM	43	11026608	AS.CPU+SW XSM/H V3 120V
10	11003672	MOLLA CILINDR.VALV.CONT.ACQ.P0049 INOX	43	11023761	AS.CPU+SW XSM/P V2 120V
11	11003673	INS.VALV.CONT.ACQ.P0049 GRI.	44	20006885	KIT INSERTI SCATOLA XSM IN PS-E
12	11003671	VALV.CONT.ACQ.P0049 TRASP.	45	129913202	VITE TCB 3X8 PLAST.ZN-B
13	11001298	COP.VALV.DUCKBILL P0049 NER.	46	13001268	SCATOLA LIT.XSM/H PSA SYNTIA DGT/CL WE
14	11012718	AS.COP.SUP.CARC.XSM/H INOX	46	13001269	SCATOLA LIT.XSM/H PSA SYNTIA DGT/CL CEE
14	11025243	AS.COP.SUP.CARC.XSM/H INOX VERN.ROS.	46	13001372	SCATOLA LIT.XSM/H PSA SYNTIA DGT/CL USA
15	11025026	PIAST.ADES.C/LOGO PHILIPS-SAECO ARG.	47	146680850	MISURINO CAF.SMART NER.
16	11027486	TAPPO COP.SUP.CARC.V2 XSM CROM.	48	11022065	PIAST.ADES.C/LOGO SYNTIA ARG.
16	11012921	TAPPO COP.SUP.CARC.XSM CROM.	49	12000280	PRESA A VASCH.C/SMUSSI EN 60320 C 13
50	11021826	AS.COP.CAS.FONDI XSM INOX			
50	11025244	AS.COP.CAS.FONDI XSM INOX VERN.ROS.			
51	21001404	ACC SAE BRITA UNI.WAT.FILTERX1 EUR-ASIA			
52	129912504	VITE TCBR 3,5X14 PLAST.ZN-N			

E74158

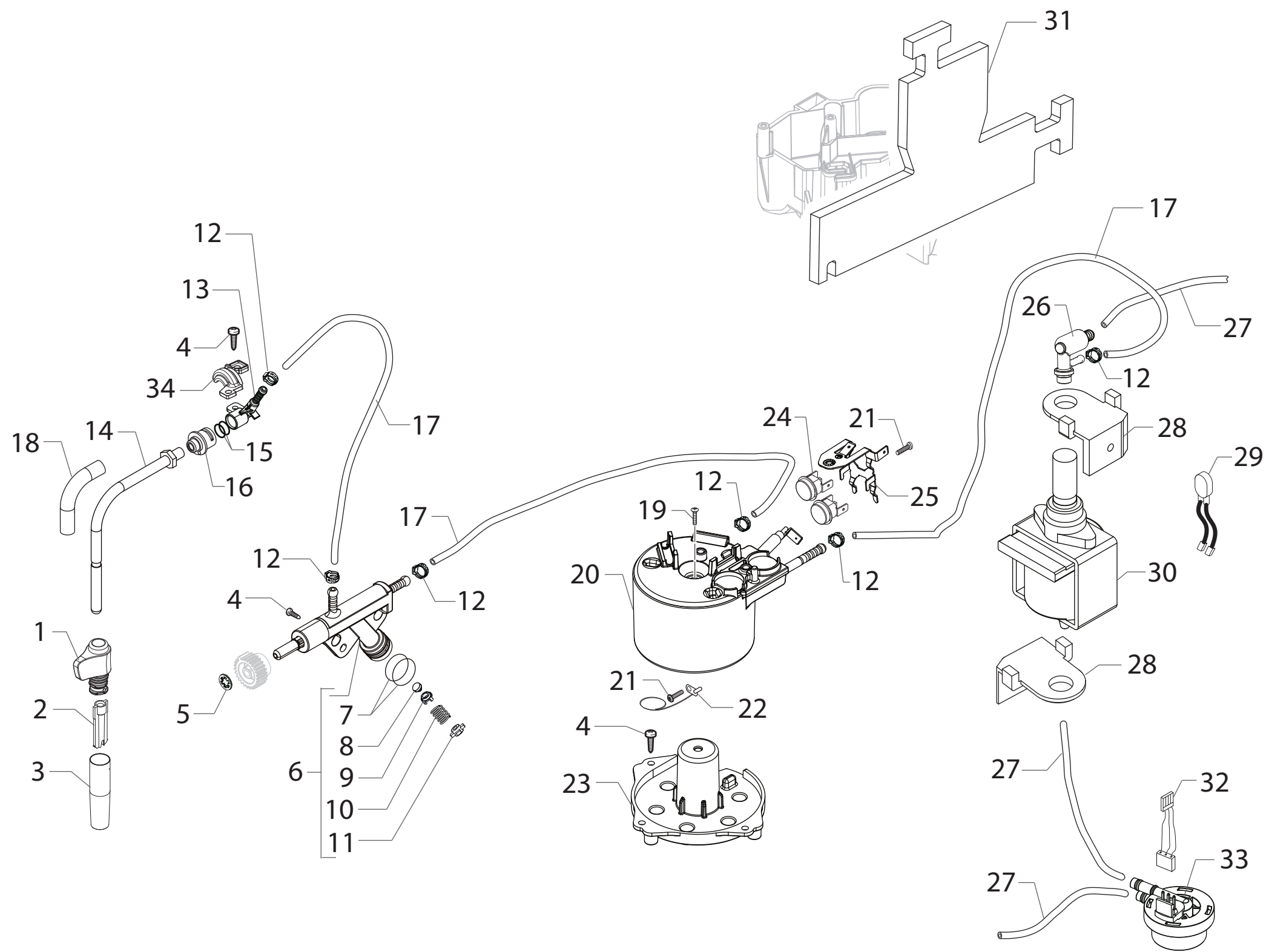
Pos	Article-Nr.	Description
53	0301.961	STICKER TEST DUREZZA ACQUA
54	17000064	INS.BLOCCAG.SENS.CAPACITIVO XSM NER.

HD8836, HD8837

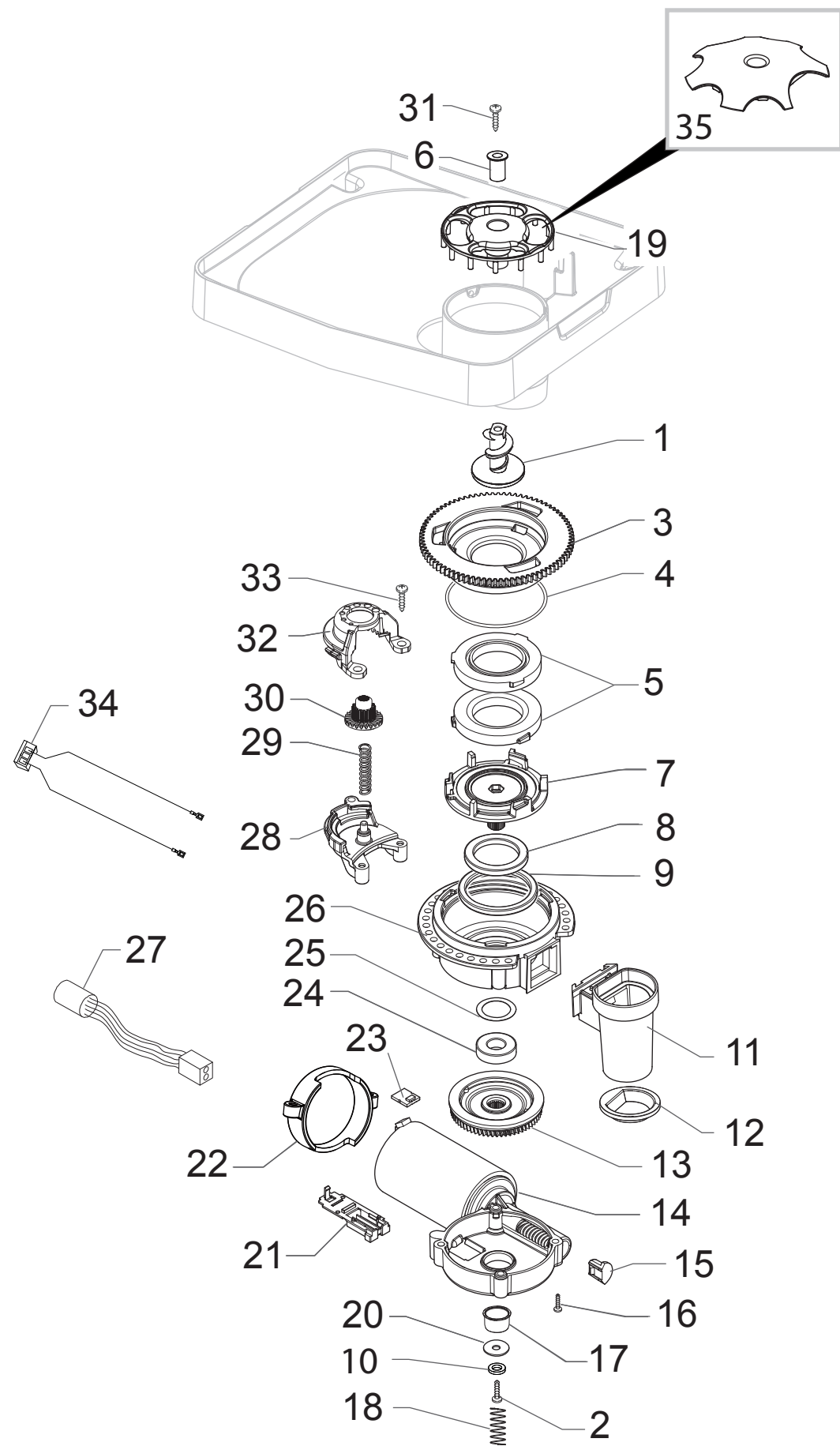
Pos	Article-Nr.	Description
-----	-------------	-------------



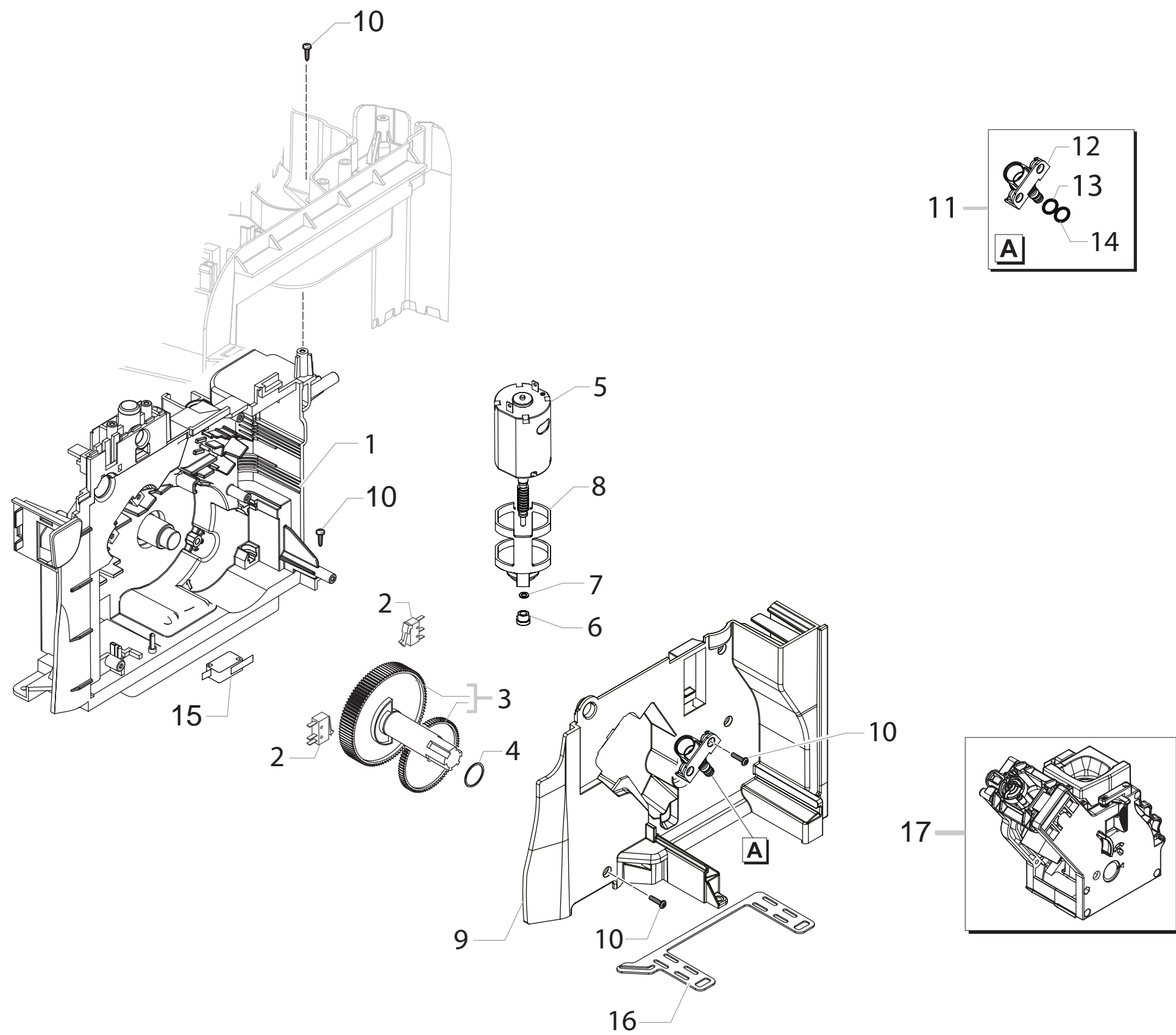
Pos	Article-Nr.	Description	Pos	Article-Nr.	Description
1	11013092	COPERTURA TASTIERA XSM CROM.			
2	17000480	VETRINO DISPLAY V2 XSM/H TRASP.			
3	11012700	CORNICE DISPLAY XSM/H NER.			
4	11013098	TASTIERA XSM/H CROM.SER.			
5	11012698	GUARNIZ.DISPLAY XSM/H NER.			
6	20006982	KIT RIC.AS.CPU+SW C/DISPL.XSM/H 230V			
6	20006983	KIT RIC.AS.CPU+SW C/DISPL.XSM/H 120V			
6	12001612	DISPLAY GRAFICO CMG122647Z01ZBW XSM/H			
7	11012699	SUPP.DISPLAY XSM/H NER.			
8	11013117	AS.SUPP.POM.COMANDI C/CALAM.XSM NER.			
9	11012701	POMEL.COMANDI XSM NER.			
10	11013091	COP.POM.COMANDI XSM/H ZAMA CROM.			
11	11021454	INS.COPERT.POMEL.COMANDI XSM NER.			
12	11012820	AS.SCHEDE INTERF.DISPL+CABL.UL XSM/H			
13	11012704	SUPP.SCHEDA POM.XSM NER.			
14	11004120	INGR.Z=26 VAP/ACQ.P0057 NER.			
15	11013096	FRONT.XSM CROM.			
16	11013070	AS.EROG.CAF.SALD.XSM NER.			
17	9011.144	FORCELLA X TUBO D=4 INOX			
18	11004132	AS.TUBO TEFLON 2X4 L=250MM+1BOC.DIST13MM			
19	11005100	PIASTRINA X BOCCOLA TUBO TEFLON 4X2 P124			
20	11005101	BOCCOLA X TUBO TEFLON 4X2 P124			
21	140328059	OR 2015 IN SILICONE PTFE/FDA			
22	149361200	TUBO SILICONE NERO 7,5X9,3 IN MATASSA			
23	11013411	SUPP.PARTE MOB.EROG.CAF.XSM NER.			
24	11012707	SUPP.FRONT.XSM NER.			
25	12000450	VITE TCBR 3,5X12 PLAST.ZN-N			
26	11021760	AS.SUPP.EROG.CAF.XSM CROM.SER.			
27	129912504	VITE TCBR 3,5X14 PLAST.ZN-N			



Pos	Article-Nr.	Description	Pos	Article-Nr.	Description
1	11007194	IMPUGN.TUBO VAP.G0053 NER.			
2	11001620	CANOTTO INT.PANNAREL.P0049 NER.			
3	11011504	COP.PANNAREL.P0049 OT/CROM.TF			
4	12000450	VITE TCBR 3,5X12 PLAST.ZN-N			
5	128210600	RONDELLA ELASTICA X ALBERI D=6 MM			
6	11012381	RUB.REGOL.FLUSSO ACQ/VAP.V2 P0057			
7	12000893	OR METRICO 0120-20 IN EPDM NER.			
8	11008104	VALV.A FUNGO REGOL.FLUSSO P0057 NER.			
9	11008105	SUPP.VALV.A FUNGO REGOL.FLUSSO P0057			
10	11008077	MOLLA VALV.REGOL.FLUSSO P0057 ACC.			
11	11008106	TAPPO VALV.A FUNGO REGOL.FLUSSO P0057			
12	12000892	FASCETTA OETIKER D=9,5 16700004			
13	11005757	SUPP.TUBO VAP.P0057 NEU.			
14	11013637	AS.TUBO VAP+DADO XSM OT/CROM.TF			
15	140324461	OR ORM 0060-20 IN TERMOIL			
16	11011127	BOCC.TUBO VAP.P0057 PA6 NER.			
17	16000380	TUBO SIL.RETIN.5X8,9 MATASSA			
18	11012923	PROTEZ.TUBO VAP.XSM CROM.			
19	129932502	VITE TSP 5X30 PLAST.ZN-B			
20	11011341	AS.CALD.TUB.V4 1300W 230V			
20	11011342	AS.CALD.TUB.V4 1300W 120V			
21	129573202	VITE TCB M4X8 AUTOFORM.C/TEST.DENT.ZN-B			
22	190800100	SENSORE TEMPERATURA NTC UL L=280MM			
23	11003752	SUPP.CALD.P0057 NER.			
24	12001034	TERMOSTATO ONE SHOT 175°			
25	11010164	MOLLA X TERMOST.LAT.CALD.TUB.V6 ACC.			
26	11004689	AS.VALV.SIC.16-18 BAR OT/TEA			
27	JS01.022	TUBO SILICONE 5X10 60SH IN MATASSA			
28	149205850	SUPP.POMPA TYP ULKA C/SMUSSO NER.			
29	11009747	AS.CONN.2P.POMPA P0057 UL			
30	12000140	POMPA ULKA EP5/S GW 230V-50HZ			
30	12000142	POMPA ULKA EAP5/S 120V-60HZ			
30	12000182	POMPA ULKA EP5/S GW 220V-60HZ			
31	11021450	ISOLANTE CALD.TUB.STD C1			
32	11005948	AS.CONN.3P.TURBINA P0057			
33	NV99.099	AS.TURBINA D=1,2 932-8521/00			
34	11013894	FORCEL.FERMA TUBO VAP.GXSM NER.			
100	11009776	AS.CALD.TUB.STD C1 1300W 230V			
100	11009778	AS.CALD.TUB.STD C1 1300W 120V			



Pos	Article-Nr.	Description	Pos	Article-Nr.	Description
1	11010031	VITE INCREMENTO CORTA MC ZAMA/TEA			
1	11024208	VITE INCREMENTO CORTA MC ZAMA TORN.TEA			
2	129574802	VITE TCB M4X30 ZN-B			
3	149198250	SUPP.SUP.MACINA MC V3 NER.			
4	140328960	OR METRICO 0530-15 IN NBR FDA			
5	146520100	MACINA 48X28 IN CERAMICA			
6	11012466	BOCC.PROTEZ.DITO CONT.CAF.GRA.P0057 OT.			
7	149198350	SUPP.INF.MACINA MC V3 NER.			
8	123030300	CUSCINETTO ASSIALE EKKO 342.35252			
9	140360500	ANELLO DE=45,4 DI=39,4H=4 IN FELTRO			
10	128310402	ROSETTA UNI 8842 A4 ZINC.			
11	11026355	AS.CONVOGL.USCITA CAF.MAC.V4 SMART1 NER.			
12	145854462	GUARN.INF.CONT.CAF.MAC.SMART1 NER.			
13	226000300	AS.INGR.SX Z=38 MOVIM.MACINA C/CALAMITA			
14	11000511	AS.MOTORE MC V3.1 MOD=1,25 SX 120V			
14	11000513	AS.MOTORE MC V3.1 MOD=1,25 SX 230V			
15	149214800	TAPPO CENTRAG.VITE S/FINE MOD=1,25 MC V3			
16	129661702	VITE TCB 3,5X30 PLAST.ZN-B			
17	11002873	BOCC.ISOLANTE MOTORE MC P124 NER.			
18	11000597	MOLLA SUPP.MOTORE MC P124 ACC.			
19	11014285	PROT.DITO CONT.CAF.GRA.V2 P0057 NER.			
20	128381902	RONDEL.PIANA DI=4,3 DE=14 SP=1,5 ACC.			
21	149199050	SUPP.SENS.TERMICO MOTORE MC NER.			
22	11000194	SUPP.MOTORE MC P124 NER.			
23	181540900	SCHEDA C/SENS.HAL 506 SF-K C/CONN.			
24	123030200	CUSCINETTO RADIALE 61900.2RS1			
25	128381800	RONDEL.BILANCIAMENTO 21,8X14X0,25 ACC.			
26	142905450	CORPO SUP.C/USCITA CAF.MAC.MC NER.			
27	11008871	AS.CONN.3P.SENSORE/MC S0053 UL			
28	11002613	SUPP.INF.INGR.REG.MAC.P124 NER.			
29	11002572	MOLLA REGOL.MC P124 ACC.			
30	11003784	INGR.Z=14-24 REG.MAC.CAF.P0049 NER.			
31	U043.004	VITE TCB M4X16 ZN-B			
32	11002508	SUPP.SUP.INGR.REG.MAC.P124 NER.			
33	129914002	VITE TCB 3,5X16 PLAST.ZN-B			
34	11008869	AS.CONN.2P.MOTORE MC S0053			
100	11013028	AS.GEN.MOTORE MC P0057 120V			
100	11024242	AS.GEN.MOTORE MC V3 P0057 120V			
100	11006059	AS.GEN.MOTORE MC STD P0057 230V			



Pos	Article-Nr.	Description
1	17000366	AS.PIAST.MONTAG.MOTORID.XSMC NER.
2	NE05.038	MICROINTERRUTTORE
3	20000900	KIT RIC.INGRANAGGI MOTORID.V2
4	9161.132	RONDELLA MOTORE MOTORID.MYLAR
5	11003037	AS.MOTORE MOTORID.C/COND.
6	9121.046	BOCC.SINTERIZ.MOTORE MOTORID.BRONZO
7	148380200	RONDELLA D=5,5 IN TELA BAKELIZZATA
8	9121.044	ANTIVIBRANTE X MOTORE
9	11003754	COP.PIAST.MONTAG.MOTORID.P0057 NER.
10	12000450	VITE TCBR 3,5X12 PLAST.ZN-N
11	11013531	AS.PERNO RUB.REGOL.FLUS.ACQ/VAP.V2 P0057
12	11013530	PERNO RUB.REGOL.FLUSSO ACQ/VAP.V2 P0057
13	NM01.035	OR ORM 0090-20 SILICONE
14	NM01.057	OR ORM 0050-20 SILICONE
15	NE05.013	MICROINTERRUTTORE SAIA XGK52-81-J23
16	11013205	GUARNIZ.PIAST.MOTORE MOTORID.XSM NER.
17	11012382	GRUP.CAF.8GR.5BAR P0057 NER.

Pos	Article-Nr.	Description
-----	-------------	-------------