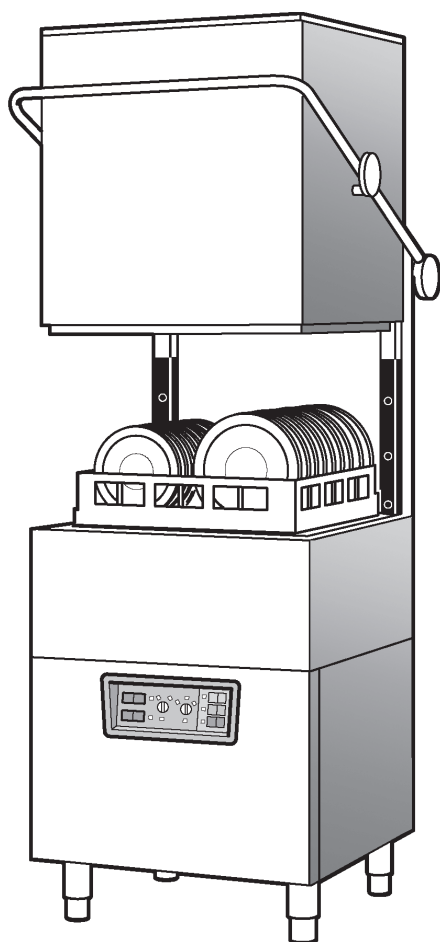


## ELENCO PEZZI DI RICAMBIO

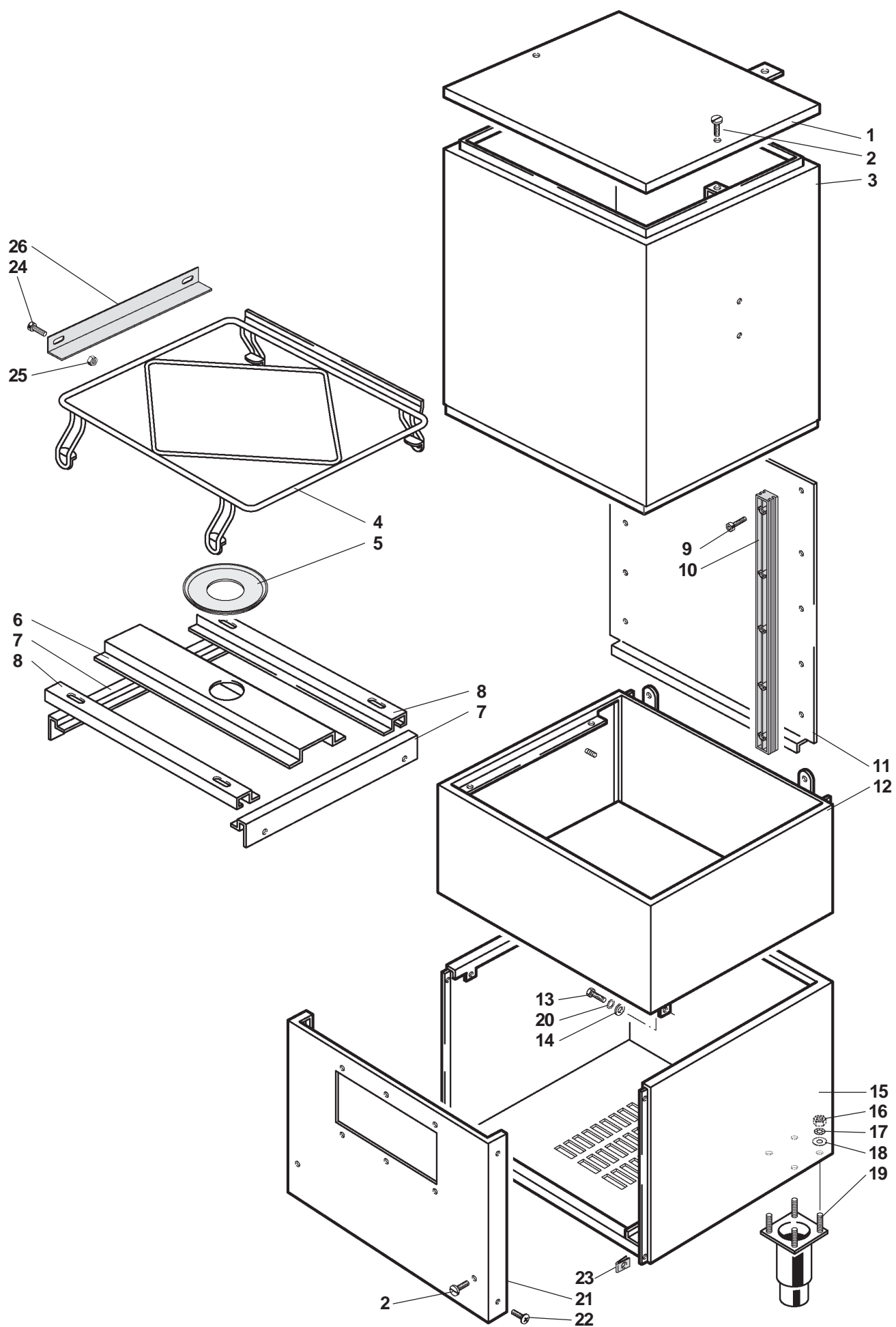
## SPARE PARTS LIST

## LISTE DES PIÈCES DÉTACHÉES

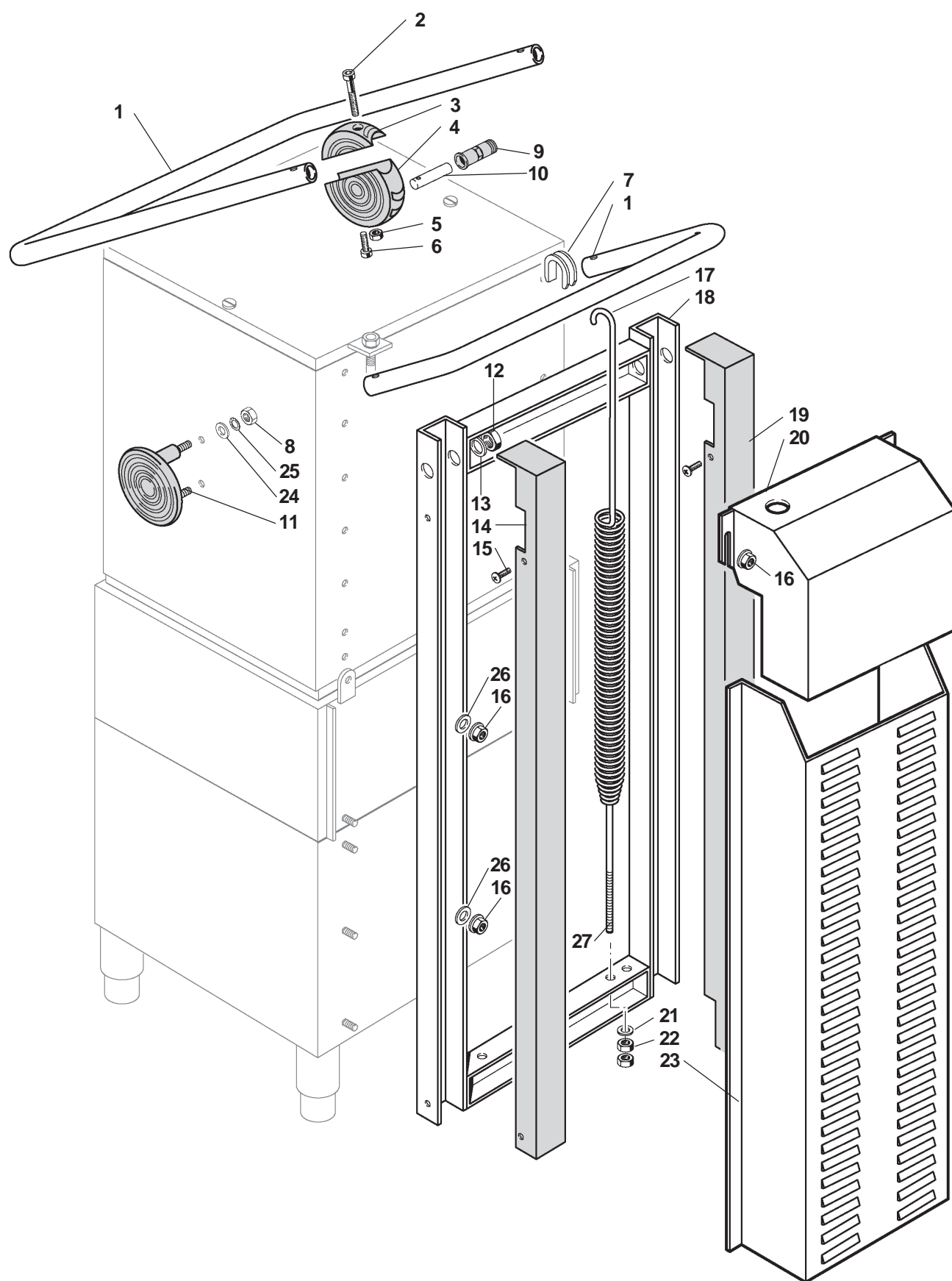


*mod.*  
**SEI 2P**

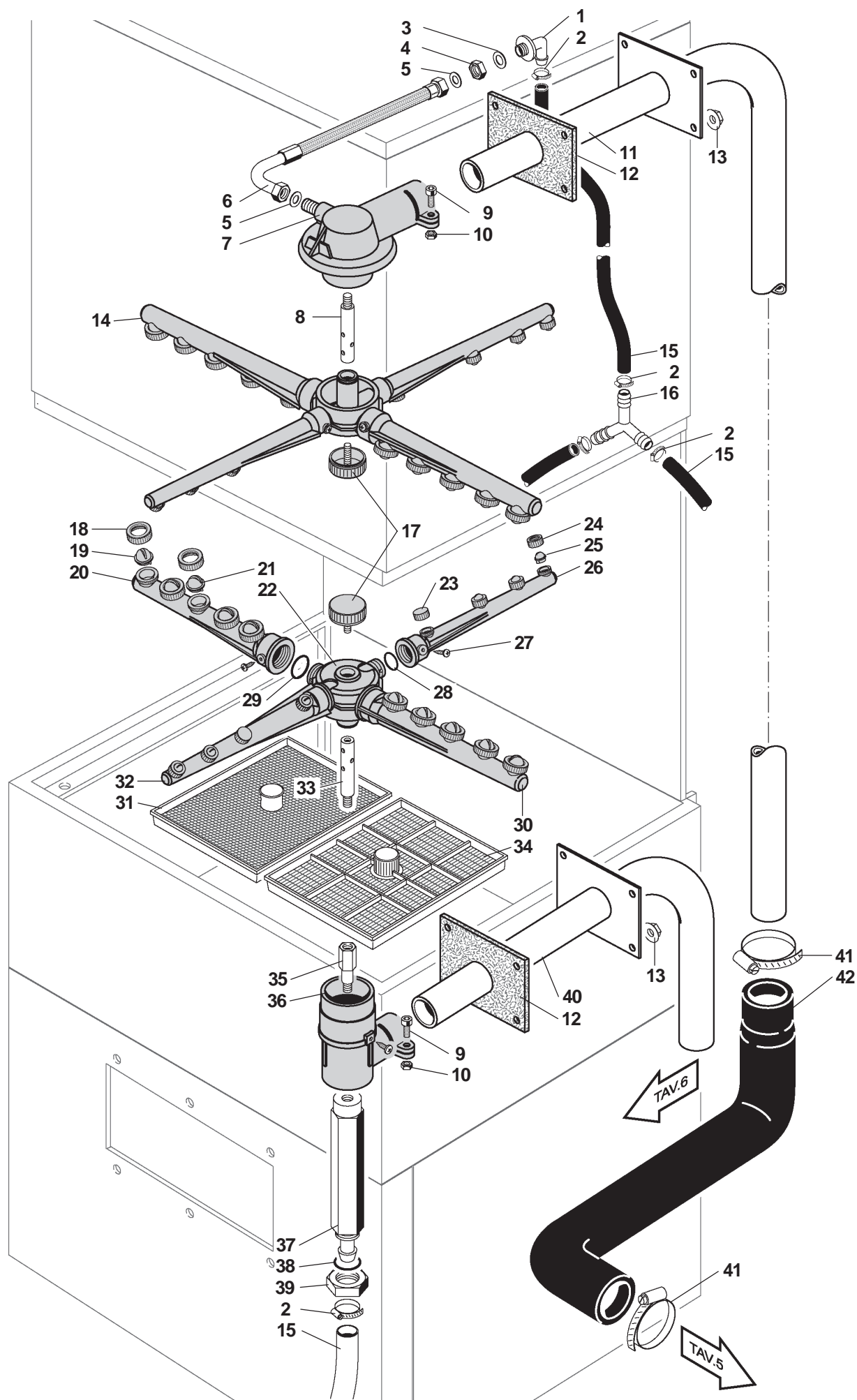
| POS. | COD.      | DESCRIZIONE                    | DESCRIPTION            | DESIGNATION               |
|------|-----------|--------------------------------|------------------------|---------------------------|
| 1    | GMCCP6S   | pannello superiore             | upper cover            | panneau superieur         |
| 2    | VVTPB510I | vite fissaggio pannello M 5x10 | screw M 5x10           | vis M 5x10                |
| 3    | GMCP6     | capottina                      | hood                   | capot                     |
| 4    | GMGC6401  | telaio supporto cestello       | basket ramp            | support panier            |
| 5    | LI034P    | ghiera inferiore               | barflle plate          | deflecteur                |
| 6    | LISFC6    | trave centrale                 | central beam           | support centrale          |
| 7    | LISFL6    | supporto filtro laterale       | side filter support    | support filtre lateral    |
| 8    | LISFA6    | supporto filtro ant./post.     | cleaner support        | support filtre ant./post. |
| 9    | VVEI645I  | vite fissaggio guide M6x45     | screws for ways M6x45  | vis fixation rampe M6x45  |
| 10   | GMGCP6    | guida scorrimento capottina    | guide for hood sliding | guide capot               |
| 11   | GMPS6     | posteriore capottina           | rear panel             | dosseret capot            |
| 12   | GMVA6     | vasca                          | tank                   | cuve                      |
| 13   | VVTE512I  | vite fissaggio vasca M 5x12    | screw M 5x12           | vis M5x12                 |
| 14   | VRGR5I    | rondella D.5                   | washer D.5             | rondelle D.5              |
| 15   | G MBA6    | basamento                      | basement               | socle                     |
| 16   | VD10I     | dado fissaggio piedino M 10    | nut M 10               | écrou M 10                |
| 17   | VRP10I    | rondella piana D. 10           | washer D. 10           | rondelle D. 10            |
| 18   | VR10I     | rondella dentellata D. 10      | tab washer D. 10       | rondelle a denture D. 10  |
| 19   | AM0165AB  | piedino telescopico            | adjustable leg         | pied                      |
| 20   | VR5I      | rondella dentellata D. 5       | tab washer D. 5        | rondelle a denture D. 5   |
| 21   | GMCR6     | cruscotto basamento            | bottom panel           | panneau socle             |
| 22   | VVA3916I  | vite autofilettante D. 3,9x16  | screw D. 3,9x16        | vis D. 3,9x16             |
| 23   | AM018     | molletta corta                 | locking spring         | écrou vis a tole          |
| 24   | VVEI520I  | vite fissaggio guida M 5x20    | screw M 5x20           | vis 5x20                  |
| 25   | VDAB5I    | dado autobloccante M5          | nut M5                 | écrou M5                  |
| 26   | GMGC6461  | guida laterale cestello        | side basket way        | guide lateral panier      |



| POS. | COD.      | DESCRIZIONE                     | DESCRIPTION           | DESIGNATION            |
|------|-----------|---------------------------------|-----------------------|------------------------|
| 1    | GMMN6151  | maniglione inox                 | handle                | poignee inox           |
| 2    | VVEI655I  | vite fissaggio maniglione M6x55 | screw M6x55           | vis M6x55              |
| 3    | GMMN6161S | attacco maniglione sup.         | handle upper connect. | attache pour poignee   |
| 4    | GMMN6171S | attacco maniglione inf.         | handle lower connect. | attache pour poignee   |
| 5    | VD6I      | attacco maniglione inf.         | handle lower connect. | attache pour poignee   |
| 6    | VVEI410I  | vite fissaggio perno M4x10      | screw M4x10           | vis M4x10              |
| 7    | GMML6251  | aggancio molla                  | coupler for spring    | support pour ressort   |
| 8    | VD8I      | dado esagonale M8               | nut M8                | écrou M8               |
| 9    | GMMN6191  | bussola perno maniglione        | bush for pin          | douille pour axes      |
| 10   | GMMN6181  | perno attacco maniglione        | pin for connection    | axes attaque poignee   |
| 11   | GMMN6301S | supporto laterale               | handle side block     | support poignee        |
| 12   | D038A     | dado esagonale G 3/8"           | nut G 3/8"            | écrou G 3/8"           |
| 13   | VRP18I    | rondella per bussola D.18       | washer D. 18          | rondelle D. 18         |
| 14   | GMCTS6    | copertuta telaio sinistro       | left frame cover      | couverture chassis     |
| 15   | VVTPB515I | vite M 5x10                     | screw M 5x10          | vis M 5x10             |
| 16   | VD6FLI    | dado esagonale M6               | nut M6                | écrou M6               |
| 17   | GMML6261  | mollone inox                    | spring inox           | ressort inox de rappel |
| 18   | GMTP6     | telaio posteriore               | rear frame            | chassis posterieure    |
| 19   | GMCTD6    | copertura telaio destro         | right frame cover     | couverture chassis     |
| 20   | GMCTC6S   | copertura telaio centrale sup.  | middle frame cover    | couverture chassis     |
| 21   | VRP10I    | rondella per tirante D. 10      | washer D.10           | rondelle D.10          |
| 22   | VD10I     | dado esagonale M 10             | nut M 10              | écrou M 10             |
| 23   | GMCTC6I   | copertura telaio centrale inf.  | middle frame cover    | couverture chassis     |
| 24   | VRP8I     | rondella D. 8                   | washer D.8            | rondelle D.8           |
| 25   | VR8I      | rondella dentellata D.8         | tab washer D.8        | rondelle a denture D.8 |
| 26   | VRGBL6I   | rondella D.6 x 24               | washer D.6 x 24       | rondelle D.6 x 24      |
| 27   | GMML6271  | tirante mollone                 | stay bolt             | tirant pour ressort    |

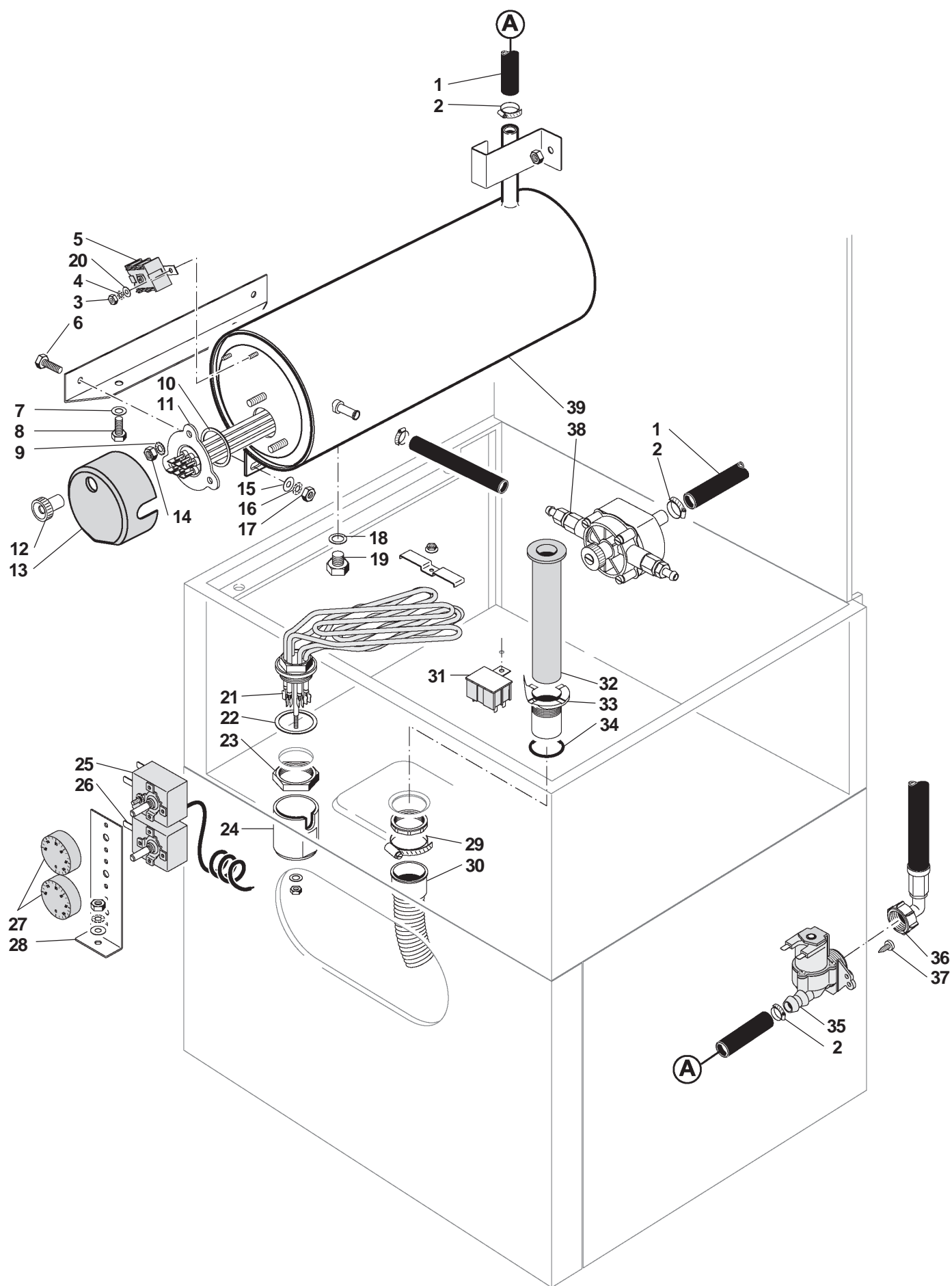


| POS. | COD.       | DESCRIZIONE                   | DESCRIPTION                         | DESIGNATION                     |
|------|------------|-------------------------------|-------------------------------------|---------------------------------|
| 1    | GR6193     | gomito asta risciacquo sup.   | <i>elbowed pipe for upper rinse</i> | raccord rinçage supérieur       |
| 2    | FA1220     | fascette fissaggio tubi 12x20 | <i>clamps for pipes 12x20</i>       | collier serrage tuyaux 12x20    |
| 3    | G15253G    | guarnizione raccordo 15x25x3  | <i>seal for connector 15x25x3</i>   | joint pour raccord 15x25x3      |
| 4    | DO38A      | dado esagonale G 3/8"         | <i>nut G 3/8"</i>                   | écrou G 3/8"                    |
| 5    | G15101G    | guarnizione tubo risciacquo   | <i>rinse pipe seal</i>              | joint pour tuyau rinçage        |
| 6    | GR6223FLEX | tubo risciacquo superiore     | <i>upper rinse pipe</i>             | tuyau rinçage supérieur         |
| 7    | LS6012B    | supporto superiore            | <i>top boss</i>                     | support supérieur               |
| 8    | LI18F      | perno inox superiore          | <i>upper spindle</i>                | pivot inox supérieur            |
| 9    | VVE1516I   | vite fissaggio M5x16          | <i>screw for upper boss M5x16</i>   | vis serrage M5x16               |
| 10   | VD5I       | dado fissaggio M 5            | <i>nut M 5</i>                      | écrou de serrage M 5            |
| 11   | LS6372     | tubo inox esterno superiore   | <i>external pipe</i>                | tuyau inox extérieur sup.       |
| 12   | LS026      | guarnizione sughero           | <i>cork seal</i>                    | joint en liege                  |
| 13   | VD6FLI     | dado fissaggio M 6            | <i>nut M 6</i>                      | écrou de serrage M 6            |
| 14   | LSISA6B    | girante completa              | <i>complete arm assembly</i>        | couronne complete               |
| 15   | TG1117     | tubo gomma                    | <i>rubber pipe</i>                  | tuyau caoutchouc                |
| 16   | GR6183     | raccordo a tre vie            | <i>3-ways connector</i>             | raccord à "T"                   |
| 17   | LS09PB     | nottolino fissaggio girante   | <i>spindle nut</i>                  | écrou pour pivot                |
| 18   | LSI017B    | ghiera fissaggio getto        | <i>locking nut for washing jet</i>  | écrou serrage gicleur           |
| 19   | LSISA16B   | getto lavaggio largo sinistro | <i>left wide washing jet</i>        | gicleur lavage large gauche     |
| 20   | LSISA6BSB  | asta lavaggio SX con getti    | <i>left washing arm with jets</i>   | rampe lavage SX avec gicleur    |
| 21   | LSISA15B   | getto lavaggio largo destro   | <i>right wide washing jet</i>       | gicleur lavage large droite     |
| 22   | LSI0607AB  | mozzo girante con boccole     | <i>centre boss with bush</i>        | moyeu tournante avec douilles   |
| 23   | LSI022B    | tappo getto risciacquo        | <i>cap for rinse jet</i>            | bouchon gicleur rinçage         |
| 24   | LSI021B    | ghiera getto di risciacquo    | <i>locking nut for rinse jet</i>    | écrou gicleur rinçage           |
| 25   | LSI020B    | getto risciacquo              | <i>rinse jet</i>                    | gicleur rinçage                 |
| 26   | LSI46CDB   | asta risciacquo DX con getti  | <i>right rinse arm with jets</i>    | rampe rinçage DX avec gicleur   |
| 27   | VVA2916I   | vite autofilettante D. 2,9x16 | <i>screw D. 2,9X16</i>              | vis serrage D. 2,9X16           |
| 28   | OR122      | OR 122 per asta risciacquo    | <i>O-ring 122 for rinse arm</i>     | joint OR 122 pour rampe rinçage |
| 29   | OR124      | OR 124 per asta lavaggio      | <i>O-ring 124 for washing arm</i>   | joint OR 124 pour rampe lavage  |
| 30   | LSI66BB    | asta lavaggio plastica        | <i>plastic washing arm</i>          | rampe lavage plastique          |
| 30   | LSISA6BDB  | asta lavaggio DX con getti    | <i>right washing arm with jets</i>  | rampe lavage DX avec gicleur    |
| 31   | LIF4V4     | prefiltro vasca inox          | <i>tank filter inox</i>             | prefiltre cuve inox             |
| 32   | LSI46CB    | asta risciacquo plastica      | <i>plastic rinse arm</i>            | rampe rinçage plastique         |
| 32   | LSI46CSB   | asta risciacquo SX con getti  | <i>left rinse arm with jets</i>     | rampe rinçage SX avec gicleur   |
| 33   | LS08       | perno inox inferiore          | <i>lower spindle</i>                | pivot inox inférieur            |
| 34   | LIF4V4P    | prefiltro vasca plastica      | <i>tank filter plastic</i>          | prefiltre cuve plastique        |
| 35   | LI330      | prolunga perno inox           | <i>extension for spindle</i>        | extension pivot inox            |
| 36   | LI029CAB   | supporto inferiore completo   | <i>lower support assembly</i>       | support inférieur complet       |
| 37   | LI6333     | supporto risciacquo           | <i>rinse column</i>                 | support rinçage                 |
| 38   | OR122      | OR 122                        | <i>O-ring 122</i>                   | joint OR 122                    |
| 39   | D038A      | dado fissaggio 3/8"           | <i>3/8" nut</i>                     | écrou serrage 3/8"              |
| 40   | LI6382     | tubo inox esterno inferiore   | <i>external pipe-lower</i>          | tuyau inox extérieur inf.       |
| 41   | FA4060     | fascetta 40x60                | <i>clamp for sleeve 40x60</i>       | collier de serrage 40x60        |
| 42   | LI6312     | manicotto mandata lavaggio    | <i>hose pump outlet</i>             | manchon refoulement lavage      |

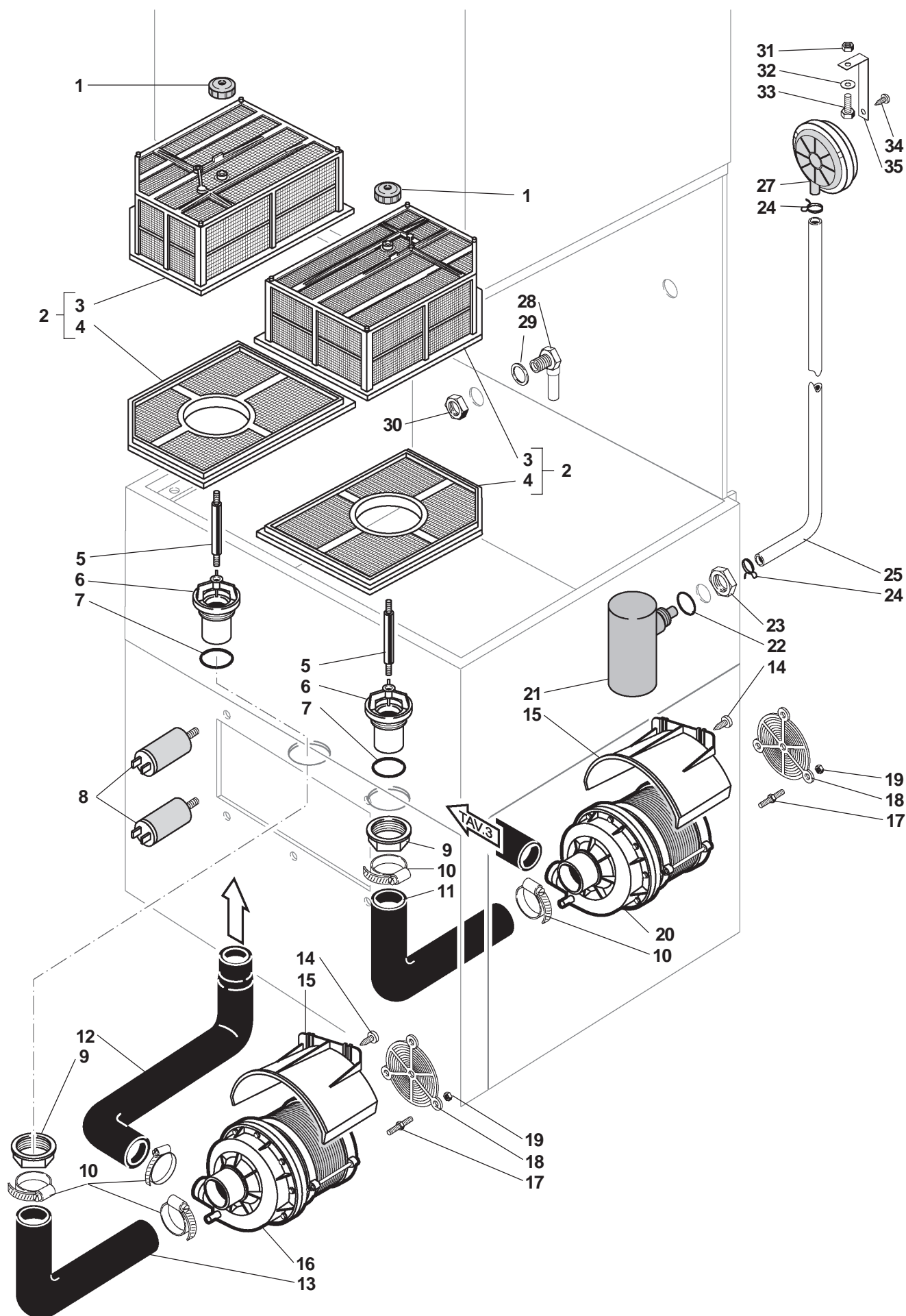


| POS. | COD.     | DESCRIZIONE                   | DESCRIPTION                             | DESIGNATION                        |
|------|----------|-------------------------------|---|------------------------------------|
| 1    | TG1117   | tubo gomma                    | <i>rubber pipe</i>                      | tuyau caoutchouc                   |
| 2    | FA1220   | fascette fissaggio tubi       | <i>clamps for pipes</i>                 | collier serrage tuyaux             |
| 3    | VD4I     | dado M 4                      | <i>nut M4</i>                           | écrou M4                           |
| 4    | VR4I     | rondella dentellata D. 4      | <i>tab washer D.4</i>                   | rondelle a denture D. 4            |
| 5    | CESB454  | termostato sicurezza          | <i>safety thermostat</i>                | thermostat securité                |
| 6    | VVTE610I | vite fissaggio M6x10          | <i>screw M6x10</i>                      | vis serrage M6x10                  |
| 7    | VRP8I    | rondella piana D.8            | <i>washer D.8</i>                       | rondelle D.8                       |
| 8    | VVTE814I | vite M8x14                    | <i>screw M8x14</i>                      | vis M8x14                          |
| 9    | VR6I     | rondella dentellata D.6       | <i>tab washer D.6</i>                   | rondelle a denture D.6             |
| 10   | ORRB3F   | OR resistenza                 | <i>O-ring for heating element</i>       | joint pour resistance              |
| 11   | CERB453F | resistenza boiler 4500 W 3PH  | <i>4500 W rinse heating element 3PH</i> | resistance surchauffeur 4500 W 3PH |
| 11   | CERB603F | resistenza boiler 6000 W 3PH  | <i>6000 W rinse heating element 3PH</i> | resistance surchauffeur 6000 W 3PH |
| 11   | CERB903F | resistenza boiler 9000 W 3PH  | <i>9000 W rinse heating element 3PH</i> | resistance surchauffeur 9000 W 3PH |
| 12   | GB093F   | vite fissaggio protezione     | <i>screw for guard</i>                  | vis serrage protection             |
| 13   | GB083F   | protezione resistenza         | <i>heating element guard</i>            | protection resistance              |
| 14   | VD6I     | dado esagonale M6             | <i>nut M6</i>                           | écrou M6                           |
| 15   | VRP6I    | rondella piana D.6            | <i>washer D.6</i>                       | rondelle D.6                       |
| 16   | VR6I     | rondella dentellata D.6       | <i>tab washer D.6</i>                   | rondelle a denture D.6             |
| 17   | VD6I     | dado esagonale M6             | <i>nut M6</i>                           | écrou M6                           |
| 18   | G1282G   | guarnizione tappo scarico     | <i>seal</i>                             | joint bouchon de vidange           |
| 19   | VVTE810I | vite M8x10                    | <i>screw M8x10</i>                      | VIS m8x10                          |
| 20   | VRGB4I   | rondella                      | <i>washer</i>                           | rondelle                           |
| 21   | CERV453F | resistenza vasca 4500 W       | <i>tank heating element 4500W</i>       | resistance de la cuve 4500W        |
| 22   | G50403GT | guarnizione resistenza vasca  | <i>seal for heating element</i>         | joint resistance lavage            |
| 23   | D0114    | dado fissaggio ottone 1 1/4 " | <i>brass nut 1 1/4"</i>                 | écrou serrage 1 1/4"               |
| 24   | CEPRV3F  | protezione resistenza         | <i>tank element protection</i>          | protection resistance              |
| 25   | CETB85   | termostato boiler 85 °C       | <i>boiler thermostat 85°C</i>           | thermostat surchauffeur 85°C       |
| 26   | CETB85   | termostato vasca              | <i>tank thermostat</i>                  | thermostat cuve                    |
| 27   | CEMTB    | manopole termostati           | <i>thermostat knob</i>                  | poignée thermostat                 |
| 28   | GMSQ6104 | supporto termostati           | <i>thermostat support</i>               | support thermostat                 |
| 29   | DP114    | ghiera per piletta scarico    | <i>nut for outlet pipe</i>              | écrou pour bonde                   |
| 30   | GS330    | tubo scarico                  | <i>drain pipe</i>                       | tuyau de vidange                   |
| 31   | CESV001  | termostato sicurezza          | <i>safety thermostat</i>                | thermostat securité                |
| 32   | GS6013B  | troppo pieno                  | <i>drain plug</i>                       | trop-plein                         |
| 33   | GS317B   | piletta scarico               | <i>outlet pipe</i>                      | bonde de vidange                   |
| 34   | OR3168   | OR per piletta scarico 3168   | <i>O-ring 3168</i>                      | joint OR 3168                      |
| 35   | CEEV124  | elettrovalvola 1 via 24V      | <i>1 way solenoid valve 24V</i>         | électrovanne 1 voie 24V            |
| 36   | TC34     | tubo entrata acqua            | <i>inlet water pipe</i>                 | tuyau entrée eau                   |
| 37   | VVA3913I | vite autofilettante 3,9x13    | <i>screw 3,9x13</i>                     | vis 3,9x13                         |
| 38   | DSAM3NT  | dosatore brillantante         | <i>rinse aid injector</i>               | doseur produit de rinçage          |
| 39   | GB413FNT | boiler                        | <i>rinse tank</i>                       | surchauffeur                       |

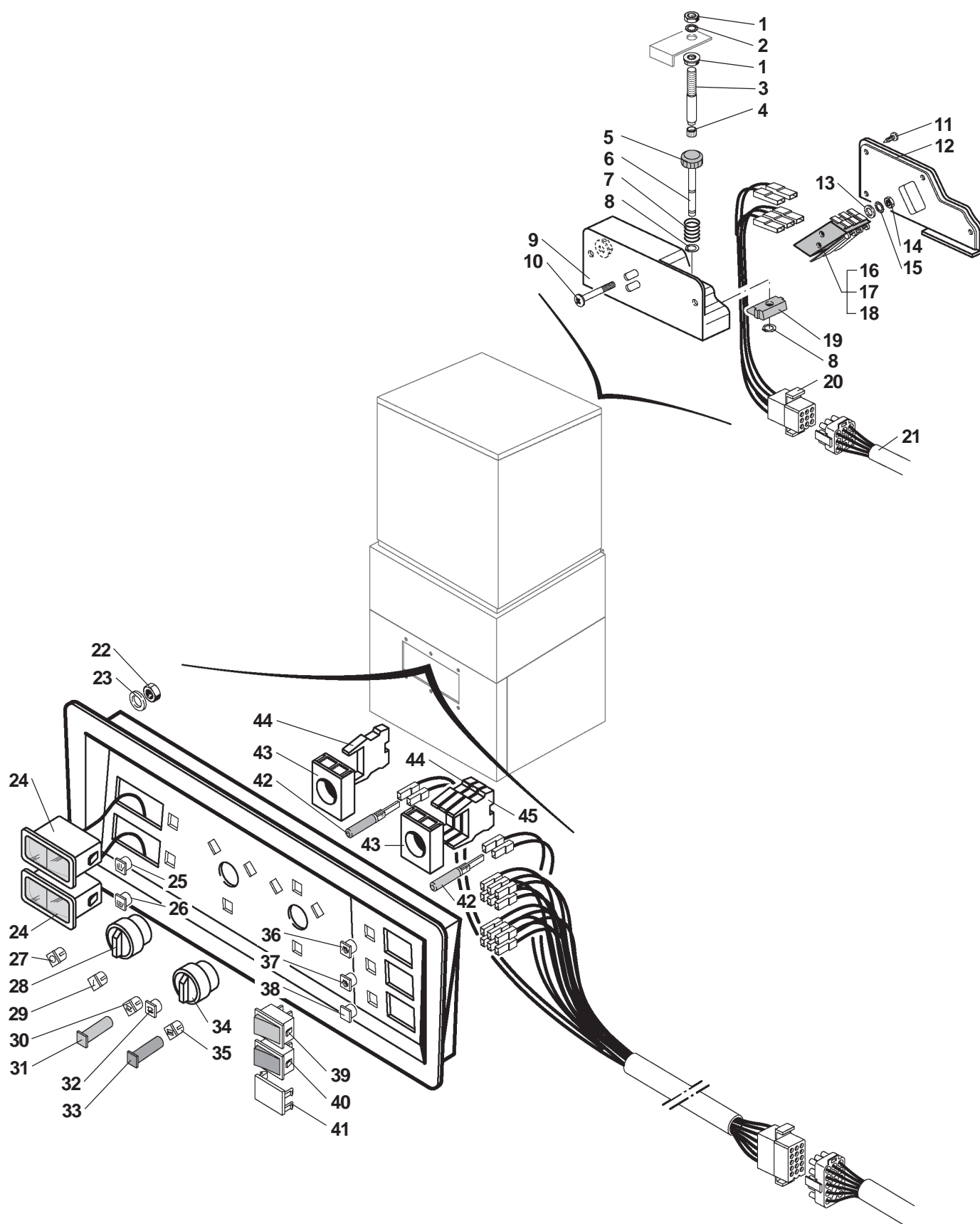




| POS. | COD.       | DESCRIZIONE                          | DESCRIPTION                       | DESIGNATION                  |
|------|------------|--------------------------------------|-----------------------------------|------------------------------|
| 1    | GA013B     | nottolino filtro                     | <i>nut filter</i>                 | écrou de filtre              |
| 2    | GA315RCA   | filtro aspirazione completo          | <i>complete plastic filter</i>    | filtre d'aspiration complete |
| 3    | GA315R     | filtro plastica rettangolare         | <i>rectangular plastic filter</i> | filtre plastique rectang.    |
| 4    | GA315RA    | piastra filtro plastica rettangolare | <i>rectangular filter plate</i>   | plaque filtre plastique      |
| 5    | GA61220T   | tirante fissaggio filtro             | <i>tie rod for filter</i>         | tige de filtre               |
| 6    | GA311B     | piletta aspirazione                  | <i>wash column</i>                | bonde d'aspiration           |
| 7    | OR3187     | OR piletta aspirazione 3187          | <i>O-ring 3187</i>                | joint OR 3187                |
| 8    | CECN12     | condensatore                         | <i>capacitor</i>                  | condensateur                 |
| 9    | DP112      | dado fissaggio piletta               | <i>nut for wash column</i>        | écrou serrage bonde          |
| 10   | FA4060     | fascetta 40x60                       | <i>clamp for sleeve 40x60</i>     | collier de serrage 40x60     |
| 11   | GA38       | manicotto aspirazione lav.           | <i>hose (pump outlet-bottom)</i>  | manchon aspiration lavage    |
| 12   | LI6312     | manicotto mandata lavaggio           | <i>hose (pump outlet)</i>         | manchon refoulement lavage   |
| 13   | GASA8      | manicotto aspirazione lavaggio       | <i>hose (pump outlet-bottom)</i>  | manchon aspiration lavage    |
| 14   | VVA4TC213I | vite autofilettante D. 4,2x13        | <i>screw D. 4,2 X 13</i>          | vis serrage D. 4,2 X 13      |
| 15   | GLPPH40PL  | protezione pompa                     | <i>pump protection</i>            | protection pompe             |
| 16   | EP100C     | pompa lavaggio superiore             | <i>upper washing pump</i>         | pompe lavage sup.            |
| 17   | LI6392     | prigioniero fissaggio pompa          | <i>pump securing stud bolt</i>    | prisonnier serrage pompe     |
| 18   | AM0GVP     | griglia ventilazione pompa           | <i>pump ventilation grate</i>     | grille protection pompe      |
| 19   | VD6FLI     | dado esagonale M6                    | <i>nut M6</i>                     | écrou M6                     |
| 20   | EP100      | pompa lavaggio inferiore             | <i>lower washing pump</i>         | pompe lavage inf.            |
| 21   | GP02562PB  | campana aria                         | <i>air vessel</i>                 | chambre de compression       |
| 22   | OR3118     | OR trappola                          | <i>O-ring</i>                     | joint                        |
| 23   | D034       | dado fissaggio 3/4"                  | <i>3/4" nut</i>                   | écrou serrage 3/4"           |
| 24   | FAM58      | fascetta per tubetto                 | <i>pipe clamp</i>                 | collier                      |
| 25   | TSIL48     | tubetto pressostato                  | <i>pressure switch pipe</i>       | tuyau pressostat             |
| 27   | CEPR62P    | pressostato                          | <i>pressure switch</i>            | pressostat                   |
| 28   | DSDET62P   | iniettore detersivo                  | <i>detergent injector</i>         | injecteur produit de lavage  |
| 29   | GDSDET62P  | guarnizione 12x24x2,5                | <i>seal 12x24x2,5</i>             | joint 12x24x2,5              |
| 30   | VD12I      | dado esagonale                       | <i>nut</i>                        | écrou serrage                |
| 31   | VD5I       | dado esagonale                       | <i>nut</i>                        | écrou serrage                |
| 32   | VR5I       | rondella                             | <i>washer</i>                     | rondelle                     |
| 33   | VVTE612I   | vite                                 | <i>screw</i>                      | vis                          |
| 34   | VVA3595I   | vite autofilettante D. 3,5x9,5       | <i>screw D. 3,5x9,5</i>           | vis serrage D. 3,5x9,5       |
| 35   | AM0SQPR6   | piastrina                            | <i>slab</i>                       | plaque                       |



| POS. | COD.      | DESCRIZIONE                | DESCRIPTION                   | DESIGNATION             |
|------|-----------|----------------------------|-------------------------------|-------------------------|
| 1    | VD6FLI    | dado esagonale M6          | <i>nut M6</i>                 | écrou M6                |
| 2    | VR6I      | rondella dentellata D.6    | <i>tab washer D.6</i>         | rondelle a denture D.6  |
| 3    | CEPAMP6S  | perno inox                 | <i>st. steel stud</i>         | st. steel stud          |
| 4    | CEMPPI    | puntale                    | <i>head cover</i>             | couvercle pour tête     |
| 5    | CETAM62PS | tasto                      | <i>push button</i>            | bouton                  |
| 6    | CEMP6S    | perno inox                 | <i>st. steel stud</i>         | st. steel stud          |
| 7    | CEMMP6S   | molla inox                 | <i>st. steel spring</i>       | ressort inox            |
| 8    | CEMP22    | seeger                     | <i>circlip</i>                | circlips                |
| 9    | CESMP62PS | scatola micro              | <i>micro box</i>              | boîte du micro          |
| 10   | VVTCC350I | vite                       | <i>screw</i>                  | vis                     |
| 11   | VVA3595I  | vite autofilettante        | <i>screw</i>                  | vis                     |
| 12   | CECSM62PS | coperchio scatola micro    | <i>micro box cover</i>        | couvercle boîte micro   |
| 13   | VRP3I     | rondella D. 3              | <i>washer D. 3</i>            | rondelle D. 3           |
| 14   | VD3I      | dado esagonale M3          | <i>nut M3</i>                 | écrou M3                |
| 15   | VR3I      | rondella dentellata D. 3   | <i>tab washer D. 3</i>        | rondelle a denture D. 3 |
| 16   | CEMP62PS3 | microinterruttore 3 uscite | <i>3 exits microswitch</i>    | micro 3 sorties         |
| 17   | CEMP62PS3 | microinterruttore 3 uscite | <i>3 exits microswitch</i>    | micro 3 sorties         |
| 18   | CEMP62PS  | microinterruttore 2 uscite | <i>2 exits microswitch</i>    | micro 2 sorties         |
| 19   | CEAZM62PS | azionatore micro           | <i>micro actuator</i>         | micro activateur        |
| 20   | CECBM6S   | cablaggio micro            | <i>micro wiring loom</i>      | cablage micro           |
| 21   | CECBPP6S  | cablaggio                  | <i>wiring</i>                 | cablage                 |
| 22   | VDA4I     | dado M 4                   | <i>nut M4</i>                 | écrou M4                |
| 23   | VRGB4I    | rondella D. 4              | <i>washer D. 4</i>            | rondelle D. 4           |
| 24   | CETEM     | termometri                 | <i>thermometers</i>           | thermometre             |
| 25   | CESB6194  | simbolo boiler             | <i>boiler symbol</i>          | symbole surchauffeur    |
| 26   | CESB6204  | simbolo vasca              | <i>tank symbol</i>            | symbole cuve            |
| 27   | CESB6184  | simbolo "0"                | <i>"0" symbol</i>             | symbole "0"             |
| 28   | CEIN623A4 | interruttore generale      | <i>main switch</i>            | bouton interrupteur     |
| 29   | CESB6264  | simbolo "1"                | <i>"1" symbol</i>             | symbole "1"             |
| 30   | CESB6304  | simbolo ciclo corto 1'     | <i>short cycle 1' symbol</i>  | symbole cycle court 1'  |
| 31   | CESP6224  | spia ON-OFF(verde)         | <i>ON-OFF warning light</i>   | voyant MARCHE-ARRET     |
| 32   | CESB6314  | simbolo ciclo lungo 3'     | <i>long cycle 3' symbol</i>   | symbole cycle longue 3' |
| 33   | CESP6274  | spia ciclo (arancione)     | <i>cycle warning light</i>    | voyant cycle            |
| 34   | CESC6284  | selettore ciclo            | <i>cycle selector</i>         | bouton de selecteur     |
| 35   | CESB6324  | simbolo ciclo medio 2'     | <i>medium cycle 2' symbol</i> | symbole cycle moyen 2'  |
| 36   | CESB6354  | simbolo lavaggio manuale   | <i>manual washing symbol</i>  | symbole lavage manuel   |
| 37   | CESB6344  | simbolo risciacquo manuale | <i>manual rinse symbol</i>    | symbole rinçage manuel  |
| 38   | CESB6334  | tappo neutro piccolo       | <i>small neutral plug</i>     | bouchon petit           |
| 39   | CEDV6364  | deviatore lavaggio         | <i>washing switch</i>         | interrupteur lavage     |
| 40   | CEPU6374  | pulsante risciacquo        | <i>rinse push button</i>      | bouton rinçage froid    |
| 41   | CESB6384  | tappo neutro grande        | <i>big neutral plug</i>       | bouchon grand           |
| 42   | CESP6394  | lampada spia               | <i>warning lamp</i>           | ampoule de voyant       |
| 43   | CEIN623B4 | blocchetto interruttore    | <i>main switch block</i>      | support interrupteur    |
| 44   | CECNO6244 | contatto N-O               | <i>N-O contact</i>            | contacteur N-O          |
| 45   | CECNC6294 | contatto N-C               | <i>N-C contact</i>            | contacteur N-C          |



| POS. | COD.       | DESCRIZIONE                   | DESCRIPTION                | DESIGNATION                      |
|------|------------|-------------------------------|----------------------------|----------------------------------|
| 1    | CEPCE6     | piastra cablaggio             | wiring plate               | plaque composants electiques     |
| 2    | CETS62P    | tirante di sicurezza          | safety brace               | tirant de sûreté                 |
| 3    | VD4I       | dado esagonale M4             | nut M4                     | écrou M4                         |
| 4    | CET3C6     | programmatore                 | programmer                 | programmateur                    |
| 5    | CEFA       | filtro antidisturbo           | suppressor                 | filtre électrique                |
| 6    | VVTCC414I  | vite M 4x14                   | screw M 4x14               | vis M 4x14                       |
| 7    | CEMOS3F    | morsettiera                   | terminal block             | bornier                          |
| 8    | CEFI6      | fissacavo                     | power cable                | fixage cable                     |
| 9    | CEEQ       | piastrina equipotenziale      | ground plate               | plaque de terre                  |
| 10   | CETRS24    | trasformatore                 | transformer                | transformateur                   |
| 11   | VR4I       | rondella dentellata           | tab washer                 | rondelle a denture               |
| 12   | CECT24P    | contattore sicurezza vasca    | tank safety contactor      | contacteur securité cuve         |
| 13   | CETF60A    | zoccolo per ritardatore       | base for timer             | socle temporisaterur             |
| 14   | CETF60     | ritardatore 2° pompa          | 2nd. Pump timer            | temporisaterur 2me. pompe        |
| 15   | CEFU52063A | fusibile                      | fuse                       | fusible                          |
| 16   | CEMFSTR    | morsetto portafusibile        | fuse clamp                 | borne porte-fusible              |
| 17   | VVTE616I   | vite fissaggio M6x16          | screw M6x16                | vis serrage M6x16                |
| 18   | CEPCE635   | cuscinetto                    | ball bearing               | roulement                        |
| 19   | CECT24G    | contattore TL3 pompa lavaggio | contactor TL3 washing pump | contacteur TL3 pompe lavage      |
| 20   | CECT24G    | contattore sicurezza boiler   | boiler safety contactor    | contacteur securité surchauffeur |
| 21   | CECT24G    | contattore resistenza boiler  | contactor boiler heating   | contacteur surchauffeur          |
| 22   | CECT24G    | contattore resistenza vasca   | contactor tank heating     | contacteur cuve                  |
| 23   | CECT24P    | contattore TL2 comandi        | contactor TL2 controls     | contacteur TL2 commande          |
| 24   | CECT24P    | contattore TL6 porta          | contactor TL6 door switch  | contacteur TL6 securité          |
| 25   | CEFIS3F    | fissacavo completo            | cable clamp assembly       | fixage cable alimentation        |
| 26   | CECE353F   | cavo alimentazione            | power cable                | cable alimentation               |
| 27   | CECT24P    | contattore generale           | contactor main             | contacteur general               |
| 28   | VRP4I      | rondella piana D.4            | flat washer D.4            | rondelle D.4                     |
| 29   | VD6I       | dado esagonale M6             | nut M6                     | écrou M6                         |
| 30   | VR6I       | rondella dentellata           | tab washer                 | rondelle a denture               |
| 31   | VRP6I      | rondella piana D.6            | flat washer D.6            | rondelle D.6                     |
| 32   | VR8Z       | rondella dentellata           | tab washer                 | rondelle a denture               |
| 33   | VD8Z       | dado esagonale M8             | nut M8                     | écrou M8                         |
| 34   | VRP6I      | rondella                      | washer                     | rondelle                         |



