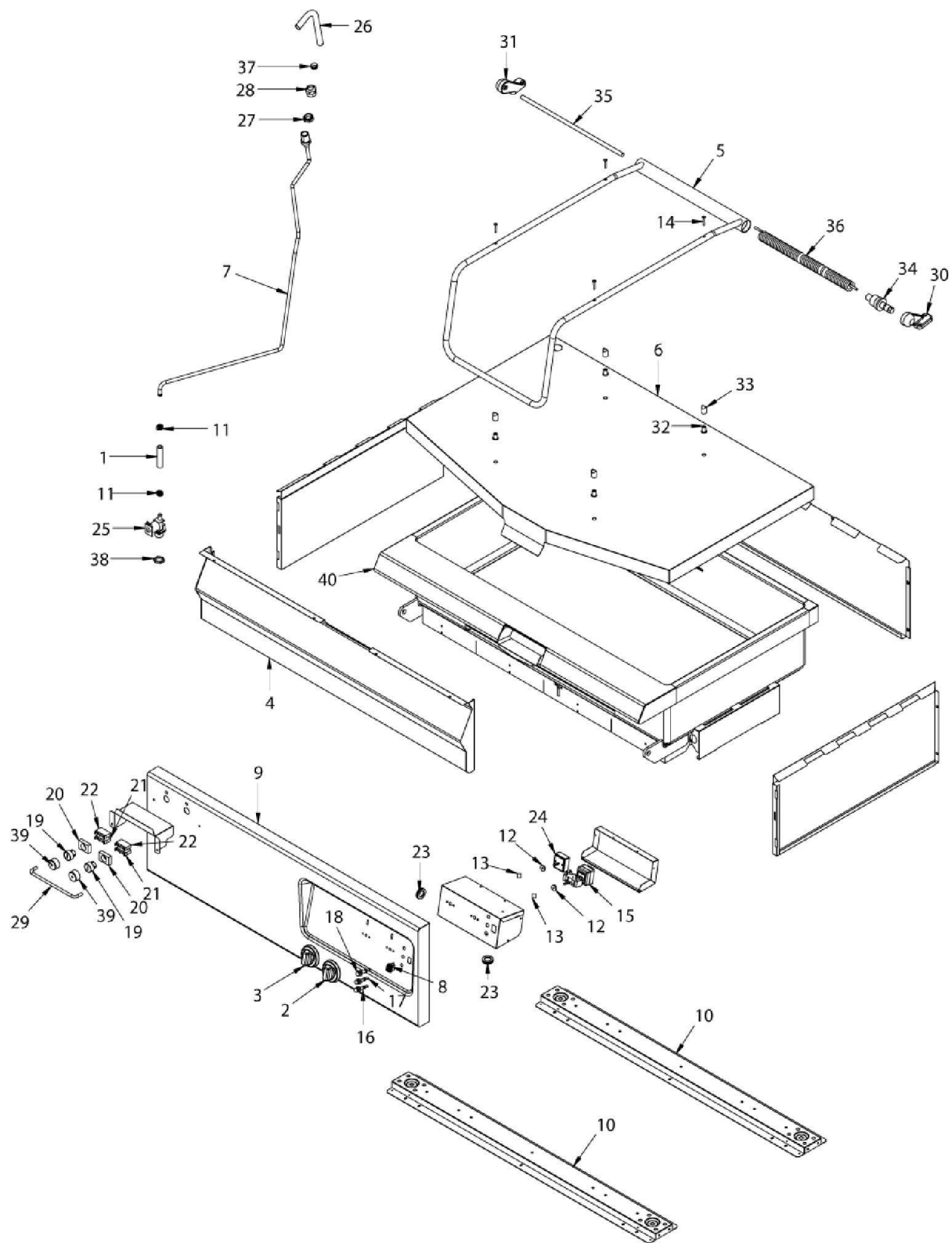
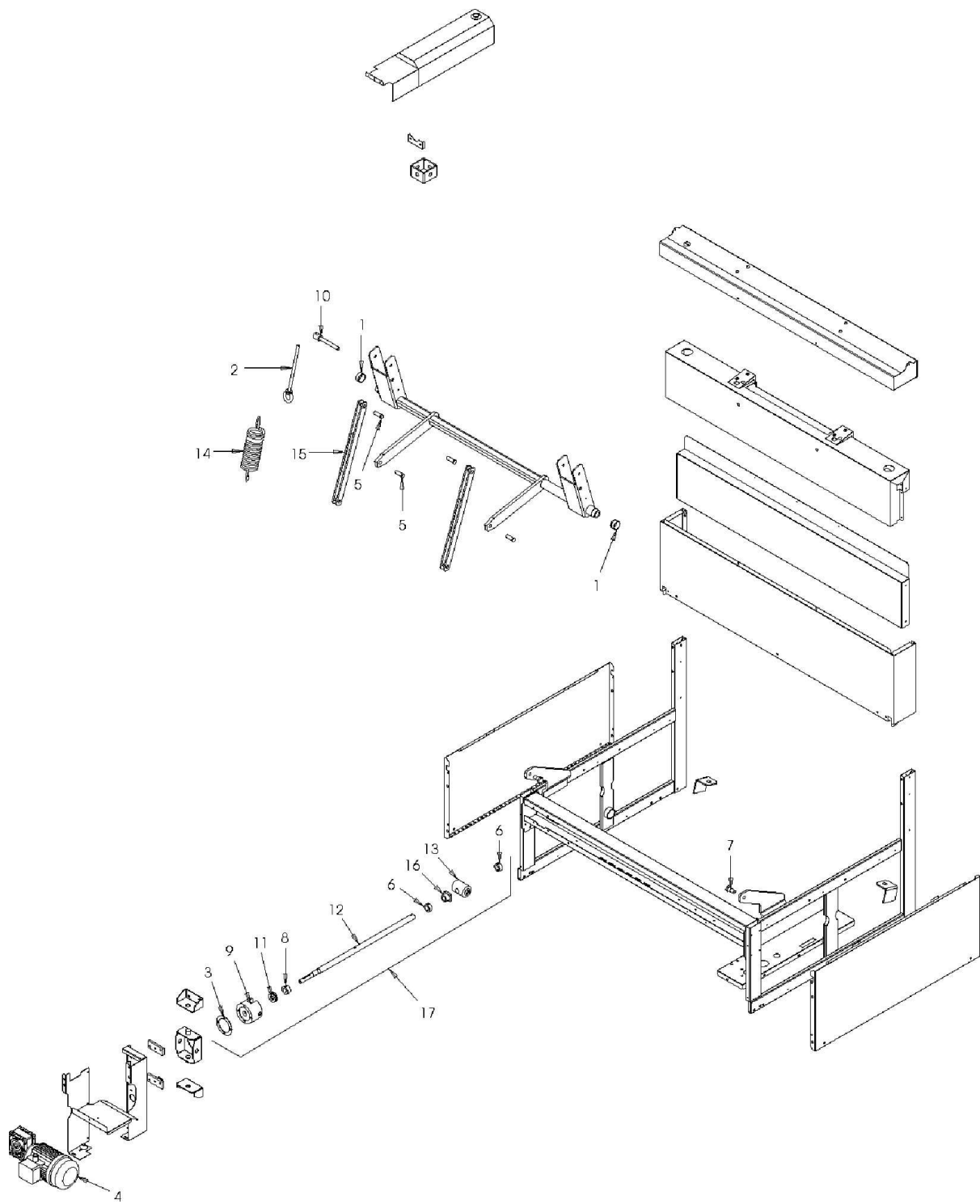


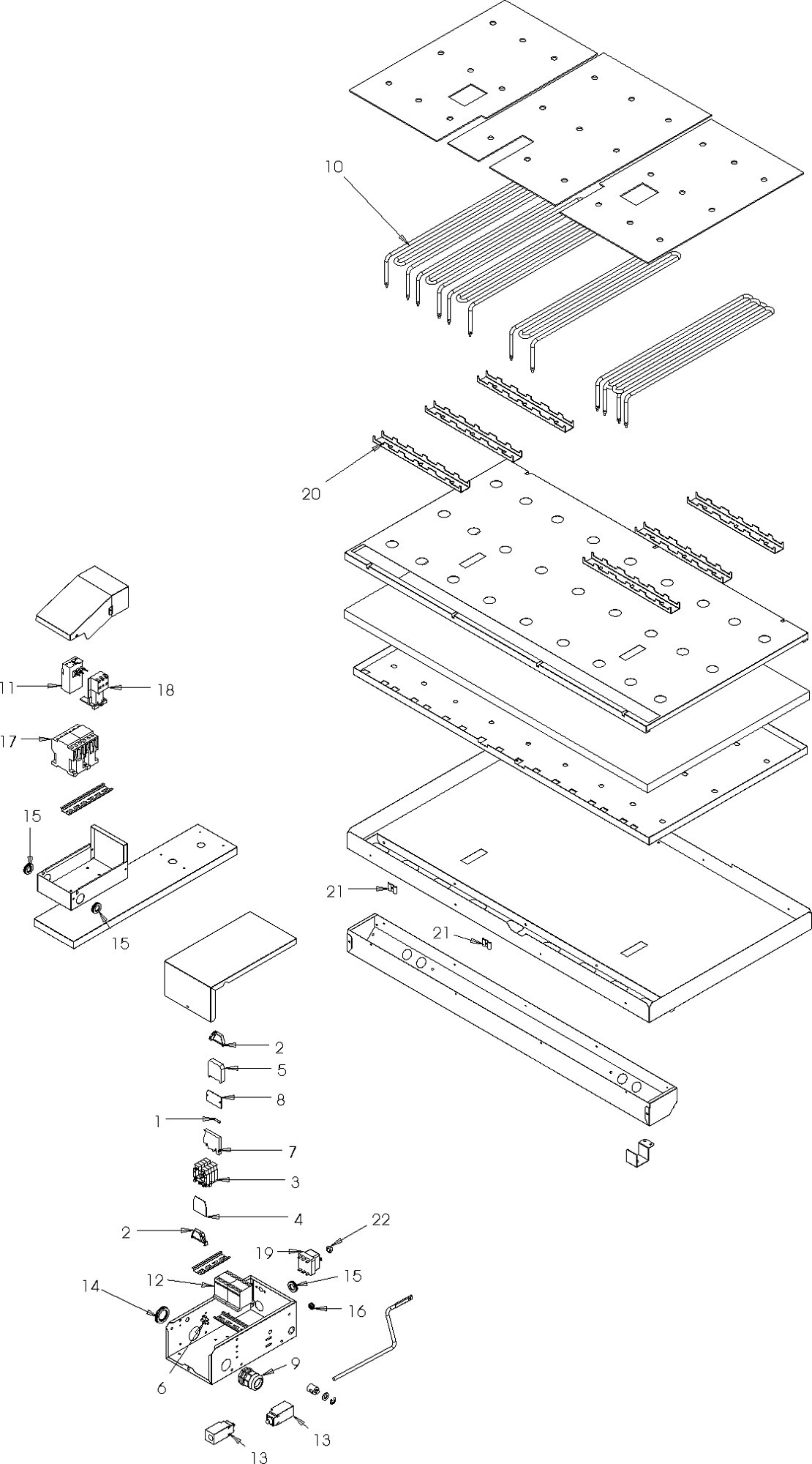


**291BR2EA**

**Edition 20130118-20130220**







Page	Pos	Code	Description	Info
002	001	131AA12	RUBBER HOSEØ17Ø10 X H²O	01/03/2006-
002	002	3015791	HANDLE	14/03/2008-
002	003	3015871	ELECTRIC CONTROL KNOB	17/03/2008-
002	004	3050381	CONTROL BOARD	01/03/2006-
002	005	3061911	HANDLE	01/03/2006-
002	006	3063402	COVER	18/01/2013-
002	007	3065570	WATER PIPE	01/03/2006-
002	008	6300674	SWITCH	28/01/2008-
002	009	3066130	FRONT PANEL MAN.	01/03/2006-
002	010	30T3192	PROFILE OMEGA	01/03/2006-
002	011	3140230	12/20 PIPE CLAMP	01/03/2006-
002	012	3152240	THERMOSTAT PROTECT.	01/03/2006-
002	013	3170290	KNOB SPRING	01/03/2006-
002	014	31D0040	SCREW	01/03/2006-20/02/2013
002	015	32V0661	THERMOSTAT	01/03/2006-
002	016	3106730	ORANGE LIGHT 230V	23/05/2007-
002	017	3106710	GREEN LIGHT 230V	23/05/2007-
002	018	3106720	RED LIGHT 230V	23/05/2007-
002	019	32W3300	BLACK SWITCH	01/03/2006-
002	020	32W3310	SUPPORT BASE	01/03/2006-
002	021	32W3320	AUXILIARY CONTACT N.O.	01/03/2006-
002	022	32W3330	AUXILIARY CONTACT N.C.	01/03/2006-
002	023	32X0120	GROMMETØ 21	01/03/2006-
002	024	32Z0171	VOLTAGE REGULATOR	01/03/2006-
002	025	33D1371	INLET WATER SOLENOID VALVE	01/03/2006-
002	026	33Q3780	WATER SPOUT	01/03/2006-
002	027	33Q3990	RING NUT	01/03/2006-
002	028	33Q4000	NUT	01/03/2006-
002	029	3600890	CONTROL PROTECTION	01/03/2006-
002	030	36C2590	RH HINGE SUPPORT	01/03/2006-
002	031	36C2600	LH HINGE SUPPORT	01/03/2006-
002	032	36E0440	PIN M5 Ø18Ø12	01/03/2006-
002	033	36E0870	SPACER	01/03/2006-
002	034	36G2680	SPRING PIN	01/03/2006-
002	035	36H0260	HINGE SHAFT	01/03/2006-
002	036	36H0330	SPRING	01/03/2006-
002	037	36Q0460	BICONE Ø 18X9	01/03/2006-
002	038	36Q1100	LOCK NUT 3/4"	01/03/2006-
002	039	37Q4030	HEAT. ELEM. PROTECTION	01/03/2006-
002	040	3055431	WELL ASS. Y	01/03/2006-
003	001	3062320	BUSHING	01/03/2006-
003	002	30T2710	FIXING M10 ASS.Y	01/03/2006-
003	003	3080940	GASKET	20/10/2006-
003	004	3080490	RATIOMOTOR CM030 U25 63B14+MS6	20/10/2006-
003	005	36C2870	PIN	01/03/2006-
003	006	36E0400	BUSHING Ø30,Ø20=12	01/03/2006-
003	007	36E0430	PIN M12 CH20X34,5	01/03/2006-
003	008	36E0770	BUSHING Ø30 Ø17=15	01/03/2006-
003	009	3080470	PLATE	20/10/2006-
003	010	36E1050	PIN	01/03/2006-
003	011	36F0340	BEARING Ø35Ø17X12	01/03/2006-

Page	Pos	Code	Description	Info
003	012	36G8100	LH SCREW Ø20X4 TP	01/03/2006-
003	013	36G8130	LEAD NUT 20TPN	01/03/2006-
003	014	36G8160	SPRING	01/03/2006-
003	015	36G8180	LIFTING ROD	01/03/2006-
003	016	36G8900	BUSHING 20TPSX	01/03/2006-
003	017	6010060	LIFTING SHAFT ASSEMBLY	01/03/2006-
004	001	3200020	FUSE 5X20	01/03/2006-
004	002	32D0870	TERMINAL CLAMP	01/03/2006-
004	003	32D0950	LIVE TERMINAL	01/03/2006-
004	004	32D0960	TERMINAL END COVER	01/03/2006-
004	005	32D0970	GROUND TERMINAL	01/03/2006-
004	006	32D1450	TERMINAL	01/03/2006-
004	007	32D1730	FUSE TERMINAL BOARD	01/03/2006-
004	008	32D1740	TERMINAL	01/03/2006-
004	009	32D1780	FAIRLEAD	01/03/2006-
004	010	32G2481	HEATING ELEMENT	01/03/2006-
004	011	3110900	RELAY	30/10/2008-
004	012	32V6550	RELAY 230V-20A- 50/60Hz	01/03/2006-
004	013	32W3251	PROTECTED MICROSWITCH	01/03/2006-
004	014	32X0130	GROMMET Ø29-Ø37	01/03/2006-
004	015	32X0140	GROMMET Ø13,5-Ø25	01/03/2006-
004	016	32X0200	GROMMET Ø7.5-Ø11.5	01/03/2006-
004	017	3110890	RELAY 230V 50/60Hz	13/04/2007-
004	018	3100950	INDEP. ASSEMBLY SUPPORT	30/10/2008-
004	019	32Z9202	SAFETY THERMOSTAT	01/03/2006-
004	020	35R4280	SLIDE	01/03/2006-
004	021	35T3540	BULB HOLDER	01/03/2006-
004	022	37Q3270	SWITCH COVER	01/03/2006-