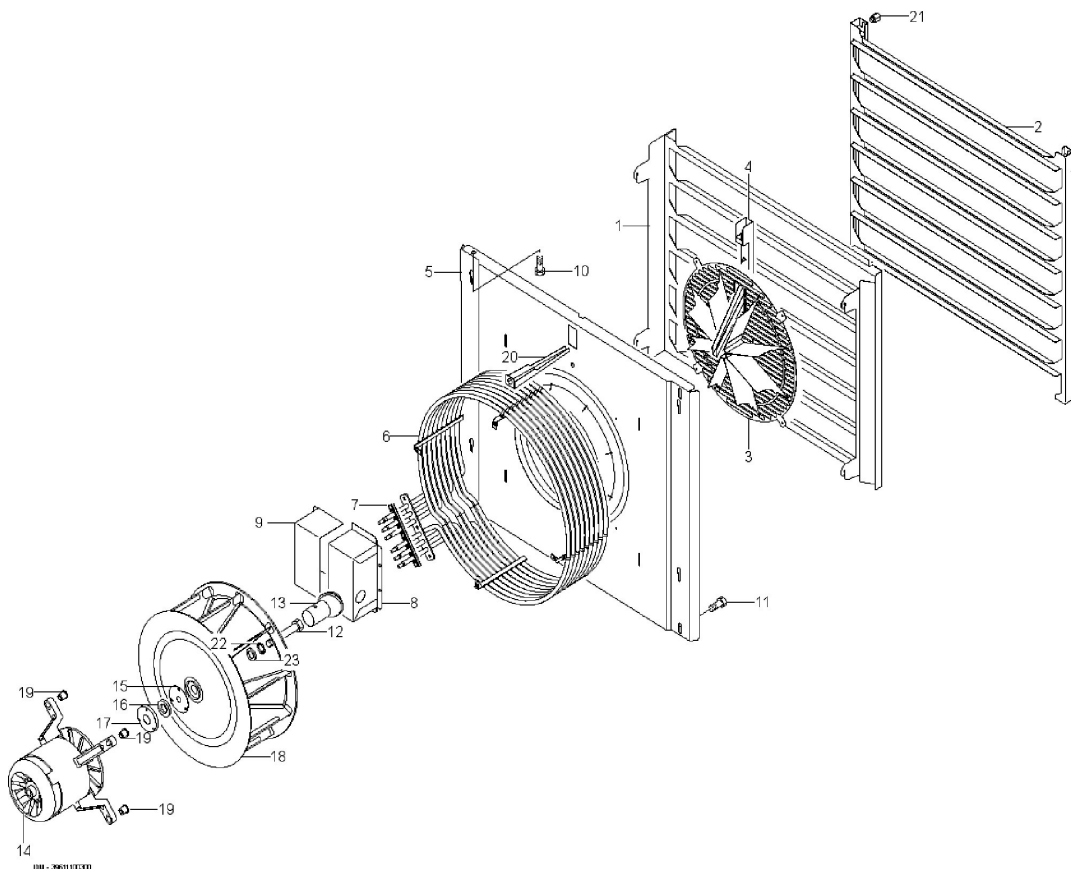




1

HOME -> OVENS -> FM/FC -> FM721E3 -> M022160 - MOTOR UNIT + FAN -> 1



Modification		Code	Opt.	Description	Rec.	Qty	Validity date
	1	35E8810		LH TRAY HOLDER		1	01/03/2004-07/11/2007
	1	3053290		LH TRAY HOLDER		1	08/11/2007-
	2	35E8820		RH TRAY HOLDER		1	01/03/2004-07/11/2007
	2	3053300		RH FRAME ASS. Y		1	08/11/2007-
	3	3003150		SCREEN GRILLE		1	01/03/2004-15/11/2007

	3	3003151	SCREEN GRILLE			1	16/11/2007-
	4	30Q3030	END PIPE, COMPLETE			1	01/03/2004-
	5	35E7240	CHAMBER AIR GUIDE			1	01/03/2004-
	6	32G1701	HEATING ELEMENT 16.4KW230V	X		1	01/03/2004-
	7	37Q3220	GASKET			1	01/03/2004-
	8	35E3770	HEAT ELEMENT BRACKET			1	01/03/2004-
	9	35E5830	HEAT ELEMENT BRACKET			1	01/03/2004-
	10	3190040	SCREW M6X20			2	01/03/2004-
	11	3190020	SCREW M6X10			2	01/03/2004-
	12	31A0040	SCREW M8X35			1	01/03/2004-
	13	3004791	DIFFUSER			1	01/03/2004-
	14	32M6722	MOTOR LEVEL 1-2		X	1	01/03/2004-
	14	32M6802	B MOTOR		X	1	01/03/2004-
	15	37Q0250	GASKET			1	01/03/2004-
	16	3004400	GASKET		X	1	01/03/2004-
	17	36E3160	RING GASKET SUPPORT			1	01/03/2004-
	18	32M6931	FAN			1	01/03/2004-
	19	36H0890	BUSHING			4	01/03/2004-
	20	35Y3260	WATER INTAKE JOINT			1	01/03/2004-
	21	36C3071	M6 TRAY HOLDER PIN			2	01/03/2004-
	22	3019000	SAFETY LOCK WASHER			1	01/03/2004-25/10/2004
	22	3019001	WASHER			1	26/10/2004-
	23	3190120	WASHER Ø30Ø8.5=2.5			1	01/03/2004-