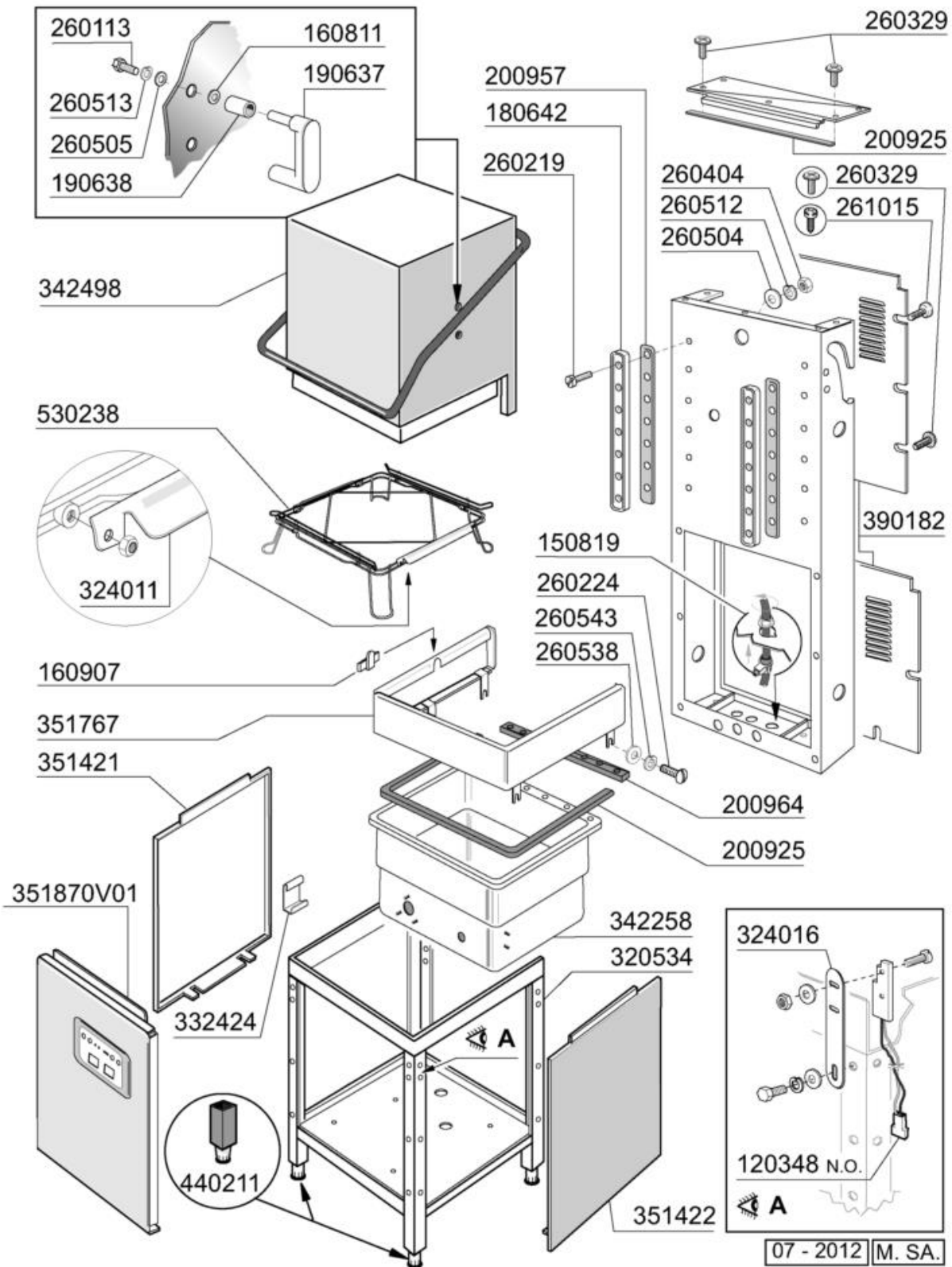
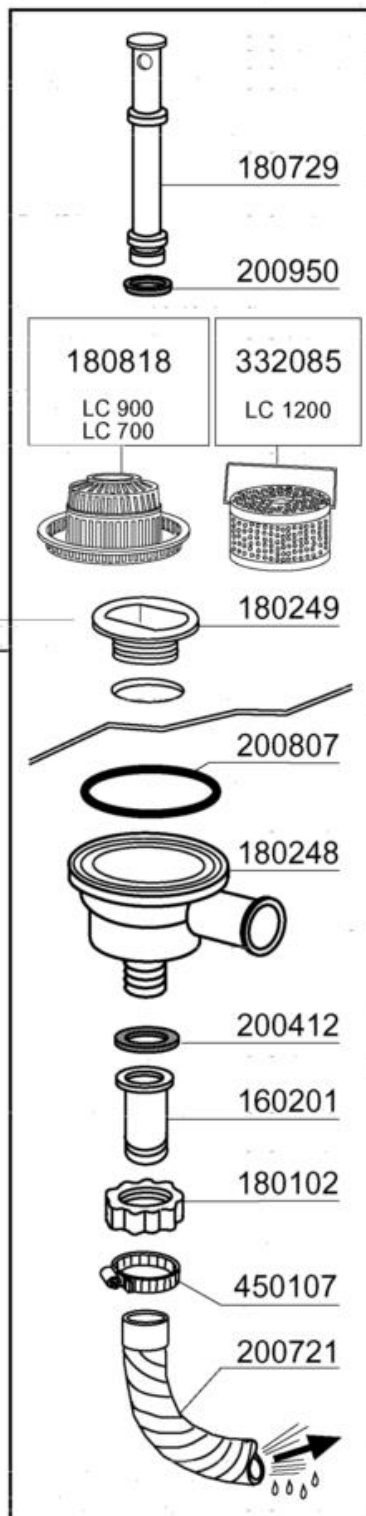
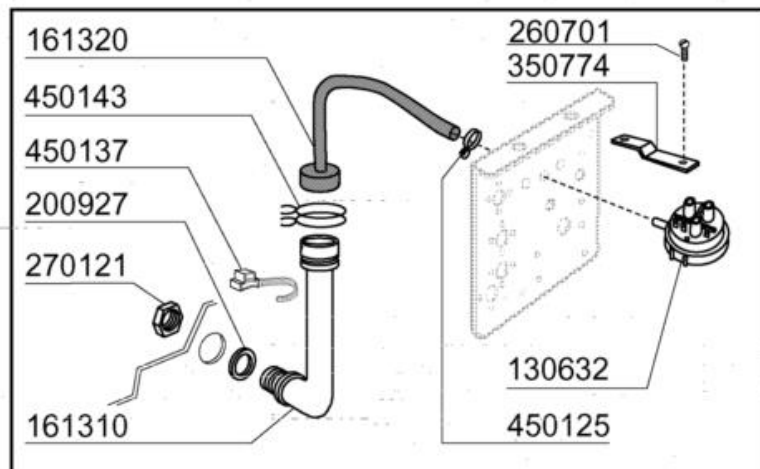
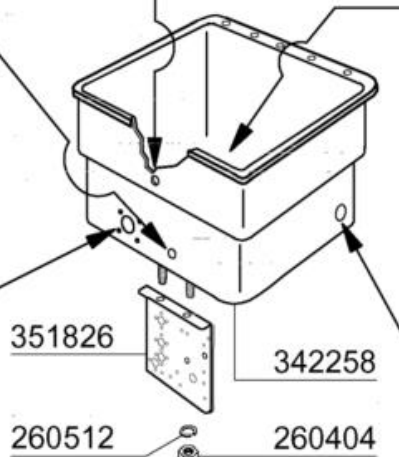
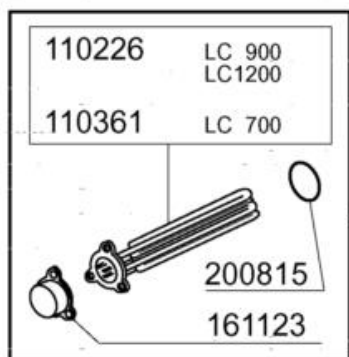
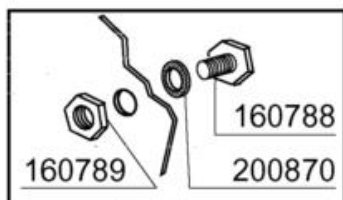
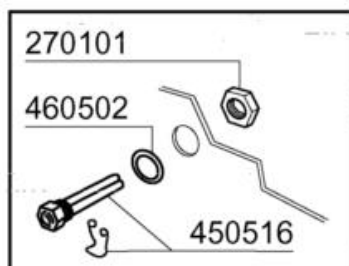
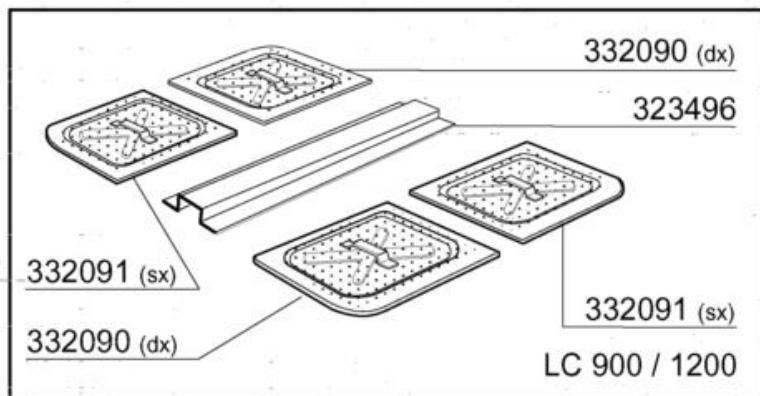


-
- 1 Hood / Tank
 - 2 Tank
 - 3 Handle
 - 4 Wash/Rinse column
 - 5 Wash arm
 - 6 Rinse assembly
 - 7 Thermostat/solenoid valve group
 - 8 Wash pump
 - 9 Wash pump
 - 10 Control box
 - 11 Rinse aid injector
 - 12 Drain pump

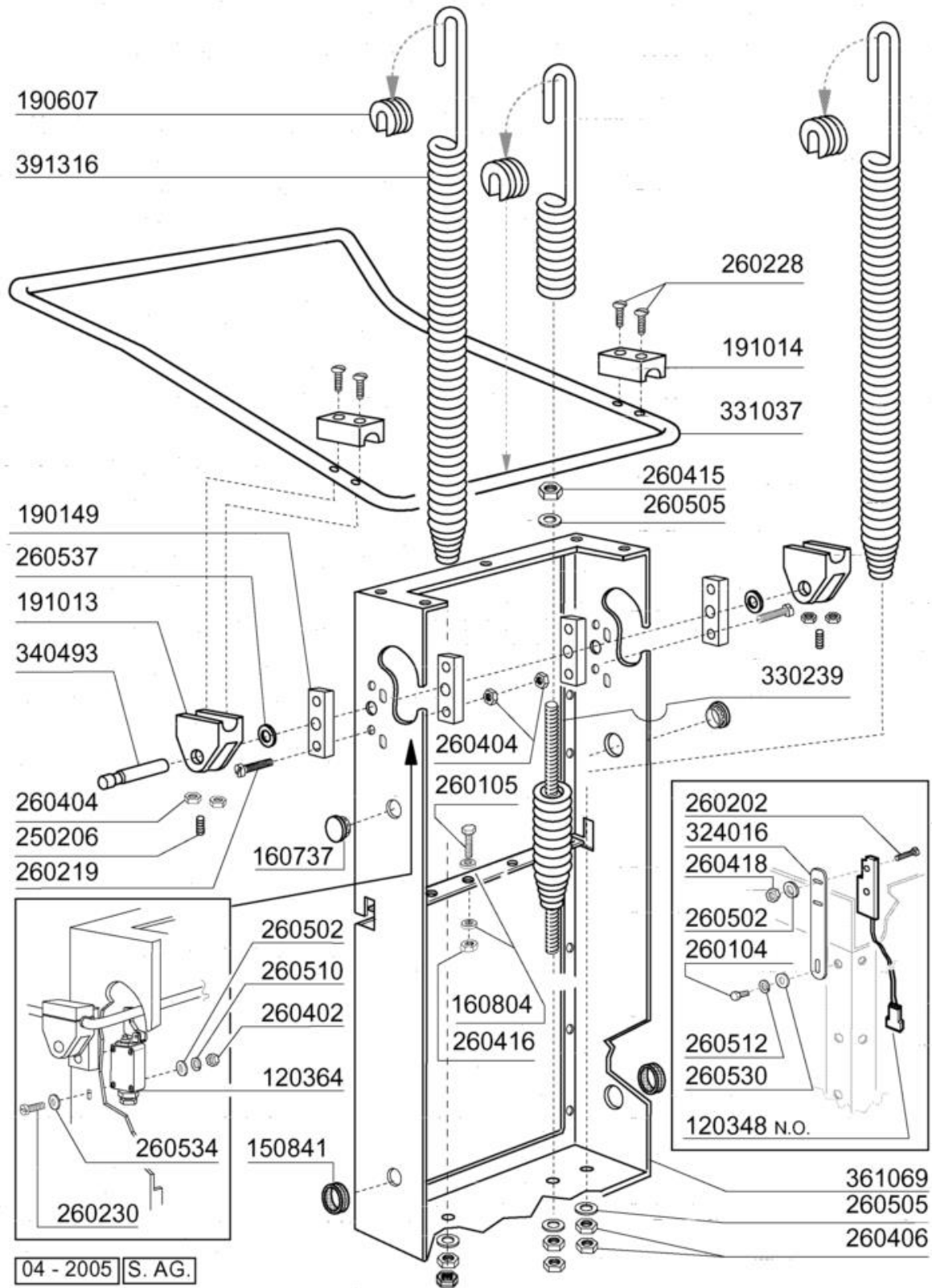


Code	Description	Price (EUR)
120348	MAGN.SWITCH (N.O.)	40.24
150819	CABLE HOLDER PG16 WITH HOLE	
160811	WASHER F2 18X8.5X1 ALGOF	2.94
160907	CONNECTION FOR TABLES C95-155	2.05
180642	GUIDE	37.03
190637	GUIDE FOR DOOR "C"	17.89
190638	ROLLER FOR "C" DOOR GUIDE	2.94
200925	GASKET	4.74
200957	GASKET	8.93
200964	GASKET 618X14 SP.2	8.93
260113	STAINL.ST.TE SCREW 8X20 A2 UNI	0.71
260219	STAINL.ST TCP SCREW 6X35 A2 UN	2.64
260224	TB-SCREW 6X15 B23-10-11-12	2.05
260329		0.71
260404	STAINLESS STEEL NUTS D6 UNI 55	2.05
260504	ST/ST FLAT WASHER D6	1.80
260505	STAINL.STEEL FLAT WASHER D8	1.80
260512	ST/ST GROWER WASHER D6	1.80
260513	GROWER WASHER D8	1.80
260538	WASHER 18X6X1,5 ST/ST	1.48
260543	WASHER D.6 ST/ST	1.86
261015	SCREW 3,9X13	0.47
320534	LOWER FRAME	
324011	GUIDE FOR 530238	26.20
324016	SWITCH BRACKET	18.54
332424	HOSE SUPPORT	9.58
342258	TANK	
342498	INSULATED HOOD	
351421	LEFT PANEL	111.78
351422	RIGHT PANEL	104.11
351767	FRONT PANEL	182.02
351870V01	FRONT PANEL	
440211	LEGS 40x40x1	7.03
530238	RACK SUPPORT C-SERIES	345.53

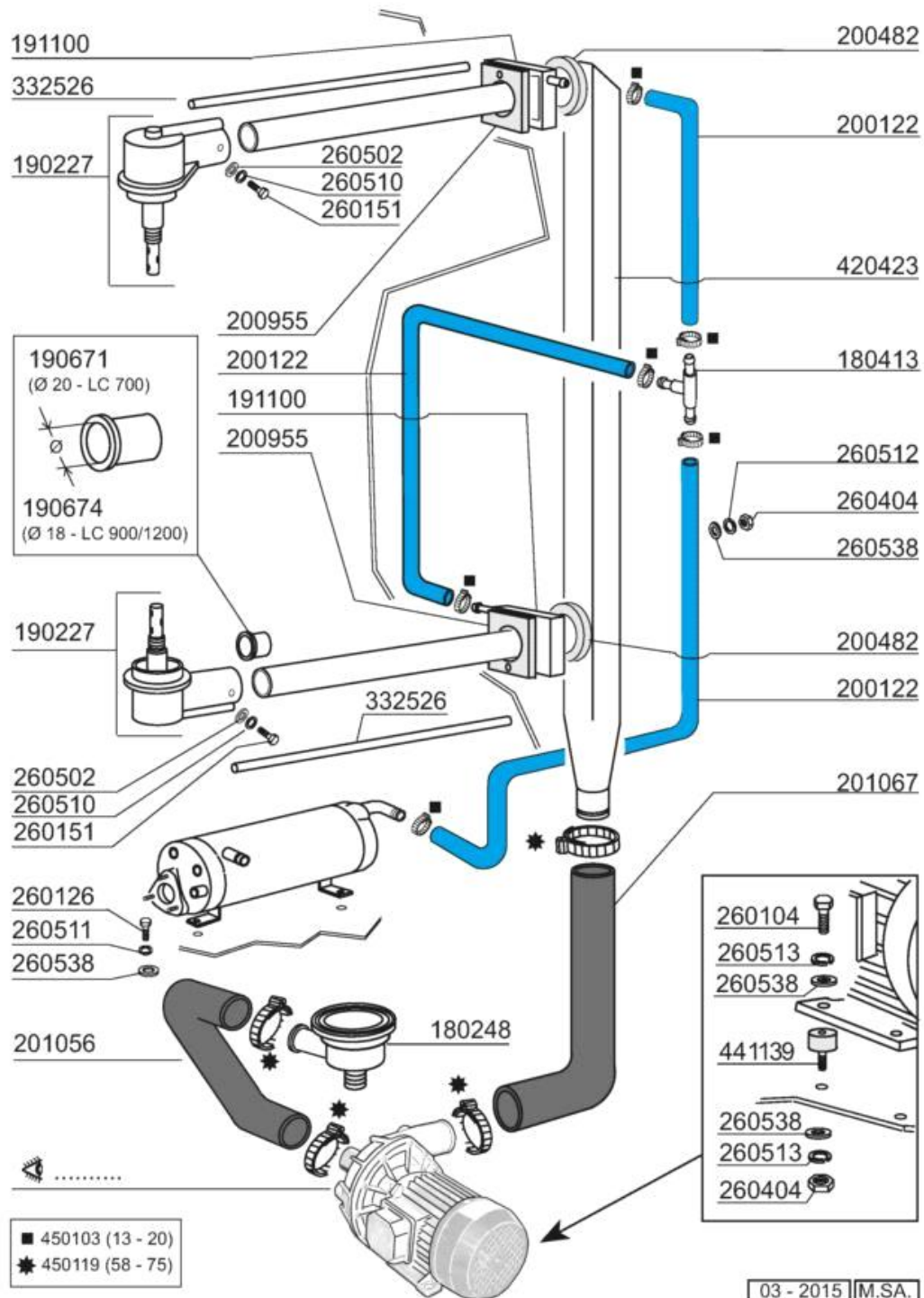


04 - 2005 | S. AG.

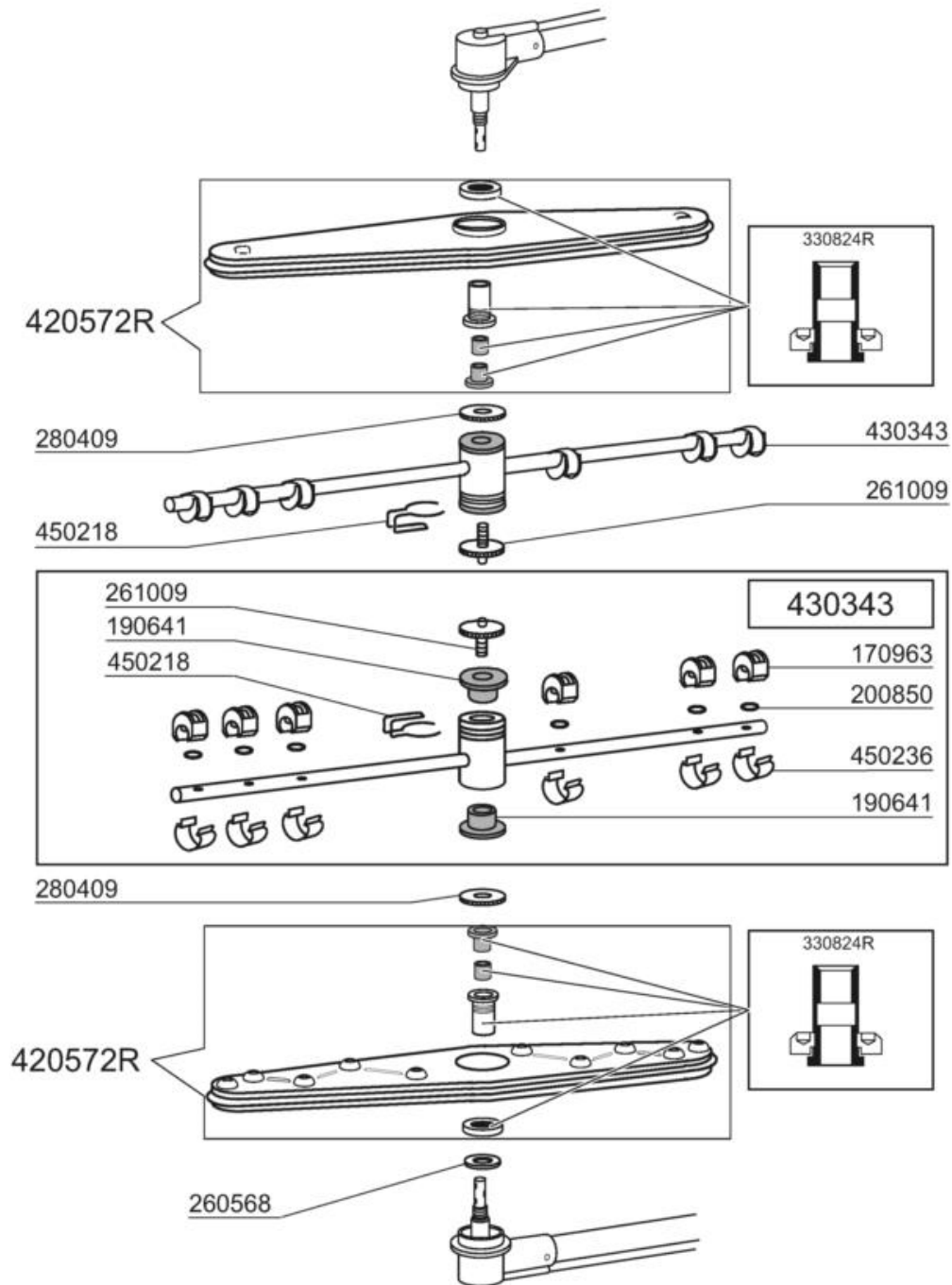
Code	Description	Price (EUR)
110226	HEAT. ELEMENT 3000W 230/400V	126.46
110361	HEAT. ELEMENT 2200W.230V	118.79
130632	PRESSURE SWITCH 1L 75-45	35.14
160201	ELBOW F.TANK INLET MOPLN	3.58
160788	PLUG	5.38
160789	NUT	1.80
161123	HEAT.ELEMENT COVER H42 SNL	4.67
161310	AIR CHAMBER FOR GLASSWASHERS B	
161320	HOSE FOR AIR CHAMBER	31.94
180102	DRAIN PIPE NUT 1"1/2 F45-55	5.19
180248	SUCTION TANK	21.73
180249	NUT	
180729	OVERFLOW PIPE	28.75
180818	STRAINER FOR FC	22.99
200412	GASKET DRAIN 11/2" 45X33X3	1.48
200721	DRAIN HOSE 28X35 3MT.	36.41
200807	O-RING 3,53 X 110,72	9.58
200815	O-RING F. HEAT. ELEM.	2.55
200870	GASKET 18X10X2	3.78
200927	GASKET FOR AIR TRAP	1.80
200950	VITON GASKET	26.20
260404	STAINLESS STEEL NUTS D6 UNI 55	2.05
260512	ST/ST GROWER WASHER D6	1.80
260701	SCREW 3,5X9,5	2.37
270101	HEXAGON LOCK NUT 1/2"	10.87
270121	NUT FOR AIR TRAP	10.22
323496	STRAINERS SUPPORT	55.58
332085	STRAINER LC	347.25
332090	RIGHT STRAINER	37.69
332091	LEFT STRAINER	37.69
342258	TANK	
350774	BRACKET	6.15
351826	BRACKET	28.30
450107	CLAMP FE ZN 38-50 H=12,2	7.66
450125	ELASTIC CLAMP D. 10,4X9,8	3.07
450137	COLLAR CONNECTION WITH BASE 31	2.94
450143	CLAMP D.39,7 X 37,7	3.07
450516	THERMOSTAT SHIELD FOR 2 TERMOS	32.56
460502	GASKET 30X21X2	1.59



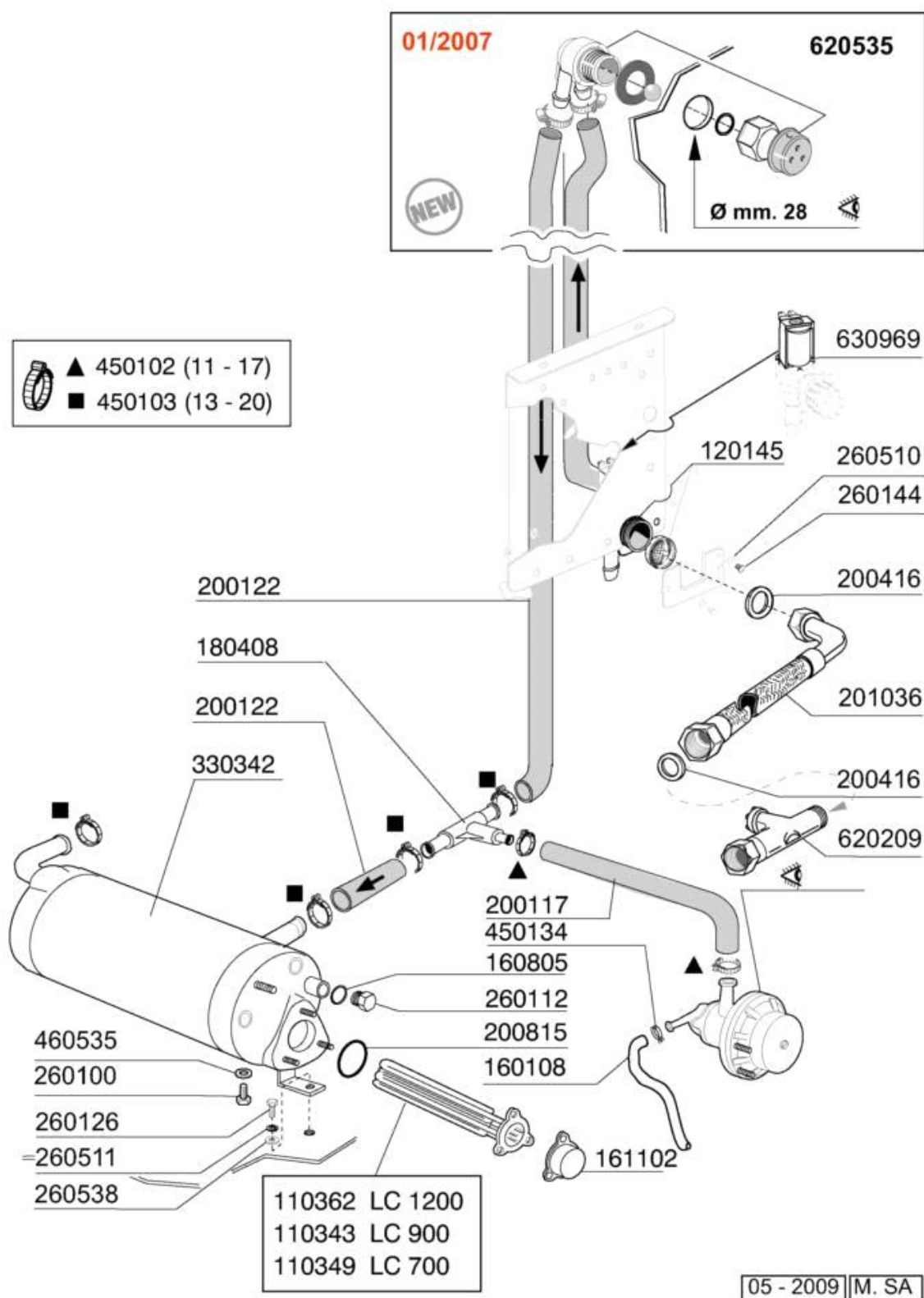
Code	Description	Price (EUR)
120348	MAGN.SWITCH (N.O.)	40.24
120364	LIMIT SWITCH WITH LEVER	66.40
150841	CABLE HOLDER	2.43
160737	PLUG HEYCO D.34,9	3.53
160804	GASKET D.6	0.77
190149	REINFORCEMENT FOR HANDLE SUPP.	2.11
190607	HANDLE BUSH C30-70	3.90
191013	HINGE F. SUPPORT C30-C70	5.64
191014	FLANGE F. HANDLE C30-70	3.26
250206	GRUB SCREW D.6	0.26
260104	STAINL.ST TE-SCREW A2 6X16 UNI	0.31
260105	SCREW TE 6X20	0.38
260202	SCREW TCP 3X16	1.80
260219	STAINL.ST TCP SCREW 6X35 A2 UN	2.64
260228	STAINL.ST SPECIAL SCREW 6X42 3	4.36
260230	SCREW TCP 4X40	2.64
260402	STAINLESS STEEL NUT D4 UNI 55	1.80
260404	STAINLESS STEEL NUTS D6 UNI 55	2.05
260406	NUT 8MA	2.94
260415	STAINLESS STEEL SELF-LOCKING N	3.20
260416	STAINLESS STEEL NUTS M6	2.37
260418	SELF-LOCKING NUT M4	2.05
260502	S/S FLAT WASHER D.4	1.80
260505	STAINL.STEEL FLAT WASHER D8	1.80
260510	GROWER WASHER D.4	2.18
260512	ST/ST GROWER WASHER D6	1.80
260530	STAINL.ST WASHER 7X22X2	2.64
260534	WASHER	1.94
260537	STAINL.STEEL FLAT WASHER D13X2	1.35
324016	SWITCH BRACKET	18.54
330239	ROD	9.58
331037	HANDLE C95-155-165 ISOLATED	131.57
340493	PIN F. HINGE C30	9.58
361069	BACK FRAME	360.21
391316	SPRING FOR HANDLE C85/140-G75	76.64



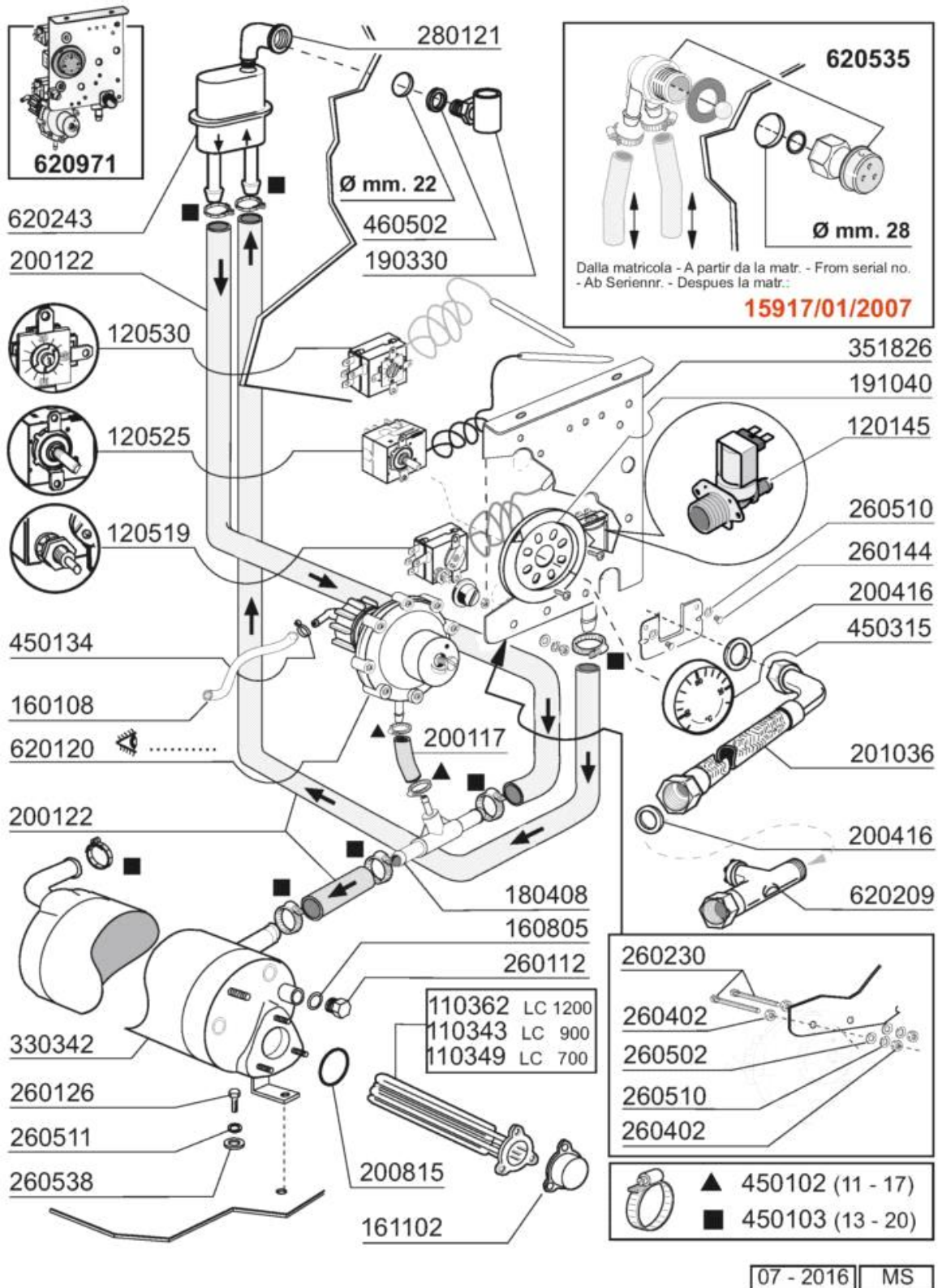
Code	Description	Price (EUR)
180248	SUCTION TANK	21.73
180413	TEE NIPPLE D.11,5 - RINSE ASSE	3.90
190227	ARM SUPPORT	66.42
190671	BUSH	33.21
190674	BUSH	29.37
191100	RINSE COLLECTOR C-LC	8.32
200122	HOSE 11X19	16.60
200482	GASKET 60X54 RAMP C140	4.36
200955	GASKET	7.03
201056	WASH PUMP INLET HOSE	56.85
201067	OUTLET HOSE	53.02
260104	STAINL.ST TE-SCREW A2 6X16 UNI	0.31
260126	SCREW TE 5X12	0.26
260151	SCREW TE 4X12	0.52
260404	STAINLESS STEEL NUTS D6 UNI 55	2.05
260502	S/S FLAT WASHER D.4	1.80
260510	GROWER WASHER D.4	2.18
260511	GROWER WASHER D.5	1.80
260512	ST/ST GROWER WASHER D6	1.80
260513	GROWER WASHER D8	1.80
260538	WASHER 18X6X1,5 ST/ST	1.48
332526	RINSE HOSE	9.58
420423	WASH RAMP C/LC	209.49
441139	VIBRATION-DAMPING FEET 25X20X6	8.93
450103	CLAMP FE ZN. 13-20 H=9	3.96
450119	CLAMP FE ZN. 58-75 H=12,2	8.93



Code	Description	Price (EUR)
170963	RINSE JET X FC	0.90
190641	BUSH FOR C95-155-165 RINSE ARM	7.66
200850	O-RING	0.21
260568	S/S FLAT WASHER D.28X21X1	10.00
261009	RETAIN.SCREW FOR WASH-RINSE AR	16.60
280409	RETAIN.LOCK NUT CENTR.CROSS C1	12.77
330824R	WASHARM BUSH KIT	51.10
420572R	WASH ARM LC	96.46
430343	RINSE ARM LC700/900/1200	86.85
450218	SPRING F.RINSE ARM RETAIN.SCRE	4.98
450236	SPRING FOR WASHER 170963	1.03



Code	Description	Price (EUR)
110343	HEAT.ELEM. 8000W 220/380V	169.88
110349	HEAT.ELEMENT 6000W.230/400V	93.26
110362	HEAT.ELEMENT 9000W 220/380V	170.55
120145	SOLENOID VALVE 12 LT 1 WAY	22.36
160108	INJECT.INLET HOSE D.8X5	3.07
160805	GASKET D.8	2.37
161102	ELEMENT COVER MOPL. H50 (HIGH)	6.40
180408	TEE-NIPPLE F.INJECT.W/CENTR.RE	5.74
200117	RUBBER HOSE 7X16	21.73
200122	HOSE 11X19	16.60
200416	GASKET D. 3/4"	0.64
200815	O-RING F. HEAT. ELEM.	2.55
201036	INLET HOSE 2 MT	48.55
260100	SCREW TE 6X8 INOX	
260112	STAINLESS STEEL TE-SCREW 8X16	0.71
260126	SCREW TE 5X12	0.26
260144	SCREW TE 4X6	1.21
260510	GROWER WASHER D.4	2.18
260511	GROWER WASHER D.5	1.80
260538	WASHER 18X6X1,5 ST/ST	1.48
330342	BOILER C1000/1300-FC-LC	
450102	CLAMP FE ZN 11-17 H=9	6.40
450103	CLAMP FE ZN. 13-20 H=9	3.96
450134	ELASTIC HOSE CLIP D.9,3/8,8	0.26
460535	GASKET FOR BOILER PLUG BHC	1.03
620209	INLET WATER FILTER	28.10
620535	VACUUM BREAKER	25.56
630969	COIL S4216 220/50HZ	



Code	Description	Price (EUR)
110343	HEAT.ELEM. 8000W 220/380V	169.88
110349	HEAT.ELEMENT 6000W.230/400V	93.26
110362	HEAT.ELEMENT 9000W 220/380V	170.55
120145	SOLENOID VALVE 12 LT 1 WAY	22.36
120519	SAFETY THERMOSTAT 95-125°	78.57
120525	BOOSTER THERMOSTAT 2 TEMPERAT.	72.18
120530	THERMOSTAT 0-90°	33.86
160108	INJECT.INLET HOSE D.8X5	3.07
160805	GASKET D.8	2.37
161102	ELEMENT COVER MOPL. H50 (HIGH)	6.40
180408	TEE-NIPPLE F.INJECT.W/CENTR.RE	5.74
190330	TEE FOR VAACUM BREAKER	4.22
191040	FRAME F.THERMOSTAT KNOB	2.55
200117	RUBBER HOSE 7X16	21.73
200122	HOSE 11X19	16.60
200416	GASKET D. 3/4"	0.64
200815	O-RING F. HEAT. ELEM.	2.55
201036	INLET HOSE 2 MT	48.55
260112	STAINLESS STEEL TE-SCREW 8X16	0.71
260126	SCREW TE 5X12	0.26
260144	SCREW TE 4X6	1.21
260230	SCREW TCP 4X40	2.64
260402	STAINLESS STEEL NUT D4 UNI 55	1.80
260502	S/S FLAT WASHER D.4	1.80
260510	GROWER WASHER D.4	2.18
260511	GROWER WASHER D.5	1.80
260538	WASHER 18X6X1,5 ST/ST	1.48
280121	ELL FOR VAACUM BREAKER	
330342	BOILER C1000/1300-FC-LC	
351826	BRACKET	28.30
450102	CLAMP FE ZN 11-17 H=9	6.40
450103	CLAMP FE ZN. 13-20 H=9	3.96
450134	ELASTIC HOSE CLIP D.9,3/8,8	0.26
450315	KNOB F. THERMOSTAT 90°	0.83
460502	GASKET 30X21X2	1.59
620120	RINSE AID INJECTOR	80.48
620209	INLET WATER FILTER	28.10
620243	VACUUM BREAKER (WITHOUT KIT)	
620535	VACUUM BREAKER	25.56
620971		

Fino alla Matricola - Up to serial number
jusqu'à la matr. - Bis Seriennr.
Hasta la matr.
DA002913/03/2013

630330

630252

630411

630501

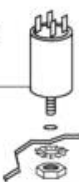
632501 50 HZ

632502 60 HZ

630138


630254

631202
16 μ F



LC 700

100801
220/240 V
50 Hz - HP 1
Kw 0,75 (5223)



630306

630252

630411

630501

631653 50 HZ


631654 60 HZ

630138

630253

LC 900

100797
230/400 V
50Hz - HP 1.5
Kw 1,1 (5233)



630306

630252

630411

630501

631618 50 HZ


631647 60 HZ

630138

630253

LC 1200

100795
230/400 V
50 Hz - HP 2
Kw 1,5 (5234)

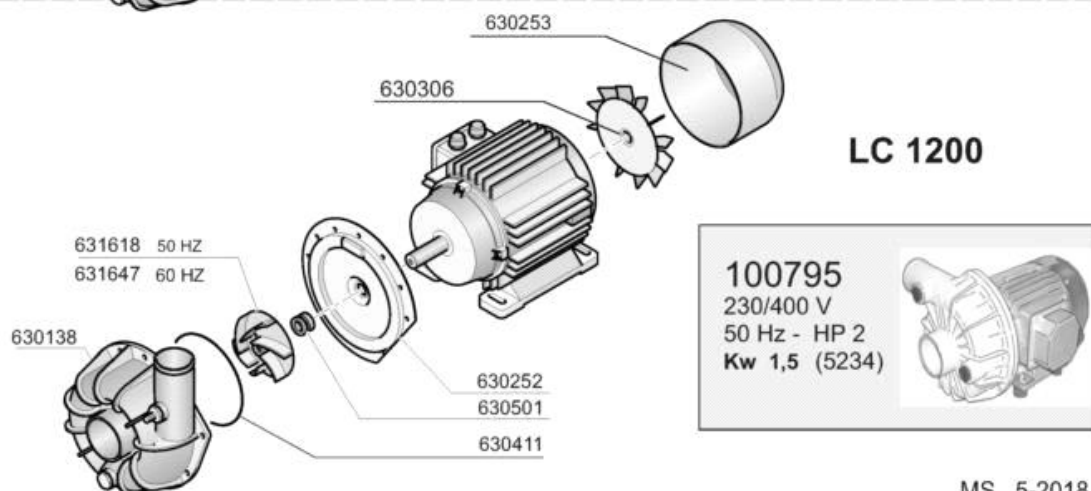
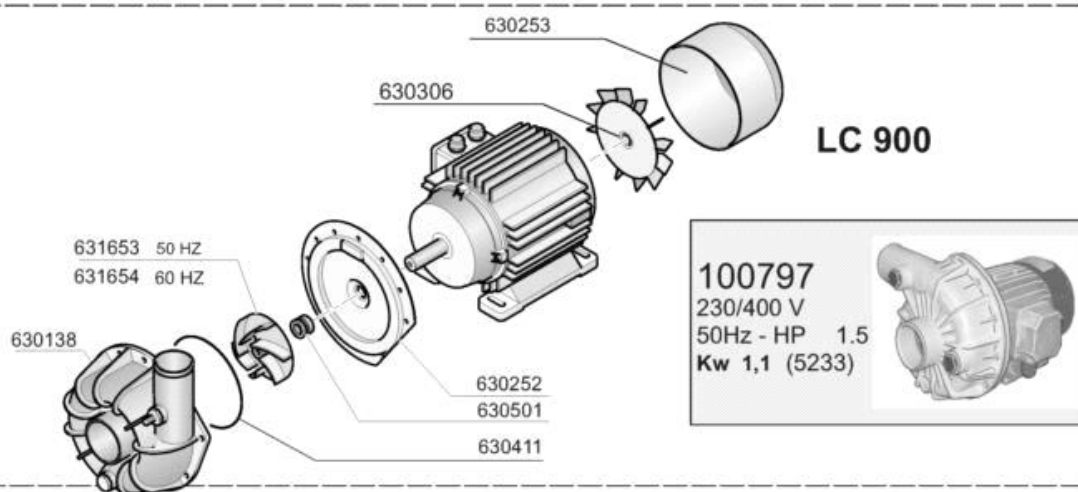
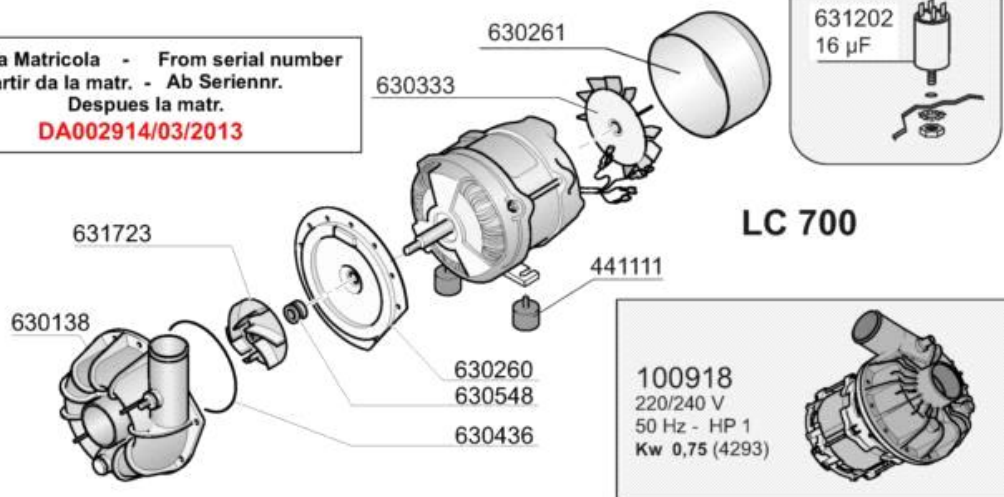


05 - 2013

MS

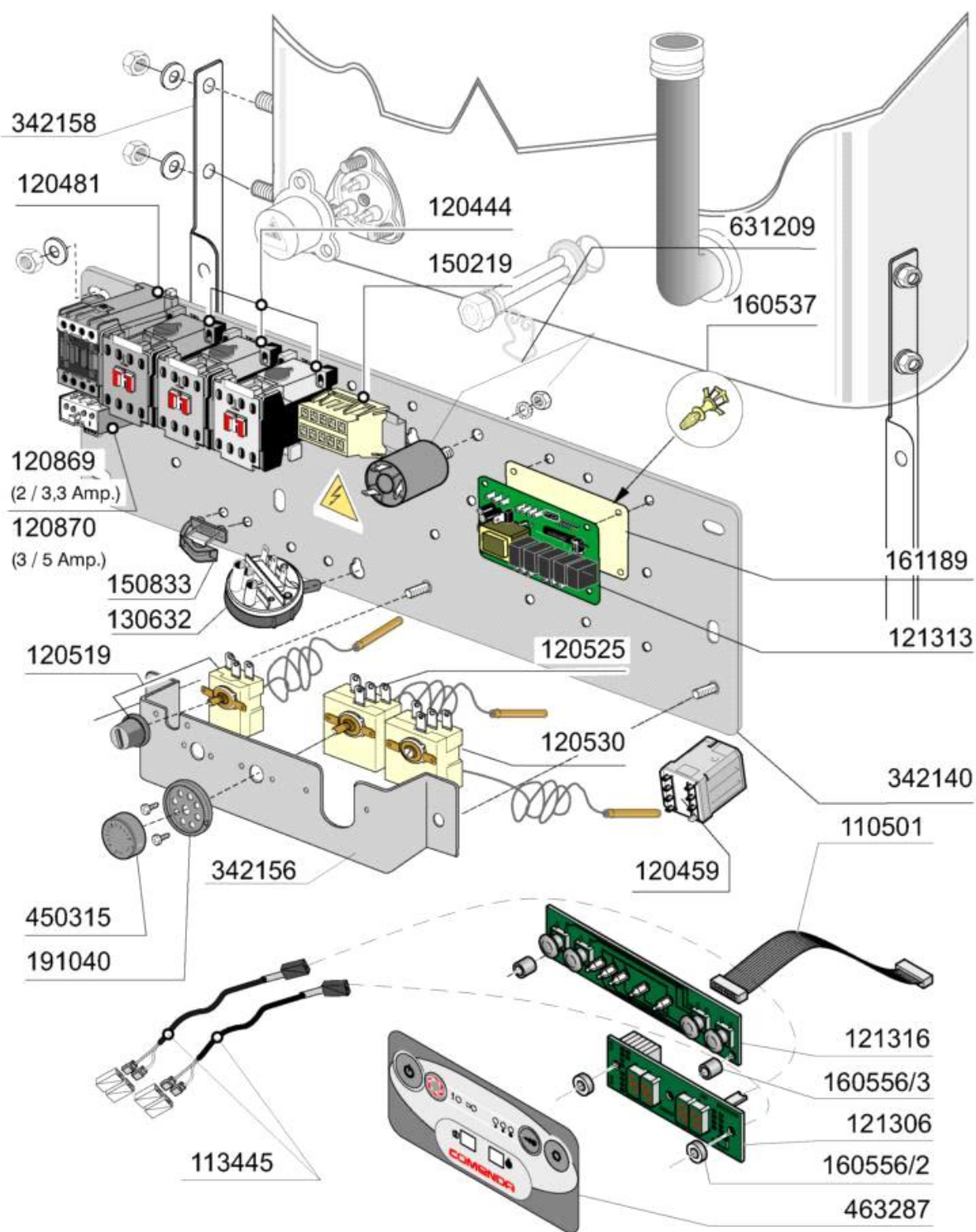
Code	Description	Price (EUR)
100795	PUMP 2HP 380/3/50HZ	615.07
100797	PUMP HP 1,5 380/3/50	527.56
100801	PUMP 1HP 230/1	395.98
630138	VOLUTE FOR PUMP LC	67.06
630252	BACK PLATE PUMP LC	135.41
630253	FAN HOUSING FOR PUMP 100797	30.66
630254	FAN HOUSING FOR PUMP 100801	33.80
630306	PUMP FAN IMPELLOR FI HP.2-3	33.86
630330	PUMP 100801 FAN IMPELLOR	20.81
630411	O-RING PUMP FI HP 2-2,7	30.02
630501	SEAL FOR PUMP HP 2-3-3,2	38.00
631202	CONDENSER 16 MF 450V	15.34
631618	PUMP IMPELLER F HP2-D.116,5	135.00
631647	IMPELLER D.100-60HZ-1204/5	65.79
631653	PUMP IMPELLER 1,5 HP 50HZ 1241	70.25
631654	PUMP IMPELLER 1,5HP 50HZ 1241	140.50
632501	PUMP IMPELLER	131.00
632502	PUMP IMPELLER 1HP 60HZ-5223	126.00

Dalla Matricola - From serial number
A partir da la matr. - Ab Serienr.
Despues la matr.
DA002914/03/2013



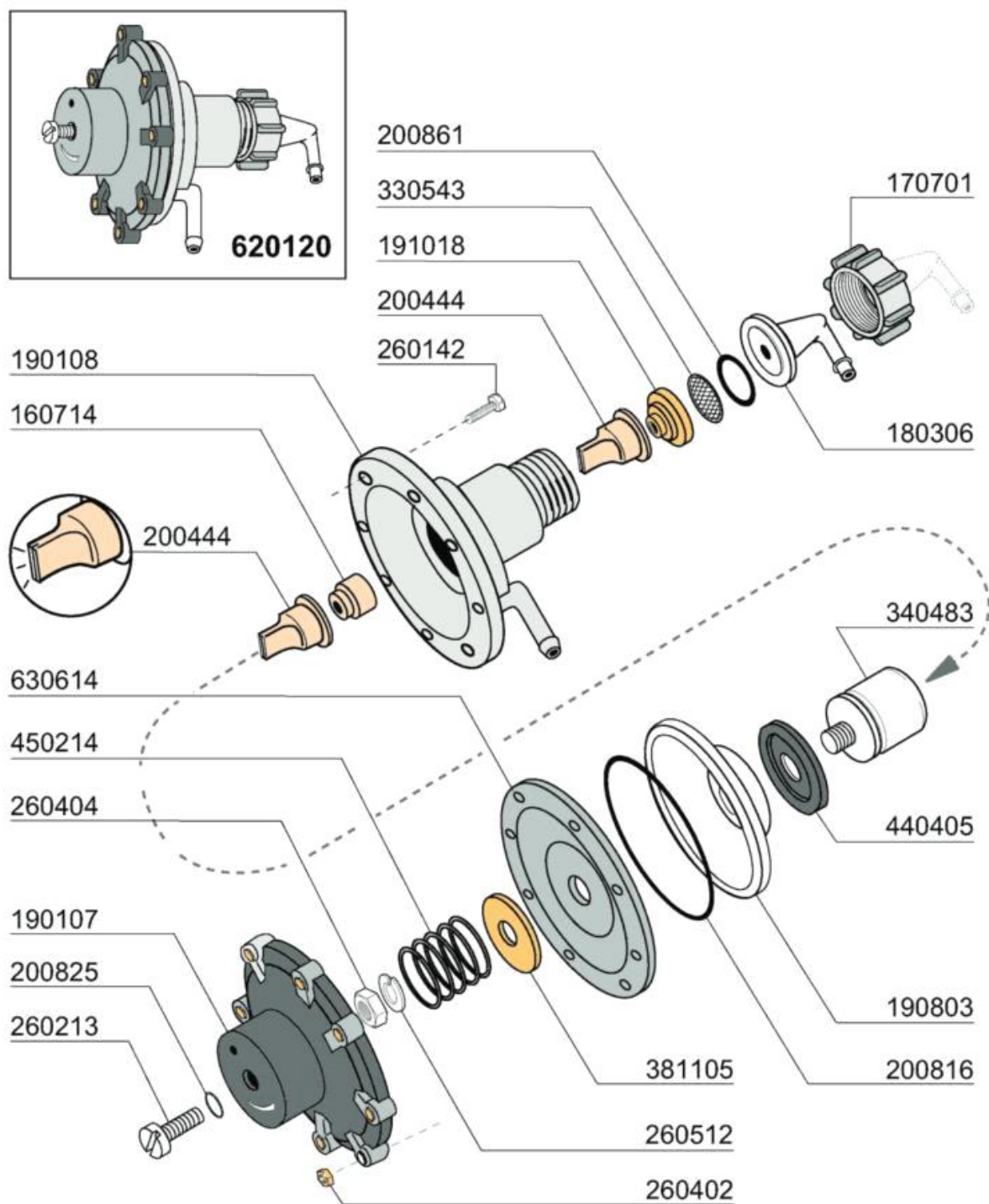
MS. 5-2018

Code	Description	Price (EUR)
100795	PUMP 2HP 380/3/50HZ	615.07
100797	PUMP HP 1,5 380/3/50	527.56
100918	PUMP HP 1 230V/1	298.90
441111	PUMP FEET 25X25XM6	10.87
630138	VOLUTE FOR PUMP LC	67.06
630252	BACK PLATE PUMP LC	135.41
630253	FAN HOUSING FOR PUMP 100797	30.66
630260	FLANGE	
630261	COVER	
630306	PUMP FAN IMPELLOR FI HP.2-3	33.86
630333	FAN	
630411	O-RING PUMP FI HP 2-2,7	30.02
630436	PUMP JOINT	27.48
630501	SEAL FOR PUMP HP 2-3-3,2	38.00
630548	SEAL FOR PUMP CRC-2-DX(1001R)	48.55
631202	CONDENSER 16 MF 450V	15.34
631618	PUMP IMPELLER F HP2-D.116,5	135.00
631647	IMPELLER D.100-60HZ-1204/5	65.79
631653	PUMP IMPELLER 1,5 HP 50HZ 1241	70.25
631654	PUMP IMPELLER 1,5HP 50HZ 1241	140.50
631723	PUMP IMPELLER	135.00



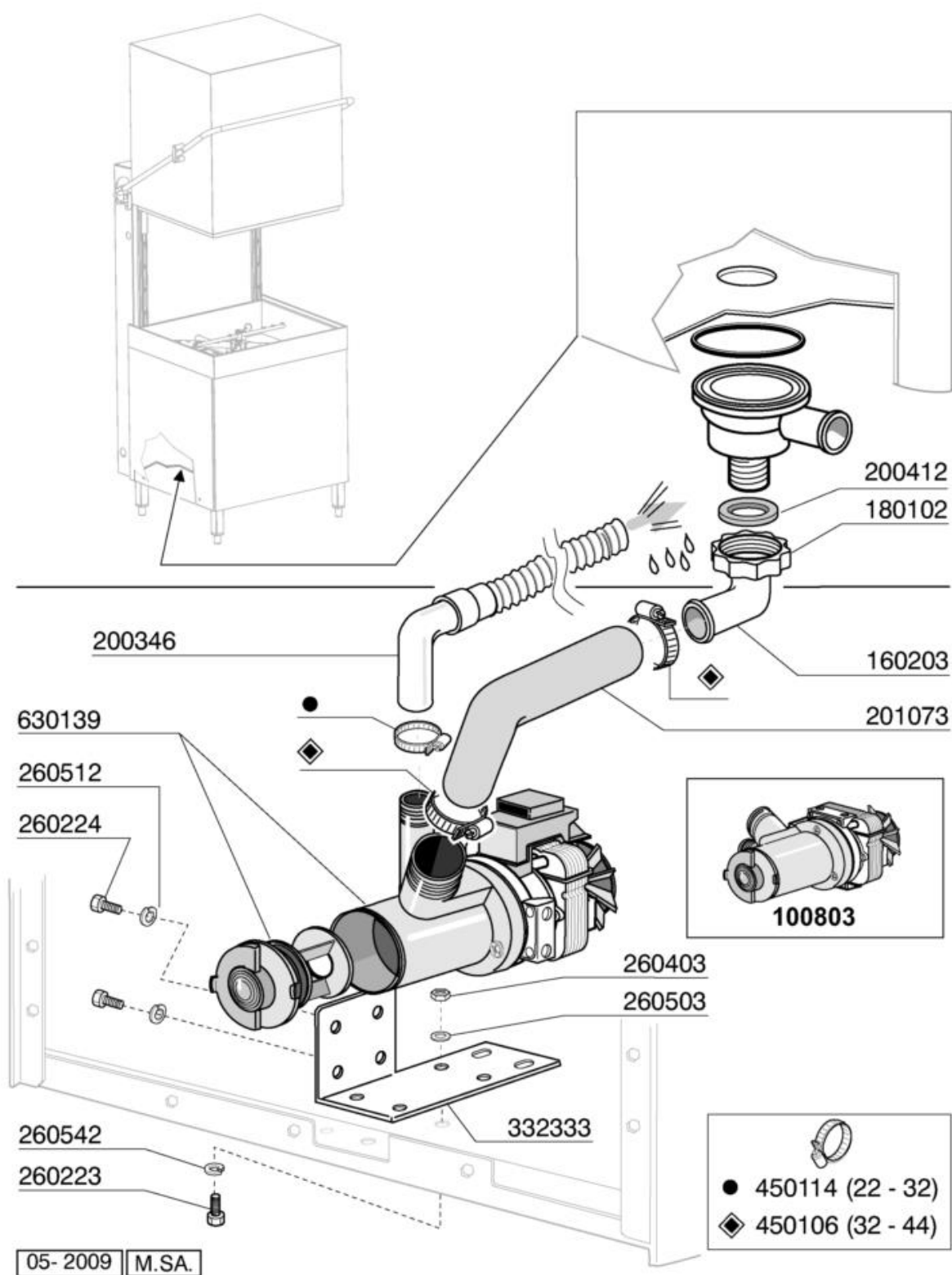
07 - 2012 M.S.A.

Code	Description	Price (EUR)
110501	CABLE 1000 mm. 10P	17.89
113445	CABLE	60.03
120444	CONTACTOR 9A 220V 50HZ	52.37
120459	AUXIL.RELE 16A 220V	44.70
120481	CONTACTOR 9A-230V 50/60HZ	
120519	SAFETY THERMOSTAT 95-125°	78.57
120525	BOOSTER THERMOSTAT 2 TEMPERAT.	72.18
120530	THERMOSTAT 0-90°	33.86
120869	OVERLOAD RELAY 2/3,3	71.53
120870	OVERLOAD RELAY 3/5	71.53
121306	PCB DISPLAY	59.42
121313	PCB FE 2010 SOFTSTART	117.52
121316	PCB	56.85
130632	PRESSURE SWITCH 1L 75-45	35.14
150219	TERMINAL BLOCK 5P MMQ165VD26	
150833	CABLE HOLDER BC/BR	
160537	ELECTRONIC CARD SPACER	1.28
160556/2	SPACER FLIGHT	0.83
160556/3	SPACER FLIGHT D.4,3 X L.11,1	0.64
161189	COVER	10.22
191040	FRAME F.THERMOSTAT KNOB	2.55
342140	SUPPORT	
342156	LOWER WASH ARM SUPPORT	53.64
342158	LOWER WASH ARM SUPPORT	33.86
450315	KNOB F. THERMOSTAT 90°	0.83
463287	PLATE GE	60.68
631209	ANTI-NOISE FILTER	13.42



09 - 2007 | S. AG.

Code	Description	Price (EUR)
160714	PLUG FOR RINSE AID INJECTOR MO	1.86
170701	LOCK NUT 1/2" F.INJECTOR	4.15
180306	NIPPLE F.RINSE AID INJECTOR	3.39
190107	COVER FOR RINSE AID DISPENSER	
190108	VOLUTE FOR RINSE AID DISPENSER	5.74
190803	GASKET SUPPORT RING F.INJECT	3.07
191018	FILTER SUPPORT RINSE AID INJEC	4.74
200444	SUCTION VALVE RINSE INJECTOR	2.89
200816	O-RING 2,5X59,2X64,2 RINSE INJ	0.58
200825	O-RING 3X5X11 RINSE INJECTOR	0.33
200861	O-RING 14X18X2	0.26
260142	SCREW TE 4X16	0.52
260213	SCREW TCP 5X25	1.94
260402	STAINLESS STEEL NUT D4 UNI 55	1.80
260404	STAINLESS STEEL NUTS D6 UNI 55	2.05
260512	ST/ST GROWER WASHER D6	1.80
330543	FILTER RINSE AID INJECTOR D.17	2.75
340483	PISTON FOR RINSE AID DISPENSER	
381105	DIAPHRAGME DISC	2.75
440405	GASKET FOR RINSE AID INJ.	1.86
450214	SPRING RINSE AID INJECTOR	3.32
620120	RINSE AID INJECTOR	80.48
630614	DIAPHRAGM RINSE INJECTOR	8.32



Code	Description	Price (EUR)
100803	DRAIN PUMP WITH FILTER 220/50	113.06
160203	ELBOW 1"1/2 N-S-F-C /DRAIN	5.74
180102	DRAIN PIPE NUT 1"1/2 F45-55	5.19
200346	DRAIN HOSE GLASSWASHER	27.48
200412	GASKET DRAIN 1 1/2" 45X33X3	1.48
201073	INLET HOSE LC/CE DRAIN PUMP	28.75
260223	M5X12 MSH/HD SCREW SPECIAL S/S	2.05
260224	TB-SCREW 6X15 B23-10-11-12	2.05
260403	NUTS D.5	1.80
260503	STAINL.STEEL FLAT WASHER D5 UN	1.80
260512	ST/ST GROWER WASHER D6	1.80
260542	WASHER D.5	0.47
332333	BRACKET FOR DRAIN PUMP	21.08
450106	CLAMP FE ZN 32-44 H=12,2	7.66
450114	CLAMP FE ZN.22-32 H=12,2	7.03
630139	DRAIN PUMP VOLUTE WITH FILTER	38.97