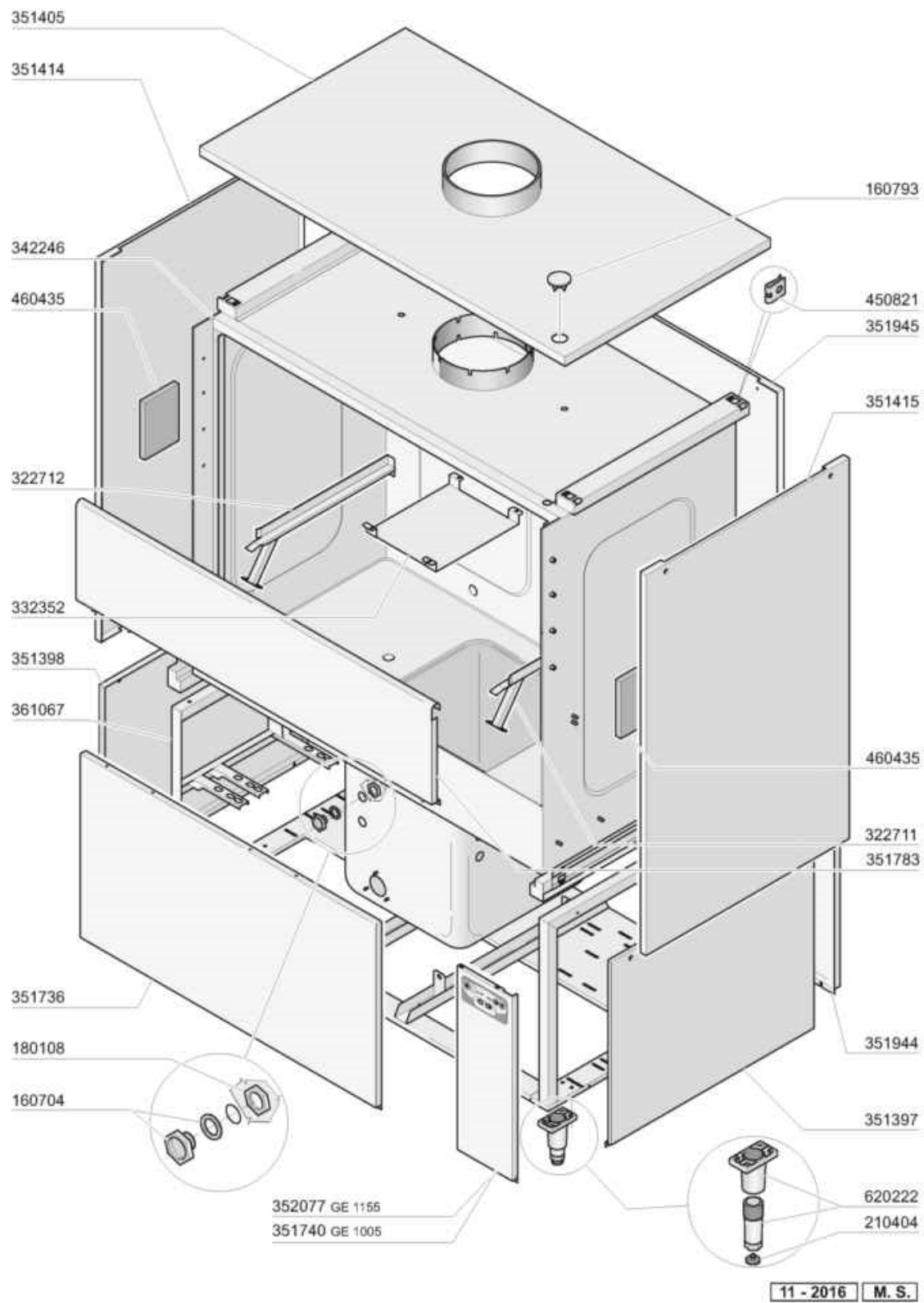
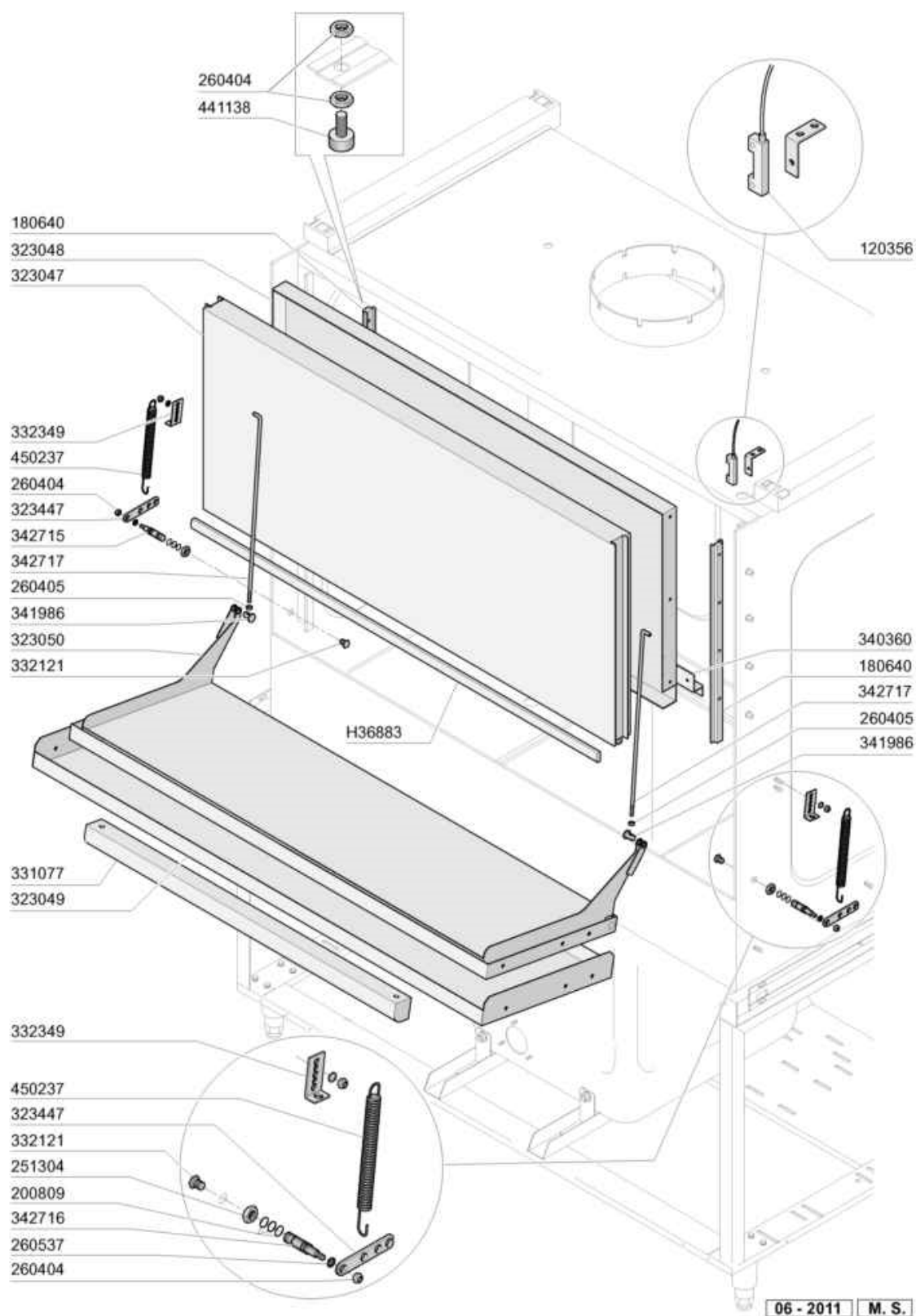


- 1 Hood
- 2 Door component
- 3 Upper wash and rinse arms
- 4 Lower wash and rinse arms
- 5 Tank
- 6 Wash pump
- 7 Rinse assembly
- 8 Control box
- 9 Pump



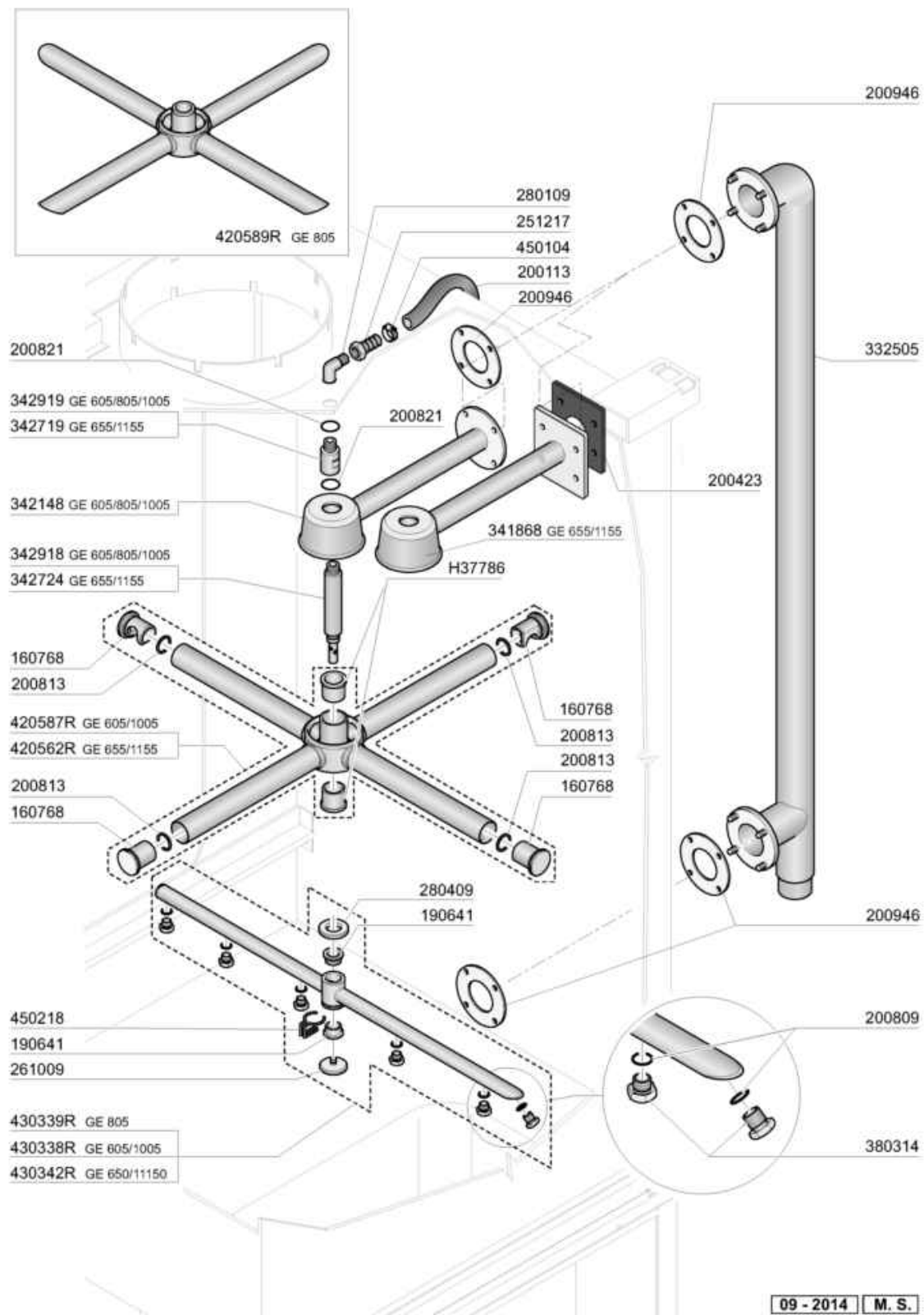
Hood

Code	Description	Price (EUR)
160704	BLACK PLUG WITH GASKET 1/2"GAK	6.00
160793	PLUG	0.00
180108	PLASTIC NUT 1/2"	3.65
210404	BLACK RUBBER FOOT S90 NE SE	3.05
322711	RIGHT RAIL GE	48.00
322712	RAIL LEFT GE	48.00
332352	BRACKET	0.00
342246	HOOD+TANK GE100	0.00
351397	RIGHT SIDE PANEL GE	0.00
351398	SIDE LEFT PANEL GE	0.00
351405	TOP PANEL GE115	0.00
351414	SIDE LEFT PANEL GE	310.50
351415	SIDE RIGHT PANEL GE	0.00
351736	FRONT PANEL GE115	266.00
351740	CONTROL PANEL GE	0.00
351783	FRONT PANEL GE100	0.00
351944	BACK PANEL GE115	246.00
351945	UPPER BACK PANEL GE115	171.00
352077		0.00
361067	FRAME GE100	0.00
450821	SPRING CLIP FASTENER SNU 3634	0.25
460435	ISOLATION PANEL	0.00
620222	COMPLETE ALUMINIUM LEGS	30.00



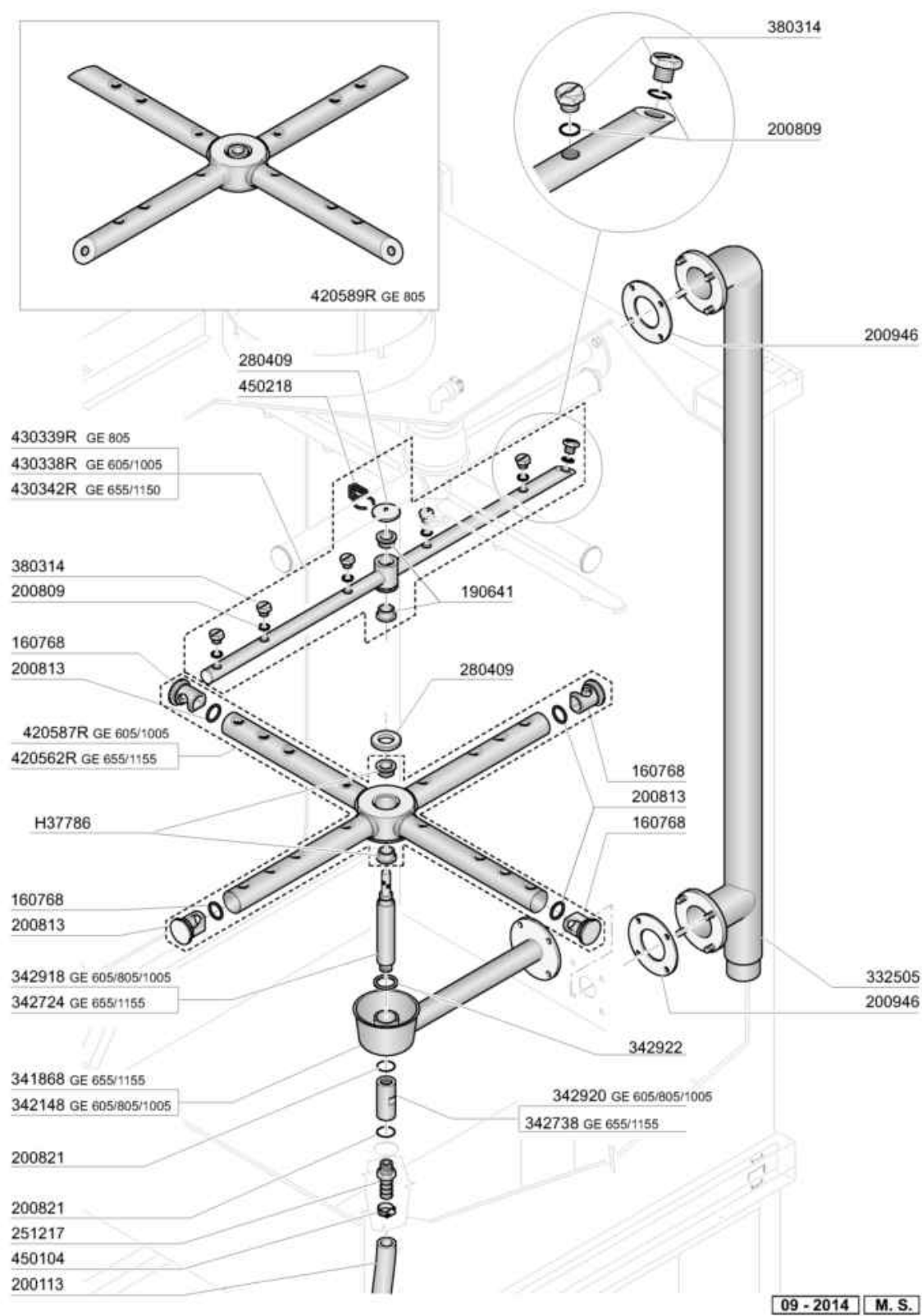
Door component

Code	Description	Price (EUR)
120356	DOOR MAGN.SWITCH	25.50
180640	DOOR RAIL FOR GE	42.00
200809	OR GASKET 1,78X8,73X12,29	5.50
251304	ST/ST LOCK NUT 3/8	27.50
260404	STAINLESS STEEL NUTS D6 UNI 55	1.60
260405	NUT D.8	1.60
260537	STAINL.STEEL FLAT WASHER D13X2	1.05
323047	UPPER DOOR GE100-115	275.00
323048	BACK PANEL FOR UPPER DOOR GE10	464.50
323049	LOWER DOOR GE100-115	301.50
323050	BACK PANEL FOR LOWER DOOR GE10	506.00
323447	SPRING CONNECTION	18.50
331077	GE DOOR HANDLE	163.00
332121	BUSH FOR HOOD GE	8.50
332349	BRACKET FOR DOOR SPRING GE	16.50
340360	BRACKET GE115	14.50
341986	"GL"-DOOR PIN	13.00
342715	LEFT SPINDLE FOR GE DOOR	24.00
342716	RIGHT SPINDLE GE DOOR	24.00
342717	DOOR SPINDLE	52.50
441138	PROTECTION	25.50
450237	DOOR SPRING GE	27.50
H36883	GASKET FOR DOOR GE	14.00



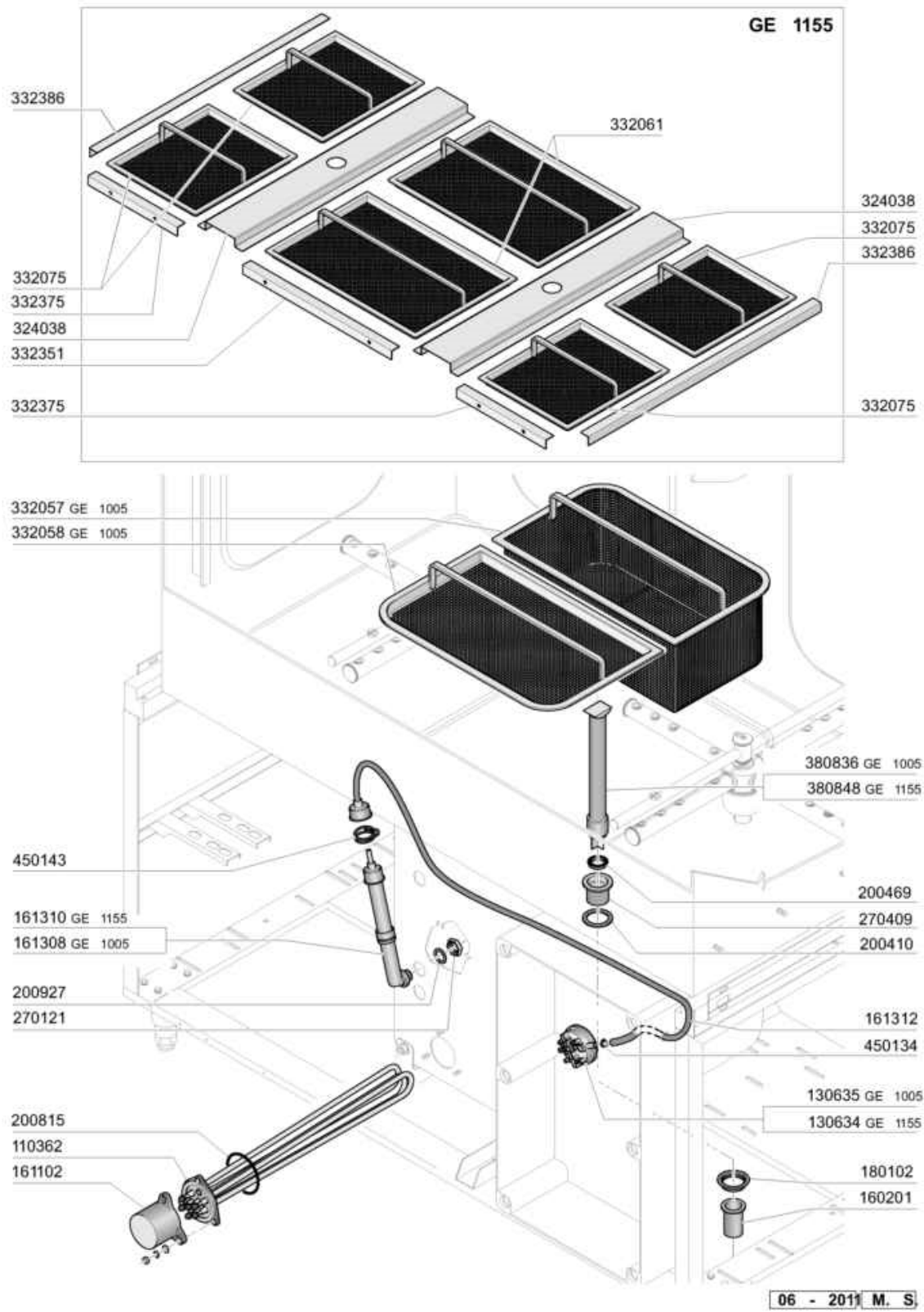
Upper wash and rinse arms

Code	Description	Price (EUR)
160768	PLUG FOR "C95-155" WASH ARM	2.00
190641	BUSH FOR C95-155-165 RINSE ARM	6.00
200113	RUBBER HOSE 12 X 22	15.00
200423	GASKET TUBE 100X100 HOLE48,5X3	4.50
200809	OR GASKET 1,78X8,73X12,29	5.50
200813	OR GASKET 2,21X16,36X20,78	1.60
200821	O-RING 2,62X20,63	0.20
200946	GASKET WASH COLUMN GE	5.50
251217	ST/ST NIPPLE 3/8	37.00
261009	RETAIN.SCREW FOR WASH-RINSE AR	13.00
280109	CRANK 90° F.F 3/8"	9.50
280409	RETAIN.LOCK NUT CENTR.CROSS C1	10.00
332505	GE WASH COLUMN	287.50
341868	GE65 WASH ARM SUPPORT	234.50
342148	SUPPORT BRAS	88.50
342719	RINSE SPINDLE GE65	29.00
342724	WASH ARM SPINDLE GE65	63.50
342918	PIN	28.50
342919	EXTENSION	40.00
380314	RINSE JETS 801/HR	6.50
430339R	RINSE ARM GE80-85	117.00
450104	CLAMP FE ZN H=12,5 15-24	4.70
450218	SPRING F.RINSE ARM RETAIN.SCRE	3.90
H37786	WASH ARM BUSH	7.50



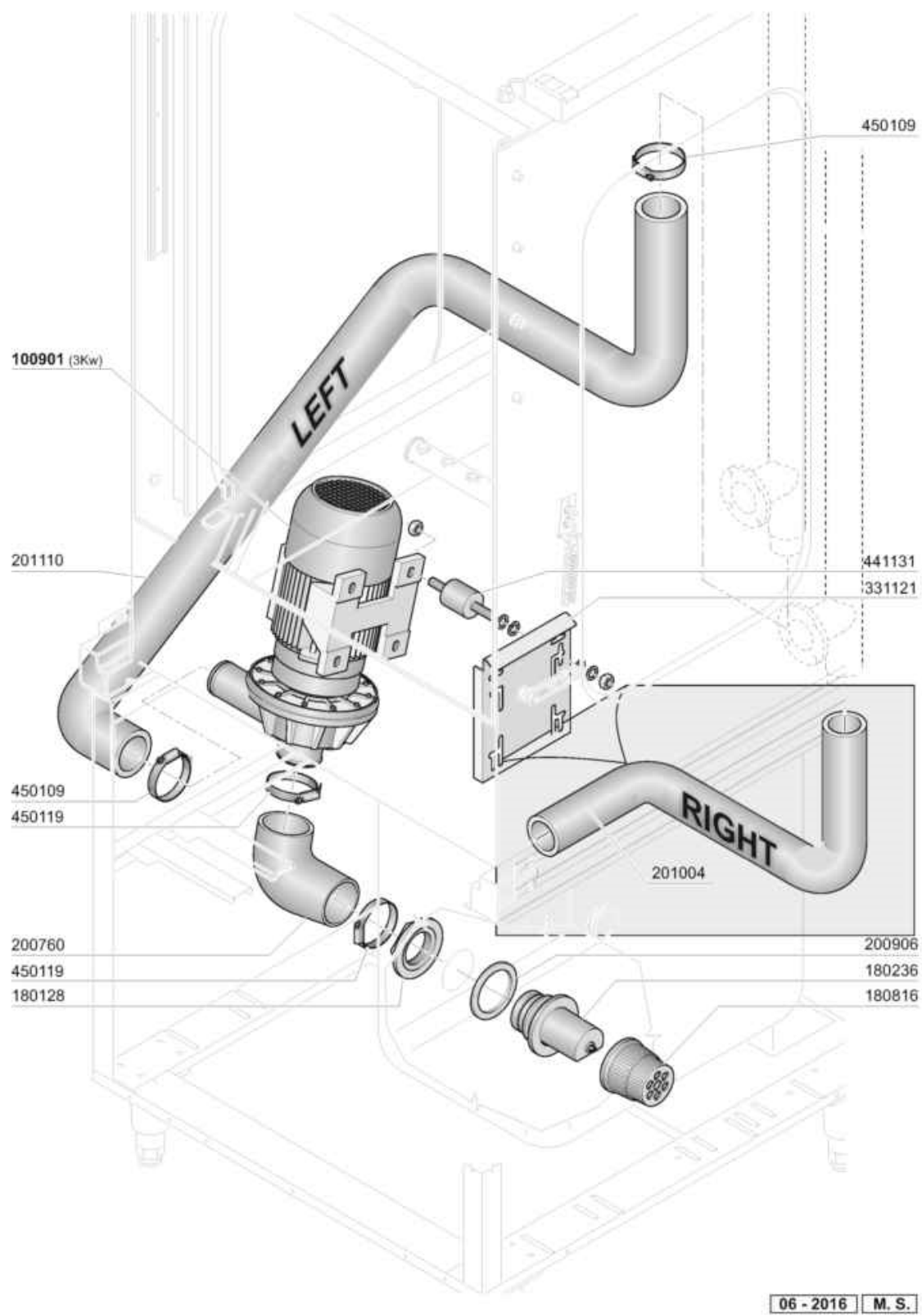
Lower wash and rinse arms

Code	Description	Price (EUR)
160768	PLUG FOR "C95-155" WASH ARM	2.00
190641	BUSH FOR C95-155-165 RINSE ARM	6.00
200113	RUBBER HOSE 12 X 22	15.00
200809	OR GASKET 1,78X8,73X12,29	5.50
200813	OR GASKET 2,21X16,36X20,78	1.60
200821	O-RING 2,62X20,63	0.20
200946	GASKET WASH COLUMN GE	5.50
251217	ST/ST NIPPLE 3/8	37.00
280409	RETAIN.LOCK NUT CENTR.CROSS C1	10.00
332505	GE WASH COLUMN	287.50
341868	GE65 WASH ARM SUPPORT	234.50
342148	SUPPORT BRAS	88.50
342724	WASH ARM SPINDLE GE65	63.50
342738	EXTENSION	27.00
342918	PIN	28.50
342920		0.00
342922	SPACER FLIGHT	22.00
380314	RINSE JETS 801/HR	6.50
430339R	RINSE ARM GE80-85	117.00
450104	CLAMP FE ZN H=12,5 15-24	4.70
450218	SPRING F.RINSE ARM RETAIN.SCRE	3.90
H37786	WASH ARM BUSH	7.50



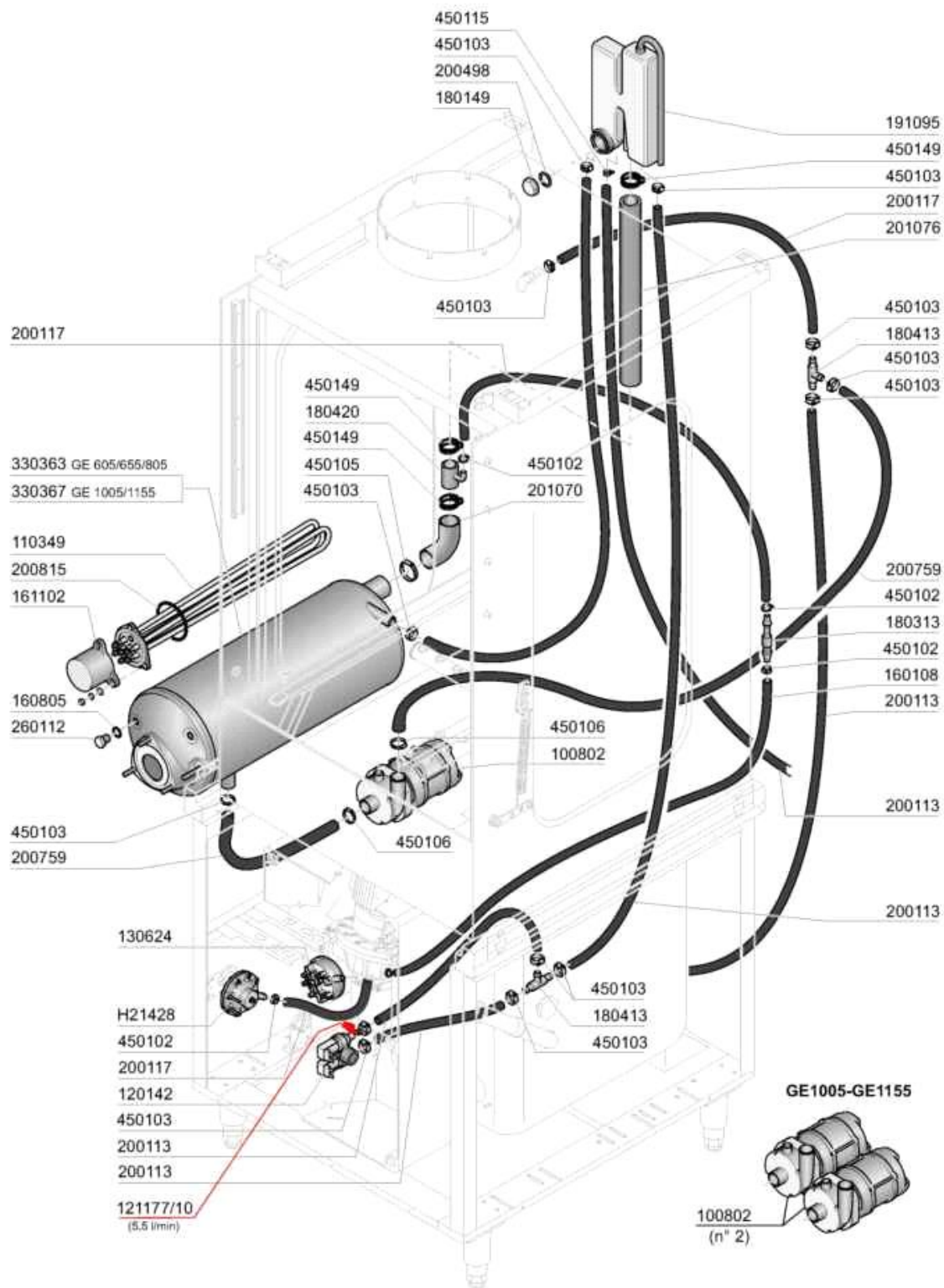
Tank

Code	Description	Price (EUR)
110362	HEAT.ELEMENT 9000W 220/380V	133.50
130634	PRESSURE SWITCH 110-30	31.50
130635	PRESSURE SWITCH 190-40	31.50
160201	ELBOW F.TANK INLET MOPLN	2.80
161102	ELEMENT COVER MOPL. H50 (HIGH)	5.00
161308	AIR CHAMBER C95-155	0.00
161310	AIR CHAMBER FOR GLASSWASHERS B	0.00
161312	HOSE FOR PRESSURE SWITCH C95-1	0.00
180102	DRAIN PIPE NUT 1"1/2 F45-55	4.05
200410	DRAIN OUTL.WASH.1 1/2"65X47X2	7.50
200469	STAND PIPE O RING 45X35,5X7	3.85
200815	O-RING F. HEAT. ELEM.	2.00
200927	GASKET FOR AIR TRAP	1.40
270121	NUT FOR AIR TRAP	8.00
270409	DRAIN OUTLET AC-ACR	81.00
324038	CROSS PART F.FILTER SUPP.	0.00
332057	GE100 TANK FILTER	172.50
332058	DRAW FILTER GE100	201.50
332061	CENTRAL FILTER GE115	201.00
332075	TANK FILTER GE65-115	213.00
332351	CENTRAL FILTER SUPPORT GE115	0.00
332375	FILTER SUPPORT GE65-115	14.00
332386	LEFT FILTER SUPPORT GE65	47.50
380836	OVERFLOW PIPE MM.415	80.50
380848	OVERFLOW PIPE GE65-115	92.00
450134	ELASTIC HOSE CLIP D.9,3/8,8	0.20
450143	CLAMP D.39,7 X 37,7	2.40



Wash pump

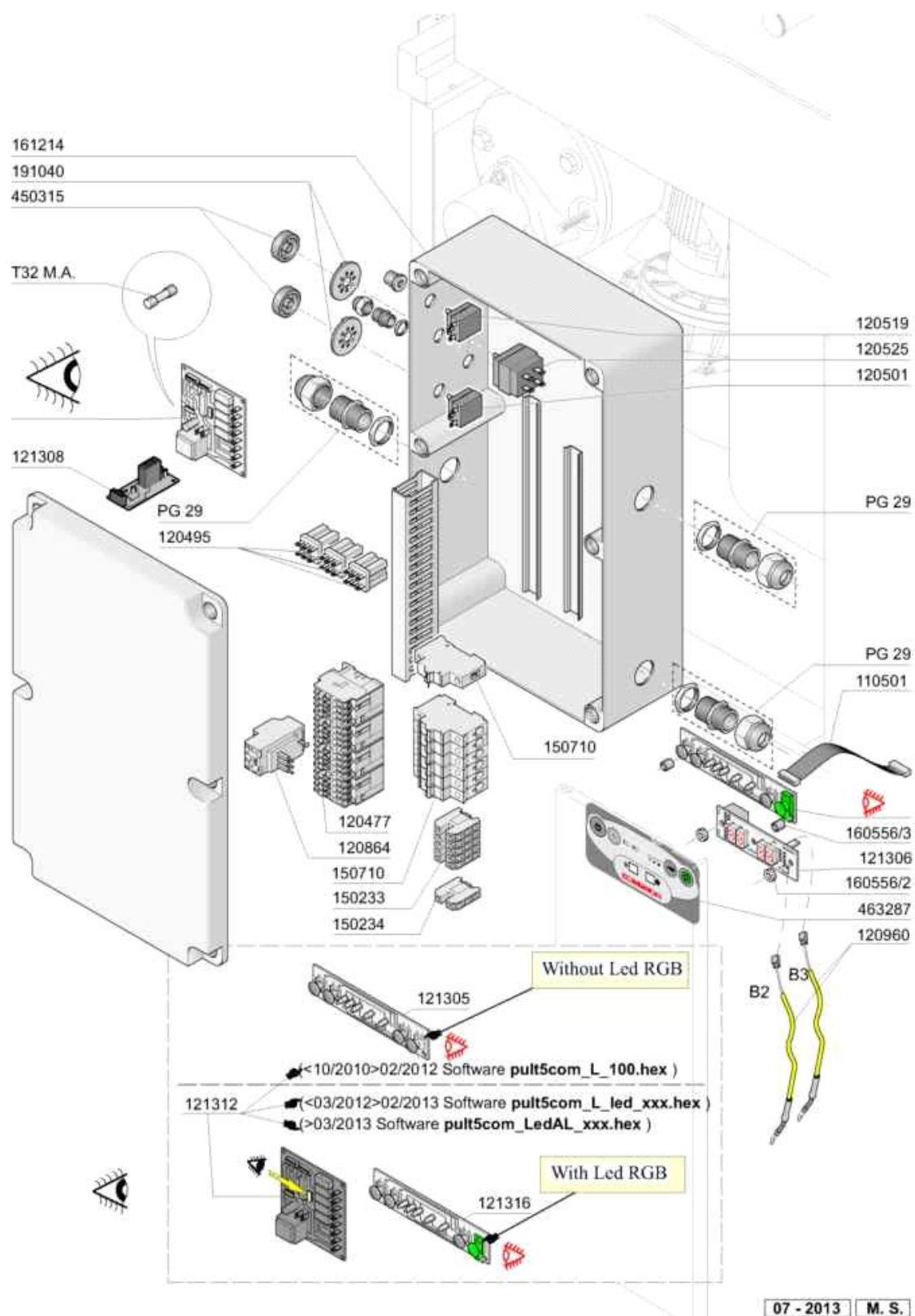
Code	Description	Price (EUR)
100901	PUMP 4HP 230-400V/3/50 V.2	683.50
180128	RING NUT 65,4 C140 C85	3.65
180236	PUMP SUCTION FOR AC-ACR-C155	16.50
180816	STRAINER OF INLET PUMP AC-ACR	8.00
200760	SUCTION HOSE FOR ACR	21.50
200906	GASKET D.92X66X2	4.90
201004	OUTLET HOSE AC95-AC135	0.00
201110	PUMP OUTLET HOSE	117.50
331121	FIXING PLATE FOR PUMP ACR	0.00
441131	VIRATION- DAMPING 40X30X8	14.50
450109	CLAMP 50-65	6.50
450119	CLAMP FE ZN. 58-75 H=12,2	7.00



09 - 2015 M. S.

Rinse assembly

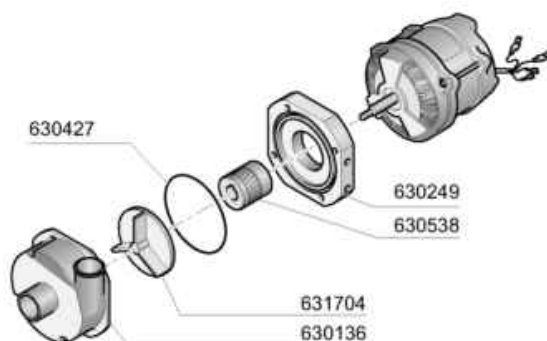
Code	Description	Price (EUR)
100802	PUMP HP 0,3 230V-50HZ	166.00
110349	HEAT.ELEMENT 6000W 230/400V	73.00
120142	SOLENOID VALVE 90°2WAYS 220V	55.00
121177/10	FLOW REGULATOR ORANGE 5,5L/MIN	0.00
130624	PRESSURE SWITCH 110-70	32.50
160108	INJECT.INLET HOSE D.8X5	2.40
160805	GASKET D.8	1.85
161102	ELEMENT COVER MOPL. H50 (HIGH)	5.00
180149	PLASTIC NUT	2.95
180313	TEE-NIPPLE	4.55
180413	TEE NIPPLE D.11,5 - RINSE ASSE	3.05
180420	TEE-NIPPLE	8.00
191095	CONTAINER FOR BREAK TANK	30.00
200113	RUBBER HOSE 12 X 22	15.00
200117	RUBBER HOSE 7X16	17.00
200498	GASKET	2.20
200759	DELIVERY HOSE FOR ECORINSE AC-	23.00
200815	O-RING F. HEAT. ELEM.	2.00
201070	HOSE	12.50
201076	HOSE	31.00
260112	STAINLESS STEEL TE-SCREW 8X16	0.55
330363	BOILER FOR BREAK TANK	128.50
330367	BOOSTER FOR GE65 BT	242.50
450102	CLAMP FE ZN 11-17 H=9	5.00
450103	CLAMP FE ZN. 13-20 H=9	3.10
450105	CLAMP FE ZN. 26-38 H=12,2	5.50
450106	CLAMP FE ZN 32-44 H=12,2	6.00
450115	ELASTIC CLAMP D.8,3/7,8	0.25
450149	CLAMP D.34,6 X 36,4	1.05
H21428	RINSE AID INJECTOR	0.00



Control box

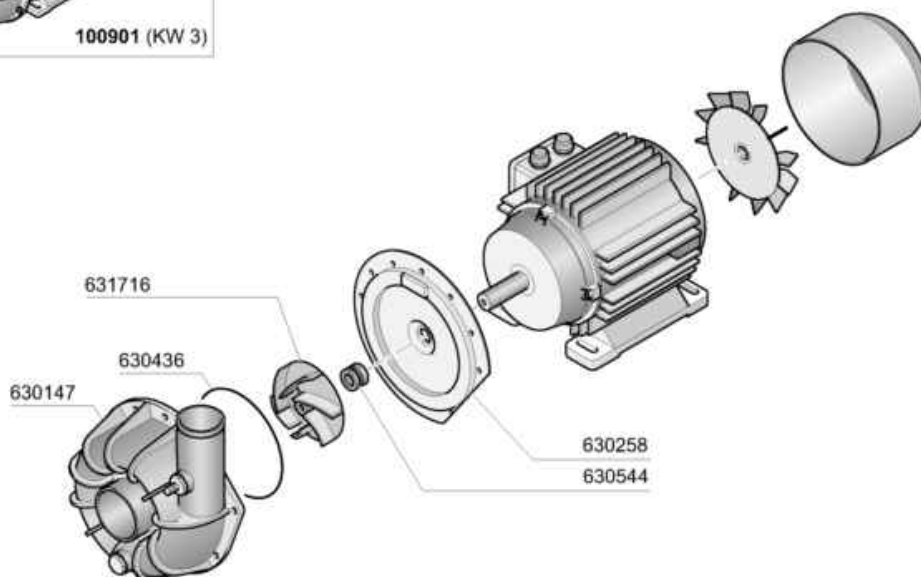
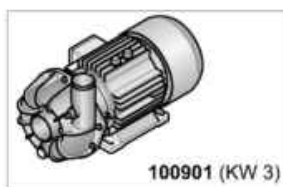
Code	Description	Price (EUR)
110501	CABLE 1000 mm. 10 poli	14.00
120477	CONTACTOR ABB 9A 220V 50/60HZ	0.00
120495	RELAY 16A 220V	33.50
120501	THERMOSTAT 30/90°C	33.50
120519	SAFETY THERMOSTAT 95-125°	61.50
120525	BOOSTER THERMOSTAT 2 TEMPERAT.	56.50
120864	OVERLOAD RELAY ABB 4,5-6,5A	0.00
120960	PROBE C-G	30.00
121305	CONTROL PCB	29.00
121306	PCB DISPLAY	46.50
121308	PCB	18.00
121312	PCB GE 2010	92.00
121316	PCB	44.50
150233	TERMINAL BLOCK	0.00
150234	TERMINAL BLOCK	0.00
150710	FUSE CARRIER 10,3X38 ART.21401	24.50
160556/2	SPACER FLIGHT	0.00
160556/3	SPACER FLIGHT D.4,3 X L.11,1	0.50
161214	BOX IP56 GEWISS GW44211	0.00
191040	FRAME F.THERMOSTAT KNOB	2.00
450315	KNOB F. THERMOSTAT 90°	0.65
463287	PLATE GE	47.50

Risciacquo - Rinse - Rincage - Nachspülpumpe - Aclarado



GE 605 /805/1005

Lavaggio - Wash - Lavage - Waschpumpe - Lavado



GE 605 /805/1005

05 - 2013 M. S.

Pump

Code	Description	Price (EUR)
100802	PUMP HP 0,3 230V-50HZ	166.00
100901	PUMP 4HP 230-400V/3/50 V.2	683.50
630136	PUMP VOLUTE LGB ZF131DX	15.00
630147	PUMP VOLUTE	21.00
630249	PUMP FLANGE ZF131 DX	18.50
630258	PUMP FLANGE	24.00
630427	O-RING FOR PUMP ZF131DX	1.45
630436	PUMP JOINT	21.50
630538	SEAL LGBZF131DX	33.00
630544	PUMP SEAL	27.50
631704	PUMP IMPELLER ZF131DX	43.50
631716	PUMP IMPELLER	27.50