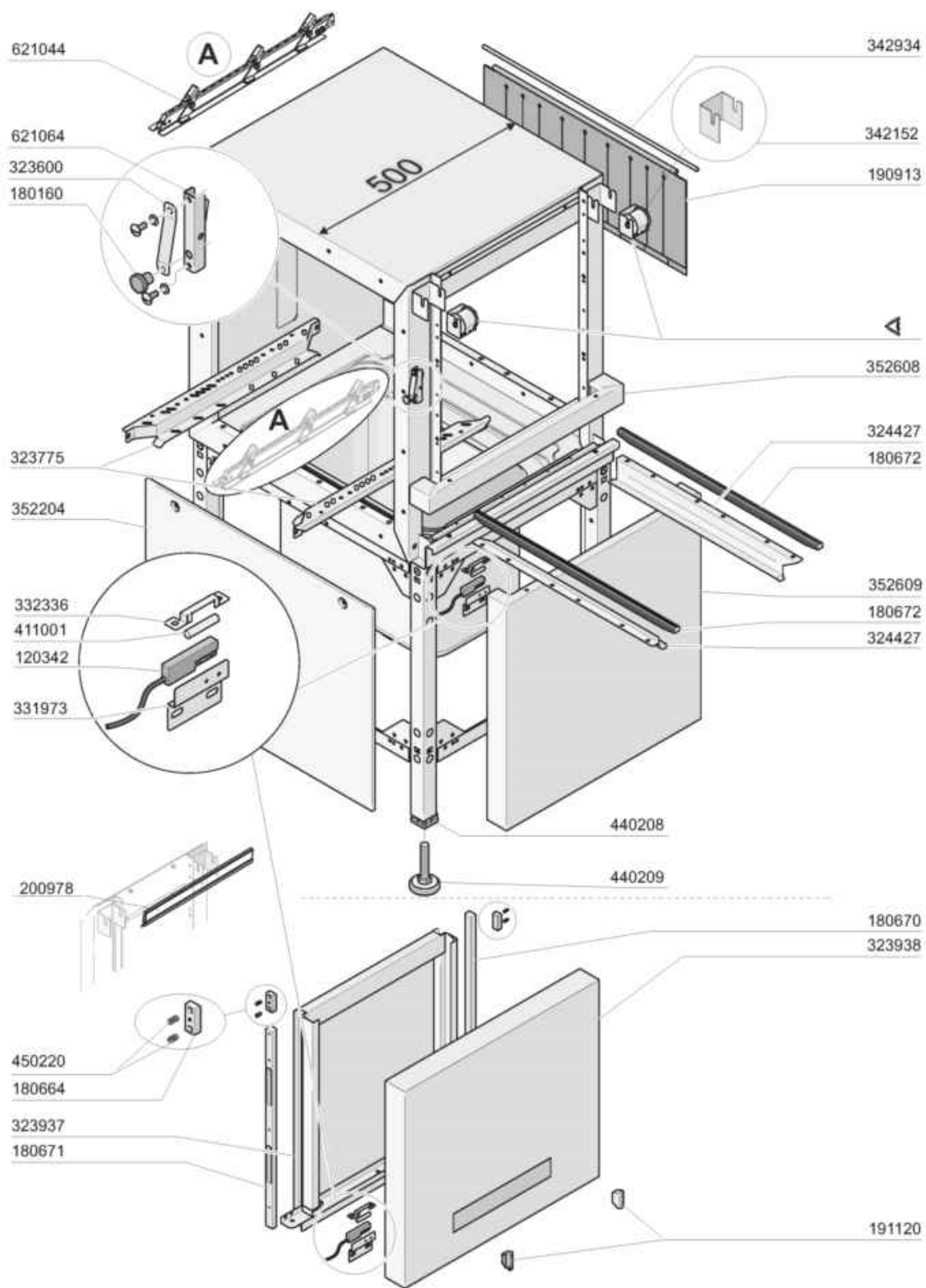
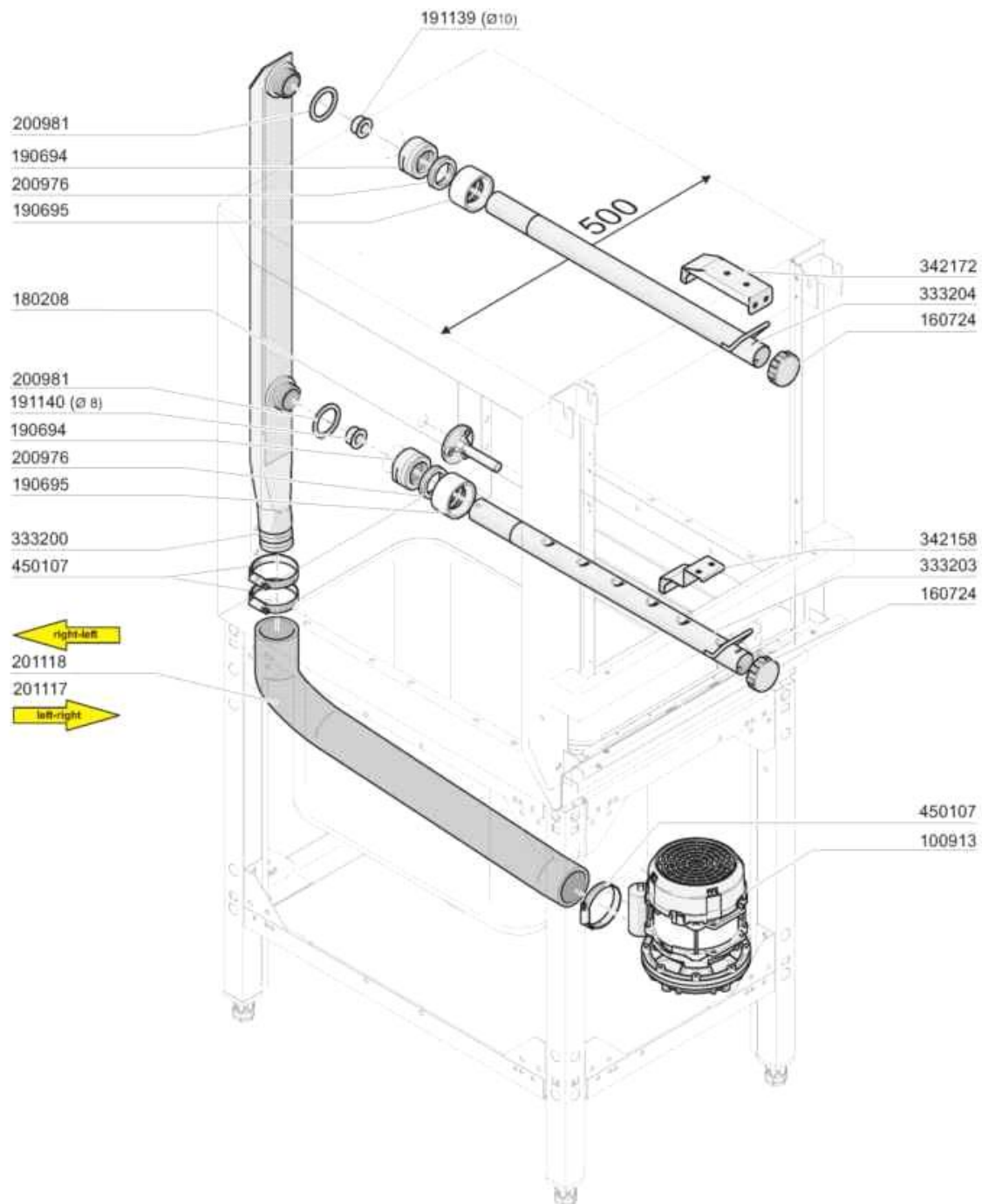


-
- 1 Carrozzeria Prelavaggio 500mm
 - 2 Colonna Prelavaggio 500mm
 - 3 Vasca Prelavaggio 500mm
 - 4 Carrozzeria angolo
 - 5 Vasca angolo
 - 6 Traino angolo
 - 7 Lavaggio angolo
 - 8 Risciacquo RCD
 - 9 Economizzatore
 - 10 Carrozzeria Ecorinse 400mm
 - 11 Vasca Ecorinse 400mm
 - 12 Colonna Ecorinse 400mm
 - 13 Cassetta elettrica
 - 14 Molle-Termostati
 - 15 Accessori
 - 16 Ricambi pompe
 - 17 Pompe
 - 18 Capot 200mm
 - 19 Contalitri/HPS EASY
 - 20 HPS EASY PLUS
 - 21 Elettrovalvole
 - 22 Autolavaggio
 - 23 Asciugatura 600
 - 24 Asciugatura su curva
 - 25 ARC
 - 26 Recupero calore
 - 27 Recupero Calore
 - 28 Pompa Scarico



08 - 2015 M. S.

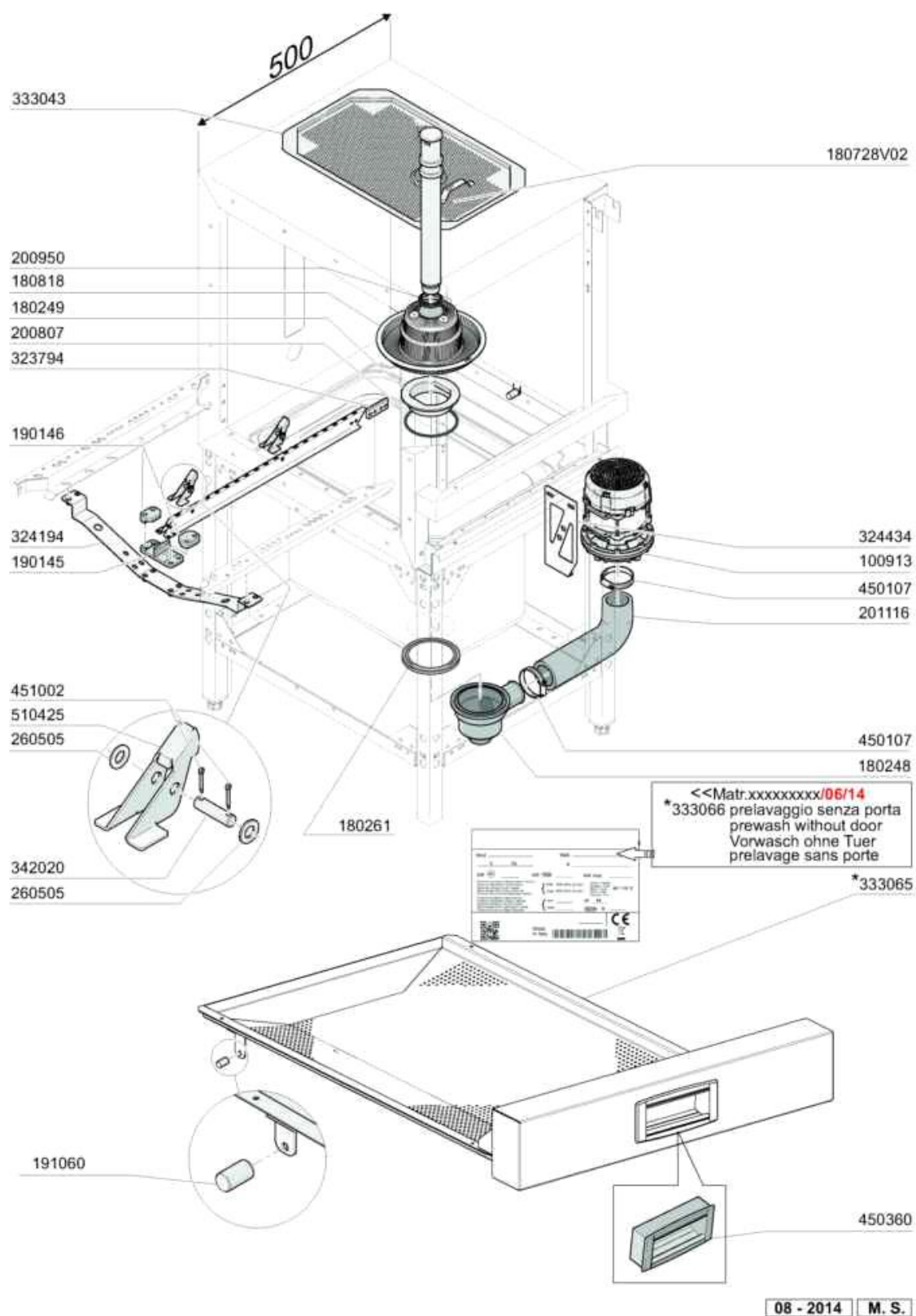
Codice	Descrizione
120342	CONTATTO PROSS.PORTE 0.3M FAST
180160	MANOPOLA ZIGR.EKK.18 B-M4-C1
180664	FRENO X GUIDE PORTA AC2
180670	GUIDA DX PORTA ACD-500
180671	GUIDA SX PORTA ACD-500 C.FERMI
180672	GUIDA CASSETTO ACD500-SCRAP
190913	TENDINA ECOR.SE/1-620X270
191120	TERMINALE MANIGLIA
200978	GUARN.RAS.OLIO INOX 008/11110
323600	PIASTRINA MOLLA SBLOCCO PORTA
323775	GUIDA CESTELLI CAPOT 500 AC2P
323937	PORTA CAPOT AC2-500P5
323938	PANN.PORTA CAPOT 500 MAN.INC.
324427	GUIDA X CASSETTO SU SPONDA
331973	SQUADRETTA MICRO PORTA BTM
332336	SQUADRET.PORTA MAGNETE-BTM/NE2
342152	SUPPORTO MOLLE PORTA AC2
342934	ALBERO TENDINA AC2-AC3
352204	PANN.LAT.AC2
352608	PANN.FORNT.INTERM.AC2-500PD
352609	PANN.FRONT.INF.AC2-500P CASS.
411001	MAGNETE PERM.8X40 SE/1
440208	BLOCCHETTO X PIEDE
440209	PIEDE PER NE
450220	MOLLA SCROCCHETTO BR/BC
621044	ASS.GUIDA SALT.AC2-500P
621064	ASSIEME FERMO PORTA AC2.....



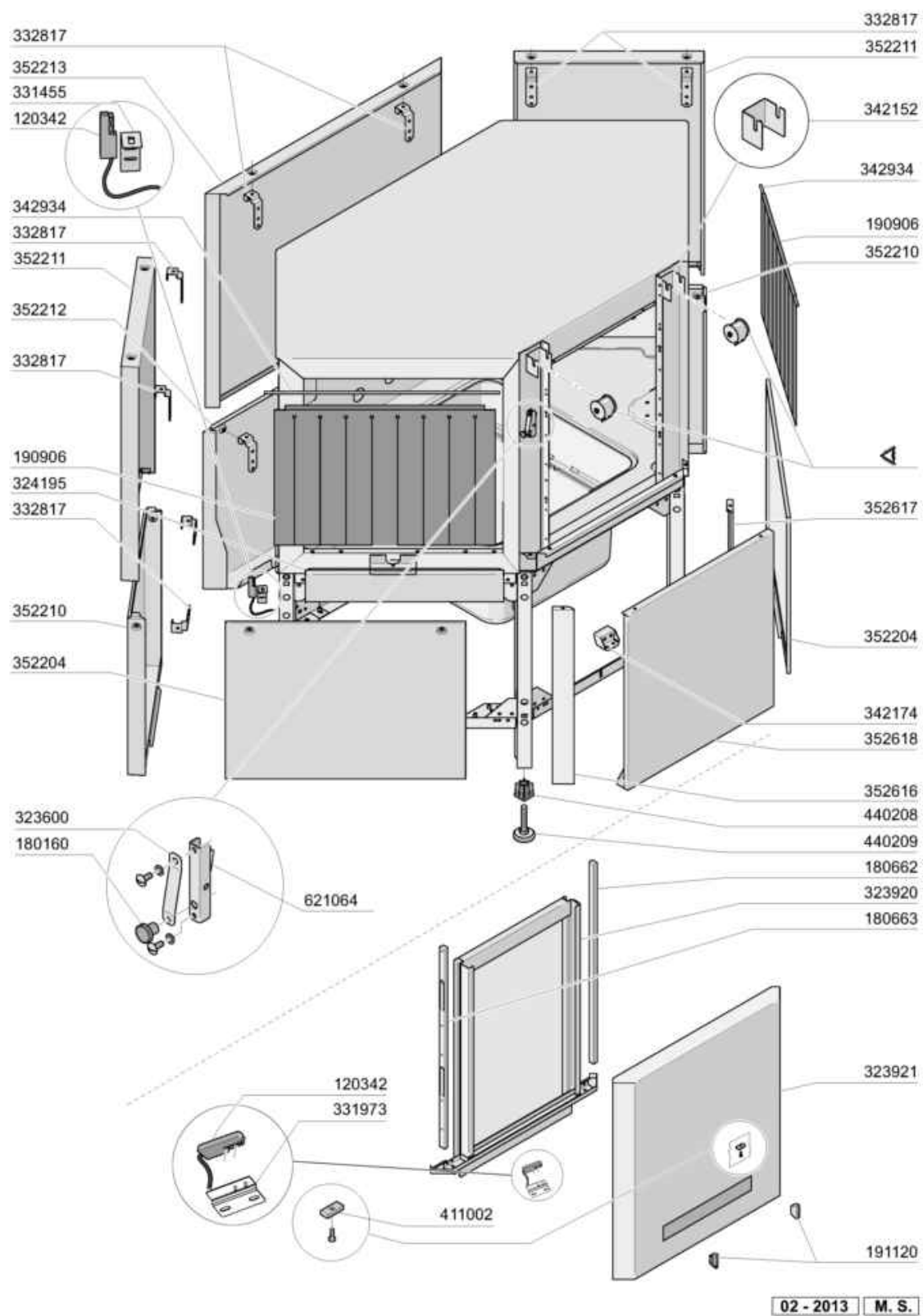
10 - 2014 M. S.

Colonna Prelavaggio 500mm

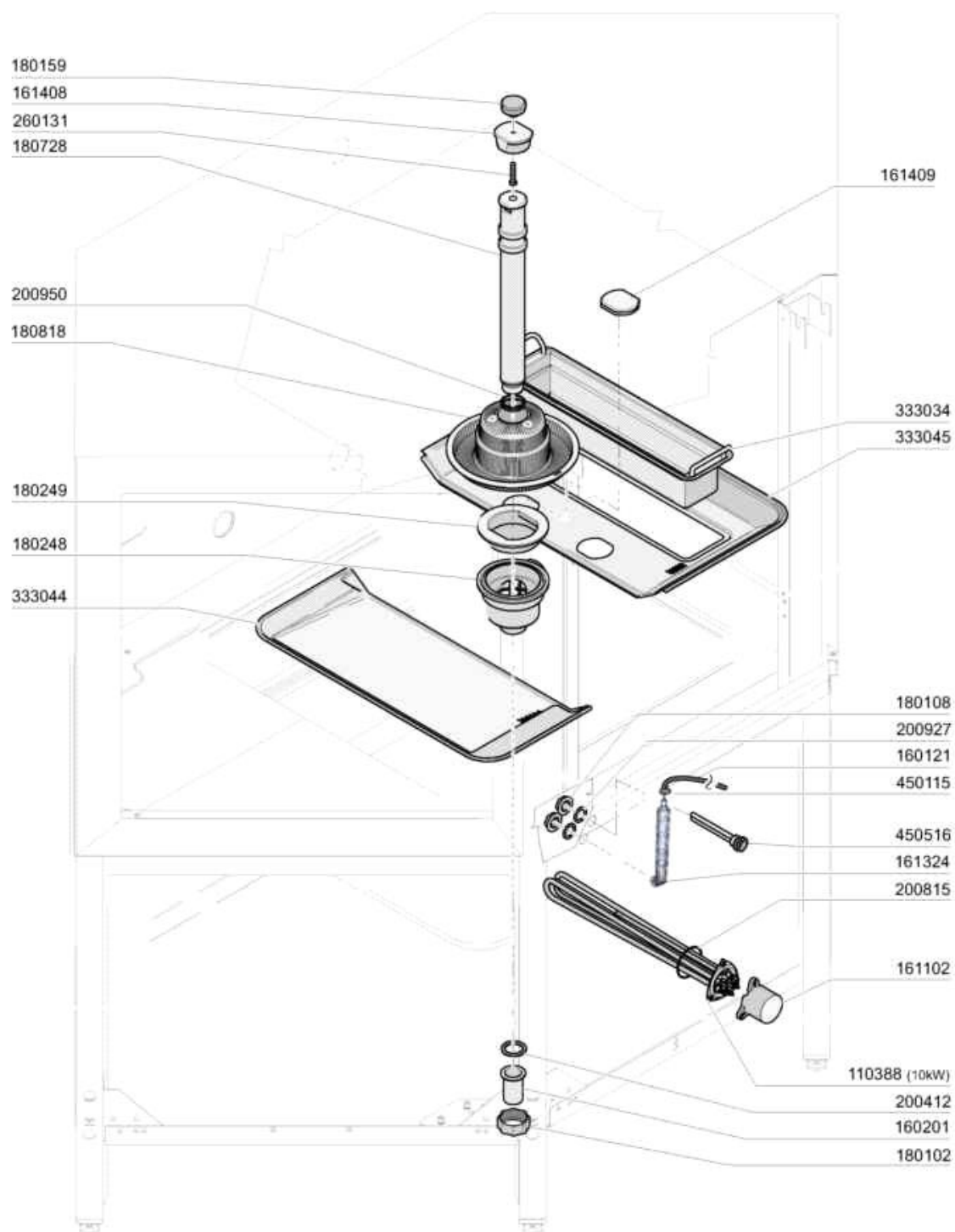
Codice	Descrizione
100913	POMPA 0.99kW ZF210V 230V/1/50
160724	TAPPO BRACCIO LAV.S90-S NUOV.L
180208	FLANGIA PER REED S90 S
190694	BUSSOLA 1"1/4 AGG.COLLETTORE
190695	BUSSOLA 1"3/4 INS.COLLETTORE
191139	BUSSOLA RIDUZIONE D.10
200976	GUARN.A LABBRO DI137 SILICONE
200981	GUARN.PIANA D.54X41 SP.3
201117	TUBO MAND.POMPA AC2-500P SD
201118	TUBO MAND.POMPA AC2-500P DS
333200	COLONNA LAVAGGIO AC2
333203	COLLETT.LAV.INF.AC2P
333204	COLLETT.LAV.SUP.AC2P
342158	SUPP.ANT.COLLETT.LAV.INF.AC2P
342172	SUPP.ANT.COL.LAV.SUP.AC2-500P5
450107	FASCETTA FE ZN.38-50 H=12,2



Codice	Descrizione
100913	POMPA 0.99kW ZF210V 230V/1/50
180248	VASC.ASP.POMPA E SCAR. C 2001
180249	GHIERA FISS.VASCHETTA(180248)
180261	PROLUNGA X VASCH.ASP.POMPA
180728V02	TROPPOP.180728 LAVORATO P5/P9
180818	FILTRO ASPIRAZIONE FC/LC 2001
190145	SUPPORTO GUIDA PORTASAL.AC-ACR
190146	FERMO PER SUPPORTO GUIDA AC
191060	PERNO SOSTEGNO FILTRO ECORINSE
200807	GUARNIZIONE OR 109X4 NBR70
200950	GUARNIZ.A LABBRO VITON DE175
201116	TUBO ASP.POMPA AC2-500P/P5
260505	RONDEL.PIANE D8 INOX UNI 6592
323794	BLOCCH.COLLEG.GUIDE SALT.45?
324194	TRAV.SUPP.GUIDA SALT.AC2
324434	PIASTRA SOST.POMPA ACD-500S
333043	FILTRO VASCA CAPOT 500-600
342020	PERNO GUIDE SALT.INOX AC 120
450107	FASCETTA FE ZN.38-50 H=12,2
450360	MANIGLIA ELESA ERB.130-C1
451002	COPPIGLIE INOX D.2X12 UNI 1336
510425	SALTARELLO INOX AC/ACR

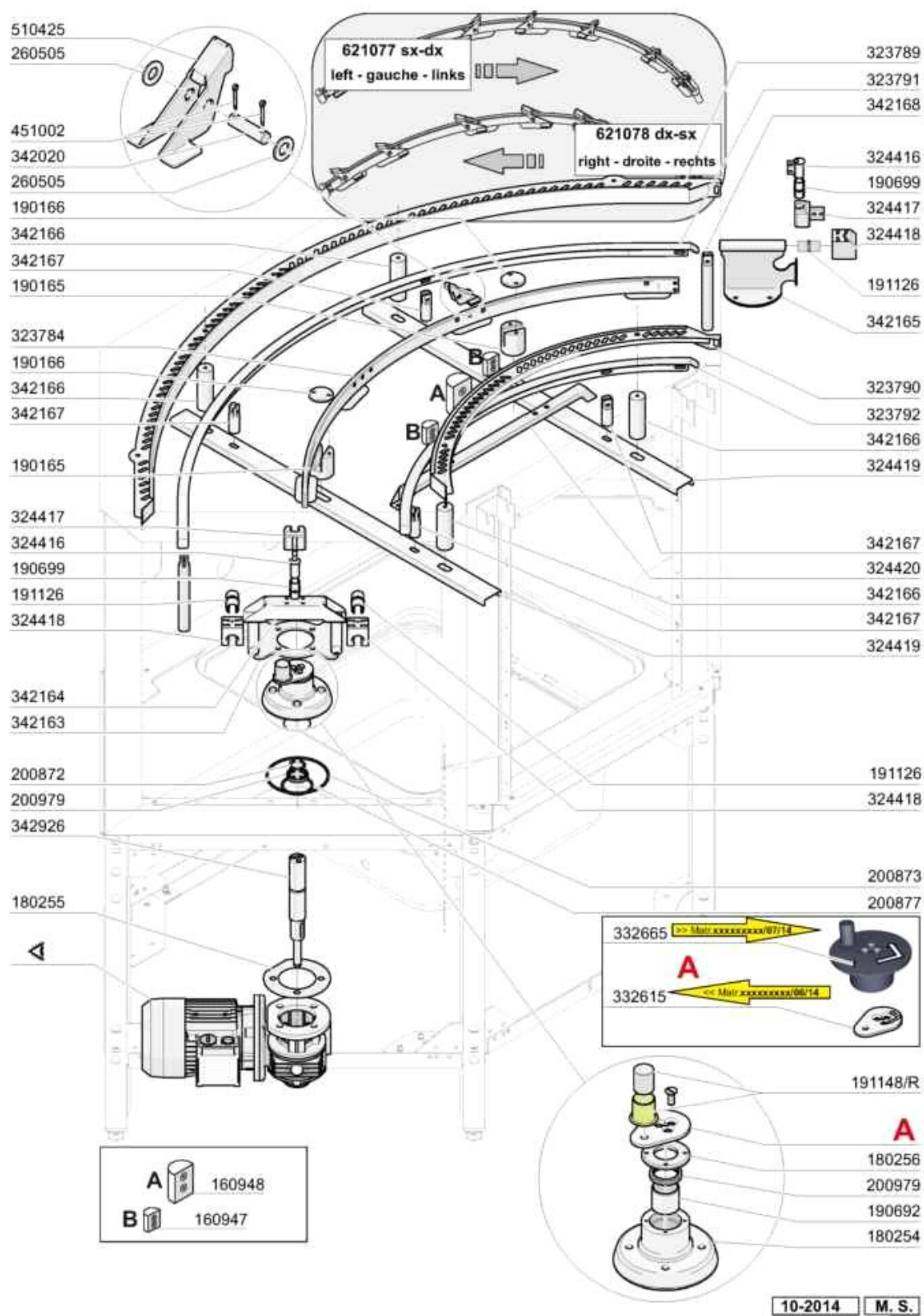


Codice	Descrizione
120342	CONTATTO PROSS.PORTE 0.3M FAST
180160	MANOPOLA ZIGR.EKK.18 B-M4-C1
180662	GUIDA DX PORTA AC2
180663	GUIDA SX PORTA AC2 CON FERMI
190906	TENDINA ENT-USC.AC/ACR 620X480
191120	TERMINALE MANIGLIA
323600	PIASTRINA MOLLA SBLOCCO PORTA
323920	PORTA CAPOT 600/900 ANG.
323921	PANN.PORTA CAPOT ANG. MAN.INC.
324195	BALCONCINO LAV AC2
331455	SQUADRETTA PORTA MICRO SE SE/1
331973	SQUADRETTA MICRO PORTA BTM
332817	SQ.2 FISSAGGI X PANN.POST.AC2P
342152	SUPPORTO MOLLE PORTA AC2
342174	SUPPORTO INF.IMP.EL.AC2
342934	ALBERO TENDINA AC2-AC3
352204	PANN.LAT.AC2
352210	PANN.POST.LAT.INF.AC2A'12
352211	PANN.POST.LAT.SUP.AC2A'12
352212	PANN.POST.INF.AC2A'12
352213	PANN.POST.SUP.AC2A'12
352616	PANN.FRONT.SX AC2A'12
352617	PANN.FRONT.DX AC2A'12
352618	PANN.FRONT.CAPOT ANG.AC2E-AC3
411002	MAGNETE PERMANENTE 24X12 SE/1
440208	BLOCCHETTO X PIEDE
440209	PIEDE PER NE
621064	ASSIEME FERMO PORTA AC2.....

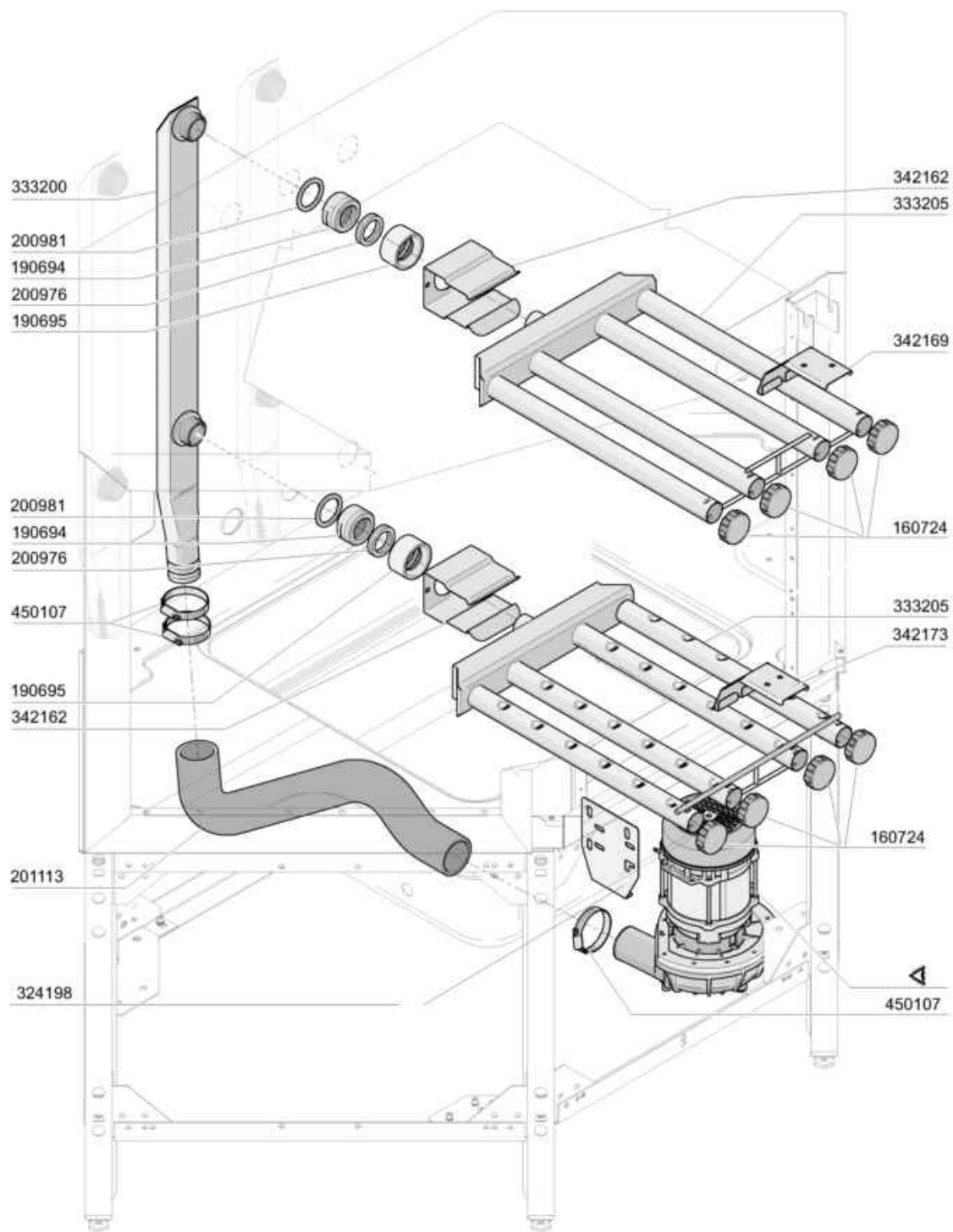


11 - 2014 M. S.

Codice	Descrizione
110388	RES.FL.10000W.230/400V
160121	TUBO GOMMA NERA 5 X 9
160201	CODOLO DIR.SCARICO VASCA
161102	COPRIRESISTENZA H 50(ALTO)
161324	TRAPPOLA ARIA MEDIA ANNO 2013
161408	TAPPO X TROPPOPIENO CON MANIGL
161409	TAPPO X FILTRO CON CASSETTO
180102	GHIERA 1"1/2 PILETTA F-C75
180108	GHIERA 1/2" PLASTICA
180159	VOLANT.LOBI ELK.45 B-M6-C6
180248	VASC.ASP.POMPA E SCAR. C 2001
180249	GHIERA FISS.VASCHETTA(180248)
180728	TROPPOPIENO C VASCA SEDIA 2001
180818	FILTRO ASPIRAZIONE FC/LC 2001
200412	GUARNIZ.CODULO 45X33X3
200815	GUARN.OR 6X56X68
200927	GUARNIZ.TRAPP.PRESS.C95-155
200950	GUARNIZ.A LABBRO VITON DE175
260131	VITE TE 6X45 INOX A2 UNI 5739
333034	FILTRO CASSETTO 425X75 H90
333044	FILTRO A SCIVOLO CON MANIGLIE
333045	FILTRO CON CASS.CON MANIGLIE
450115	FASCETTA A DUE FILI D.8,3/7,8
450516	GUAINA THERMOST.INOX 2 TUBI

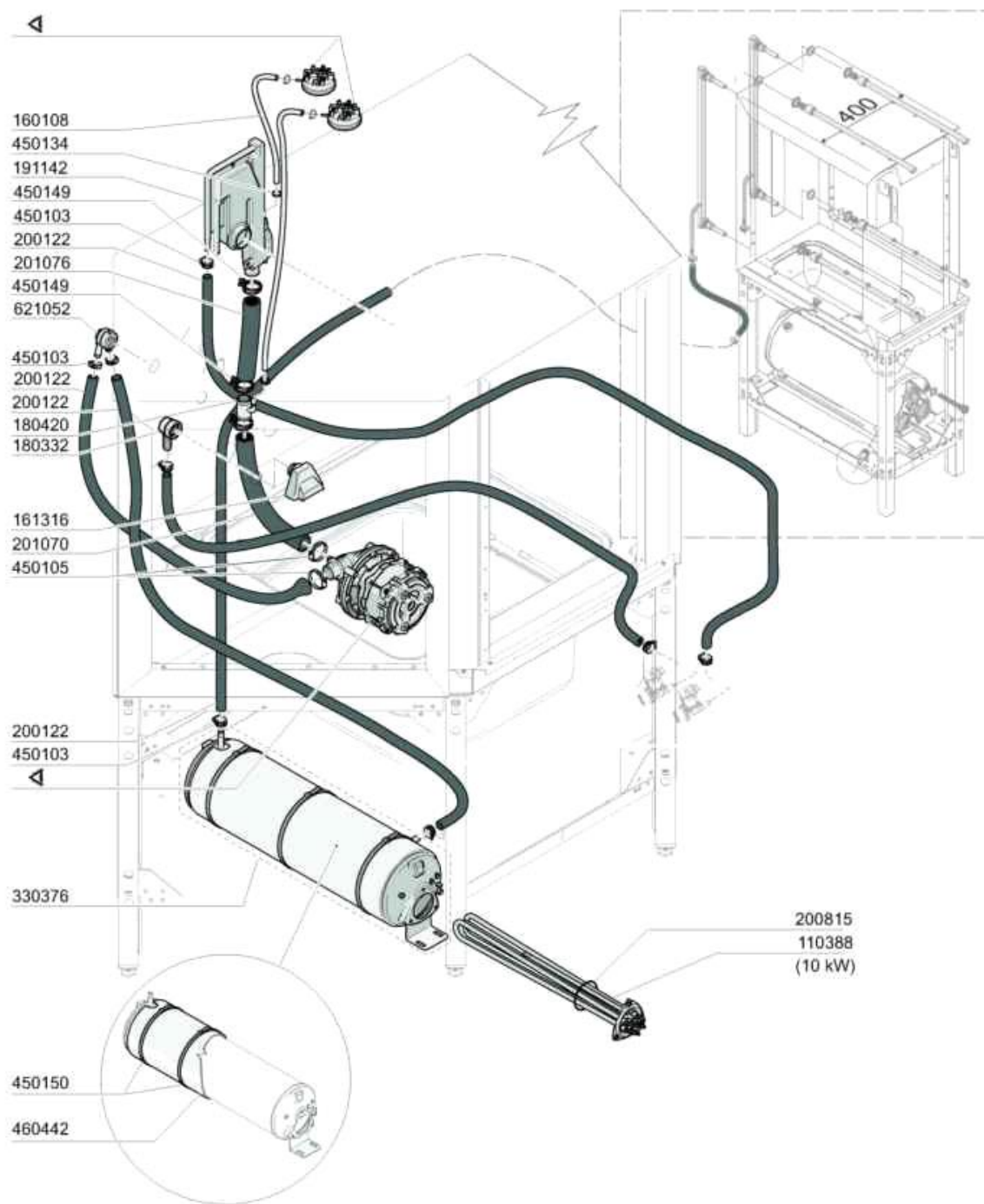


Codice	Descrizione
160947	BLOCCH.LAT.GUIDA CEST.MOD.ANG.
160948	BLOCCH.CEN.GUIDA CEST.MOD.ANG.
180254	FLANGIA X ALBERO TRAINO AC2
180255	CONTROFLANGIA X RID.TRAINO AC2
180256	COPERCHIO X FLANGIA ALB.TRAINO
190165	SUPP.X GUIDA SALTARELLI AC2A
190166	SUPP.SUP.X GUIDA SALT. AC2A
190692	BUSSOLA IGUS H370SM-3034-30
190699	BUSSOLA SCORRIMENTO JUMO-01-16
191126	BUSSOLA SCORRIMENTO JUMO-01-20
191148/R	KIT BUSSOLA TRAINO AC2
200872	OR 23 X 3.60 (D.INT X TORO)
200873	ANELLO OR 110,72X117,78X3,53
200877	GUARN.OR 156 DI52.39 T3.53 NBR
200979	GUARN.ANGUS AS-30-40-7
260505	RONDEL.PIANE D8 INOX UNI 6592
323784	GUIDA SALT.MODULO ANGOLO AC2/3
323789	GUIDA EST.SCRR.CEST.ACD AC2A
323790	GUIDA INT.SCRR.CEST.ACD AC2A
323791	GUIDA EST.SUPP.CEST.ACD AC2A
323792	GUIDA INT.SUPP.CEST.ACD AC2A
324416	BLOCCH.TERMINALE GUIDA SALT.
324417	BLOCCH.SNODO GUIDA SALT COLLEG
324418	BLOCCH.SUPP.SCRR.GUIDA SALT.
324419	TRAV.SUPP.GUIDE.ACD AC2A
324420	TRAV.SUPP.BRACCIO LAV.ANT.AC2A
332615	FLANGIA ECC.ALBERO TRAINO AC2
332665	FLANGIA ECC.PROT.ALBERO TRAINO
342020	PERNO GUIDE SALT.INOX AC 120
342163	SUPP.A GUIDE X GUIDA SALT.AC2A
342164	SUPP.CUSC.COM.GUIDA SALT.AC2A
342165	SUPP.A GUIDA X GUIDA SALT.AC2A
342166	SUPP.X GUIDA SCRR.CESTELLI
342167	SUPP.X GUIDA SUPPORTO CESTELLI
342168	SUPP.LAT.X GUIDA SUPP.CESTELLI
342926	ALBERO COMANDO TRAINO LAV AC2
451002	COPPIGLIE INOX D.2X12 UNI 1336
510425	SALTARELLO INOX AC/ACR
621077	ASS.GUIDA SALT.MODULO ANG. S-D
621078	ASS.GUIDA SALT.MODULO ANG. D-S



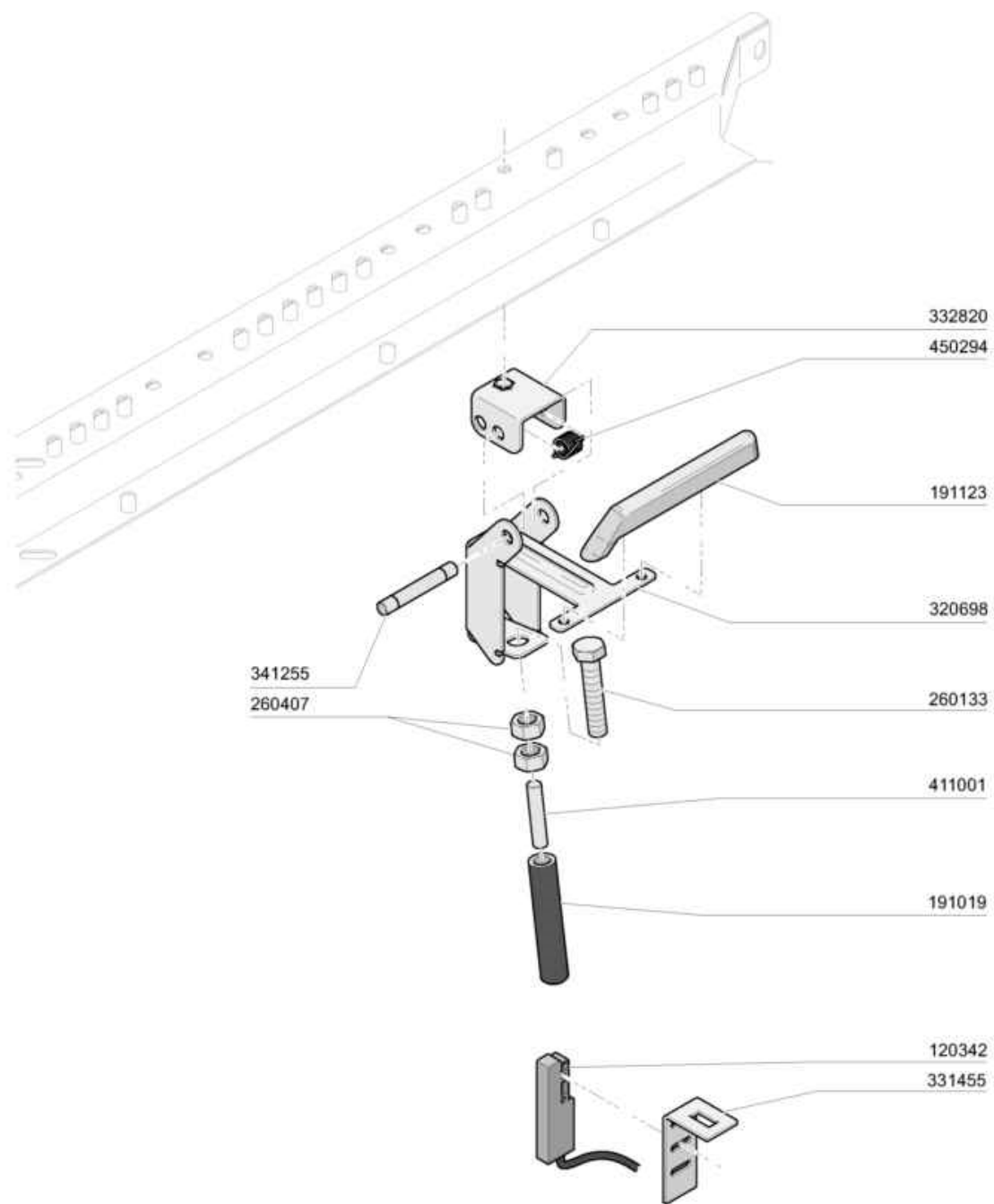
03 - 2013 M. S.

Codice	Descrizione
160724	TAPPO BRACCIO LAV.S90-S NUOV.L
190694	BUSSOLA 1"1/4 AGG.COLLETTORE
190695	BUSSOLA 1"3/4 INS.COLLETTORE
200976	GUARN.A LABBRO DI137 SILICONE
200981	GUARN.PIANA D.54X41 SP.3
201113	TUBO MAND.POMPA LAV AC2
324198	PIASTRA SOST.POMPA AC2-AC2P
333200	COLONNA LAVAGGIO AC2
333205	COLLETT.LAV.4 BRACCI AC2E-AC3
342162	SUPP.BRACCI LAVAGGIO AC2E-AC3
342169	SUPP.ANT.COLLETT.LAV.SUP.AC2A
342173	SUPP.ANT.COLL.LAV.INF.AC2A
450107	FASCETTA FE ZN.38-50 H=12,2



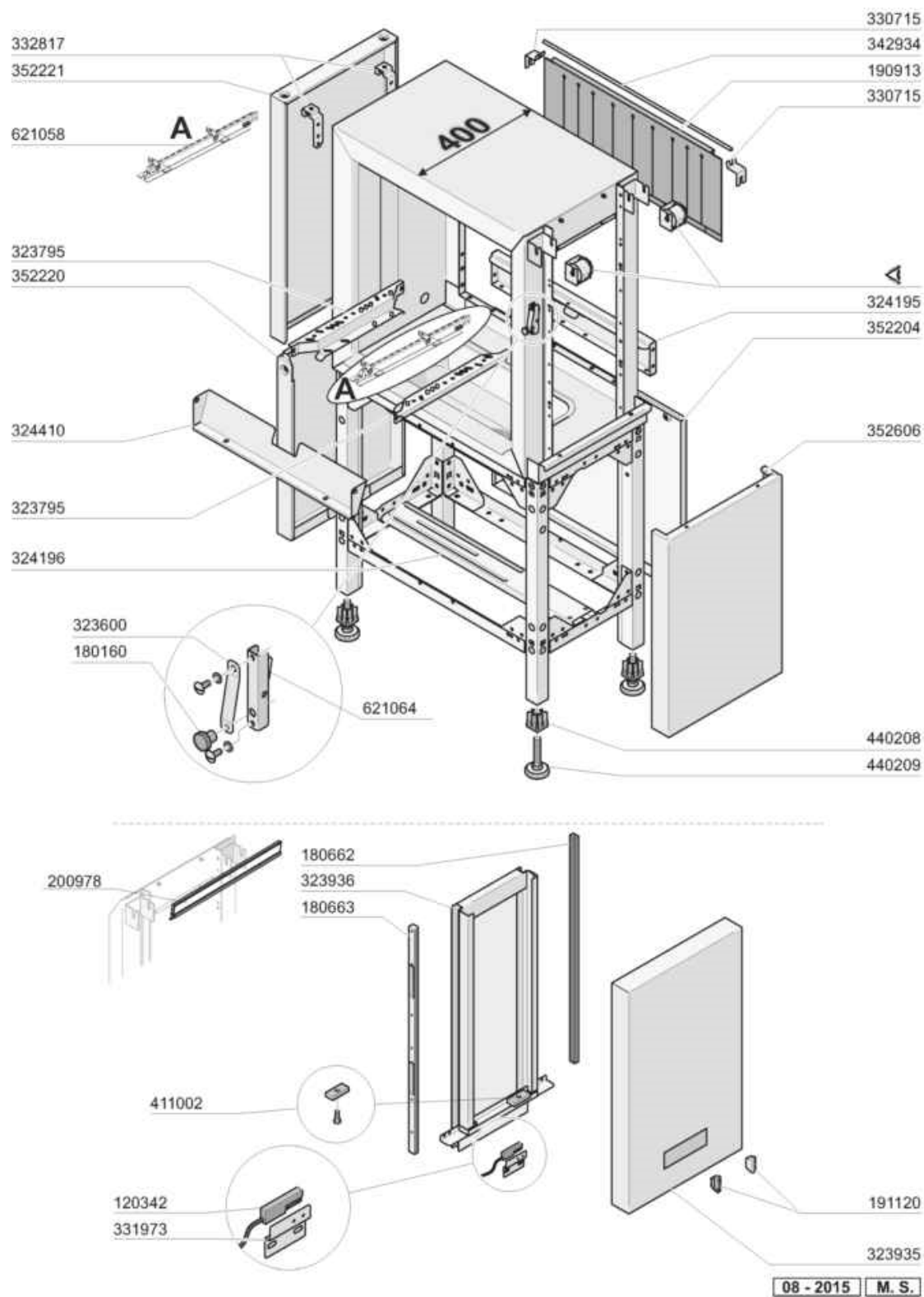
04/2013 M. S.

Codice	Descrizione
110388	RES.FL.10000W.230/400V
160108	TUBO FL.CRIST D.8X5 PVC
161316	TRAPPOLA ARIA PRESS.TO BHC
180332	PORTAG.CURVO 3/4"X12 A GHIERA
180420	TEE x BREAK TANK (H180420)
191142	BREAK TANK SERIE AC2-AC3
200122	TUBO GOMMA 11X19 CASER/15 BLU
200815	GUARN.OR 6X56X68
201070	TUBO BOILER-TEE BT (HV36028)
201076	TUBO COLLEGAMENTO BT-TEE
330376	BOILER D150 1 RES.COIB.AC2-ACD
450103	FASCETTA FE ZN.13-20 H=9
450105	FASCETTA FE ZN.26-38 H=12,2
450134	FASCET. A DUE FILI D.9,3/8,8
450149	FASCETTA A 2 FILI D.34,6x36,4
450150	FASCETTA 820X8.9 MM IN PA66HS
460442	PANN.COIB. PER BOILER 330320
621052	VALVOLA ANTIVUOTO COMP."DVGW"

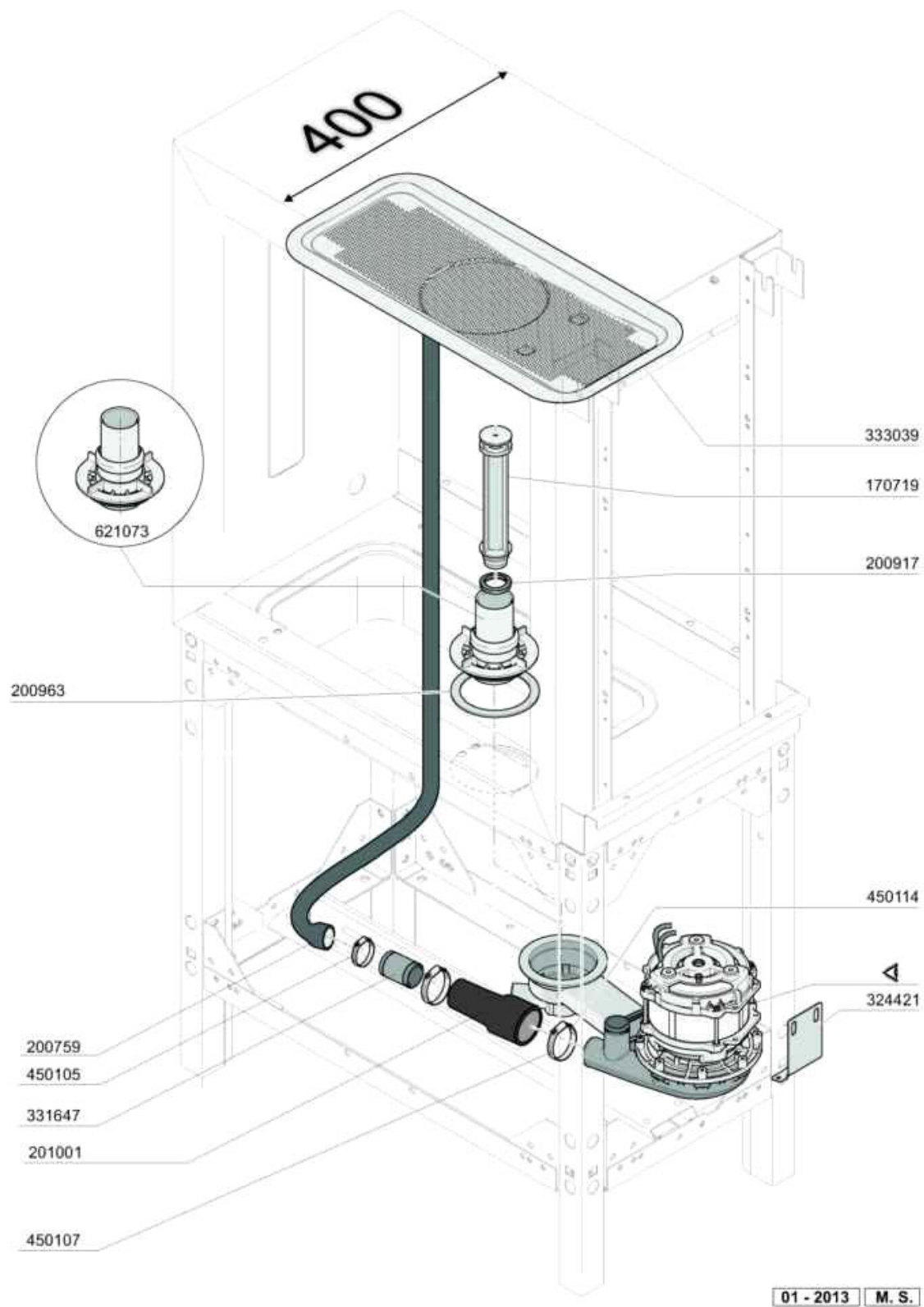


12 - 2012 M. S.

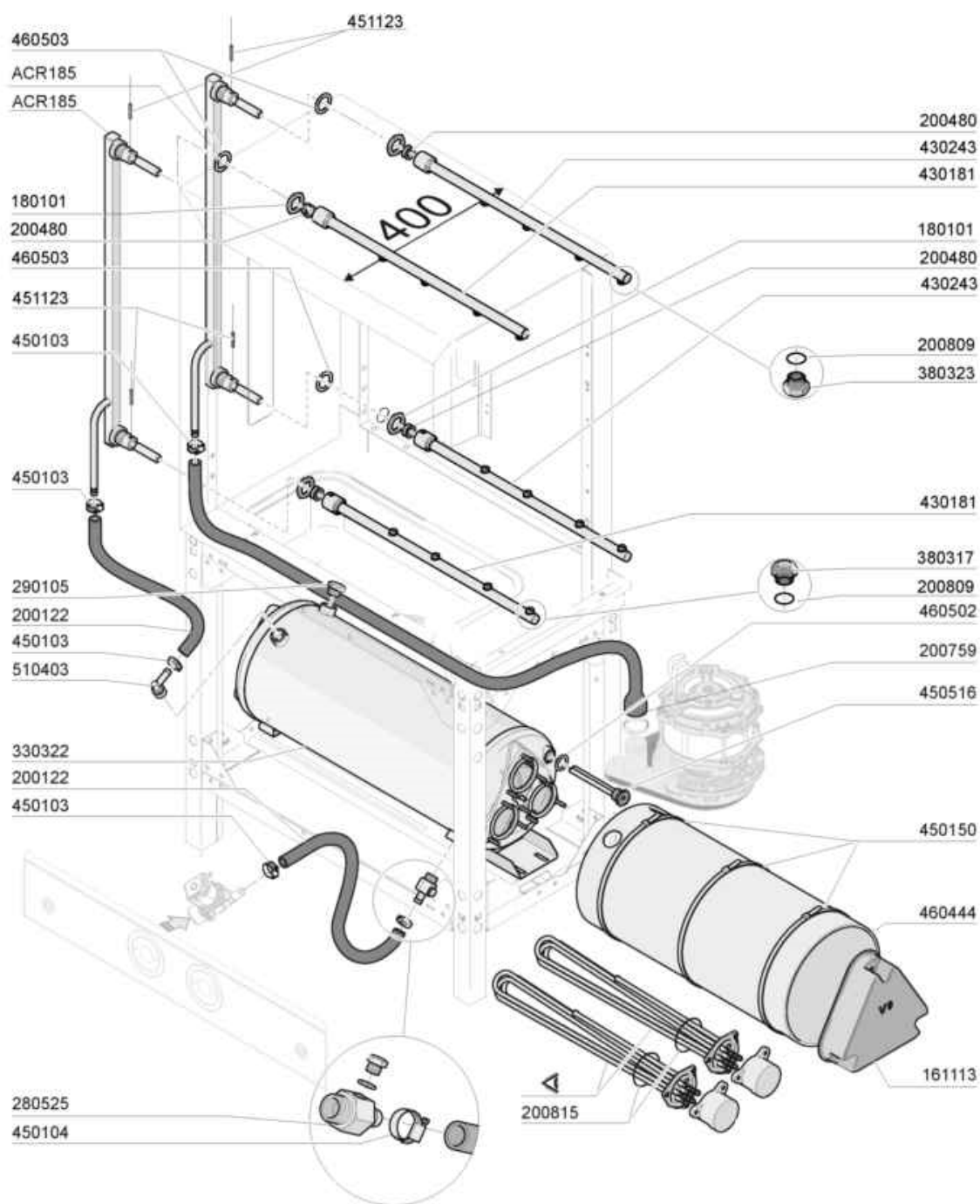
Codice	Descrizione
120342	CONTATTO PROSS.PORTE 0.3M FAST
191019	PERNO MAGNETE AC-ACR POLIPROP.
191123	GUIDA ECONOMIZZATORE AC2
260133	VITE TE 10X55 INOX"A2"UNI 5739
260407	DADI STAMPATI D10 INOX UNI5588
320698	LEVA PER ECONOMIZ.ACR
331455	SQUADRETTA PORTA MICRO SE SE/1
332820	SQ.FISS.ECONOMIZZ.X LAV AC2
341255	PERNO PER ECONOMIZZATORE ACR
411001	MAGNETE PERM.8X40 SE/1
450294	MOLLA A TORS.90° X ECONOM.INOX



Codice	Descrizione
120342	CONTATTO PROSS.PORTE 0.3M FAST
180160	MANOPOLA ZIGR.EKK.18 B-M4-C1
180662	GUIDA DX PORTA AC2
180663	GUIDA SX PORTA AC2 CON FERMI
190913	TENDINA ECOR.SE/1-620X270
191120	TERMINALE MANIGLIA
200978	GUARN.RAS.OLIO INOX 008/11110
323600	PIASTRINA MOLLA SBLOCCO PORTA
323795	GUIDA CESTELLI CAPOT AC2-400E
323935	PANN.PORTA CAPOT 400 MAN.INC.
323936	PORTA CAPOT 400 AC2
324195	BALCONCINO LAV AC2
324196	TRAV.UNIVERSALE SOST.BOILER
324410	SPONDA A SCIVOLO INTERMEDIA
330715	SQUAD. SUP.TEND. AC NE LV BTM
331973	SQUADRETTA MICRO PORTA BTM
332817	SQ.2 FISSAGGI X PANN.POST.AC2P
342934	ALBERO TENDINA AC2-AC3
352204	PANN.LAT.AC2
352220	PANN.POST.INF.AC2-400E
352221	PANN.POST.SUP.AC2-400E
352606	PANN.FRONT.AC2-400E
411002	MAGNETE PERMANENTE 24X12 SE/1
440208	BLOCCHETTO X PIEDE
440209	PIEDE PER NE
621058	ASS.GUIDA SALT.AC2-400E
621064	ASSIEME FERMO PORTA AC2.....

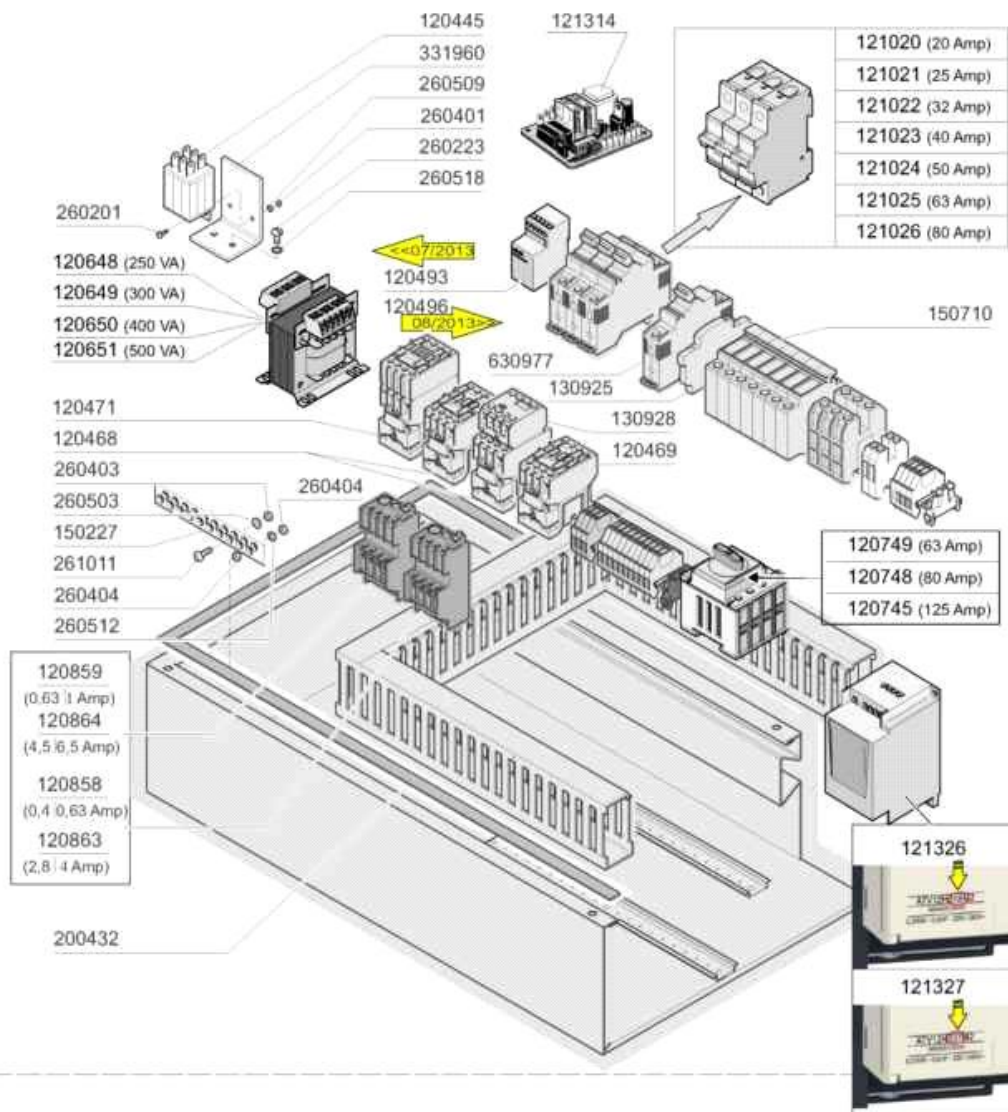


Codice	Descrizione
170719	TROPPOPIENO X ACD900-E Z.S.A.
200759	MANICOTTO PER ECORINS SE/1
200917	GUARN.LABBRO 156-40/27.3-6.35
200963	GUARNIZIONE D.110XD.88XSP.3
201001	TUBO ASP.X POMPA SC. F LAV-LIN
324421	SUPP.POMPA AC2-400E
331647	GIUNZ.TUBO LAV.LF 324 C/ADD.
333039	FILTRO VASCA ECORINSE AC2-400E
450105	FASCETTA FE ZN.26-38 H=12,2
450107	FASCETTA FE ZN.38-50 H=12,2
450114	FASCETTA FE ZN.22-32 H=12,2
621073	ASSIEME GHIERA+PROLUNGA AC2...



04 - 2016 M. S.

Codice	Descrizione
161113	COPRIRESIST.x BOILER 3 RESIST.
180101	CONTRODADO 3/4-AC91-202-B10
200122	TUBO GOMMA 11X19 CASER/15 BLU
200480	GUARNIZ.BRACCI RISC.SE SE/1
200759	MANICOTTO PER ECORINS SE/1
200809	GUARN.OR 1,78X7,66X11,21 VITON
200815	GUARN.OR 6X56X68
280525	RACC.PORTAG.BOILER ACR-NE-NG ?
290105	TAPPO TE 1/2" IN OTT.ESAG."27"
330322	BOILER D.230 NE 3 RESIST.COIB
380317	NEBULIZZ.OV 1/8" 303 125LT.80
380323	NEBULIZZ.INOX OV80-1/8"-37,5L
430181	BRAC.RISCIACQUO (4 UG.380317)
430243	BRAC.RISC.1 AGG.4UG 380323
450103	FASCETTA FE ZN.13-20 H=9
450104	FASCETTA FE ZN.15-24 H=12,5
450150	FASCETTA 820X8.9 MM IN PA66HS
450516	GUAINA TERMOST.INOX 2 TUBI
451123	SPINA ELAST.INOX 4X16 DIN1481
460444	PANN.COIB. PER BOILER 330322
460502	GUARN. 30X21X2 KLINGER
460503	GUARNIZ.38X27X2 (3/4) FASIT OM
510403	PORTAGOMMA 90?1/2"X12
ACR185	COLONNA RISCIACQUO ACE

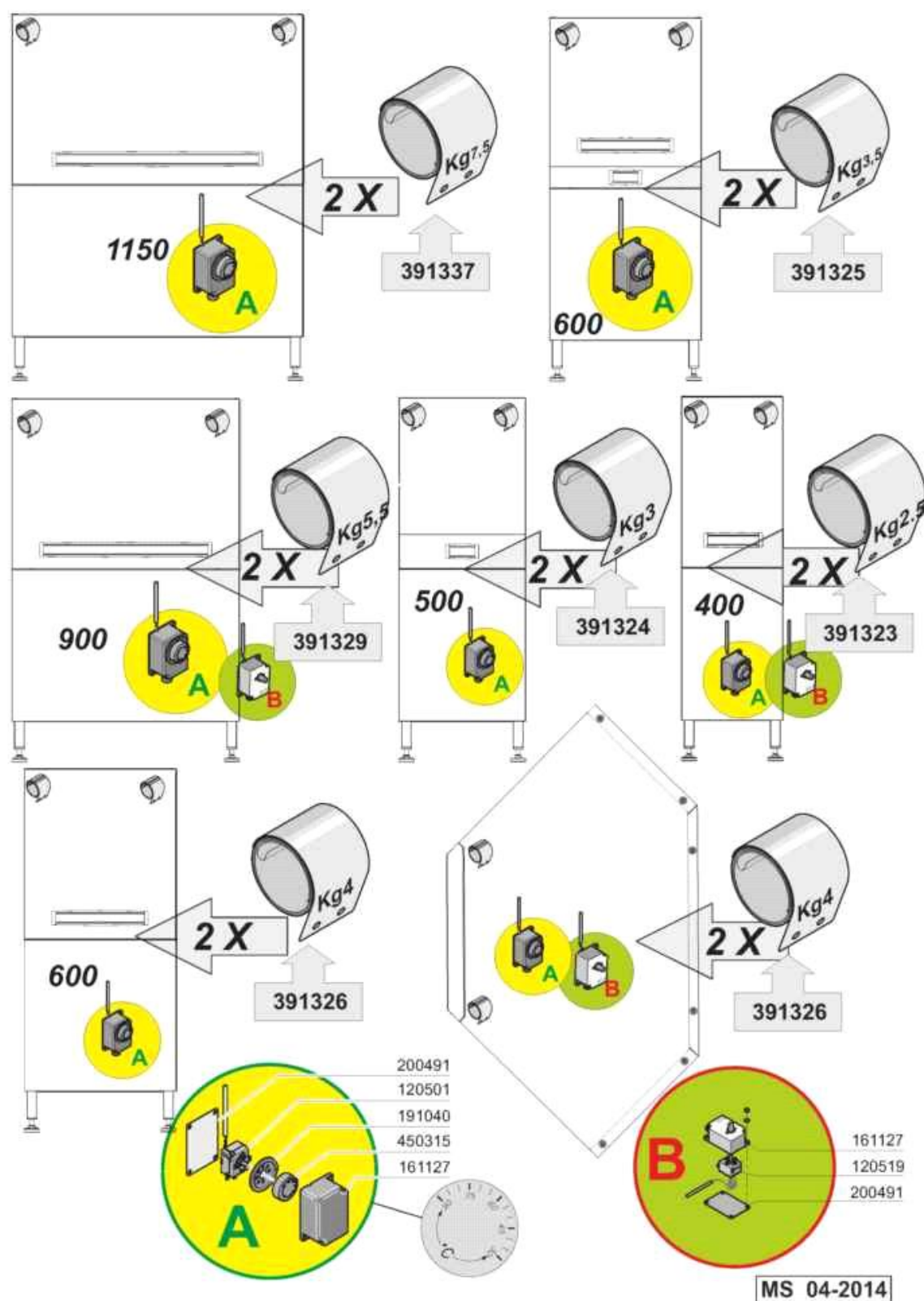


Asciugatura - Sechage - Dryer - Trocknung - Secado

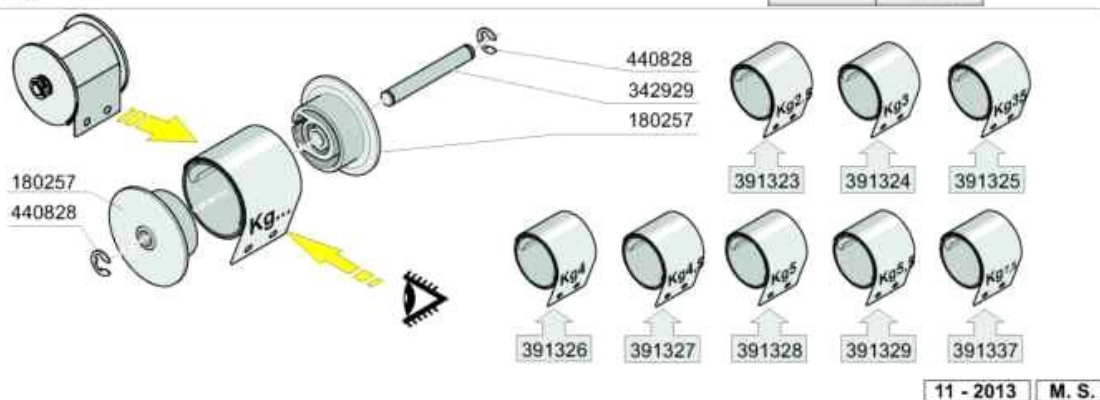
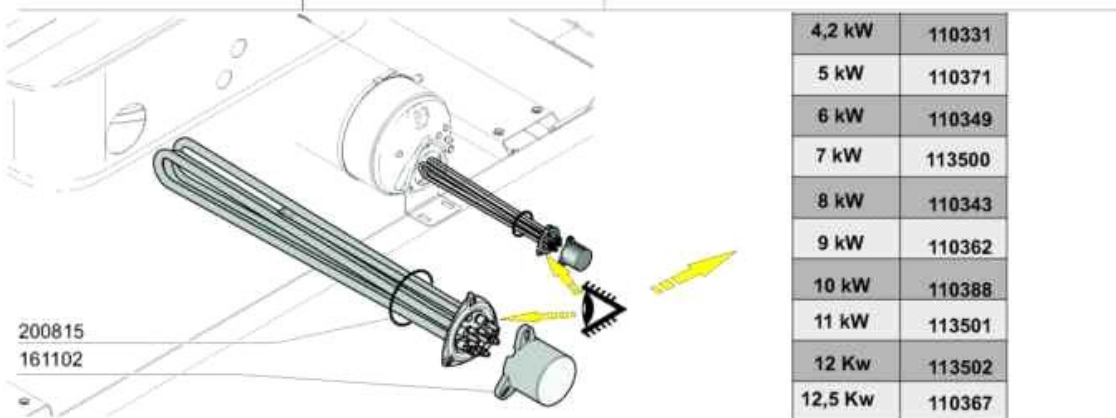
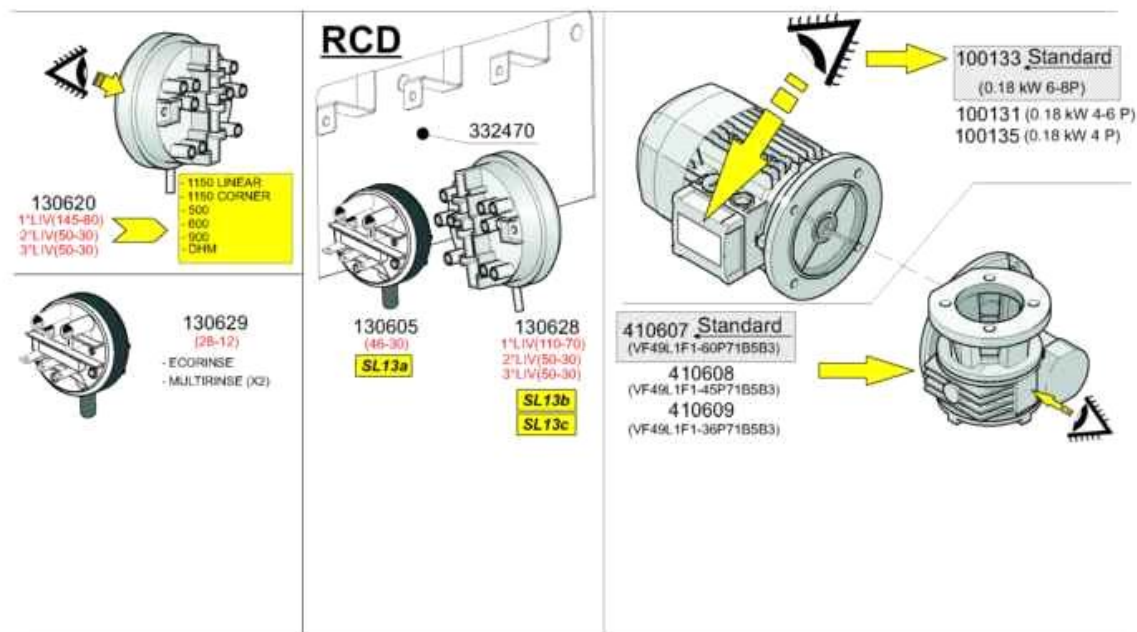
220/240 V					380/415 V			
KW	A	Fusibili Fusible Fuse Schmelzsicherung Fusible	A	Teleruttore Contacteur Contactor Schaltschütz Contactor	A	Fusibili Fusible Fuse Schmelzsicherung Fusible	A	Teleruttore Contacteur Contactor Schaltschütz Contactor
6	20	130248	12	120429	12	130246	12	120429
9	25	130236	25	120437	16	130247	25	120437

Codice	Descrizione
120429	TEL.12AMP 24V 50HZ LC1D12B7
120437	TEL.25AMP 24V 50HZ LC1D25B7
120445	RELE S.B2/3 24V AC
120468	TELERUT.ABB 9A 24V 50/60HZ
120469	TELERUT.ABB 12A 24V 50/60HZ
120471	TELERUT.ABB 26A 24V 50/60HZ
120493	RELE' AD IMPULSI 130100240000
120496	RELE PASSO PASSO ABB E256-24
120648	TRASF.250VA 225****415/24V-24V
120649	TRASF.300VA 225****415/24V-24V
120650	TRASF.400VA 225****415/24V-24V
120651	TRASF.500VA 225****415/24V-24V
120745	SEZIONATORE QUADRIPOLORE 125A
120748	SEZIONATORE 80A 4P (120749)
120749	SEZIONATORE 63A 4P
120858	RELE' TERMICO ABB 0,4-0,63A
120859	RELE' TERMICO ABB 0,63-1A
120863	RELE' TERMICO ABB 2,8-4A
120864	RELE' TERMICO ABB 4,5-6,5A
121020	MAGNETOTERMICO ABB S203 C20 3P
121021	MAGNETOTERMICO ABB S203 C25 3P
121022	MAGNETOTERMICO ABB S203 C32 3P
121023	MAGNETOTERMICO ABB S203 C40 3P
121024	MAGNETOTERMICO ABB S203 C50 3P
121025	MAGNETOTERMICO ABB S203 C63 3P
121026	MAGNETOTERMICO ABB C80 3P
121314	SCHEDA MULTIF.APRS/AT/RELE'IMP
121326	INVERTER ATV12H018M2
121327	INVERTER ATV12H037M2
130236	FUSIB.LEGR. 14X51 25A GL14325
130246	FUSIB.LEGR.10,3X38 12A GL13312
130247	FUSIB.LEGR.10,3X38 16A GL13316
130248	FUSIB LEGR.20A-13320 GL10X38
130925	CONTATTO AUX MGT ABB S2C-H6R
130928	CONTATTO ABB 4NO
150227	BARRA OT.COLLEGAM.TERRA
150710	PORTAFUSIBILE 10,3X38ART.21401
200432	GOMMA SPUGNA ADES.8X4 EPDM
260201	VITE TCP 3X10 INOX A2 UNI6107
260223	VITE INOX "TB"-5X12-
260401	DADO STAMPATO 3MA INOX 5587
260403	DADI STAMP. D5 INOX UNI 5588
260404	DADI TORNITI INOX"M6"UNI-5588
260503	RONDEL.PIANE D5 INOX UNI 6592
260509	RONDEL.GROW.D3 INOX UNI 1751

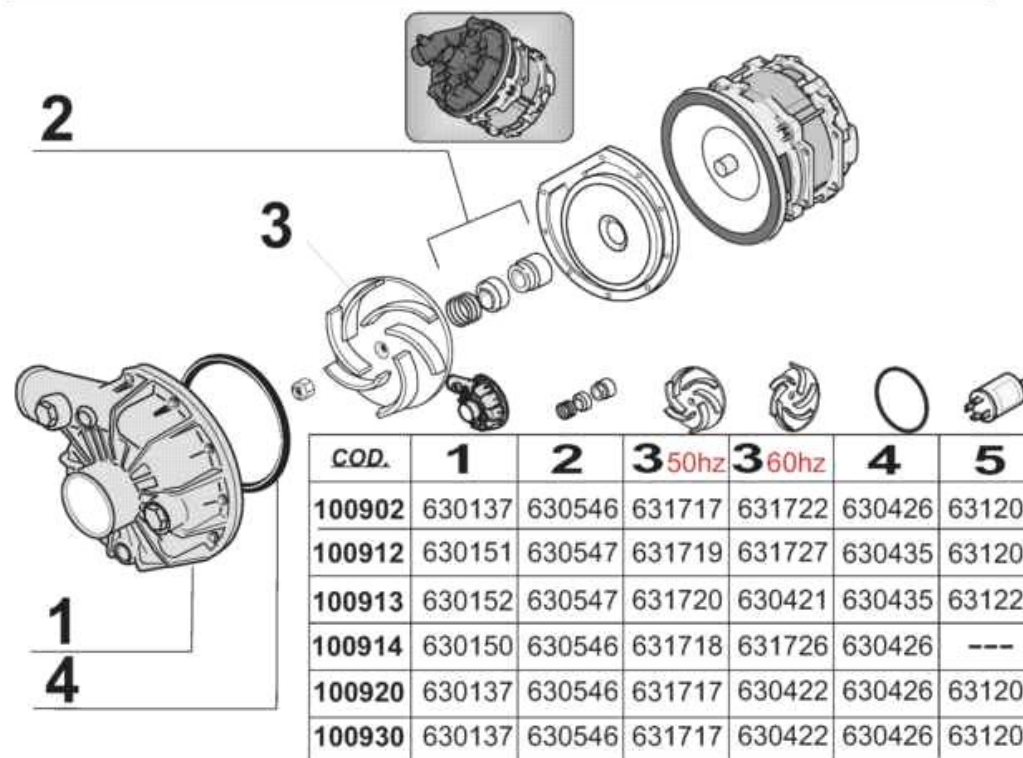
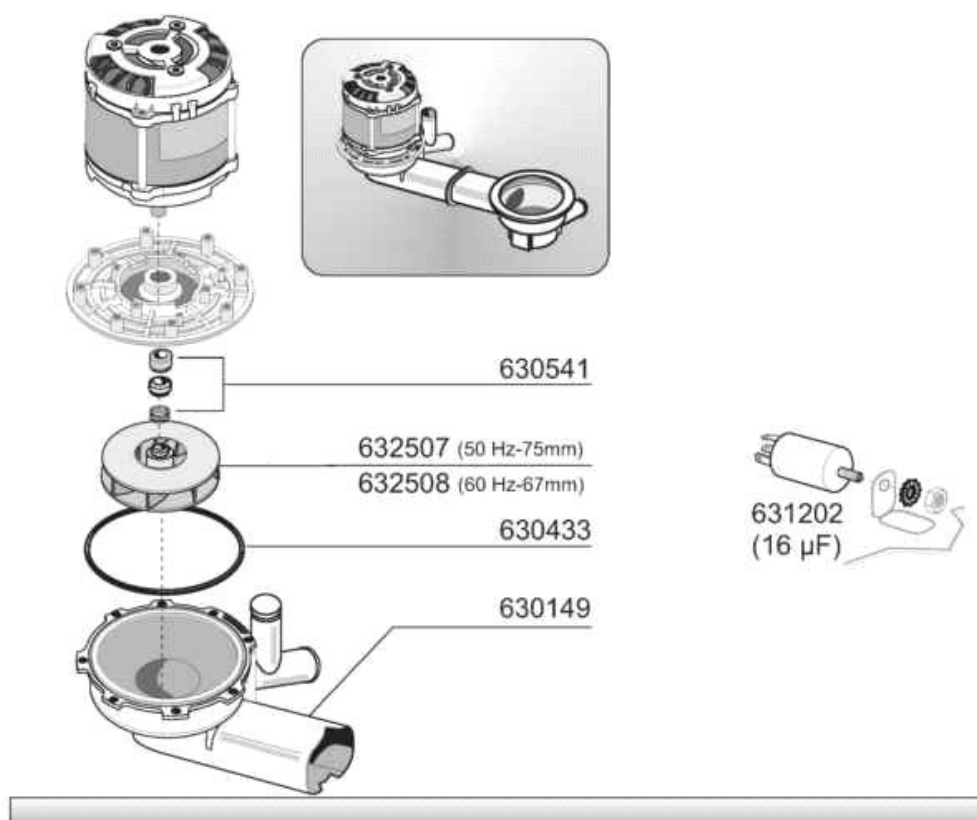
Codice	Descrizione
260512	RONDEL.GROWER D6 INOX UNI 1751
260518	RONDELLE DENTELLATE D8 INOX
261011	VITE TESTA TONDA "M5" + "QUADRO"
331960	SQUADR.SOSTEGNO RELE ACR-NE \$
630977	BOB.SG. ABB S200 24V S2C-A1



Codice	Descrizione
120501	TERMOSTATO 30/90? MT 1 TR/2
120519	TERM.95-125?SIC.LS1
161127	SCATOLA PER TERMOSTATO
191040	MASCHERINA MANOP.TERMOSTATO
200491	GUARNIZ.POSTER.SCAT.TERMOSTATO
391323	MOLLA CAR.COST.KG 2.5
391324	MOLLA CAR.COST.KG 3.0
391325	MOLLA CAR.COST.KG 3.5
391326	MOLLA CAR.COST.KG 4.0
391329	MOLLA CAR.COST.KG 5.5
391337	MOLLA CAR.COST.KG 7.5
450315	MANOP.TERM.90?COMENDA 109951



Codice	Descrizione
100131	MOTORE 4/6P 400V/3/50Hz
100133	MOT. 0.18kW 6-8P 400V/3/50Hz
100135	MOT.4P P71 0.18kW 230-400/3/50
110331	RES.FL.4200W.230/400V
110343	RES.FL.8000W.230/400V SP2845
110349	RES.FL.6000W.230/400V
110362	RES.FL.9000W.230/400V
110367	RES.FL.12500W.230/400V
110371	RES.FL.5000W 230/400V-108594
110388	RES.FL.10000W.230/400V
113500	RES.FL.7000W.230/400V L410
113501	RES.FL.11000W.230/400V
113502	RES.FL.12000W.230/400V
130605	PRESSOST.1.LIV.46-30
130620	PRESSOST.3.LIV.50-30/145-80
130628	PRESSOST.3.LIV.110-70
130629	PRESSOST.1.LIV28-12 art.761175
161102	COPRIRESISTENZA H 50(ALTO)
180257	FLANGIA LAT.MOLLE PORTA RIBASS
200815	GUARN.OR 6X56X68
332470	SQ.SOST.PRESSOSTATI
342929	ALBERINO X MOLLE PORTA
391323	MOLLA CAR.COST.KG 2.5
391324	MOLLA CAR.COST.KG 3.0
391325	MOLLA CAR.COST.KG 3.5
391326	MOLLA CAR.COST.KG 4.0
391327	MOLLA CAR.COST.KG 4.5
391328	MOLLA CAR.COST.KG 5.0
391329	MOLLA CAR.COST.KG 5.5
391337	MOLLA CAR.COST.KG 7.5
410607	RID.BONF.VF49L1F1-60P71B5B3
410608	RID.BONF.VF49L1F1-45P71B5B3
410609	RID.BONF.VF49L1F1-36P71B5B3
440828	ANELLO BENZING D7 DIN6799 INOX



12 - 2015 M. S.

Codice	Descrizione
100902	POMPA 0,85kW ZF522DX 230V/1/50
100912	POMPA 0.5KW ZF210APSX 230/50/1
100913	POMPA 0.99kW ZF210V 230V/1/50
100914	POMPA 1.24kW 230-400V/3/50Hz
100920	POMPA 0,85KW ZF522DX 230/1/50
100930	POMPA 0,85KW ZF522DX 230/1/50
630137	CHIOCCIOLA POMPA LGB ZF800DX
630149	CHIOCCIOLA POMPA 100910
630150	CHIOCC.POMPA 100914 (1115R)LGB
630151	CHIOCC.POMP.100912 0935-1R LGB
630152	CHIOCC.POMP.100913 0419-1R LGB
630421	GUARN.LGB 0,30 HP (100760)
630422	GUARNIZIONE OR X LOWARA 0,9KW
630426	GUAR. OR CORPO POMPA LGB ZF800
630433	GUARNIZIONE PER POMPA 100827
630435	GUAR. OR CORPO POMPA LGB ZF210
630541	TENUTA POMPA 100827
630546	TENUTA FRONT LGB (0145R+0140R)
630547	TENUTA FRONT LGB (0146R+0140R)
631202	CONDENSATORE 16 MF 450V
631207	CONDENSATORI 12,5MF.450V 85 C
631220	CONDENSATORE 14 MF.(2131R)
631717	GIRANTE POMP.LGB ZF522 0120D90
631718	GIRAN.POMP.LGB ZF650VDX 1387R
631719	GIR.POMPA LGB ZF210AP 1466R
631720	GIR.POMPA ZF210V 0116R 50Hz
631722	GIRANTE POMPA ZF522 -----60hZ
632507	GIRANTE DIAM.75 POMPA FC-AC2..
632508	GIRANTE DIAM.67 POMPA FC-AC2..

1150 AC2

100902
230/1/50hz (kW 0,85)


100902V01
230/1/60hz (kW 0,85)

100902V02
440/3/60hz (kW 0,85) INOX

100902V03
400/3/50hz (kW 0,85) INOX

100902V04
230/1/50hz (kW 0,85) INOX

100902V05
400/3/60hz (kW 0,85) INOX




100914
230-400/3/50hz (kW 1,24)

100914V01
230-400/3/60hz (kW 1,24)

100914V02
230-400/3/50hz (kW 1,24) INOX

100914V03
440/480/3/60hz (kW 1,24)

AC2A



1150 (AC2E...-AC3)

100914
230-400/3/50hz (kW 1,24)

100914V01
230-400/3/60hz (kW 1,24)

100914V02
230-400/3/50hz (kW 1,24) INOX

100914V03
440/480/3/60hz (kW 1,24) INOX




900

100914
230-400/3/50hz (kW 1,24)

100914V01
230-400/3/60hz (kW 1,24)

100914V02
230-400/3/50hz (kW 1,24) INOX


100914V03
440/480/3/60hz (kW 1,24) INOX



900 MR

100910
230/1/50hz (kW 0,48)

100910V01
230/1/60hz (kW 0,48)



PWS

100920
230/1/50hz (kW 0,85)

100920V01
230/1/60hz (kW 0,85)

100920V02
440/3/60hz (kW 0,85)

100920V03
400/3/50hz (kW 0,85)

100920V04
230/1/50hz (kW 0,85) INOX

100920V05
400/3/60hz (kW 0,85)

100930
230/1/50hz (kW 0,85)

100930V01
230/1/60hz (kW 0,85)

100930V02
440/3/60hz (kW 0,85)

100930V03
400/3/50hz (kW 0,85)

100930V04
230/1/50hz (kW 0,85) INOX

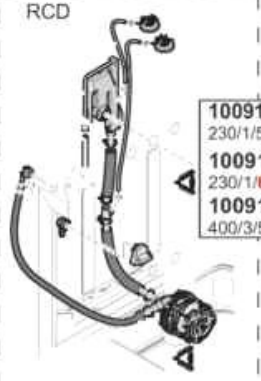
100930V05
400/3/60hz (kW 0,85)

RCD

100912
230/1/50hz (kW 0,52)

100912V01
230/1/60hz (kW 0,52)

100912V03
400/3/50hz (kW 0,52)



600/DHM

100913
230/1/50hz (kW 0,99)

100913V01
230/1/60hz (kW 0,99)

100913V02
440/1/60hz (kW 0,99)

100913V03
400/3/50hz (kW 0,99)

100913V04
230/1/50hz (kW 0,99) INOX

100913V05
400/3/60hz (kW 0,99)

100913V06
480/3/60hz (kW 0,99)

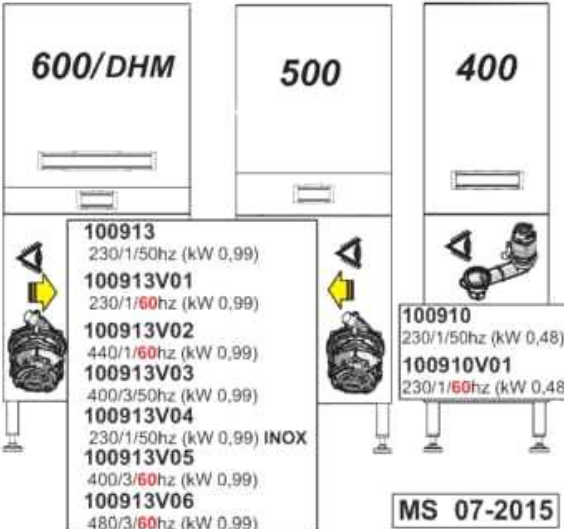
500

100910
230/1/50hz (kW 0,48)

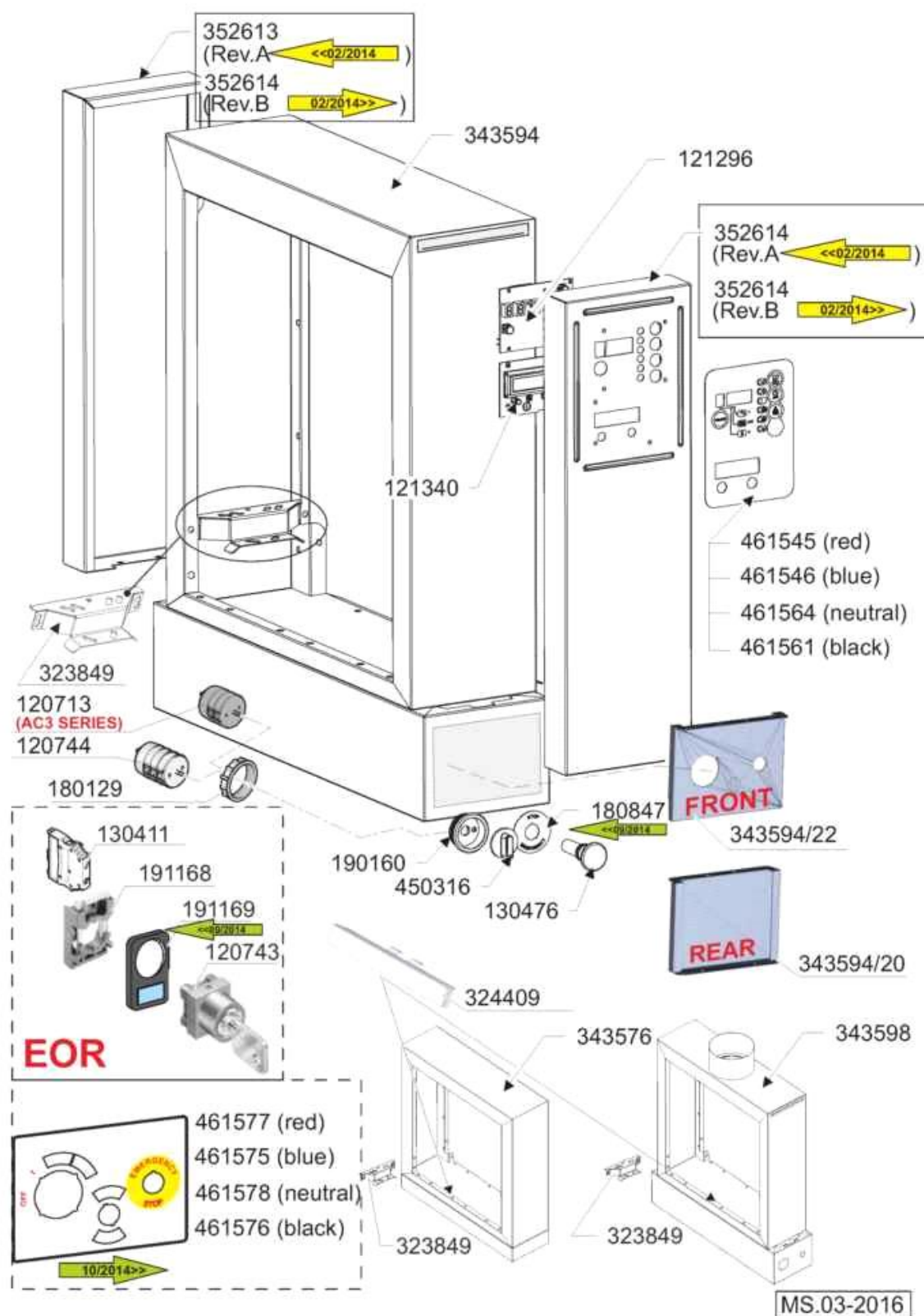
100910V01
230/1/60hz (kW 0,48)

400

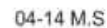
MS 07-2015



Codice	Descrizione
100902	POMPA 0,85kW ZF522DX 230V/1/50
100902V01	POMPA 0,85kW ZF522DX 230V/1/60
100902V02	POMPA 0,85KW ZF522DX 440V/3/60
100902V03	POMPA 0,85KW ZF522DX 400V/3/50
100902V04	POMPA 0,85kW ZF522AIDX 230/50
100902V05	POMPA 0,85KW ZF522DX 400V/3/60
100910	POMPA 0.48kW FC2006DX 230/1/50
100910V01	POMPA 0.48kW FC2006DX 230/1/60
100912	POMPA 0.5KW ZF210APSX 230/50/1
100912V01	POMPA 0.5KW ZF210APSX 230/60/1
100912V03	POMPA 0.5kW ZF210APSX 400/3/50
100913	POMPA 0.99kW ZF210V 230V/1/50
100913V01	POMPA 0.99KW ZF210V 230V/1/60
100913V02	POMPA 0.99kW ZF210V 440V/3/60
100913V03	POMPA 0.99kW ZF210V 400V/3/50
100913V04	POMPA 0.99kW 230V/1/50Hz INOX
100913V05	POMPA 0.99kW ZF210V 400V/3/60
100913V06	POMPA 0.99kW ZF210V 480V/3/60
100914	POMPA 1.24kW 230-400V/3/50Hz
100914V01	POMPA 1.24kW 230-400V/3/60Hz
100914V02	POMPA 1.24kW230-400V/3/50 INOX
100914V03	POMPA 1.24kWZF650 440-480/3/60
100920	POMPA 0,85KW ZF522DX 230/1/50
100920V01	POMPA 0,85KW ZF522DX 230/1/60
100920V02	POMPA 0,85KW ZF522DX 440/3/60
100920V03	POMPA 0,85KW ZF522DX 400/3/50
100920V04	POMPA 0,85KW ZF522AIDX 230/50
100920V05	POMPA 0,85KW ZF522DX 400/3/60
100930	POMPA 0,85KW ZF522DX 230/1/50
100930V01	POMPA 0,85KW ZF522DX 230/1/60
100930V02	POMPA 0,85KW ZF522DX 440/3/60
100930V03	POMPA 0,85KW ZF522DX 400/3/50
100930V04	POMPA 0,85kW ZF522AIDX 230/50
100930V05	POMPA 0,85KW ZF522DX 400V/3/60



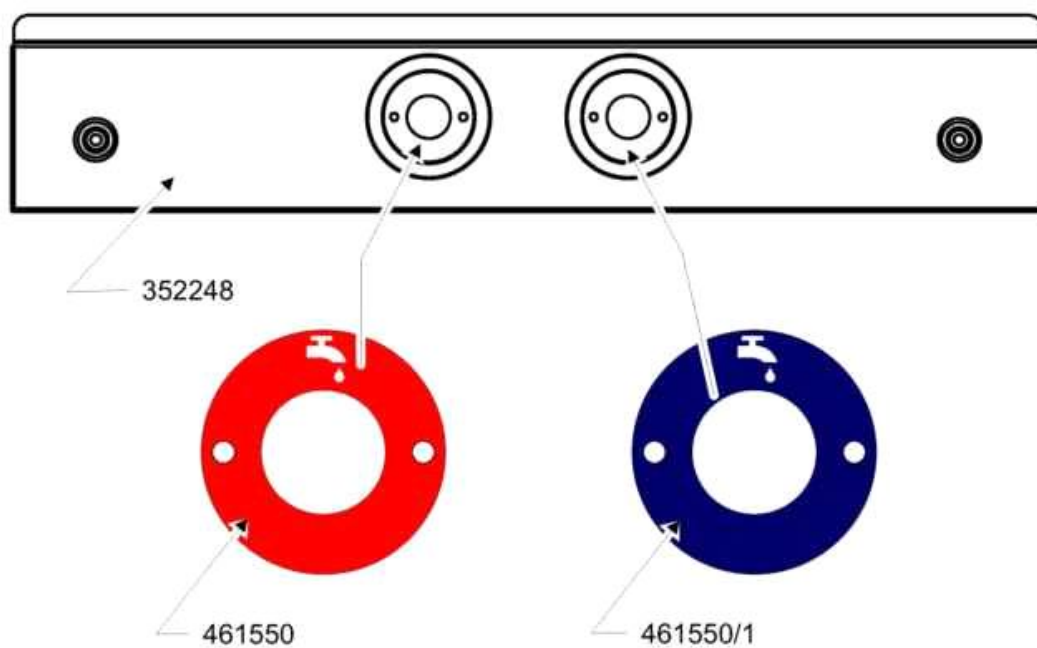
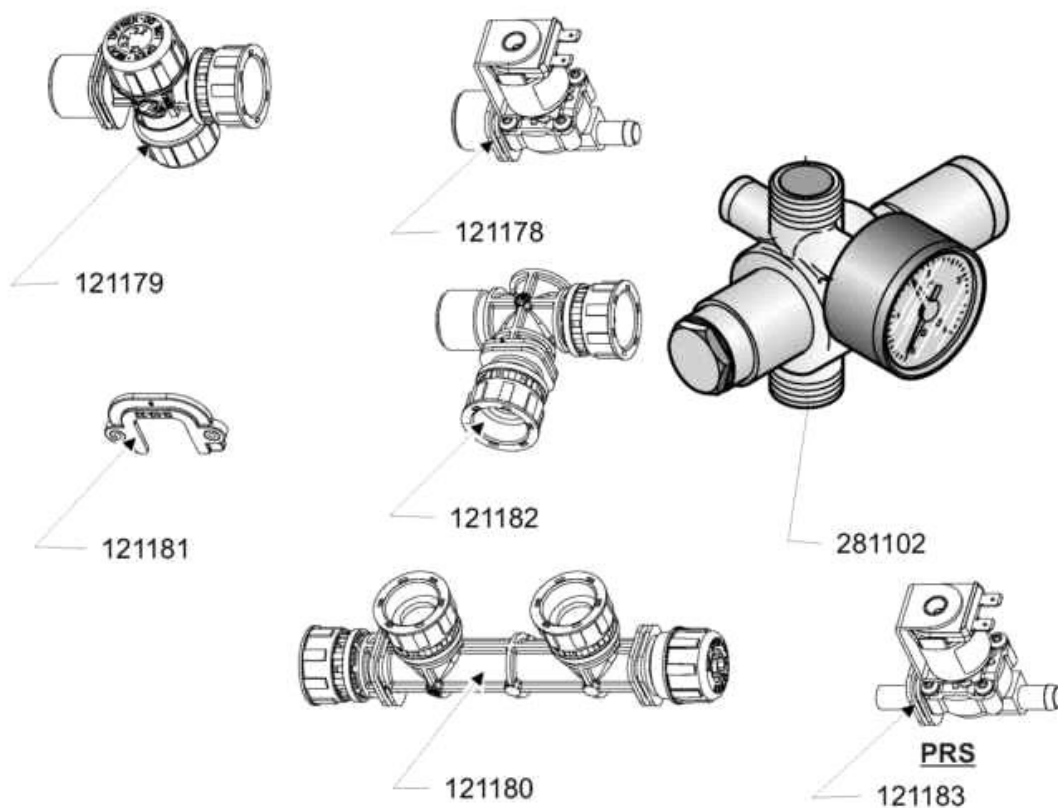
Codice	Descrizione
120713	COMM.PENT.15AMP.361552700
120743	SELET. A CHIAVE INSTAB.
120744	INTERR.QUADRIPOLORE 16A 380V
121296	SCHEDA COMANDI ACS/E DIGIT
121340	SCHEDA CONTALITRI DIG/HPS EASY
130411	CONTATTO MARCIA ABB MCB-10
130476	PULSANTE EM. BLC CEMA P9MER4RN
180129	GHIERA FISS. SUPP. INTERR.
180847	TARGH.EMERGENCY-STOP 080XTGR02
190160	SUPPORTO INTERR.(190138)X AC2
191168	SUPPORTO FISS.CONTATTI
191169	SUPPORTO TARGH. EOR "EO 6067"
323849	GUIDA CESTELLI PARASPRUZZI AC2
343576	CAPOT PARASPRUZZI ACD
343594	CAPOT PARASPRUZZI TECH
343594/20	PANN POSTER.INFER.CAP TECH
343594/22	PANN ANTER.INFER.CAP TECH
343598	CAPOT PARASP.TECH ECO+COLLARE
352613	PANN.POST.CAPOT TECH
352614	PANN.ANTER.X CAPOTT.200 AC2..
450316	MANOPOLA GRIGIA IND.ROSSO
461545	TARGA.COMAN.AC2.RED TECH
461546	TARGA.COMAN.AC2.BLU TECH
461561	TARGA.COMAN.AC3 BLACK TECH
461564	TARG.COMAN.AC2.BLU TECH NEUTRA



Codice	Descrizione
113603	CABL.CONTALITRI L=4m
113604	CABL.HPS EASY/RS232
113605	CABL.HPS EASY/SONDE NTC L=4m
113606	CABL.HPS EASY/CONT.ENER.L=1m
113607	CABL.HPS E./C.LIT.24VAC L=0,5m
120960	SONDA NTC + BLOCCHETTO
120974	CONTATORE ENERGIA HPS EASY
121330	FLUSSOM.1/4"G VERTON 300L/H
121335	SCHEDA INGRESSI 24VAC HPS EASY
121340	SCHEDA CONTALITRI DIG/HPS EASY
461547	TARGA.COMAN.AC2.RED CONTALITRI
461548	TARGA.COMAN.AC2.BLU CONTALITRI
461556	TARGA.COMANDI RED HPS EASY
461557	TARGA.COMANDI BLU HPS EASY

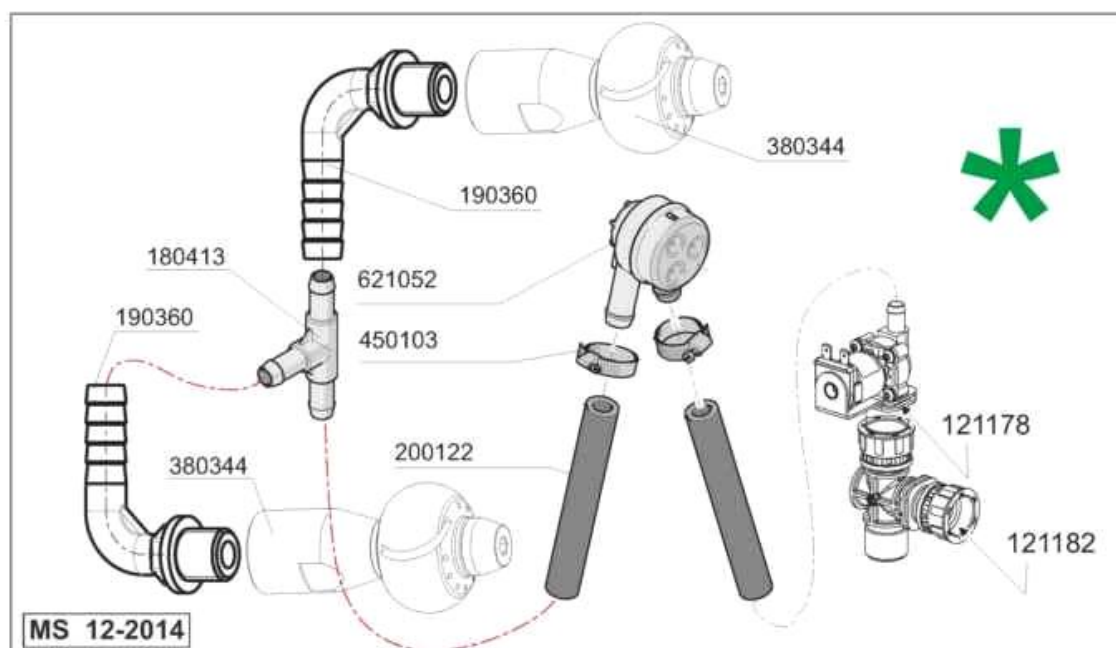
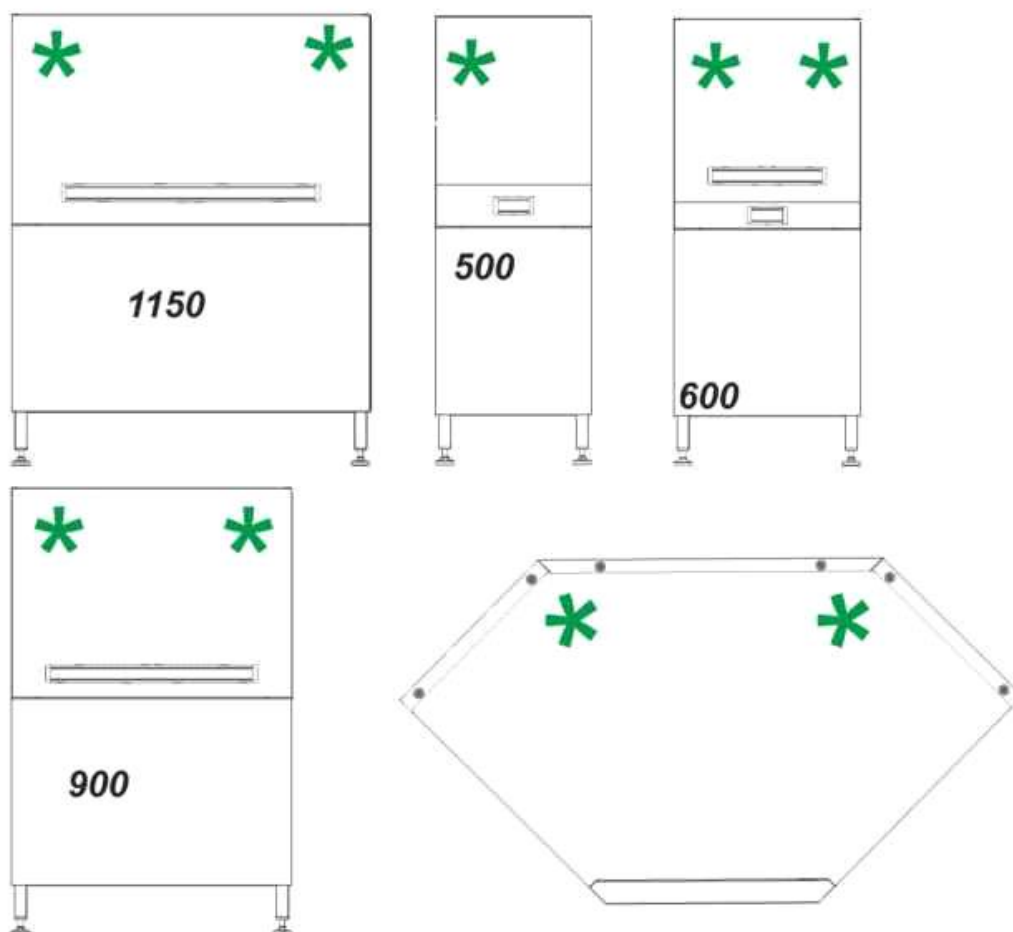


Codice	Descrizione
113603	CABL.CONTALITRI L=4m
113605	CABL.HPS EASY/SONDE NTC L=4m
113605V01	CABL.HPS EASY/SONDE NTC L=11m
113605V02	CABL.HPS EASY/SONDE NTC L=5m
113606	CABL.HPS EASY/CONT.ENER.L=1m
113607	CABL.HPS E./C.LIT.24VAC L=0,5m
120641	TRASF.30VA PR.24V 1 S.12V
120974	CONTATORE ENERGIA HPS EASY
121330	FLUSSOM.1/4"G VERTON 300L/H
121336	SCHEDA DWCORE HPS EASY PLUS
121340	SCHEDA CONTALITRI DIG/HPS EASY
130610	-PRESSOST.1 LIV.110-85 7721 UL
130611	PRESSOST.1.LIV. USA

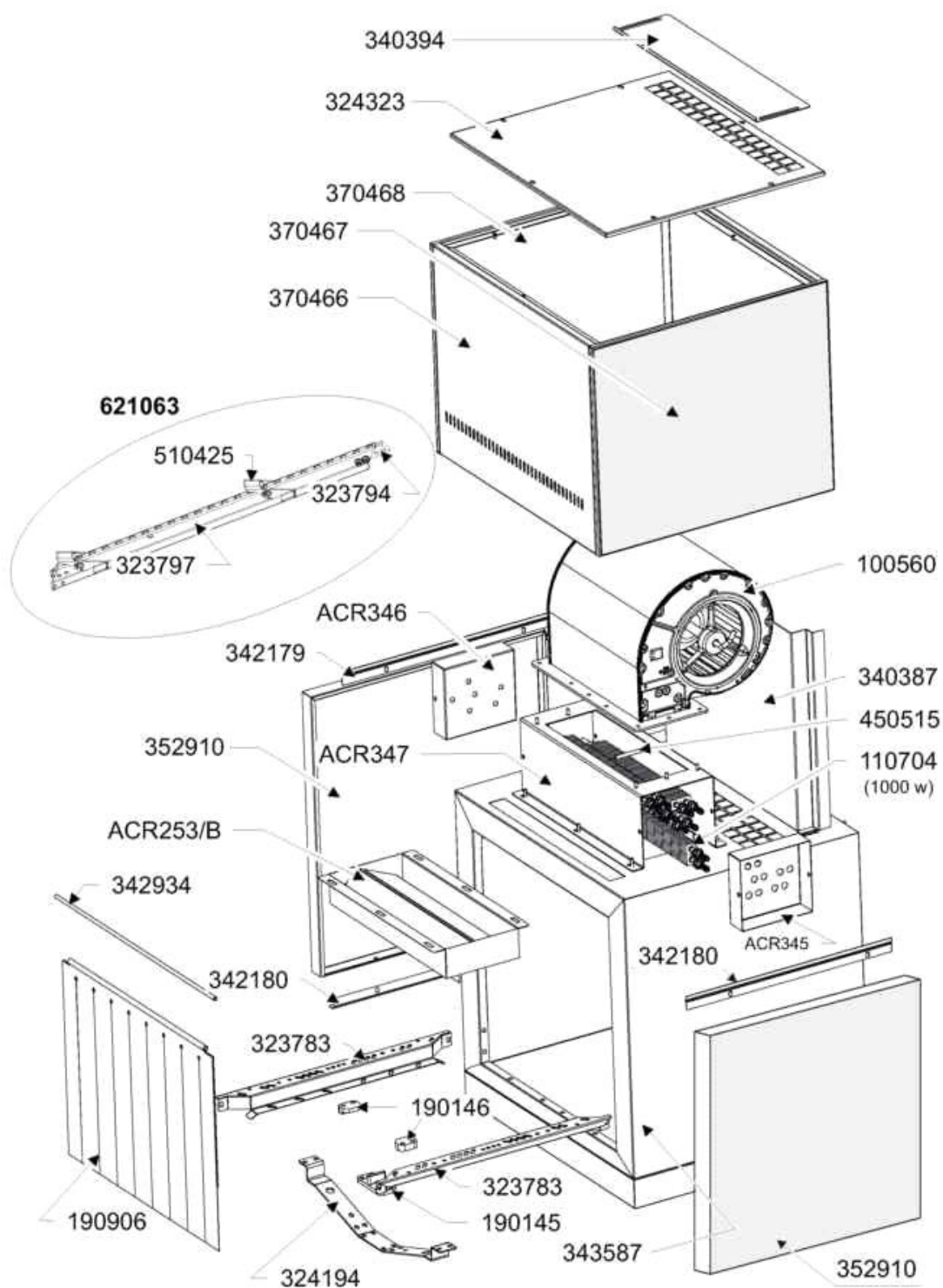


MS. 12-12

Codice	Descrizione
121178	EL.VALV.01.010.125 24V AC
121179	FILTRO SERIE 12.010.500
121180	DISTRIBUTORE DN 17 COD.9367
121181	STAFFA COD.1245 X EL.VALV.
121182	CONNESSIONE A T DN 17
121183	EL.VALV.SERIE 01.010.125 X PRS
281102	RIDUTTORE PRESS.1/2" + MAN.4 ATM
352248	PANN.LAT.TECNICO INF.AC2
461550	TARGA ADESIVA ACQUA CALDA
461550/1	TARGA ADESIVA ACQUA FREDDA

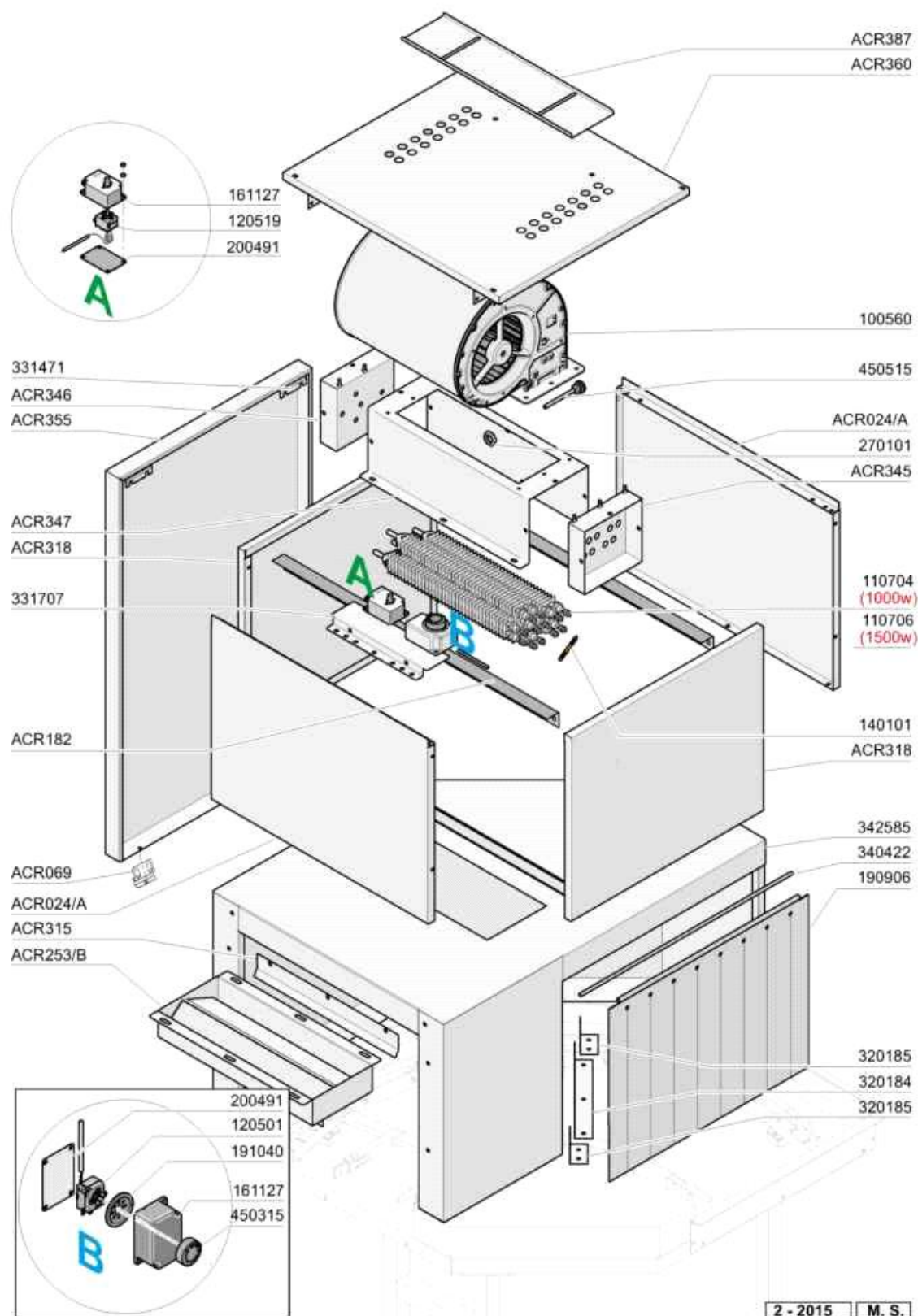


Codice	Descrizione
121178	EL.VALV.01.010.125 24V AC
121182	CONNESSIONE A T DN 17
180413	PORTAGOMMA A "T" D 11,5
200122	TUBO GOMMA 11X19 CASER/15 BLU
450103	FASCETTA FE ZN.13-20 H=9
621052	VALVOLA ANTIVUOTO COMP."DVGW"

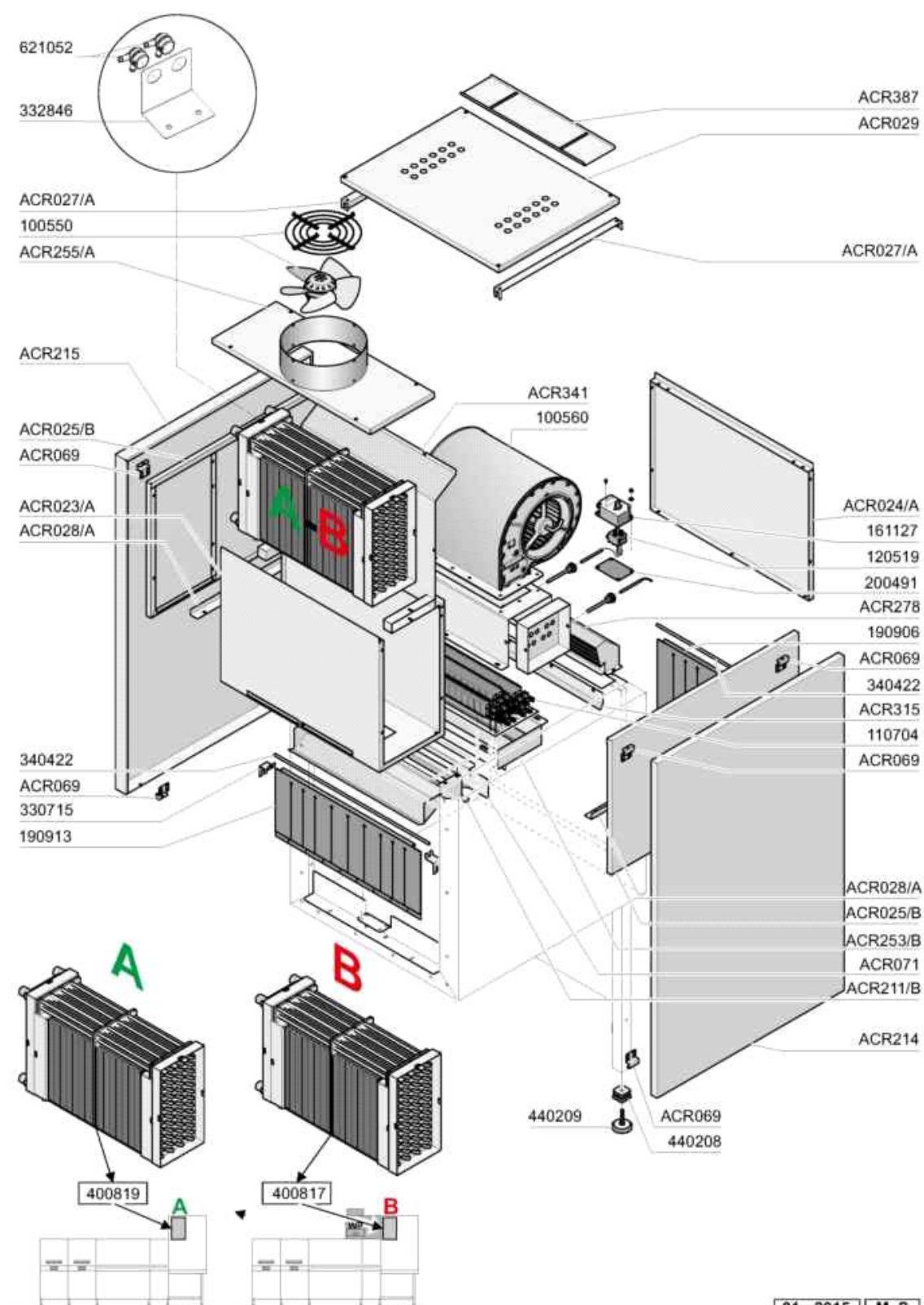


MS.03-16

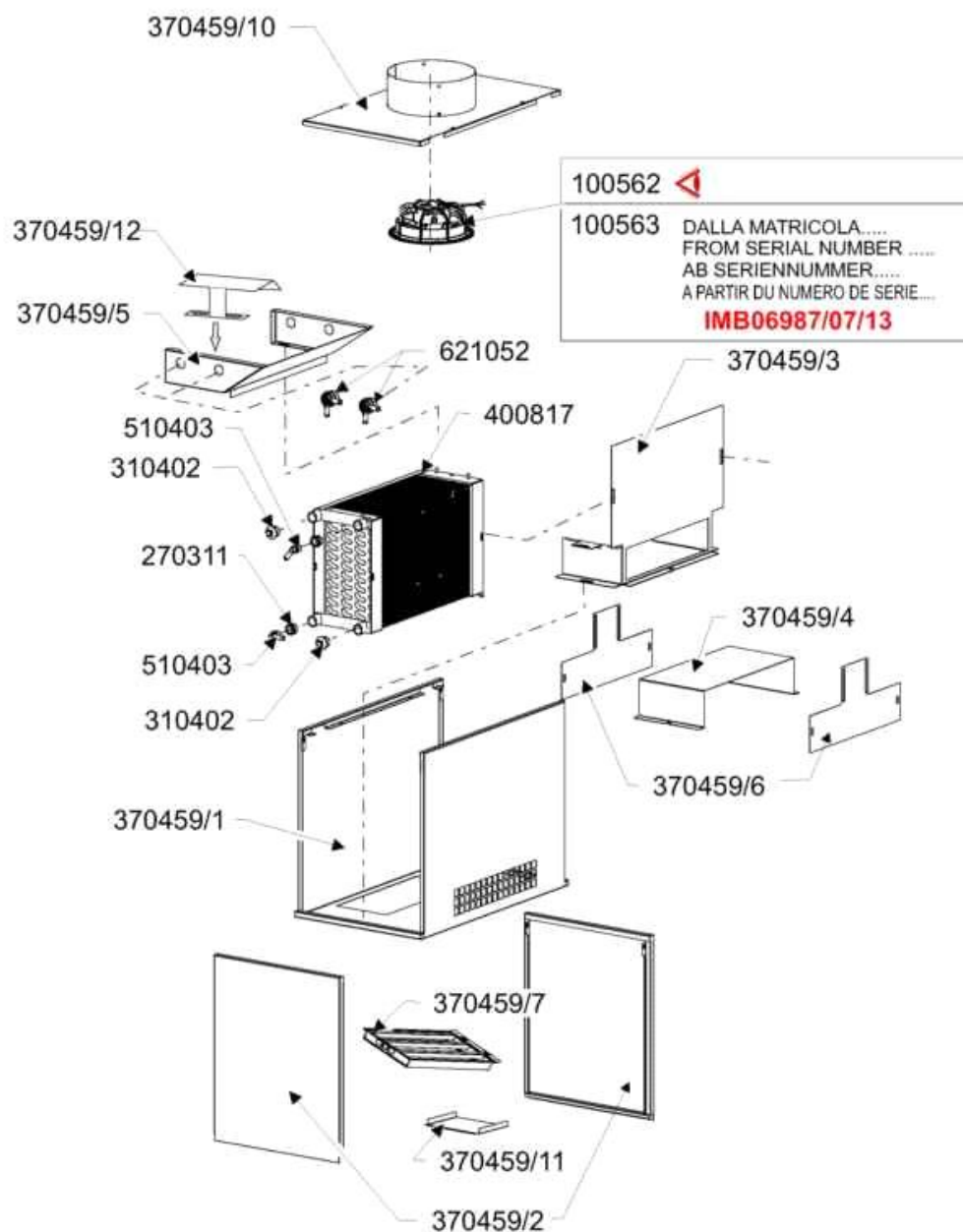
Codice	Descrizione
100560	VENT.CENTRIFUGO ZIEHL 0.42
110704	RES.ALET.1000W.230V
190145	SUPPORTO GUIDA PORTASAL.AC-ACR
190146	FERMO PER SUPPORTO GUIDA AC
190906	TENDINA ENT-USC.AC/ACR 620X480
323783	GUIDA CESTELLI X MODULI 600
323794	BLOCCH.COLLEG.GUIDE SALT.45?
323797	GUIDA SALT.MODULI 600
324194	TRAV.SUPP.GUIDA SALT.AC2
340387	PARATIA SEPARAZ.ARIA ASC ACD..
342179	SUPP.SUP.PANN.FRONT.DPC AS
342180	SUPP.INF.PANN.FRONT.DPC AS
342934	ALBERO TENDINA AC2-AC3
343587	CAPOT ASCIUGATURA AC2-600D
352910	PANN.FRONT.DPR AC2-600D
450515	GUAINA TERMOST.INOX 1 TUBO
510425	SALTARELLO INOX AC/ACR
621063	ASS.GUIDA SALT.AS.600 AC2
ACR253/B	CONVOGLIATORE INFER.AS ACE
ACR345	SPALLA PORTARESISTENZE ANT.ACE
ACR346	SPALLA PORTARESISTENZE POS.ACE
ACR347	SUPPORTO VENTILATORE AS ACE



Codice	Descrizione
100560	VENT.CENTRIFUGO ZIEHL 0.42
110704	RES.ALET.1000W.230V
110706	RES.ALET.1500W.230V
120501	TERMOSTATO 30/90? MT 1 TR/2
120519	TERM.95-125?SIC.LS1
140101	PIAST.COLLEG.REST.ALETT.AS
161127	SCATOLA PER TERMOSTATO
190906	TENDINA ENT-USC.AC/ACR 620X480
191040	MASCHERINA MANOP.TERMOSTATO
200491	GUARNIZ.POSTER.SCAT.TERMOSTATO
270101	CONTROD.1/2" ES.30 SP.7 INOX
331707	SQUAD. PORTA TERMOSTATI AS btm
340422	ALBERO TENDINA AC-ACR
342585	CAPOT AS ACE SX SU CURVE
450315	MANOP.TERM.90?COMENDA 109951
450515	GUAINA TERMOST.INOX 1 TUBO
ACR024/A	PANNELLO LATERALE AS TESTA ACE
ACR069	SQUADRETTA SOSTEGNO PANNELLI
ACR253/B	CONVOGLIATORE INFER.AS ACE
ACR315	PIASTRA CONVOGLIATORE ARIA AS
ACR345	SPALLA PORTARESISTENZE ANT.ACE
ACR346	SPALLA PORTARESISTENZE POS.ACE
ACR347	SUPPORTO VENTILATORE AS ACE
ACR387	SERRANDA ARIA SU COPERCHIO AS

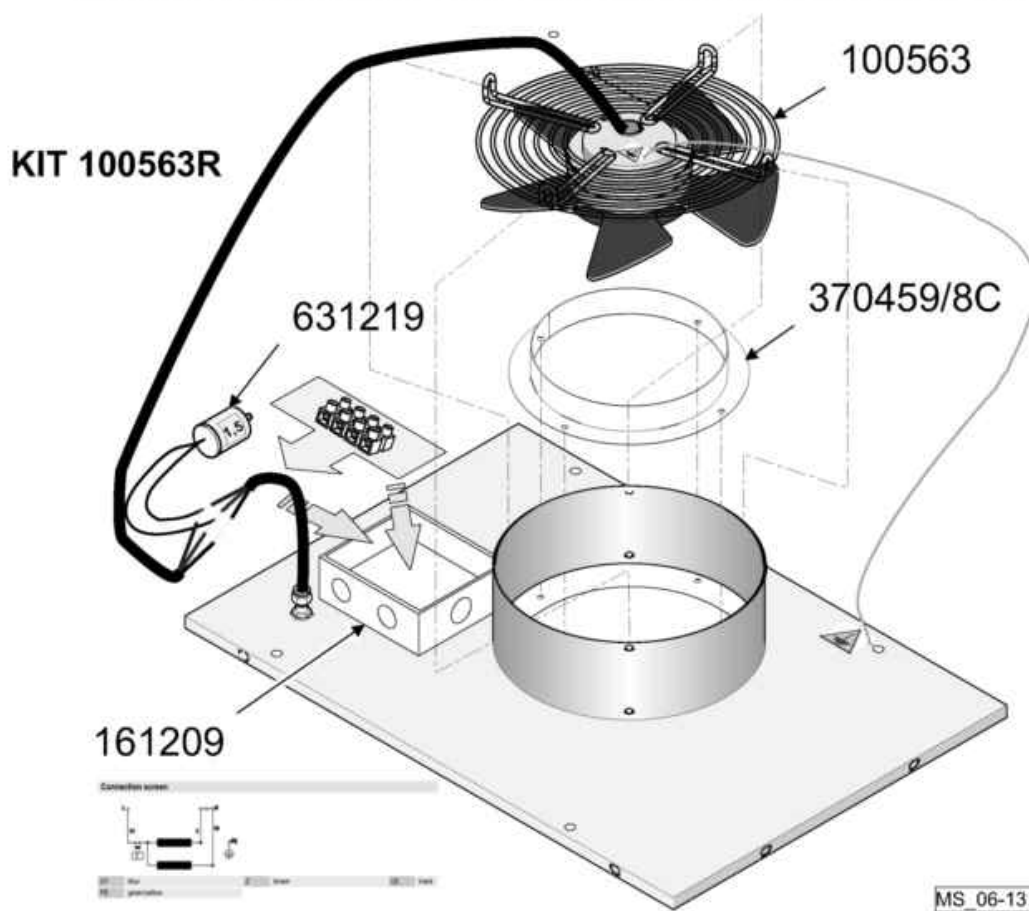
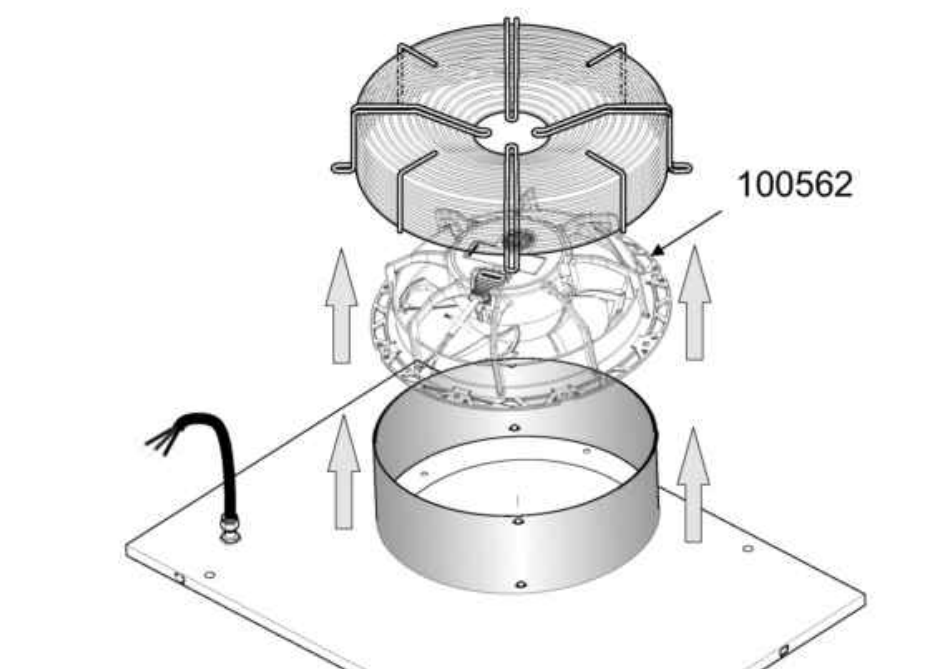


Codice	Descrizione
100550	VENT.ASSIALE X RC CON GRIGLIA
100560	VENT.CENTRIFUGO ZIEHL 0.42
110704	RES.ALET.1000W.230V
120519	TERM.95-125?SIC.LS1
161127	SCATOLA PER TERMOSTATO
190906	TENDINA ENT-USC.AC/ACR 620X480
190913	TENDINA ECOR.SE/1-620X270
200491	GUARNIZ.POSTER.SCAT.TERMOSTATO
330715	SQUAD. SUP.TEND. AC NE LV BTM
332846	SQUADR.VALVOLE ANTIVUOTO ARC
340422	ALBERO TENDINA AC-ACR
400817	BATTERIA PER C.V.AC/ACR/NE/NG
400819	BATTERIA VERTICALE RC 21,65X25
440208	BLOCCHETTO X PIEDE
440209	PIEDE PER NE
621052	VALVOLA ANTIVUOTO COMP."DVGW"
ACR023/A	CASSONE RC INTERNO AS ACE
ACR024/A	PANNELLO LATERALE AS TESTA ACE
ACR025/B	PANNELLO ANT. POST. AS
ACR027/A	TRAVERSA PANNELLI AS ACRS2
ACR028/A	TRAVERSA AGG.PANN.AS ACE
ACR029	COPERCHIO AS 800 ACRS2
ACR069	SQUADRETTA SOSTEGNO PANNELLI
ACR071	PARATIA ARIA PER RC
ACR211/B	PARATIA ASP.ARIA . AS
ACR214	PANNELLO ANT.COIBENT.AS800
ACR215	PANNELLO POS.COIBENT.AS800
ACR253/B	CONVOGLIATORE INFER.AS ACE
ACR255/A	COPERCHIO RC SU AS
ACR278	DEFLETTORE ASPIR.CASS.AS ACE
ACR315	PIASTRA CONVOGLIATORE ARIA AS
ACR341	SUPPORTO BATTERIA RC DA 21 ACE
ACR387	SERRANDA ARIA SU COPERCHIO AS

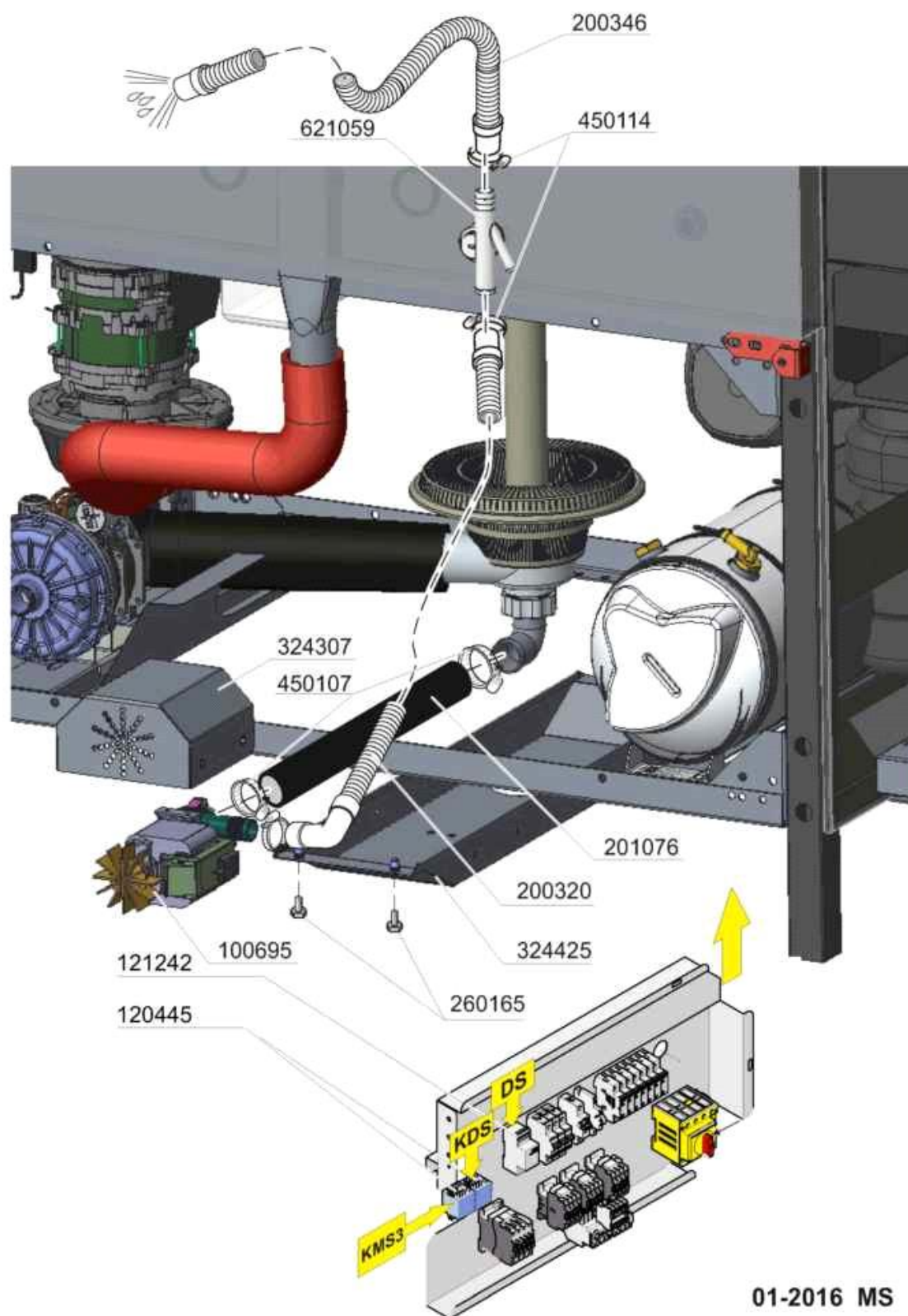


MS. 09-13

Codice	Descrizione
100562	VENT.W1G172-EC91-01 (100563R)
100563	VENT.ASSIALE RC A2E170AF2315
270311	RIDUZIONE MF 3/4"-1/2" OTTONE
310402	TAPPO 3/4"M FE ZINCATO FIG.2
370459/1	CASSONE RC 400mm (solo base)
370459/10	COPERCHIO RC400mm
370459/11	INVITO SGOCCIOLATOIO RC400mm
370459/12	DEFLETTORE PARASPRUZZI RC
370459/2	PANNELLO LATERALE RC 400mm
370459/3	PARATIA SOST. BATTERIA RC400mm
370459/4	CANALE DEVIAZ. ARIA RC400mm
370459/5	CARTER SUPERIORE RC400mm
370459/6	PARATIA REGOL. ARIA RC400mm
370459/7	SGOCCIOLATOIO PER RC400mm
400817	BATTERIA PER C.V.AC/ACR/NE/NG
510403	PORTAGOMMA 90?1/2"X12
621052	VALVOLA ANTIVUOTO COMP."DVGW"



Codice	Descrizione
100562	VENT.W1G172-EC91-01 (100563R)
100563	VENT.ASSIALE RC A2E170AF2315
100563R	KIT.SOTITUZ.100562 CON 100563
161209	CASSETTA 80 X 80 X 40 IP 44
370459/8C	COLLAR.ADATT.VENT.RC OLD-NEW
631219	CONDENSATORE 1,5 MF 400V



Codice	Descrizione
100695	POMPA.SCAR.POT.220V.50HZ
120445	RELE S.B2/3 24V AC
121242	TIMER X AUTOTIMER SEMPLIFIC.
200320	TUBO COLLEG.POMPA SCARICO FEHR
200346	TUBO SCAR.LAVABICCHIERI
201076	TUBO COLLEGAMENTO BT-TEE
324307	COPERCHIO X POMPA SCAR.AC2/ACD
324425	TRAV.SUPP.POMPA SC.GRE AC2/ACD
450107	FASCETTA FE ZN.38-50 H=12,2
450114	FASCETTA FE ZN.22-32 H=12,2
621059	COLLETTORE SCARICO COMPLETO