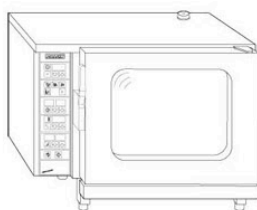


Ersatzteilkatalog

Spare parts list

PALUX Injection Heißluft-Dämpfer

ECS / ECA / ECP - 611 und 1011



Dieser Ersatzteilkatalog ist gültig

- ab Baujahr Januar 1994 bis 1998,
- für HLD 611 ab Geräte-Nr. 27158, für HLD 1011 ab Geräte-Nr. 3006

Typenübersicht**HLD (bis 1996)****ECS/ECA/ECP 611**

400 V 3N

390003, 397776, 397784, 397792, 397806, 397814

230 V 3

397822, 397830, 397849, 397857, 397865, 397873

ECS/ECA/ECP 1011

400 V 3N

397229, 397237, 397245, 397253, 397261, 397288

230 V 3

397296, 397318, 397326, 397334, 397342, 397350

HLD mit senkrechtem Wärmetauscher (ab 1996)**ECS/ECA/ECP 611**

400 V 3N

645893, 645907, 645915, 645923, 645931, 645958

230 V 3

645966, 645974, 645982, 645990, 646024, 646032

ECS/ECA/ECP 1011

400 V 3N

646768, 646776, 646784, 646792, 646806, 646814

230 V 3X

646822, 646830, 646849, 646857, 646865, 646873

HLD - Export (bis 1996)

200 V 3

606 316, 606 324, 606 332

200 V 3

606 340, 606 359, 606 367

HLD - Export, mit senkrechtem Wärmetauscher (ab 1996)

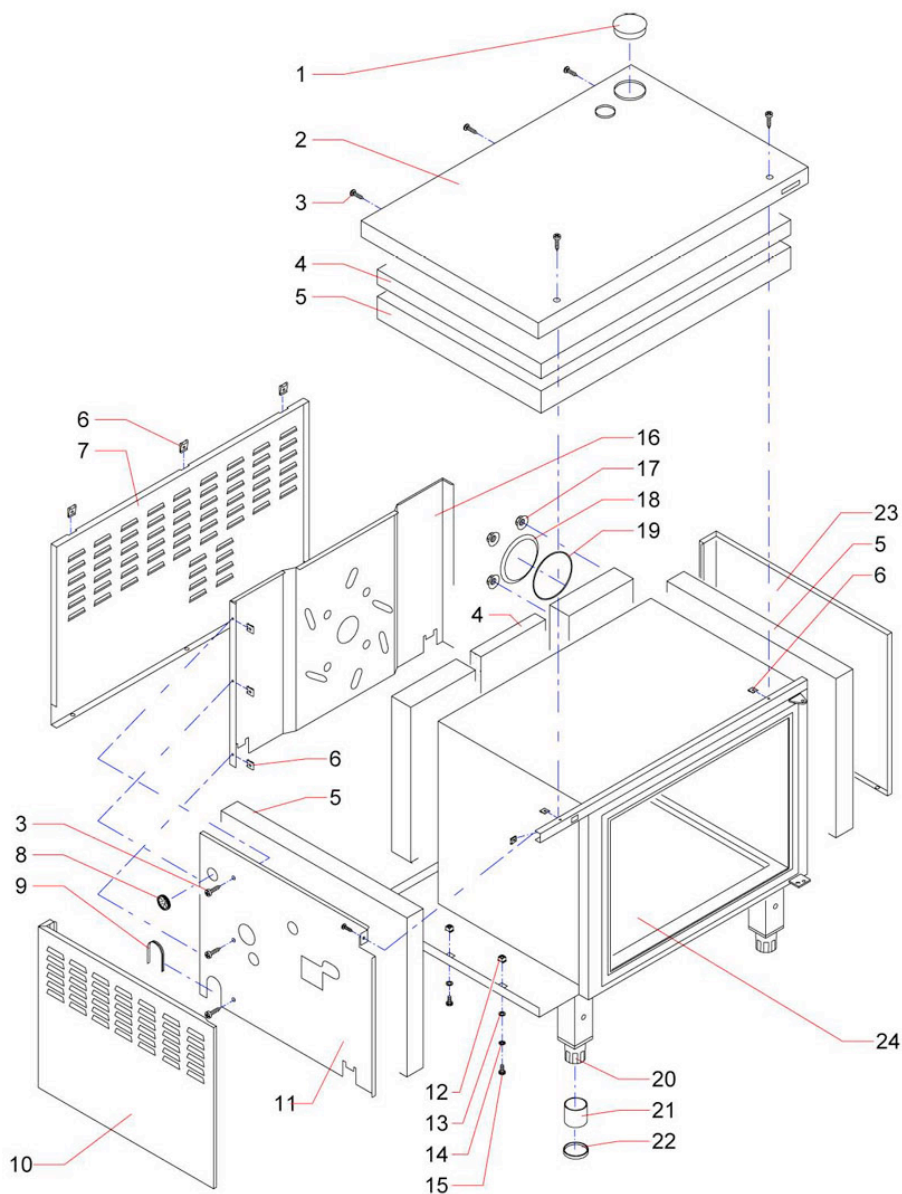
200 V 3

646040, 646059, 646067

200 V 3

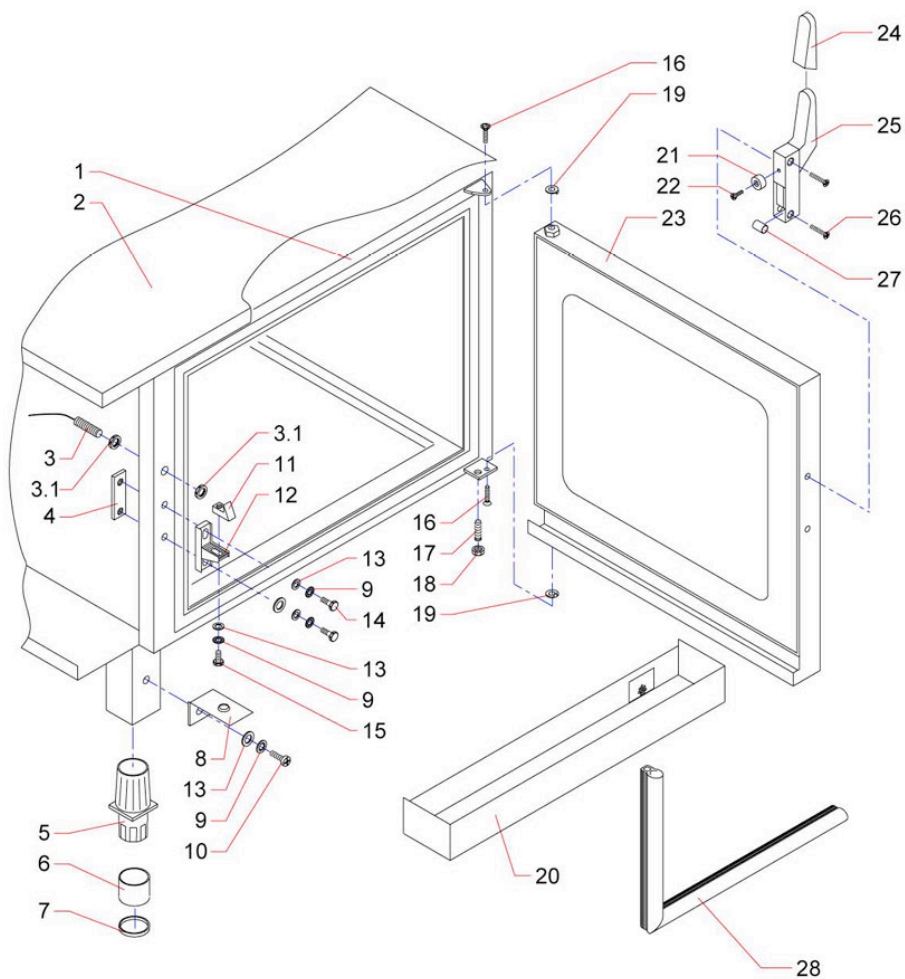
646881, 646903, 646911

housing



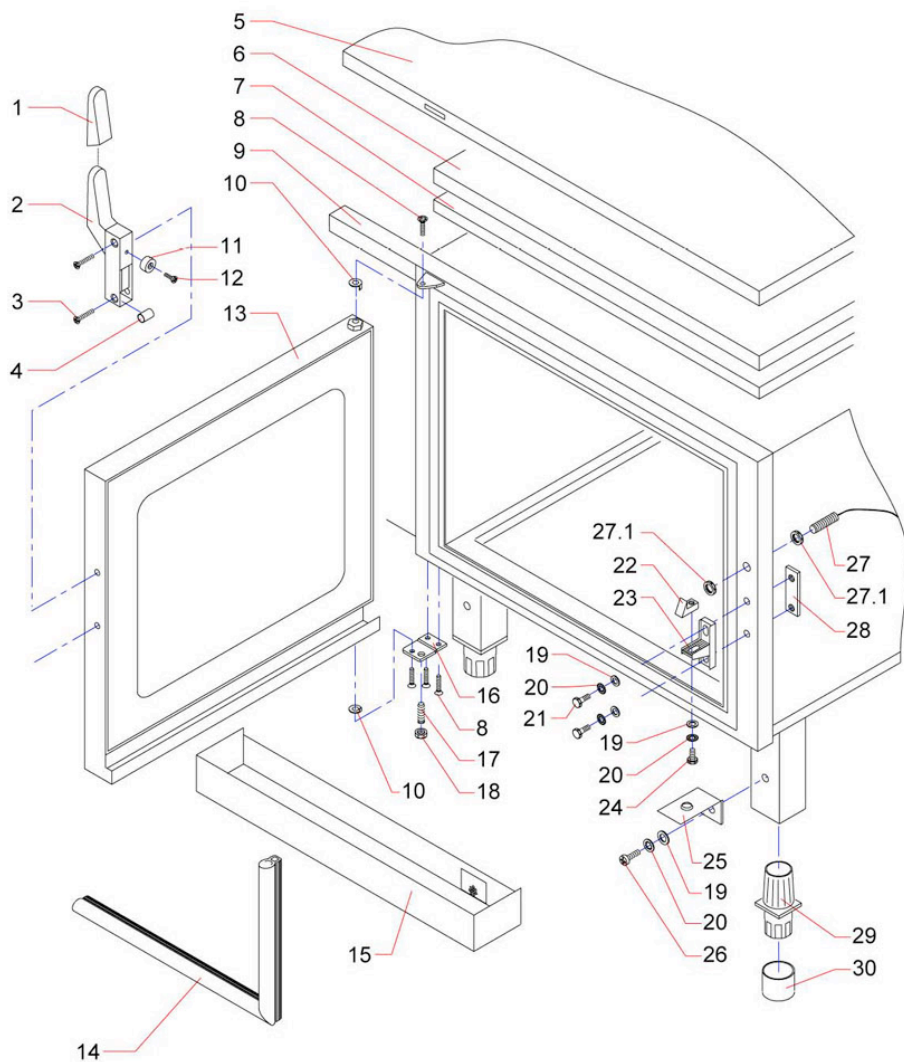
Pos.	Description	Article
1	covering cap	640786
2	cover for housing	639508
3	sheet metal screw	059803
4	heat insulation plate	180882
5	heat insulation plate	180890
6	snap action nut B3.9	227889
7	rear panel 611	380873
7	rear panel 1011 gas	371068
8	diaphragm bushing	232963
9	seal f. window	215961
10	side section left	380865
10	side section left	371793
11	insulation sheet	380962
11	insulating plate left	638692
11	insulation sheet	376809
11	Isolationsblech links HLD 1011 (ab 2.96)	
12	captive nut M6	194581
13	washer 6,4	004014
14	serrated lock washer A6.4	006777
15	screw M 6X16	251194
16	insulation sheet rear	380598
16	insulation sheet rear	638765
16	insulation sheet	372803
16	Isolationsblech hinten/rechts 1011 (ab 2.96)	
17	kombi nut w. washer	377740
18	covering plate	639540
19	O-ring	639532
20	knock in foot adj.	294675
21	rubber stopper	399361
22	catch	632244
23	side section right	380571
23	side section right	371920
24	casing 611 MMD 2/96	639249
24	casing HLG 1011	638382
	users instructions 611- 2011	387509
	cooking times german	359467

door hinged right hand side



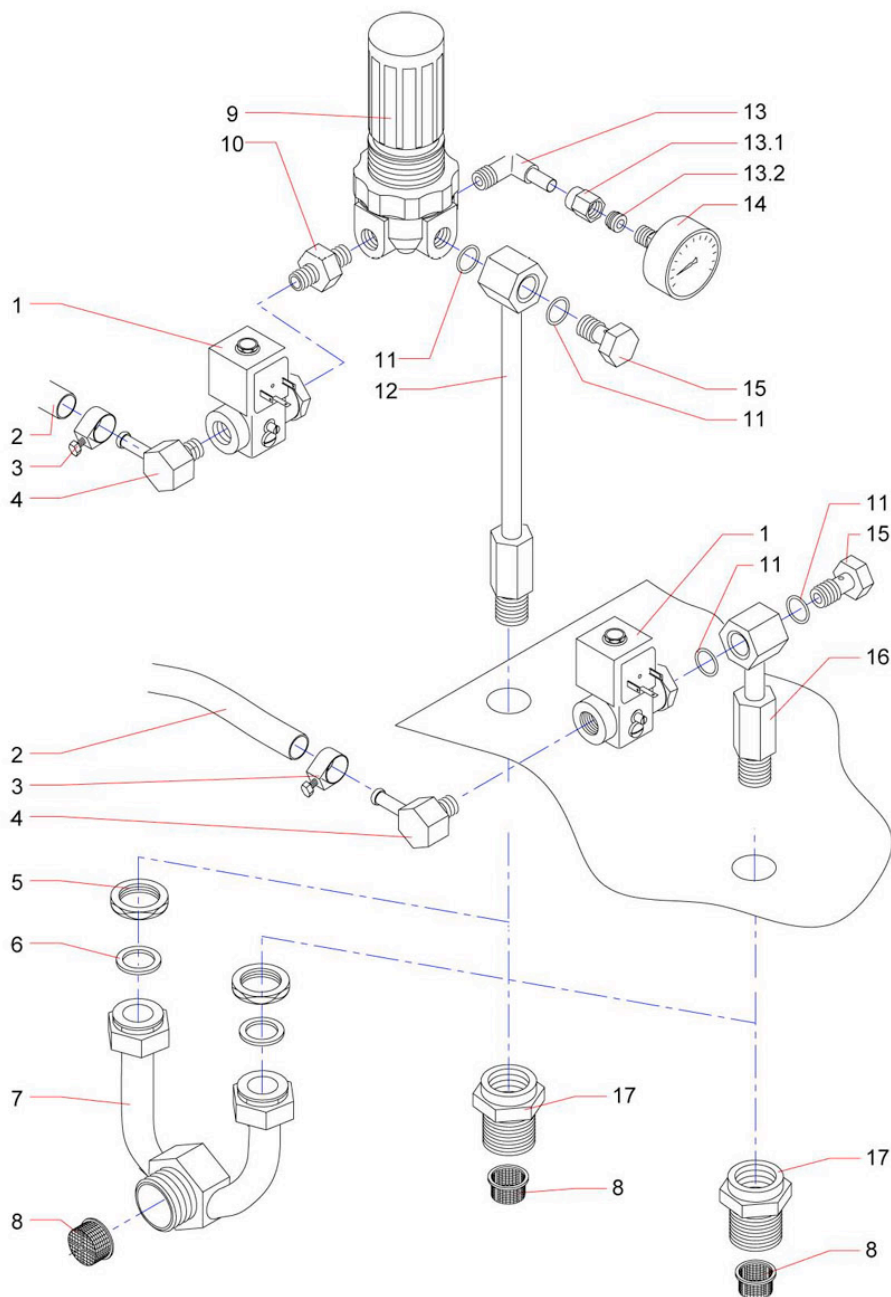
Pos.	Description	Article
1	casing steamer 611 electro	380938
1	casing steamer 1011 electro	380520
2	cover	380555
3	door limit switch	372986
3.1	Mutter M12x1 (im Türeansch. enthalten)	
4	threaded sheet	217093
5	knock in foot adj.	294675
6	rubber stopper	399361
7	catch	632244
8	angle bracket	382108
9	toothed washer 5,3	304816
10	screw M 5X10	189405
11	cap	382825
12	door hinge	382833
13	washer 5,3	003980
14	screw M 5X16	231657
15	screw M 5X10	003743
16	screw M 8X20	209791
17	thrust piece	602531
18	nut M 12	012343
19	lock washer	159530
20	drip groove	378003
21	magnet f. door limit switch	372994
22	screw M 4X12	010332
23	door cpl. 6/11 ISO GLASS	381314
23	door cpl. 1011	374601
24	PVC insulating cap	292532
25	shutter	377732
26	screw M 6X50	173185
27	distance bush	348090
28	sealing frame	384410
28	sealing frame 1011 gas	382310

door hinged left hand side



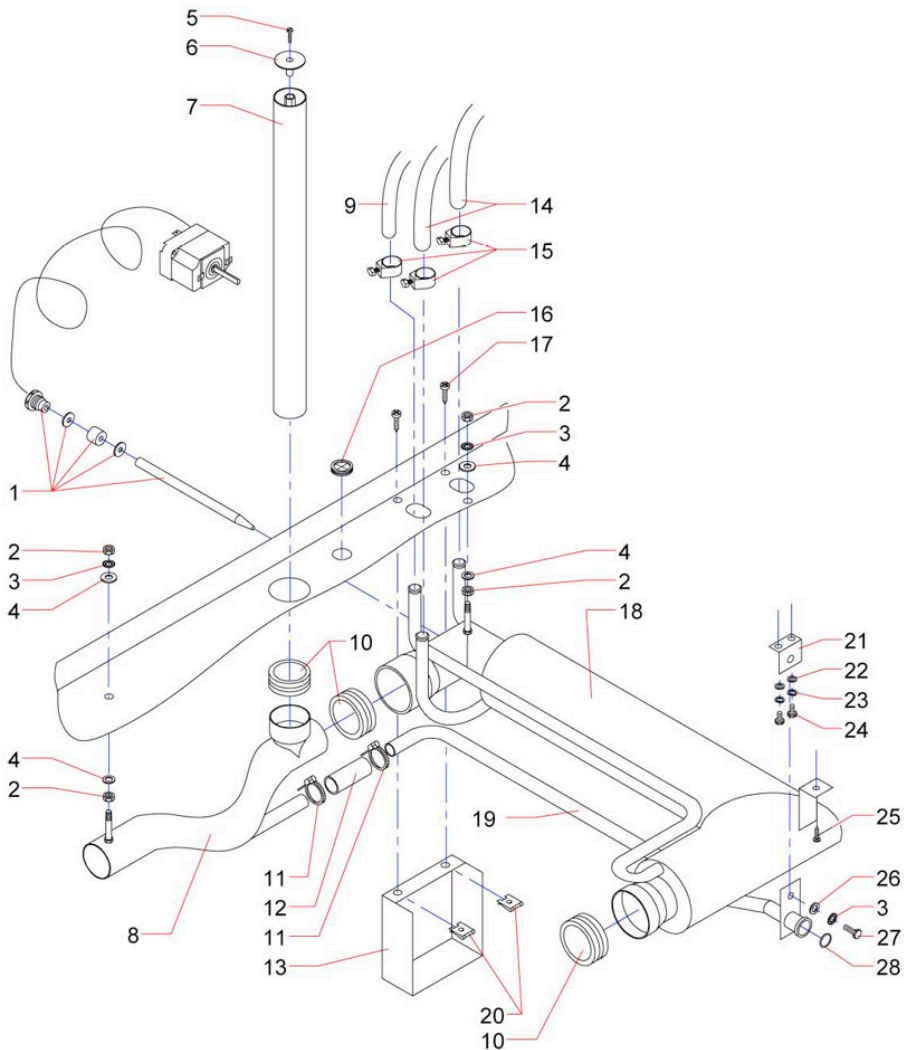
Pos.	Description	Article
1	PVC insulating cap	292532
2	shutter	377732
3	screw M 6X50	173185
4	distance bush	348090
5	cover	396591
6	heat insulation plate	180890
7	heat insulation plate	180882
8	screw M 8X20	209791
9	casing steamer 611 left sided	399809
9	casing steamer 1011 left sided	396575
10	lock washer	159530
11	magnet f. door limit switch	372994
12	screw M 4X12	010332
13	door cpl. 6/11 ISO GLASS	382280
13	door cpl. 1011	382116
14	sealing frame	384410
14	sealing frame 1011 gas	382310
15	drip groove	377821
16	door bearing bottom	602515
17	thrust piece	602531
18	nut M 12	012343
19	washer 5,3	003980
20	toothed washer 5,3	304816
21	screw M 5X16	231657
22	cap	382825
23	door hinge	382833
24	screw M 5X10	003743
25	angle bracket	382108
26	screw M 5X10	189405
27	door limit switch	372986
27.1	Mutter M12x1 (in Pos. 27 enthalten)	
28	threaded sheet	217093
29	knock in foot adj.	294675
30	rubber stopper	399361
	cabl. extension	382388

water connection



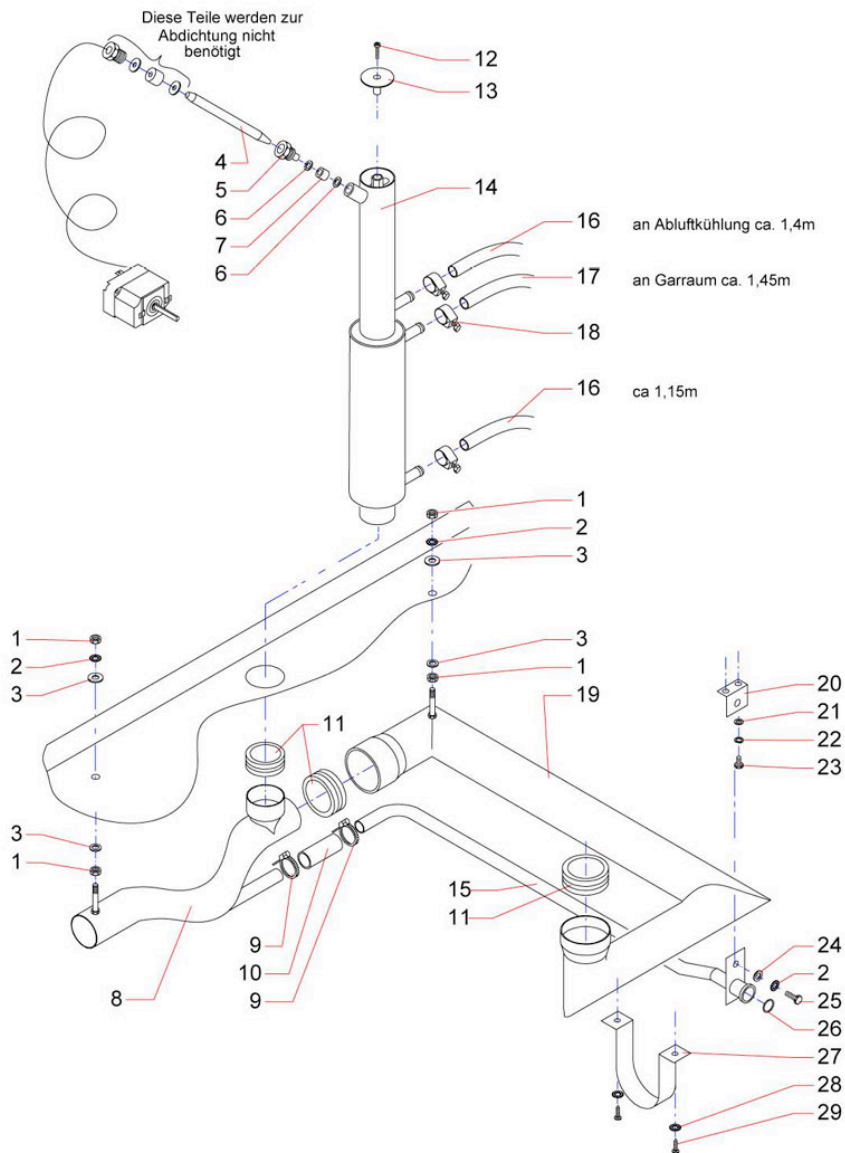
Pos.	Description	Article
1	solenoid valve	374806
2	hose 8,5x16	253847
3	hose clamp	276634
4	angle screw in funnel	582166
5	nut R 3/8"	035599
6	sealing ring 10x15x1	217840
7	coupling	348252
8	filter	249688
9	miniature pressure controller	577316
10	double nipple 1/8	754447
11	o-ring	013471
12	connecting pipe	213519
13	adjusting angle	375446
13.1	Überwurfmutter (in 375446 enthalten)	
13.2	Quetschnippel (in 375446 enthalten)	
14	pressure gauge	224758
15	coupling	172405
16	coupling cpl.	319155
17	reducing part	249696

heat exchanger till 1996



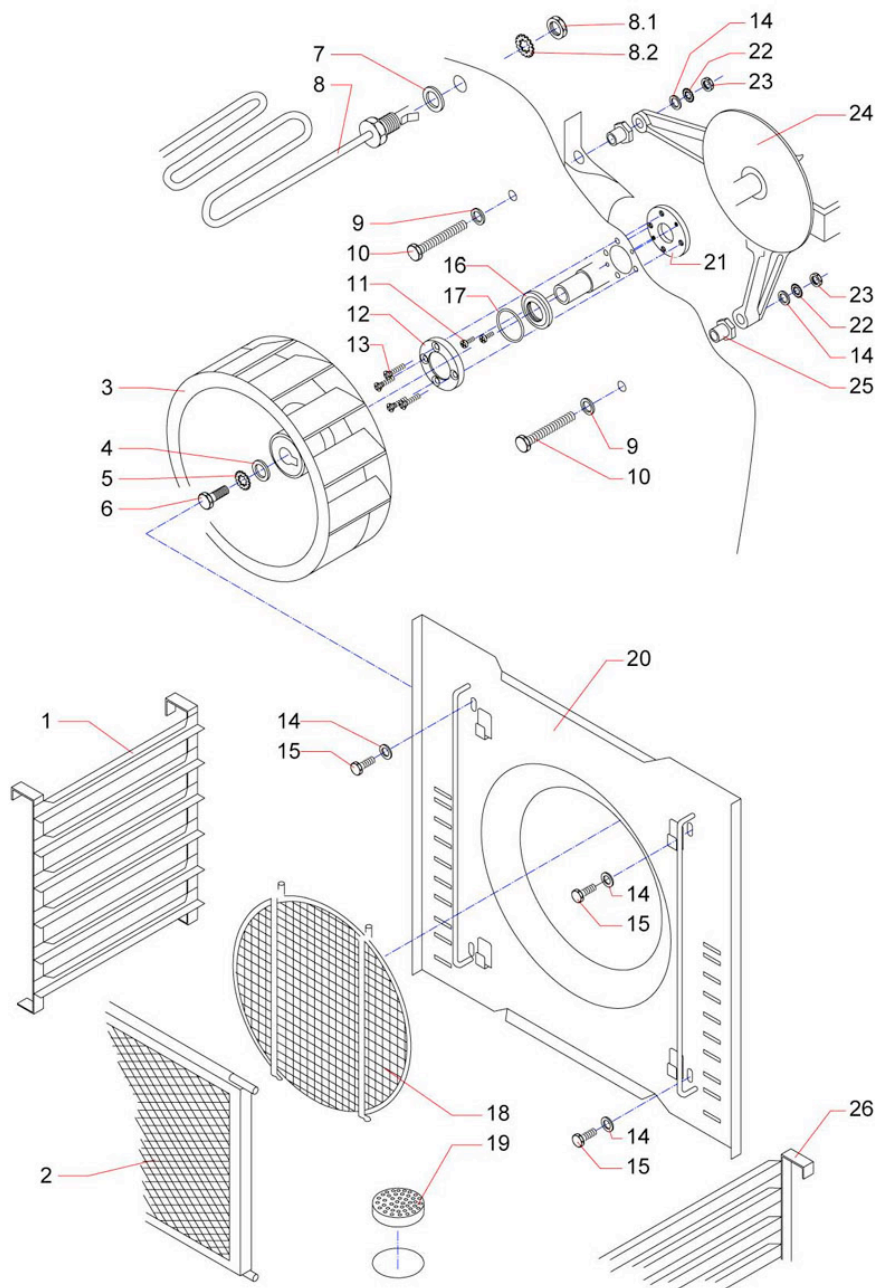
Pos.	Description	Article
1	thermostat 250 1pol.	091634
2	nut M 6	251887
3	serrated lock washer A6.4	006777
4	washer 6,4	000582
5	screw M 3X20	010464
6	steam lid	376701
7	steam exhaust pipe	380970
7	steam exhaust pipe	399353
8	siphon cpl.	376795
9	hose silicone	332402
10	sealing ring	155349
11	hose clip	228419
12	condenser hose	378089
13	protective box	399922
14	hose 8,5x16	253847
15	hose clamp	276634
16	diaphragm bushing	232963
17	sheet metal screw	059803
18	heat exchanger	371297
19	draining pipe cpl.	378097
20	snap action nut B3.9	227889
21	mounting sheet	217417
22	washer 5,3	003980
23	toothed washer 5,3	304816
24	screw M5 x 16	010685
25	sheet metal screw	059803
26	washer 6,4	004014
27	screw M 6X10	251836
28	o-ring	252417

heat exchanger since 1996



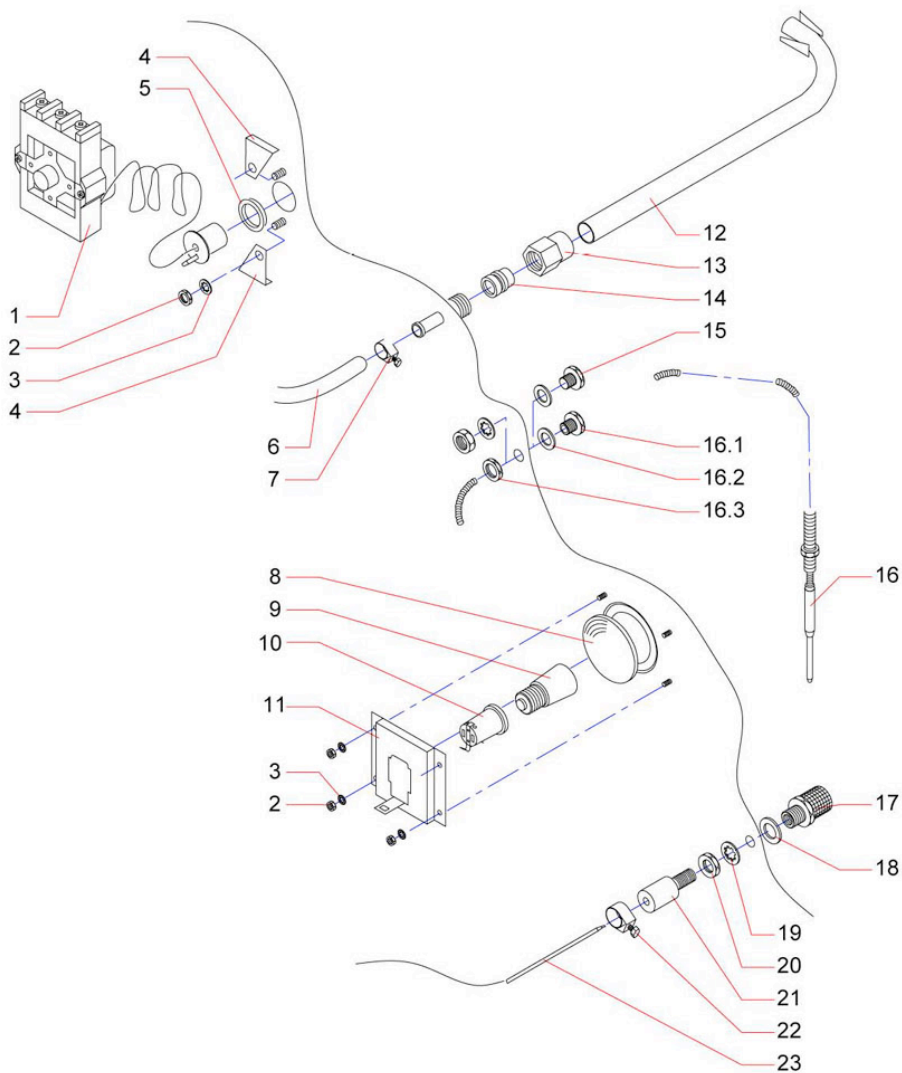
Pos.	Description	Article
1	nut M 6	251887
2	serrated lock washer A6.4	006777
3	washer 6,4	000582
4	thermostat 250 1pol.	091634
5	screw M10x1	126047
6	washer	260649
7	seal 3X1.5X6	268666
8	siphon cpl.	376795
9	hose clip	228419
10	condenser hose	378089
11	sealing ring	155349
12	screw M 3X20	010464
13	steam lid	376701
14	heat exchanger	639516
14	heat exchanger	562874
15	draining pipe cpl.	646105
16	hose 8,5x16	253847
17	hose silicone	332402
18	hose clamp	276634
19	draining pipe cpl.	638641
20	mounting sheet	217417
21	washer 5,3	003980
22	toothed washer 5,3	304816
23	screw M5 x 16	010685
24	washer 6,4	004014
25	screw M 6X10	251836
26	o-ring	252417
27	support f. outlet	639524
28	toothed washer 4,3	050849
29	sheet metal screw	059803

fan, air deflecting blades



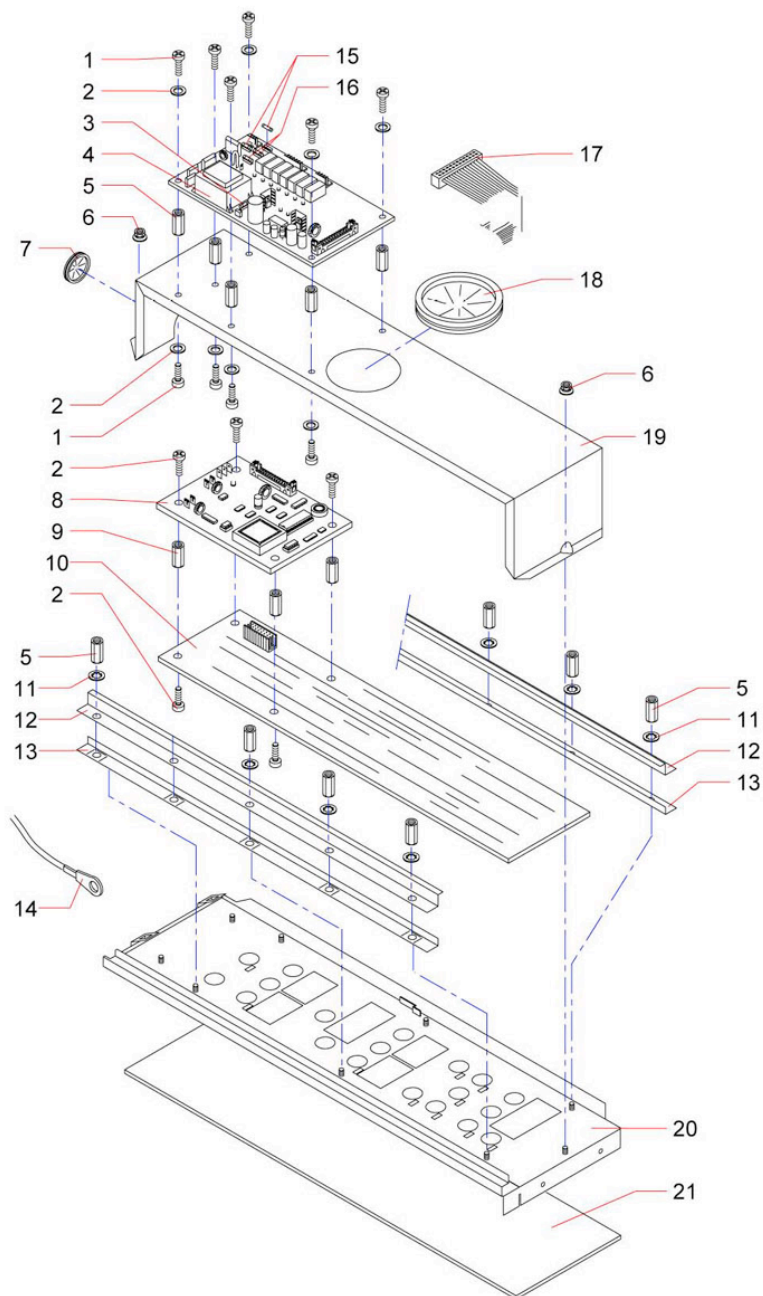
Pos.	Description	Article
1	insert rack left	380784
1	insert rack left cpl.	370290
2	grease filter	726621
2	grease filter	726648
3	fan wheel D 280X80	332380
3	fan wheel D 350X80	368687
4	washer 10,5	012602
5	serrated lock washer A 10.5	349771
6	screw M10X16	031577
7	sealing ring 10x15x1	097071
8	heating element 1,45 kW bended	585726
8	heating element 2,3 kW	576581
8.1	Mutter (in Heizkörper enthalten)	
8.2	Fächerscheibe (in Heizkörper enthalten)	
9	seal D6X10X1.5	251232
10	screw M 6X60	089958
11	screw M 3X10	014028
12	shaft sealing flange	399426
13	screw M 4X16	014117
14	washer 6,4	000582
15	screw M 6X16	251194
16	rotary shift seal	399442
17	o-ring	399434
18	protective grating	331309
19	drain sieve	249068
20	AIR BAFFLE PLATE CPL.	380768
20	air conveying plate	376779
21	counter disc	373621
22	serrated lock washer A6.4	006777
23	nut M 6	251887
24	fan motor 6/11	332410
24.1	Lüfterrad für Lüftermotor 332410 ID17 AD127 L20	678635
25	motor distance bushing	376396
26	insert rack right	380776
26	insert rack right cpl.	370274

probe, lighting, water supply cooking chamber



Pos.	Description	Article
1	STB thermostat	572683
2	nut M 4	003905
3	toothed washer 4,3	050849
4	bracket	287695
5	teflon centring bush	373079
6	hose silicone	332402
7	hose clamp	276634
8	glass plate	341673
9	lamp for baking oven	354252
10	porzellan socket	367664
11	lamp holder	371319
12	water inlet pipe	372153
13	terminal nut	361674
14	clamping ring	361682
15	screw M12X20 933	302864
15	sealing ring A16x12x2	193682
15	serrated lock washer J12.5	302856
15	Mutter M12 DIN 934 1.4301	
16	core temperature sensor	873241
16.1	screw plug	375942
16.2	seal novapress 800 F	00250*
16.3	nut R 1/4"	064580
17	protector	336394
18	seal novapress 800 F	002496
19	toothed washer 14,5	332526
20	nut R 1/4"	064580
21	teflon insert	336211
22	support	262390
23	NICRNI sensor	570621

operation panel



Pos.	Description	Article
1	screw M 4X8	001015
2	washer 4,3	001007
3	fine wire fuse 5X20 2,0AT	190756
4	power supply board	580783
5	spacer	399507
6	kombi nut w. washer	377740
7	diaphragm bushing	232963
8	CPU Pcb	639818
9	spacer	602868
10	keyboard vers. 4	639788
10	keyboard vers. 4	639796
11	toothed washer 4,3	050849
12	elbow support	399469
13	support elbow	399477
14	holding rope	376876
15	fine wire fuse 5X20 1,0AM	262498
16	fine wire fuse 5X20 6,3AT	116831
17	connecting cable	399337
18	diaphragm bushing	255351
19	electronics mounting plate	399450
20	electronics panel 611 vers.2	381020
20	electronics panel 611 vers. 1	396346
20	electronics panel 1011 vers. 2	380482
20	electronics panel 1011 vers.1	396400
21	foil f. switch panel	399515
21	switch panel	399671
21	switch panel	399698
21	foil f. switch panel	606847
21	foil f. switch panel	606839
21	foil f. switch panel	606715

Info CPU-Platine und Tastatur:

Bitte Lieferbarkeit der "CPU-Platine" und der "Tastatur kpl." im Werk anfragen!

Wenn nicht mehr lieferbar, ist ein Umbau auf die Steuerung für "ICP" erforderlich!
Siehe nachfolgende Baugruppe "Bedienblende, Platinen (Umbausatz nach ICP)!"

Eingeführt ab 3.2005

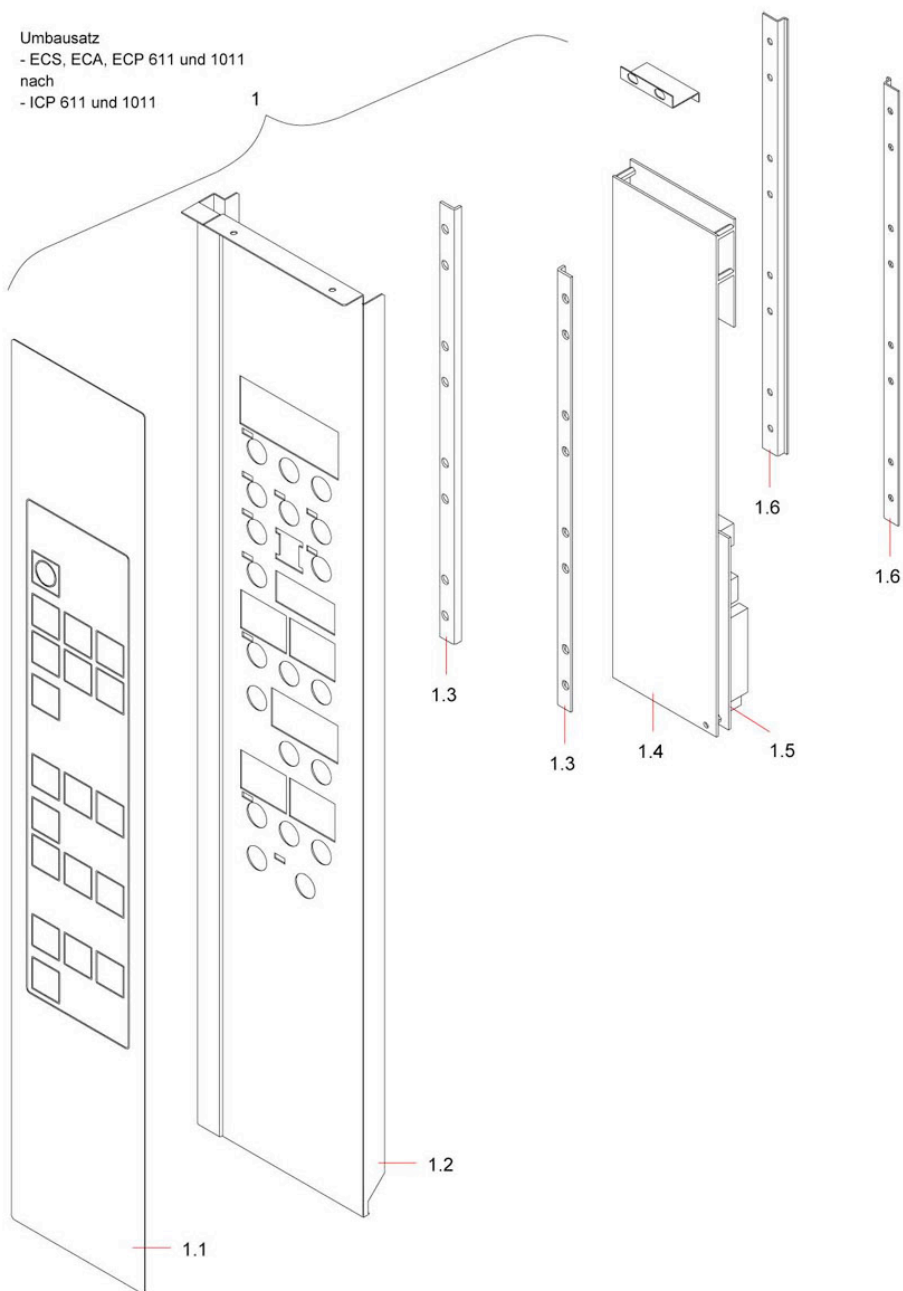
Bedienblende, Platinen (Umbausatz nach ICP)

Umbausatz

- ECS, ECA, ECP 611 und 1011

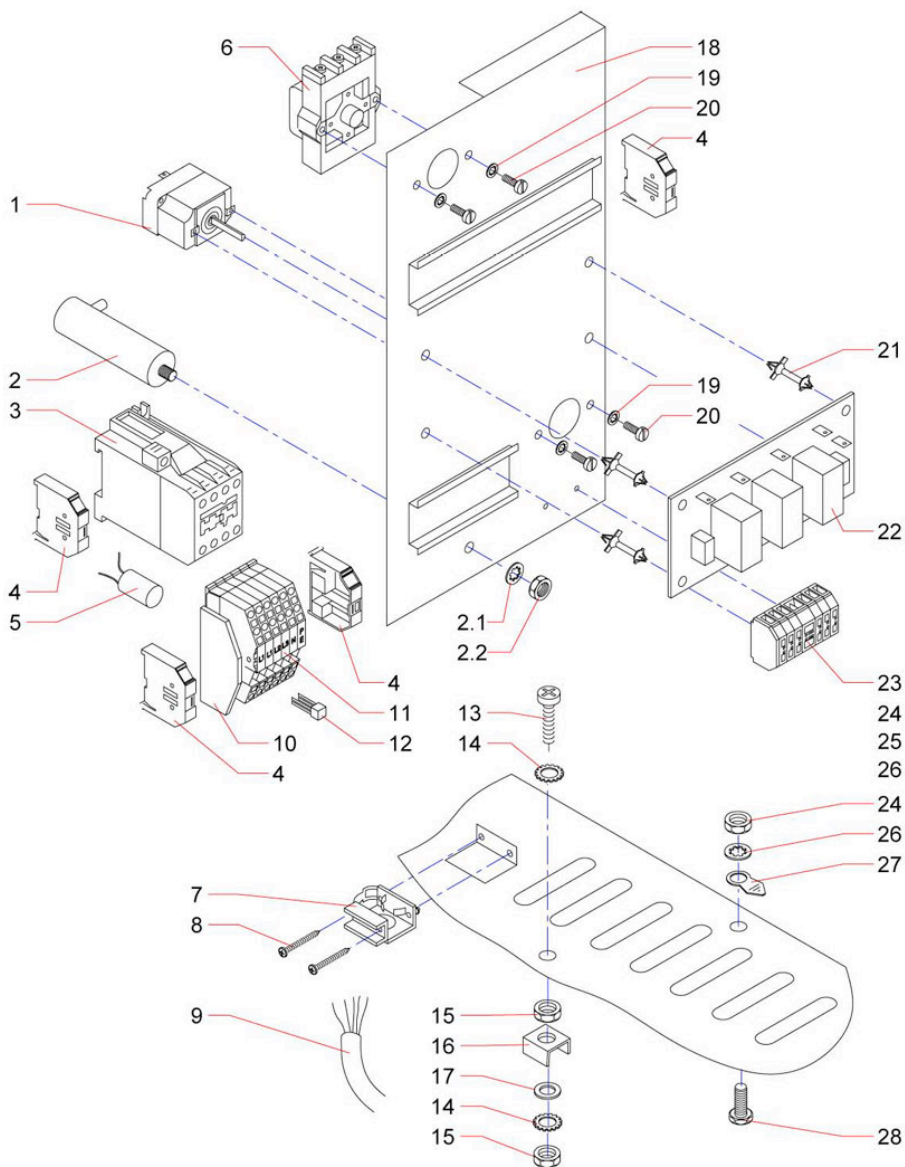
nach

- ICP 611 und 1011



Pos.	Description	Article
1	Conversion kit ECS, ECA, ECP at ICP 611	893471
1	Conversion kit ECS, ECA, ECP at ICP 1011	893498
1.1	control key board	
1.2	control panel	
1.3	Mounting band key board form L	578754
1.4	Control key board	580740
1.5	CPU board ICP+HACCP	580759
1.6	Assembly rail keyboard z-form	578738
	Gebrauchsanweisung ICP	
	Serviceanleitung ICP	
	Umbauanleitung	
	Schaltpläne	

electric parts



Pos.	Description	Article
1	thermostat 250 1pol.	091634
2	capacitor	292753
2.1	Fächerscheibe J8,4 DIN 6798 (in 292753)	
2.2	Mutter M8 DIN 439 (in 292753 enthalten)	
3	contactor	576611
4	plastic end bracket	337676
5	interference supression capacitor	338419
6	STB thermostat	572683
7	clamp	248002
8	sheet metal screw	248703
9	mains cable	041580
9	mains cable	311847
10	Abschlußplatte	
11	Netzanschlußklemme	
12	Querbrücke	
13	screw M 6X20	010731
14	serrated lock washer A6,4	006777
15	nut M 6	251887
16	terminal bracket	223697
17	washer 6,4	004014
18	electro mounting sheet	399396
19	toothed washer 4,3	050849
20	screw M 4X8	001015
21	spacer bracket 15,9	167223
22	PC-board	089419
23	clamping ledge	352241
24	nut M 5	252867
25	toothed washer 5,3	304816
26	washer 5,3	003980
27	earth sign	254436
28	screw M 5X16	231657
	cable harness	399485
	cable harness	399493