

Ersatzteilkatalog

Spare parts list

PALUX Injection Heißluft-Dämpfer

GXA / GXB / GXC - 611, 1011 und 2011



Dieser Ersatzteilkatalog ist gültig

- für Geräte ab Baujahr 2002

Typenübersicht**PALUX Injection Heißluft-Dämpfer****GXA 611**

754676, 754595, 758736, 759201

GXB 611

754684, 754609, 757365, 757373

GXC 611

754706, 754692, 757381, 757403

GXA 1011

754714, 754617, 758833, 759651

GXB 1011

754757, 754773, 757411, 757438

GXC 1011

754781, 754722, 757446, 757454

GXB 2011

754668, 757462

GXC 2011

757314, 757470

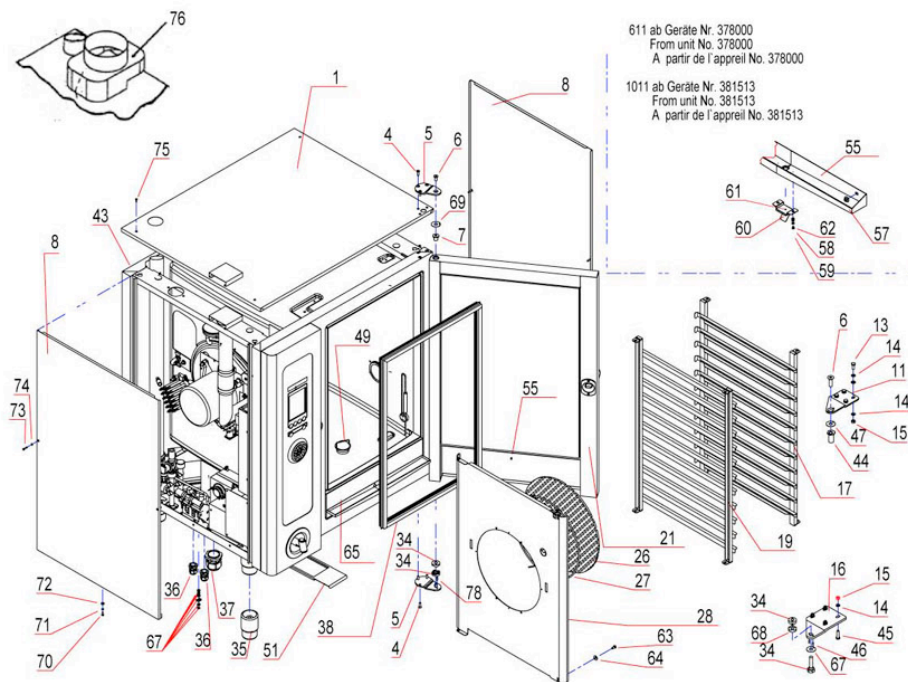
GXC 611 Gas

754749, 759678, 759686, 759694

GXC 1011 Gas

754730, 757292, 759708, 759716

housing



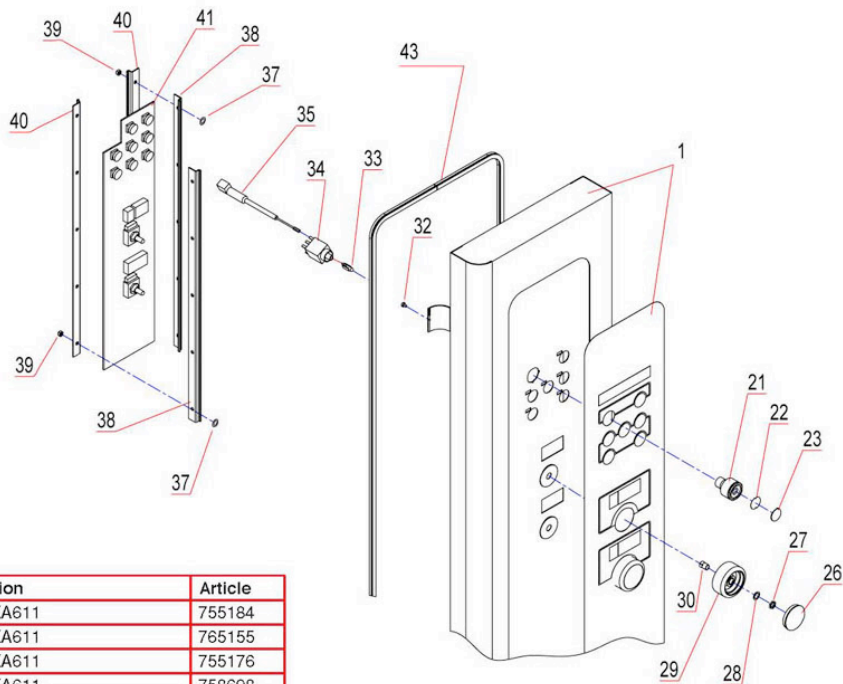
611 ab Geräte Nr. 378000
From unit No. 378000
A partir de l'appareil No. 378000

1011 ab Geräte Nr. 381513
From unit No. 381513
A partir de l'appareil No. 381513

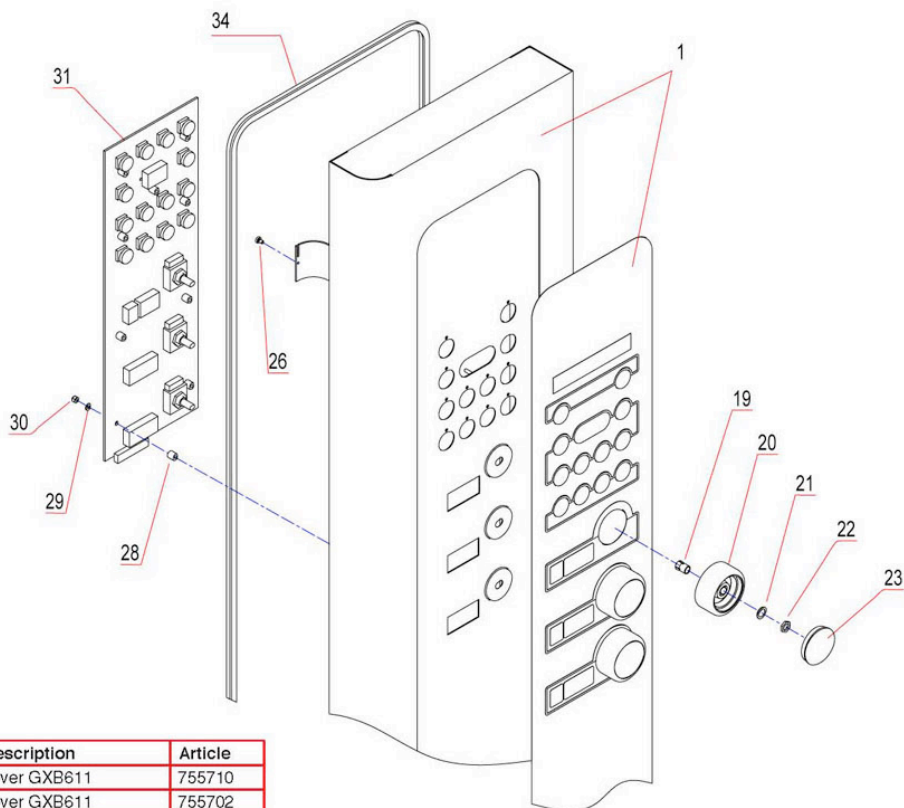
1011 Pos. 26 entfällt ab Geräte Nr. 381339
Part No. 26 dropped from unit No. 381339
Pièce No. 26 supprimées à partir de l'appareil No. 381339

Pos.	Description	Article
1	cover f. casing 611 /1011	741604
1	cover f. casing 611 /1012	740942
1	cover f. casing 2011	741825
4	screw M6 x 20	741175
5	door bearing bottom 611 1011	768413
6	screw M 8X20	209791
7	cam D2000	741434
8	side section	741159
8	side section	741655
8	SEITENDECKEL 2011 rechts	
8	SEITENDECKEL 2011 links	
8	motor shaft	558427
11	upper hinge plate	745936
13	Schraube M8x20 1.4301 ISO 4017	
14	serrated lock washer A8.4	012564
15	nut M 8	254177
16	Scharnierplatte unten kpl. 2011 1221 2021	
17	insert rack 611 right	740292
17	insert rack 1011 right	740357
19	insert rack left 611	740306
19	insert rack left 1011	740365
21	door cpl. 611	752002
21	door cpl. 611	752010
21	door cpl. 1011 right stop	752169
21	door cpl. 1011 left stop	752371
21	door cpl. 2011	755567
26	grease filter	760749
27	protective grating	377791
28	air conveying plate	743291
28	air conveying plate	740438
28	air conveying plate	743305
28	air conveying plate	740837
28	air conveying plate	746029
34	grid hand	385654
35	adjustable foot round	744824
36	coupling	580465
37	coupling	658316
38	door seal silicone frame 611	742368
38	door seal silicone frame 1011	742376
38	door seal silicone frame 2011	742384
43	RUECKWAND	
44	bearing f. cam	564680
45	Sechskant-Schraube M8x30 ISO 4017	
46	cylinder pin	553344
47	safety sheet	382701
49	drain sieve	670375
49	drain sieve	670383
51	filter ventilating shaft	751782
55	drip groove	742198
57	washer nut M4	553395
58	washer 3,2	000965
59	screw M 3 X 5 DIN 84	003913
60	cap drip tray	744670
61	silicone seal	757926
62	Druckfeder Abtropfrinne	

Pos.	Description	Article
63	Sechskant-Schraube M6x12 1.4301 ISO 4017	
64	washer 6,4	000582
65	front cover 611 1011	745693
67	VBG compensation of potential	752304
68	grid hand	772453
69	lock washer	758868
70	Flachrundschraube M8x16 DIN 603	
71	spring lock washer A4	001023
72	washer 4,3	026999
73	Linsensenkschraube M4x20 1.4301 DIN 966	
74	serrated lock washer V4,3	587710
75	screw M 4X12	039411
76	Strömungssicherung	
78	cylinder pin	757209

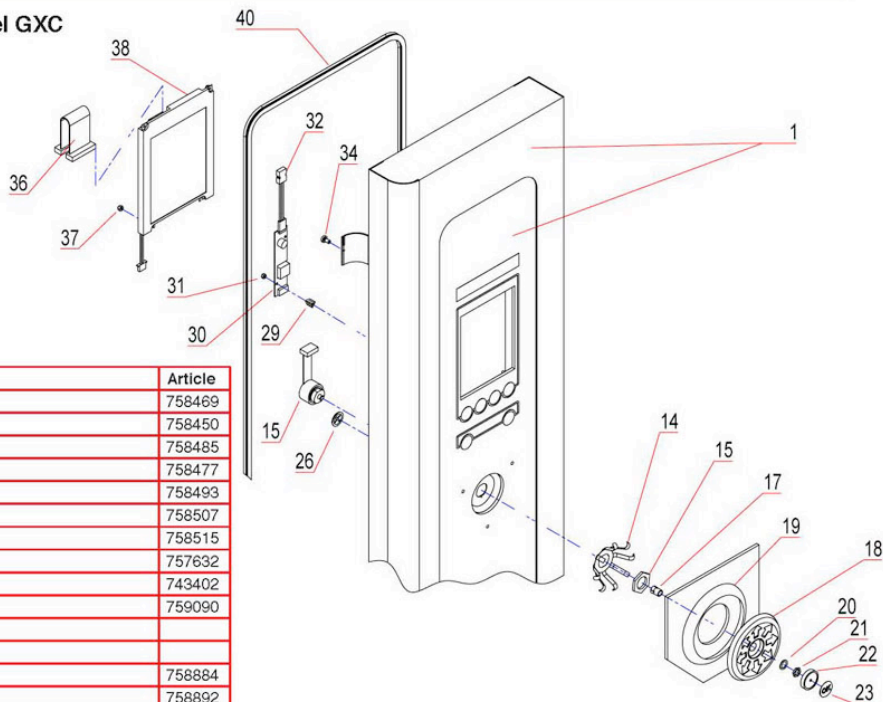
operation panel GXA


Pos.	Description	Article
1	cover GXA611	755184
1	cover GXA611	765155
1	cover GXA611	755176
1	cover GXA611	758698
1	cover GXA1011	755222
1	cover GXA611	766054
1	cover GXA1011	755214
1	cover GXA1011	758701
21	activator	590010
22	inser sign ON / OFF	743720
23	key cover	590037
26	lid small silver D37mm	748781
27	nut	758892
28	washer	758884
29	turn button	743690
30	clamping plier	748978
32	screw M 3 X 5 DIN 84	003913
33	filament lamp	581488
34	contactor	590045
35	in series capacitor	581496
37	o-ring	013471
38	support elbow	399760
39	nut M4 self securing	749699
40	Montageschiene Tastatur Z-Form	
41	control keypad	581259
43	sealing frame 611	742295
43	sealing frame 1011	742309
43	sealing frame 2011	742317

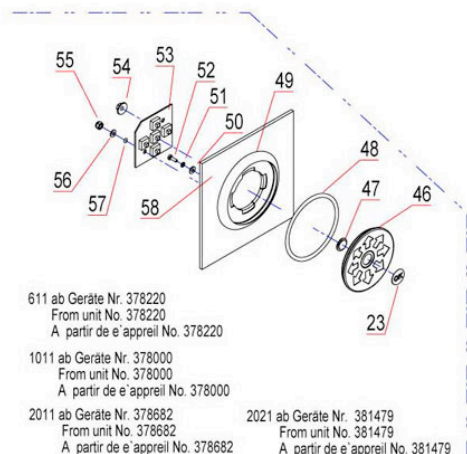
operation panel GXB


Pos.	Description	Article
1	cover GXB611	755710
1	cover GXB611	755702
1	cover GXB1011	754455
1	cover GXB1011	753882
1	cover GXB2011	757543
1	cover GXB 1221	757578
1	cover GXB2021	757594
19	clamping plier	748978
20	turn button	743690
21	washer	758884
22	nut	758892
23	lid small silver D37mm	748781
26	screw M 3 X 5 DIN 84	003913
28	distance bush	527556
29	washer	357189
30	nut M 3 self securing	749842
31	display	742465
34	sealing frame 611	742295
34	sealing frame 1011	742309
34	sealing frame 2011	742317
34	sealing frame 1221	742325
34	sealing frame 2021	742333

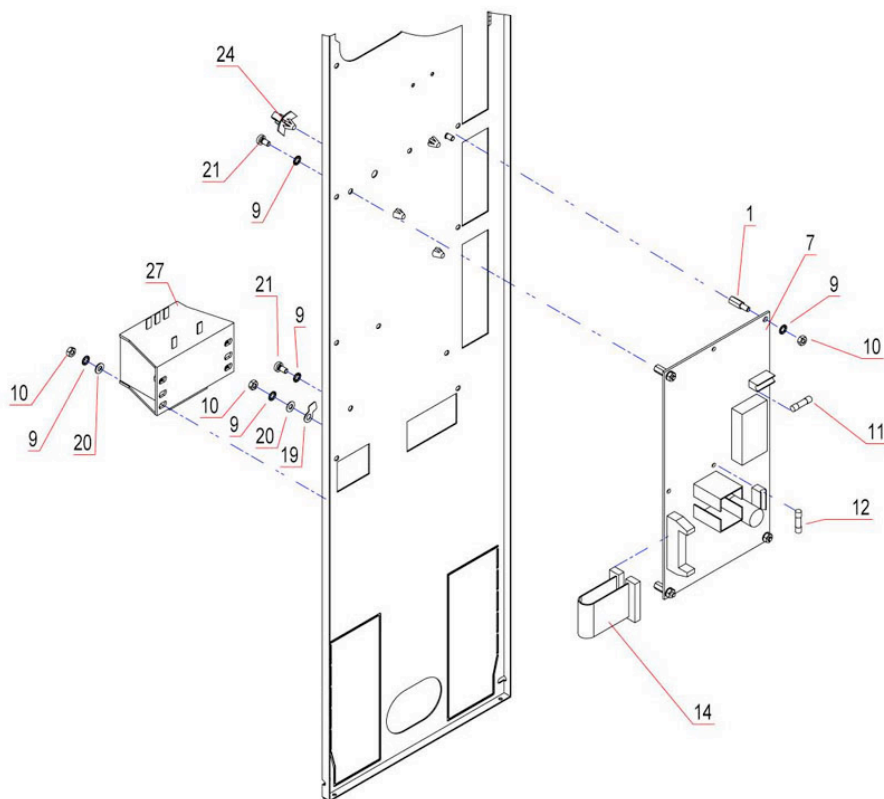
operation panel GXC



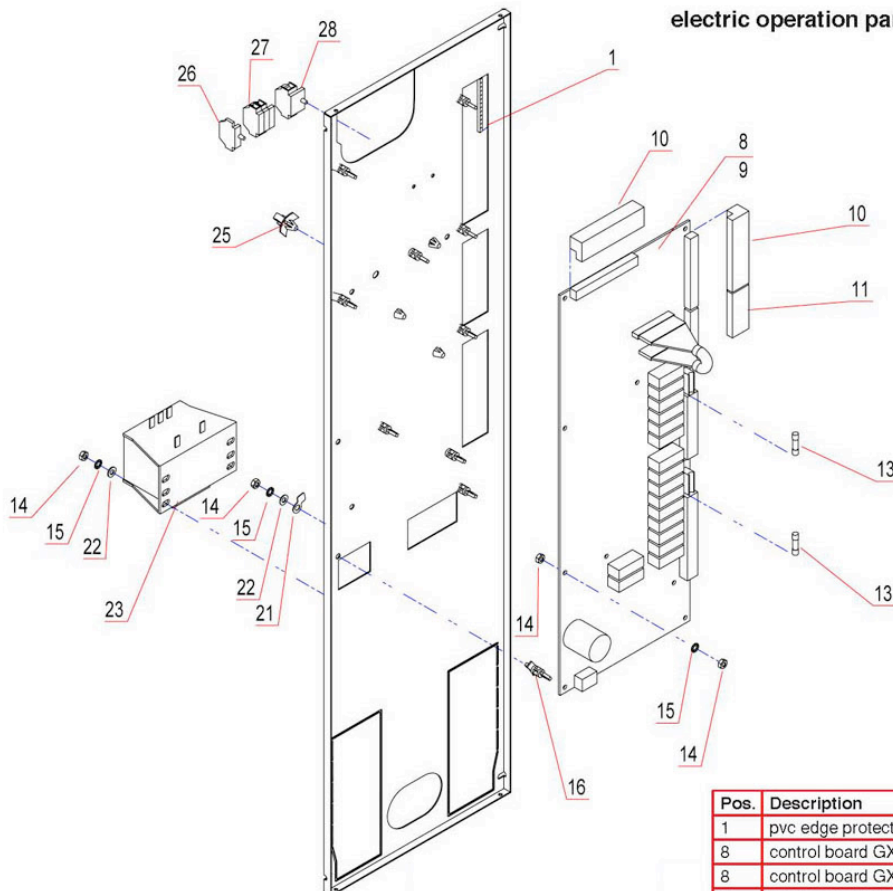
Pos.	Description	Article
1	cover GXC611	758469
1	cover GXC611	758450
1	cover GXC1011 L	758485
1	cover GXC1011 R	758477
1	cover GXC2021	758493
1	cover GXC1221	758507
1	cover GXC2021	758515
14	shaped spring	757632
15	joystick encoder	743402
17	clamping plier	759090
18	Bedienwippe	
19	Wippenring	
20	washer	758884
21	nut	758892
22	Deckel Bedienwippe	
23	adhesive foil	757667
26	screw M 3X8	010383
29	Distanzbuchse dreieckig	
30	inverter	749923
31	Selbstsichernde Mutter M 2,5 DIN 985 V2A	
32	supply inverter	748323
34	screw M 3 X 5 DIN 84	003913
36	connecting cable	749915
37	nut M 3 self securing	749842
38	display GXC 611-2021	742457
40	sealing frame 611	742295
40	sealing frame 1011	742309
40	sealing frame 2011	742317
40	sealing frame 1221	742325
40	sealing frame 2021	742333
46	lever	768898
47	middle key	768502
48	sealing ring	768510
49	rocker ring	768499
50	washer 3,2	000965
51	spring lock washer A3	000418
52	Zahnscheibe J3,2 1.4301	050822
53	control panel	748277
54	washer nut M4	553395
55	nut M4 self securing	749699
56	washer	303135
57	o-ring	013455
58	support frame	760633
	Bausatz Abdichtung Sensortasten	874590



electric operation panel GXA



Pos.	Description	Article
1	spacer	603228
7	power supply board	758159
9	toothed washer 4,3	050849
10	nut M 4	003905
11	fine wire fuse 5X20 6,3AT	116831
12	fine wire fuse 5X20 2,0AT	190756
12	fine wire fuse 5X20 1,0AM	262498
14	connecting cable	399337
19	earth label	553182
20	washer 4,3	001007
21	screw M 4X8	001015
24	armature clamp detachable	388017
27	transformer	742775

electric operation panel GXB, GXC


Pos.	Description	Article
1	pvc edge protection	758590
8	control board GXA (ab 2004)	898104
8	control board GXB	898198
9	control board GXC	898120
10	plug	749869
11	plug	749850
13	fine wire fuse 5X20 4AT	307963
14	nut M 4	003905
15	toothed washer 4,3	050849
16	spacer	749834
21	earth label	553182
22	washer 4,3	001007
23	transformer	742775
25	armature clamp detachable	388017
26	end plate	570907
27	clamp	553549
28	clamp	571075
	Nullmodemkabel 9-polig RS232 (für Datenübertragung GXC/PC)	596132

Info zur Steuerbaugruppe GXC
Sprache

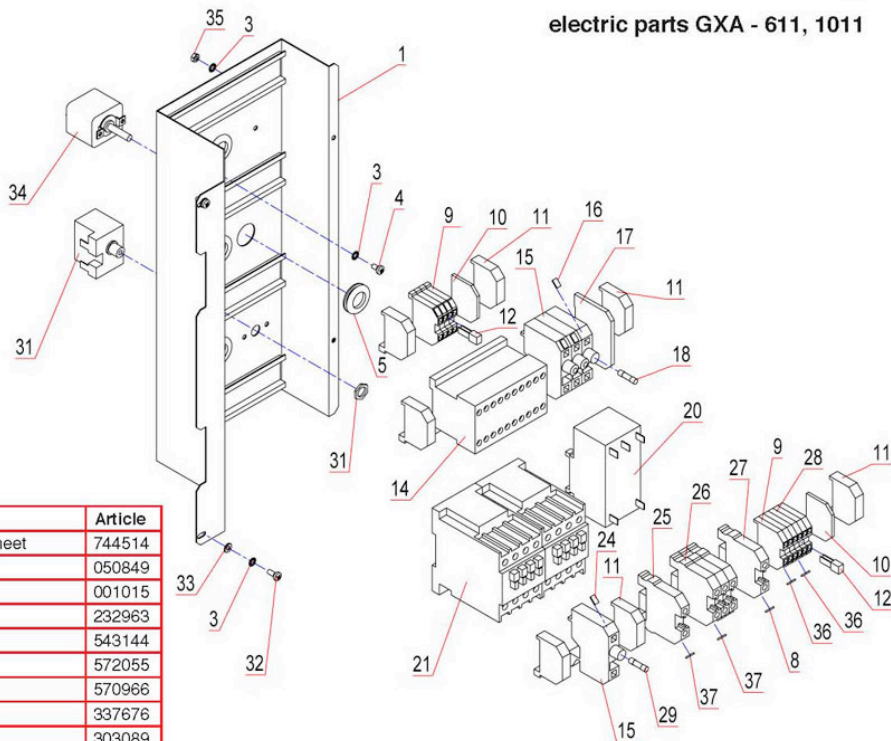
Die Bedienoberfläche läßt sich am Gerät in die Sprachen GB, FR, IT, NL umschalten. Dies trifft aber nicht auf die enthaltenen Kochprogramme zu.

In dieser Steuerbaugruppe sind die Kochprogramme in deutscher Sprache geladen.

Werden anderssprachige Kochprogramme benötigt, muss die entsprechende Sprache vor der Auslieferung geladen werden!

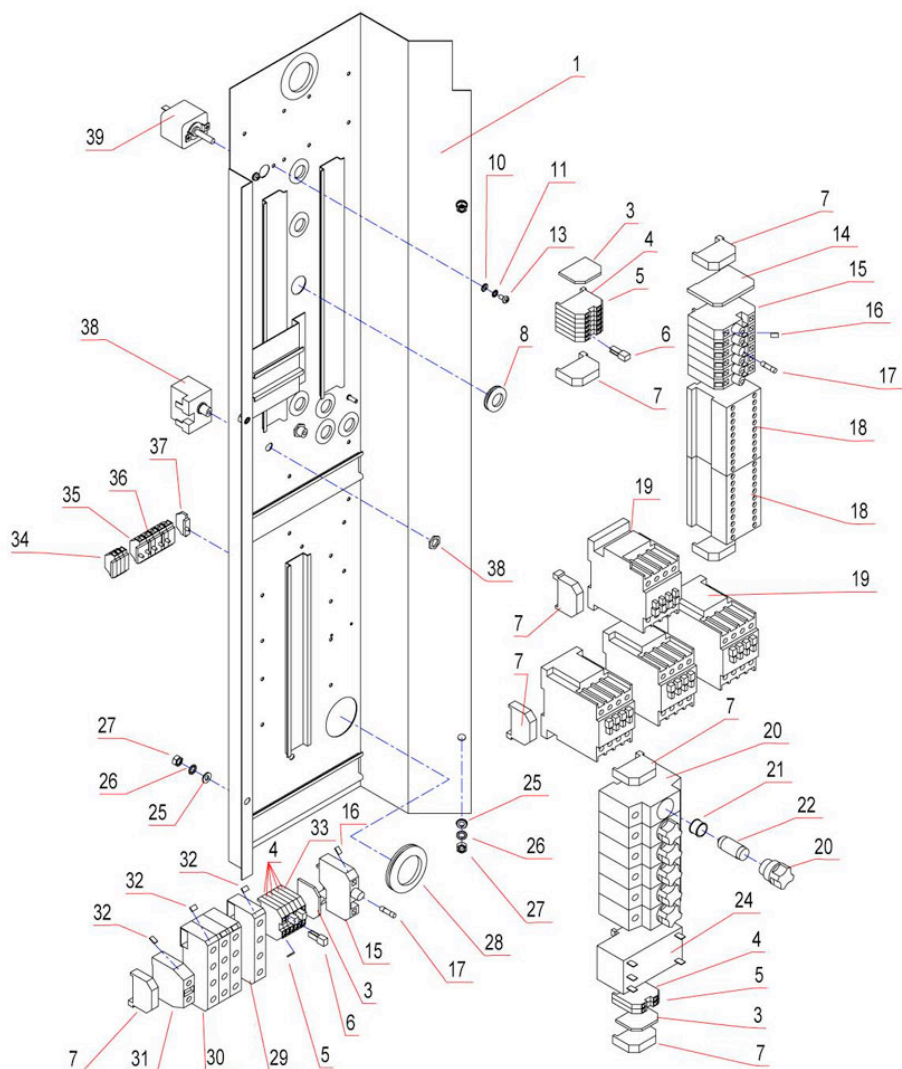
Nach dem Einbau einer Steuerbaugruppe

Nach dem Einbau einer Steuerbaugruppe GXC müssen in der Steuerung gerätespezifische Einstellungen durch den PALUX-Kundendienst vorgenommen werden.

electric parts GXA - 611, 1011


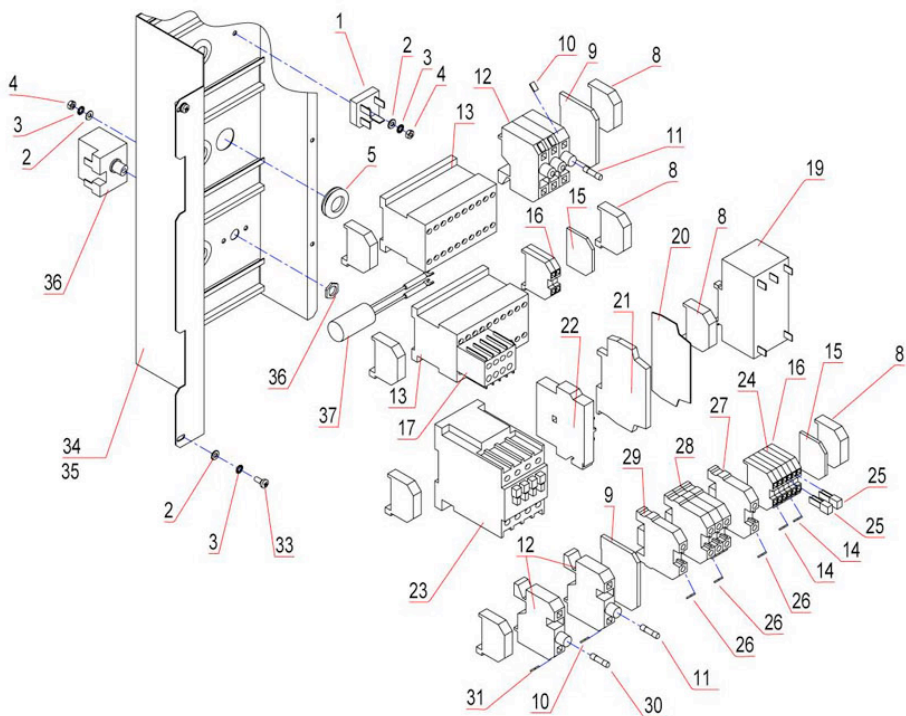
Pos.	Description	Article
1	electro mounting sheet	744514
3	toothed washer 4,3	050849
4	screw M 4X8	001015
5	diaphragm bushing	232963
8	identification plate	543144
9	clamp	572055
10	end plate	570966
11	plastic end bracket	337676
12	t- bridge	303089
14	compact reversing contactor	580481
15	fuse terminal	326941
16	identification plate 10A	568155
17	end and distance plate	327514
18	fine wire fuse 5X20 10A	578975
20	interference suppression filter	742767
21	contactor	523895
24	identification plate 2A	580511
25	clamp	572977
26	terminal block	388769
27	clamp	572985
28	clamp	571067
29	fine wire fuse 5X20 2,0AT	190756
31	STB 1 pol. 360	504602
32	screw M 4X10	010502
33	washer 4,3	001007
34	thermostat 250 1pol.	091634
35	nut M 4	003905
36	identification plate	580546
37	identification plate	543144
	cable harness control unit	753483
	cable harness control unit	755044
	cable harness lighting	753629
	cable harness	753637
	connection cable	553271
	connection cable	570745

electric parts GXA - 2011



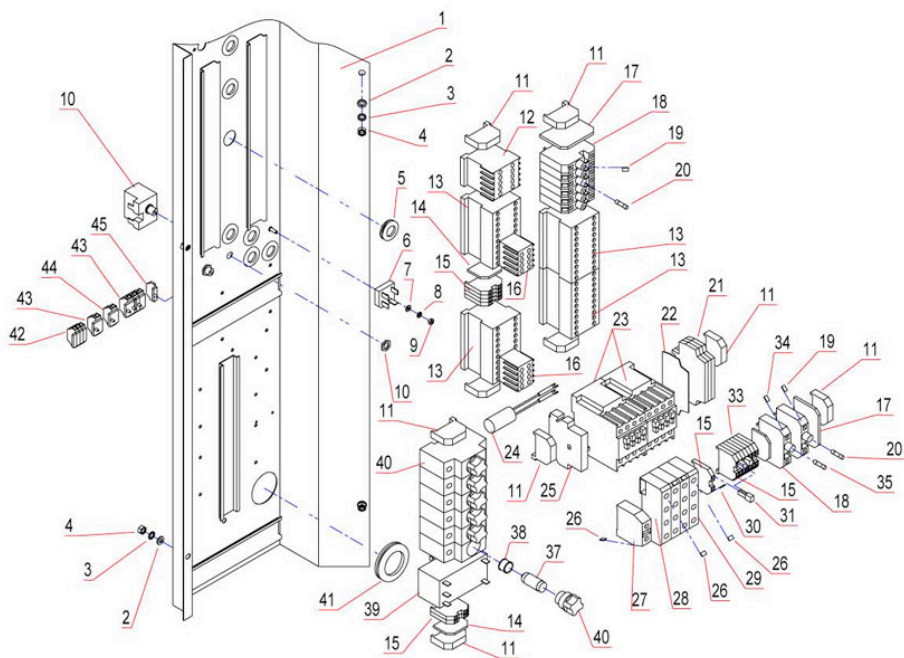
Pos.	Description	Article
1	Elektromontageblech 2011	
3	end plate	570966
4	clamp	572055
5	identification plate	580546
6	t- bridge	303089
7	plastic end bracket	337676
8	diaphragm bushing	232963
10	washer 4,3	001007
11	toothed washer 4,3	050849
13	screw M 4X8	001015
14	end and distance plate	327514
15	fuse terminal	326941
16	identification plate 10A	568155
17	fine wire fuse 5X20 10A	578975
18	compact reversing contactor	580481
19	contactor	523895
20	safety element	751847
21	fitting insert	751855
22	fuse 35A	751863
24	interference suppression filter	742767
25	washer 6,4	004014
26	serrated lock washer A6,4	006777
27	nut M 6	251887
28	diaphragm bushing	255351
29	connection clamp	751898
30	connection clamp	751871
31	lead in clamp	658227
32	identification plate	543144
33	clamp	571067
34	clamp	553549
35	clamp	571075
36	Klemme 4-Leiter blau mit Rastfuß	
37	end plate	570907
38	STB 1 pol. 360	504602
39	thermostat 250 1pol.	091634
	label external voltage	543152
	cable harness	753645
	cable harness control unit	755087

electric parts GXB, GXC - 611, 1011



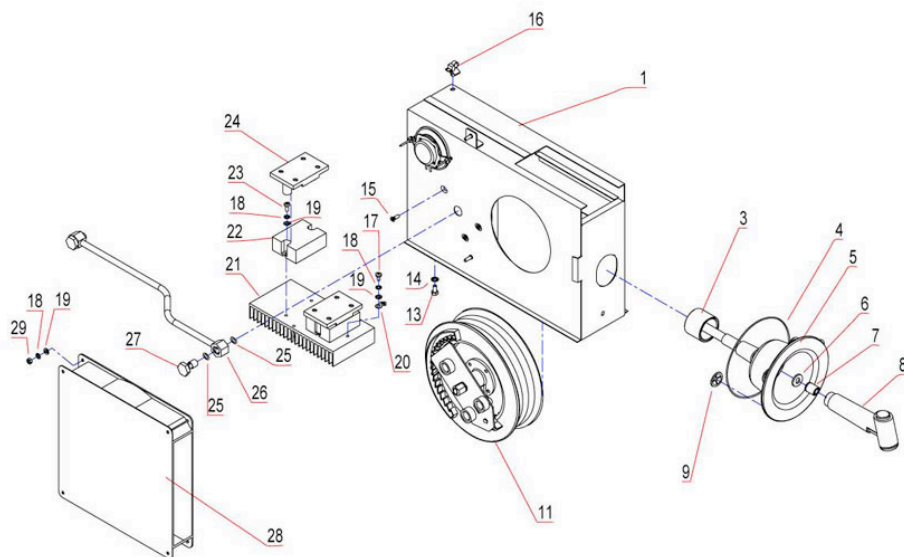
Pos.	Description	Article
1	bridge rectifier	570532
2	washer 4,3	001007
3	toothed washer 4,3	050849
4	nut M 4	003905
5	diaphragm bushing	232963
8	plastic end bracket	337676
9	end and distance plate	327514
10	identification plate 10A	568155
11	fine wire fuse 5X20 10A	578975
12	fuse terminal	326941
13	compact reversing contactor	580481
14	identification plate	580546
15	end plate	570966
16	clamp	572055
17	auxiliary switch	751790
19	interference suppression filter	742767
20	end and distance plate	752452
21	auxiliary relay 230V	742813
22	auxiliary switch	751839
23	contactor	523895
24	clamp	571067
25	t- bridge	303089
26	identification plate	543144
27	clamp	572985
28	terminal block	388769
29	clamp	572977
30	fine wire fuse 5X20 4AT	307963
33	screw M 4X10	010502
34	electro mounting sheet	744514
35	Haltewinkel f. Magnet 2021	
36	STB 1 pol. 360	504602
37	interference suppression capacitor	338419
	connection cable	553271
	cable harness PCB	753491
	cable harness control unit	753548
	cable harness low voltage	753688
	cable harness lighting	753629
	cable harness	753637
	cable harness sensor	753947

electric parts GXB, GXC - 2011



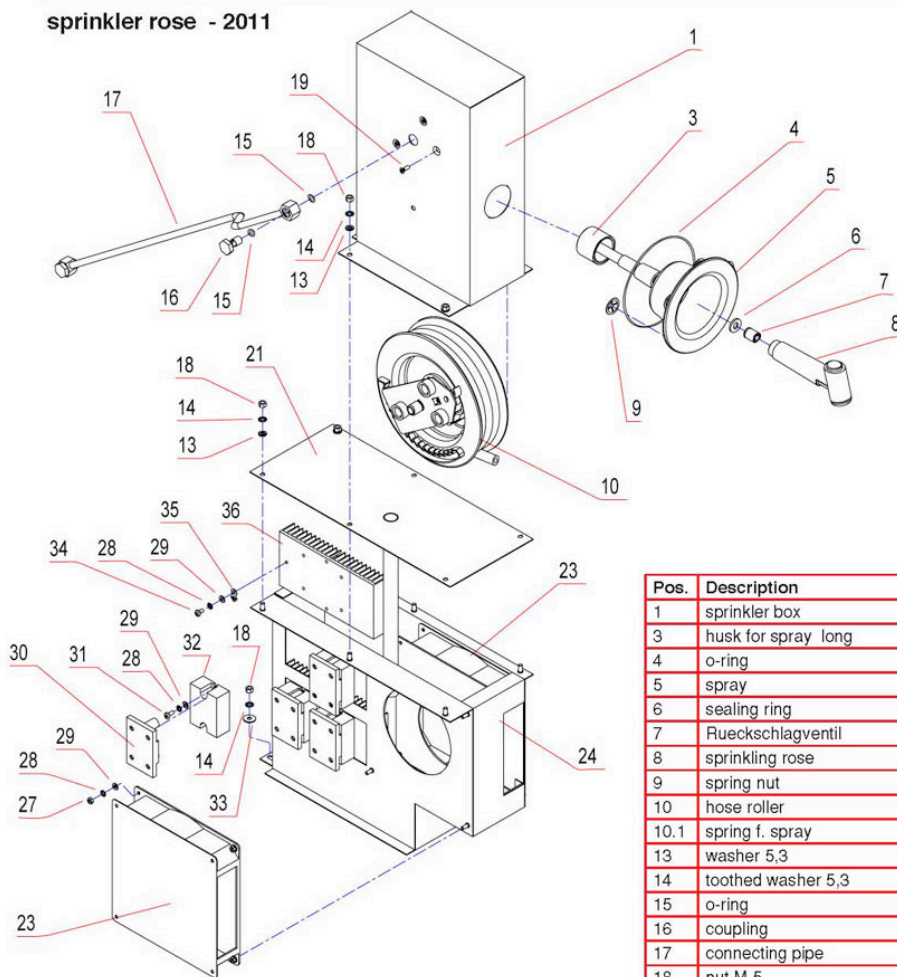
Pos.	Description	Article
1	Elektromontageblech 2011	
2	washer 6,4	004014
3	serrated lock washer A6.4	006777
4	nut M 6	251887
5	diaphragm bushing	232963
6	bridge rectifier	570532
7	washer 4,3	001007
8	toothed washer 4,3	050849
9	nut M 4	003905
10	STB 1 pol. 360	504602
11	plastic end bracket	337676
12	auxiliary contactor	752177
13	compact reversing contactor	580481
14	end plate	570966
15	clamp	572055
16	auxiliary switch	751790
17	end and distance plate	327514
18	fuse terminal	326941
19	identification plate 10A	568155
20	fine wire fuse 5X20 10A	578975
21	auxiliary relay 230V	742813
22	end and distance plate	752452
23	contactor	523895
24	interference suppression capacitor	338419
25	auxiliary switch	751839
26	identification plate	543144
27	lead in clamp	658227
28	connection clamp	751871
29	connection clamp	751898
30	identification plate	580546
31	t- bridge	303089
33	clamp	571067
34	identification plate 2A	580511
35	fine wire fuse 5X20 2,0AT	190756
37	fuse 35A	751863
38	fitting insert	751855
39	interference suppression filter	742767
40	safety element	751847
41	diaphragm bushing	255351
42	clamp	553549
43	clamp	571075
44	Klemme 4-Leiter blau mit Rastfuß	
45	end plate	570907
	cable harness PCB	753505
	cable harness low voltage	753696
	cable harness	753645

sprinkler rose - 611, 1011

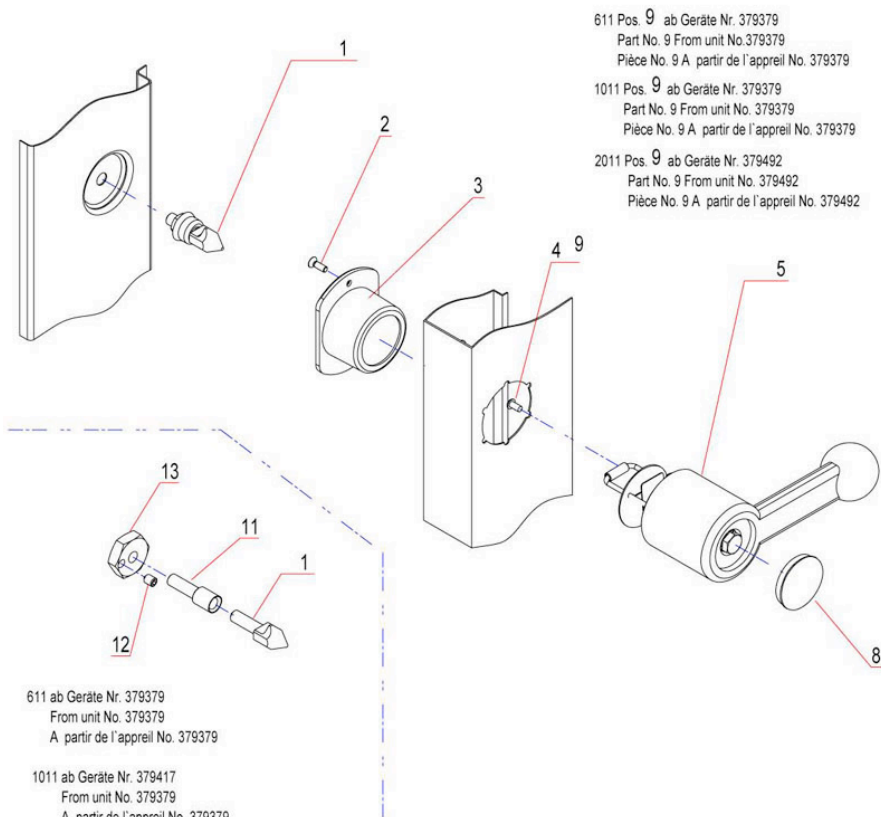


Pos.	Description	Article
1	sprinkler box	744719
1	sprinkler box	744778
3	husk for spray	753238
4	o-ring	581097
5	spray	581070
6	sealing ring	585424
7	Rueckschlagventil	
8	sprinkling rose	587583
9	spring nut	581089
11	hose roller	753181
11.1	spring f. spray	516465
13	screw M 5X10	003743
14	toothed washer 5,3	304816
15	Senkschraube DIN 965 M6x12 V2A	
16	armature clamp detachable	388017
17	screw M 4X8	001015
18	toothed washer 4,3	050849
19	washer 4,3	001007
20	earth label	553182
21	heat sink	742732
22	contactor	752401
23	screw M 4X10	010502
24	Abdeckung Relais	
25	o-ring	013471
26	connecting pipe	753246
27	coupling	172405
28	axial fan	752274
29	nut M 4	003905

sprinkler rose - 2011



Pos.	Description	Article
1	sprinkler box	755419
3	husk for spray long	759910
4	o-ring	581097
5	spray	581070
6	sealing ring	585424
7	Rueckschlagventil	
8	sprinkling rose	587583
9	spring nut	581089
10	hose roller	753289
10.1	spring f. spray	516465
13	washer 5,3	003980
14	toothed washer 5,3	304816
15	o-ring	013471
16	coupling	172405
17	connecting pipe	753300
18	nut M 5	252867
19	Senkschraube DIN 965 M6x12 V2A	
20	nut M 14x1,5	280356
21	cover	755443
23	axial fan	752525
24	air shaft	755389
27	nut M 4	003905
28	toothed washer 4,3	050849
29	washer 4,3	001007
30	Abdeckung Relais	
31	screw M 4X10	010502
32	contactor	752401
33	washer 5,3	082155
34	screw M 4X8	001015
35	earth label	553182
36	heat sink	742732

door lock


611 Pos. 9 ab Geräte Nr. 379379
Part No. 9 From unit No.379379
Pièce No. 9 A partir de l'appareil No. 379379

1011 Pos. 9 ab Geräte Nr. 379379
Part No. 9 From unit No. 379379
Pièce No. 9 A partir de l'appareil No. 379379

2011 Pos. 9 ab Geräte Nr. 379492
Part No. 9 From unit No. 379492
Pièce No. 9 A partir de l'appareil No. 379492

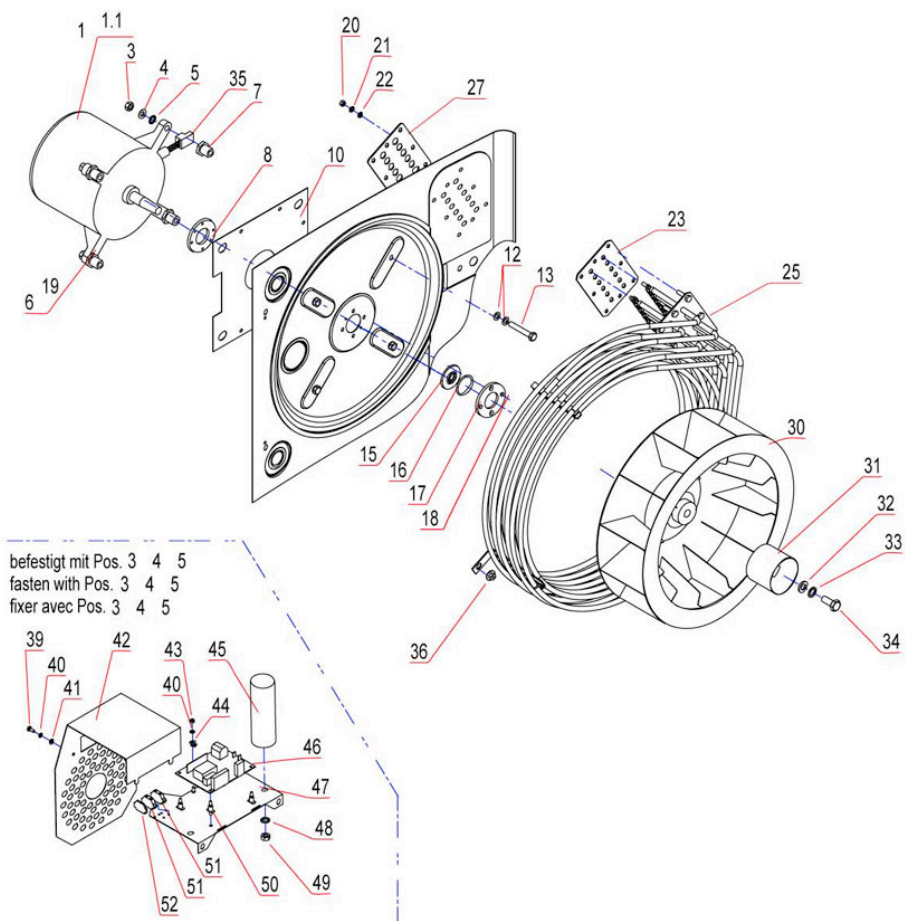
611 ab Geräte Nr. 379379
From unit No. 379379
A partir de l'appareil No. 379379

1011 ab Geräte Nr. 379417
From unit No. 379379
A partir de l'appareil No. 379379

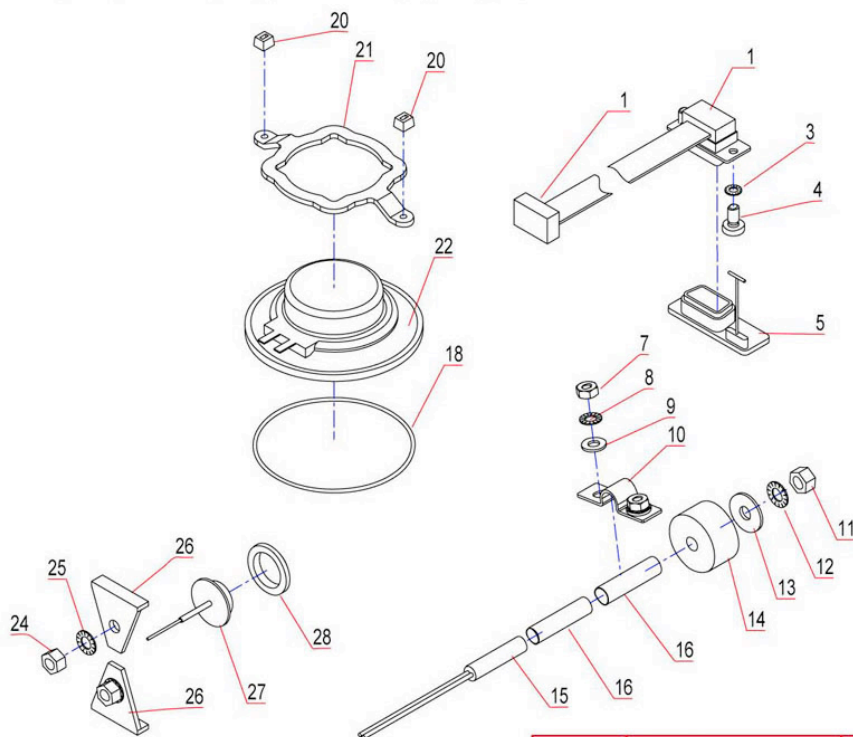
2011 ab Geräte Nr. 379492
From unit No.379492
A partir de l'appareil No. 379492

Pos.	Description	Article
1	Z-block	758264
1	Z-block	758272
1	Z-block	747998
2	screw M 4X12	039411
3	sleeve door lock	775061
4	cup screw	758531
5	handle door lock blue 611 1011 2011 right	748765
5	handle door lock blue 611 1011 left	758388
8	lid small silver D37mm	748781
9	Zylinderschraube M6x20 1.4301 DIN 6912	
11	extension	766844
12	threaded pin M6x8	768464
13	securing nut	767476

fan

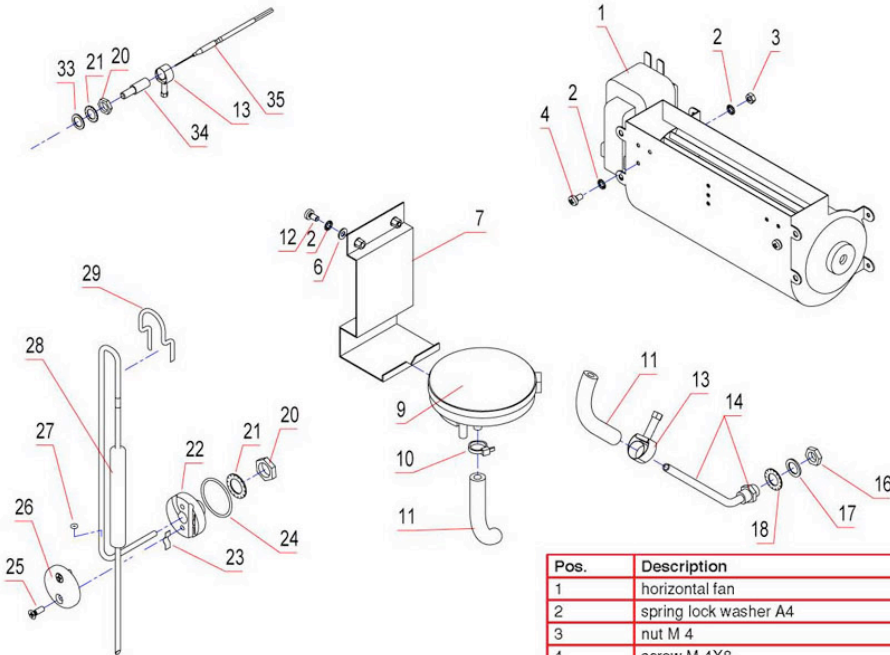


Pos.	Description	Article
1	motor	748501
1	motor L9	742740
1	motor L9	765945
1	Motor 3x230V UL (GXB GXC 611 1011 2011)	767409
1.1	revolution sensor	782939
3	nut M 8	254177
4	washer 8,4	001925
5	serrated lock washer A8.4	012564
6	cooling wheel	782947
7	motor distance bushing	743615
8	counter disc	373621
10	motor isolation plate	747785
12	copper sealing	570826
13	screw M 8x50	749389
14	screw M 3X8	010383
15	rotary shift seal	399442
16	o-ring	581410
17	shaft sealing flange	580600
18	screw M 4x16	749338
19	Gewindestift M4x8 1.4301 DIN 914	
20	nut M 5	252867
21	toothed washer 5,3	304816
22	washer 5,3	003980
23	seal heating element 10-2011/ 12-2021	749451
23	seal heating element 611	749427
25	heating element 10,5 kW	742414
25	heating element 21,6 kW	742422
27	counter flange heating element 1011	757993
27	counter flange heating element 611	757985
30	fan motor 611/1011/2011	743372
31	distributor husk	382477
32	washer 10,5	012602
33	serrated lock washer A 10.5	349771
34	screw M 10 x25	749397
35	plug	749281
36	washer nut M6	614742
39	screw M 4X10	010502
40	washer 6,4	000582
41	washer 4,3	001007
42	cover	768391
43	nut M 4	003905
44	earth label	553182
45	capacitor	765678
46	gas firing machine	743992
47	electro sheet gas automat	765961
48	serrated lock washer A8.4	012564
49	nut M 8	254177
50	spacer	749834
51	clamp	553549
52	end plate	570907
	bridge for heating element	755761
	bridge for heating element	755788
	bridge for heating element	755796
	cable harness	753556
	cable harness	753564
	cable harness	753572
	cable harness	753580
	cable harness	753599

safety temp. limiter, magnetic switch, lighting, speaker


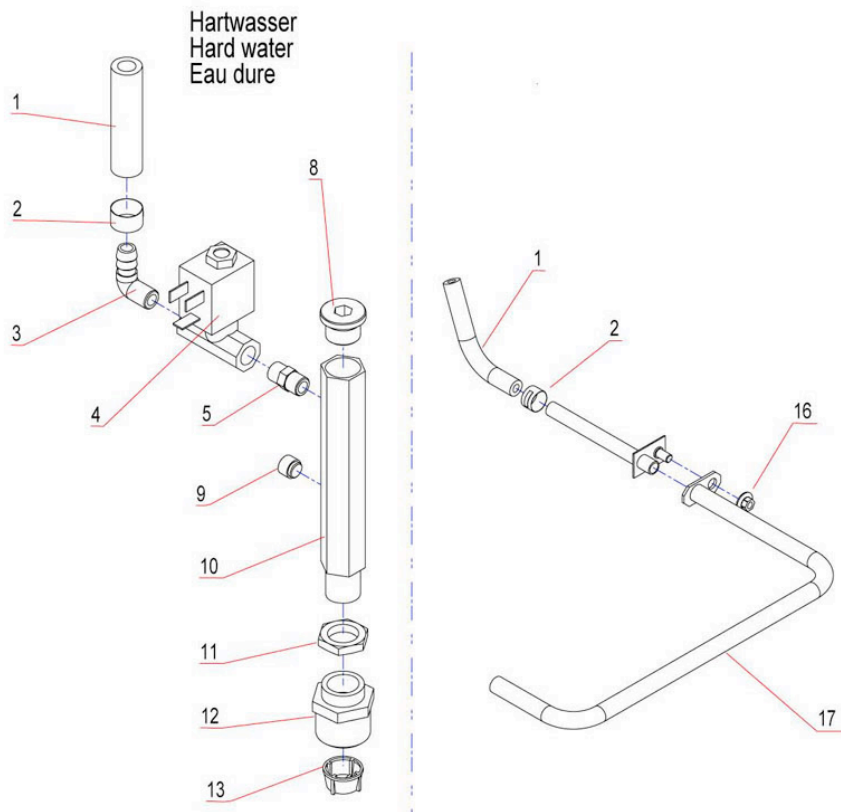
Pos.	Description	Article
1	connecting cable	759902
1	connecting cable	769436
3	toothed washer 3,2	050822
4	screw M 4X8	001015
5	cover	581224
7	nut M 4	003905
8	toothed washer 4,3	050849
9	washer 4,3	001007
10	conduit clip	329525
11	nut M 5	252867
12	toothed washer 5,3	304816
13	washer 5,3	082155
14	magnet f. door limit switch	372994
15	magnetic switch	581038
16	cablе bushing	208094
18	o-ring	759953
20	Kabelbinder natur 160x2,5	
21	bracket f. speaker	758582
22	speaker	749877
24	nut M 5	252867
25	toothed washer 5,3	304816
26	bracket	287695
27	STB 1 pol. 360	504602
28	teflon centring bush	373079

thermoelement, core temp. sensor, pressure sensor, fan, water inlet

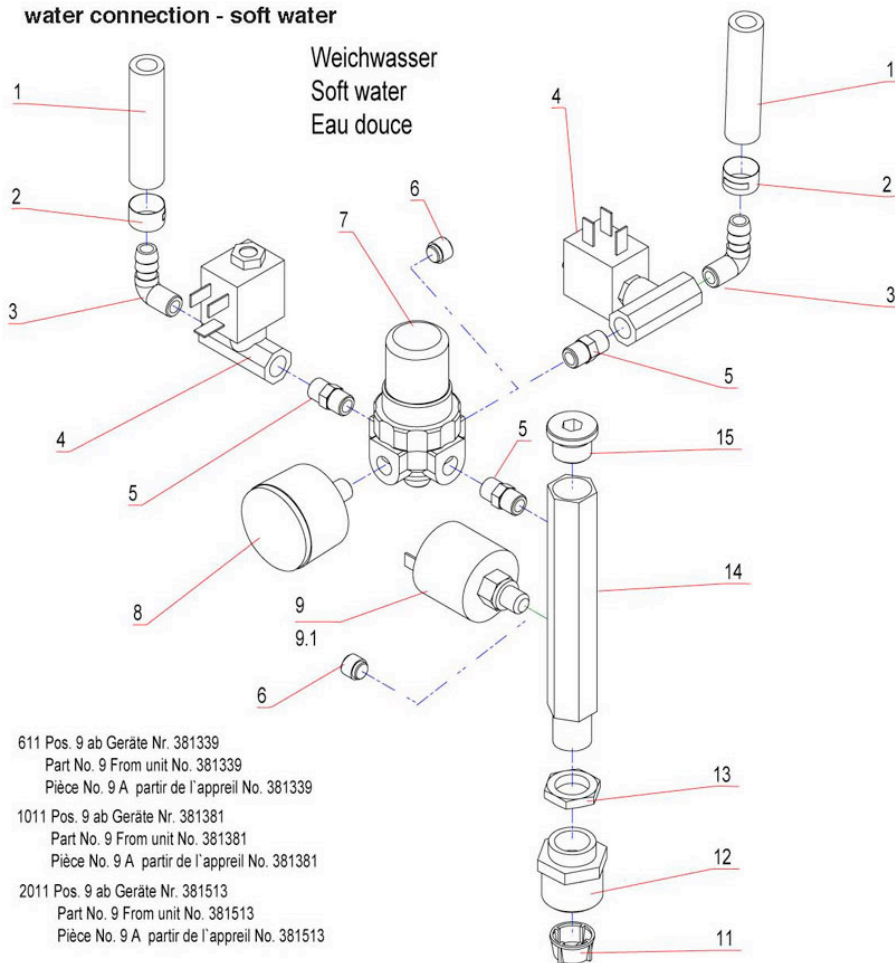


Pos.	Description	Article
1	horizontal fan	573469
2	spring lock washer A4	001023
3	nut M 4	003905
4	screw M 4X8	001015
6	washer 4,3	001007
7	bracket for diff. Pressure sensor	745626
7	bracket f. diff. pressure switch	757918
9	difference pressure sensor	752479
10	Kabelbinder natur 160x205	
11	hose 6x3	593311
12	screw M 4X8	001015
13	hose clamp	277665
14	screw in funnel	748919
16	nut G1/8	757675
17	sealing ring 10x15x1	097071
18	serrated lock washer A 10.5	349771
20	nut R 1/4"	035637
21	serrated lock washer A8.4	012564
21	toothed washer	758574
22	support f. core temp.sensor	743356
23	FEDER HALTERUNG KERNTemperatur	
24	o-ring	743585
25	screw M 4X12	010332
26	support f. core temp.sensor	743348
27	o-ring	013455
28	core temp. sensor	752363
29	basket cover	745464
33	sealing ring 13x19x1	582247
34	teflon insert	336211
35	NICRNI sensor	570621
	cabl harness sensor	753947
	cabl harness sensor	753955
	cabl harness sensor	753963
	cabl harness sensor	753971

water connection - hard water, soft water

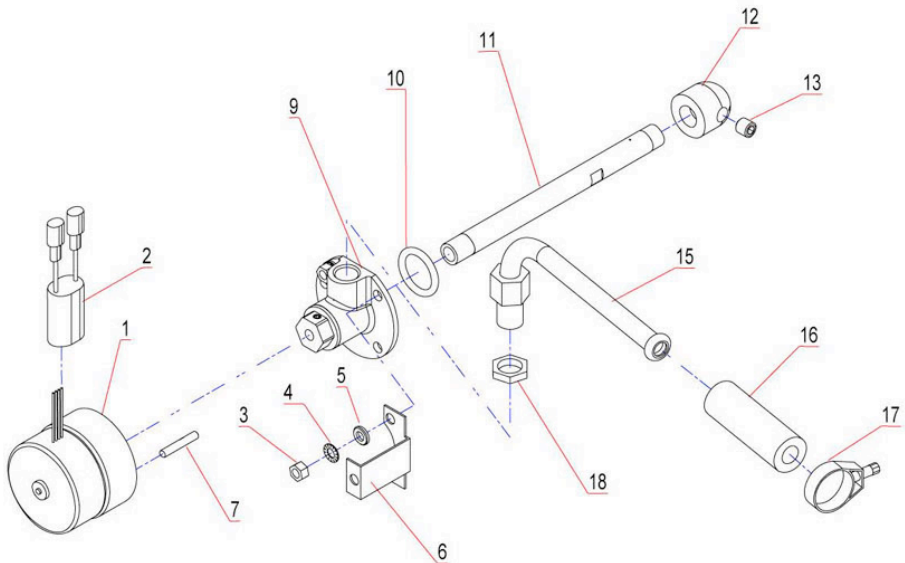


Pos.	Description	Article
1	hose 9x3	593303
2	hose clamp	277665
3	angle screw in funnel	582166
4	solenoid valve	374806
5	double nipple	754447
8	screw plug	754498
9	screw plug	399280
10	stand pipe	779660
11	nut R 3/8"	035599
12	reducing part	249696
13	filter	249688
16	washer nut M5	541397
17	water inlet pipe	743267
17	water inlet pipe	740624

water connection - soft water


Pos.	Description	Article
1	hose 9x3	593303
2	hose clamp	277665
3	angle screw in funnel	582166
4	solenoid valve	374806
5	double nipple	754447
6	screw plug	399280
7	pressure reducer	577316
8	pressure gauge	224758
9	Umbausatz Druckschalter mit Montagematerial	
9.1	pressure switch	784028
11	filter	249688
12	reducing part	249696
13	nut R 3/8"	035599
14	stand pipe	779660
15	screw plug	754498

autoclean geared motor, nozzle



Pos.	Description	Article
1	VBG motor Autoclean	753807
2	capacitor	753823
3	nut M 5	252867
4	serrated lock washer M 5A	012556
5	washer 5,3	003980
6	bracket f. motor	753858
7	threaded pin M 4x25	753831
9	VBG axis autoclean	775177
10	o-ring	753742
10	o-ring	399434
11	nozzle pipe	753793
11	nozzle pipe	755893
12	main nozzle autoclean	753777
12	main nozzle autoclean	772690
13	threaded pin M8x8	753785
15	water inlet pipe	509868
16	hose 10x5	753734
17	hose clip D25 1.4301	
18	nut R 1/4"	035637
	retaining ring D18	339385
	retaining ring D14 DIN 471 1.4301	581011

Kierspüler Rinse agent

Reiniger Cleaner

611 ab Geräte Nr. 380987
From unit No. 380987
A partir de l'appareil No. 380987

1011 ab Geräte Nr. 381003
From unit No. 381003
A partir de l'appareil No. 381003

2011 ab Geräte Nr. 381513
From unit No. 381513
A partir de l'appareil No. 381513

1221 ab Geräte Nr. 381479
From unit No. 381479
A partir de l'appareil No. 381479

2021 ab Geräte Nr. 381479
From unit No. 381479
A partir de l'appareil No. 381479

611 bis Geräte Nr. 380987
Upto unit No. 380987
jusqu'à partir de e'appareil No. 380987

1011 bis Geräte Nr. 381003
Part Upto unit No. 380987
jusqu'à partir de e'appareil No. 380987

2011 bis Geräte Nr. 381513
Upto unit No. 381513
jusqu'à partir de e'appareil No. 381513

1221 bis Geräte Nr. 381479
Part Upto unit No. 381479
jusqu'à partir de e'appareil No. 381479

2021 bis Geräte Nr. 381479
Upto unit No. 381479
jusqu'à partir de e'appareil No. 381479

Reiniger Cleaner

Kierspüler Rinse agent

Pos.	Description	Article
1	hose steam 13x5	753661
2	hose clamp	756040
3	Y - connection piece autoclean	756024
5	hose 10x5	753734
6	hose clip	572160
7	Y - connection piece autoclean	756032
7	hose clamp	756040
9	SCHWINGKOLBENPUMPE AUTOCLEAN (nicht mehr lieferbar)	
10	T piece	658073
11	washer 4,3	001007
12	double nipple 1/8	754447
14	snap clamp	766747
15	hose 6x12	175781
16	washer 5,3	003980
17	serrated lock washer M 5A	012556
18	screw M5 x 16	010685
19	angle bracket	753904
20	angle bracket	748889
21	Y - connection piece autoclean	753890
23	nut M 4	003905
24	spring lock washer A4	001023
25	splash guard	753440
27	collector pan	753424
28	MUFFE 1/2 Zoll TYP 3270	
29	pipe breather w. none return valve	753416
30	hose jacket	753432
32	canister cap	756075
32	canister cap	756334
34	clamp	756113
35	suction strainer	079197
36	vibration pump	772550
37	angle	773719
	oscilating pump autoclean	753866

Hinweis zur Schwingkolbenpumpe - Einbau bis 2.2003:

Bei Austausch der Schwingkolbenpumpen die bis zum 2.2003 eingebaut wurden, muss der Umbausatz 753866 bestellt werden, da die neue Schwingkolbenpumpe 772550 nicht ohne Verwendung von zusätzlichen Bauteilen in die alte Baugruppe passt.

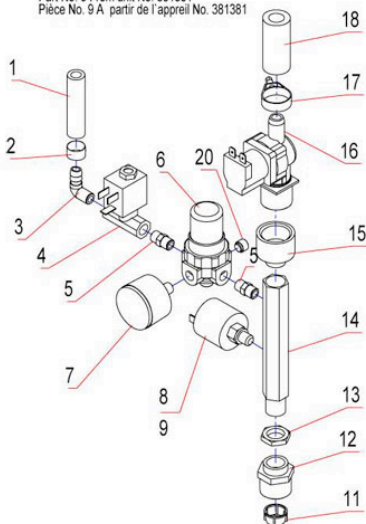
Im Umbausatz 753866 sind enthalten:

- 2 St. Schwingkolbenpumpen
- 2 St. Winkelstücke G1/8 Zoll
- 1 St. Y-Verbindungsstück
- 1 St. Doppelnippel
- 1 St. Haltewinkel kpl.
- 1 St. T-Stück kegelig
- 2 St. Fächerscheiben M5A
- 2 St. Schrauben M5x16
- 2 St. U-Scheiben A5,3

autoclean water connection

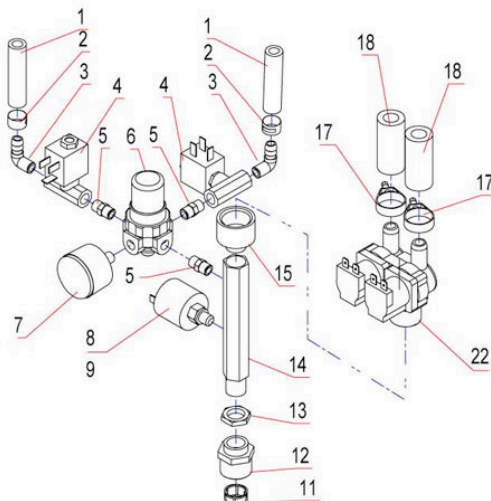
611, 1011, 1221

611 Pos. 9 ab Geräte Nr. 381339
 Part No. 9 From unit No. 381339
 Pièce No. 9 A partir de l'appareil No. 381339
 1011 Pos. 9 ab Geräte Nr. 381381
 Part No. 9 From unit No. 381381
 Pièce No. 9 A partir de l'appareil No. 381381



2011, 2021

2011 Pos. 9 ab Geräte Nr. 381513
 Part No. 9 From unit No. 381513
 Pièce No. 9 A partir de l'appareil No. 381513

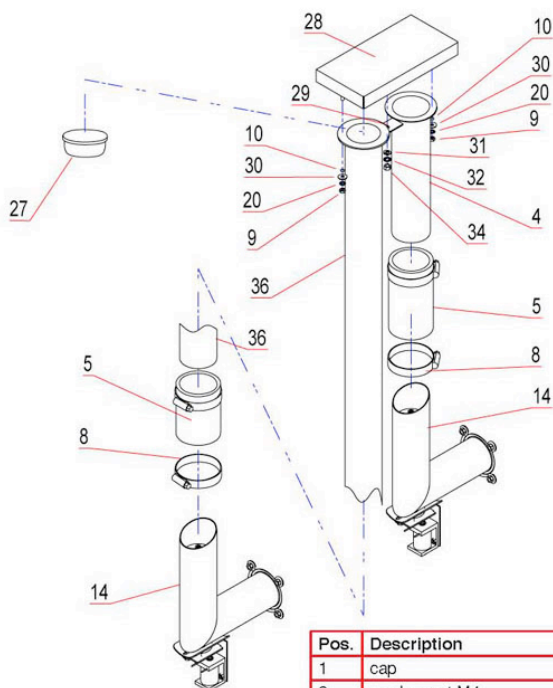
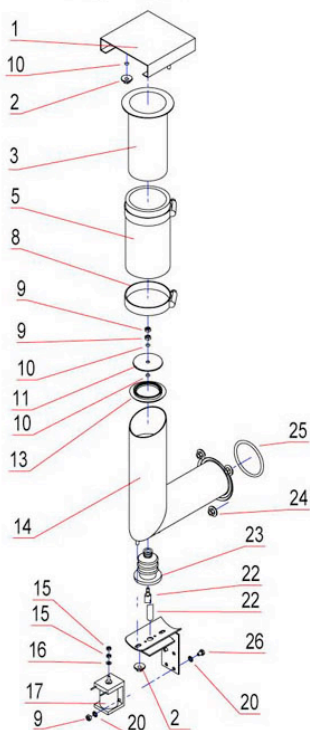


Pos.	Description	Article
1	hose 9x3	593303
2	hose clamp	277665
3	angle screw in funnel	582166
4	solenoid valve	374806
5	double nipple	754447
6	pressure reducer	577316
7	pressure gauge	224758
8	Umbausatz Druckschalter (KD-Ersatzteil)	
9	pressure switch	784028
11	filter	249688
12	reducing part	249696
13	nut R 3/8"	035599
14	stand pipe	779660
15	reducing part	754943
16	solenoid valve	754463
17	hose clamp	756040
18	hose steam 13x5	753661
20	screw plug	399280
22	solenoid valve	754471

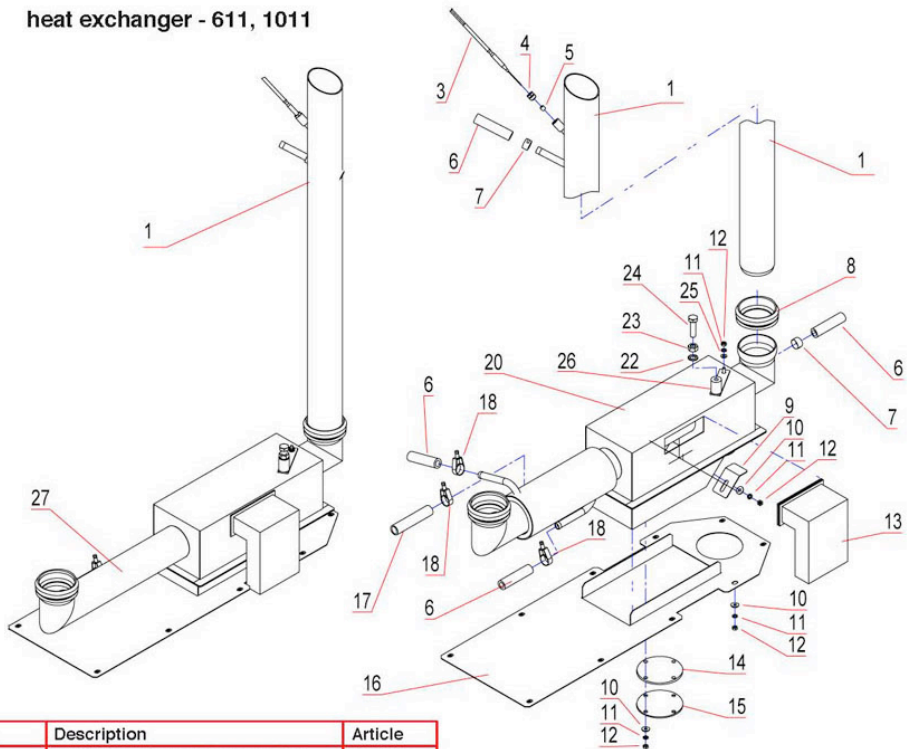
611, 1011, 1221

exhaust

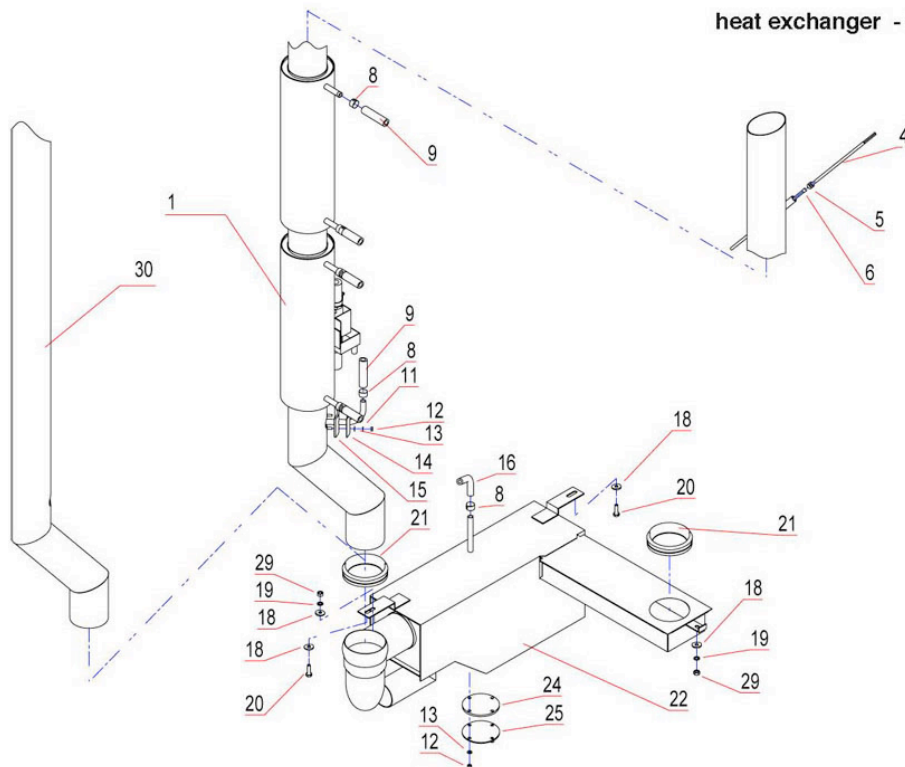
2011, 2021



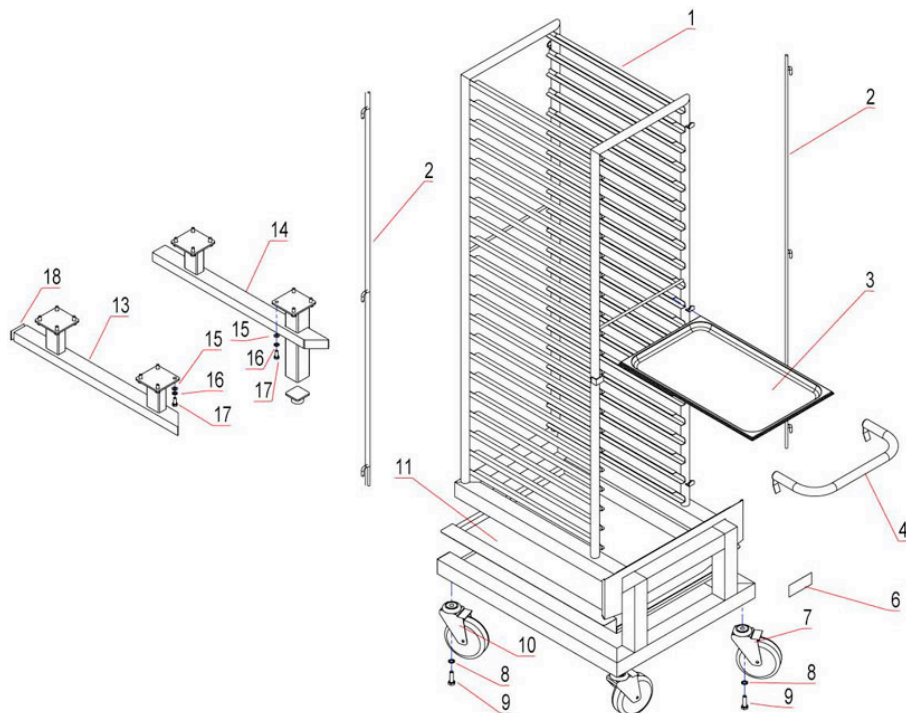
Pos.	Description	Article
1	cap	575895
2	washer nut M4	553395
3	air inlet adapter	575941
3	air inlet adapter	575852
5	silicone hose	580635
8	hose clamp	580791
9	nut M 4	003905
10	o-ring	013455
11	covering plate	576247
13	shaped seal	509191
14	air inlet pipe	575933
15	nut M 3	000396
16	washer 3,2	000965
17	lifting magnet	565377
20	toothed washer 4,3	050849
22	lifting rod	579173
23	bellow exhaust pipe mounted	566594
24	washer nut M5	541397
25	sealing ring	757071
26	screw M 4x6	570923
27	blind plug	582263
28	cap	751987
29	clamping plate	757217
30	washer 4,3	026999
31	washer 5,3	003980
32	toothed washer 5,3	304816
34	nut M 5	252867
36	Verbindungsrohr Zuluft 2011	

heat exchanger - 611, 1011


Pos.	Description	Article
1	ventilation pipe waste steam 611	772631
1	ventilation pipe waste steam 1011	772658
3	NICRNI sensor	570621
4	stuffing box nipple	759864
5	seal 3X1.5X6	268666
6	hose 9x3	593303
7	hose clamp	277665
8	sealing ring	307025
9	elbow catch	742848
10	washer 4,3	026999
11	spring lock washer A4	001023
12	nut M 4	003905
13	overflow siphon	740896
14	sealing ring	740853
15	packing flange	740861
16	mounting plate	745510
17	hose 11x3	506222
18	hose clamp	276634
20	siphon	740454
22	serrated lock washer A8.4	012564
23	nut M 8	254177
24	Sechskantschraube M8x30 ISO 4017	
25	washer 4,3	001007
26	bracket cooking chamber	740632
27	siphon	748625
	cabl. cpl.	763055

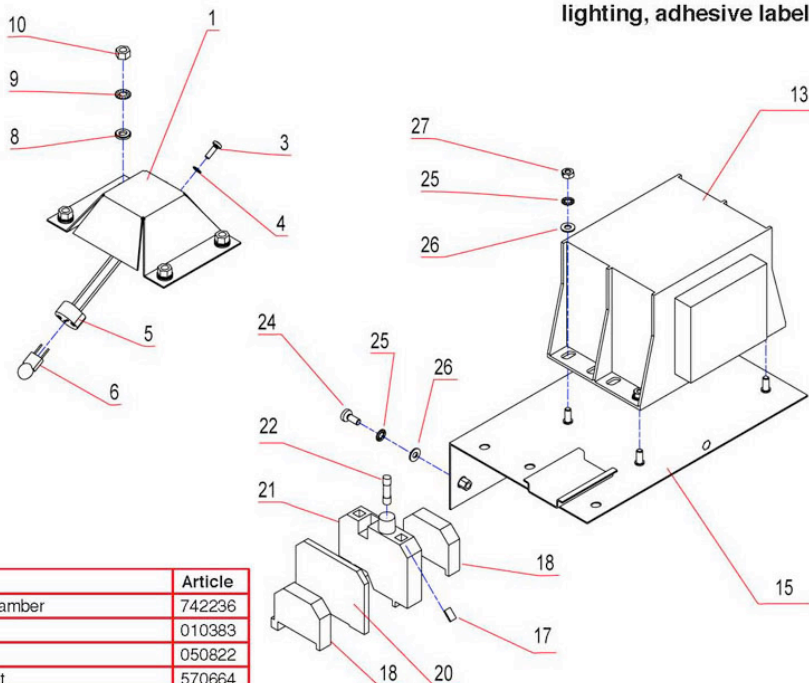
heat exchanger - 2011


Pos.	Description	Article
1	Wärmetauscher kpl.	
4	NICRONI sensor	570621
5	stuffing box nipple	759864
6	seal 3X1.5X6	268666
8	clamp	593398
9	hose 9x3	593303
11	spring lock washer A4	001023
12	nut M 4	003905
13	washer 4,3	001007
14	Wasserzulaufrohr Wärmetauscher	
15	Dichtung Wasserzulaufrohr Wärmetauscher	
16	hose 9x3	593303
18	washer 6,4	000582
19	serrated lock washer A6.4	006777
20	screw M 6X20	273651
21	sealing element silikon	558125
22	siphon	745782
24	sealing ring	740853
25	packing flange	740861
29	nut M 6	251887
30	ABLUFTRÖHR kpl. 2011	
	cabl. cpl.	763055

shelf type cart


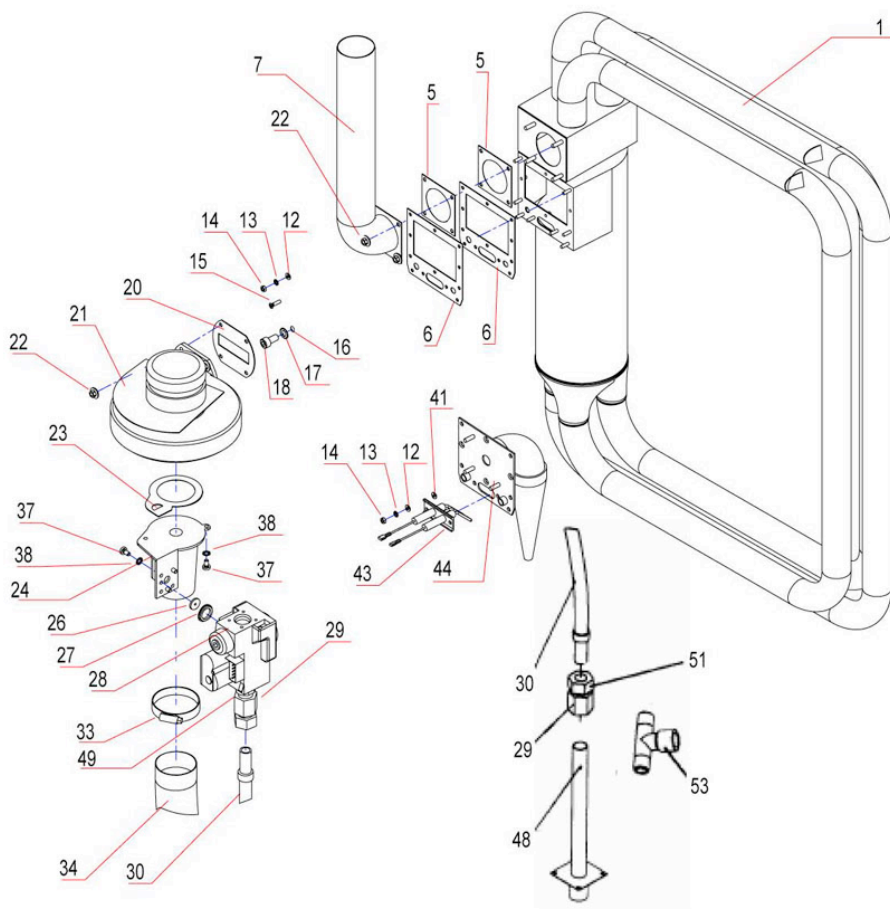
Pos.	Description	Article
1	shelf type cart 2011	755818
2	catch	772089
3	Backblech GN 1/1 20 mm Edelstahl	
4	bridge handle	745359
6	Klebeschild Hordenwagen 2011 max. 150 kg	
7	Lenkrolle mit Feststeller in VA D=125 mm	
8	serrated lock washer A 10.5	349771
9	6kt-Schraube ISO 4017 M10x35 V2A	
10	Lenkrolle o. Feststeller in VA D=125 mm	
11	pan enameled hurdle	809683
13	drive in rail	746983
14	drive in rail	745073
15	washer 8,4	001325
16	serrated lock washer A8.4	012564
17	6kt-Schraube ISO 4017 M8x20 V2A DIN 933	
18	lamellar plug	768871

lighting, adhesive label

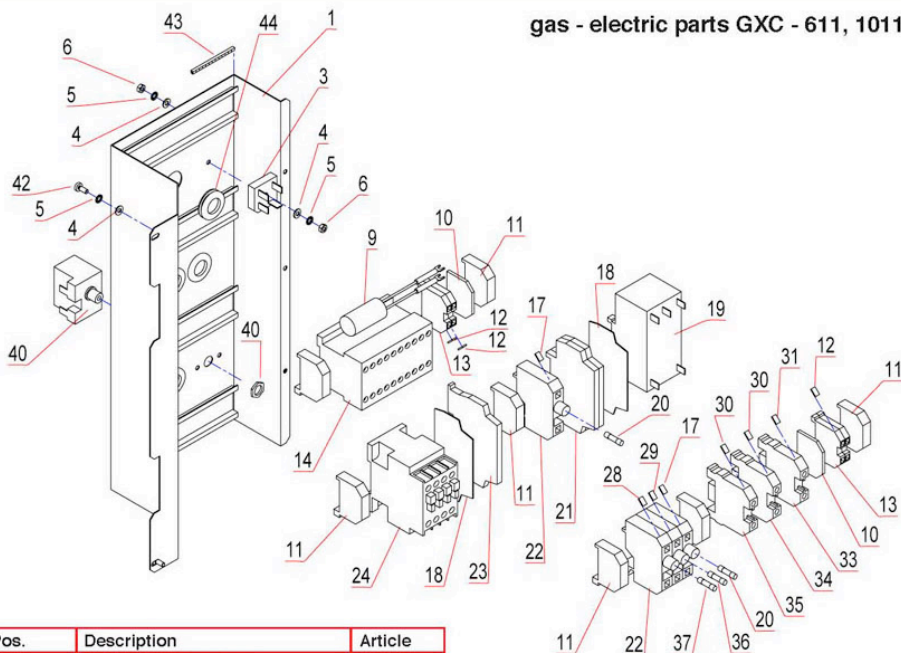


Pos.	Description	Article
1	reflector cooking chamber	742236
3	screw M 3X8	010383
4	toothed washer 3,2	050822
5	halogen lamp socket	570664
6	halogen lamp 300 G	570478
8	washer 5,3	003980
9	toothed washer 5,3	304816
10	nut brass	553727
13	transformer	572217
13	transformer	772151
15	Montageblech Trafo Licht 611 1011 1221	
15	Montageblech Trafo Licht 2011 2021	
17	identification plate 4A	765406
17	identification plate 10A	568155
18	plastic end bracket	337676
20	end and distance plate	327514
21	fuse terminal	326941
22	fine wire fuse 5X20 4AT	307963
22	fine wire fuse 5X20 10A	578975
24	screw M 4X10	010502
25	toothed washer 4,3	050849
26	washer 4,3	001007
27	nut M 4	003905
	----- Klebeschilder -----	
	label external voltage	543152
	adhesive label	765090
	adhesive label	756067
	adhesive label	587540
	adhesive label	584215
	adhesive label	582565
	adhesive label	774847

gas - heat exchanger

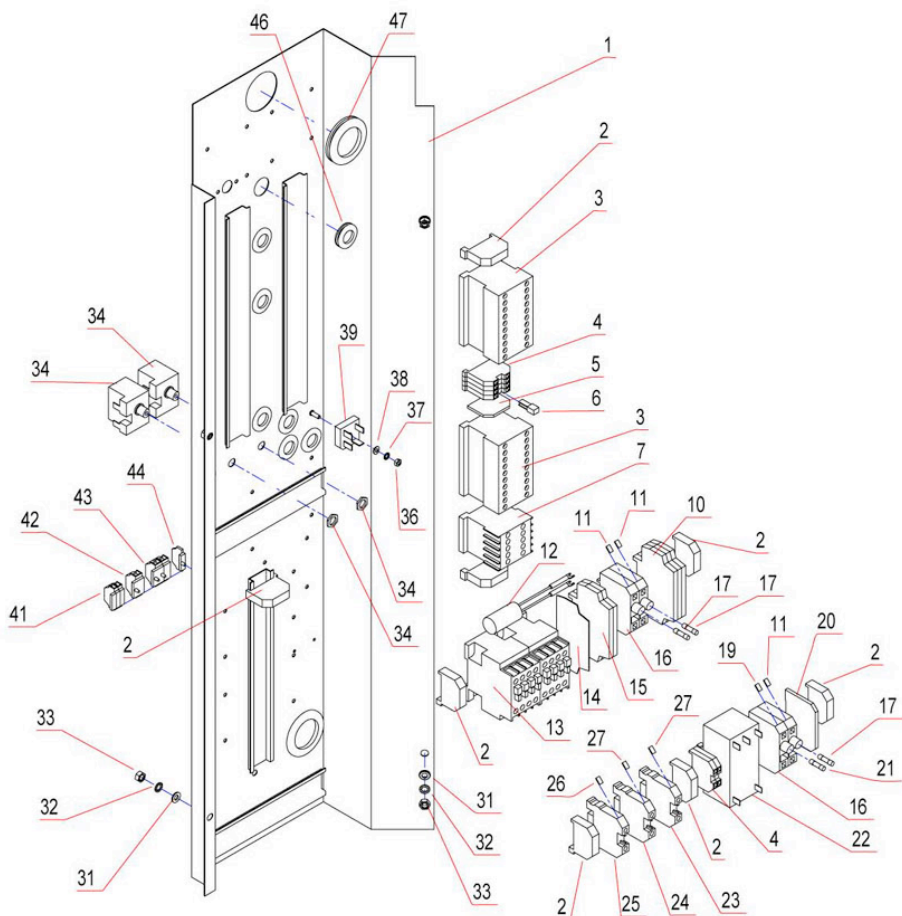


Pos.	Description	Article
1	gas heat exchanger 611 right	762733
1	gas heat exchanger 611 left	742597
1	gas heat exchanger 1011-2011 left	765767
1	gas heat exchanger 10-2011 right	744042
1	gas heat exchanger 12-2021 right	770426
5	seal exhaust flange 6/11 - 20/11	874868
6	burner chamber	742651
7	exhaust pipe	744026
7	flue gas pipe	742694
7	exhaust pipe	771619
7	exhaust pipe	771600
7	exhaust pipe	771120
7	exhaust pipe	771139
12	washer 4,3	001007
13	spring lock washer A4	001023
14	nut M 4	003905
15	screw M 4X12	010332
16	copper sealing	570826
17	serrated lock washer A8.4	012564
18	screw M 8x16	765252
20	seal f. fan	874841
21	radial fan	742686
22	washer nut M5	541397
23	seal venturi	744085
24	Venturi D2 611	743925
24	Venturi D2 1011-2011	743933
24	Venturi D2 1221-2021	773174
26	nozzle liquid gas	743984
27	sealing set gas	743941
28	gas valve	744050
29	SCHOTTVERSCHRAUBUNG GAS	
30	ring wave hose gas	765295
30	ring wave hose gas	774367
33	hose clamp	580791
34	air pipe	766291
37	screw M 5X10	189405
38	serrated lock washer M 5A	012556
41	seal electrode block	742724
43	block of electrodes	874787
44	burner D	770973
44	burner D	770981
44	burner D	773190
48	stand pipe	771694
49	flange	770914
51	function nut gas pipe 15	773832
51	function nut gas pipe 22	773840
53	T reduction	773867
	gas firing machine	743992

gas - electric parts GXC - 611, 1011 Gas


Pos.	Description	Article
1	electro mounting sheet	744514
3	bridge rectifier	570532
4	washer 4,3	001007
5	spring lock washer A4	001023
6	nut M 4	003905
9	interference suppression capacitor	338419
10	end plate	570966
11	plastic end bracket	337676
12	identification plate	580546
13	clamp	572055
14	compact reversing contactor	580481
17	identification plate 10A	568155
18	end and distance plate	752452
19	interference suppression filter	742767
20	fine wire fuse 5X20 10A	578975
21	auxiliary relay 230V	742813
22	fuse terminal	326941
23	Abschlussplatte	
24	contactor	523909
28	identification plate 4A	765406
29	identification plate 2A	580511
30	identification plate	543144
31	identification plate	543144
33	clamp	572985
34	terminal block	388769
35	clamp	572977
36	fine wire fuse 5X20 2,0AT	190756
37	fine wire fuse 5X20 4AT	307963
40	STB 1 pol. 360	504602
42	screw M 4X10	010502
43	Kantenschutz	
44	diaphragm bushing	232963

gas - electric parts GXC - 2011 Gas



Pos.	Description	Article
1	E-MONTAGEBLECH KPL. 2011	
2	plastic end bracket	337676
3	compact reversing contactor	580481
4	clamp	572055
5	end plate	570966
6	t- bridge	303089
7	auxiliary contactor	752177
10	auxiliary relay 230V	742813
11	identification plate 10A	568155
12	interference suppression capacitor	338419
13	Schütz	
14	end and distance plate	752452
15	auxiliary relay 12V	764116
16	fuse terminal	326941
17	fine wire fuse 5X20 2,0AT	190756
19	identification plate 2A	580511
20	end and distance plate	327514
21	fine wire fuse 5X20 2,0AT	190756
22	interference suppression filter	742767
23	clamp	572977
24	terminal block	388769
25	clamp	572985
26	identification plate	543144
27	identification plate	543144
31	washer 6,4	000582
32	serrated lock washer A6.4	006777
33	nut M 6	251887
34	STB 1 pol. 360	504602
36	nut M 4	003905
37	spring lock washer A4	001023
38	washer 4,3	001007
39	bridge rectifier	570532
41	clamp	553549
42	clamp	513997
43	clamp	571075
44	end plate	570907
46	diaphragm bushing	232963
47	diaphragm bushing	255351