

## Spare Part Catalogue

Tumble Dryers

Type: TD70.C

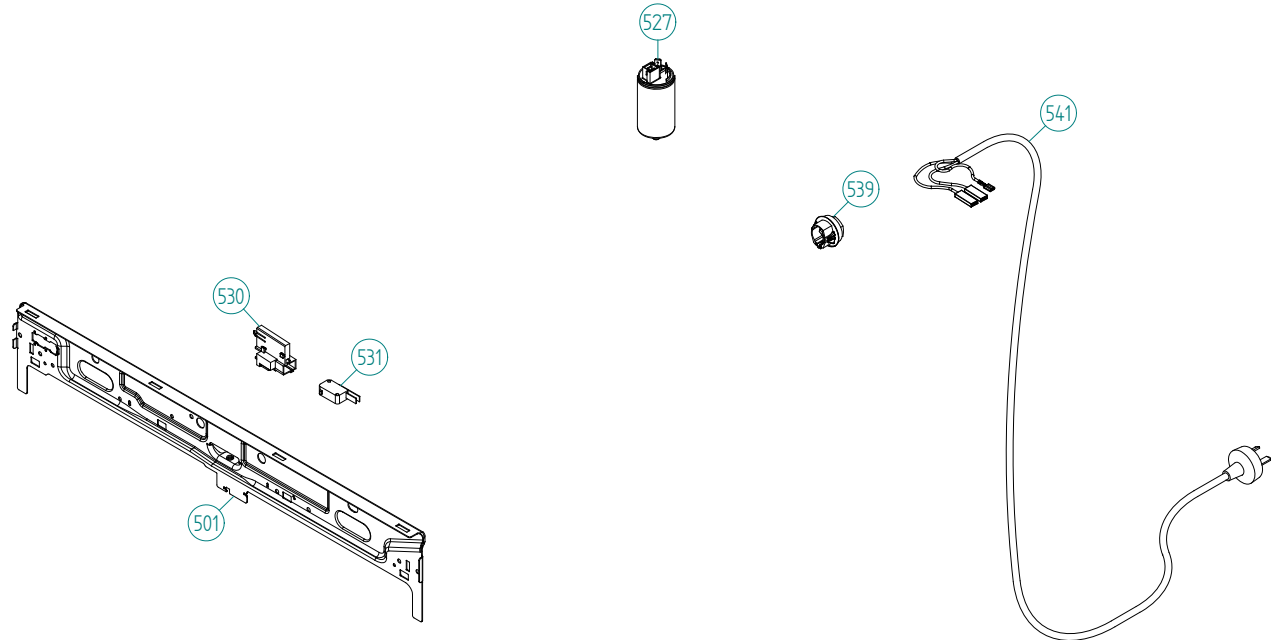
Model: ES7PEE IT Stainless

Prod. No: 31670401

August 28th 2012

**Asko Cylinda AB/After Sales**

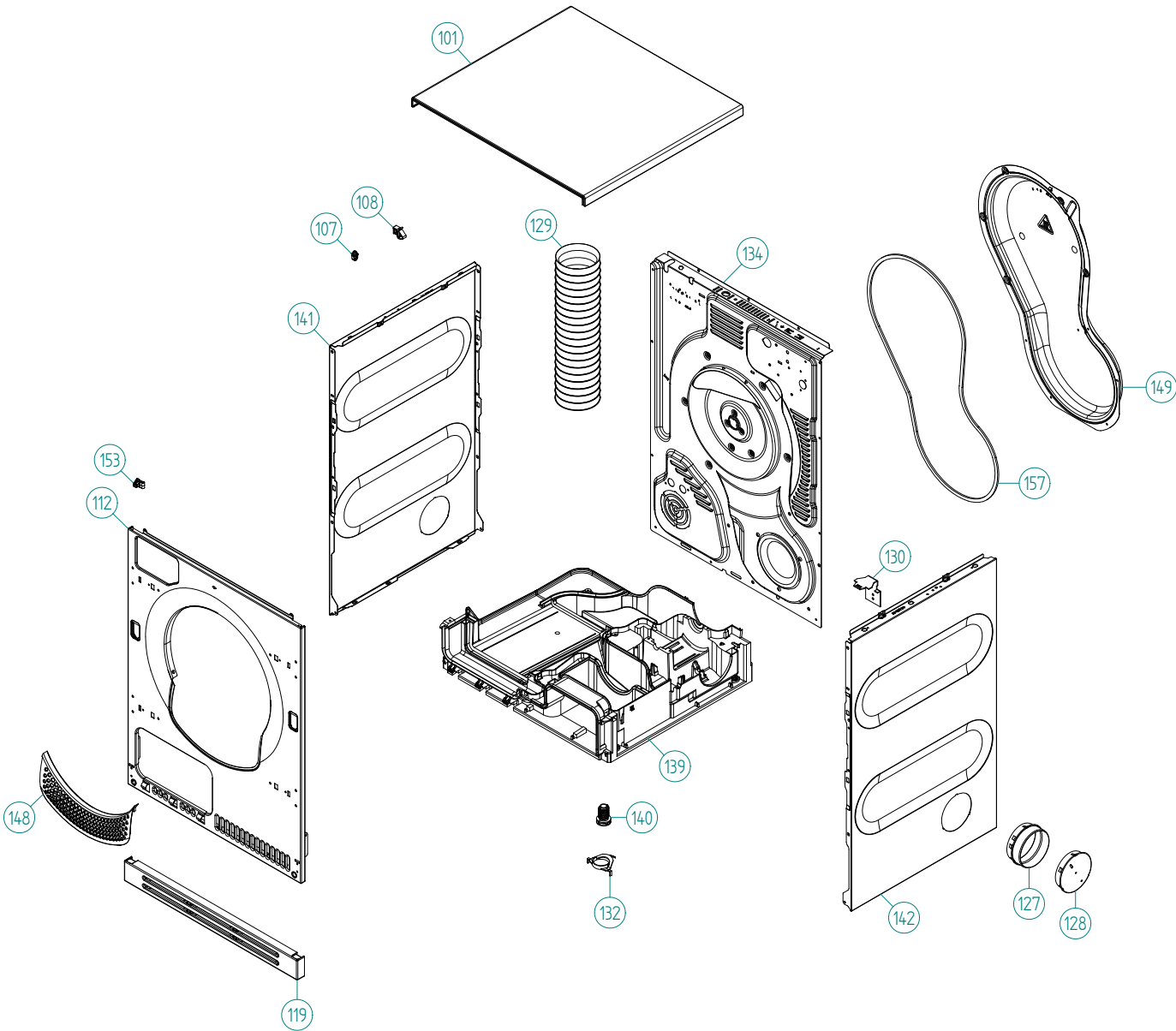
Box 344 Axvallagatan 3 SE-532 24 SKARA



## ***Upper session***

### ***Imesa, ES7PEE IT - Stainless (TD70.C)***

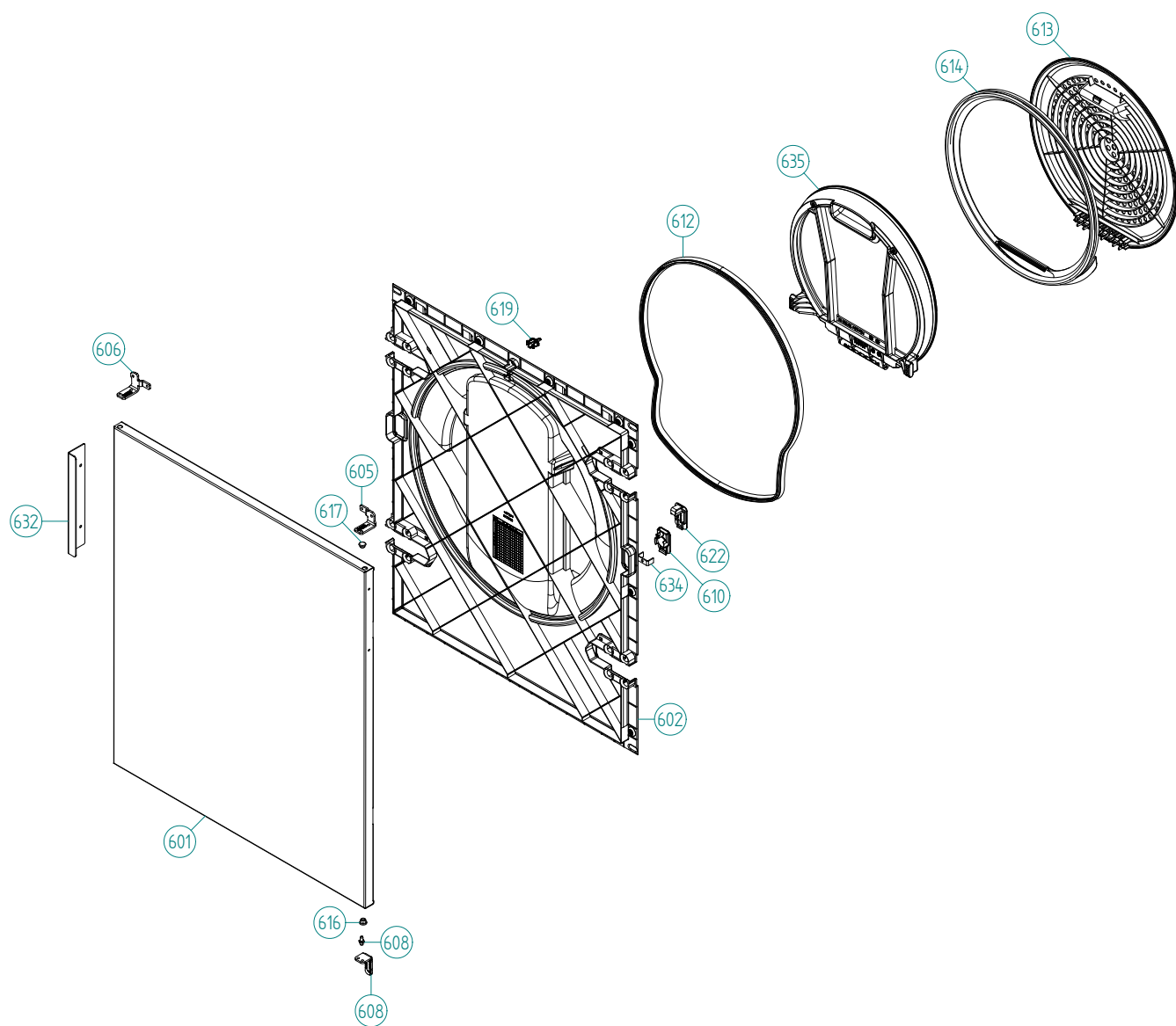
<b>Pos</b>	<b>Spare Part No.</b>	<b>Description</b>	<b>Qty</b>	<b>Comment</b>
501	8076029	FRONTBEAM	1 Pc's	
501-a	8902087	SCREW PTK 40X14 WN1452 FZB T20	1 Pc's	
527	8076202	EMC-FILTER WITH INDUCTOR	1 Pc's	
527-a	8901155	NUT M6M8 BH8 GALV	1 Pc's	
527-b	8901419	LOCK WASHER AZ 8,4 GALV	1 Pc's	
529	8090213	CABLE BUNDLE TD70 1PH. VENTED	1 Pc's	
530	8077519	BRACKET FOR DOOR SWITCH	1 Pc's	
531	8073836	MICROSWITCH DOOR	1 Pc's	
539	8006948	GROMMET Z13	1 Pc's	
541	8078989	CORD SET 16A EU 90C	1 Pc's	
588	8083019	CABLE SET LB TD UL4	1 Pc's	



## Outer casing

### Imesa, ES7PEE IT - Stainless (TD70.C)

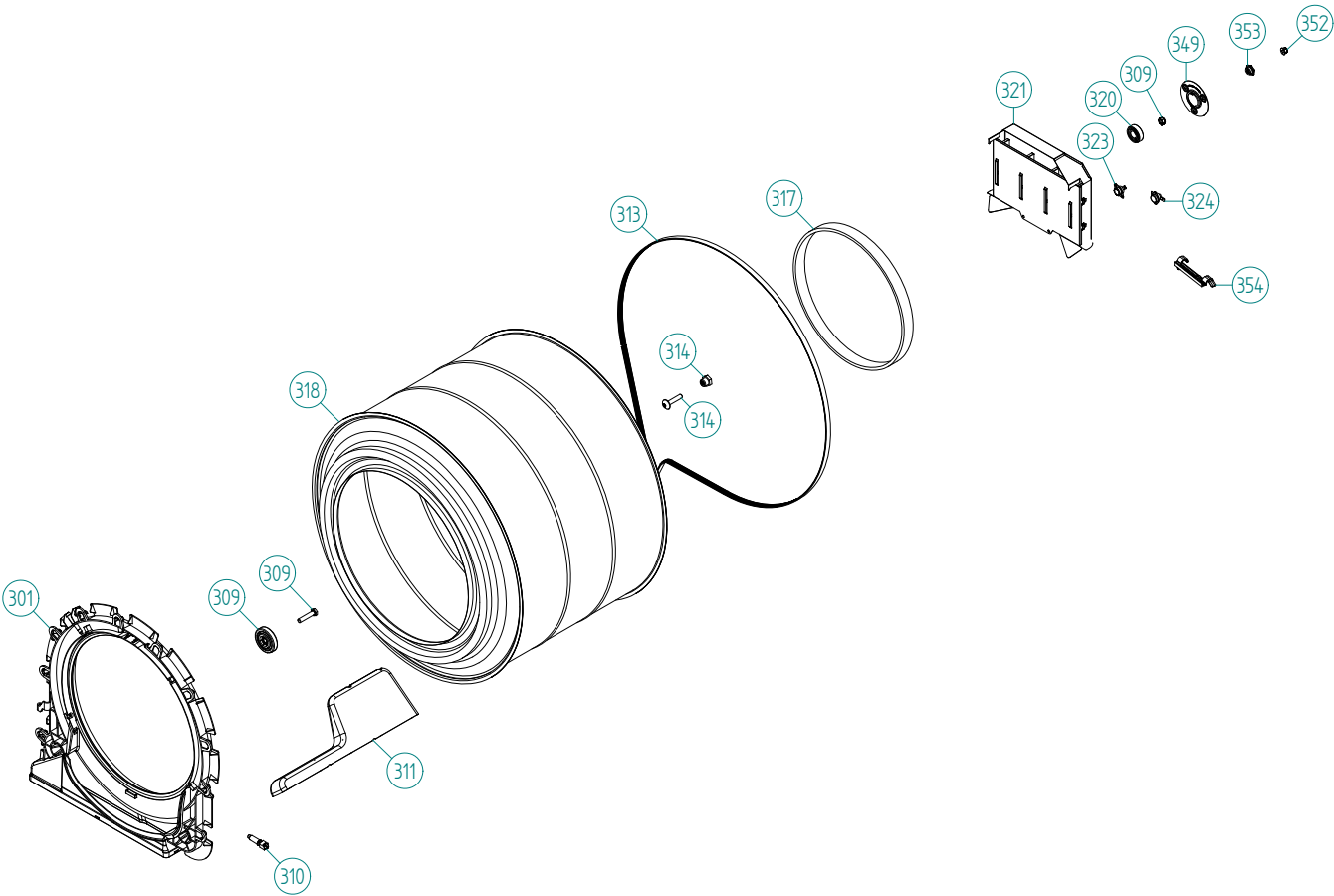
Pos	Spare Part No.	Description	Qty	Comment
101	8061817-91	TOP COVER FPR	1 Pc's	
101-a	8900338	SCREW RTK ST 4,2X9,5 FZB WAX.	3 Pc's	
101-b	8901413	LOCK WASHER AZ 4,3 GALV	2 Pc's	
107	8061763	GUIDE FRONT PLATE/TOP COVER	3 Pc's	
108	8061916	CABLE HOLDER WMD20 UL4	1 Pc's	
112	8082109-C-81	FRONT PANEL TD70 GREY METALLIC	1 Pc's	
112-a	8902087	SCREW PTK 40X14 WN1452 FZB T20	2 Pc's	
112-b	8902362	SCREW RTK ST 4,2X9,5 FZB WAX.	1 Pc's	
119	8077511-81	PLINTH CONDENSER	1 Pc's	
127	8052641	STUB EXHAUSTCANAL UL4	1 Pc's	
128	8052640-81-UL	LID EXHAUST CANAL GREY UL4	2 Pc's	
129	8064115	AIR HOSE WITH CABLE STRIP	1 Pc's	
130	8053980	TIP GUARD SURFACE CONDITIONED	1 Pc's	
130-a	8900327	SCREW RTS ST 4,2X13 FZB T20	1 Pc's	
132	8064114	CUP SELF ADHESIVE,IN BAG(2pcs)	1 Pc's	
134	8082112-D	REAR PANEL	1 Pc's	
134-a	8901971	SCREW C1-PTK 35X14 WN1453 T15	2 Pc's	
134-b	8902362	SCREW RTK ST 4,2X9,5 FZB WAX.	6 Pc's	
134-c	8902087	SCREW PTK 40X14 WN1452 FZB T20	3 Pc's	
139	8082103	BASE UL4	1 Pc's	
140	8082296	PLASTIC FOOT	4 Pc's	
141	8082134-B-81	SIDE PANEL GREY METALLIC	1 Pc's	
141-a	8902087	SCREW PTK 40X14 WN1452 FZB T20	1 Pc's	
142	8082134-A-81	SIDE PANEL GREY METALLIC	1 Pc's	
142-a	8902087	SCREW PTK 40X14 WN1452 FZB T20	1 Pc's	
148	8093232-49	DECORE COVER FRONT FRAME GREY	1 Pc's	
149	8082113	PANEL REAR COVER	1 Pc's	
149-a	8902362	SCREW RTK ST 4,2X9,5 FZB WAX.	10 Pc's	
153	8083205	SNAP-IN BRACKET FRONT PANEL	4 Pc's	
157	8094101	SEALING STRIP W. ADHESIVE 5X9	0 Pc's	



## Outer door

### Imesa, ES7PEE IT - Stainless (TD70.C)

Pos	Spare Part No.	Description	Qty	Comment
601	8076033-KK-91	OUTER DOOR COMM. FPR	1 Pc's	
601-a	8900352	SCREW RTS ST 4,2X13 FZB TORX/J	6 Pc's	
602	8082111-49	DOOR INNER PART	1 Pc's	
602	8093745-49	DOOR INNER PART	1 Pc's	
605	8077599-81	HINGE UPPER R	1 Pc's	
605-a	8900327	SCREW RTS ST 4,2X13 FZB T20	2 Pc's	
605-b	8901097	SCREW MRT-TT 4X10 FZB T20	1 Pc's	
605-c	8061804	HINGE PIN	1 Pc's	
606	8079489-81	HINGE UPPER L	1 Pc's	
606-a	8900327	SCREW RTS ST 4,2X13 FZB T20	2 Pc's	
606-b	8901097	SCREW MRT-TT 4X10 FZB T20	1 Pc's	
606-c	8061804	HINGE PIN	1 Pc's	
608	8076032-81	HINGE DOOR LOWER	1 Pc's	
608-a	8901097	SCREW MRT-TT 4X10 FZB T20	2 Pc's	
608-b	8061804	HINGE PIN	1 Pc's	
610	8080101-49	MAGNET LOCK COMPL.	1 Pc's	
610-a	8902087	SCREW PTK 40X14 WN1452 FZB T20	1 Pc's	
612	8087917	SEALING INNER DOOR	1 Pc's	
613	8083220-49	FILTER HOLDER GREY	1 Pc's	
614	8087916	SEALING FILTER HOLDER	1 Pc's	
616	8061865-81	HINGE BEARING GREY	2 Pc's	
617	8061953-81	PLUG DOOR GREY	1 Pc's	
619	8077488-49	DOOR PIN	1 Pc's	
622	8076079-49	COVER FOR LOCK/LOCK HOOK	1 Pc's	
632	8083380-91	HANDLE TD60.C	1 Pc's	
634	8081680	TINPLATE MAGNETIC CATCH	1 Pc's	
635	8801511	LINT FILTER COMPL. TD70	1 Pc's	

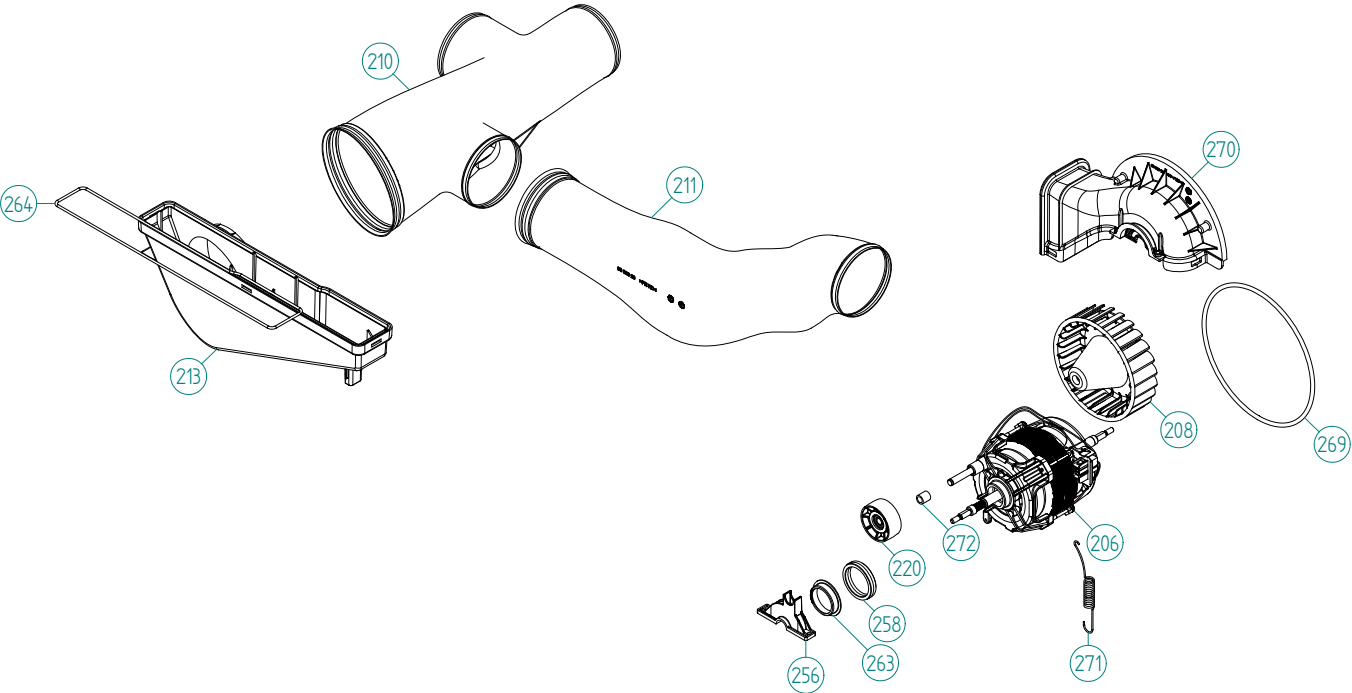




## Cylinder and related parts

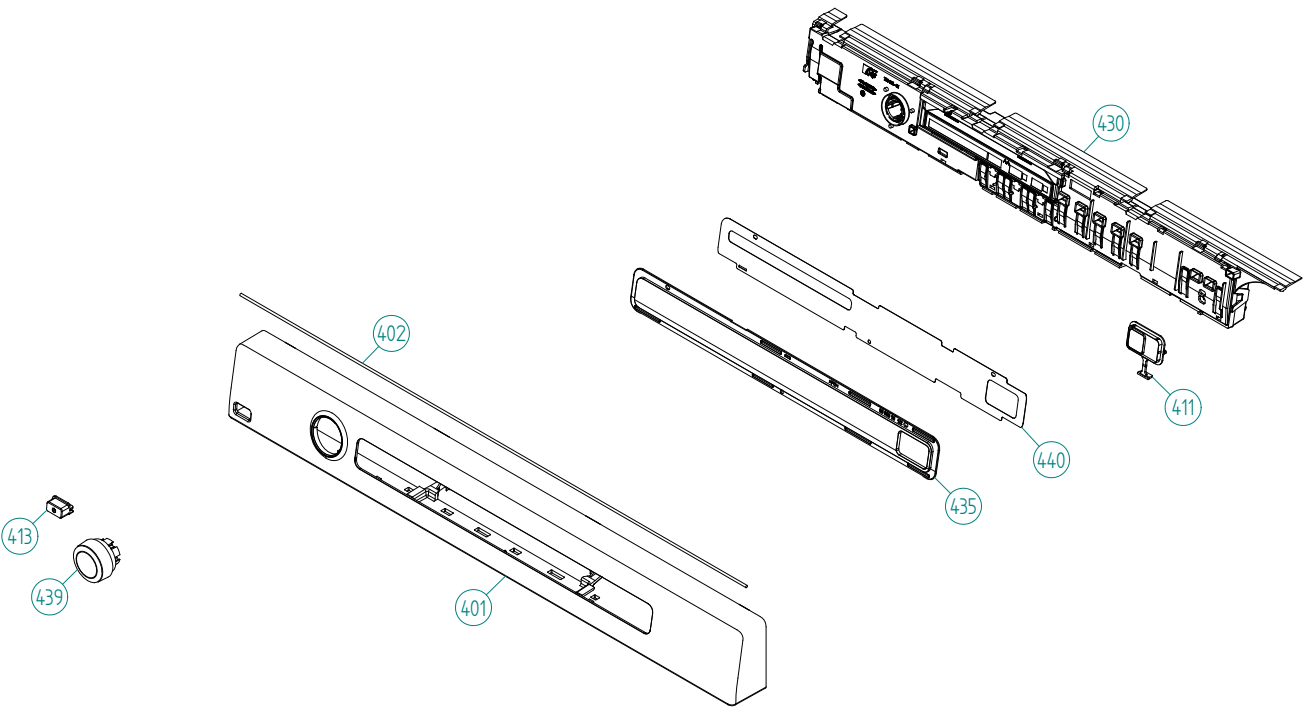
### Imesa, ES7PEE IT - Stainless (TD70.C)

Pos	Spare Part No.	Description	Qty	Comment
301	8801494	FRONTFRAME CPL. TD70 INCL.SEAL	1 Pc's	
301-a	8901971	SCREW C1-PTK 35X14 WN1453 T15	4 Pc's	
309	8093182	SUPPORT WHEEL INT. BALL BEAR.	2 Pc's	
309-a	8901337	WASHER BRB 8,4X16 HB 200 GALV	2 Pc's	
309-b	8901193	NUT LOC-KING 8 BH8 GALV	2 Pc's	
309-c	8901031	SCREW BUFO 8.8 8X40 GALV	2 Pc's	
310	8083344	THERMISTOR TD	1 Pc's	
311	8052589-49	PADDLE TD	2 Pc's	
311-a	8902099	SCREW PTK 50X14 WN1452 FZB T20	5 Pc's	
313	8082133	BELT DRYER TD70	1 Pc's	
314	8082453	BEARING BUSHING SHORT	1 Pc's	
314-a	8088429	SCREW M8 A4 T40	1 Pc's	
317	8093952	FELTSEALING REAR W. FOAM	1 Pc's	
318	8091023-R	CYLINDER COMPL. TD	1 Pc's	
320	8004439	BALL BEARING SKF 6202-2Z/C3Q66	1 Pc's	
321	8082491	HEATING ELEMENT 3000W UL4	1 Pc's	
321-a	8900369	SCREW RTS 4,8X13 FZB T25	2 Pc's	
321-b	8901415	LOCK WASHER AZ 5,3 GALV	2 Pc's	
323	8090224	THERMOSTAT 110 TD	1 Pc's	
324	8090273	THERMOSTAT 135 MANUEL RESET	1 Pc's	
349	8082126	BEARING BRACKET	1 Pc's	
349-a	8902362	SCREW RTK ST 4,2X9,5 FZB WAX.	3 Pc's	
352	8902365	FLANGE NUT DIN6926 KL.8 M6 FZB	1 Pc's	
353	8082464	NUT BEARING LOCK	1 Pc's	
354	8082467	CABLE HOLDER HEATING ELEMENT	1 Pc's	



**Lower session****Imesa, ES7PEE IT - Stainless (TD70.C)**

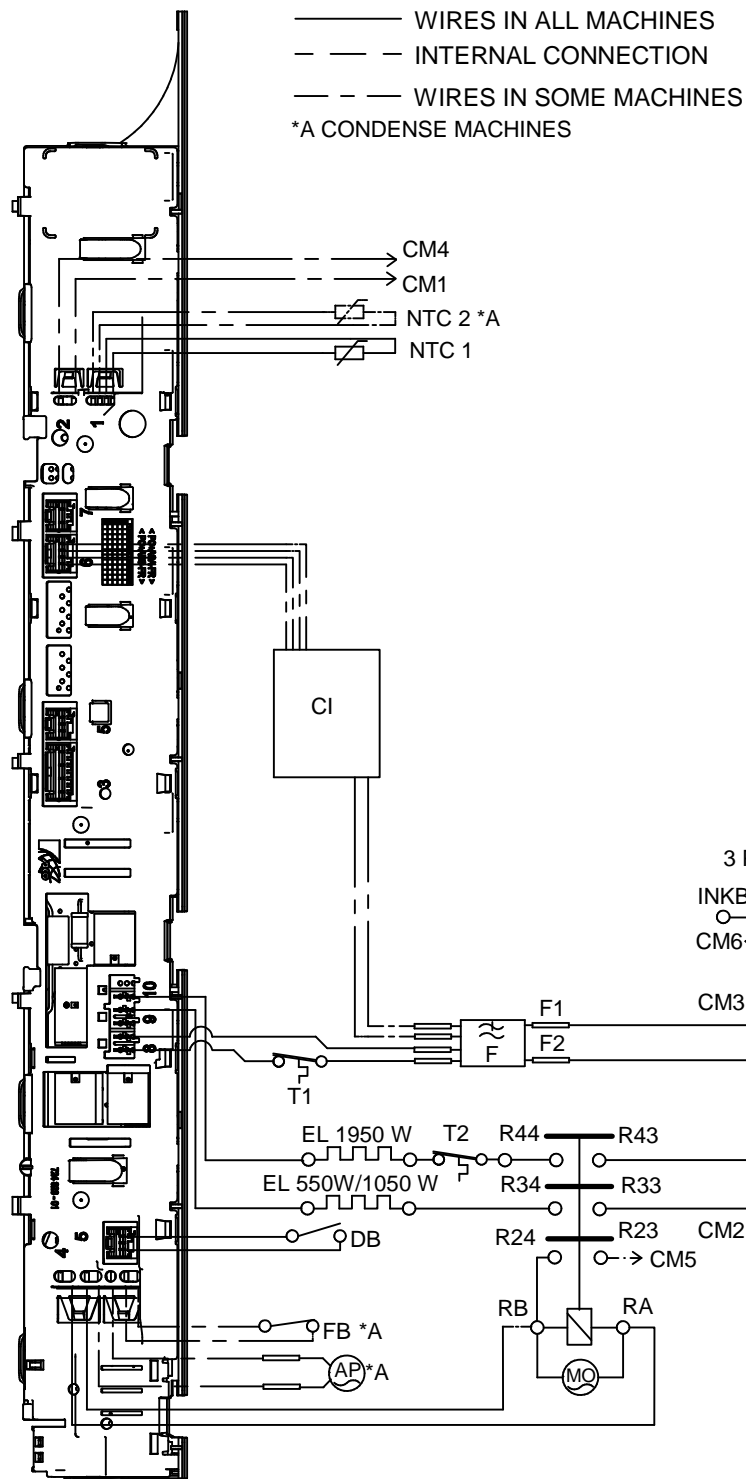
<b>Pos</b>	<b>Spare Part No.</b>	<b>Description</b>	<b>Qty</b>	<b>Comment</b>
206	8083915	MOTOR 50HZ	1 Pc's	
208	8083923	FAN WHEEL INTERNAL VENTED UL4	1 Pc's	
210	8083919	T-DUCT VENTED UL4	1 Pc's	
211	8083920	DUCT VENTED RIGHT UL4	1 Pc's	
213	8083918	CONNECTION VENTED	1 Pc's	
220	8091899	TENSION WHEEL EMBEDDED BEARING	1 Pc's	
256	8082454	ENGINE BEARING FITTING	1 Pc's	
256-a	8902087	SCREW PTK 40X14 WN1452 FZB T20	2 Pc's	
258	8082455	RUBBER DAMPER ENGINE BEARING	2 Pc's	
263	8082456	SLIDEER ENGINE BEARING	2 Pc's	
264	8088417	SEALING FRONT FRAME-COVER	1 Pc's	
269	8088416	SEALING FAN HOUSE	1 Pc's	
270	8082310	COVER INNER DUCT UL4	1 Pc's	
270-a	8902087	SCREW PTK 40X14 WN1452 FZB T20	2 Pc's	
271	8082161	BELT TENSIONER SPRING	1 Pc's	
272	8091071	SPACER SLEEVE	1 Pc's	



## ***Control panel***

### ***Imesa, ES7PEE IT - Stainless (TD70.C)***

<b>Pos</b>	<b>Spare Part No.</b>	<b>Description</b>	<b>Qty</b>	<b>Comment</b>
401	8090060-81	PANEL IMESA IT	1 Pc's	
402	8079749	O-RING CORD CELLULAR RUBBER	1 Pc's	
411	8081749-81	PUSHBUT. START/STOP PRINTED TD	1 Pc's	
413	8081710-81	PUSHBU. MAINSWITCH WMD60.2 UL4	1 Pc's	
430	8801522	CONTROL UNIT COMPL. TD70.C	1 Pc's	
435	8083316	LENS 0-OPTIONS WMD60.2	1 Pc's	
439	8083075-81	KNOB OEM WMD60.2	1 Pc's	
440	8083375-81	DECOR PLATE 0-OPTIONS WMD60.C	1 Pc's	
490	8094250	INSTRUCTIONS IMESA ES7PEE IT	1 Pc's	
490	8094251	INSTRUCTIONS IMESA ES7PEE ENG	1 Pc's	
490	8094252	INSTRUCTIONS IMESA ES7PEE FR	1 Pc's	
491	8094259	DRYING GUIDE IMESA TD70.C IT	1 Pc's	
491	8094260	DRYING GUIDE IMESA TD70.C ENG	1 Pc's	

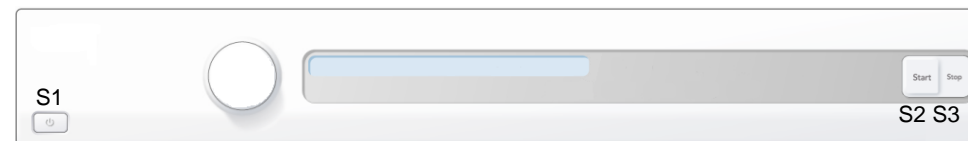


## CABLE POSITIONS

- 1: THERMISTOR
- 2: COINMETER
- 4: MOTOR, DRAIN PUMP, FLOAT SWITCH
- 5: DOOR SWITCH
- 6: COMMUNICATIONS INTERFACE
- 8: POWER
- 9: HEATING ELEMENT

RESISTANCES AT ROOM TEMPERATURE (CA. 20°C/68°F)  
 VALUES WITH +/-10% ARE REGARDED AS NORMAL  
 COMPONENT

F: RADIO INTERFERENCE SUPPRESSION FILTER	680K Ohm
NTC 1: THERMISTOR 1	4 - 6 K Ohm
NTC 2: THERMISTOR 2:	4 - 6 K Ohm
AP: DRAIN PUMP:	111 Ohm
EL: HEATING ELEMENT 1050W	45.3 Ohm
EL: HEATING ELEMENT 1950W	20.5 Ohm
MO: MOTOR	
T1: THERMOSTAT, OVERHEATING (HEATER)	
T2: THERMOSTAT, OVERHEATING (HEATER)	
FB: FLOAT SWITCH	
DB: DOOR SWITCH	
CI: COMMUNICATIONS INTERFACE	



## SERVICE MENU

TURN OFF POWER (S1)  
 WAIT FOR AT LEAST 5 SEC  
 HOLD S2  
 TURN ON POWER (S1)  
 PRESS S2 5 TIMES TO ENTER SERVICE MENU

PRESS STOP (S3) TO CHANGE MENU STEP  
 ROTATE DIAL TO CHANGE IN STEP  
 PRESSING START (S2) STORES AND EXITS SERVICE MENU

## USER SETTINGS MENU

TURN OFF POWER (S1)  
 WAIT FOR AT LEAST 5 SEC  
 HOLD S3  
 TURN ON POWER (S1)  
 PRESS S3 5 TIMES TO ENTER MENU

## CONNECTOR FOR COIN METER

If coin meter is selected CM1  
 and CM4 needs to be closed to  
 start the machine  
 (default closed with jumper)

BLACK	CM1	FROM CONTROL UNIT
BROWN	CM2	PHASE
BLUE	CM3	NEUTRAL
BLACK	CM4	FROM CONTROL UNIT
BLUE	CM5	RESET (FROM MOTOR)
YELLOW-GREEN	CM6	GROUND

2011-07-07

CIRCUIT DIAGRAM TD70.C

80 902 58 - 00

This document must not be copied without  
 our written permission, and the contents  
 thereof must not be imparted to a third party  
 nor be used for any unauthorized purpose.  
 Contravention will be prosecuted.  
 Askö Appliances AB