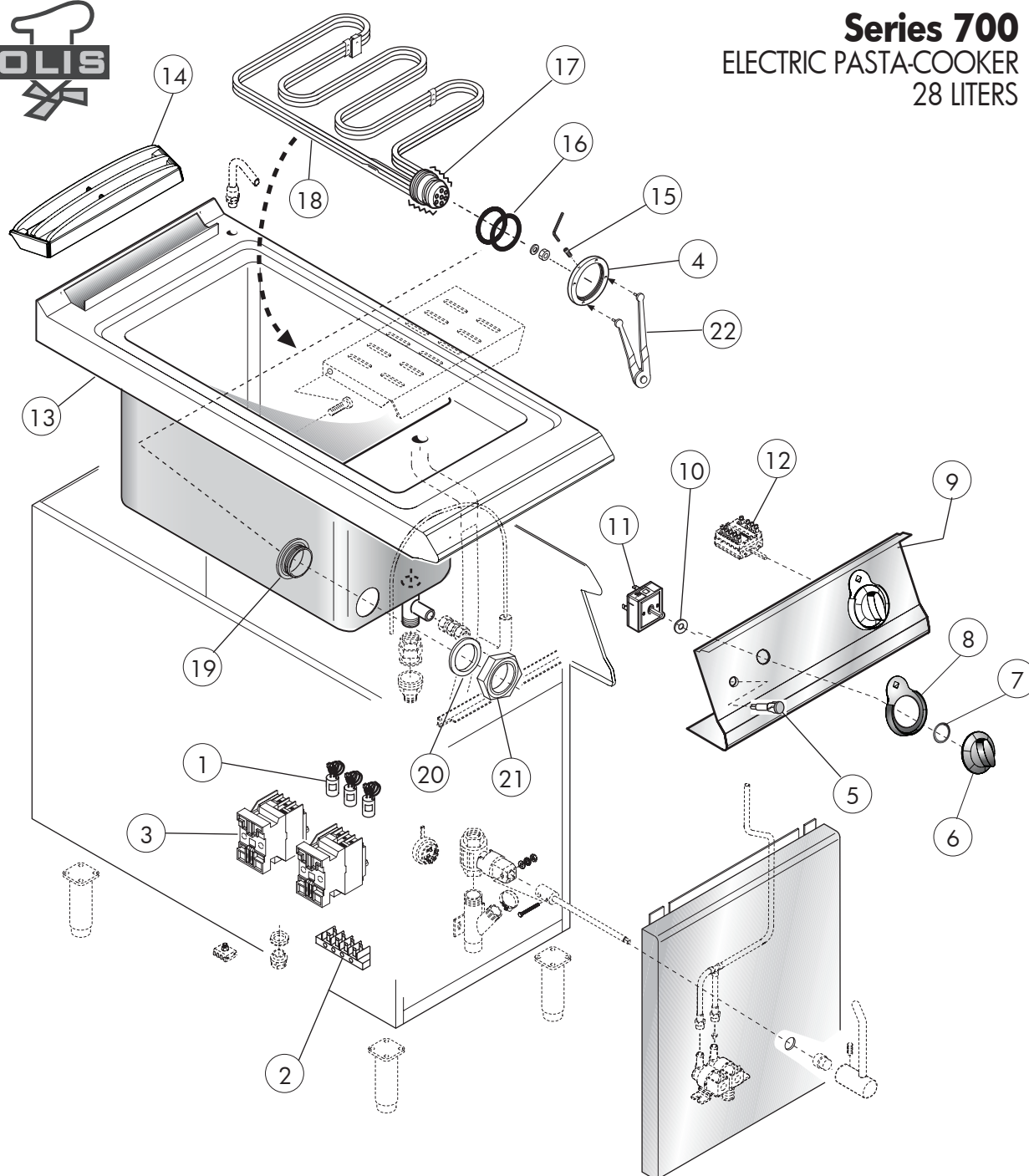




Series 700 ELECTRIC PASTA-COOKER 28 LITERS



POS.	CODE	PIECES	DESCRIPTION
1	MA1984000	3	FILTER ANTIJAMMING
2	CR0588170	1	TERMINAL BOARD
3	MACM187300	1	REMOTE CONTROL SWITCH
4	MACM021600	1	METAL RING
5	CR0587500	1	PILOT LAMP
6	CR0794350	1	REGULATOR KNOB
	CR0794340	1	SELECTOR KNOB
7	BN2519490	2	GASKET
8	CR0794170	2	UNDER KNOB "FRONT"
9	CR0791940	1	DASHBOARD
10	CR0587650	1	GASKET
11	MACM293900	1	ENERGY REGULATOR
12	CR0581810	1	FRONT PANEL ENCODER
13	CR0791900	1	PLANE AND TANK ASSEMBLY
14	CR0582070	1	FLUE GRID

15	MA15119299	1	GRUB SCREW
16	MACM099200	1	SEAL RING
17	MACM200100	1	FAT CLASS "H1"
18	CR0731030	1	HEATING ELEMENT
19	CR0582120	1	BUSH HEATING ELEMENT
20	CR0582140	1	SEAL RING
21	CR0582130	1	NUT
22	MA52185099	1	COMPASS KEY