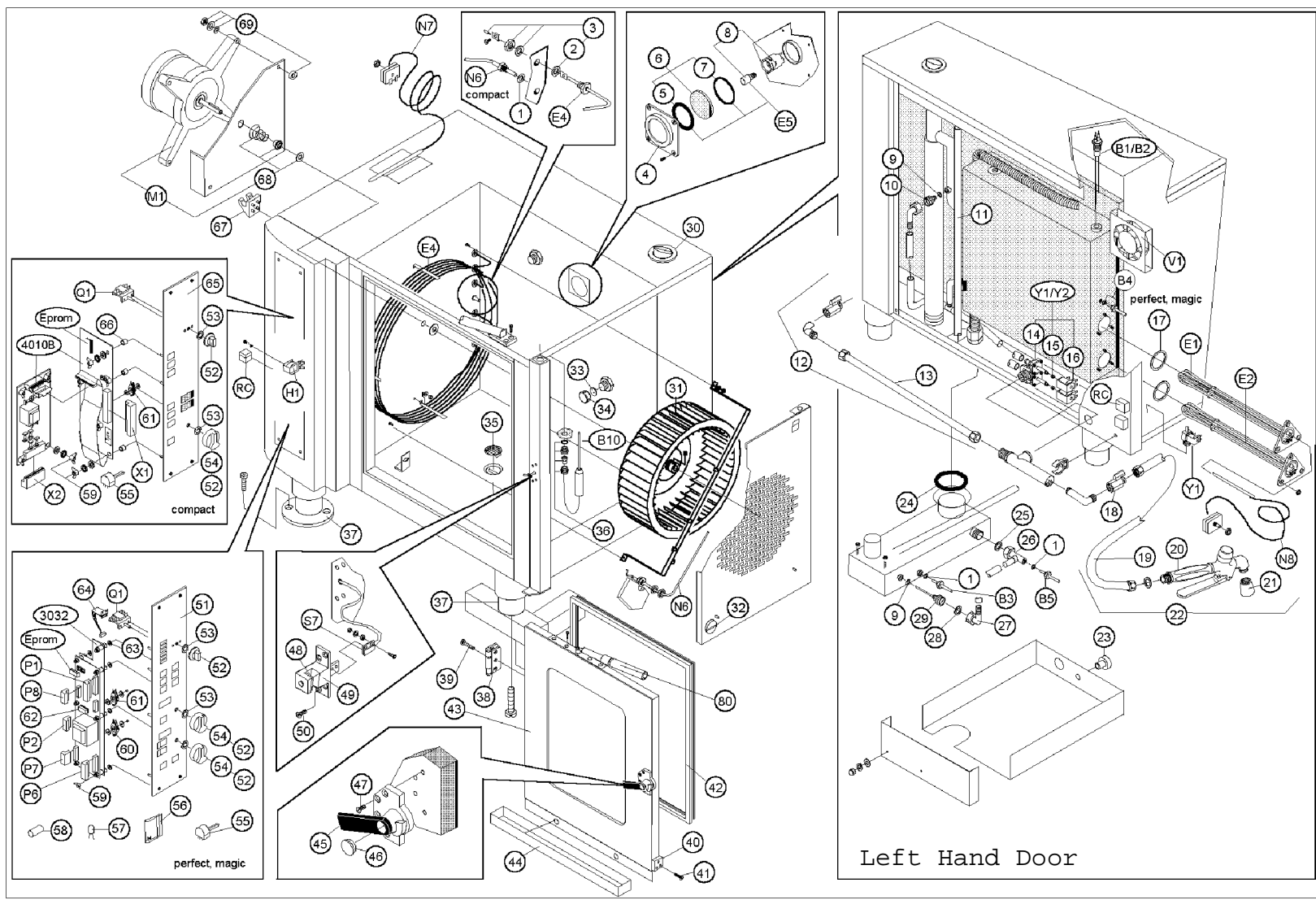


Right hand closing door**Parts list**

Pos.-No.	Designation	Item number
1	Flat seal Ø10xØ19x2 B1 - B5, N6	6005016
2	Flat seal convection heating	6005055
3	Assembly set for tubular heating element	5007022
4	Cover for oven lamp	5005020
5	Flat seal Ø 59x70 for oven lamp	5005021
6	Glass cover for oven lamp	5005022
7	O-Ring 59,6x5,33	6005013
8	Socket with bulb 25 W	5005016
9	O-Ring	6005062
10	Injection nozzle Filling of steam generator	2000027
11	Cable sleeve OD10.10 (shorten if necessary)	2006031
14	Double solenoid valve-body	5001057
15	Spring for solenoid valve-solenoid	5001074
16	Solenoid for solenoid valve	5001066
17	O-Ring for immersion heating element	6005015
18	Ball valve	6006074
19	Shower hose 2,05 m	7002070
20	Handshower	6005005
21	Shower head	6005006
22	Handshower set for OD6.10/10.10	3007001
23	Knurled nut for condenser casing	8004023
24	O-Ring 59,6x5,33 for condenser	6005069
25	Flat seal	6005056
26	Gauge pipe OD	2000022
27	Plastic elbow	6006076
28	Seal for plastic elbow	6005057
29	Injection nozzle condenser	2000026
30	Membrane socket bush Ø=60	6005048
31	Fan wheel 355x114	6000056
32	Quick connector for suction panel	6002100
33	Seal Ø =45 for steam generator drain cap R1 ¼	6005074
34	steam generator drain cap R1 ¼	6006081
35	Drain sieve	6005024
36	Seal set CTC	5002061
37	Adjustable foot	6004044
37	Adjustable pedestal with screwed flange plate for marine version	6004039
37	Foot 2 for marine version on stand	2607779

38	Hinge right upper	6002101
39	Upper hinge bracket table top units	2004131
40	Hinge right lower	6002102
41	Lower hinge bracket table top units	2004132
42	Hygienic door gasket OD10.10	7001017
43	Door OD10.10 RA complete	2508323
44	Door trip tray	2004028
45	Door latch right	6002053
46	Plastic plug for door latch	6002056
47	Fixing set for door latch	6002043
48	Plastic inset for door catch right	6002045
49	Door catch right	6002093
50	Fixing set for door catch	6002047
51	Front laminate piece ODP grey-red	6009286
51	Front laminate piece ODM grey-red	6009294
52	Knob OD	6003010
53	Seal	5009108
54	Knob MKN	6003023
55	Potentiometer	5009095
56	Conductor clip	5009009
57	Bulb for key back lighting	5003046
58	Push button cap yellow	5009085
59	Wing nut M4	8004024
60	Spring loaded knob with continuous op.	5009082
61	Spring loaded knob without continuous op.	5009083
62	RAM 8K	5009109
63	Silicon washer 10x4 (2x per bolt)	6005054
64	OD magic eye - infrared module	5009043
65	Front laminate piece ODC grey-red	6009280
66	Spacer (Electronic mounting)	8009048
67	Hand shower holder	2002042
68	Set of seals for motor spindle open	5008067
69	Fixing set for 3-phase AC-motor open	5008066
80	Door stop	6002022

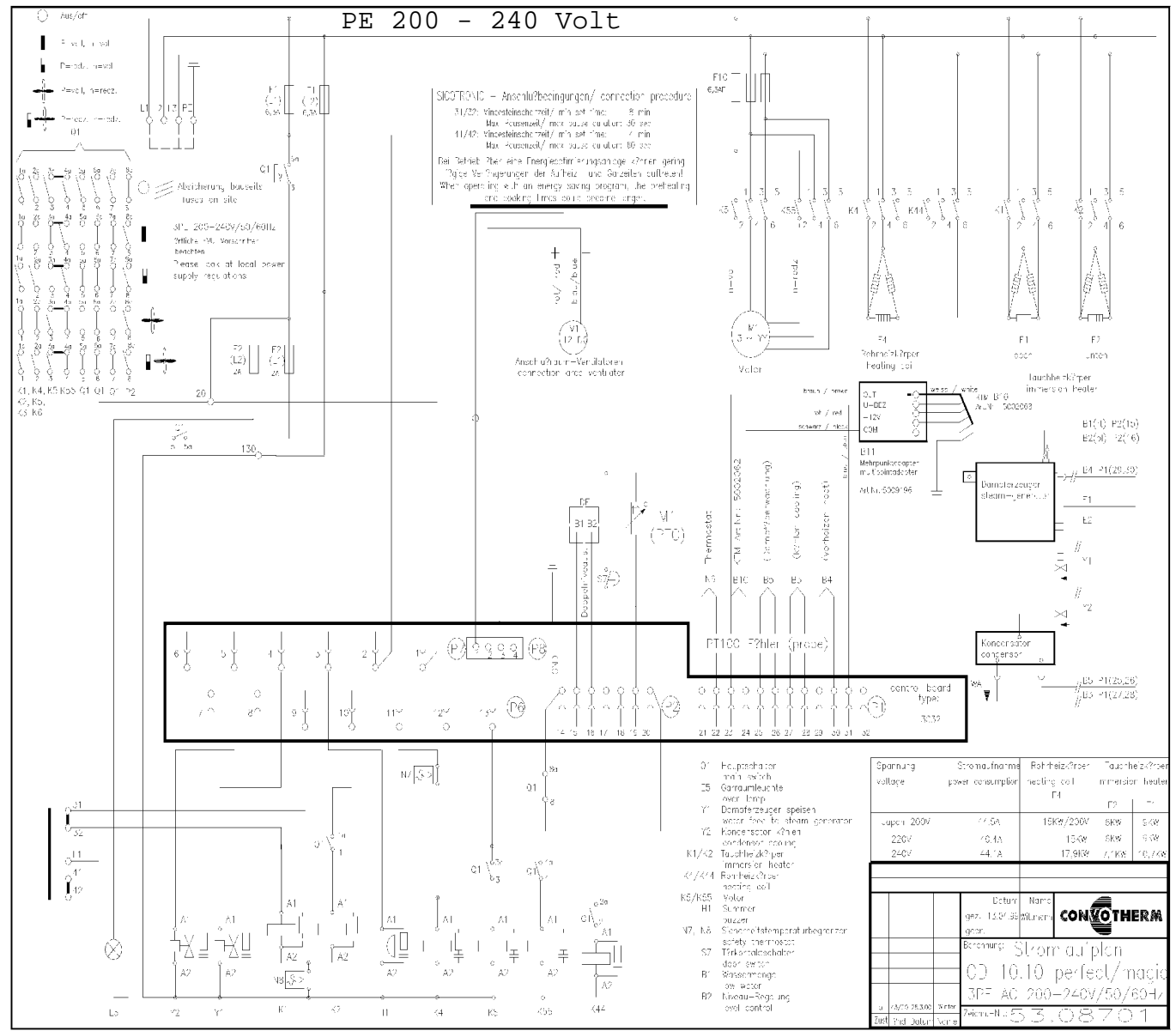


Left hand closing door**Parts list**

Pos.-No.	Designation	Item number
1	Flat seal Ø10xØ19x2 B1 - B5, N6	6005016
2	Flat seal convection heating	6005055
3	Assembly set for tubular heating element	5007022
4	Cover for oven lamp	5005020
5	Flat seal Ø 59x70 for oven lamp	5005021
6	Glass cover for oven lamp	5005022
7	O-Ring 59,6x5,33	6005013
8	Socket with bulb 25 W	5005016
9	O-Ring	6005062
10	Injection nozzle Filling of steam generator	2000027
11	Cable sleeve OD10.10 (shorten if necessary)	2006031
12	Handshower set OD10.10 for Left hand closing door	3007030
13	Shower hose for Left hand closing door	7002076
14	Double solenoid valve-body	5001057
15	Spring for solenoid valve-solenoid	5001074
16	Solenoid for solenoid valve	5001066
17	O-Ring for immersion heating element	6005015
18	Ball valve	6006074
19	Shower hose 2,05 m	7002070
20	Handshower	6005005
21	Shower head	6005006
22	Handshower set for OD10.10	3007001
23	Knurled nut for condenser casing	8004023
24	O-Ring 59,6x5,33 for condenser	6005069
25	Flat seal	6005056
26	Gauge pipe OD	2000022
27	Plastic elbow	6006076
28	Seal for plastic elbow	6005057
29	Injection nozzle condenser	2000026
30	Membrane socket bush Ø=60	6005048
31	Fan wheel 355x114	6000056
32	Quick connector for suction panel	6002100
33	Seal Ø =45 for steam generator drain cap R1 ¼	6005074
34	steam generator drain cap R1 ¼	6006081
35	Drain sieve	6005024
36	Seal set CTC	5002061
37	Adjustable foot	6004044

37	Adjustable pedestal with screwed flange plate for marine version	6004039
37	Foot 2 for marine version on stand	2607779
38	Hinge for door catch left	6001032
39	Fixing set for hinge	6001033
40	Teflon guide for left hand closing door	2006009
41	Fixing set for teflon guide	2006004
42	Hygienic door gasket OD10.10	7001017
43	Door OD10.10 LA complete	2508324
44	Door trip tray	2004050
45	Door latch left	6002048
46	Plastic plug for door latch	6002056
47	Fixing set for door latch	6002043
48	Plastic inset for door catch left	6002060
49	Door catch left	6002049
50	Fixing set for door catch	6002047
51	Front laminate piece ODP grey-red	6009286
51	Front laminate piece ODM grey-red	6009294
52	Knob OD	6003010
53	Seal	5009108
54	Knob MKN	6003023
55	Potentiometer	5009095
56	Conductor clip	5009009
57	Bulb for key back lighting	5003046
58	Push button cap yellow	5009085
59	Wing nut M4	8004024
60	Spring loaded knob with continuous operat.	5009082
61	Spring loaded knob without continuous op.	5009083
62	RAM 8K	5009109
63	Silicon washer 10x4 (2x per bolt)	6005054
64	OD magic eye - infrared module	5009043
65	Front laminate piece ODC grey-red	6009280
66	Spacer (Electronic mounting)	8009048
67	Hand shower holder	2002042
68	Set of seals for motor spindle open	5008067
69	Fixing set for 3-phase AC-motor open	5008066
80	Door stop	6002022

PE 200 - 240 Volt

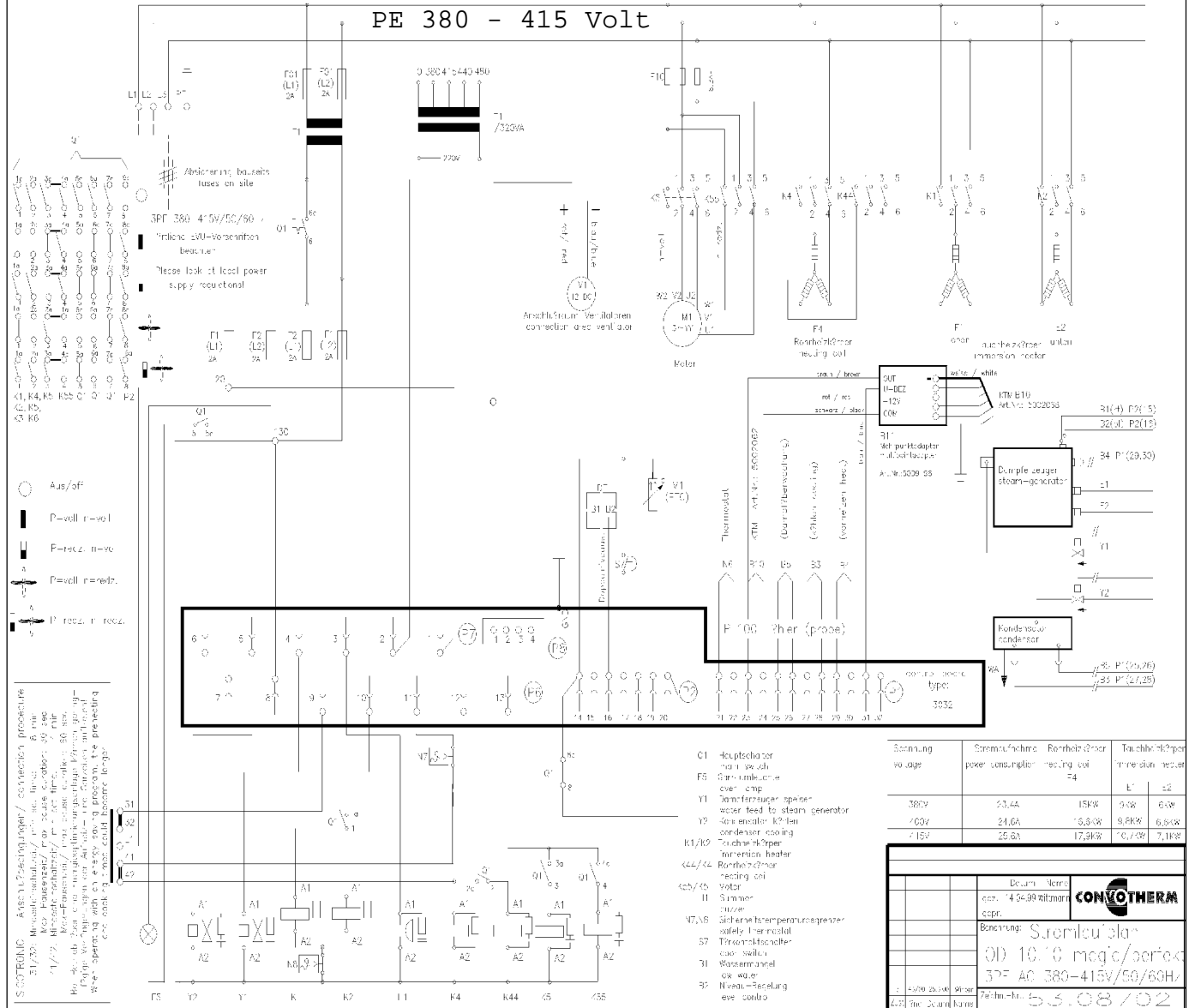


Parts list


Pos.-No.	Designation	Item number
3032	Electronic control 3032 with Eprom	5009029
3032	Eprom V 8.1x control 3032 with CTC	5009182
20	Terminal block 4mm ²	4006023
31	Terminal block 4mm ²	4006023
32	Terminal block 4mm ²	4006023
41	Terminal block 4mm ²	4006023
42	Terminal block 4mm ²	4006023
130	Terminal block 4mm ²	4006023
PE	Ground terminal 4mm ²	4006026
B1	Water level probe 235/ 185	5009065
B2	Water level probe 235/ 185	5009065
B10	Multi point CTC probe	5002068
B10	Seal set for CTC	5002061
B10	CTC probe teflon	5002062
B10	Seal set for CTC	5002061
B11	4 point CTC probe adapter	5009196
B3	Temperature probe PT 100	5009052
B4	Temperature probe PT 100	5009052
B5	Temperature probe PT 100	5009052
E1	Immersion heating element 9kW/220V	5007071
E1	O-ring f. immersion heating element	6005015
E2	Immersion heating element 6KW220V	5007062
E2	O-ring f. immersion heating element	6005015
E4	Heating element 15KW/220V	5007036
E4	Fitting for heating element	5007022
E5	Lamp with holder 25W/220V	5005016
E5	Lamp 25 W/220V temp. resistant	5005045
F1	Terminal block 10mm ²	4004010
F2	Terminal block 10mm ²	4004010
F1	Glass fuse 6. 3A	4005068
F2	Glass fuse 6. 3A	4005068
F1	Terminal block 10mm ²	4004010
F2	Terminal block 10mm ²	4004010
F1	Glass fuse 2A	4005066
F2	Glass fuse 2A	4005066
F10	Terminal block 10mm ²	4004008
F10	Glass fuse 6. 3AF	4005069

H1	Buzzer 230V	4003050
K1	Contactactor 240V 50-60Hz 39A	4001030
K2	Contactactor 240V 50-60Hz 39A	4001030
K4	Contactactor 240V 50-60 Hz 54A	4001041
K44	Contactactor 240V 50-60 Hz 54A	4001041
K5	Contactactor 240V 50-60Hz 22A	4001020
K55	Contactactor 240V 50-60Hz 22A	4001020
L1	Terminal block 16mm ²	4006040
L2	Terminal block 16mm ²	4006040
L3	Terminal block 16mm ²	4006040
PE	Ground terminal 16mm ²	4006039
M1	AC motor 6/4pole 0,3KW/230V	5008059
M1	Mounting set for AC motor	5008066
N6	Oven probe OD ' L' shaped	5001023
N7	Safety thermostat convection OD	5001029
N8	Safety thermostat immersion	5001026
P1	Terminal block 12pol 2.5mm ²	4006003
P2	Terminal block 7pol 2.5mm ²	4006002
P6	Terminal block 7pol 2.5mm ²	4006021
P7	Terminal block 6pol 2.5mm ²	4006022
Q1	Rorary switch 45 o ODP/ODM	5003023
RC	Interference filter f. solenoid valve	4001075
RC	Interference filter f. contactor	4001078
S7	Door magnet switch	5003075
S7	Door magnet UL	5003076
V1	Aux. Fan DC 4112NX OD	5008068
Y1	Double solenoid valve 220V/50-60Hz	5001056
Y2	Double solenoid valve 220V/50-60Hz	5001056
Y1	Solenoid valve DN10 230-240V	5001058
Y2	Solenoid valve DN10 230-240V	5001058

PE 380 - 415 Volt



Sampling wage	Strenuous physical work	Technical training cost =4	Technical wages	
			1	2
3800	53.44	15%	5.48	6.38
4000	24.64	16.8%	6.88	6.84
4150	25.64	17.9%	7.04	7.18

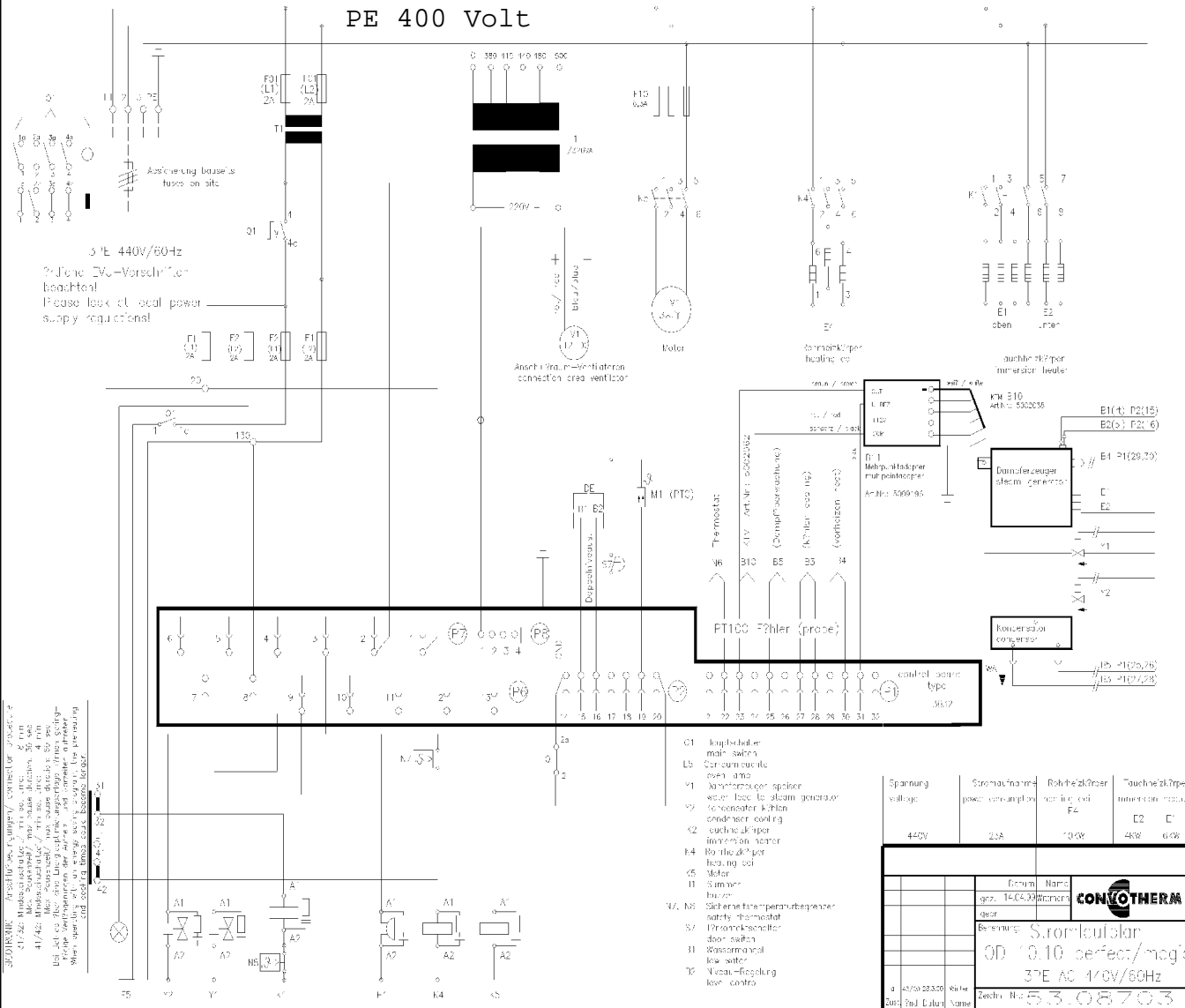
		Dokument-Nr.		 CONVOETHERM	
		vom: 14.06.2010 Uhrzeit:			
		Benennung: Suemiloblan			
		ID: 10.130 meg/serie 37° AC 380-415V/50/60Hz			
1. 4000 25.000 9000 4.000		7.10.11.11.11 53.08/02			

Parts list

Pos.-No.	Designation	Item number
3032	Electronic control 3032 with Eprom	5009029
3032	Eprom V 8.1x control 3032 with CTC	5009182
20	Terminal block 4mm ²	4006023
31	Terminal block 4mm ²	4006023
32	Terminal block 4mm ²	4006023
41	Terminal block 4mm ²	4006023
42	Terminal block 4mm ²	4006023
130	Terminal block 4mm ²	4006023
PE	Ground terminal 4mm ²	4006026
B1	Water level probe 235/ 185	5009065
B2	Water level probe 235/ 185	5009065
B10	Multi point CTC probe	5002068
B10	Seal set for CTC	5002061
B10	CTC probe teflon	5002062
B10	Seal set for CTC	5002061
B11	4 point CTC probe adapter	5009196
B3	Temperature probe PT 100	5009052
B4	Temperature probe PT 100	5009052
B5	Temperature probe PT 100	5009052
E1	Immersion heating element 9KW/220V	5007071
E1	Star terminal 4-poles	4006043
E2	Immersion heating element 6KW/220V	5007062
E2	Star terminal 4-poles	4006043
E4	Heating element 15KW/220V	5007036
E4	Fitting for heating element	5007022
E5	Lamp with holder 25W/220V	5005016
E5	Lamp 25 W/220V temp. resistant	5005045
F01	Terminal block 10mm ²	4004010
F1	Terminal block 10mm ²	4004010
F2	Terminal block 10mm ²	4004010
F01	Glass fuse 1A	4005064
F1	Glass fuse 1A	4005064
F2	Glass fuse 1A	4005064
F01	Terminal block 10mm ²	4004010
F1	Terminal block 10mm ²	4004010
F2	Terminal block 10mm ²	4004010
F01	Glass fuse 2A	4005066

F1	Glass fuse 2A	4005066
F2	Glass fuse 2A	4005066
F10	Terminal block 10mm ²	4004008
F10	Glass fuse 6. 3AF	4005069
H1	Buzzer 230V	4003050
K1	Contactor 240V 50-60HZ 22A	4001020
K2	Contactor 240V 50-60HZ 22A	4001020
K5	Contactor 240V 50-60HZ 22A	4001020
K55	Contactor 240V 50-60HZ 22A	4001020
K4	Contactor 240V 50-60HZ 39A	4001030
K44	Contactor 240V 50-60HZ 39A	4001030
L1	Terminal block 10mm ²	4006030
L2	Terminal block 10mm ²	4006030
L3	Terminal block 10mm ²	4006030
PE	Ground terminal 10mm ²	4006033
M1	AC motor 6/4pole 0,3KW/400V	5008060
M1	Mounting set for AC motor	5008066
N6	Oven probe OD ' L' shaped	5001023
N7	Safety thermostat Convection OD	5001029
N8	Safety thermostat immersion	5001026
P1	Terminal block 12pol 2.5mm ²	4006003
P2	Terminal block 7pol 2.5mm ²	4006002
P6	Terminal block 7pol 2.5mm ²	4006021
P7	Terminal block 6pol 2.5mm ²	4006022
Q1	Rorary switch 45 o ODP/ODM	5003023
RC	Interference filter f. solenoid valve	4001075
RC	Interference filter f. contacteur	4001078
S7	Door magnet switch	5003075
S7	Door magnet UL	5003076
T1	Transformer 320 VA	5002035
V1	Aux. Fan DC 4112NX OD	5008068
Y1	Double solenoid valve 220V/50-60Hz	5001056
Y2	Double solenoid valve 220V/50-60Hz	5001056
Y1	Solenoid valve DN10 230-240V	5001058
Y2	Solenoid valve DN10 230-240V	5001058

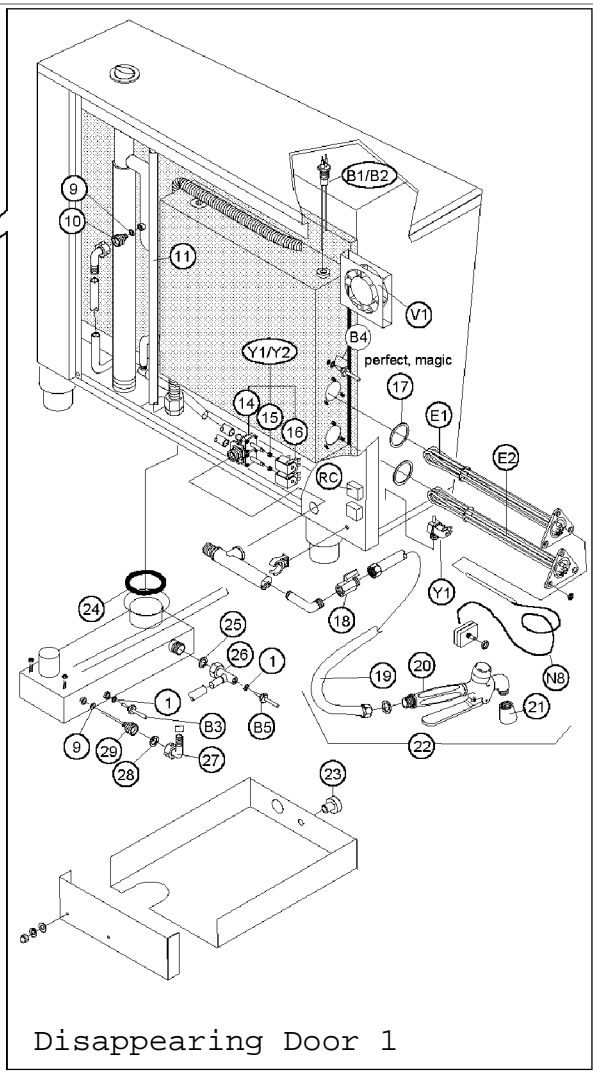
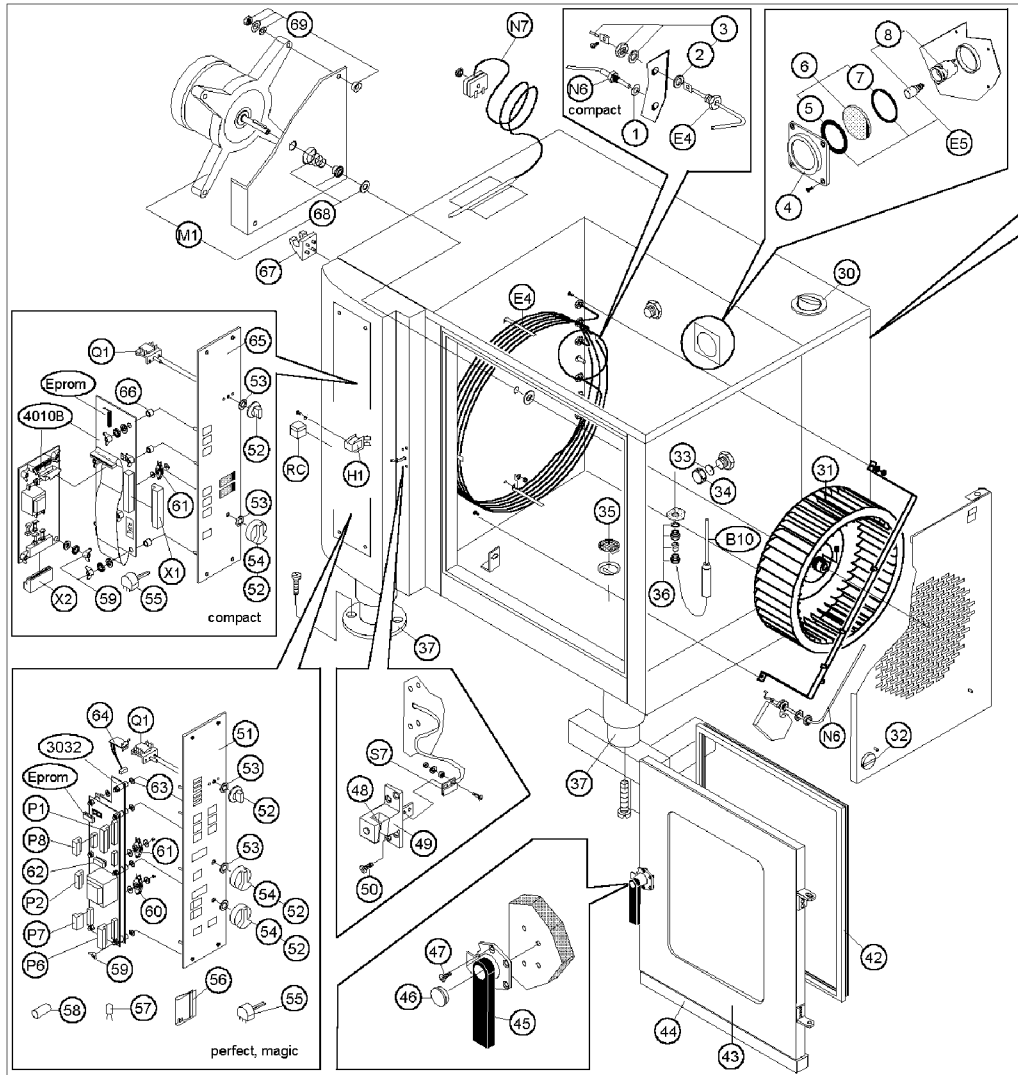
PE 400 Volt



Parts list

Pos.-No.	Designation	Item number
3032	Electronic control 3032 with Eprom	5009029
3032	Eprom V 8.1x control 3032 with CTC	5009182
20	Terminal block 4mm ²	4006023
31	Terminal block 4mm ²	4006023
32	Terminal block 4mm ²	4006023
41	Terminal block 4mm ²	4006023
42	Terminal block 4mm ²	4006023
130	Terminal block 4mm ²	4006023
PE	Ground terminal 4mm ²	4006026
B1	Water level probe 235/ 185	5009065
B2	Water level probe 235/ 185	5009065
B10	Multi point CTC probe	5002068
B10	Seal set for CTC	5002061
B10	CTC probe teflon	5002062
B10	Seal set for CTC	5002061
B11	4 point CTC probe adapter	5009196
B3	Temperature probe PT 100	5009052
B4	Temperature probe PT 100	5009052
B5	Temperature probe PT 100	5009052
E1	Immersion heating element 9KW/220V	5007071
E1	Star terminal 4-poles	4006043
E2	Immersion heating element 6KW/220V	5007062
E2	Star terminal 4-poles	4006043
E4	Heating element 15KW / 220V	5007036
E4	Fitting for heating element	5007022
E5	Lamp with holder 25W/220V	5005016
E5	Lamp 25W/220V temp. resistant	5005045
F01	Terminal block 10mm ²	4004010
F1	Terminal block 10mm ²	4004010
F2	Terminal block 10mm ²	4004010
F01	Glass fuse 2A	4005066
F1	Glass fuse 2A	4005066
F2	Glass fuse 2A	4005066
F01	Terminal block 10mm ²	4004010
F1	Terminal block 10mm ²	4004010
F2	Terminal block 10mm ²	4004010
F01	Glass fuse 1A	4005064

F1	Glass fuse 1A	4005064
F2	Glass fuse 1A	4005064
F10	Terminal block 10mm ²	4004008
F10	Glass fuse 6. 3A	4005074
H1	Buzzer 230V	4003050
K1	Contactor 240V 50-60Hz39A	4001030
K4	Contactor 240V 50-60Hz39A	4001030
K5	Contactor 240V 50-60Hz 22A	4001020
L1	Terminal block 10mm ²	4006030
L2	Terminal block 10mm ²	4006030
L3	Terminal block 10mm ²	4006030
PE	Ground terminal 10mm ²	4006033
M1	AC motor 4pole 0,4KW/400V	5008036
M1	Mounting set for AC motor	5008066
N6	Oven probe OD ' L' shaped	5001023
N7	Safety thermostat Convection OD	5001029
N8	Safety thermostat immersion OD	5001026
P1	Terminal block 12pol 2.5mm ²	4006003
P2	Terminal block 7pol 2.5mm ²	4006002
P6	Terminal block 7pol 2.5mm ²	4006021
P7	Terminal block 6pol 2.5mm ²	4006022
Q1	Rorary switch 45 o OD 4 poles	5003022
RC	Interference filter f. solenoid valve	4001075
RC	Interference filter f. contactor	4001078
S7	Door magnet switch	5003075
S7	Door magnet UL	5003076
T1	Transformer 320 VA	5002035
V1	Aux. Fan DC 4112NX OD	5008068
Y1	Double solenoid valve 220V/50-60Hz	5001056
Y2	Double solenoid valve 220V/50-60Hz	5001056
Y1	Solenoid valve DN10 230-240V	5001058
Y2	Solenoid valve DN10 230-240V	5001058



Disappearing door (1)

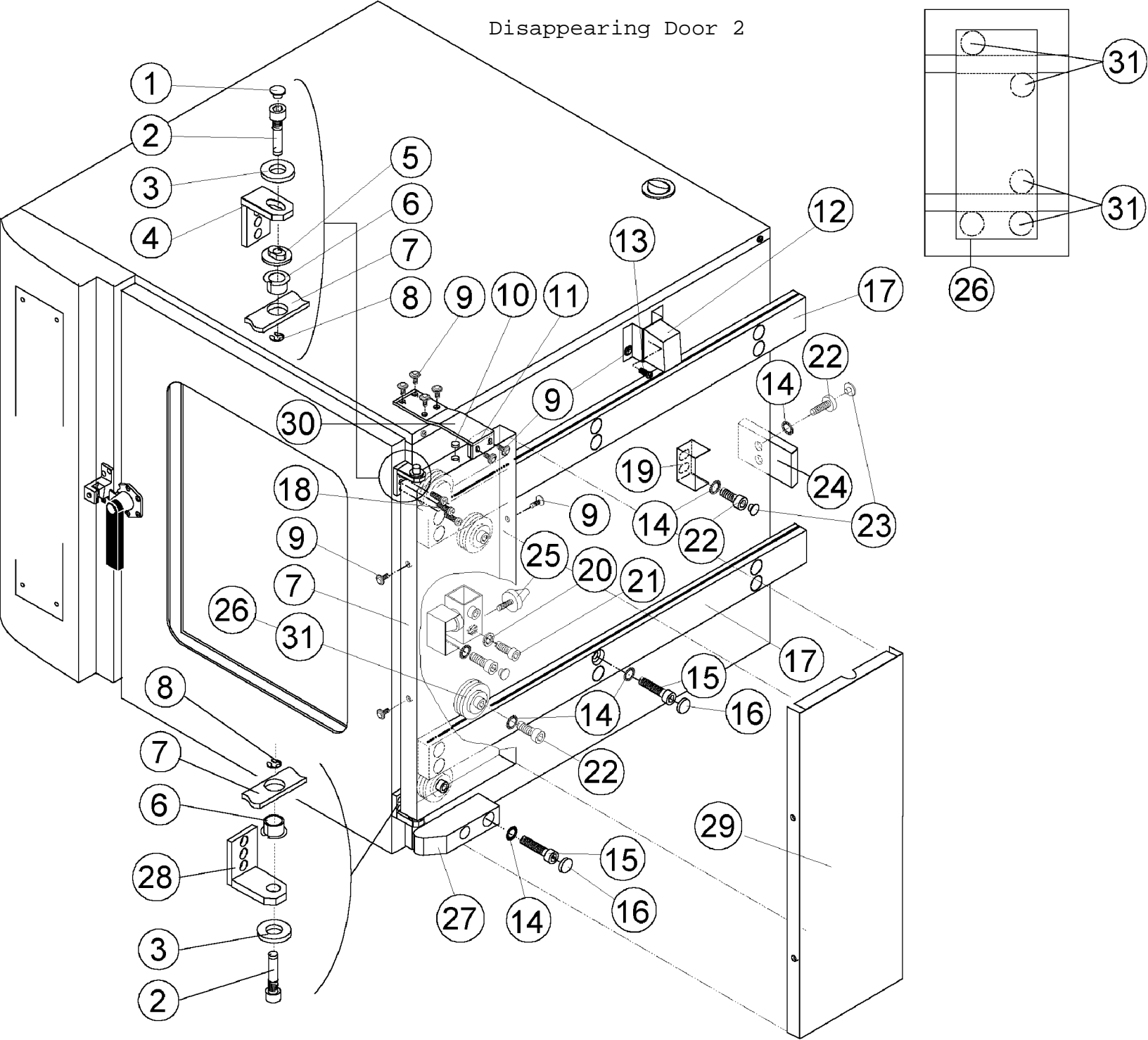
Item number: OD_10-10_p_m-VST1

Parts list

Pos.-No.	Designation	Item number
1	Flat seal Ø10xØ19x2 B1 - B5, N6	6005016
2	Flat seal convection heating	6005055
3	Assembly set for tubular heating element	5007022
4	Cover for oven lamp	5005020
5	Flat seal Ø 59x70 for oven lamp	5005021
6	Glass cover for oven lamp	5005022
7	O-Ring 59,6x5,33	6005013
8	Socket with bulb 25 W	5005016
9	O-Ring	6005062
10	Injection nozzle Filling of steam generator	2000027
11	Cable sleeve OD10.10 (shorten if necessary)	2006031
14	Double solenoid valve-body	5001057
15	Spring for solenoid valve-solenoid	5001074
16	Solenoid for solenoid valve	5001066
17	O-Ring for immersion heating element	6005015
18	Ball valve	6006074
19	Shower hose 2,05 m	7002070
20	Handshower	6005005
21	Shower head	6005006
22	Handshower set for OD6.10/10.10	3007001
23	Knurled nut for condenser casing	8004023
24	O-Ring 59,6x5,33 for condenser	6005069
25	Flat seal	6005056
26	Gauge pipe OD	2000022
27	Plastic elbow	6006076
28	Seal for plastic elbow	6005057
29	Injection nozzle condenser	2000026
30	Membrane socket bush Ø=60	6005048
31	Fan wheel 355x114	6000056
32	Quick connector for suction panel	6002100
33	Seal Ø =45 for steam generator drain cap R1 ¼	6005074
34	steam generator drain cap R1 ¼	6006081
35	Drain sieve	6005024
36	Seal set CTC	5002061
37	Adjustable foot	6004044
37	Adjustable pedestal with screwed flange plate for marine version	6004039
37	Foot 2 for marine version on stand	2607779

42	Hygienic door gasket OD10.10	7001017
43	Door OD10.10 RA complete	2508423
44	Door trip tray	2508727
45	Door latch right f. ODC/ ODP /ODM	6002053
46	Plastic plug for door latch	6002056
47	Fixing set for door latch	6002043
48	Plastic inset for door catch right	6002045
49	Door catch right	6002093
50	Fixing set for door catch	6002047
51	Front laminate piece ODP grey-red	6009286
51	Front laminate piece ODM grey-red	6009294
52	Knob OD	6003010
53	Seal	5009108
54	Knob MKN	6003023
55	Potentiometer	5009095
56	Conductor clip	5009009
57	Bulb for key back lighting	5003046
58	Push button cap yellow	5009085
59	Wing nut M4	8004024
60	Spring loaded knob with continuous operat.	5009082
61	Spring loaded knob without continuous op.	5009083
62	RAM 8K	5009109
63	Silicon washer 10x4 (2x per bolt)	6005054
64	OD magic eye - infrared module	5009043
65	Front laminate piece ODC grey-red	6009280
66	Spacer (Electronic mounting)	8009048
67	Hand shower holder	2002042
68	Set of seals for motor spindle open	5008067
69	Fixing set for 3-phase AC-motor open	5008066

Disappearing Door 2



Disappearing door (2)**Parts list**

Pos.-No.	Designation	Item number
1	Cap for M10	8009003
2	Bolt for table top units	2004117
3	Washer 10,5 A2	8005066
4	Upper support for door (table top units)	2004110
5	Crank washer	2004118
6	Sleeve	8009010
7	Trolley plate	0
8	Locking clip A2	8005039
9	MLF-screw M5x15 A2	8003030
10	Cap for Ø 12 black	8009011
11	Direction piece	2006005
12	Ball clasp 30x45 Ms	6002017
13	Oval head screw M4x10	8001024
14	Spring washer 8,4 A2	8006060
15	Hexagon head cup screw M8x35 A2	8001078
16	Cap for M8 black	8009009
17	Rail	2004100
18	Counter sunk screw M5x16 A2	8002033
19	Stop	2105501
20	Spring washer	8006040
21	Hexagon head cup screw M6x16 A2	8001073
22	Hexagon head cup screw M8x20 A2	8001074
23	Cap for M8 beige	8009002
24	Rear stop A2	2004120
25	Buffer M6	2004094
26	Roller eccentric	6002027
27	Direction block	2004114
28	Lower support (table top units)	2004111
29	Cover for trolley plate	0
30	Direction elbow	2006007
31	Concentric roller	6002028