

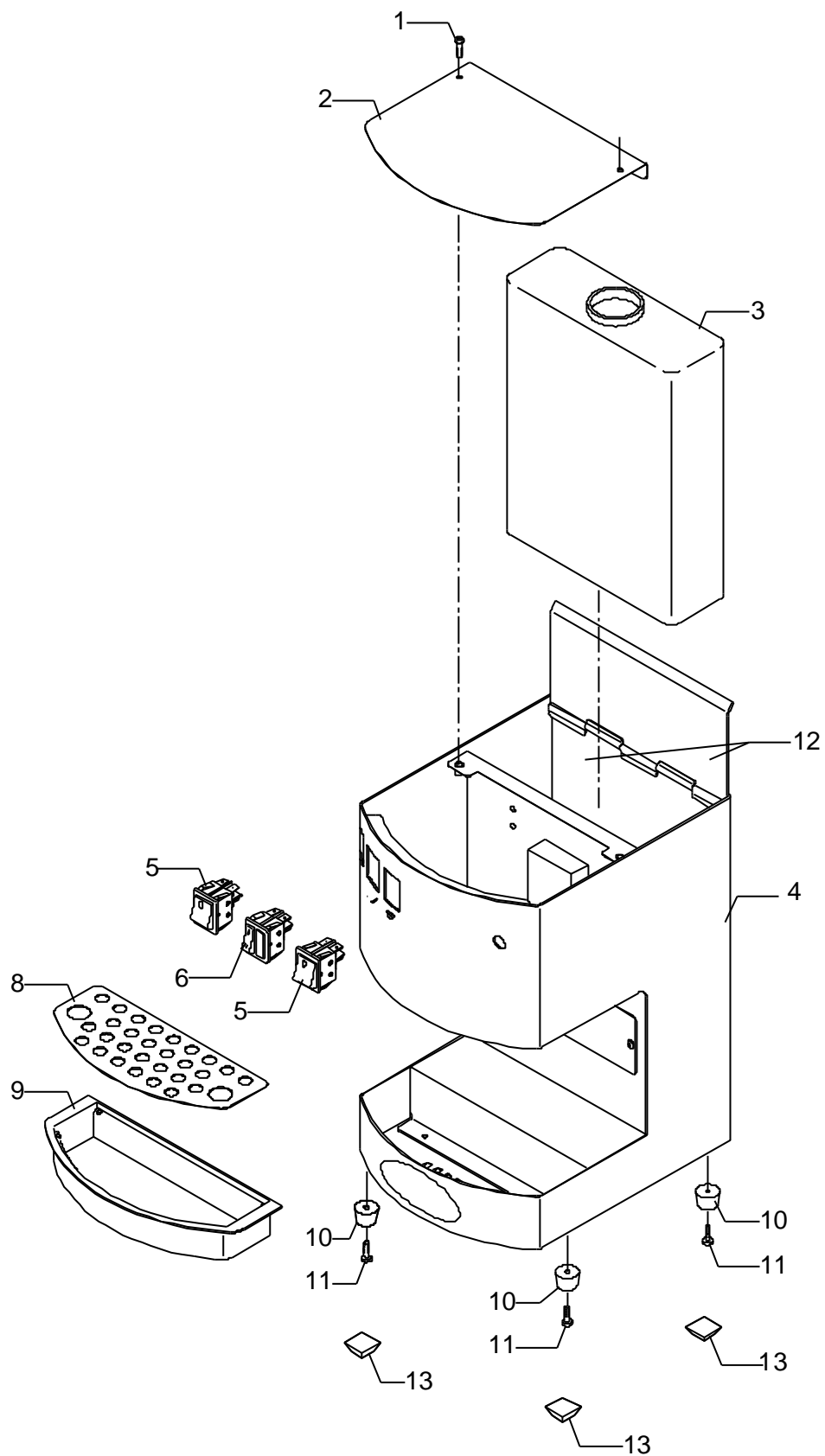


HOBBY





POS	DESCRIPTION	CODE	REFERENCE
01	SCREW TTEI M4X12	7819901	F 1700
02	CUPS-HEATER	5096305LW	-
03	TANK 3 LT. CAPACITY	7373003	-
04	PAINTED CHASSIS GREY RAL 7035	5345001VB	-
04	PAINTED CHASSIS BLACK	5345001VM	-
04	PAINTED CHASSIS RED RAL 3000	5345001VT	-
04	WHITE PAINTED CHASSIS	5345001YE	-
05	BIPOLAR SWITCH WITH LED	7633313	J 501
06	UNIPOLAR SWITCH 250V 16A WITH GREEN LAMP	7632105	-
08	DRAIN GRID	5094517	-
09	WATER TANK	7373004	-
10	ADHESIVE FEET	7474212	-
10	FEET D19 X 13 PVC	7474211	-
11	TAPPING SCREW TC D3.9 X 13 UNI 6991 FEZN	7818202	-
12	COMPLETE REAR PANEL	5345002	-
13	ADHESIVE FEET	7474212	-

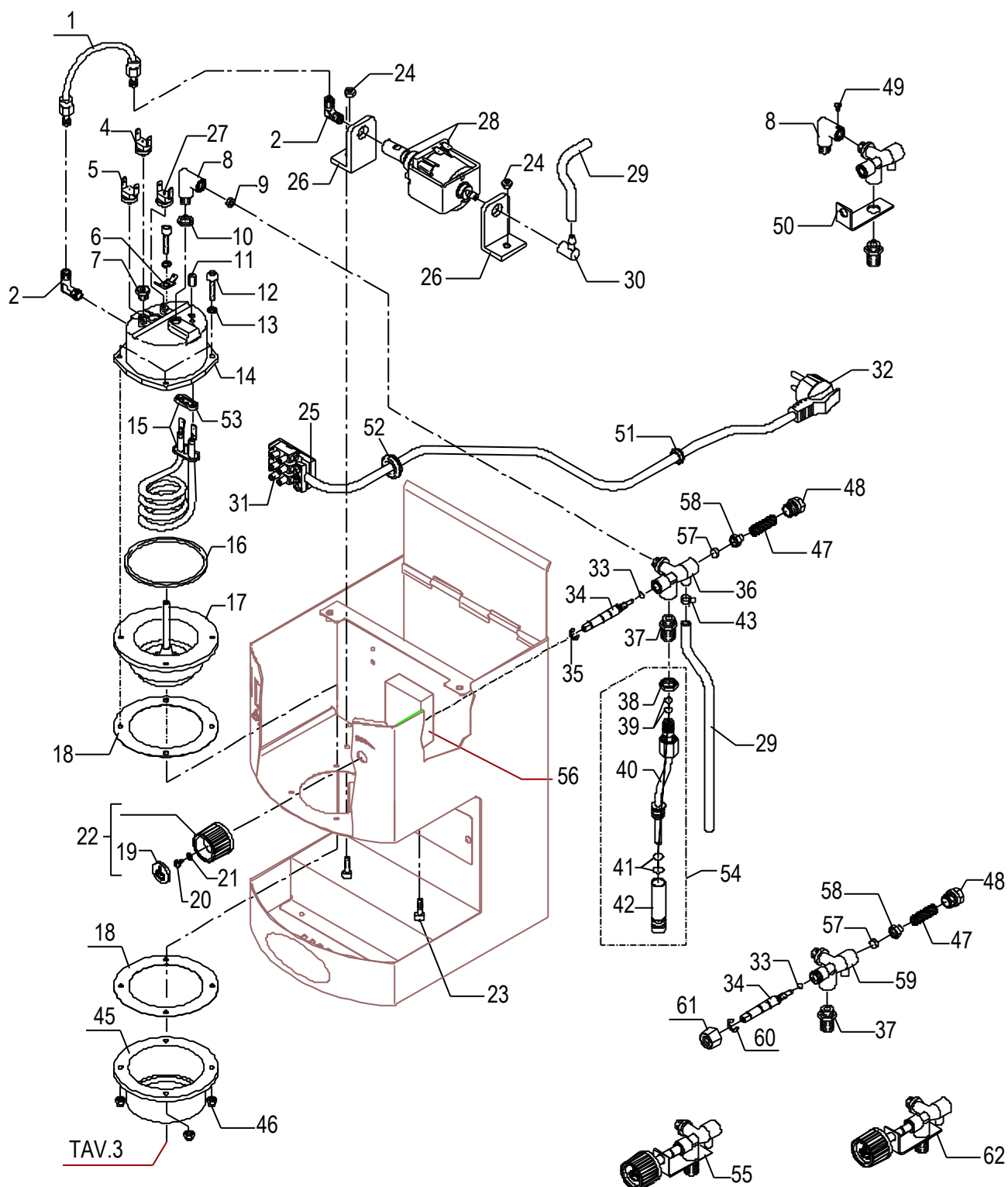




BEZZERA
dal 1901

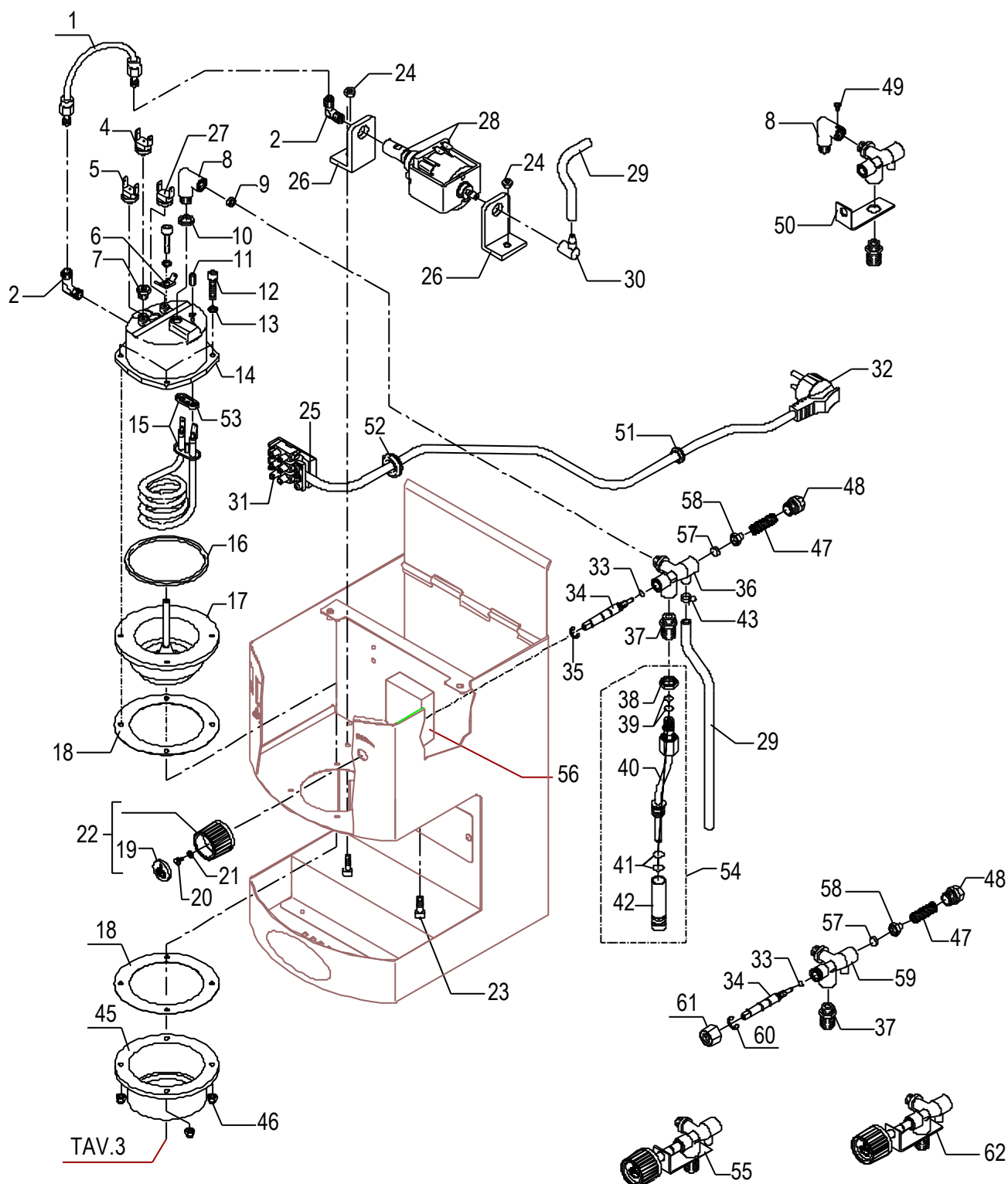
Tav. 02

POS	DESCRIPTION	CODE	REFERENCE
01	PUMP-BOILER HOSE	5194510LL	-
02	UNION ELBOW 1/8"G	7303001	F 1141
04	THERMIC SAFETY DEVICE 250V 118°C AUTOMATIC (UP TO30/09/05)	7634812	-
04	THERMIC SAFETY DEVICE 250V 140°C AUTOMATIC (FROM 01/10/05)	7634815	-
05	THERMIC SAFETY DEVICE 250V 162°C MANUAL	7634814	-
06	DOUBLE FASTON 90° HOLE D6.3	7615002	J 738
07	PLUG 1/8"G ES.12 H10 HOLE M4 OT	5226411	-
08	UNION ELBOW 1/8"G X M10	5301514	-
09	GASKET D8.5 X 5 X 3.2 PTFE	5494001	J 464/3
10	WASHER D10 X 2 COPPER	5221858	J 151
11	SPACER M4 H11	5222210	-
12	SCREW TCEI M5X25 UNI 5931 A2	7816021	-
13	NOTCHED WASHER D5 DIN 6798A A2	7814002	F 1344
14	UPPER BOILER D70 H59 OT	5283023	-
15	HEATING ELEMENT 1100W 120V WITH GASKET	5721201	-
15	HEATING ELEMENT 1100W 220/230V WITH GASKET	5722424	-
15	HEATING ELEMENT 1100W 240V WITH GASKET	5722428	-
16	OR GASKET 177 VITON	7496060	-
17	BOTTOM BOILER D102 OT	5283021LL	-
18	GASKET D103 X 73 X 0.5 ASBESTOS FREE	5492023	-
19	STEAM PLUG D21	5373901	LI 6V
20	SCREW TCI M4X10 UNI 6107 OT	7816205	F 1573
21	WASHER Ø 4	7814001	-
22	COMPLETE STEAM KNOB	5973001	LI 6
23	SCREW TCEI M5X12 UNI 5931 A2	7816001	A 121
24	NUT M5 UNI 5587 OT	7821404	F 740
25	CLAMP HOUSING	7370502	-
26	VIBRATION-DAMPING	7470602	LI 41
27	THERMIC SAFETY DEVICE 250V 95°C AUTOMATIC	7634808	-
28	VIBRATION PUMP EAP5 120V 50/60Hz	7731011	-
28	VIBRATION PUMP EAP5 230V 50HZ	7731009	-
28	VIBRATION PUMP EAP5 240V 50/60Hz	7731014	-
29	HOSE D6 L=440MM SILICONE	5194517	-
30	RUBBER-HOLDER FITTING	7303006	LI 64
31	CLAMP	7612508	-
32	CABLE WITH AUSTRALIAN PLUG	7552001	J 720
32	CABLE WITH SHUKO PLUG	7555001	CAVO 27
32	CABLE WITH USA PLUG	7551001	CAVO 21
32	CABLE WITH ENGLISH PLUG	7554001	J 822
33	OR GASKET D5 X 1.8 VITON	7496065	-
34	SHAFT D8 X 65.2 OT	5220202	-
35	RING D6 UNI 7434 R150	7810606	-
36	TAP BODY	5283025	-
37	FITTING M12 X M13 H23 OT	5225251	-
38	NUT M13 H4 OT	5221801	F 1363
39	OR GASKET D6 X 2 VITON	7496037	LI 1
40	WATER/STEAM HOSE CHROMED	5162050CM	-
41	OR GASKET 108 VITON	7496003	M/5 2428
42	HOSE D14 X 12 X 62 OT CHROMED	5166003CM	-
43	CLAMP	7611515	-
45	COUPLING RING CHROMED FOR INSTANTANEOUS GROUP	5280506CM	-





POS	DESCRIPTION	CODE	REFERENCE
46	SELF-LOCKING NUT M5 UNI 7474 A2	7811601	-
47	TAP SPRING D0.8 X 28 AISI 302	5471528	-
48	SPRING-HOLDER PLUG OT	7305502	-
49	SCREW TCI M4X6 UNI 6107 A2	7816208	F 1219INOX
50	TAP SQUARE	5057823LW	-
51	FAIRLEAD M10V RUBBER	7613003	J 450
51	FAIRLEAD M17V 3121145 RUBBER	7613007	-
52	FAIRLEAD M15V 3211142 RUBBER	7613006	-
53	HEATING ELEMENT GASKET	7493005	-
54	ASSEMBLY COMPLETE WATER/STEAM HOSE	5966505	-
55	ASSEMBLY TAP	5964008	-
56	ADHESIVE SPONGE 55X55X20	7499904LL	-
57	GASKET D9 X 3 VITON	7497005	-
58	GASKET-HOLDER	7305005	-
59	TAP BODY (NEW)	5283034	-
60	RING D5 UNI 7434 A2	7810605	-
61	NUT M13 X 1 ES.16 H11.5 HOLE D9 OT	5221866	-
62	ASSEMBLY TAP (NEW)	5964009	-





POS	DESCRIPTION	CODE	REFERENCE
01	GASKET D68 X 54 X 6 EPDM 75SH	5493028	-
02	PLUG GASKET OF VALVE SILICONE	5493021	-
03	SPRING D6 H14 AISI 302	5471516	-
04	SHOWER-HOLDER D56 OT	5285504	-
05	SHOWER D51.9 WITH NET AISI 304 (OLD TYPE)	5470504	A 119
05	SHOWER D51.9 WITHOUT NET	5470506	-
06	SCREW TPS M5X8 UNI 5933 A2	7817603	-
07	OR GASKET 3131 VITON	7496059	-
08	GASKET D55 X 44 X 9 SILICONE	5493020	-
09	SHOWER-HOLDER D45 OT	5285503	-
10	SHOWER D32 AISI 304	5470507	A/P 171
11	SCREW TPS M4X8 UNI 5933 A2	7817602	C 624
12	JET M12 X 8.8 HOLE D1.5 OT	5223021	-
13	FILTER 2 CUPS AISI 304	5471015	-
14	FILTER 1 CUP AISI 304	5471014	-
15	FILTER-HOLDER SPRING D1.2 AISI 302	5471527	-
16	FILTER-HOLDER BODY OT CHROMED	5286003CM	-
17	ASSEMBLY HANDLE ABS GREY	5963013	H 880G
18	SPOUT 1 WAY SHORT	7288505	H 849
19	SPOUT 2 WAY SHORT	7288501	H 831
20	ASSEMBLY FILTER-HOLDER - GROUND COFFEE VERSION 2 WAY	5965518	-
21	ASSEMBLY FILTER-HOLDER - POD VERSION AND GROUND COFFEE1 WAY	5965516	-
22	RING FOR CAPSULE ADAPTER	5195502	-
23	ASSEMBLY FILTER-HOLDER POD VERSION	5965517	-
24	COFFEE-PRESS ABS	5373001	H 862
25	MEASURER ABS	5372101	H 861
26	SPRING-HOLDER RING NUT M12 X 9.5 AISI 303	5224013	-

