

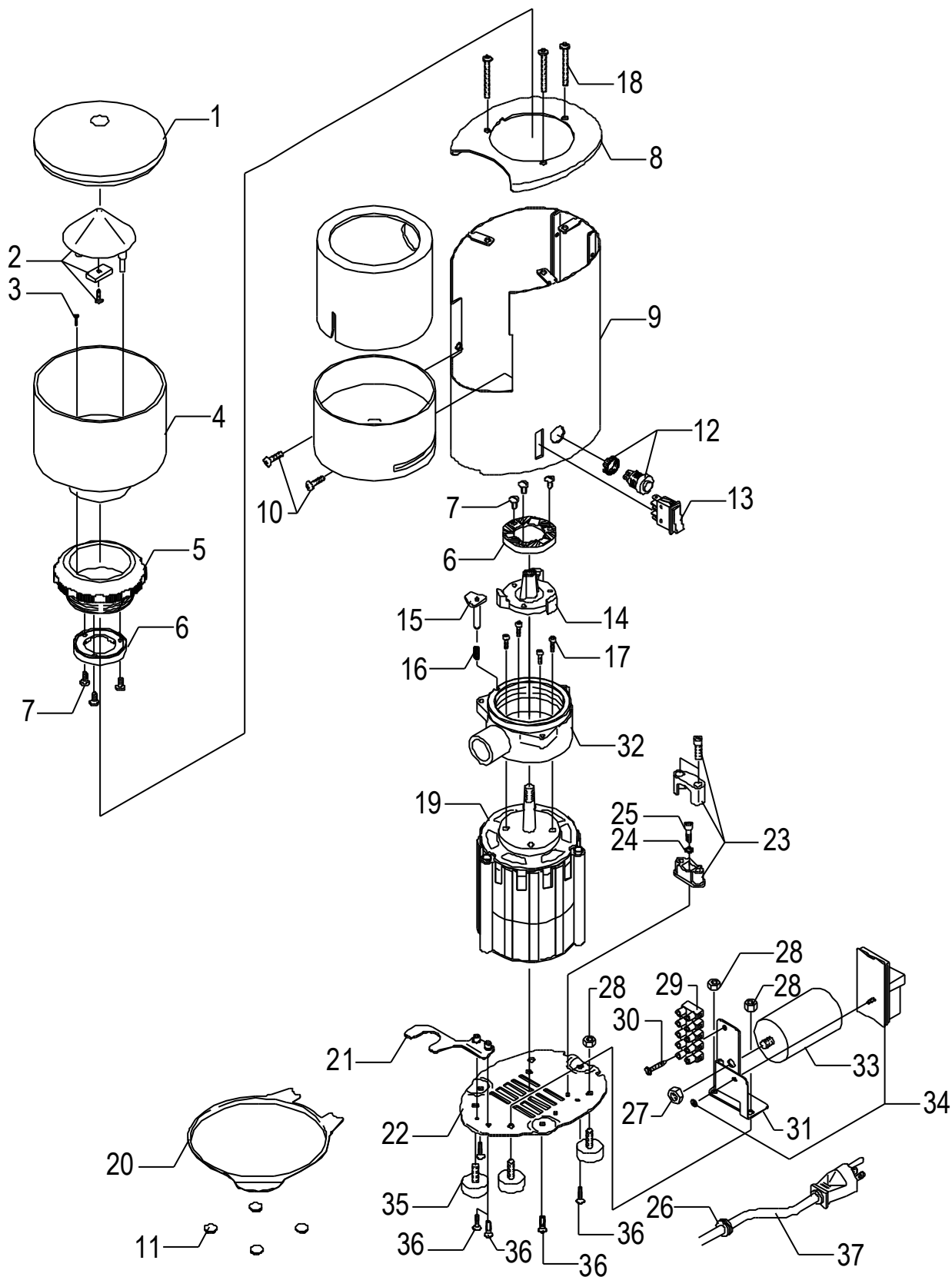


# BB004





POS	DESCRIPTION	CODE	REFERENCE
01	COVER FOR HOPPER 0,25 KG	0BDF1	DF 1
02	SAFE-FINGER CAP WITH MAGNET AND SCREW	0BEB04C	EB 04
03	SCREW TPS M3X10	0BBB47	-
04	HOPPER 0.25 KG	0BDF2	DF 2
05	REGULATOR	0BDF53	DF 53
06	GRINDSTONE COUPLE	0BDF8	DF 8
07	SCREW TC M4X8	0BDF91	DF 91
08	STAINLESS STEEL COVER	5075742LW	-
08	BLACK COVER	5015742VM	-
08	RED COVER	5015742VT	-
09	AUTOMATIC STEEL CHASSIS WITH LOGO	5346321LL	-
09	AUTOMATIC STEEL CHASSIS WITHOUT LOGO	5346322LL	-
09	AUTOMATIC BLACK CHASSIS WITH LOGO	5346325LL-VM	-
09	AUTOMATIC BLACK CHASSIS WITHOUT LOGO	5346326LL-VM	-
09	AUTOMATIC RED CHASSIS WITH LOGO	5346325LL-VT	-
09	AUTOMATIC RED CHASSIS WITHOUT LOGO	5346326LL-VT	-
09	MANUAL STEEL CHASSIS WITH LOGO	5346323LL	-
09	MANUAL STEEL CHASSIS WITHOUT LOGO	5346324LL	-
09	MANUAL BLACK CHASSIS WITH LOGO	5346327LL-VM	-
09	MANUAL BLACK CHASSIS WITHOUT LOGO	5346328LL-VM	-
09	MANUAL RED CHASSIS WITH LOGO	5346327LL-VT	-
09	MANUAL RED CHASSIS WITHOUT LOGO	5346328LL-VT	-
10	SCREW TTEI M4X8	7819908	-
11	ADHESIVE RUBBER TOP	7999904	J 609
12	BLACK PUSH BUTTON FOR COFFEE GRINDER STARTING	7635101	J 685
13	SWITCH	7633319	-
14	FAN	0BDF90	DF 90
15	CATCH STUD	0BDF6	DF 6
16	SPRING FOR CATCH STUD	0BDF5	DF 5
17	SCREW TCCE M4X14	0BDF85	DF 85
18	SCREW M5 X 16	0BBB46	-
19	MOTOR 110V	0BDF15110	DF 15110
19	MOTOR 220V	0BDF15	DF 15
19	MOTOR 240V	0BDF15240	DF 15240
20	COFFEE TRAY WITH LOGO	5070651LW	-
20	COFFEE TRAY WITHOUT LOGO	5070652LW	-
21	FORK	5079909LW	-
22	BOTTOM	5033702LW	-
23	COMPLETE CABLE LOCK	0BEB0890B0	EB 0890B0
24	WASHER D4 DIN 6798A A2	7814001	-
25	SCREW TTEI M4X12 ISO 7380 A2 INOX	7819901	F 1700
26	FAIRLEAD M17V 3121145 RUBBER	7613007	-
27	NUT M8	0BMQ45/8	MQ 45/8
28	NUT M6	0BBB49	-
29	CLAMP	0BEB096	-
30	SCREW M2,9 X 16	0BMQ55	MQ55
31	ELECTRIC PARTS SUPPORT	5038415LW	-
32	THREADED GLASS	0BDF84	DF 84
33	CONDENSER 110V	0BDF75110	DF 75110
33	CONDENSER 220V	0BDF75	DF 75
33	CONDENSER 240V	0BDF75240	DF 75240
34	ELECTRONIC CARD 110V	7665504	J 693/110

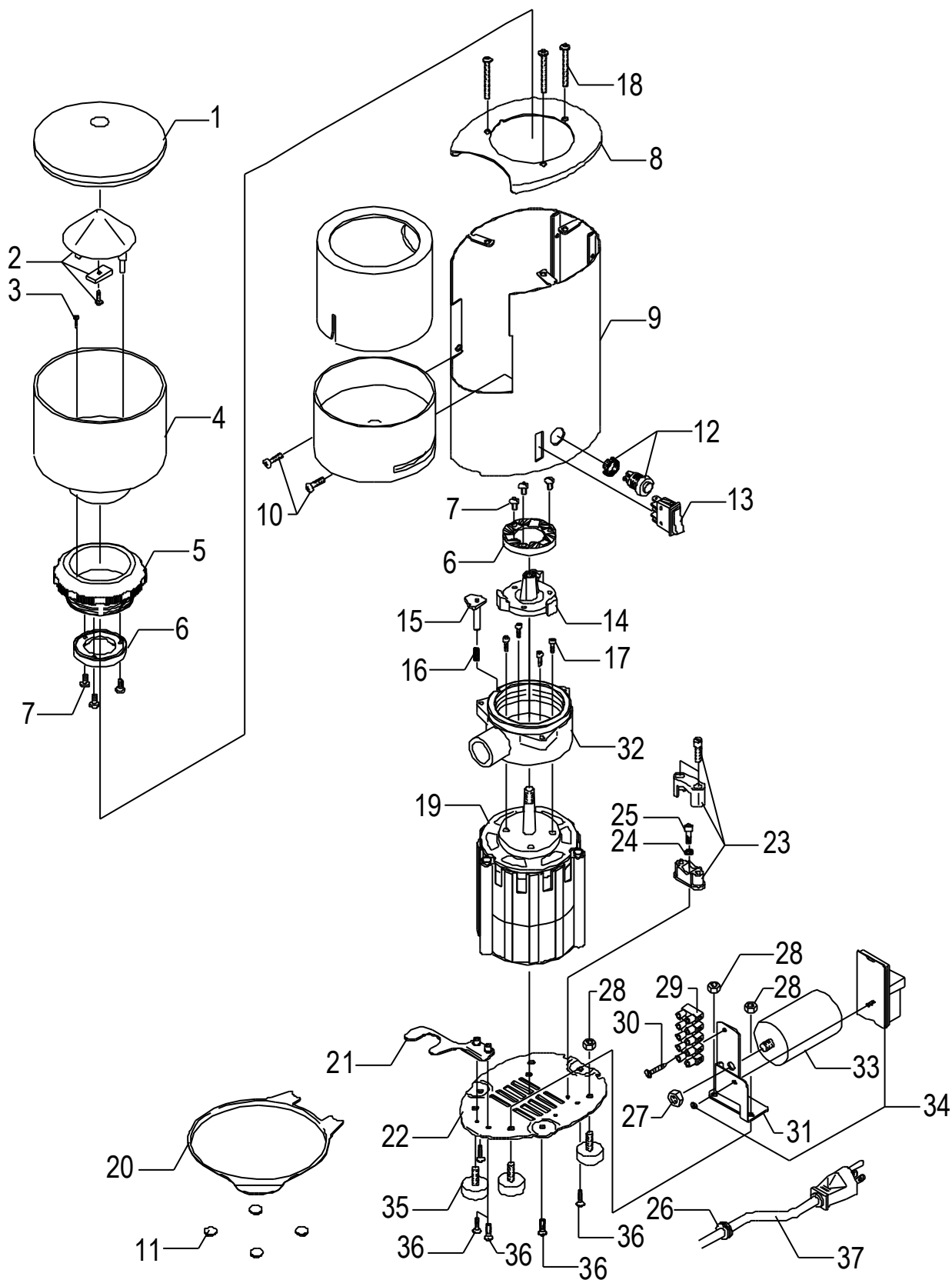




**BEZZERA**  
dal 1901

## Tav. 01

POS	DESCRIPTION	CODE	REFERENCE
34	ELECTRONIC CARD 220V	7665505	J 693/220
34	ELECTRONIC CARD 240V	7665506	J 693/240
35	FEET M6	0BBB48	-
36	SCREW TTEI M4X8	7819908	-
37	CABLE WITH AUSTRALIAN PLUG	7552001	J 720
37	CABLE WITH ENGLISH PLUG	7554001	J 822
37	ELECTRIC CABLE MONOPHASE 110V WITH USA PLUG	0BEB89110	EB 89110
37	ELECTRIC CABLE MONOPHASE 230V WITH SHUKO PLUG	0BEB89	EB 89





POS	DESCRIPTION	CODE	REFERENCE
01	DOSER COVER	0BDF51M	DF 51M
02	DOSER CYLINDER	0BDF44M	DF44M
03	DOSER KNOB	0BDF48	DF 48
04	UPPER STAR	0BDF42	DF 42
05	DIAPHRAGM	0BDF60	DF 60
06	INTERMEDIATE STAR	0BDF59	DF 59
07	SPRING FOR STAR	0BDF61	DF 61
08	BOTTOM STAR COMPLETE WITH STUD	0BDF62	DF 62
09	SPLIT PIN	0BDS43	DS 43
10	HAND LEVER	0BDF28	DF28
11	DOSING RING	0BDF71	DF 71
12	SPRING STAINLESS STEEL SHEET	0BDF70	DF 70
13	WASHER D5	0BMQ43/5	MQ 43/5
14	SCREW TC M5X10	0BMQ37	MQ 37
14	SCREW TC M5X10	0BMQ37	MQ 37
15	BUMPER	0BEB030	EB 030
16	MICROSWITCH	7633903	J 683
17	SCREW TC M3 X 16	0BMQ35	MQ 35
18	DIVISOR	0BDF92	DF 92
19	PAWL SPRING	0BDF57	DF 57
20	HAND LEVER RETURN SPRING	0BEB055	EB 055
21	DOSER HAND LEVER WITH LEVER COVER	0BDF29	DF 29
22	PAWL	0BDF56	DF 56
23	NUT M8	0BMQ45/8	MQ 45/8
24	DOSER BOTTOM	0BDF93	DF 93
25	SCREW TC M3 X 8	0BDF86	DF 86

